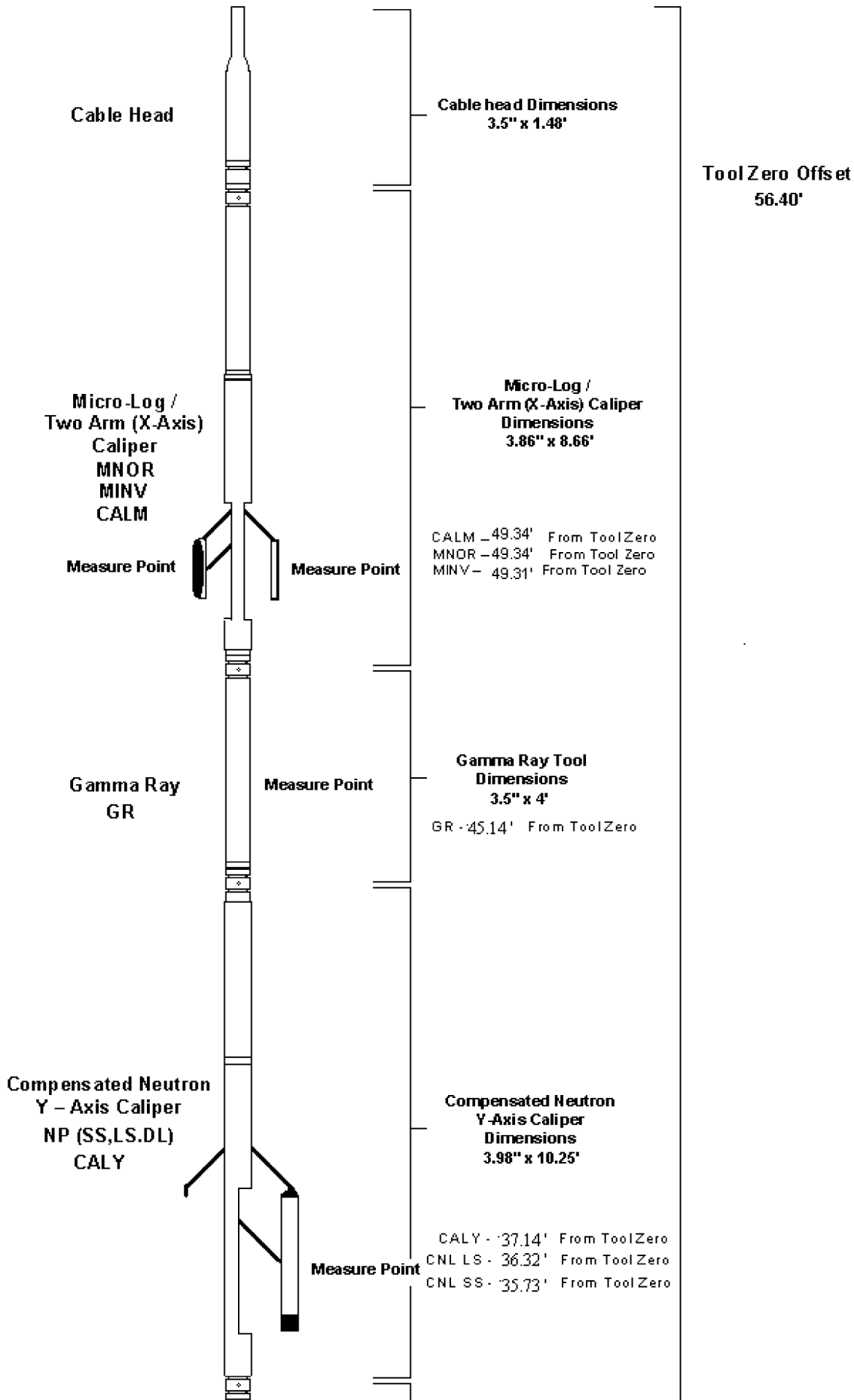




**DUAL INDUCTION – SP / GAMMA RAY /  
 COMPENSATED LITHO-DENSITY / X-CALIPER  
 COMPENSATED NEUTRON / Y-CALIPER  
 MICRO - LOG / M-CALIPER**



**Digital Telemetry**

**Digital Telemetry Section  
Dimensions**  
3.5" x 3.15'

**Tool String  
Length Total**  
57.89'

**Compensated  
Litho-Density (Pe)  
X - Axis Caliper**

DP( SS,LS,DL)  
RHOB  
DRHO  
PE  
CALX  
Measure Point

**Compensated Litho-Density  
X-Axis Caliper  
Dimensions**  
3.98" x 9.35'

CALX - 23.20' From ToolZero  
LDT w1 -  
LDT w2 -  
LDT w3 - 22.93' From ToolZero  
LDT w4 -  
LDT SS - 22.44' From ToolZero

**Dual Induction**

SP  
ILD  
ILM  
LL3

**Dual Induction Tool  
Dimensions**  
3.62" x 21'

**S.P. / CILD  
Measure Point**

SP - 10.96' From ToolZero  
ILD - 10.96' From ToolZero

**CILM Measure  
Point**

ILM - 7.22' From ToolZero

**Tool First Reading  
Point**

**Laterolog 3  
Measure Point**

LL3 - 1.67' From ToolZero

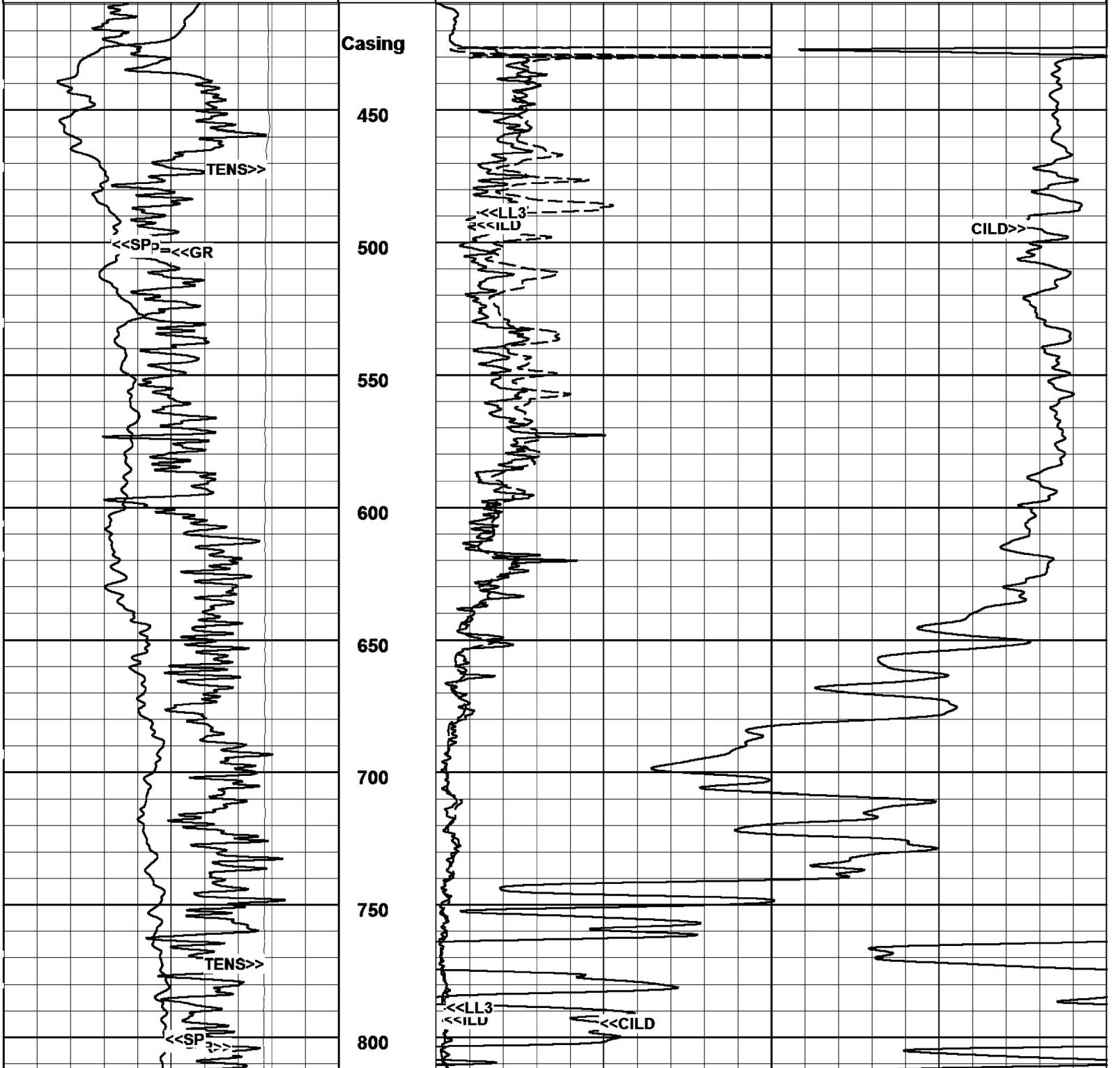
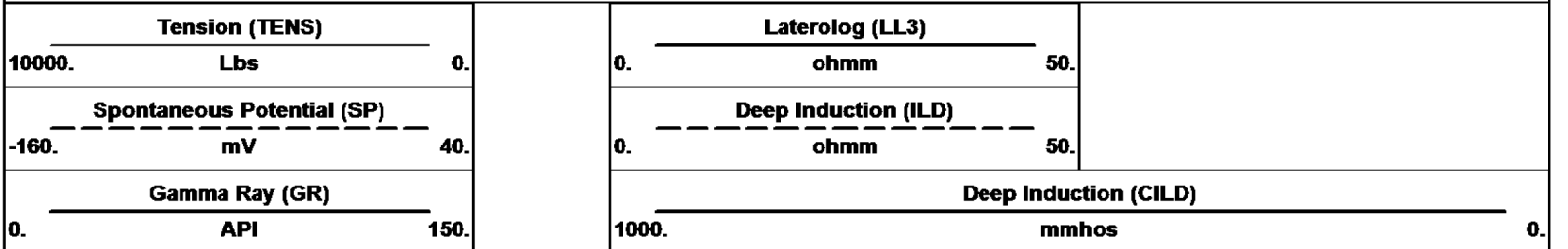
**Tool Zero Point  
(Tool Bottom)**

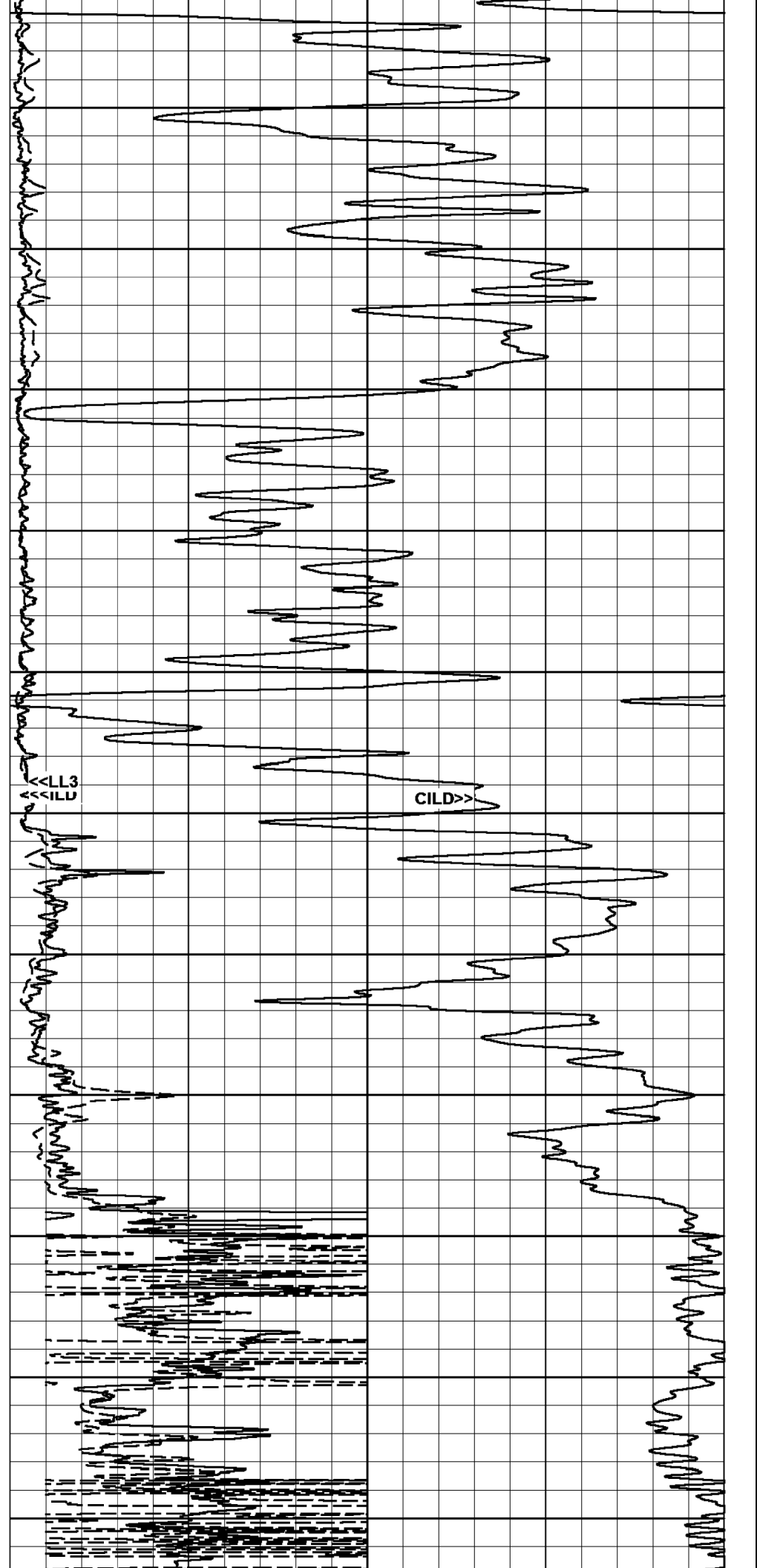
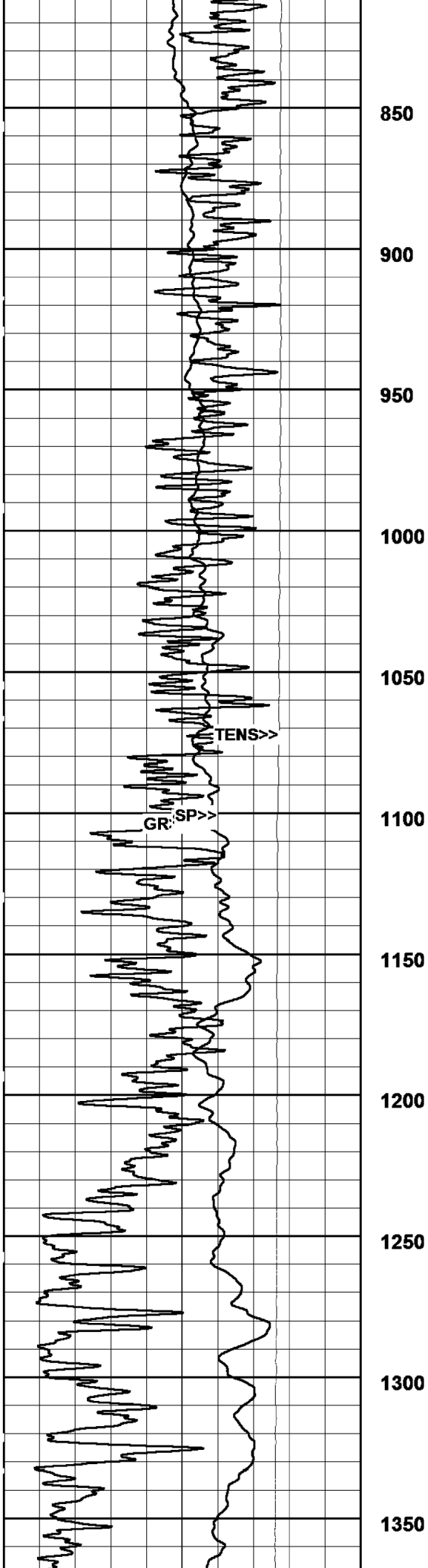
**All Measurements are  
taken from Tool Zero**

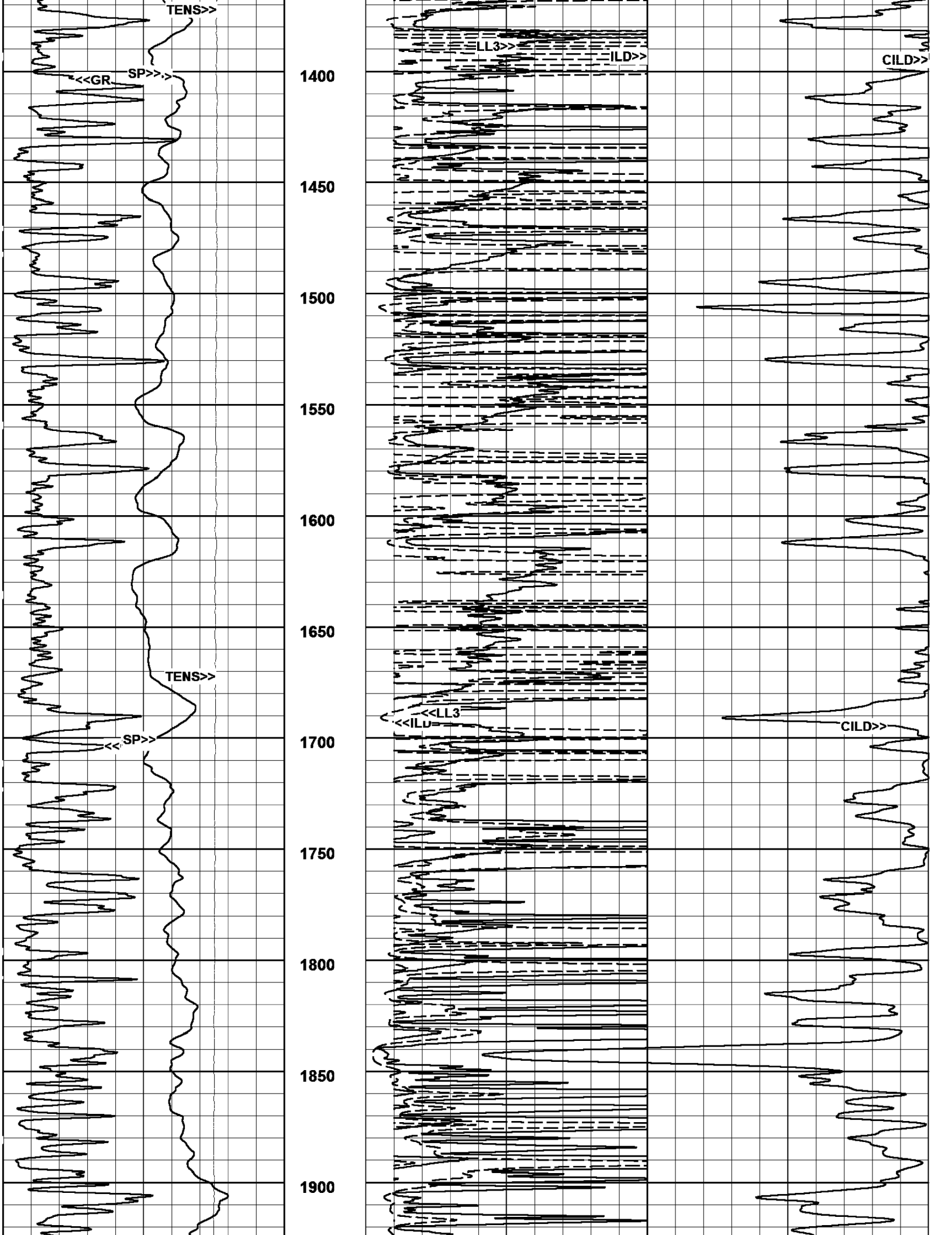
04/29/2012  
18:25:12 => End Time

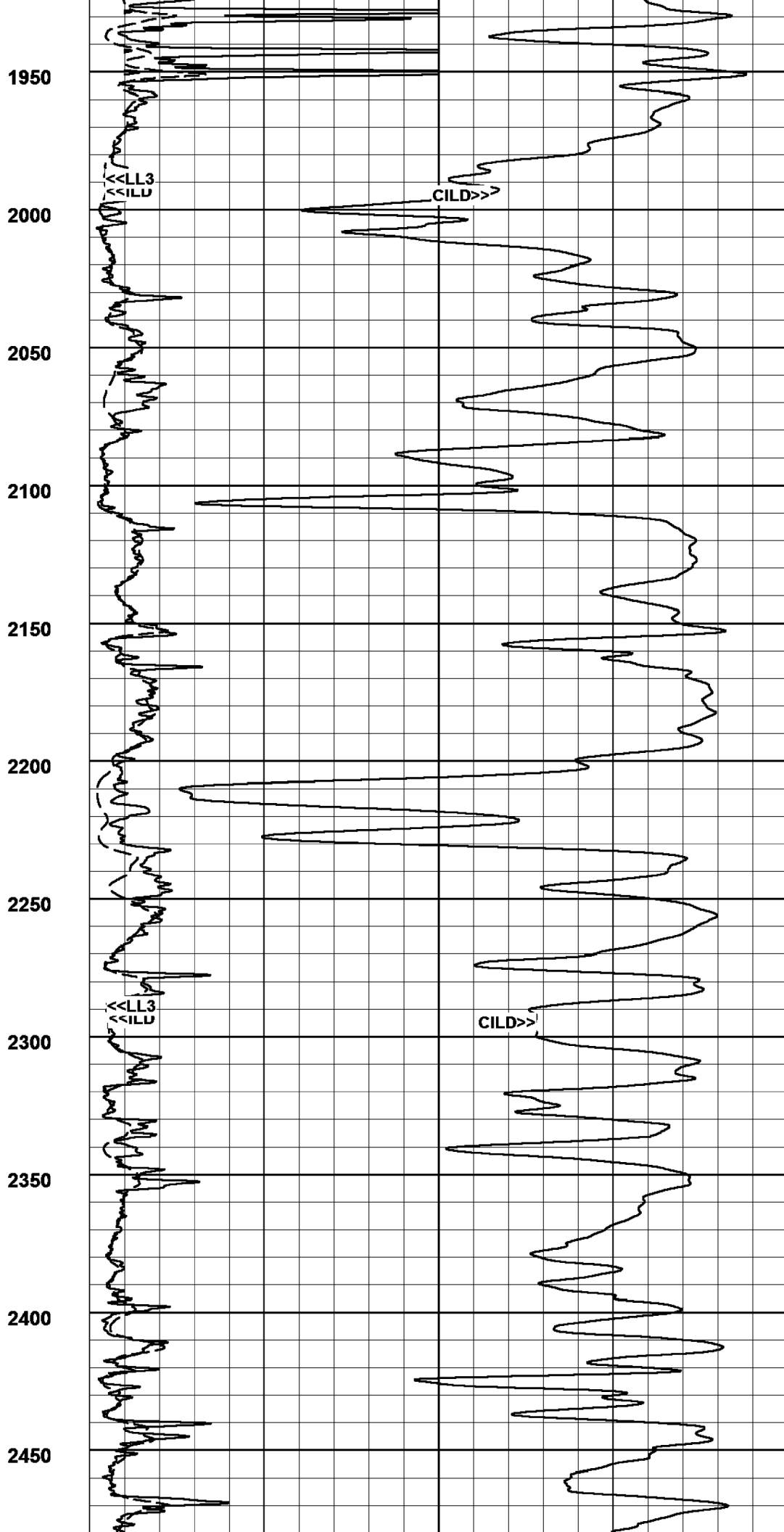
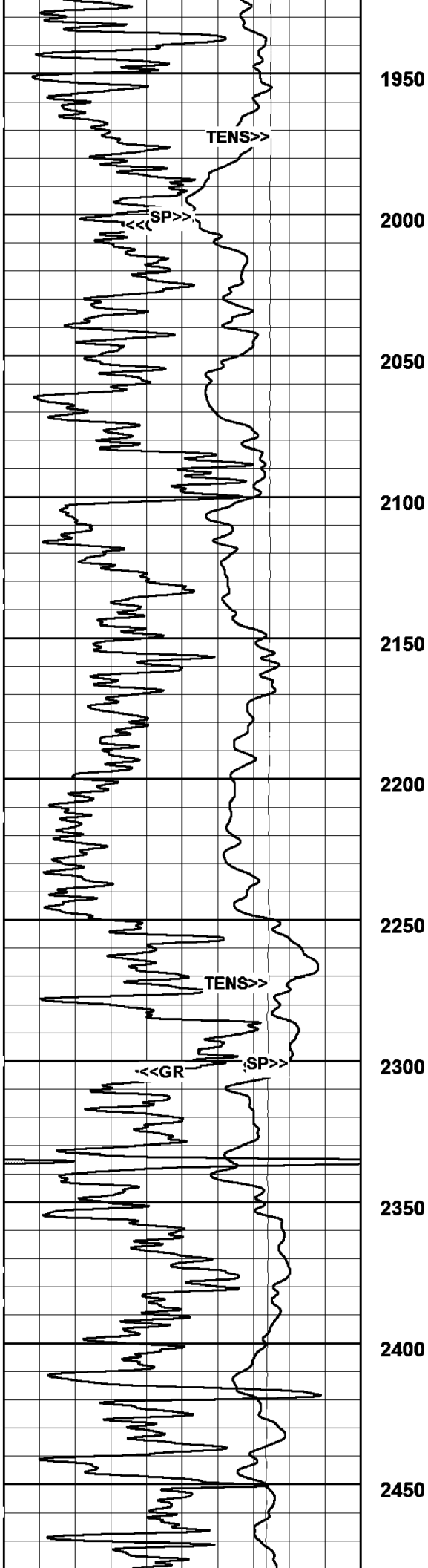
# MAIN PASS (2"/100Ft)

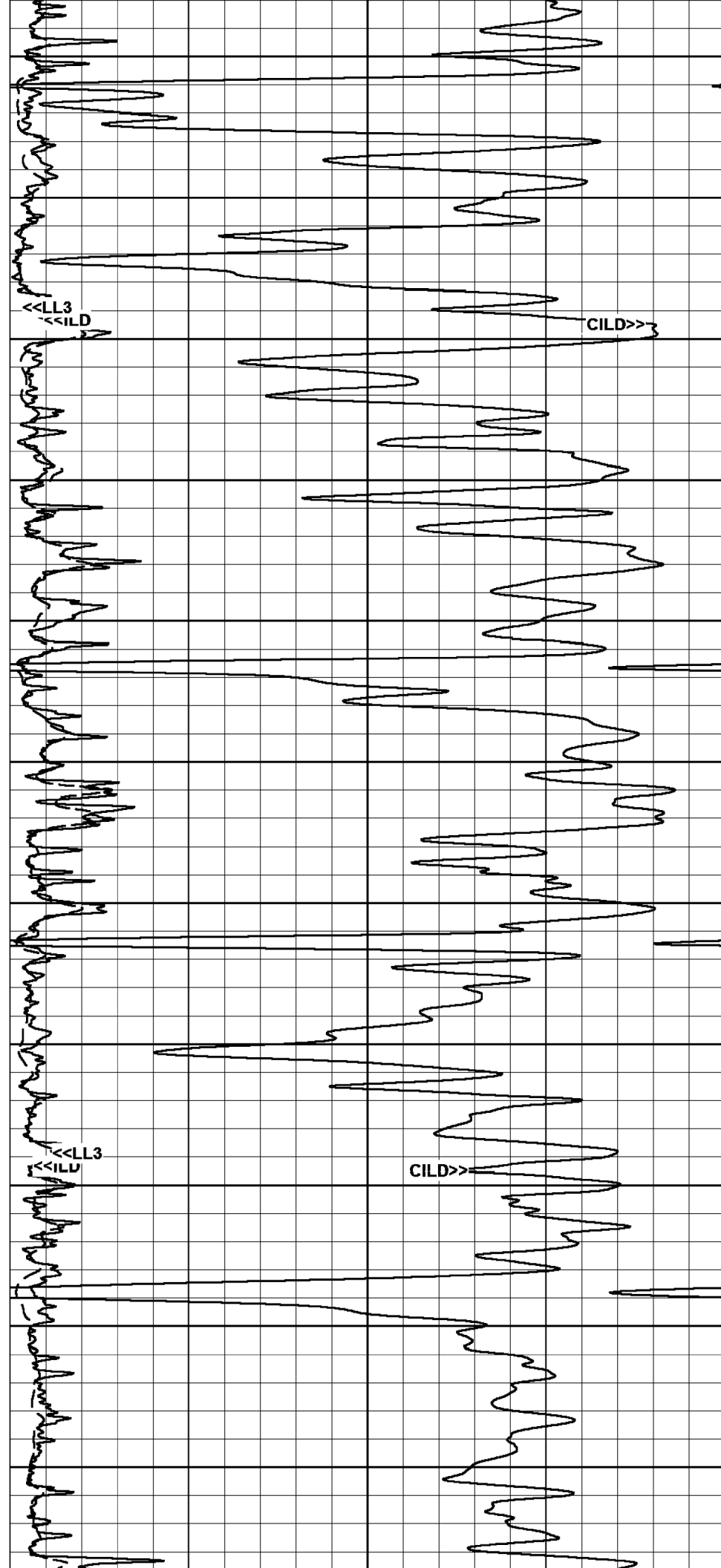
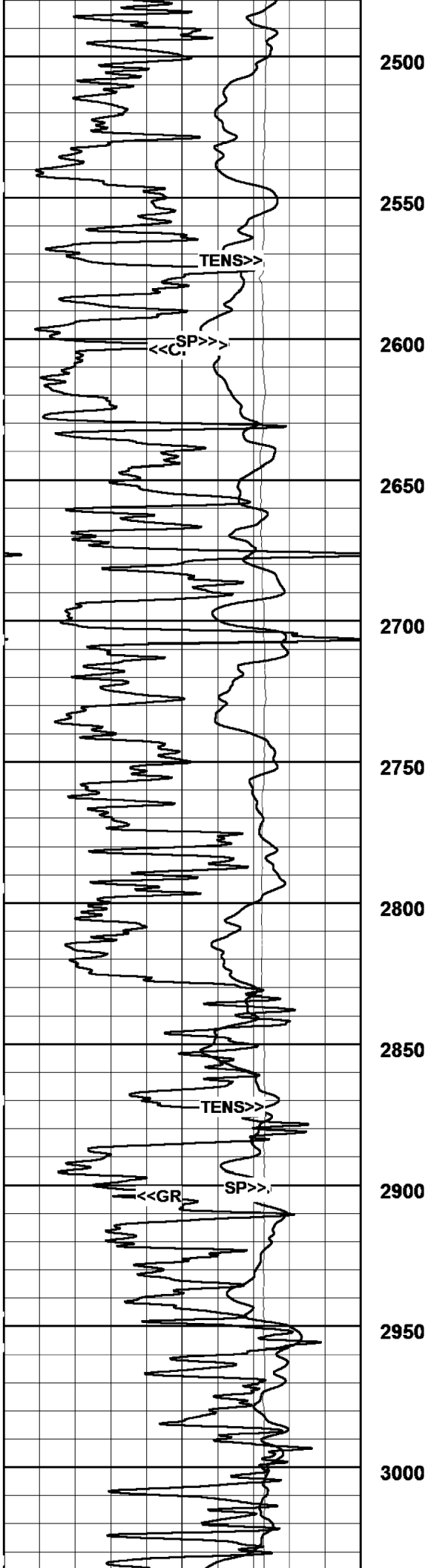
Log UP - (VER 11.08)  
End Depth=> 410.00 Feet



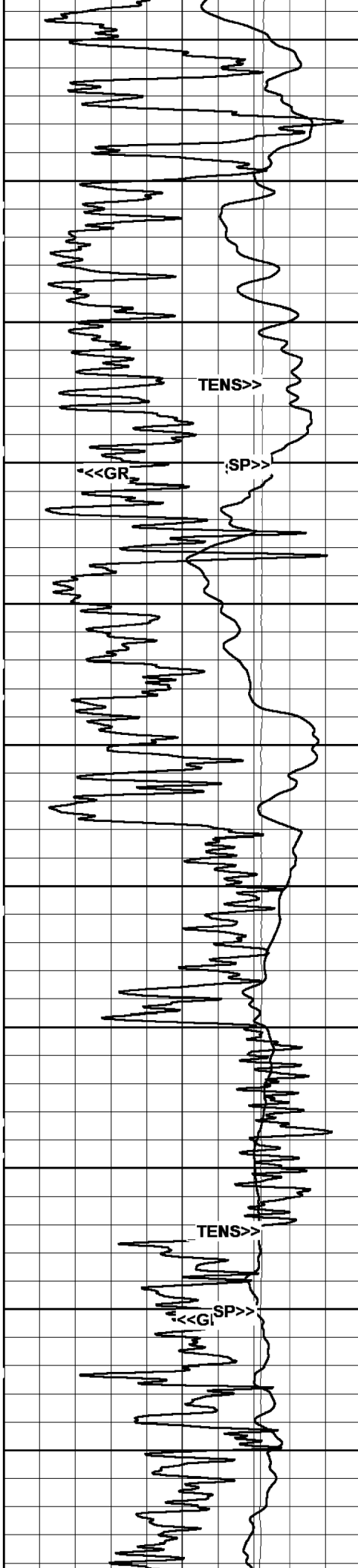




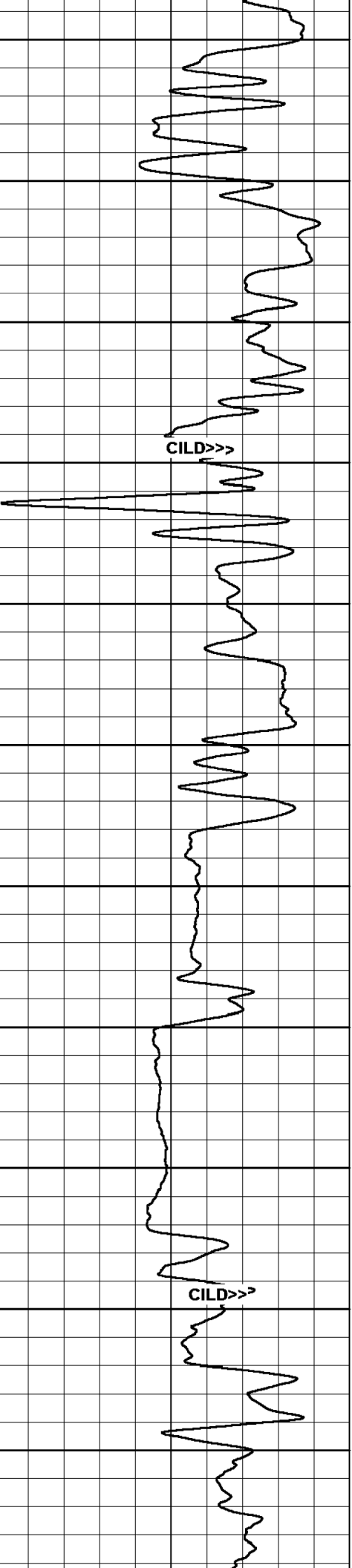
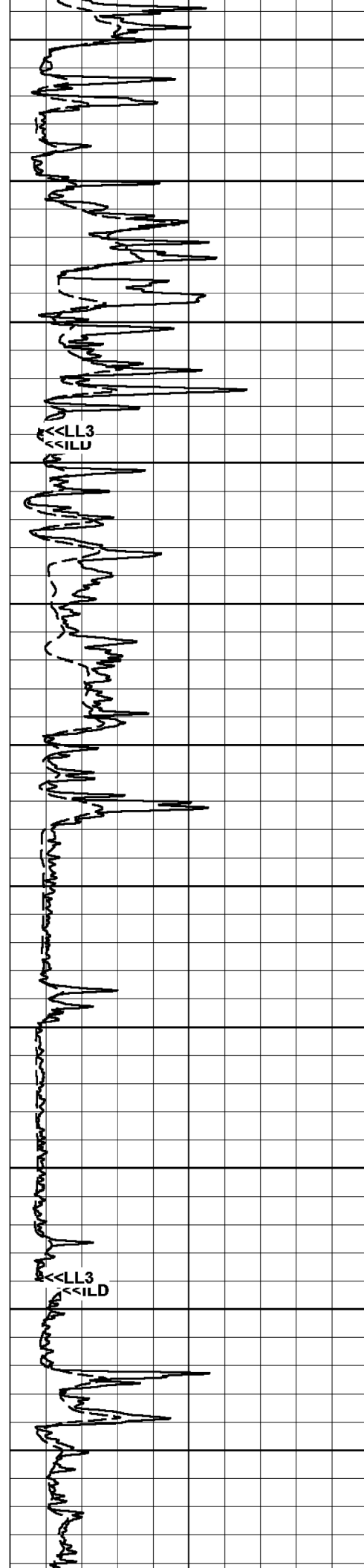


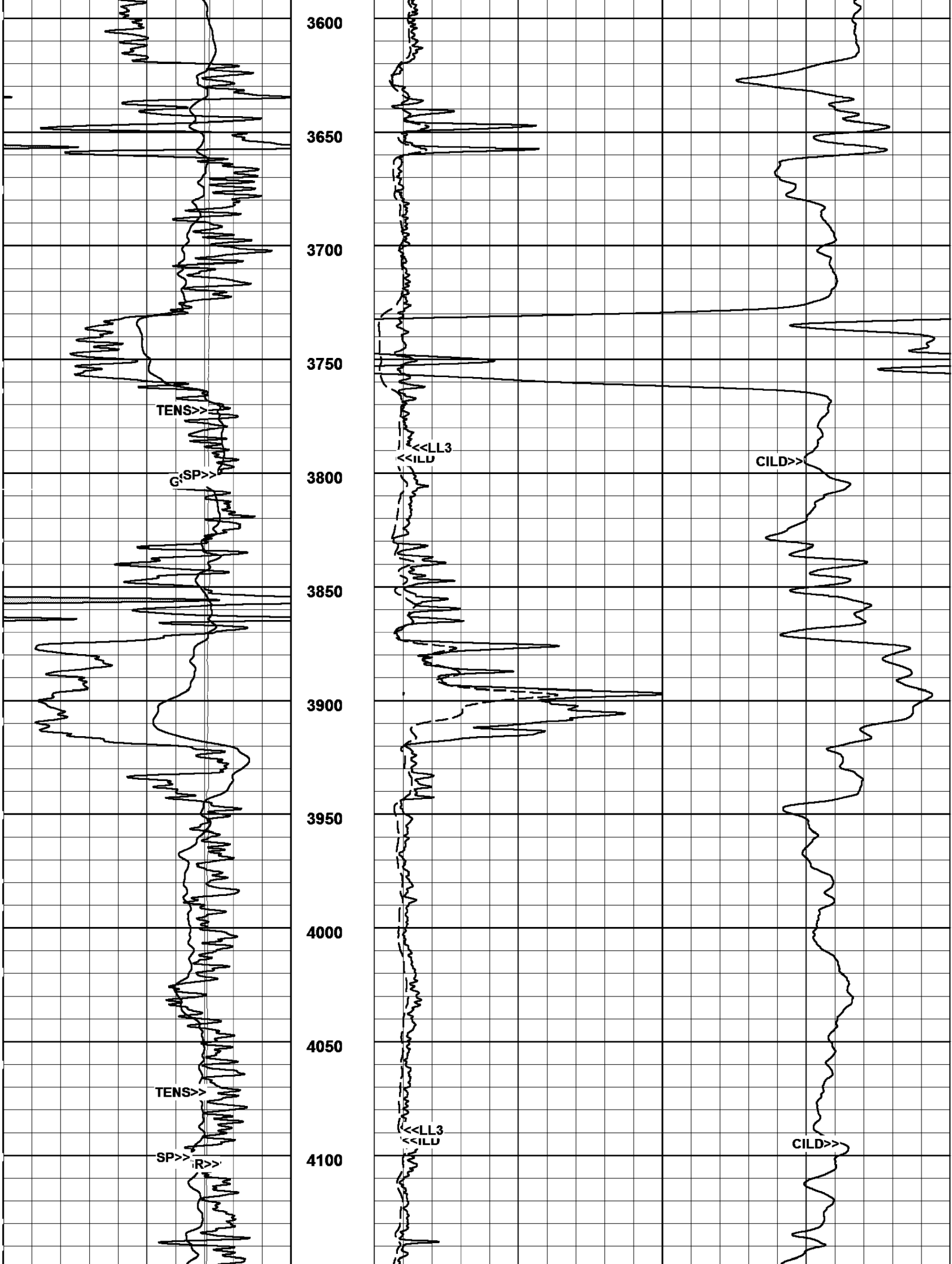


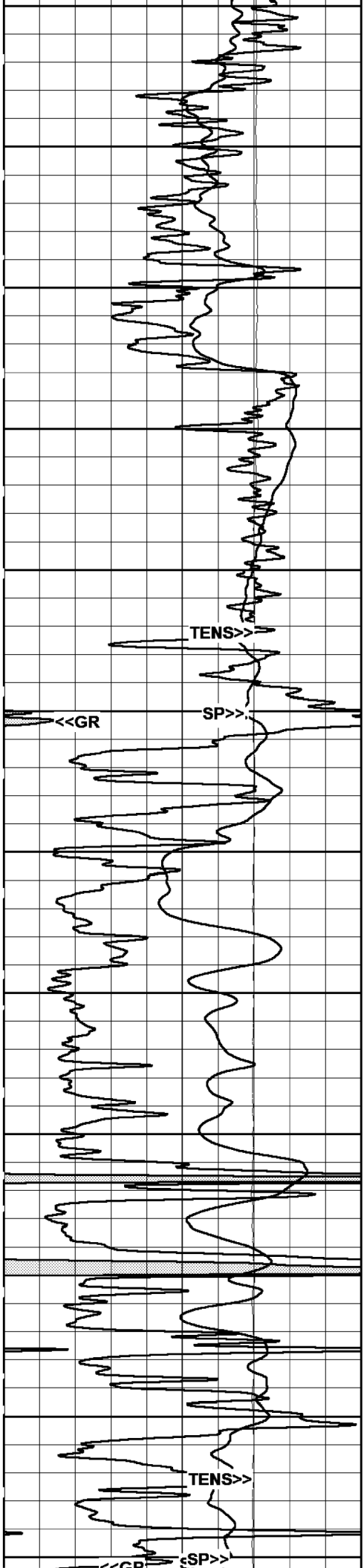




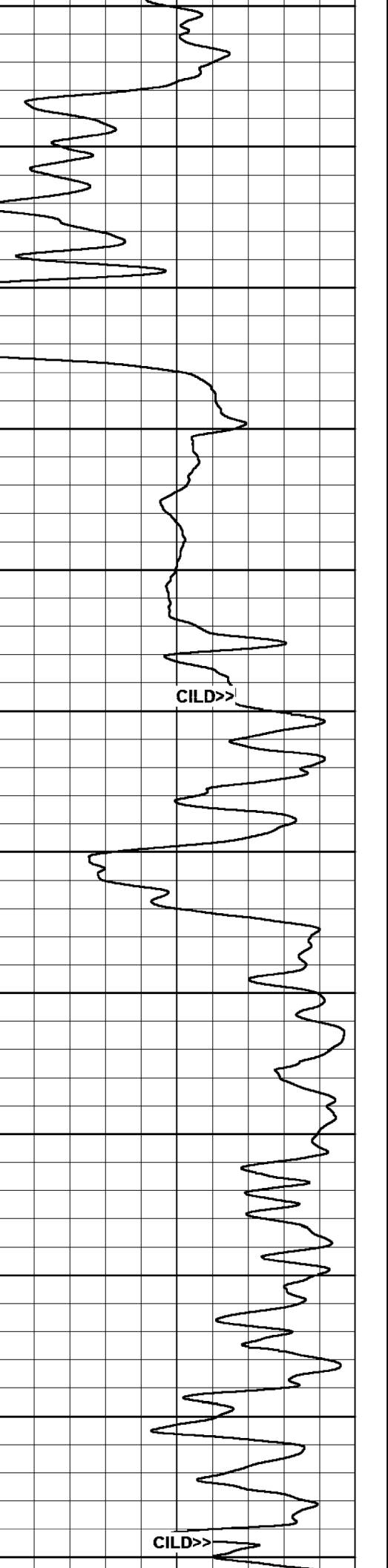
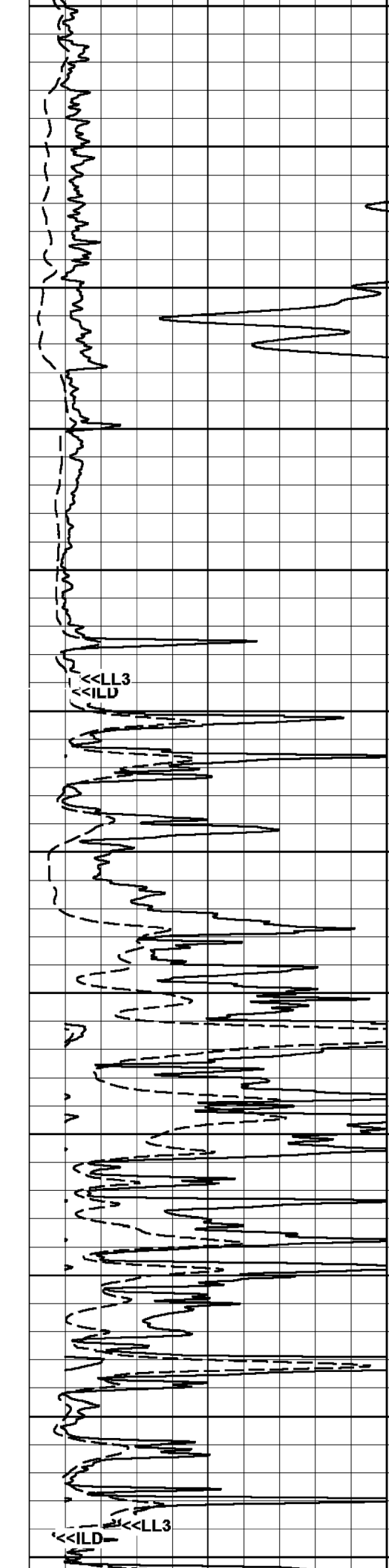
3050  
3100  
3150  
3200  
3250  
3300  
3350  
3400  
3450  
3500  
3550

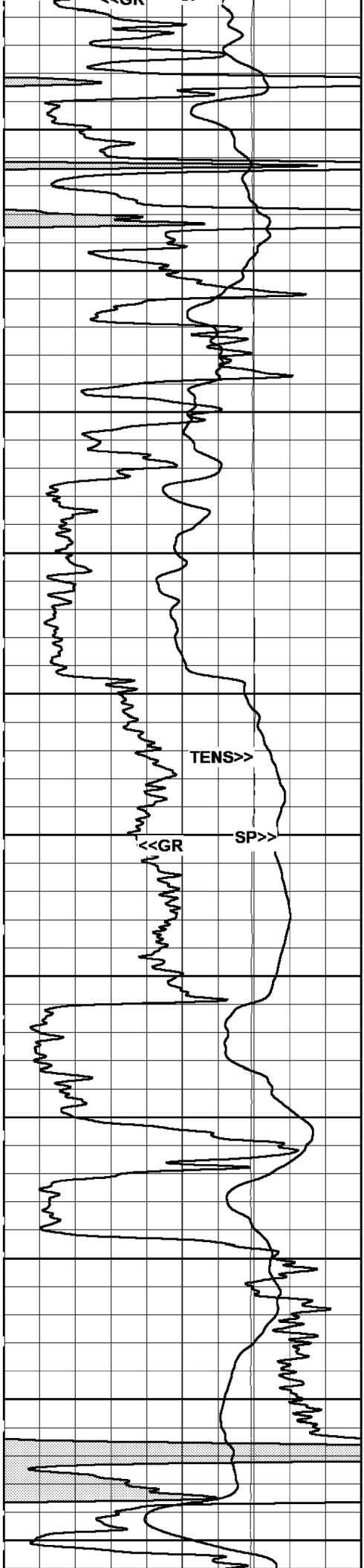




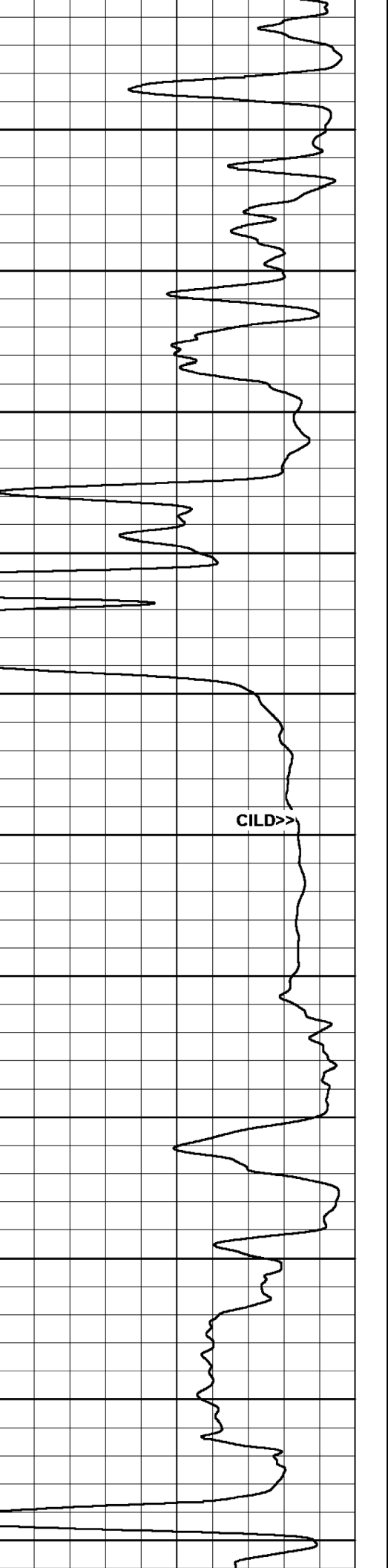
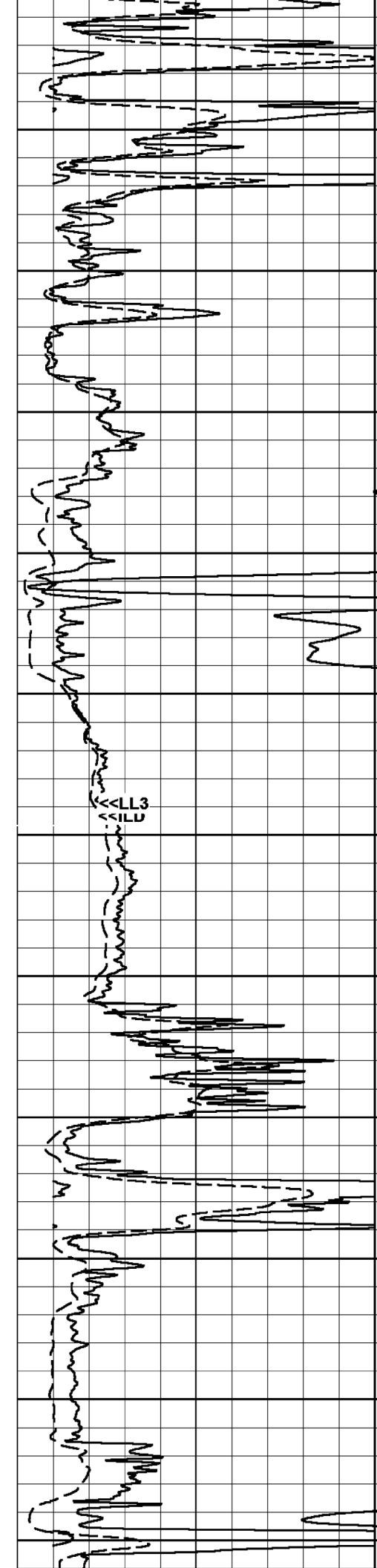


4150  
4200  
4250  
4300  
4350  
4400  
4450  
4500  
4550  
4600  
4650  
4700





4750  
4800  
4850  
4900  
4950  
5000  
5050  
5100  
5150  
5200  
5250



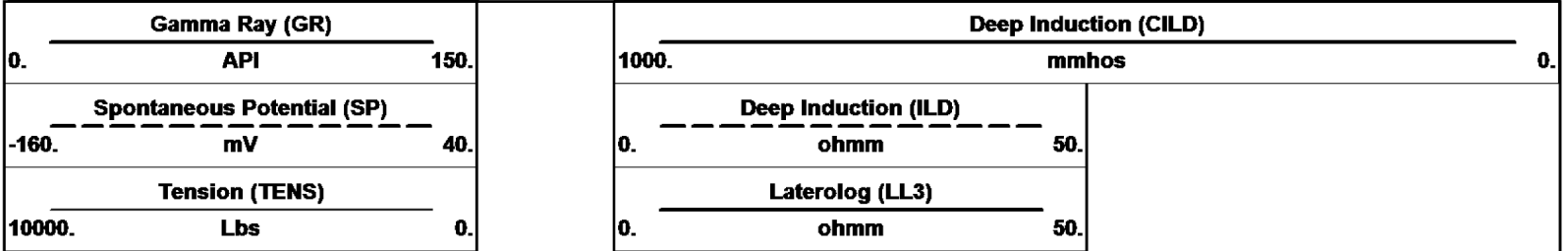
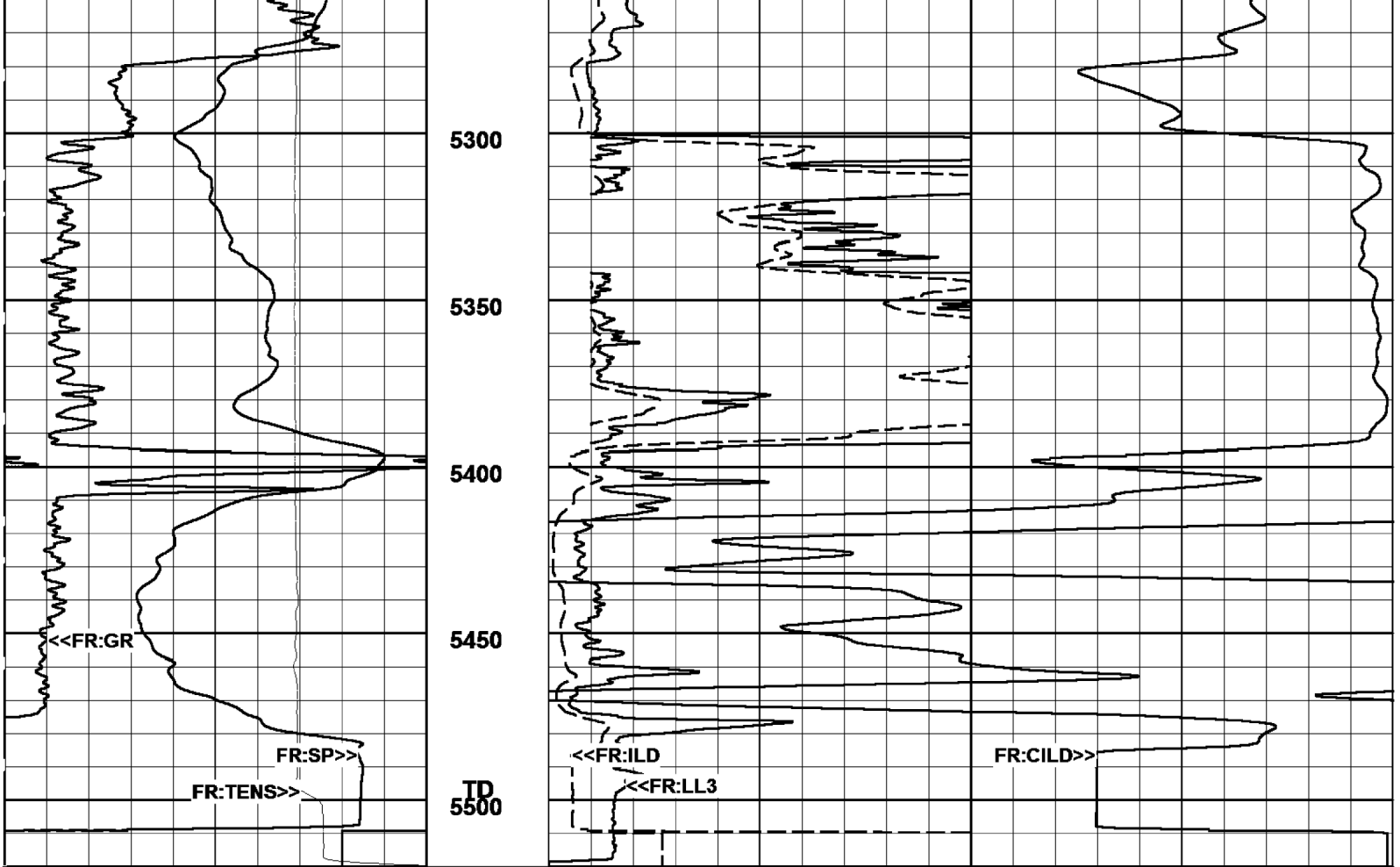
TENS>>

<<GR

SP>>

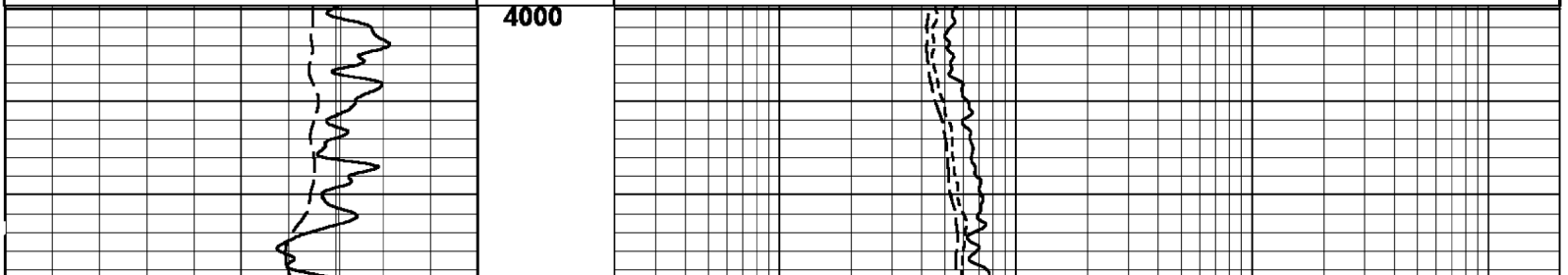
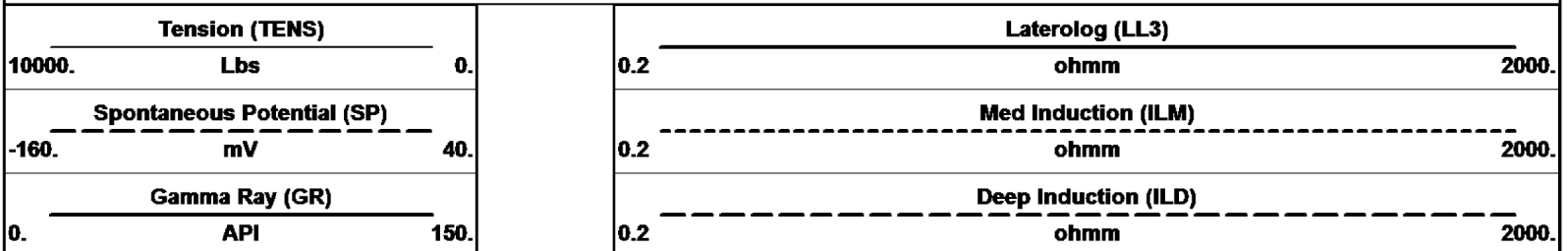
<<LL3  
<<EU

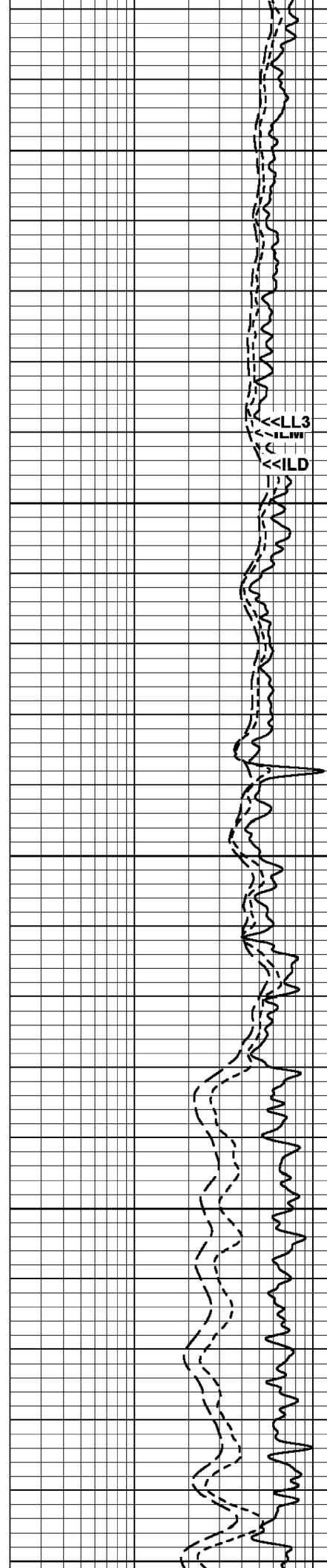
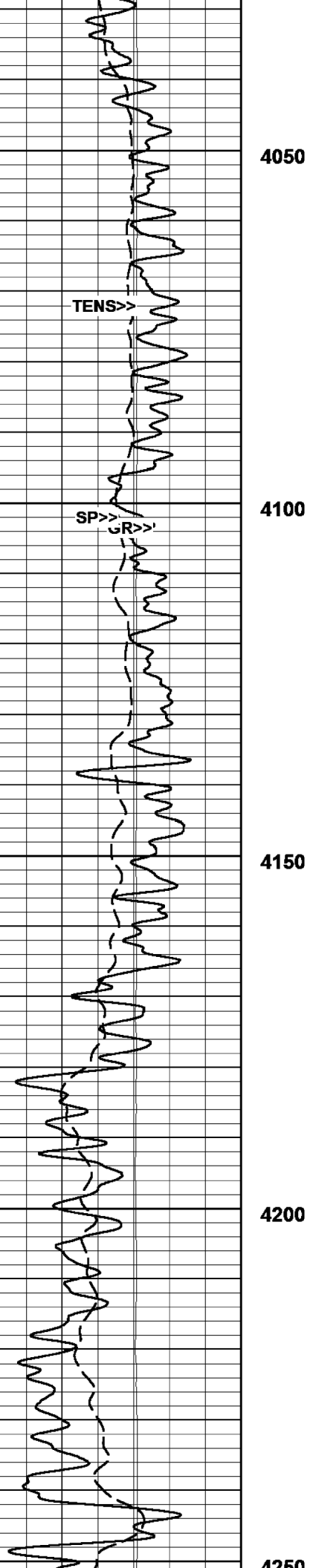
<<CILD>>

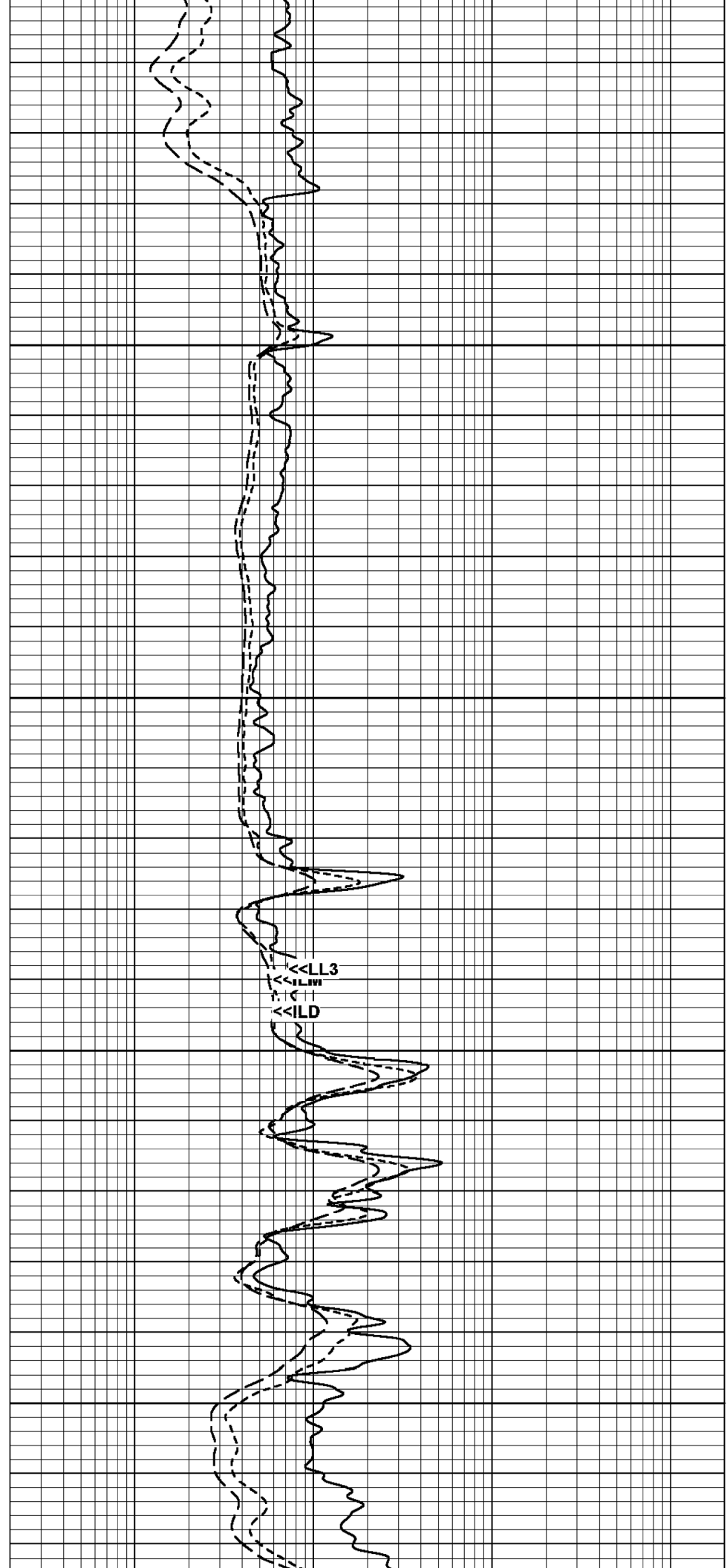
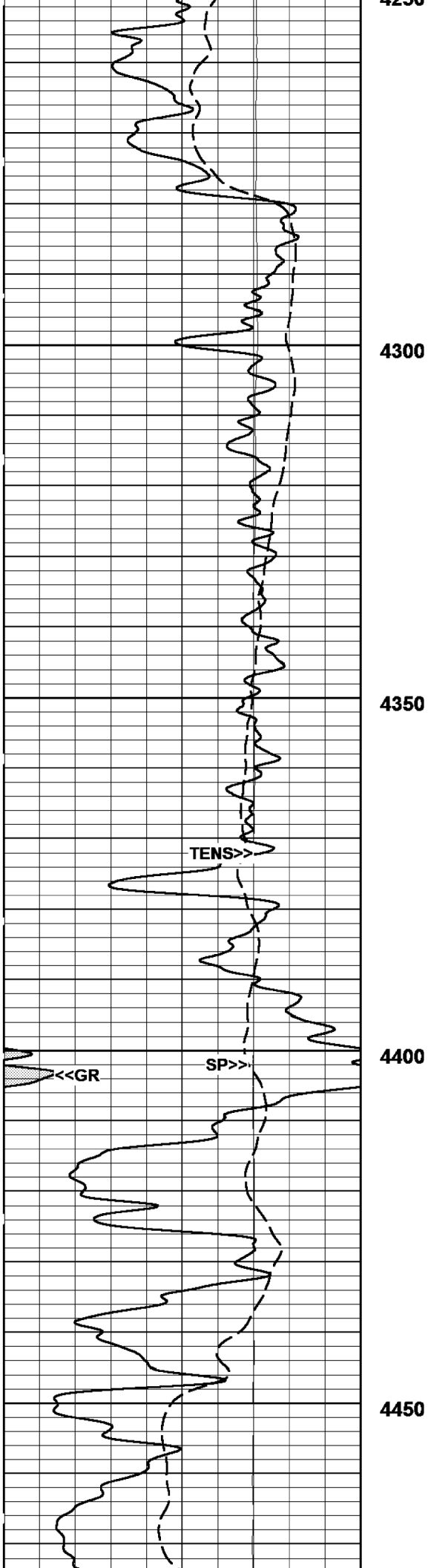


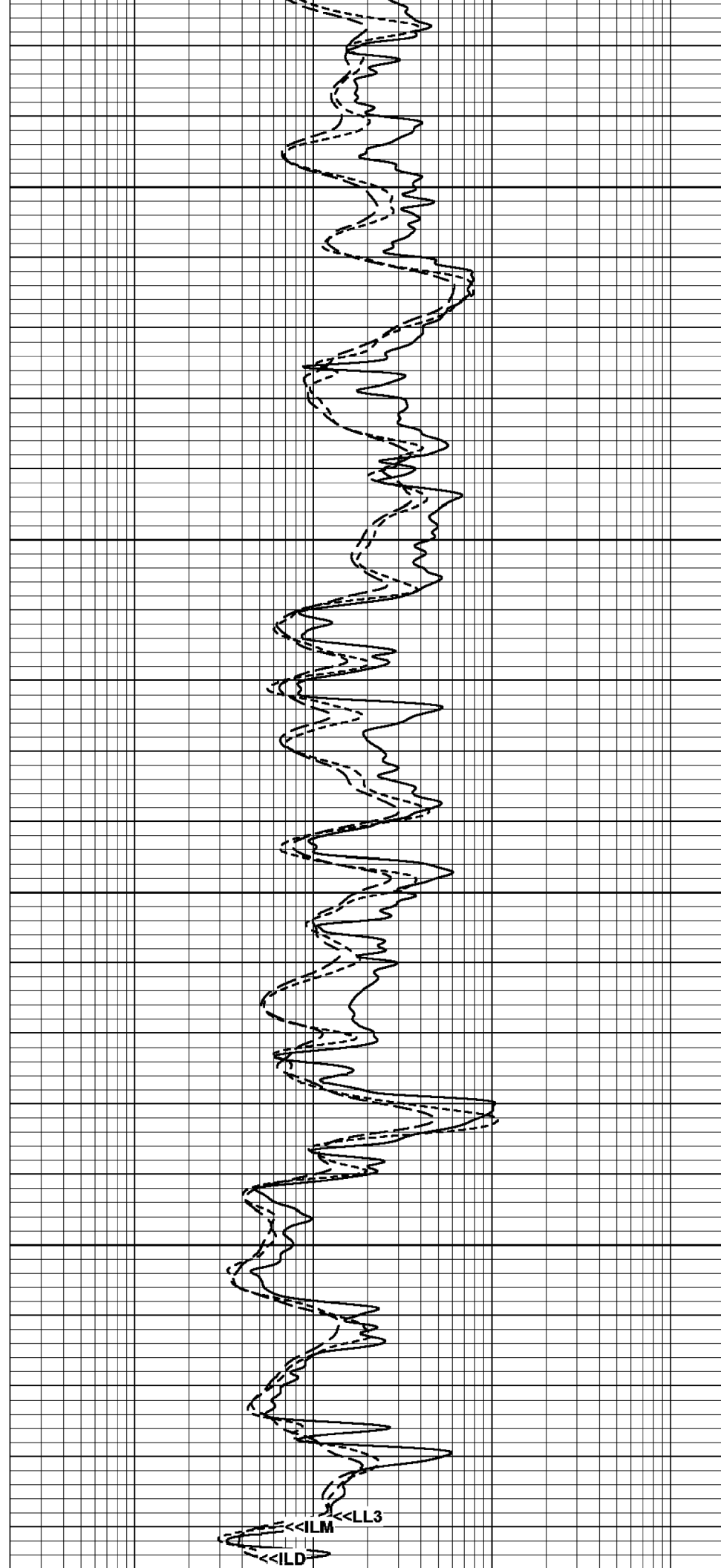
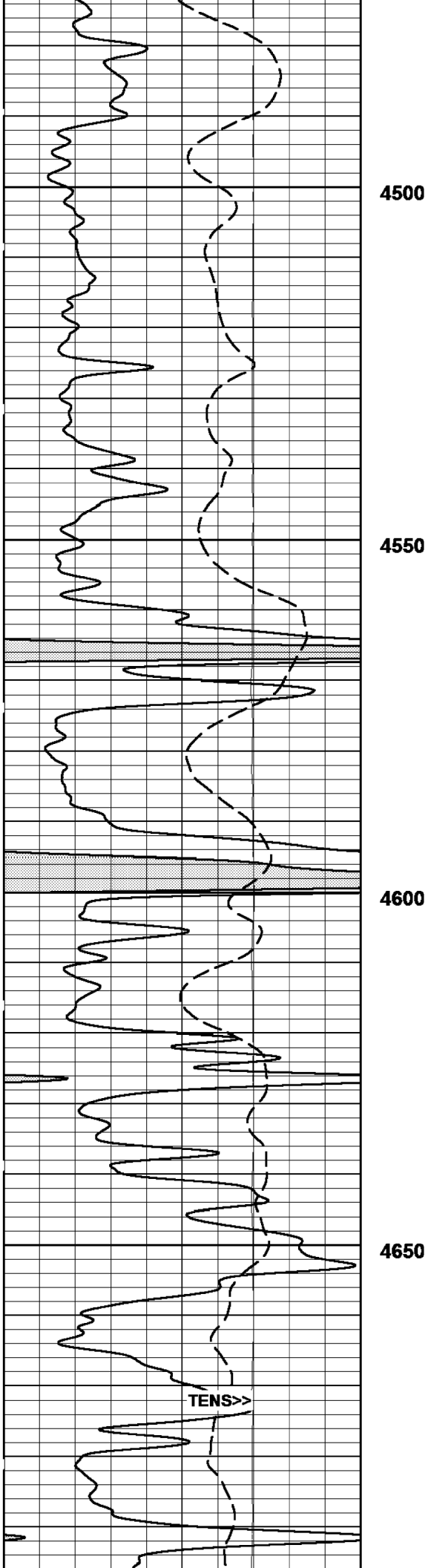
04/29/2012  
 16:52:36 => Start Time  
**MAIN PASS (2"/100ft)**  
 Log UP - (VER 11.08)  
 Start Depth=> 5520.00 Feet

04/29/2012  
 18:25:12 => End Time  
**MAIN PASS (5"/100ft)**  
 Log UP - (VER 11.08)  
 End Depth=> 3999.90 Feet

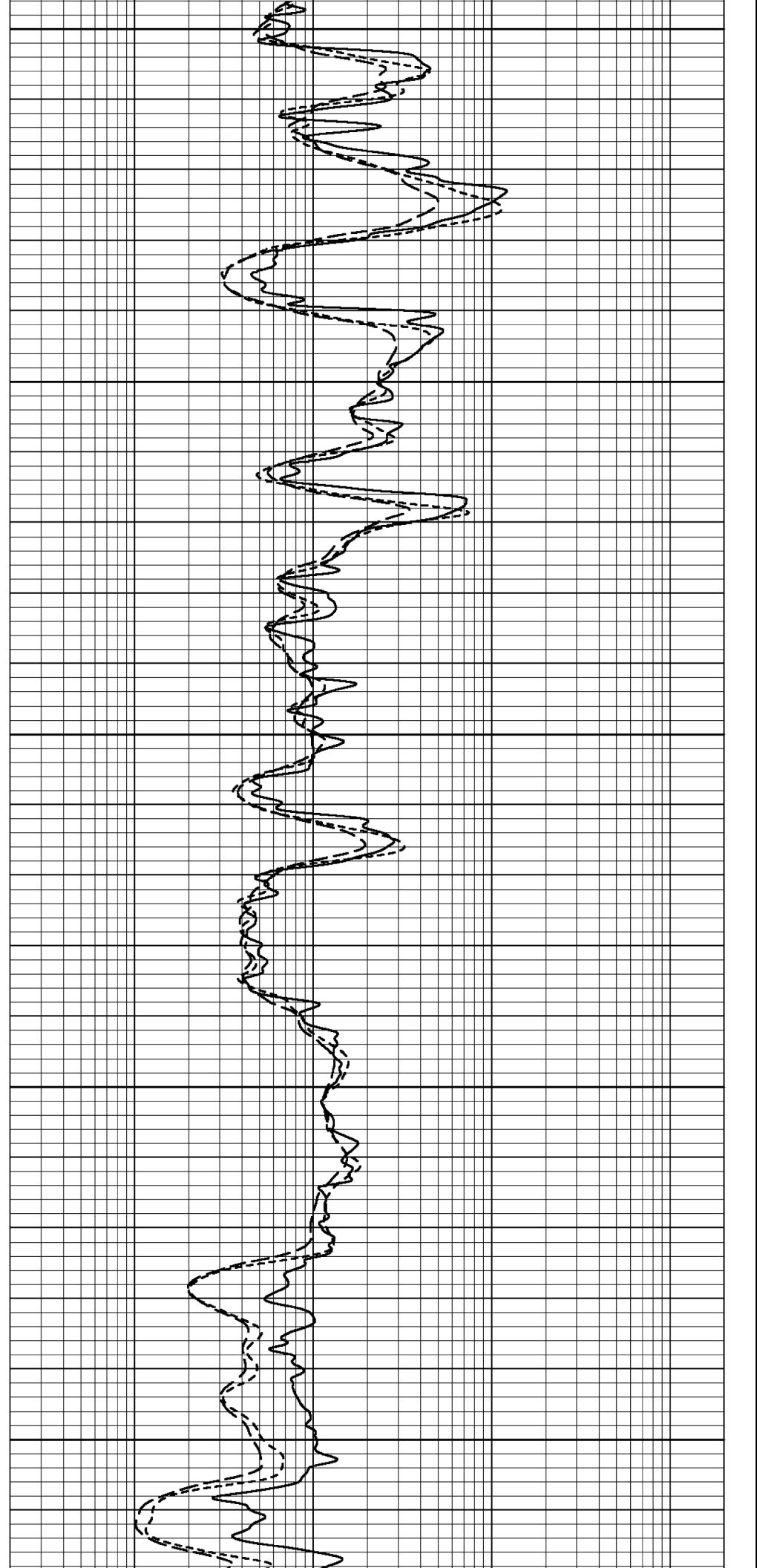
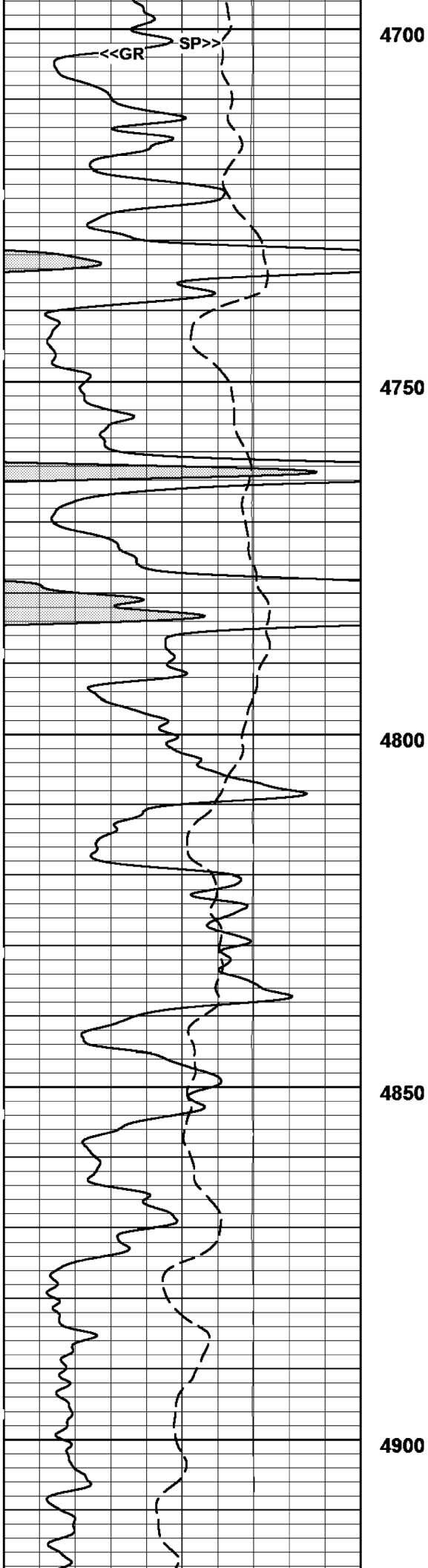


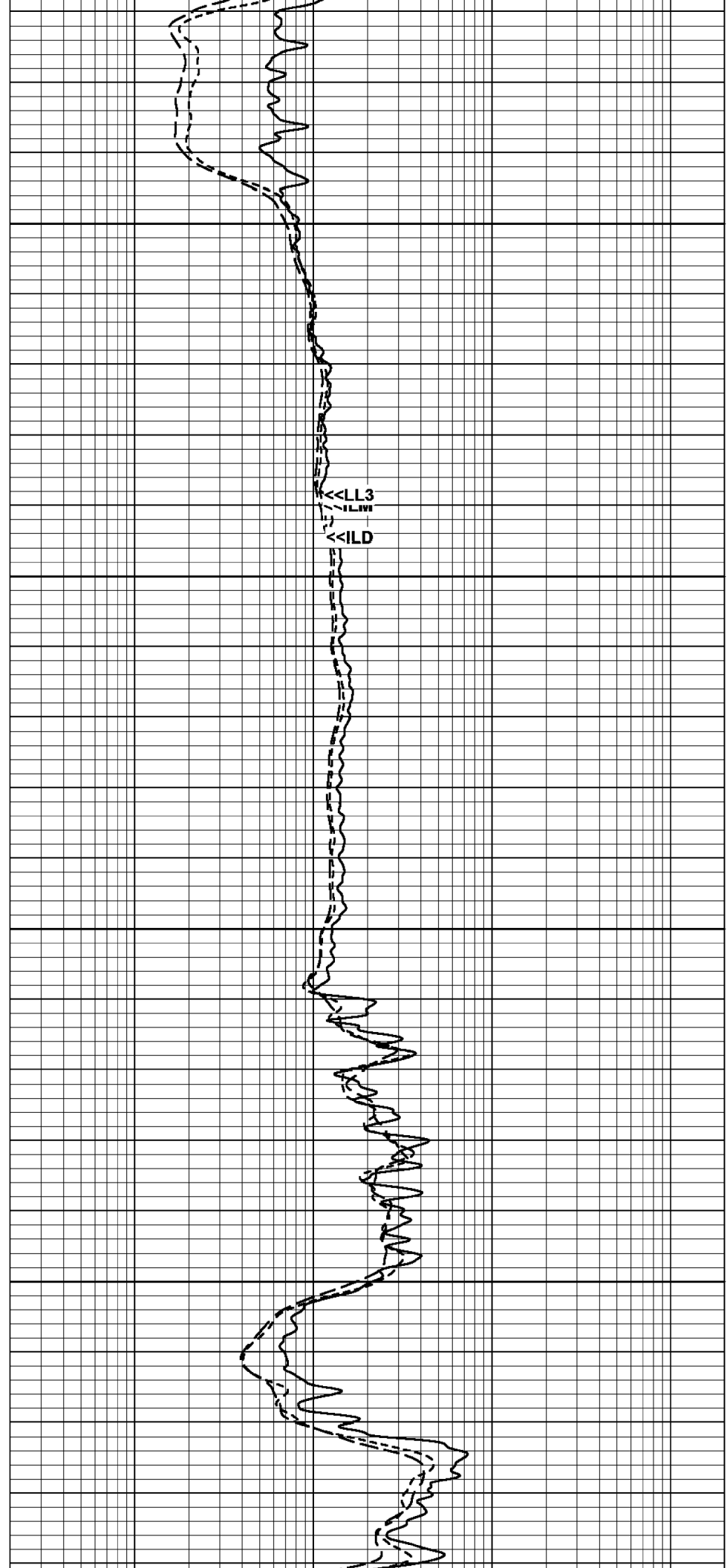
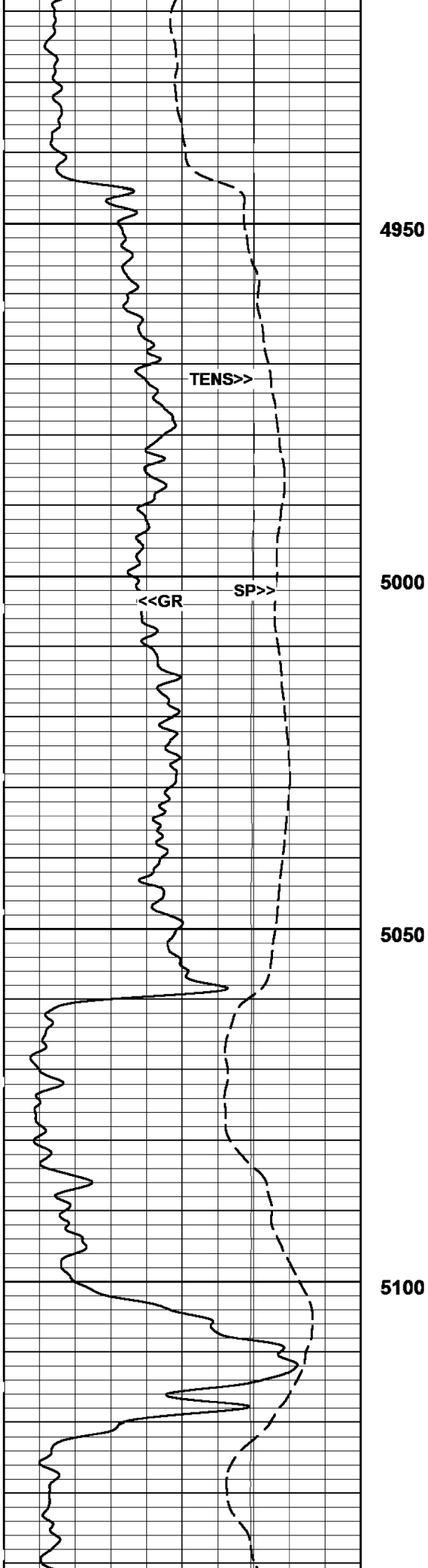


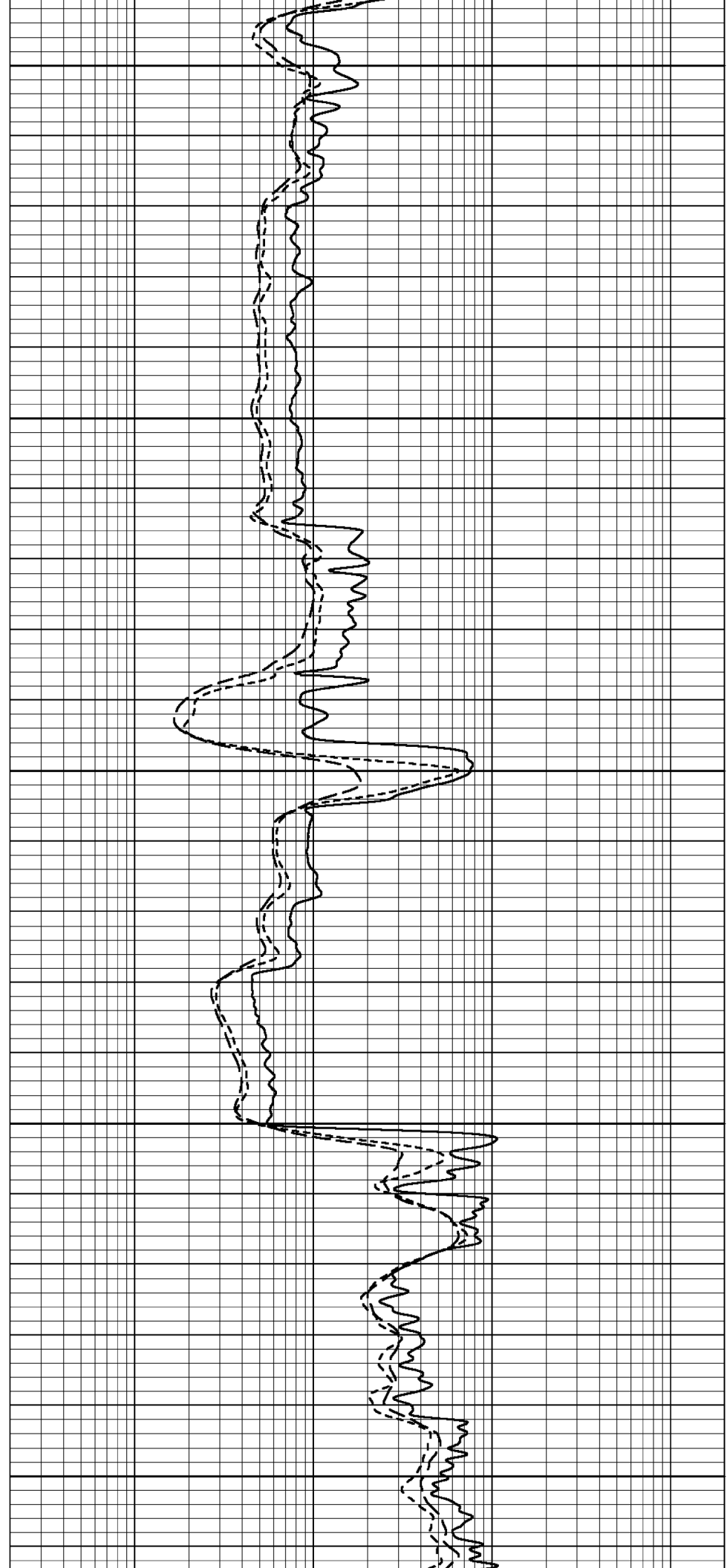


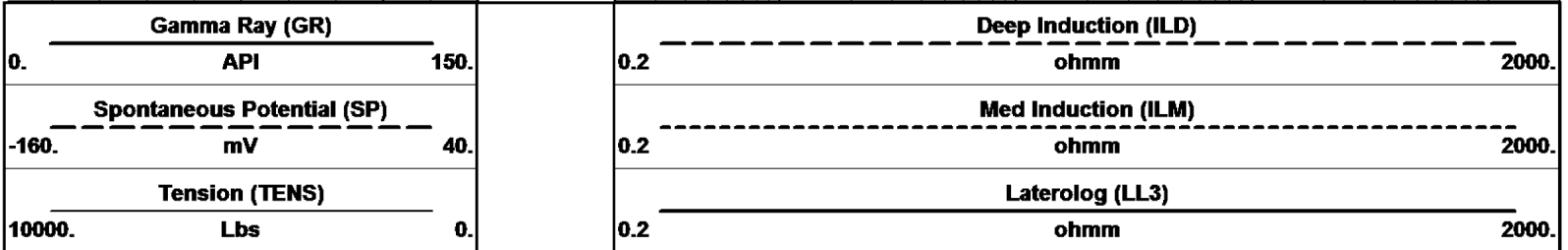
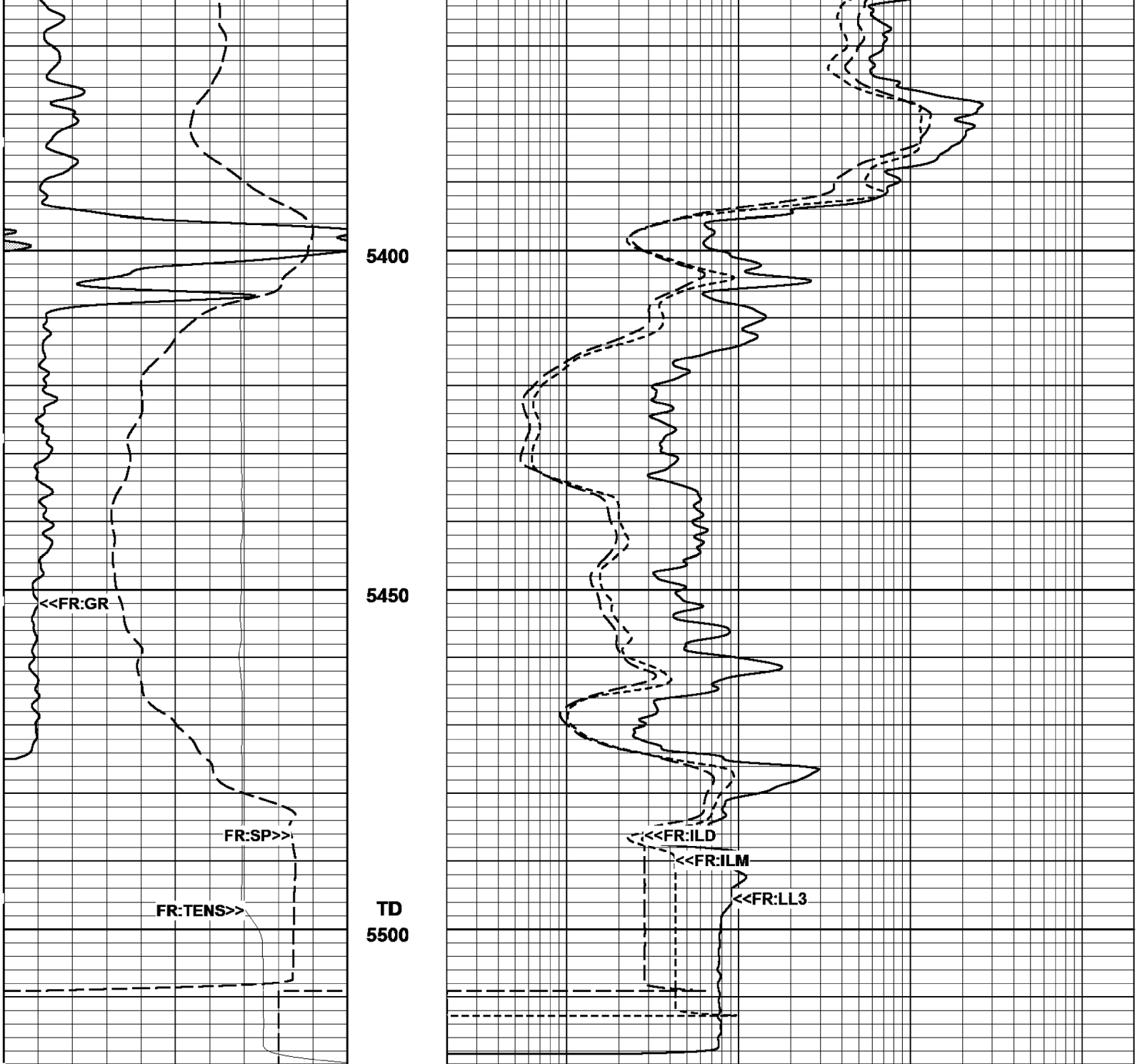










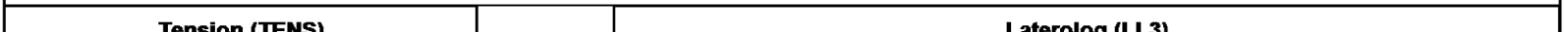


04/29/2012 **MAIN PASS (5"/100ft)** Log UP - (VER 11.08)

16:52:36 => Start Time Start Depth=> 5520.00 Feet

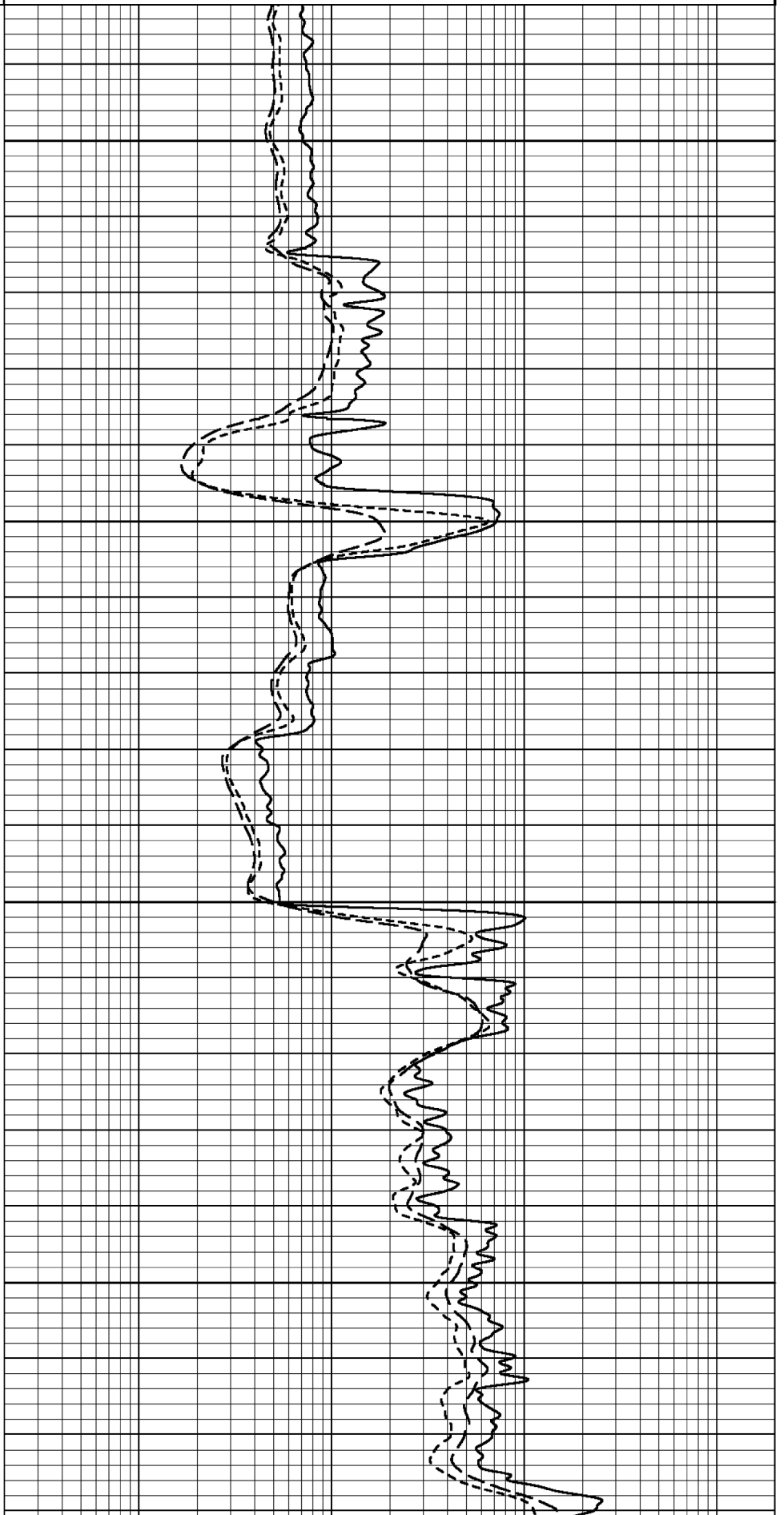
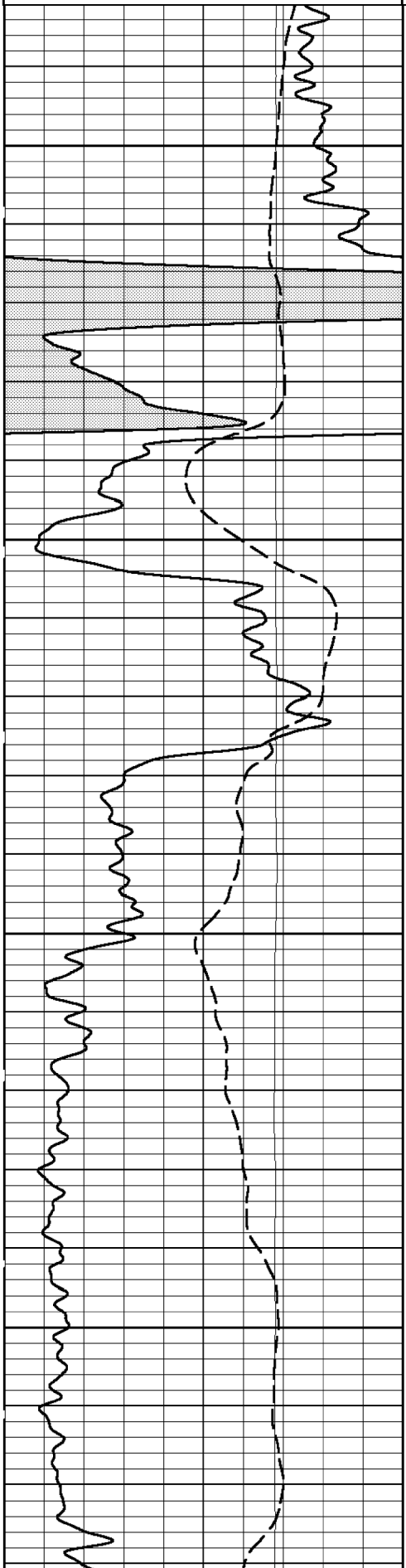
04/29/2012 **REPEAT PASS (5"/100ft)** Log UP - (VER 11.08)

16:46:46 => End Time End Depth=> 5182.40 Feet



Tension (TENS)  
10000. Lbs 0.  
Spontaneous Potential (SP)  
-160. mV 40.  
Gamma Ray (GR)  
0. API 150.

Electricity (EES)  
0.2 ohmm 2000.  
Med Induction (ILM)  
0.2 ohmm 2000.  
Deep Induction (ILD)  
0.2 ohmm 2000.

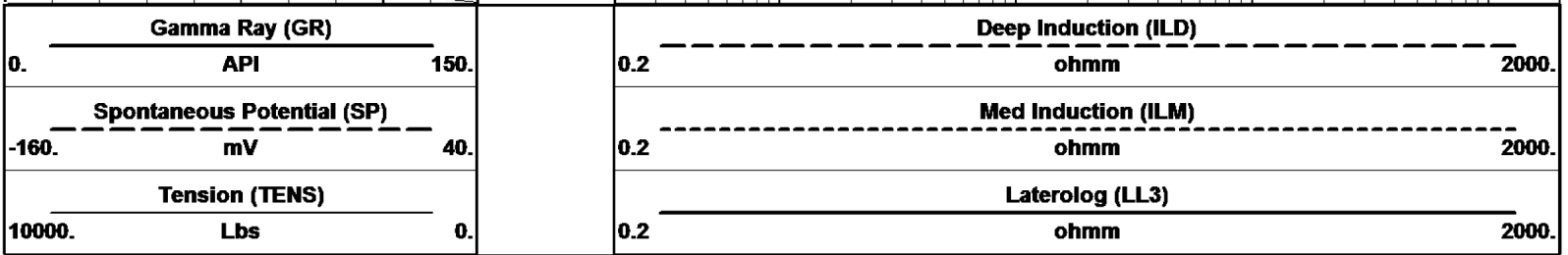
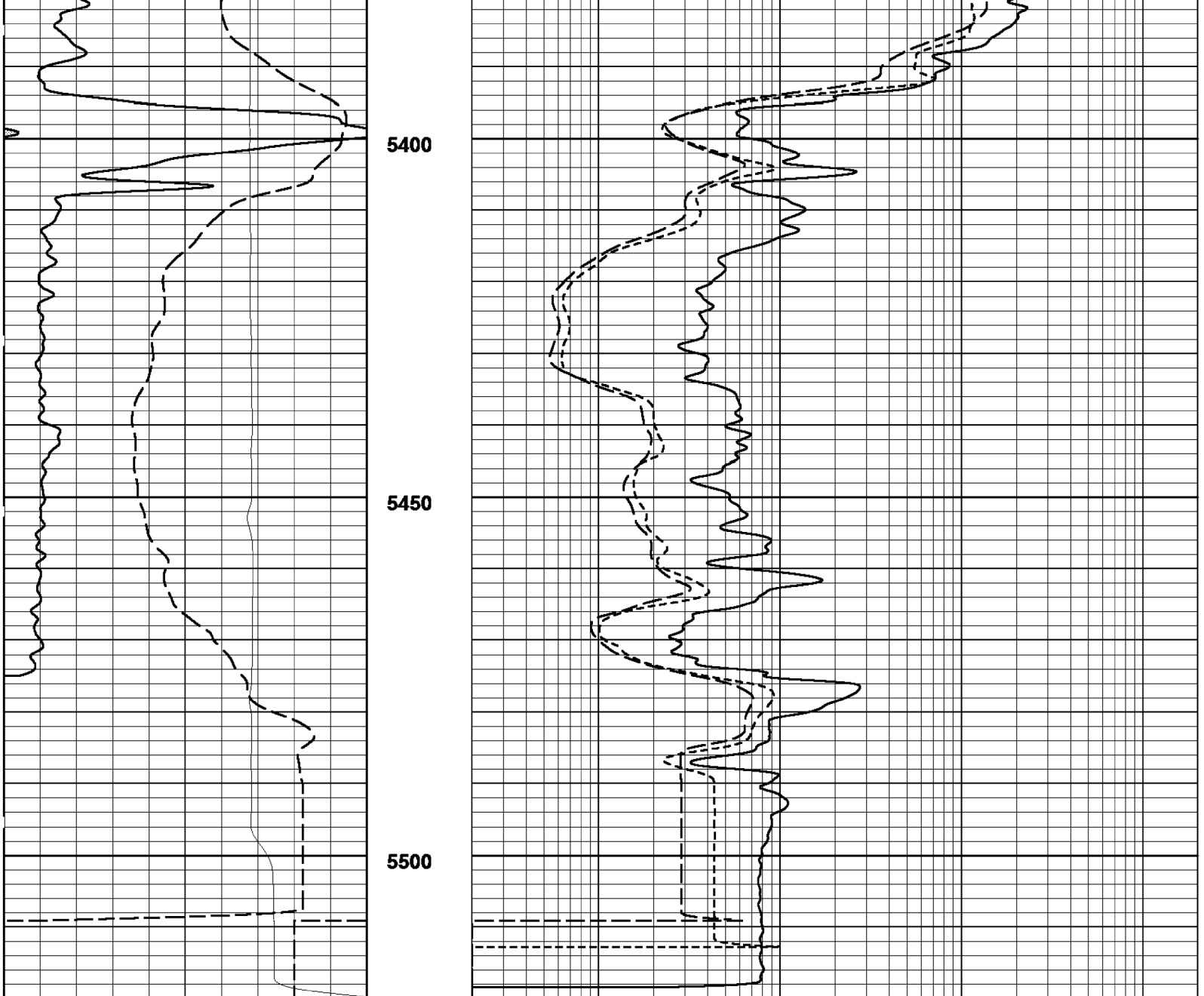


5200

5250

5300

5350



04/29/2012 **REPEAT PASS (5"/100ft)** Log UP - (VER 11.08)  
 16:36:54 => Start Time Start Depth=> 5520.00 Feet

### Induction Resistivity / Conductivity Calibrations

<b>TOOL TYPE</b>	Slim Hole Induction	<b>LOOP TYPE</b>	
<b>SERIAL NUM</b>	RD1011	<b>LOOP NUM</b>	

#### MASTER CALIBRATIONS

	OPEN LOOP(mmho)		CLOSED LOOP(mmho)		LOOP VERIFIER(mV)		CALIBRATION DATE	CALIBRATION TIME
	NO SKIN		NO SKIN	W/ SKIN	ZERO(mV)	SPAN(mV)		
DEEP INDUCTION	0.000		100.000	100.000	5.000	007.500	MAR29 5:00:00 AM	U.S.G. 45 10 00

DEEP INDUCTION	-0.000	400.000	499.231	5.948	637.718	M/D/Y> 5/26/2011	H:M:S> 15:18:28
MED INDUCTION	-0.000	462.500	501.895	26.229	710.829	M/D/Y> 5/26/2011	H:M:S> 15:33:50
SHALLOW LATERLOG	CALIBRATOR LOW(ohm)	CALIBRATOR HI(ohm)	LOW(mV)	HI(mV)			
	2.000	500.000	27.202	2531.018	M/D/Y> 5/26/2011	H:M:S> 15:44:11	

**WELL SITE CALIBRATIONS**

**GAMMA RAY CALIBRATION**

SERIAL NUM	RG3010
BLANKET NUM	1A

**MASTER CALIBRATIONS**

	BackGrnd	CalVal: 122.000 API	Gain/Offset	CALIBRATION DATE	CALIBRATION TIME
BASE CALS	112.627 - raw	699.200 - raw	0.208 - gain 0.000 - off	M/D/Y> 2/1/2012	H:M:S> 8:47:22

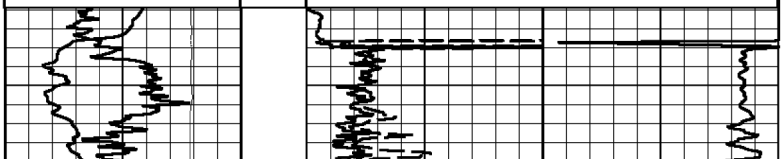
<b>Company</b>	<b>VAUGHN GOOD OIL COMPANY</b>
<b>Well</b>	<b>NUSSER #2-16</b>
<b>Field</b>	<b>SE HARDNER</b>
<b>County</b>	<b>BARBER</b>
<b>State</b>	<b>KANSAS</b>

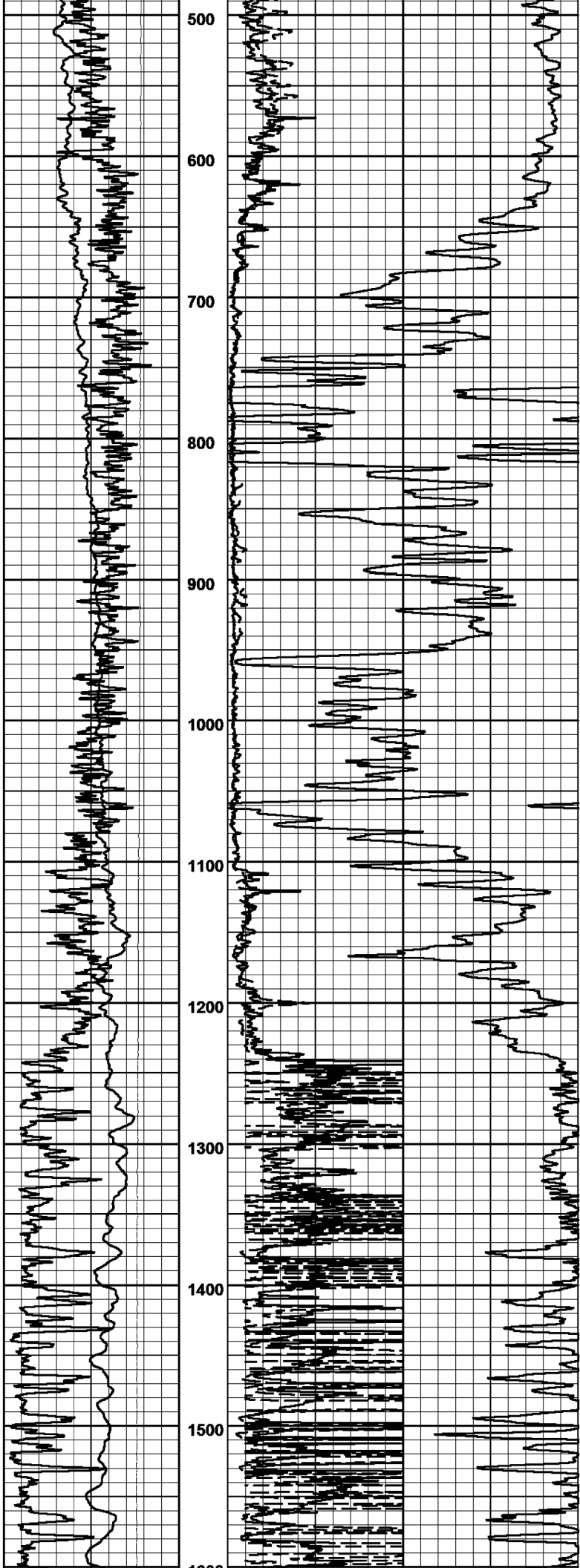


**DUAL INDUCTION  
LATEROLOG - SP  
GAMMA RAY**

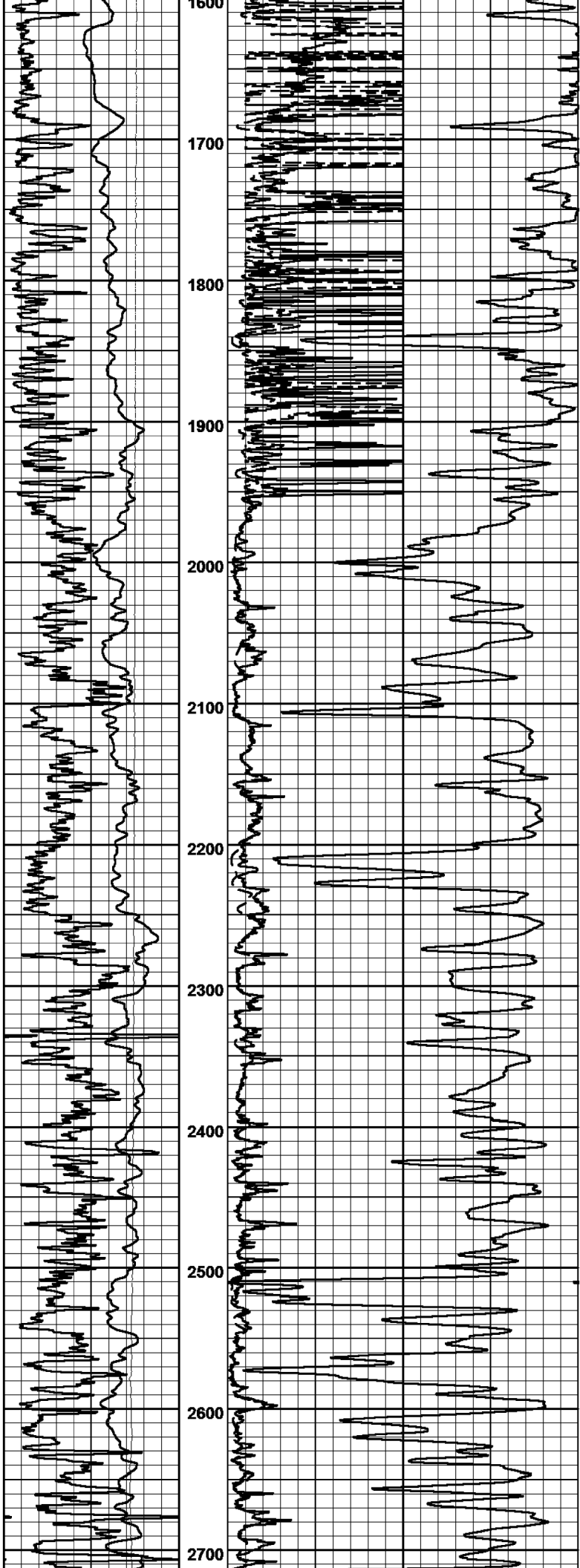
04/29/2012      MAIN PASS (1"/100FT) Log UP - (VER 11.08)  
18:25:12 => End Time      End Depth=> 410.00 Feet

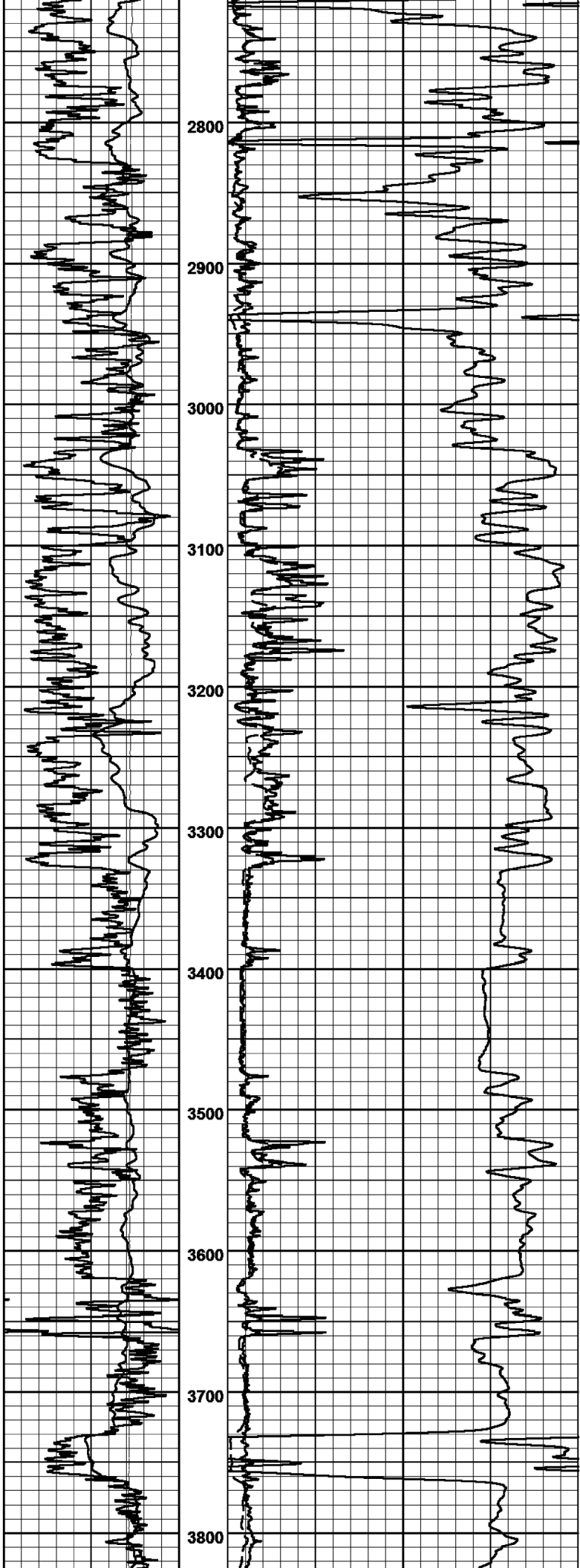
<b>Tension (TENS)</b> 10000. Lbs    0.	<b>Laterolog (LL3)</b> 0. ohmm    50.
<b>Spontaneous Potential (SP)</b> -160. mV    40.	<b>Deep Induction (ILD)</b> 0. ohmm    50.
<b>Gamma Ray (GR)</b> 0. API    150.	<b>Deep Induction (CILD)</b> 1000. mmhos    0.

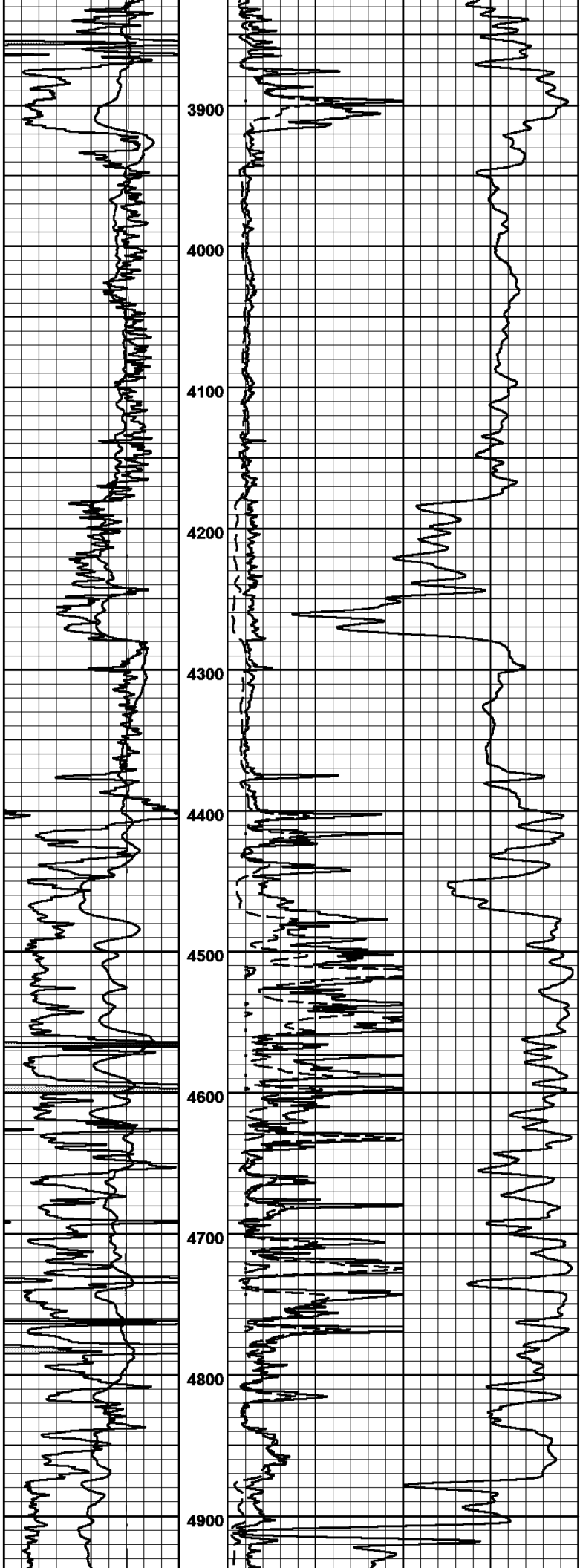


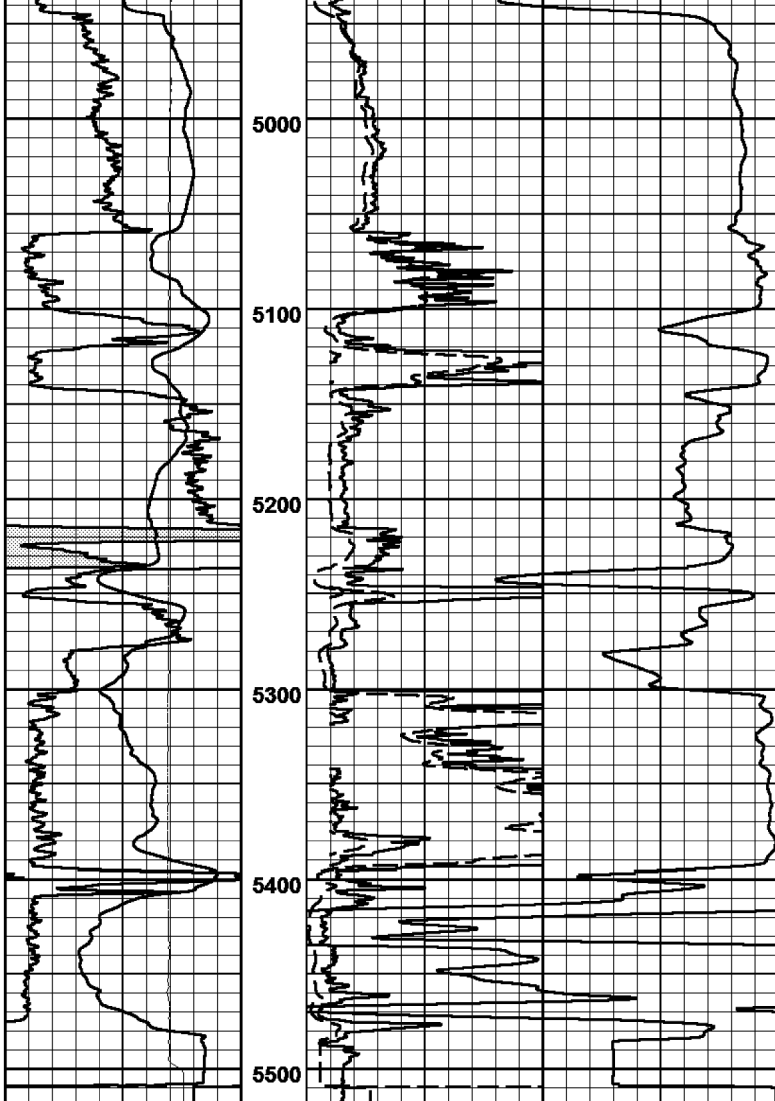












<b>Gamma Ray (GR)</b>		<b>Deep Induction (CILD)</b>	
0.	API 150.	1000.	mmhos 0.
<b>Spontaneous Potential (SP)</b>		<b>Deep Induction (ILD)</b>	
-160.	mV 40.	0.	ohmm 50.
<b>Tension (TENS)</b>		<b>Laterolog (LL3)</b>	
10000.	Lbs 0.	0.	ohmm 50.

04/29/2012      **MAIN PASS (1"/100FT) Log UP - (VER 11.08)**  
 16:52:36 => Start Time      Start Depth=> 5520.00 Feet



Hardcopy Produced By  
**RECON**  
 Petrotechnologies  
 Ltd.