



**MIDWEST SURVEYS**  
 LOGGING - PERFORATING - CONSULTING SERVICES  
 P.O. Box 66, Osawatomie, KS 66064  
 913 / 755 - 2128

**GAMMA RAY / NEUTRON / CCL**

File No.

Company **RJ Enterprises**

Well **Norman Unit No. 27-N**

Field **Davis - Bronson**

County **Allen** State **Kansas**

Location **849' FSL & 2475' FEL**

Other Services  
**Perforate**

Sec. **34** Twp. **23S** Rge. **21E**

Permanent Datum **GL** Elevation **NA**

Log Measured From **GL** K.B. **NA**

Drilling Measured From **GL** D.F. **NA**

Date **07-03-2012** Elevation **GL NA**

Run Number **One**

Depth Driller **753.0**

Depth Logger **755.7**

Bottom Logged Interval **754.7**

Top Log Interval **20.0**

Fluid Level **Full**

Type Fluid **Water**

Density /Viscosity **NA**

Salinity -PPM/Cl **NA**

Max Recorded Temp **NA**

Estimated Cement Top **0.0**

Equipment No. **107** Location **Osawatomie**

Recorded By **Steve Windisch**

Witnessed By **Jason Kent**

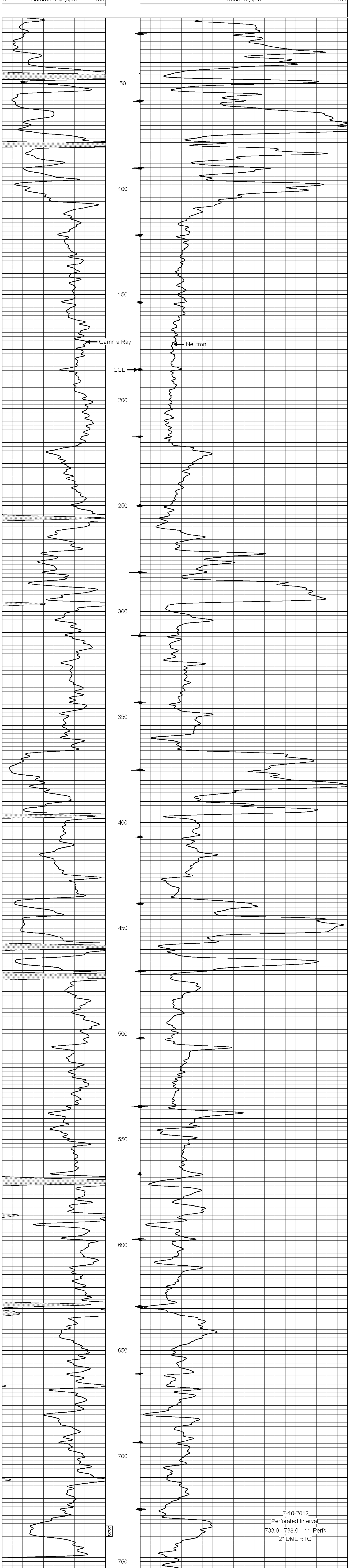
| BOREHOLE RECORD |          | CASING RECORD |       | TO     |      |       |
|-----------------|----------|---------------|-------|--------|------|-------|
| Run No.         | BIT FROM | TO            | SIZE  | WGT.   | FROM | TO    |
| One             | 9.875"   | 20.0          | 7.00" | 0.0    | 20.0 | 20.0  |
| Two             | 5.625"   | 20.0          | 7.930 | 2.875" | 0.0  | 756.6 |

<<< Fold Here >>>

All interpretations are opinions based on inferences from electrical or other measurements and we cannot and do not guarantee the accuracy or correctness of any interpretation, and we shall not, except in the case of gross or willful negligence on our part, be liable or responsible for any loss, costs, damages, or expenses incurred or sustained by anyone resulting from any interpretation made by any of our officers, agents or employees. These interpretations are also subject to our general terms and conditions set out in our current Price Schedule.

Comments  
  
 Drilling Contractor :  
**RJ Enterprises**

Database File: norman27n.db  
 Dataset Pathname: pass1  
 Presentation Format: gr-n-ccl  
 Dataset Creation: Tue Jul 03 13:13:47 2012 by Log SCH 111116  
 Charted by: Depth in Feet scaled 1:240



7-10-2012  
 Perforated Interval  
 733.0 - 738.0 11 Perfs.  
 2" DML RTG