



MIDWEST SURVEYS
 LOGGING - PERFORATING - CONSULTING SERVICES
 P.O. Box 68, Osawatomie, KS 66064
 913 / 755 - 2128

GAMMA RAY / NEUTRON / CCL

File No. _____

Company **RJ Enterprises**

Well **Norman Unit No. 23-N**

Field **Davis - Bronson**

County **Allen** State **Kansas**

Location **914' FSL & 453' FEL**

SW-NE-SE-SE

Sec. **34** Twp. **23S** Rge. **21E**

Permament Datum **GL** Elevation **NA**

Log Measured From **GL** K.B. **NA**

Drilling Measured From **GL** D.F. **NA**

Date **07-03-2012**

Run Number **One**

Depth Driller **667.0**

Depth Logger **658.9**

Bottom Logged Interval **657.9**

Top Log Interval **20.0**

Fluid Level **Full**

Run No.	BIT	BOREHOLE RECORD	TO	SIZE	WGT.	CASINGS RECORD	FROM	TO
One	9.875"	0.0	20.0	7.00"	0.0	0.0	20.0	20.0
Two	5.625"	20.0	697.0	2.875"	0.0	0.0	691.5	691.5

Type Fluid	Density / Viscosity	Salinity - PPM Cl	Max. Recorded Temp	Equipment No.	Location	Recorded By
Water	NA	NA	NA	107	Osawatomie	Steve Winkisch
Witnessed By	Jason Kent					

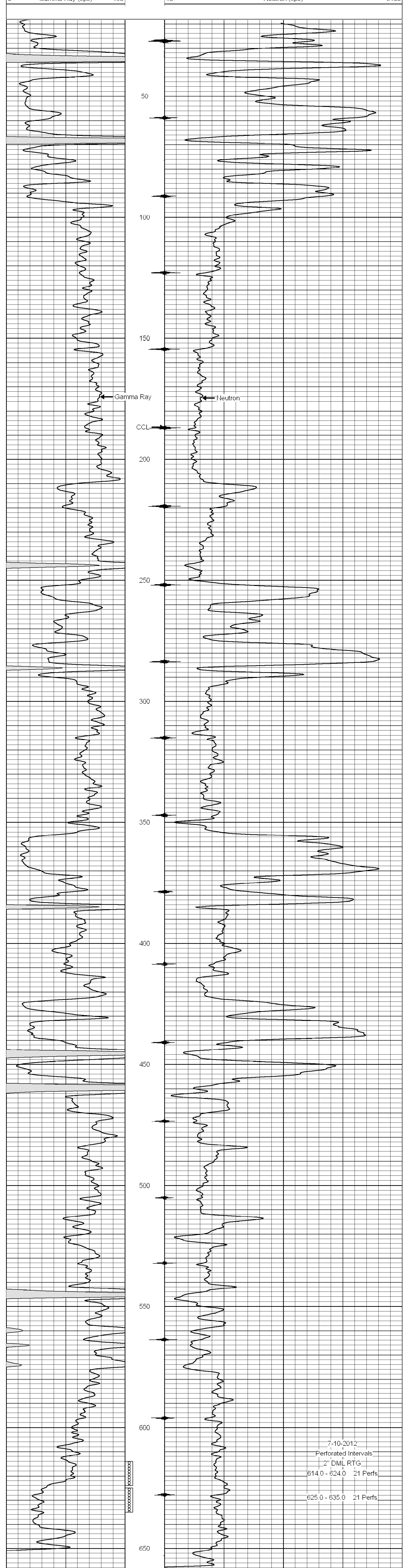
<<< Fold Here >>>

All interpretations are opinions based on inferences from electrical or other measurements and we cannot and do not guarantee the accuracy or correctness of any interpretation, and we shall not, except in the case of gross or willful negligence on our part, be liable or responsible for any loss, costs, damages, or expenses incurred or sustained by anyone resulting from any interpretation made by any of our officers, agents or employees. These interpretations are also subject to our general terms and conditions set out in our current Price Schedule.

Comments

Drilling Contractor :
RJ Enterprises

Database File: norman23n.db
 Dataset Pathname: pass1
 Presentation Format: gr-n-ccl
 Dataset Creation: Tue Jul 03 11:26:44 2012 by Log SCH 111116
 Charted by: Depth in Feet scaled 1:240



7-10-2012
 Perforated Intervals
 2" DML RTG
 614.0 - 624.0 21 Perfs
 625.0 - 635.0 21 Perfs