

MIDWEST SURVEYS
 LOGGING - PERFORATING - CONSULTING SERVICES
 P.O. Box 68, Osawatomie, KS 66064
 913.755-2128

GAMMA RAY / NEUTRON / CCL

File No: _____

Company: **Laymon Oil II, LLC.**

Well: **Keske No. 26-12**

Field: **Vernon**

County: **Woodson** State: **Kansas**

Location: **5115 FSL & 1925 FEL**

Other Services: **Perforate**

Sec: **34** Type: **23S** Rq: **16e** Elev: **NA**

Perm: **GL** Log: **GL** Elev: **NA**

Log Meas: **GL** Elev: **NA**

Drilling Meas: **GL** Elev: **NA**

Date: **07-11-2012**

Run Number: **One**

Depth Logger: **1480.0**

Bottom Logged Interval: **1474.0**

Top Log Interval: **200.0**

Fluid Level: **Full**

Type Fluid: _____

Density / Viscosity: _____

Sammy / PPM/Cl: _____

Max Recorded Temp: _____

Estimated Cement Top: _____

Equipment No: _____

Location: **107 Osawatomie**

Recorded By: **Steve Vindisch**

Witnessed By: **Mike Laymon**

BOREHOLE RECORD				CASING RECORD			
Run	BIT	FROM	TO	SIZE	WGHT	FROM	TO
One	12" 25'	0.0	40.0	8.635"	0.0	0.0	40.0
Two	6.75"	40.0	1480.0	4.50"	0.0	0.0	1475.0

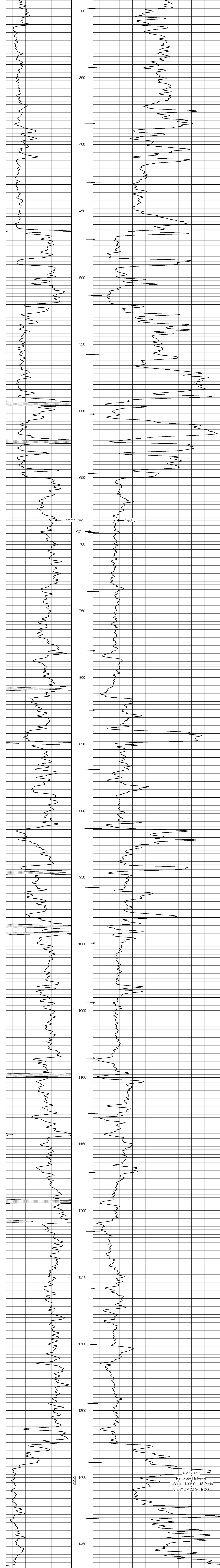
<<< Fold Here >>>

All interpretations are opinions based on inferences from electrical or other measurements and we cannot and do not guarantee the accuracy or correctness of any interpretation, and we shall not, except in the case of gross or willful negligence on our part, be liable or responsible for any loss, costs, damages, or expenses incurred or sustained by anyone resulting from any interpretation made by any of our officers, agents or employees. These interpretations are also subject to our general terms and conditions set out in our current Price Schedule.

Comments

Drilling Contractor : **Laymon Oil II, LLC**

Database File: keske26.db
 Dataset Pathname: pass1
 Presentation Format: gr-n-cl
 Dataset Creation: Wed Jul 11 09:20:25 2012 by Log SCH 111116
 Charted by: Depth in Feet scaled 1:240



0 Gamma Ray (cps) 150 10 Neutron (cps) 2100