



**SUPERIOR**  
Hays,  
Kansas

**MICRO**  
LOG

Company DOWNING NELSON OIL COMPANY, INC.  
Well HOCKERSMITH-ROBBEN #1-29  
Field WILDCAT  
County THOMAS  
State KANSAS

Company DOWNING NELSON OIL COMPANY, INC.  
Well HOCKERSMITH-ROBBEN #1-29  
Field WILDCAT  
County THOMAS  
State KANSAS

Location: API # : 15-193-20856-0000  
1320' FSL & 1945' FWL  
(E2 - W2 - E2 - SW)  
SEC 29 TWP 9S RGE 31W  
Permanent Datum GROUND LEVEL Elevation 3038  
Log Measured From KELLY BUSHING & A.G.L.  
Drilling Measured From KELLY BUSHING  
Elevation  
K.B. 3046  
D.F. 3044  
G.L. 3038

Date	8/14/12		
Run Number	TWO		
Depth Driller	4710		
Depth Logger	4711		
Bottom Logged Interval	4693		
Top Log Interval	3600		
Casing Driller	8 5/8" @ 292'		
Casing Logger	290		
Bit Size	7 7/8		
Type Fluid in Hole	CHEMICAL MUD	CHLORIDES 800 PPM	
Density / Viscosity	8.9/61		
pH / Fluid Loss	11.0/7.6		
Source of Sample	FLOWLINE		
Rin @ Meas. Temp	1.0 @ 95F		
Rmf @ Meas. Temp	.75 @ 95F		
Rmc @ Meas. Temp	1.2 @ 95F		
Source of Rmf / Rmc	MEASURED		
Rin @ BHT	.76 @ 124F		
Time Circulation Stopped	2 HOURS		
Time Logger on Bottom			
Maximum Recorded Temperature	124F		
Equipment Number	680		
Location	HAYS, KS.		
Recorded By	JASON CAPPELLUCCI		
Witnessed By	RON NELSON		

<<< Fold Here >>>

All interpretations are opinions based on inferences from electrical or other measurements and we cannot and do not guarantee the accuracy or correctness of any interpretation, and we shall not, except in the case of gross or willful negligence on our part, be liable or responsible for any loss, costs, damages, or expenses incurred or sustained by anyone resulting from any interpretation made by any of our officers, agents or employees. These interpretations are also subject to our general terms and conditions set out in our current Price Schedule.

Comments

THANK YOU FOR USING SUPERIOR WELL SERVICE (785) 628-6395  
DIRECTIONS  
I-70 & CAMPUS RD. - 8 N. TO RD. H ( FORK IN THE RD.) - 3 1/2 W. - N. INTO

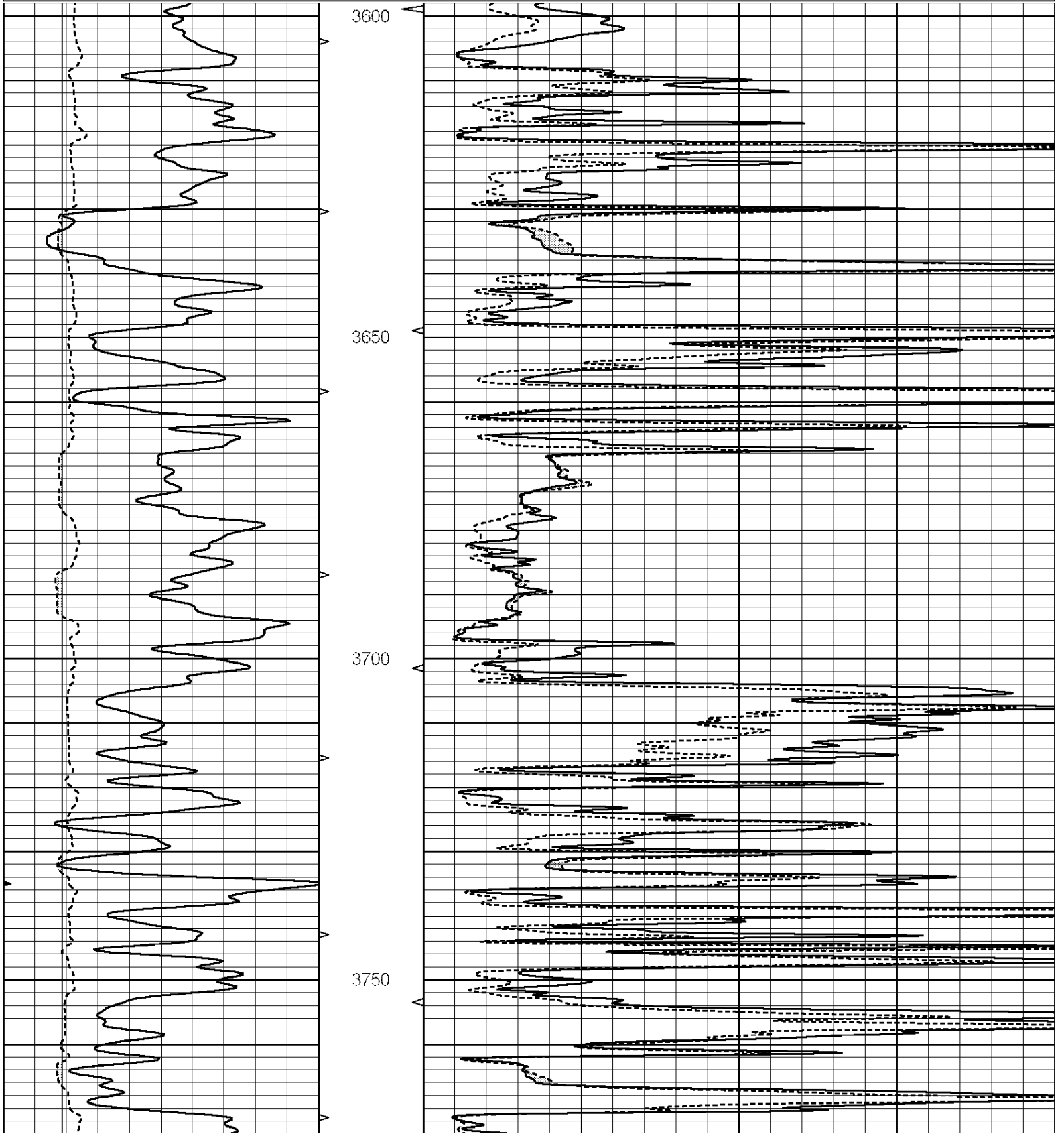


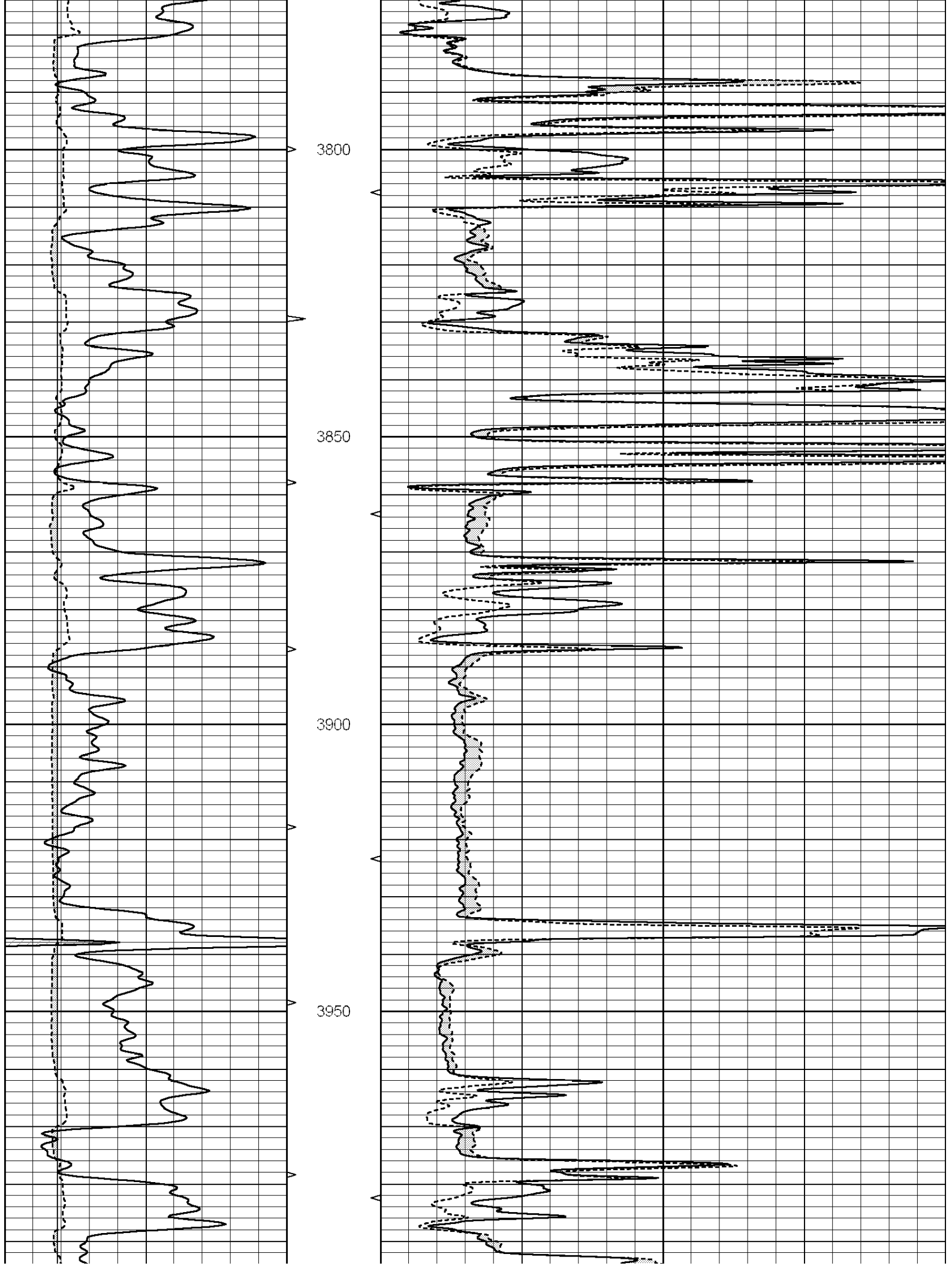
**SUPERIOR**  
Hays,  
Kansas

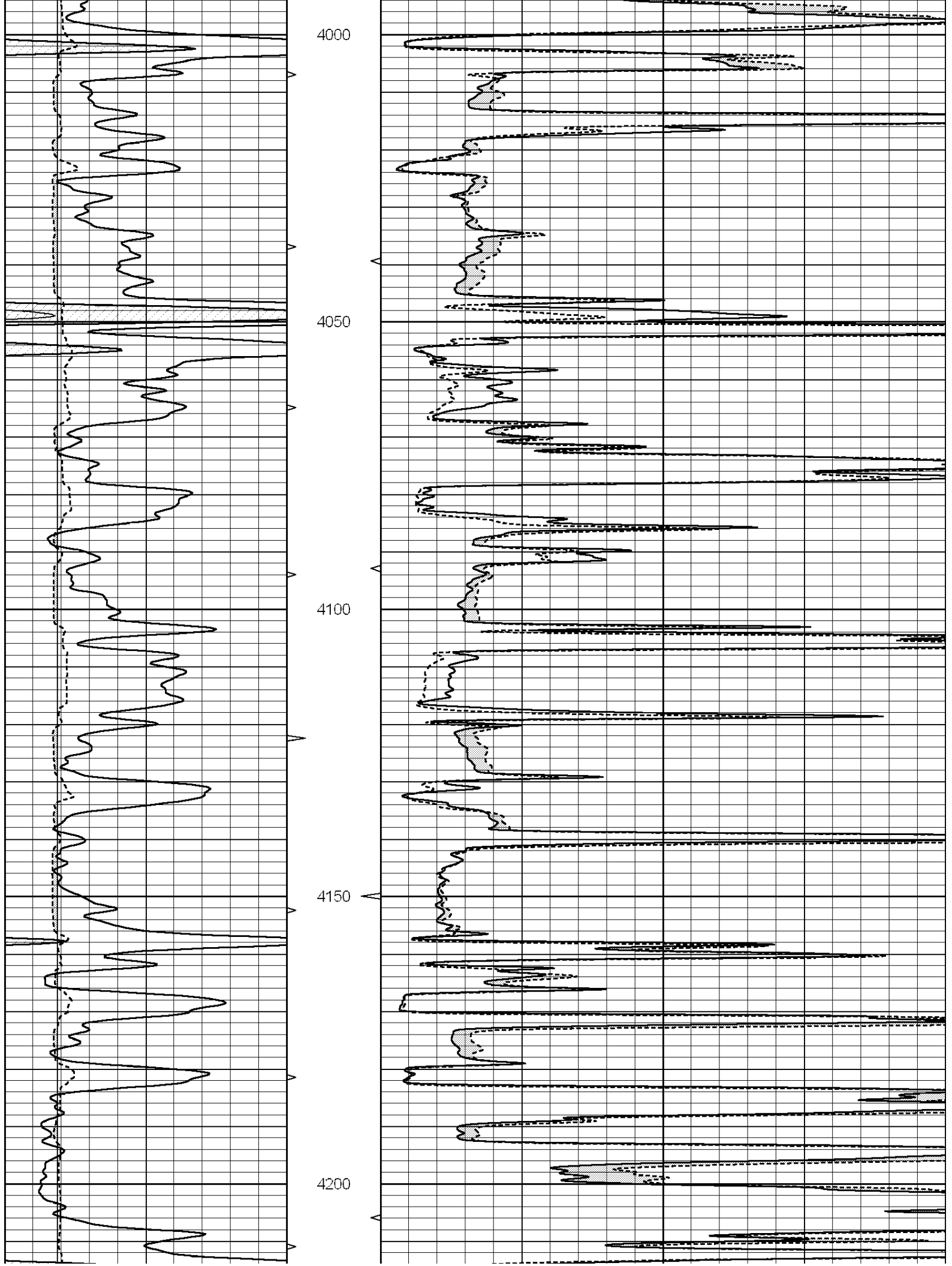
**MAIN SECTION**

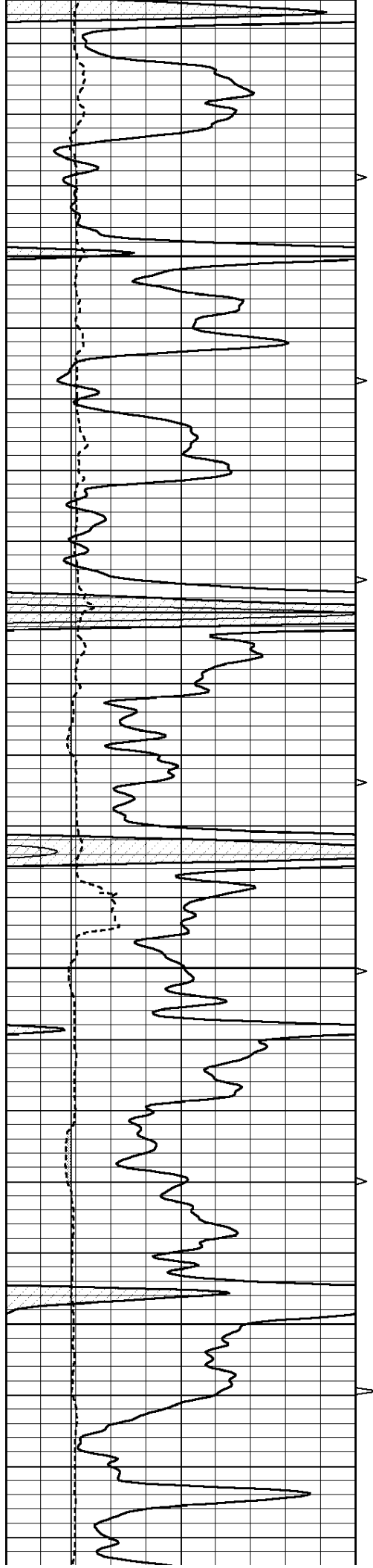
Database File: 009580ddn.db  
 Dataset Pathname: pass6.1  
 Presentation Format: \_micro  
 Dataset Creation: Tue Aug 14 20:35:39 2012 by Calc Open-Cased 090629  
 Charted by: Depth in Feet scaled 1:240

0	GAMMA RAY (GAPI)	150	ABHV	0	MEL1.5 (Ohm-m)	40
6	CALIPER (in)	16	10 (ft3)	0 0	MEL2.0 (Ohm-m)	40
			TBHV			
			0 (ft3)	10		







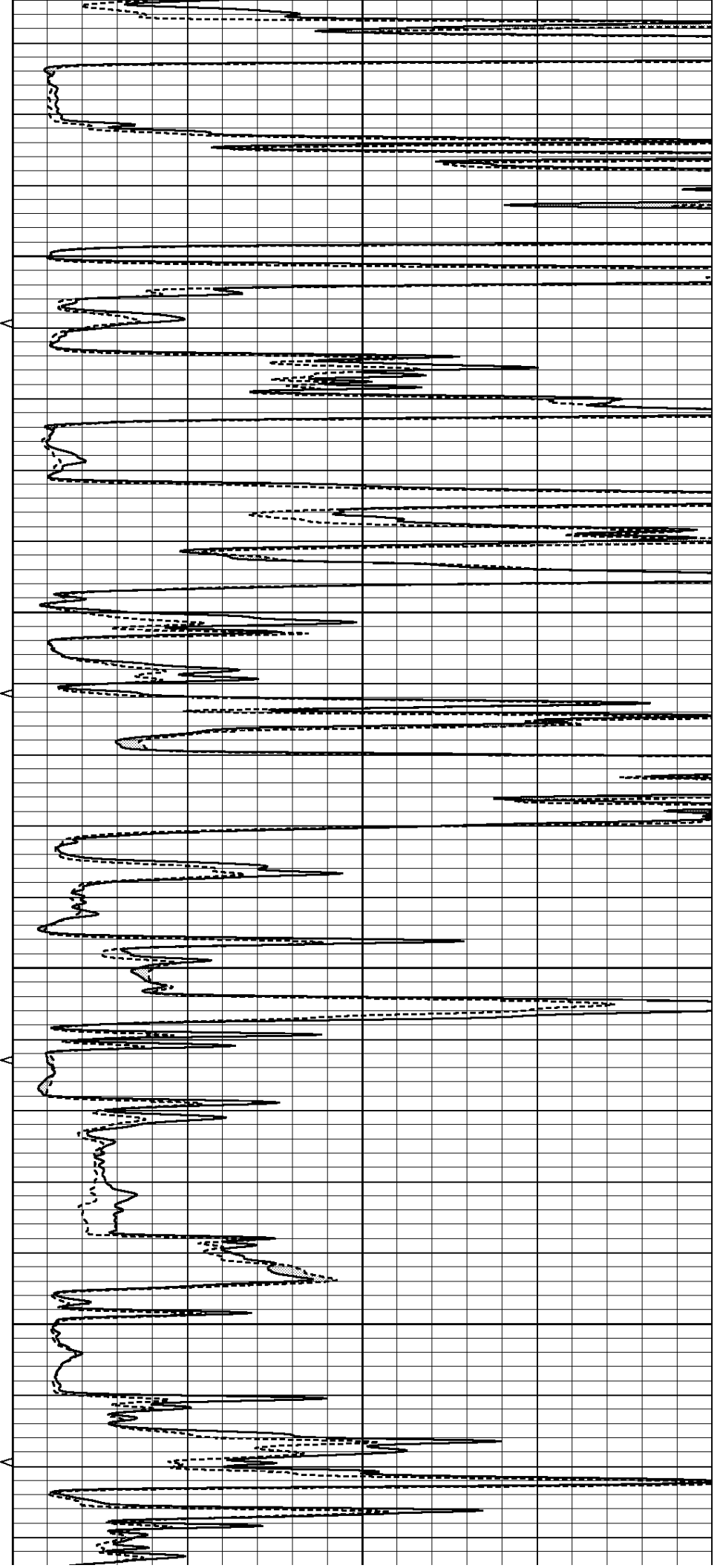


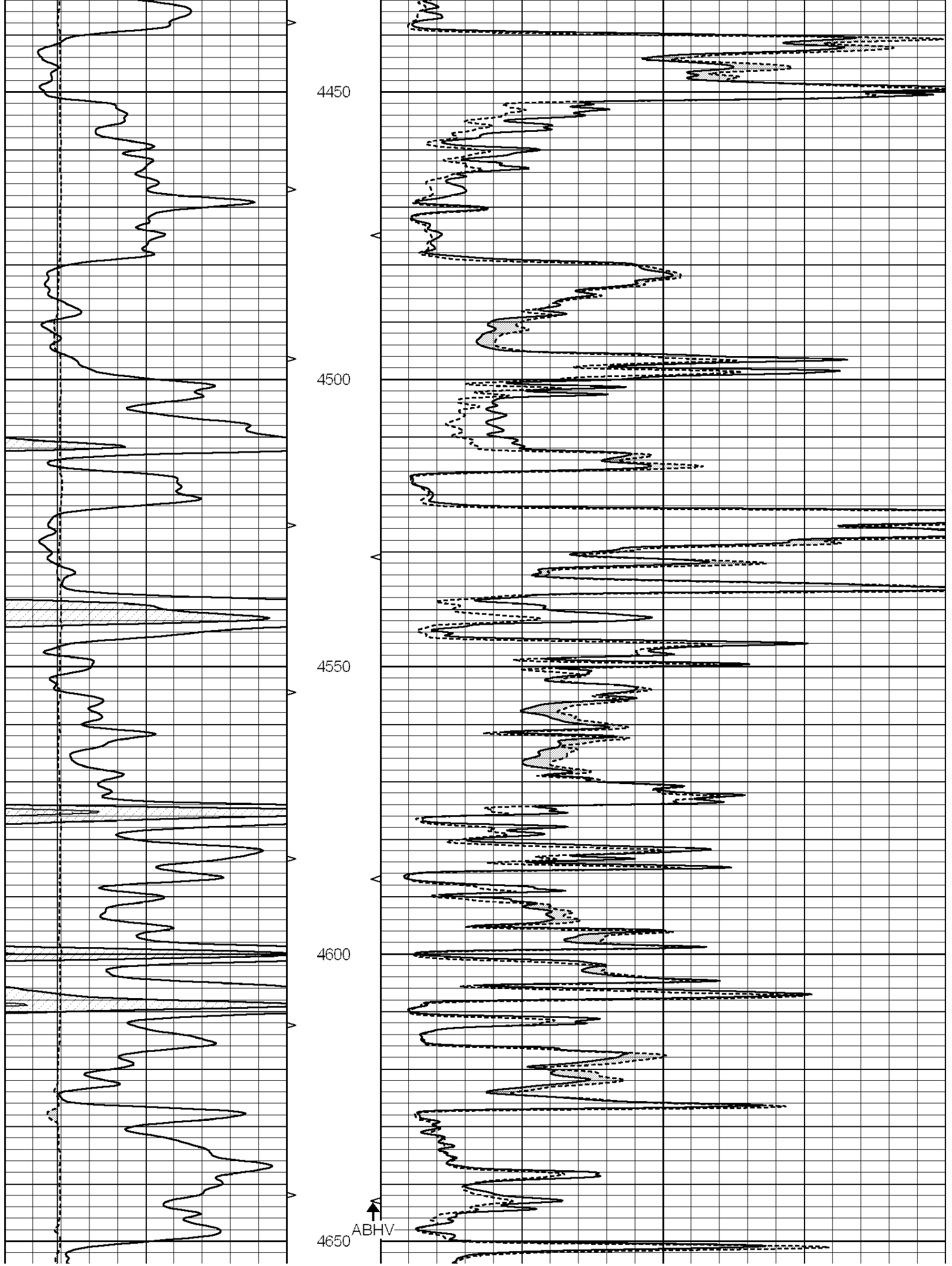
4250

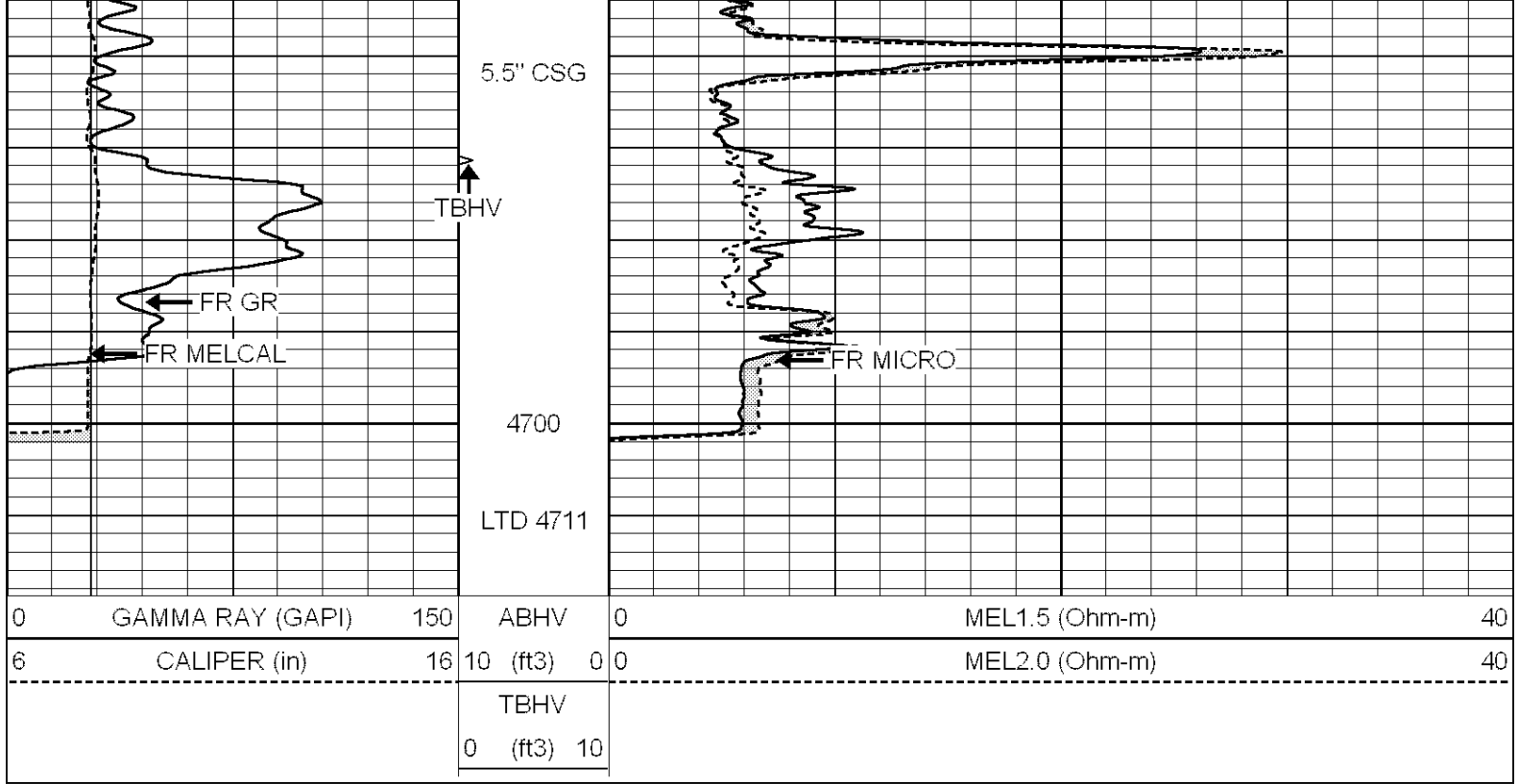
4300

4350

4400





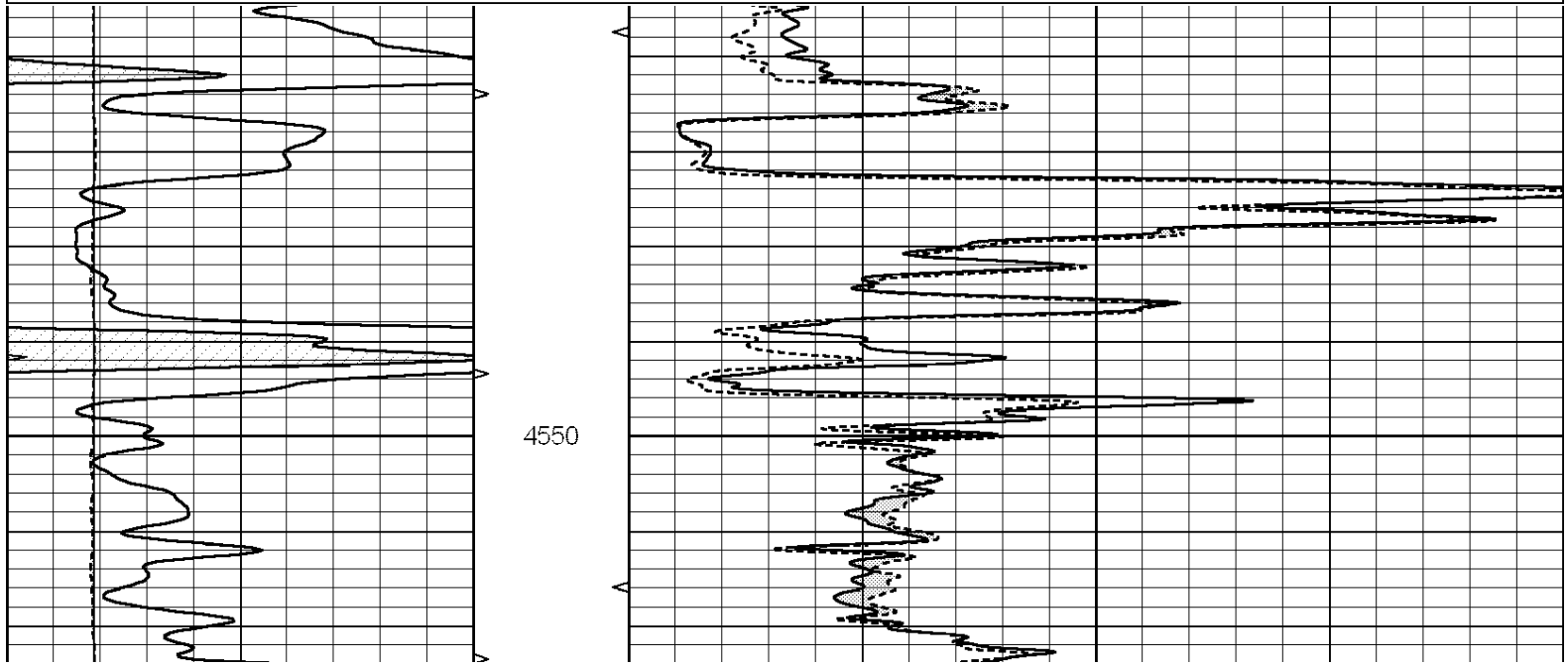


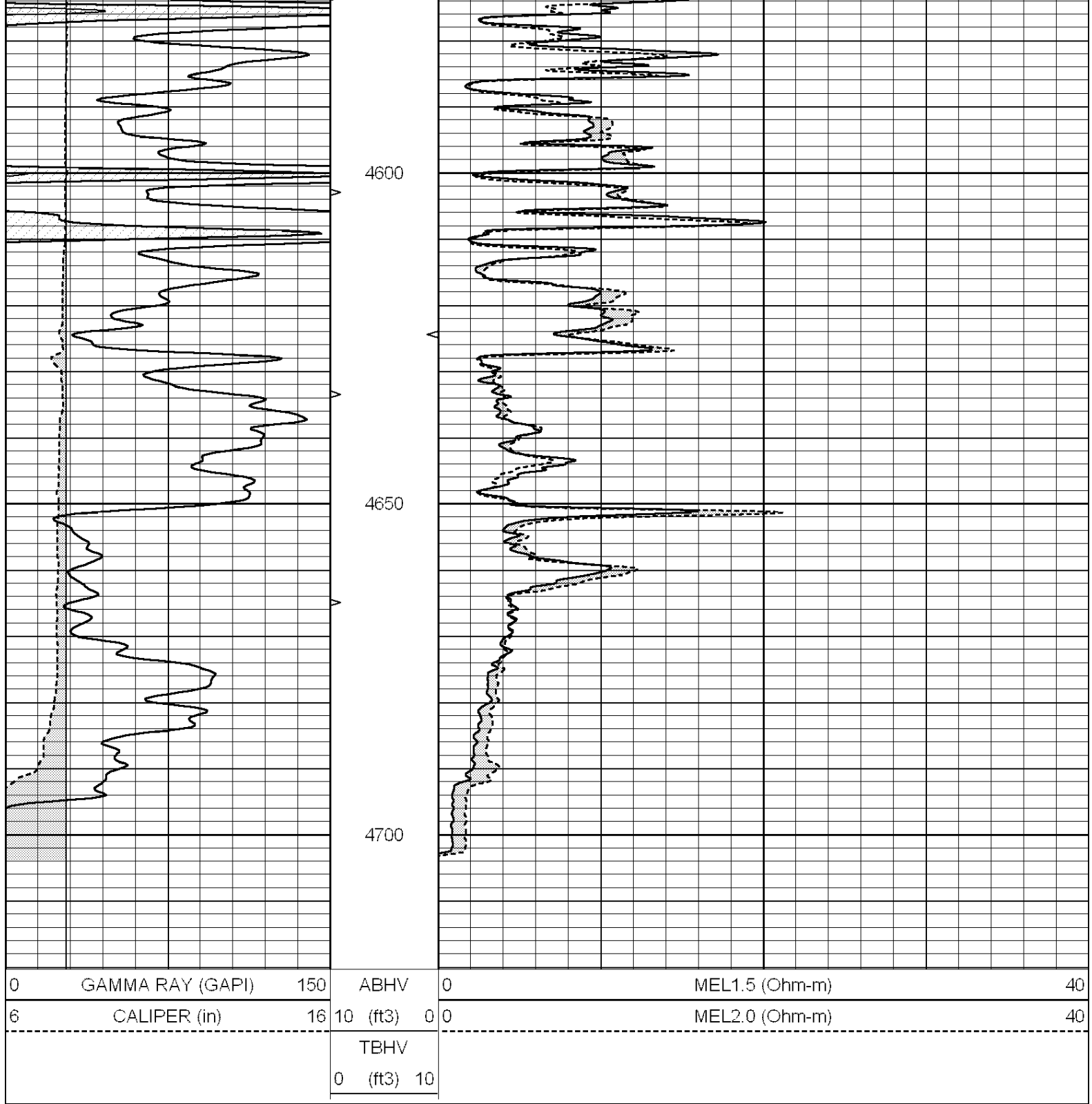
SUPERIOR  
Hays,  
Kansas

# REPEAT SECTION

Database File: 009580ddn.db  
 Dataset Pathname: pass5.1  
 Presentation Format: \_micro  
 Dataset Creation: Tue Aug 14 20:21:30 2012 by Calc Open-Cased 090629  
 Charted by: Depth in Feet scaled 1:240

0	GAMMA RAY (GAPI)	150	ABHV	0	MEL1.5 (Ohm-m)	40
6	CALIPER (in)	16	10 (ft3)	0 0	MEL2.0 (Ohm-m)	40
			TBHV			
			0 (ft3)	10		





### Calibration Report

Database File: 009580ddn.db  
 Dataset Pathname: pass6.1  
 Dataset Creation: Tue Aug 14 20:35:39 2012 by Calc Open-Cased 090629

### MICRO Calibration Report

Serial Number: MICRO3  
 Tool Model: PROBE  
 Performed: Thu Nov 17 03:06:31 2011

Caliper Calibration: Gain=3.916      Offset=-9.671

References: Low Cal 8.000      High Cal 14.000



References	0.000	14.000
Readings	4.257	5.789

1.5" Calibration:	Gain=150.000	Offset=-1.000
References	Low Cal 0.000	High Cal 20.000
Readings	0.004	0.228

2" Calibration:	Gain=110.553	Offset=-0.220
References	Low Cal 0.000	High Cal 20.000
Readings	0.005	0.175

Gamma Ray Calibration Report

Serial Number:	#8	
Tool Model:	OPEN	
Performed:	Mon Jun 13 16:56:43 2011	
Calibrator Value:	150.0	GAPI
Background Reading:	0.0	cps
Calibrator Reading:	175.0	cps
Sensitivity:	0.8371	GAPI/cps