



SUPERIOR
Hays,
Kansas

SONIC
LOG

Company DOWNING NELSON OIL COMPANY, INC.
Well HOCKERSMITH-ROBBEN #1-29
Field WILDCAT
County THOMAS
State KANSAS

Company DOWNING NELSON OIL COMPANY, INC.
Well HOCKERSMITH-ROBBEN #1-29
Field WILDCAT
County THOMAS State KANSAS

Location: API # : 15-193-20856-0000
1320' FSL & 1945' FWL
(E2 - W2 - E2 - SW)
SEC 29 TWP 9S RGE 31W
Permanent Datum GROUND LEVEL Elevation 3038
Log Measured From KELLY BUSHING & A.G.L.
Drilling Measured From KELLY BUSHING
Elevation
K.B. 3046
D.F. 3044
G.L. 3038

Date	8/14/12
Run Number	TWO
Depth Driller	4710
Depth Logger	4711
Bottom Logged Interval	4701
Top Log Interval	250
Casing Driller	8 5/8" @ 292'
Casing Logger	290
Bit Size	7 7/8
Type Fluid in Hole	CHEMICAL MUD
Density / Viscosity	8.9/61
pH / Fluid Loss	11.0/7.6
Source of Sample	FLOWLINE
Rin @ Meas. Temp	1.0 @ 95F
Rmf @ Meas. Temp	.75 @ 95F
Rmc @ Meas. Temp	1.2 @ 95F
Source of Rmf / Rmc	MEASURED
Rin @ BHT	.76 @ 124F
Time Circulation Stopped	2 HOURS
Time Logger on Bottom	
Maximum Recorded Temperature	124F
Equipment Number	680
Location	HAYS, KS.
Recorded By	JASON CAPPELLUCCI
Witnessed By	RON NELSON

<<< Fold Here >>>

All interpretations are opinions based on inferences from electrical or other measurements and we cannot and do not guarantee the accuracy or correctness of any interpretation, and we shall not, except in the case of gross or willful negligence on our part, be liable or responsible for any loss, costs, damages, or expenses incurred or sustained by anyone resulting from any interpretation made by any of our officers, agents or employees. These interpretations are also subject to our general terms and conditions set out in our current Price Schedule.

Comments

THANK YOU FOR USING SUPERIOR WELL SERVICE (785) 628-6395
DIRECTIONS
I-70 & CAMPUS RD. - 8 N. TO RD. H (FORK IN THE RD.) - 3 1/2 W. - N. INTO

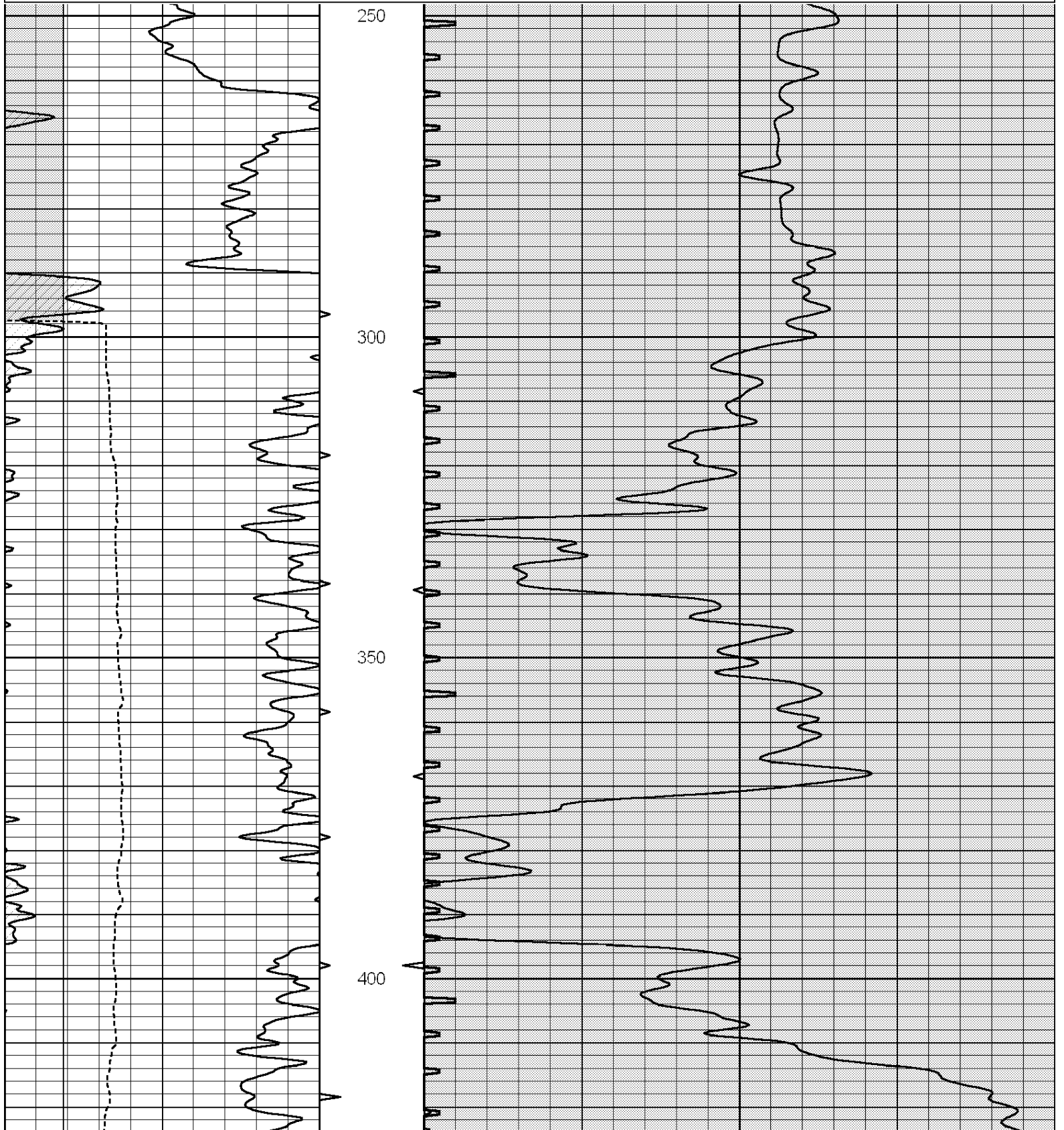


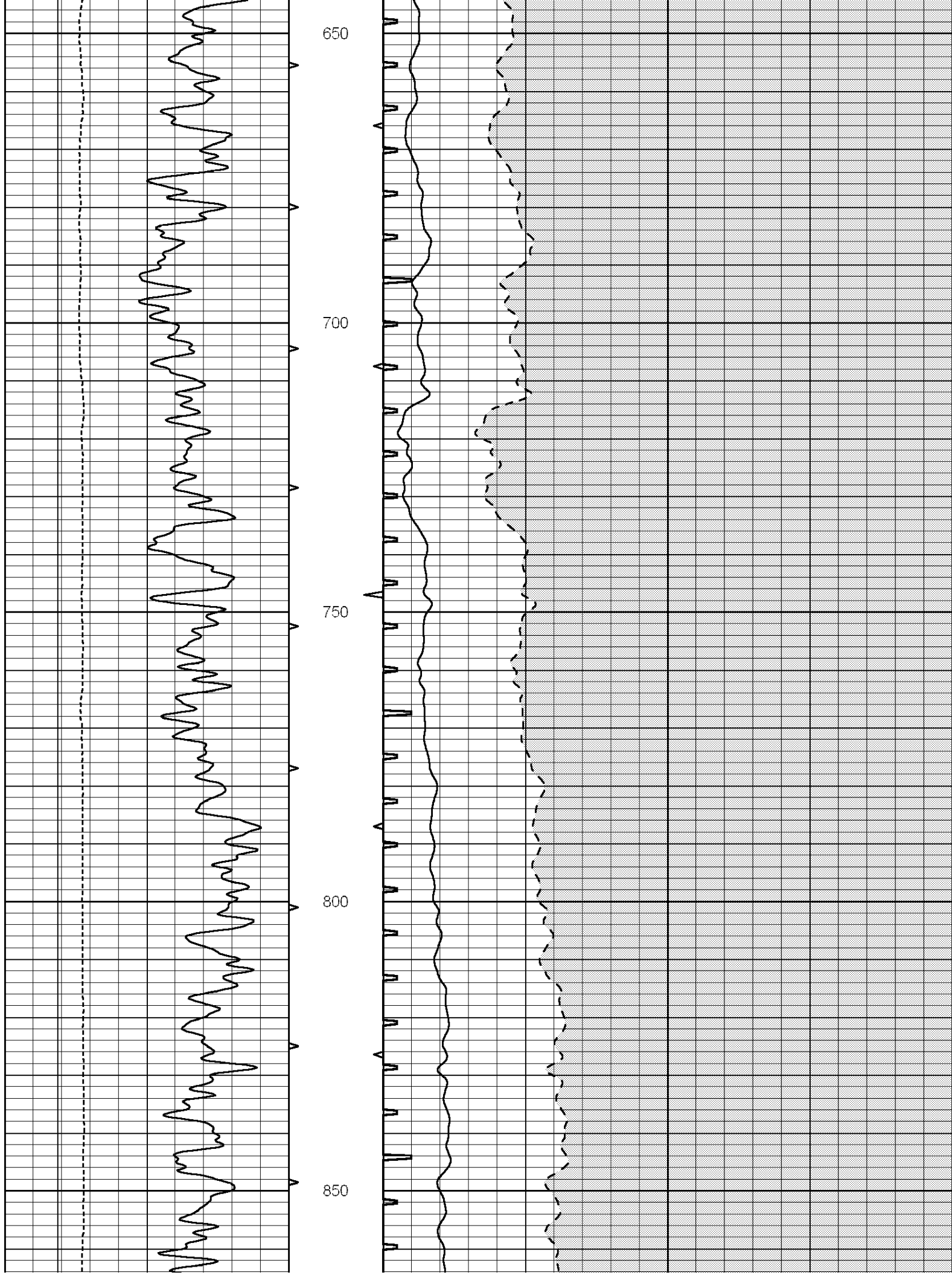
SUPERIOR
Hays,
Kansas

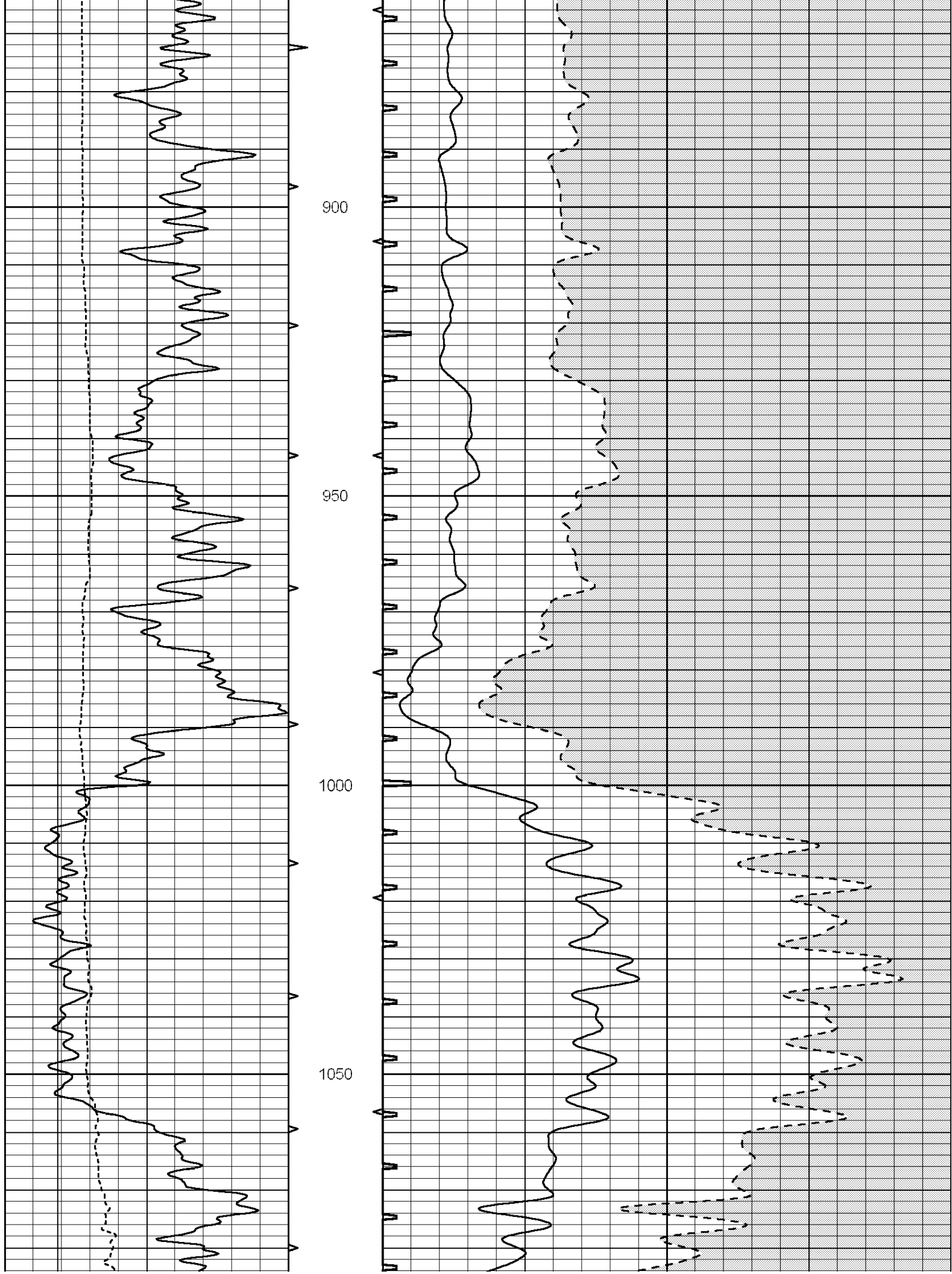
MAIN SECTION

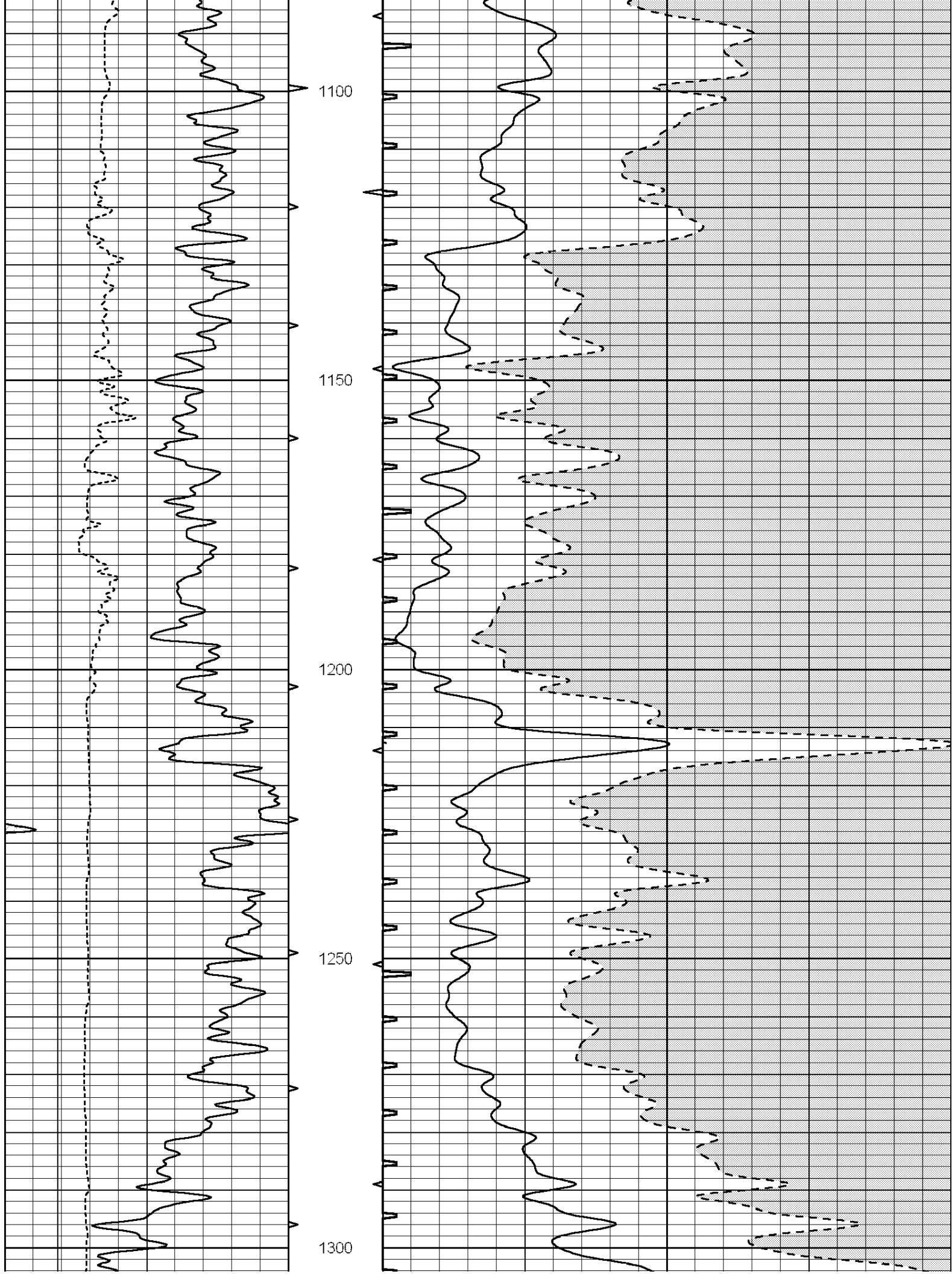
Database File: 009580ddn.db
 Dataset Pathname: pass6.3
 Presentation Format: _slt
 Dataset Creation: Tue Aug 14 21:22:57 2012 by Calc Open-Cased 090629
 Charted by: Depth in Feet scaled 1:240

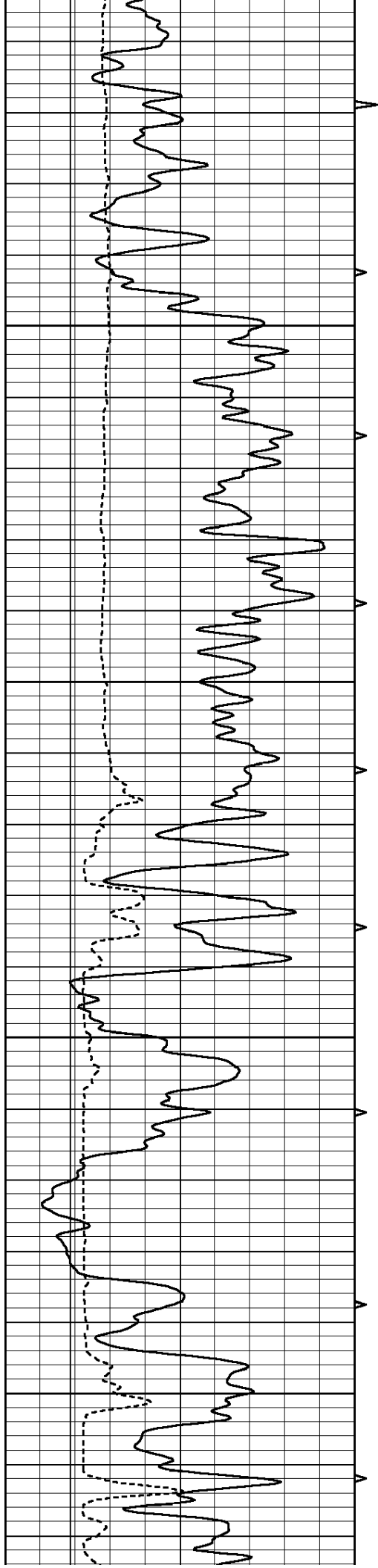
0	GAMMA RAY (GAPI)	150	ABHV	140	DELTA TIME (usec/ft)	40
6	CALIPER (in)	16	10 (ft3)	0	30	SONIC POROSITY (pu)
-----			-----			
			TBHV	0	ITT (msec)	20
			0 (ft3)	10		









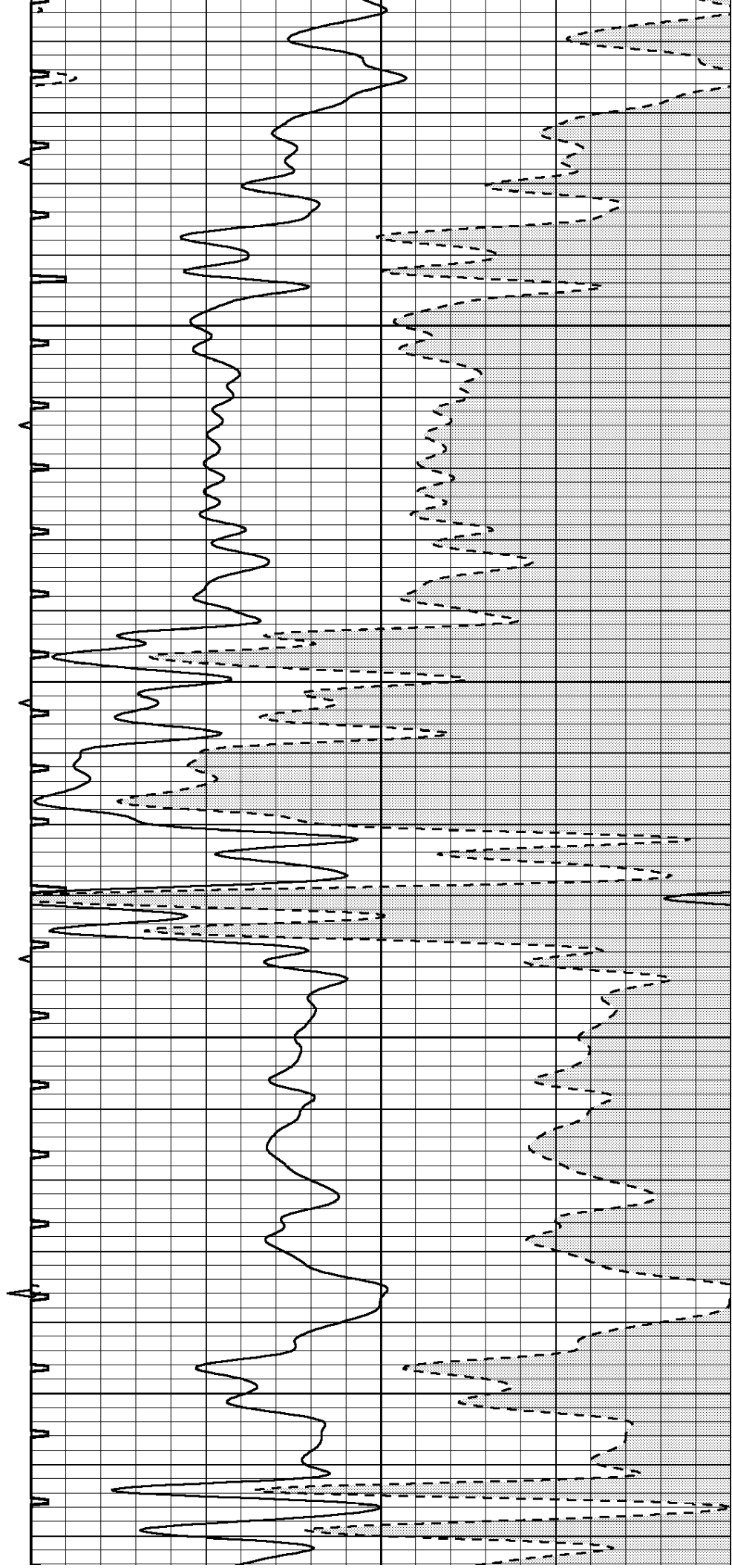
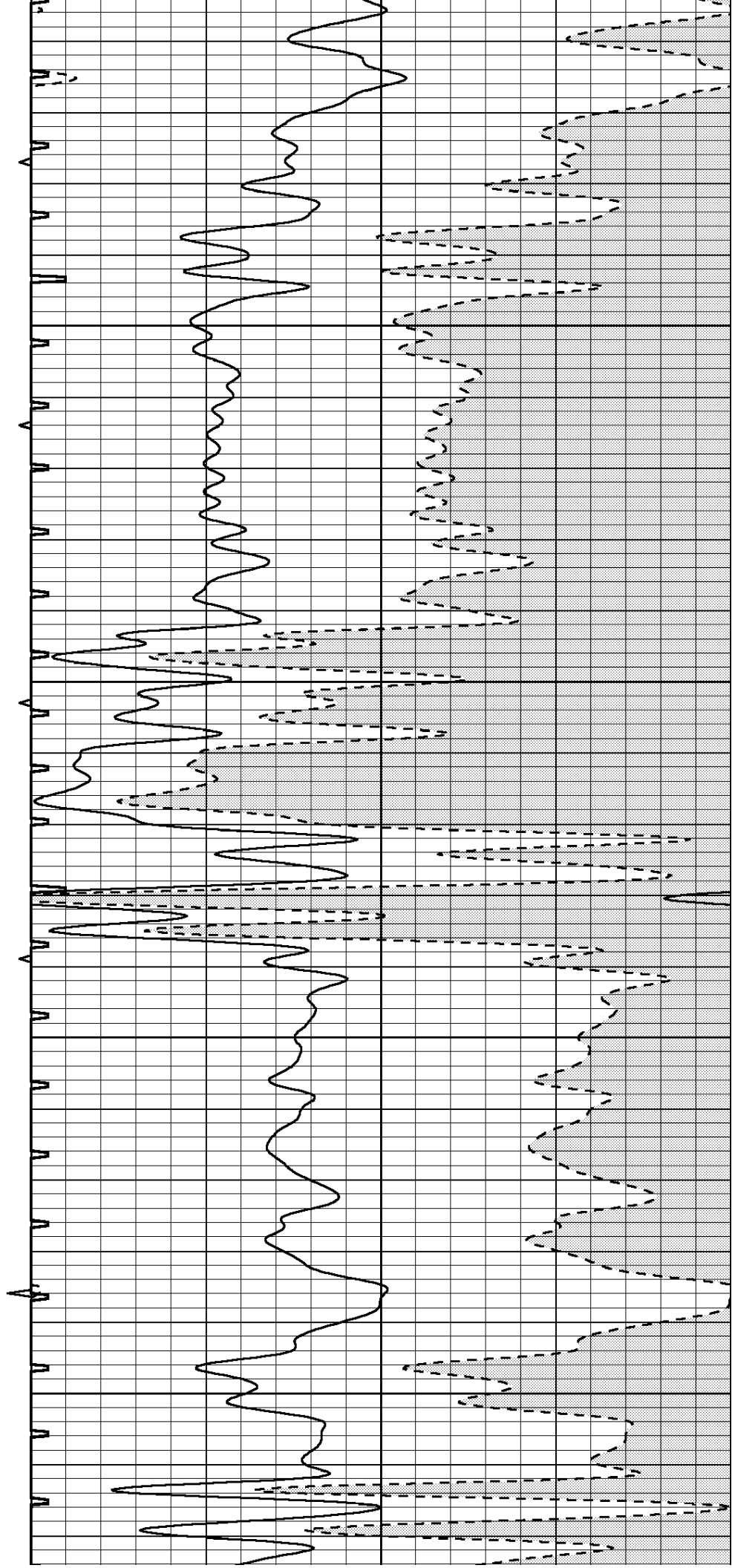


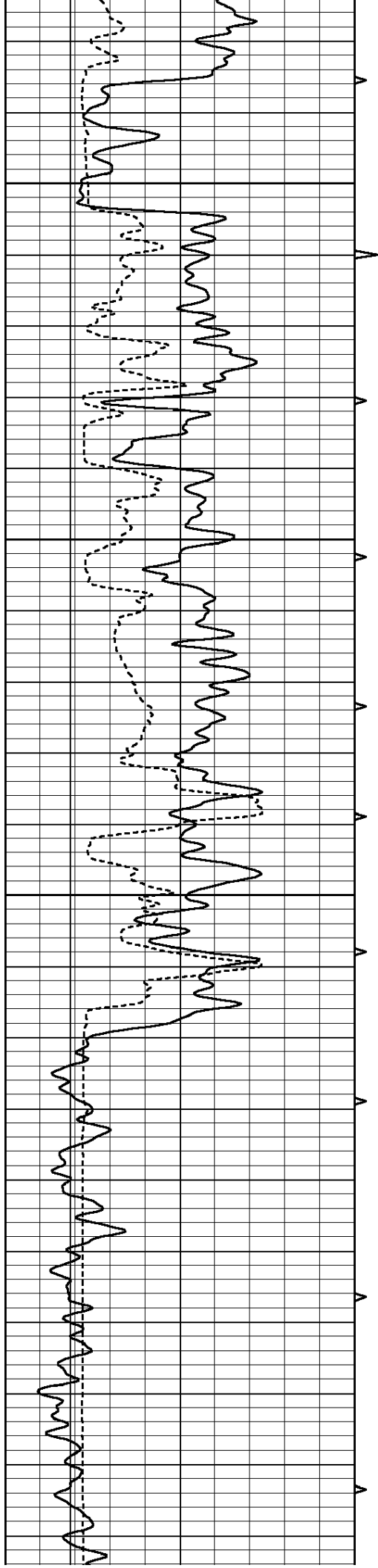
1350

1400

1450

1500



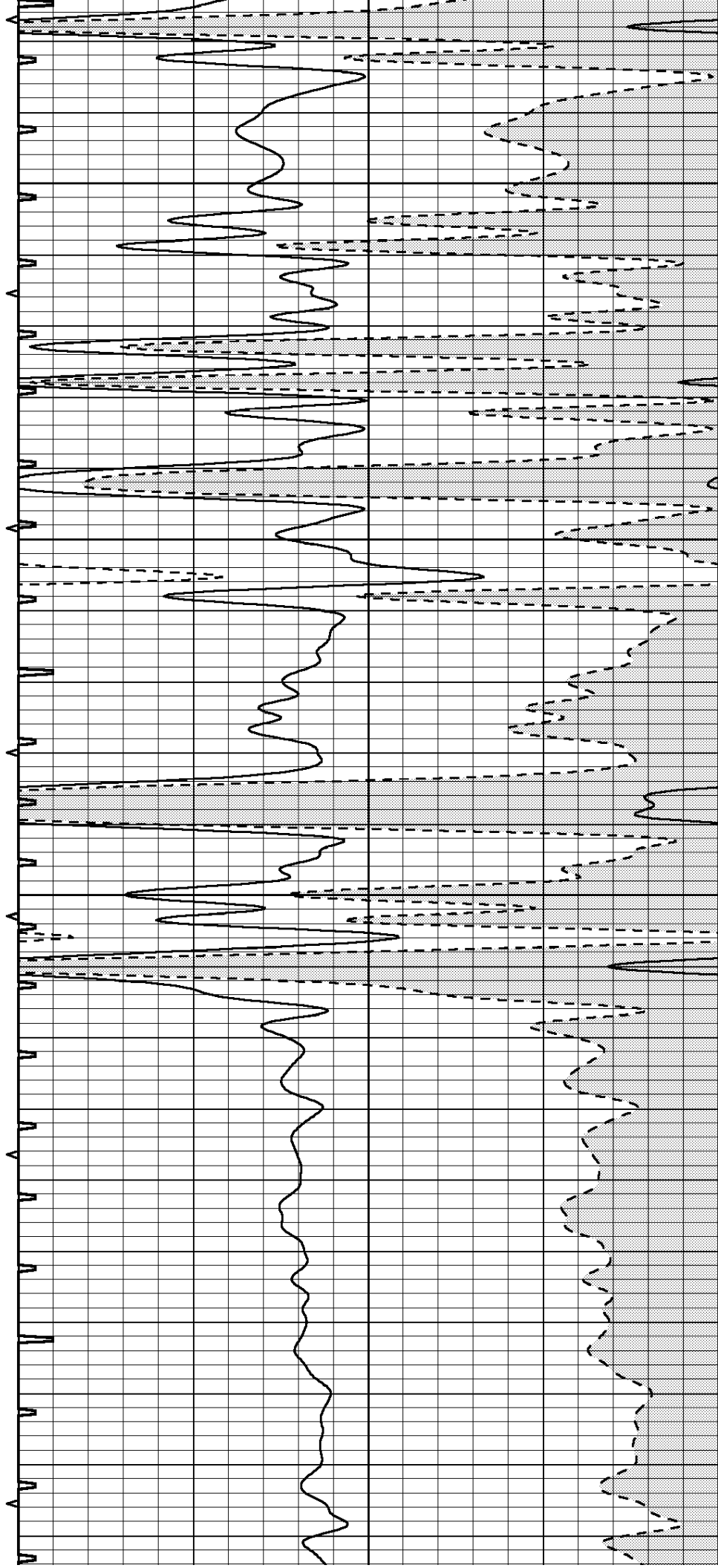


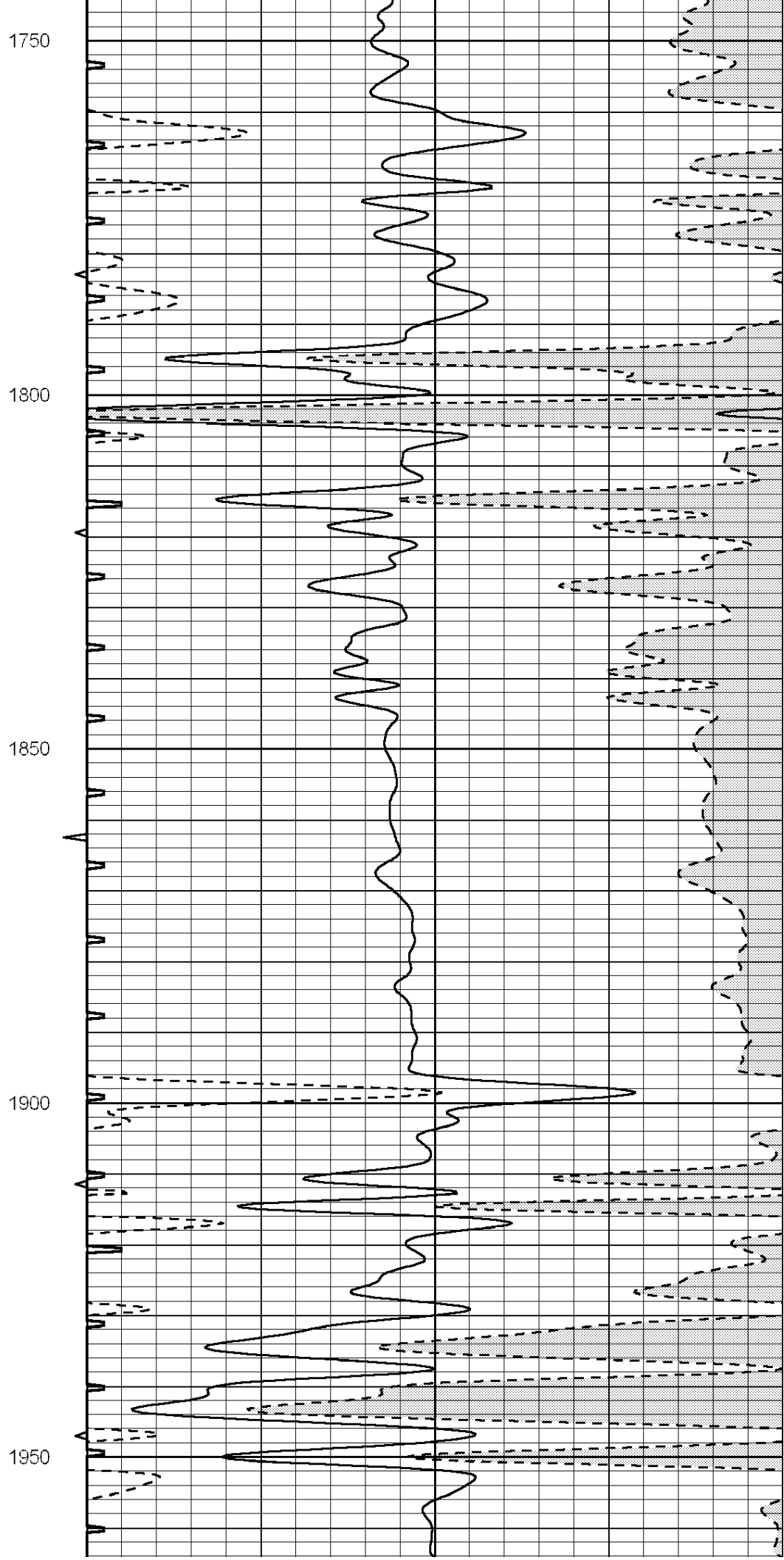
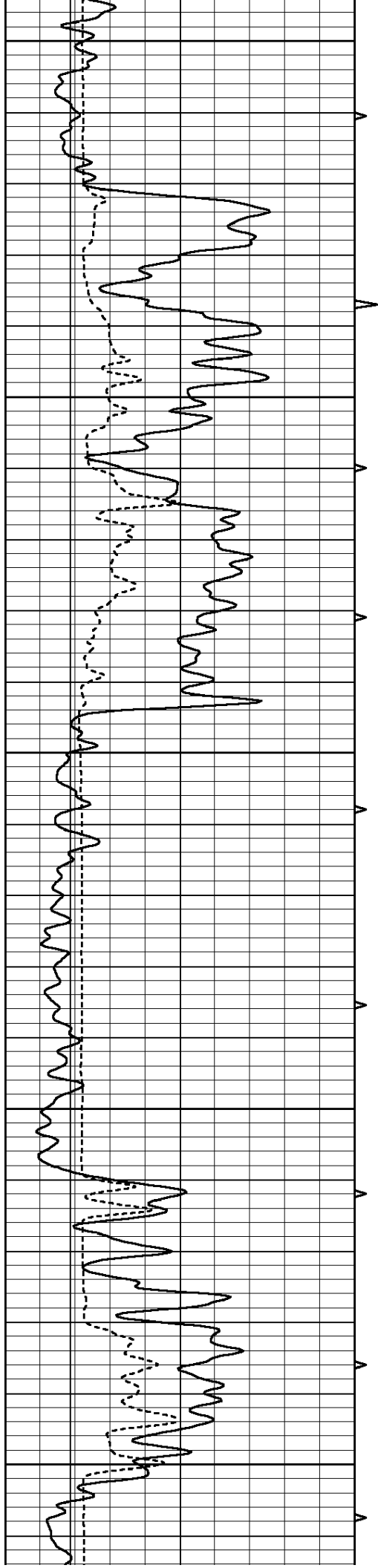
1550

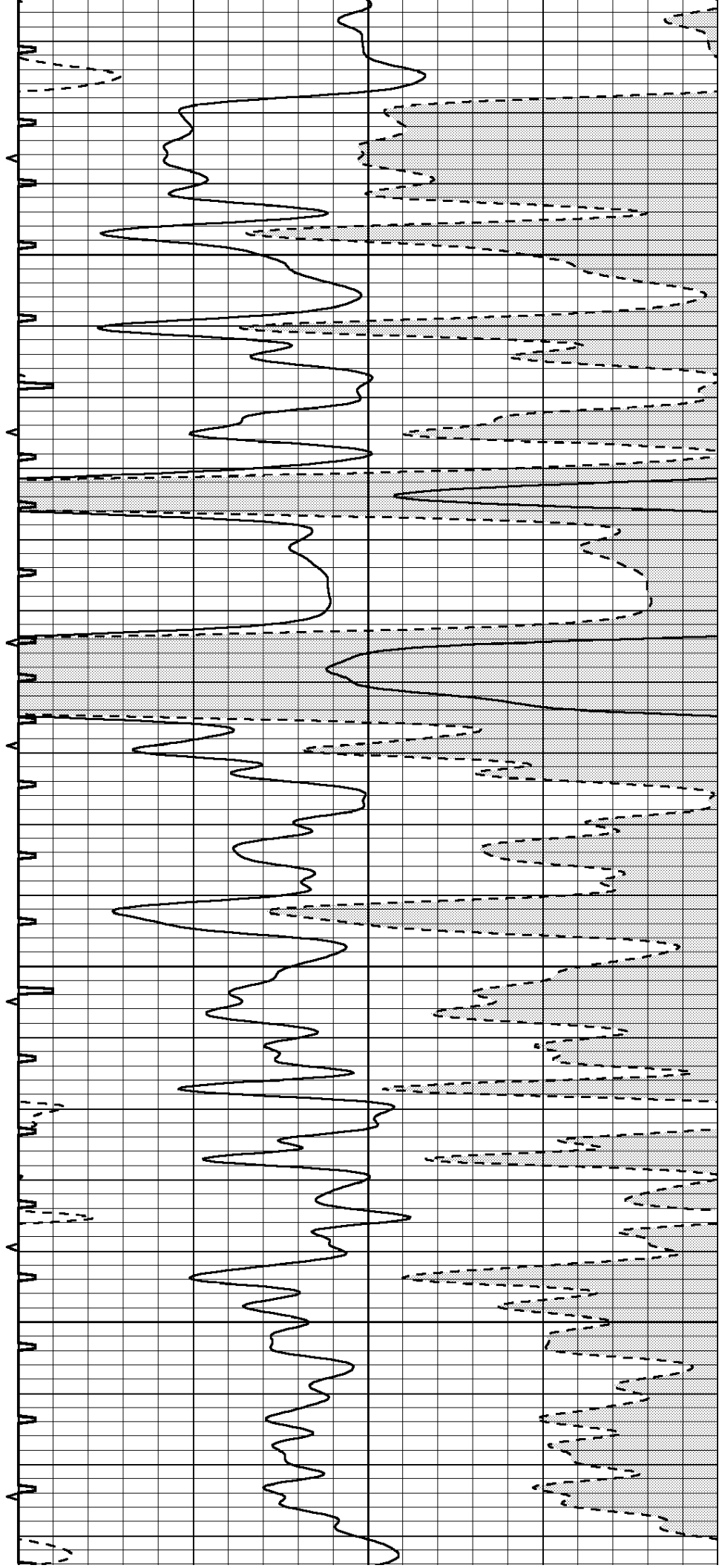
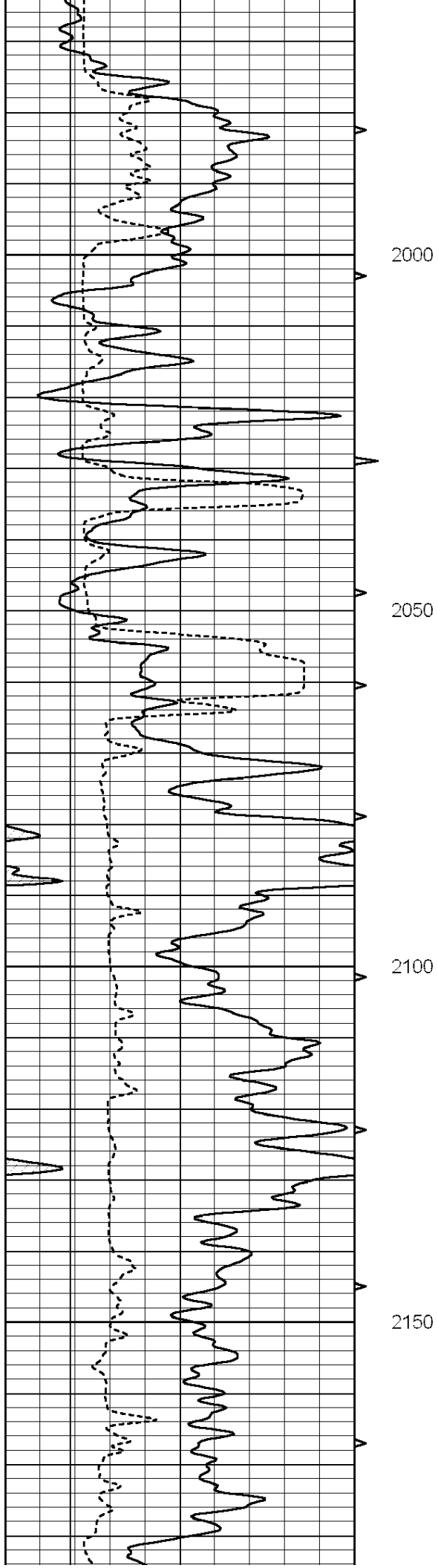
1600

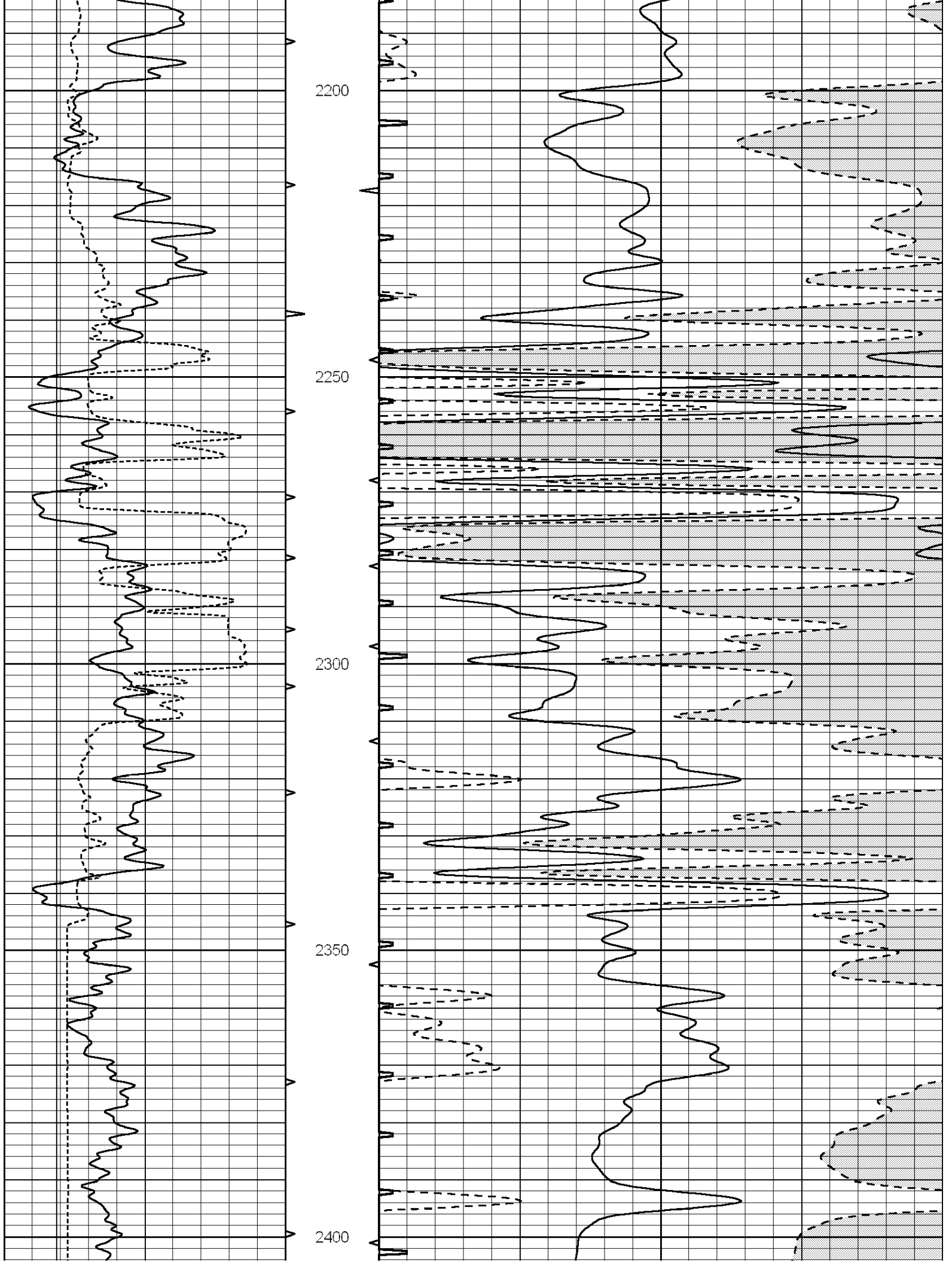
1650

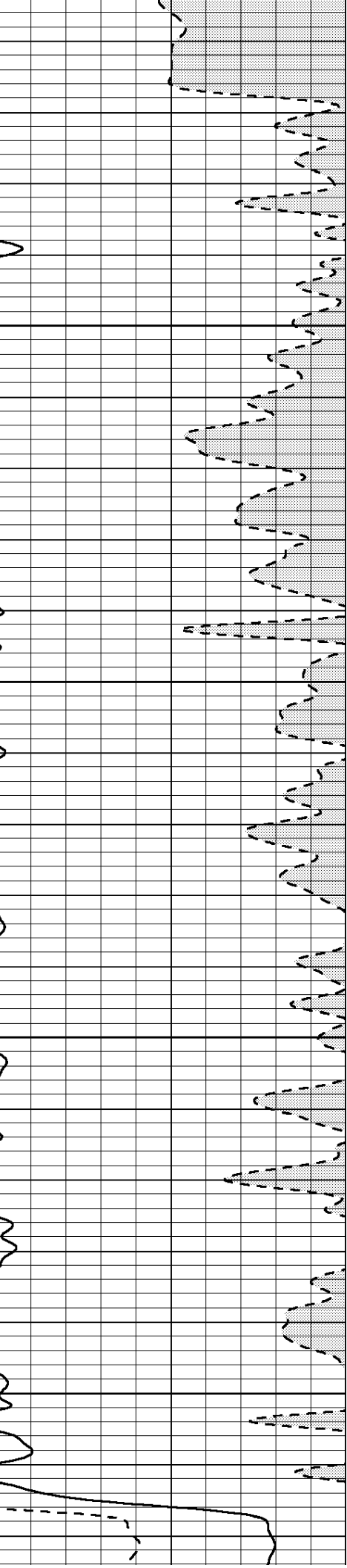
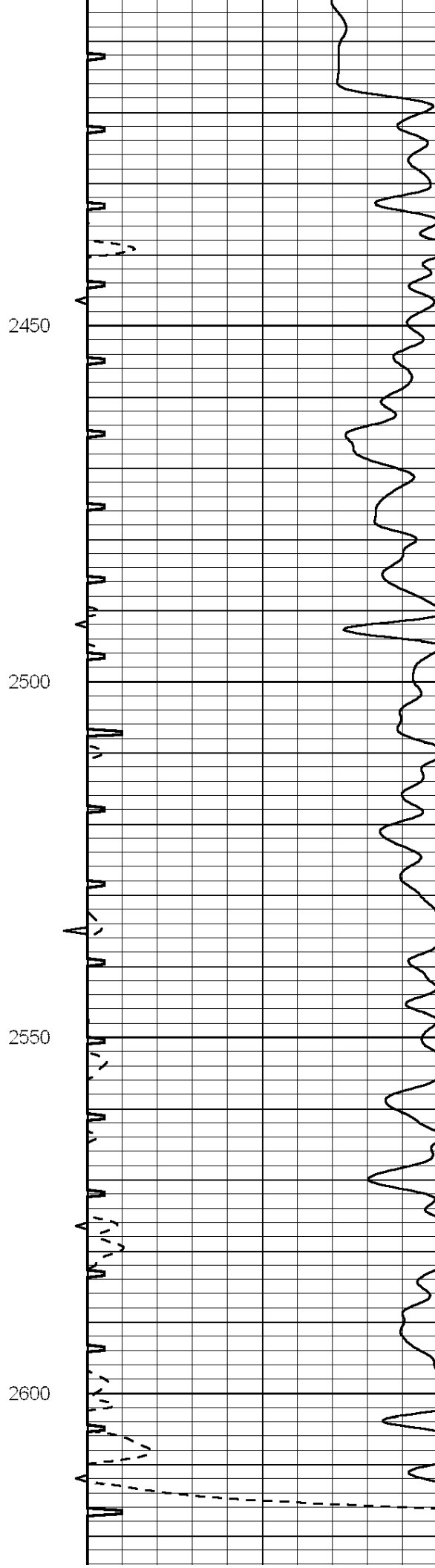
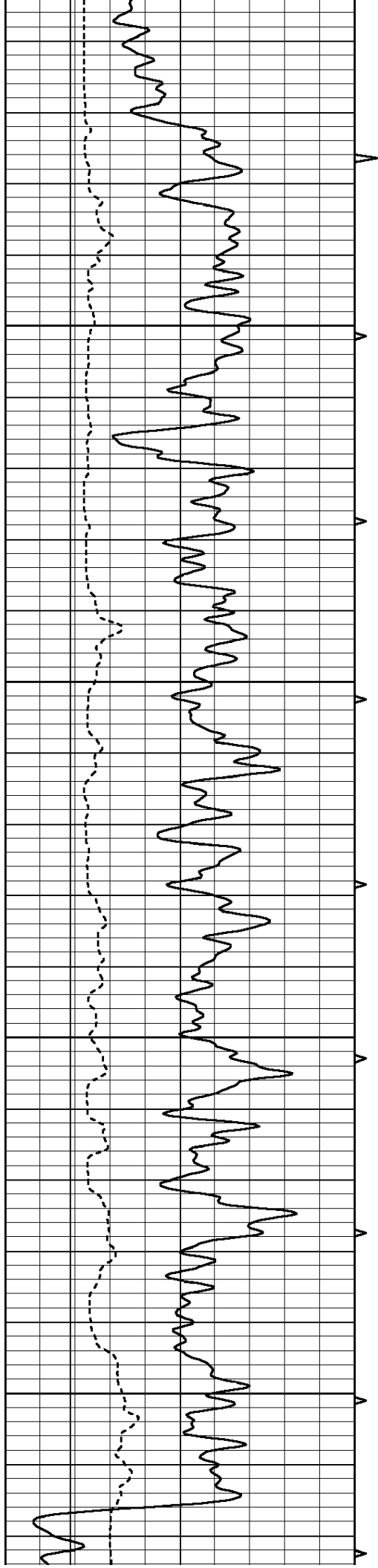
1700

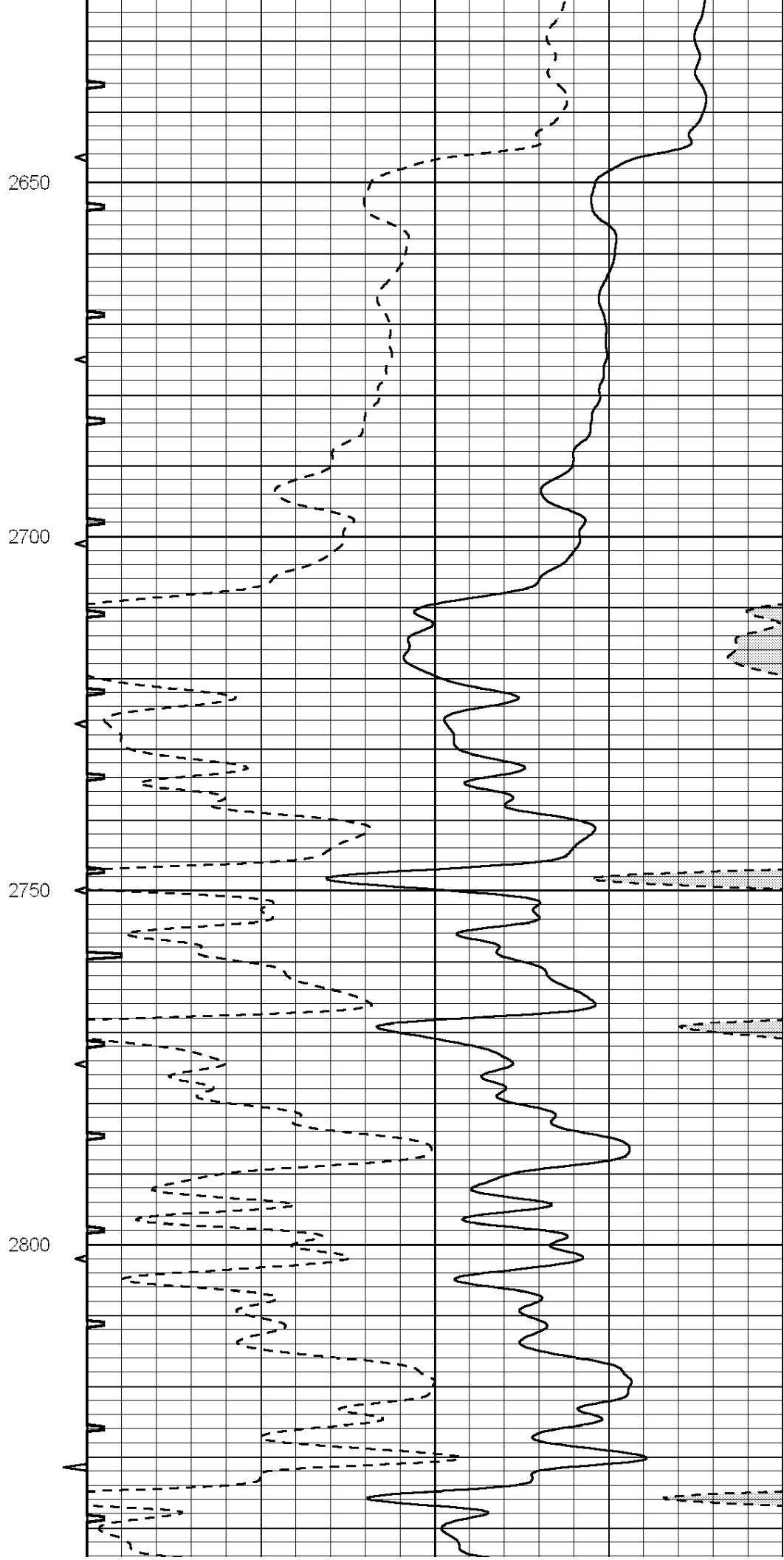
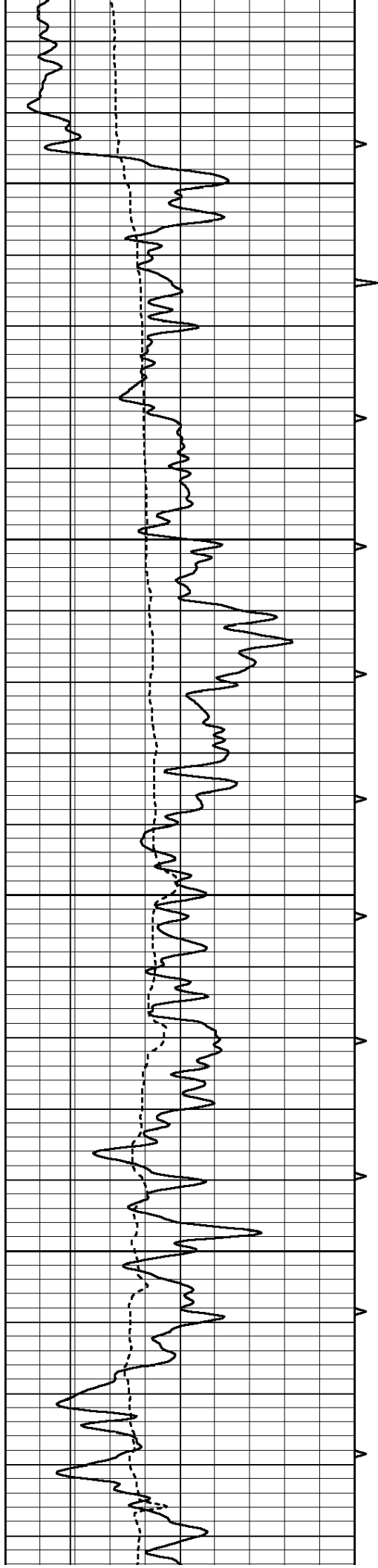


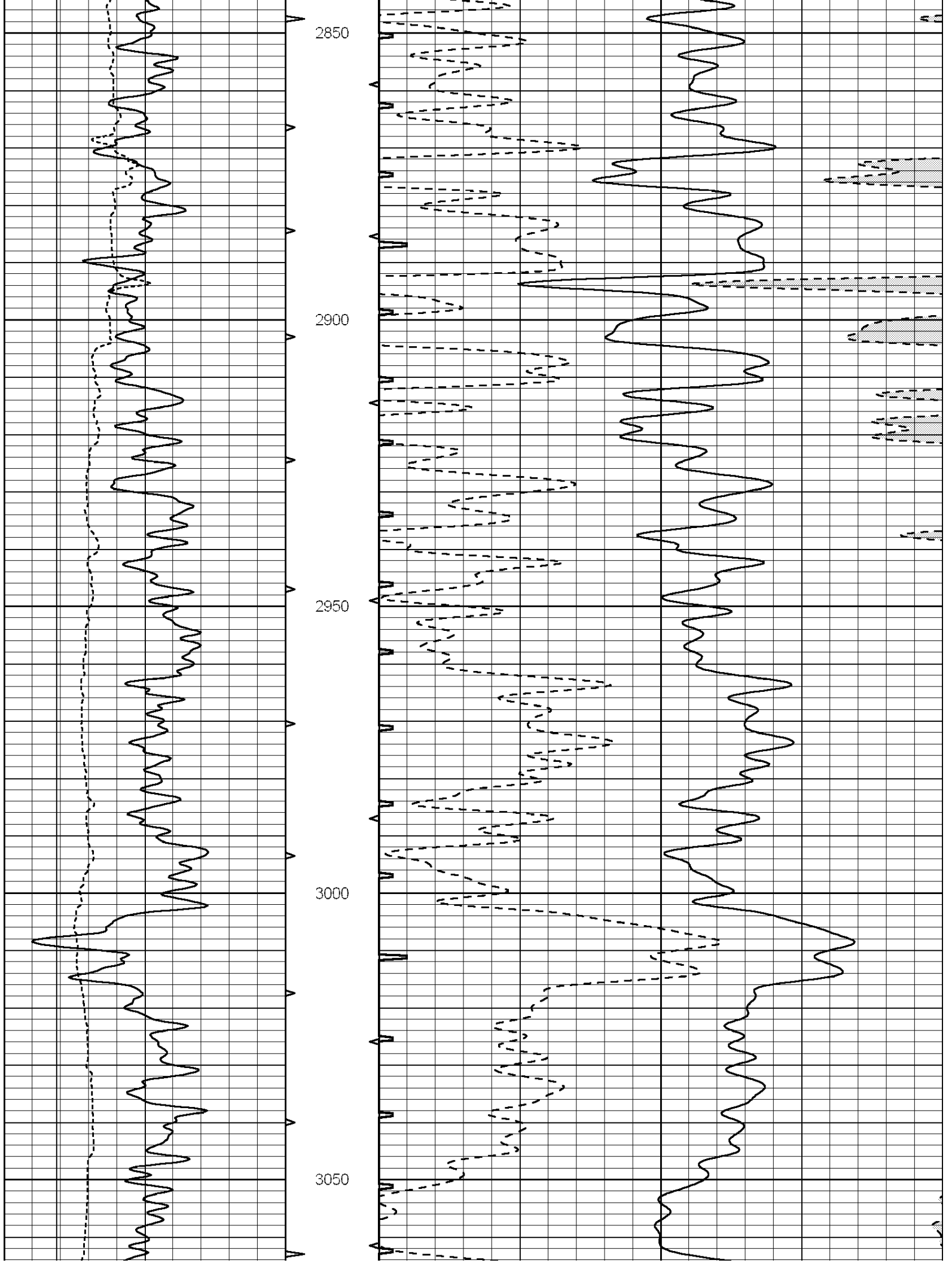


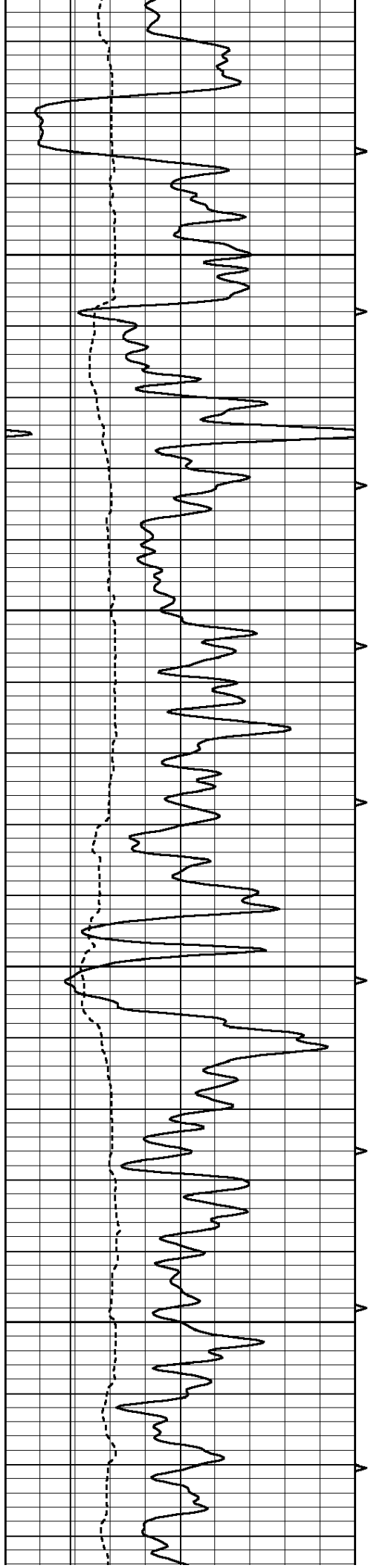










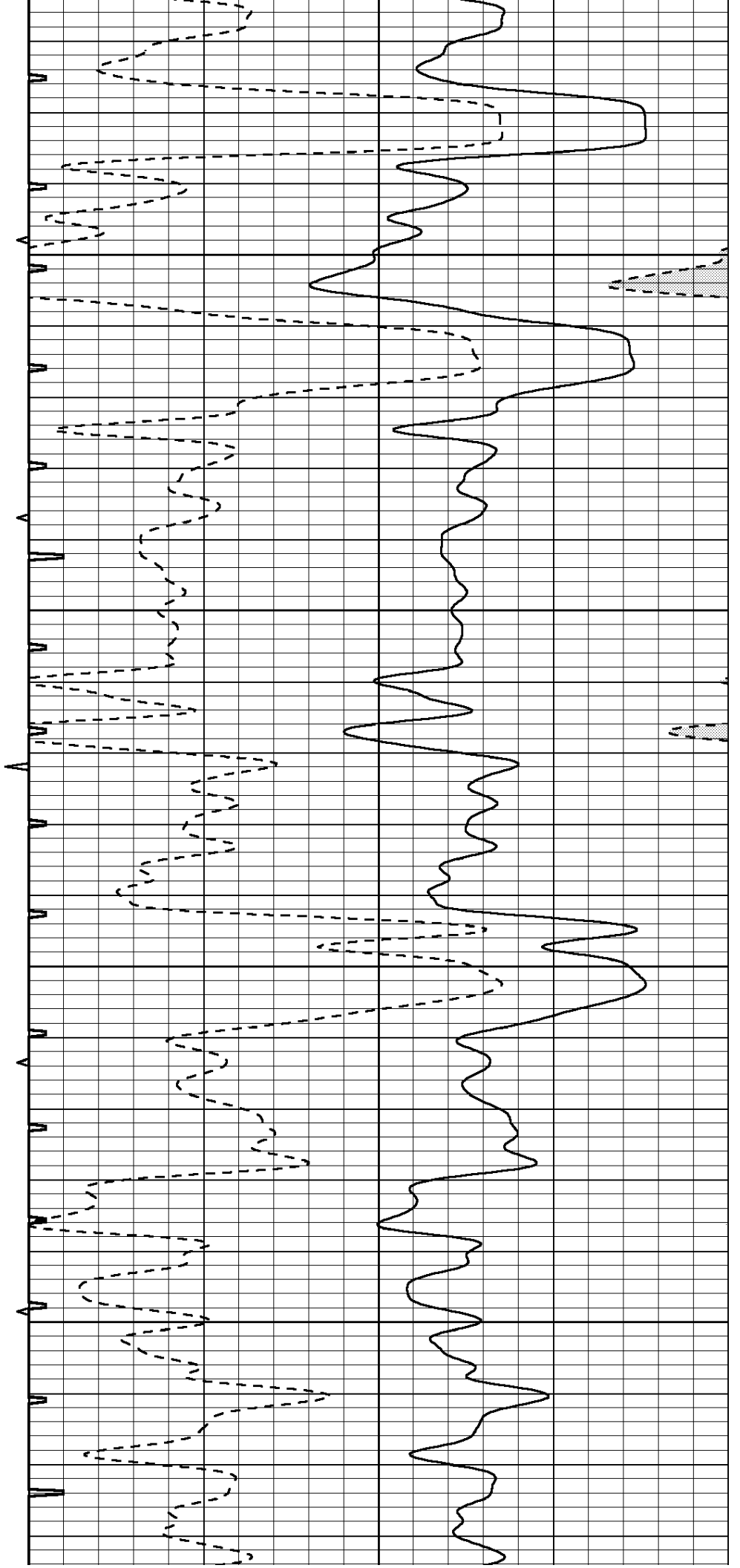


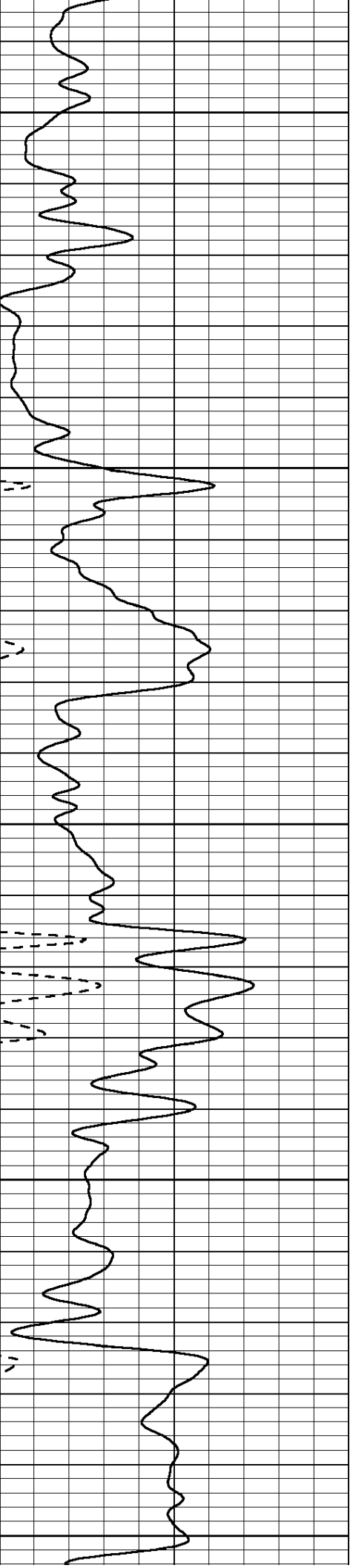
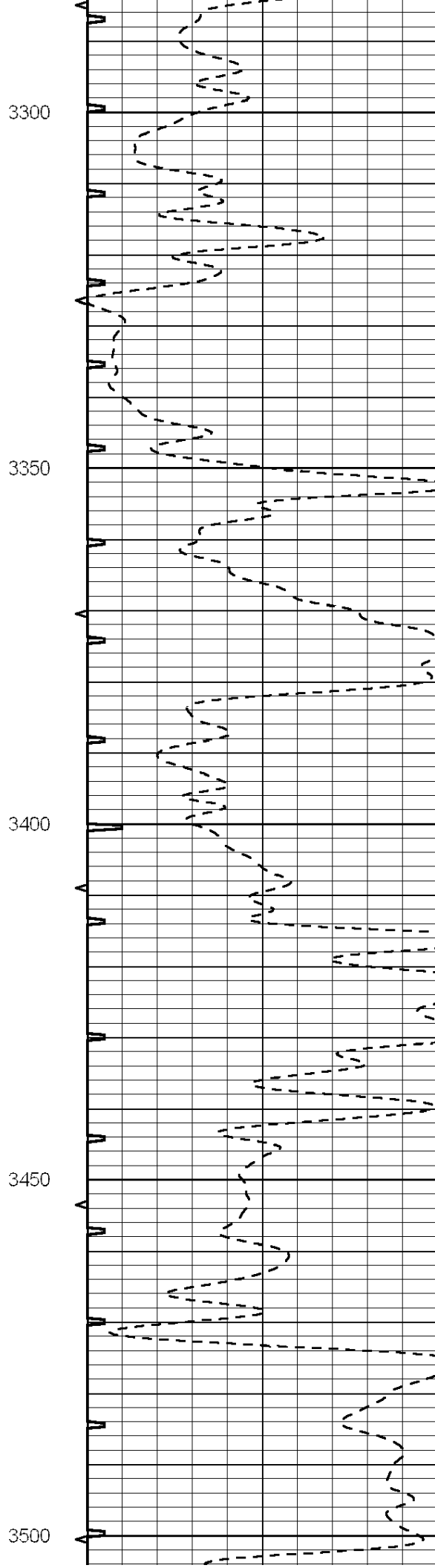
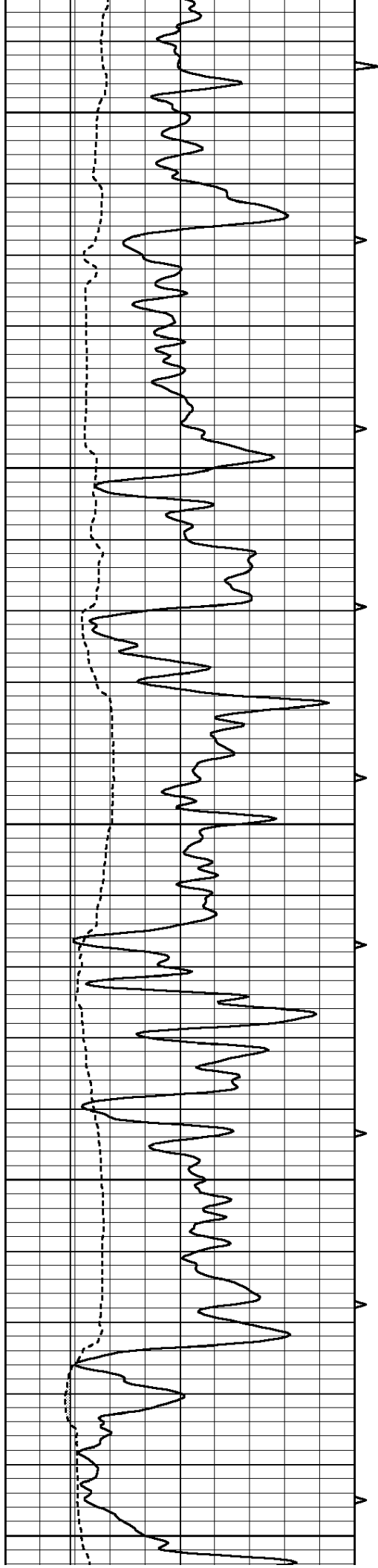
3100

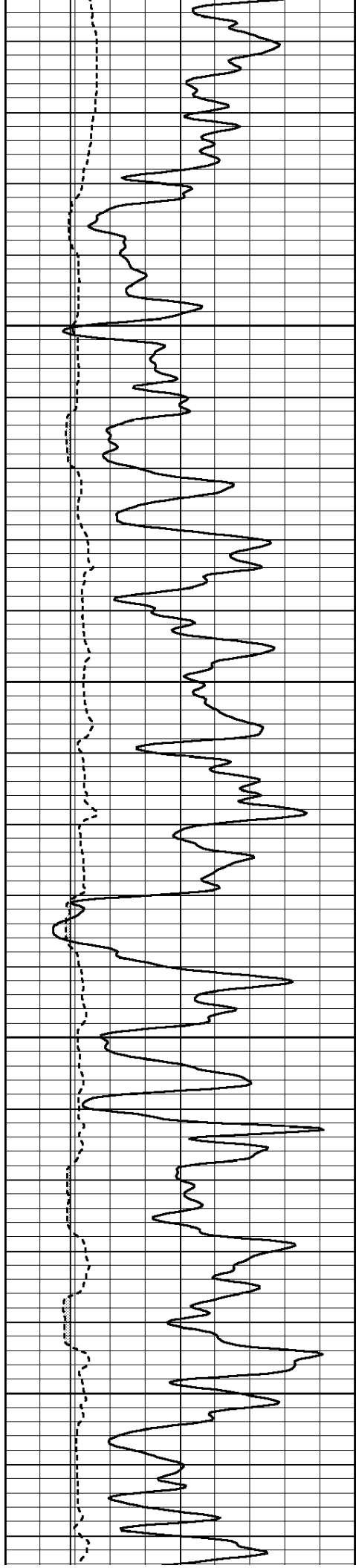
3150

3200

3250





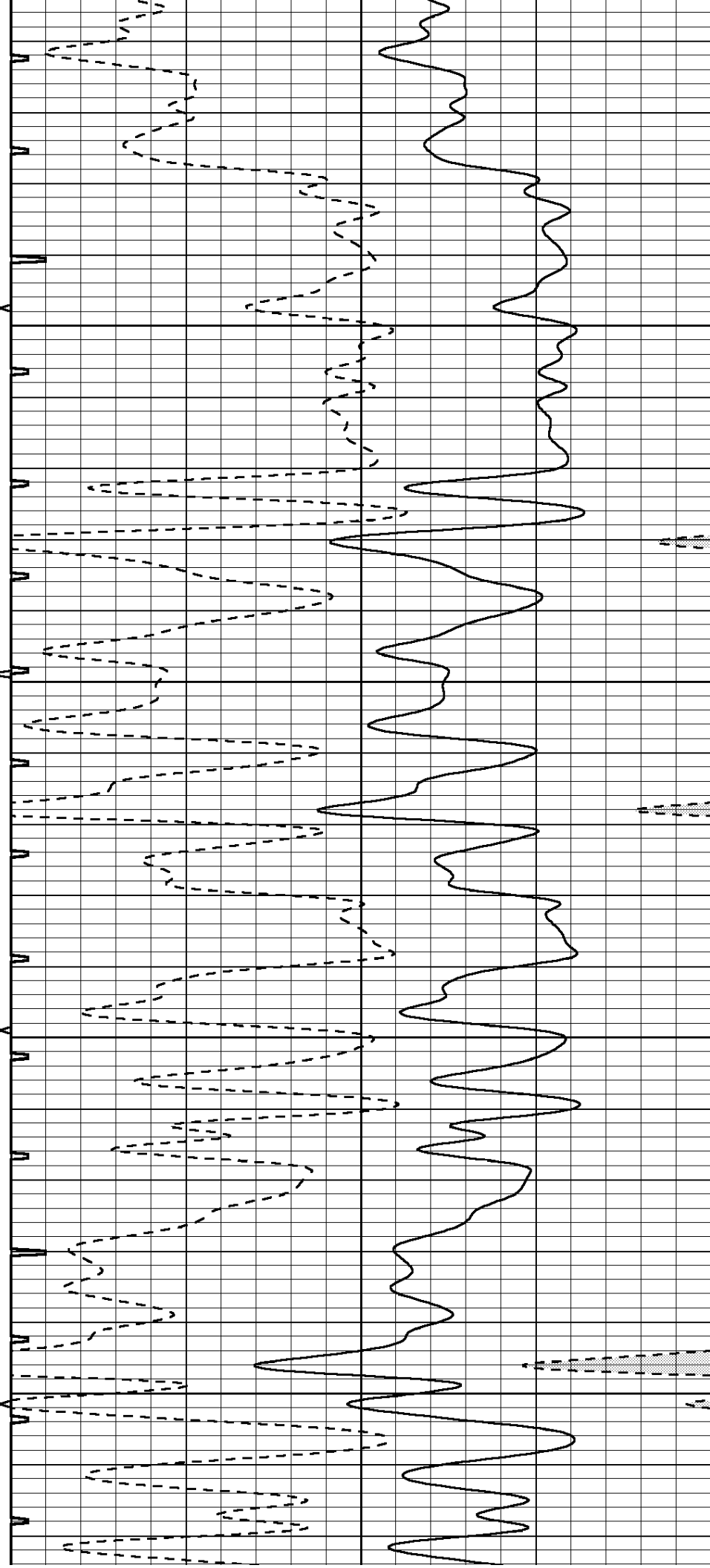


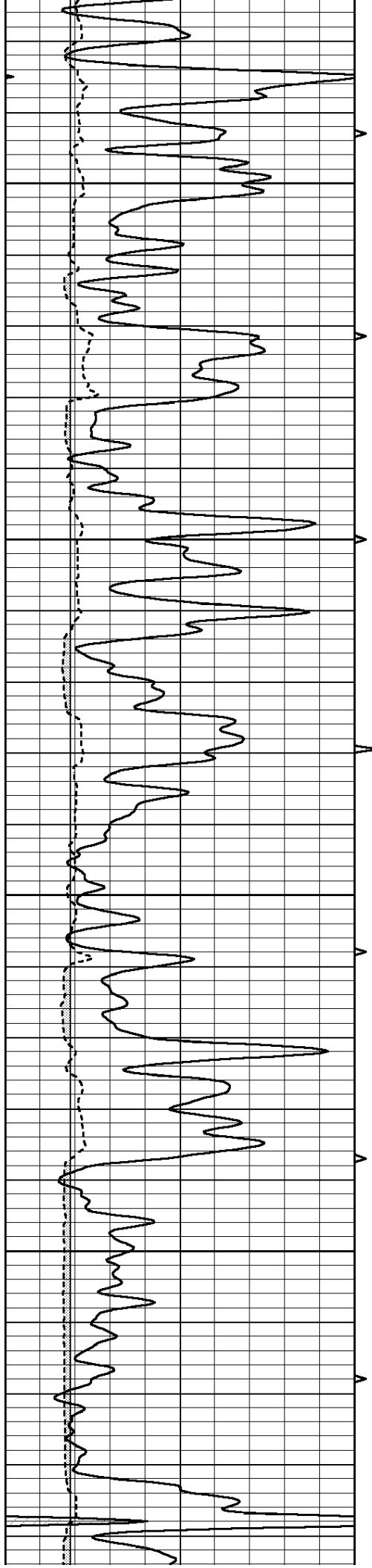
3550

3600

3650

3700



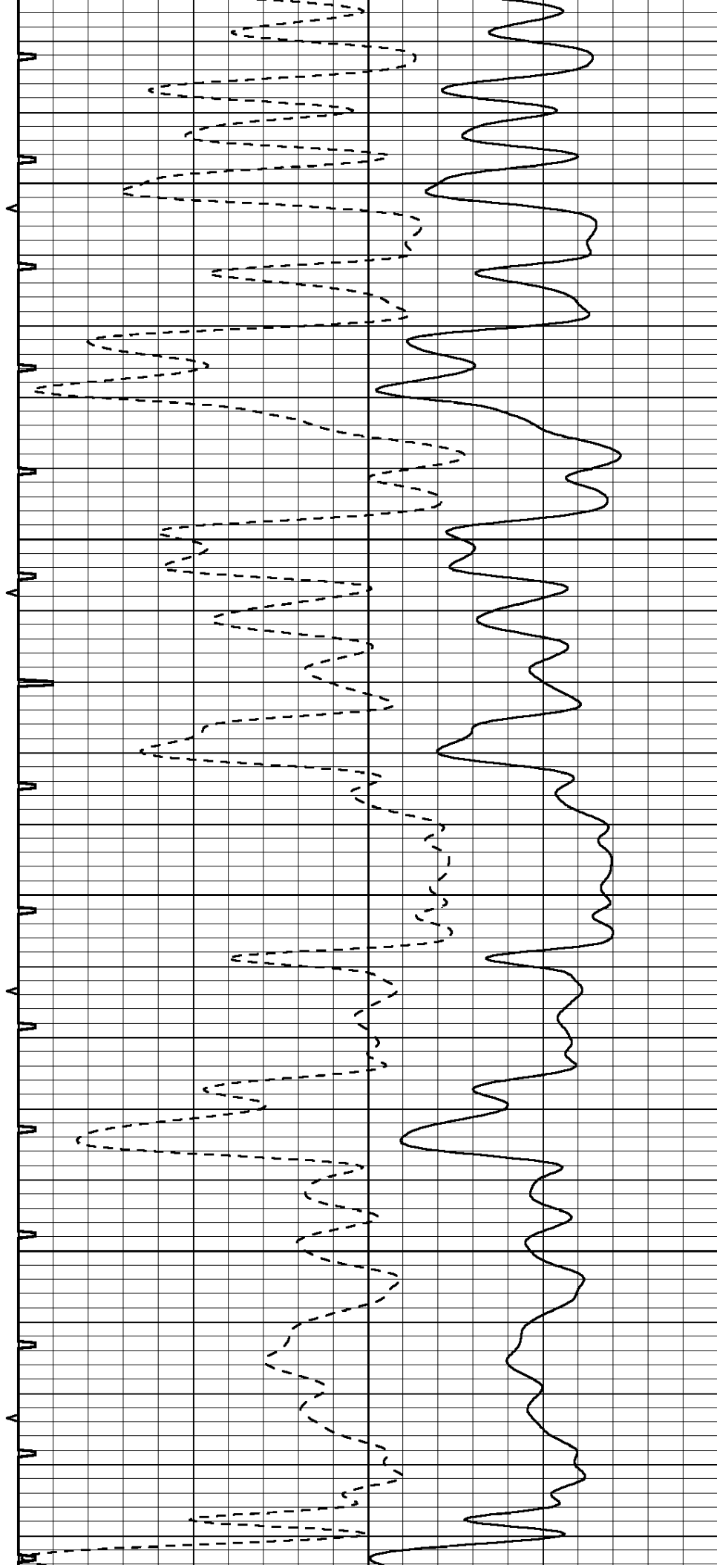


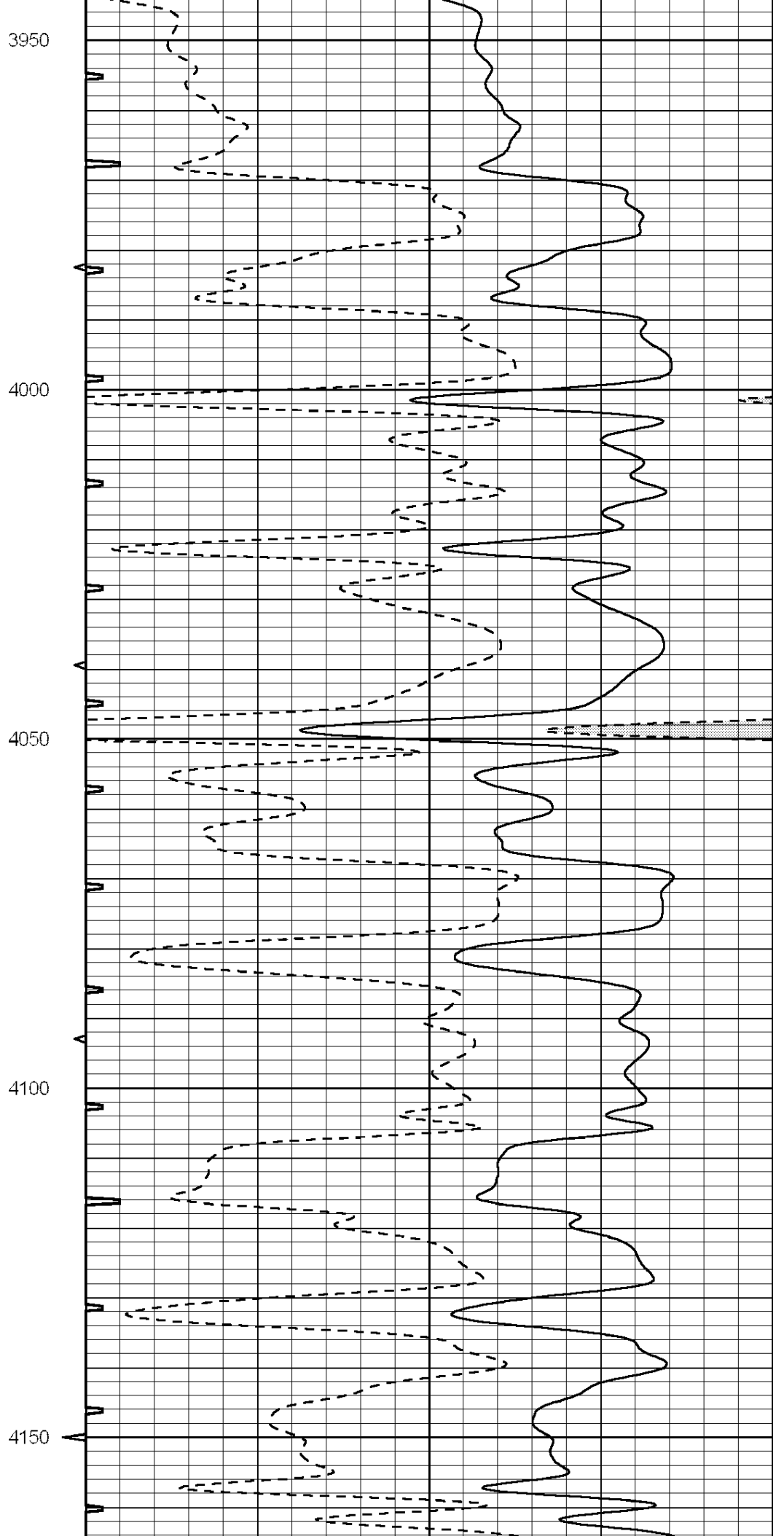
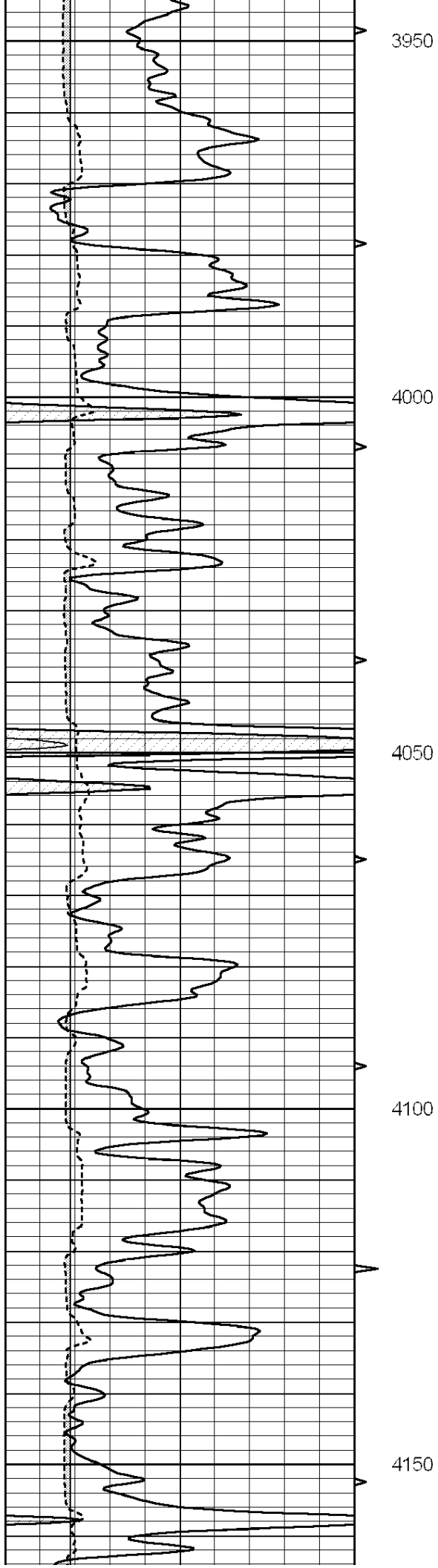
3750

3800

3850

3900





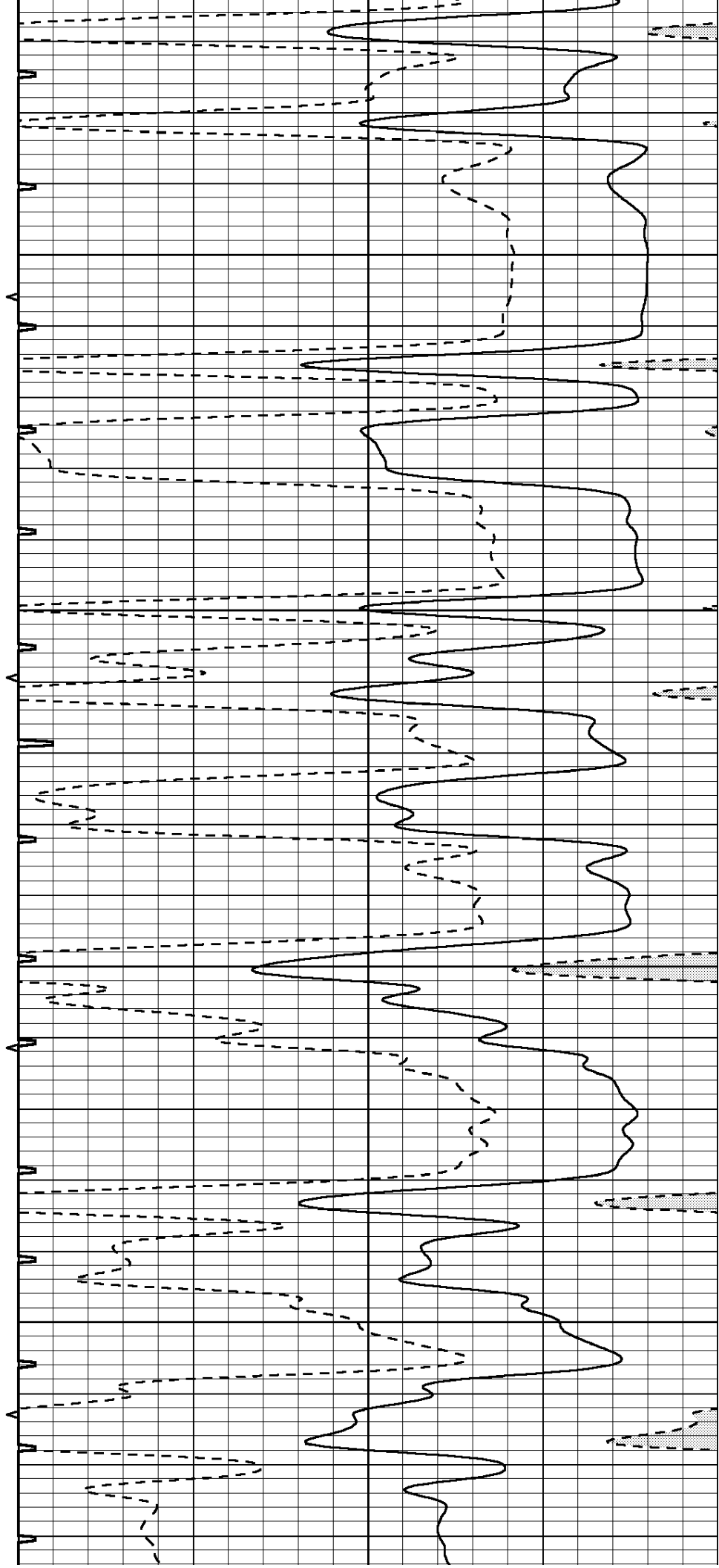


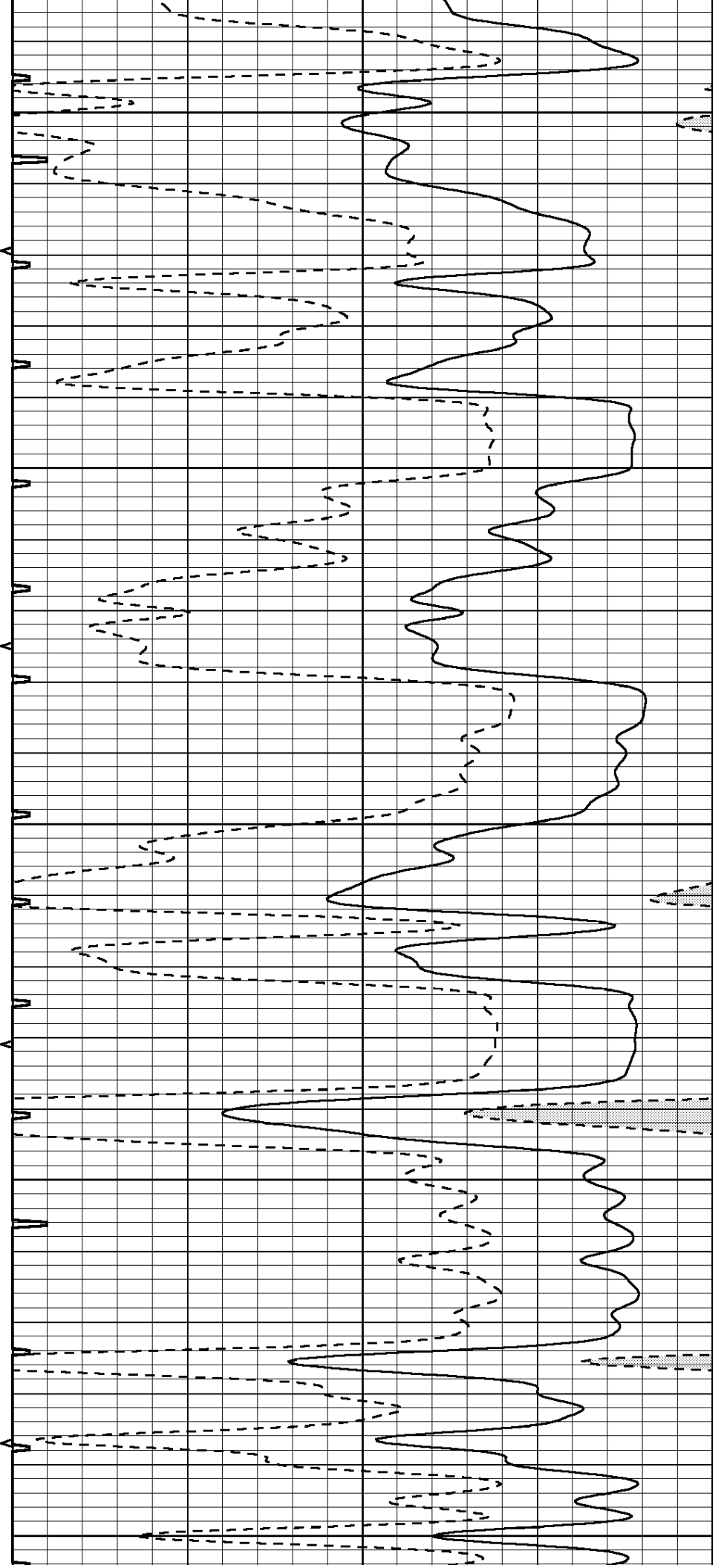
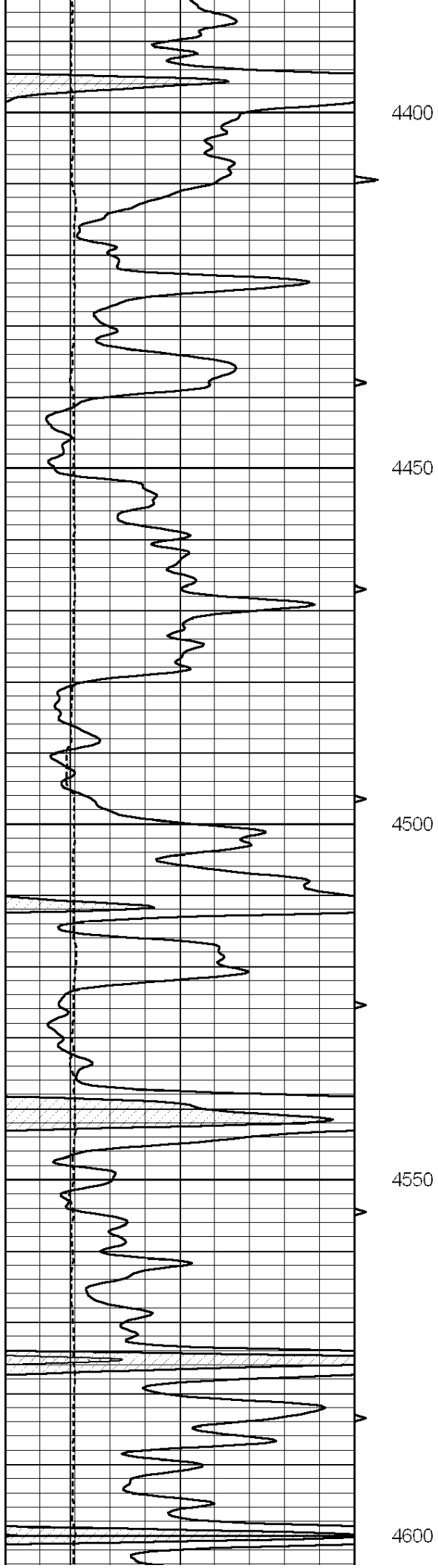
4200

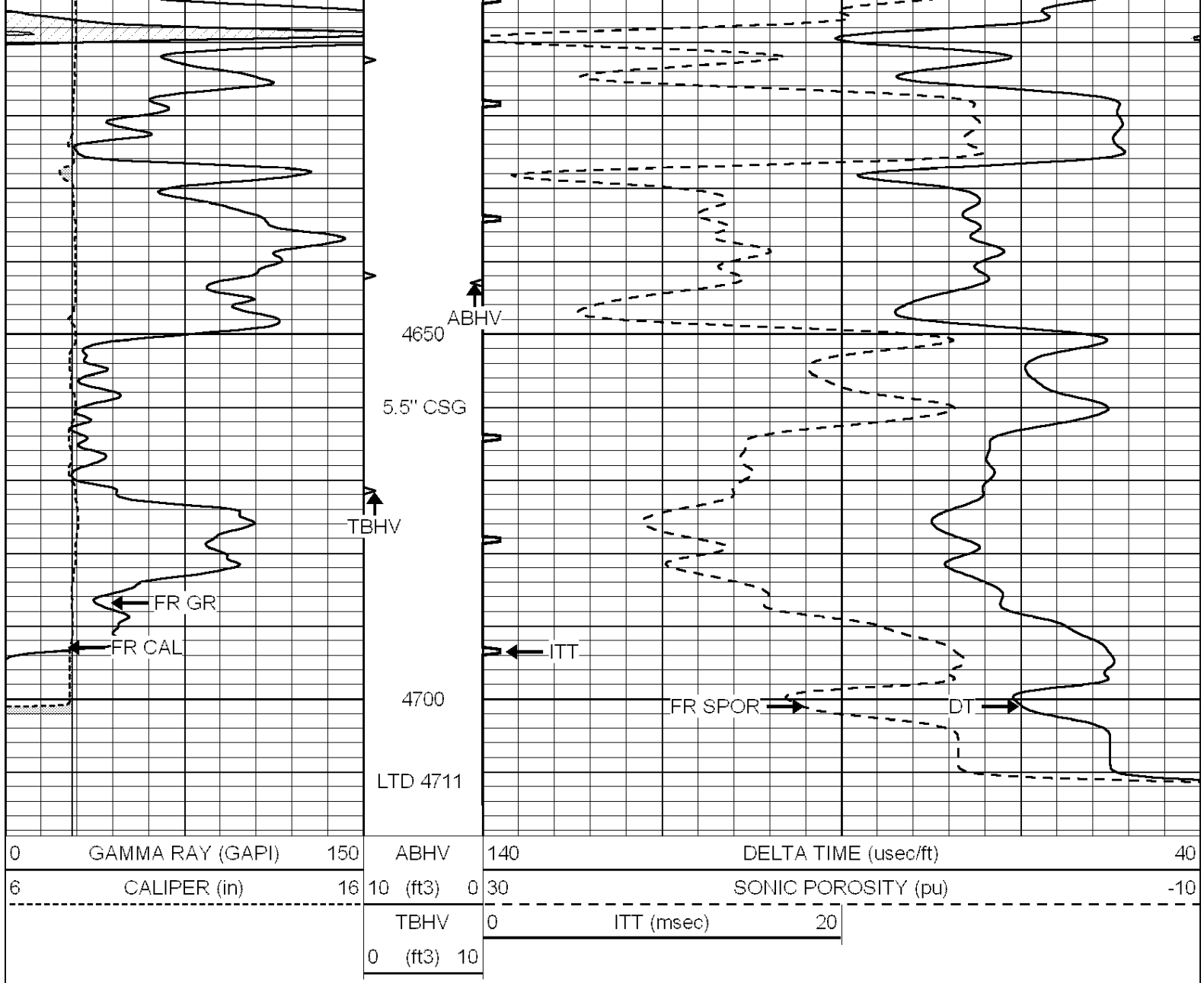
4250

4300

4350



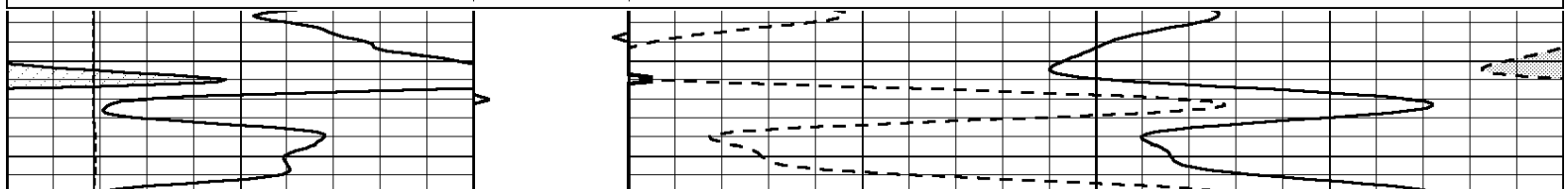
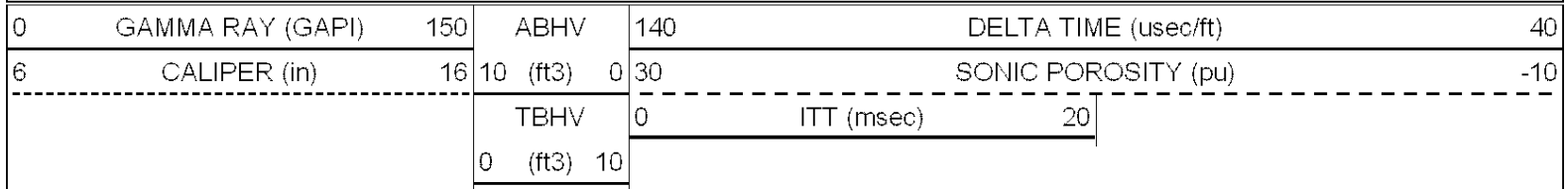


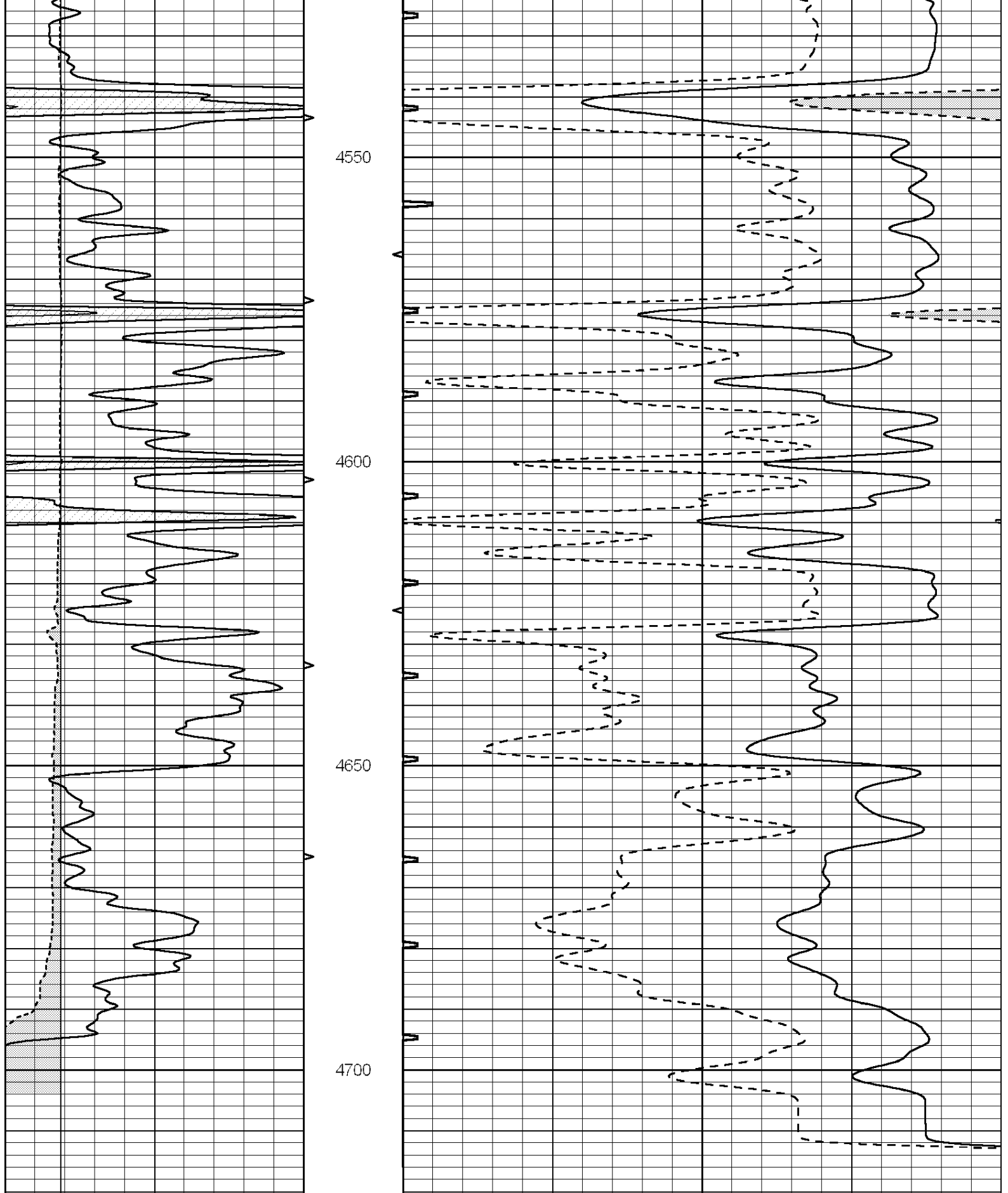


SUPERIOR
Hays,
Kansas

REPEAT SECTION

Database File: 009580ddn.db
 Dataset Pathname: pass5.1
 Presentation Format: _slt
 Dataset Creation: Tue Aug 14 20:21:30 2012 by Calc Open-Cased 090629
 Charted by: Depth in Feet scaled 1:240





0	GAMMA RAY (GAPI)	150	ABHV	140	DELTA TIME (usec/ft)	40	
6	CALIPER (in)	16	10 (ft3)	0	30	SONIC POROSITY (pu)	-10
			TBHV	0	ITT (msec)	20	
			0 (ft3)	10			