



Dual Induction Log

DIGITAL LOG (785) 625-3858

15-137-20,584-00-00

API No.	Company Klabzuba Oil & Gas, Inc.	
	Well Brooks No. 34-11-3-25	
	Field	
	County Norton	State Kansas
	Location 1520' FSL & 1550' FWL	
	Sec: 34	Twp: 3 S Rge: 25 W
Permanent Datum	Ground Level	Elevation 2450
Log Measured From	Kelly Bushing	7 Ft. Above Perm. Datum
Drilling Measured From	Kelly Bushing	
		Other Services CNL/CDL MEL/BHCS
		Elevation K.B. 2457 D.F. G.L. 2450

Date	1/12/2012
Run Number	One
Depth Driller	4000
Depth Logger	4001
Bottom Logged Interval	4000
Top Log Interval	250
Casing Driller	8.625 @ 264
Casing Logger	264
Bit Size	7.875
Type Fluid in Hole	Chemical
Salinity, ppm CL	1,500
Density / Viscosity	9.3 53
pH / Fluid Loss	10.0 7.6
Source of Sample	Flowline
Rm @ Meas. Temp	1.25 @ 50
Rmf @ Meas. Temp	.94 @ 50
Rmc @ Meas. Temp	1.69 @ 50
Source of Rmf / Rmc	Charts
Rm @ BHT	.53 @ 118
Operating Rig Time	5 Hours
Max Rec. Temp. F	118
Equipment Number	91
Location	Hays
Recorded By	K. Bange
Witnessed By	Richard Bell

<<< Fold Here >>>

All interpretations are opinions based on inferences from electrical or other measurements and we cannot and do not guarantee the accuracy or correctness of any interpretation, and we shall not, except in the case of gross or willful negligence on our part, be liable or responsible for any loss, costs, damages, or expenses incurred or sustained by anyone resulting from any interpretation made by any of our officers, agents or employees. These interpretations are also subject to our general terms and conditions set out in our current Price Schedule.

Comments

Thank you for using Log-Tech, Inc.
(785) 625-3858

New Almelo KS, 1 W to Clayton rd, N to correction curve,
1 W to W14 rd, 4 N to S rd, 1 1/4 E, N into

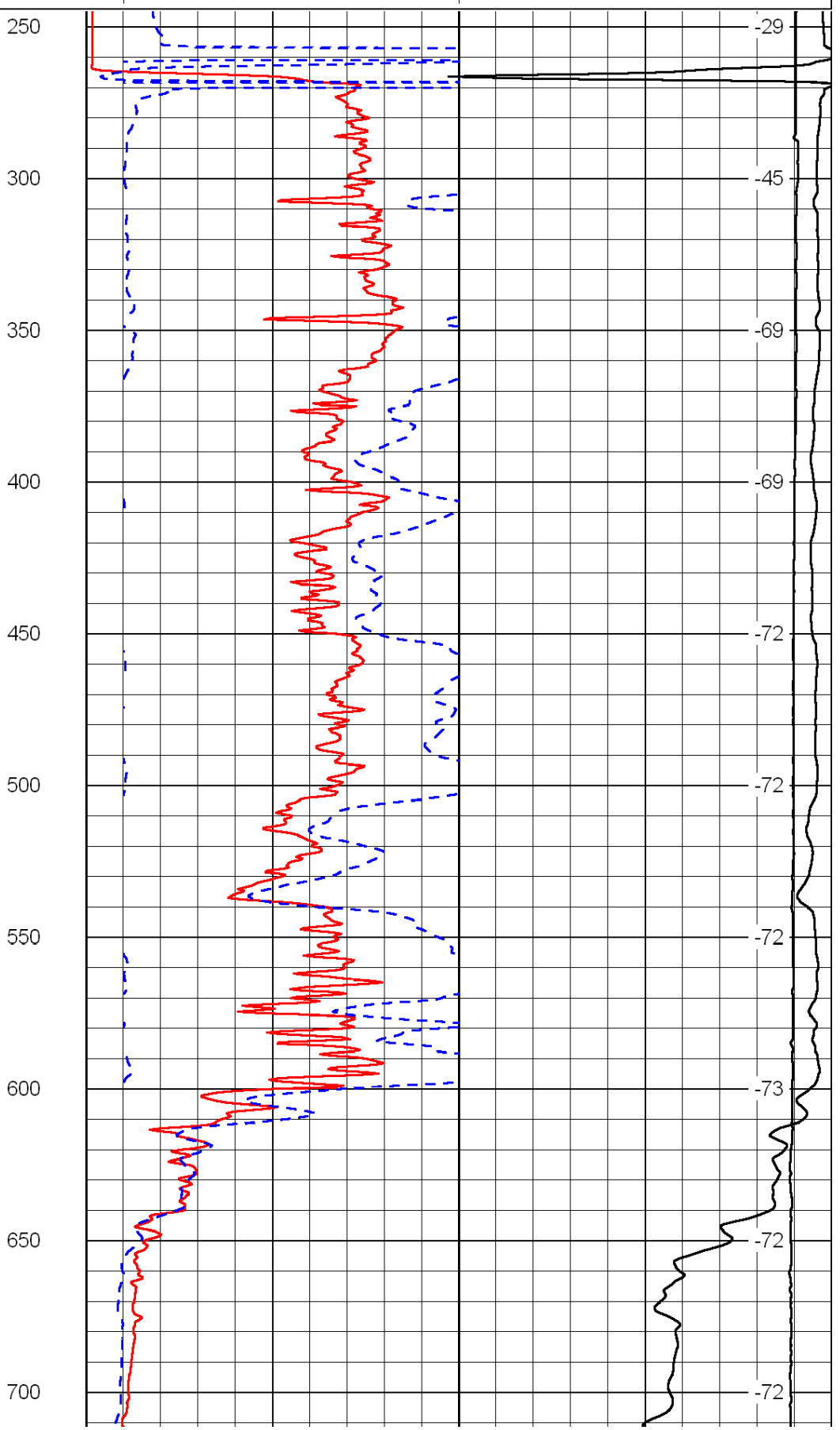
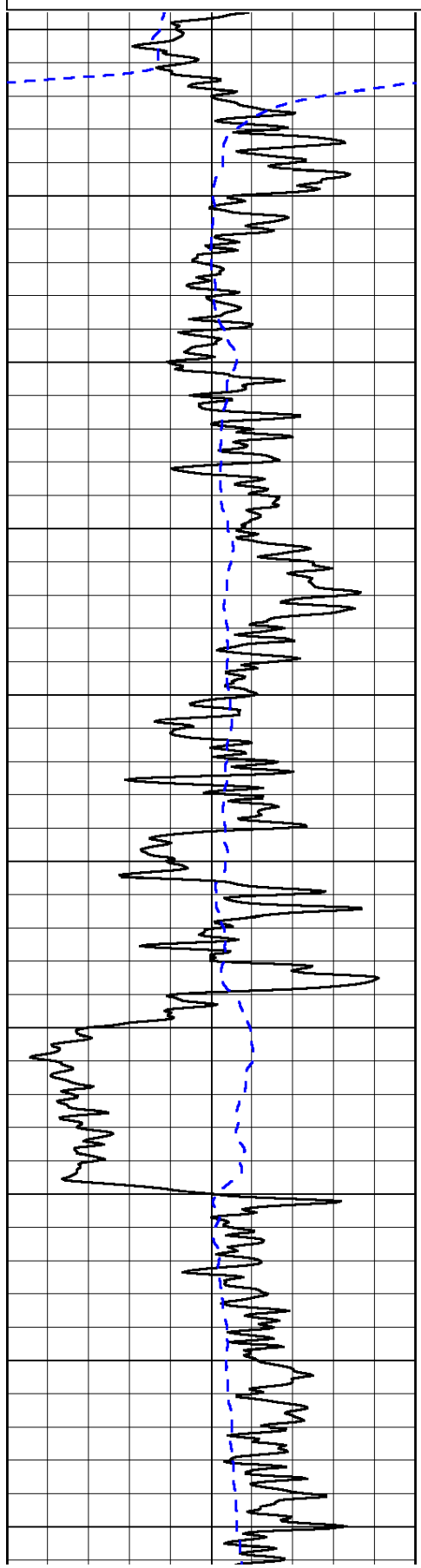
0	Gamma Ray	150
-200	SP (mV)	0

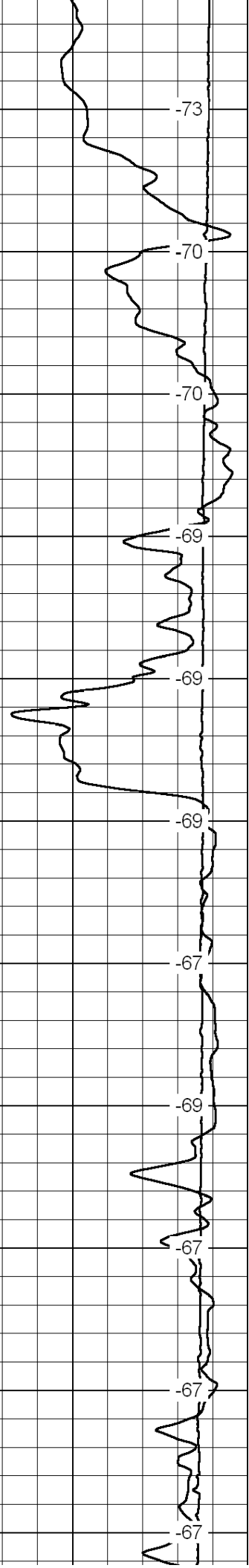
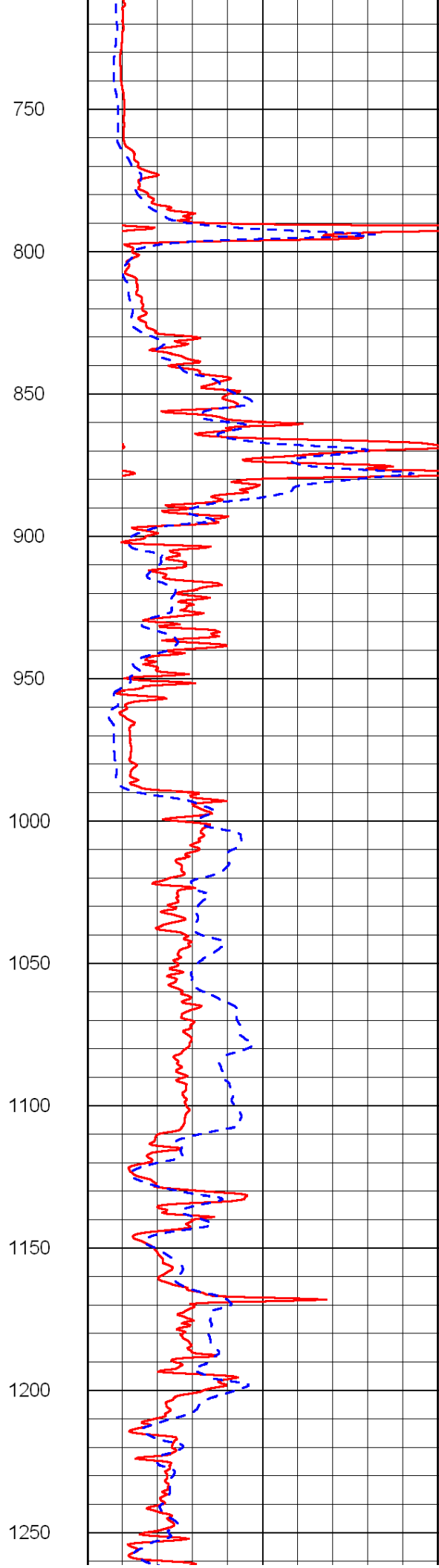
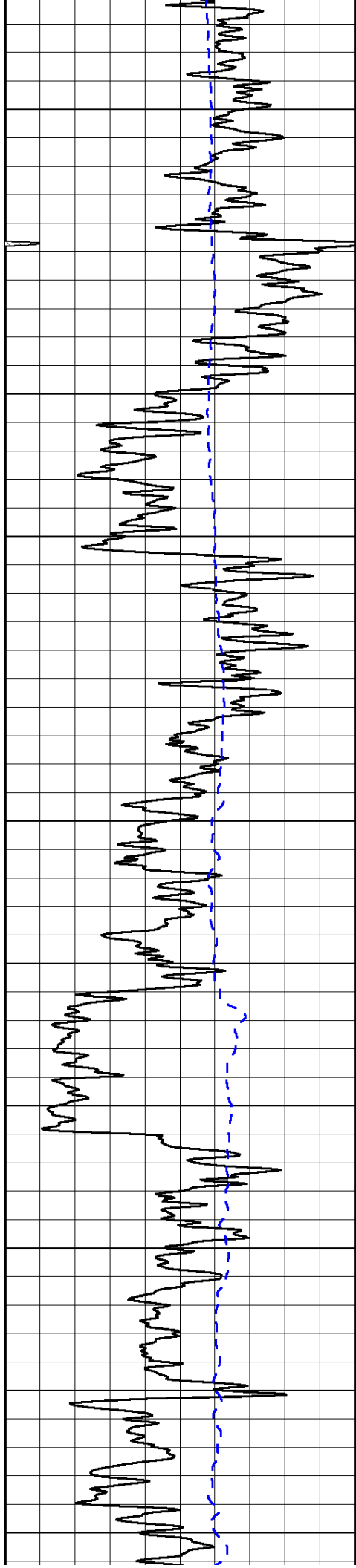
0	Shallow Resistivity	50
0	Deep Resistivity	50

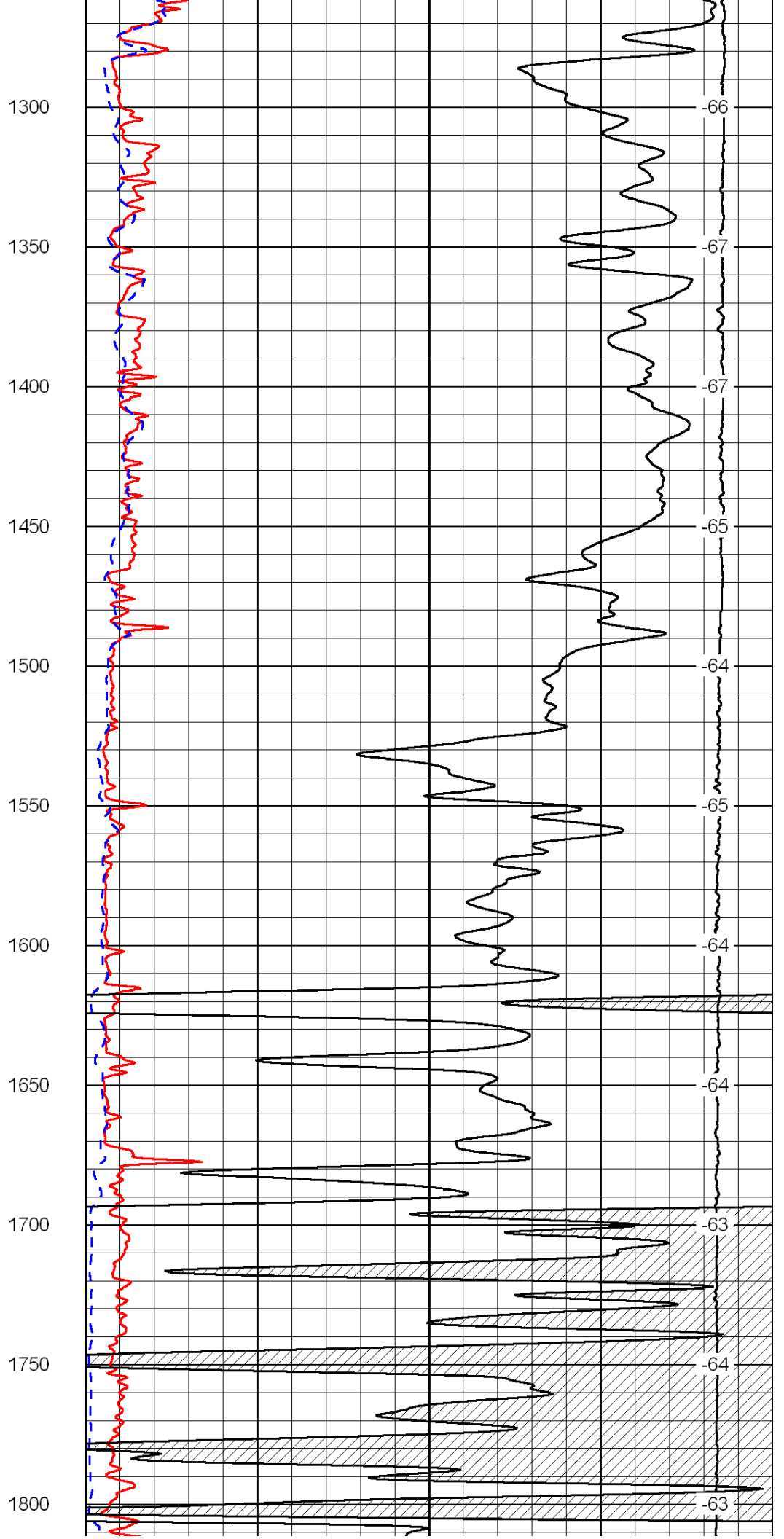
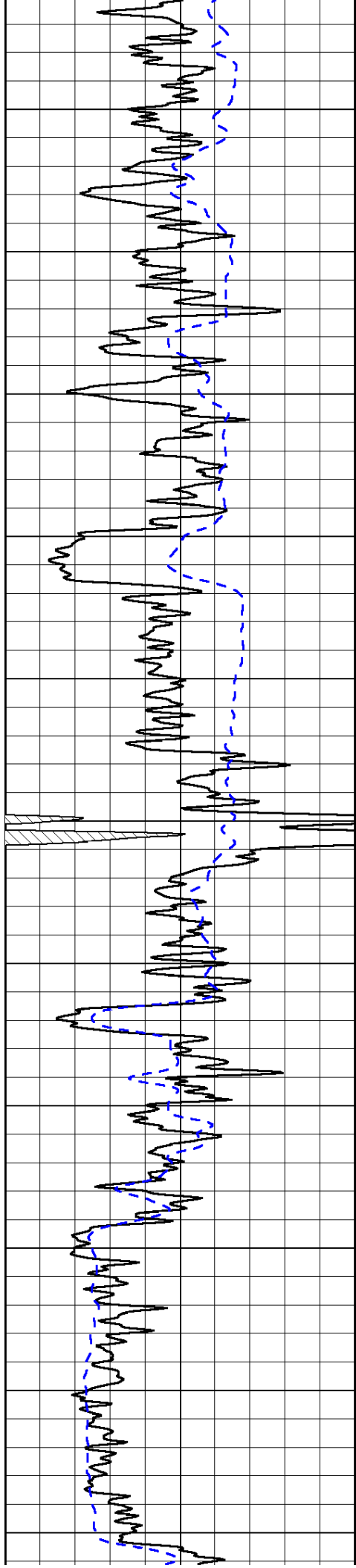
LSPD

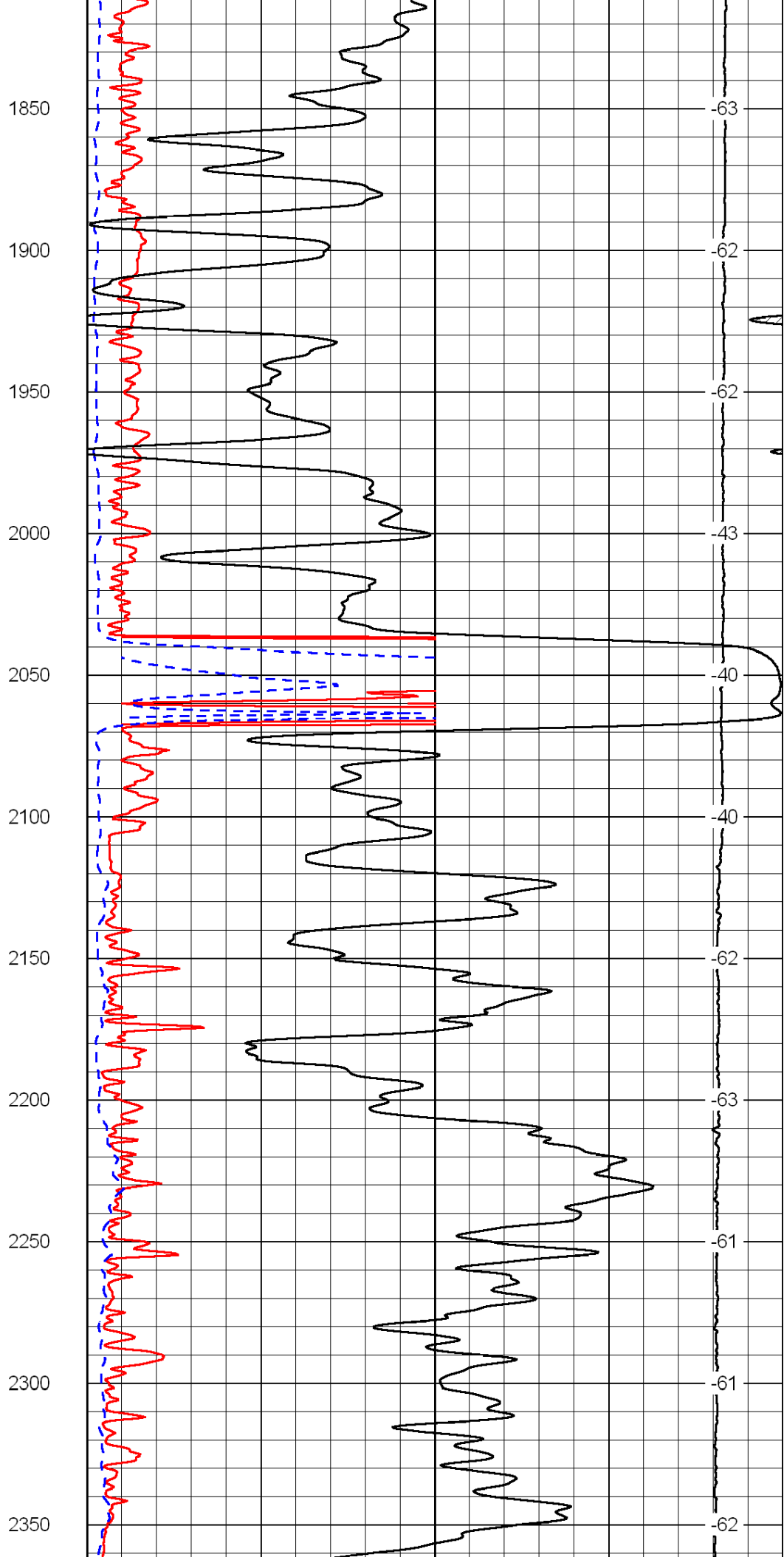
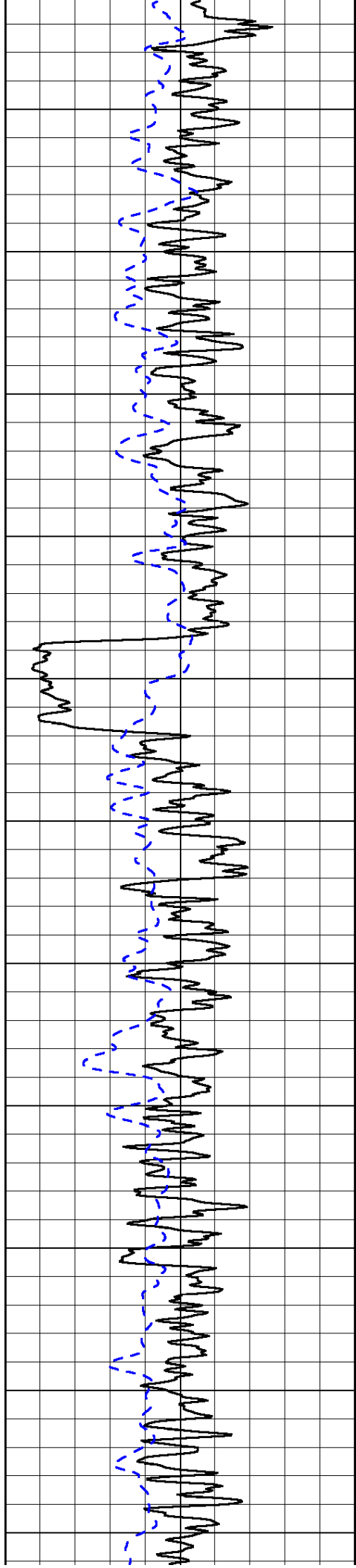
1000	Conductivity	0
15000	Line Tension	0

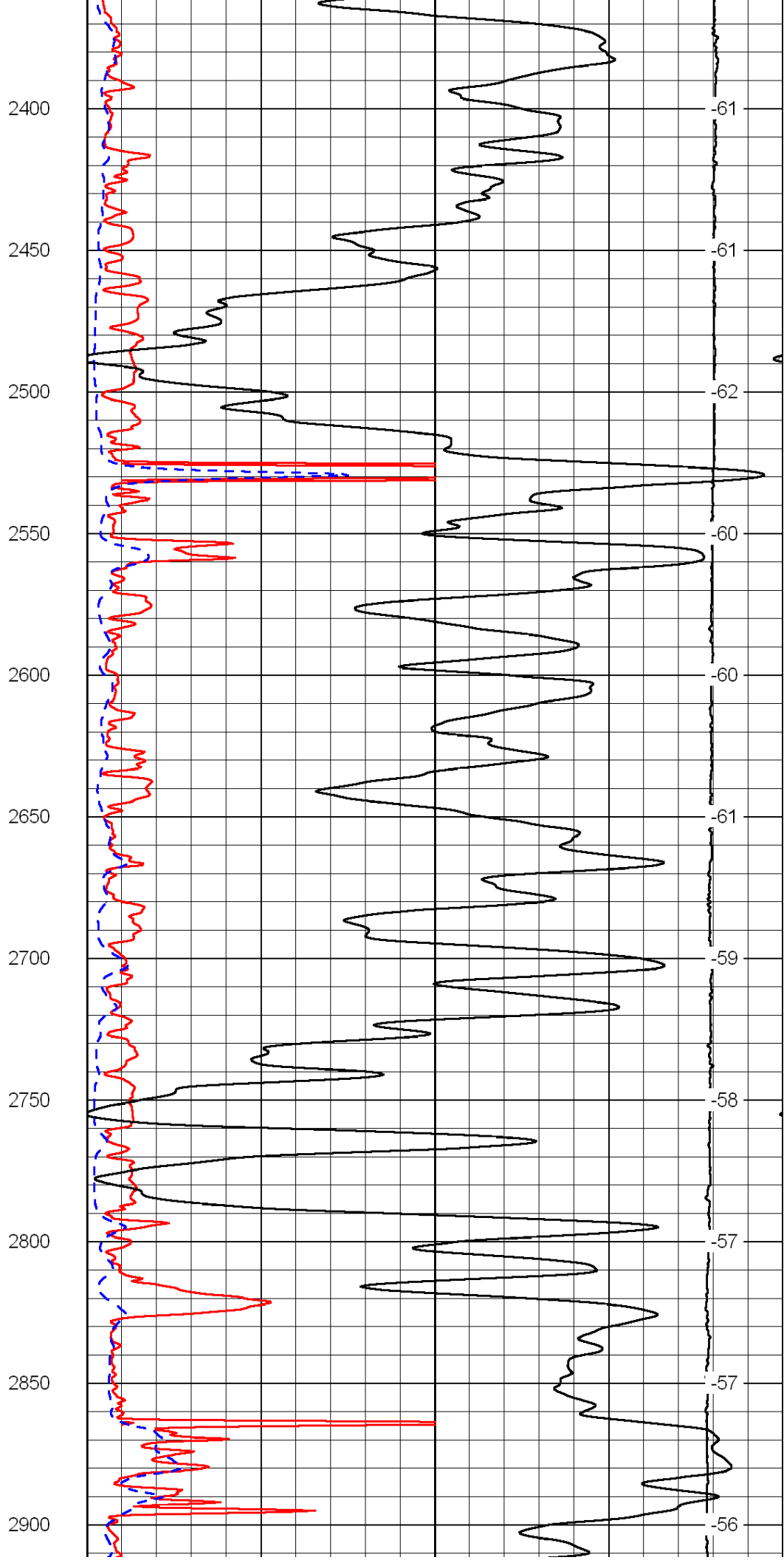
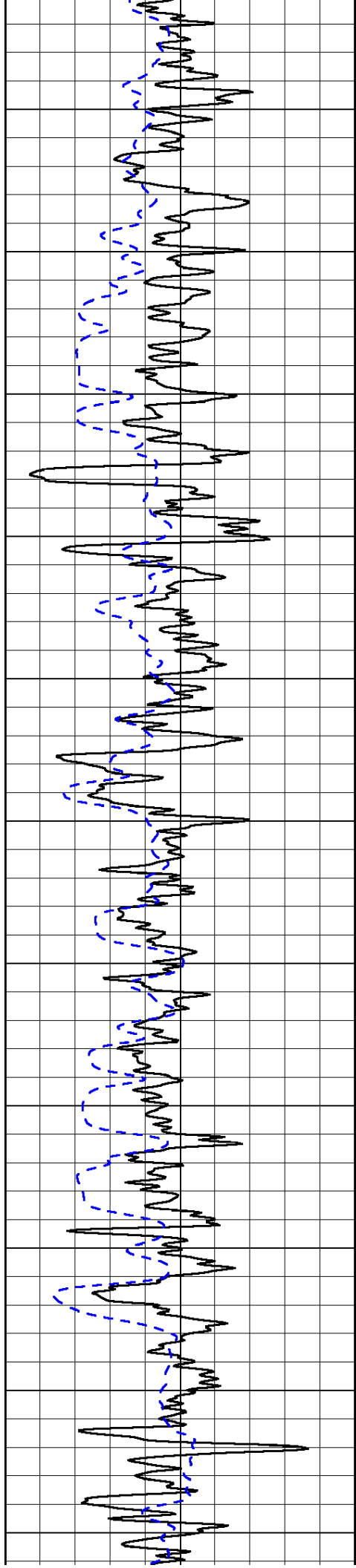
50	Shallow Resistivity	500
50	Deep Resistivity	500

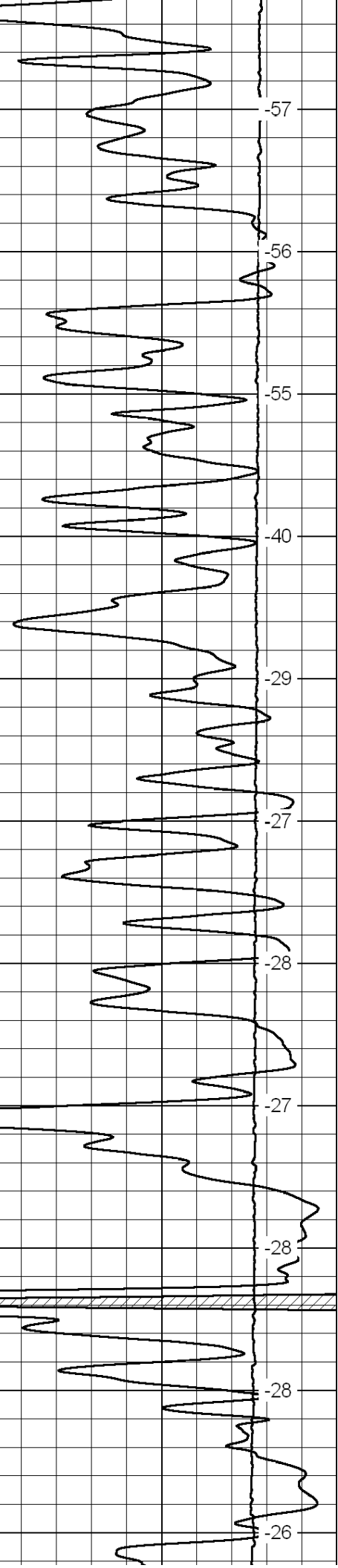
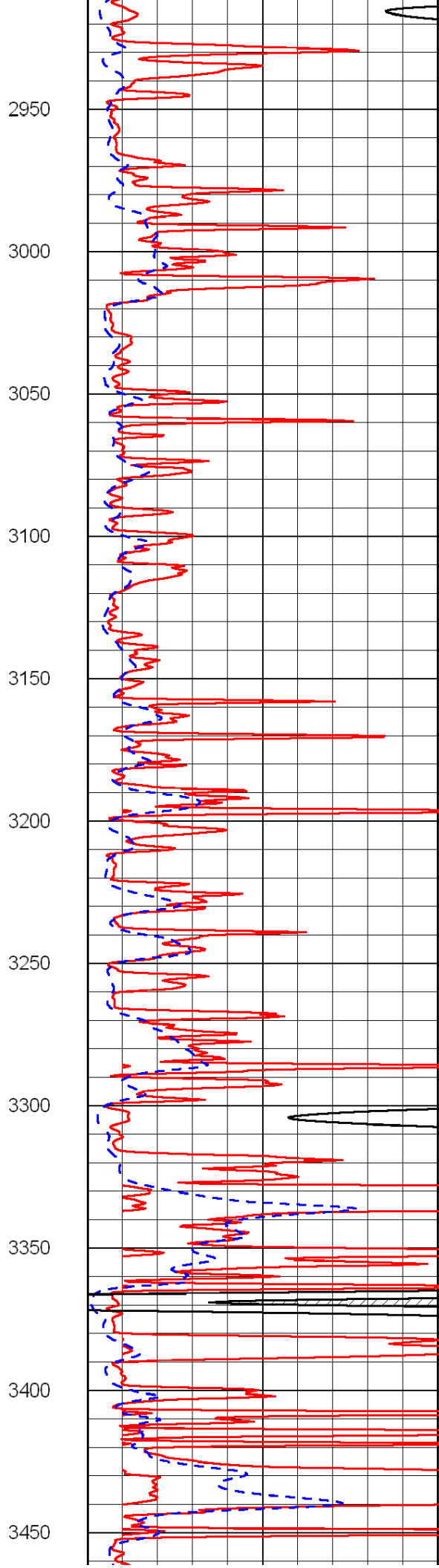
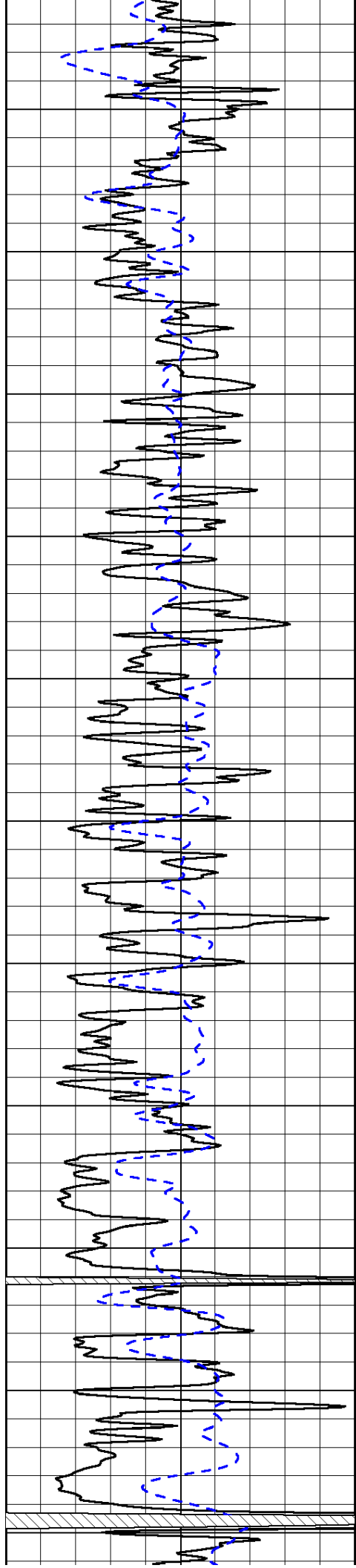


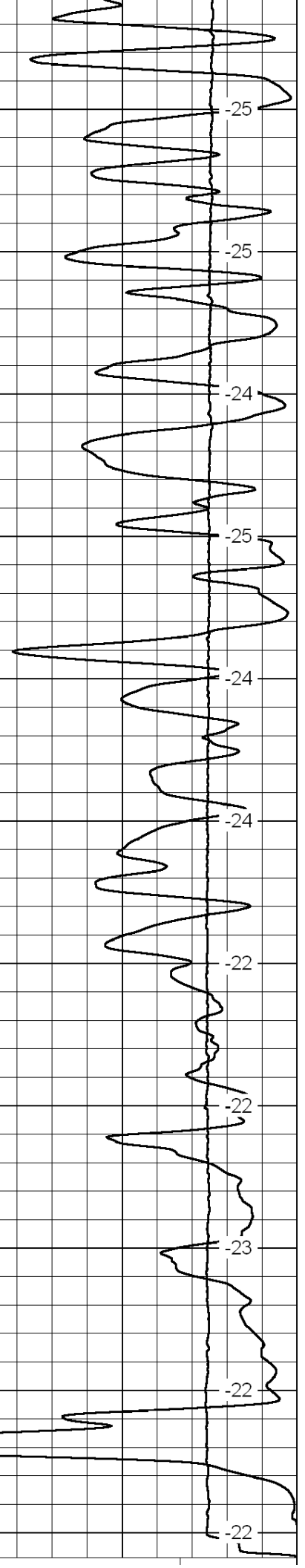
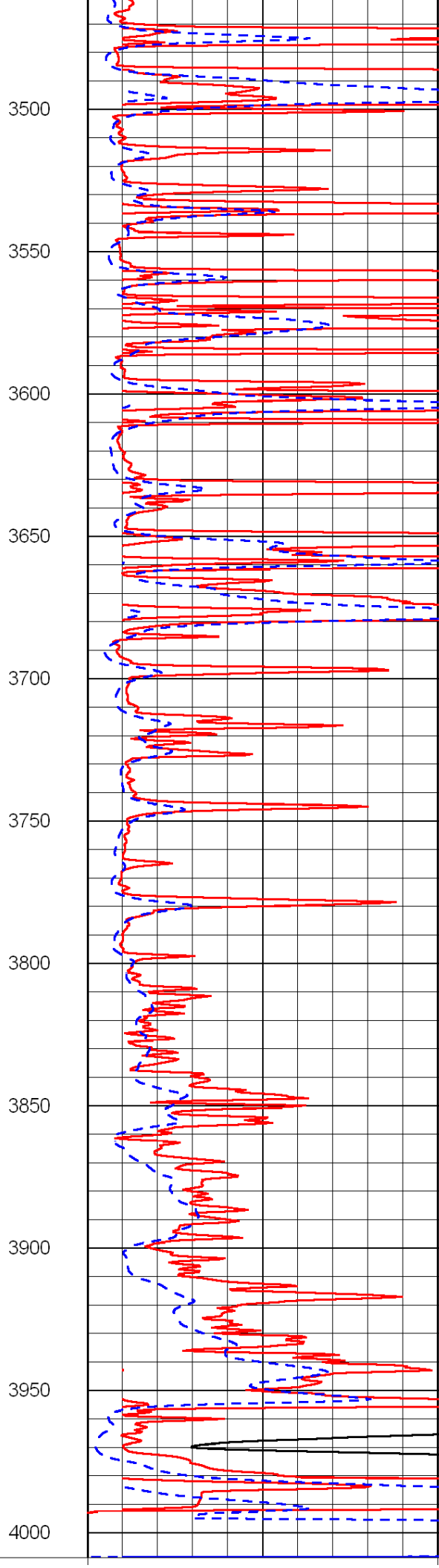
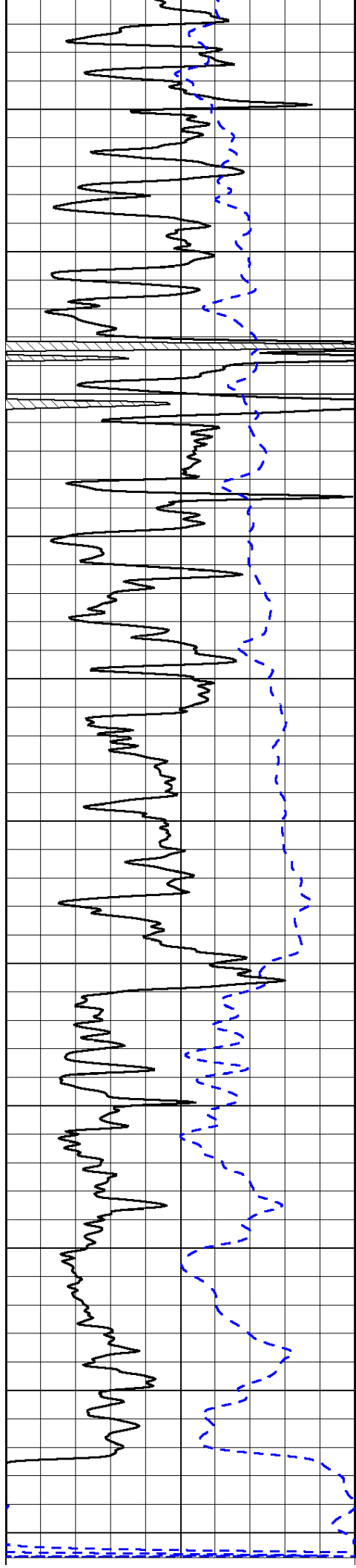












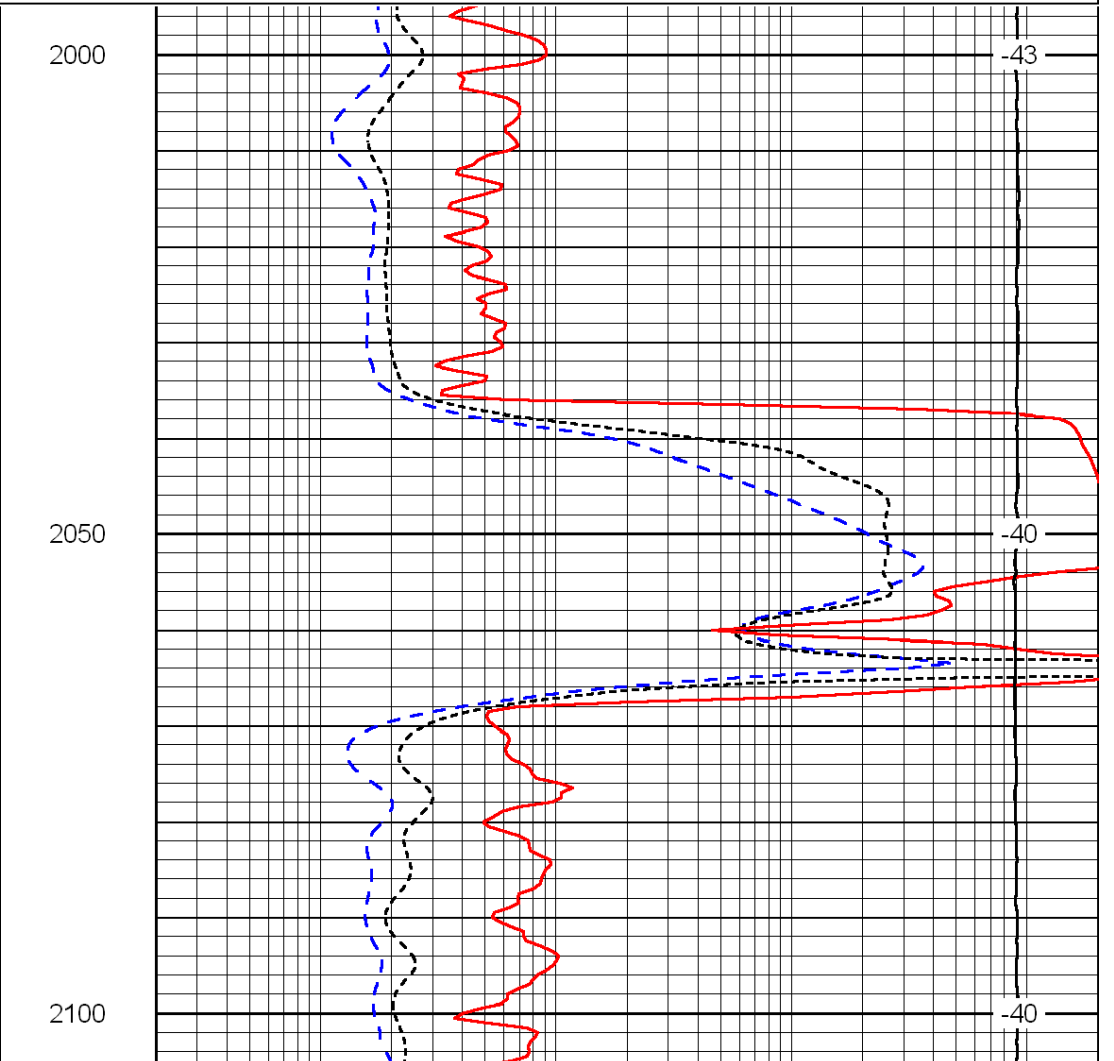
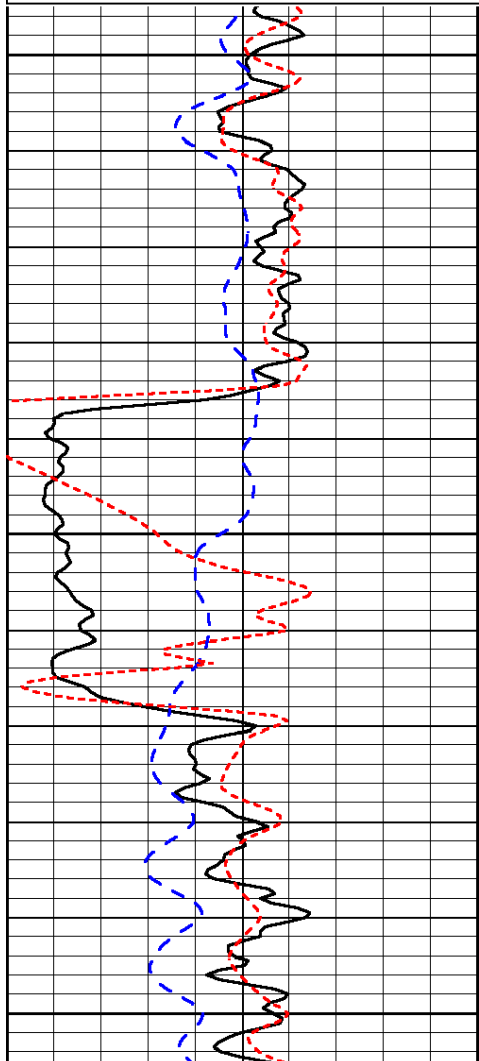
0	Gamma Ray	150
-200	SP (mV)	0

0	Shallow Resistivity	50
0	Deep Resistivity	50
1000	Conductivity	0
15000	Line Tension	0
50	Shallow Resistivity	50
50	Deep Resistivity	50

Database File: c:\warrior\data\klabzuba_brooks no. 34-11-3-25\klabzuba011212hd.db
 Dataset Pathname: dil/klabstack
 Presentation Format: dil
 Dataset Creation: Thu Jan 12 05:22:10 2012
 Charted by: Depth in Feet scaled 1:240

0	Gamma Ray	150
-200	SP (mV)	0
-160	Rxo / Rt	40

0.2	Deep Resistivity	2000
0.2	Medium Resistivity	2000
0.2	Shallow Resistivity	2000
15000	Line Tension	0



0	Gamma Ray	150
-200	SP (mV)	0
-160	Rxo / Rt	40

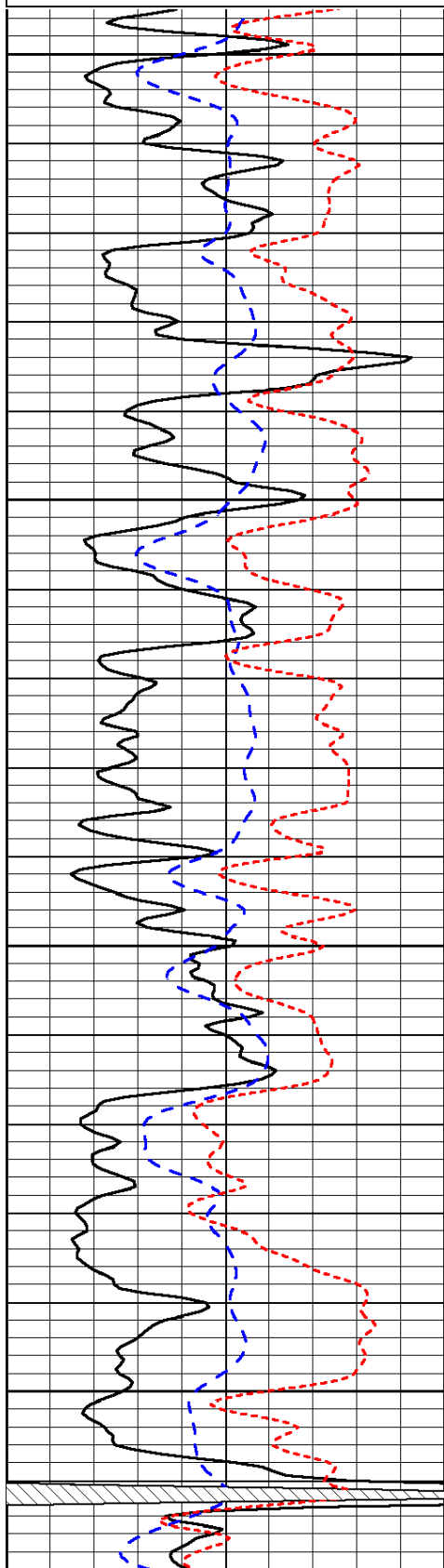
0.2	Deep Resistivity	2000
0.2	Medium Resistivity	2000
0.2	Shallow Resistivity	2000
15000	Line Tension	0

Database File: c:\warrior\data\klabzuba_brooks no. 34-11-3-25\klabzuba011212hd.db
 Dataset Pathname: dil/klabstack
 Presentation Format: dil
 Dataset Creation: Thu Jan 12 05:22:10 2012
 Charted by: Depth in Feet scaled 1:240

0	Gamma Ray	150
-200	SP (mV)	0
-160	Rxo / Rt	40

0.2	Deep Resistivity	2000
0.2	Medium Resistivity	2000
0.2	Shallow Resistivity	2000
15000	Line Tension	0

LSPD

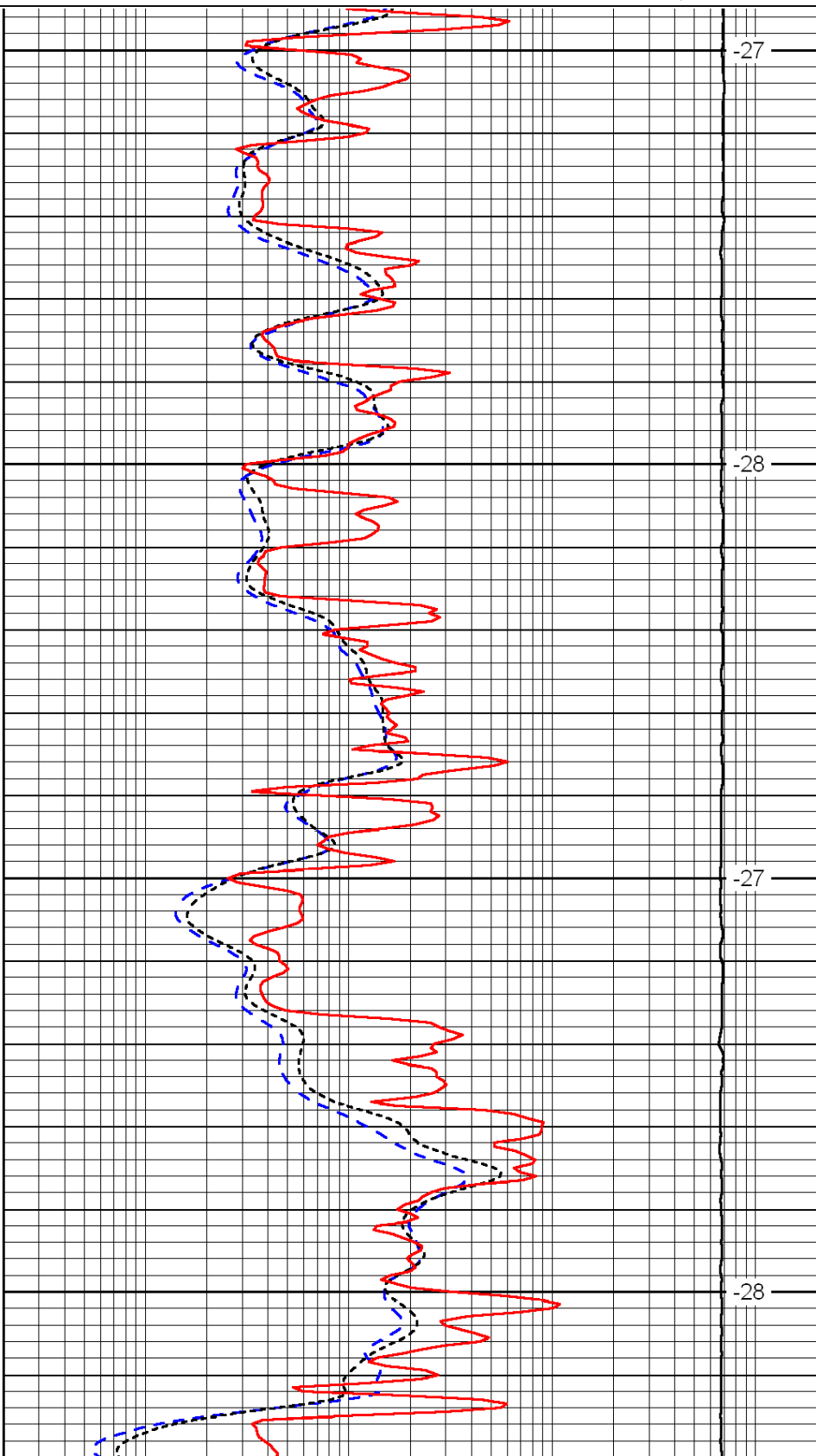


3200

3250

3300

3350

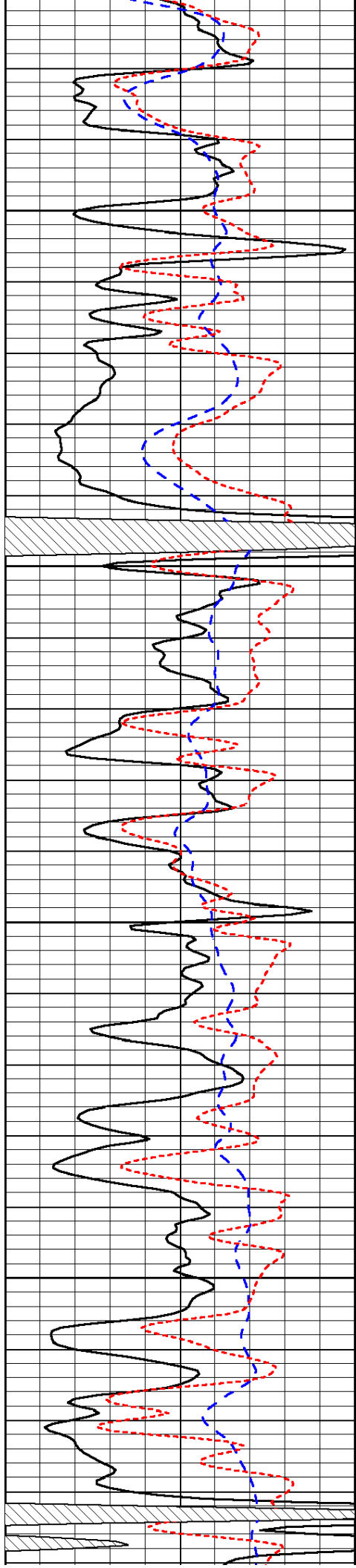


-27

-28

-27

-28

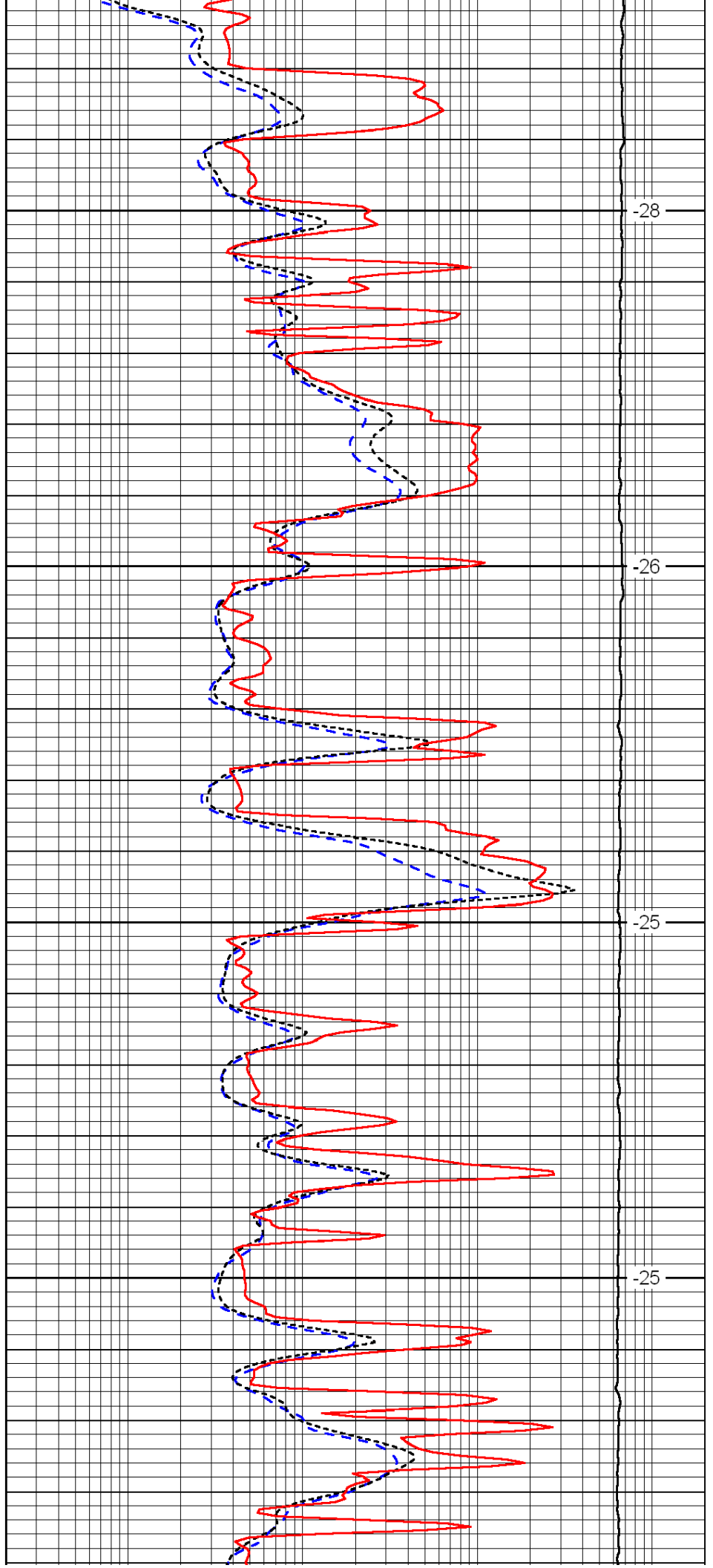


3400

3450

3500

3550

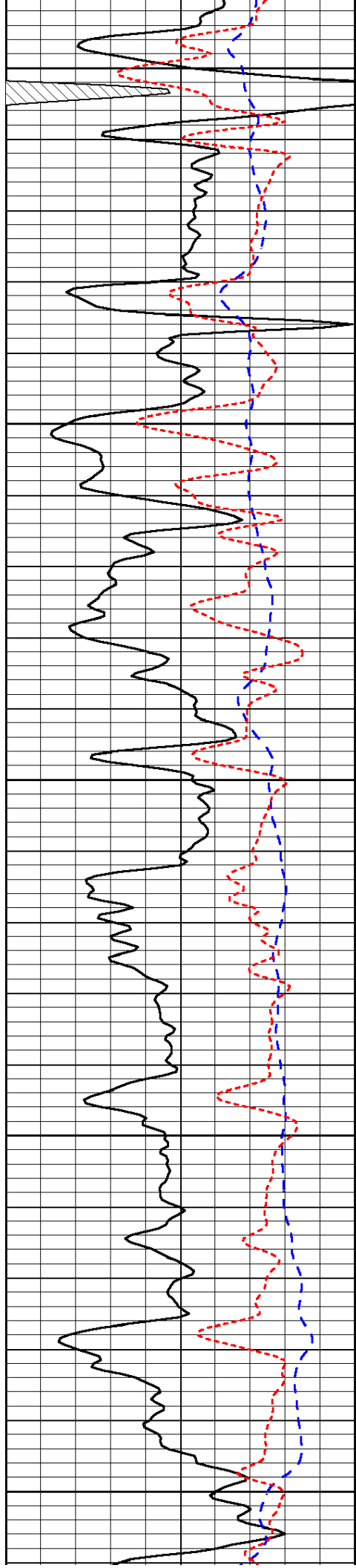


-28

-26

-25

-25



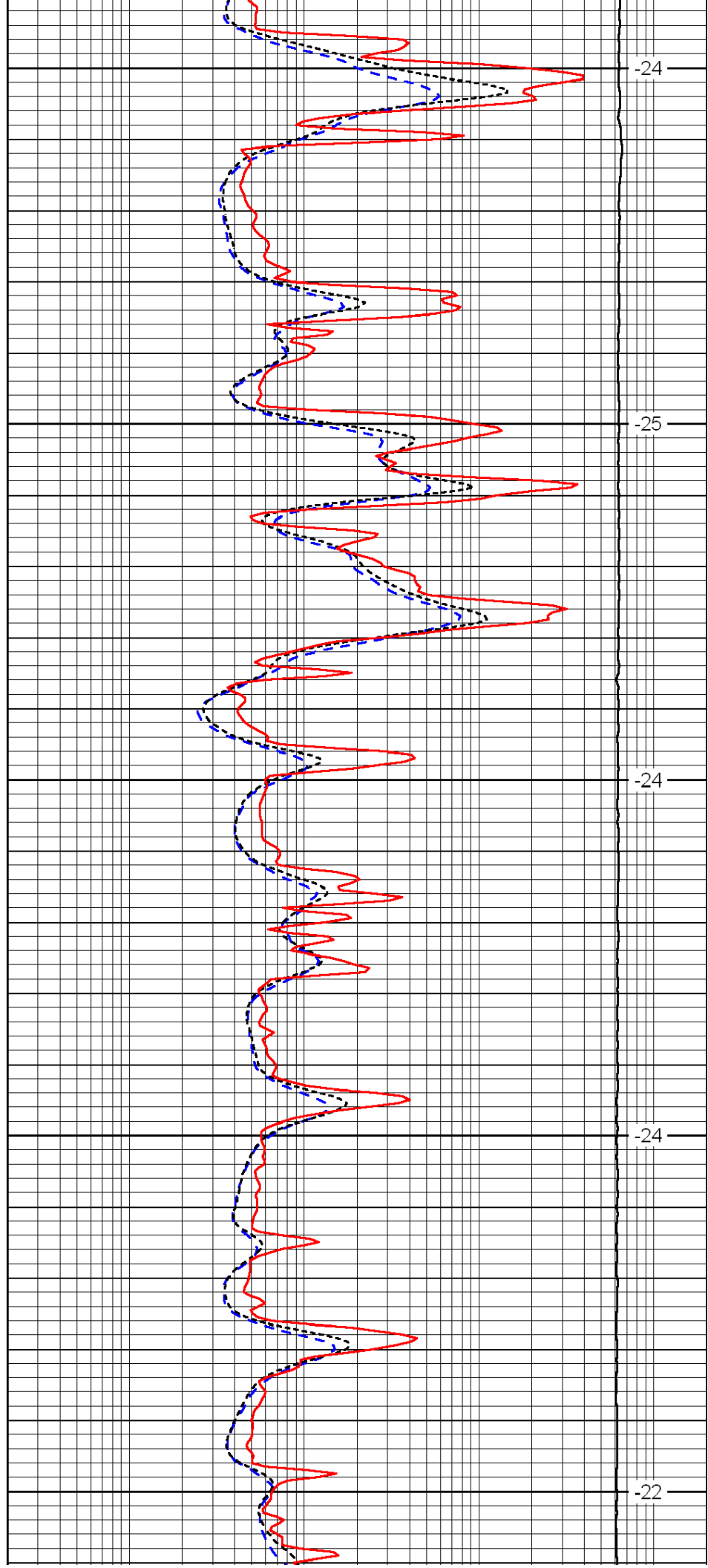
3600

3650

3700

3750

3800



-24

-25

-24

-24

-22

