



Pioneer Energy Services

# Dual Induction Log

API No.	15-135-25,465-00-00	
Company	American Warrior, Inc.	
Well	Goodman #2-34	
Field	Unknown	
County	Ness	State
		Kansas
Location	2453' FSL & 1065' FWL	
Sec: 34	Twp: 20 S	Rge: 26 W
Permanent Datum	Ground Level	Elevation 2445
Log Measured From	Kelly Bushing	13 Ft. Above Perm. Datum
Drilling Measured From	Kelly Bushing	
		Other Services CNL/CDL MEL
		Elevation K.B. 2458 D.F. 2445 G.L. 2445

Date	8/27/2012
Run Number	One
Depth Driller	4540
Depth Logger	4540
Bottom Logged Interval	4539
Top Log Interval	250
Casing Driller	8.625 @ 267
Casing Logger	264
Bit Size	7.875
Type Fluid in Hole	Chemical
Salinity, ppm CL	5.500
Density / Viscosity	9.2 50
pH / Fluid Loss	10.0 10.4
Source of Sample	Flowline
Rm @ Meas. Temp	.80 @ 75
Rmf @ Meas. Temp	.60 @ 75
Rmc @ Meas. Temp	1.08 @ 75
Source of Rmf / Rmc	Charts
Rm @ BHT	.49 @ 123
Operating Rig Time	4 1/2 Hours
Max Rec. Temp. F	123
Equipment Number	91
Location	Hays
Recorded By	K. Bange
Witnessed By	Kevin Timson

<<< Fold Here >>>

All interpretations are opinions based on inferences from electrical or other measurements and we cannot and do not guarantee the accuracy or correctness of any interpretation, and we shall not, except in the case of gross or willful negligence on our part, be liable or responsible for any loss, costs, damages, or expenses incurred or sustained by anyone resulting from any interpretation made by any of our officers, agents or employees. These interpretations are also subject to our general terms and conditions set out in our current Price Schedule.

### Comments

Thank you for using Log-Tech, Inc.  
(785) 625-3858

Beeler (E edge),  
12 1/2 S, E into

Database File: amwar082712hd.db  
 Dataset Pathname: dil/awstack1  
 Presentation Format: dil2in  
 Dataset Creation: Tue Aug 28 01:18:35 2012  
 Charted by: Depth in Feet scaled 1:600

0 Gamma Ray 150  
-200 SP 0

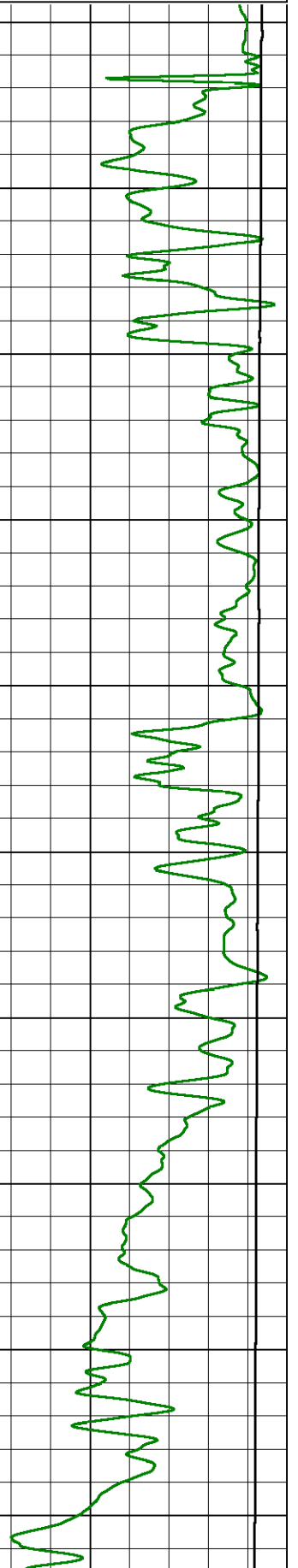
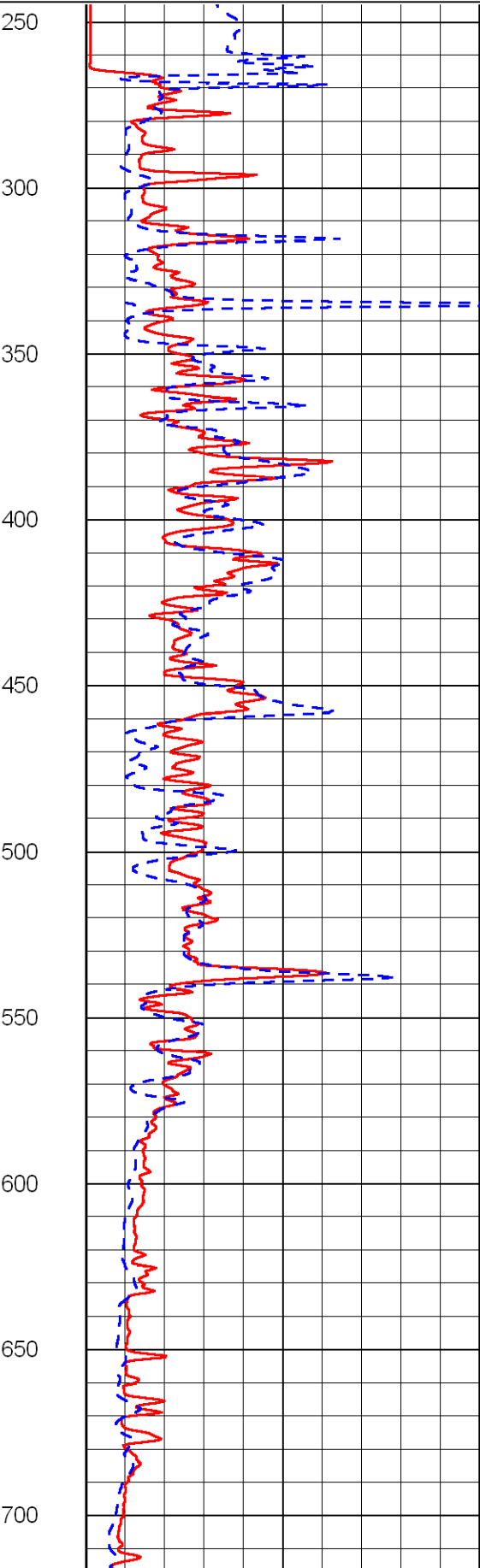
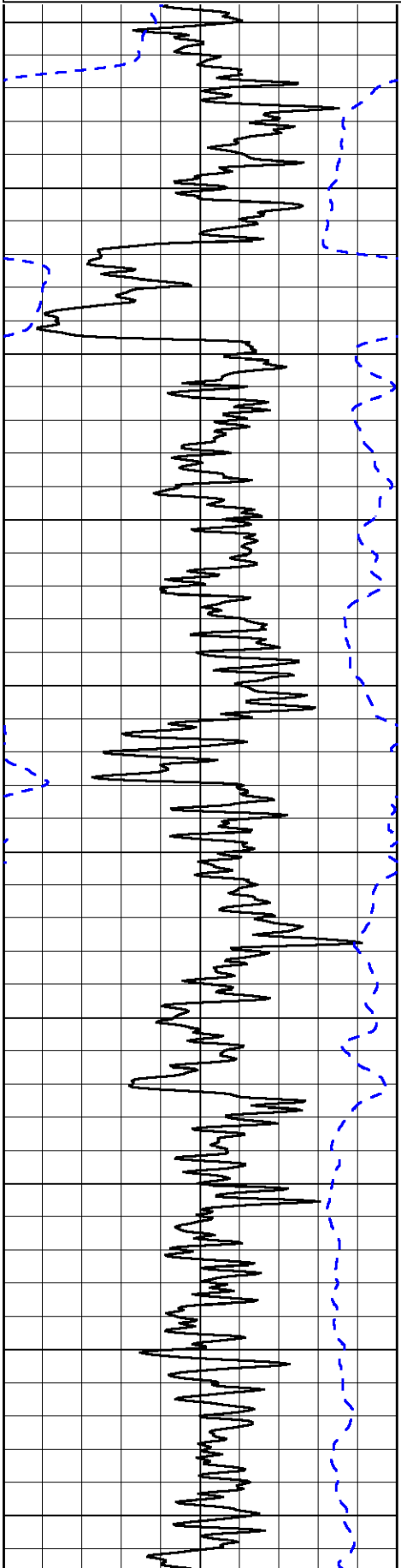
0 Shallow Resistivity 50  
0 Deep Resistivity 50

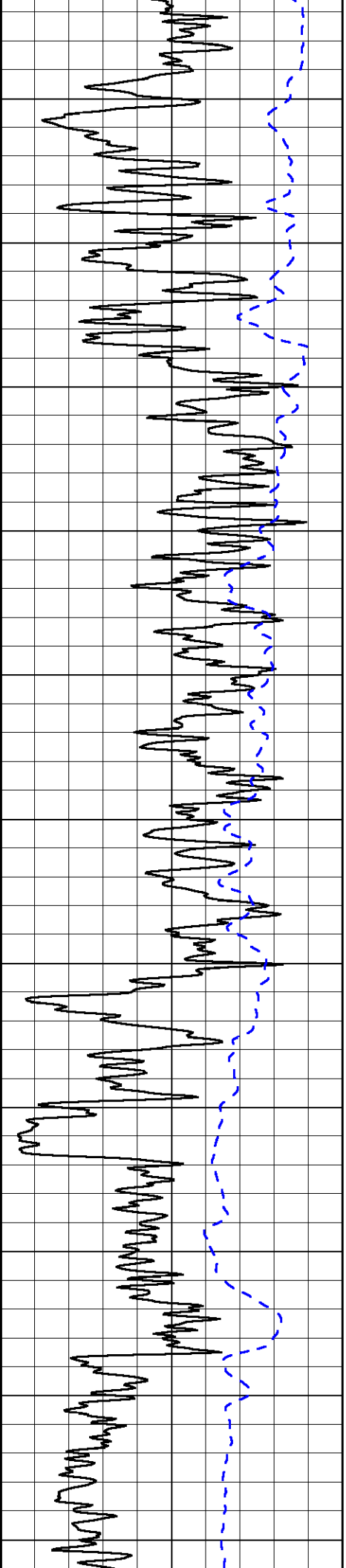
1000 Conductivity 0

15000 Line Tension 0

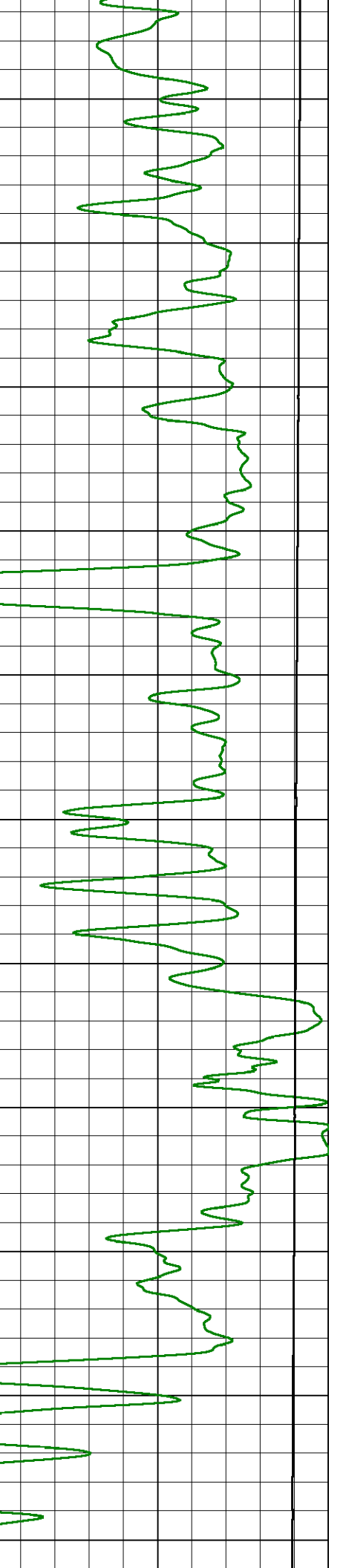
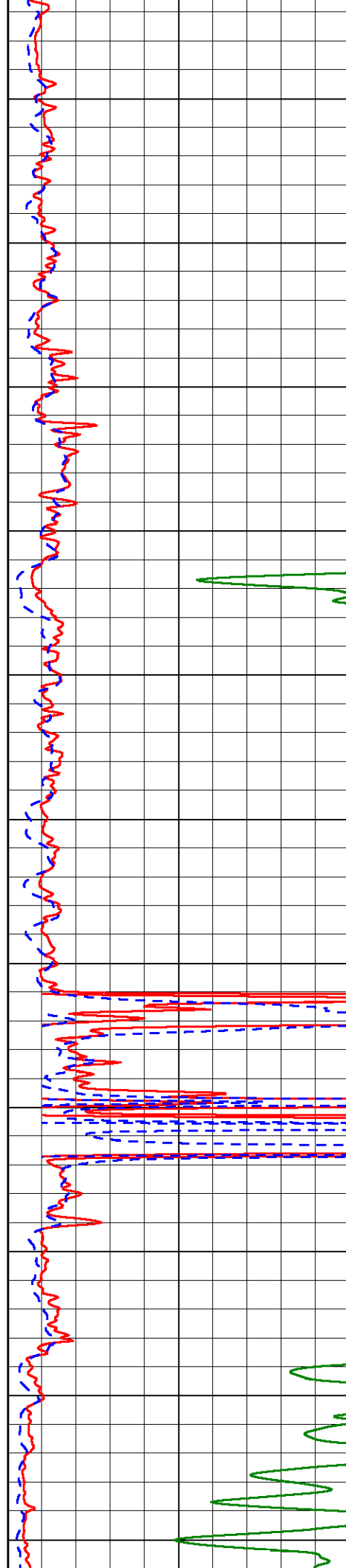
50 Shallow Resistivity 500

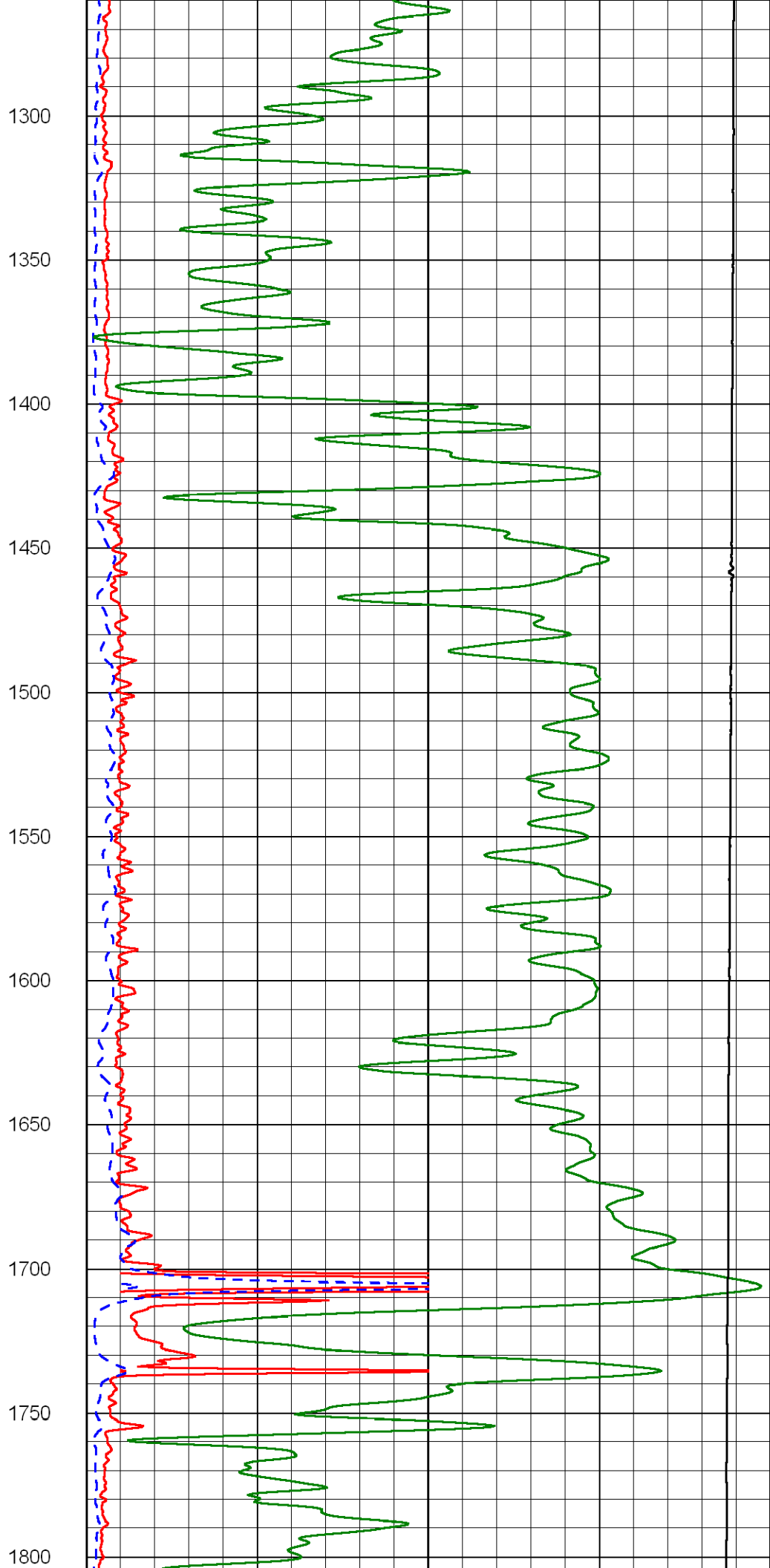
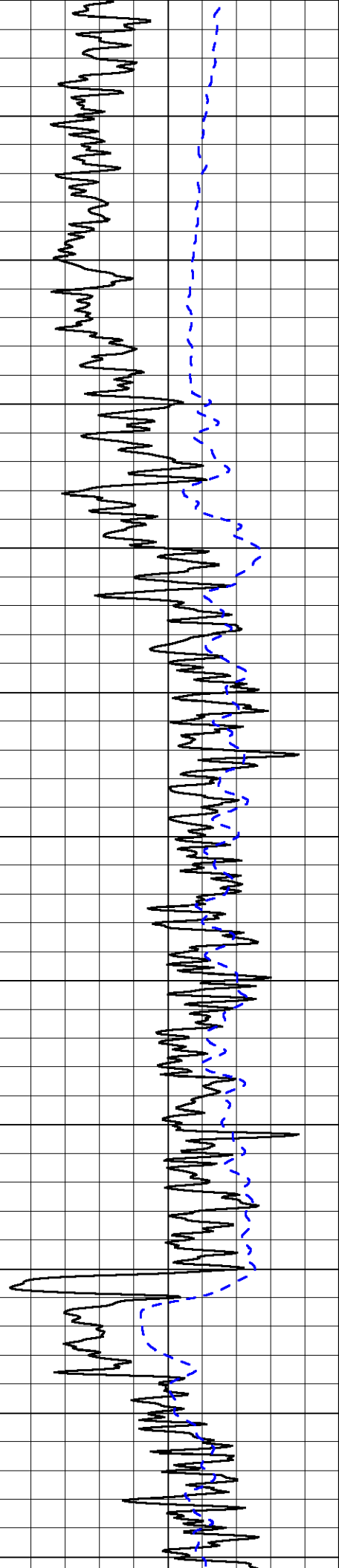
50 Deep Resistivity 500

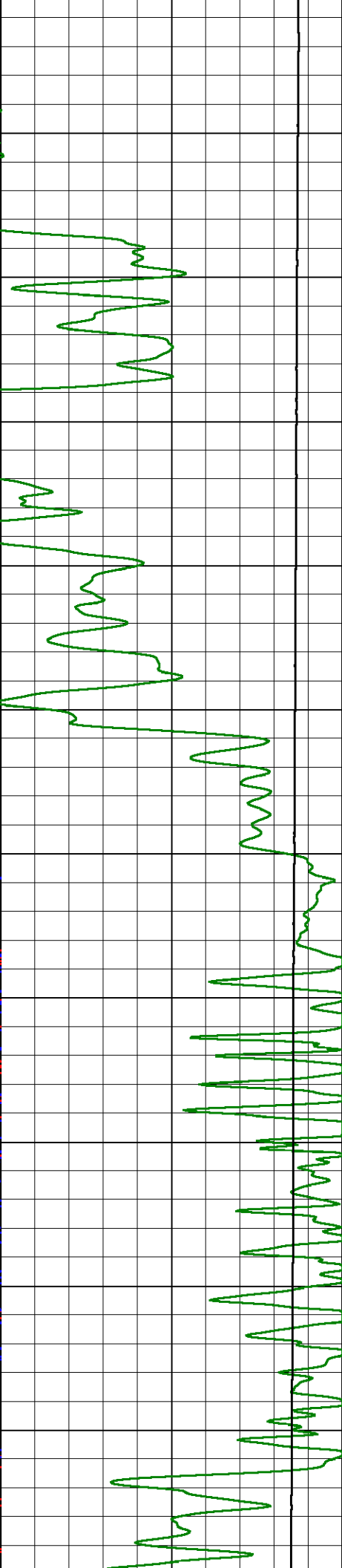
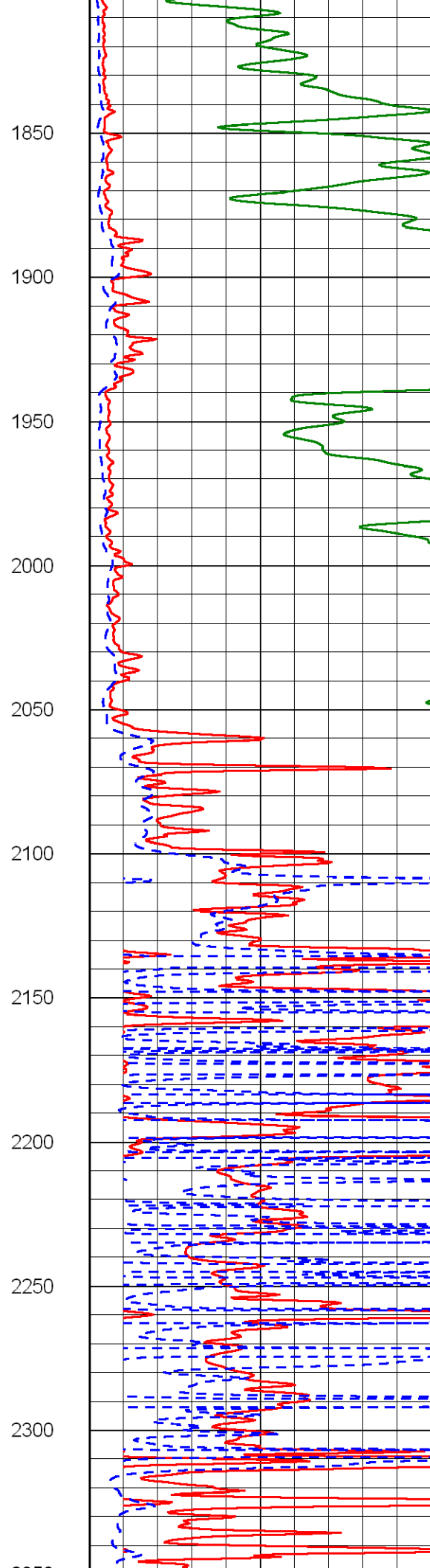
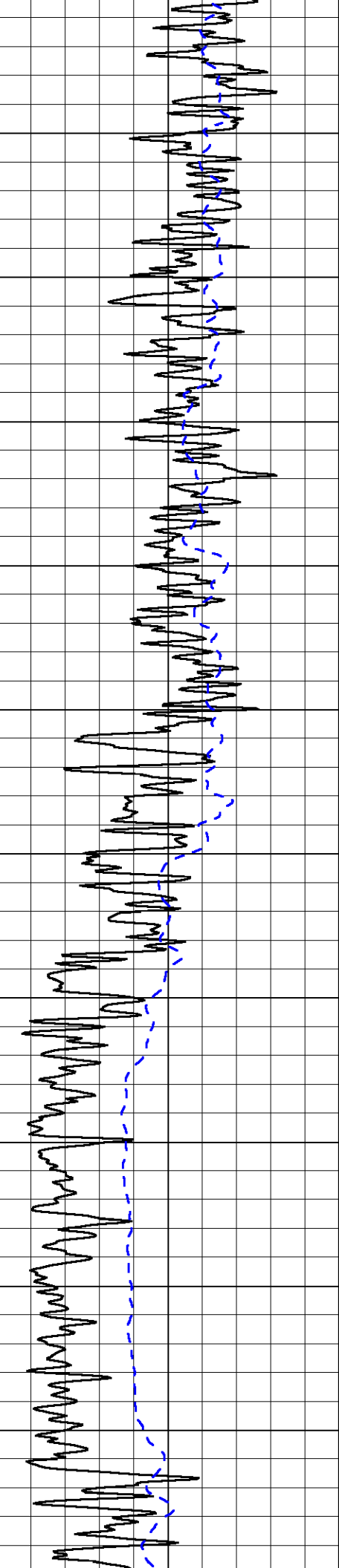


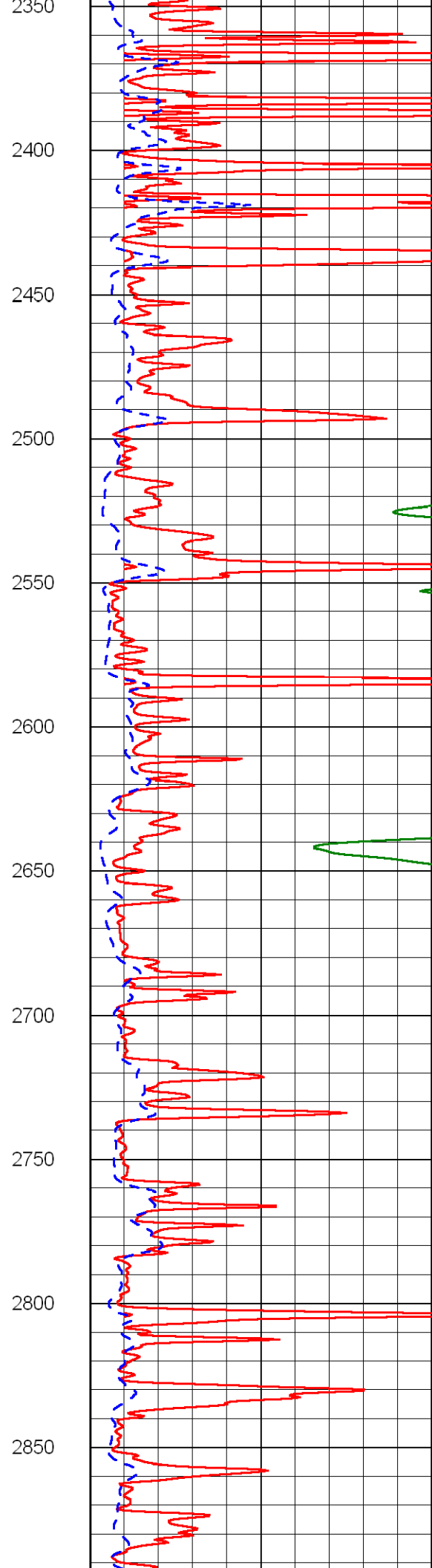
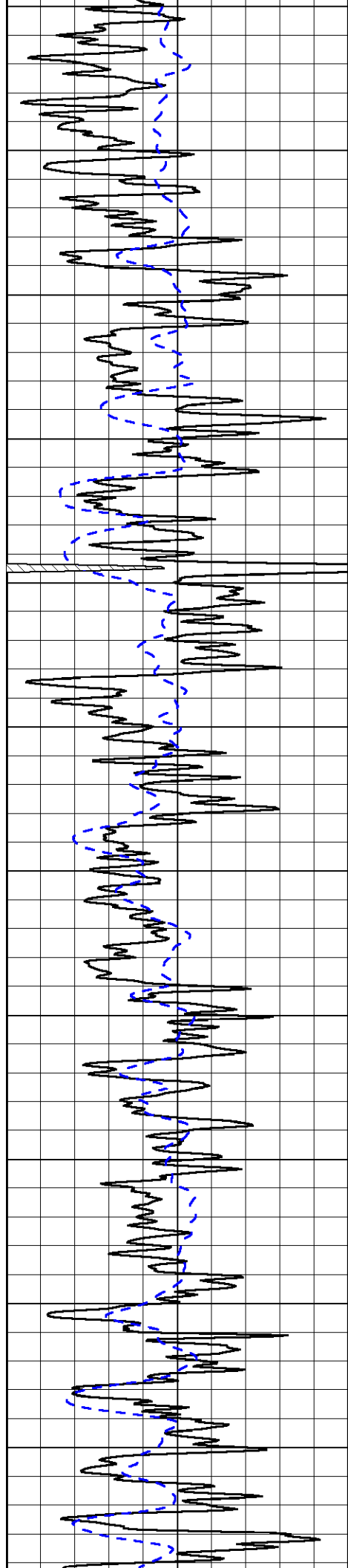


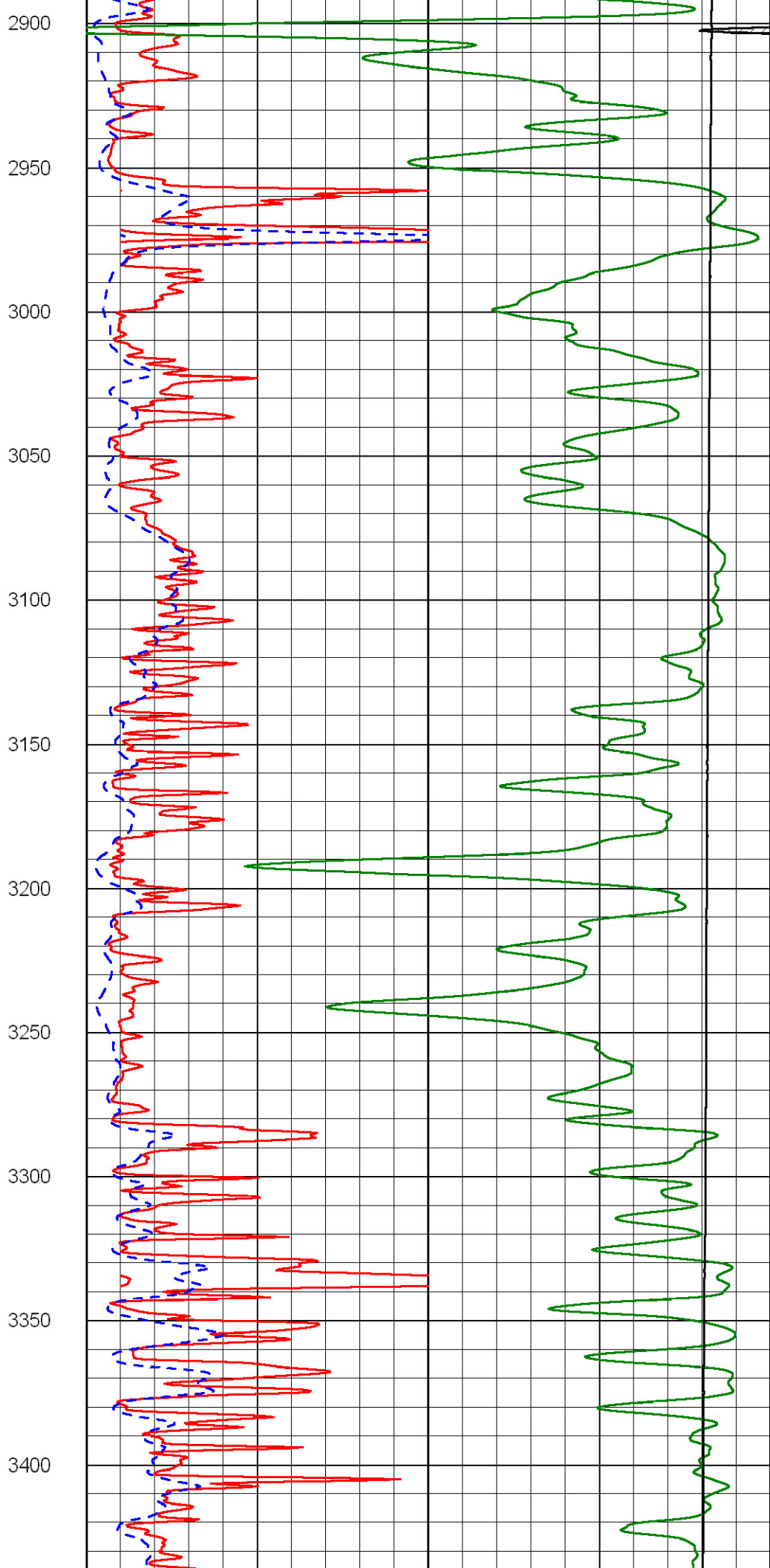
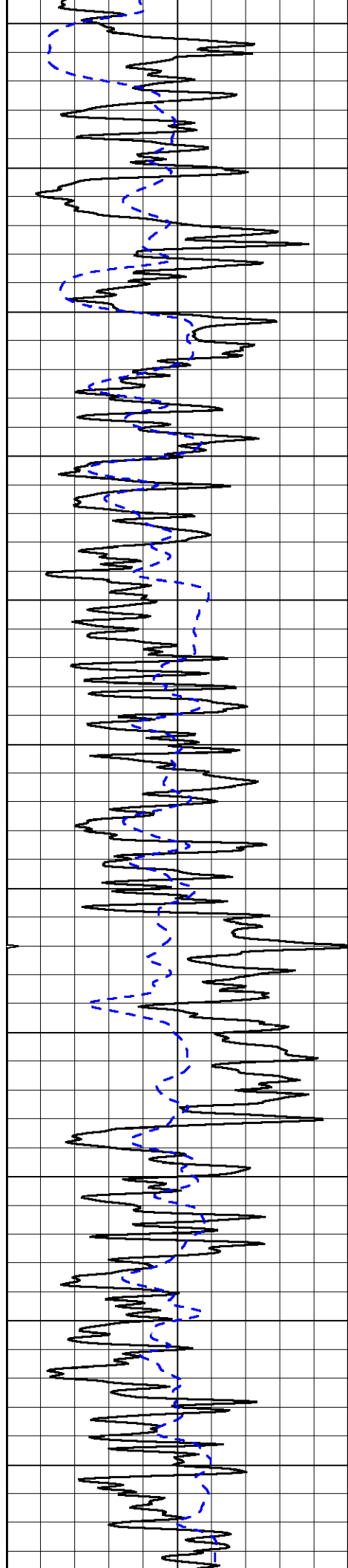
750  
800  
850  
900  
950  
1000  
1050  
1100  
1150  
1200  
1250

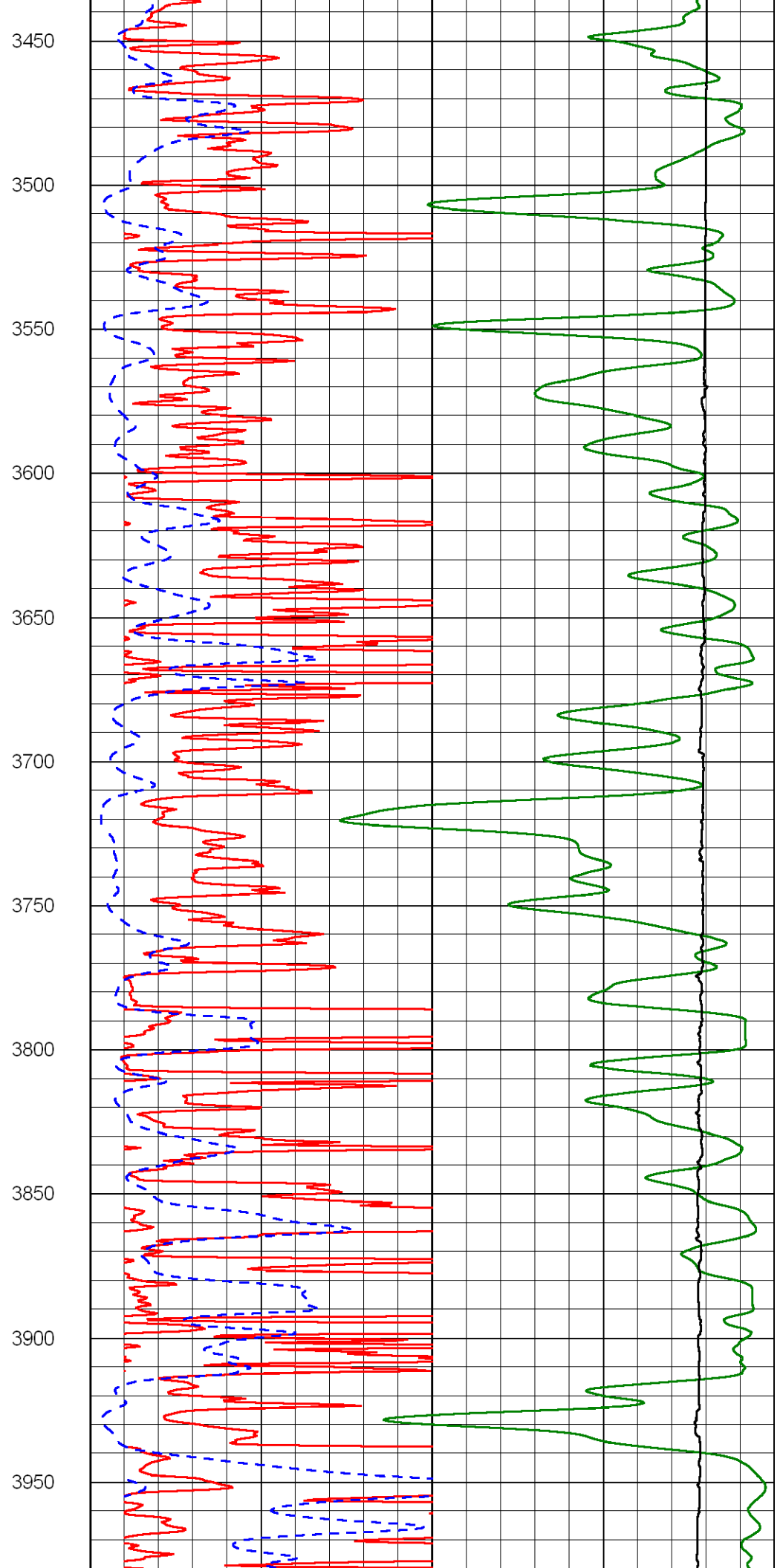
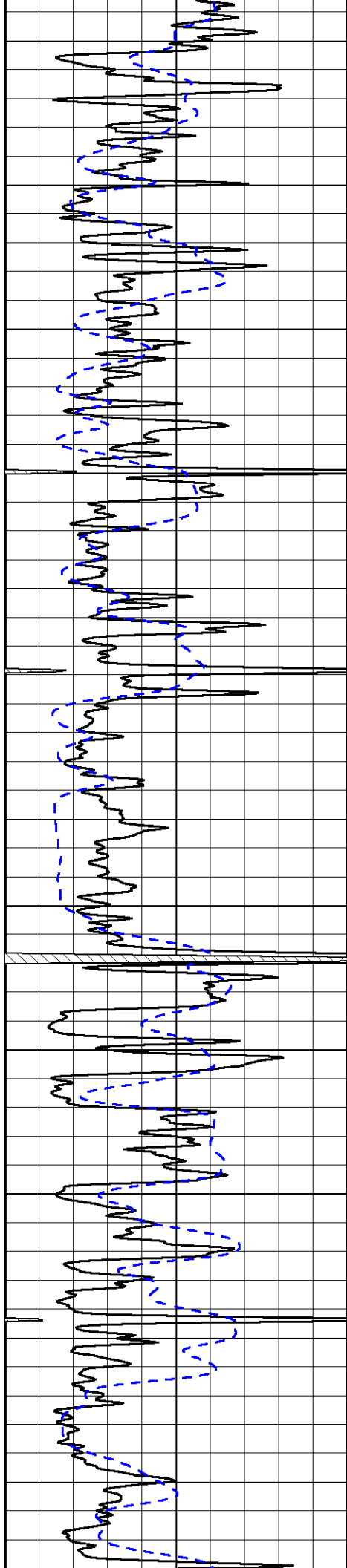




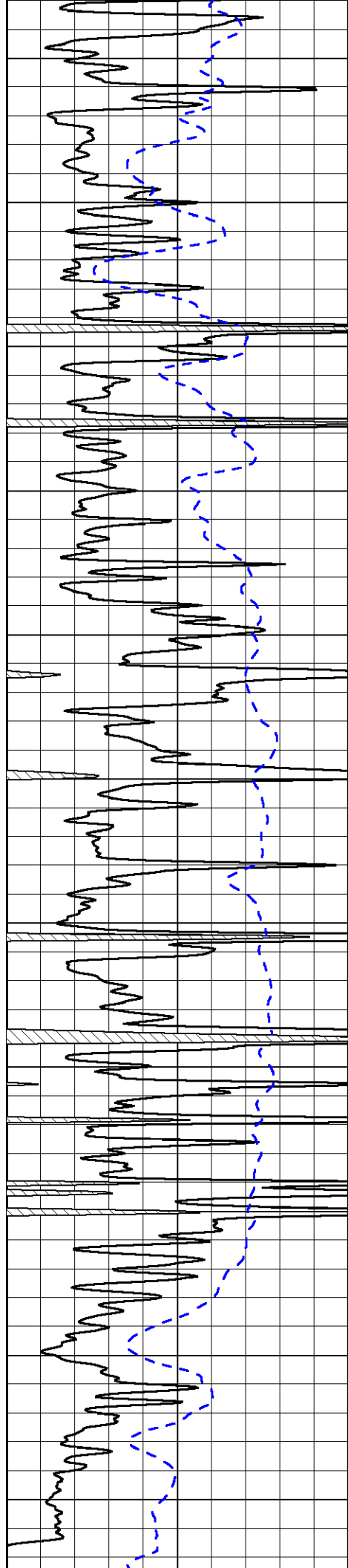




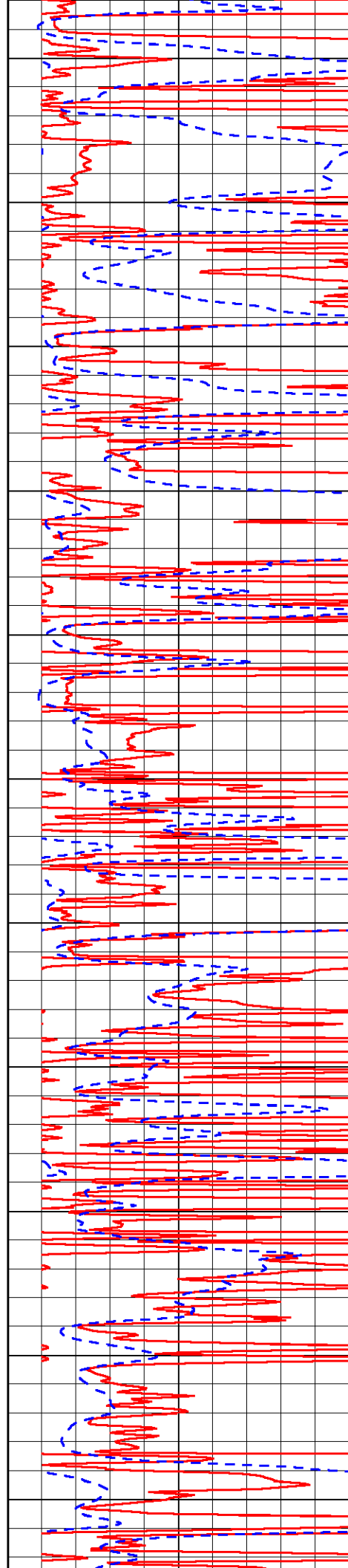


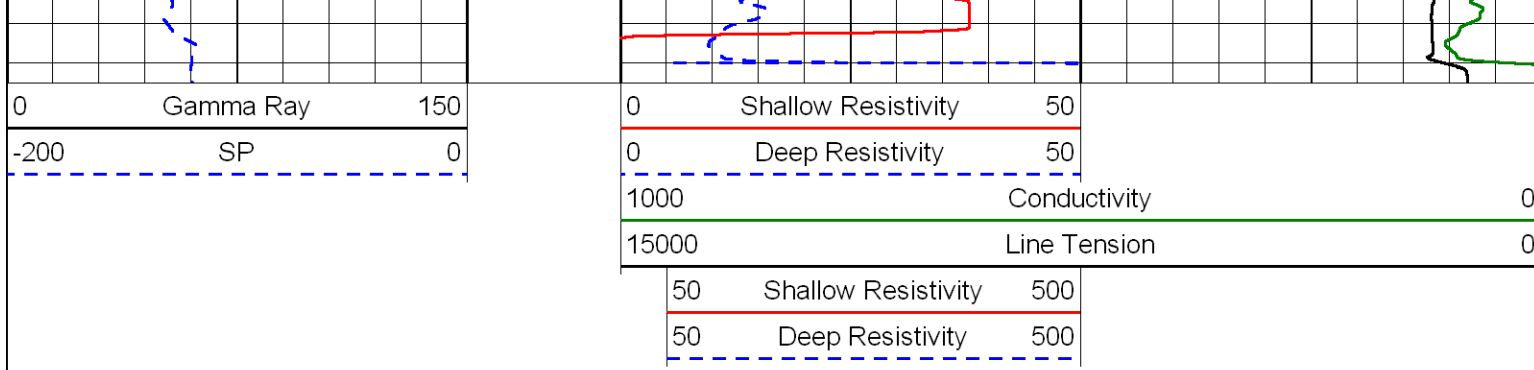




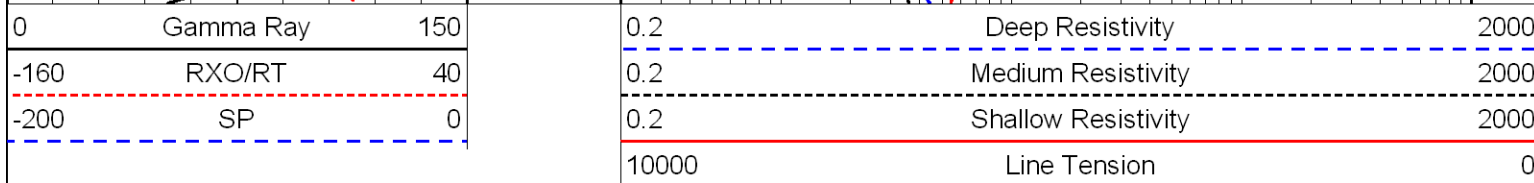
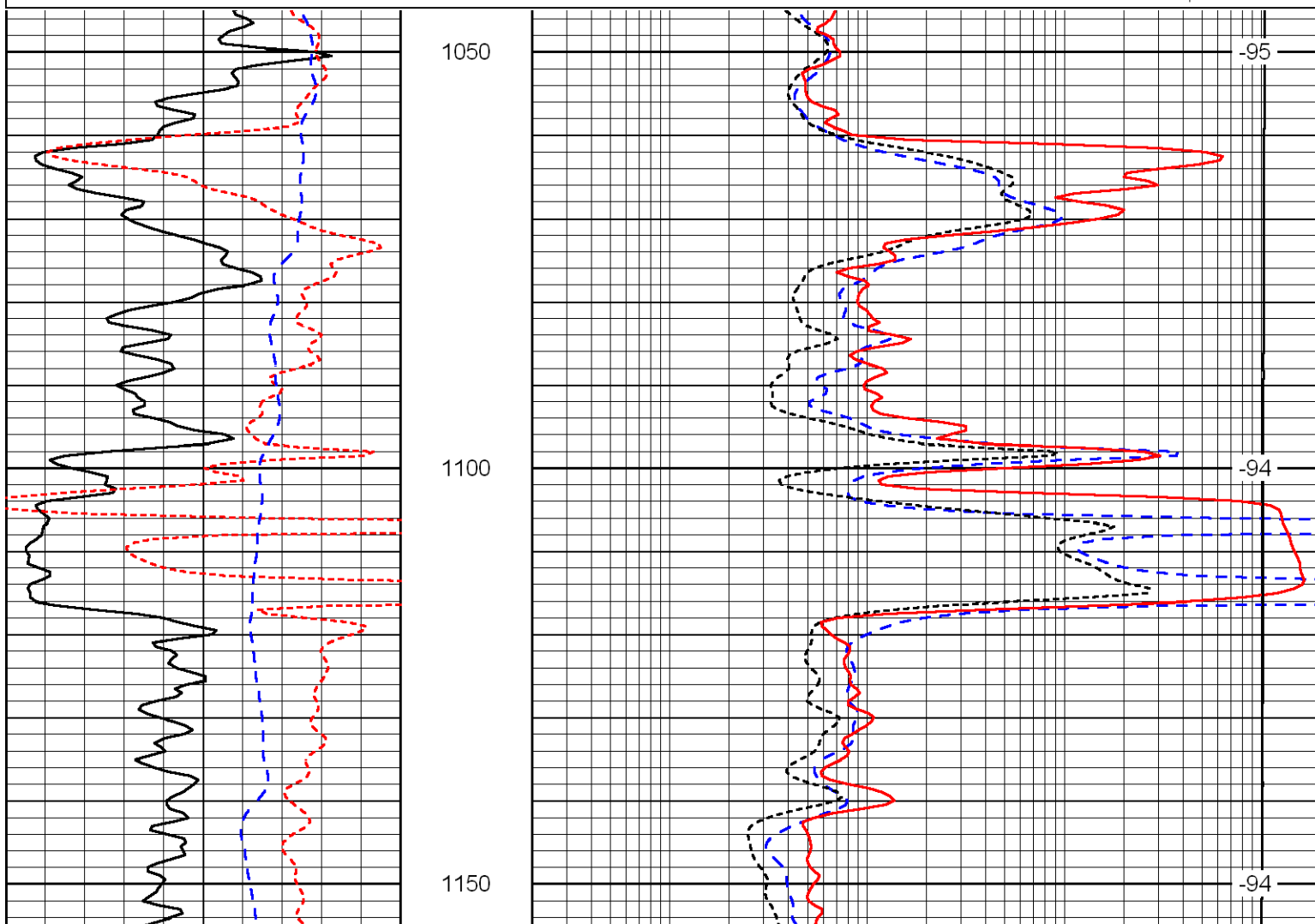
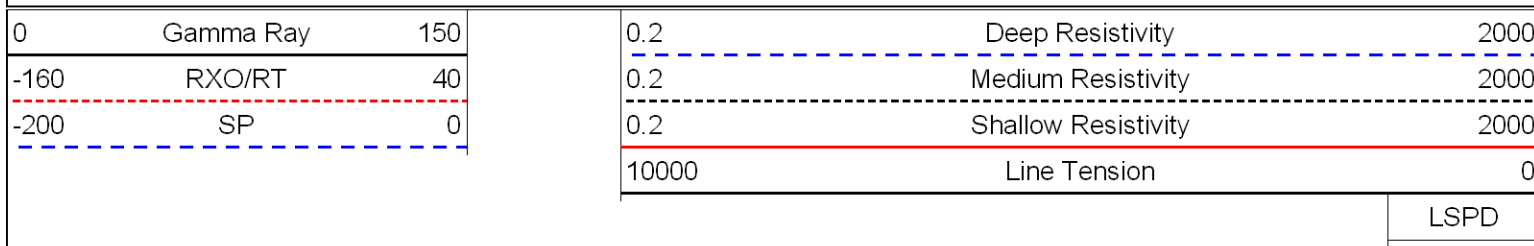


4000  
4050  
4100  
4150  
4200  
4250  
4300  
4350  
4400  
4450  
4500





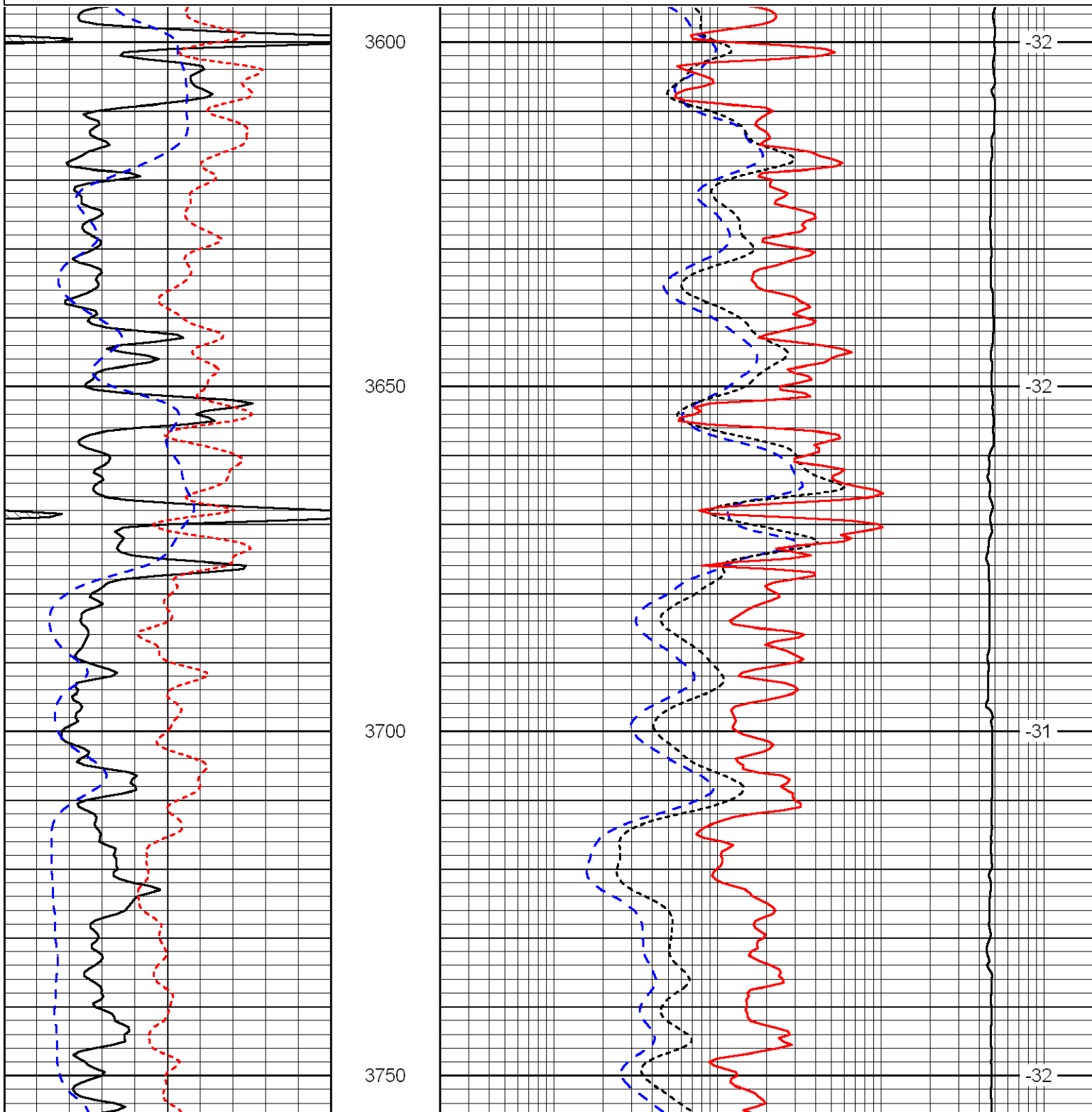
Database File: amwar082712hd.db  
 Dataset Pathname: dil/awstack1  
 Presentation Format: dil  
 Dataset Creation: Tue Aug 28 01:18:35 2012  
 Charted by: Depth in Feet scaled 1:240

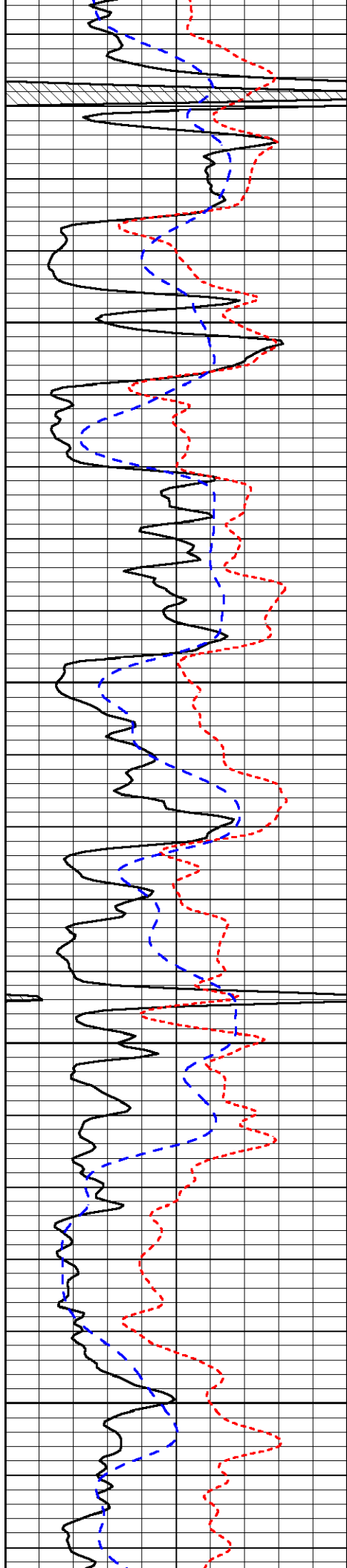


Database File: amwar082712hd.db  
 Dataset Pathname: dil/awstack1  
 Presentation Format: dil  
 Dataset Creation: Tue Aug 28 01:18:35 2012  
 Charted by: Depth in Feet scaled 1:240

0	Gamma Ray	150
-160	RXO/RT	40
-200	SP	0

0.2	Deep Resistivity	2000
0.2	Medium Resistivity	2000
0.2	Shallow Resistivity	2000
10000	Line Tension	0



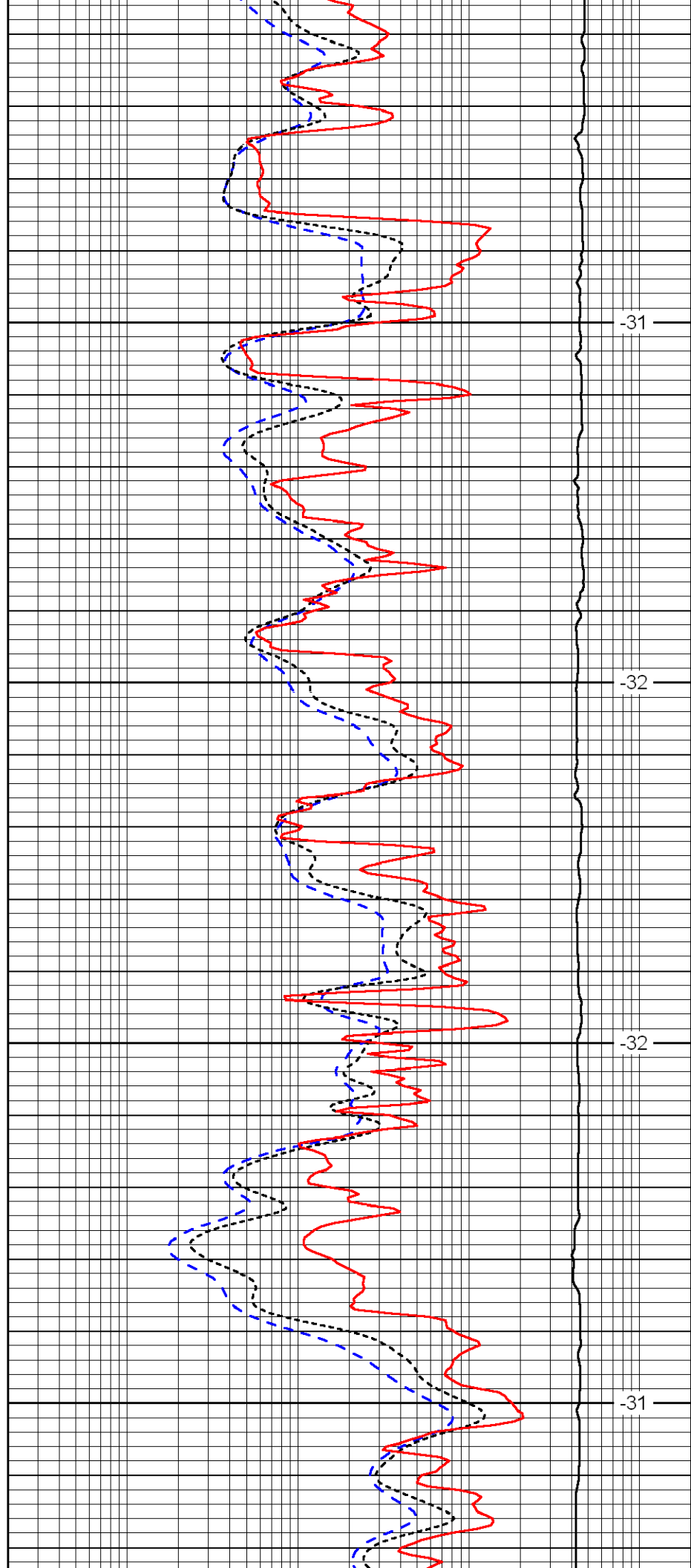


3800

3850

3900

3950

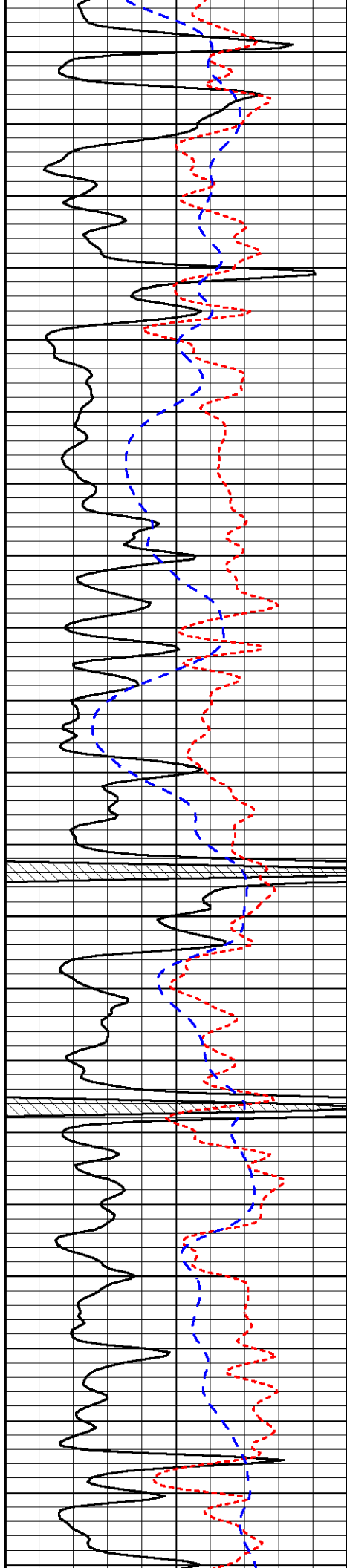


-31

-32

-32

-31

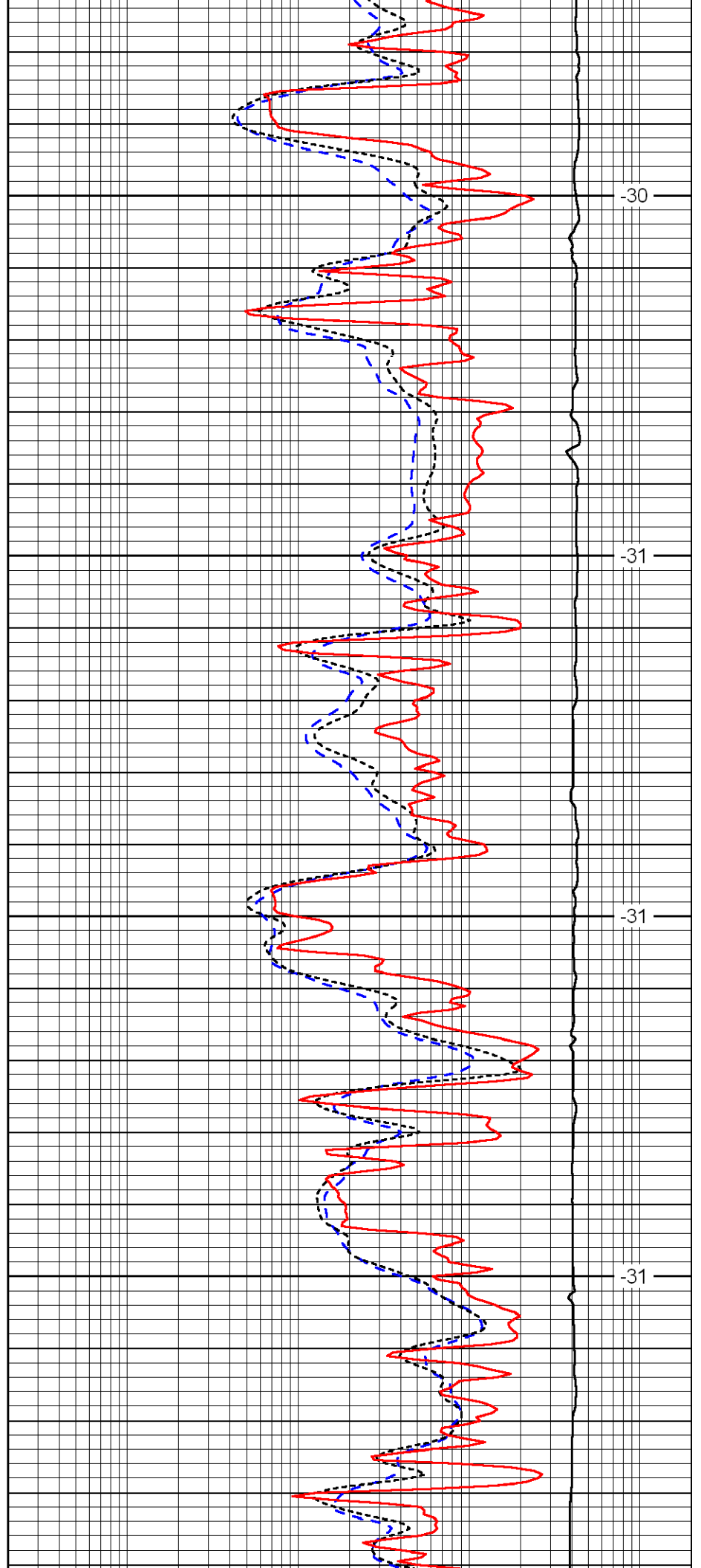


4000

4050

4100

4150

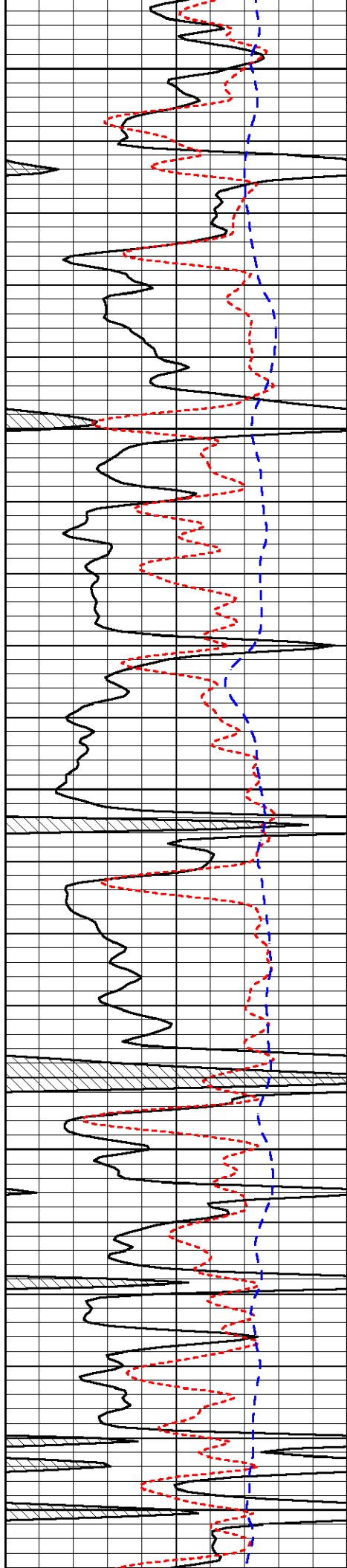


-30

-31

-31

-31



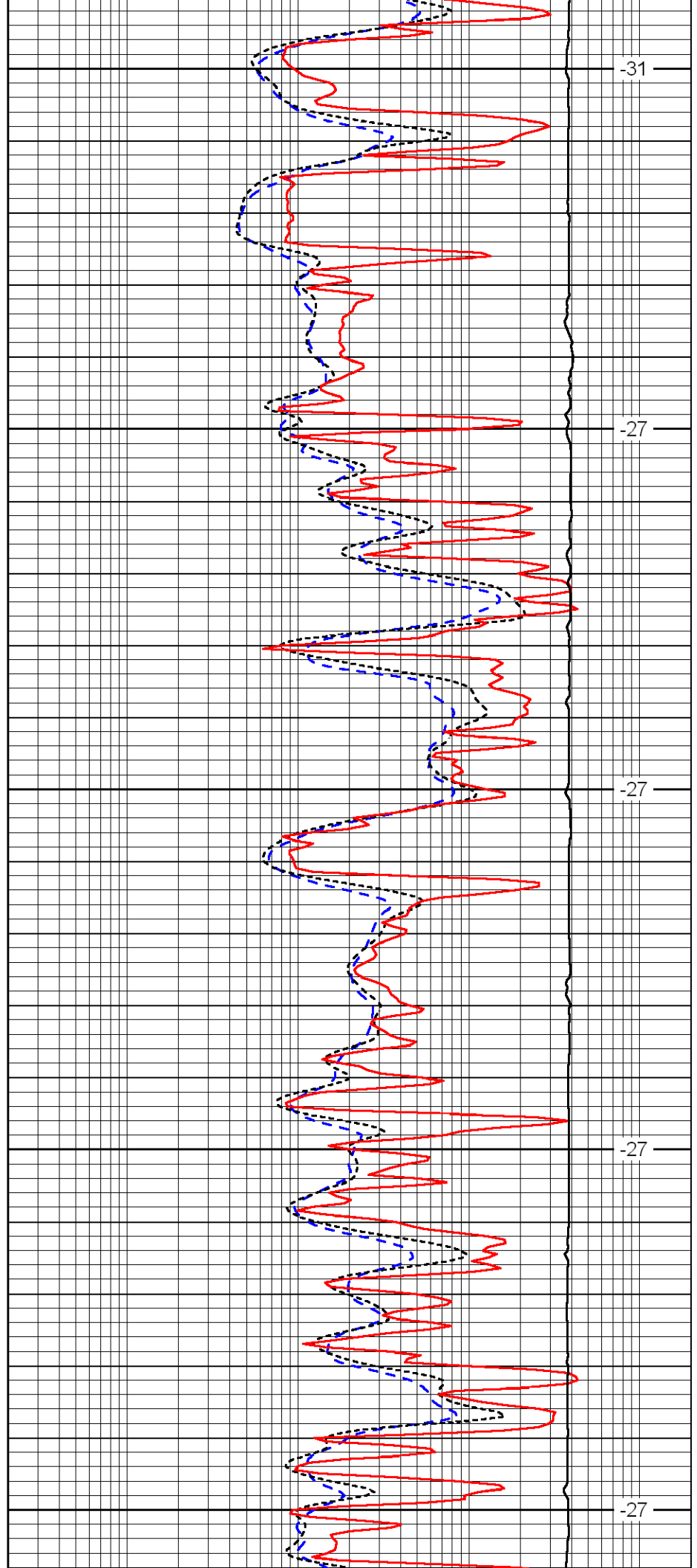
4200

4250

4300

4350

4400



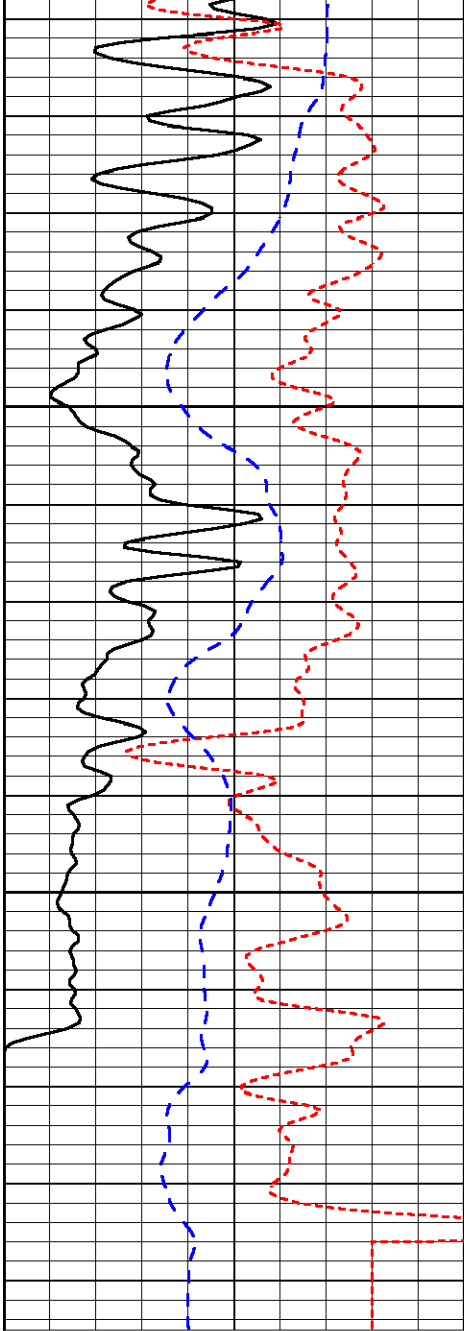
-31

-27

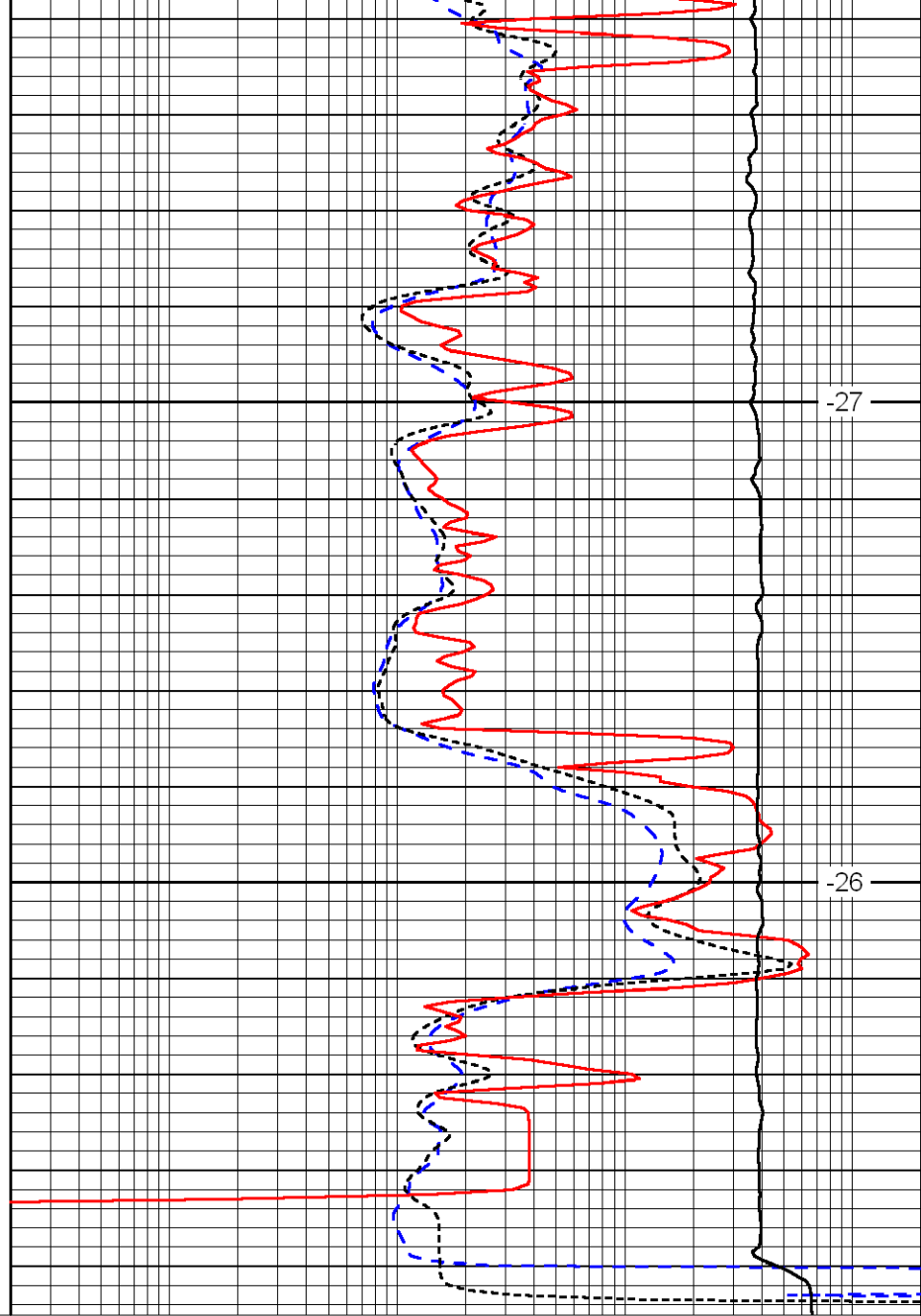
-27

-27

-27



0	Gamma Ray	150
-160	RXO/RT	40
-200	SP	0



0.2	Deep Resistivity	2000
0.2	Medium Resistivity	2000
0.2	Shallow Resistivity	2000
10000	Line Tension	0

LSPD