



Pioneer Energy Services

Microresistivity Log

API No.	15-135-25,465-00-00	
Company	American Warrior, Inc.	
Well	Goodman #2-34	
Field	Unknown	
County	Ness	State
		Kansas
Location	2453' FSL & 1065' FWL	
Sec: 34	Twp: 20 S	Rge: 26 W
Permanent Datum	Ground Level	Elevation 2445
Log Measured From	Kelly Bushing	13 Ft. Above Perm. Datum
Drilling Measured From	Kelly Bushing	
		K.B. 2458 D.F. 2445 G.L. 2445
		Other Services CNL/CDL DIL

Date	8/27/2012
Run Number	Two
Depth Driller	4540
Depth Logger	4540
Bottom Logged Interval	4539
Top Log Interval	3600
Casing Driller	8.625 @ 267
Casing Logger	264
Bit Size	7.875
Type Fluid in Hole	Chemical
Salinity, ppm CL	5.500
Density / Viscosity	9.2 50
pH / Fluid Loss	10.0 10.4
Source of Sample	Flowline
Rm @ Meas. Temp	.80 @ 75
Rmf @ Meas. Temp	.60 @ 75
Rmc @ Meas. Temp	1.08 @ 75
Source of Rmf / Rmc	Charts
Rm @ BHT	.49 @ 123
Operating Rig Time	4 1/2 Hours
Max Rec. Temp. F	123
Equipment Number	91
Location	Hays
Recorded By	K. Bange
Witnessed By	Kevin Timson

<<< Fold Here >>>

All interpretations are opinions based on inferences from electrical or other measurements and we cannot and do not guarantee the accuracy or correctness of any interpretation, and we shall not, except in the case of gross or willful negligence on our part, be liable or responsible for any loss, costs, damages, or expenses incurred or sustained by anyone resulting from any interpretation made by any of our officers, agents or employees. These interpretations are also subject to our general terms and conditions set out in our current Price Schedule.

Comments

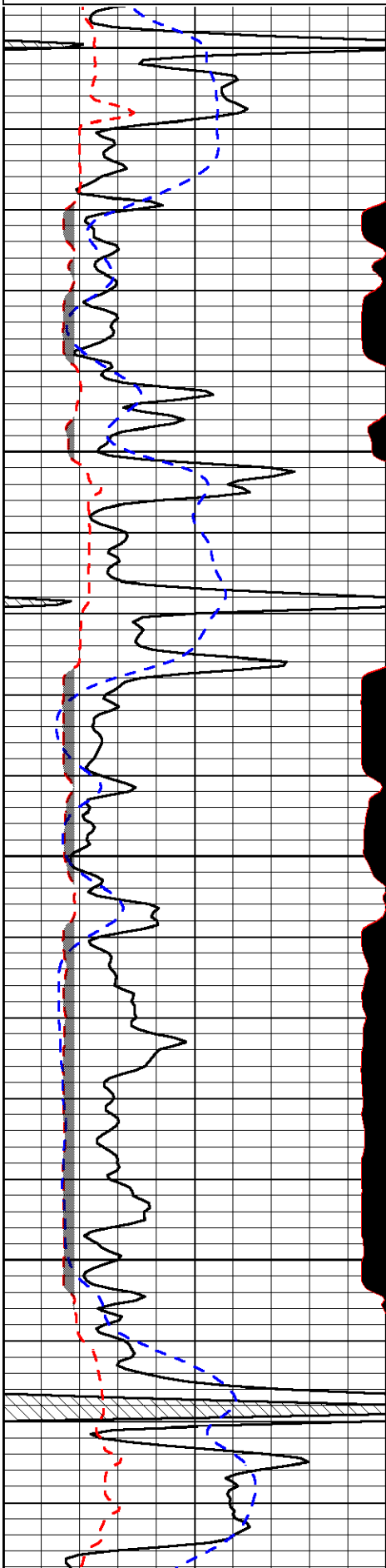
Thank you for using Log-Tech, Inc.
(785) 625-3858

Beeler (E edge),
12 1/2 S, E into

Database File: amwar082712hd.db
 Dataset Pathname: dil/awstack1
 Presentation Format: micro
 Dataset Creation: Tue Aug 28 01:18:35 2012
 Charted by: Depth in Feet scaled 1:240

0	Gamma Ray	150
6	MCAL (GAPI)	16
2.875	Mud Cake (GAPI)	7.875
-200	SP	0

0	Micro Inverse 1 X 1	40
0	Micro Normal 2"	40
10000	Line Weight	0
		LSPD

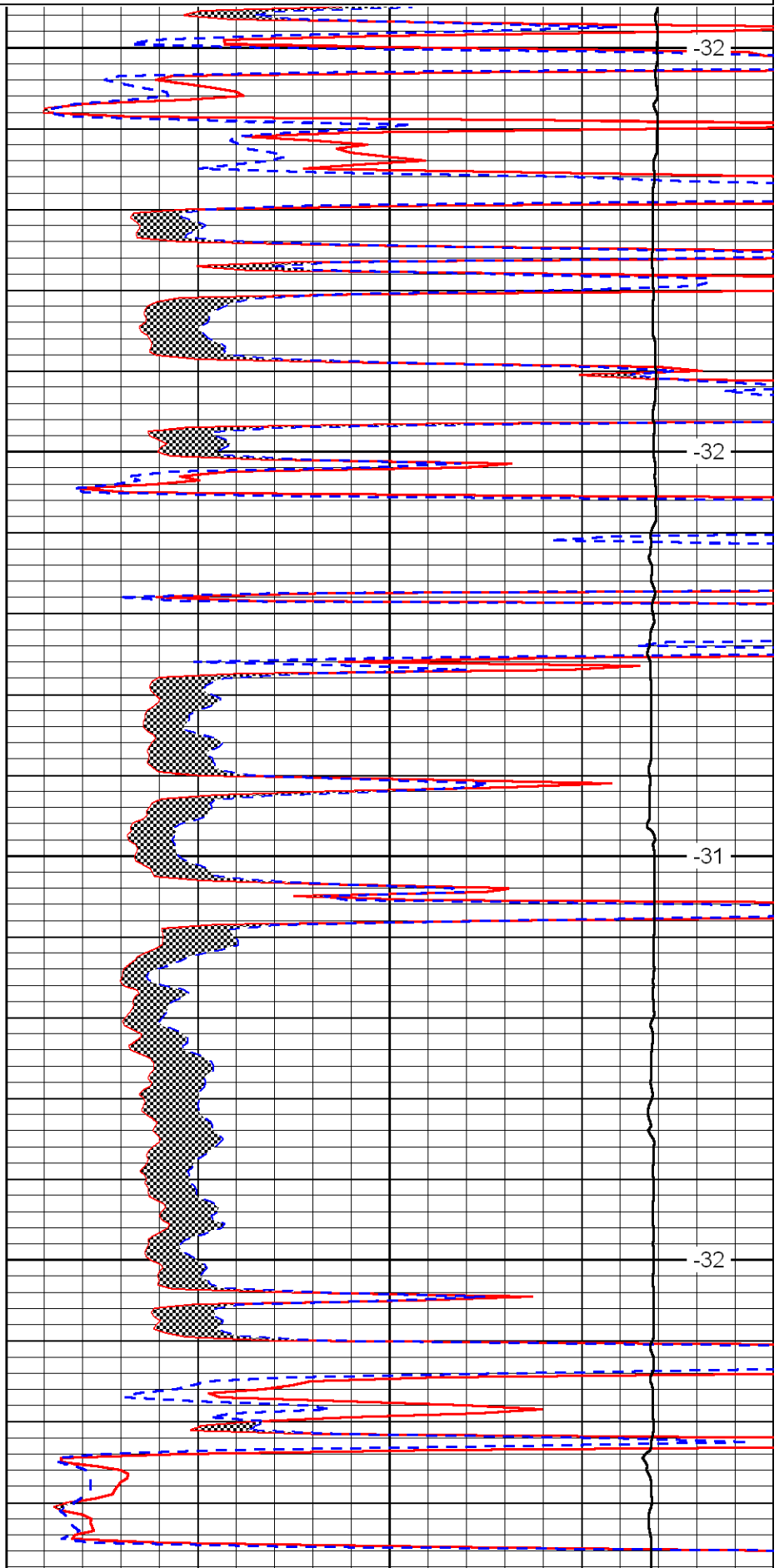


3600

3650

3700

3750

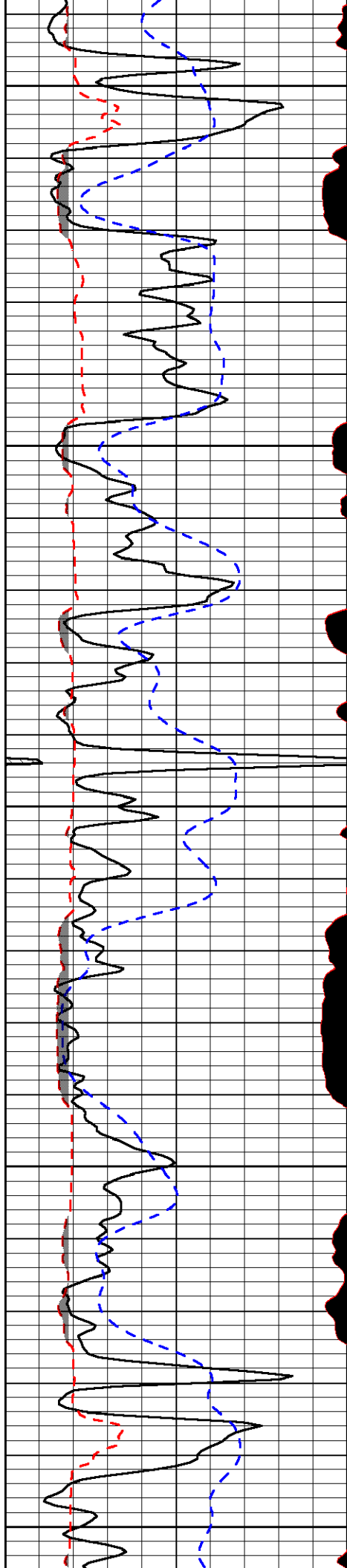


-32

-32

-31

-32



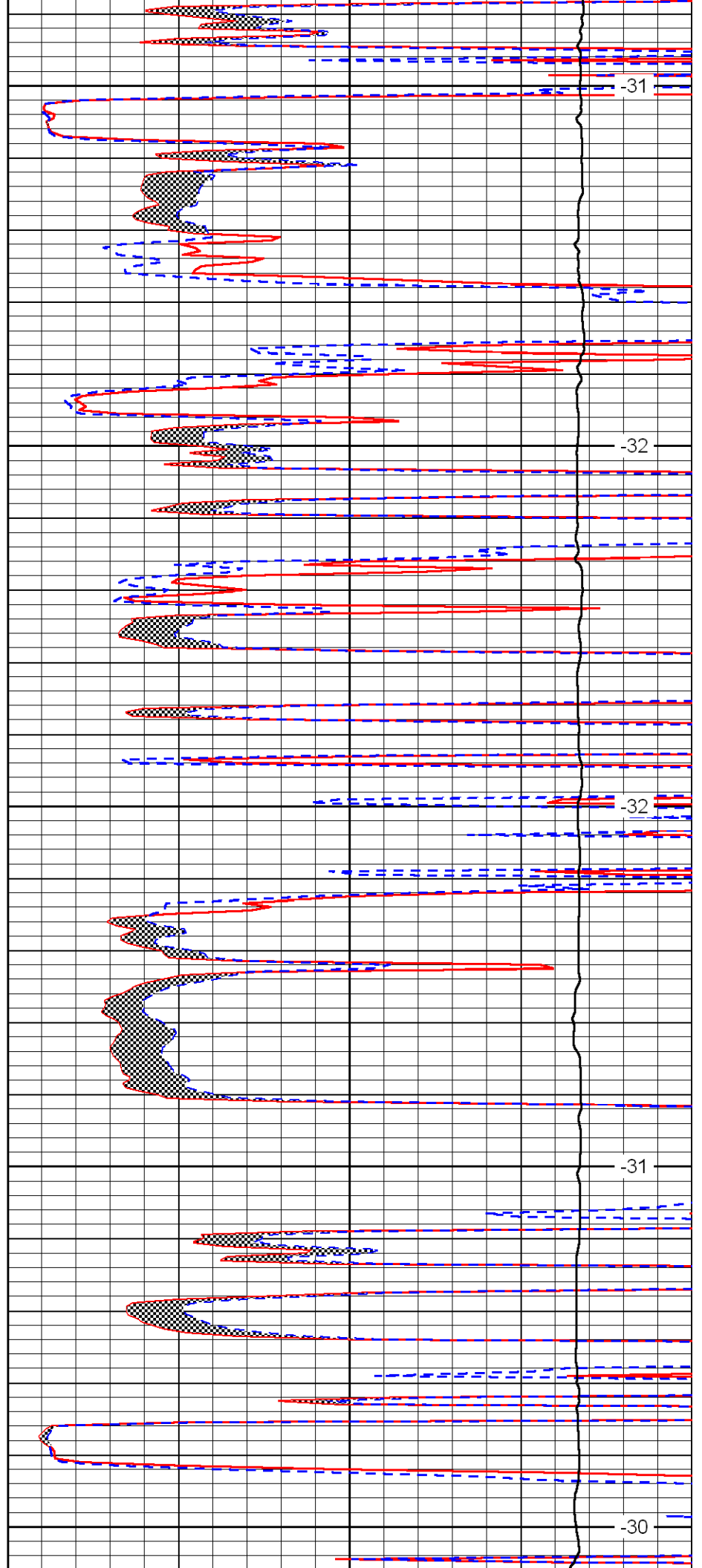
3800

3850

3900

3950

4000



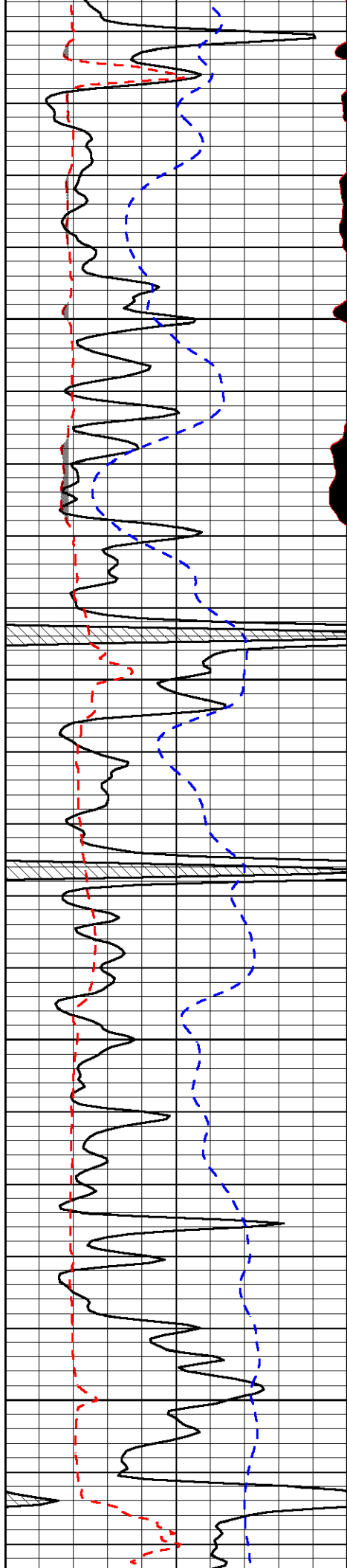
-31

-32

-32

-31

-30

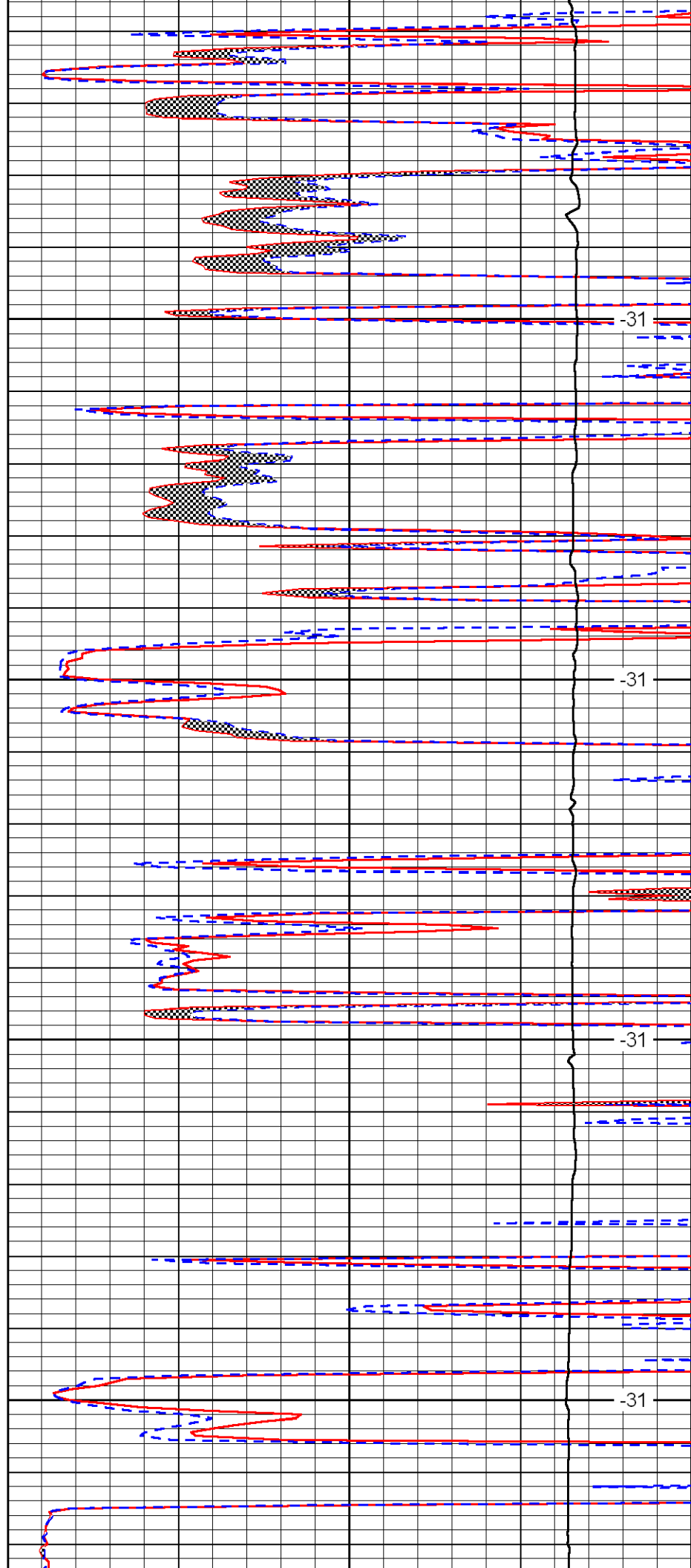


4050

4100

4150

4200

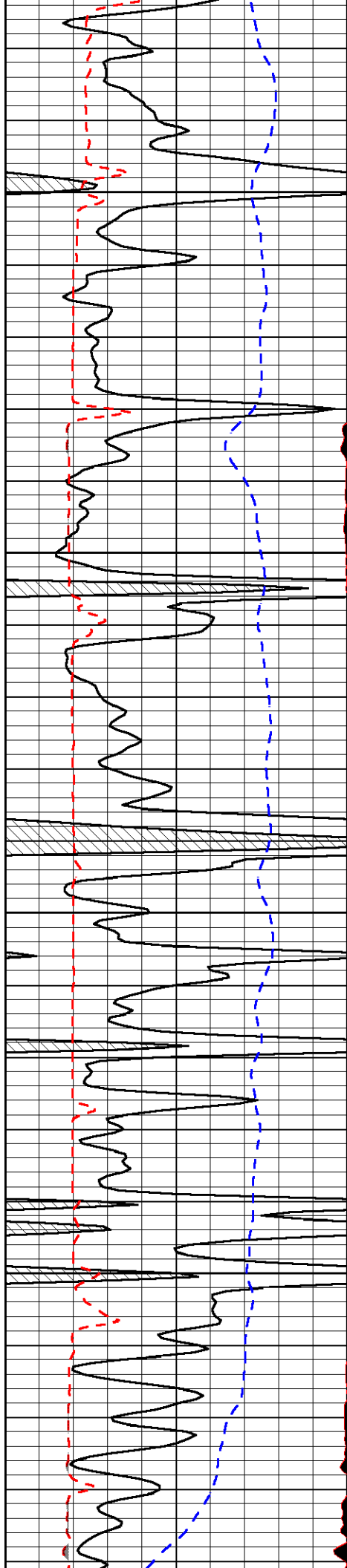


-31

-31

-31

-31

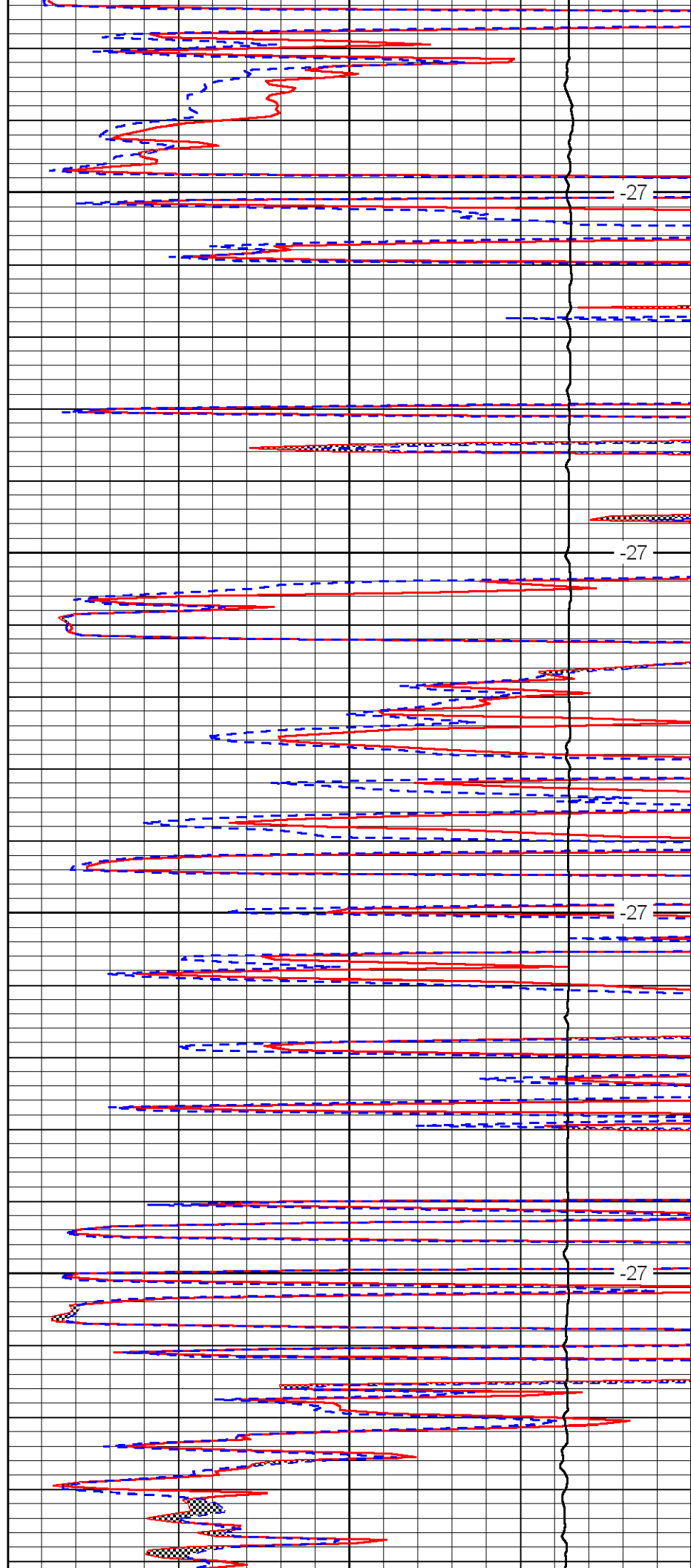


4250

4300

4350

4400

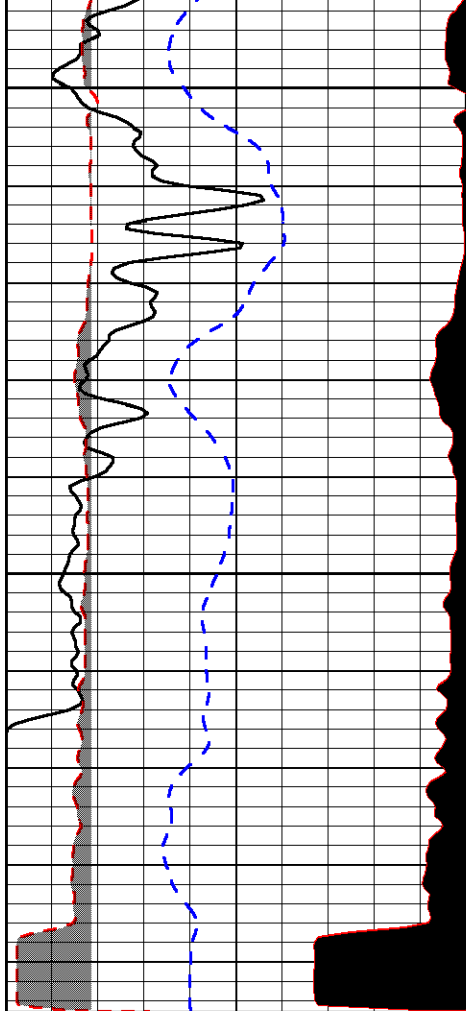


-27

-27

-27

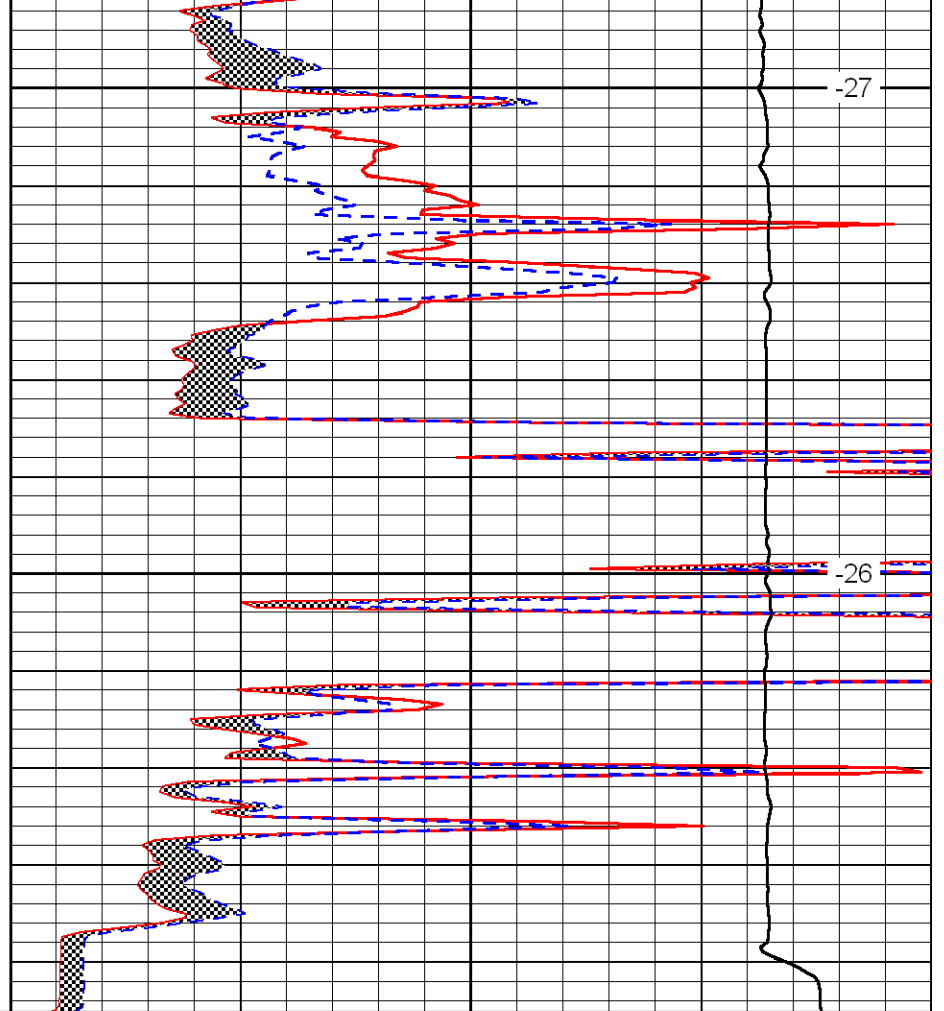
-27



0	Gamma Ray	150
6	MCAL (GAPI)	16
2.875	Mud Cake (GAPI)	7.875
-200	SP	0

4450

4500



0	Micro Inverse 1 X 1	40
0	Micro Normal 2''	40
10000	Line Weight	0

-27

-26

LSPD