



Pioneer Energy Services

Microresistivity Log

15-163-24061-00-00

API No.

Company **American Warrior, Inc.**
 Well **Hammerschmidt #1-11**
 Field **Unnamed**
 County **Rooks** State **Kansas**

Location **780' FNL & 2105' FEL**
 Sec: **11** Twp: **10S** Rge: **19W**

Other Services
 CNL/CDL
 DIL/BHCS

Permanent Datum **Ground Level** Elevation **2136**
 Log Measured From **Kelly Bushing** 10 Ft. Above Perm. Datum
 Drilling Measured From **Kelly Bushing**

Elevation
 K.B. 2146
 D.F. 2136
 G.L. 2136

Date	9/3/2012
Run Number	Two
Depth Driller	3730
Depth Logger	3737
Bottom Logged Interval	3736
Top Log Interval	2000
Casing Driller	8.625 @ 212
Casing Logger	212
Bit Size	7.875
Type Fluid in Hole	Chemical
Salinity, ppm CL	3900
Density / Viscosity	9.3 58
pH / Fluid Loss	10.5 7.8
Source of Sample	Flowline
Rm @ Meas. Temp	0.80 @ 85
Rmf @ Meas. Temp	0.60 @ 85
Rmc @ Meas. Temp	1.08 @ 85
Source of Rmf / Rmc	Charts
Rm @ BHT	0.59 @ 115
Operating Rig Time	5 Hours
Max Rec. Temp. F	115
Equipment Number	91
Location	Hays
Recorded By	D. Schmidt
Witnessed By	Jeff Lawler

<<< Fold Here >>>

All interpretations are opinions based on inferences from electrical or other measurements and we cannot and do not guarantee the accuracy or correctness of any interpretation, and we shall not, except in the case of gross or willful negligence on our part, be liable or responsible for any loss, costs, damages, or expenses incurred or sustained by anyone resulting from any interpretation made by any of our officers, agents or employees. These interpretations are also subject to our general terms and conditions set out in our current Price Schedule.

Comments

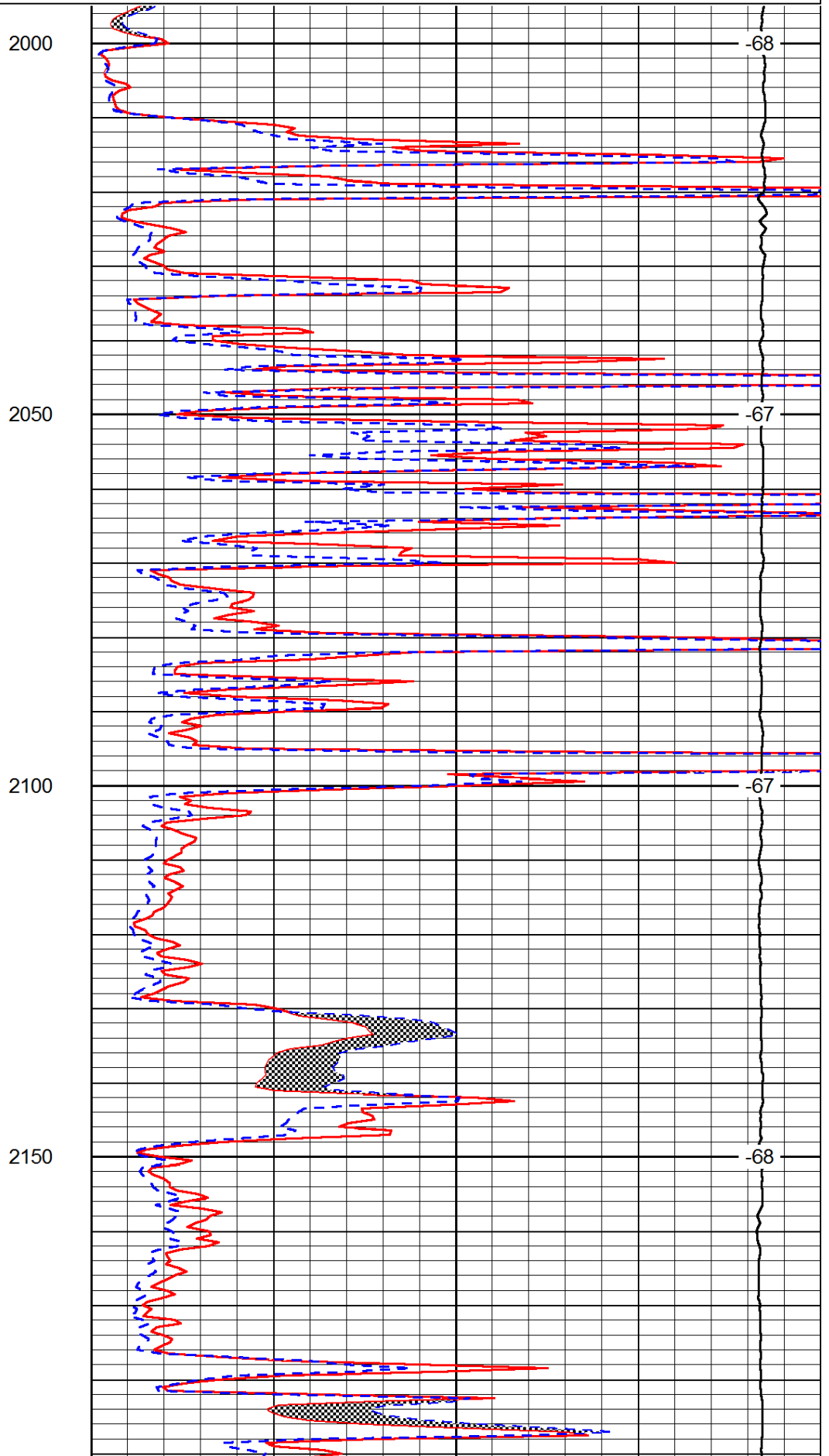
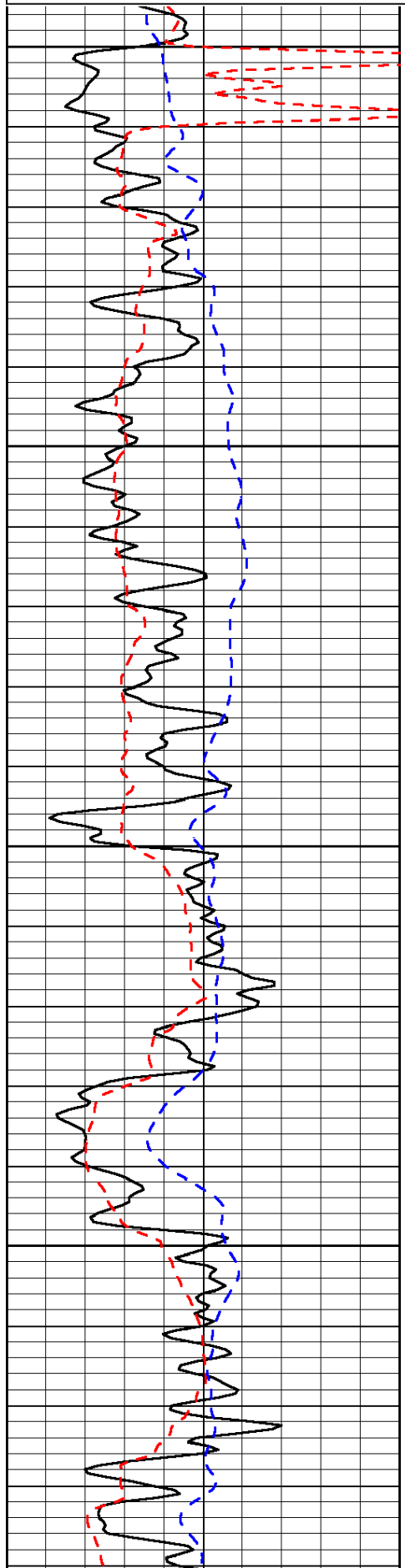
Thank you for using Pioneer Energy Services
 www.pioneerres.com
 785 625 3858
 Plainville (Hwy 183 & 18),
 5 1/2 West to 12 Rd, 2 South,
 West into

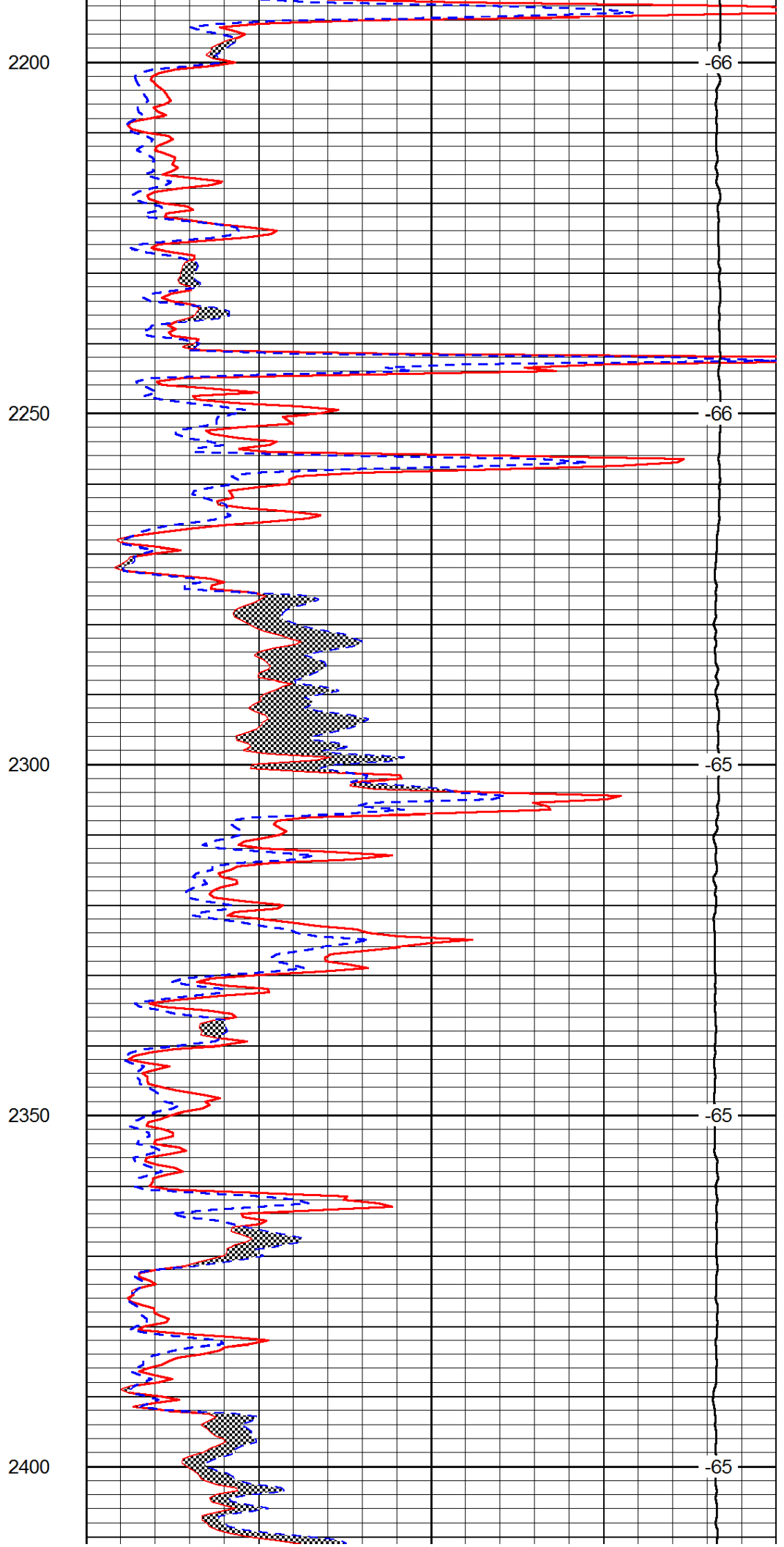
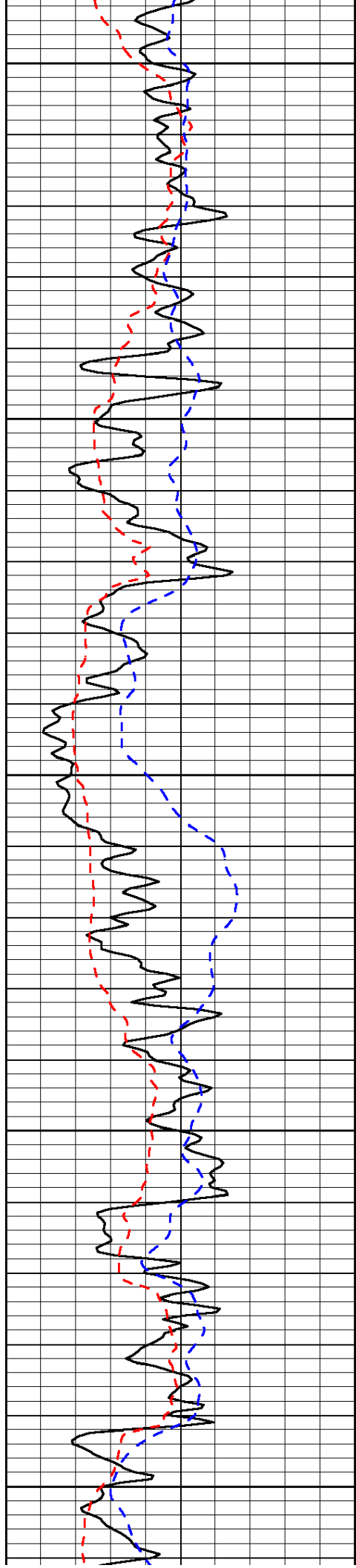
Database File: c:\warrior\data\amwar_hammerschmidt #1-11\amwar_090312hd.db
 Dataset Pathname: dil/awstack
 Presentation Format: micro
 Dataset Creation: Mon Sep 03 21:45:26 2012
 Charted by: Depth in Feet scaled 1:240

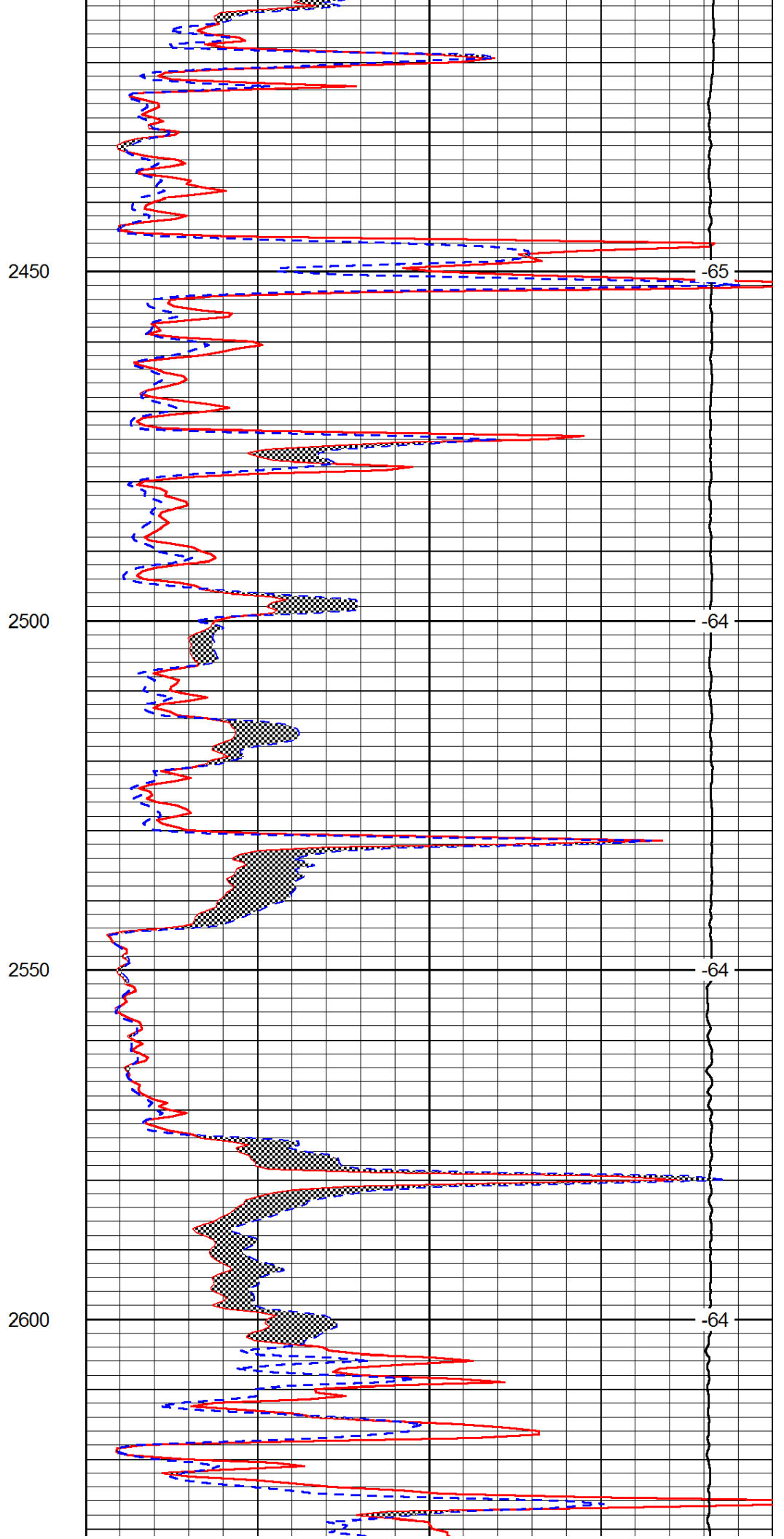
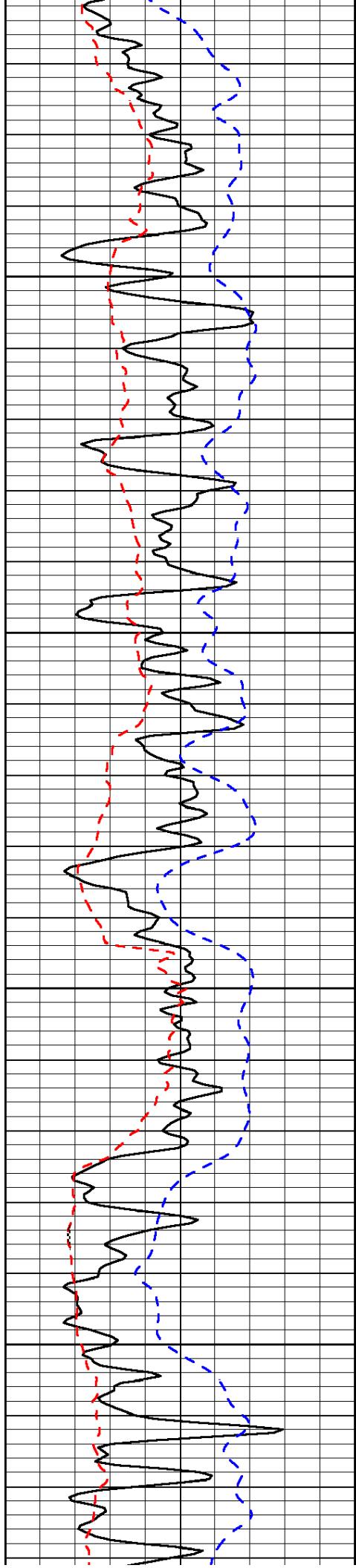
0	Gamma Ray	150
6	Micro Log Caliper (GAPI)	16
-200	SP (mV)	0

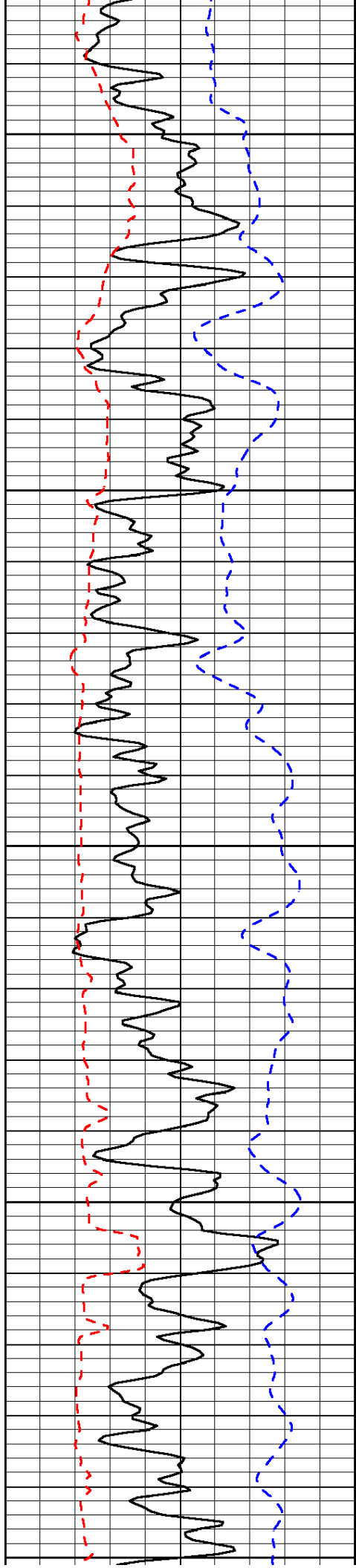
0	Micro Inverse 1 X 1	40
0	Micro Normal 2"	40
15000	Line Weight	0

LSPD









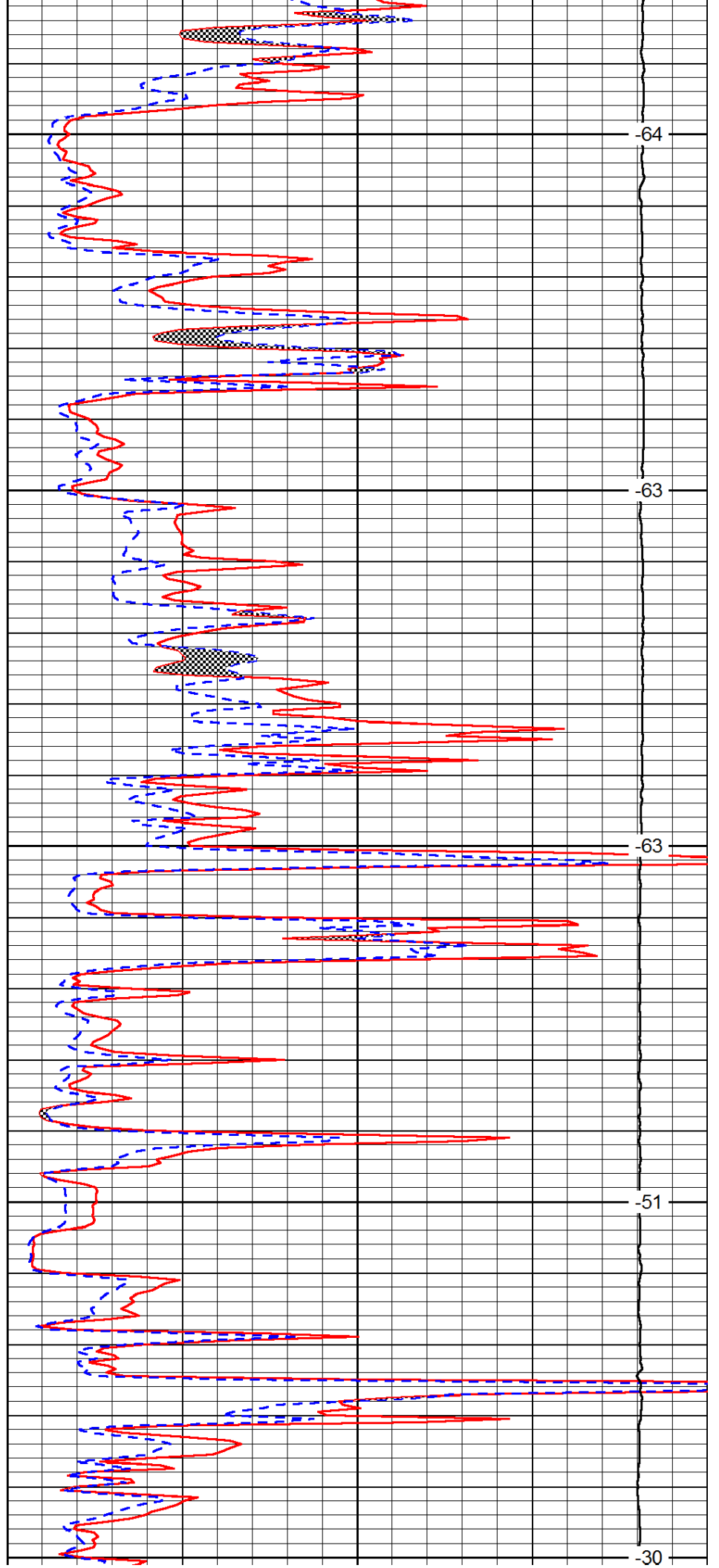
2650

2700

2750

2800

2850



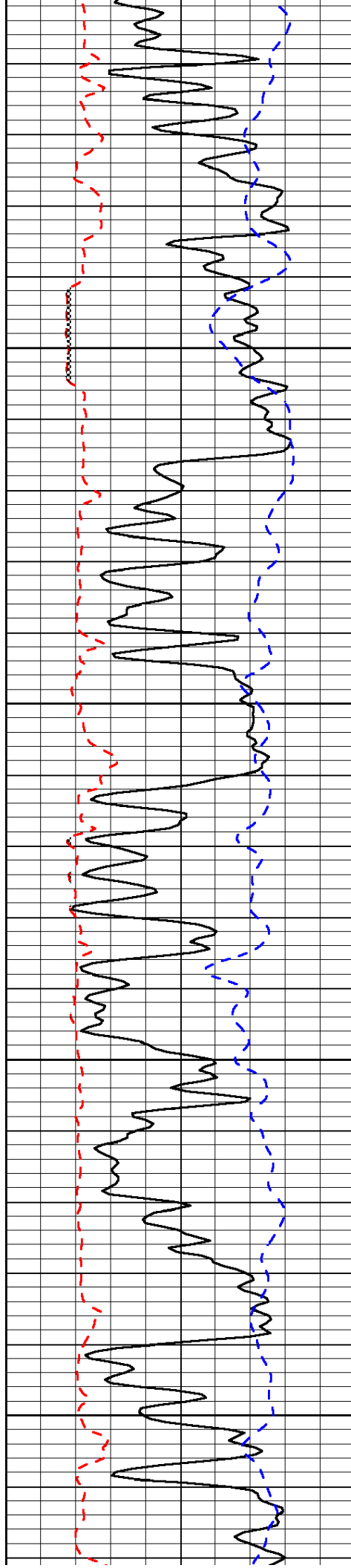
-64

-63

-63

-51

-30

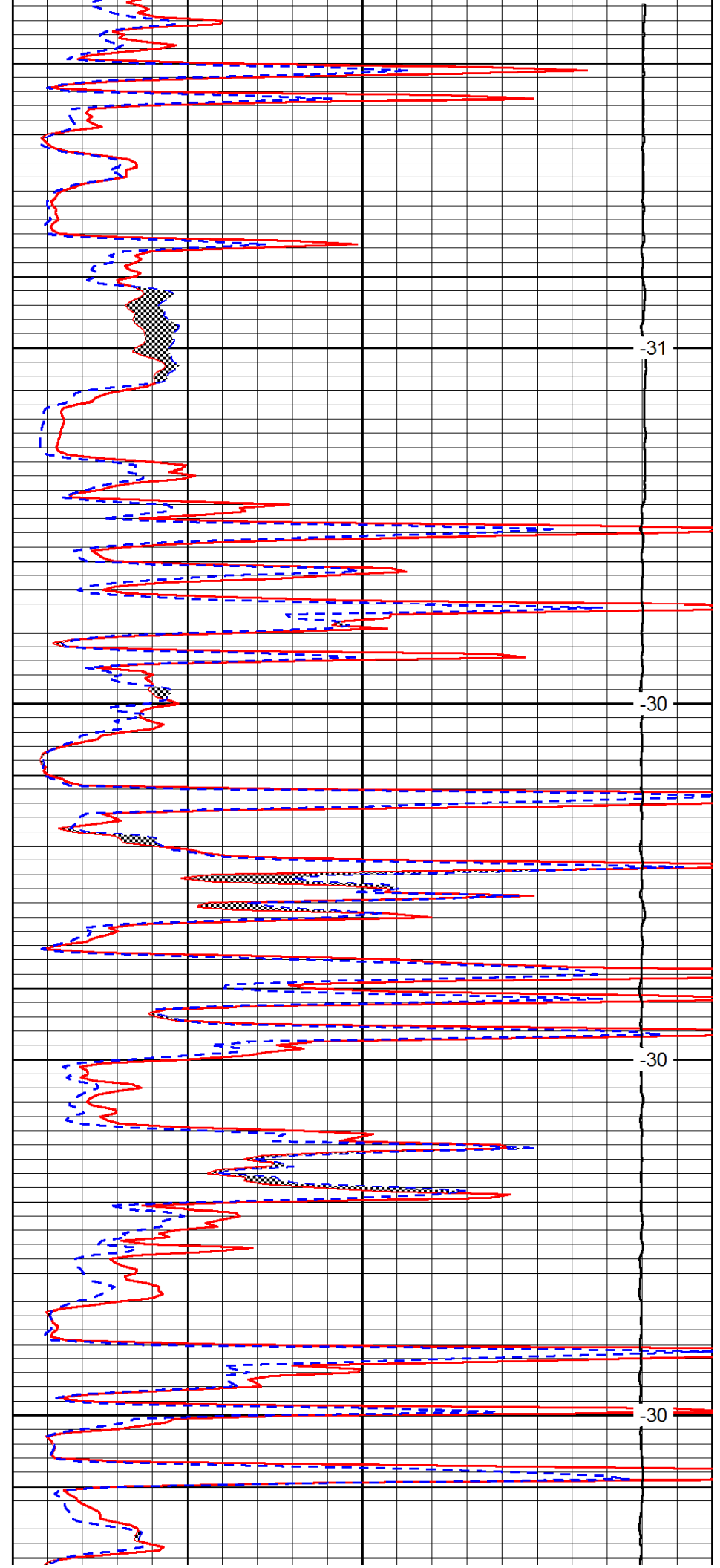


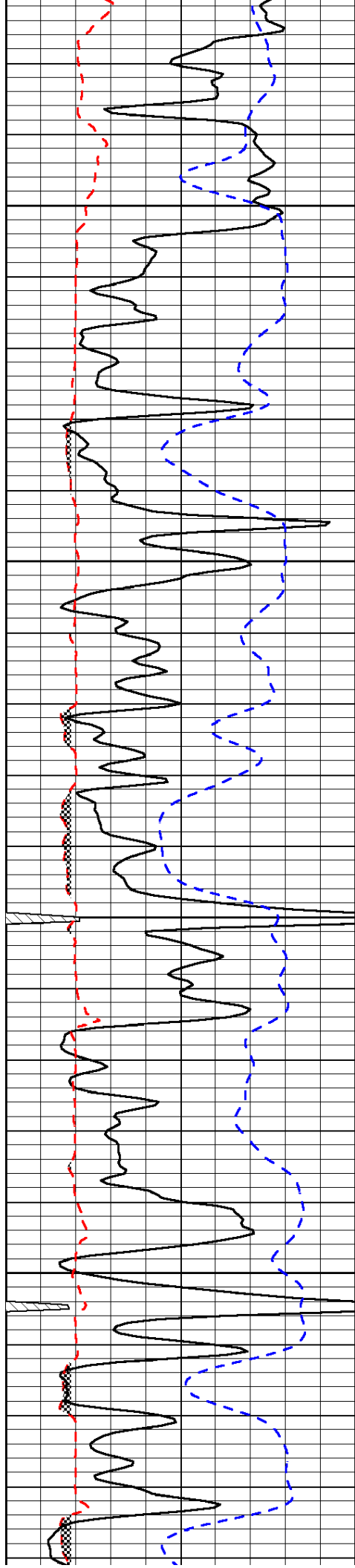
2900

2950

3000

3050



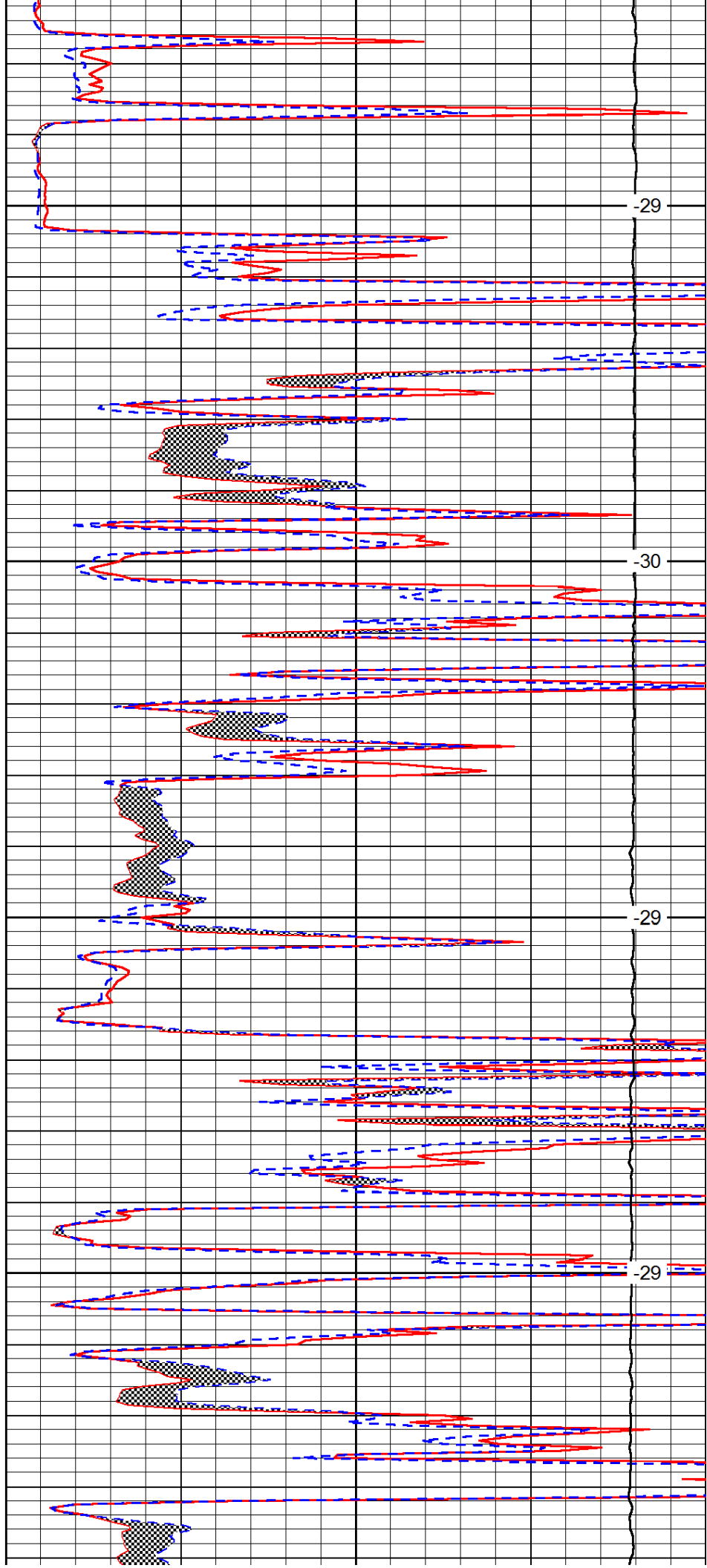


3100

3150

3200

3250

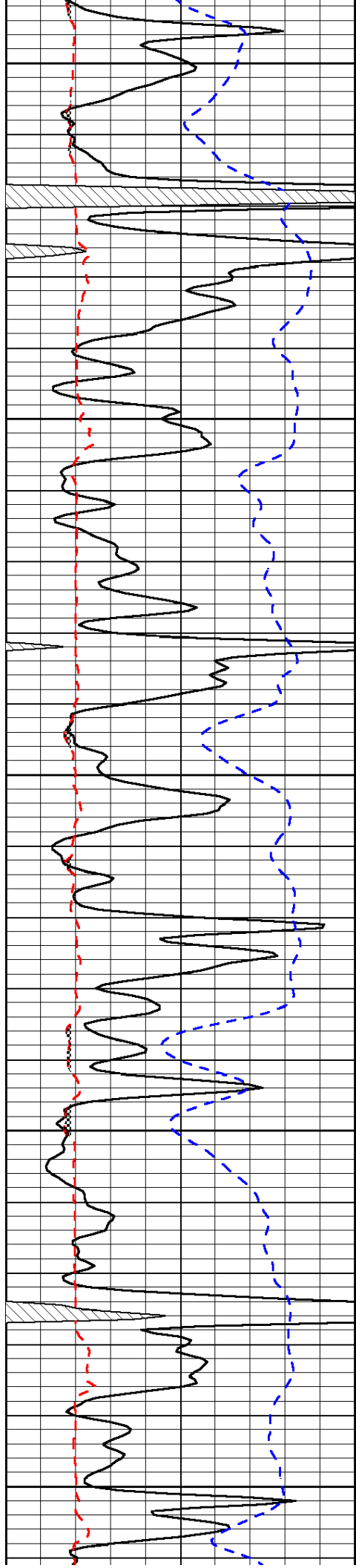


-29

-30

-29

-29



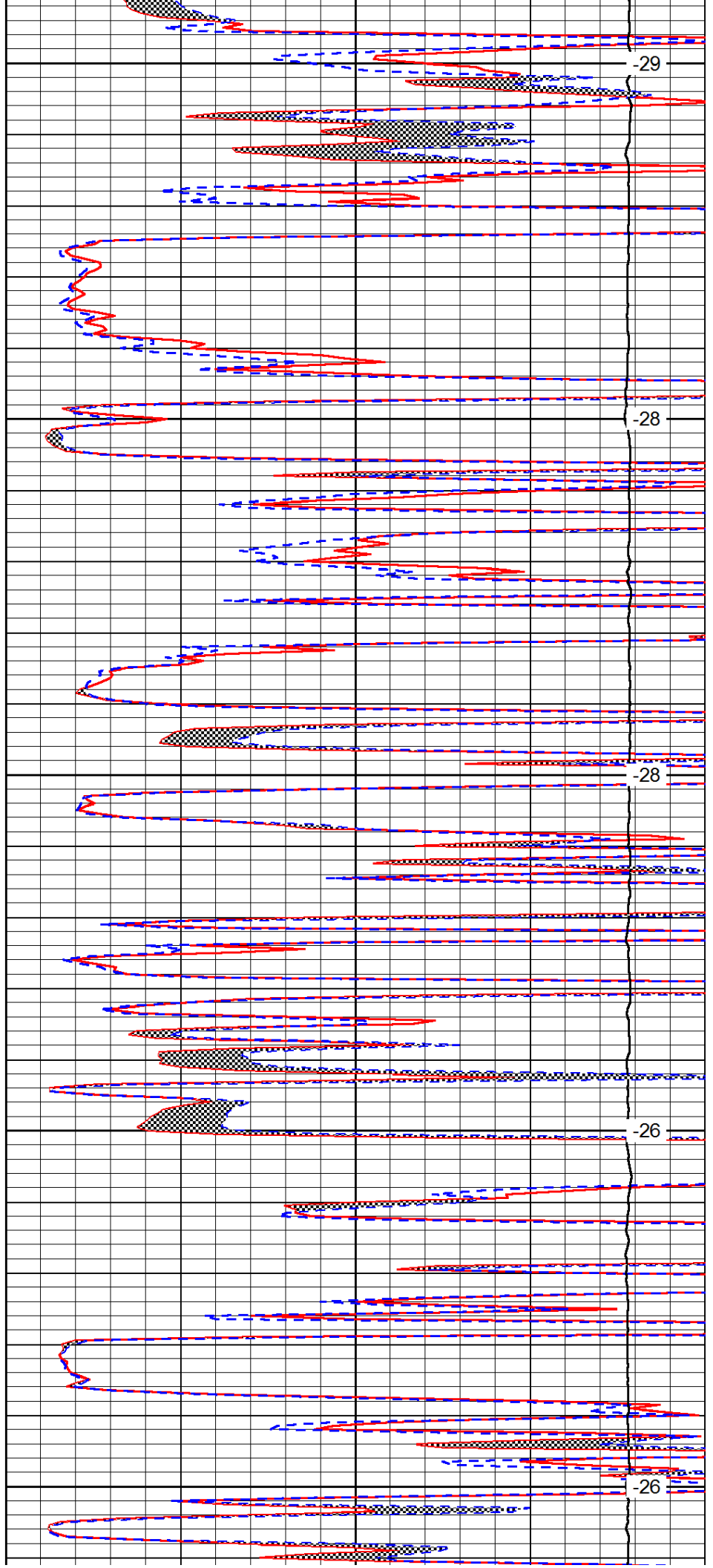
3300

3350

3400

3450

3500



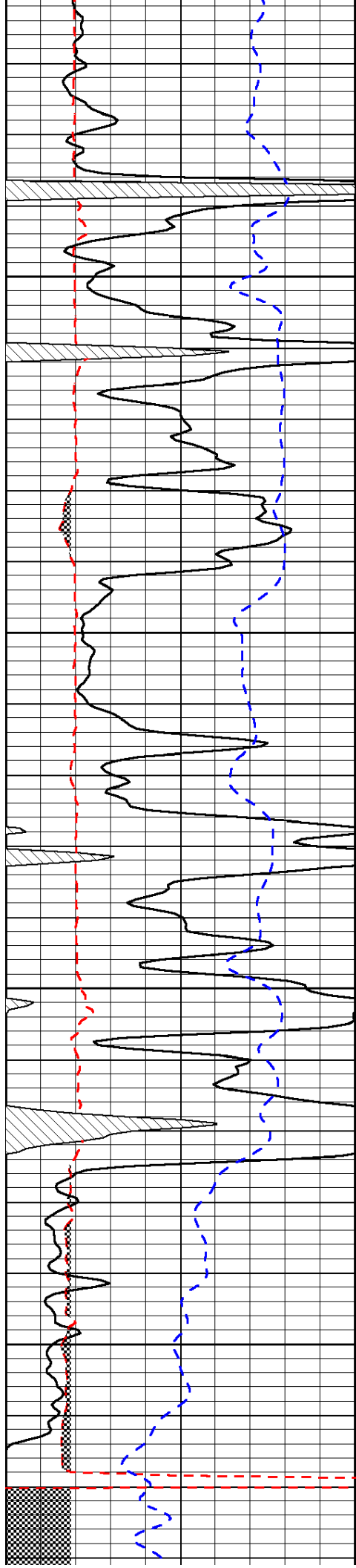
-29

-28

-28

-26

-26

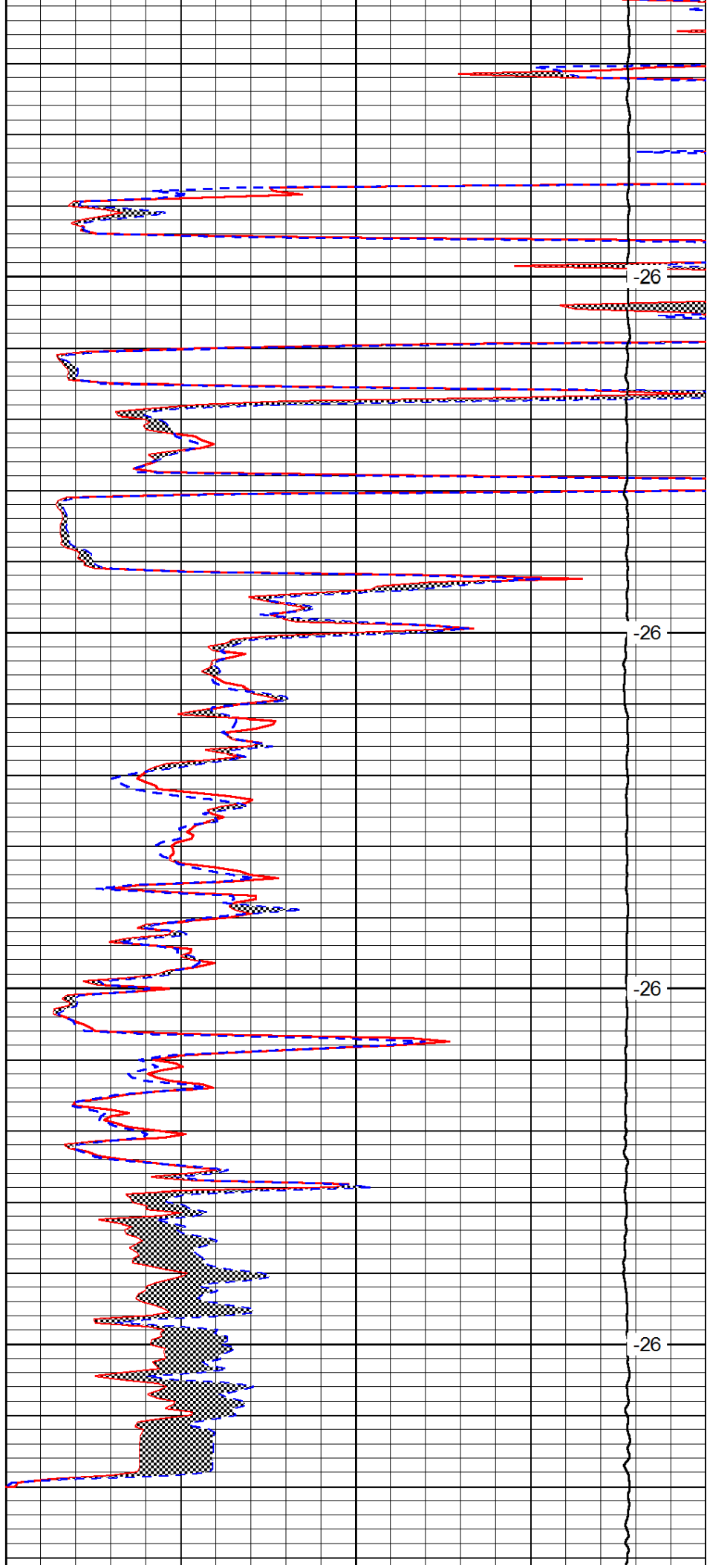


3550

3600

3650

3700

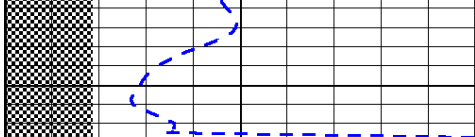


-26

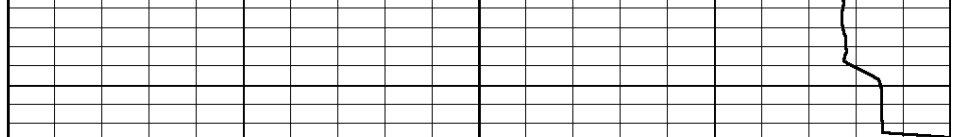
-26

-26

-26



0	Gamma Ray	150
6	Micro Log Caliper (GAPI)	16
-200	SP (mV)	0



0	Micro Inverse 1 X 1	40
0	Micro Normal 2"	40
15000	Line Weight	0

LSPD