



Pioneer Energy Services

Dual Induction Log

15-163-24061-00-00

API No.

Company American Warrior, Inc.

Well Hammerschmidt #1-11

Field Unnamed

County Rocks State

Kansas

Location 780' FNL & 2105' FEL

Other Services
CNL/CDL
MEL/BHCS

Sec: 11 Twp: 10S Rge: 19W

Permanent Datum Ground Level Elevation 2136

Log Measured From Kelly Bushing 10 Ft. Above Perm. Datum

Drilling Measured From Kelly Bushing

Elevation
K.B. 2146
D.F.
G.L. 2136

Date 9/3/2012

Run Number One

Depth Driller 3730

Depth Logger 3737

Bottom Logged Interval 3736

Top Log Interval 200

Casing Driller 8.625 @ 212

Casing Logger 212

Bit Size 7.875

Type Fluid in Hole Chemical

Salinity, ppm CL 3900

Density / Viscosity 9.3 58

pH / Fluid Loss 10.5 7.8

Source of Sample Flowline

Rm @ Meas. Temp 0.80 @ 85

Rmf @ Meas. Temp 0.60 @ 85

Rmc @ Meas. Temp 1.08 @ 85

Source of Rmf / Rmc Charts

Rm @ BHT 0.59 @ 115

Operating Rig Time 5 Hours

Max Rec. Temp. F 115

Equipment Number 91

Location Hays

Recorded By D. Schmidt

Witnessed By Jeff Lawler

<<< Fold Here >>>

All interpretations are opinions based on inferences from electrical or other measurements and we cannot and do not guarantee the accuracy or correctness of any interpretation, and we shall not, except in the case of gross or willful negligence on our part, be liable or responsible for any loss, costs, damages, or expenses incurred or sustained by anyone resulting from any interpretation made by any of our officers, agents or employees. These interpretations are also subject to our general terms and conditions set out in our current Price Schedule.

Comments

Thank you for using Pioneer Energy Services
www.pioneerenergy.com
 785 625 3858
 Plainville (Hwy 183 & 18),
 5 1/2 West to 12 Rd, 2 South,
 West into

Database File: c:\warrior\data\amwar_hammerschmidt #1-11\amwar_090312hd.db
 Dataset Pathname: dil/awstack
 Presentation Format: dil2in
 Dataset Creation: Mon Sep 03 21:45:26 2012
 Charted by: Depth in Feet scaled 1:600

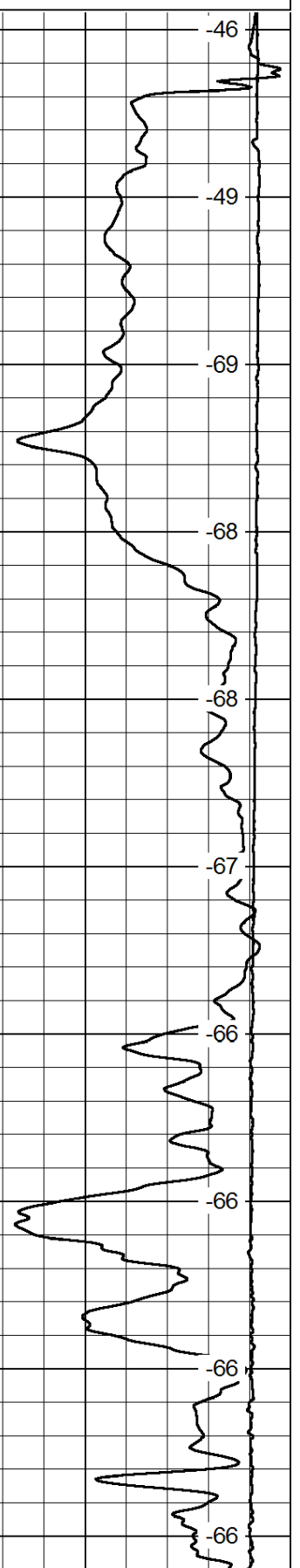
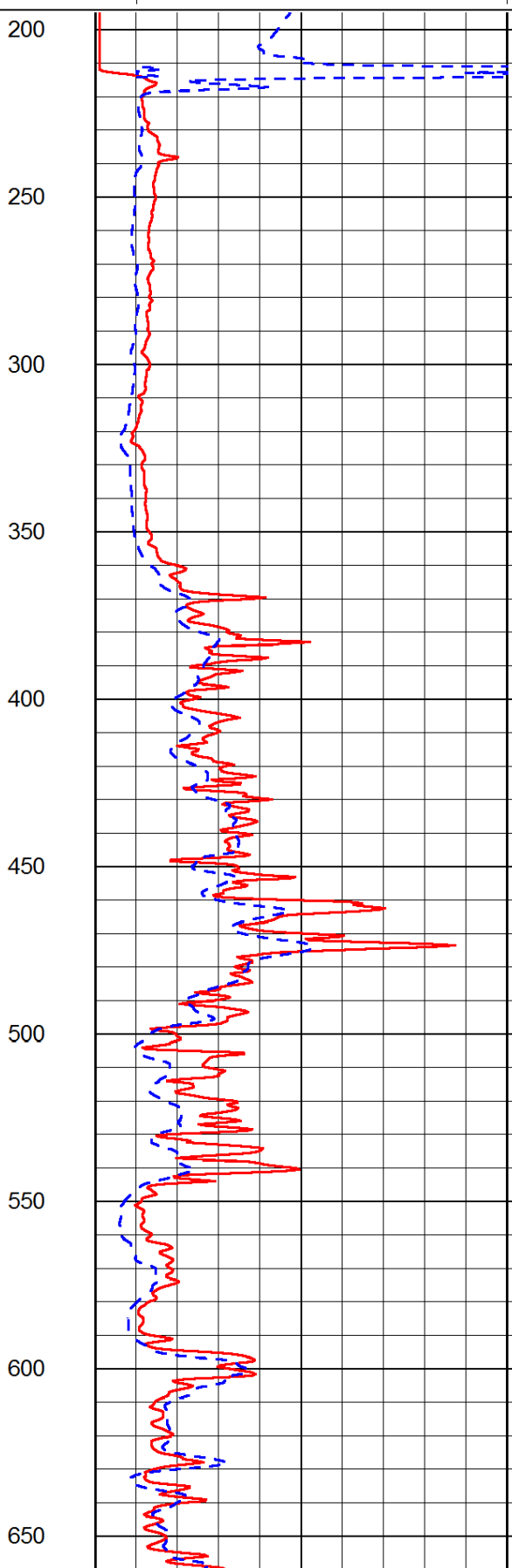
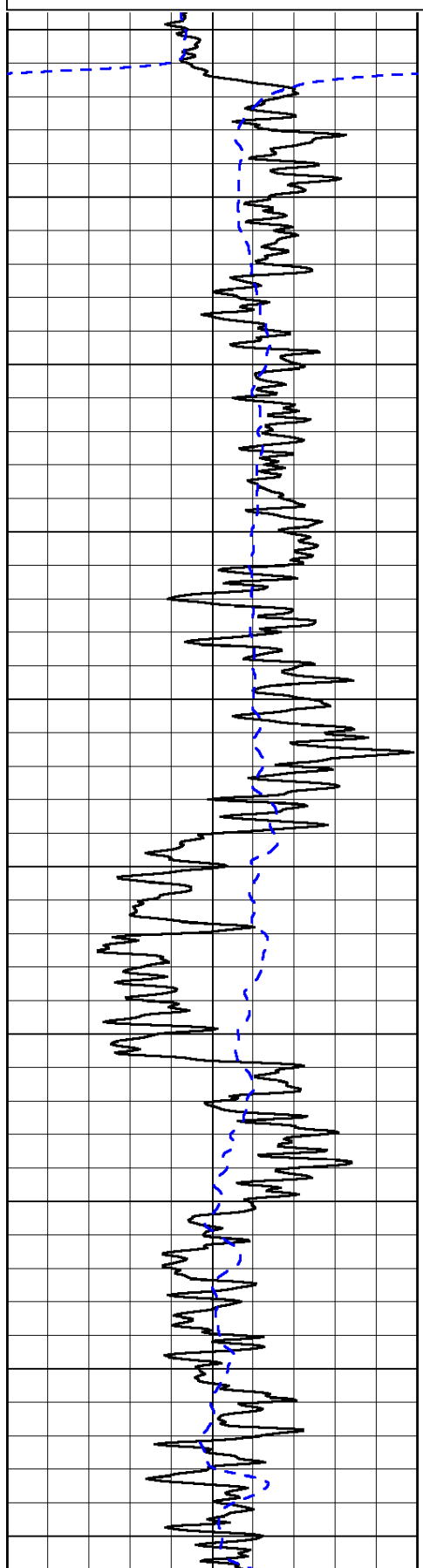
0	Gamma Ray	150
-200	SP (mV)	0

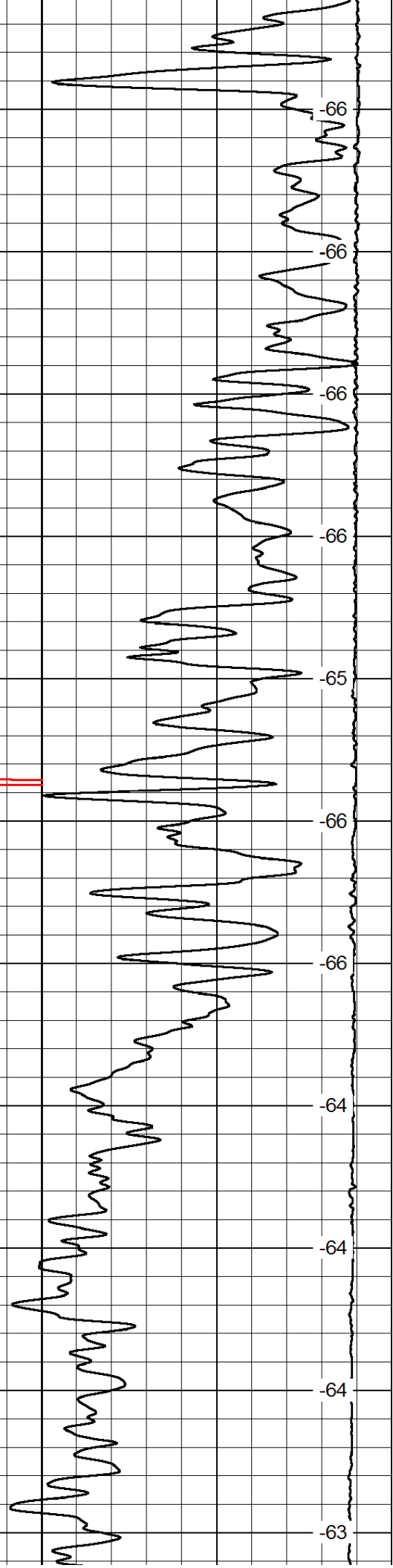
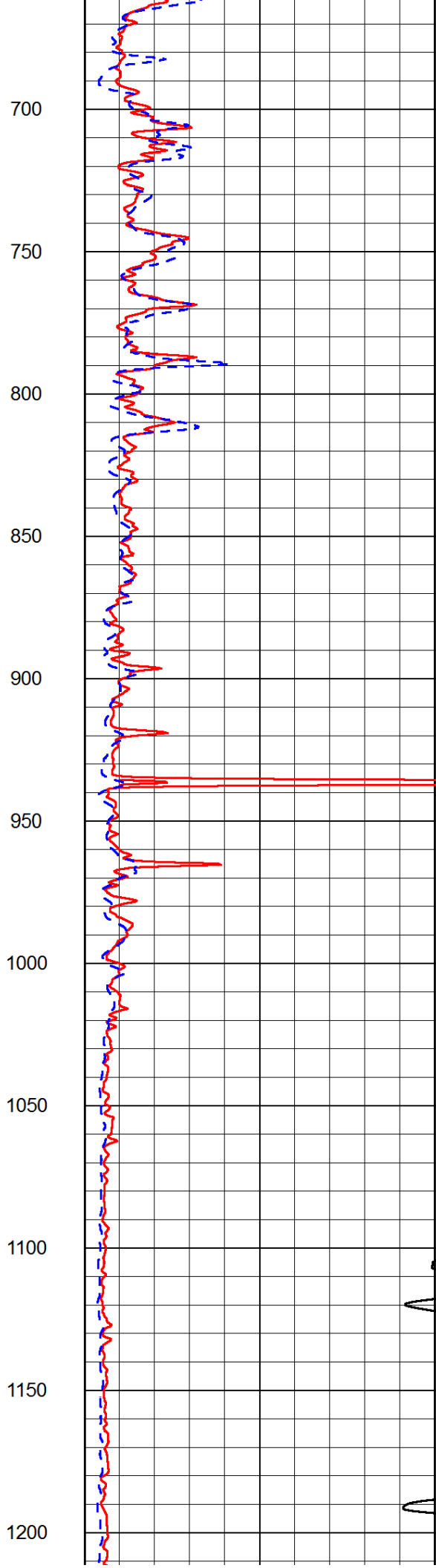
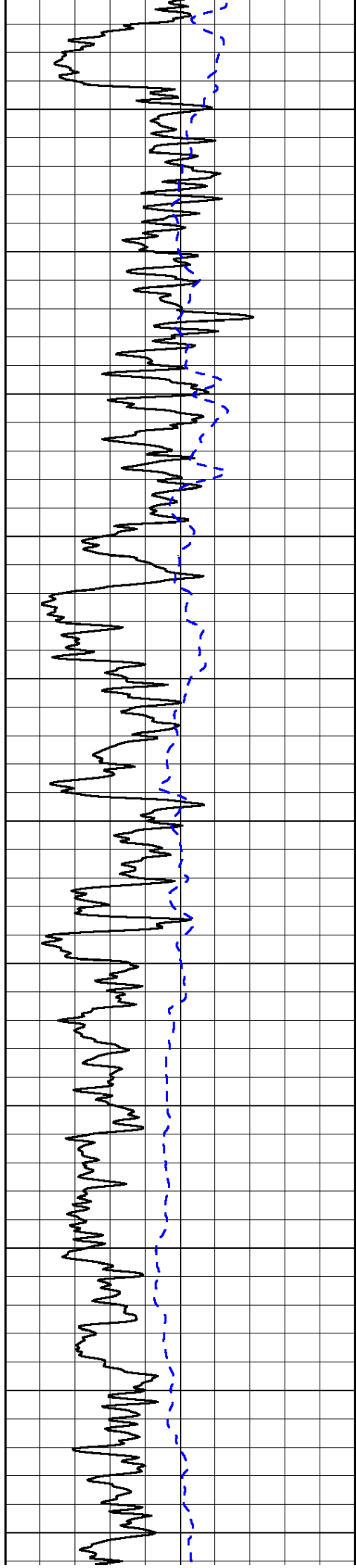
0	Shallow Resistivity	50
0	Deep Resistivity	50

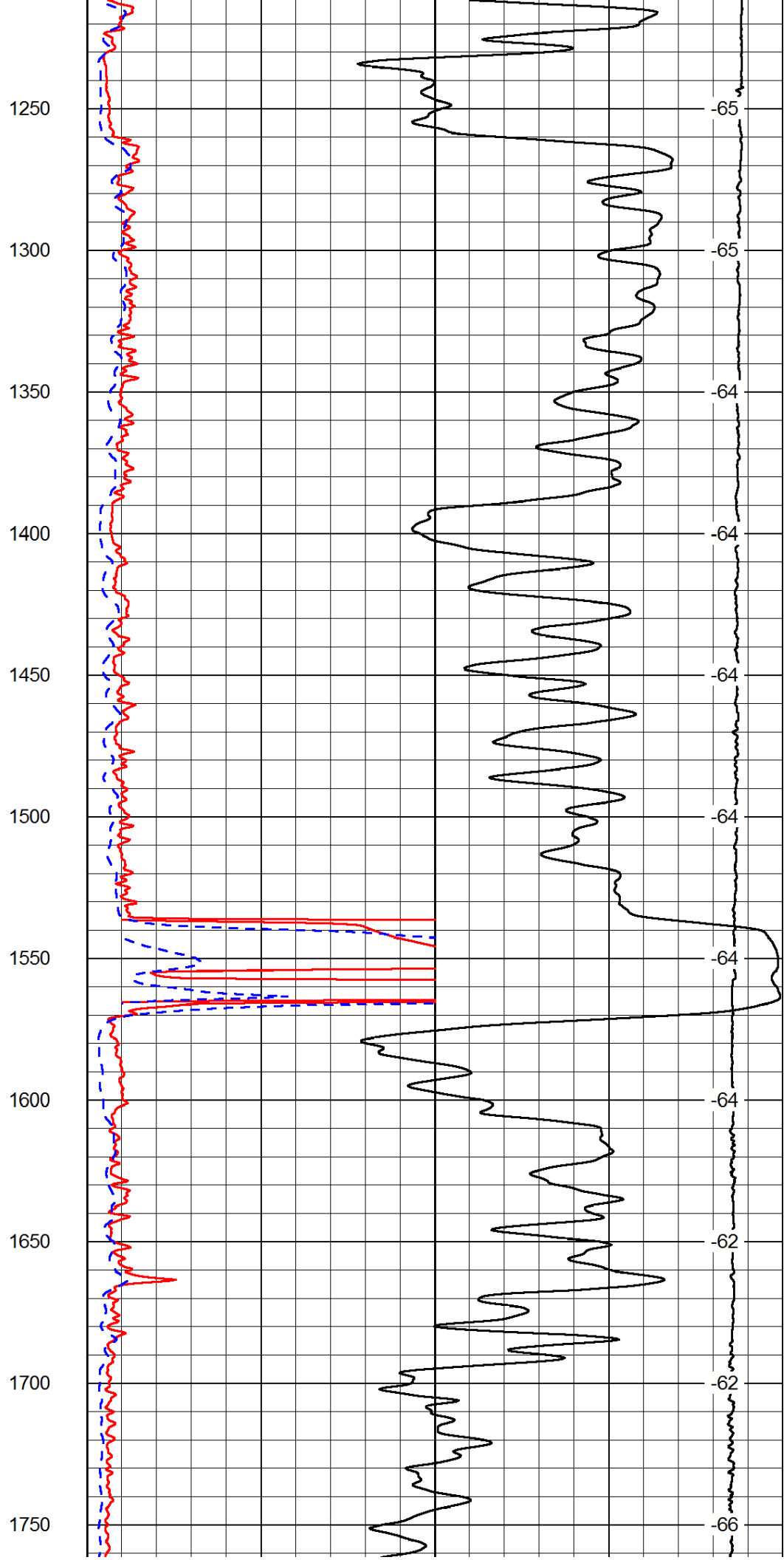
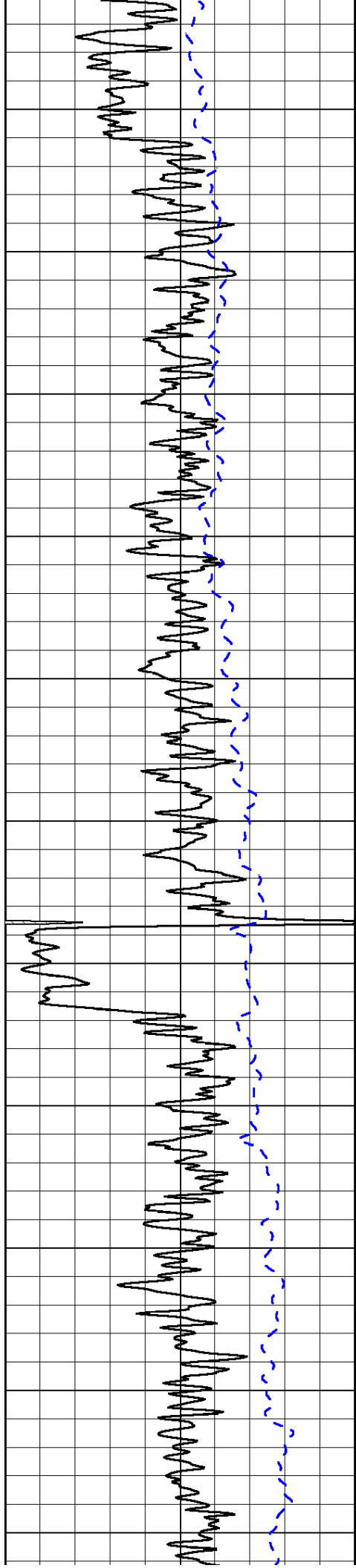
LSPD

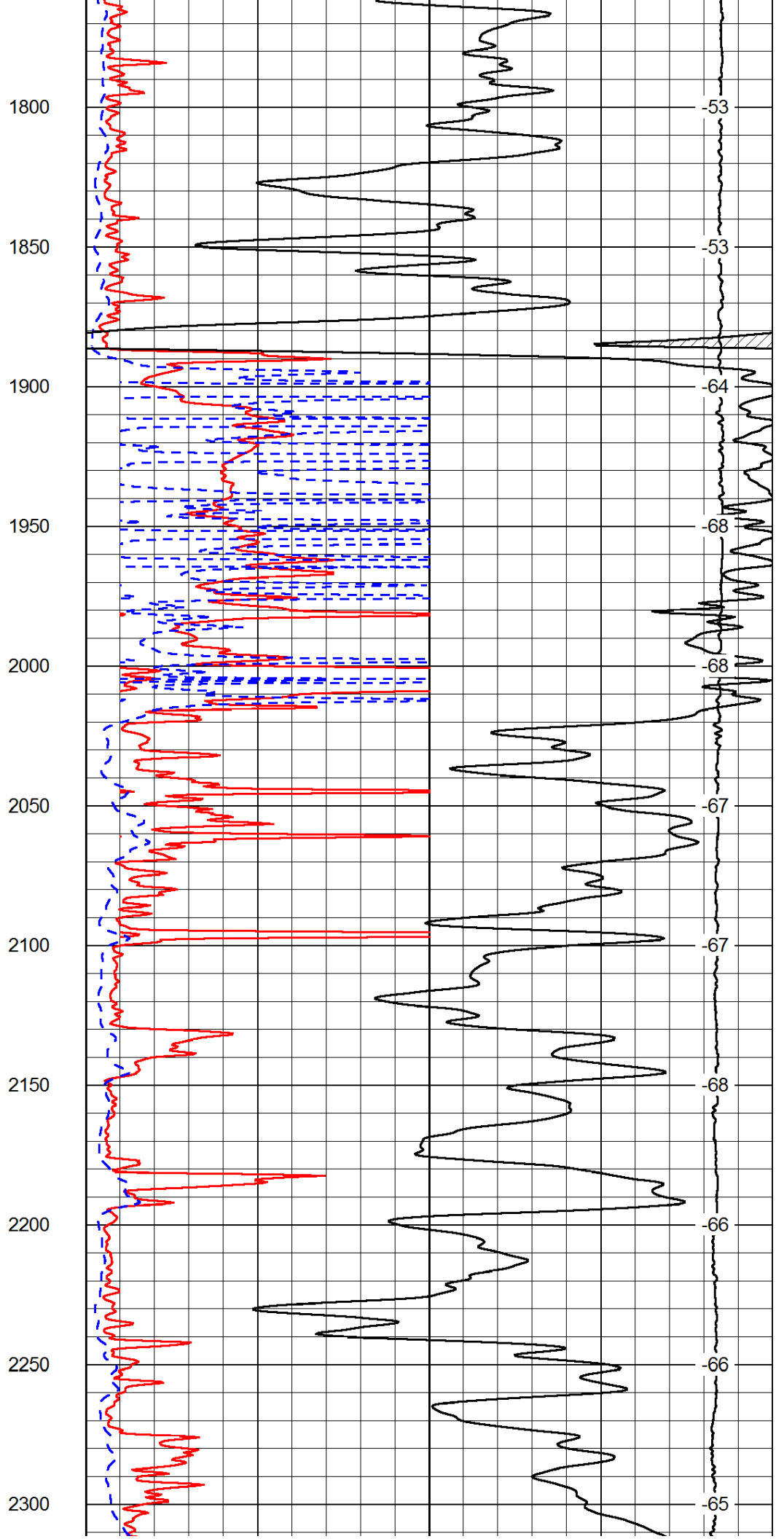
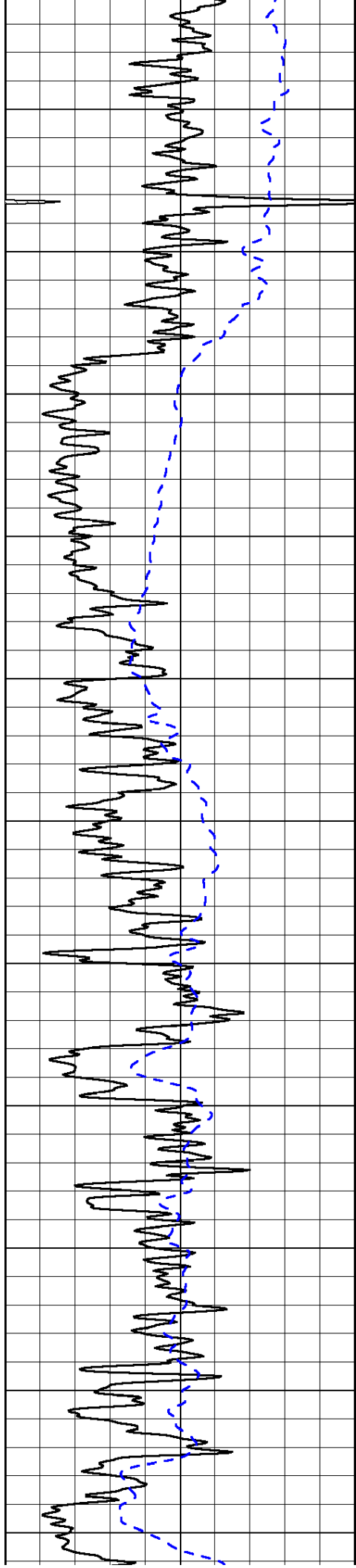
1000	Conductivity	0
15000	Line Tension	0

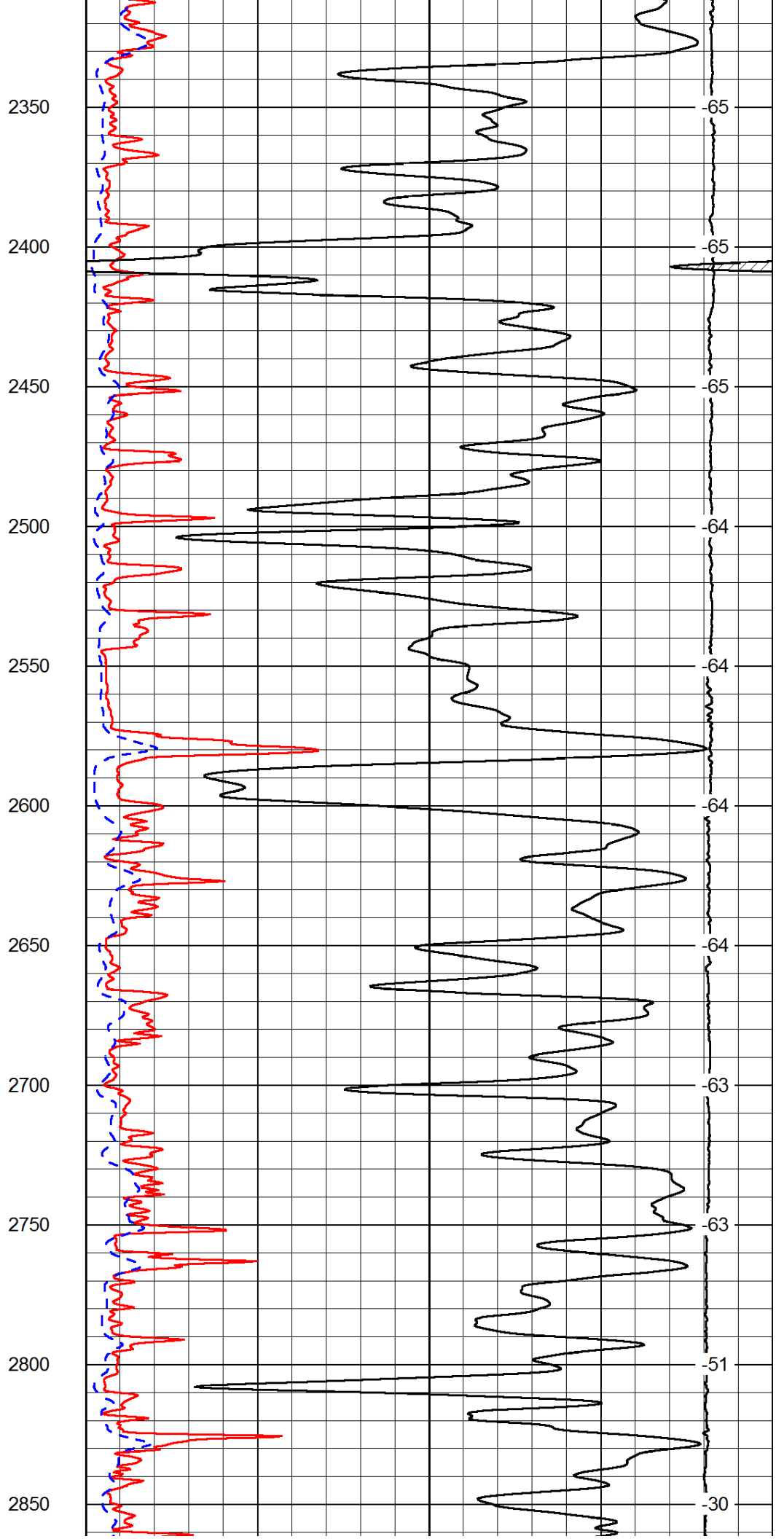
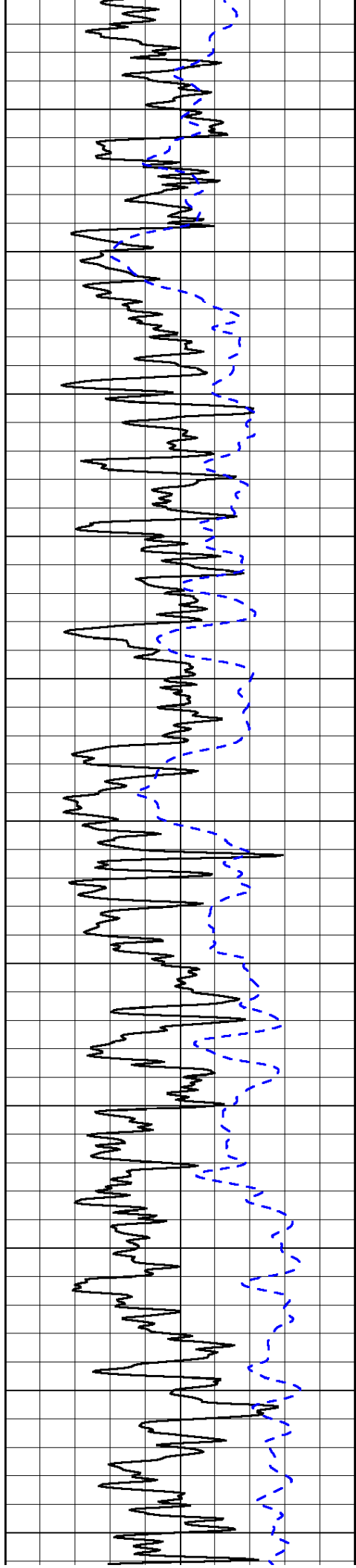
50	Shallow Resistivity	500
50	Deep Resistivity	500

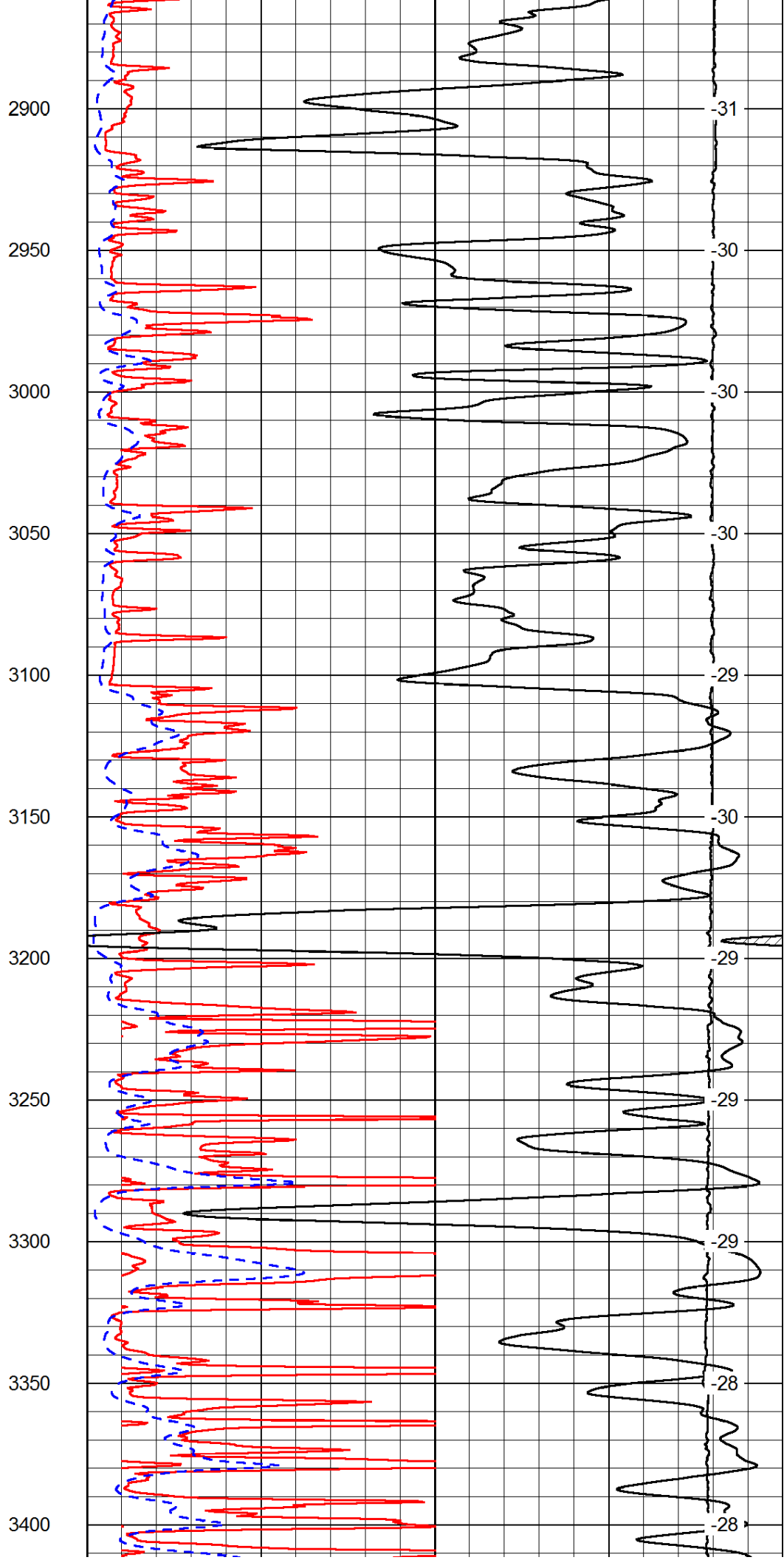
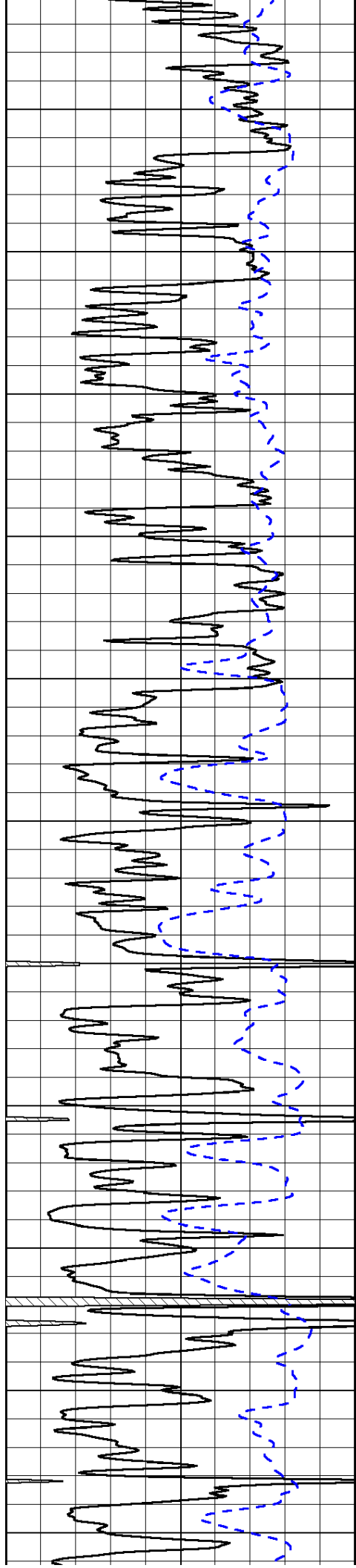


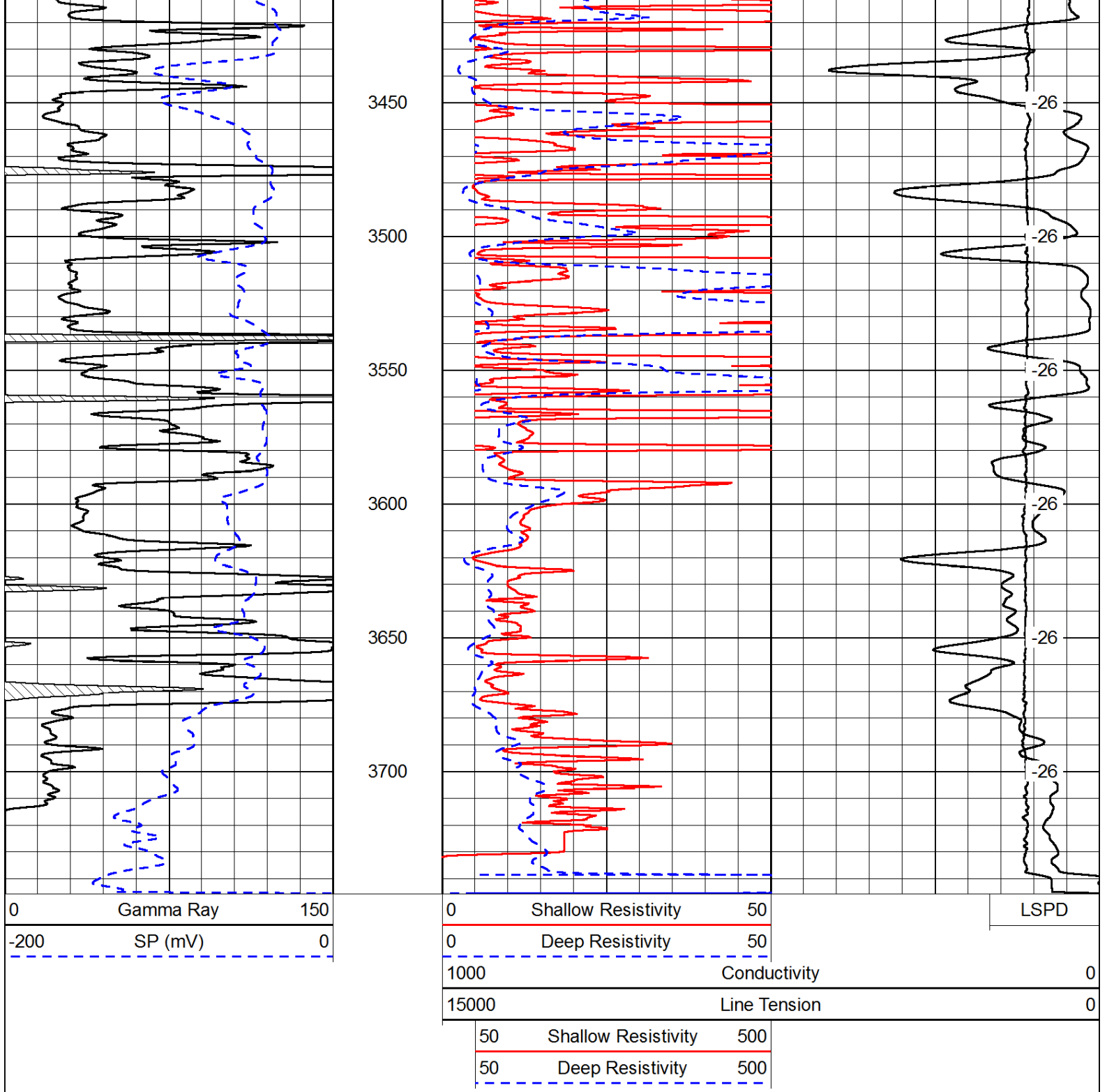




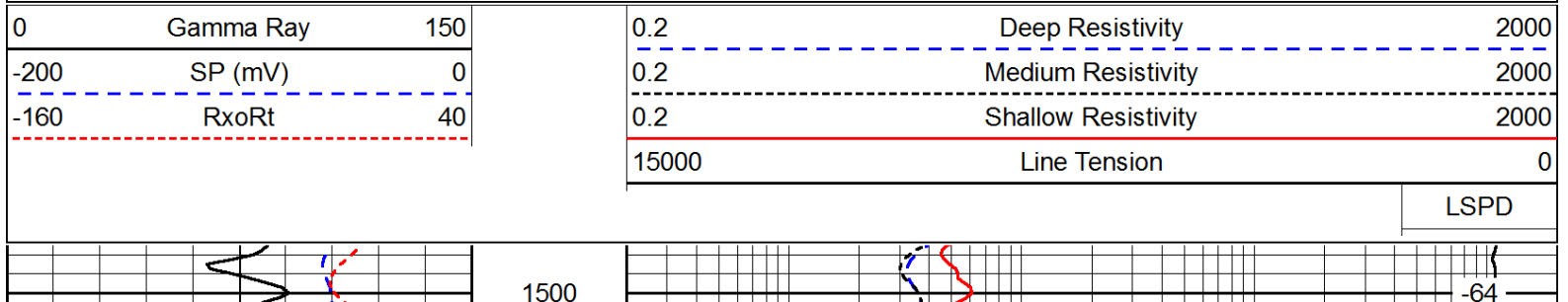


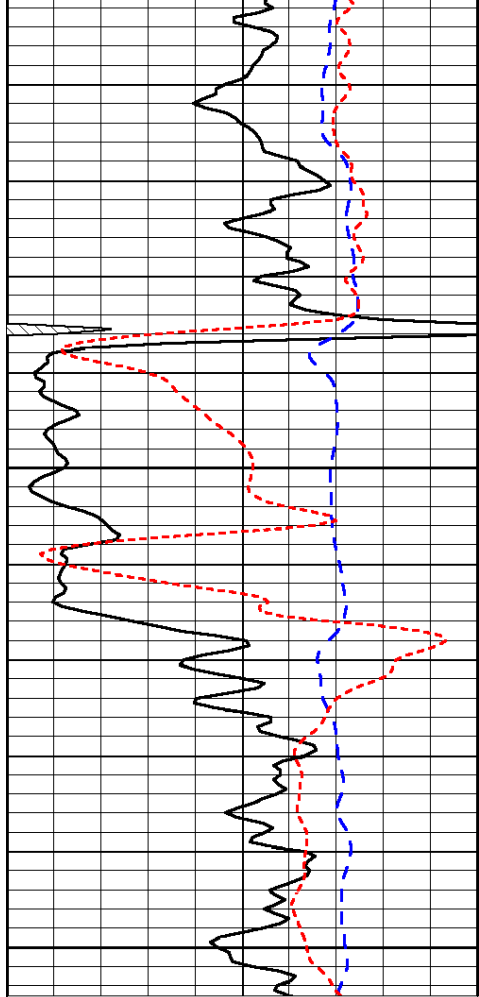






Database File: c:\warrior\data\amwar_hammerschmidt #1-11\amwar_090312hd.db
 Dataset Pathname: dil/awstack
 Presentation Format: dil
 Dataset Creation: Mon Sep 03 21:45:26 2012
 Charted by: Depth in Feet scaled 1:240

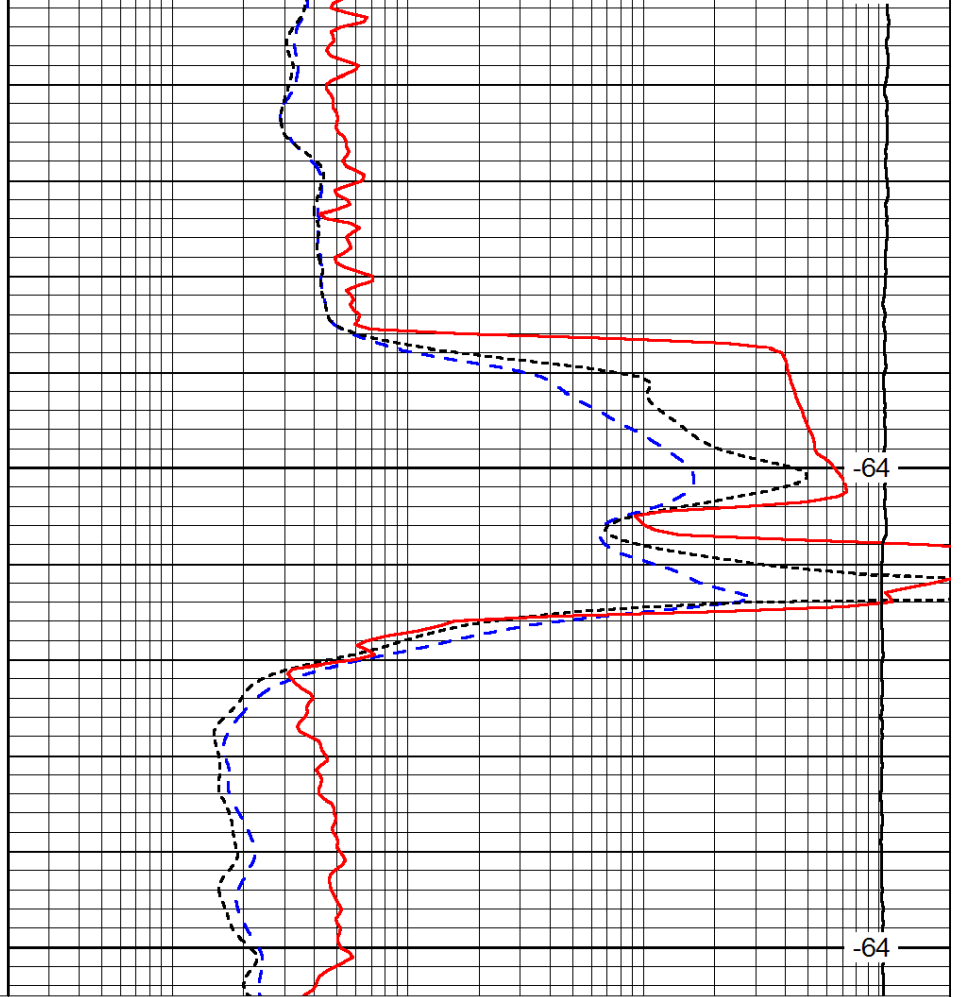




0	Gamma Ray	150
-200	SP (mV)	0
-160	RxoRt	40

1550

1600



0.2	Deep Resistivity	2000
0.2	Medium Resistivity	2000
0.2	Shallow Resistivity	2000
15000	Line Tension	0

-64

-64

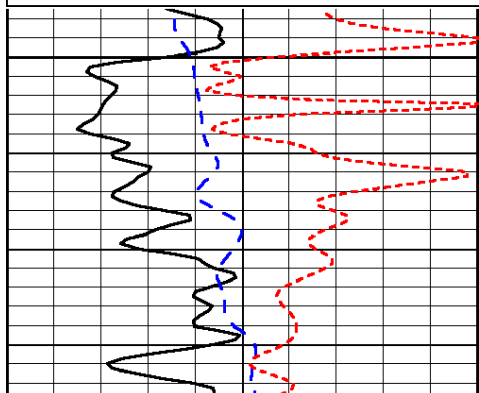
LSPD

Database File: c:\warrior\data\amwar_hammerschmidt #1-11\amwar_090312hd.db
 Dataset Pathname: dil/awstack
 Presentation Format: dil
 Dataset Creation: Mon Sep 03 21:45:26 2012
 Charted by: Depth in Feet scaled 1:240

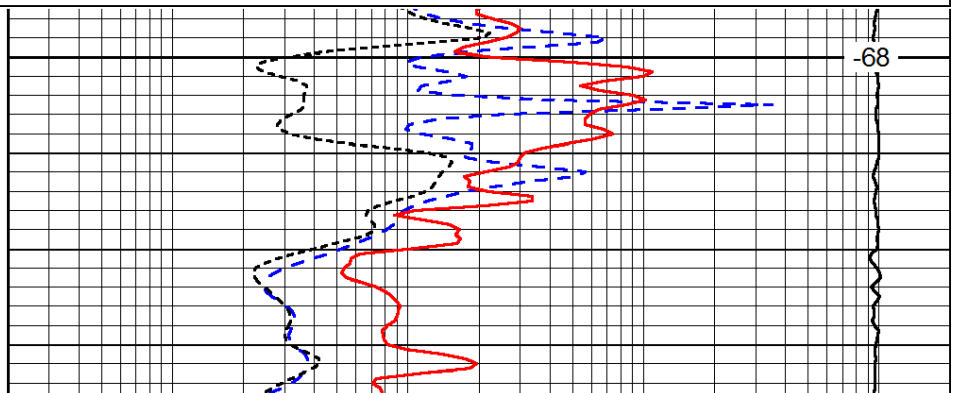
0	Gamma Ray	150
-200	SP (mV)	0
-160	RxoRt	40

0.2	Deep Resistivity	2000
0.2	Medium Resistivity	2000
0.2	Shallow Resistivity	2000
15000	Line Tension	0

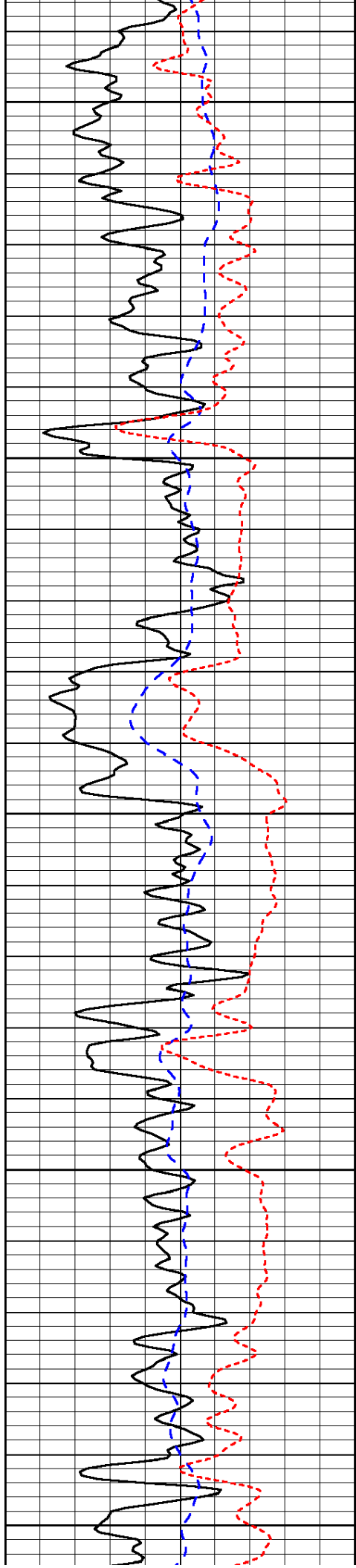
LSPD



2000



-68



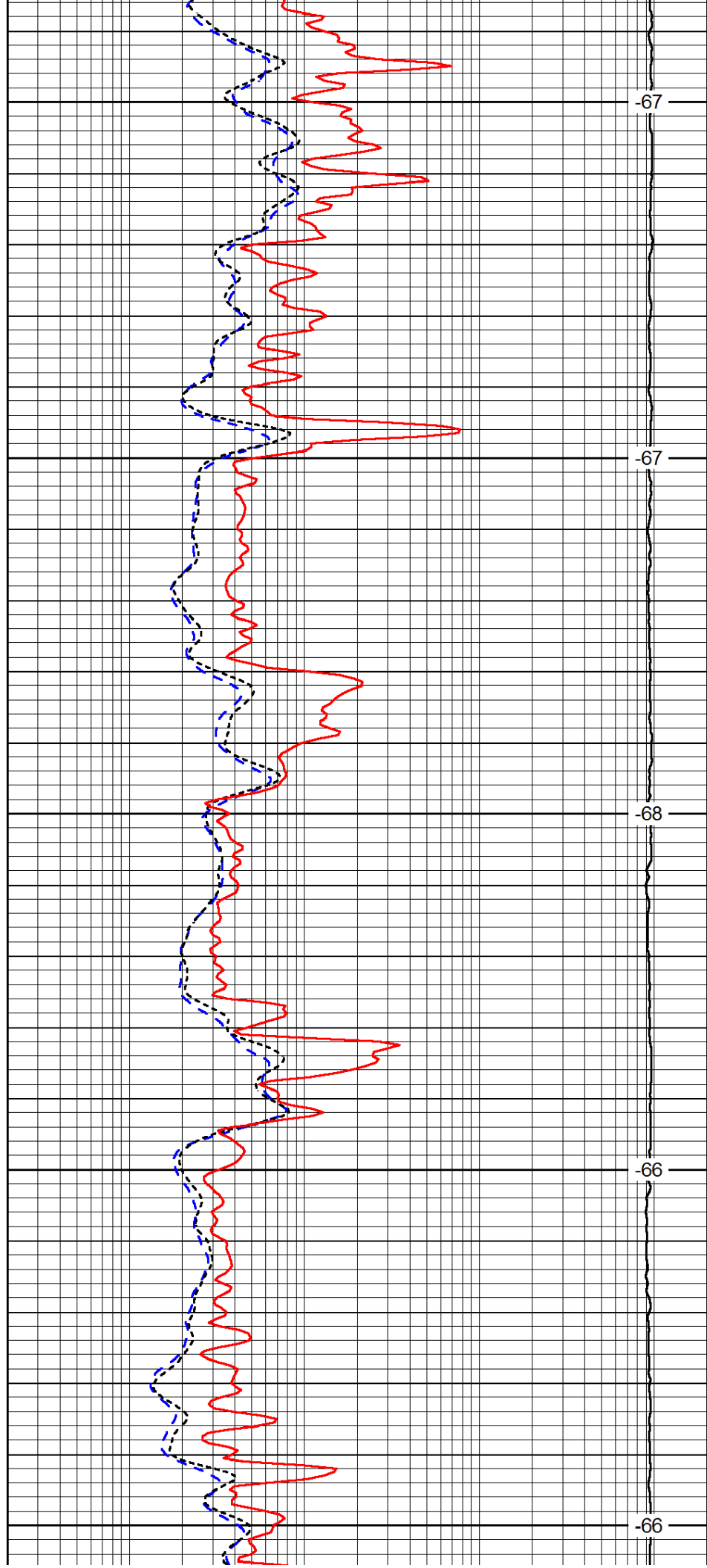
2050

2100

2150

2200

2250



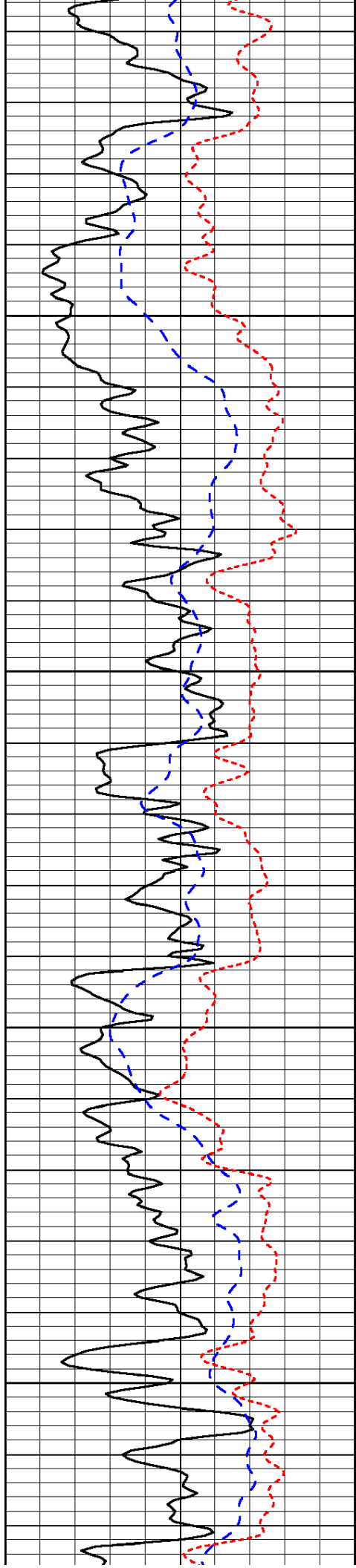
-67

-67

-68

-66

-66

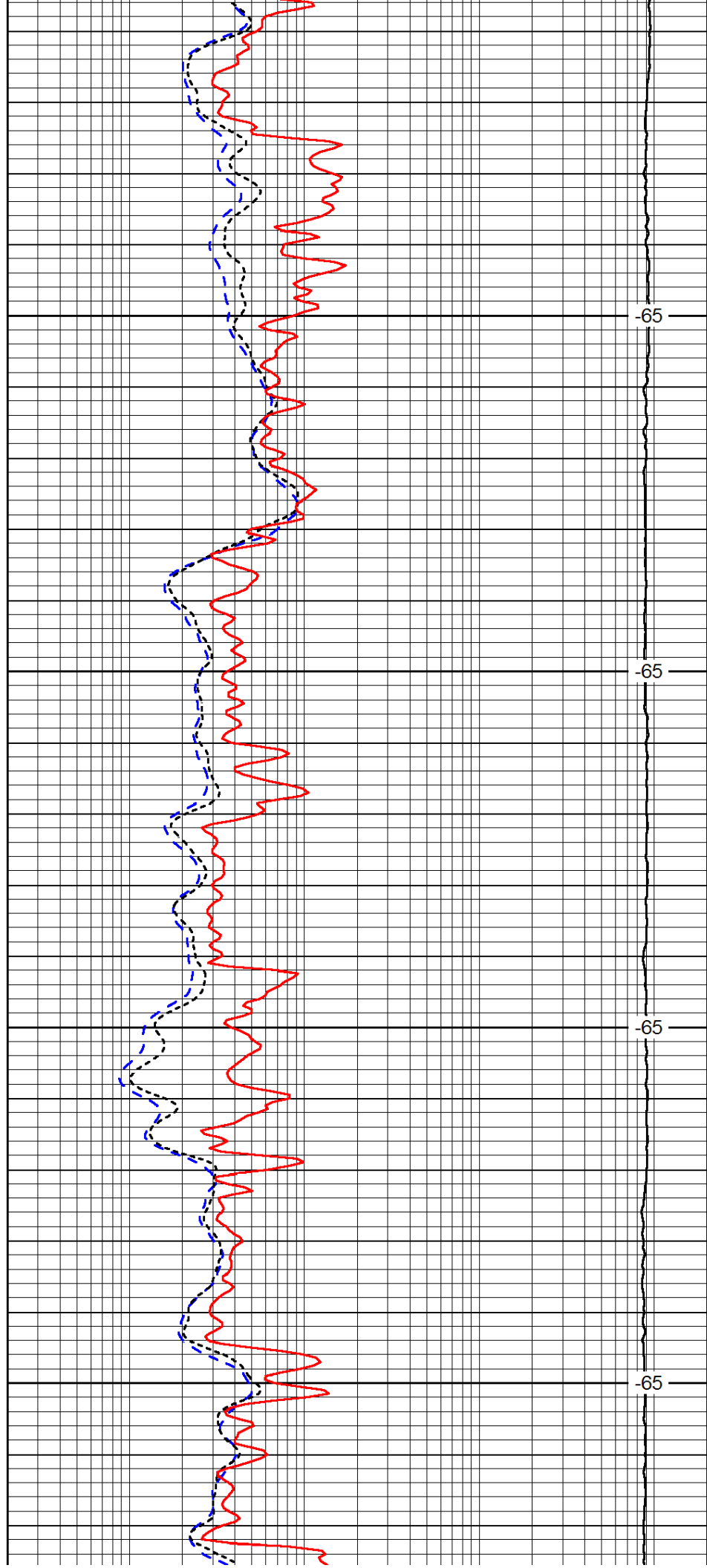


2300

2350

2400

2450

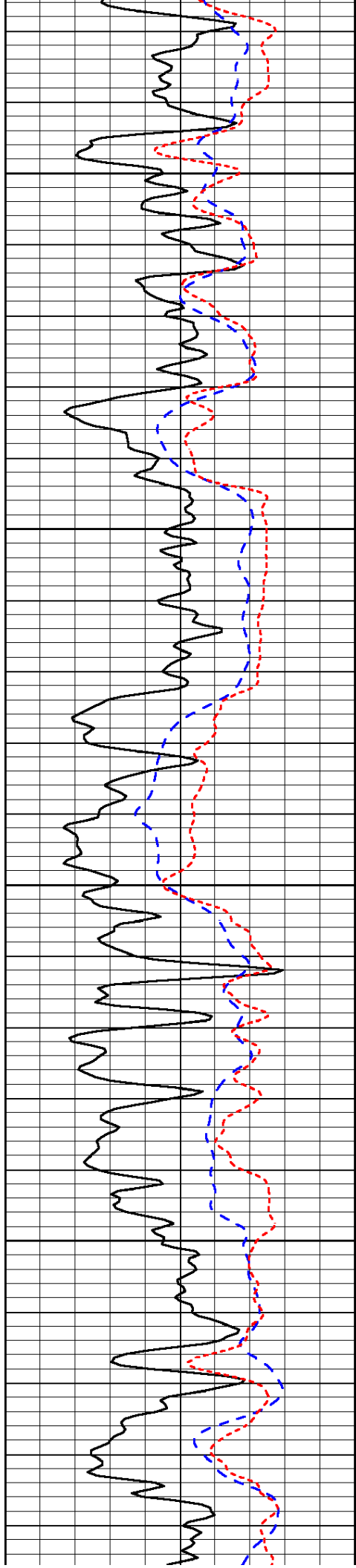


-65

-65

-65

-65

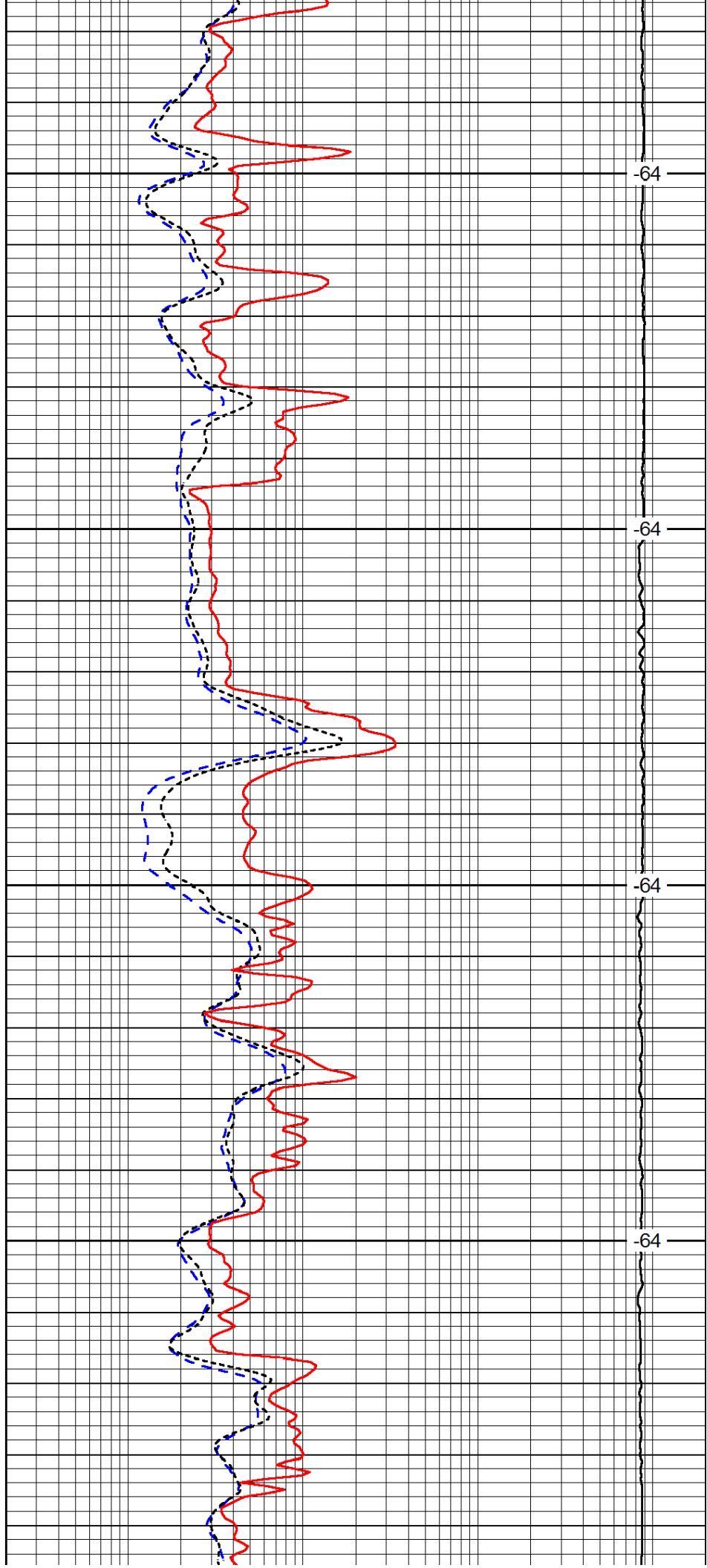


2500

2550

2600

2650

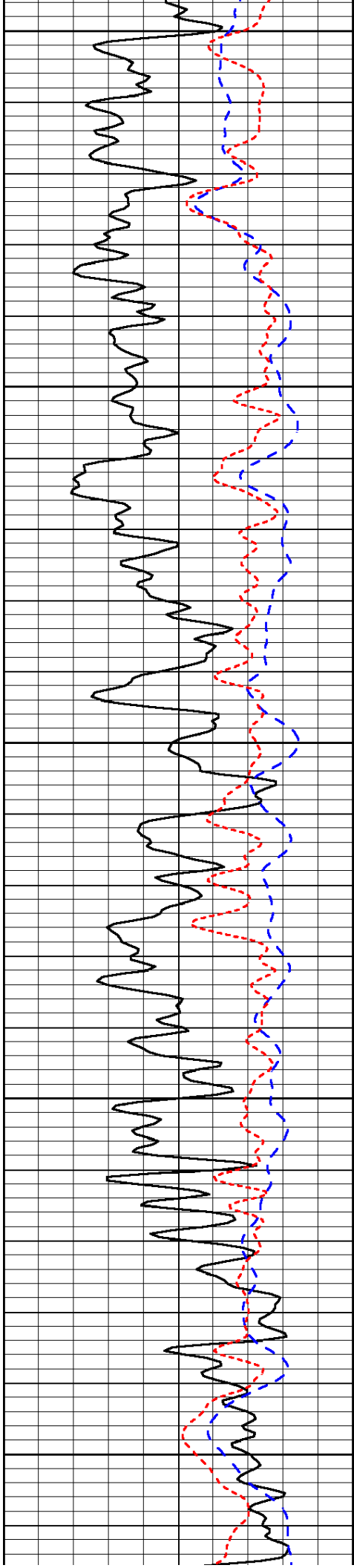


-64

-64

-64

-64



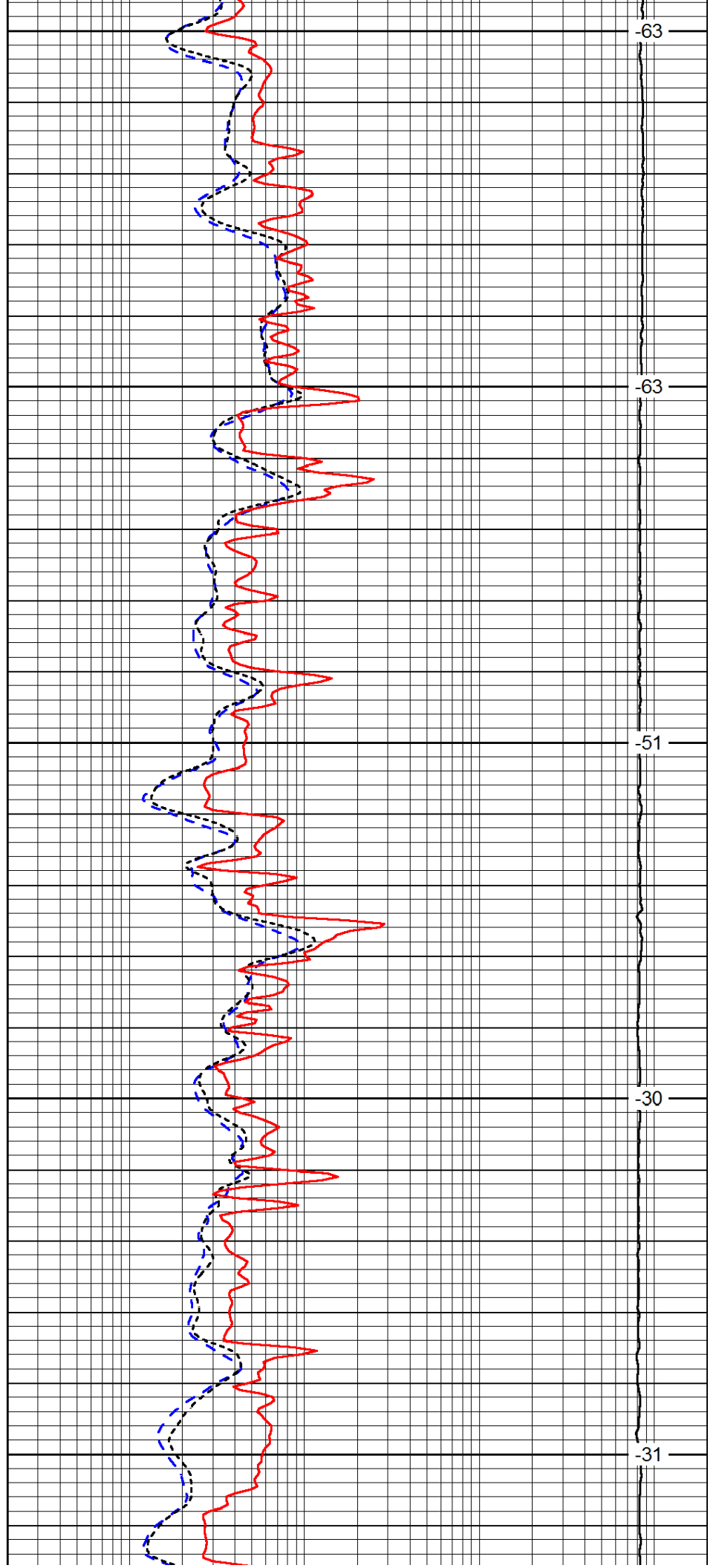
2700

2750

2800

2850

2900



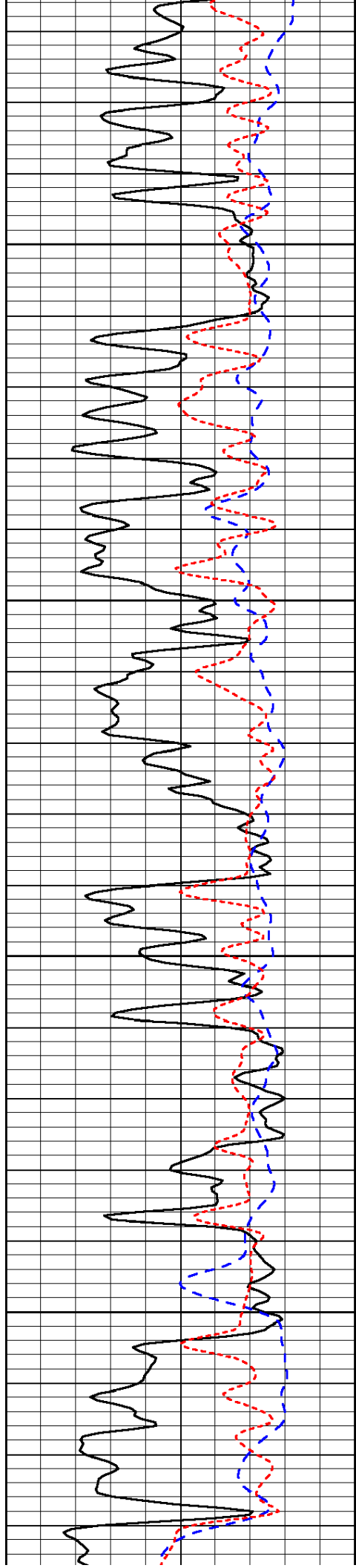
-63

-63

-51

-30

-31

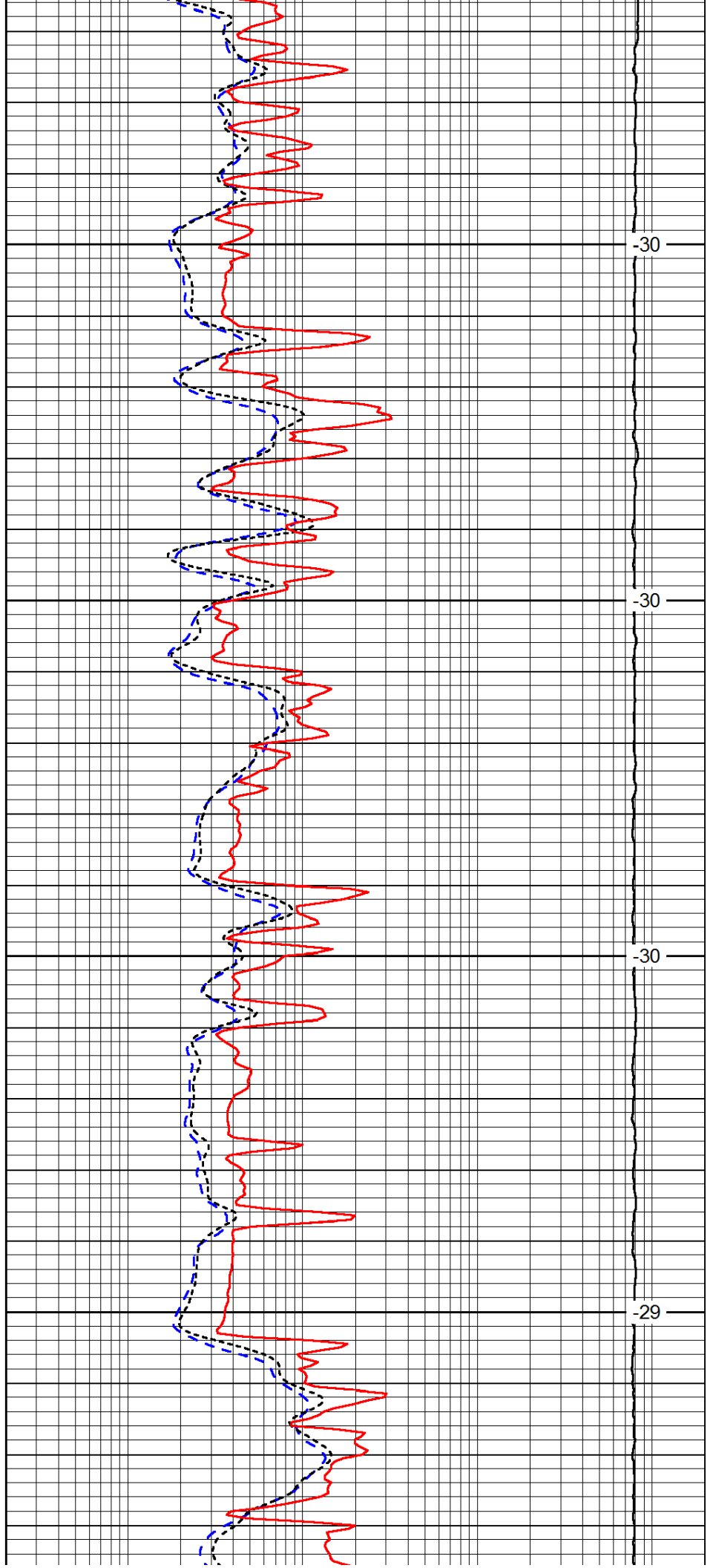


2950

3000

3050

3100

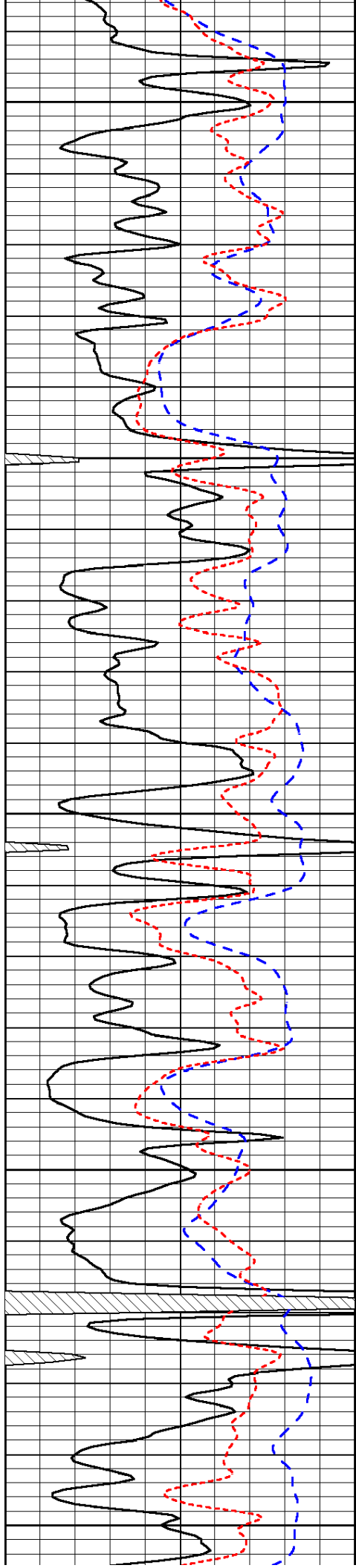


-30

-30

-30

-29



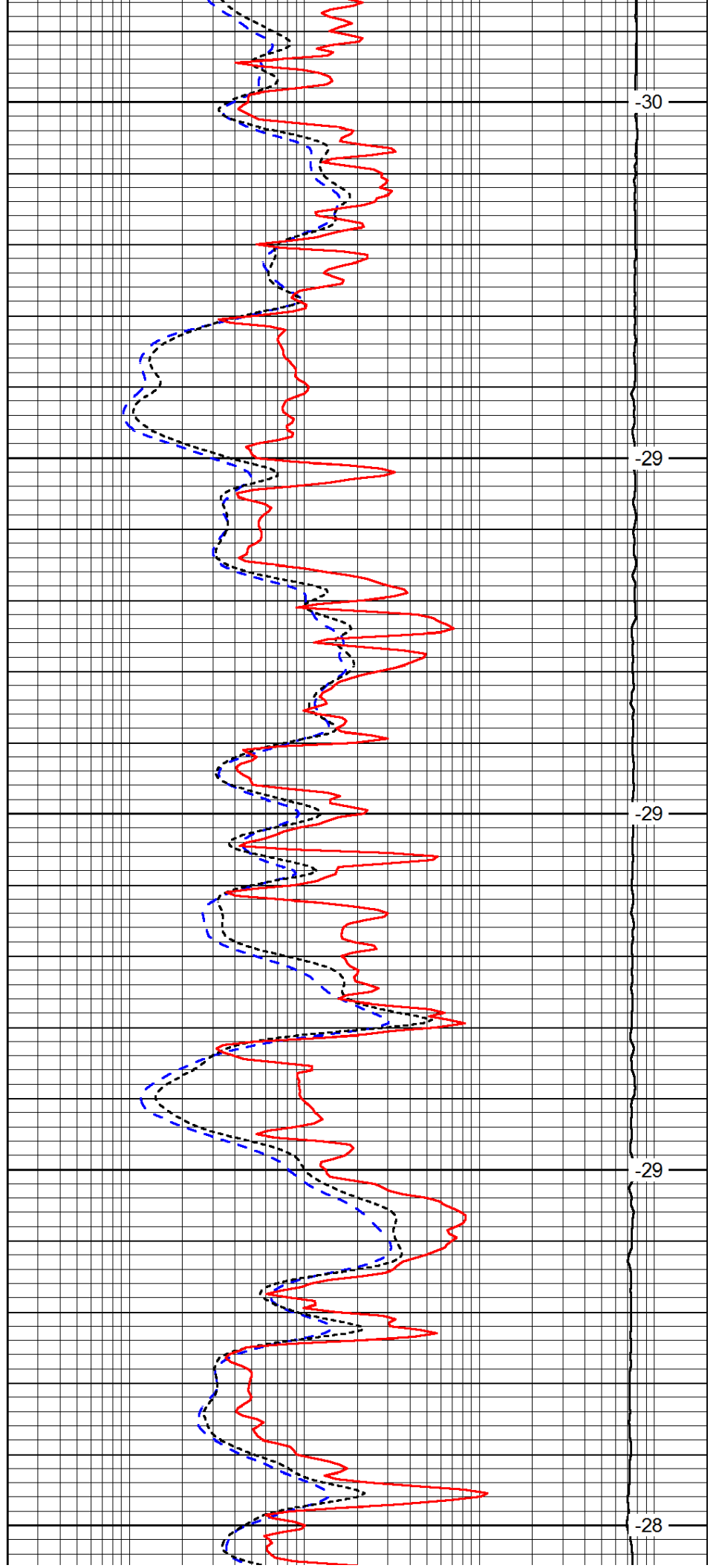
3150

3200

3250

3300

3350



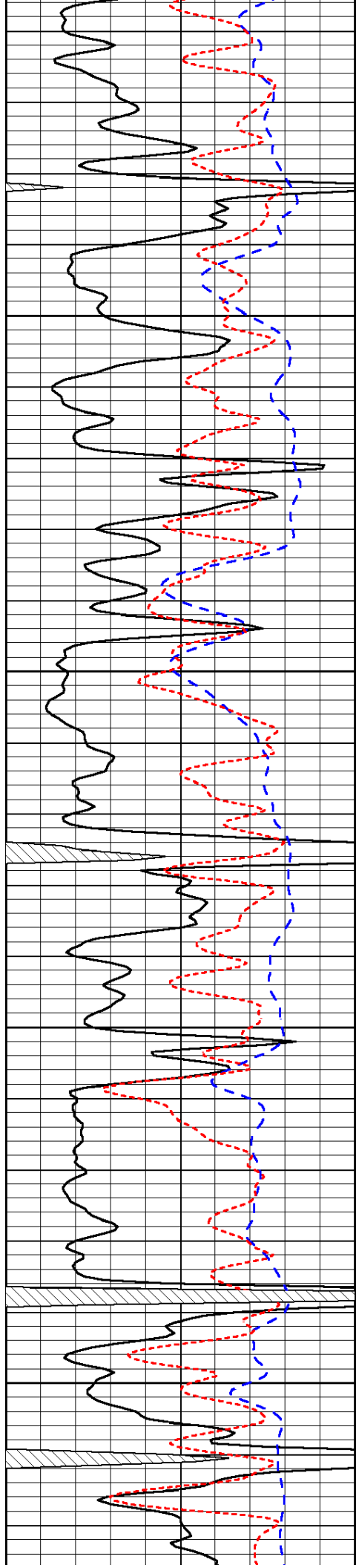
-30

-29

-29

-29

-28

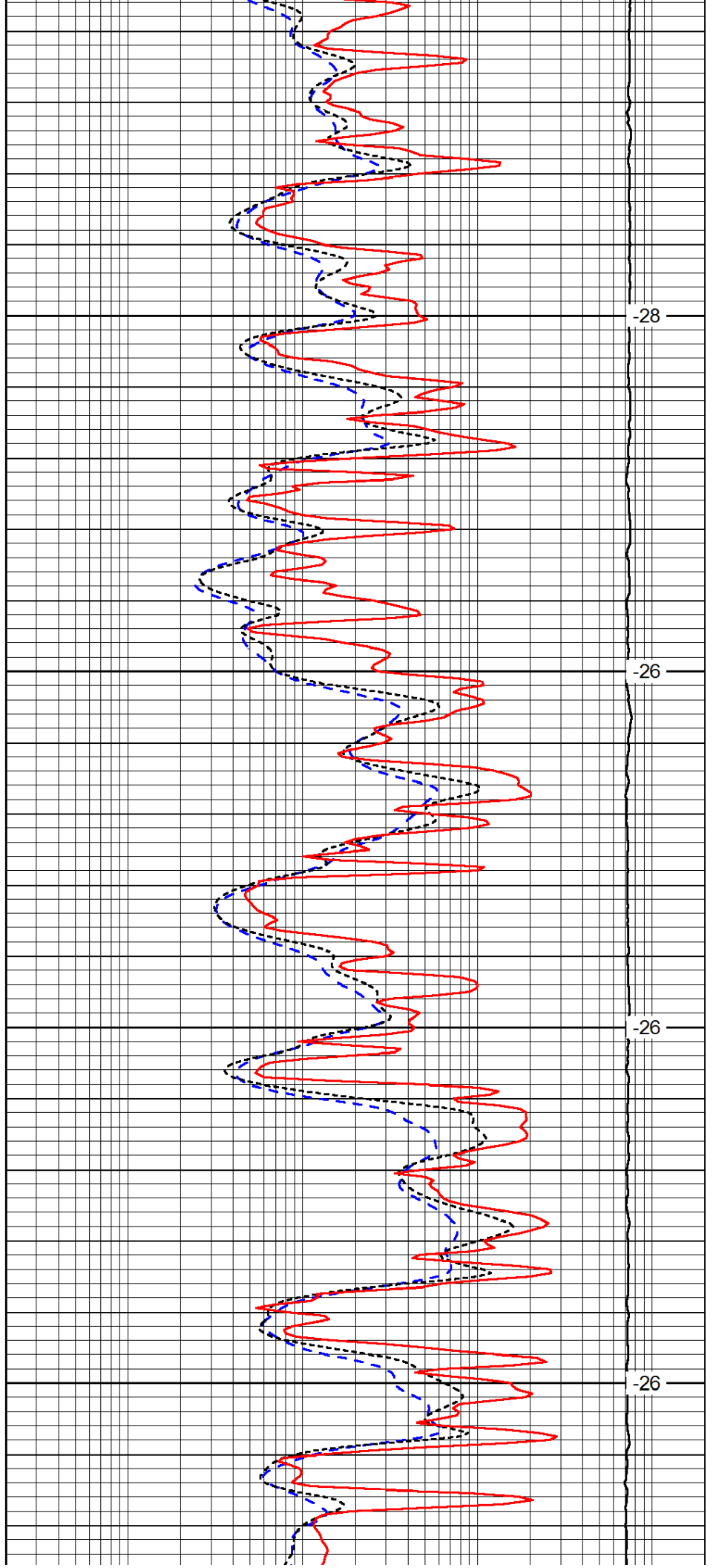


3400

3450

3500

3550

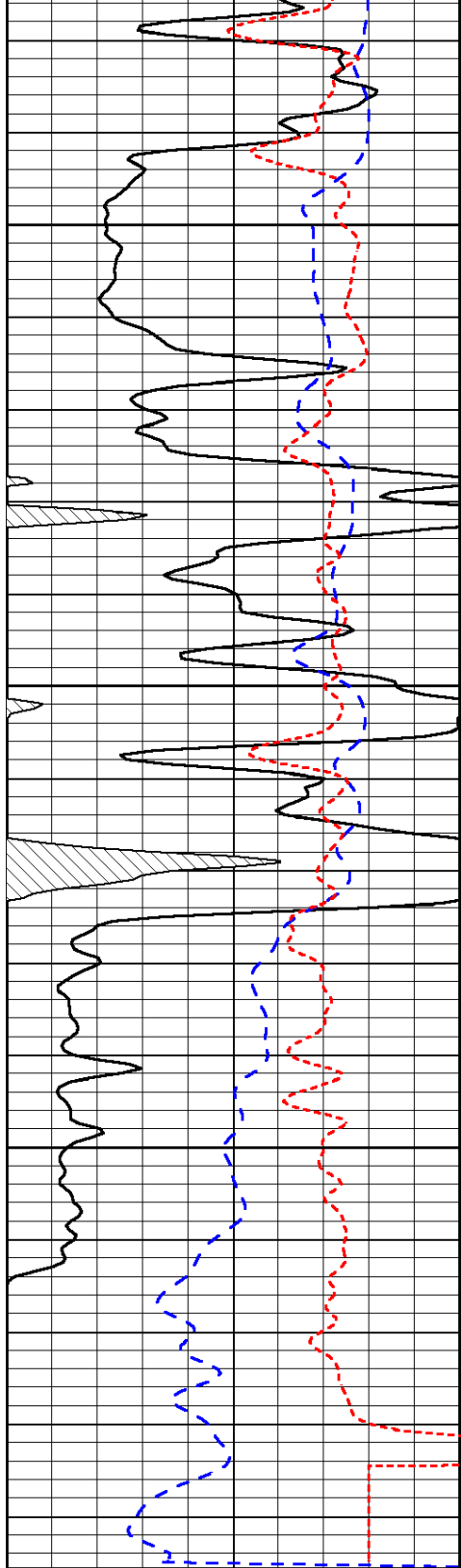


-28

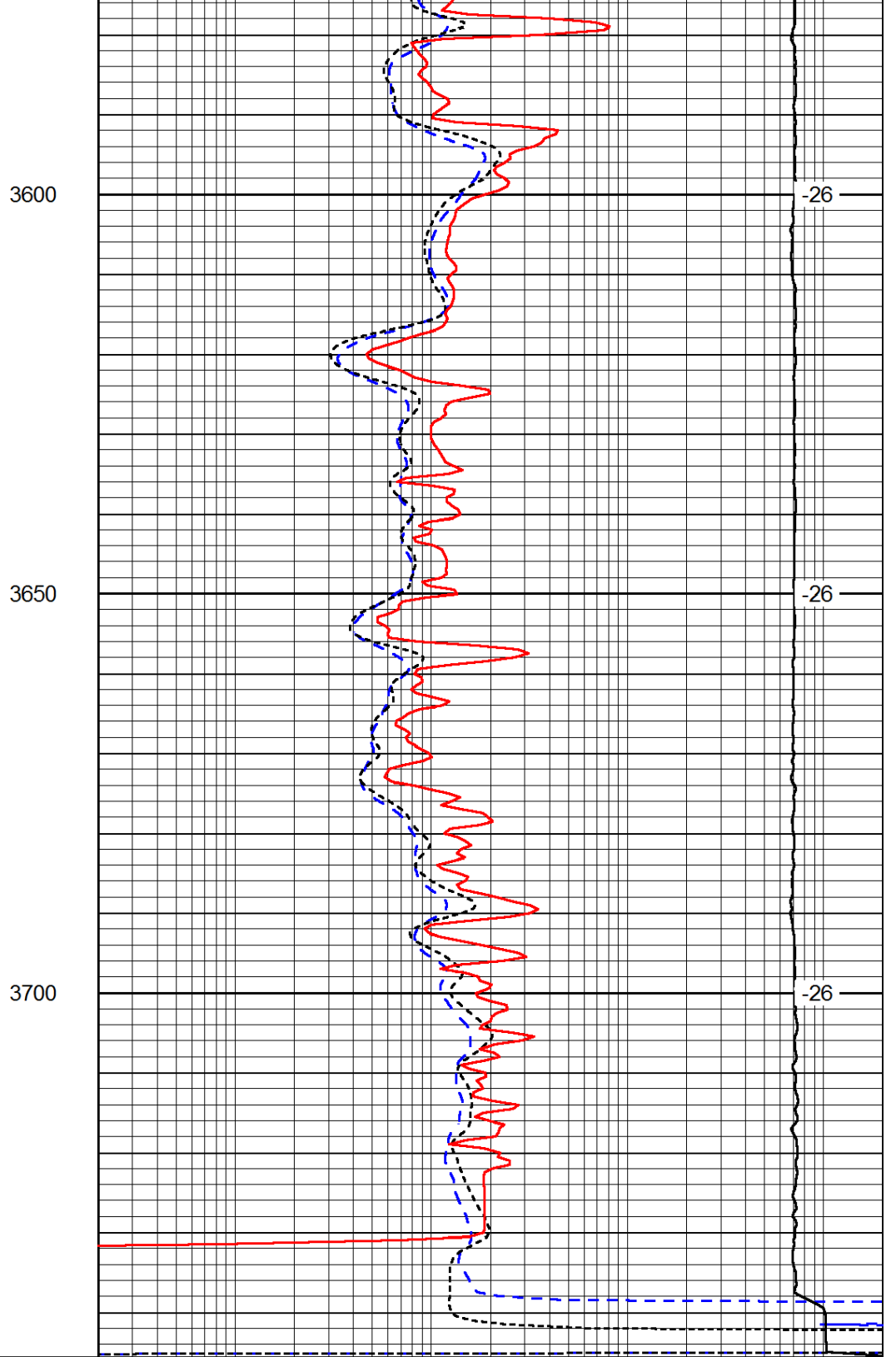
-26

-26

-26



0	Gamma Ray	150
-200	SP (mV)	0
-160	RxoRt	40



0.2	Deep Resistivity	2000
0.2	Medium Resistivity	2000
0.2	Shallow Resistivity	2000
15000	Line Tension	0

LSPD