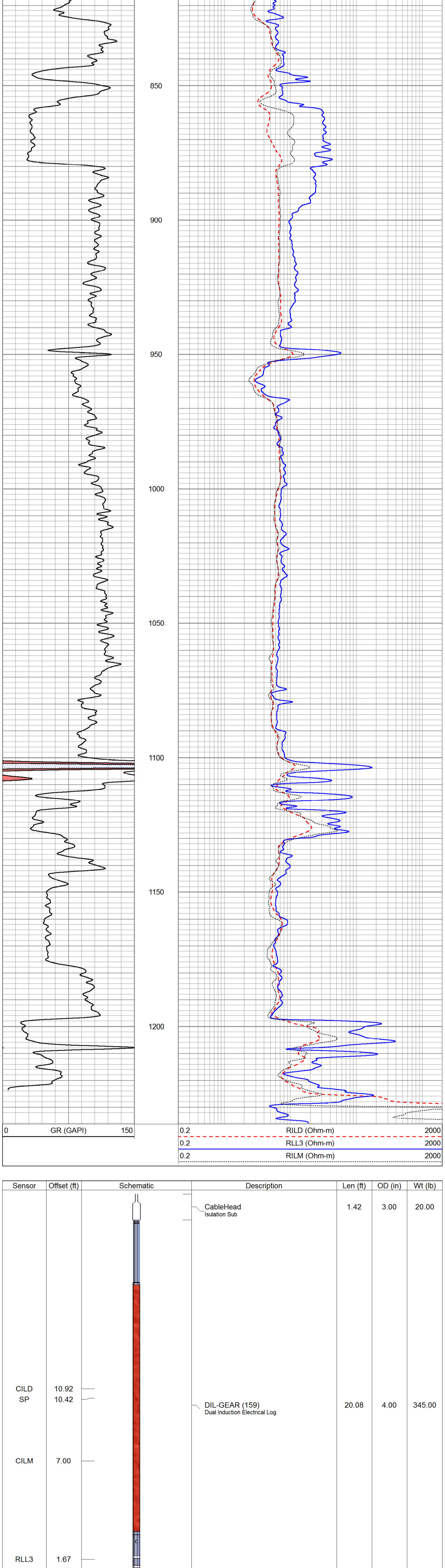
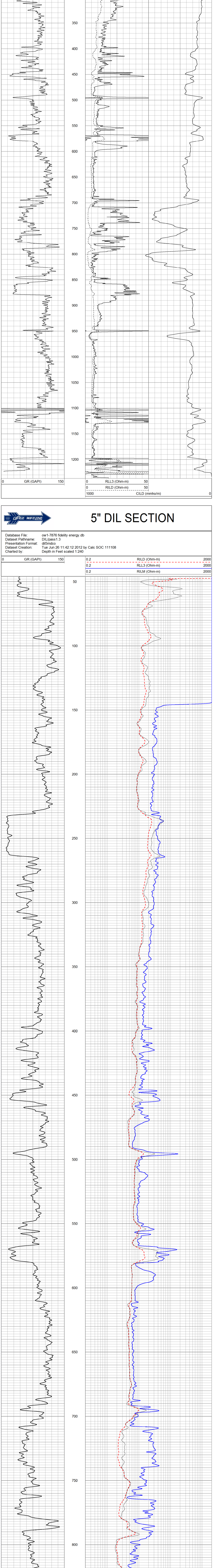


		DUAL INDUCTION LL3/GR LOG
Company: JOHN M. DENMAN OIL CO., INC.		
Well:	BECK # S-1	
Field:	PERU - SEDAN	
County:	CHAUTAUQUA	
State:	KANSAS	
Location:	County: CHAUTAUQUA State: KANSAS AP# : 15-019-27285-0000 SW SE NE NE 3870' FSU, 8.4785' FWL C/L: SWN	
Permanent Datum:	SEC 1 TWP. 3SS RGE. 11E	Elevation: 884' est.
Log Measured From:	QL	E.L. 884' est.
Charting Measured From:	QL	E.L. 884' est.
Date:	6-25-2012	
Run Number:	ONE	
Depth:	1228'	
Bottom Logged Interval:		
Total Logged Interval:		
Charting Depth:	8.50' @ 4'	
Charting Logger:	8.50' @ 4'	
Time Spent in Hole:	WATER	
Log Intervals:		
Density / Velocity:		
Run @ Mass Temp:		
Source of Sample:		
Run @ Mass Temp:		
Source of Run/Time:		
Run @ B-T:		
Time Circulation Stopped:		
Time (Log/End of Bottom):		
Equipment Number:		
Location:	OWN	
Wired By:	LOWERY OK	
Recorded By:	MARSHALL	
Checked By:	REETS	

All interpretations are inferences based on electrical or other measurements and we cannot and do not guarantee the accuracy or correctness of any interpretation, and we shall not, except in the case of gross or willful negligence on our part, be liable or responsible for any loss, costs, damages, or expenses incurred or sustained by anyone resulting from any interpretation made by any of our officers, agents or employees. These interpretations are also subject to our general terms and conditions set out in our current Price Schedule.

Comments

OW1-7876
CREW: JOHNSON



Sensor	Offset (ft)	Schematic	Description	Len (ft)	OD (in)	Wt (lb)
CILD	10.92		Cable-Head Isulation Sub	1.42	3.00	20.00
SP	10.42					
CILM	7.00		DIL-GEAR (159) Dual Induction Electrical Log	20.08	4.00	345.00
RLL3	1.67					

Dataset: ow1-7876 fidelity energy.db; field/well/DIL/pass1
Total Length: 21.50 ft
Total Weight: 365.00 lb
O.D.: 4.00 in