



**DUAL RECEIVER
CEMENT BOND LOG**

**SUPERIOR
Hays,
Kansas**

Company **CRAWFORD OIL & GAS COMPANY, L.L.C.**

Well **MILLER #5**

Field

County **NORTON** State **KANSAS**

Location: **AP# : 15-137-20589-0000**
2397 FSL & 995 FEI
S/W - NW - NE - SE

SEC 5 TWP 3S RGE 23W
 Permanent Datum **GROUND LEVEL** Elevation **2341**
 Log Measured From **KELLY BUSHING 5' A.G.L.**
 Drilling Measured From **KELLY BUSHING**

Other Services
 KB 2346
 DT 2344
 GL 2341

Date **12-21-11**
 Run Number **01NE**
 Depth Driller **3623**
 Bottom Logger **3623**
 Bottom Logged Interval **2790**
 Top Log Interval **778**
 Open Hole Size **WATER**

Type Fluid
 Density/Viscosity
 Max. Recorded Temp.
 Estimated Cement Top

Time Well Ready
 Equipment on Bottom
 Equipment Number
 HAYS KS
 788

Recorded By
 JEFFREY SEB
 LARRY CRAWFORD

Witnessed By
 LARRY CRAWFORD

Booster Record
 Run Number **12** Bit **1/4** From **0** To **0**
 Size **7/8** Weight **0** From **0** To **0**
 T.V.O. **7/8**

Taking Record
 From **0** To **0**

Casing Record
 Surface String **8 9/8** Size **0** VARI
 Production String **4 1/2** Size **0**

Time Well Ready
 Equipment on Bottom
 Equipment Number
 HAYS KS
 788

Recorded By
 JEFFREY SEB
 LARRY CRAWFORD

<<< Fold Here >>>

All interpretations are opinions based on inferences from electrical or other measurements and we cannot and do not guarantee the accuracy or correctness of any interpretation, and we shall not, except in the case of gross or willful negligence on our part, be liable or responsible for any loss, costs, damages, or expenses incurred or sustained by anyone resulting from any interpretation made by any of our officers, agents or employees. These interpretations are also subject to our general terms and conditions set out in our current Price Schedule.

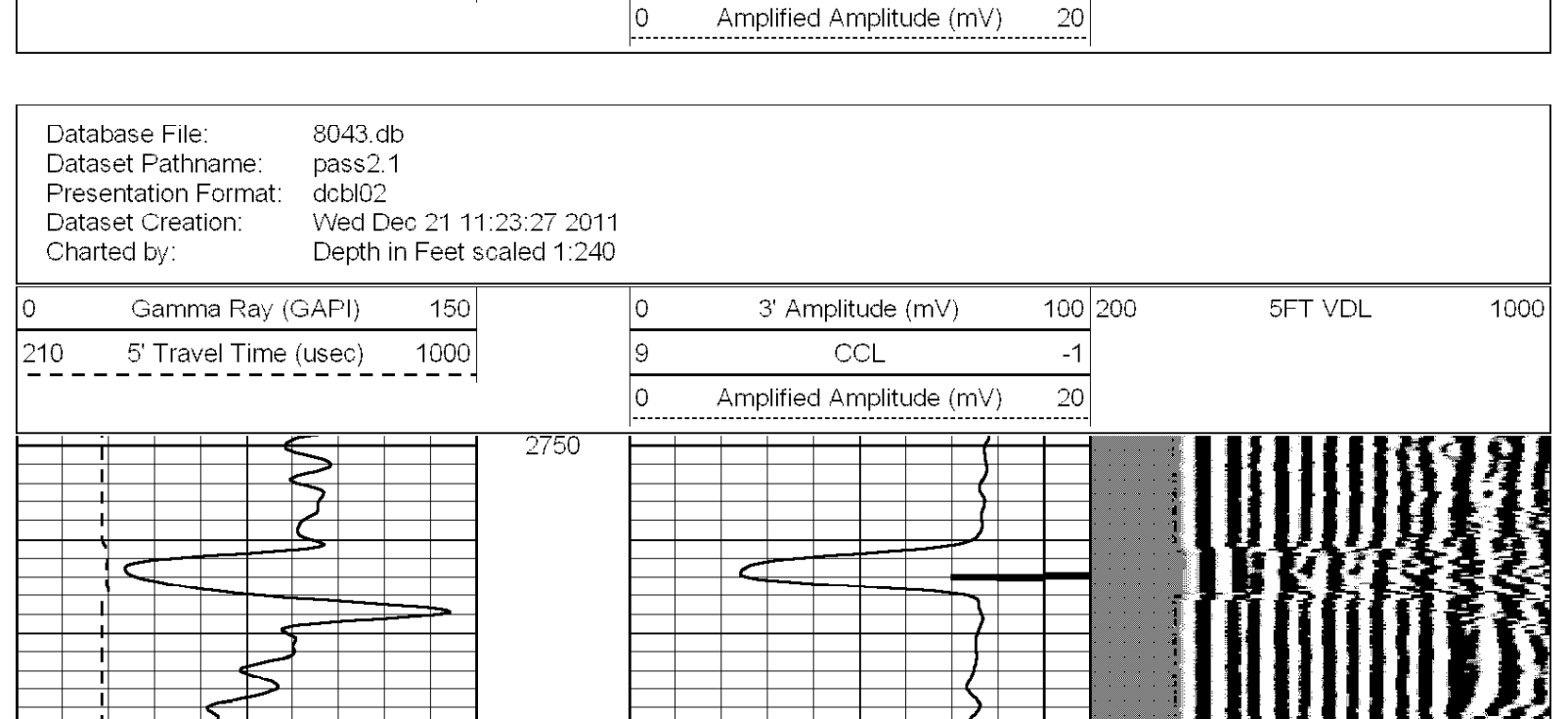
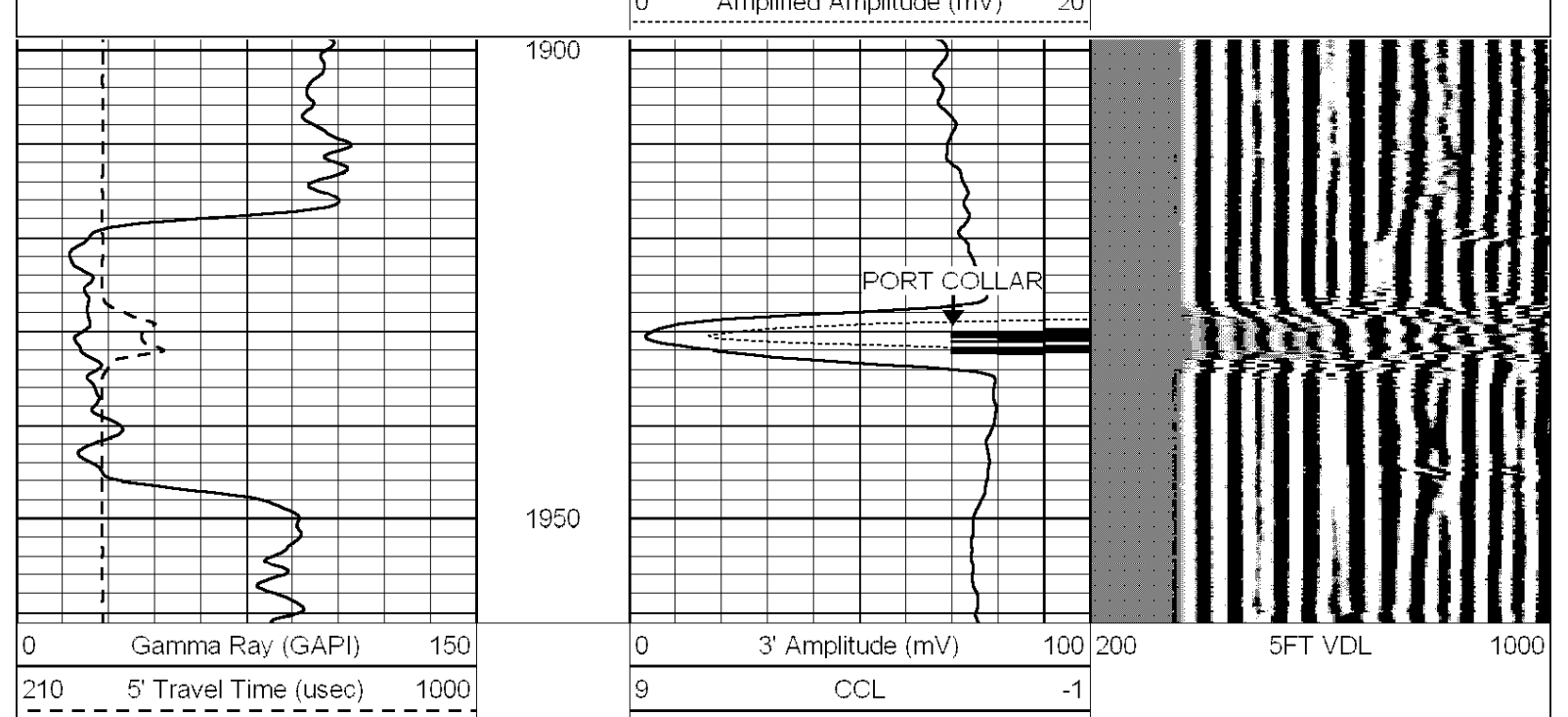
Comments

THANK YOU FOR USING SUPERIOR WELL SERVICES HAYS, KS (785) 628-6395
 DIRECTIONS: WEST EDGE OF NORTON, KS AT IMPLEMENT DEALERSHIP- 1 SOUTH ON RD. 1W TO RD. N - 1 WEST TO TOP OF HILL - WEST INTO



PORT COLAR

Database File: 8043 db
 Dataset Pathname: pass4
 Presentation Format: dcb102
 Dataset Creation: Wed Dec 21 11:12:42 2011 by Log Open-Cased 110302
 Charted by: Depth in Feet scaled 1:240



Database File: 8043 db
 Dataset Pathname: pass2.1
 Presentation Format: dcb102
 Dataset Creation: Wed Dec 21 11:23:27 2011
 Charted by: Depth in Feet scaled 1:240

