



CHANUTE, KANSAS

**GAMMA RAY  
NEUTRON  
COMPLETION LOG**

Company	A X & P, INC.	Well	UNIT 1 WOLFE WEST #WW26F
Field	NEODESHA	County	WILSON
State	KANSAS	Location:	SEC 20 TWP 30S RGE 16E NE NW NE SW
City	WILSON	APR # :	15-205-27991-00-00
Other Services		Permanent Datum	GL
		Log Measured From	GL
		Drilling Measured From	GL
Date	2-11-12	Elevation	794EST K.B. D.L. 794EST.
Run Number	1NW		
Depth Driller			
Depth Logger	840.5'		
Top Log Interval	0		
Bottom Logged Interval	840.5'		
Fluid Level	FULL		
Type Fluid	WATER		
Production Casing	2 7/8" @ TD		
Max. Recorded Temp.			
Estimated Cement Top			
Calculated Cement Top			
Amount & Type Cement			
Amount & Type Admix.			
Drilling Contractor	109		
Equipment Number			
Location	HALL, R		
Recorded By	HANKE, JI		
Witnessed By			

<<< Fold Here >>>

All interpretations are opinions based on inferences from electrical or other measurements and we cannot and do not guarantee the accuracy or correctness of any interpretation, and we shall not, except in the case of gross or willful negligence on our part, be liable or responsible for any loss, costs, damages, or expenses incurred or sustained by anyone resulting from any interpretation made by any of our officers, agents or employees. These interpretations are also subject to our general terms and conditions set out in our current Price Schedule.

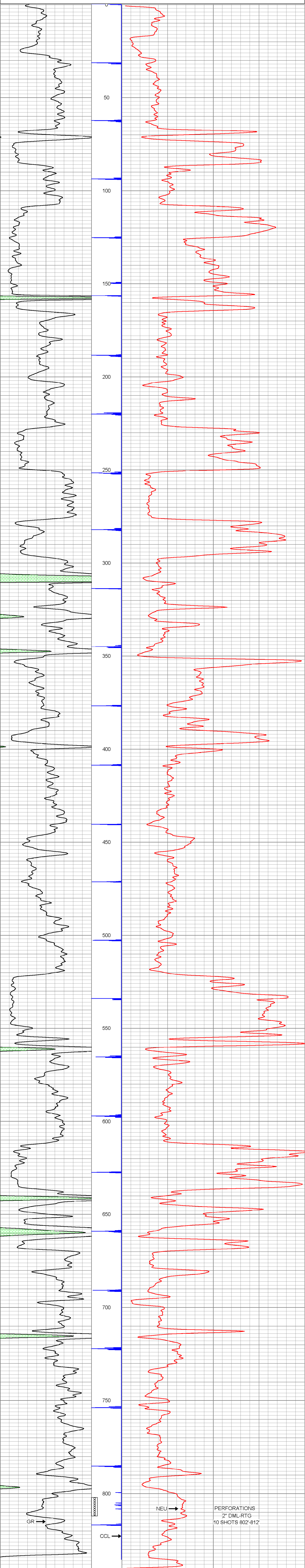
Comments

THANK YOU

Sensor	Offset (ft)	Schematic	Description	Len (ft)	OD (in)	Wt (lb)
GR	7.59		GR-TITAN_169 (TIT169_001) Titan 1 11/16" Gamma Ray	4.75	1.69	20.00
CCL	5.05		CCL-TITAN_169 (TIT169) Titan 1 11/16" Logging CCL	1.83	1.69	7.50
NEU	0.63		NEU-TITAN (TIT801) TITAN 1 11/16" Neutron	4.33	1.69	25.00

Dataset: unit 1 wolfe west#ww26f.db: field/well/run1/pass1  
 Total Length: 10.92 ft  
 Total Weight: 52.50 lb  
 O.D. 1.69 in

Database File: h:\unit 1 wolfe west#ww26f.db  
 Dataset Pathname: pass1  
 Presentation Format: gr-n-ccl  
 Dataset Creation: Sat Feb 11 10:30:34 2012 by Log Std Casedhole 09061  
 Charted by: Depth in Feet scaled 1:240



150 gr 300 3 CCL0.05 150 NEU (cps) 1700  
 0 GR 150