



WIRELINE SERVICES, INC.  
CHANUTE, KANSAS

**GAMMA RAY  
NEUTRON  
COMPLETION LOG**

Company	A X & P, INC.	Well	UNIT 1-WOLFE WEST WW#33E
Field	NEODESHA	County	WILSON
State	KANSAS	Location:	SEC 29 TWP 30S RGE 16E 1049 FSL & 1628 FWL NW NW SE SW
Run Number	1 NW	Other Services	API #: 15-205-28030-0000
Depth Logger	806.0'	Perment Datum	GL
Top Log Interval	0	Log Measured From	GL
Bottom Logged Interval	FULL	Drilling Measured From	GL
Fluid Level	FULL	Elevation	787' EST
Type Fluid	WATER	Elevation	K.B. 787' EST
Production Casing	2 7/8" @ TD	Elevation	D.F. 787' EST
Max. Recorded Temp.			
Estimated Cement Top			
Calculated Cement Top			
Amount & Type Cement			
Drilling Contractor	109		
Equipment Number			
Location	SANBORN, G.		
Recorded By	HANKE, J.J.		
Witnessed By			

<<< Fold Here >>>

All interpretations are opinions based on inferences from electrical or other measurements and we cannot and do not guarantee the accuracy or correctness of any interpretation, and we shall not, except in the case of gross or willful negligence on our part, be liable or responsible for any loss, costs, damages, or expenses incurred or sustained by anyone resulting from any interpretation made by any of our officers, agents or employees. These interpretations are also subject to our general terms and conditions set out in our current Price Schedule.

Comments

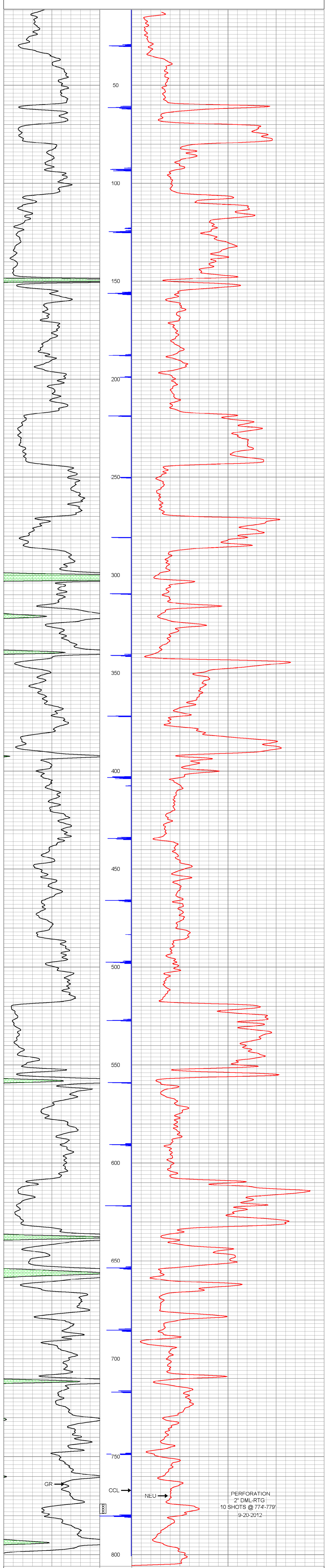
THANK YOU

Sensor	Offset (ft)	Schematic	Description	Len (ft)	OD (in)	Wt (lb)
GR	7.59		GR-TITAN_169 (TIT169_001) Titan 1 11/16" Gamma Ray	4.75	1.69	20.00
CCL	5.05		CCL-TITAN_169 (TIT169) Titan 1 11/16" Logging CCL	1.83	1.69	7.50
NEU	0.63		NEU-TITAN (TIT801) TITAN 1 11/16" Neutron	4.33	1.69	25.00

Dataset: unit 1 wolf west ww33e.db: field/well/run1/pass1  
Total Length: 10.92 ft  
Total Weight: 52.50 lb  
O.D.: 1.69 in

Database File: f:\a x & p, inc\unit 1-wolfe west ww#33e\unit 1 wolf west ww33e.db  
Dataset Pathname: pass1  
Presentation Format: gr-n-ccl  
Dataset Creation: Mon Sep 17 09:29:26 2012 by Log Std Casedhole 09061  
Charted by: Depth in Feet scaled 1.240

150	gr	300	3	CCL	0.05	100	NEU (cps)	2000
0	GR	150						



PERFORATION  
2" DML-RTG  
10 SHOTS @ 774-779'  
9-20-2012