



**SUPERIOR**  
Hays,  
Kansas

**MICRO**  
LOG

Company CASTLE RESOURCES, INC.  
Well LUDWICK #1  
Field CHASE-SILICA  
County RICE  
State KANSAS

Company CASTLE RESOURCES, INC.  
Well LUDWICK #1  
Field CHASE-SILICA  
County RICE State KANSAS

Location: API # : 15-159-22682-0000  
850' FNL & 2110' FWL  
NW - SE - NE - NW  
SEC 35 TWP 19S RGE 10W  
Permanent Datum GROUND LEVEL Elevation 1743  
Log Measured From KELLY BUSHING 10' A.G.L.  
Drilling Measured From KELLY BUSHING  
Elevation  
K.B. 1753  
D.F. 1751  
G.L. 1743

Date	3/5/12
Run Number	TWO
Depth Driller	3400
Depth Logger	3400
Bottom Logged Interval	3398
Top Log Interval	2400
Casing Driller	8 5/8" @ 216
Casing Logger	216
Bit Size	7 7/8
Type Fluid in Hole	CHEMICAL MUD
Density / Viscosity	9.3/48
pH / Fluid Loss	10.5/9.2
Source of Sample	FLOWLINE
Rim @ Meas. Temp	.75 @ 69F
Rmf @ Meas. Temp	.56 @ 69F
Rmc @ Meas. Temp	.90 @ 69F
Source of Rmf / Rmc	MEASURED
Rim @ BHT	.47 @ 111F
Time Circulation Stopped	2 HOURS
Time Logger on Bottom	
Maximum Recorded Temperature	111F
Equipment Number	680
Location	HAYS, KS.
Recorded By	JEFF GRONEMEG
Witnessed By	JERRY GREEN

<<< Fold Here >>>

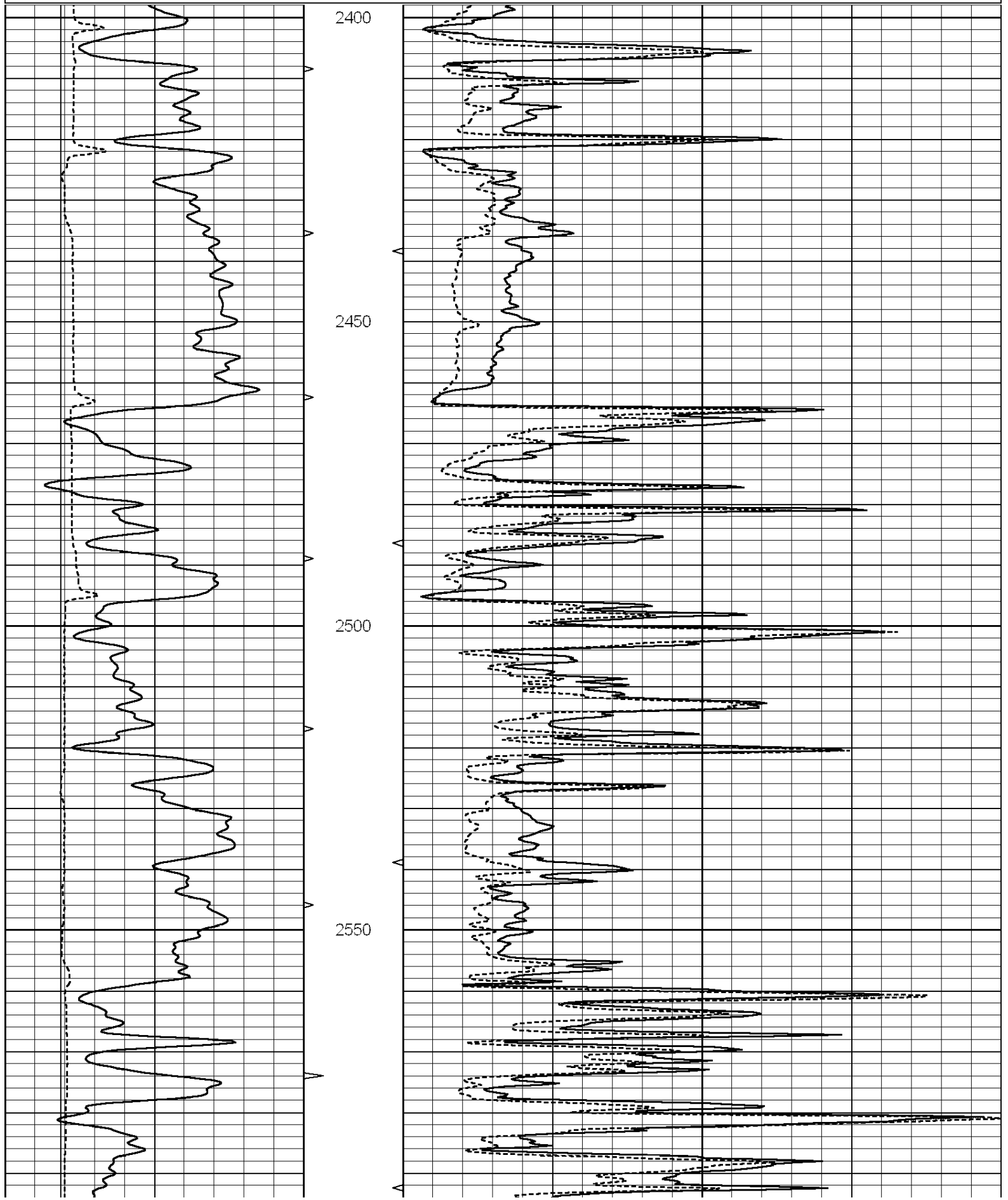
All interpretations are opinions based on inferences from electrical or other measurements and we cannot and do not guarantee the accuracy or correctness of any interpretation, and we shall not, except in the case of gross or willful negligence on our part, be liable or responsible for any loss, costs, damages, or expenses incurred or sustained by anyone resulting from any interpretation made by any of our officers, agents or employees. These interpretations are also subject to our general terms and conditions set out in our current Price Schedule.

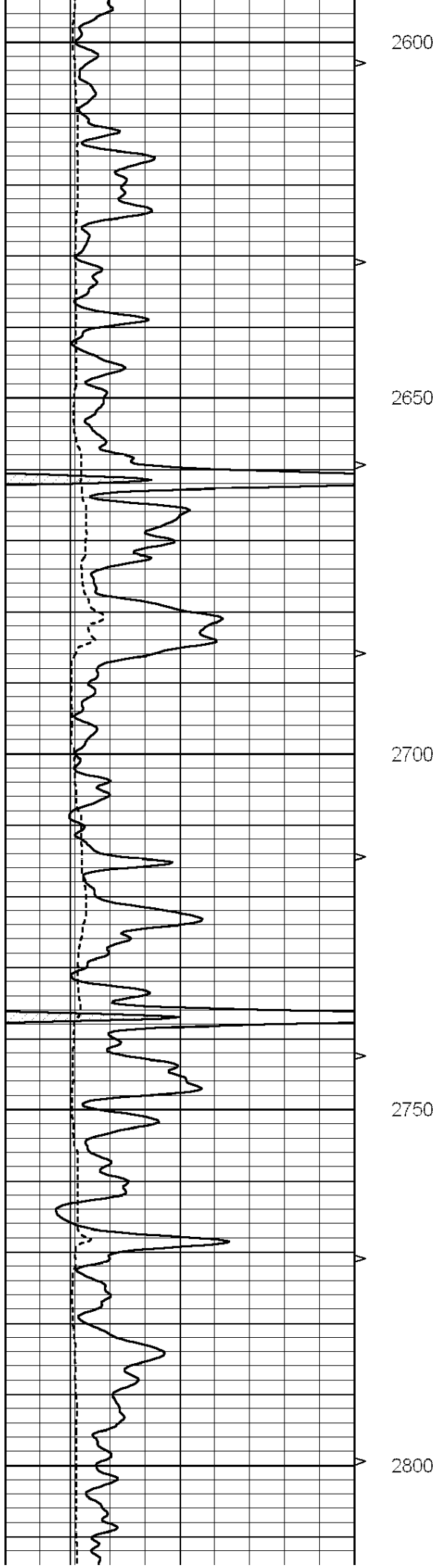
Comments

THANK YOU FOR USING SUPERIOR WELL SERVICE (785) 628-6395  
DIRECTIONS  
ELLINWOOD, KS - EAST TO RAYMOND TURNOFF - 1 MILE EAST - 1 MILE NORTH  
1/2 MILE EAST - SOUTH INTO

Database File: 008060ddn.db  
Dataset Pathname: pass5.3  
Presentation Format: \_micro  
Dataset Creation: Mon Mar 05 06:17:52 2012 by Calc Open-Cased 090629  
Charted by: Depth in Feet scaled 1:240

0	GAMMA RAY (GAPI)	150	ABHV	0	MEL1.5 (Ohm-m)	40
6	CALIPER (in)	16	10 (ft3)	0 0	MEL2.0 (Ohm-m)	40
			TBHV			
			0 (ft3)			





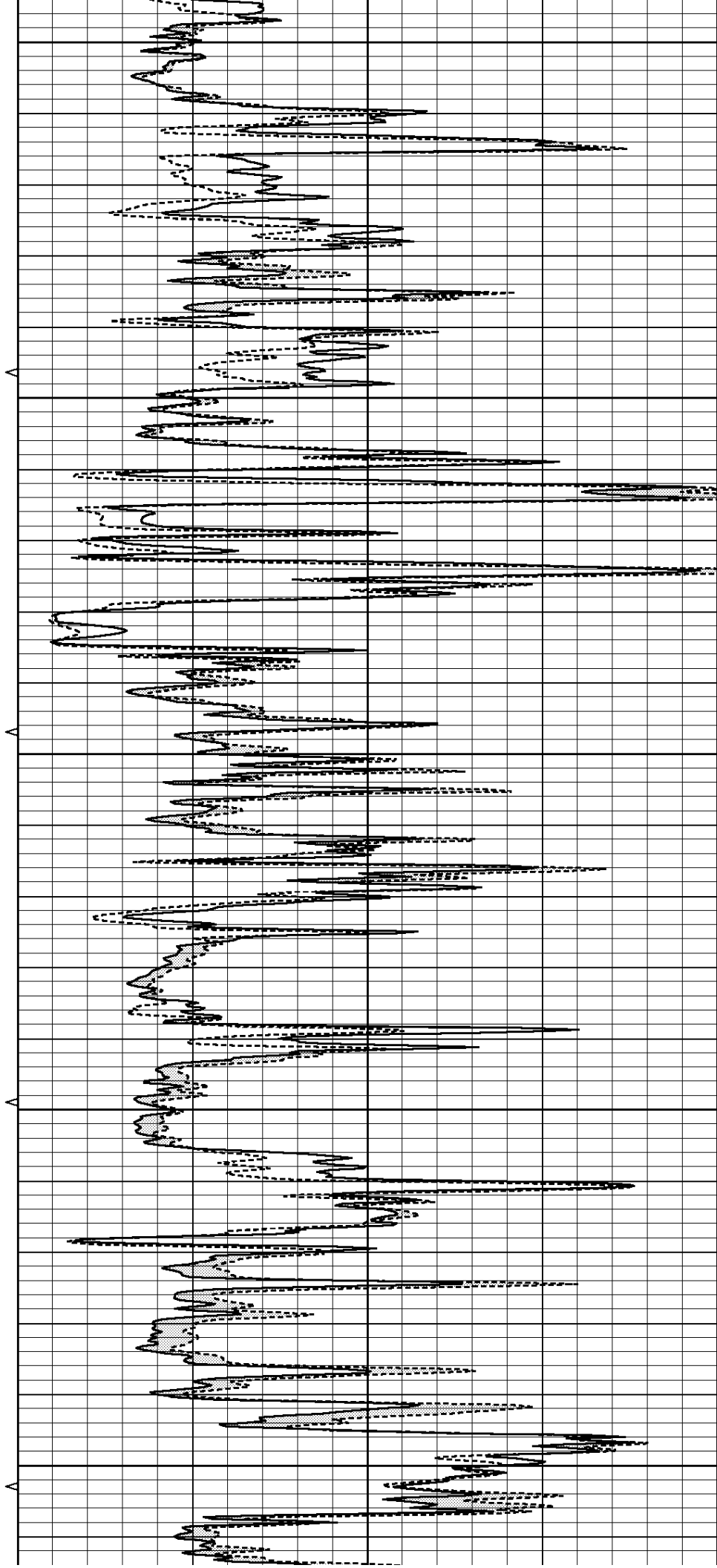
2600

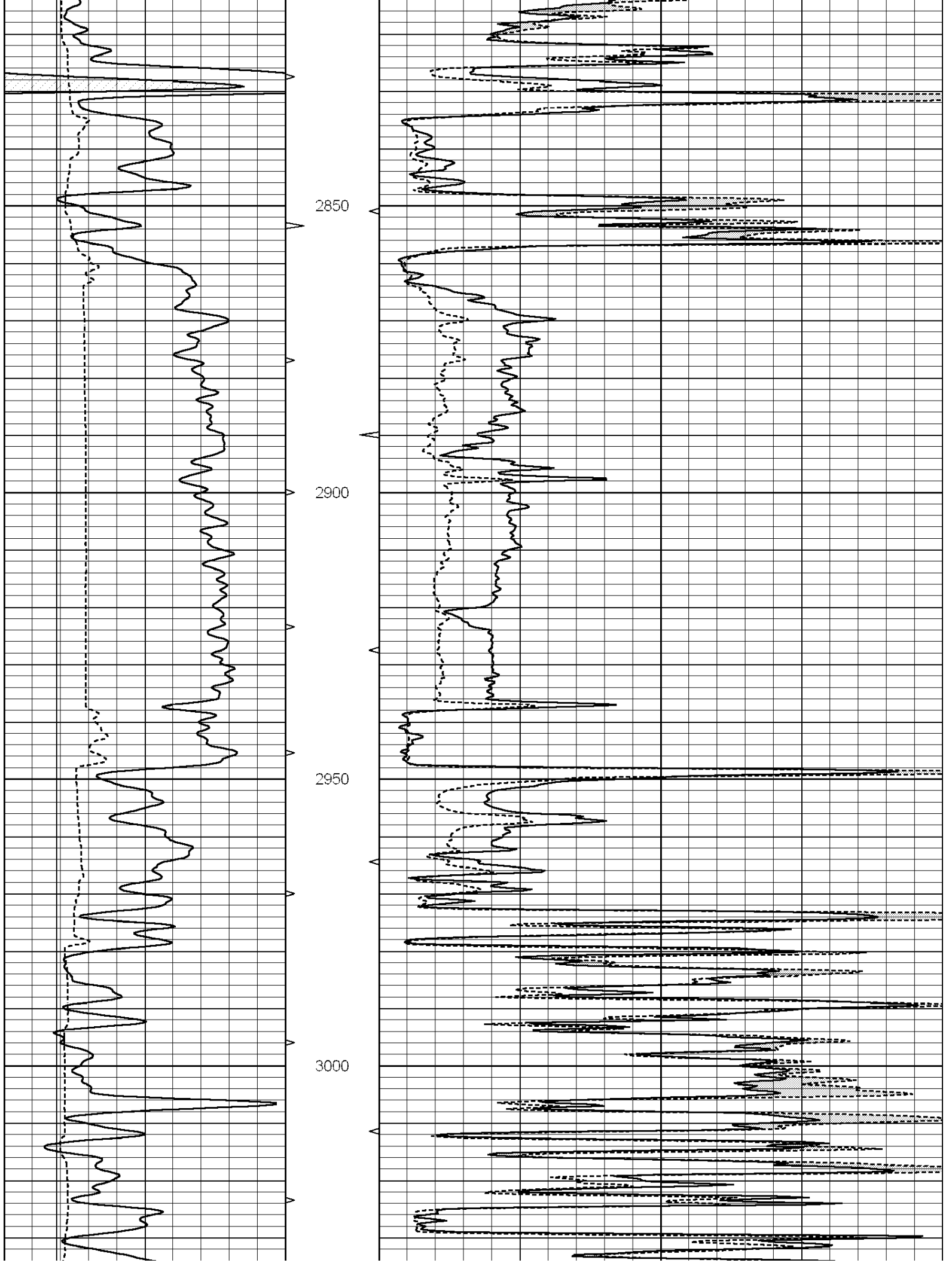
2650

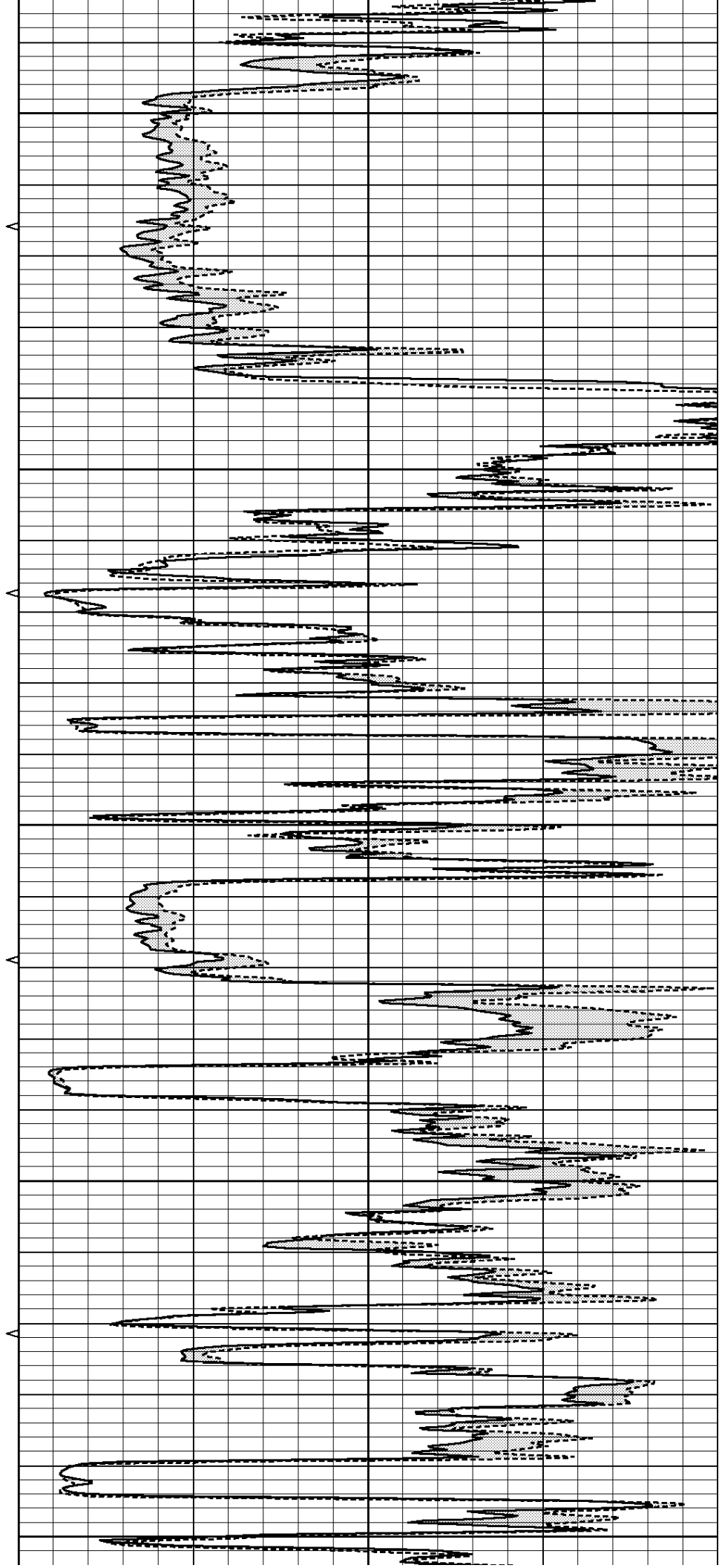
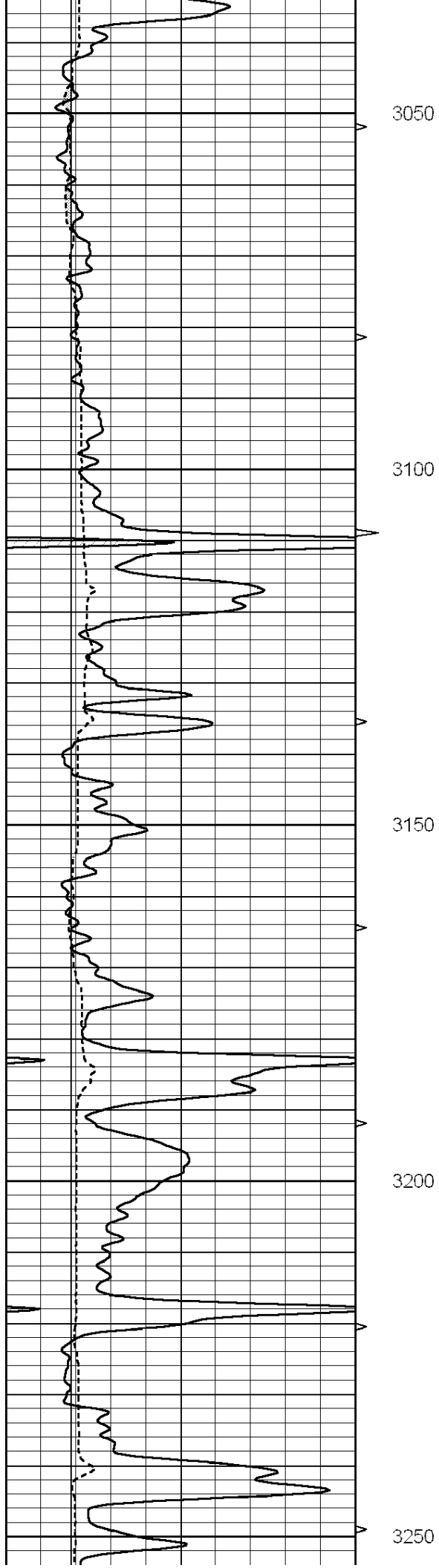
2700

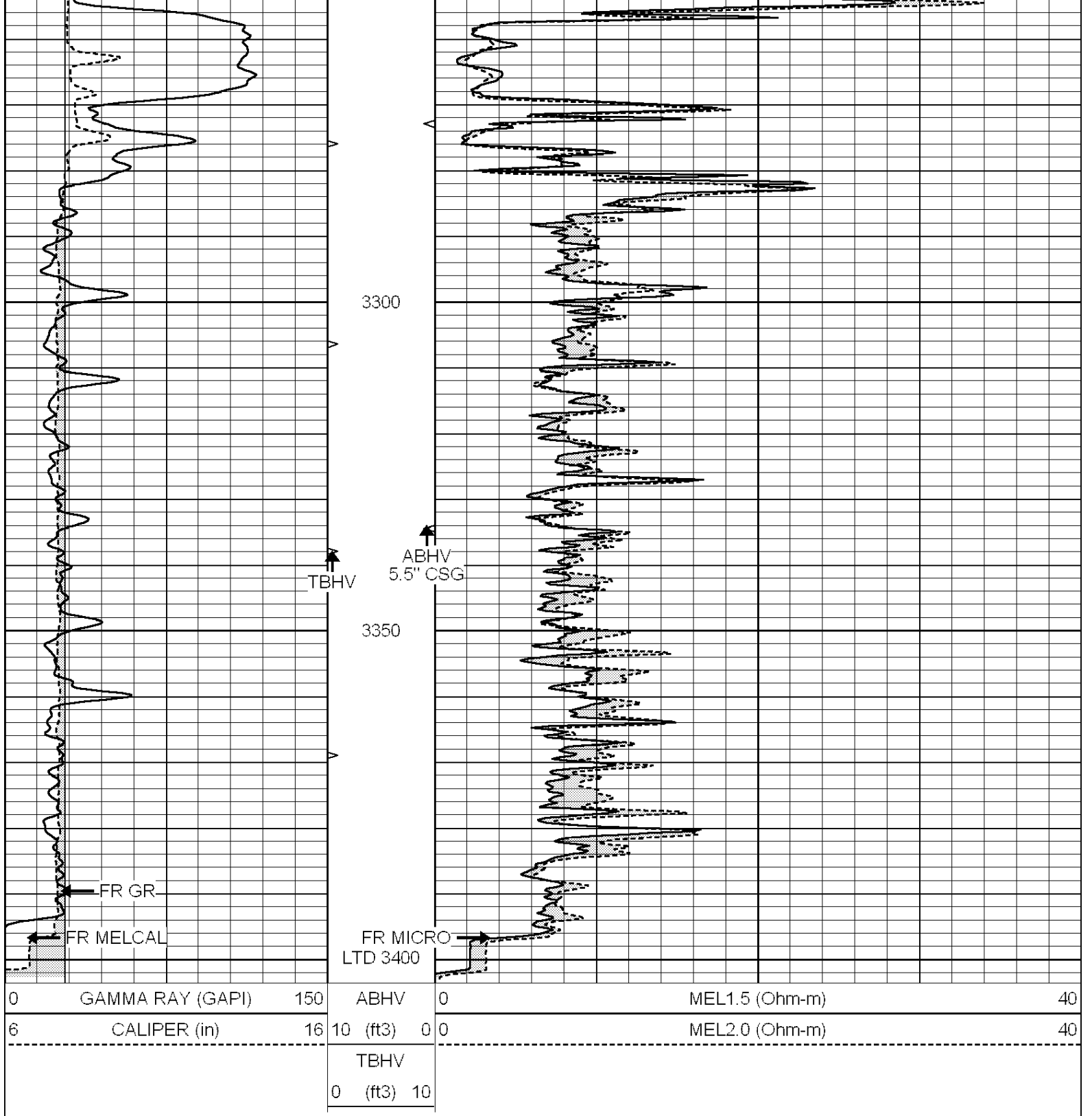
2750

2800









SUPERIOR  
Hays,  
Kansas

# REPEAT SECTION

Database File: 008060ddn.db  
 Dataset Pathname: pass4  
 Presentation Format: \_micro  
 Dataset Creation: Mon Mar 05 05:30:52 2012 by Log Open-Cased 090629  
 Charted by: Depth in Feet scaled 1:240

0	GAMMA RAY (GAPI)	150	ABHV	0	MEL1.5 (Ohm-m)	40
---	------------------	-----	------	---	----------------	----

TBHV  
0 (ft3) 10

