



**MIDWEST SURVEYS**  
 LOGGING - PERFORATING - CONSULTING SERVICES  
 P.O. Box 686, Osawatomie, KS 66064  
 913.755.2128

**GAMMA RAY / NEUTRON / CCL**

File No. \_\_\_\_\_

Company **Enerjex Kansas, Inc.**

Well **Alexander No. BSP-AL-18**

Field **Paola / Rantoul**

County **Franklin** State **Kansas**

Location **1835' FSL & 268' FWL**

Other Services **Perforate**

Sec 29 Twp 18S Rge 21E

Perforation Datum **GL** Elevation **NA**

Log Measured From **GL** K/B NA

Drilling Measured From **GL** D/F NA

Date **09-04-2013** G.L. NA

Run Number **One**

Depth Driller **840.0**

Depth Logger **783.5**

Bottom Logged Interval **782.5**

Top Log Interval **20.0**

Fluid Level **Full**

Type Fluid **Water**

Density / Viscosity **NA**

Salinity - PPM Cl **NA**

Max Recorded Temp **NA**

Estimated Cement Top **0.0**

Equipment No. **102** Location **Osawatomie**

Recorded By **Gary Windisch**

Witnessed By **Jay Schendel**

BORE-HOLE RECORD				CASING RECORD			
RUN No.	BIT FROM	TO	SIZE	WGT.	FROM	TO	
One	9.875"	20.0	7.00"	17.0#	0.0	20.0	
Two	5.625"	20.0	2.875"	6.5#	0.0	825.0	

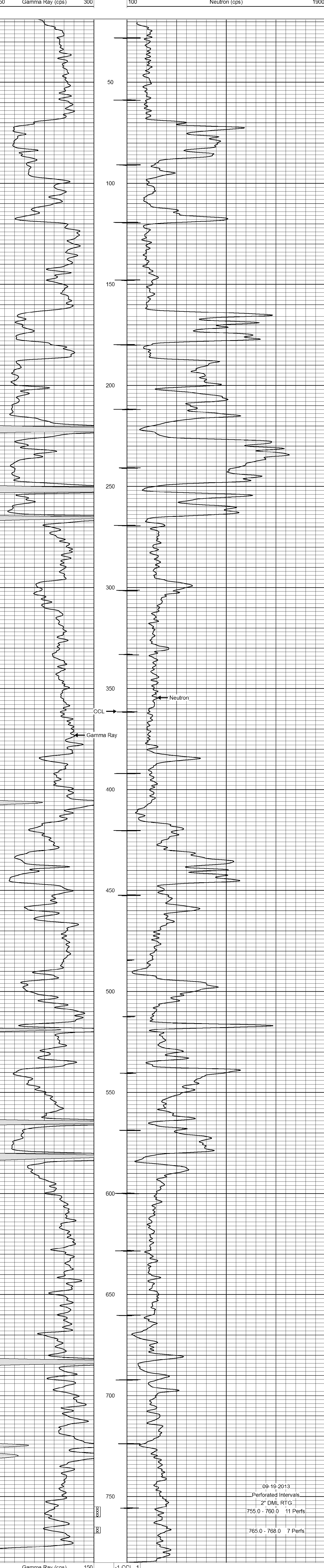
<<< Fold Here >>>

All interpretations are opinions based on inferences from electrical or other measurements and we cannot and do not guarantee the accuracy or correctness of any interpretation, and we shall not, except in the case of gross or willful negligence on our part, be liable or responsible for any loss, costs, damages, or expenses incurred or sustained by anyone resulting from any interpretation made by any of our officers, agents or employees. These interpretations are also subject to our general terms and conditions set out in our current Price Schedule.

Comments

Drilling Contractor :  
JTC Oil, Inc.

Database File: alexander18pa.db  
 Dataset Pathname: pass1  
 Presentation Format: gr-n-ccl  
 Dataset Creation: Wed Sep 04 15:14:42 2013 by Log SCH 111116  
 Charted by: Depth in Feet scaled 1:240



BORE-HOLE RECORD				CASING RECORD			
RUN No.	BIT FROM	TO	SIZE	WGT.	FROM	TO	
One	9.875"	20.0	7.00"	17.0#	0.0	20.0	
Two	5.625"	20.0	2.875"	6.5#	0.0	825.0	