



**DIGITAL LOG** (785) 625-3858

**Microresistivity  
Log**

API No. 15-051-26208-00-00

Company **Murfin Drilling Company, Inc.**  
 Well **Orth "E" #9**  
 Field **Stadelman**  
 County **Ellis** State **Kansas**

Location **1350' FNL / 1050' FWL**

Sec: **3** Twp: **14S** Rge: **19W**

Other Services  
 CNL / CDL  
 DIL / BHCS

Permanent Datum	Ground Level	Elevation 2179	K.B. 2184
Log Measured From	Kelly Bushing	5 Ft. Above Perm. Datum	D.F. 2179
Drilling Measured From	Kelly Bushing		G.L. 2179
Date	11/10/2011		
Run Number	Two		
Depth Driller	3935		
Depth Logger	3940		
Bottom Logged Interval	3939		
Top Log Interval	3050		
Casing Driller	8.625 @ 220		
Casing Logger	220		
Bit Size	7.875		
Type Fluid in Hole	Chemical		
Salinity, ppm CL	9600		
Density / Viscosity	9.1   69		
pH / Fluid Loss	10.5   6.8		
Source of Sample	Flowline		
Rm @ Meas. Temp	0.80 @ 60		
Rmf @ Meas. Temp	0.60 @ 60		
Rmc @ Meas. Temp	1.08 @ 60		
Source of Rmf / Rmc	Charts		
Rm @ BHT	0.42 @ 115		
Operating Rig Time	5 Hours		
Max Rec. Temp. F	115		
Equipment Number	15		
Location	Hays		
Recorded By	R. Barnhart		
Witnessed By	Paul Gunzelman		

<<< Fold Here >>>

All interpretations are opinions based on inferences from electrical or other measurements and we cannot and do not guarantee the accuracy or correctness of any interpretation, and we shall not, except in the case of gross or willful negligence on our part, be liable or responsible for any loss, costs, damages, or expenses incurred or sustained by anyone resulting from any interpretation made by any of our officers, agents or employees. These interpretations are also subject to our general terms and conditions set out in our current Price Schedule.

**Comments**

Thank you for using Log-Tech, Inc.  
 (785) 625-3858

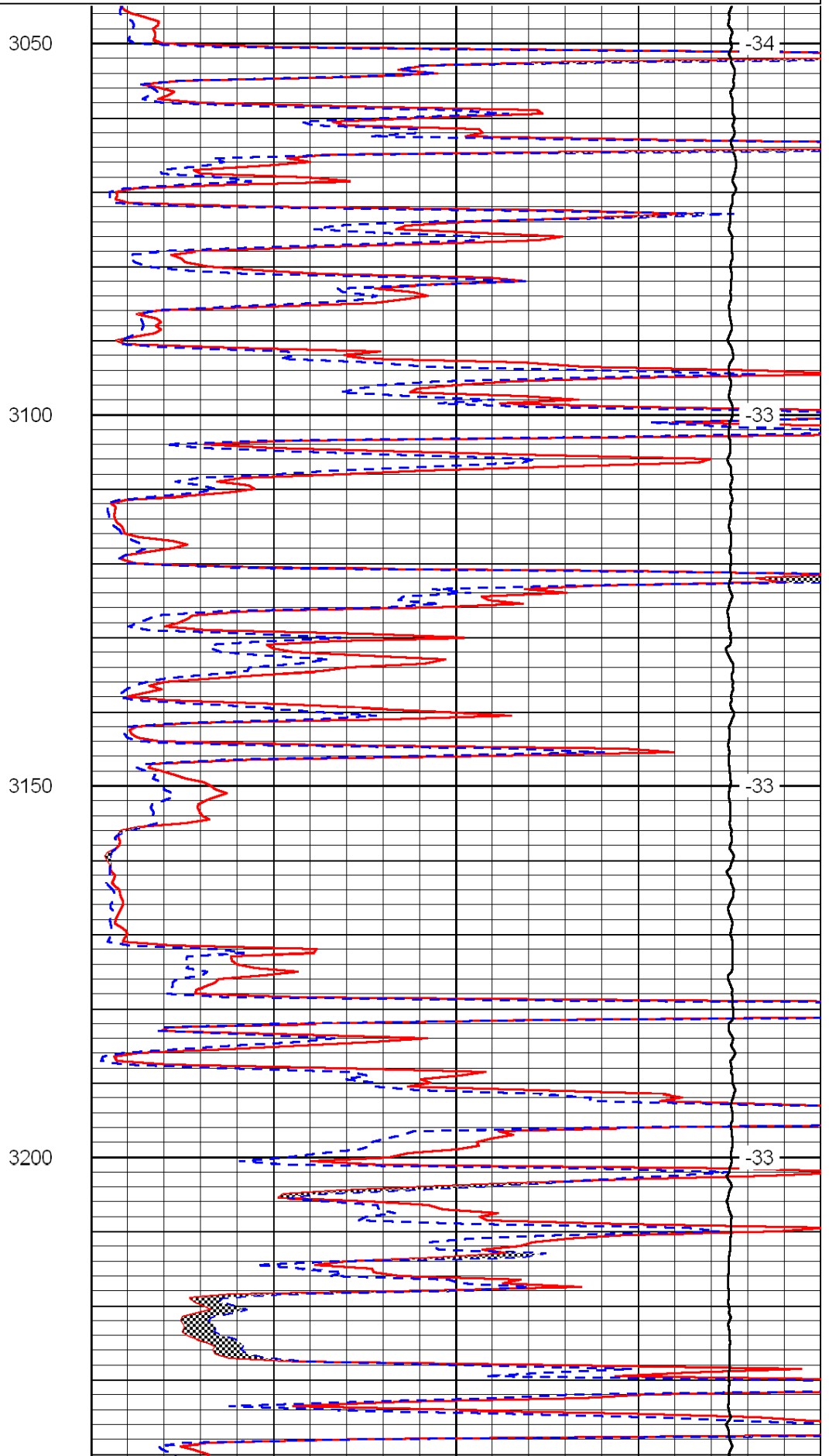
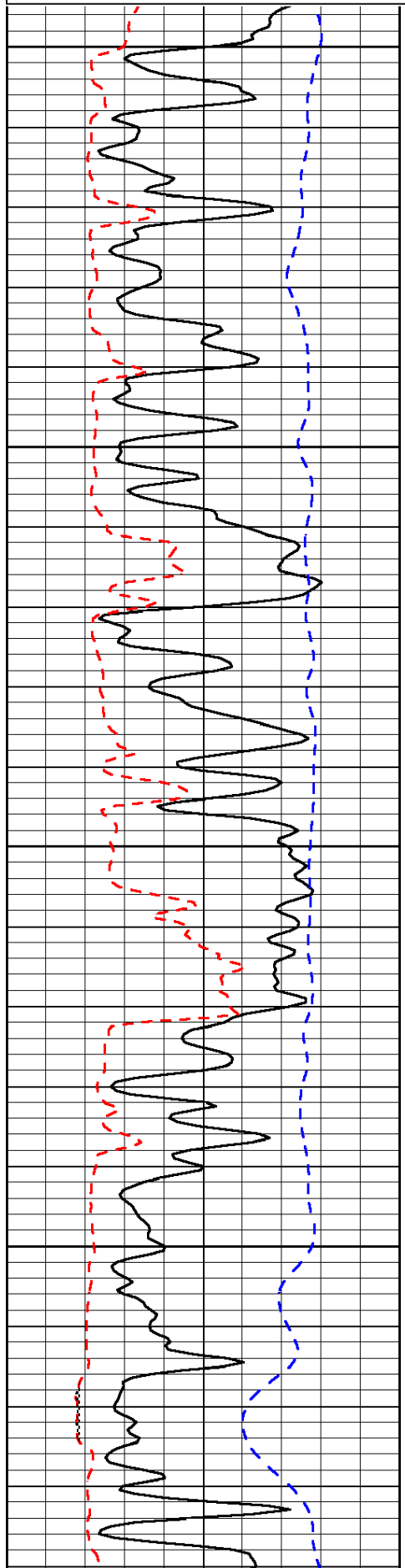
Hays, KS:  
 Yocemento Rd & Golf Course Rd:  
 1/2N, E into

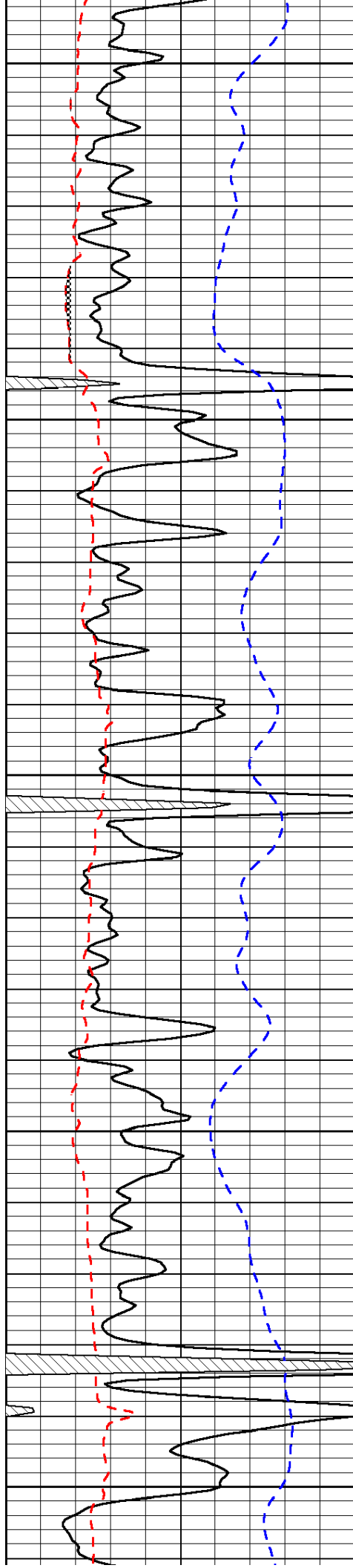
Database File: c:\warrior\data\murfin\_orth 'e' #9\murfinhd.db  
 Dataset Pathname: dil/mrfmain  
 Presentation Format: micro  
 Dataset Creation: Thu Nov 10 19:57:40 2011  
 Charted by: Depth in Feet scaled 1:240

0	Gamma Ray	150
6	Micro Log Caliper (GAPI)	16
-200	SP (mV)	0

0	Micro Inverse 1 X 1	40
0	Micro Normal 2"	40
15000	Line Weight	0

LSPD





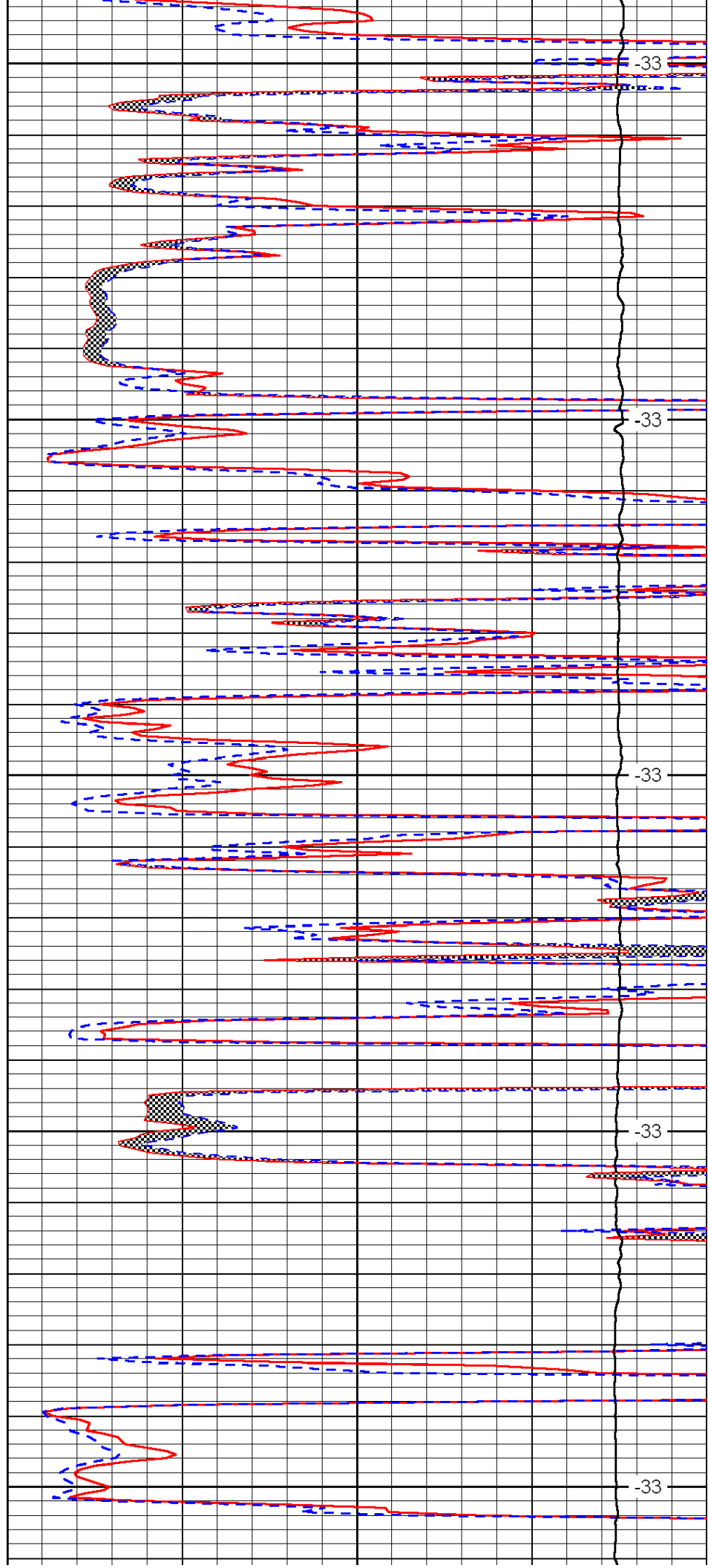
3250

3300

3350

3400

3450



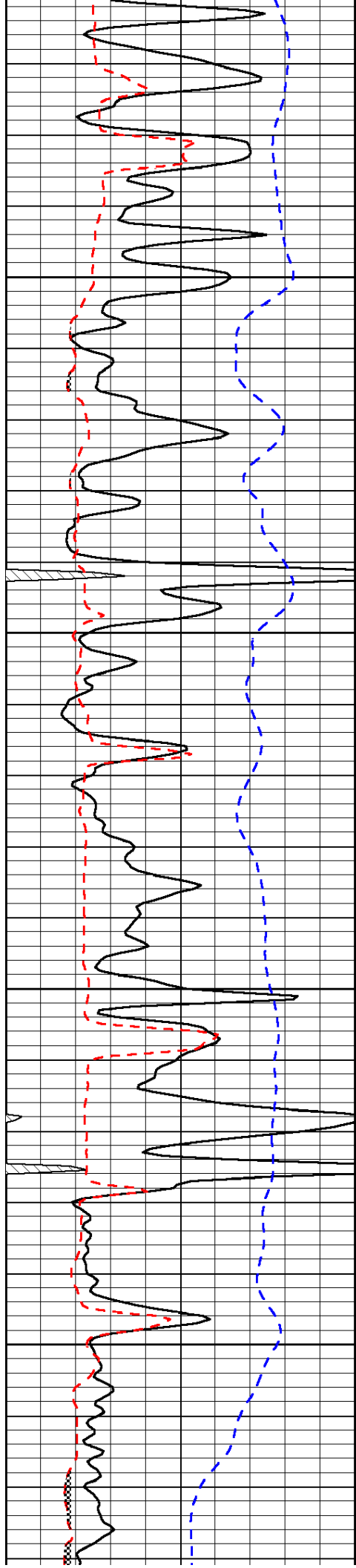
-33

-33

-33

-33

-33

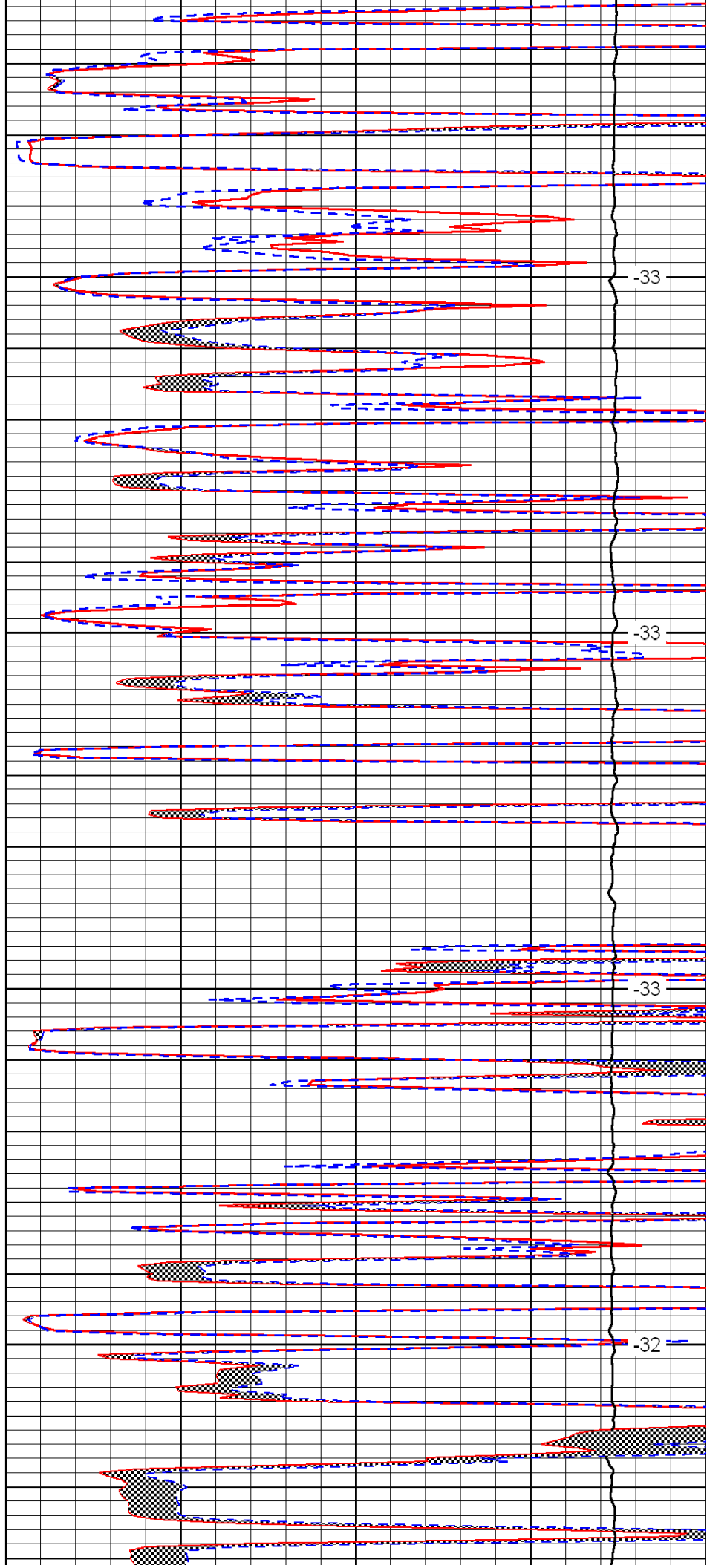


3500

3550

3600

3650

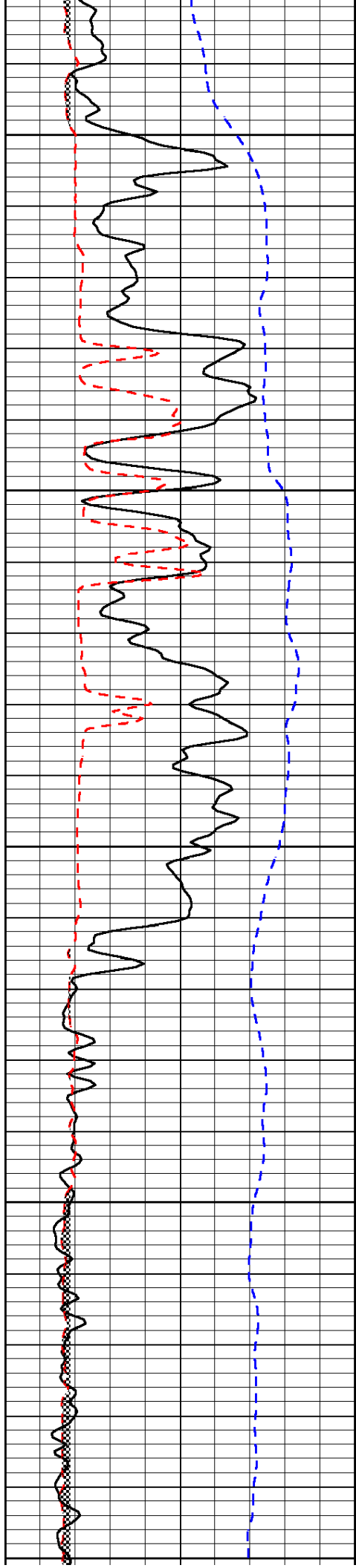


-33

-33

-33

-32



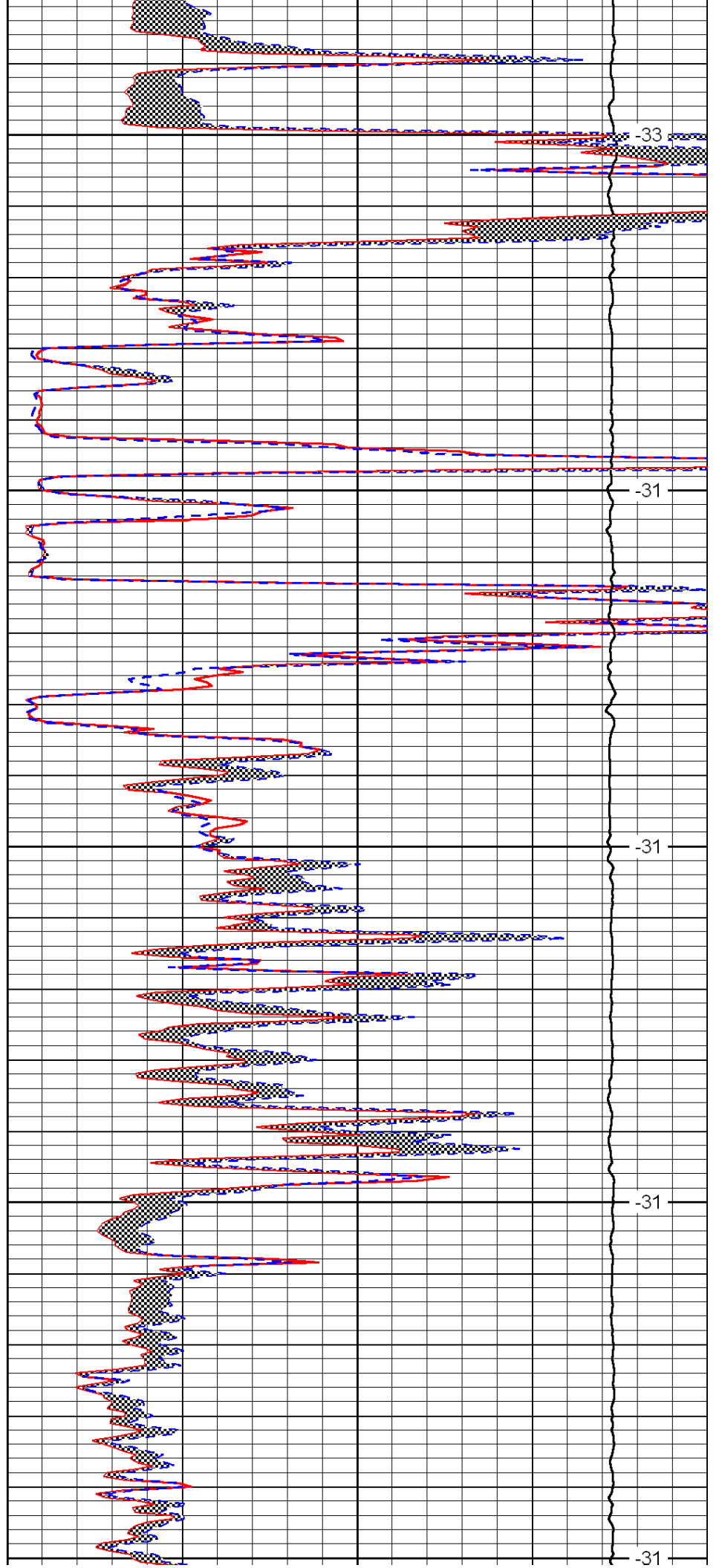
3700

3750

3800

3850

3900



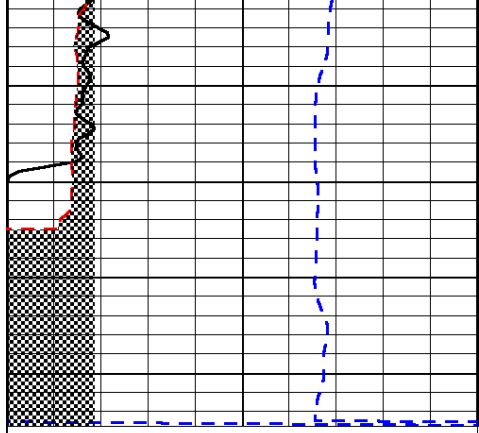
-33

-31

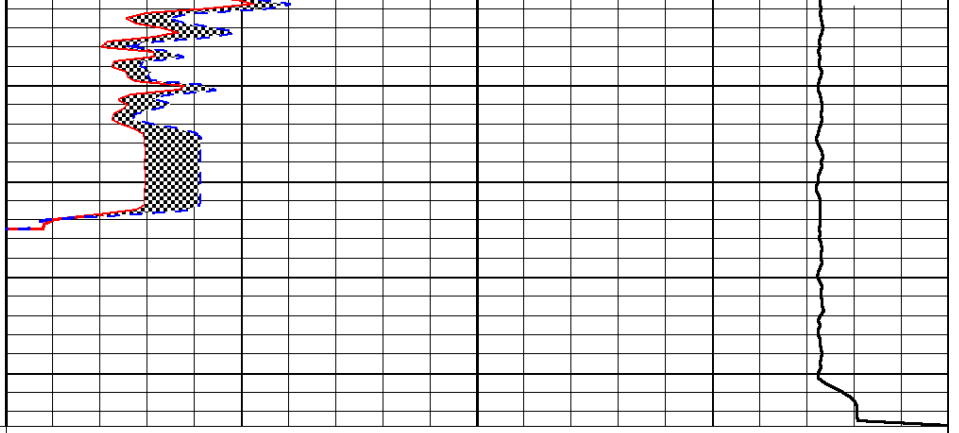
-31

-31

-31



0	Gamma Ray	150
6	Micro Log Caliper (GAPI)	16
-200	SP (mV)	0



0	Micro Inverse 1 X 1	40
0	Micro Normal 2"	40
15000	Line Weight	0

LSPD