



DIGITAL LOG (785) 625-3858

Borehole Compensated  
Sonic Log

15-051-26208-00-00

API No. \_\_\_\_\_  
 Company **Murfin Drilling Company, Inc.**  
 Well **Orth "E" #9**  
 Field **Stadelman**  
 County **Ellis** State **Kansas**  
 Location **1350' FNL / 1050' FWL**  
 Sec: **3** Twp: **14S** Rge: **19W**  
 Permanent Datum **Ground Level** Elevation **2179**  
 Log Measured From **Kelly Bushing** **5** Ft. Above Perm. Datum  
 Drilling Measured From **Kelly Bushing**  
 Date **11/10/2011**  
 Run Number **Two**  
 Type Log **BHC Sonic**  
 Depth Driller **3935**  
 Depth Logger **3940**  
 Bottom Logged Interval **3929**  
 Top Logged Interval **200**  
 Type Fluid In Hole **Chemical**  
 Salinity, PPM CL **9600**  
 Density **9.1**  
 Level **Full**  
 Max. Rec. Temp. F **115**  
 Operating Rig Time **5** Hours  
 Equipment -- Location **15** Days  
 Recorded By **R. Barnhart**  
 Witnessed By **Paul Gunzelman**

Other Services  
DIL  
MEL / BHCS  
Elevation  
K.B. 2184  
D.F. \_\_\_\_\_  
G.L. 2179

Borehole Record				Casing Record			
Run No.	Bit	From	To	Size	Wgt.	From	To
1	12.25	00	220	8.625	24#	00	220
2	7.875	220	3935				

<<< Fold Here >>>

All interpretations are opinions based on inferences from electrical or other measurements and we cannot and do not guarantee the accuracy or correctness of any interpretation, and we shall not, except in the case of gross or willful negligence on our part, be liable or responsible for any loss, costs, damages, or expenses incurred or sustained by anyone resulting from any interpretation made by any of our officers, agents or employees. These interpretations are also subject to our general terms and conditions set out in our current Price Schedule.

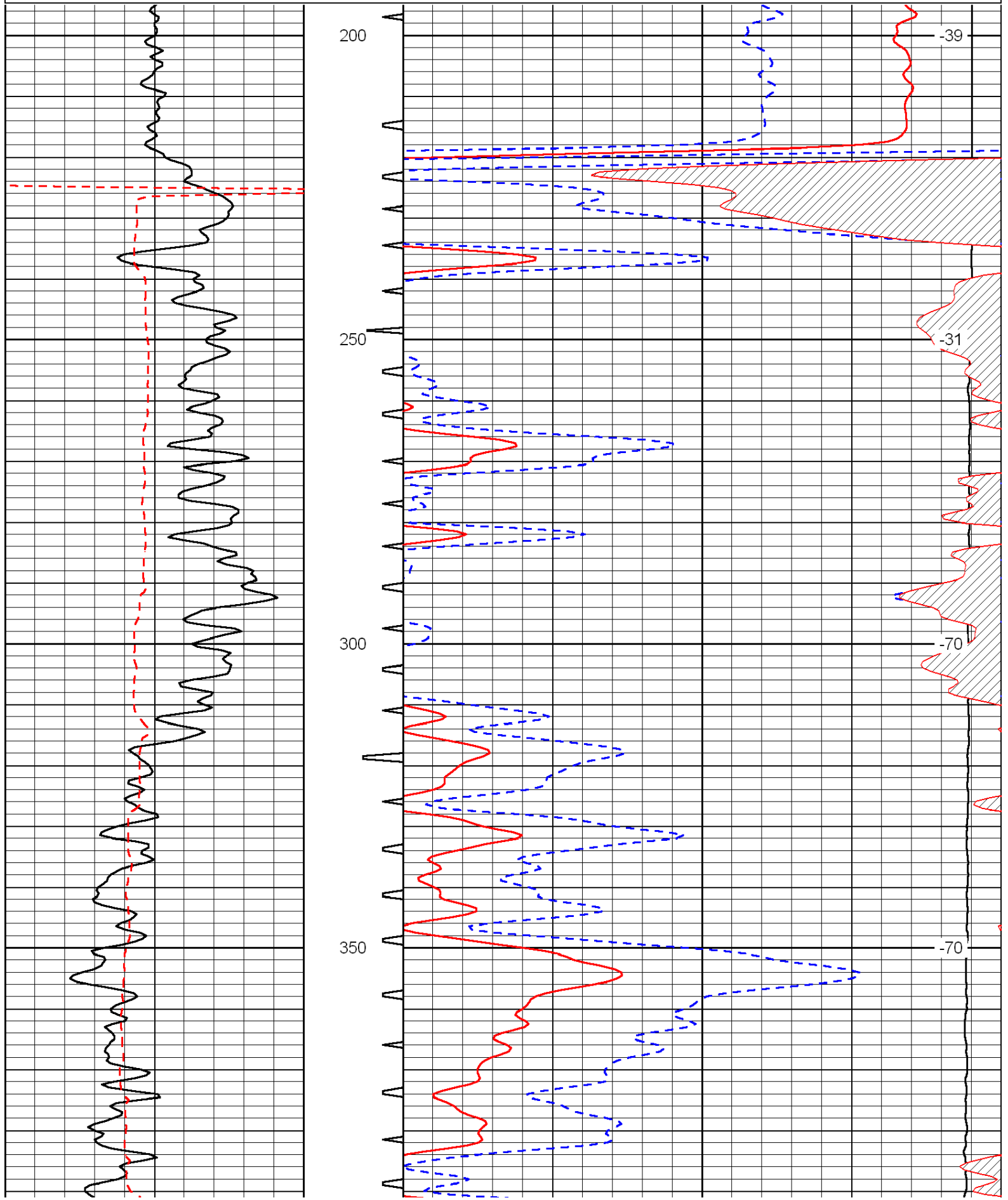
Comments

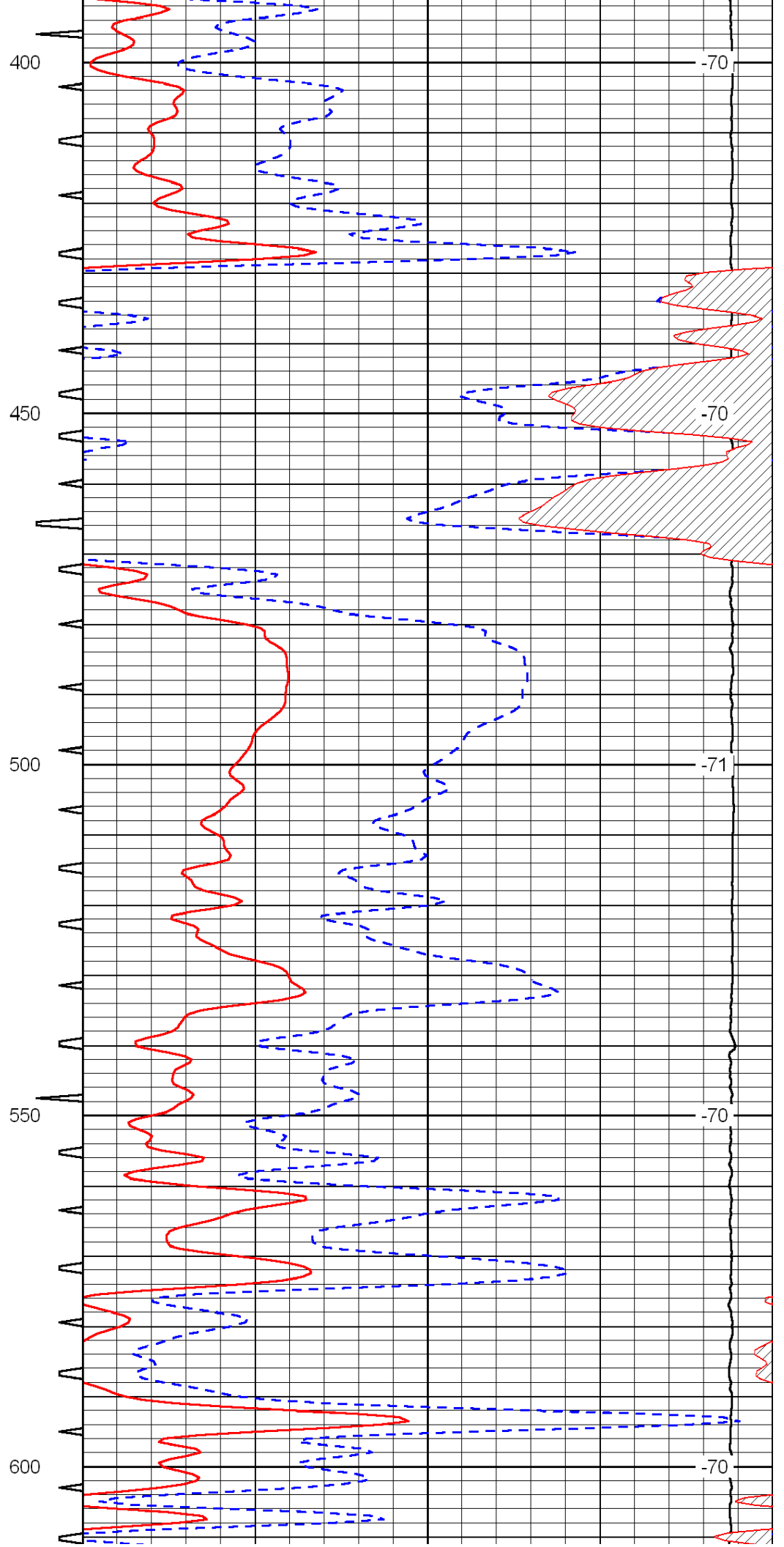
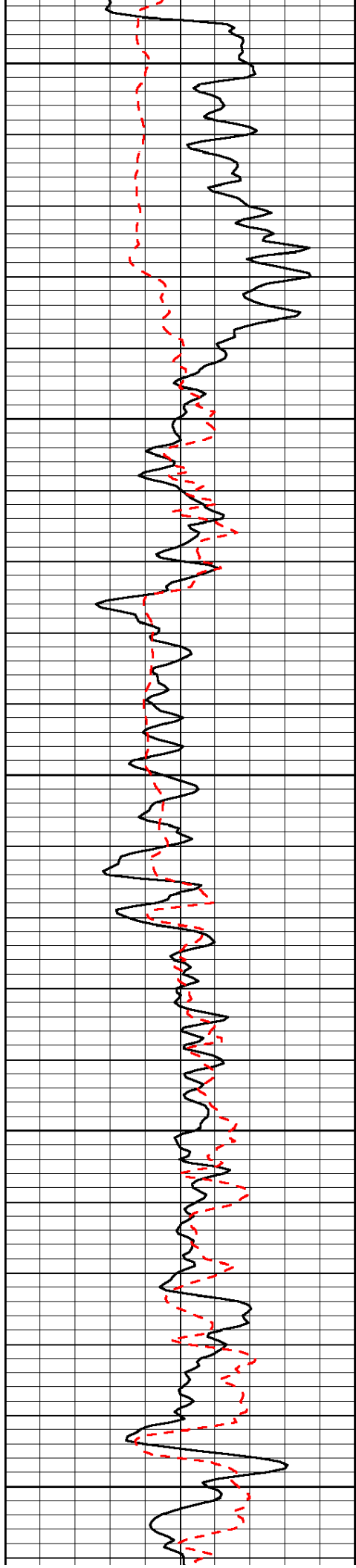
Thank you for using Log-Tech, Inc.  
 (785) 625-3858  
 Hays, KS:  
 Yocemento Rd & Golf Course Rd:  
 1/2N, E into

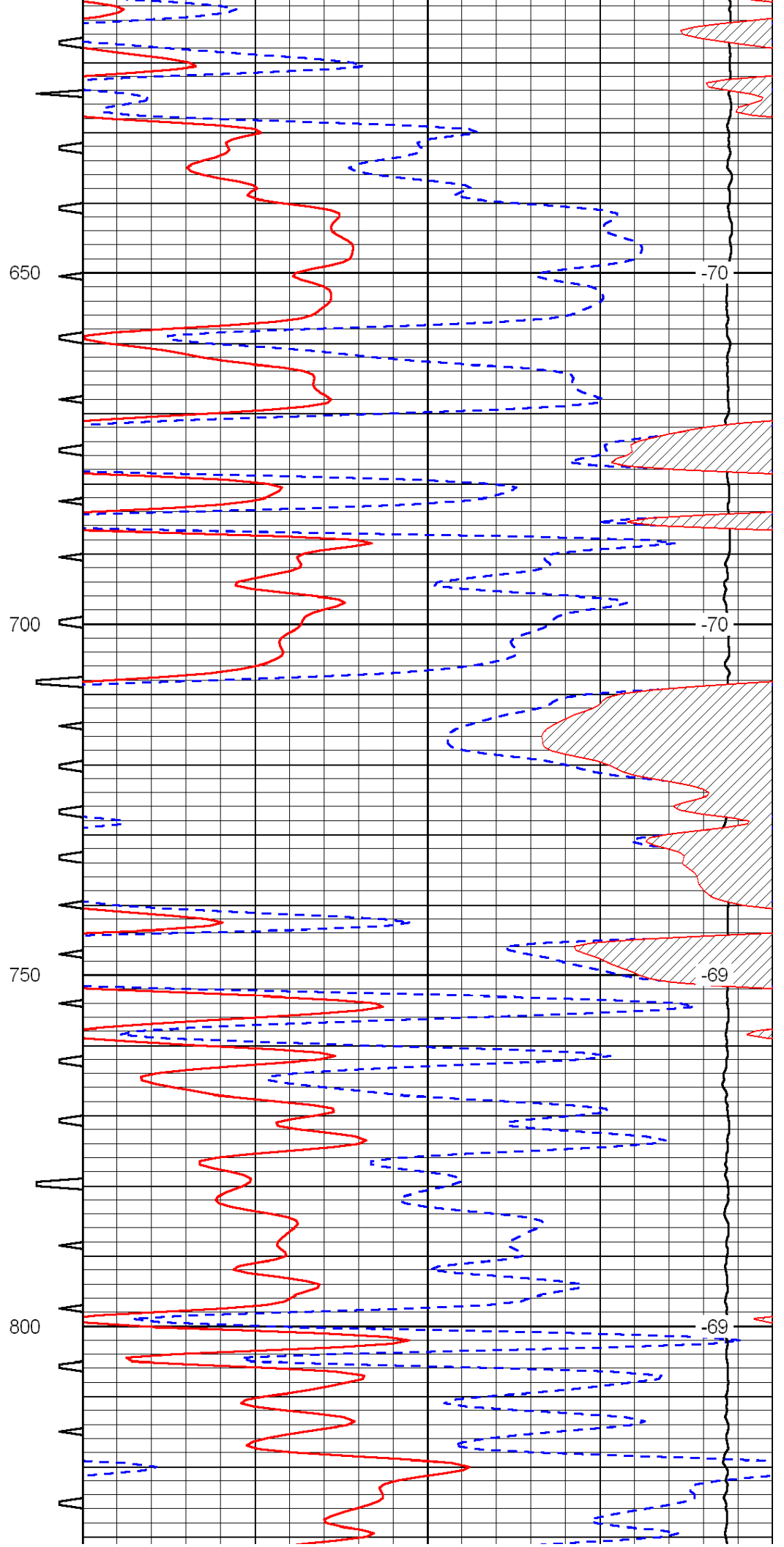
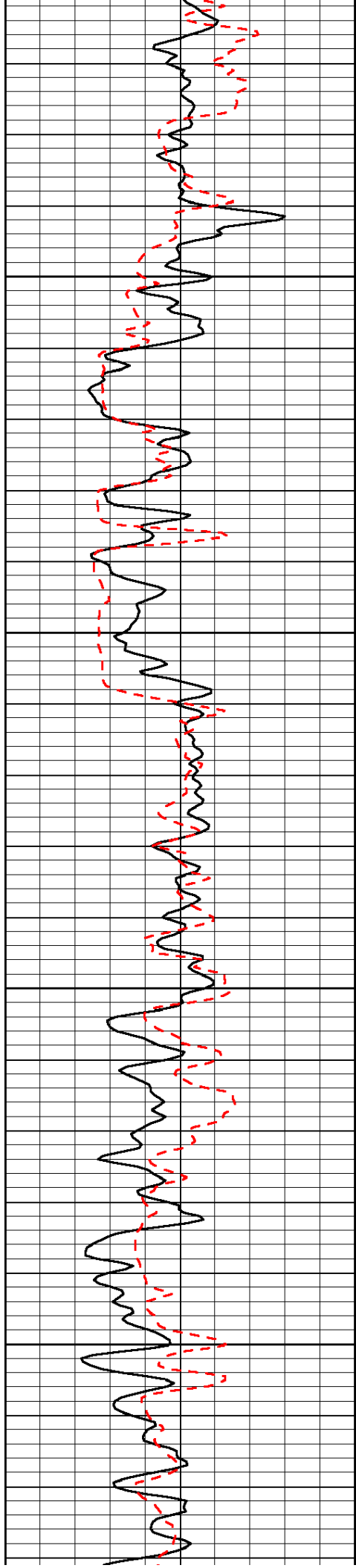
Database File: c:\warrior\data\murfin\_orth 'e' #9\murfinhd.db  
 Dataset Pathname: dil/mrfmain  
 Presentation Format: sonic  
 Dataset Creation: Thu Nov 10 19:57:40 2011  
 Charted by: Depth in Feet scaled 1:240

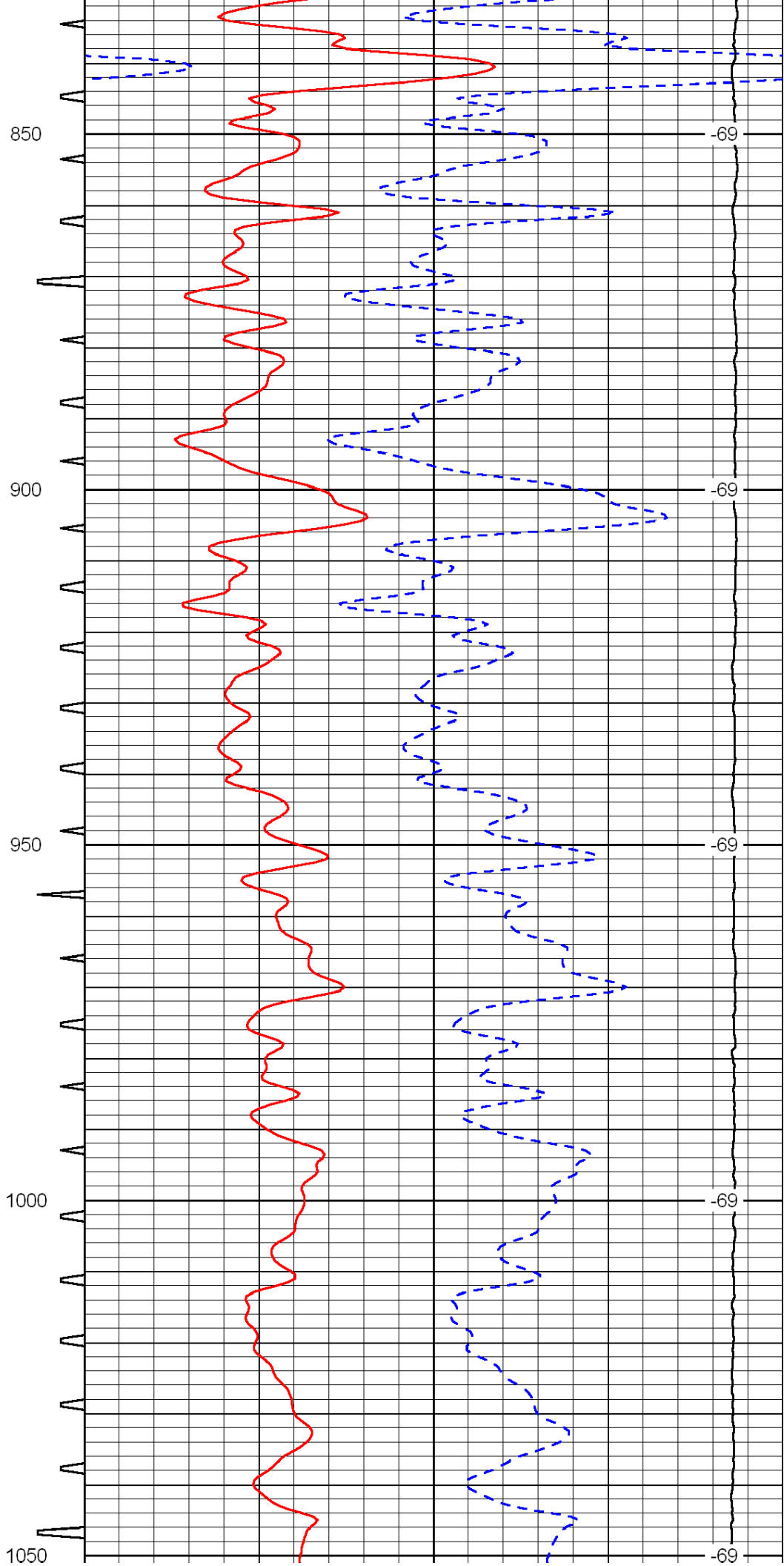
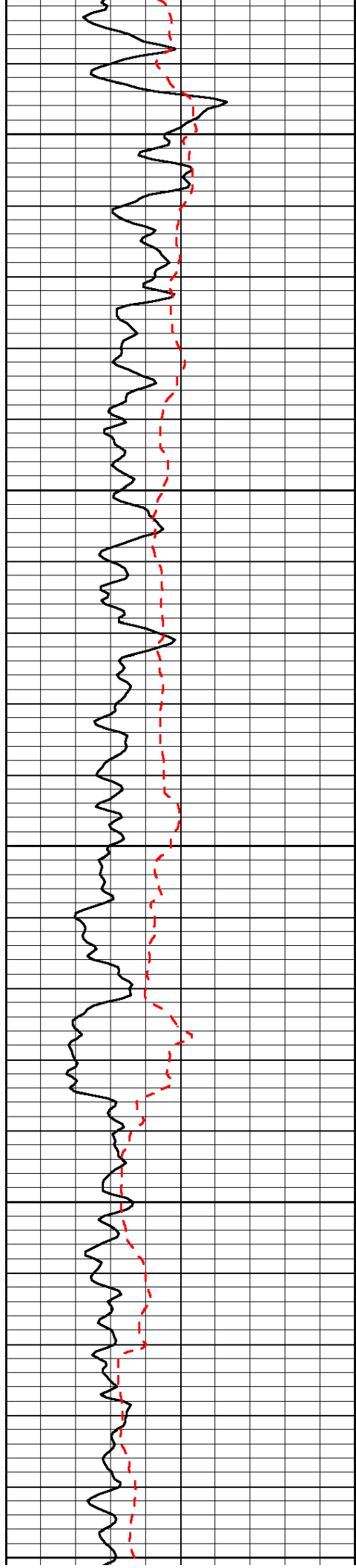
0	Gamma Ray	150	Sonic Int	140	Delta Time (usec/ft)	40
150	Gamma Ray	300	5	0	SPOR	-10
6	Caliper (GAPI)	16		15000	LTEN (lb)	0

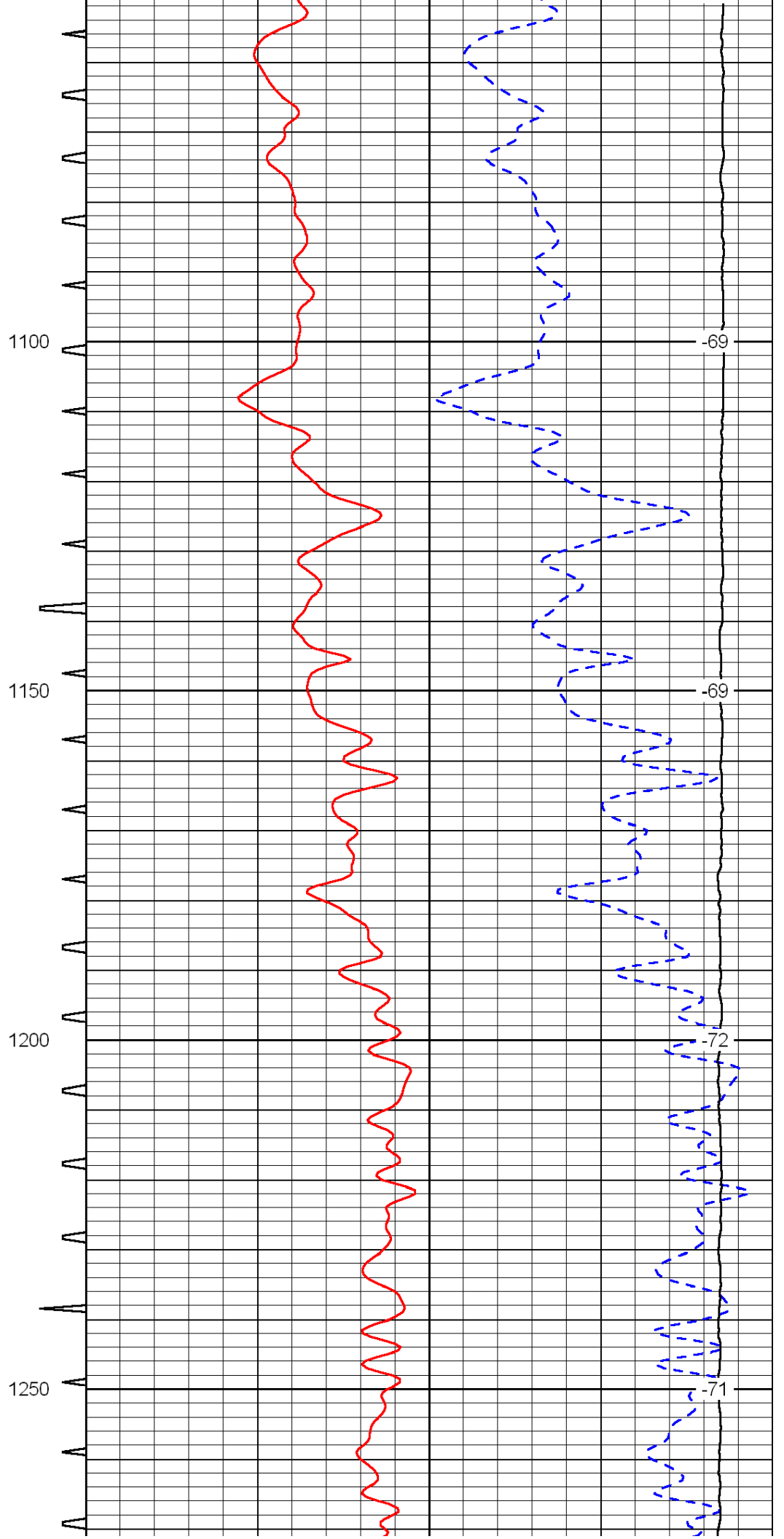
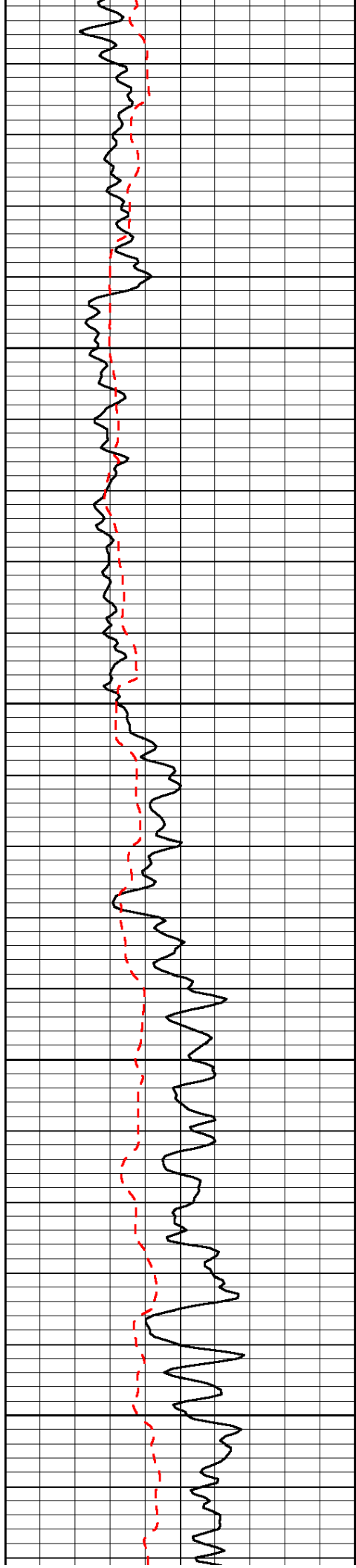
LSPD

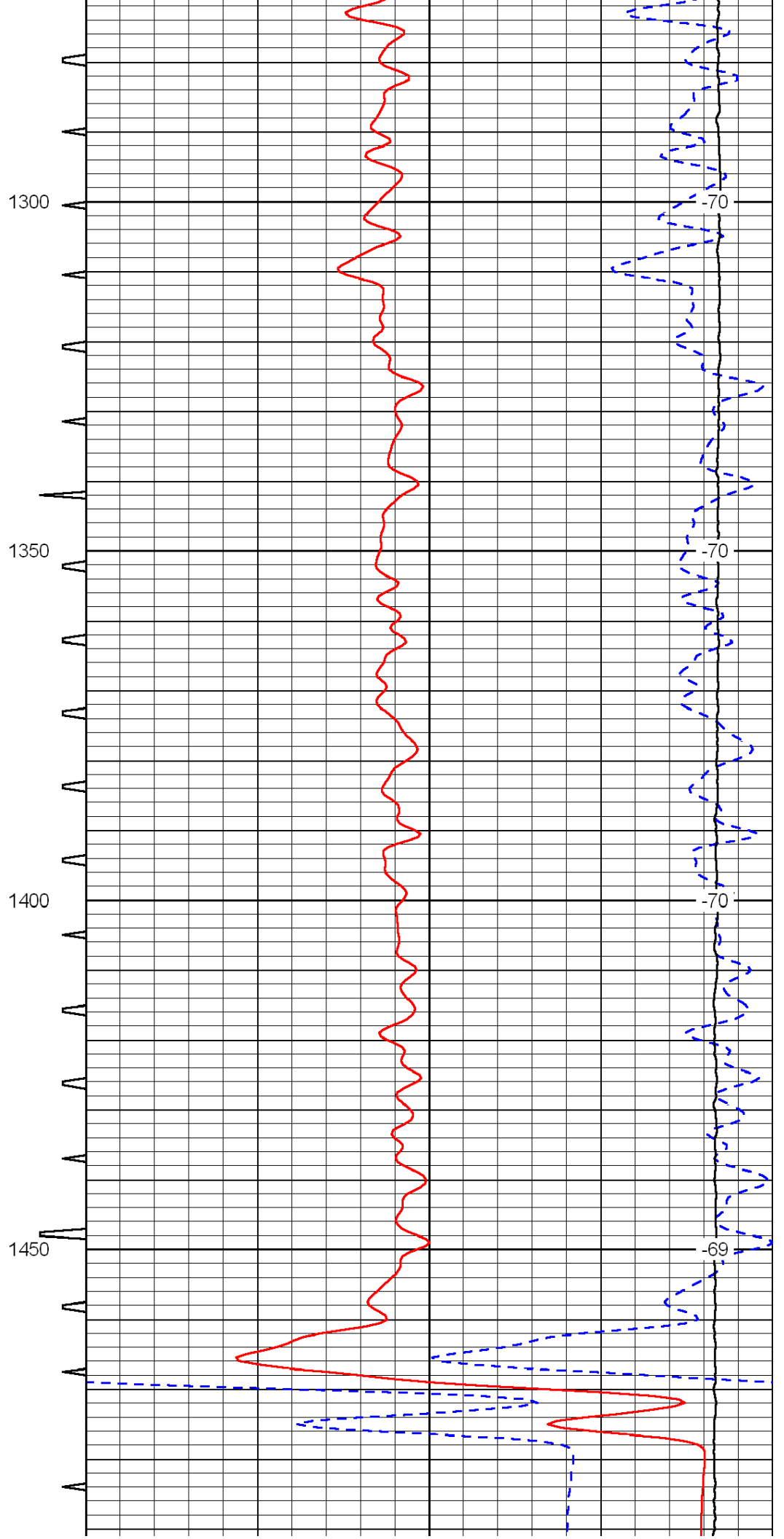
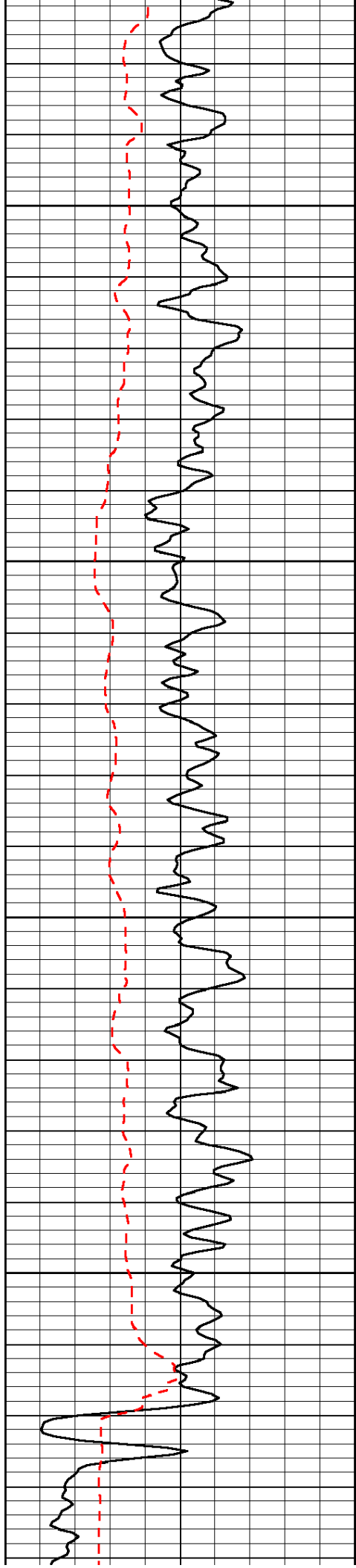


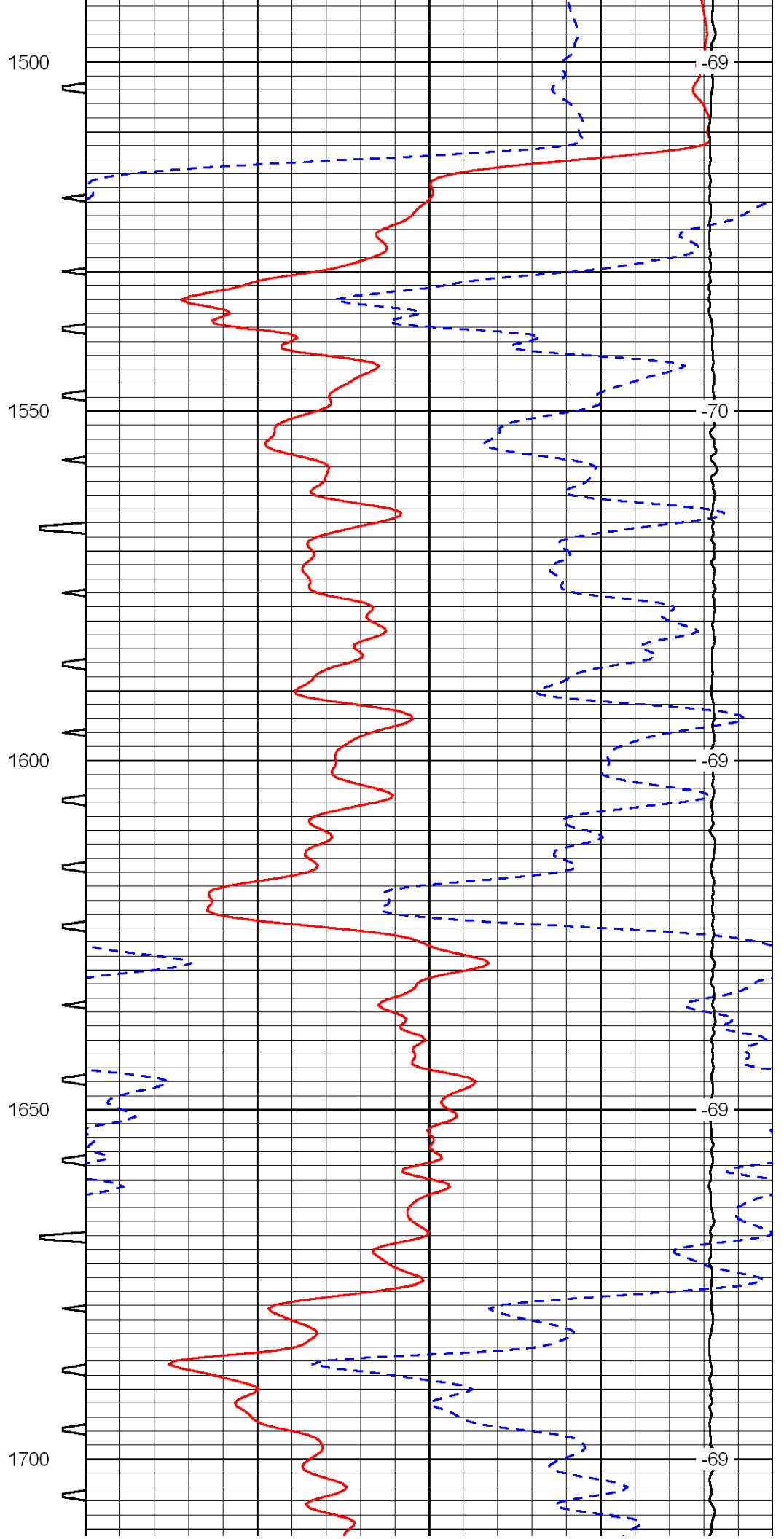
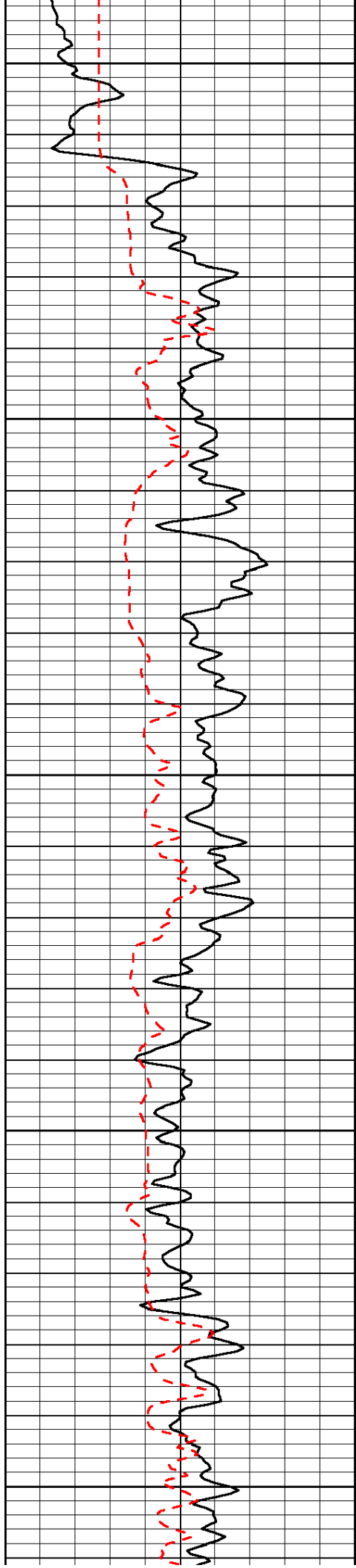




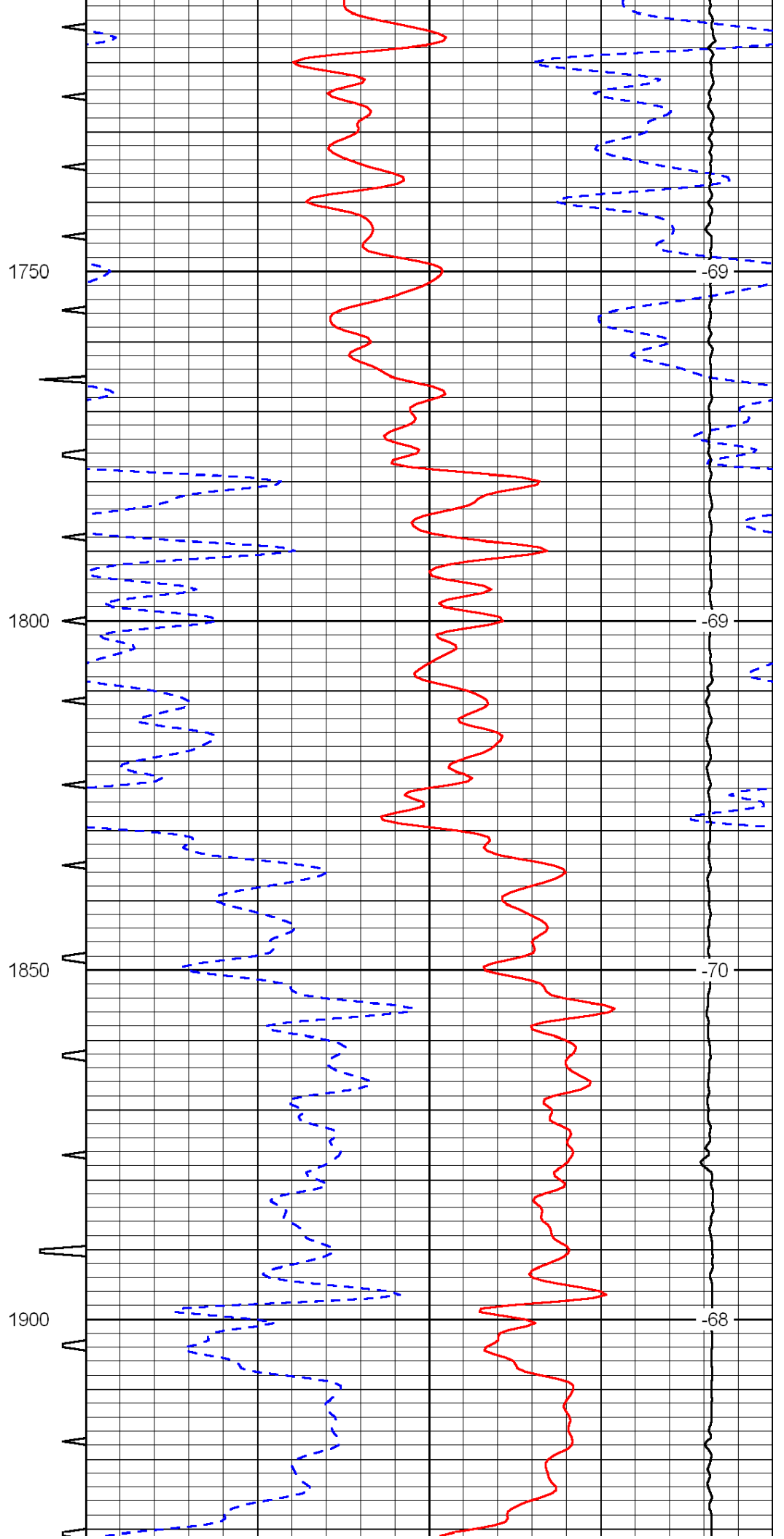
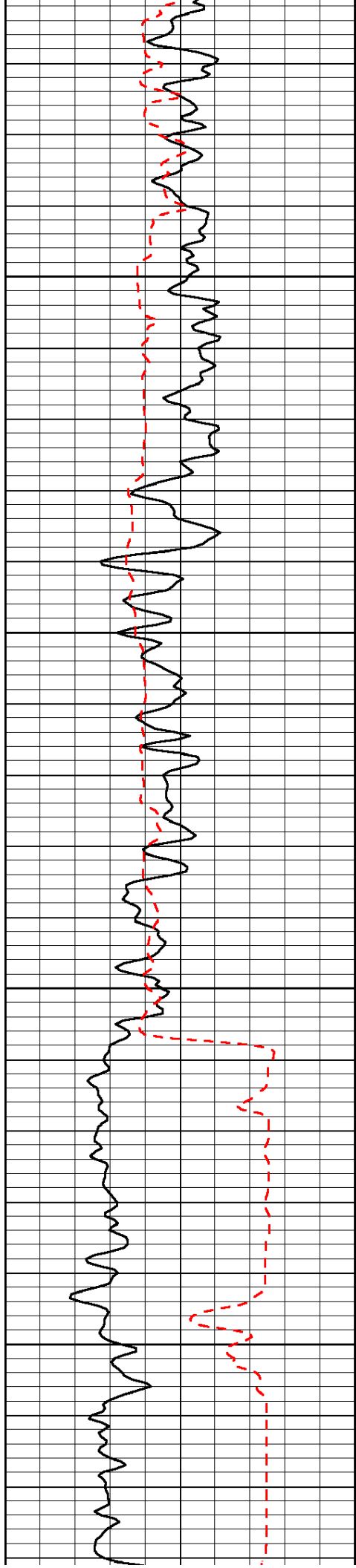


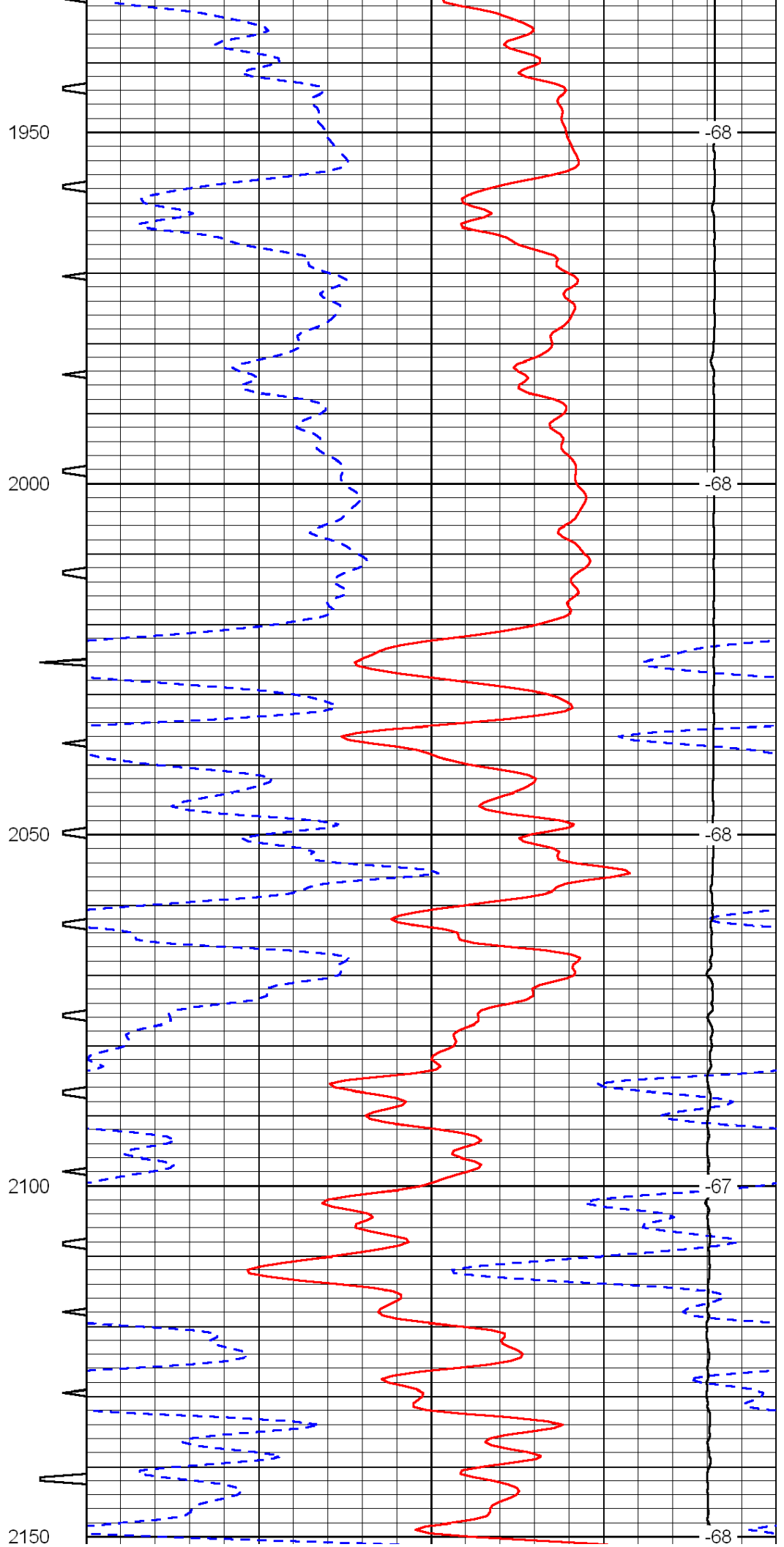
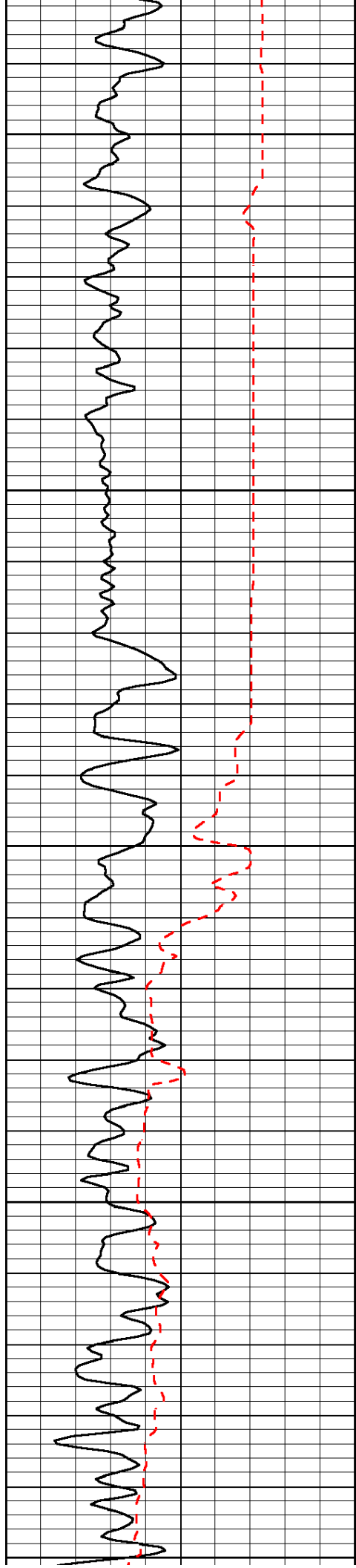


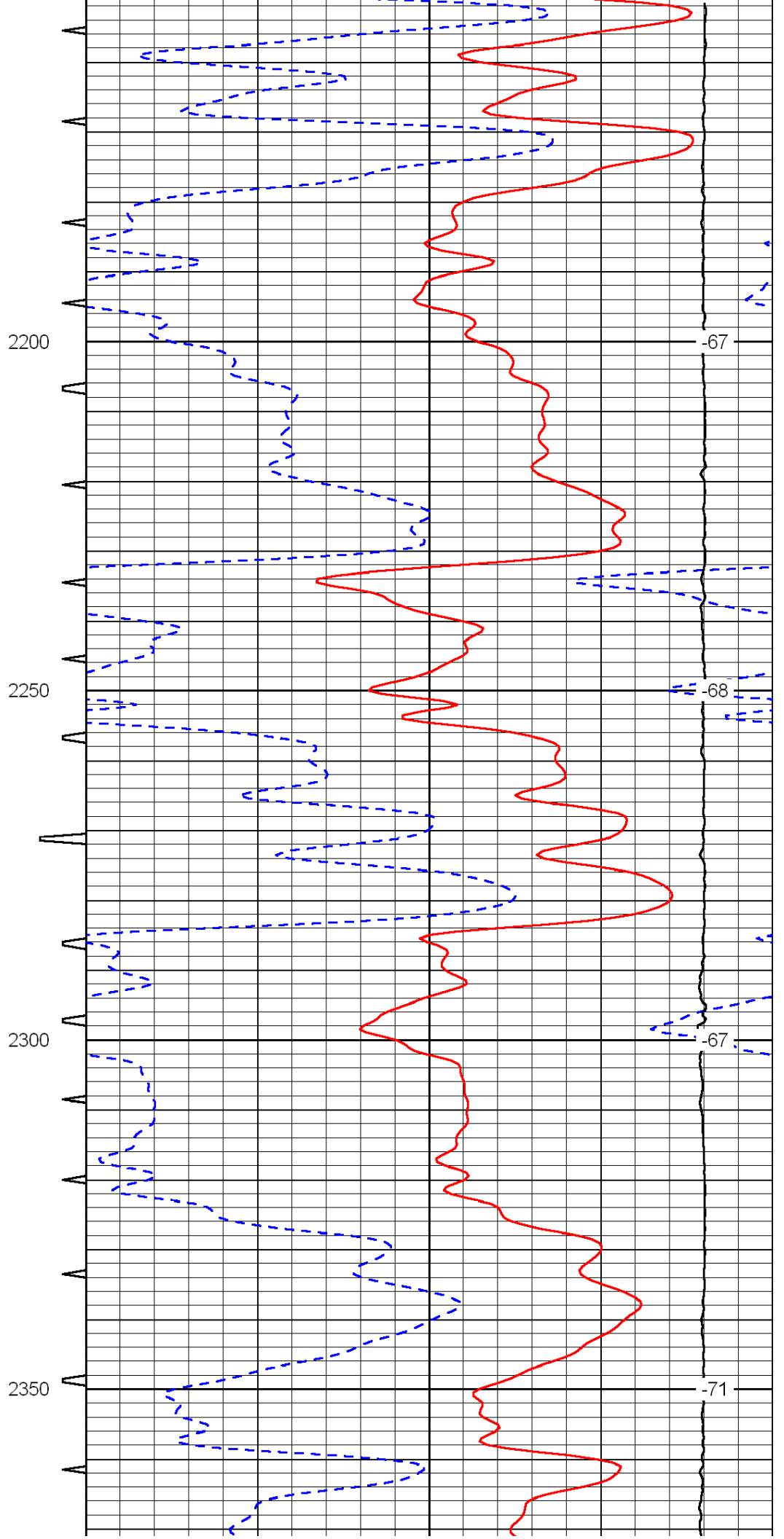
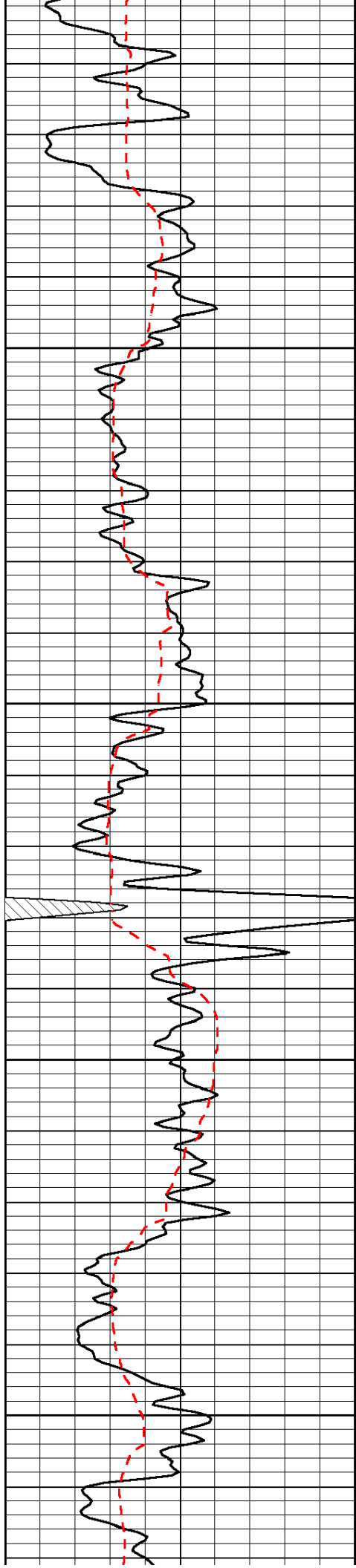


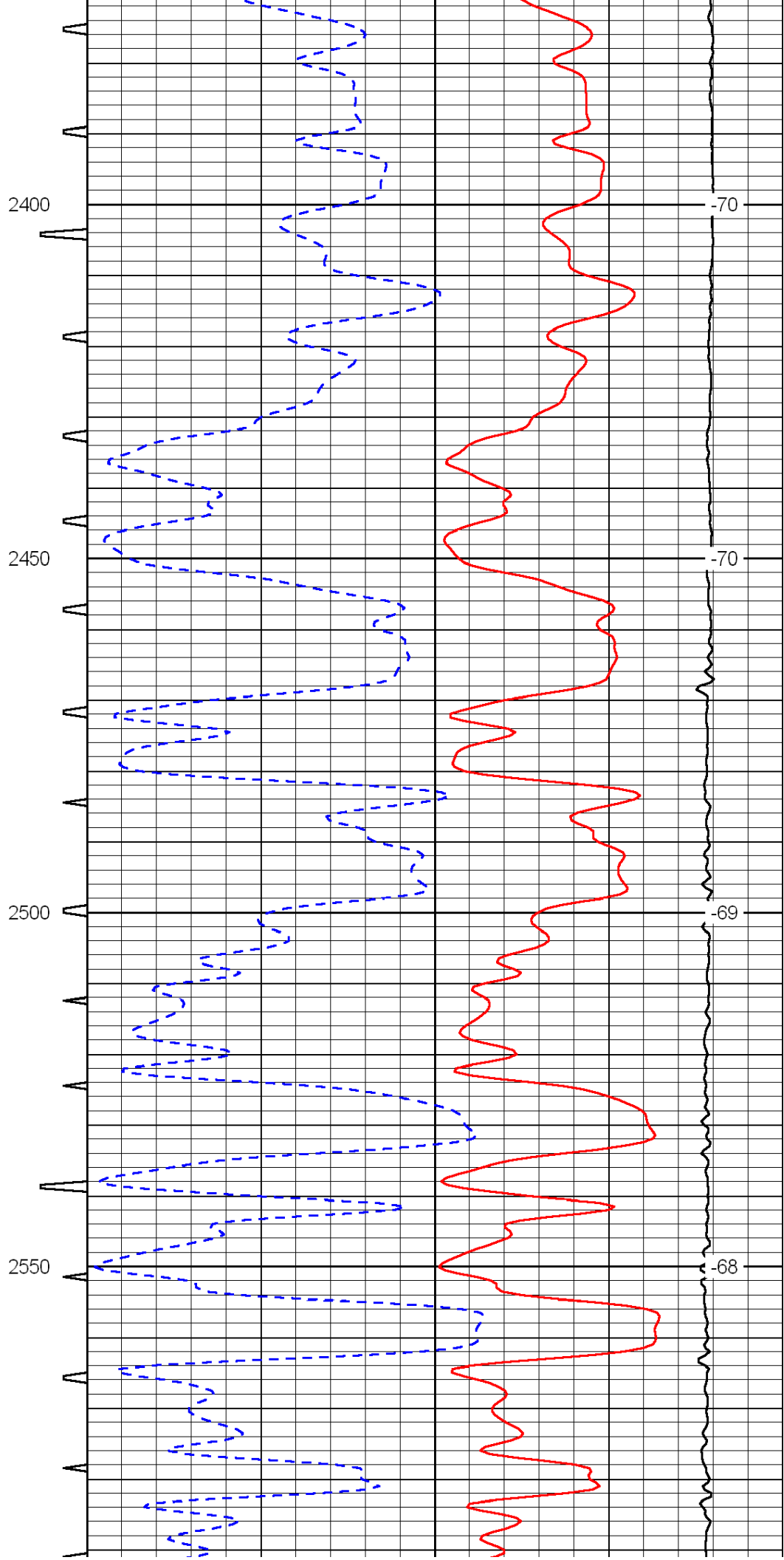
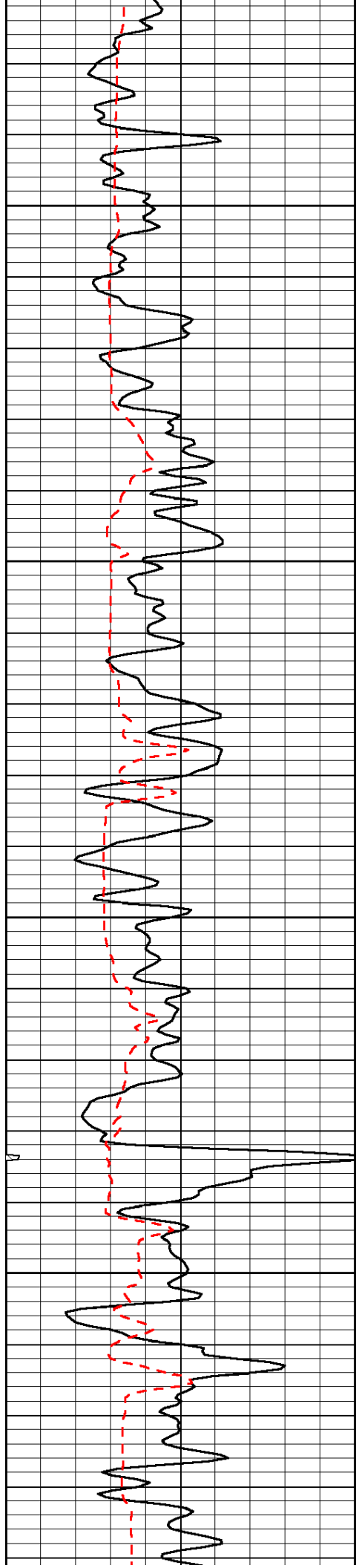


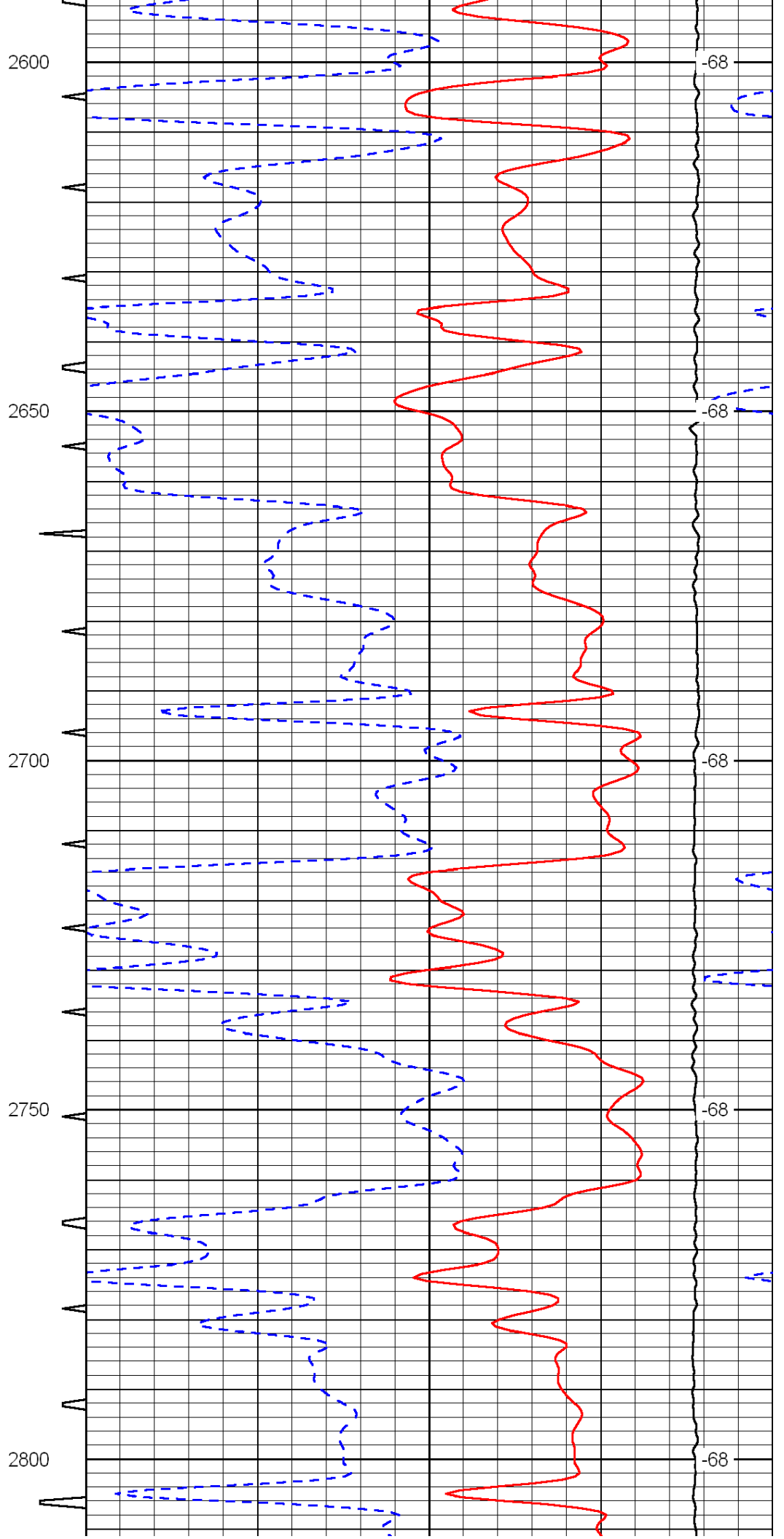
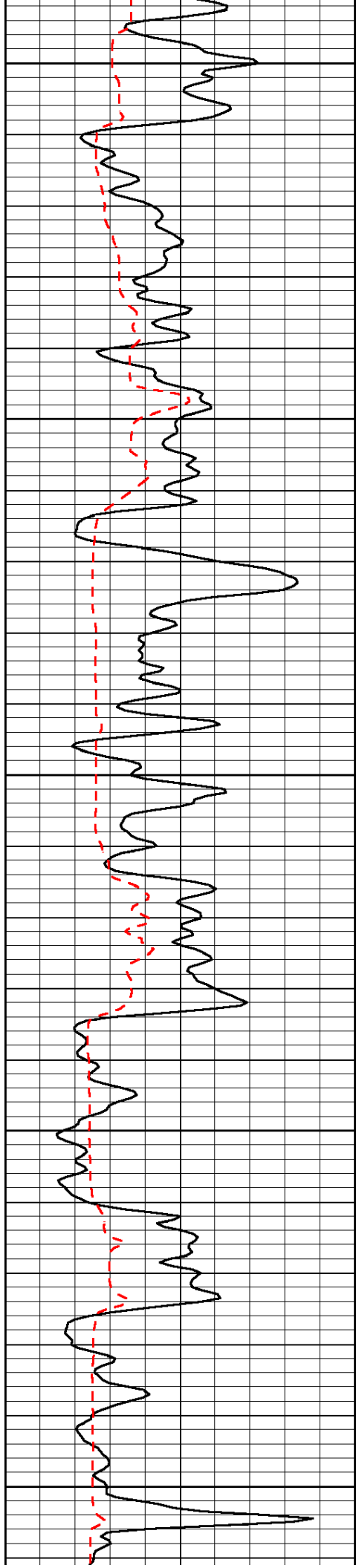


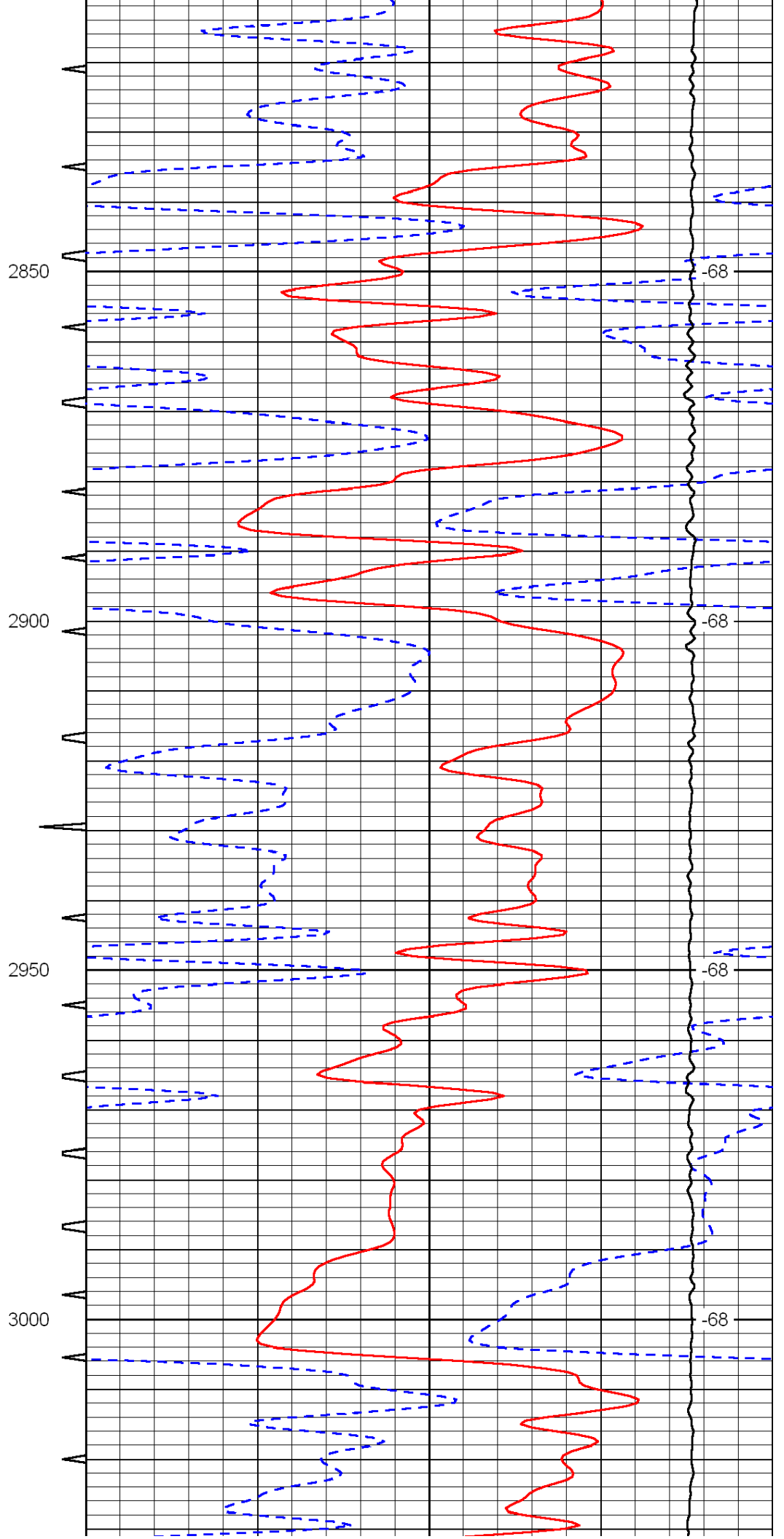
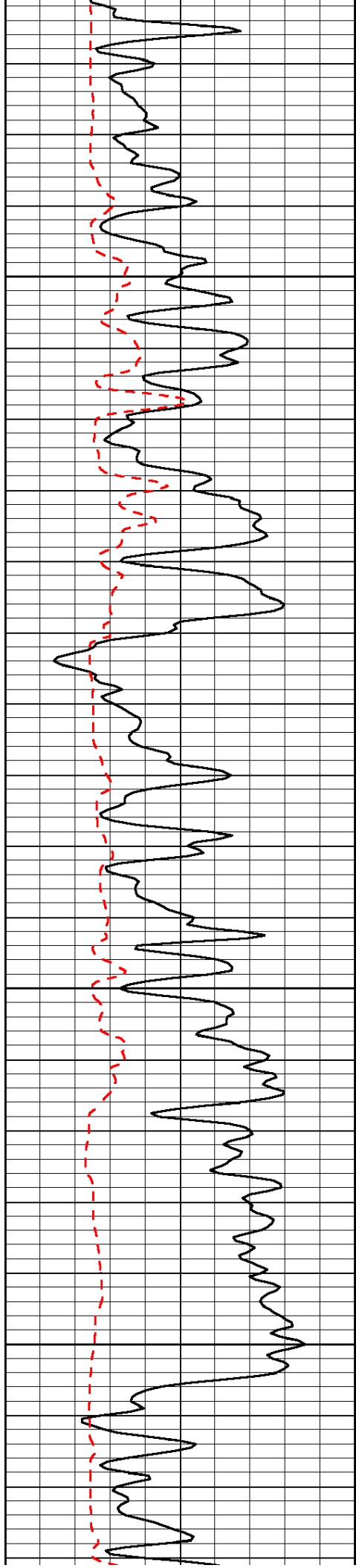


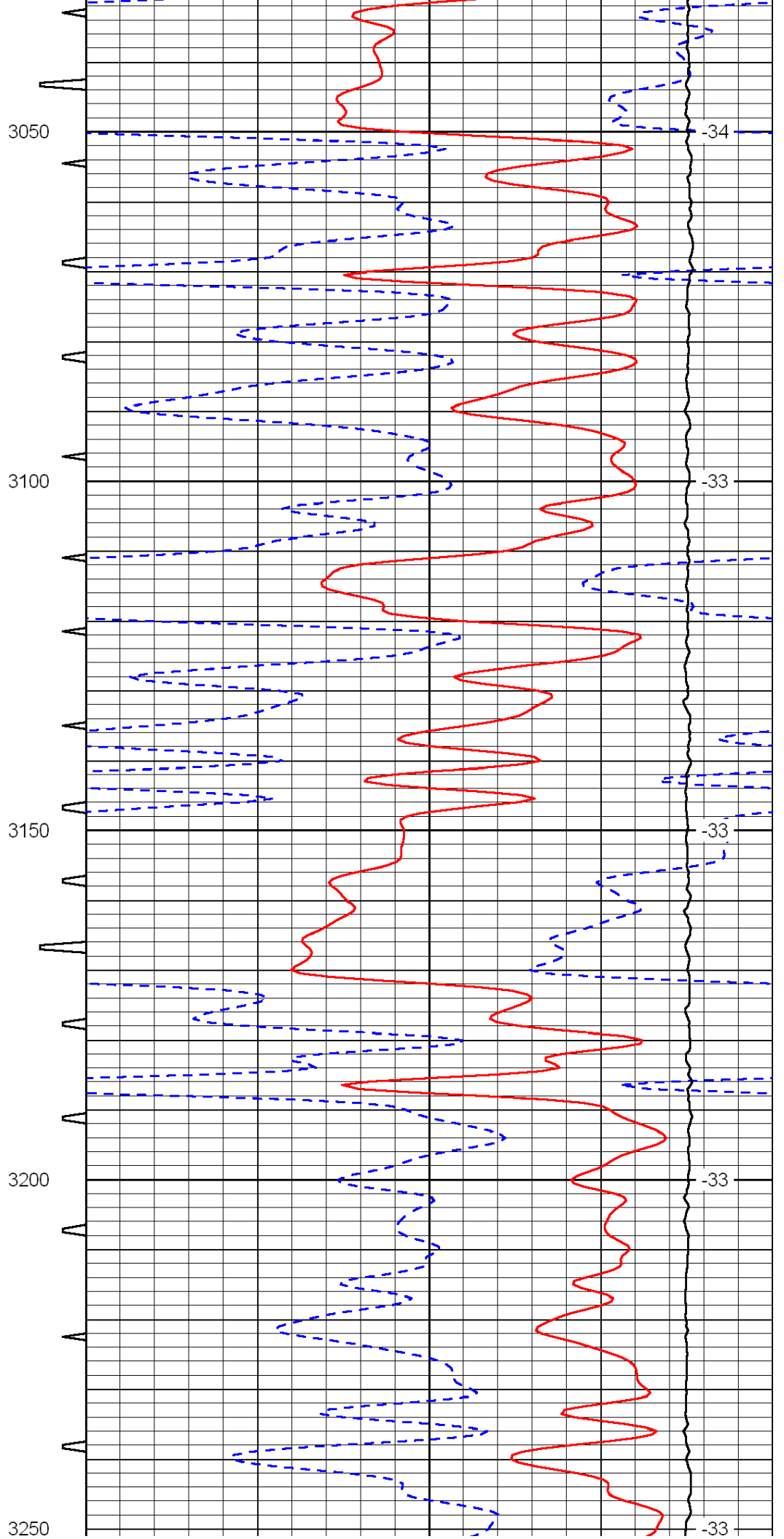
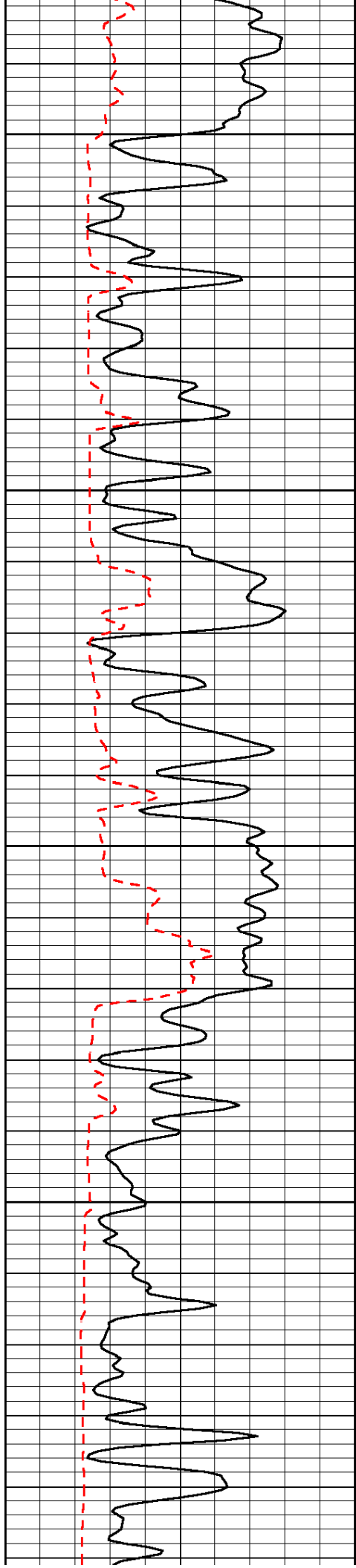


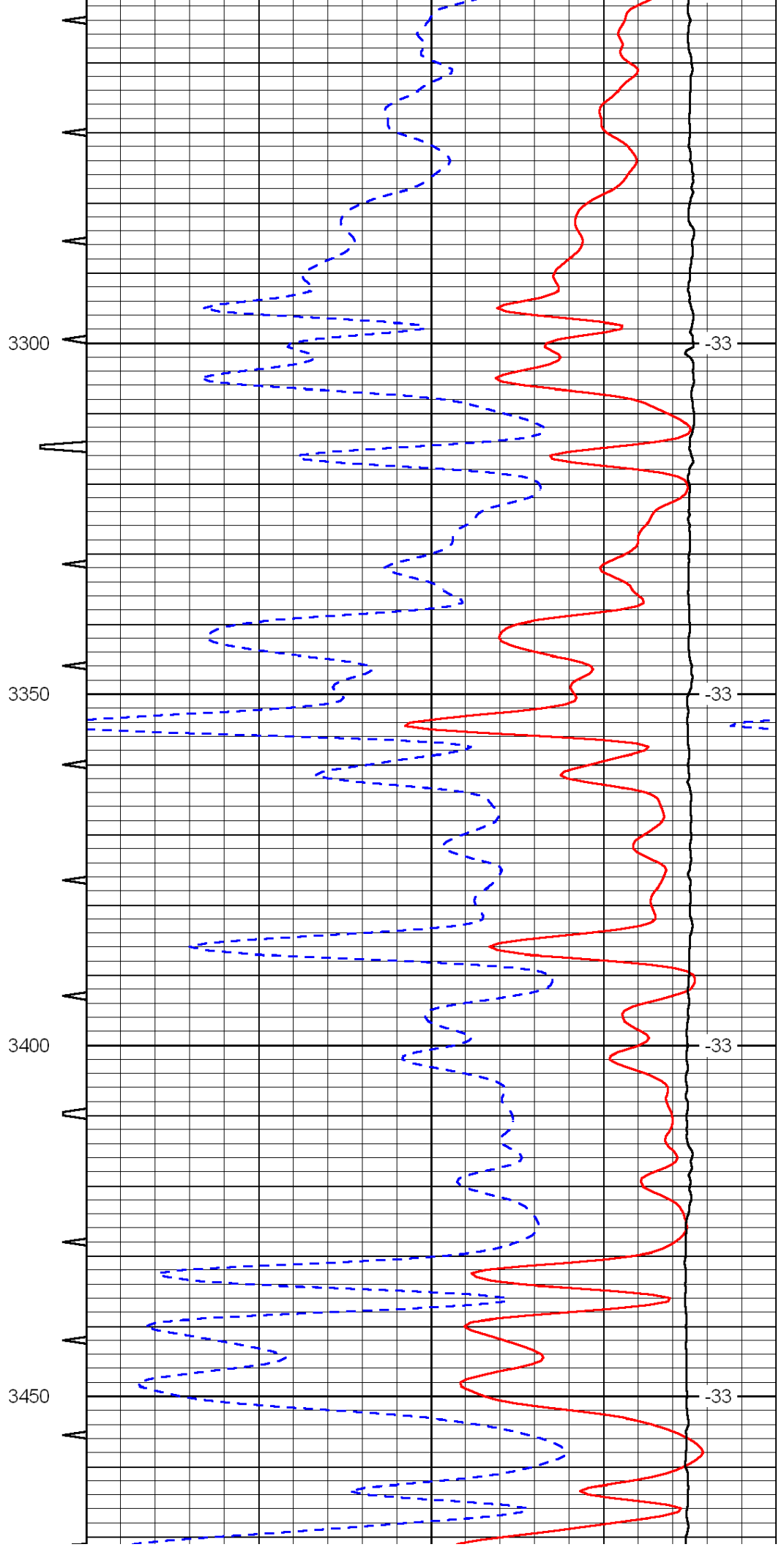
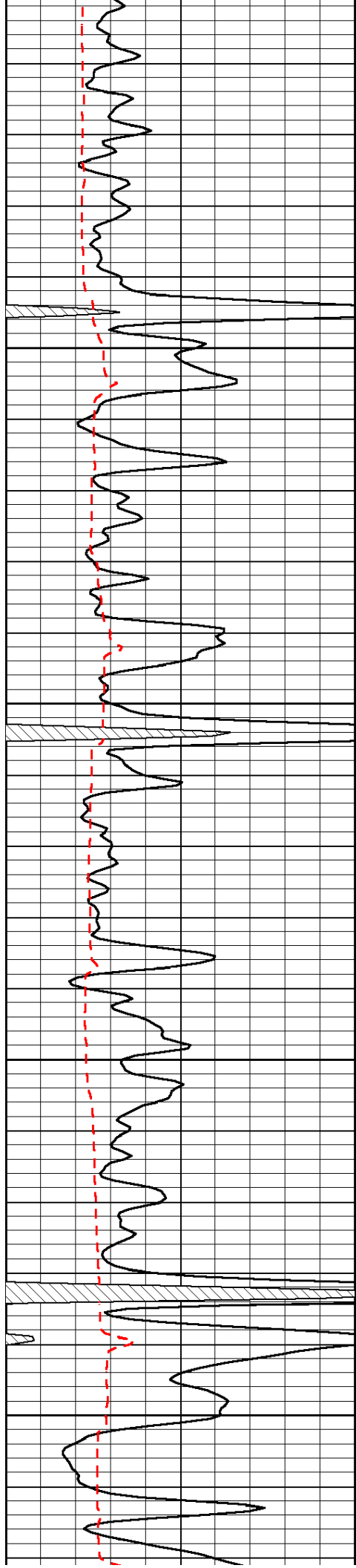




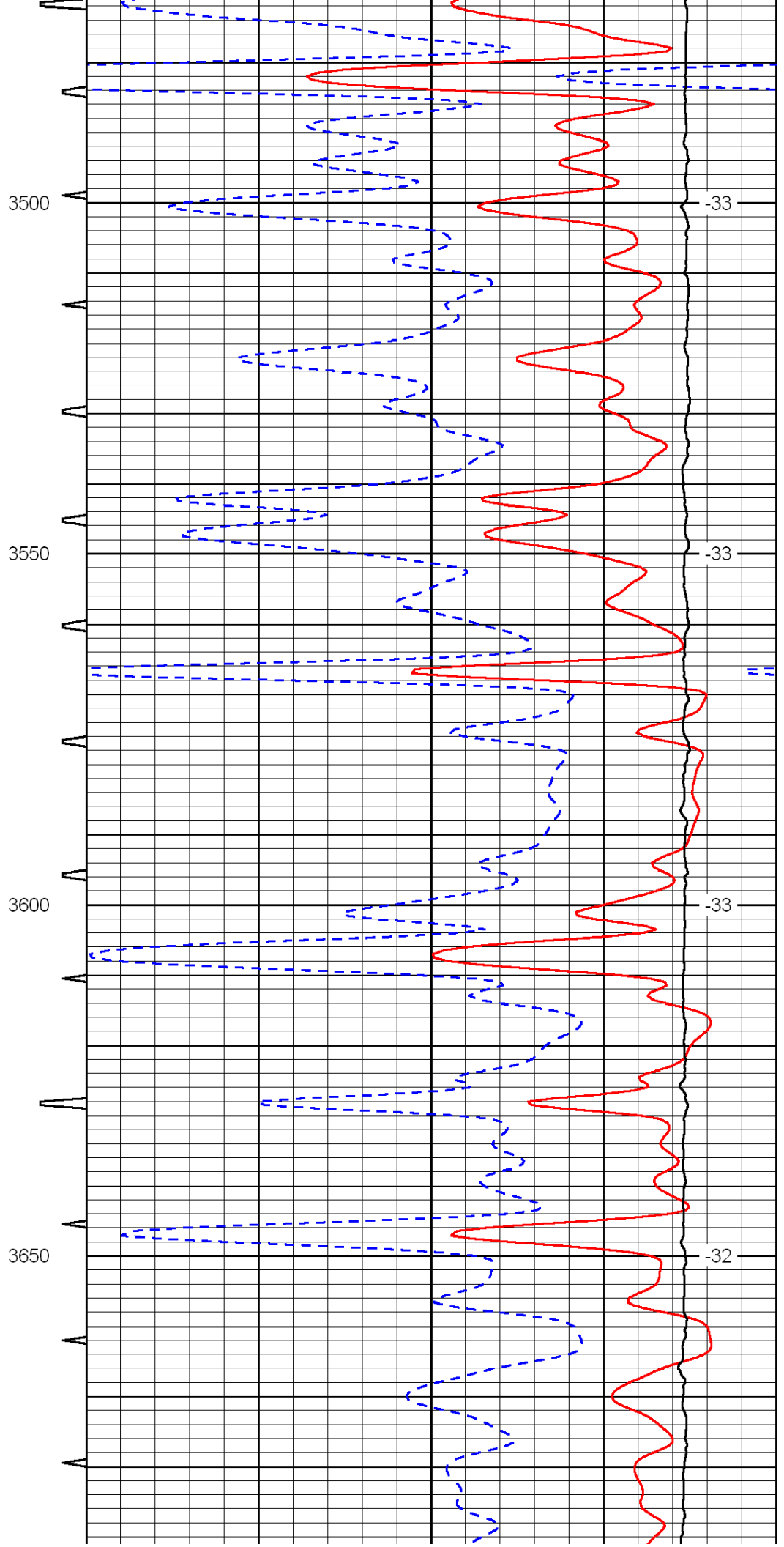
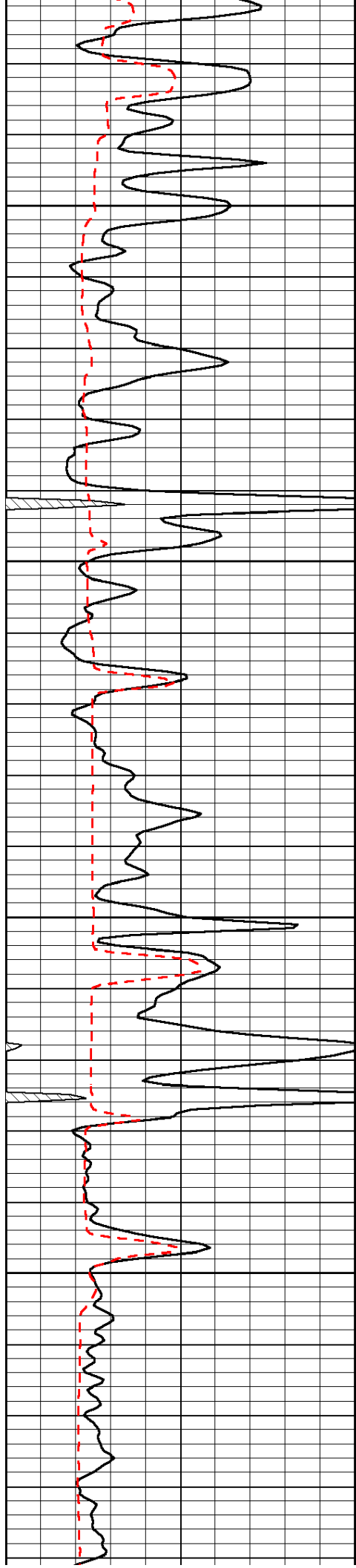


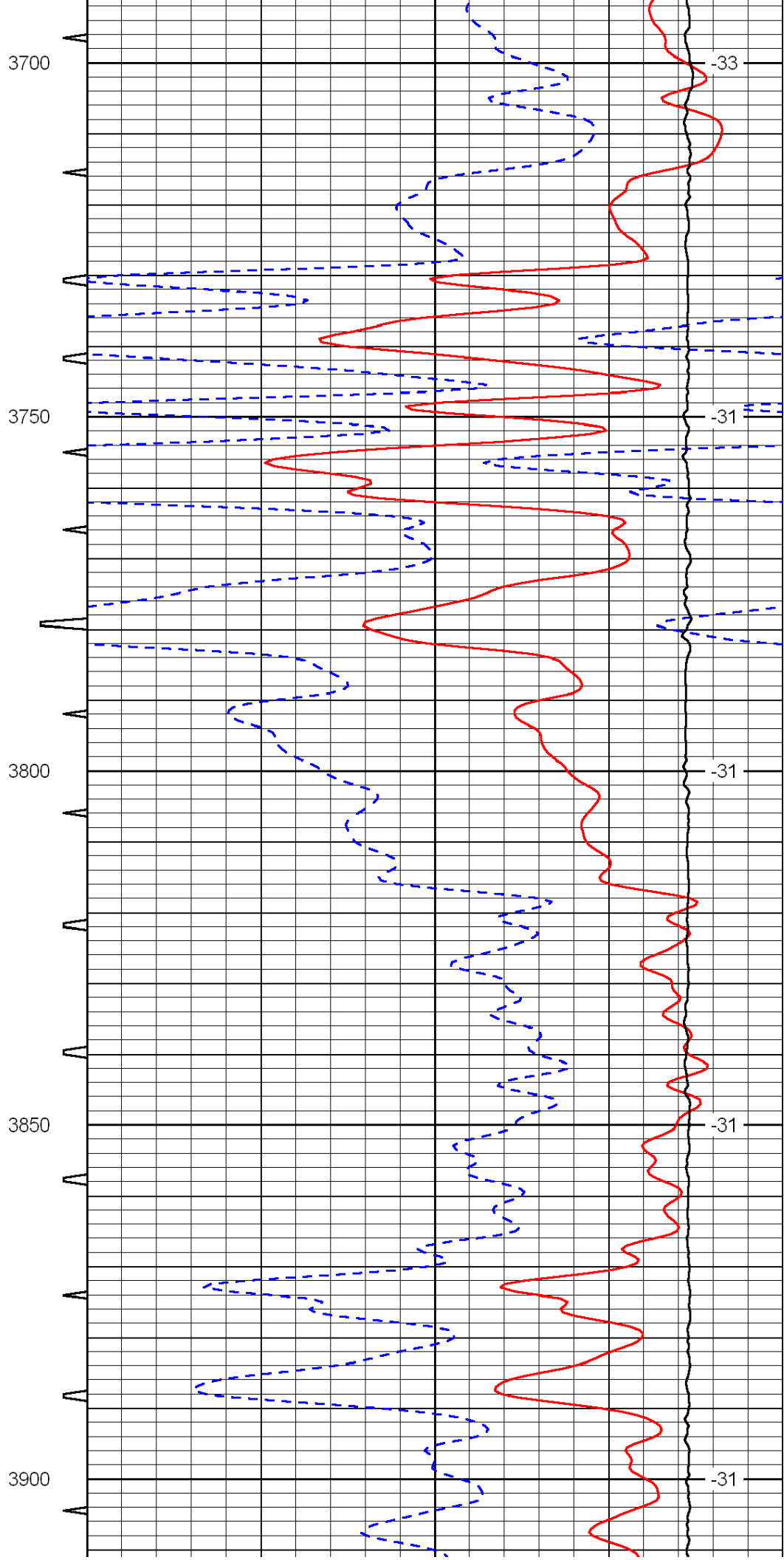
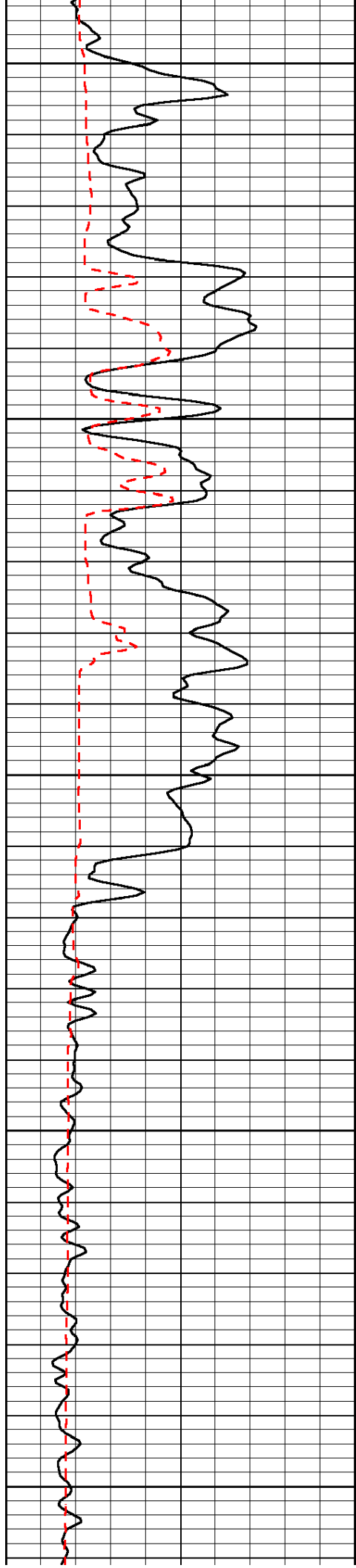


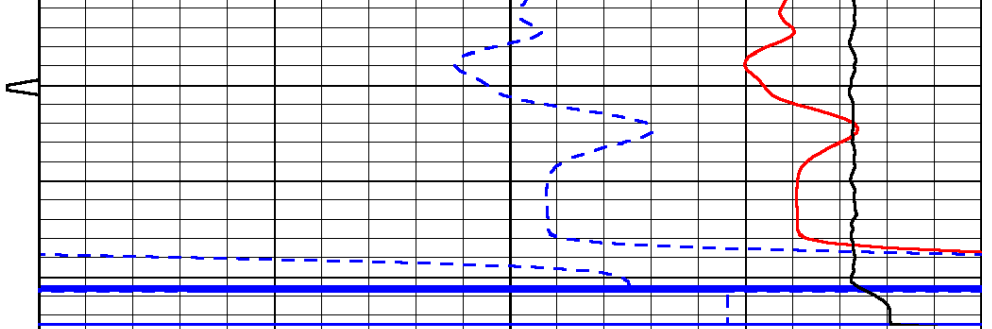
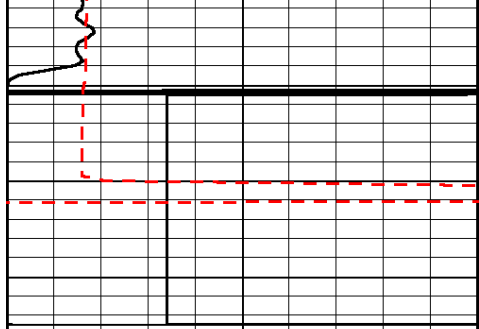












0	Gamma Ray	150	Sonic Int	140	Delta Time (usec/ft)	40
150	Gamma Ray	300	5	0	SPOR	-10
6	Caliper (GAPI)	16		15000	LTEN (lb)	0

LSPD