



Dual Compensated Porosity Log

DIGITAL LOG

(785) 625-3858

API No.

15-007-23,786-00-00

Company Indian Oil Company, Inc.
Well Stateline No. 1
Field Wildcat
County Barber
State Kansas

Location NW/NW/NE
330' FNL & 2,310' FEL
Sec: 13 Twp: 35S Rge: 12W

Other Services
DIL

Permanent Datum Ground Level Elevation 1376
Log Measured From Kelly Bushing 11 Ft. Above Perm. Datum
Drilling Measured From Kelly Bushing

Elevation
K.B. 1387
D.F. 1376
G.L. 1376

Date 11/16/2011

Run Number One

Type Log CNL / CDL

Depth Driller 5395

Depth Logger 5384

Bottom Logged Interval 5363

Top Logged Interval 3800

Type Fluid In Hole Chemical

Salinity, PPM CL 9000

Density 9.1

Level Full

Max. Rec. Temp. F 130

Operating Rig Time 3 Hours

Equipment -- Location 10 Days

Recorded By J. Long

Witnessed By Scott Alberg

Borehole Record				Casing Record			
Run No.	Bit	From	To	Size	Wgt.	From	To
1	12.25	00	227	8.625	24#	00	227
2	7.875	227	5395				

<<< Fold Here >>>

All interpretations are opinions based on inferences from electrical or other measurements and we cannot and do not guarantee the accuracy or correctness of any interpretation, and we shall not, except in the case of gross or willful negligence on our part, be liable or responsible for any loss, costs, damages, or expenses incurred or sustained by anyone resulting from any interpretation made by any of our officers, agents or employees. These interpretations are also subject to our general terms and conditions set out in our current Price Schedule.

Comments

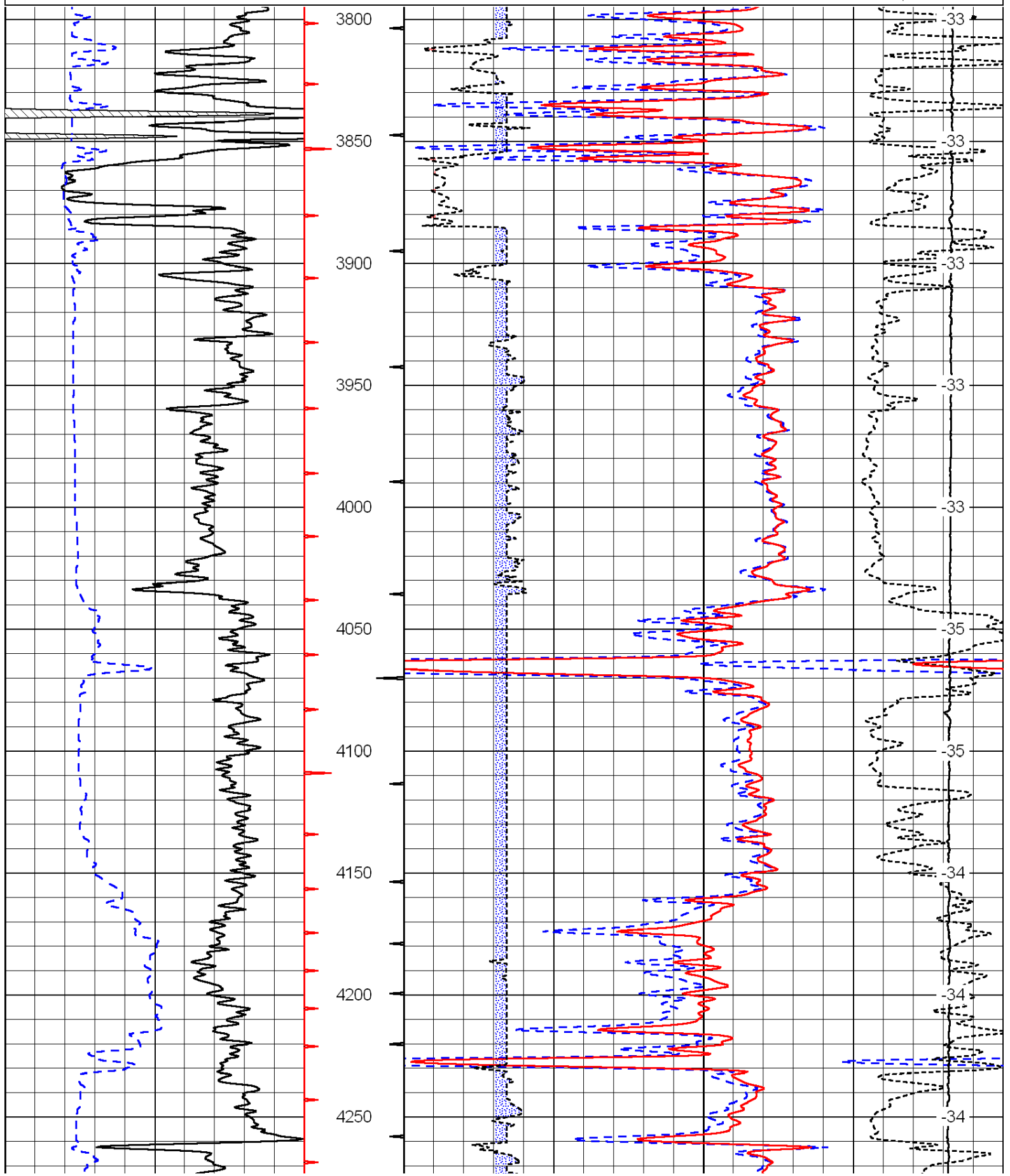
Thank you for using Log-Tech, Inc.
(785) 625-3858

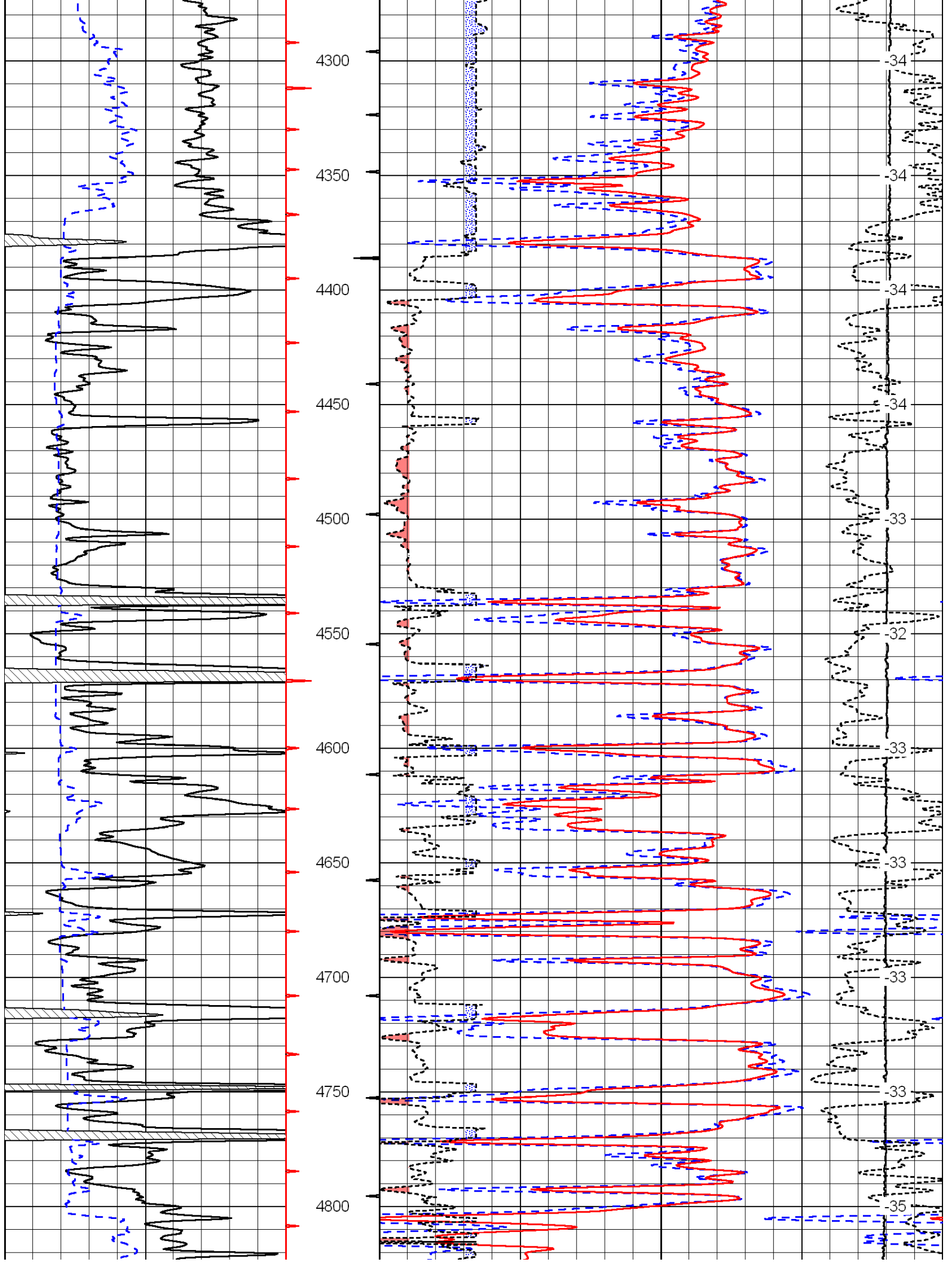
Medicine Lodge, South to Highway 281 and Highway 2 Intersection, 1/2 South to Stubbs Road, 3/4 South, West Into

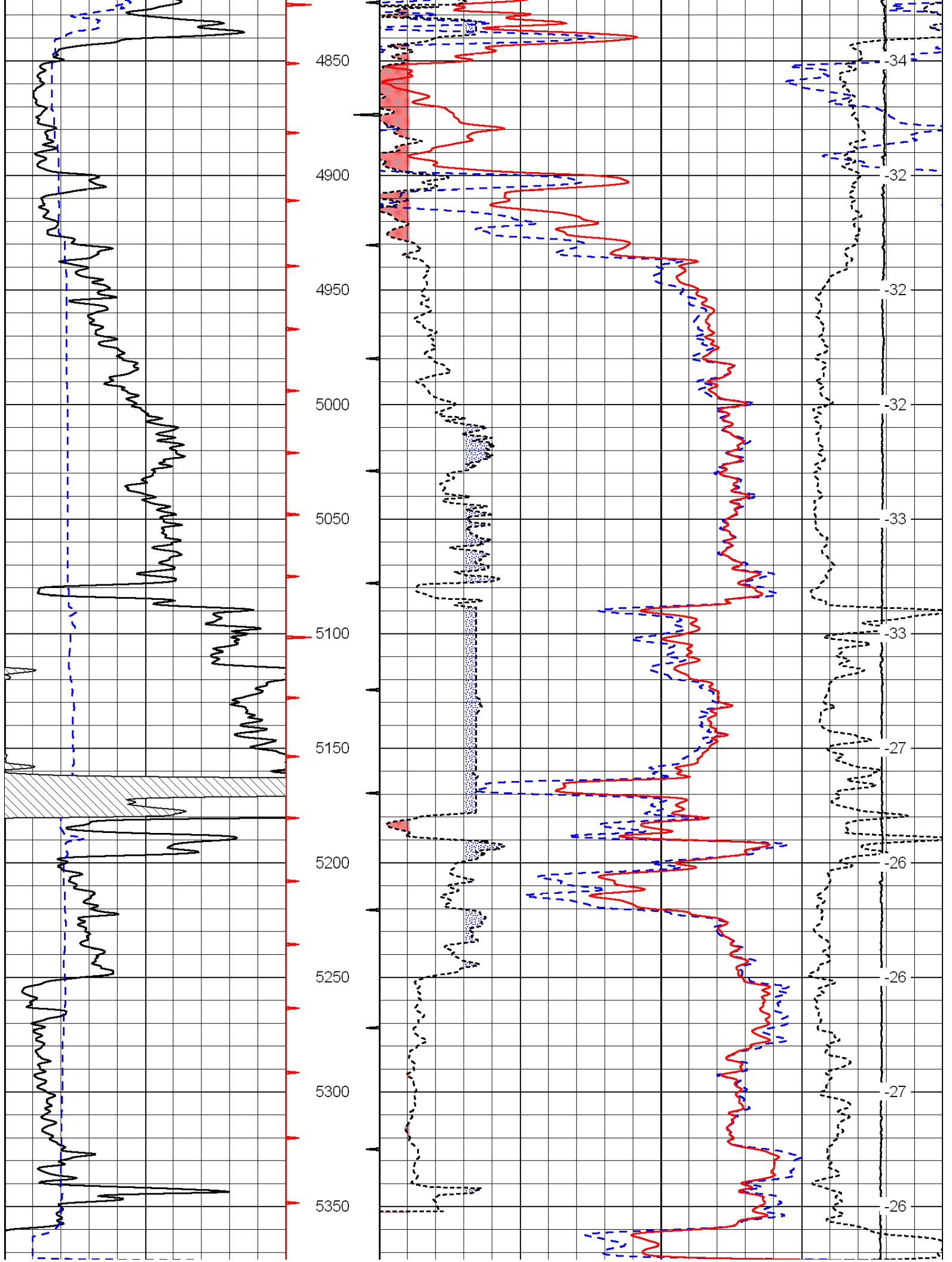
Database File: c:\warrior\data\indian oil _stateline no. 1\indianoilcompany_stateline_1hd.db
Dataset Pathname: dil/indstck
Presentation Format: cdl
Dataset Creation: Wed Nov 16 04:35:05 2011
Charted by: Depth in Feet scaled 1:600

0	Gamma Ray	150
6	Caliper (GAPI)	16

30	Compensated Density		-10
2	Bulk Density		3
15000	Line Tension		0
2.625	DGA	3.425	-0.25
			Correction
			0.25
LSPD			







0	Gamma Ray	150	30	Compensated Density		-10
6	Caliper (GAPI)	16	2	Bulk Density		3
			15000	Line Tension		0
			2.625	DGA	3.425 -0.25	Correction 0.25
						LSPD

Database File: c:\warrior\data\indian oil _stateline no. 1\indianoilcompany_stateline_1hd.db
 Dataset Pathname: dil/indstck
 Presentation Format: cndlspec
 Dataset Creation: Wed Nov 16 04:35:05 2011
 Charted by: Depth in Feet scaled 1:240

0	Gamma Ray	150	30	Compensated Neutron (Limestone)		-10
6	Caliper (GAPI)	16	30	Compensated Density (Limestone)		-10
			2.625	DGA	3.425 -0.25	Correction 0.25
			15000	Line Tension		0
						LSPD

