

Company	Castle Resources Inc.	Company	Castle Resources Inc.
Well	Mollyhagen #8	Well	Mollyhagen #8
Field	Edwards	Field	Edwards
County	Ellsworth	County	Ellsworth
State	Kansas	State	Kansas
Location:	4890 FNL & 3860 FVL	Location:	API #: 15 053 00771
SEC 9	TWP 17S	RGE 8W	Elevation
Permanent Datum	Ground Level	Elevation	1673
Log Measured From	KB 5 AGL	K.B.	1678
Drilling Measured From	KB	D.F.	1673
Date	10-14-11	G.L.	1673
Run Number	One		
Depth Driller	3305		
Bottom Logger	3307		
Bottom Logged Interval	3103		
Top Log Interval	3103		
Open Hole Size	7/8		
Open Hole	Water		
Downhole	Downhole		
Max. Recorded Temp.	////		
Estimated Cement Top	////		
Time Well Ready	3:30 p.m.		
Time Logger on Bottom	3:30 p.m.		
Equipment Number	T045		
Location	Hays, KS		
Recorded By	L. Smith		
Witnessed By	Mr. Jerry Green		
Run Number	1	Run Number	1
Bit	From	Bit	To
Borehole Record	From	Tubing Record	To
Size	5.5"	Weight	0
Wair	0	From	3174
Production String		Bottom	

<<< Fold Here >>>

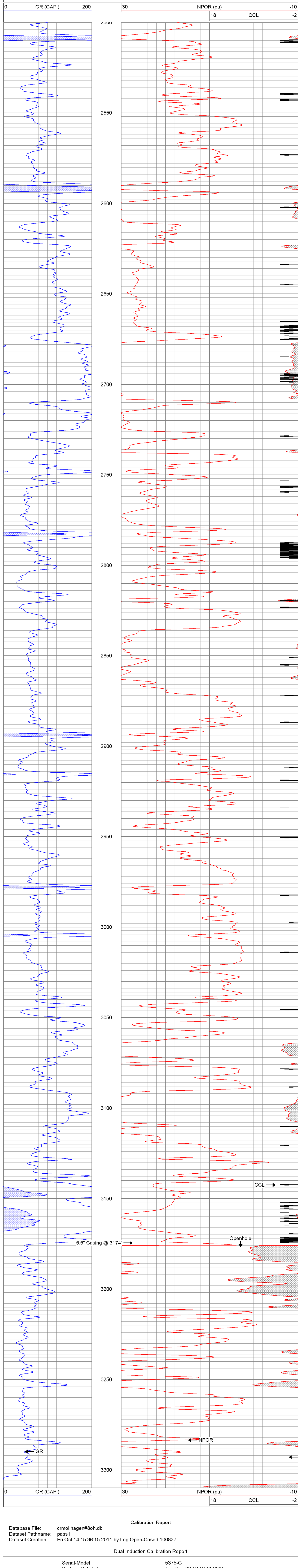
All interpretations are opinions based on inferences from electrical or other measurements and we cannot and do not guarantee the accuracy or correctness of any interpretation, and we shall not, except in the case of gross or willful negligence on our part, be liable or responsible for any loss, costs, damages, or expenses incurred or sustained by anyone resulting from any interpretation made by any of our officers, agents or employees. These interpretations are also subject to our general terms and conditions set out in our current Price Schedule.

Comments

Thanks for using The Perforators Hays, KS. (785-621-4604)

Main Pass

Database File: crmollhagen#8oh.db
 Dataset Pathname: pass2.1
 Presentation Format: gr-n-ccl
 Dataset Creation: Sat Oct 15 10:07:47 2011 by Calc Open-Cased 100827
 Charted by: Depth in Feet scaled 1:240



Database File: crmollhagen#8oh.db
 Dataset Pathname: pass1
 Dataset Creation: Fri Oct 14 15:36:15 2011 by Log Open-Cased 100827

Dual Induction Calibration Report

Serial-Model: 5375-G
 Surface Cal Performed: Thu Sep 22 16:18:11 2011
 Downhole Cal Performed: Thu Sep 22 16:18:40 2011

Surface Calibration		Readings		References		Results			
Loop:	Air	Loop		Air	Loop	m	b		
Deep	0.001	0.639	V	0.000	350.000	mmho/m	548.978	-0.754	
Medium	0.004	0.741	V	0.000	400.000	mmho/m	542.647	-2.120	
Internal:		Zero		Cal		m		b	
Deep	0.001	0.639	V	0.000	350.000	mmho/m	548.752	-0.509	
Medium	0.003	0.740	V	0.000	550.000	mmho/m	746.733	-2.571	

Gamma Ray Calibration Report

Serial Number: 2000
 Tool Model: P2000
 Performed: Mon Sep 26 11:41:30 2011

Calibrator Value:	1.0	GAPI
Background Reading:	0.0	cps
Calibrator Reading:	1.0	cps
Sensitivity:	0.2200	GAPI/cps

Sensor	Offset (ft)	Schematic	Description	Len (ft)	OD (in)	Wt (lb)
CCL	10.00		CCL-T (Slimhole) 1 11/16" Titan Slimhole CCL trinidad	1.83	1.69	10.00
GR	6.44		GR-TS (13D) Titan 1 11/16" Slimhole GR trinidad	4.28	1.69	28.00
NEU	1.41		NEU-T (Titan) Titan	5.01	1.69	21.00

Dataset: crmollhagen#8oh.db; field/well/run1/pass2.1
 Total Length: 11.13 ft
 Total Weight: 59.00 lb
 O.D.: 1.69 in