



Microresistivity Log

DIGITAL LOG (785) 625-3858

15-051-26202-00-00

API No.

Company TDI, Inc.

Well Irvin Trust #1

Field Wildcat

County Eliis State Kansas

Location

N/2 NW SE SW
1005' FSL / 1650' FWL

Sec: 13 Twp: 15S Rge: 19W

Permanent Datum Ground Level Elevation 2005
Log Measured From Kelly Bushing 10 Ft. Above Perm. Datum
Drilling Measured From Kelly Bushing

Other Services
CNL / CDL
DIL
Elevation
K.B. 2015
D.F.
G.L. 2005

Date 11/8/2011

Run Number Two

Depth Driller 3750

Depth Logger 3749

Bottom Logged Interval 3748

Top Log Interval 2900

Casing Driller 8.625 @ 1201

Casing Logger 1200

Bit Size 7.875

Type Fluid in Hole Chemical

Salinity, ppm CL 3000

Density / Viscosity 9.1 53

pH / Fluid Loss 11.0 6.8

Source of Sample Flowline

Rm @ Meas. Temp 1.20 @ 60

Rmf @ Meas. Temp 0.90 @ 60

Rmc @ Meas. Temp 1.62 @ 60

Source of Rmf / Rmc Charts

Rm @ BHT 0.63 @ 114

Operating Rig Time 3 Hours

Max Rec. Temp. F 114

Equipment Number 15

Location Hays

Recorded By R. Barnhart

Witnessed By Herb Deines

<<< Fold Here >>>

All interpretations are opinions based on inferences from electrical or other measurements and we cannot and do not guarantee the accuracy or correctness of any interpretation, and we shall not, except in the case of gross or willful negligence on our part, be liable or responsible for any loss, costs, damages, or expenses incurred or sustained by anyone resulting from any interpretation made by any of our officers, agents or employees. These interpretations are also subject to our general terms and conditions set out in our current Price Schedule.

Comments

Thank you for using Log-Tech, Inc.
(785) 625-3858

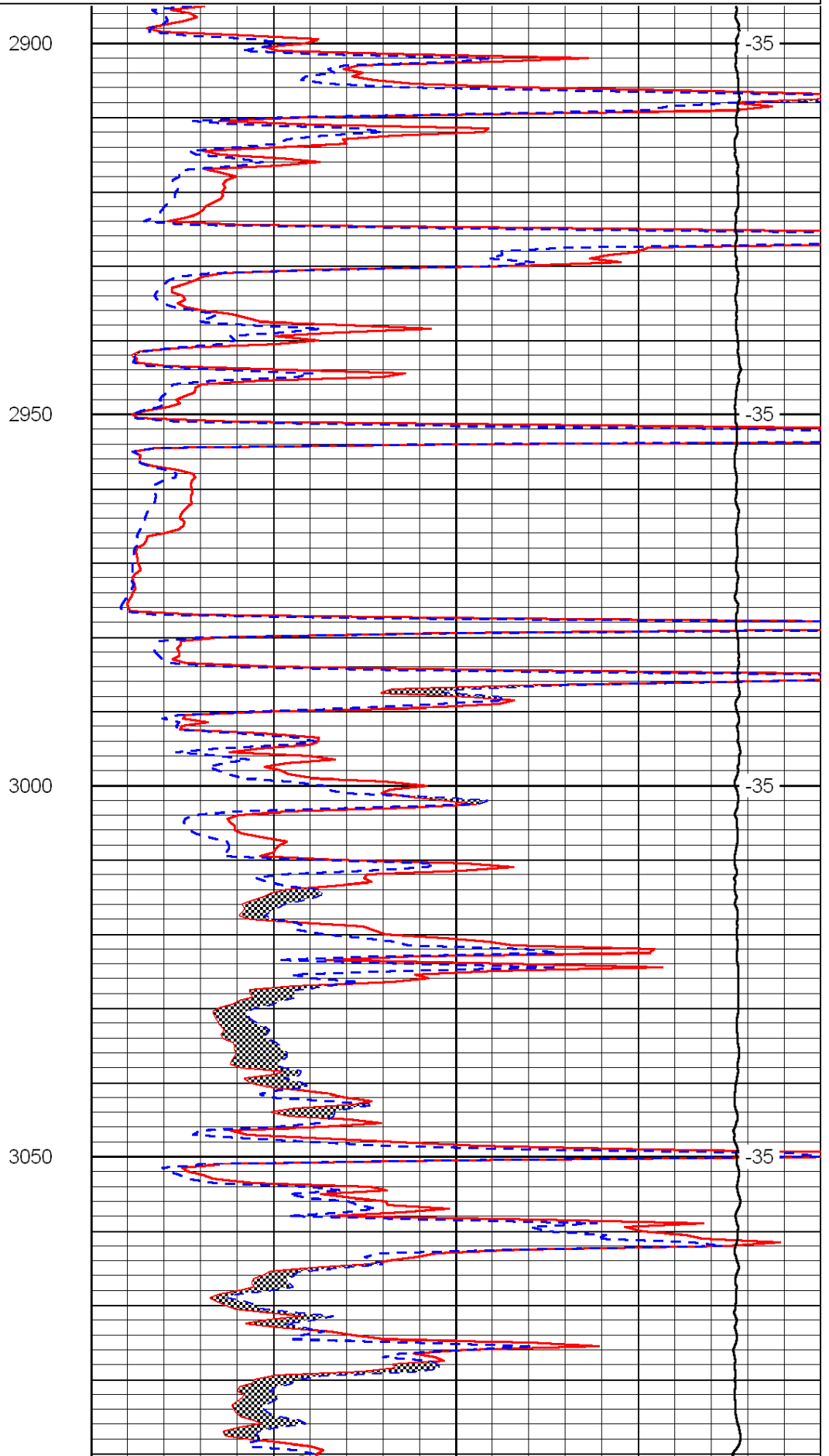
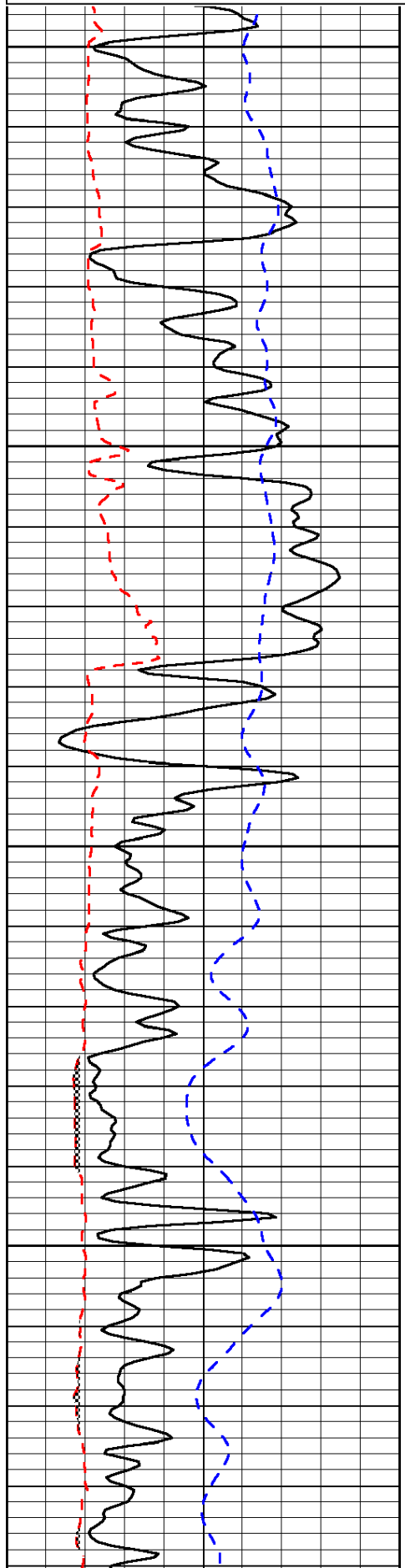
Antonino, KS:
3S, 1/4E, N into

Database File: c:\warrior\data\tdi_irvin trust #1\tdihd.db
Dataset Pathname: dil\tdimain
Presentation Format: micro
Dataset Creation: Tue Nov 08 23:36:05 2011
Charted by: Depth in Feet scaled 1:240

0	Gamma Ray	150
6	Micro Log Caliper (GAPI)	16
-200	SP (mV)	0

0	Micro Inverse 1 X 1	40
0	Micro Normal 2"	40
15000	Line Weight	0

LSPD



2900

2950

3000

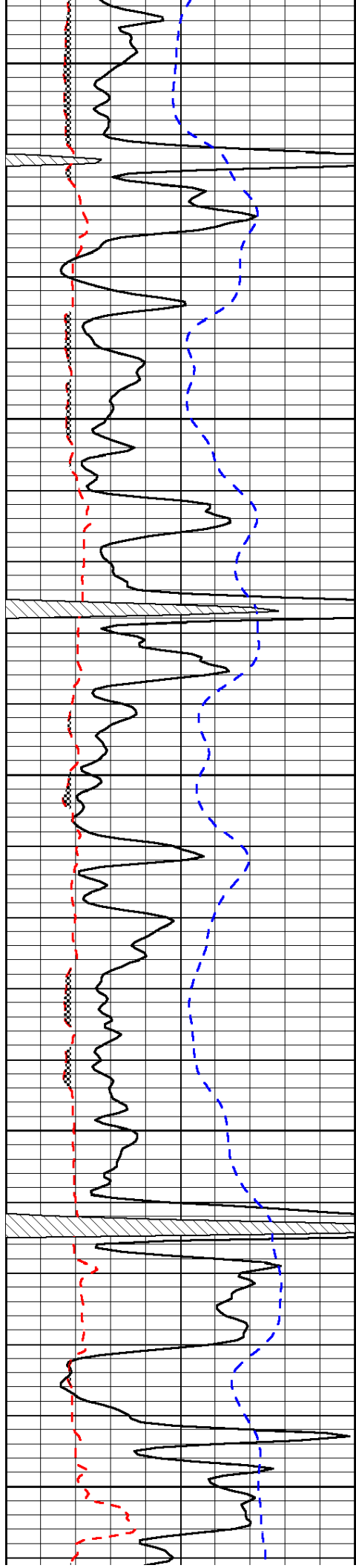
3050

-35

-35

-35

-35



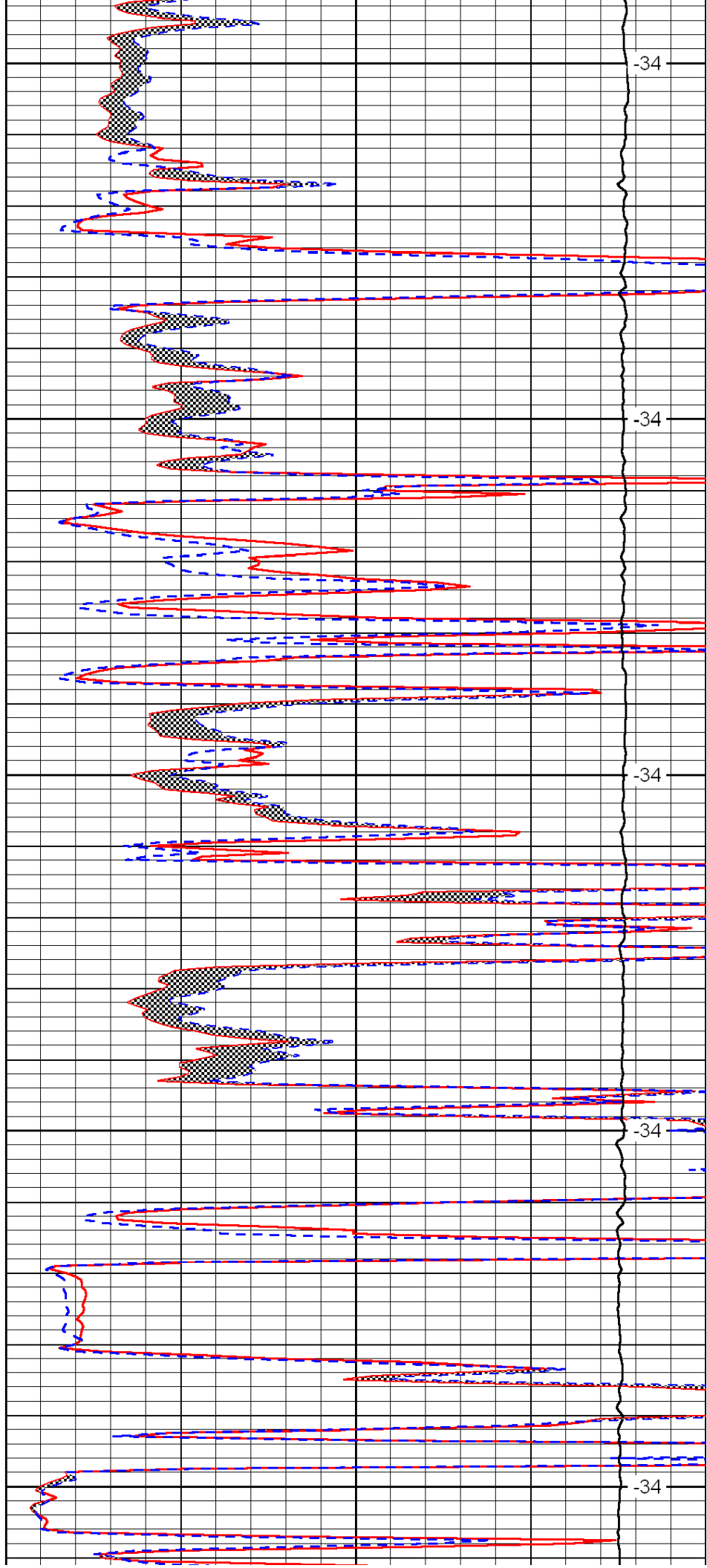
3100

3150

3200

3250

3300



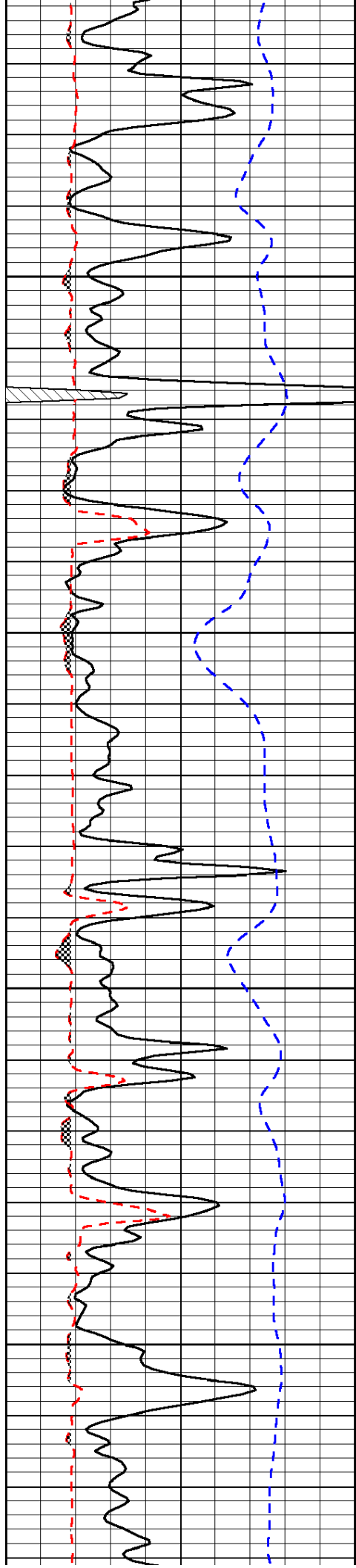
-34

-34

-34

-34

-34

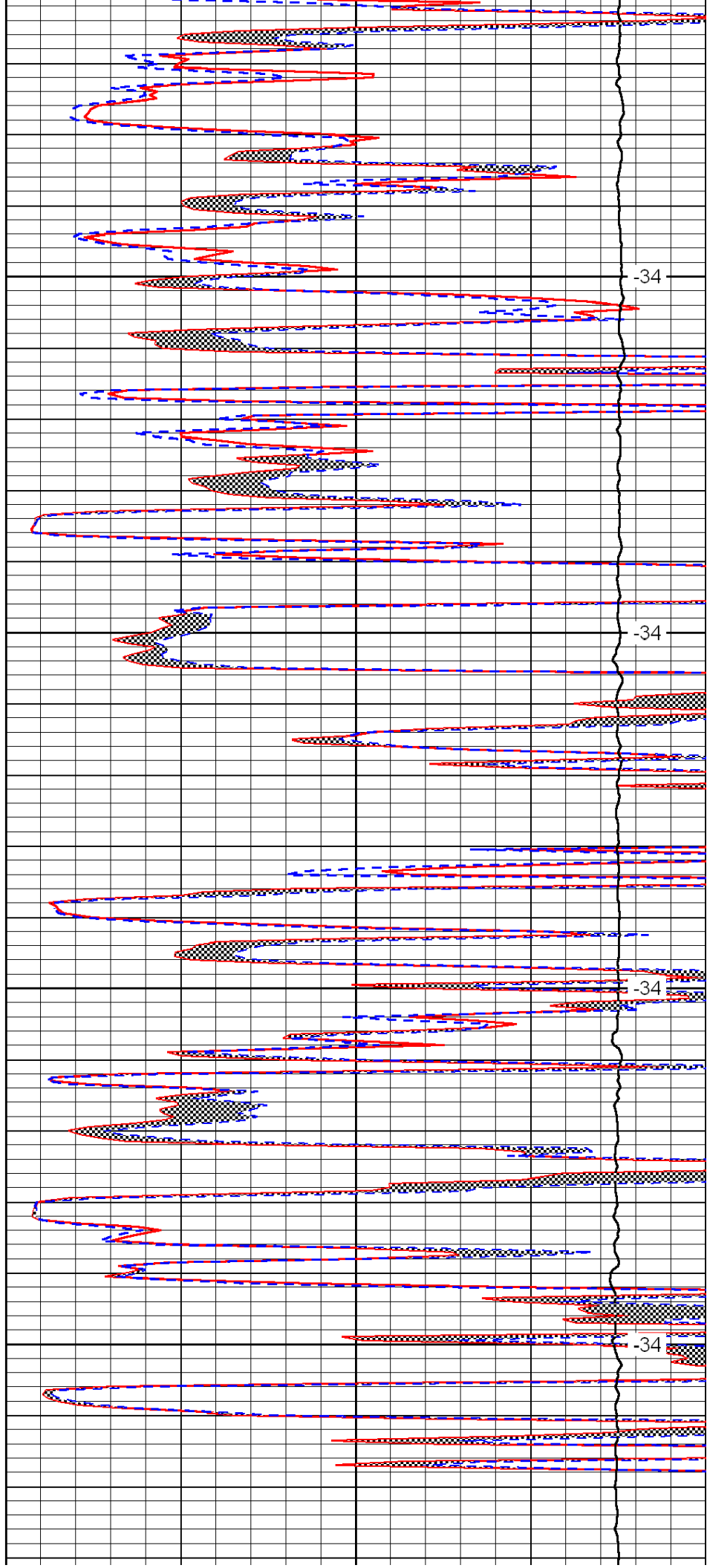


3350

3400

3450

3500

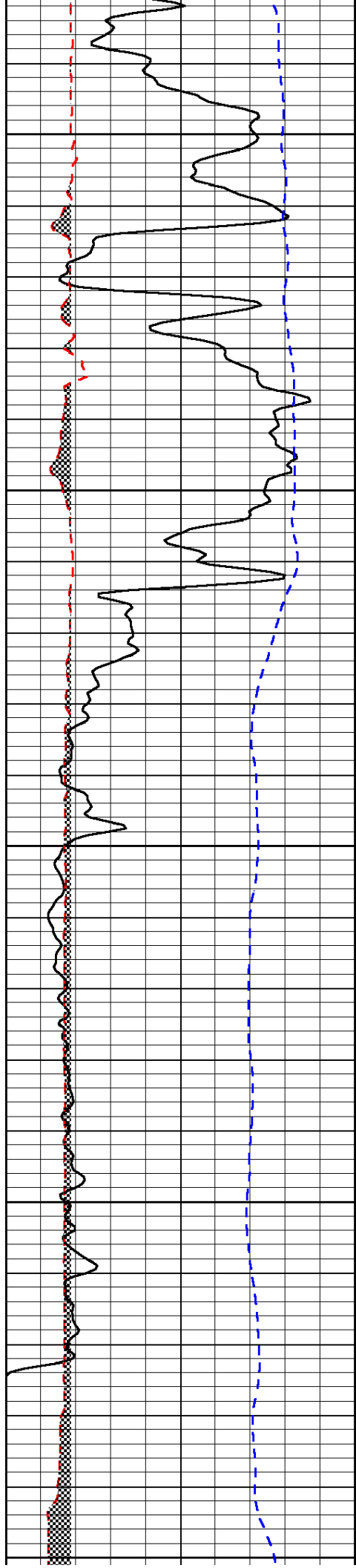


-34

-34

-34

-34



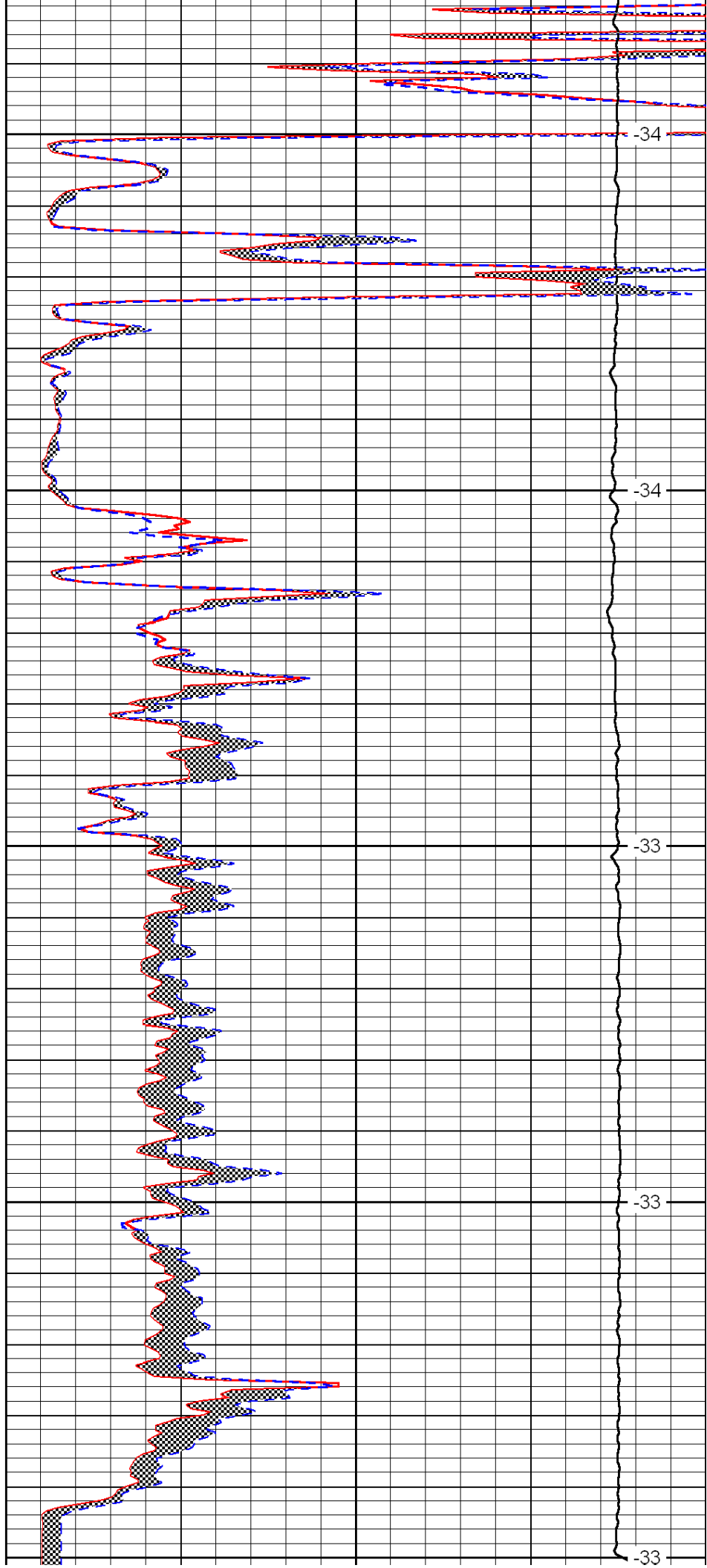
3550

3600

3650

3700

3750



-34

-34

-33

-33

-33

0	Gamma Ray	150
6	Micro Log Caliper (GAPI)	16
-200	SP (mV)	0

0	Micro Inverse 1 X 1	40
0	Micro Normal 2"	40
15000	Line Weight	0

LSPD