



# Dual Induction Log

**DIGITAL LOG** (785) 625-3858

15-051-26202-00-00

API No.	Company	TDI, Inc.
	Well	Irvin Trust #1
	Field	Wildcat
	County	Ellys
	State	Kansas
Location	N/2 NW SE SW 1005' FSL / 1650' FWL	
Sec: 13	Twp: 15S	Rge: 19W
Other Services	CNL / CDL MEL	

Permanent Datum	Ground Level	Elevation 2005
Log Measured From	Kelly Bushing	10 Ft. Above Perm. Datum
Drilling Measured From	Kelly Bushing	

Date	11/8/2011
Run Number	One
Depth Driller	3750
Depth Logger	3749
Bottom Logged Interval	3748
Top Log Interval	1150
Casing Driller	8.625 @ 1201
Casing Logger	1200
Bit Size	7.875
Type Fluid in Hole	Chemical
Salinity, ppm CL	3000
Density / Viscosity	9.1   53
pH / Fluid Loss	11.0   6.8
Source of Sample	Flowline
Rm @ Meas. Temp	1.20 @ 60
Rmf @ Meas. Temp	0.90 @ 60
Rmc @ Meas. Temp	1.62 @ 60
Source of Rmf / Rmc	Charts
Rm @ BHT	0.63 @ 114
Operating Rig Time	3 Hours
Max Rec. Temp. F	114
Equipment Number	15
Location	Hays
Recorded By	R. Barnhart
Witnessed By	Herb Deines

Elevation  
K.B. 2015  
D.F.  
G.L. 2005

<<< Fold Here >>>

All interpretations are opinions based on inferences from electrical or other measurements and we cannot and do not guarantee the accuracy or correctness of any interpretation, and we shall not, except in the case of gross or willful negligence on our part, be liable or responsible for any loss, costs, damages, or expenses incurred or sustained by anyone resulting from any interpretation made by any of our officers, agents or employees. These interpretations are also subject to our general terms and conditions set out in our current Price Schedule.

**Comments**

Thank you for using Log-Tech, Inc.  
(785) 625-3858

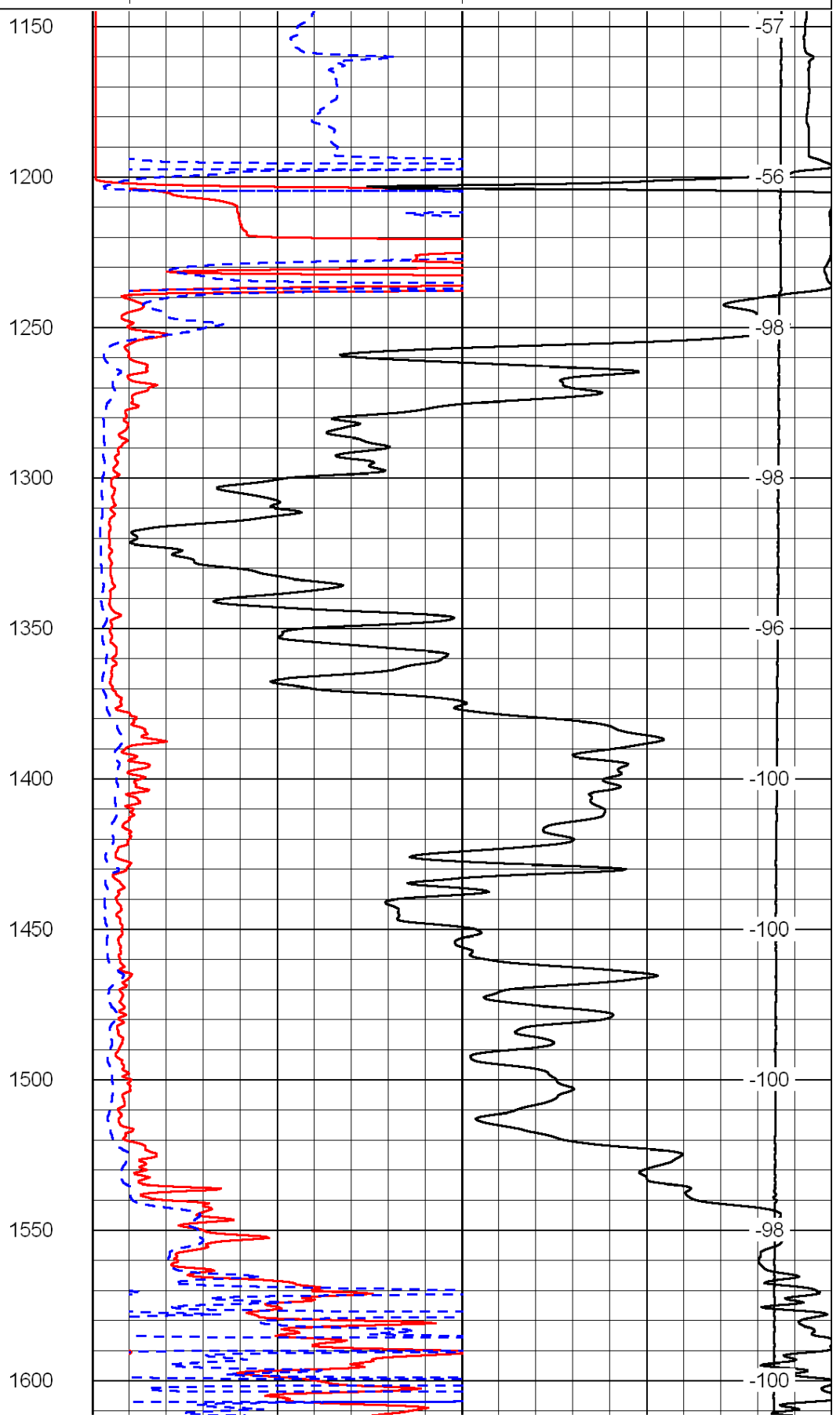
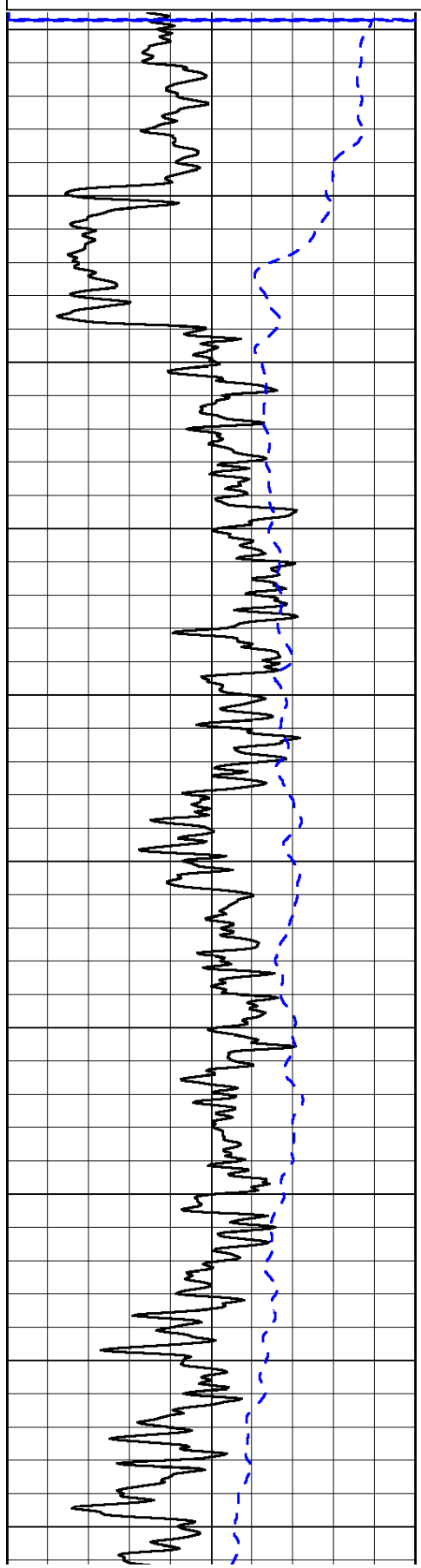
Antonino, KS:  
3S, 1/4E, N into

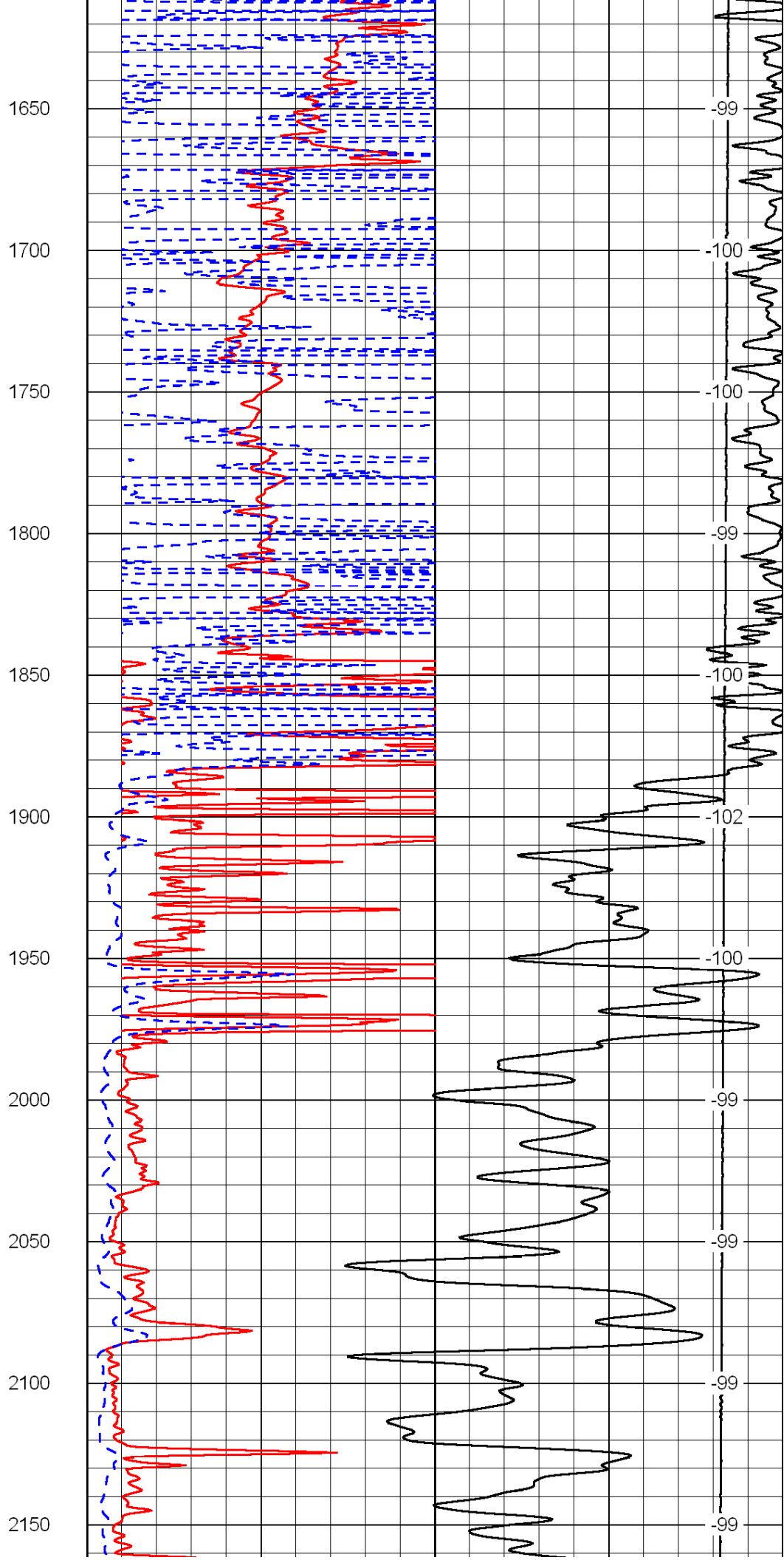
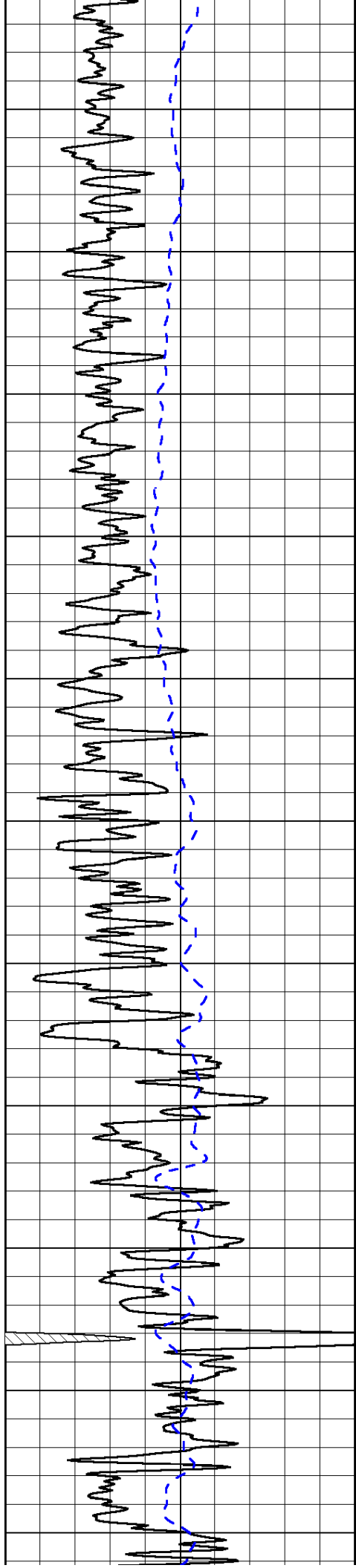
Database File: c:\warrior\data\tdi\_irvin trust #1\tdihd.db  
 Dataset Pathname: dil\tdimain  
 Presentation Format: dil2in  
 Dataset Creation: Tue Nov 08 23:36:05 2011  
 Charted by: Depth in Feet scaled 1:600

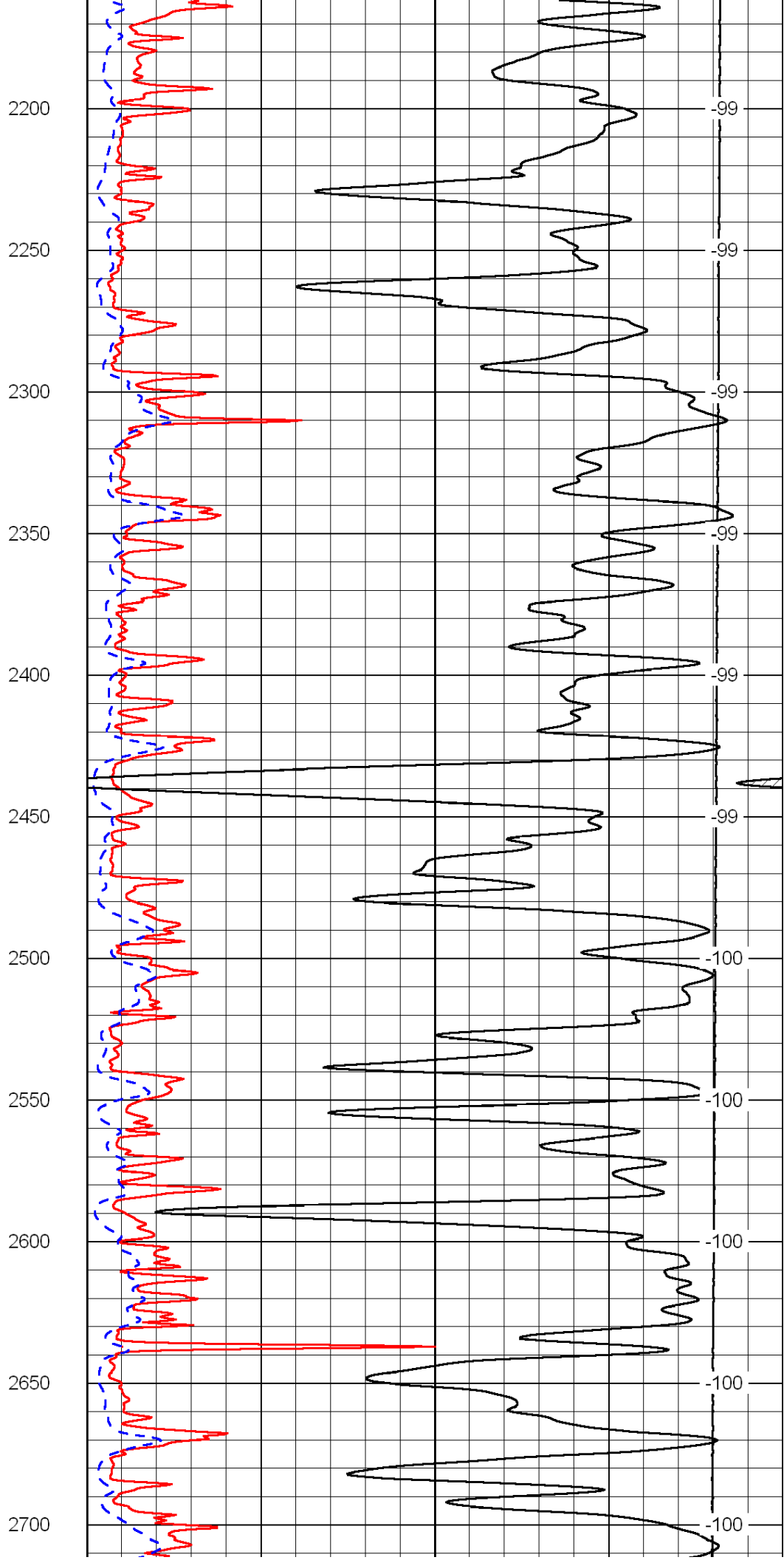
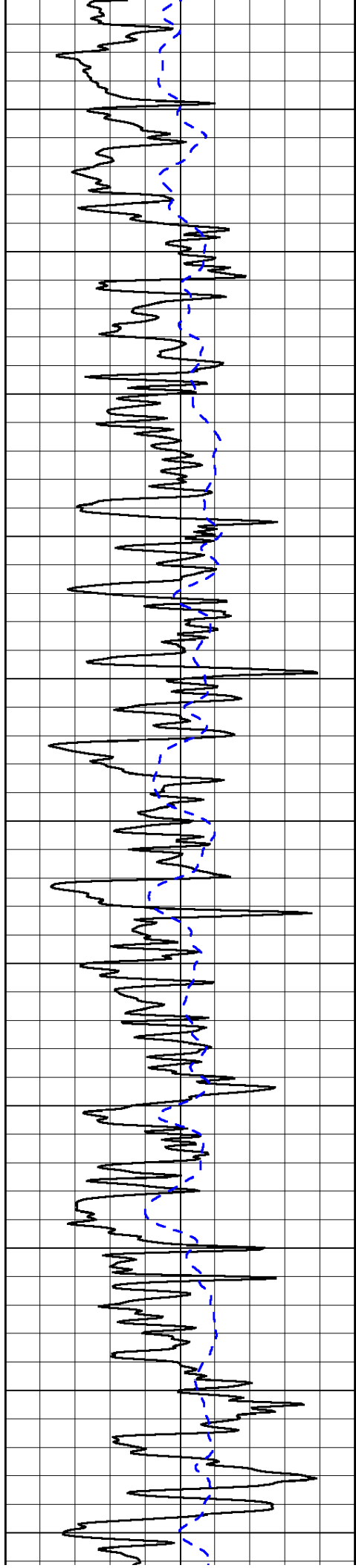
0	Gamma Ray	150
-200	SP (mV)	0

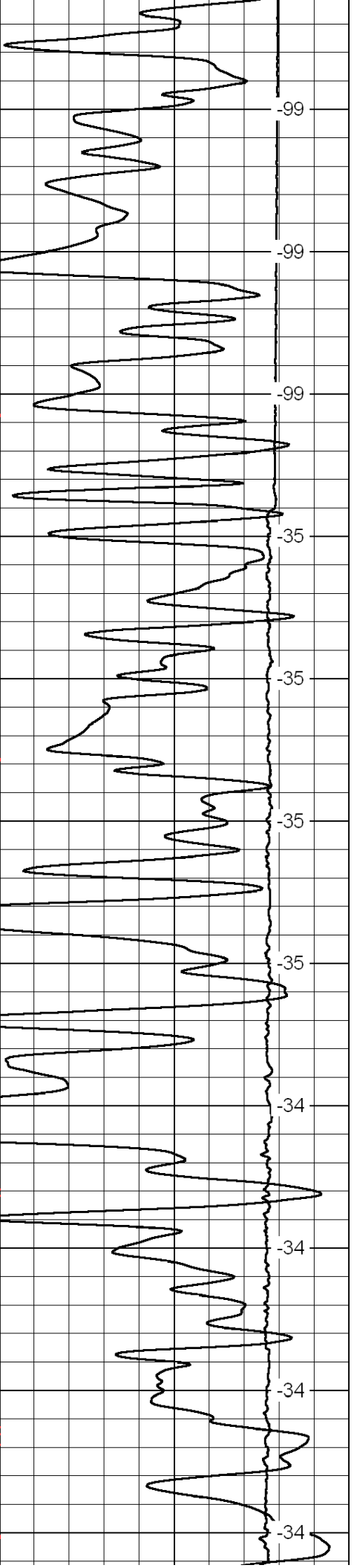
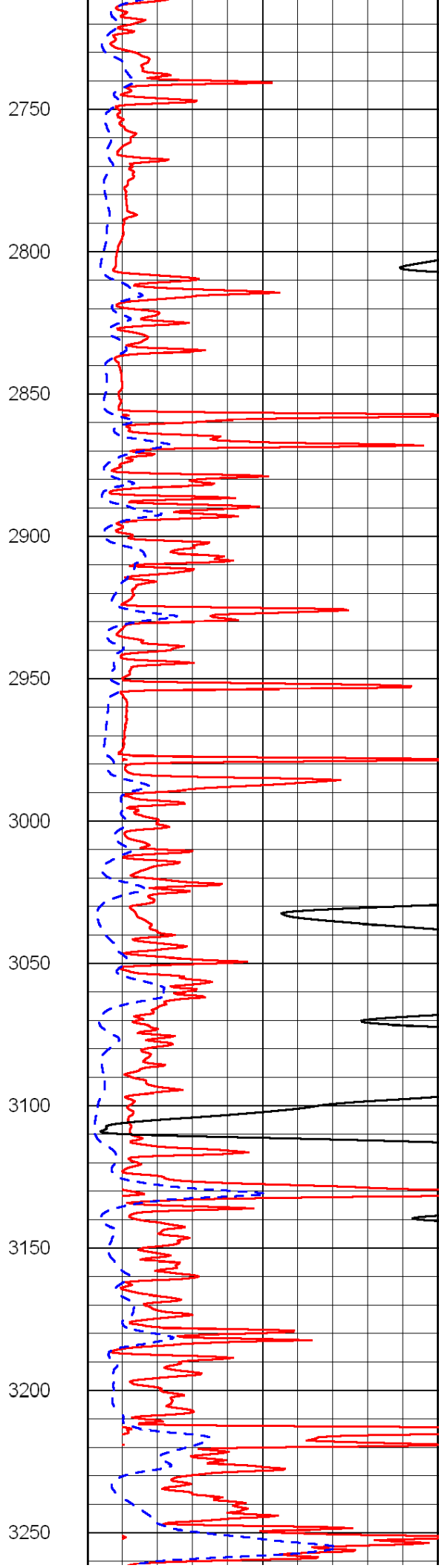
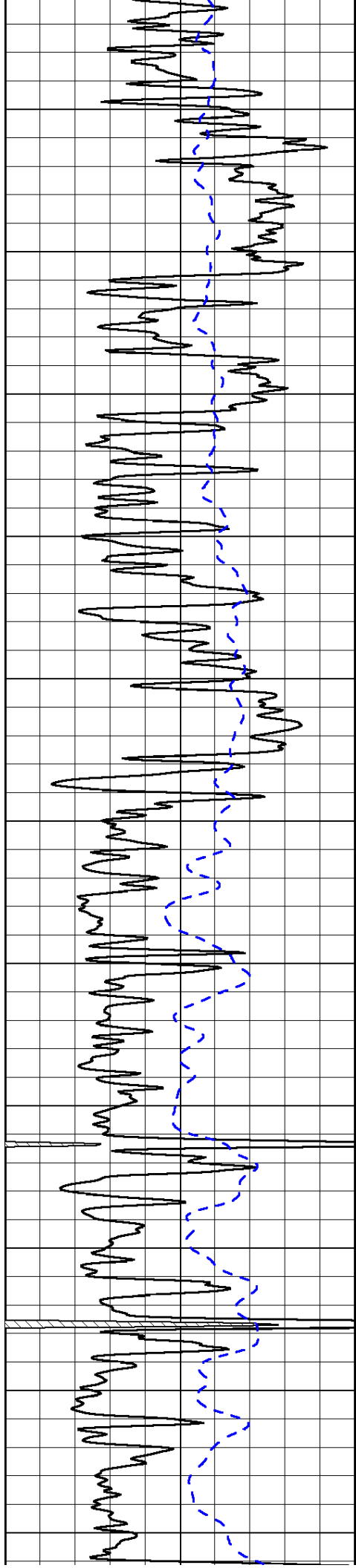
0	Shallow Resistivity	50
0	Deep Resistivity	50
1000	Conductivity	0
15000	Line Tension	0
50	Shallow Resistivity	500
50	Deep Resistivity	500

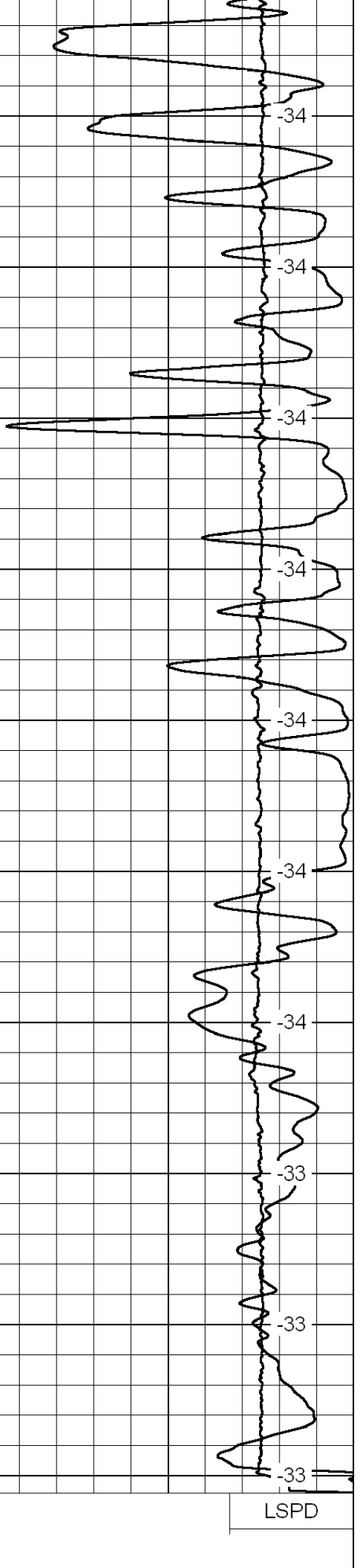
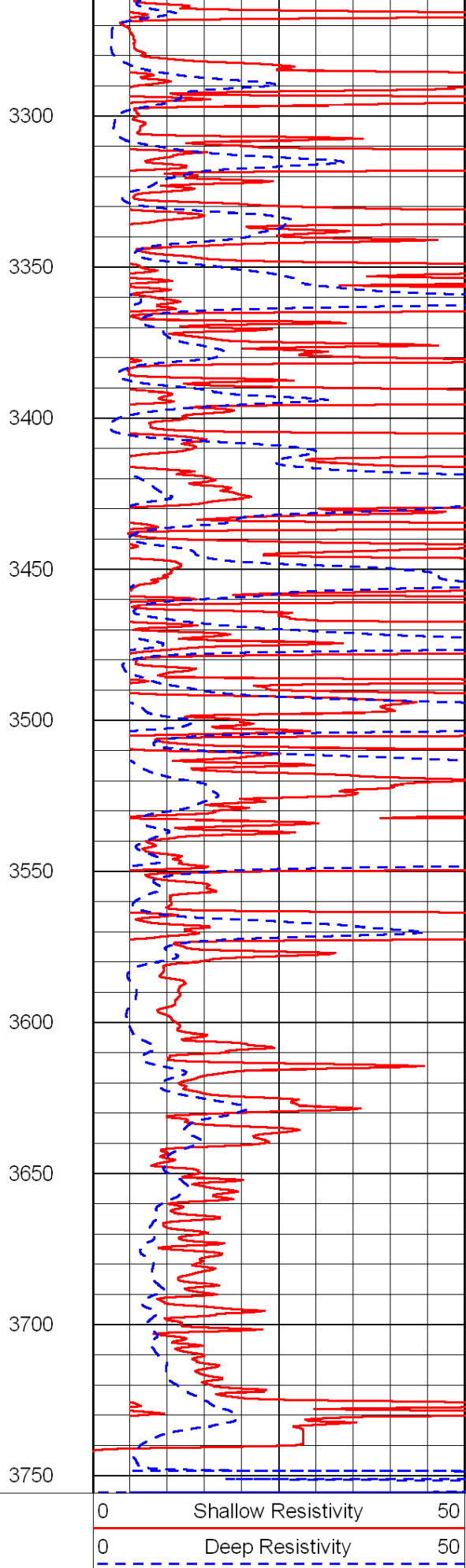
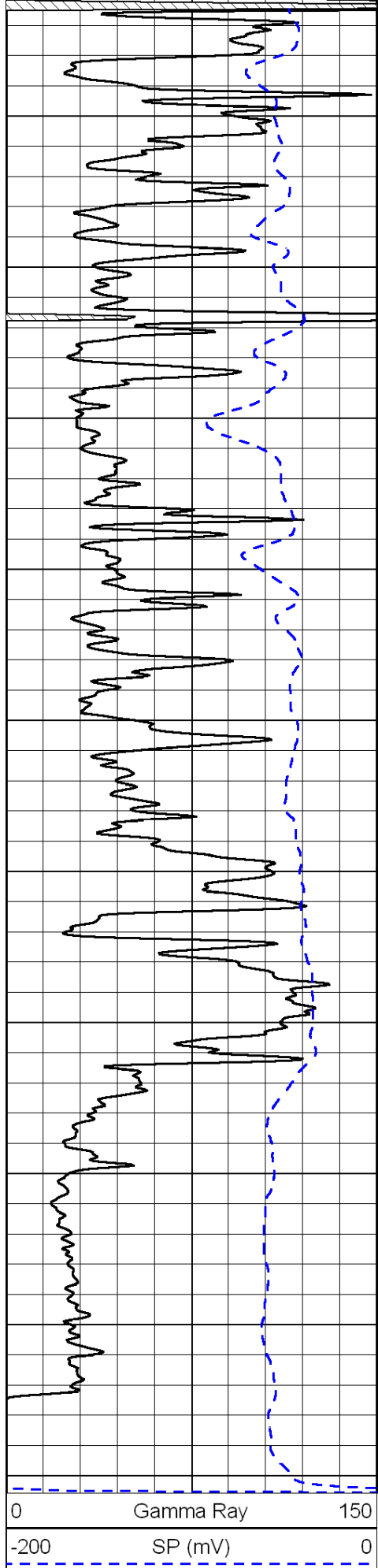
LSPD











0 Gamma Ray 150  
-200 SP (mV) 0

0 Shallow Resistivity 50  
0 Deep Resistivity 50

LSPD

1000 Conductivity 0  
15000 Line Tension 0

50 Shallow Resistivity 500