



MIDWEST SURVEYS
 LOGGING - PERFORATING - CONSULTING SERVICES
 P.O. Box 688, Osawatomie, KS 66064
 913.735.2128

GAMMA RAY / NEUTRON / CCL

File No.

Company Phayn Resources, LLC.

Well Longanecker No. 1-16

Field Longanecker Southeast

County Johnson

State Kansas

Location

3801' FSL & 4813' FEL

NW-1/4-SW-1/4

Other Services

Perforate

Sec. 30

Typ. 14S

Eye 22e

Elevation NA

Permanent Datum GL

Log Measured From GL

Drilling Measured From GL

Elevation K.B. NA

D.F. NA

G.L. NA

Date 05-14-2011

Run Number One

Depth Driller 990.0

971.5

Bottom Logged Interval 995.5

Top Log Interval 100.0

Fluid Level

Fluid

Water

Density / Viscosity NA

Salinity - PPM Cl NA

Max. Recorded Temp NA

Estimated Cement Top 0.0

Equipment No. 104

Location Osawatomie

Recorded By Gary Wandisch

Witnessed By Brad Kramer

BOREHOLE RECORD

RTUN	NO.	BIT	FROM	TO	SIZE	WGT.	FROM	TO
One	9.875"	0.0	83.1	7.00"	0.0	9.875"	83.1	83.1
Two	5.825"	83.1	990.0	2.875"	0.0			875.0
Three								

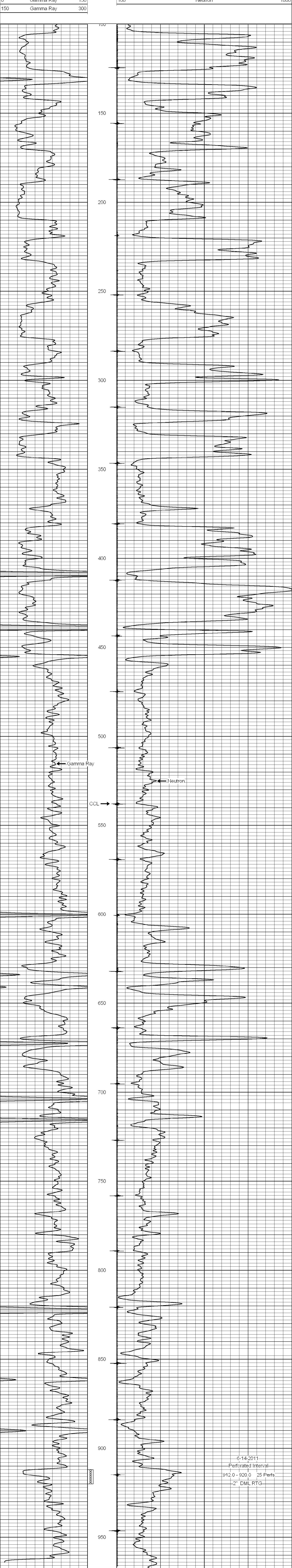
<<< Fold Here >>>

All interpretations are opinions based on inferences from electrical or other measurements and we cannot and do not guarantee the accuracy or correctness of any interpretation, and we shall not, except in the case of gross or willful negligence on our part, be liable or responsible for any loss, costs, damages, or expenses incurred or sustained by anyone resulting from any interpretation made by any of our officers, agents or employees. These interpretations are also subject to our general terms and conditions set out in our current Price Schedule.

Comments

Drilling Contractor :
 Evans Energy & Development, Inc.

Database File: lgnkr16i.db
 Dataset Pathname: pass1
 Presentation Format: gr-n-ccl
 Dataset Creation: Tue Jun 14 09:21:08 2011 by Log Warrior Version 5.6
 Charted by: Depth in Feet scaled 1:240



Gamma Ray	Neutron
0	100
150	1800