



**MIDWEST SURVEYS**  
 LOGGING - PERFORATING - CONSULTING SERVICES  
 P.O. Box 68, Osawatomie, KS 68064  
 913.755.2128

**GAMMA RAY / NEUTRON / CCL**

File No. \_\_\_\_\_

Company Phayn Resources, LLC.

Well Longanecker No - 29

Field Longanecker Southeast

County Johnson State Kansas

Location 3761' FSL & 4054' FEL

NE-NE-SW-NW

Other Services Perforate

Sec. 30 Typ. 14S Fgs. 22e

Permanent Datum Log Measured From Drilling Measured From

Date 05-10-2011

Run Number 975.0

Depth Driller 962.0

Bottom Logged Interval 960.0

Top Log Interval 100.0

Fluid Level

Type Fluid Water

Density / Viscosity NA

Salinity - PPM Cl NA

Max. Recorded Temp NA

Estimated Cement Top 0.0

Equipment No. Location 104 Osawatomie

Recorded By Gary Windisch

Witnessed By Brad Kramer

BOREHOLE RECORD		CASING RECORD				
NO.	BIT	TO	SIZE	WGT.	FROM	TO
One	9.875"	0.0	7.00"	84.6	0.0	84.6
Two	5.825"	84.6	9.75.0	2.875"	0.0	962.5
Three						

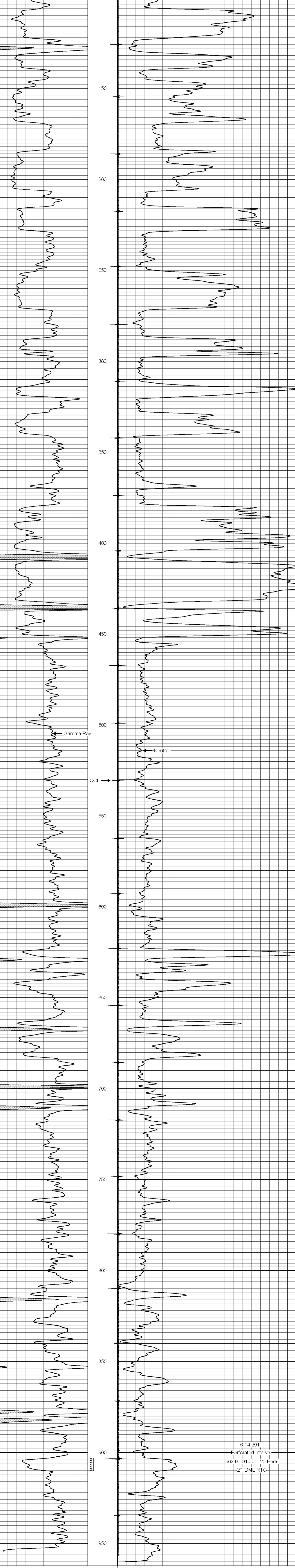
<<< Fold Here >>>

All interpretations are opinions based on inferences from electrical or other measurements and we cannot and do not guarantee the accuracy or correctness of any interpretation, and we shall not, except in the case of gross or willful negligence on our part, be liable or responsible for any loss, costs, damages, or expenses incurred or sustained by anyone resulting from any interpretation made by any of our officers, agents or employees. These interpretations are also subject to our general terms and conditions set out in our current Price Schedule.

Comments

Drilling Contractor :  
 Evans Energy & Development, Inc.

Database File: lgnkr29.db  
 Dataset Pathname: pass1  
 Presentation Format: gr-n-ccl  
 Dataset Creation: Fri Jun 10 14:31:50 2011 by Log Warrior Version 6.6  
 Charted by: Depth in Feet scaled 1:240



6-14-2011  
 Perforated Interval  
 903.0 - 910.0 22 Perfs  
 2" DML RTG