



MIDWEST SURVEYS
 LOGGING - PERFORATING - CONSULTING SERVICES
 P.O. Box 68, Oskawatomie, KS 66084
 913 / 755 - 2128

GAMMA RAY / NEUTRON / CCL

File No. _____

Company Phayn Resources, LLC.

Well Longanecker No. 1-19

Field Longanecker Southeast

County Johnson State Kansas

Location 3537 FSL & 4259' FEL

NE-SW-NW

Other Services Perforate

Sec. 30 Typ. 14s Rge. 22e

Permanent Datum Log Measured From Drilling Measured From

GL GL GL

Elevation K.B. NA D.F. NA G.L. NA

Date 05-14-2011

Run Number 990.0

Depth Driller 940.5

Bottom Logged Interval 938.5

Top Log Interval 100.0

Fluid Level Full

Fluid Level

Type Fluid Water

Density / Viscosity NA NA

Salinity - PPM Cl NA NA

Max. Recorded Temp NA NA

Estimated Cement Top NA NA

Equipment No. Location 104 Oskawatomie

Recorded By Gary Winkisch

Witnessed By Brad Kramer

BORE-HOLE RECORD

RUN No. BIT FROM TO SIZE WGT. FROM TO

One 9.875" 0.0 84.6 7.00" 0.0 84.6

Two 5.825" 84.6 990.0 2.875" 0.0 945.5

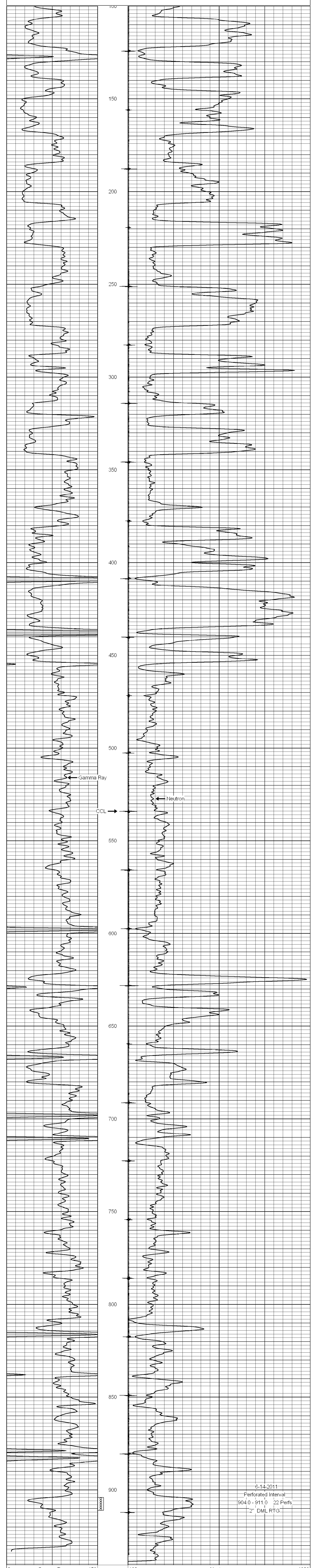
<<< Fold Here >>>

All interpretations are opinions based on inferences from electrical or other measurements and we cannot and do not guarantee the accuracy or correctness of any interpretation, and we shall not, except in the case of gross or willful negligence on our part, be liable or responsible for any loss, costs, damages, or expenses incurred or sustained by anyone resulting from any interpretation made by any of our officers, agents or employees. These interpretations are also subject to our general terms and conditions set out in our current Price Schedule.

Comments

Drilling Contractor :
Evans Energy & Development, Inc.

Database File: Ignkr19i.db
 Dataset Pathname: pass1
 Presentation Format: gr-n-ccl
 Dataset Creation: Tue Jun 14 10:05:07 2011 by Log Warrior Version 6.6
 Charted by: Depth in Feet scaled 1:240



6-14-2011
 Perforated Interval
 904.0 - 911.0 22 Perfs
 2" DML RTG