



MIDWEST SURVEYS
 LOGGING - PERFORATING - CONSULTING SERVICES
 P.O. Box 68, Osawatomie, KS 68064
 913.755.2128

GAMMA RAY / NEUTRON / CCL

File No.

Company Phayn Resources, LLC.

Well Longanecker No - 27

Field Longanecker Southeast

County Johnson State Kansas

Location

3326' F.S.L & 4416' FEL

SE-NW-SW-NW

Other Services

Perforate

Sec. 30 Twp. 14S Rge. 22E

Permanent Datum Log Measured From Drilling Measured From

GL GL GL

Elevation

K.B. NA D.F. NA G.L. NA

Date 09-10-2011

Run Number One

Depth Logger 990.0

Bottom Logged Interval 942.0

Top Log Interval 1000.0

Fluid Level Full

Fluid Level

Type Fluid Water

Density / Viscosity NA

Salinity - PPM Cl NA

Max. Recorded Temp NA

Estimated Cement Top 0.0

Equipment No. Location 104 Osawatomie

Recorded By Gary Winkisch

Missed By Brad Kramer

BOREHOLE RECORD

RUN No. BIT FROM TO SIZE WGT. FROM TO

One 9.875" 0.0 86.3 7.00" 0.0 86.3

Two 5.625" 86.3 990.0 2.875" 0.0 844.0

Three

API # 15-091-23.443

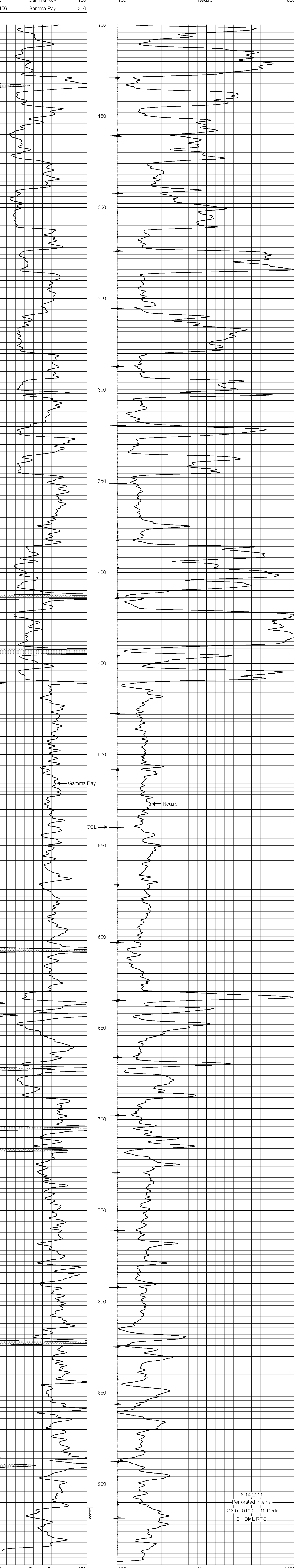
<<< Fold Here >>>

All interpretations are opinions based on inferences from electrical or other measurements and we cannot and do not guarantee the accuracy or correctness of any interpretation, and we shall not, except in the case of gross or willful negligence on our part, be liable or responsible for any loss, costs, damages, or expenses incurred or sustained by anyone resulting from any interpretation made by any of our officers, agents or employees. These interpretations are also subject to our general terms and conditions set out in our current Price Schedule.

Comments

Drilling Contractor :
 Evans Energy & Development, Inc.

Database File: lgnkr27.db
 Dataset Pathname: pass1
 Presentation Format: gr-n-ccl
 Dataset Creation: Fri Jun 10 13:08:52 2011 by Log Warrior Version 6.6
 Charted by: Depth in Feet scaled 1:240



0 Gamma Ray 150 100 Neutron 1800
 150 Gamma Ray 300