



Pioneer Energy Services

# Dual Induction Log

15-015-24,001-00-00

API No.

Company **Vess Oil Corporation**  
 Well **Wilson A #449**  
 Field **El Dorado**  
 County **Butler** State **Kansas**

Location  
 NE SE NW NW  
 950' FNL & 1265' FWL

Sec: **9** Twp: **25S** Rge: **5E**

Other Services  
 CNL/CDL  
 MEL

Permanent Datum Ground Level Elevation 1363  
 Log Measured From Kelly Bushing 6 Ft. Above Perm. Datum  
 Drilling Measured From Kelly Bushing

Elevation  
 K.B. 1369  
 D.F.  
 G.L. 1363

Date	11/3/2013
Run Number	One
Depth Driller	2443
Depth Logger	2443
Bottom Logged Interval	2442
Top Log Interval	00
Casing Driller	8.625 @ 253
Casing Logger	260
Bit Size	7.875
Type Fluid in Hole	Chemical
Salinity, ppm CL	900
Density / Viscosity	9.3 49
pH / Fluid Loss	8.5 9.4
Source of Sample	Flowline
Rm @ Meas. Temp	2.2 @ 63
Rmf @ Meas. Temp	1.65 @ 63
Rmc @ Meas. Temp	2.97 @ 63
Source of Rmf / Rmc	Charts
Rm @ BHT	1.38 @ 100
Operating Rig Time	5 Hours
Max Rec. Temp. F	100
Equipment Number	15
Location	Hays
Recorded By	D. Kerr
Witnessed By	Roger Martin

<<< Fold Here >>>

All interpretations are opinions based on inferences from electrical or other measurements and we cannot and do not guarantee the accuracy or correctness of any interpretation, and we shall not, except in the case of gross or willful negligence on our part, be liable or responsible for any loss, costs, damages, or expenses incurred or sustained by anyone resulting from any interpretation made by any of our officers, agents or employees. These interpretations are also subject to our general terms and conditions set out in our current Price Schedule.

### Comments

Thank you for using Pioneer Energy Services  
[www.pioneerenergy.com](http://www.pioneerenergy.com)  
 785 625 3858

Potwin KS, East and South to 40RD,  
 2 East, 1/2 North at Cattle Guard, East Into

Database File: c:\warrior\data\vess\_wilson a #449\vess\_wilson\_a\_449hd.db  
 Dataset Pathname: DIL/vessstk  
 Presentation Format: dil2in  
 Dataset Creation: Sun Nov 03 04:48:18 2013  
 Charted by: Depth in Feet scaled 1:600

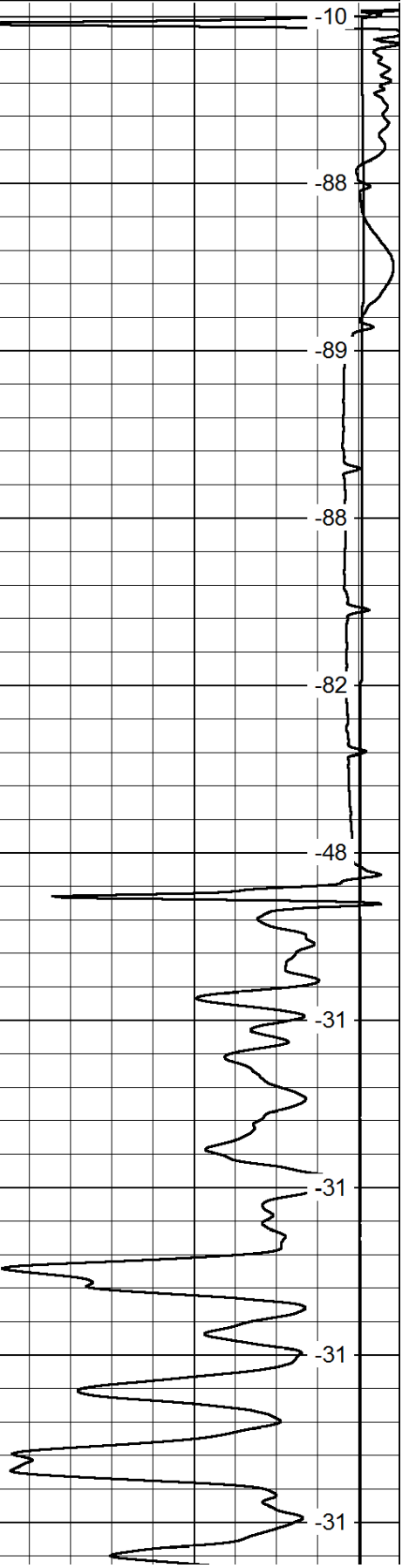
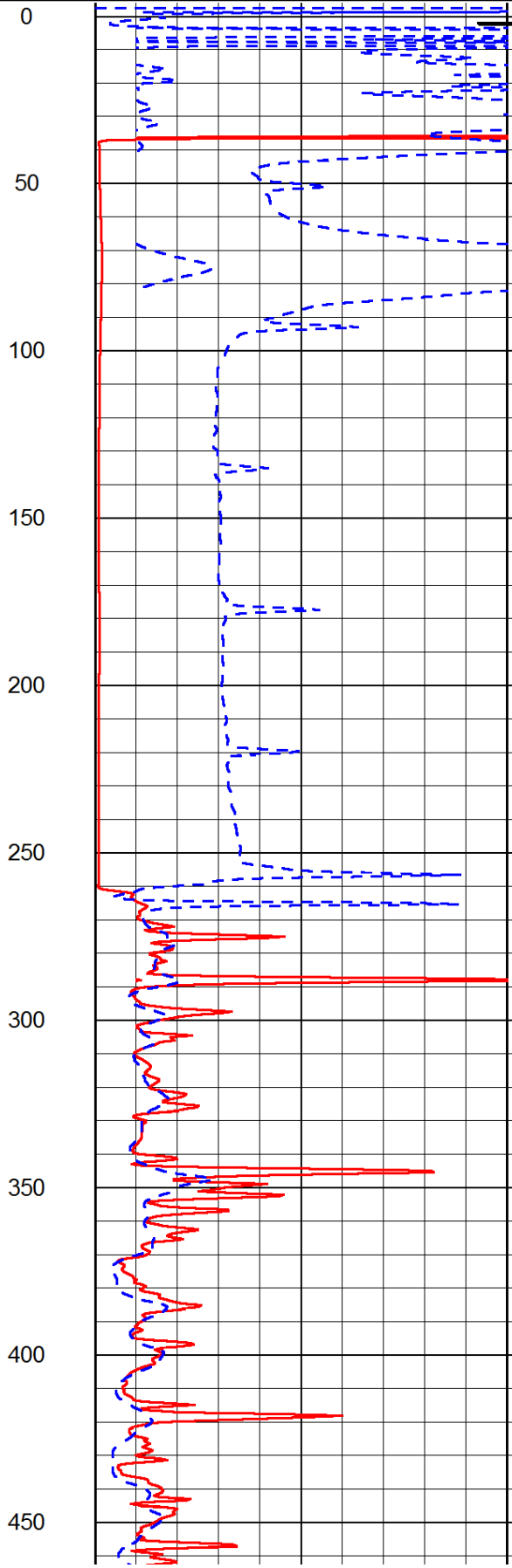
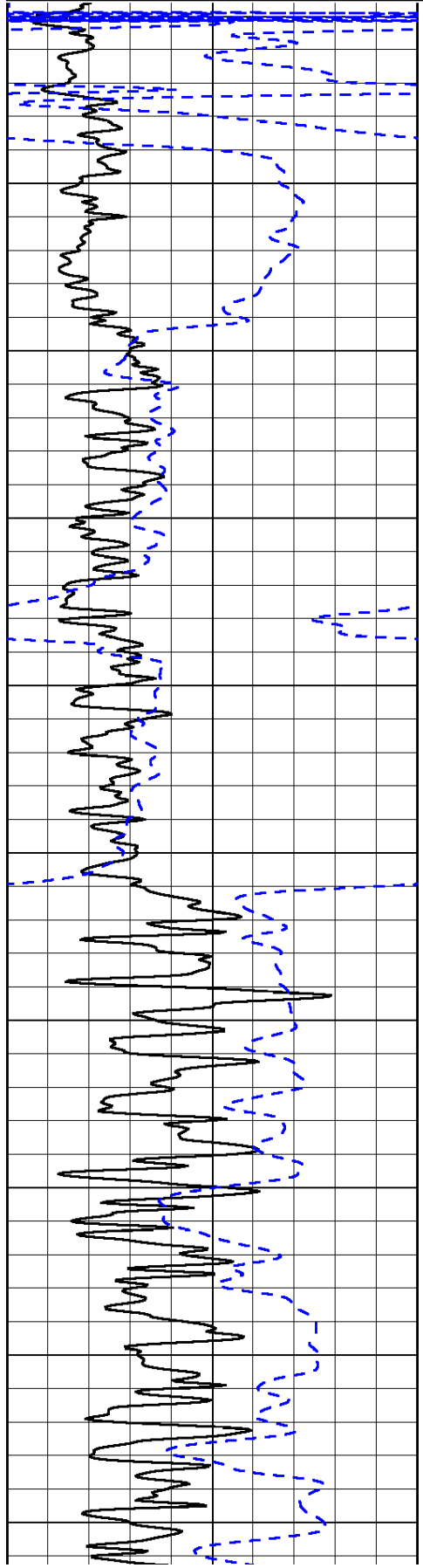
0	Gamma Ray	150
-200	SP (mV)	0

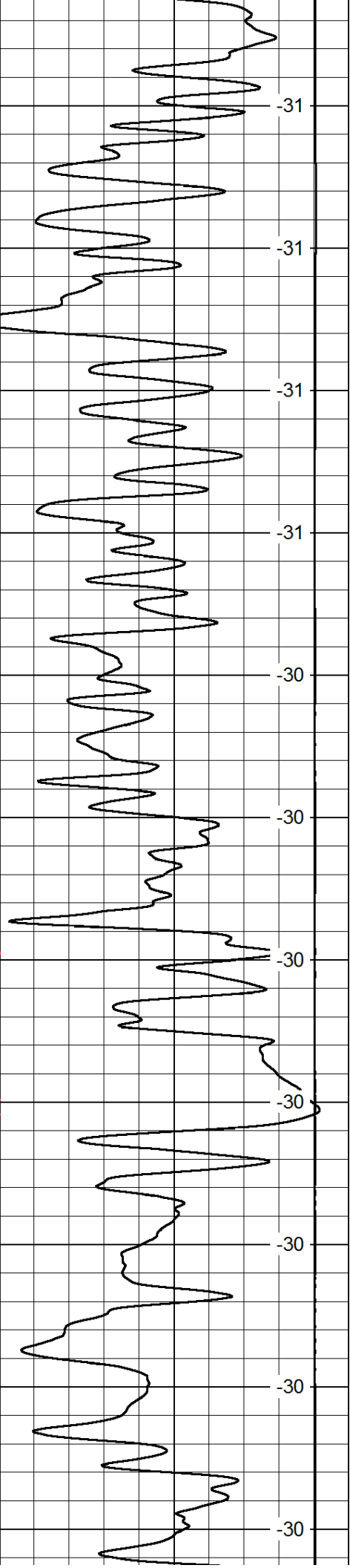
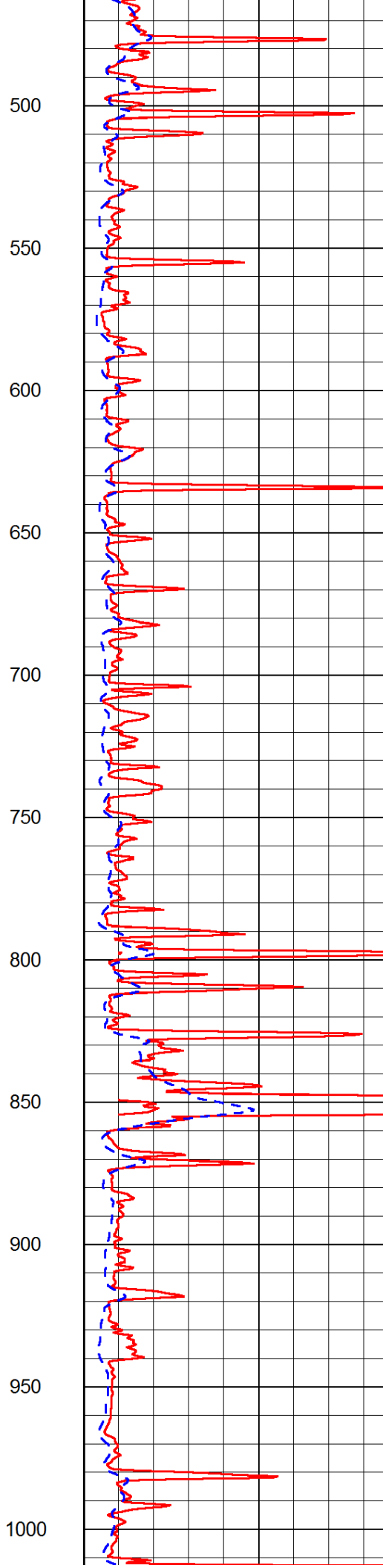
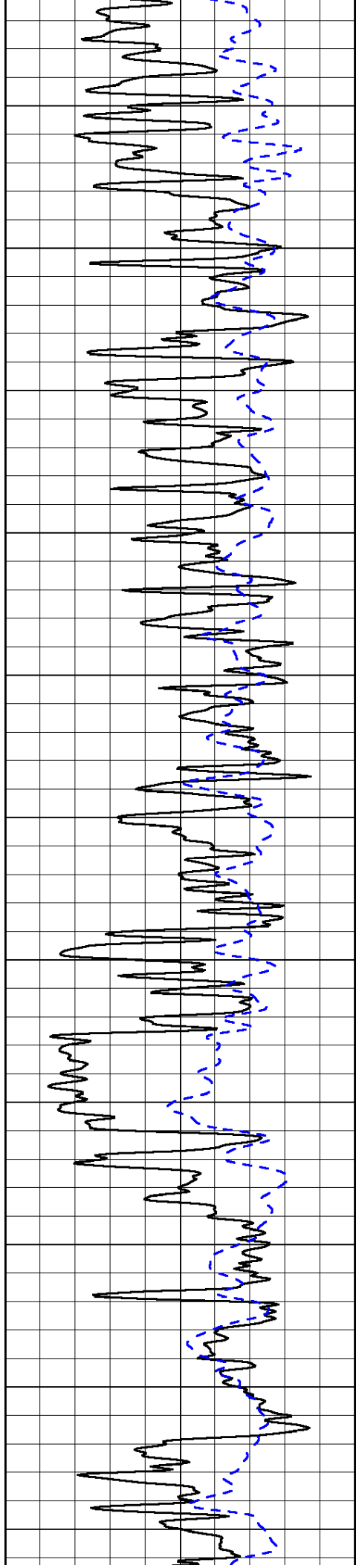
0	Shallow Resistivity	50
0	Deep Resistivity	50

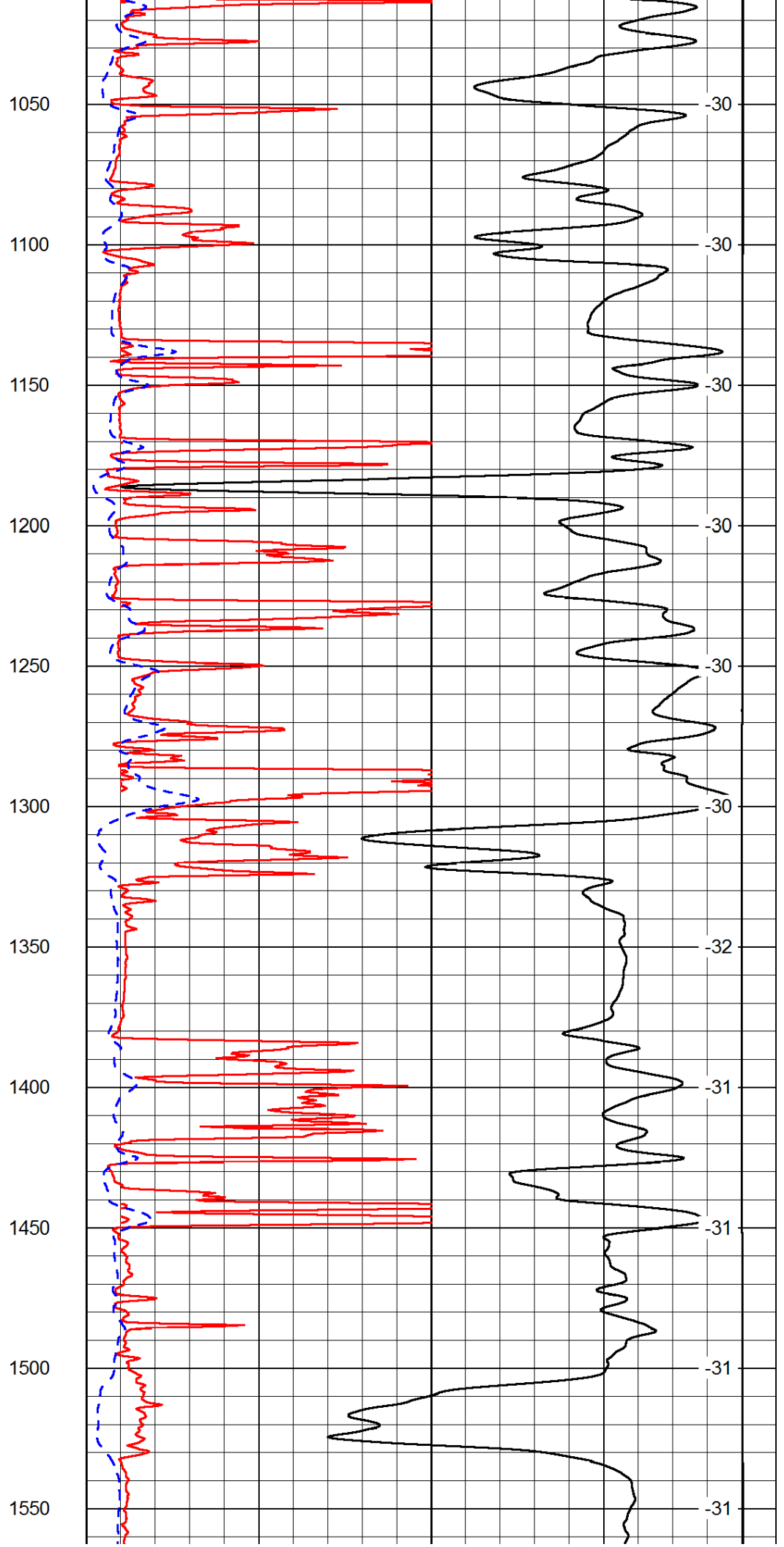
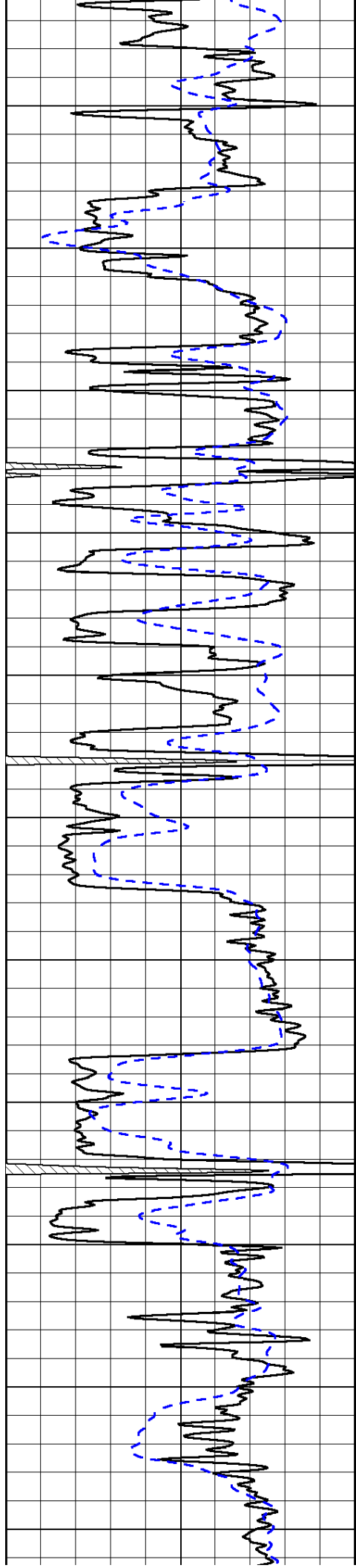
LSPD

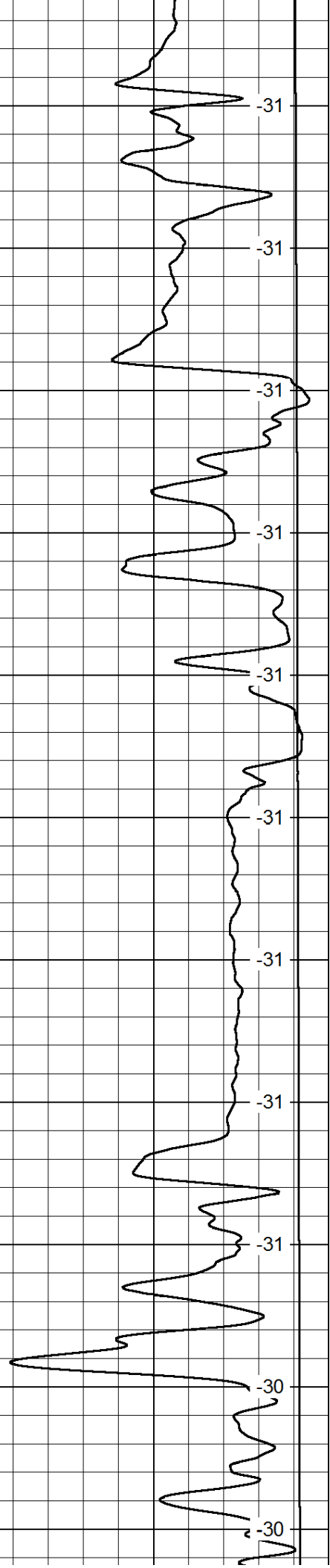
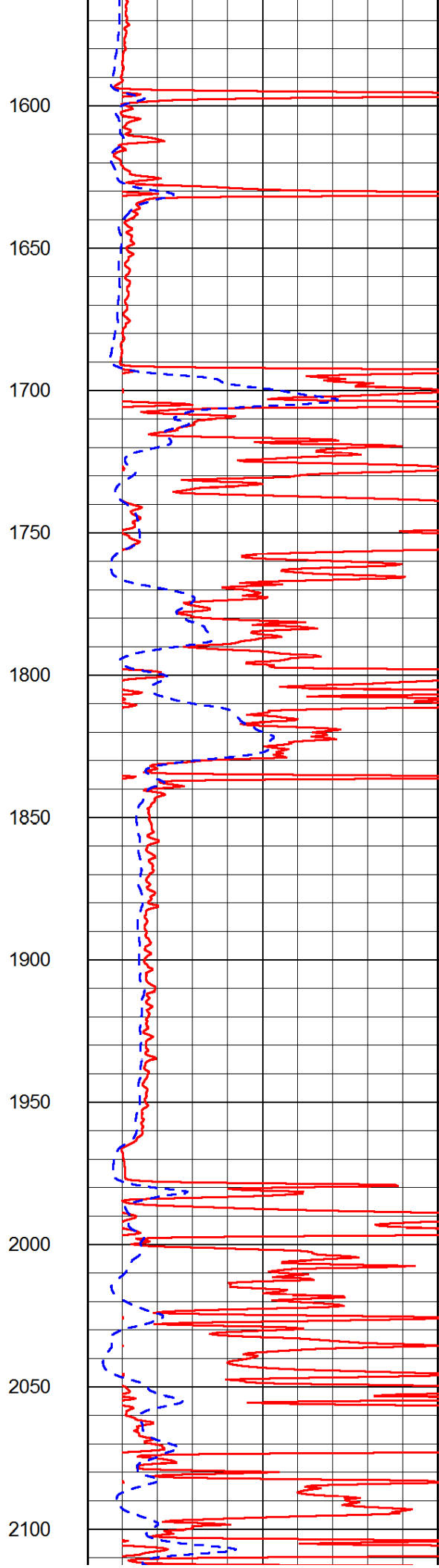
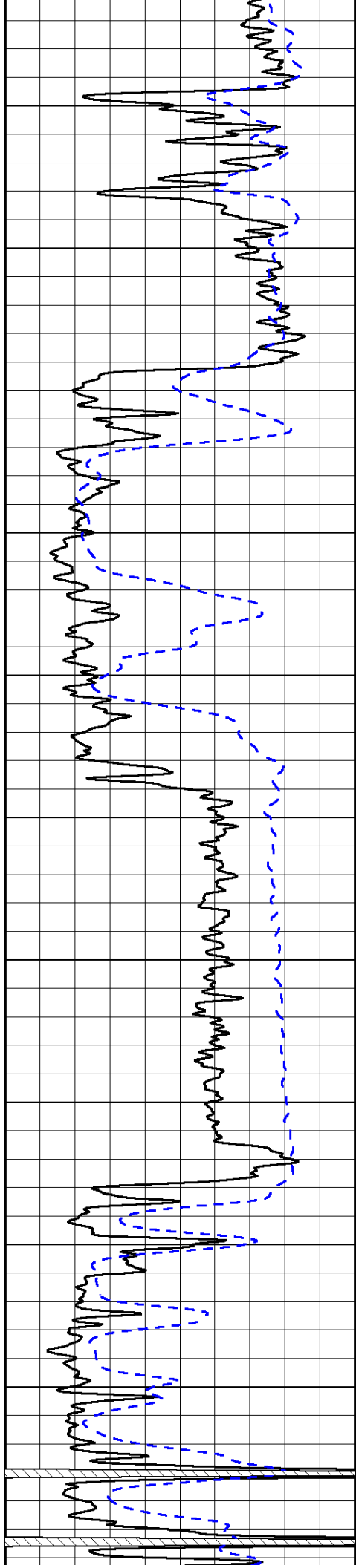
1000	Conductivity	0
15000	Line Tension	0

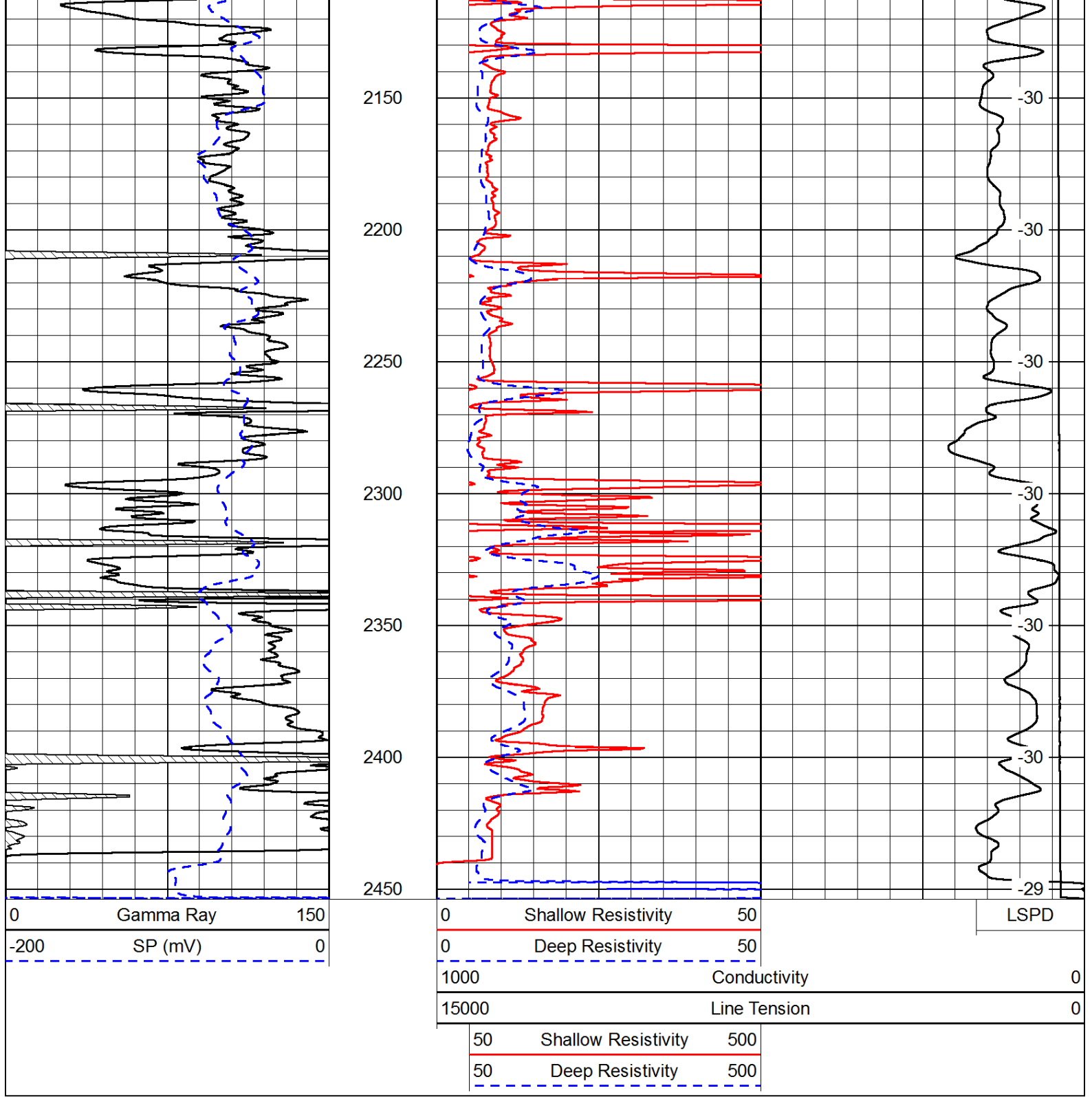
50	Shallow Resistivity	500
50	Deep Resistivity	500



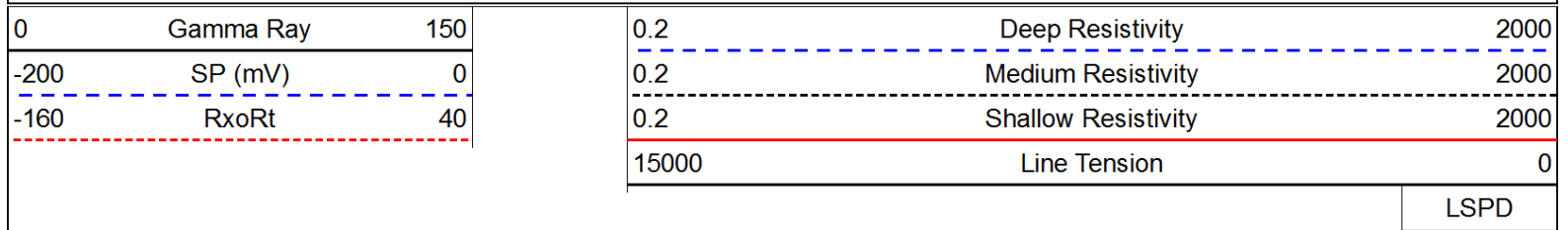


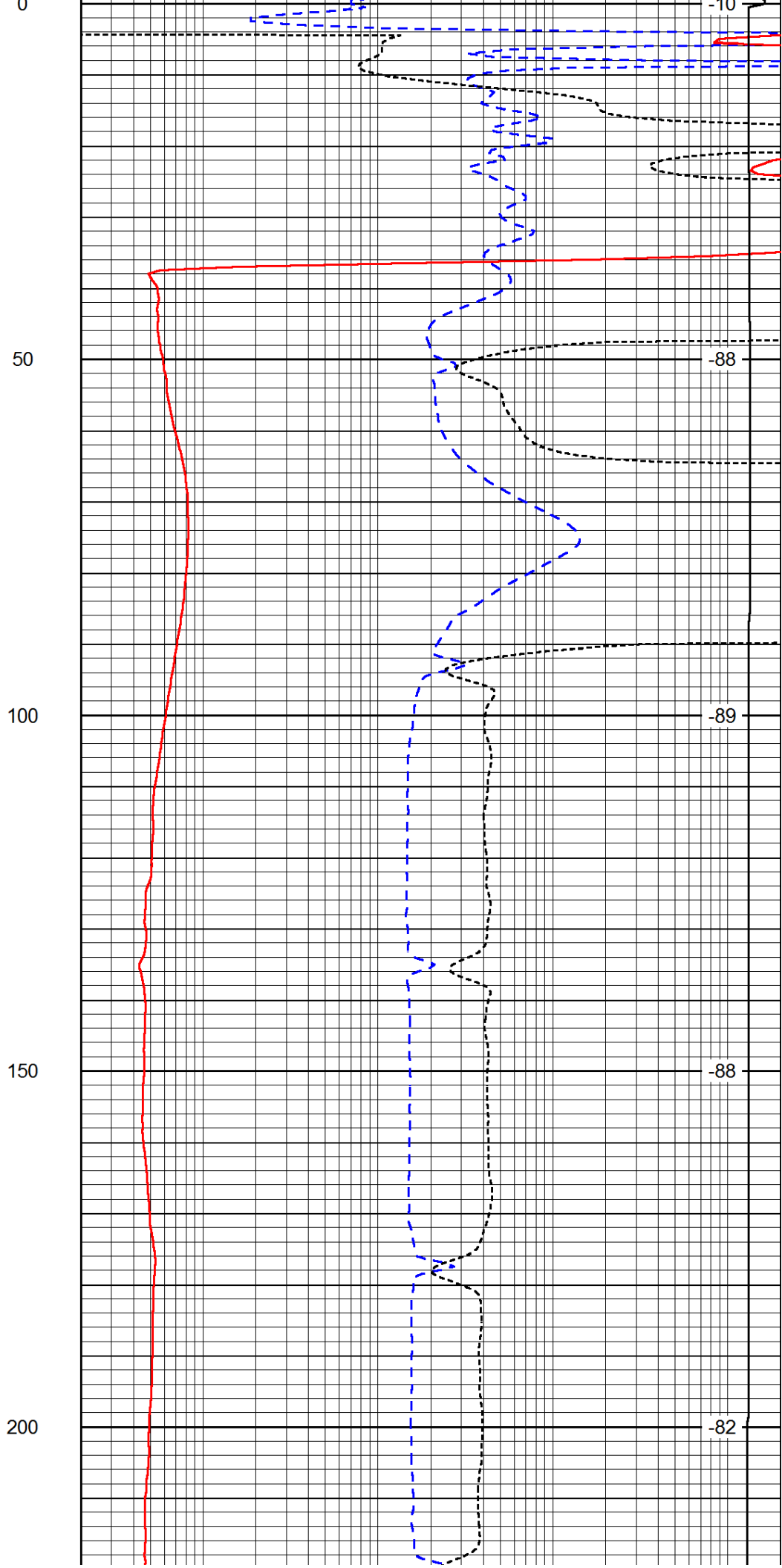
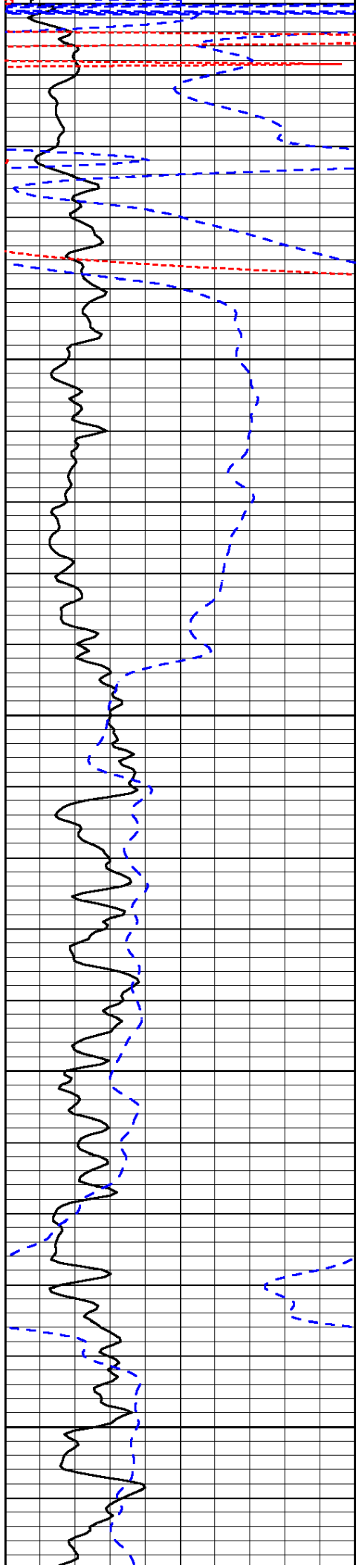


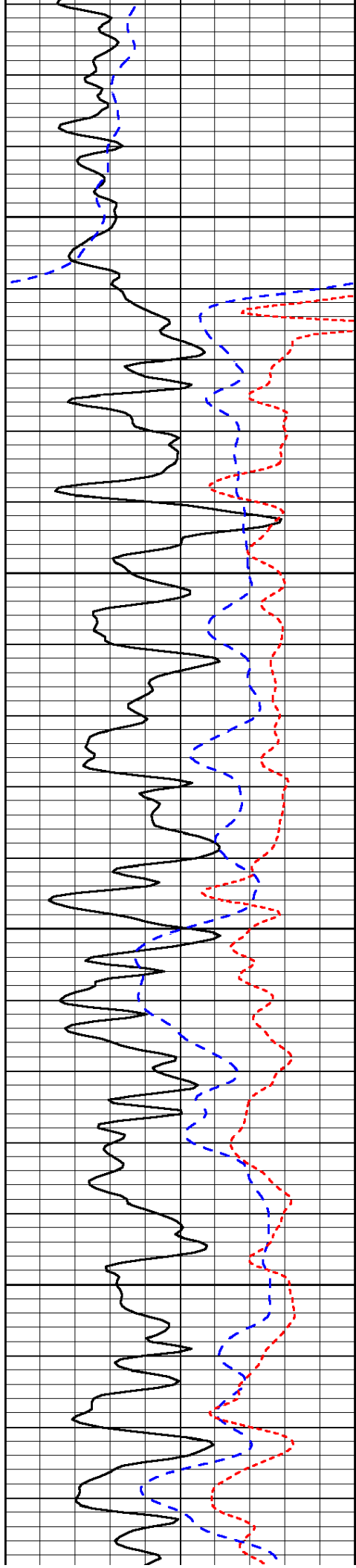




Database File: c:\warrior\data\vess\_wilson a #449\vess\_wilson\_a\_449hd.db  
 Dataset Pathname: DIL\vessstk  
 Presentation Format: dil  
 Dataset Creation: Sun Nov 03 04:48:18 2013  
 Charted by: Depth in Feet scaled 1:240





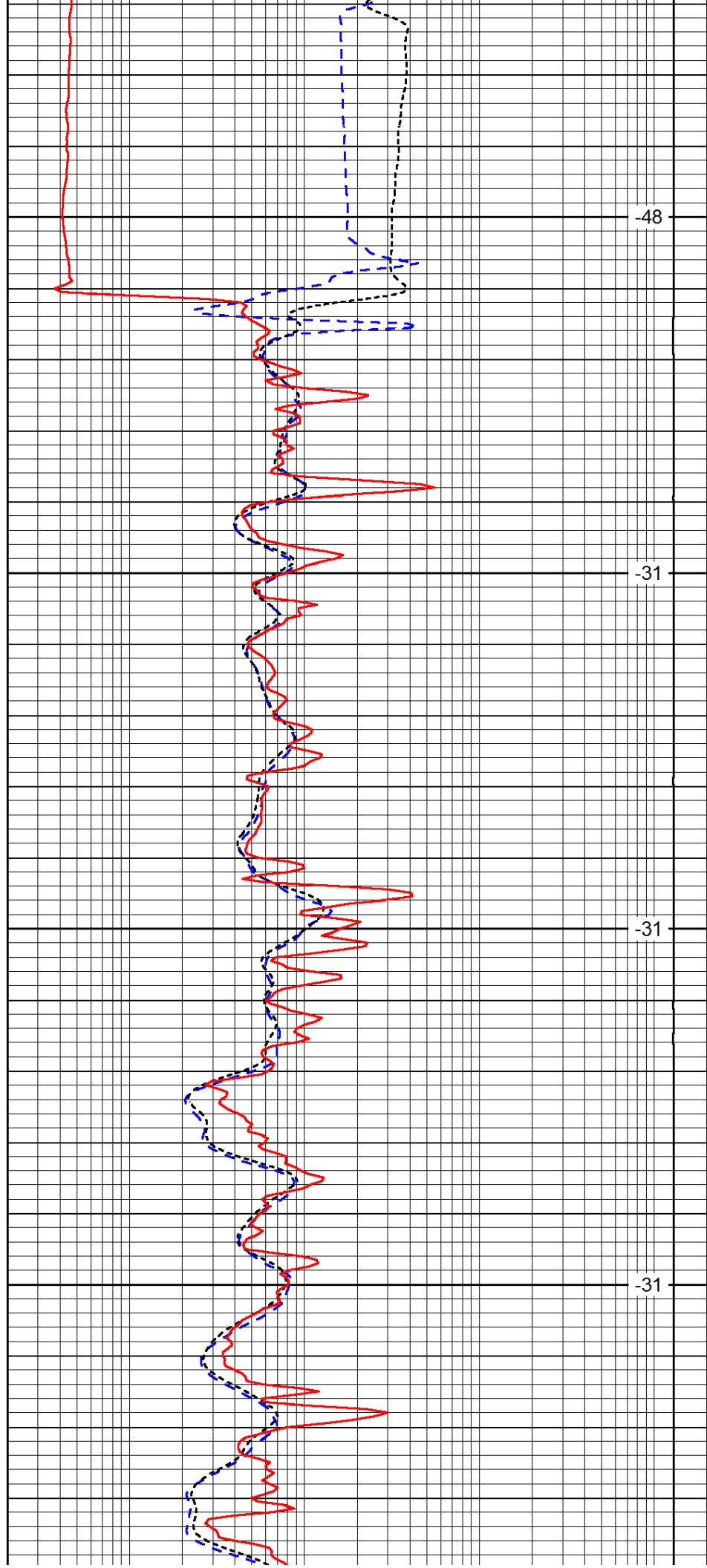


250

300

350

400



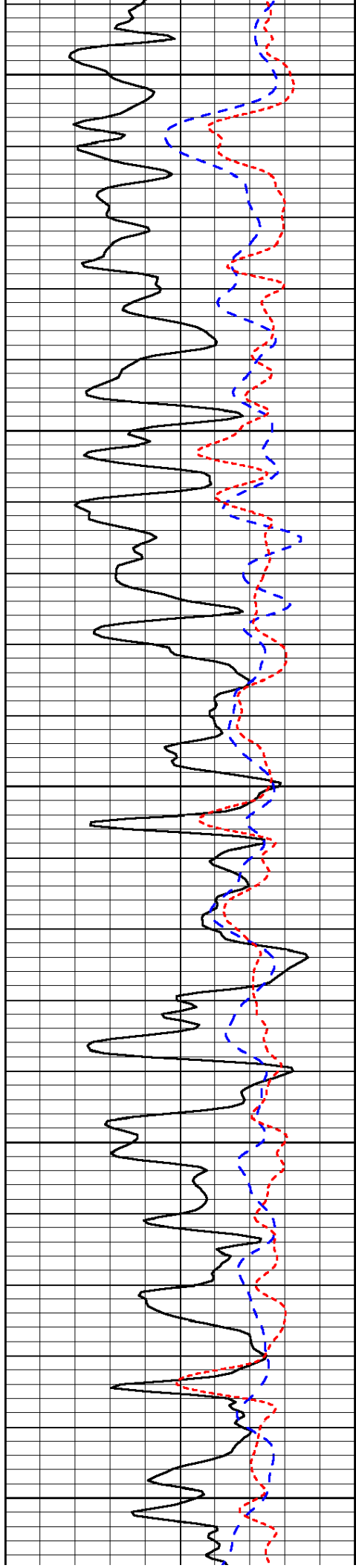
-48

-31

-31

-31





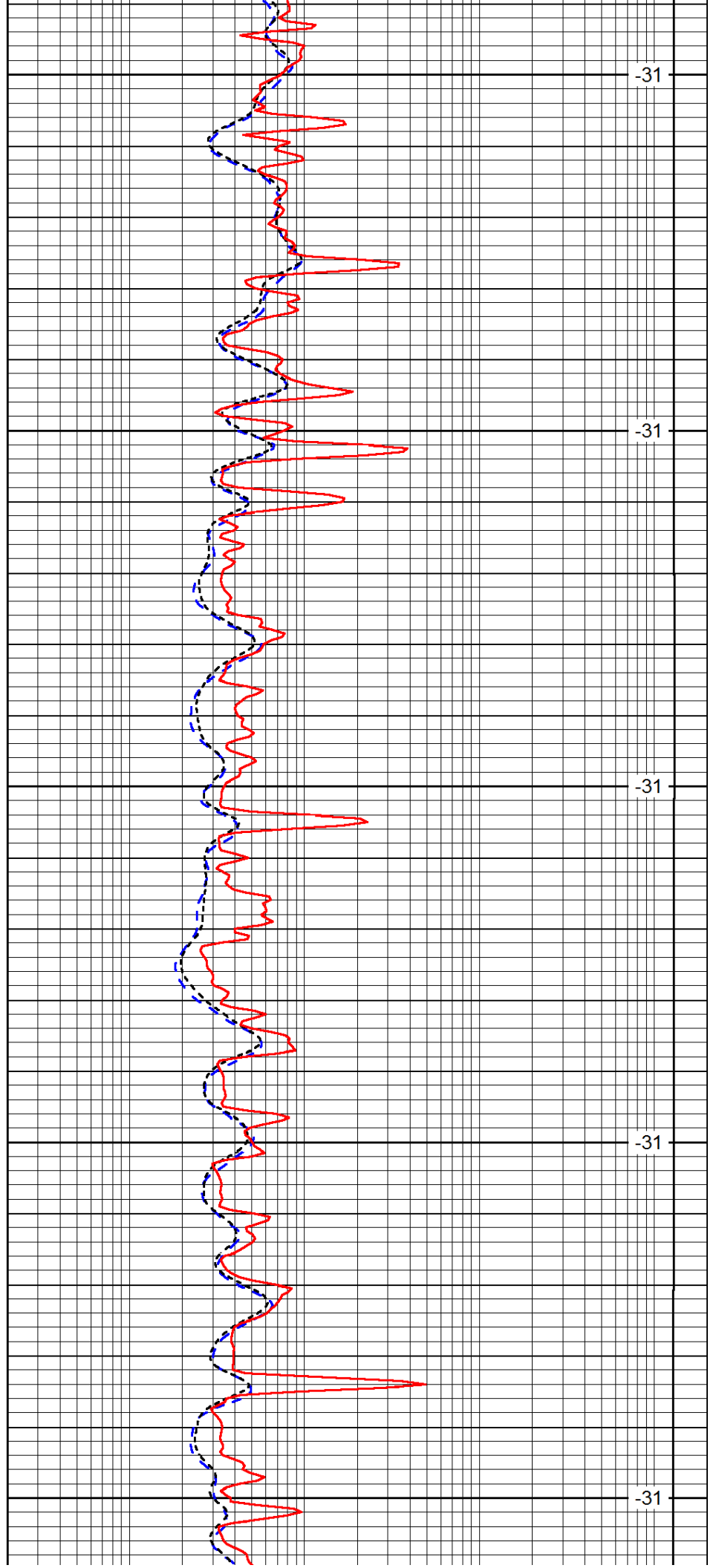
450

500

550

600

650



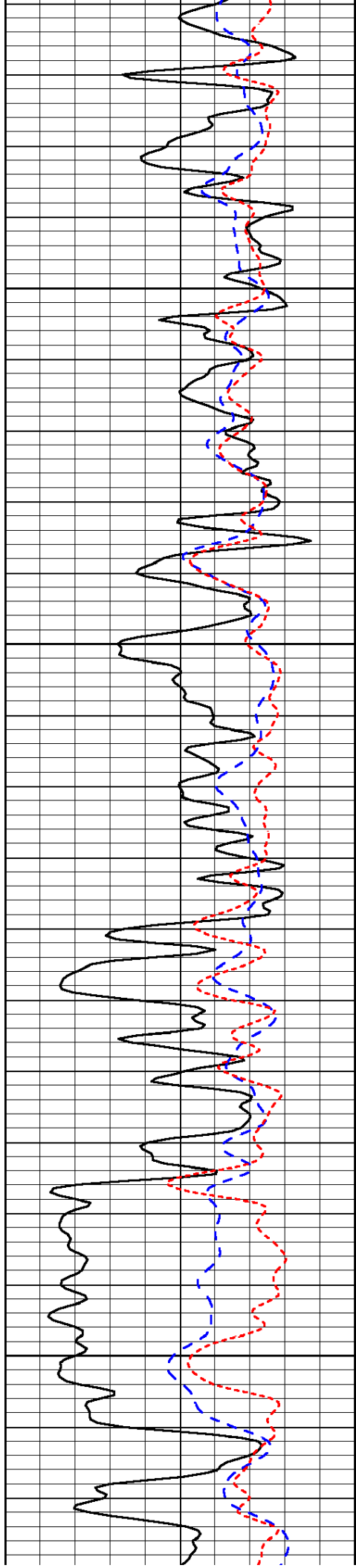
-31

-31

-31

-31

-31

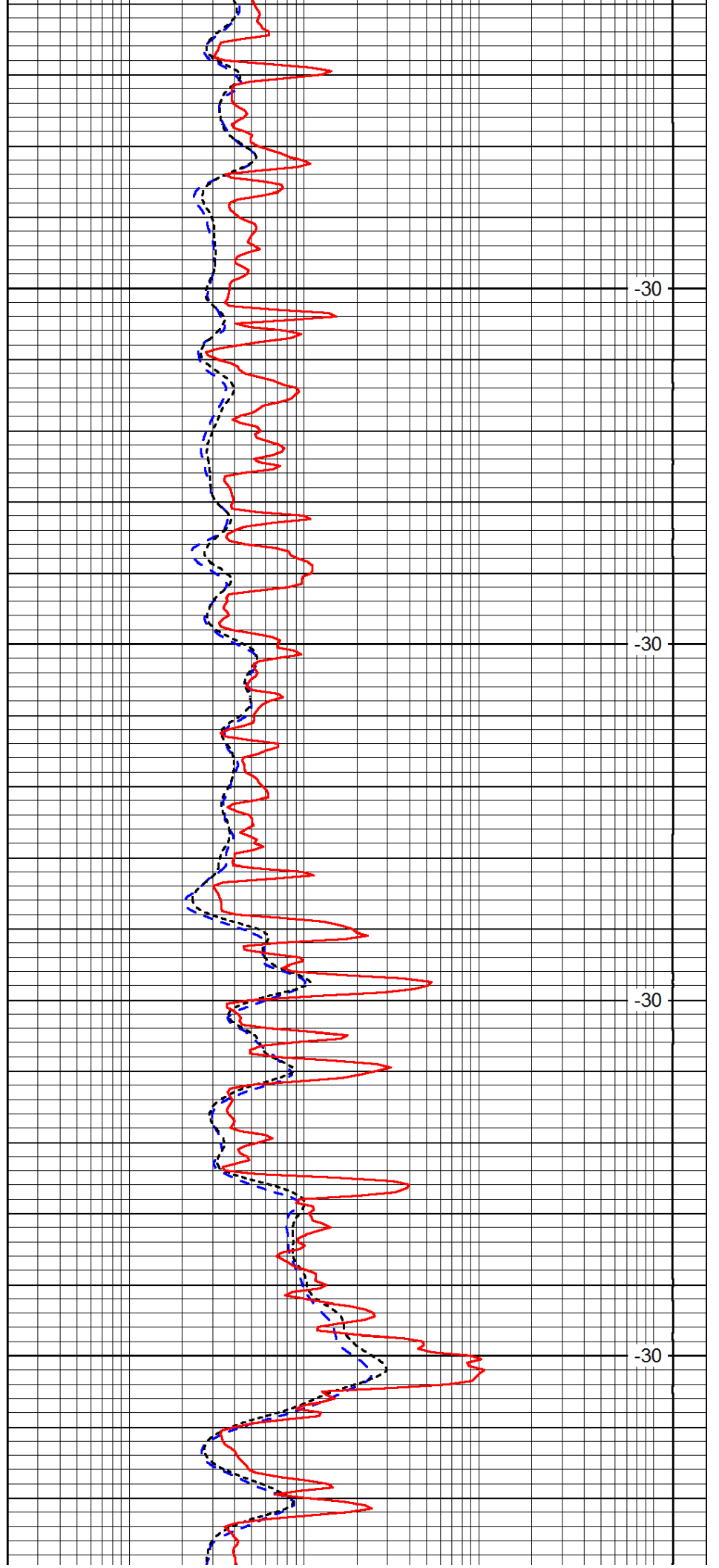


700

750

800

850

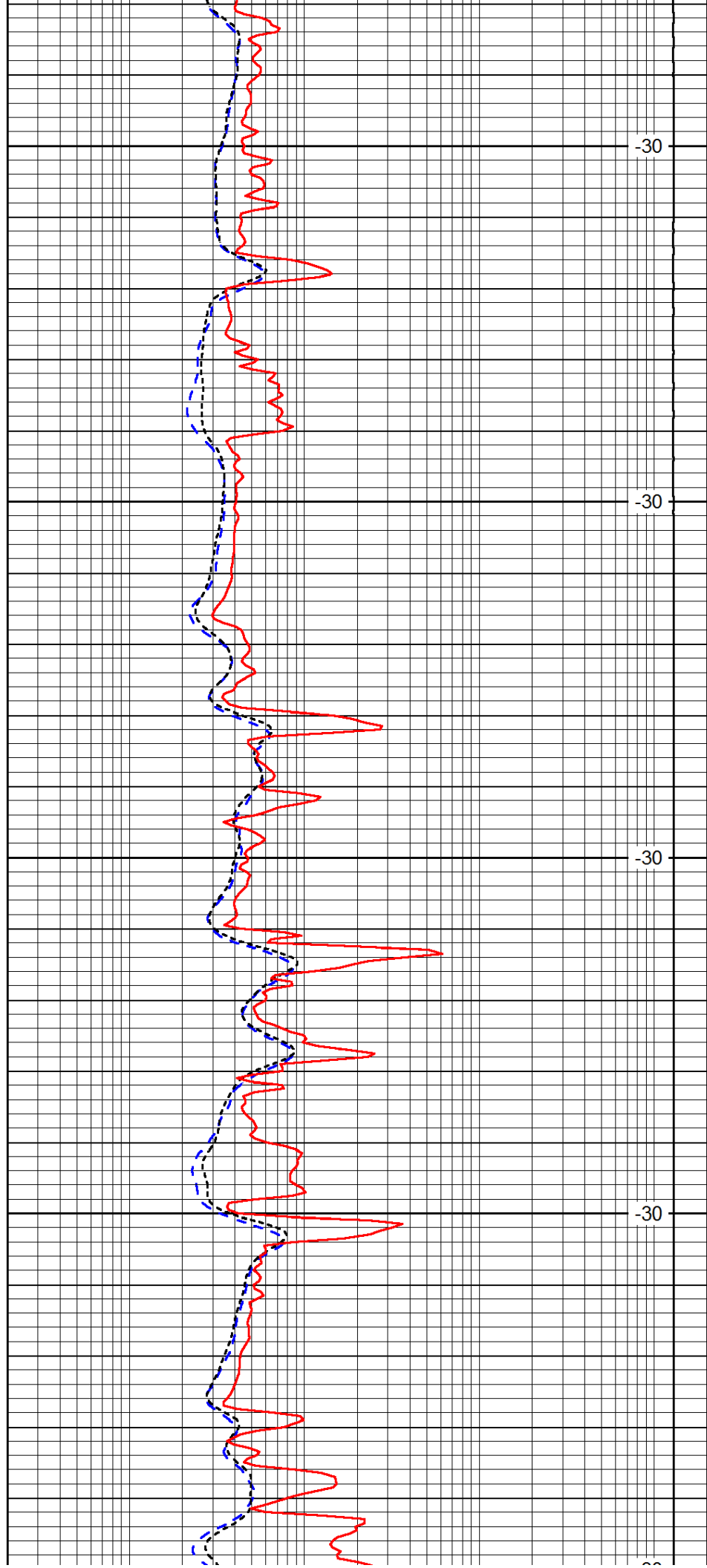
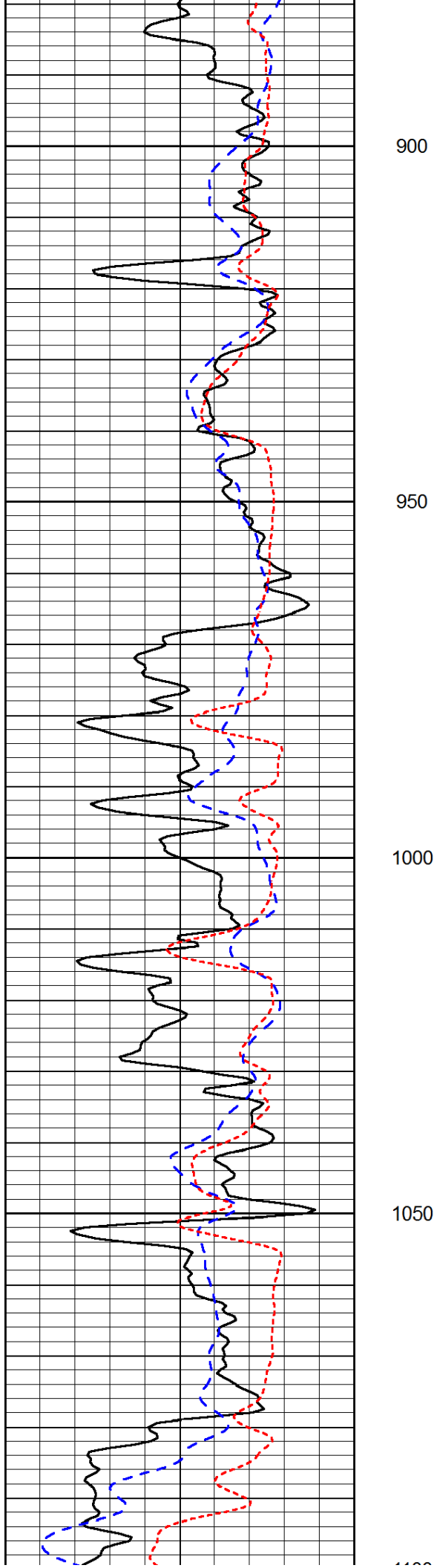


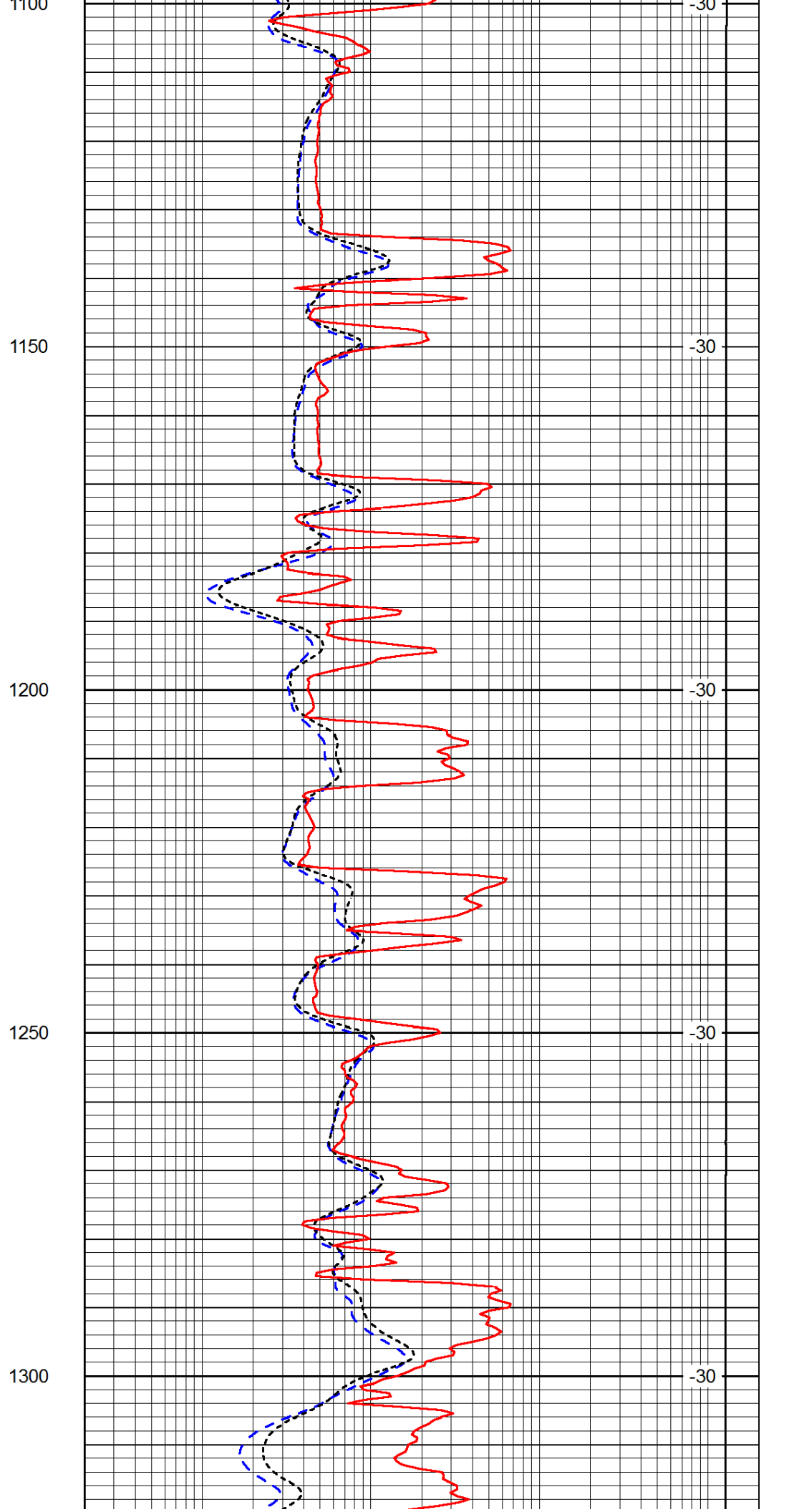
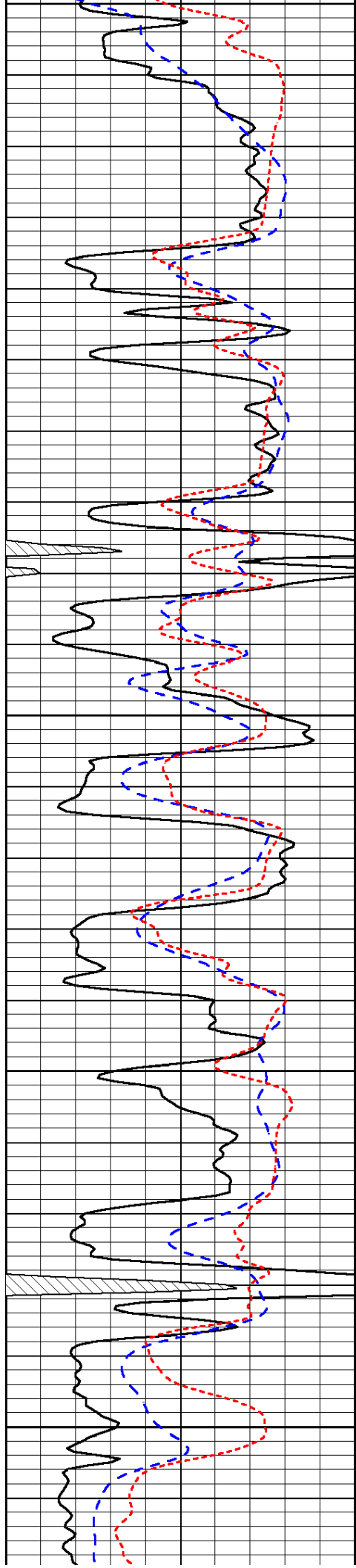
-30

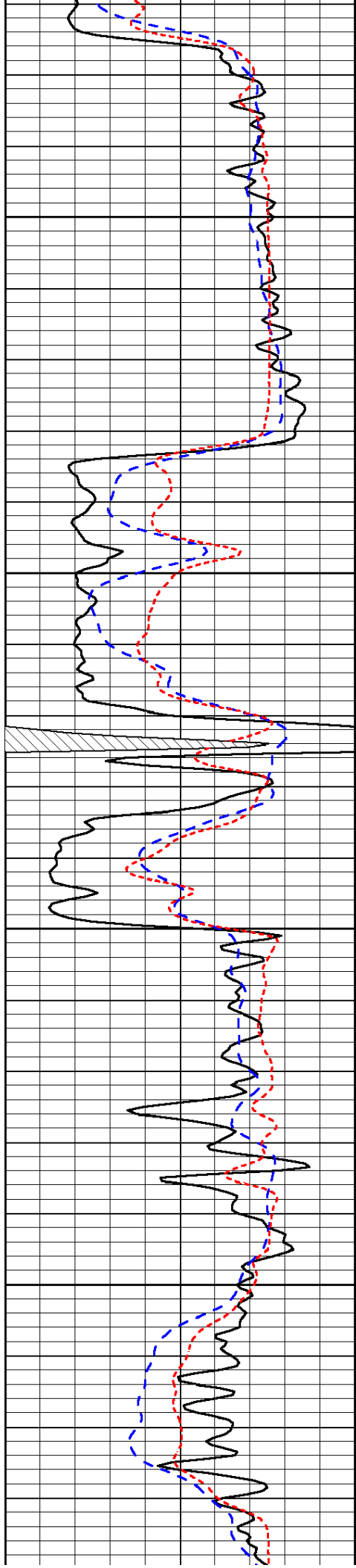
-30

-30

-30





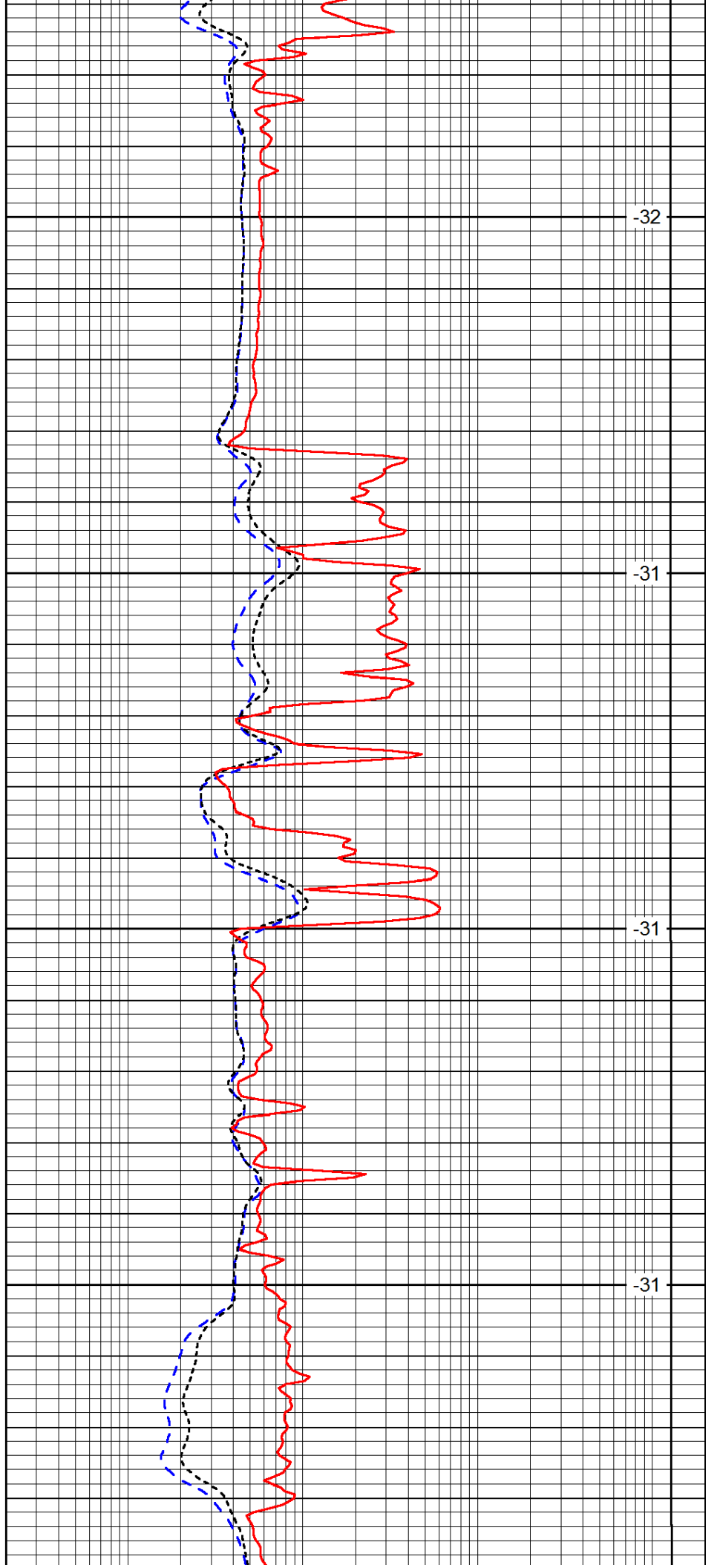


1350

1400

1450

1500

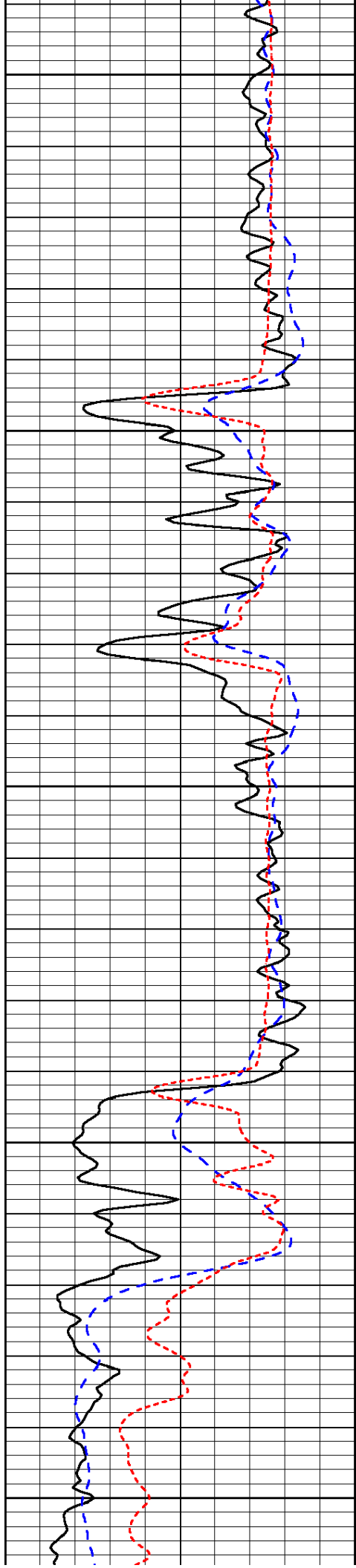


-32

-31

-31

-31



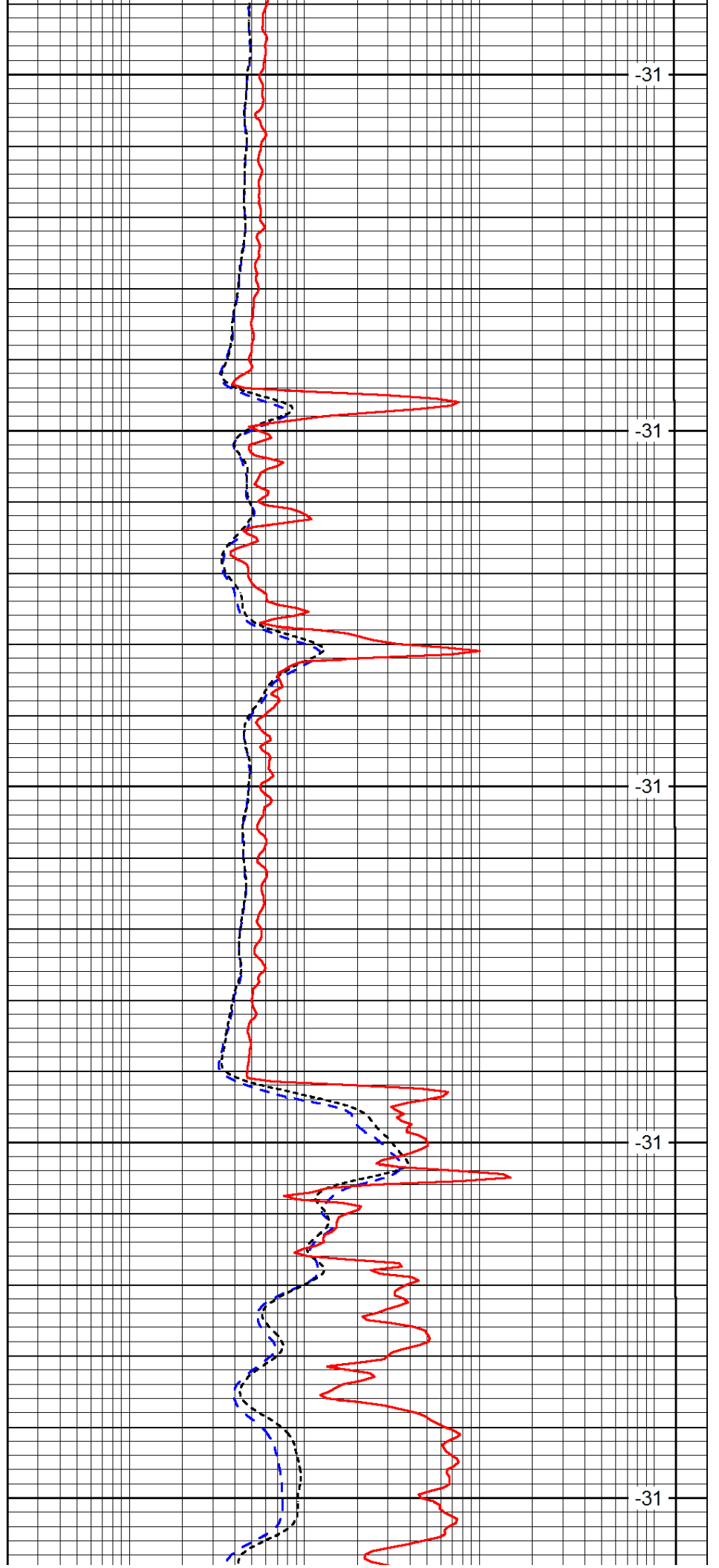
1550

1600

1650

1700

1750



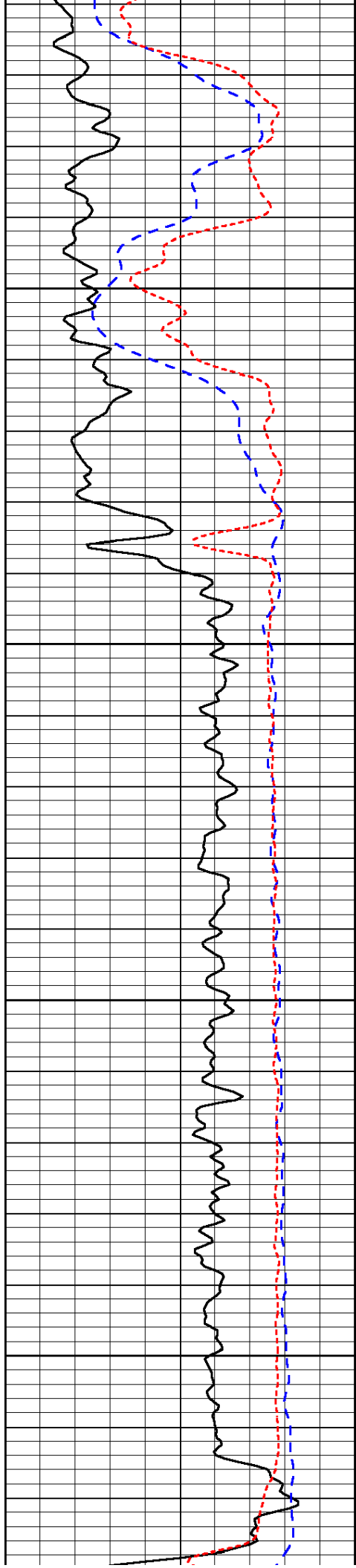
-31

-31

-31

-31

-31

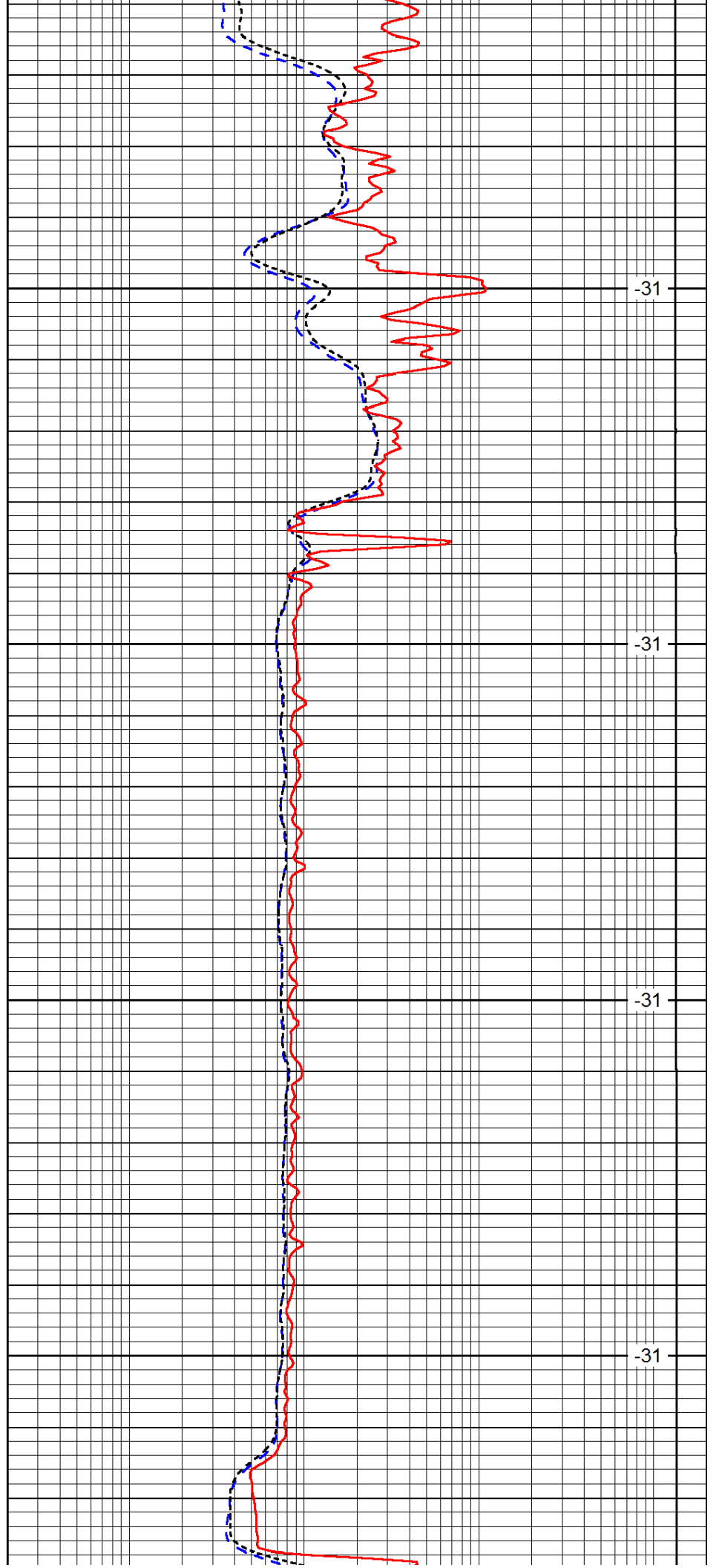


1800

1850

1900

1950

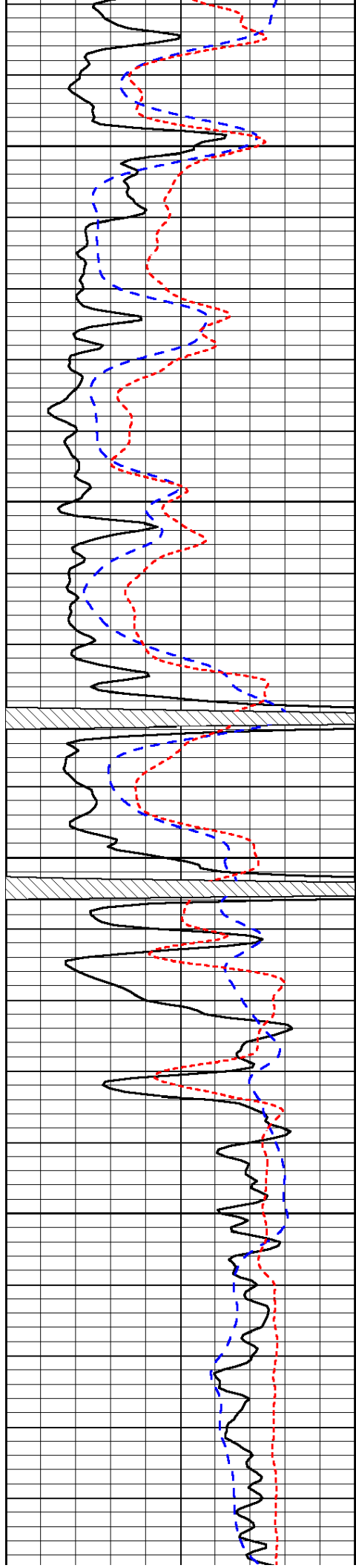


-31

-31

-31

-31



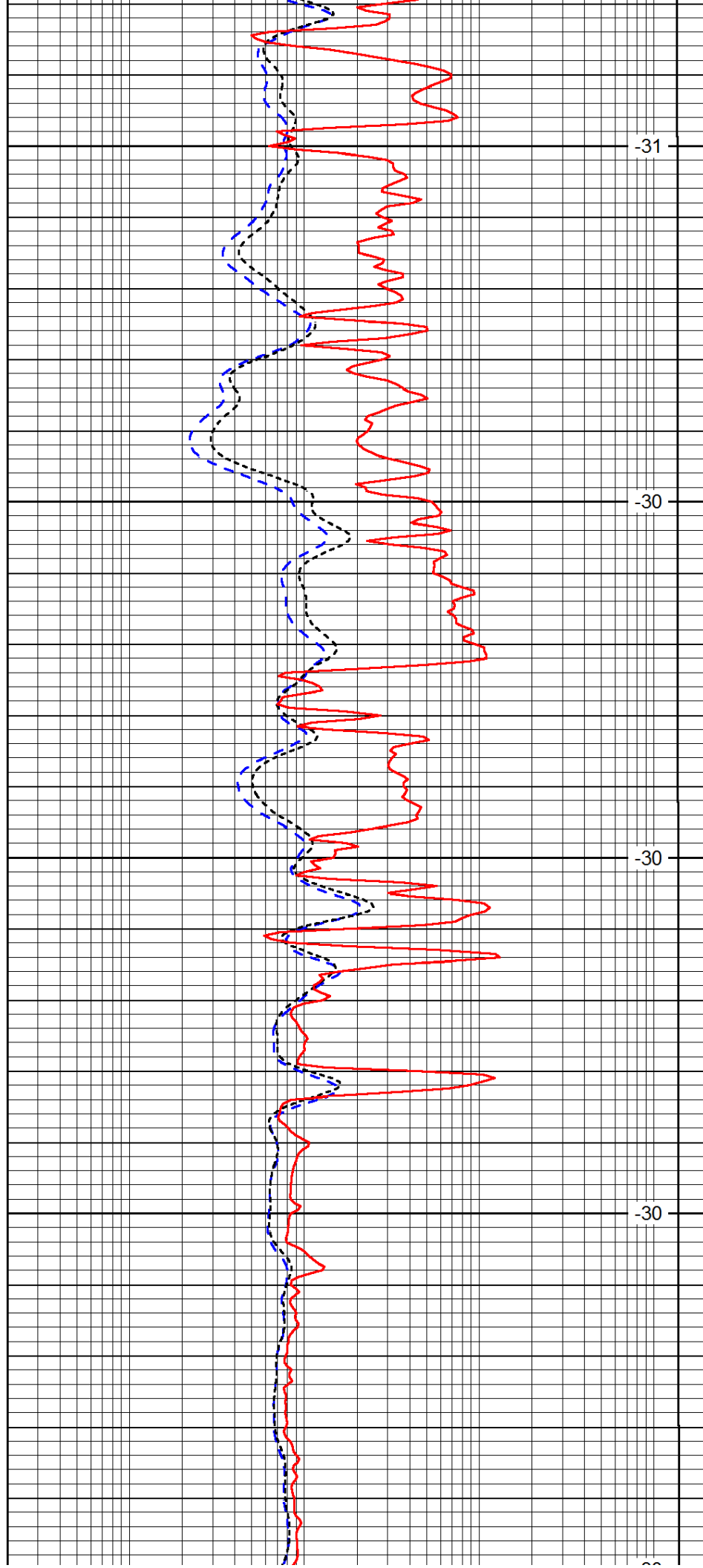
2000

2050

2100

2150

2200



-31

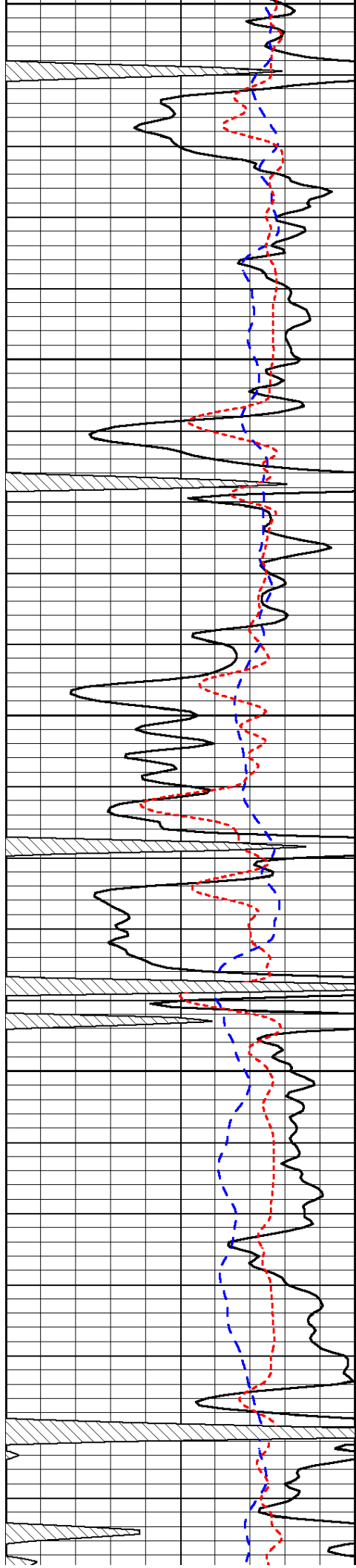
-30

-30

-30

-30





2200

2250

2300

2350

2400

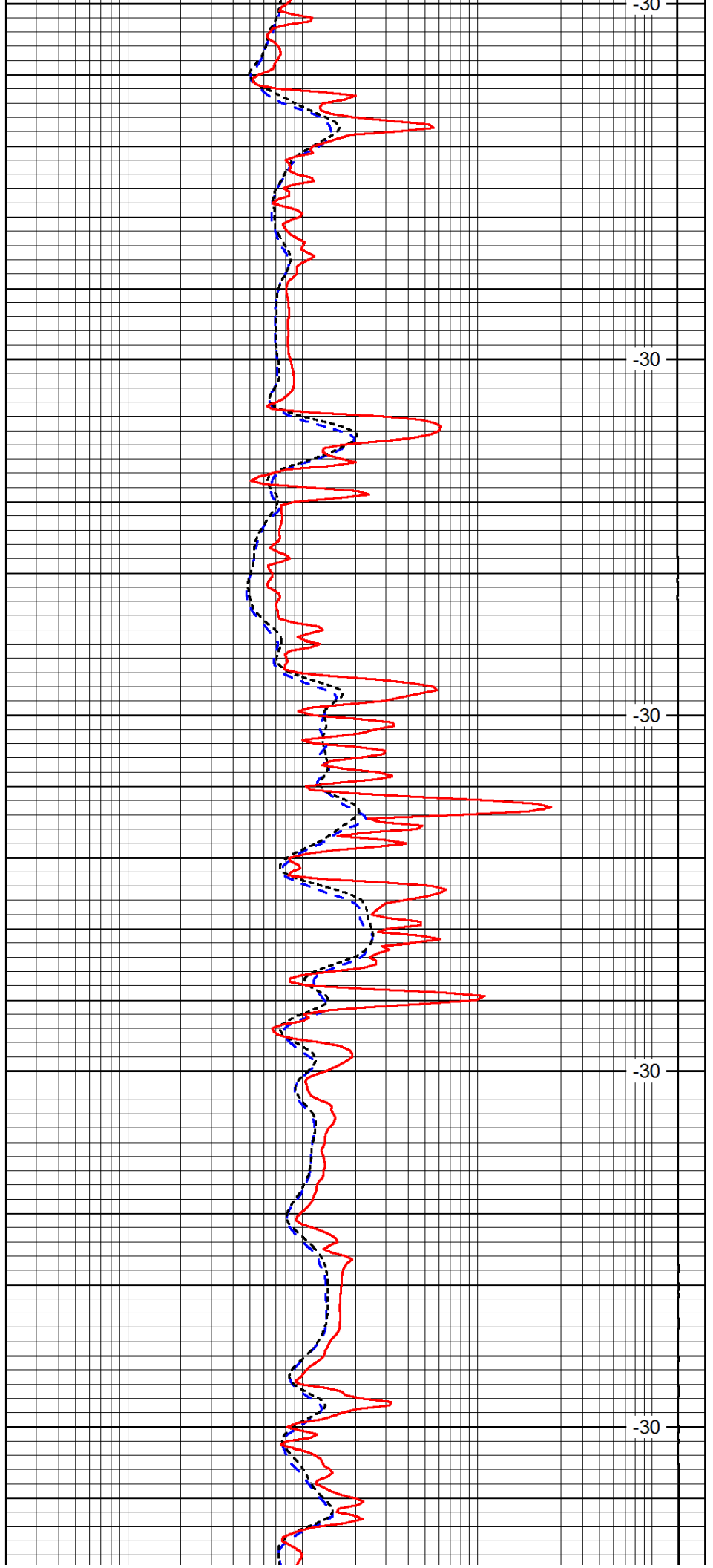
-30

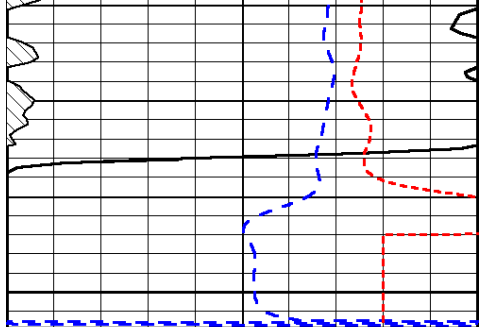
-30

-30

-30

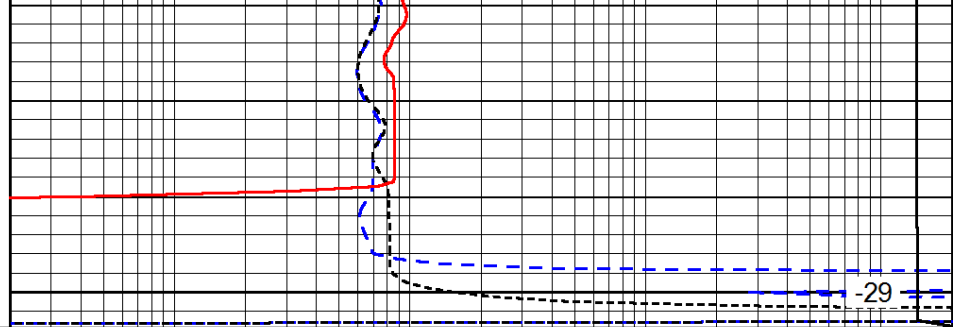
-30





0	Gamma Ray	150
-200	SP (mV)	0
-160	RxoRt	40

2450



0.2	Deep Resistivity	2000
0.2	Medium Resistivity	2000
0.2	Shallow Resistivity	2000
15000	Line Tension	0

LSPD