



Pioneer Energy Services

Dual Compensated Porosity Log

15-015-24,001-00-00

API No.	15-015-24,001-00-00		
Company	Vess Oil Corporation		
Well	Wilson A #449		
Field	El Dorado		
County	Butler		
Location	NE SE NW NW 950' FNL & 1265' FWL		
Sec: 9	Twp: 25S	Rge: 5E	Elevation 1363
Log Measured From	Kelly Bushing	6 Ft. Above Perm. Datum	K.B. 1369
Drilling Measured From	Kelly Bushing		D.F. 1363
			G.L. 1363
			Other Services DIL MEL

Date	11/3/2013		
Run Number	Two		
Type Log	CNL / CDL		
Depth Driller	2443		
Depth Logger	2443		
Bottom Logged Interval	2441		
Top Logged Interval	250		
Type Fluid In Hole	Chemical		
Salinity, PPM CL	900		
Density	9.3		
Level	Full		
Max. Rec. Temp. F	100		
Operating Rig Time	5 Hours		
Equipment -- Location	15 Hays		
Recorded By	D Kerr		
Witnessed By	Roger Martin		
Borehole Record			
Run No.	Bit	From	To
1	12.25	00	253
2	7.8785	253	2443
Casing Record			
	Size	Wgt.	To
	8.625	24#	253

<<< Fold Here >>>

All interpretations are opinions based on inferences from electrical or other measurements and we cannot and do not guarantee the accuracy or correctness of any interpretation, and we shall not, except in the case of gross or willful negligence on our part, be liable or responsible for any loss, costs, damages, or expenses incurred or sustained by anyone resulting from any interpretation made by any of our officers, agents or employees. These interpretations are also subject to our general terms and conditions set out in our current Price Schedule.

Comments

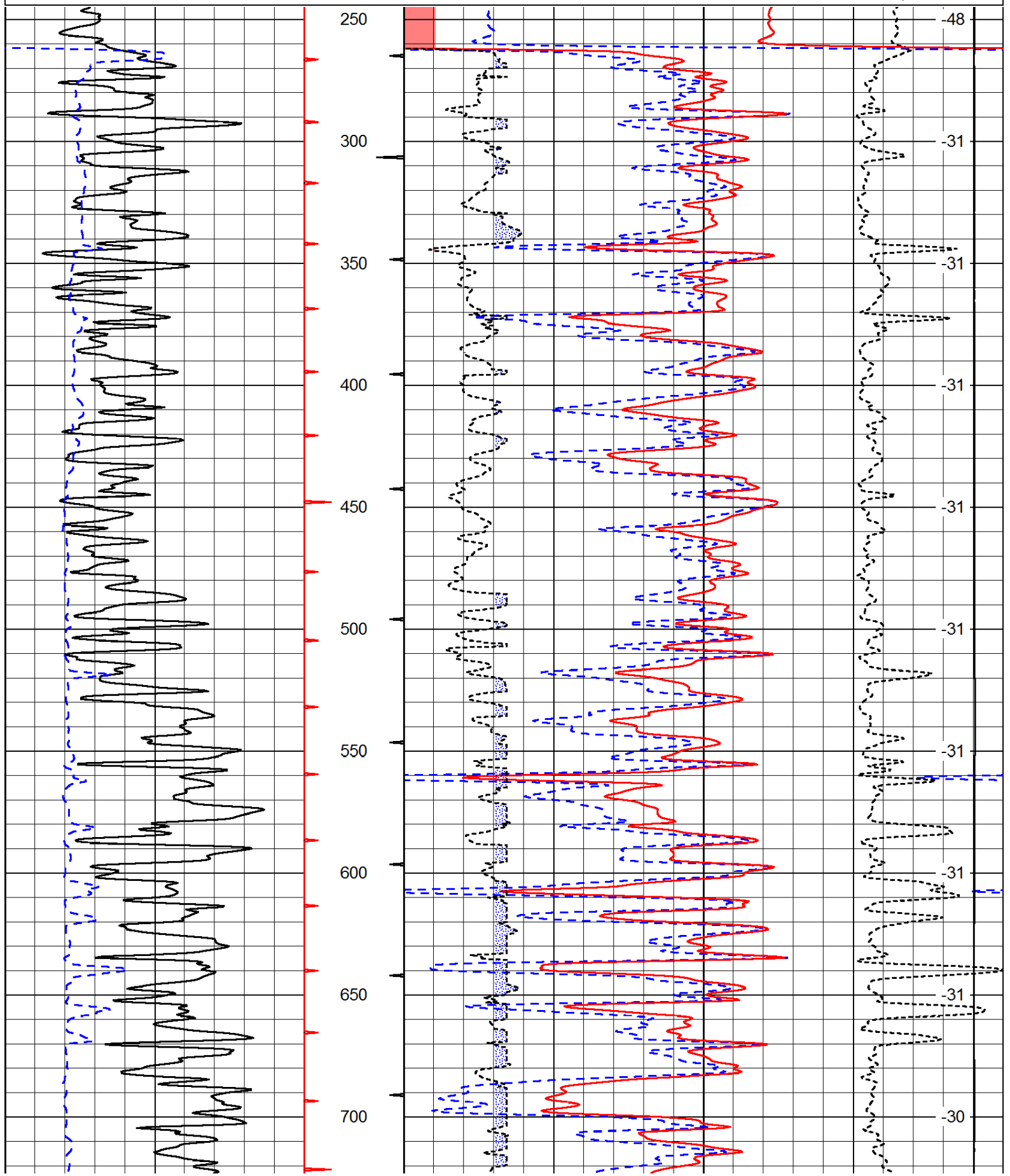
Thank you for using Pioneer Energy Services
www.pioneerenergy.com
 785 625 3858

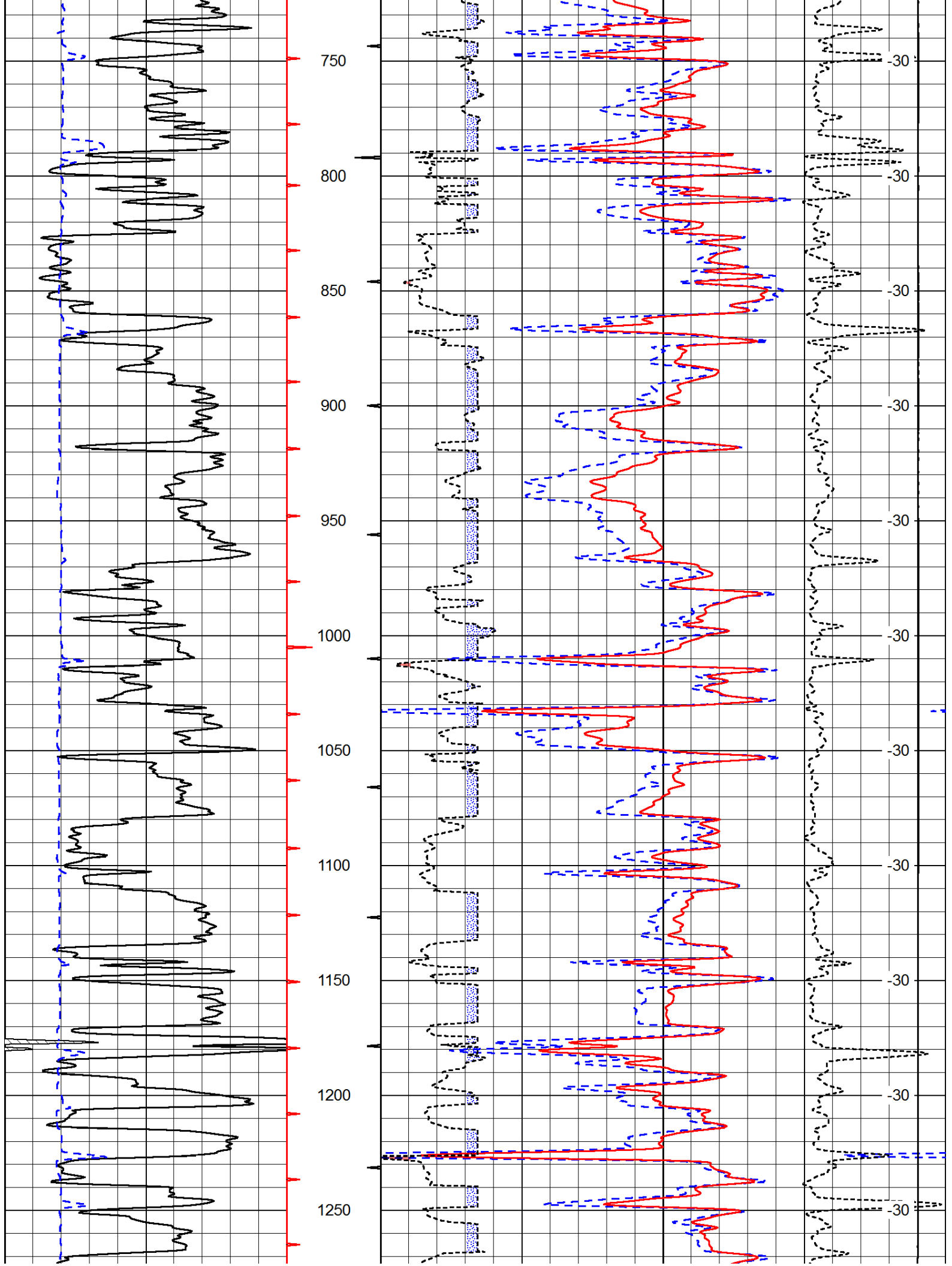
Potwin KS, East and South to 40RD,
 2 East, 1/2 North at Cattle Guard, East Into

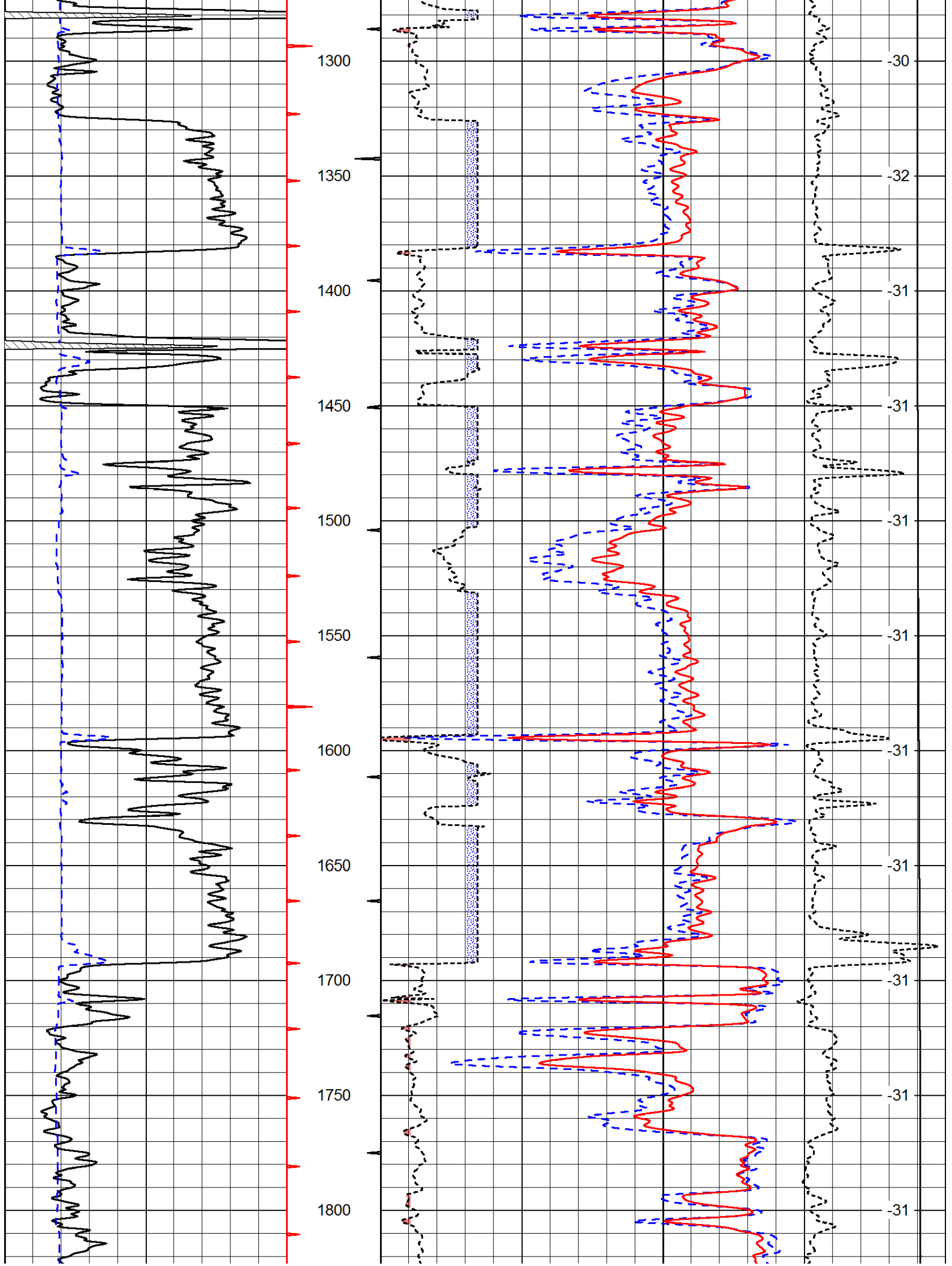
Database File: c:\warrior\data\vess_wilson a #449\vess_wilson_a_449hd.db
 Dataset Pathname: DIL\vessstk
 Presentation Format: cdl
 Dataset Creation: Sun Nov 03 04:48:18 2013
 Charted by: Depth in Feet scaled 1:600

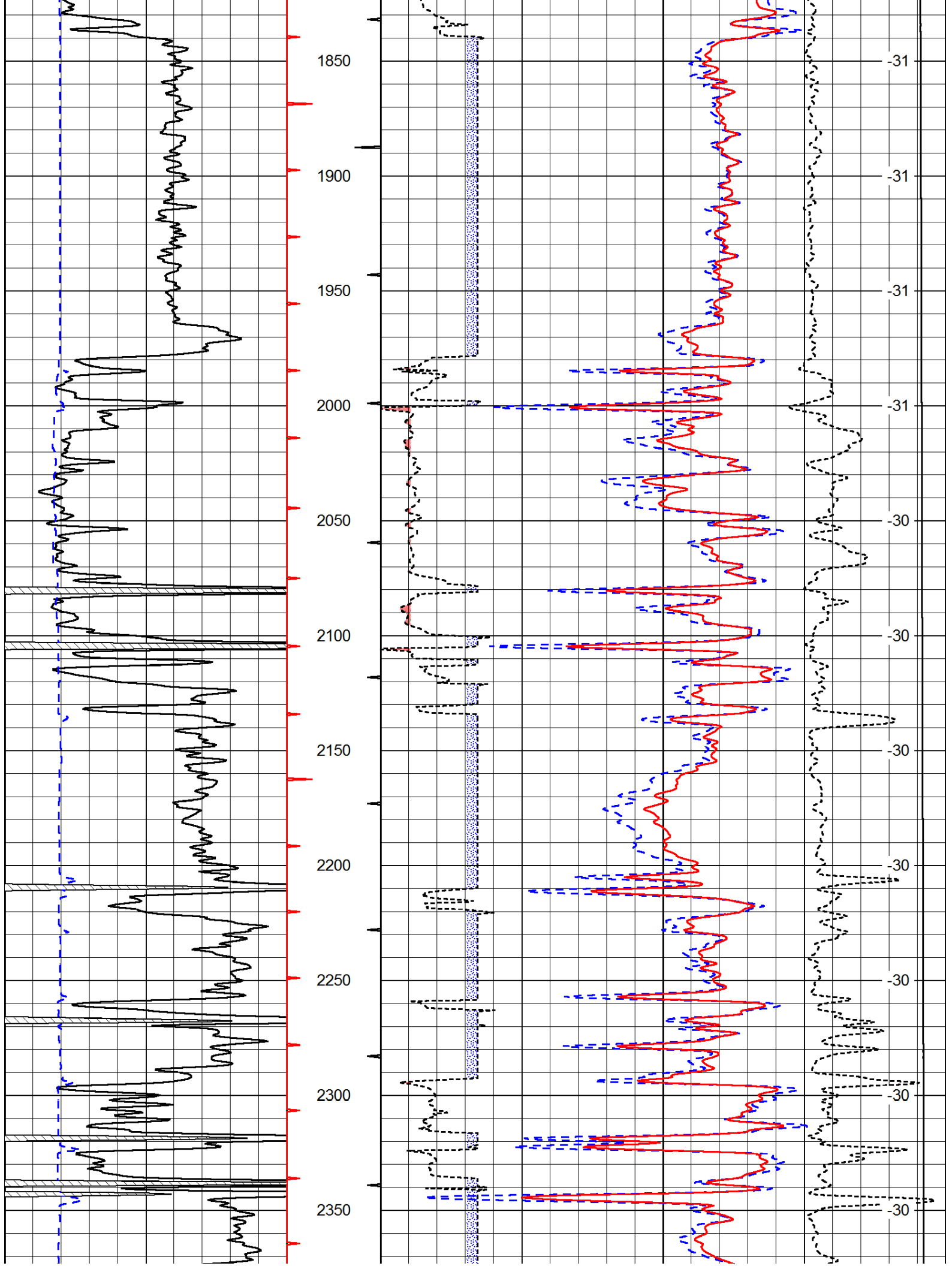
0	Gamma Ray	150
6	Caliper (GAPI)	16

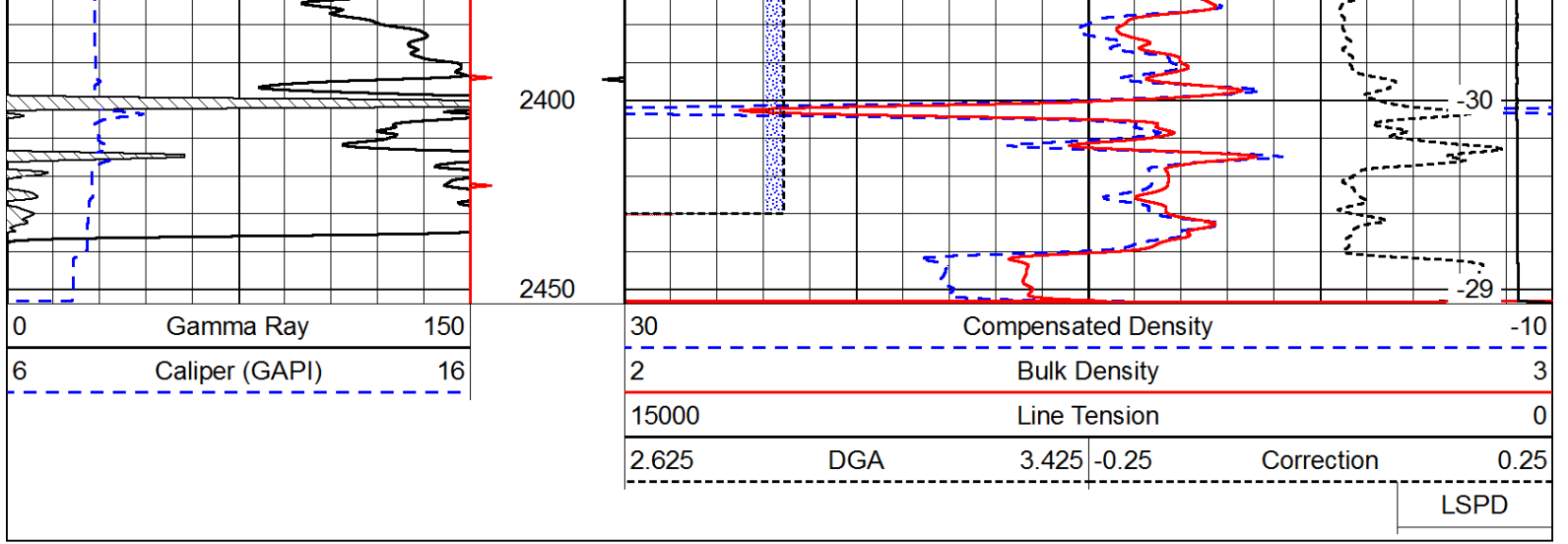
30	Compensated Density		-10
2	Bulk Density		3
15000	Line Tension		0
2.625	DGA	3.425	-0.25
Correction			0.25
LSPD			



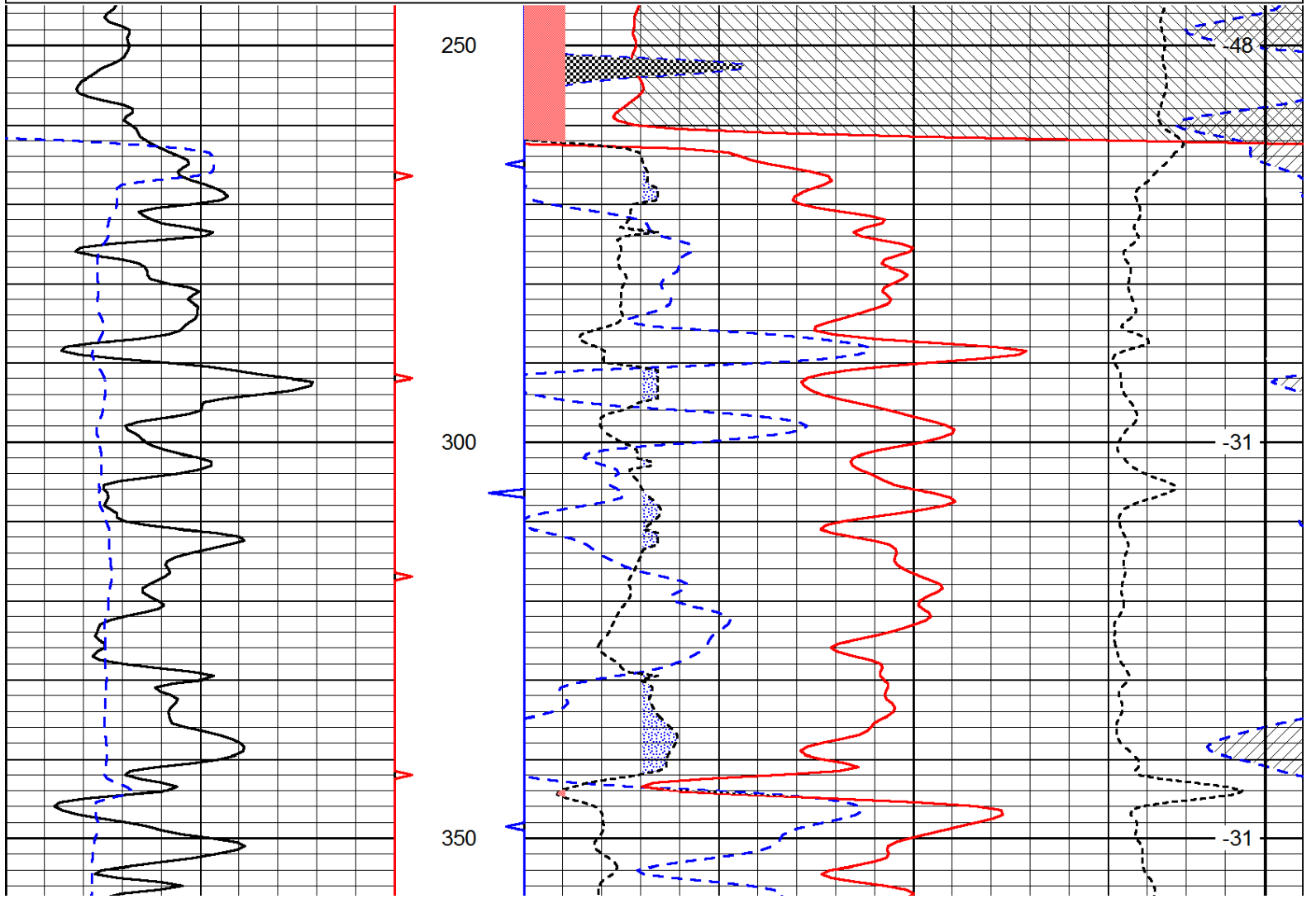
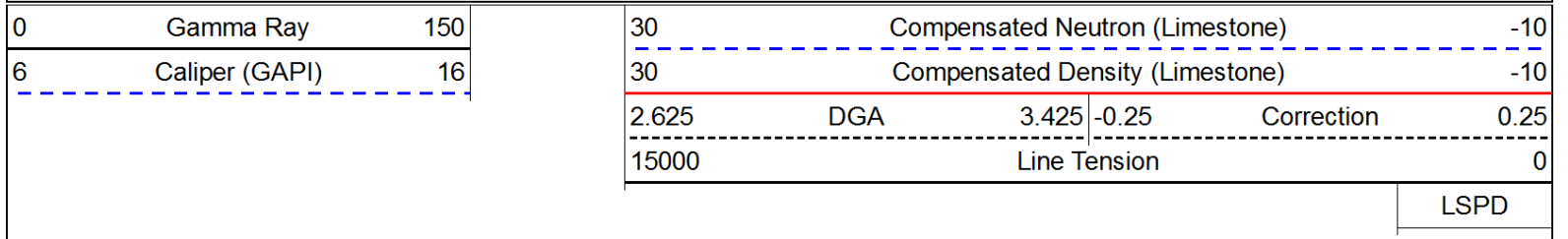


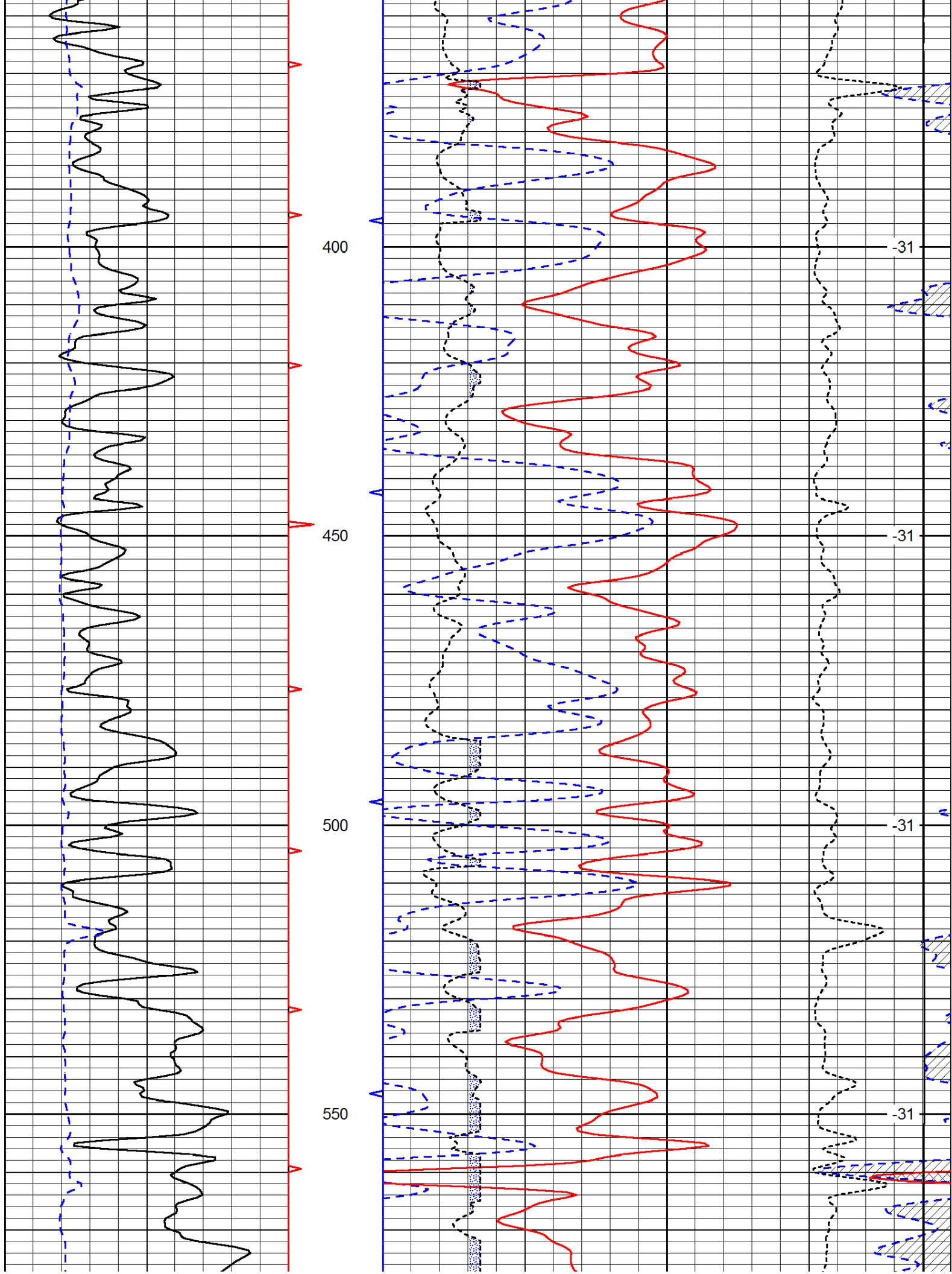


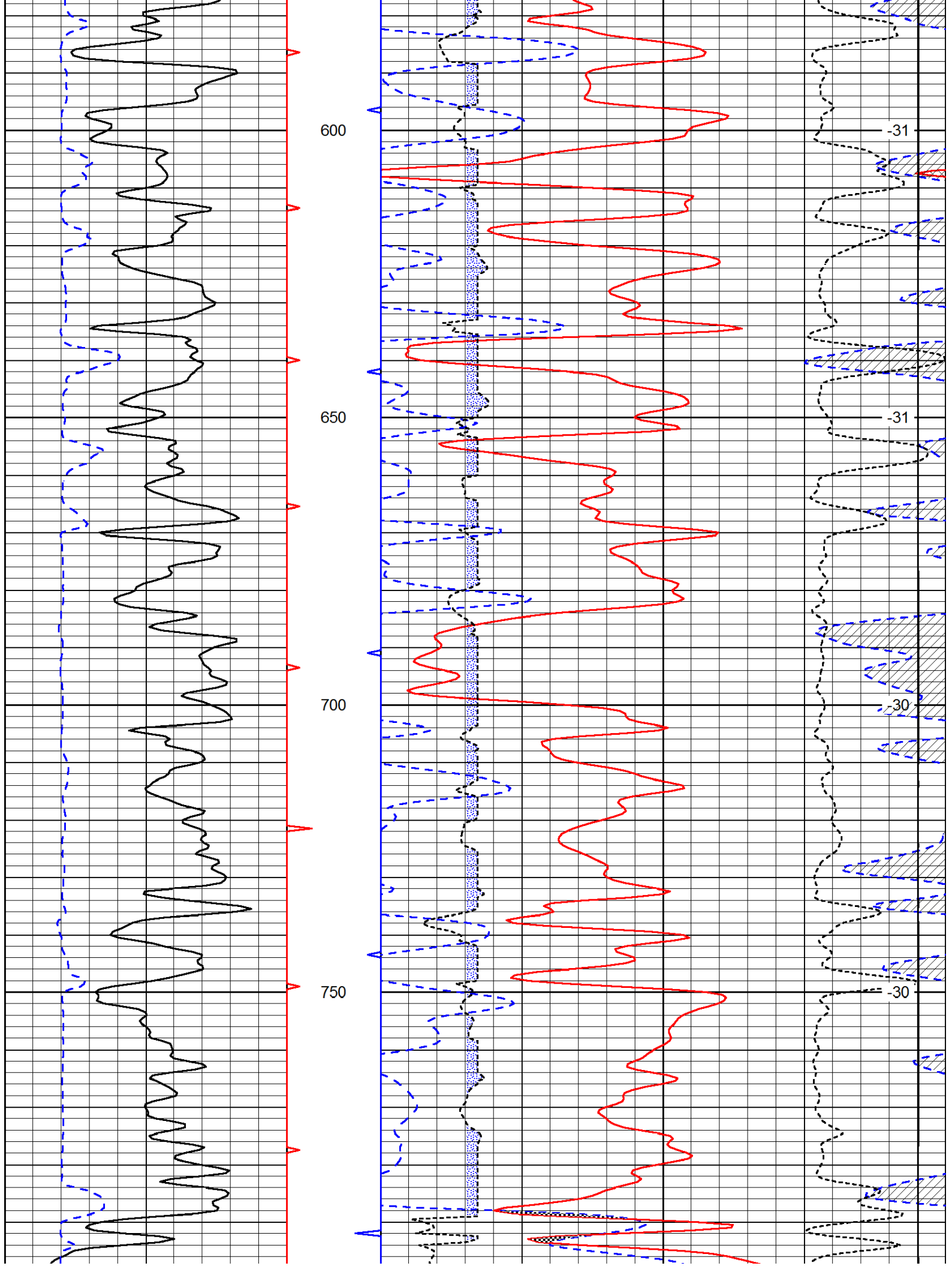


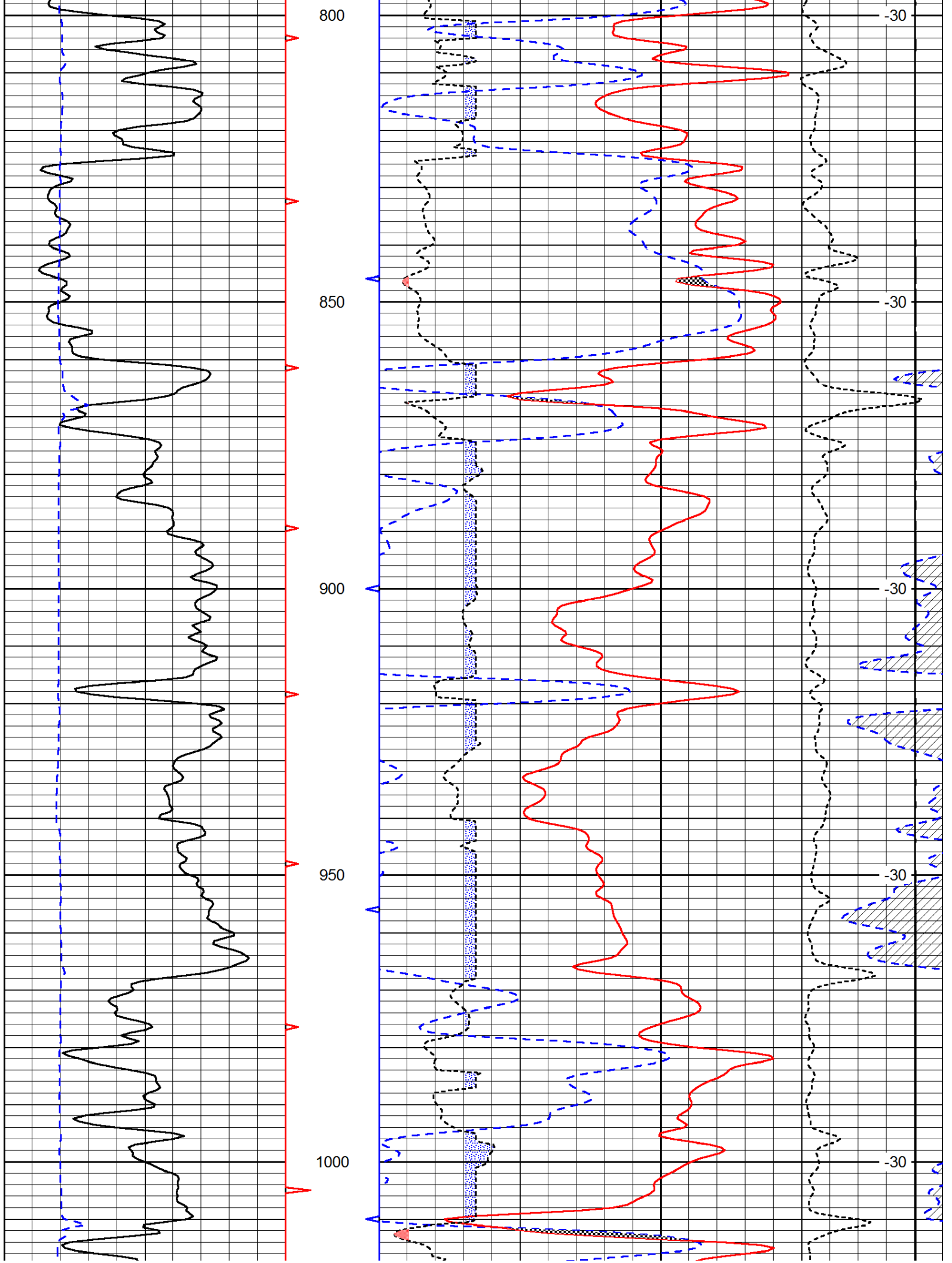


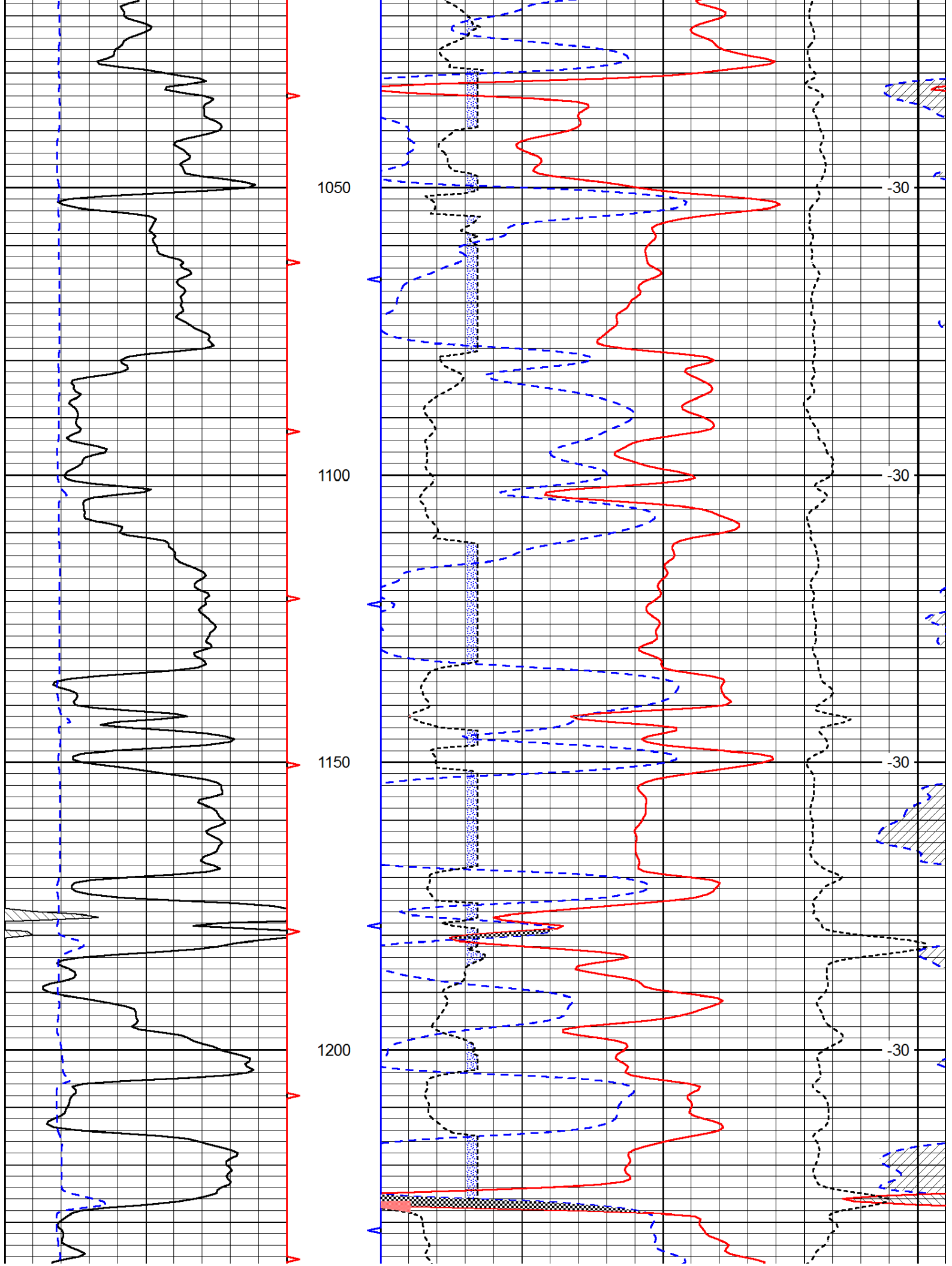
Database File: c:\warrior\data\ vess_wilson a #449\ vess_wilson_a_449hd.db
 Dataset Pathname: DIL/vessstk
 Presentation Format: cndlspec
 Dataset Creation: Sun Nov 03 04:48:18 2013
 Charted by: Depth in Feet scaled 1:240

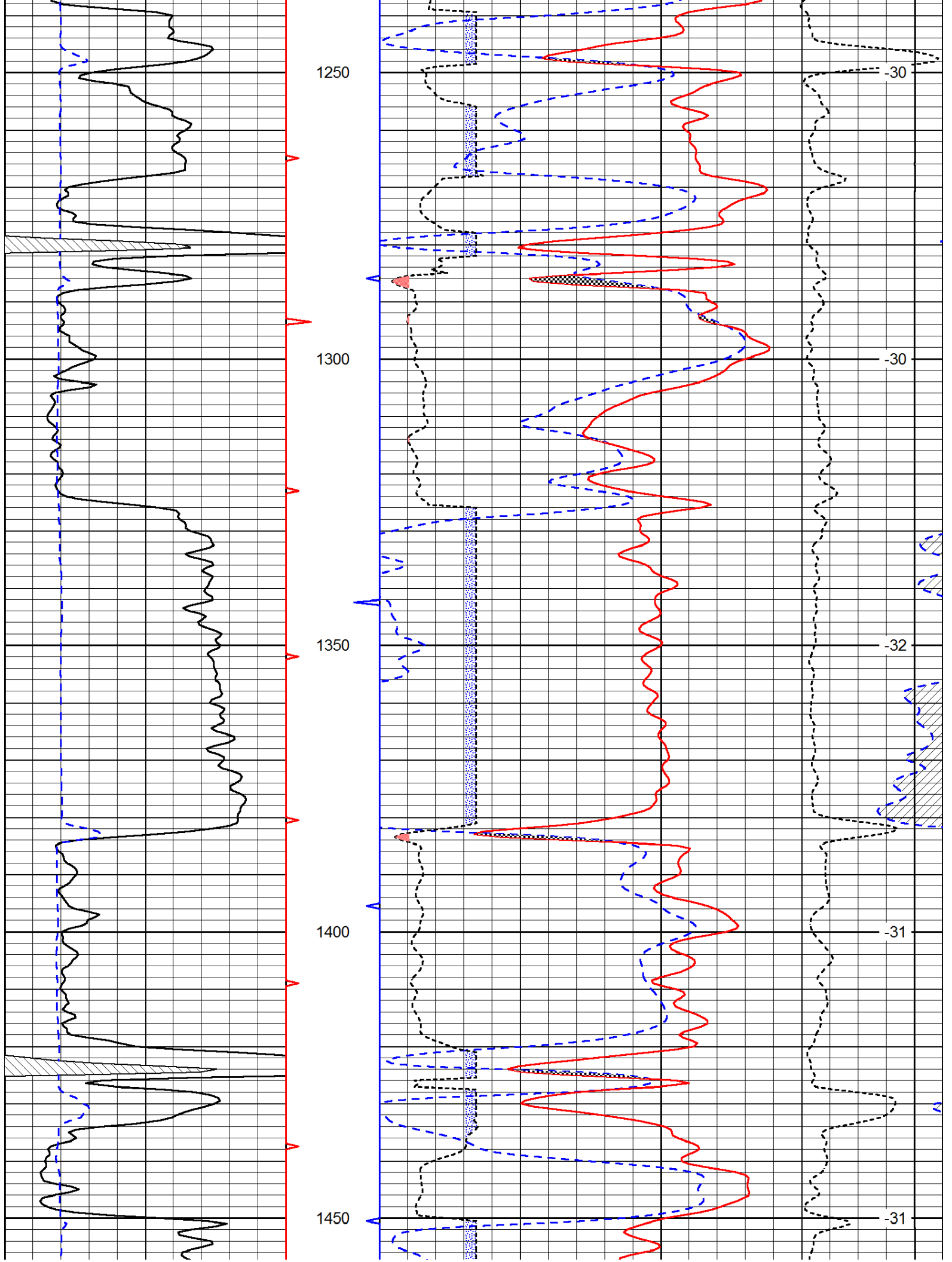


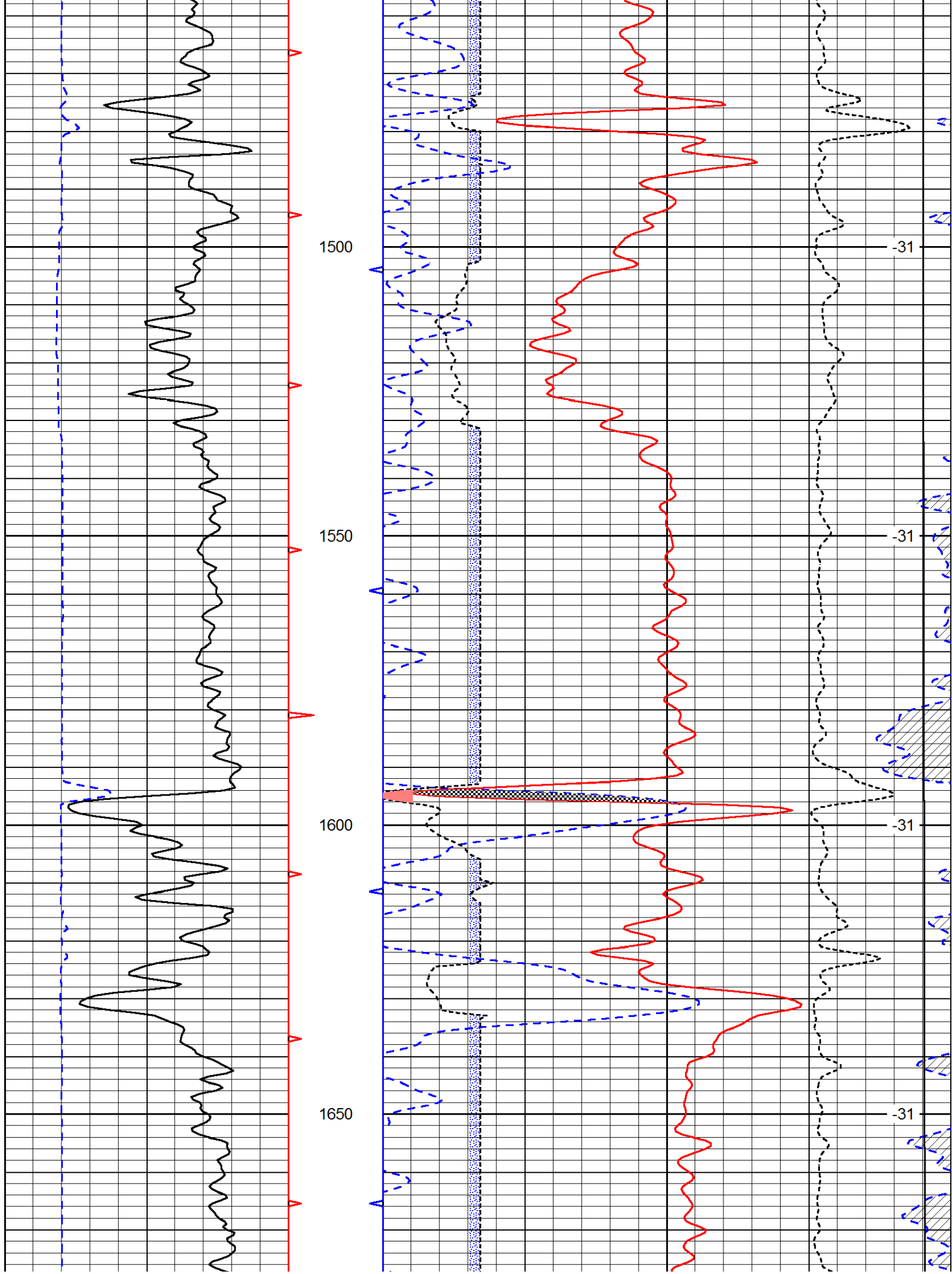


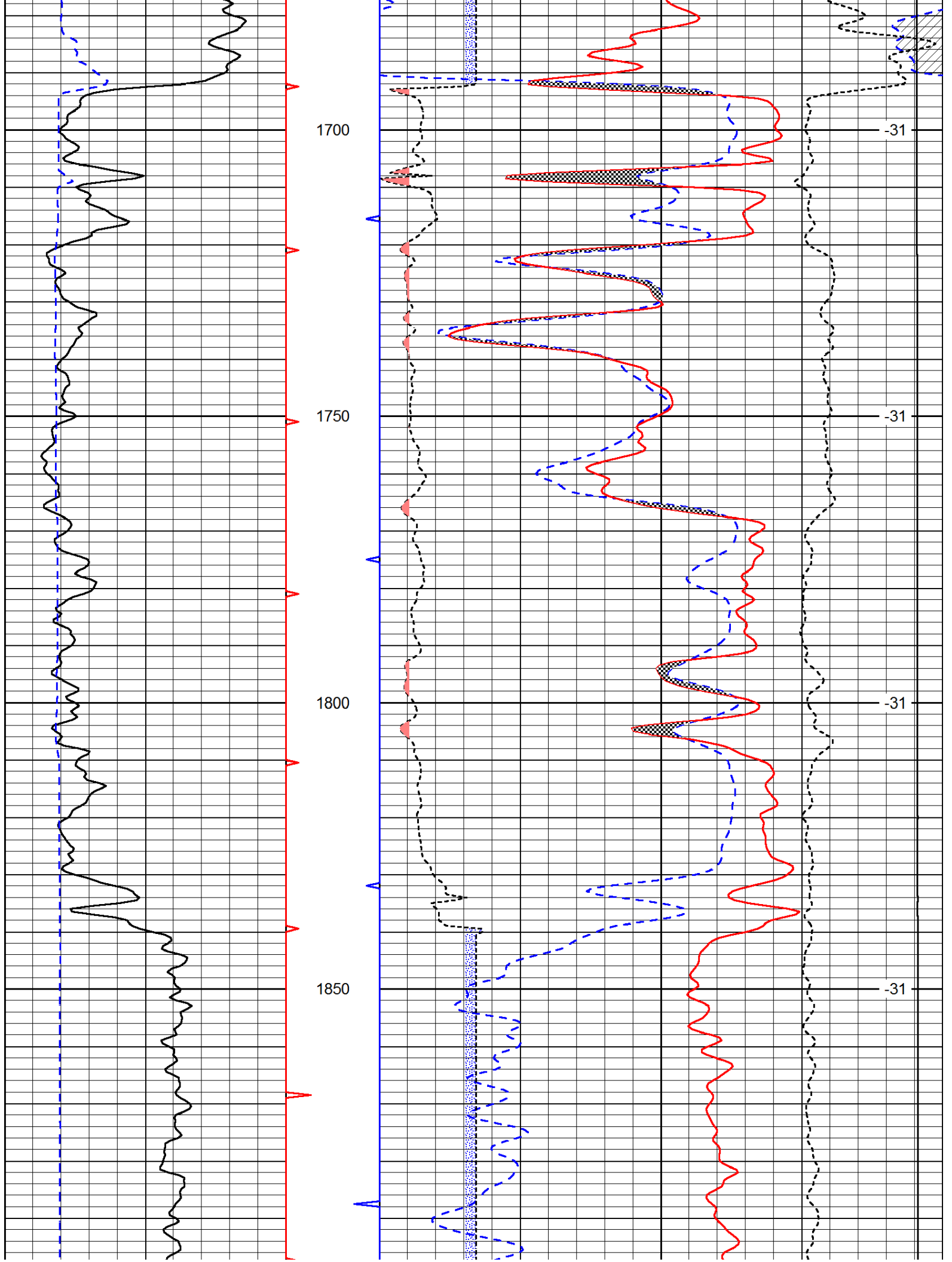


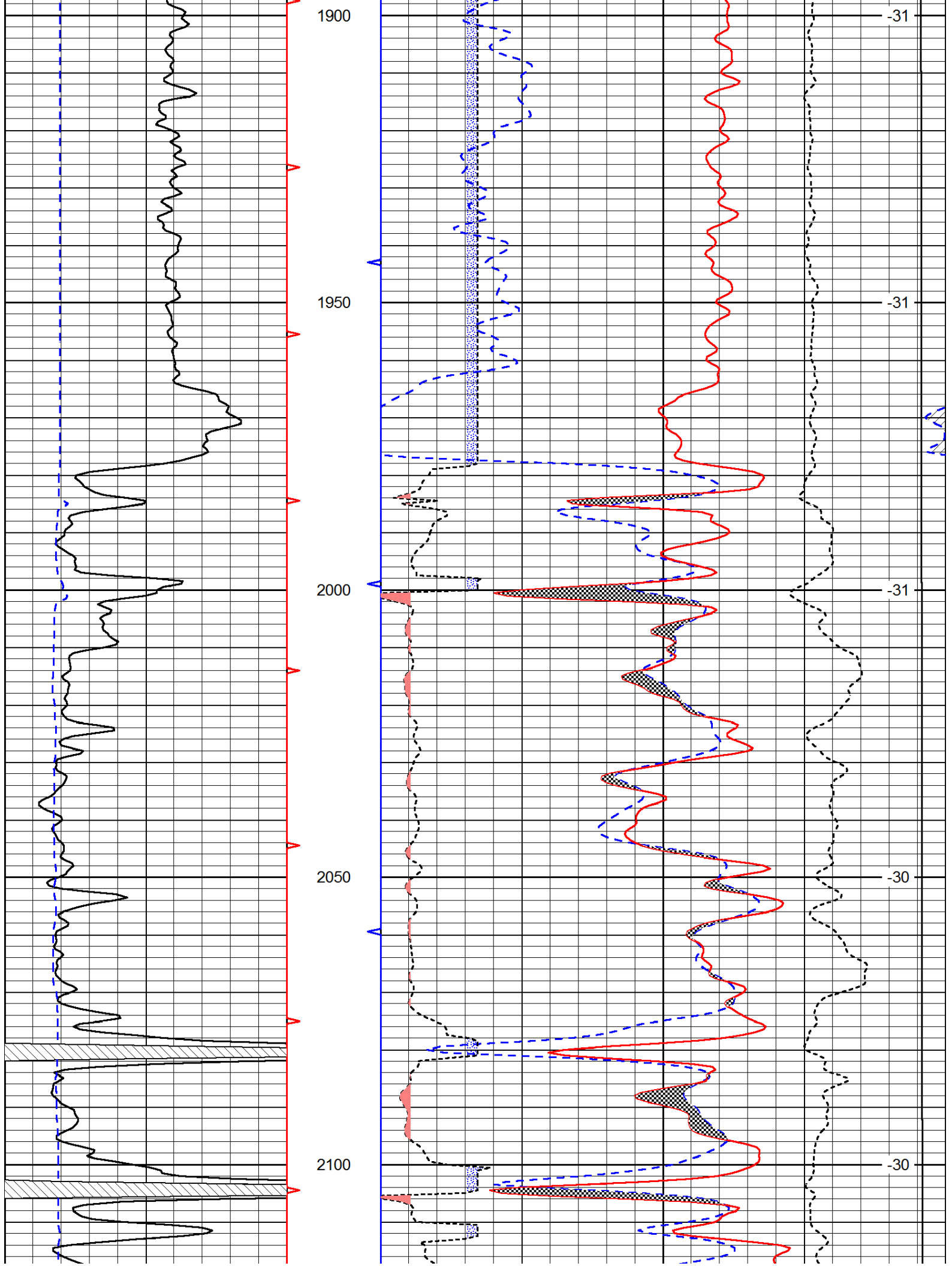


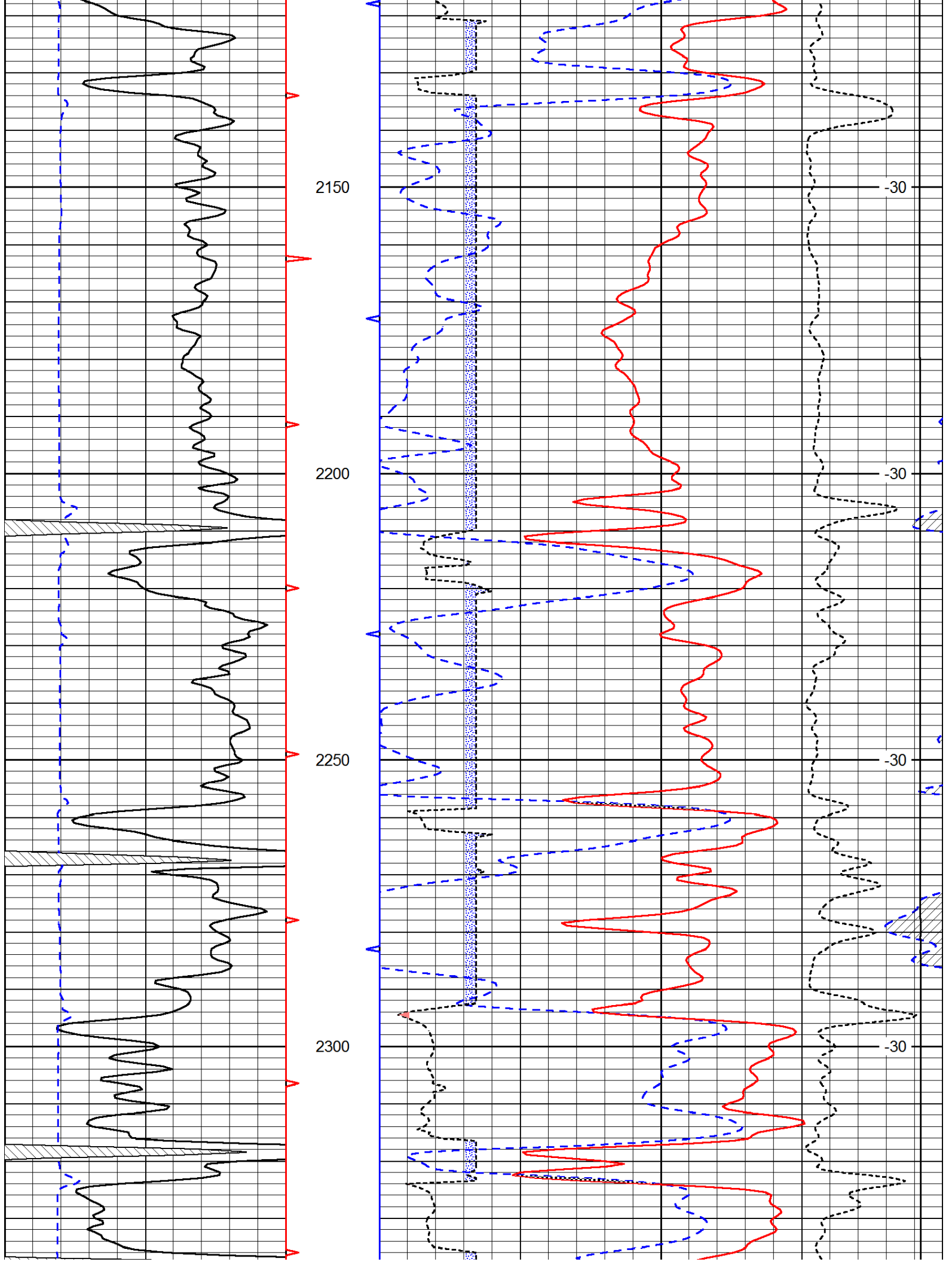


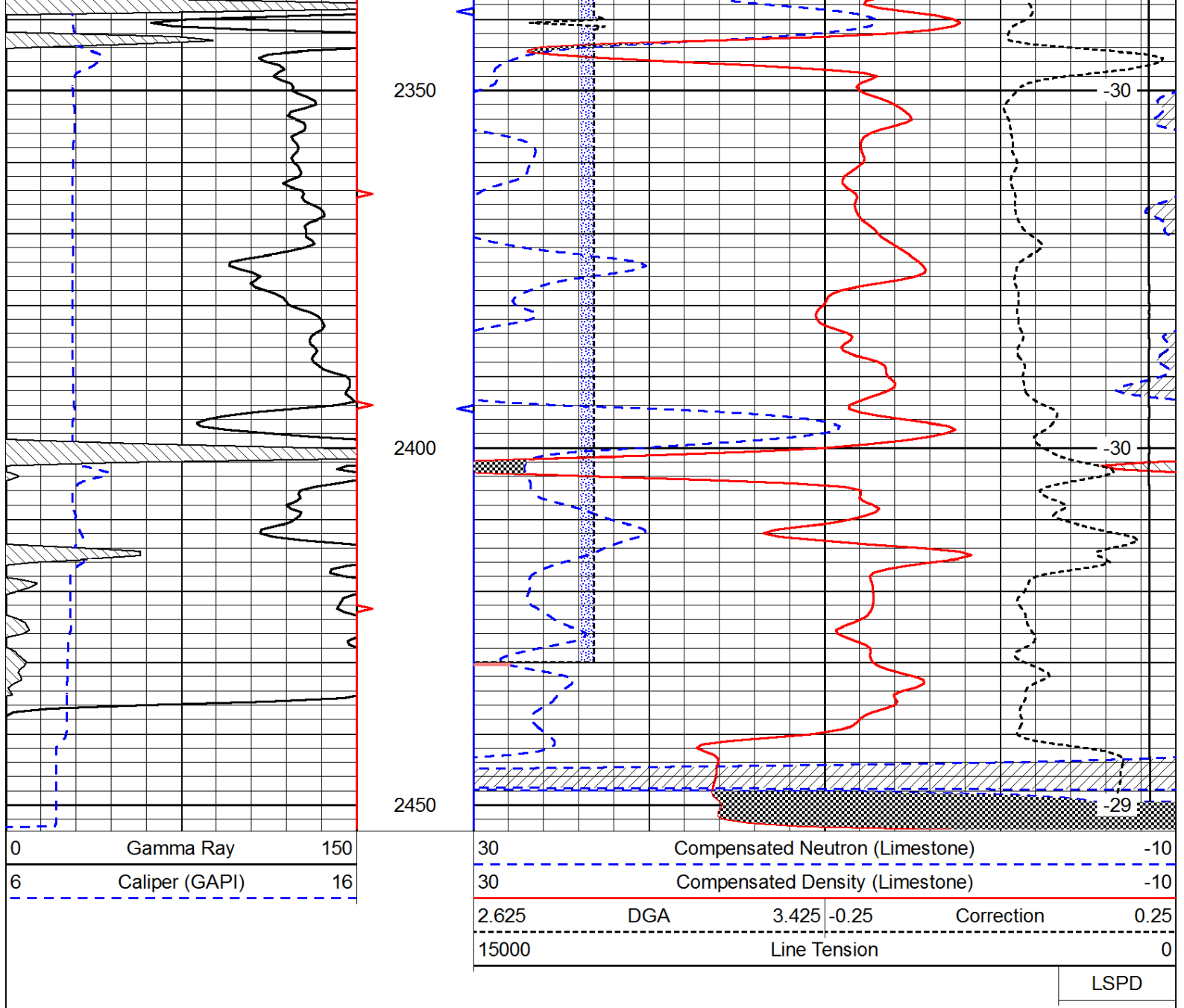












LSPD