



Green Country Wireline

GAMMA RAY  
CEMENT BOND LOG  
CCLVLDL

Company EXCEL OIL & GAS  
Well WINDERS # 15-7  
Field PERU-SEDAN  
County CHAUTAUQUA  
State KANSAS

Company EXCEL OIL & GAS  
Well WINDERS # 15-7  
Field PERU-SEDAN  
County CHAUTAUQUA State KANSAS

Location: API #: 15-019-27084

Other Services

SEC 15 TWP 34S RGE 12E  
NW/NE SE NW  
3885' FSL & 3245' FEL

Elevation 775'

Elevation

Permanent Datum  
Log Measured From  
Drilling Measured From

K.B.  
D.F.  
G.L. 775'

Date	11-1-11				
Run Number	1				
Depth Driller	1040'				
Depth Logger	1030'				
Bottom Logged Interval	1024'				
Top Log Interval	SURFACE				
Open Hole Size	---				
Type Fluid	WATER				
Density / Viscosity	---				
Max. Recorded Temp.	---				
Estimated Cement Top	SURFACE				
Time Well Ready	---				
Time Logger on Bottom	---				
Equipment Number	3				
Location	DEWEY				
Recorded By	HERREN				
Witnessed By	MR JONES				
Run Number	Bit	From	To	Size	Weight
Borehole Record		Tubing Record		From	To
Casing Record	Size	Wgt/Ft	Top	Bottom	
Surface String	8.625"		SURFACE	52'	
Prot. String					
Production String	4.5"		SURFACE		TD
Liner					

<<< Fold Here >>>

All interpretations are opinions based on inferences from electrical or other measurements and we cannot and do not guarantee the accuracy or correctness of any interpretation, and we shall not, except in the case of gross or willful negligence on our part, be liable or responsible for any loss, costs, damages, or expenses incurred or sustained by anyone resulting from any interpretation made by any of our officers, agents or employees. These interpretations are also subject to our general terms and conditions set out in our current Price Schedule.

Comments

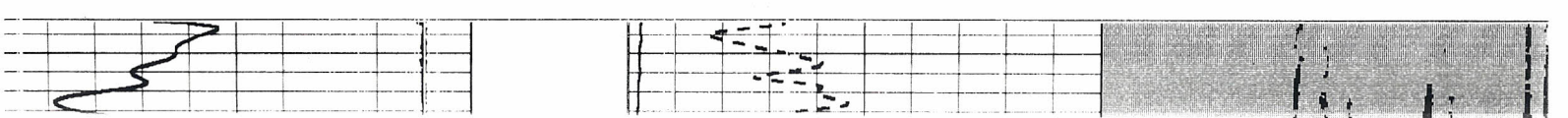


Green Country Wireline

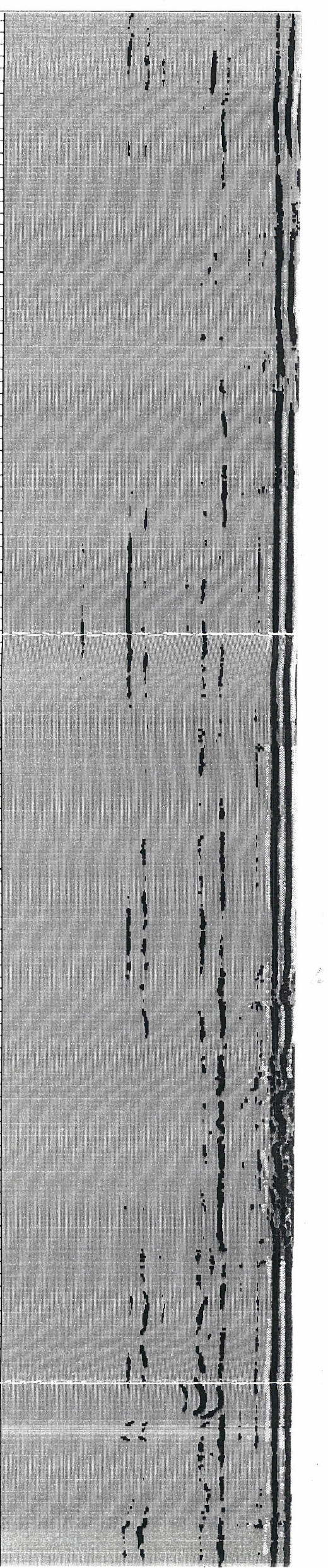
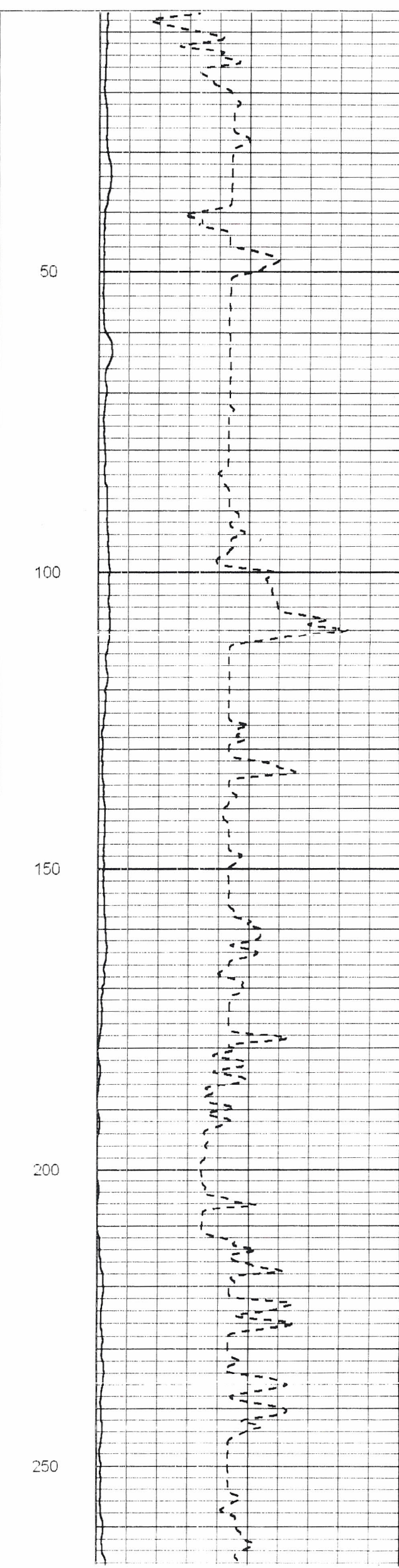
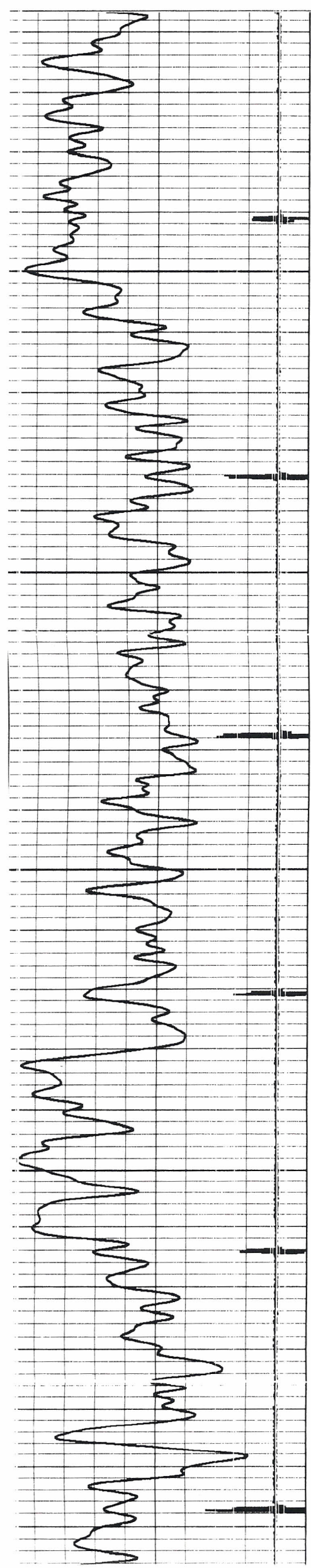
GAMMA RAY CEMENT BOND

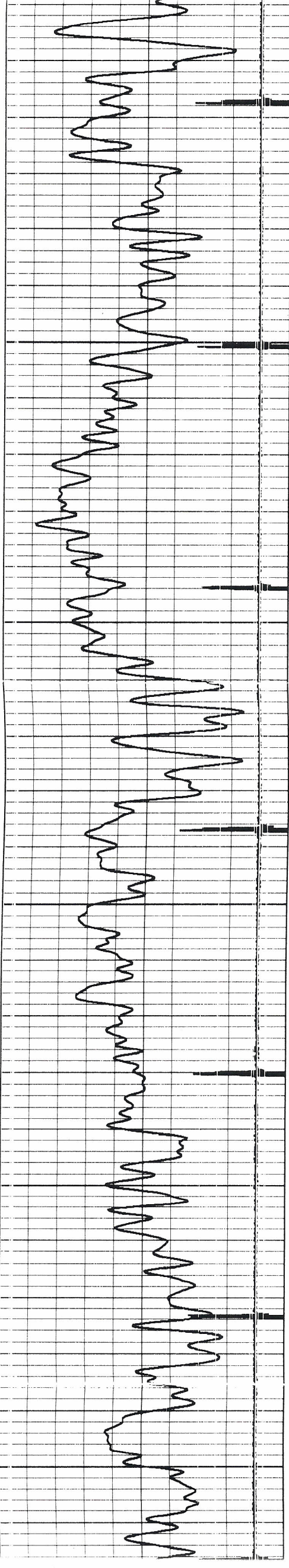
Database File: winders.db  
Dataset Pathname: winders/rur 1/pass1  
Presentation Format: cbl\_dr  
Dataset Creation: Tue Nov 01 07:04:32 2011 by Log Std Casedhole 09061  
Charted by: Depth in Feet scaled 1:240

9	Collar Locator	-1	-1	Amplitude (mV)	90	200	Variable Density	120
0	Gamma Ray (GAPI) (GAPI)	60	1000	Travel Time (usec)	250			

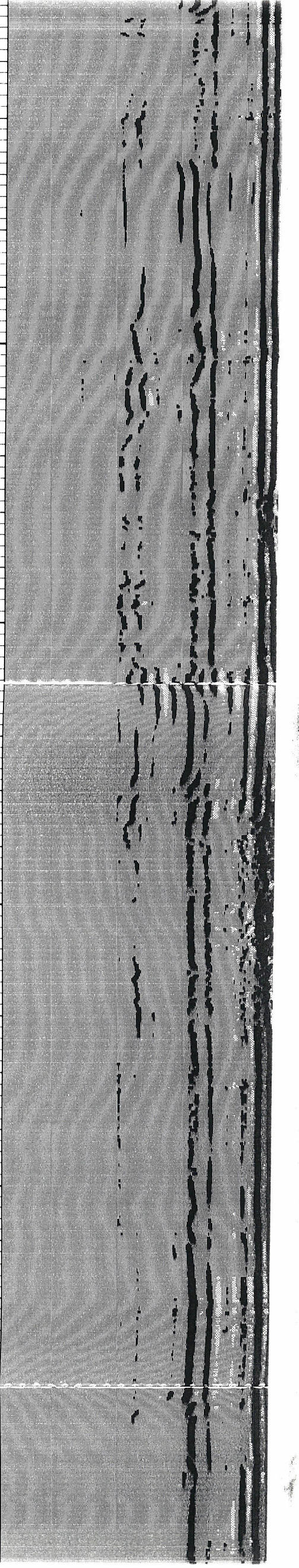
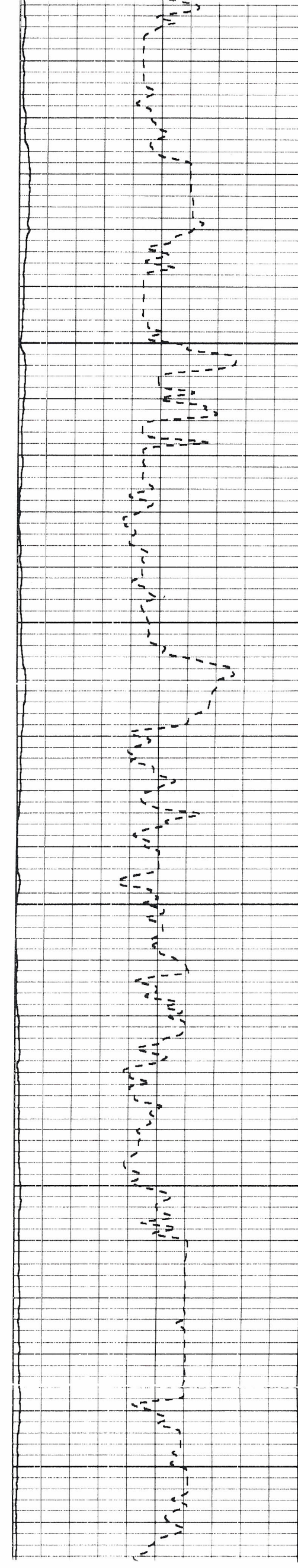


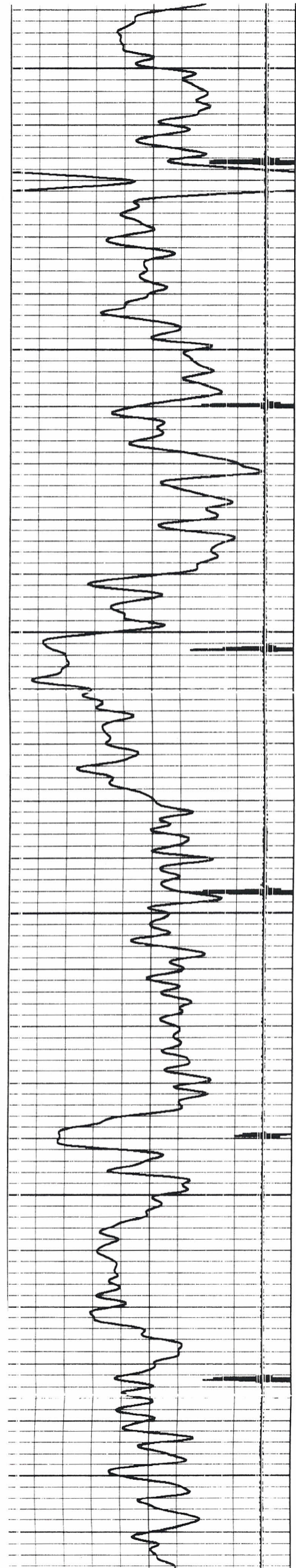
9	Collar Locator	-1	-1	Amplitude (mV)	90	200	Variable Density	1200
0	Gamma Ray (GAPI) (GAPI)	60	1000	Travel Time (usec)	250			





250  
300  
350  
400  
450  
500





500

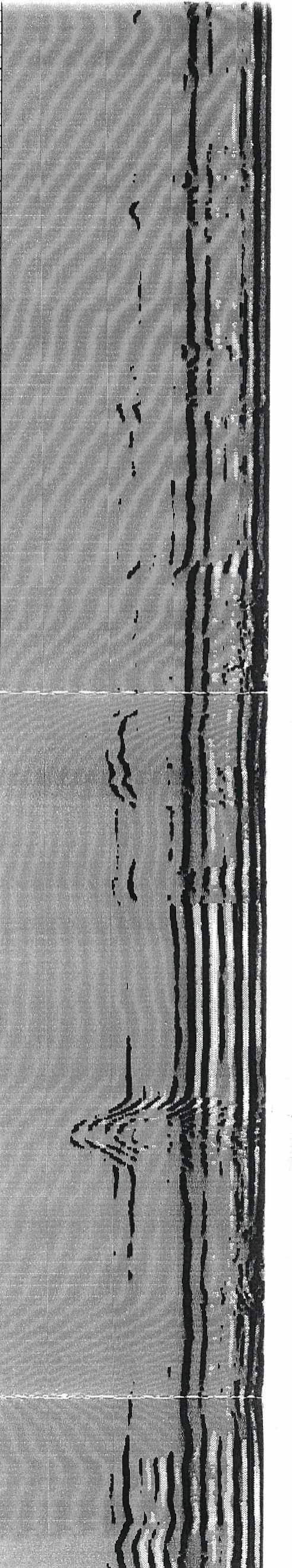
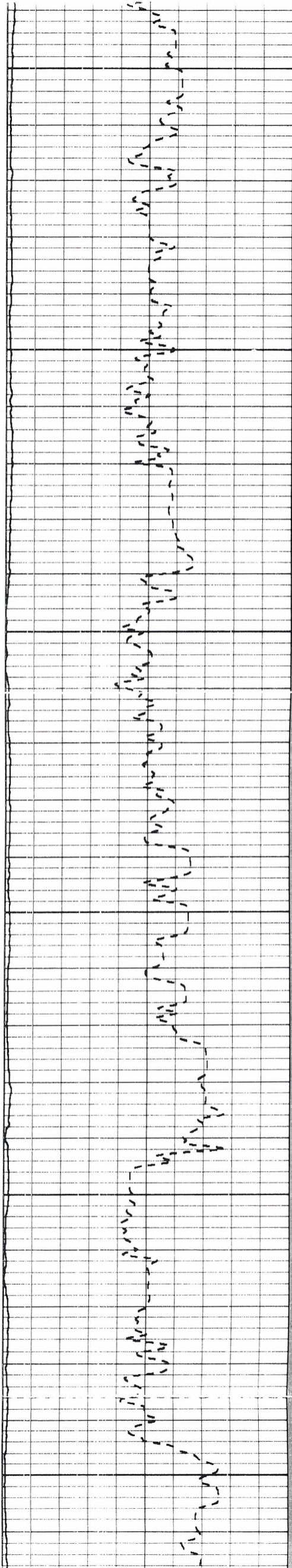
550

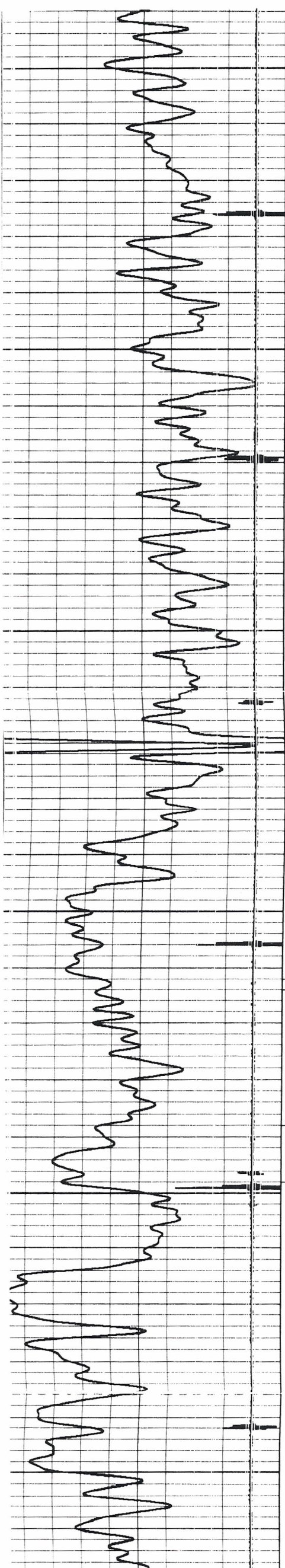
600

650

700

750





750  
800  
850  
900  
912'-914'  
938'-948'  
950  
23 shots  
11-1-11  
1000

