



MIDWEST SURVEYS
 LOGGING - PERFORATING - CONSULTING SERVICES
 P.O. Box 68, Osawatomie, KS 66064
 913 / 755 - 2128

GAMMA RAY / NEUTRON / CCL

API # 15-107-24,405

File No.

Company **Bobcat Oilfield Services, Inc.**

Well **North Baker No. G-7**

Field **Cadmus / LaCygne**

County **Linn** State **Kansas**

Location **1650' FSL & 3300' FEL
S/2-NE-SW**

Sec. **5** Twp. **20S** Rge. **23E**

Permanent Datum **GL** Elevation **NA**

Log Measured From **GL**

Drilling Measured From **GL**

Other Services
Perforate

Elevation
K.B. NA
D.F. NA
G.L. NA

Date **09-16-2011**

Run Number **One**

Depth Driller **300.0**

Depth Logger **292.2**

Bottom Logged Interval **290.2**

Top Log Interval **20.0**

Fluid Level **Full**

Type Fluid **Water**

Density / Viscosity **NA**

Salinity - PPM Cl **NA**

Max Recorded Temp **NA**

Estimated Cement Top **0.0**

Equipment No. **104** Location **Osawatomie**

Recorded By **Gary Wandsch**

Witnessed By **Bob Eberhart**

| BORE-HOLE RECORD | | | | CASING RECORD | | | |
|------------------|--------|------|-------|---------------|------|------|-------|
| RUN No. | BIT | FROM | TO | SIZE | WGT. | FROM | TO |
| One | 8.75" | 0.0 | 20.0 | 6.00" | 0.0 | 0.0 | 20.0 |
| Two | 5.625" | 20.0 | 300.0 | 2.875" | 0.0 | 0.0 | 292.0 |

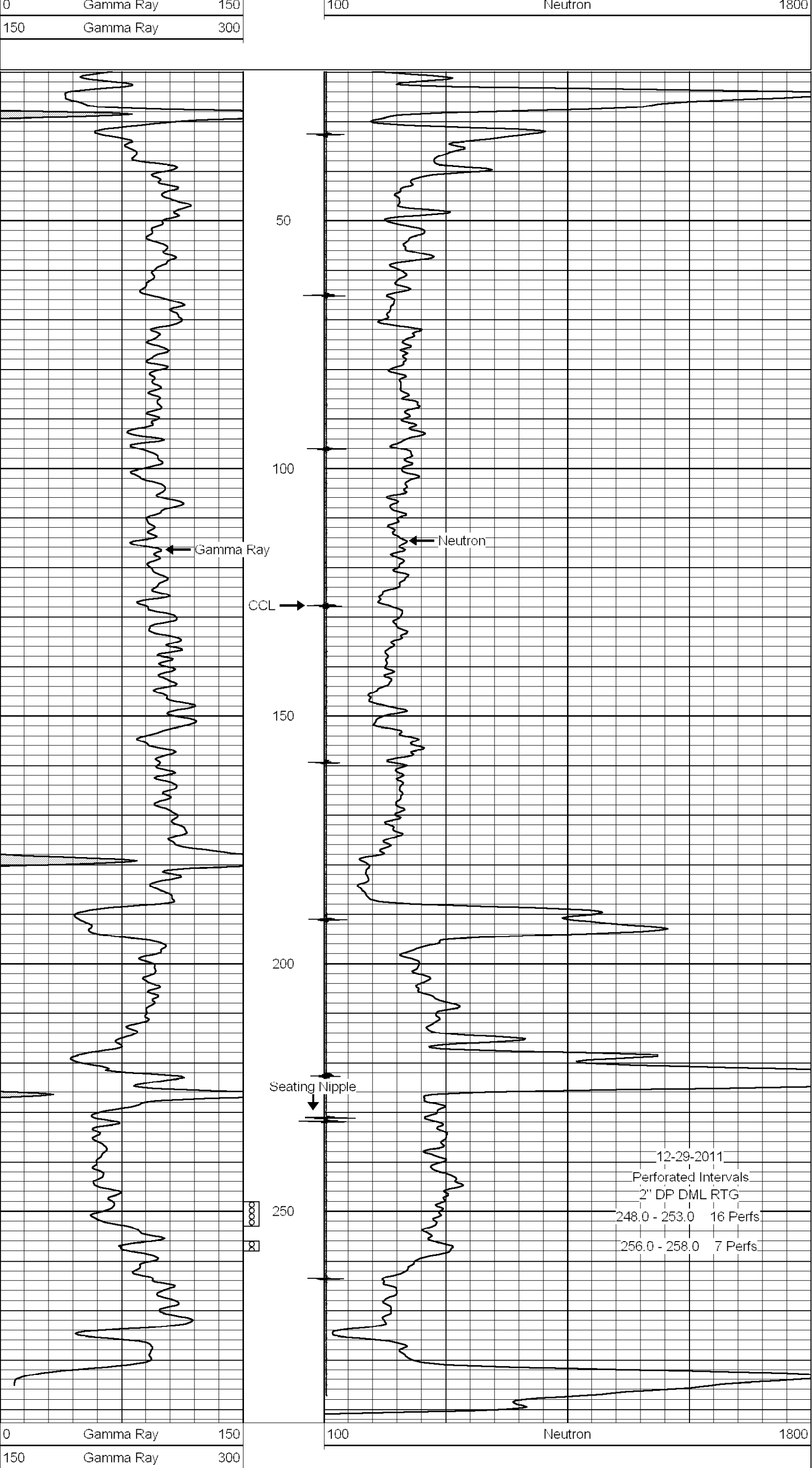
<<< Fold Here >>>

All interpretations are opinions based on inferences from electrical or other measurements and we cannot and do not guarantee the accuracy or correctness of any interpretation, and we shall not, except in the case of gross or willful negligence on our part, be liable or responsible for any loss, costs, damages, or expenses incurred or sustained by anyone resulting from any interpretation made by any of our officers, agents or employees. These interpretations are also subject to our general terms and conditions set out in our current Price Schedule.

Comments

Drilling Contractor :
Dale Jackson Production Company

Database File: bakr7gn.db
 Dataset Pathname: pass1
 Presentation Format: gr-n-ccl
 Dataset Creation: Tue Aug 16 13:47:11 2011 by Log Warrior Version 6.6
 Charted by: Depth in Feet scaled 1:240



| BORE-HOLE RECORD | | | | CASING RECORD | | | |
|------------------|--------|------|-------|---------------|------|------|-------|
| RUN No. | BIT | FROM | TO | SIZE | WGT. | FROM | TO |
| One | 8.75" | 0.0 | 20.0 | 6.00" | 0.0 | 0.0 | 20.0 |
| Two | 5.625" | 20.0 | 300.0 | 2.875" | 0.0 | 0.0 | 292.0 |