



MIDWEST SURVEYS
 LOGGING - PERFORATING - CONSULTING SERVICES
 P.O. Box 68, Osawatomie, KS 66064
 913 / 755 - 2128

GAMMA RAY / NEUTRON / CCL

API # 15-107-24,553

File No.

Company Bobcat Oilfield Services, Inc.

Well North Baker No. C-6

Field Cadmus / LaCygne

County Linn State Kansas

Location 2310' FSL & 3630' FEL
 NW-NE

Sec. 5 Twp. 20S Rge. 23E
 Permanent Datum GL Elevation NA
 Log Measured From GL
 Drilling Measured From GL

Date 10-04-2011
 Run Number One
 Depth Driller 318.0
 Depth Logger 315.0
 Bottom Logged Interval 314.0
 Top Log Interval 20.0
 Fluid Level Full

Type Fluid Water
 Density / Viscosity NA
 Salinity - PPM Cl NA
 Max Recorded Temp NA
 Estimated Cement Top 0.0
 Equipment No. Location 104 Osawatomie
 Recorded By Gary Wndirsch
 Witnessed By Bob Eberhart

BORE-HOLE RECORD				CASING RECORD			
Run No.	BIT	FROM	TO	SIZE	WGT.	FROM	TO
One	8.75"	0.0	20.0	6.00"	0.0	0.0	20.0
Two	5.625"	20.0	318.0	2.875"	0.0	0.0	315.0

<<< Fold Here >>>

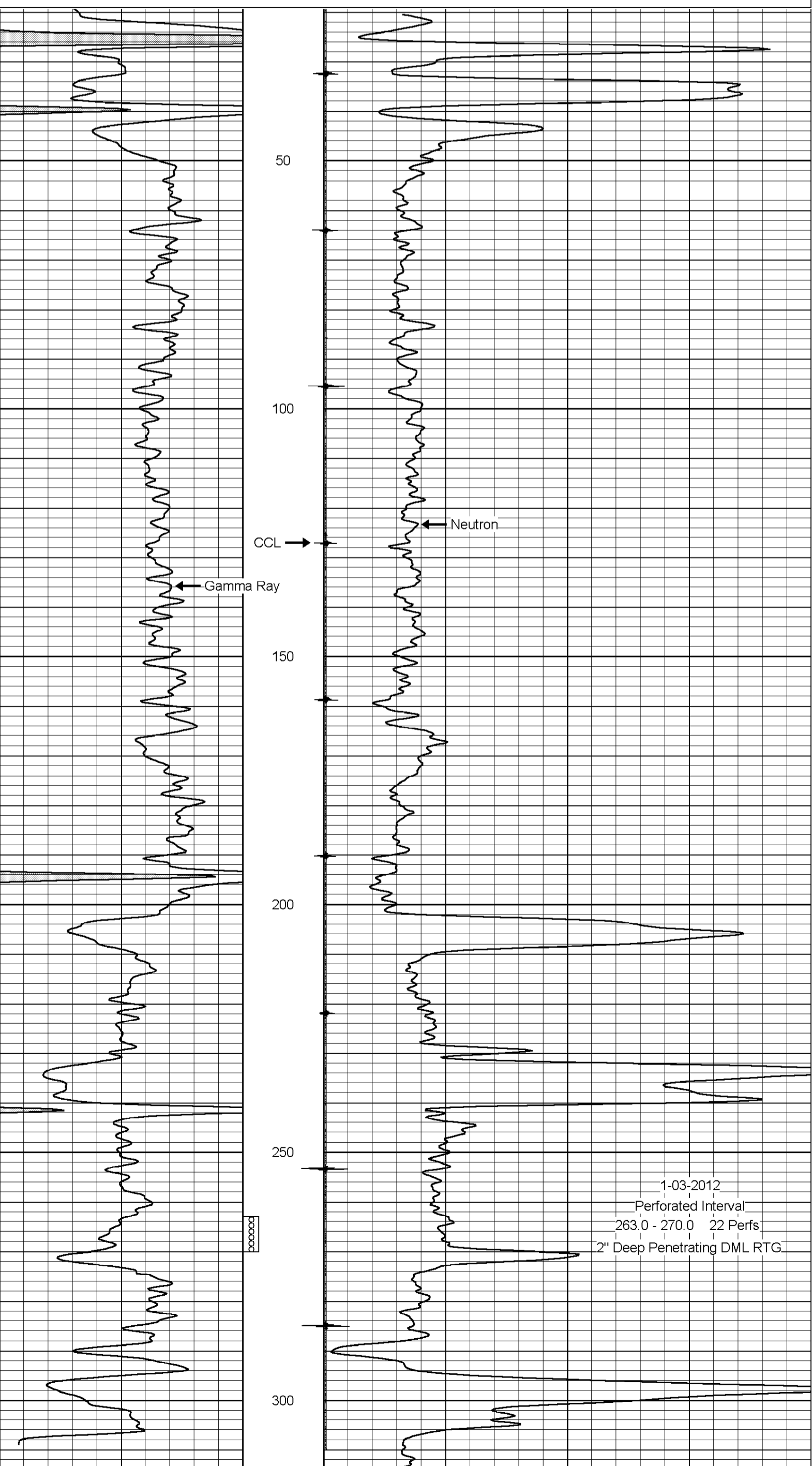
All interpretations are opinions based on inferences from electrical or other measurements and we cannot and do not guarantee the accuracy or correctness of any interpretation, and we shall not, except in the case of gross or willful negligence on our part, be liable or responsible for any loss, costs, damages, or expenses incurred or sustained by anyone resulting from any interpretation made by any of our officers, agents or employees. These interpretations are also subject to our general terms and conditions set out in our current Price Schedule.

Comments

Drilling Contractor :
 Dale Jackson Production Company

Database File: bark6cn.db
 Dataset Pathname: pass1
 Presentation Format: gr-n-ccl
 Dataset Creation: Tue Oct 04 08:48:34 2011 by Log Warrior Version 6.6
 Charted by: Depth in Feet scaled 1:240

0	Gamma Ray	150	100	Neutron	1800
150	Gamma Ray	300			



0	Gamma Ray	150	100	Neutron	1800
150	Gamma Ray	300			