



**MIDWEST SURVEYS**  
 LOGGING - PERFORATING - CONSULTING SERVICES  
 P.O. Box 68, Osawatomie, KS 66064  
 913 / 755 - 2128

**GAMMA RAY / NEUTRON / CCL**

API # 15-107-24,481

File No.

Company Bobcat Oilfield Services, Inc.

Well North Baker No. C-3

Field Cadmus / LaCygne

County Linn State Kansas

Location 2310' FSL & 4620' FEL  
N/2-NW-SW

Other Services Perforate

Sec. 5 Twp. 20S Rge. 23E

Permanent Datum GL Elevation NA

Log Measured From GL

Drilling Measured From GL

Elevation K.B. NA  
D.F. NA  
G.L. NA

Date 09-23-2011

Run Number One

Depth Driller 321.0

Depth Logger 319.0

Bottom Logged Interval 318.0

Top Log Interval 20.0

Fluid Level Full

Type Fluid Water

Density / Viscosity NA

Salinity - PPM Cl NA

Max Recorded Temp NA

Estimated Cement Top 0.0

Equipment No. Location 104 Osawatomie

Recorded By Gary Wndirsch

Witnessed By Bob Eberhart

BORE-HOLE RECORD				CASING RECORD			
Run No.	BIT	FROM	TO	SIZE	WGT.	FROM	TO
One	8.75"	0.0	20.0	6.00"	0.0	0.0	20.0
Two	5.625"	20.0	321.0	2.875"	0.0	0.0	319.0

<<< Fold Here >>>

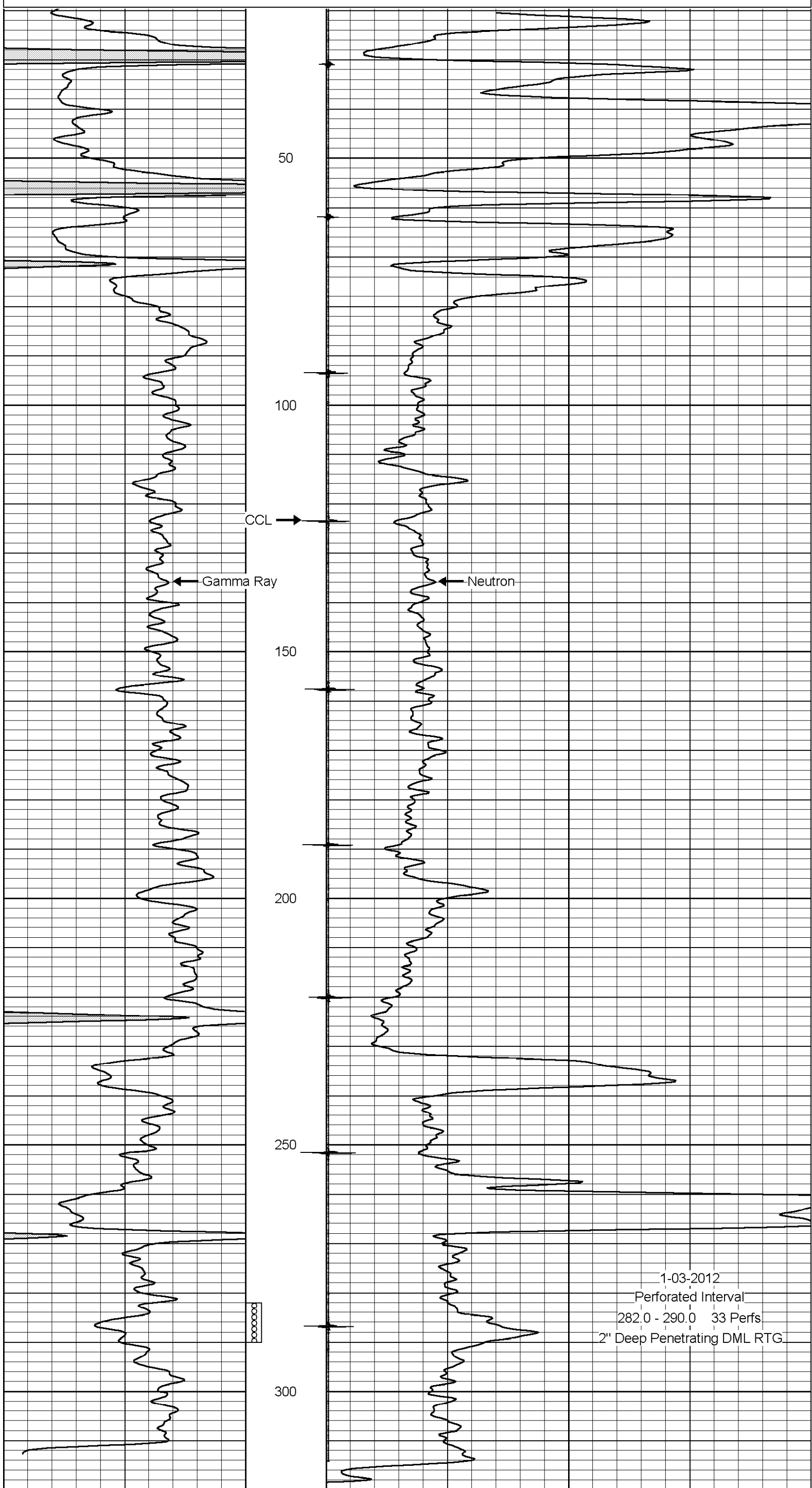
All interpretations are opinions based on inferences from electrical or other measurements and we cannot and do not guarantee the accuracy or correctness of any interpretation, and we shall not, except in the case of gross or willful negligence on our part, be liable or responsible for any loss, costs, damages, or expenses incurred or sustained by anyone resulting from any interpretation made by any of our officers, agents or employees. These interpretations are also subject to our general terms and conditions set out in our current Price Schedule.

Comments

Drilling Contractor :  
Dale Jackson Production Company

Database File: bakr3cn.db  
 Dataset Pathname: pass1  
 Presentation Format: gr-n-ccl  
 Dataset Creation: Fri Sep 23 09:44:52 2011 by Log Warrior Version 6.6  
 Charted by: Depth in Feet scaled 1:240

0	Gamma Ray	150	100	Neutron	1800
150	Gamma Ray	300			



0	Gamma Ray	150	100	Neutron	1800
150	Gamma Ray	300			

1-03-2012  
 Perforated Interval  
 282.0 - 290.0 33 Perfs  
 2" Deep Penetrating DML RTG