



**MIDWEST SURVEYS**  
 LOGGING - PERFORATING - CONSULTING SERVICES  
 P.O. Box 68, Osawatomie, KS 66064  
 913 / 755 - 2128

**GAMMA RAY / NEUTRON / CCL**

File No. \_\_\_\_\_  
 Company **Bobcat Oilfield Services, Inc.**  
 Well **North Baker No. A-4**  
 Field **Cadmus / LaCygne**  
 County **Linn** State **Kansas**  
 Location **2620' FSL & 4290' FEL**  
**N/2-NE-NW-SW**  
 Sec. **5** Twp. **20S** Rge. **23E**  
 Permanent Datum **GL** Elevation **NA**  
 Log Measured From **GL**  
 Drilling Measured From **GL**  
 Other Services **Perforate**  
 Elevation **NA**  
 K.B. **NA**  
 D.F. **NA**  
 G.L. **NA**

API # 15-107-24,543

Date	09-23-2011	
Run Number	One	
Depth Driller	330.0	
Depth Logger	324.5	
Bottom Logged Interval	323.5	
Top Log Interval	20.0	
Fluid Level	Full	
Type Fluid	Water	
Density / Viscosity	NA	
Salinity - PPM Cl	NA	
Max Recorded Temp	NA	
Estimated Cement Top	0.0	
Equipment No.	104	Osawatomie
Recorded By	Gary Windisch	
Witnessed By	Bob Eberhart	

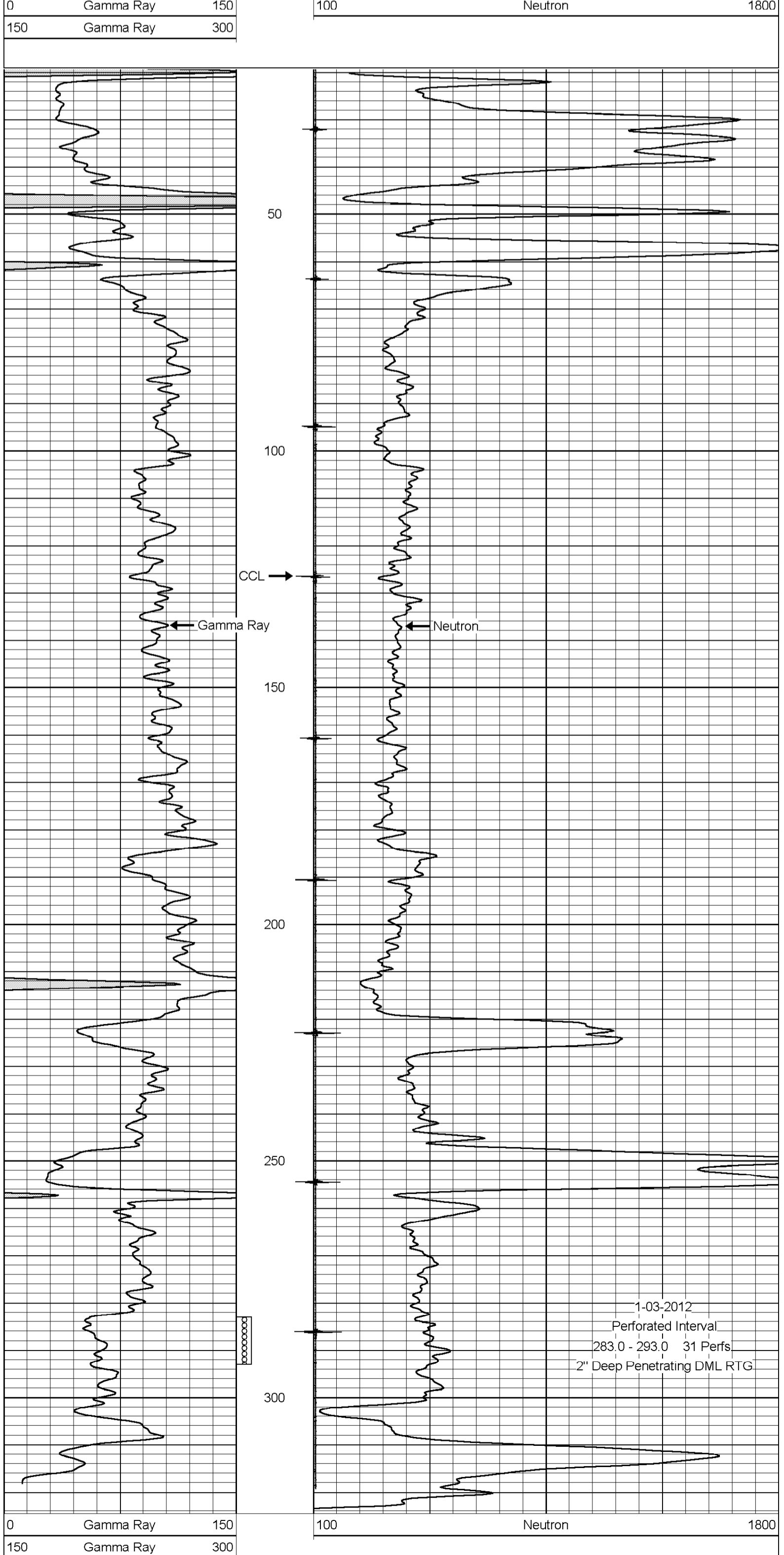
<<< Fold Here >>>

All interpretations are opinions based on inferences from electrical or other measurements and we cannot and do not guarantee the accuracy or correctness of any interpretation, and we shall not, except in the case of gross or willful negligence on our part, be liable or responsible for any loss, costs, damages, or expenses incurred or sustained by anyone resulting from any interpretation made by any of our officers, agents or employees. These interpretations are also subject to our general terms and conditions set out in our current Price Schedule.

**Comments**

Drilling Contractor :  
**Dale Jackson Production Company**

Database File: bakr4an.db  
 Dataset Pathname: pass1  
 Presentation Format: gr-n-ccl  
 Dataset Creation: Fri Sep 23 09:11:31 2011 by Log Warrior Version 6.6  
 Charted by: Depth in Feet scaled 1:240



0	Gamma Ray	150
150	Gamma Ray	300

100	Neutron	1800
-----	---------	------