



Dual Compensated  
Porosity Log

DIGITAL LOG (785) 625-3858

15-051-26195-00-00

API No.	Company Hertel Oil Company, LLC		Location S/2 SE SE 425' FSL / 580' FEL	Other Services DIL MEL
	Well Wasinger #2	County Ellis		
	Field Dechant South			
	Sec: 13	Twp: 15S	Rge: 19W	
Permanent Datum	Ground Level	Elevation 2008		
Log Measured From	Kelly Bushing	8 Ft. Above Perm. Datum		
Drilling Measured From	Kelly Bushing			
Date	10/11/2011			Elevation K.B. 2016 D.F. G.L. 2008

Run Number	One						
Type Log	CNL / CDL						
Depth Driller	3700						
Depth Logger	3706						
Bottom Logged Interval	3685						
Top Logged Interval	2900						
Type Fluid In Hole	Chemical						
Salinity, PPM CL	4600						
Density	8.6						
Level	Full						
Max. Rec. Temp. F	113						
Operating Rig Time	4 Hours						
Equipment -- Location	15 Hays						
Recorded By	R. Barnhart						
Witnessed By	Randall Killian						
Borehole Record		Casing Record					
Run No.	Bit	From	To	Size	Wgt.	From	To
1	12.25	00	1193	8.625	24#	00	1193
2	7.875	1193	3700				

<<< Fold Here >>>

All interpretations are opinions based on inferences from electrical or other measurements and we cannot and do not guarantee the accuracy or correctness of any interpretation, and we shall not, except in the case of gross or willful negligence on our part, be liable or responsible for any loss, costs, damages, or expenses incurred or sustained by anyone resulting from any interpretation made by any of our officers, agents or employees. These interpretations are also subject to our general terms and conditions set out in our current Price Schedule.

Comments

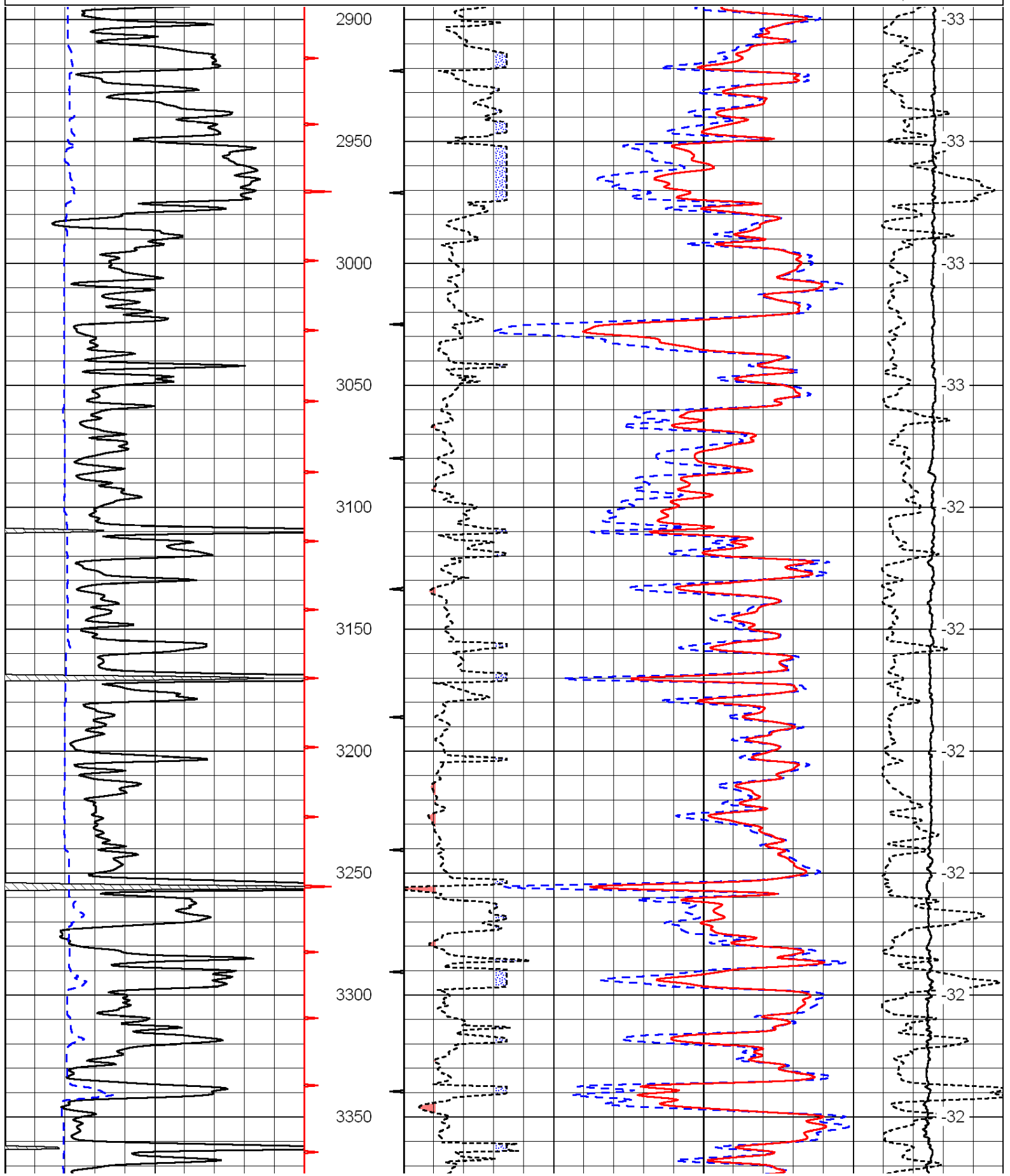
Thank you for using Log-Tech, Inc.  
(785) 625-3858

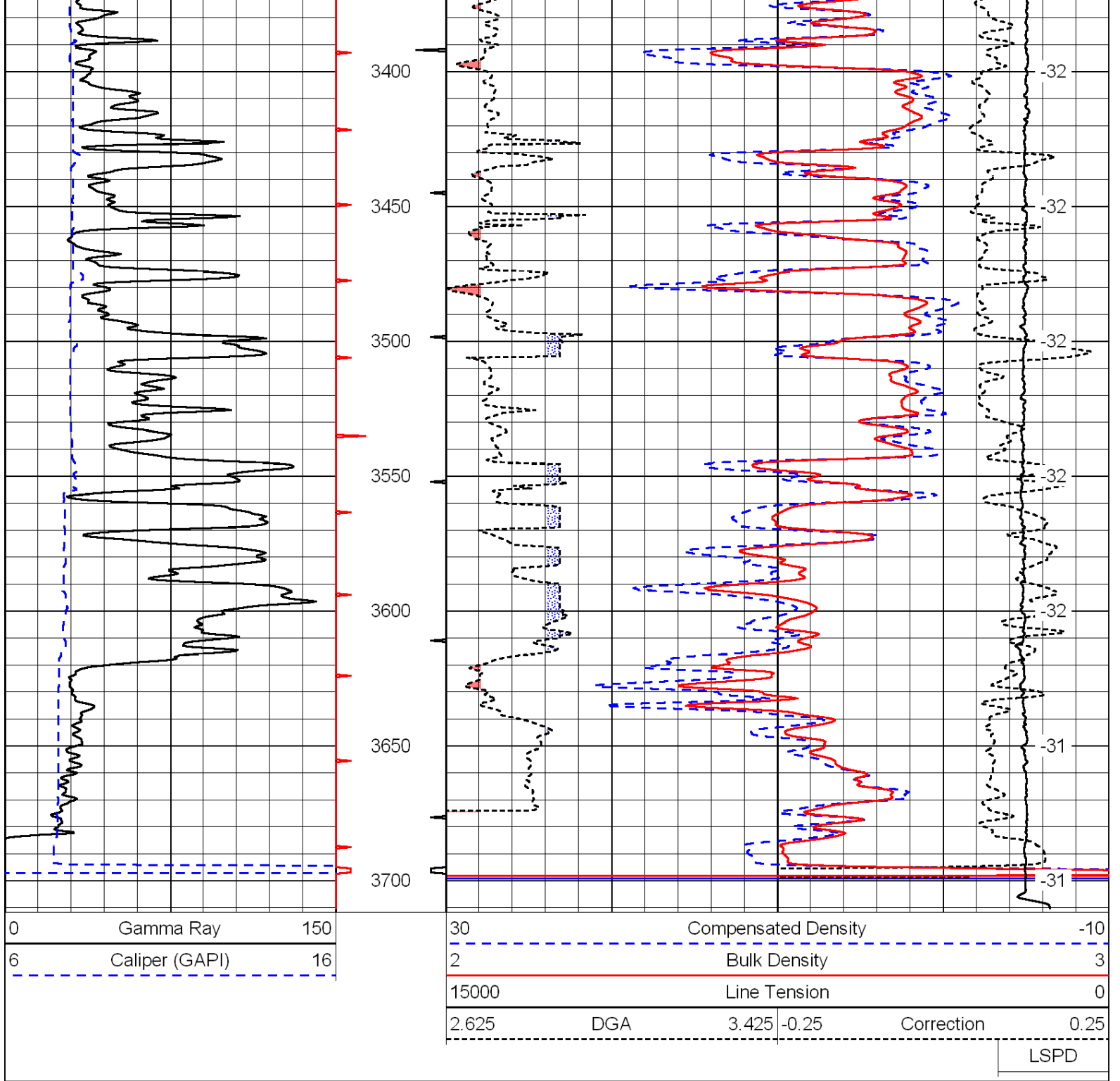
Antonino, KS:  
1E, 3S, 1/8W, N into

Database File: c:\warrior\data\hertel\_wasinger #2\hertelhd.db  
 Dataset Pathname: dil/htmlmain  
 Presentation Format: cdl  
 Dataset Creation: Tue Oct 11 07:17:06 2011  
 Charted by: Depth in Feet scaled 1:600

0	Gamma Ray	150
6	Caliper (GAPI)	16

30	Compensated Density		-10
2	Bulk Density		3
15000	Line Tension		0
2.625	DGA	3.425	-0.25
Correction			0.25
LSPD			





Database File: c:\warrior\data\hertel\_wasinger #2\hertelhd.db  
 Dataset Pathname: dil/htmlmain  
 Presentation Format: cndlspec  
 Dataset Creation: Tue Oct 11 07:17:06 2011  
 Charted by: Depth in Feet scaled 1:240

