



DIGITAL LOG (785) 625-3858

**Microresistivity
Log**

15-051-26195-00-00

API No.	Company	Hertel Oil Company, LLC
	Well	Wasinger #2
	Field	Dechant South
	County	Ellis
	State	Kansas
Location	S/2 SE SE 425' FSL / 580' FEL	
Sec: 13	Twp: 15S	Rge: 19W
Permanent Datum	Ground Level	Elevation 2008
Log Measured From	Kelly Bushing	8 Ft. Above Perm. Datum
Drilling Measured From	Kelly Bushing	
		Other Services CNL / CDL DIL
		Elevation K.B. 2016 D.F. 2008 G.L. 2008

Date	10/11/2011
Run Number	Two
Depth Driller	3700
Depth Logger	3706
Bottom Logged Interval	3705
Top Log Interval	2900
Casing Driller	8.625 @ 1193
Casing Logger	1191
Bit Size	7.875
Type Fluid in Hole	Chemical
Salinity, ppm CL	4600
Density / Viscosity	8.6 62
pH / Fluid Loss	10.0 8.8
Source of Sample	Flowline
Rm @ Meas. Temp	1.40 @ 70
Rmf @ Meas. Temp	1.05 @ 70
Rmc @ Meas. Temp	1.89 @ 70
Source of Rmf / Rmc	Charts
Rm @ BHT	0.87 @ 113
Operating Rig Time	4 Hours
Max Rec. Temp. F	113
Equipment Number	15
Location	Hays
Recorded By	R. Barnhart
Witnessed By	Randall Killian

<<< Fold Here >>>

All interpretations are opinions based on inferences from electrical or other measurements and we cannot and do not guarantee the accuracy or correctness of any interpretation, and we shall not, except in the case of gross or willful negligence on our part, be liable or responsible for any loss, costs, damages, or expenses incurred or sustained by anyone resulting from any interpretation made by any of our officers, agents or employees. These interpretations are also subject to our general terms and conditions set out in our current Price Schedule.

Comments

Thank you for using Log-Tech, Inc.
(785) 625-3858

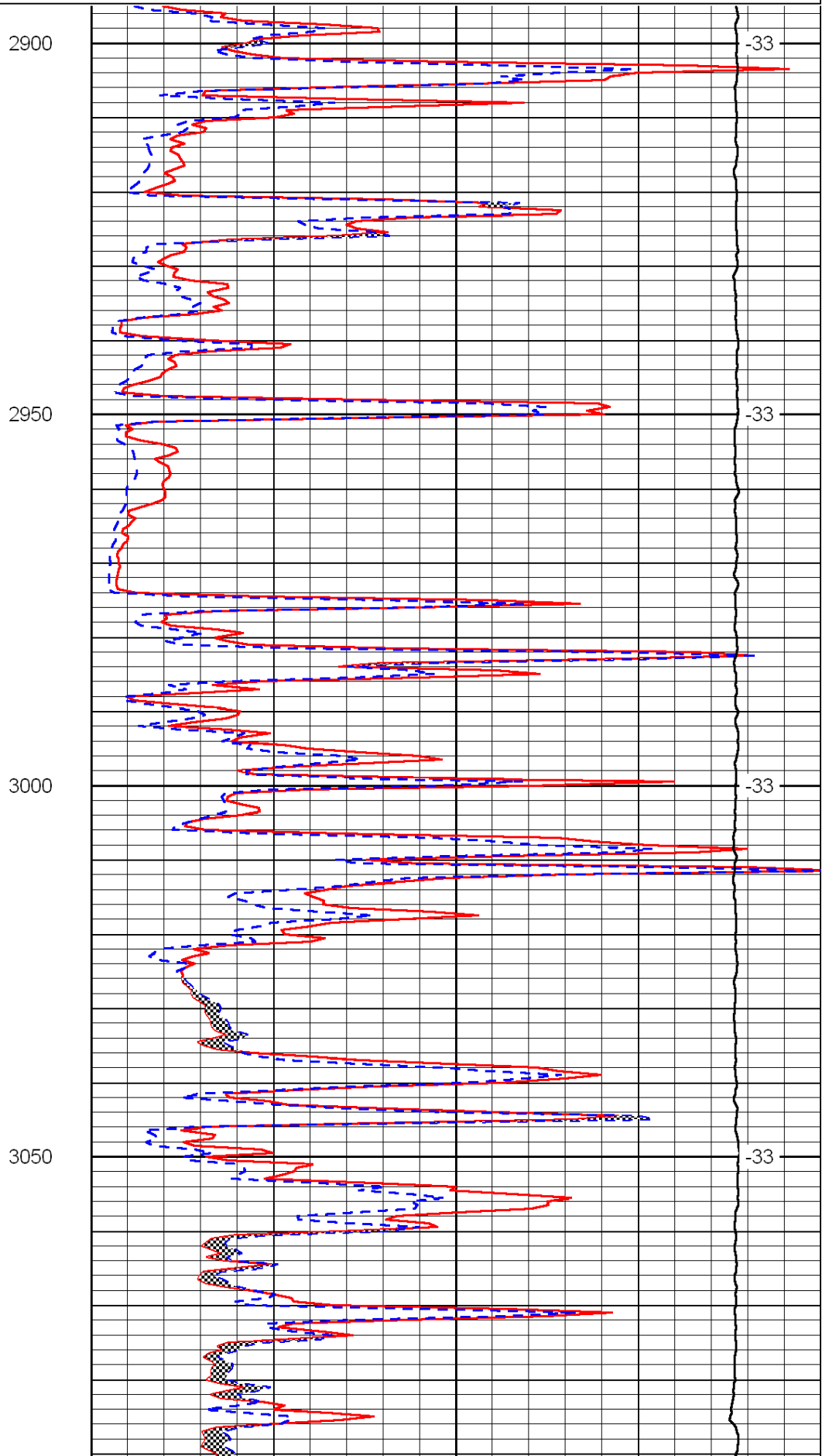
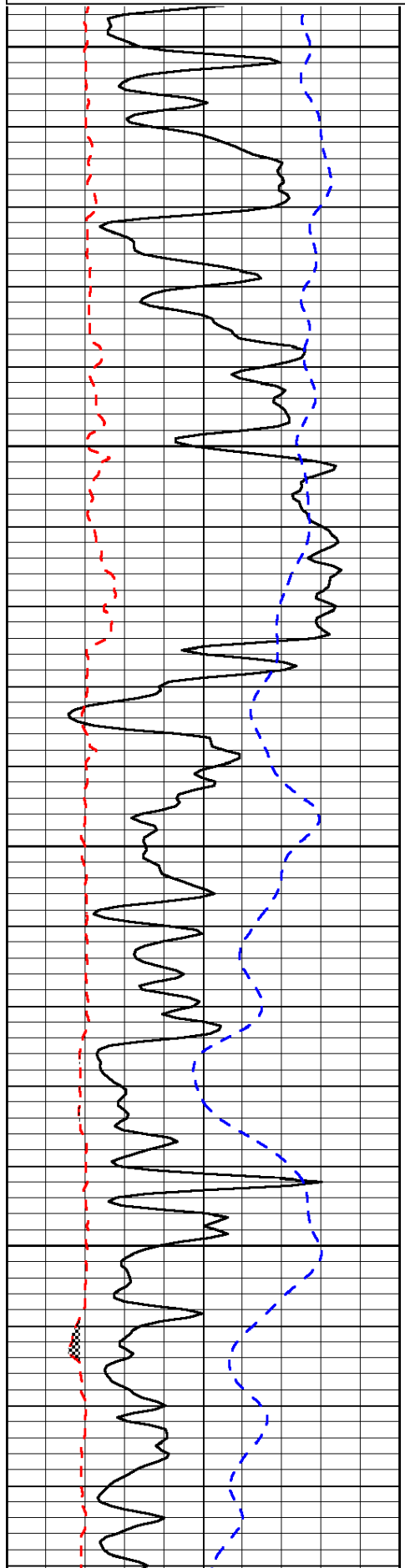
Antonino, KS:
1E, 3S, 1/8W, N into

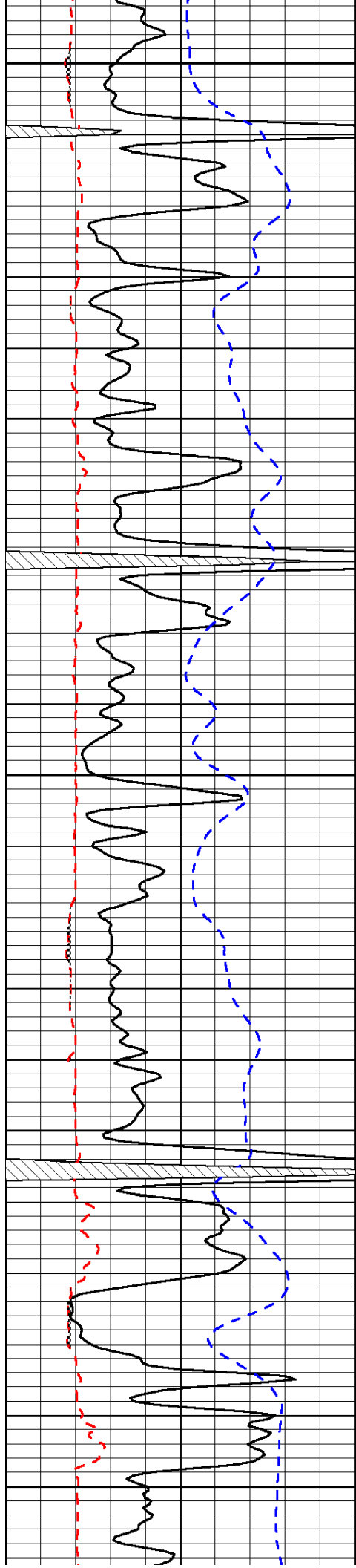
Database File: c:\warrior\data\hertel_wasinger #2\hertelhd.db
 Dataset Pathname: dil/htmlmain
 Presentation Format: micro
 Dataset Creation: Tue Oct 11 07:17:06 2011
 Charted by: Depth in Feet scaled 1:240

0	Gamma Ray	150
6	Micro Log Caliper (GAPI)	16
-200	SP (mV)	0

0	Micro Inverse 1 X 1	40
0	Micro Normal 2"	40
15000	Line Weight	0

LSPD





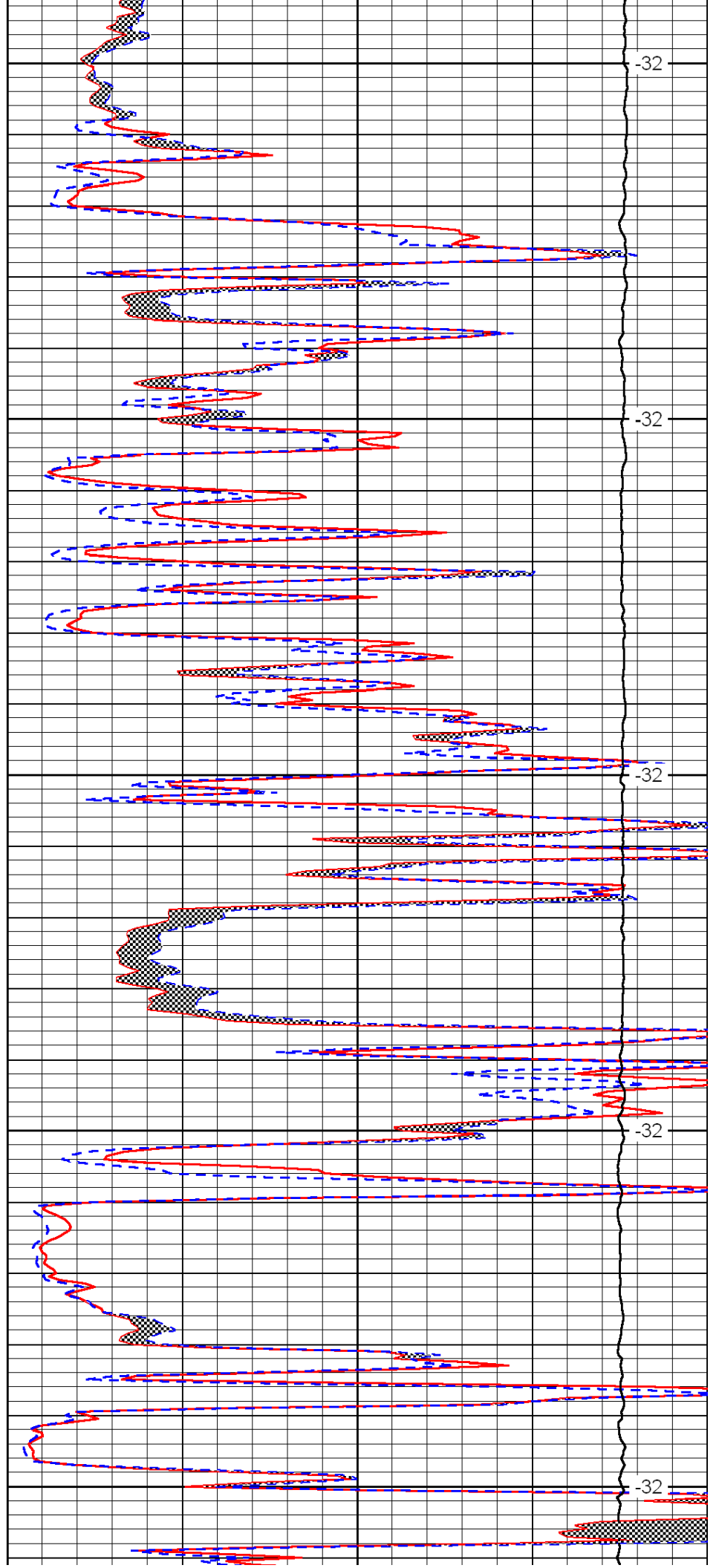
3100

3150

3200

3250

3300



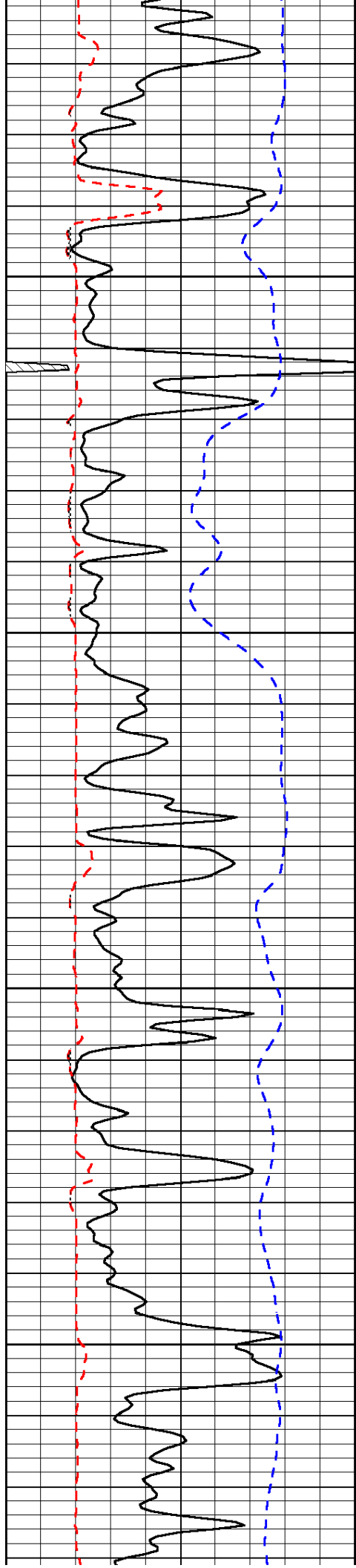
-32

-32

-32

-32

-32

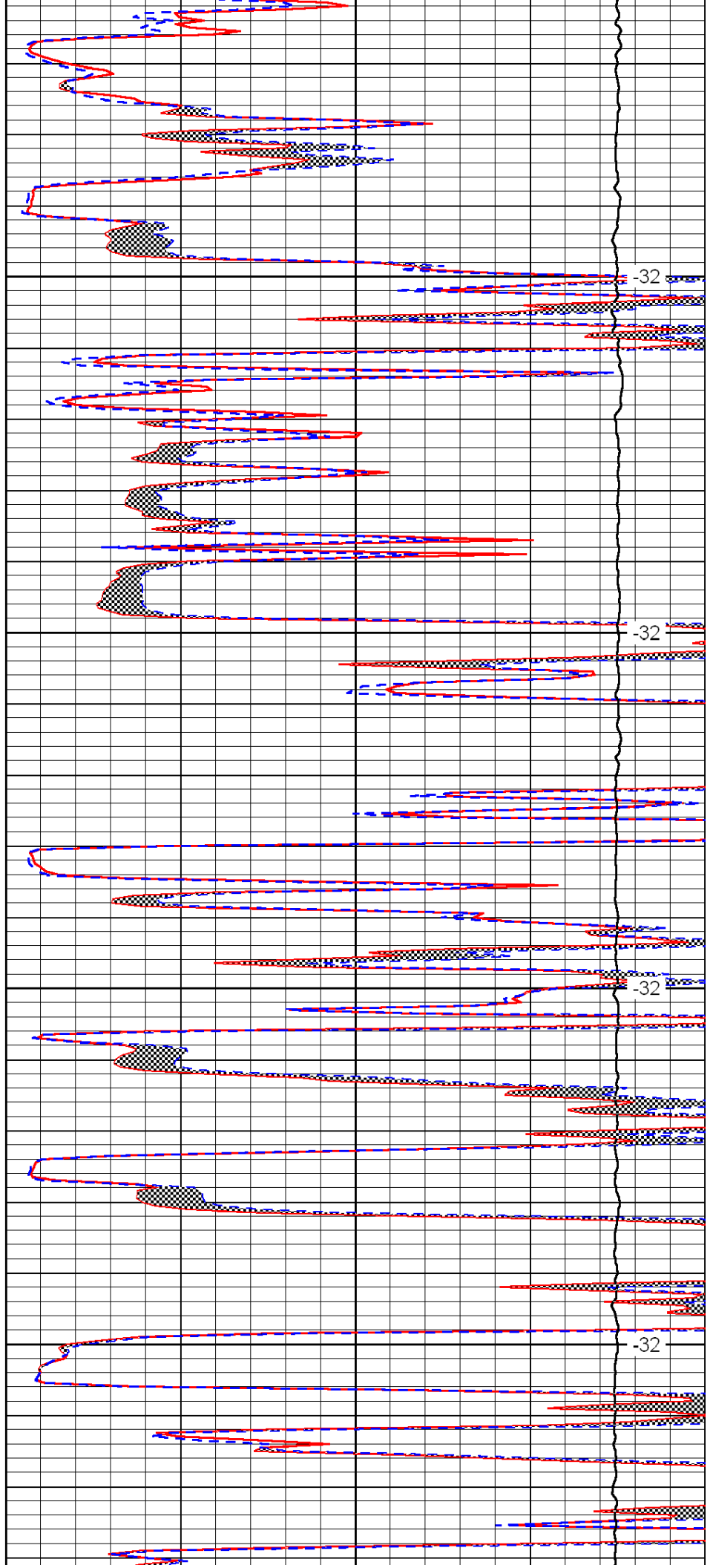


3350

3400

3450

3500

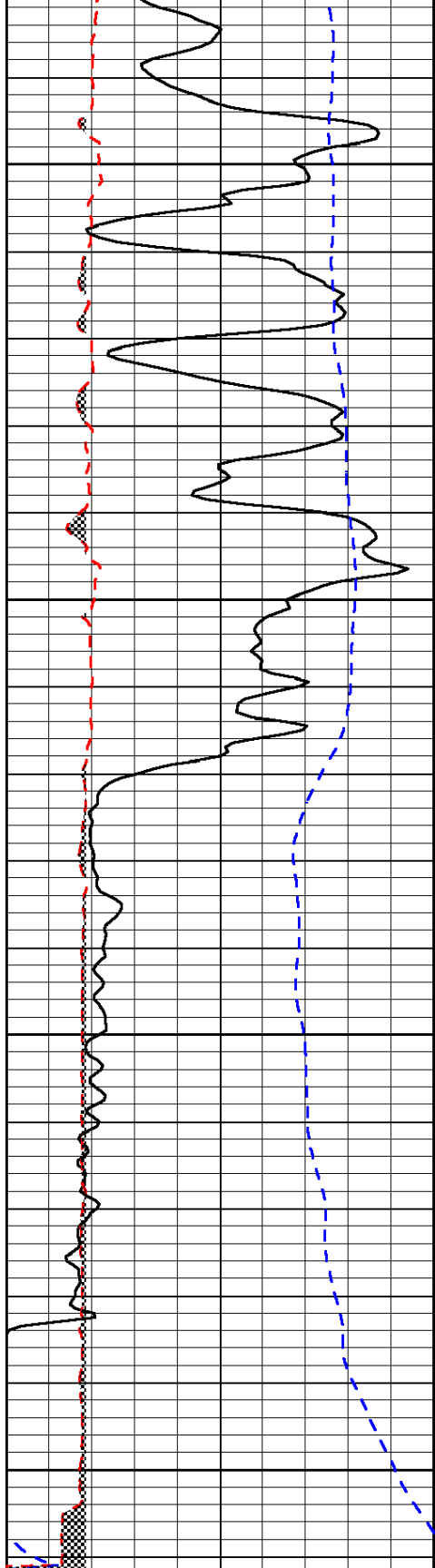


-32

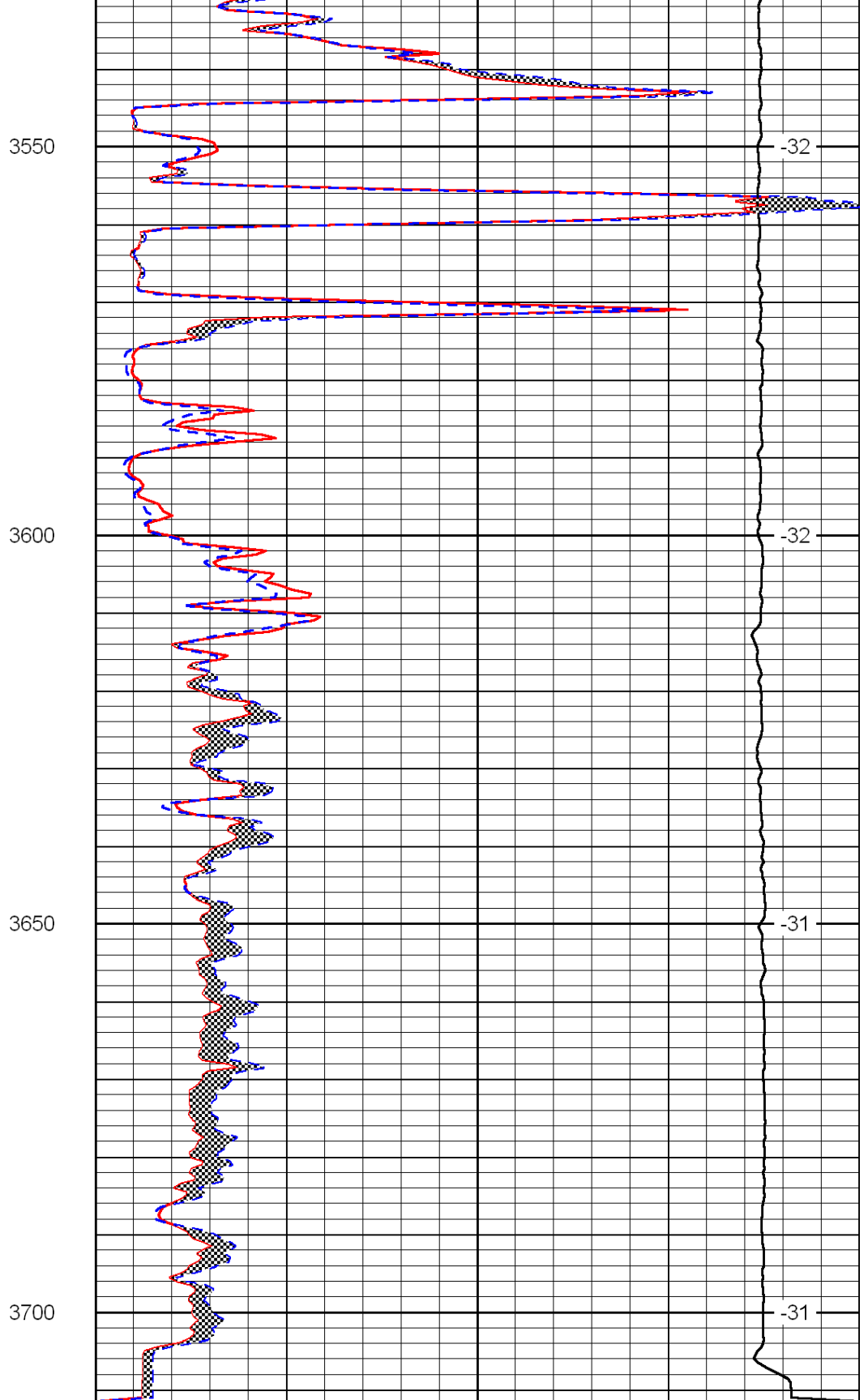
-32

-32

-32



0	Gamma Ray	150
6	Micro Log Caliper (GAPI)	16
-200	SP (mV)	0



0	Micro Inverse 1 X 1	40
0	Micro Normal 2''	40
15000	Line Weight	0

LSPD