



DIGITAL LOG (785) 625-3858

Microresistivity  
Log

15-159-22,665-00-00

API No.

Company RAMA Operating Company, Inc.

Well Proffitt No. 5-8

Field Chase-Silica

County Rice State Kansas

Location

NE SW SW NE  
2,200' FNL & 2,100' FEL

Other Services  
CNL/CDL  
DIL

Sec: 8 Twp: 20S Rge: 9W

Permanent Datum Ground Level Elevation 1729  
Log Measured From Kelly Bushing 11 Ft. Above Perm. Datum  
Drilling Measured From Kelly Bushing

Elevation  
K.B. 1740  
D.F. 1729  
G.L. 1729

Date 10/31/2011

Run Number Two

Depth Driller 3320

Depth Logger 3320

Bottom Logged Interval 3319

Top Log Interval 2600

Casing Driller 8.625 @ 308

Casing Logger 305

Bit Size 7.875

Type Fluid in Hole Chemical

Salinity, ppm CL 6000

Density / Viscosity 9.3 47

pH / Fluid Loss 8.0 11.2

Source of Sample Flowline

Rm @ Meas. Temp .51 @ 70

Rmf @ Meas. Temp .38 @ 70

Rmc @ Meas. Temp .69 @ 70

Source of Rmf / Rmc Chats

Rm @ BHT .33 @ 109

Operating Rig Time 4 Hours

Max Rec. Temp. F 109

Equipment Number 10

Location Hays

Recorded By J. Long

Witnessed By Josh Austin

<<< Fold Here >>>

All interpretations are opinions based on inferences from electrical or other measurements and we cannot and do not guarantee the accuracy or correctness of any interpretation, and we shall not, except in the case of gross or willful negligence on our part, be liable or responsible for any loss, costs, damages, or expenses incurred or sustained by anyone resulting from any interpretation made by any of our officers, agents or employees. These interpretations are also subject to our general terms and conditions set out in our current Price Schedule.

Comments

Thank you for using Log-Tech, Inc.  
(785) 625-3858

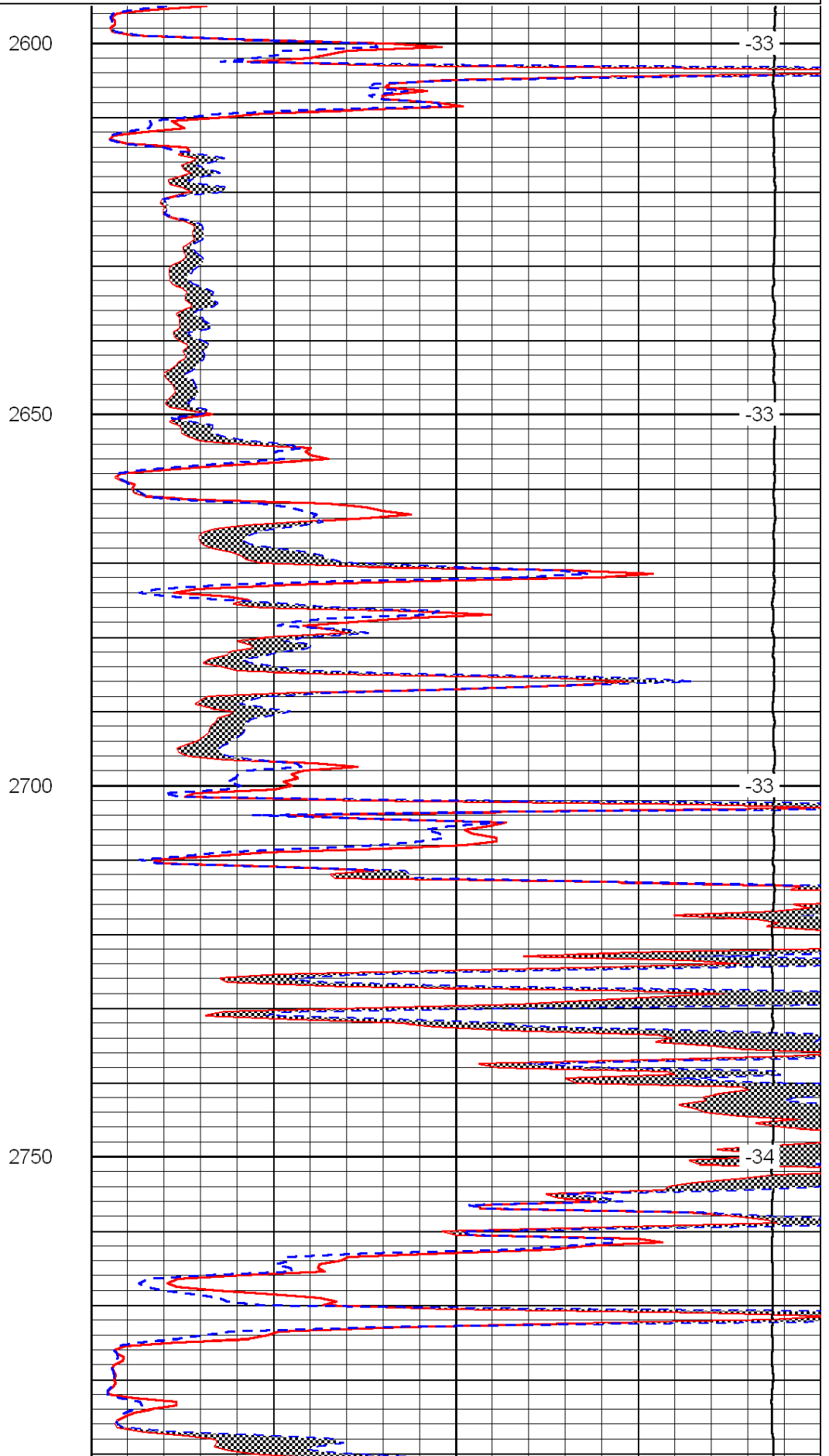
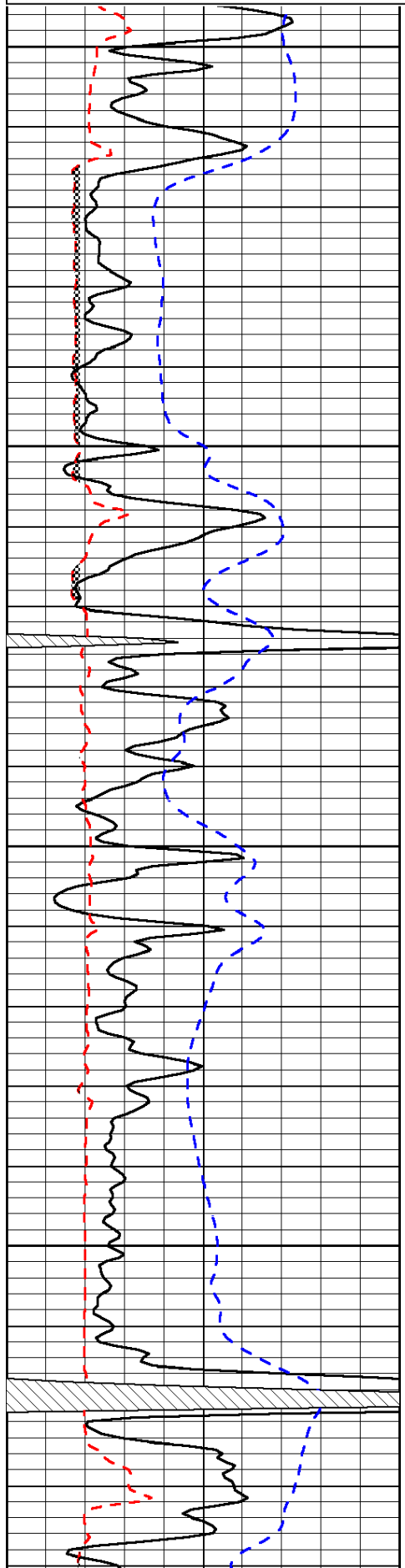
Chase, 1 East, 1 1/2 South, West Into

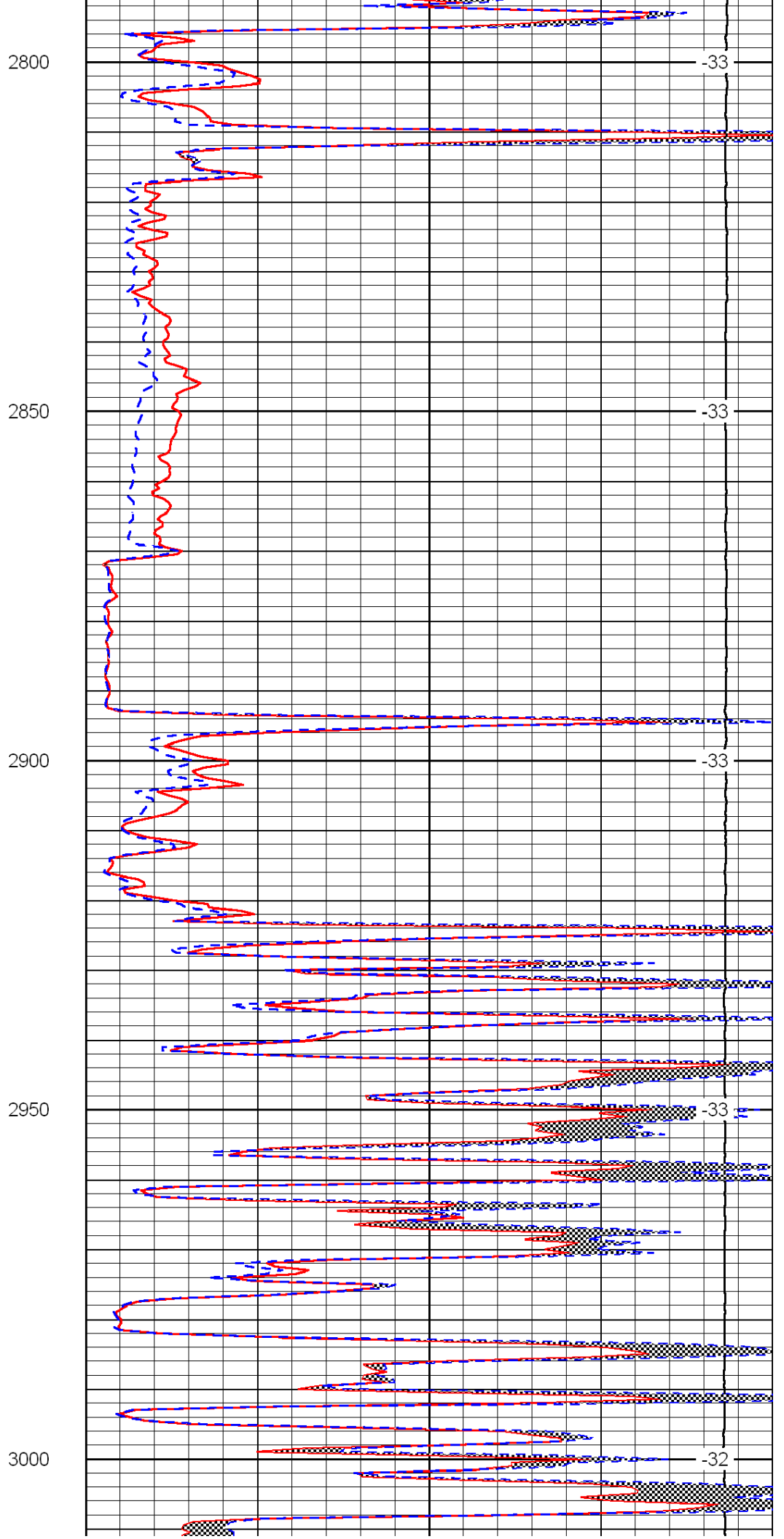
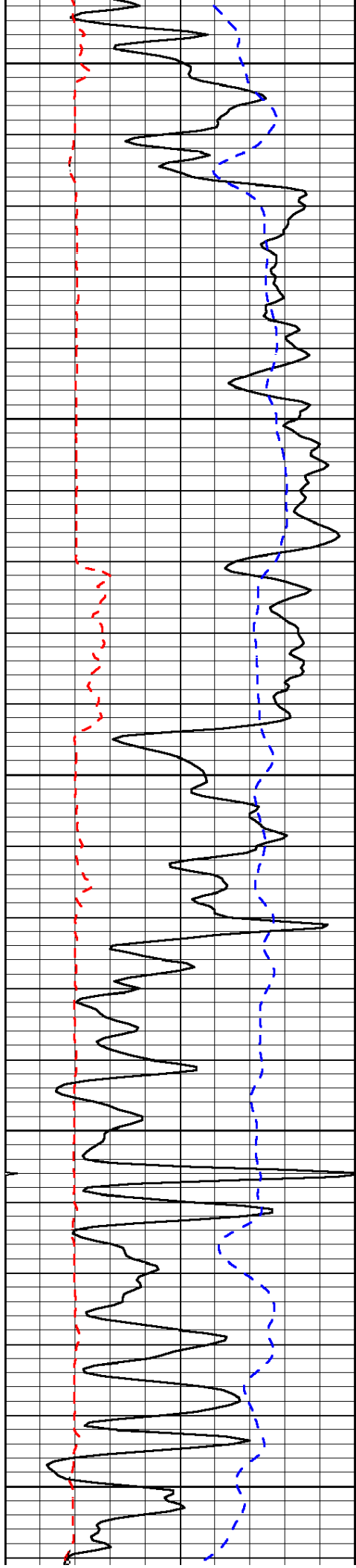
Database File: c:\warrior\data\rama\_proffitt no. 5-8\rama\_proffitt\_5-8hd.db  
 Dataset Pathname: dil/ramastck  
 Presentation Format: micro  
 Dataset Creation: Mon Oct 31 20:38:20 2011  
 Charted by: Depth in Feet scaled 1:240

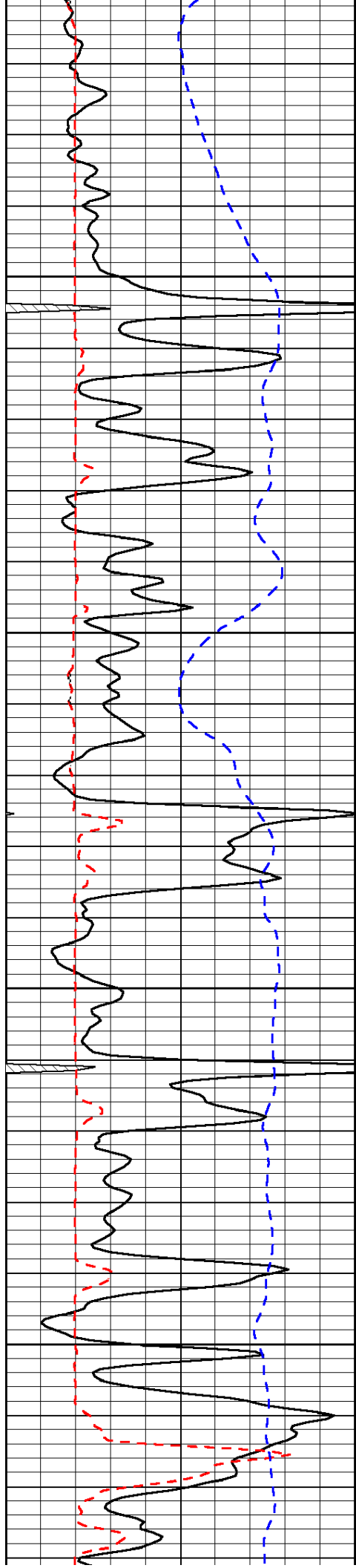
0	Gamma Ray	150
6	Micro Log Caliper (GAPI)	16
-200	SP (mV)	0

0	Micro Inverse 1 X 1	40
0	Micro Normal 2"	40
15000	Line Weight	0

LSPD





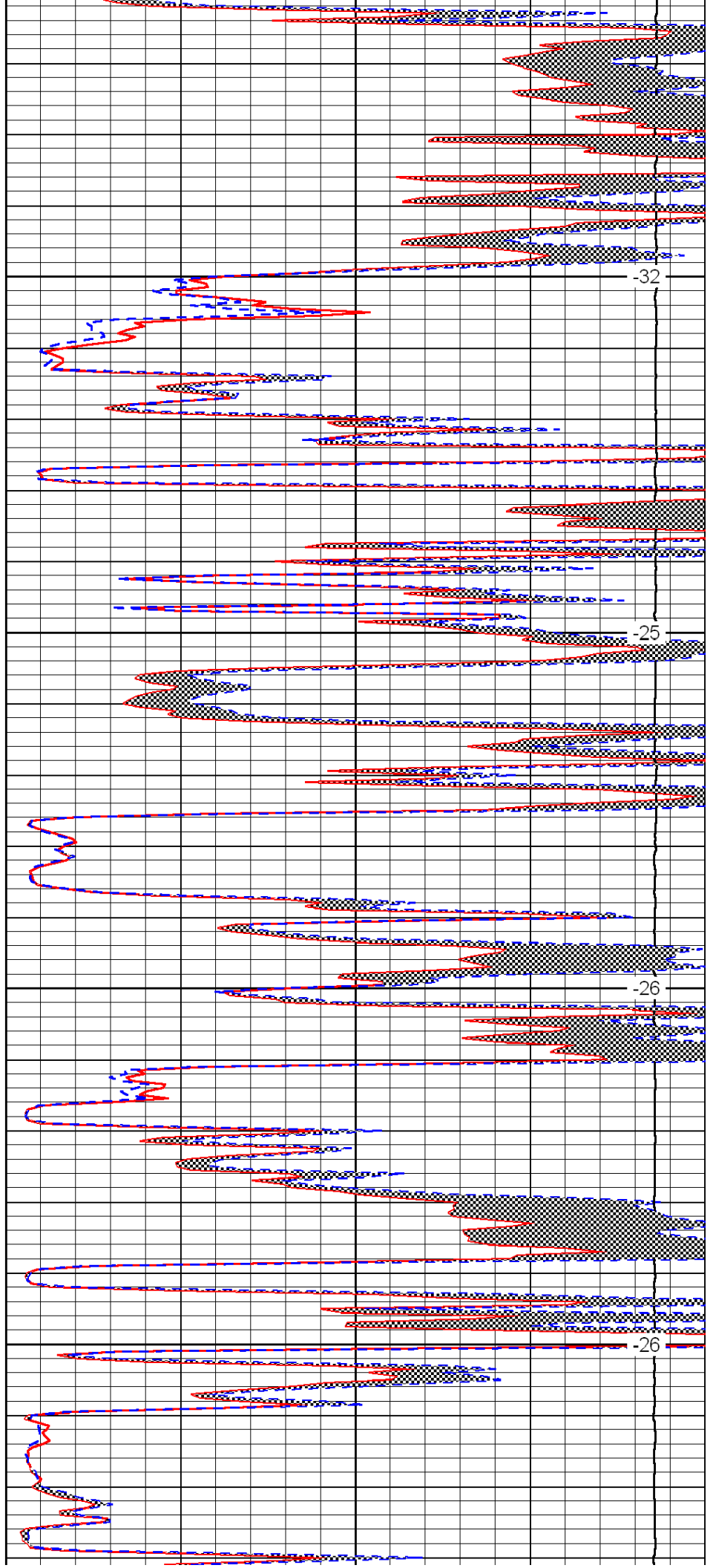


3050

3100

3150

3200

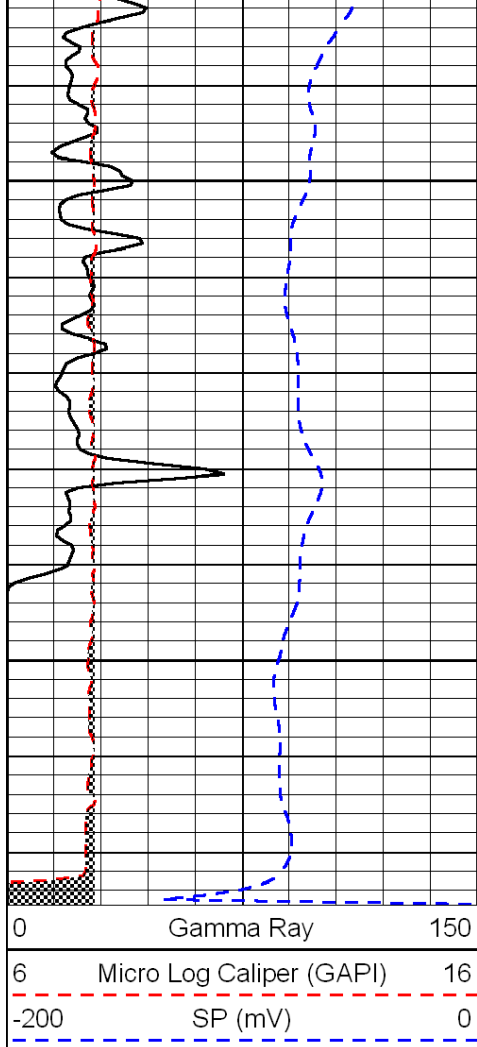


-32

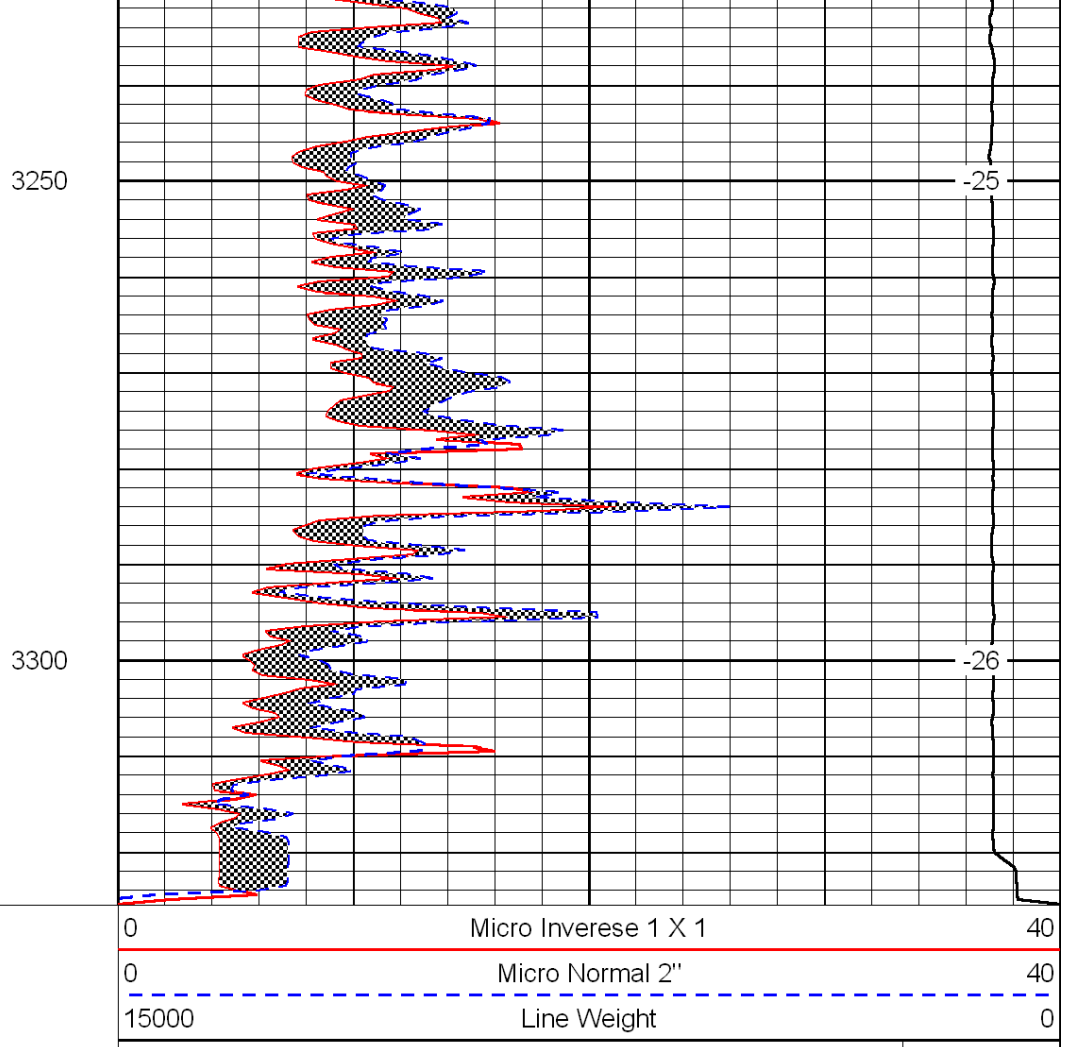
-25

-26

-26



0	Gamma Ray	150
6	Micro Log Caliper (GAPI)	16
-200	SP (mV)	0



0	Micro Inverse 1 X 1	40
0	Micro Normal 2''	40
15000	Line Weight	0

LSPD