



Dual Compensated Porosity Log

DIGITAL LOG (785) 625-3858

15-159-22,665-00-00

API No. 15-159-22,665-00-00

Company **RAMA Operating Company, Inc.**
 Well **Proffitt No. 5-8**
 Field **Chase-Silica**
 County **Rice** State **Kansas**

Location **NE SW SW NE
2,200' FNL & 2,100' FEL**

Sec: 8 Twp: 20S Rge: 9W

Other Services
DIL
MEL

Permanent Datum **Ground Level** Elevation **1729**
 Log Measured From **Kelly Bushing** 11 Ft. Above Perm. Datum
 Drilling Measured From **Kelly Bushing**

Elevation
K.B. 1740
D.F. 1729
G.L. 1729

Date **10/31/2011**

Run Number **One**

Type Log **CNL / CDL**

Depth Driller **3320**

Depth Logger **3320**

Bottom Logged Interval **3299**

Top Logged Interval **2600**

Type Fluid In Hole **Chemical**

Salinity, PPM CL **6000**

Density **9.3**

Level **Full**

Max. Rec. Temp. F **109**

Operating Rig Time **4 Hours**

Equipment -- Location **10 Hays**

Recorded By **J. Long**

Witnessed By **Josh Austin**

Borehole Record				Casing Record			
Run No.	Bit	From	To	Size	Wgt.	From	To
1	12.25	00	308	8.625	24#	00	308
2	7.875	308	3320				

<<< Fold Here >>>

All interpretations are opinions based on inferences from electrical or other measurements and we cannot and do not guarantee the accuracy or correctness of any interpretation, and we shall not, except in the case of gross or willful negligence on our part, be liable or responsible for any loss, costs, damages, or expenses incurred or sustained by anyone resulting from any interpretation made by any of our officers, agents or employees. These interpretations are also subject to our general terms and conditions set out in our current Price Schedule.

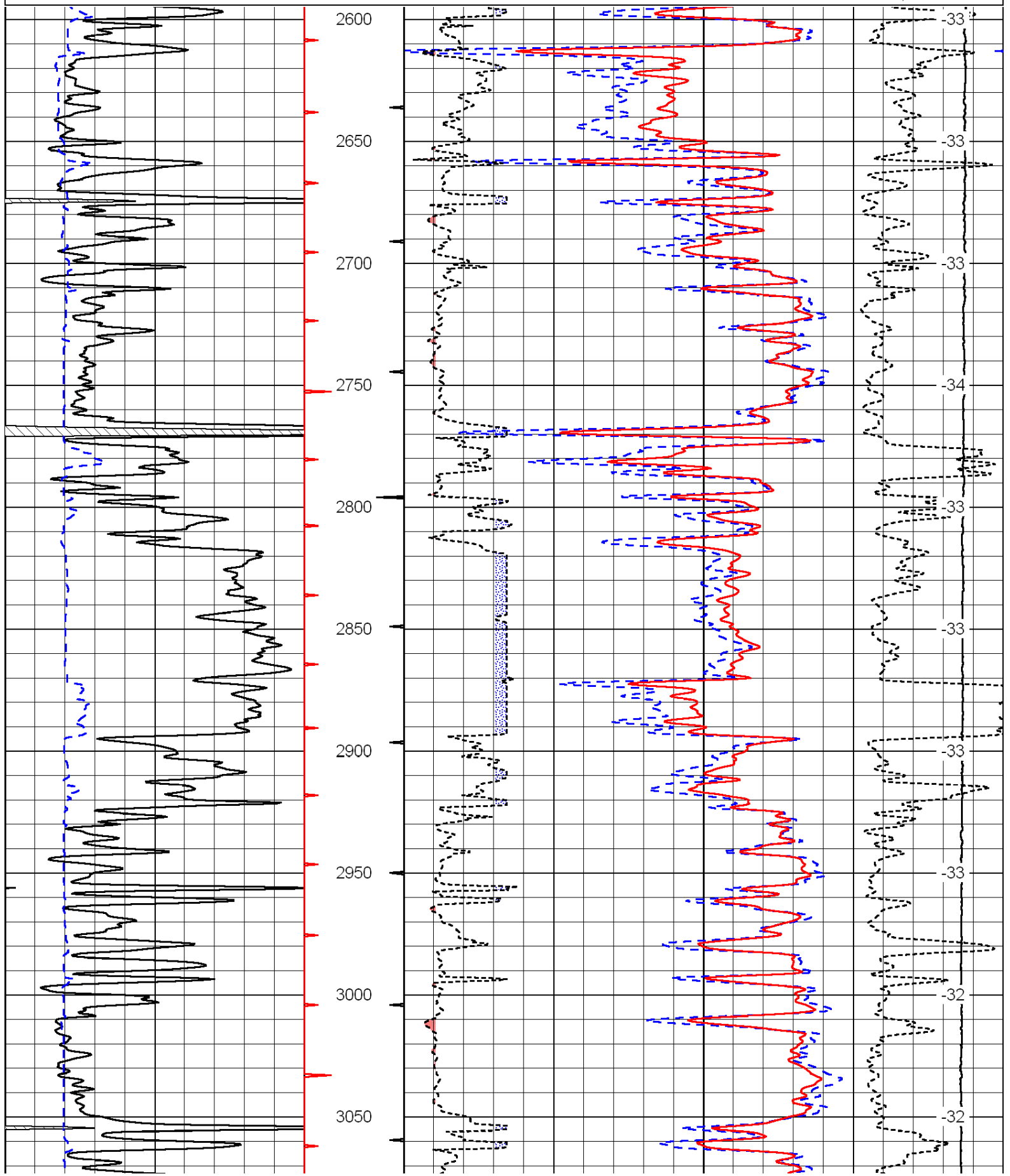
Comments

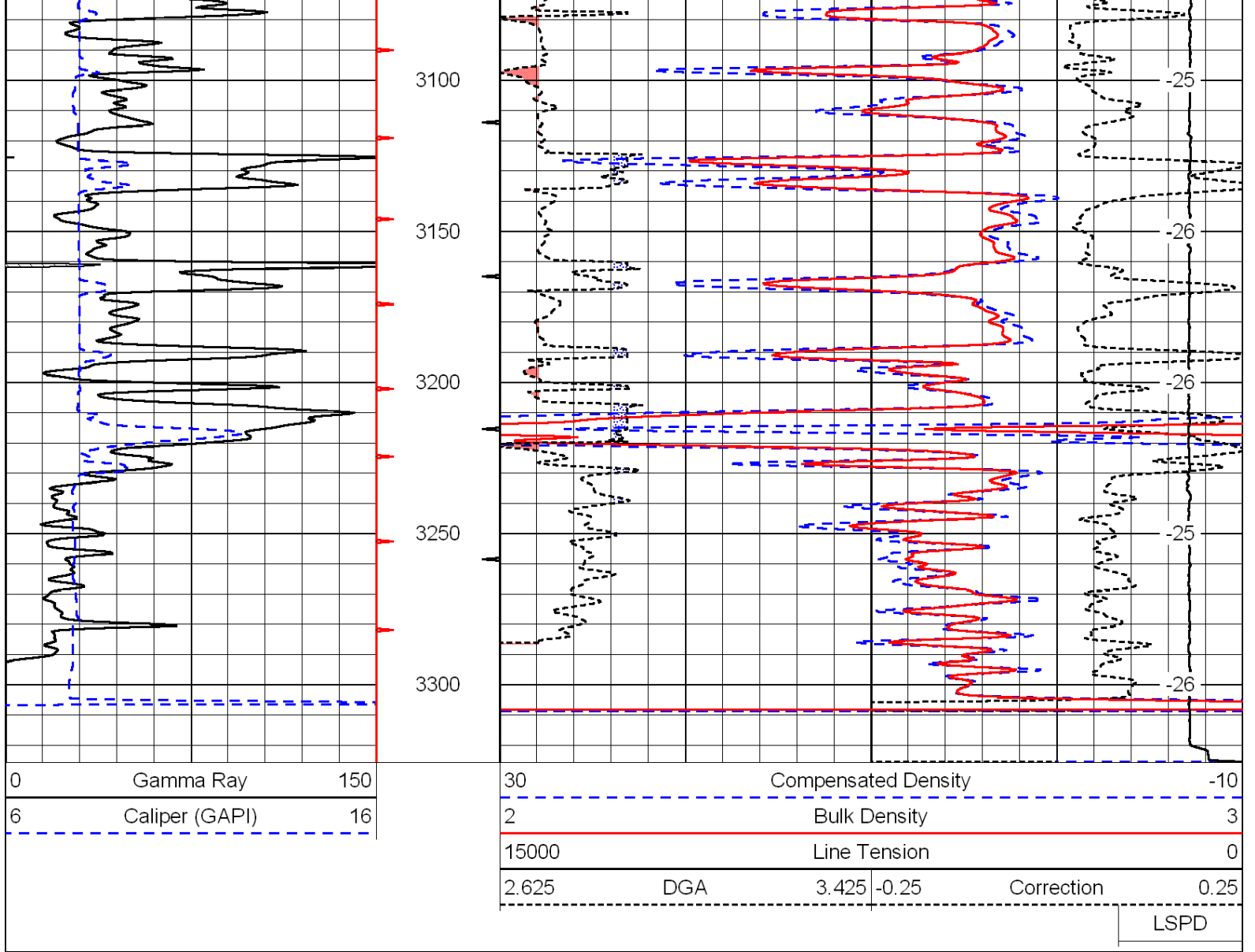
Thank you for using Log-Tech, Inc.
 (785) 625-3858

Chase, 1 East, 1 1/2 South, West Into

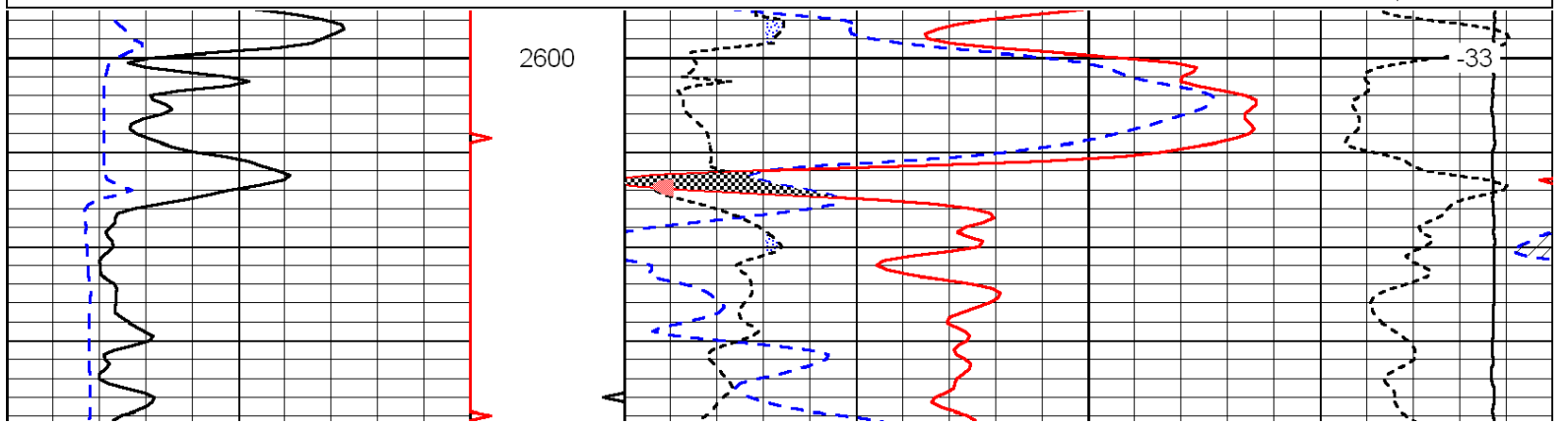
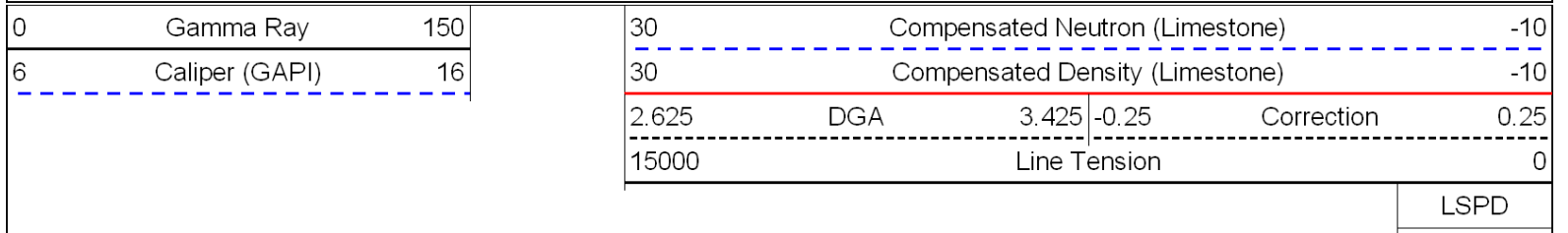
0	Gamma Ray	150
6	Caliper (GAPI)	16

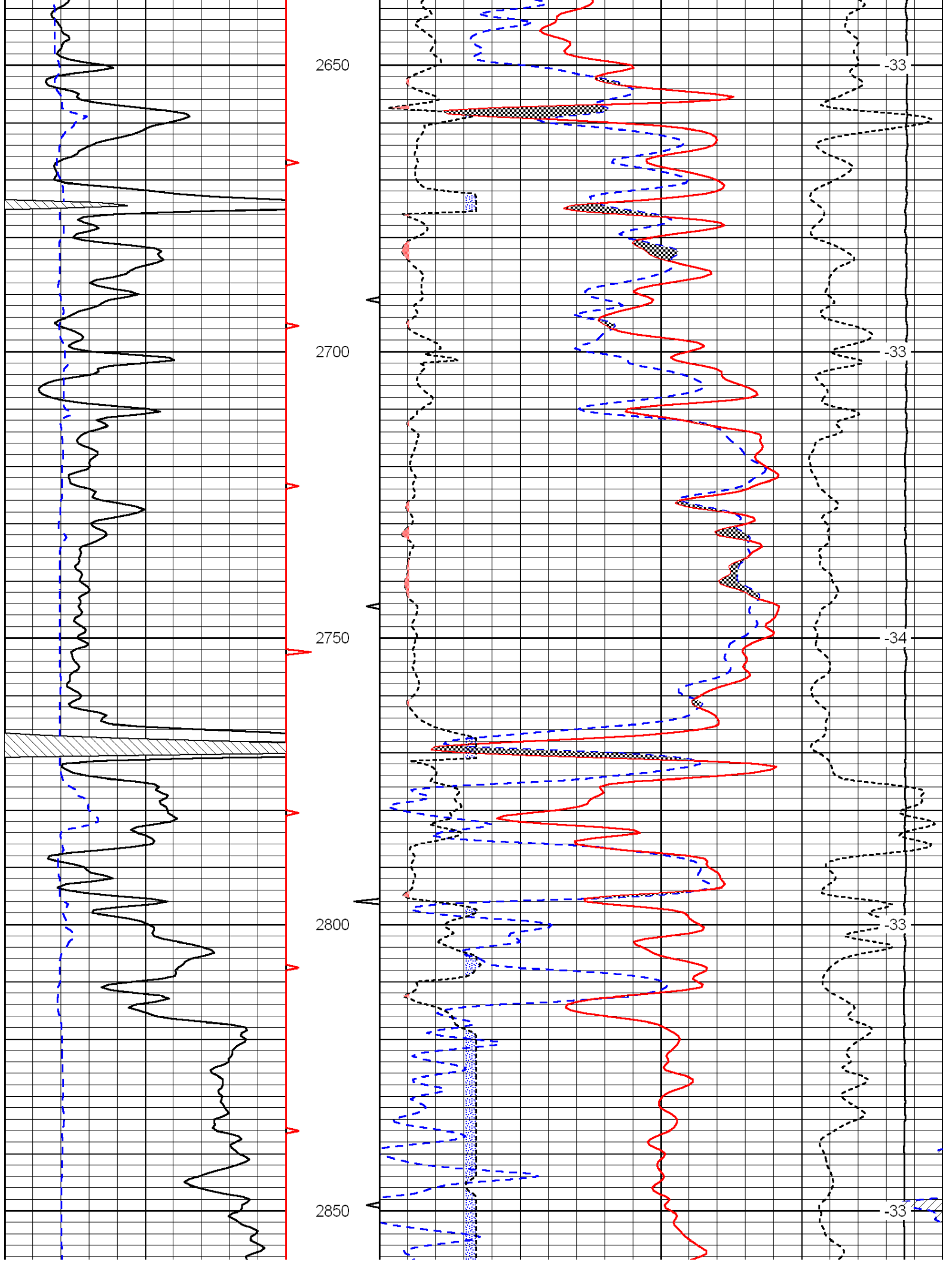
30	Compensated Density		-10
2	Bulk Density		3
15000	Line Tension		0
2.625	DGA	3.425	-0.25
			Correction
			0.25
LSPD			

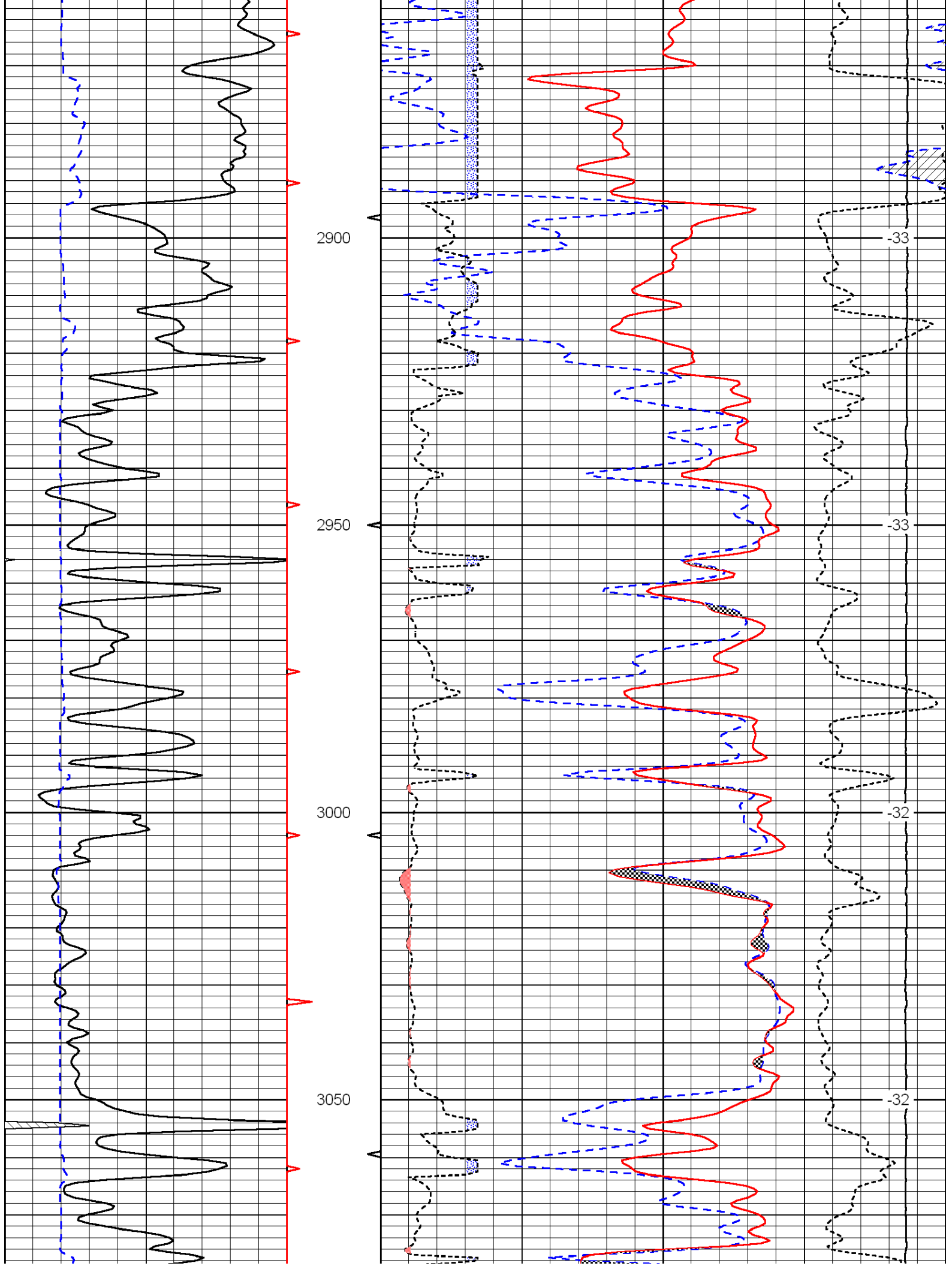


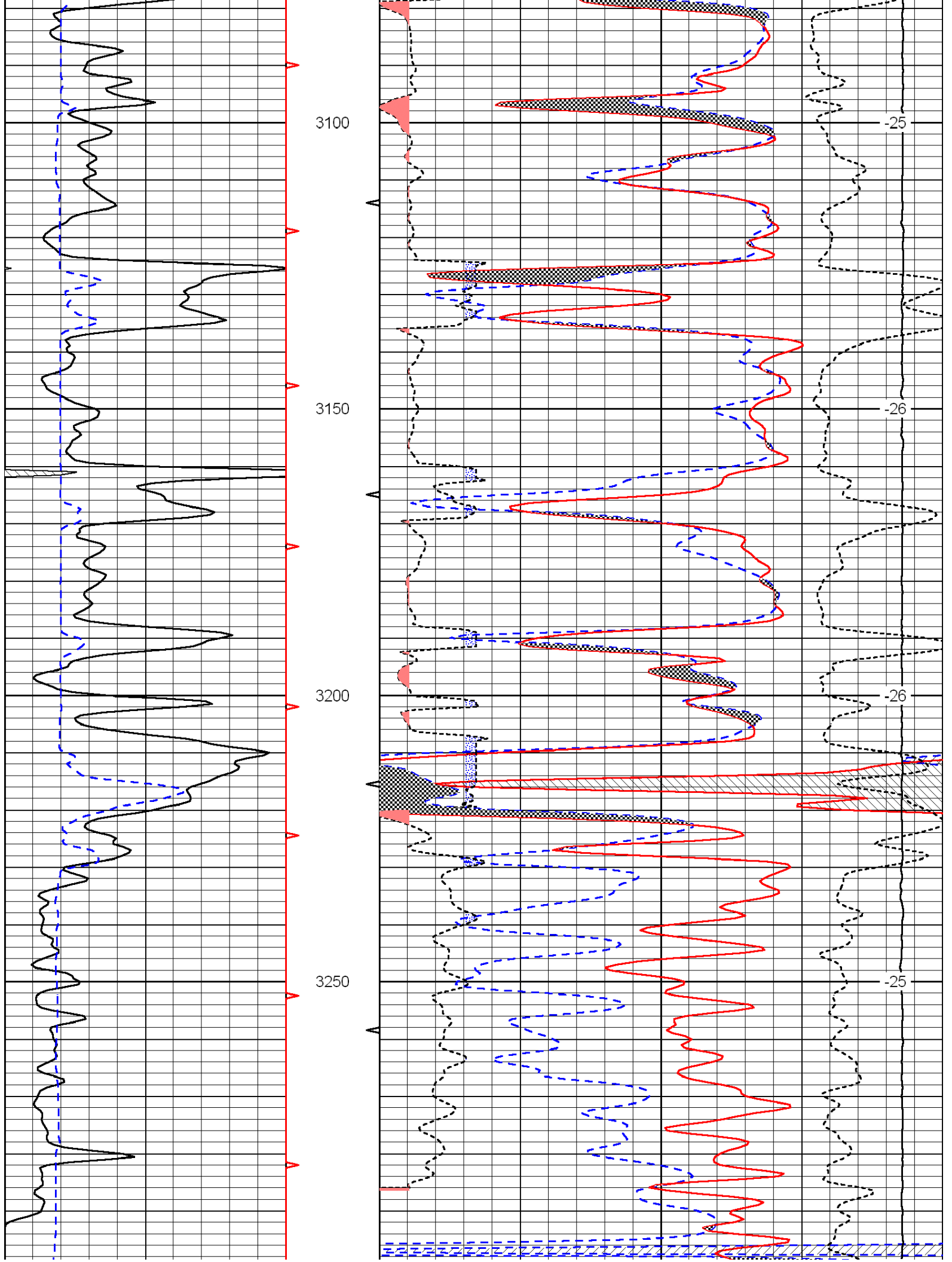


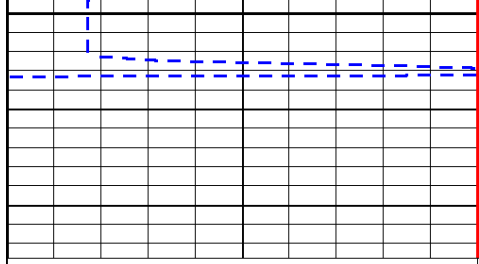
Database File: c:\warrior\data\rama_proffitt no. 5-8\rama_proffitt_5-8hd.db
 Dataset Pathname: dil/ramastck
 Presentation Format: cndlspec
 Dataset Creation: Mon Oct 31 20:38:20 2011
 Charted by: Depth in Feet scaled 1:240







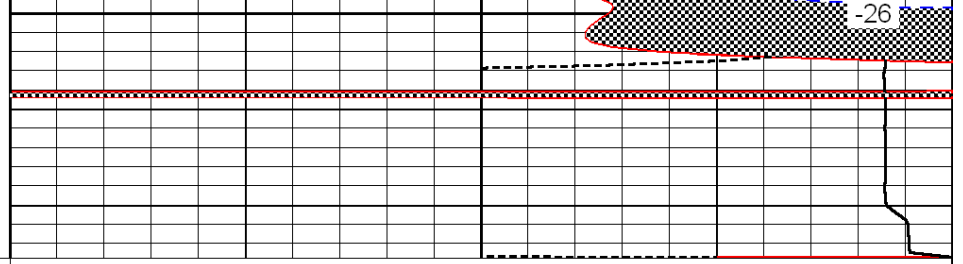




0 Gamma Ray 150

6 Caliper (GAPI) 16

3300



30 Compensated Neutron (Limestone) -10

30 Compensated Density (Limestone) -10

2.625 DGA 3.425 -0.25 Correction 0.25

15000 Line Tension 0

LSPD