

Company: EMPIRE ENERGY E&P LLC.
Well: ESFELD #9
Field: KRAFT-PRUSA
County: BARTON
State: KANSAS

Location: SEC: 28 TWP: 16S RGE: 11W
Other Services: SW-SW-NE-NE 1100' FNL & 1220' FSL

Permanet Datum: GROUND LEVEL Elevation: 1904
Log Measured From: KELLY BUSHING 7' AGL
Drilling Measured From: KELLY BUSHING
Date: AUGUST 18, 2011
Run Number: 016
Depth Logger: 3382
Bottom Logged Interval: 3381 - 2200

Fluid Level: WATER
Top Log Interval: WATER
Density / Viscosity: 110F
Max. Recorded Temp: 2310
Estimated Cement Top: 2310

Time Used: 10:00
Line Used: 1000
Equipment Number: PT-08
Recorded By: HAYS
Witnessed By: JEREMY SCHNEIDER
MR. RICK POPP

Run Number: ONE
TWO
7.875
7.92
3480

Bottom Record From: 00
To: 792
Size: 7/8
Weight: 3480

Casing Record From: 00
To: 792
Size: 8.563
Weight: 23#

Stringer Stems: 00
Production String: 5.172
Liner: 14#

Timing Record From: 00
To: 792
Bottom: 3438

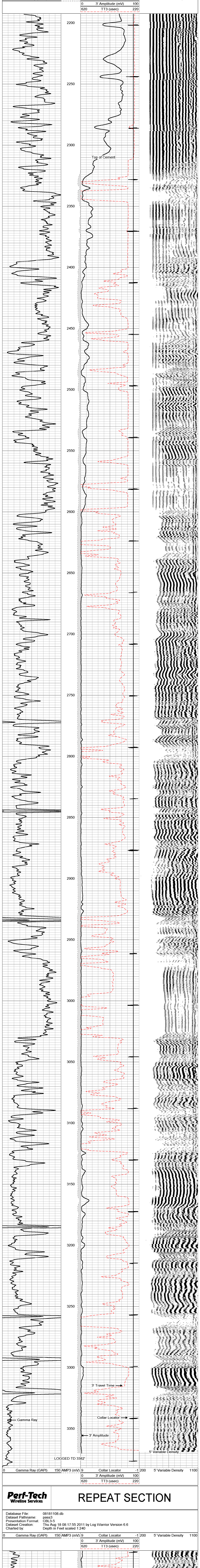
<<< Fold Here >>>

All interpretations are opinions based on inferences from electrical or other measurements and we cannot and do not guarantee the accuracy or correctness of any interpretation, and we shall not, except in the case of gross or willful negligence on our part, be liable or responsible for any loss, costs, damages, or expenses incurred or sustained by anyone resulting from any interpretation made by any of our officers, agents or employees. These interpretations are also subject to our general terms and conditions set out in our current Price Schedule.

Comments

Perf-Tech Wireline Services **MAIN PASS**

Database File: 08181108.db
Dataset Pathname: pass4
Presentation Format: CBL3-5
Dataset Creation: Thu Aug 18 08:23:01 2011 by Log Warrior Version 6.6
Charted by: Depth in Feet scaled 1:240



Perf-Tech Wireline Services **REPEAT SECTION**

Database File: 08181108.db
Dataset Pathname: pass3
Presentation Format: CBL3-5
Dataset Creation: Thu Aug 18 08:17:55 2011 by Log Warrior Version 6.6
Charted by: Depth in Feet scaled 1:240

