



DIGITAL LOG (785) 625-3858

Dual Induction Log

API No.	15-009-25,582-00-00	
Company	Empire Energy E&P LLC.	
Well	Esfeld No. 9	
Field	Kraft-Prusa	
County	Barton	State Kansas
Location	SW SW NE NE 1100' FNL & 1220' FSL	
Sec: 28	Twp: 18 S	Rge: 11 W
Other Services	CNL/CDL MEL/BHCS	

Permanent Datum	Ground Level	Elevation 1904
Log Measured From	Kelly Bushing	7 Ft. Above Perm. Datum
Drilling Measured From	Kelly Bushing	
Date	8/11/2011	
Run Number	One	
Depth Driller	3430	
Depth Logger	3430	
Bottom Logged Interval	3429	
Top Log Interval	00	
Casing Driller	8.625 @ 752	
Casing Logger	751	
Bit Size	7.875	
Type Fluid in Hole	Chemical	
Salinity, ppm CL	7800	
Density / Viscosity	9.4	53
pH / Fluid Loss	9.0	10.2
Source of Sample	Flowline	
Rm @ Meas. Temp	.37	@ 82
Rmf @ Meas. Temp	.28	@ 82
Rmc @ Meas. Temp	.50	@ 82
Source of Rmf / Rmc	Charts	
Rm @ BHT	.28	@ 110
Operating Rig Time	5 1/2 Hours	
Max Rec. Temp. F	110	
Equipment Number	10	
Location	Hays	
Recorded By	D. Kerr	
Witnessed By	Kurt Talbott	

<<< Fold Here >>>

All interpretations are opinions based on inferences from electrical or other measurements and we cannot and do not guarantee the accuracy or correctness of any interpretation, and we shall not, except in the case of gross or willful negligence on our part, be liable or responsible for any loss, costs, damages, or expenses incurred or sustained by anyone resulting from any interpretation made by any of our officers, agents or employees. These interpretations are also subject to our general terms and conditions set out in our current Price Schedule.

Comments

Thank you for using Log-Tech, Inc.
 (785) 625-3858
 Beaver KS, 7 East to 130th Ave.
 1/4 South, West Into

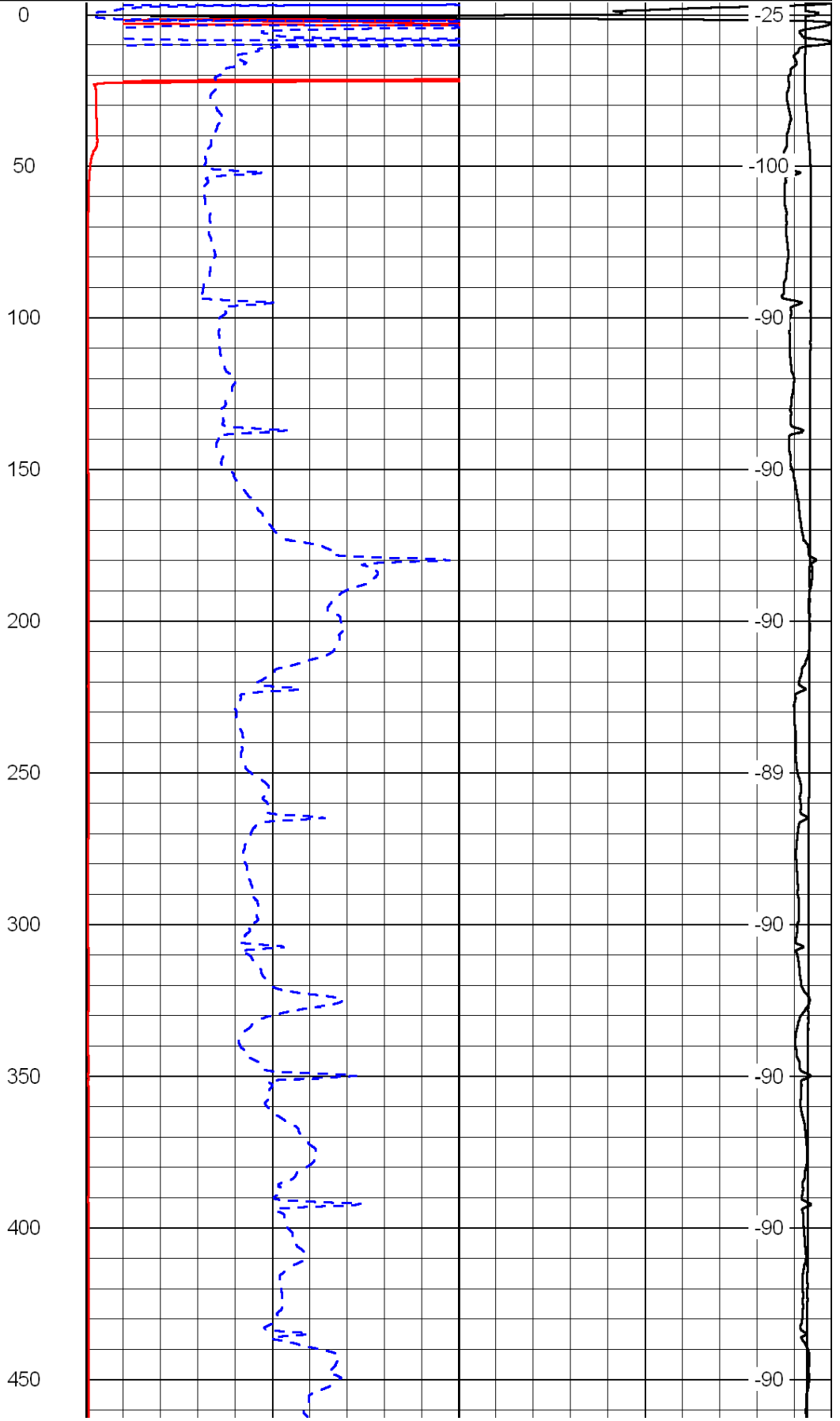
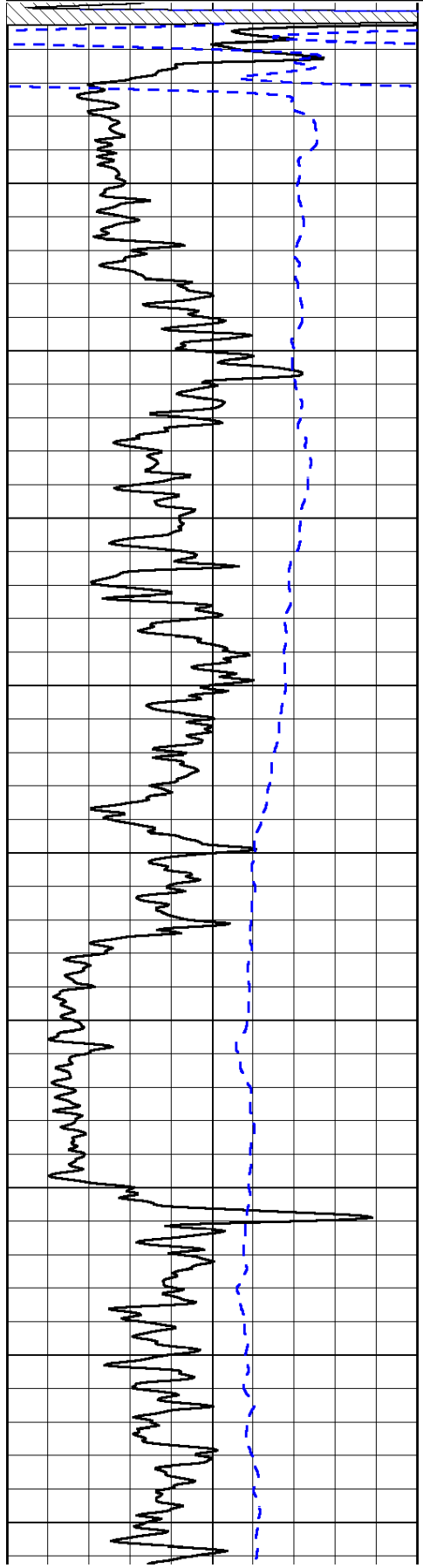
0	Gamma Ray	150
-200	SP (mV)	0

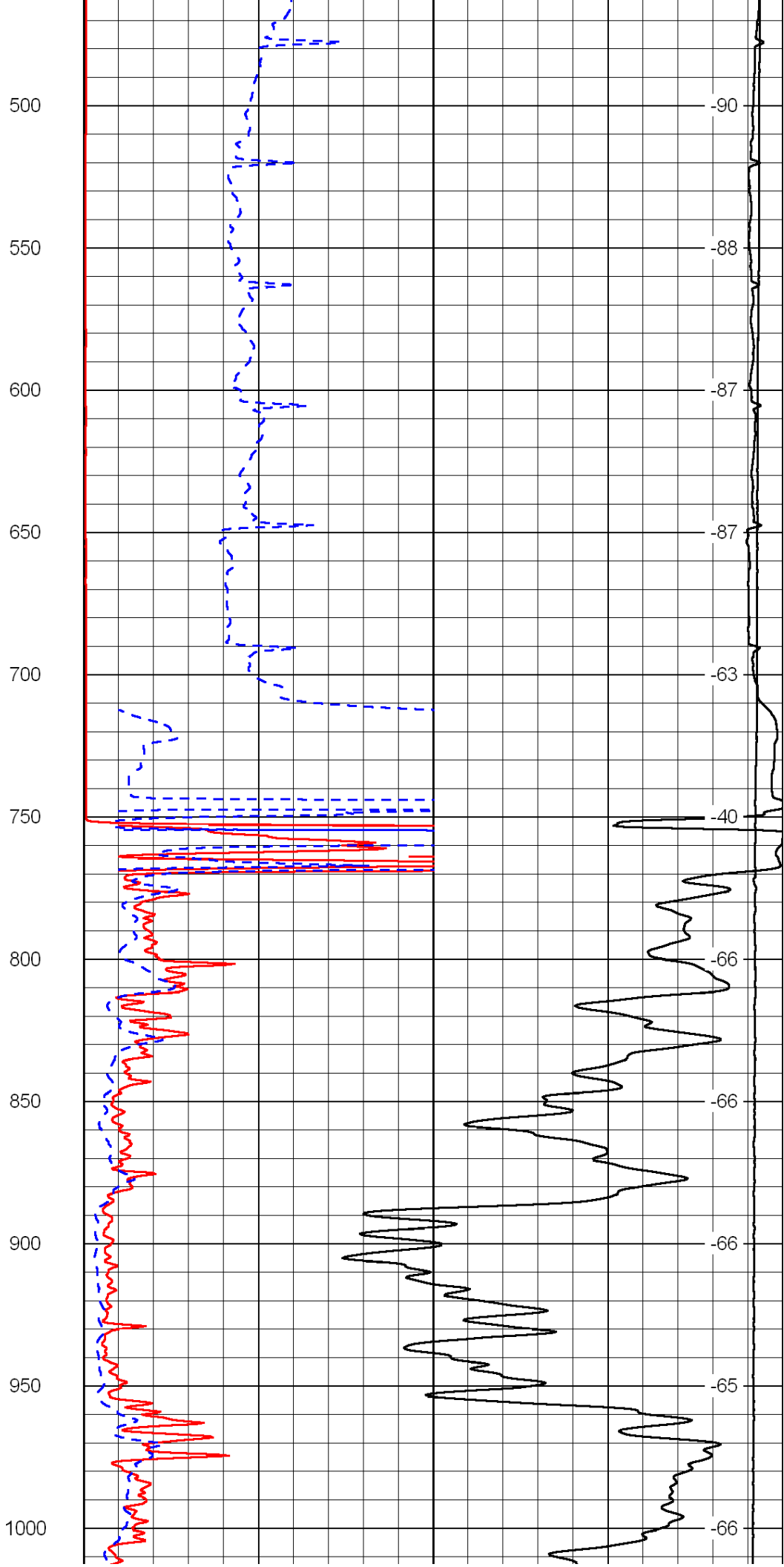
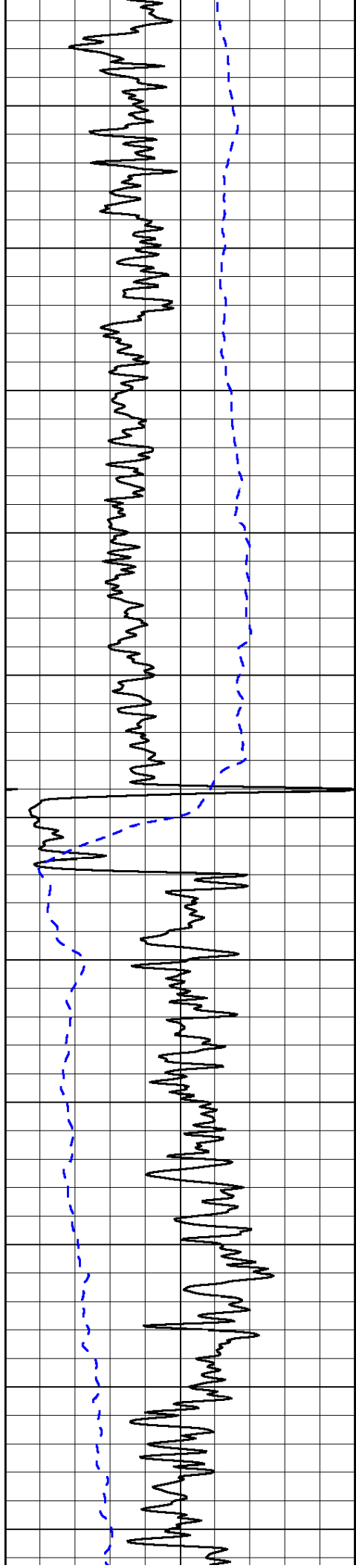
0	Shallow Resistivity	50
0	Deep Resistivity	50

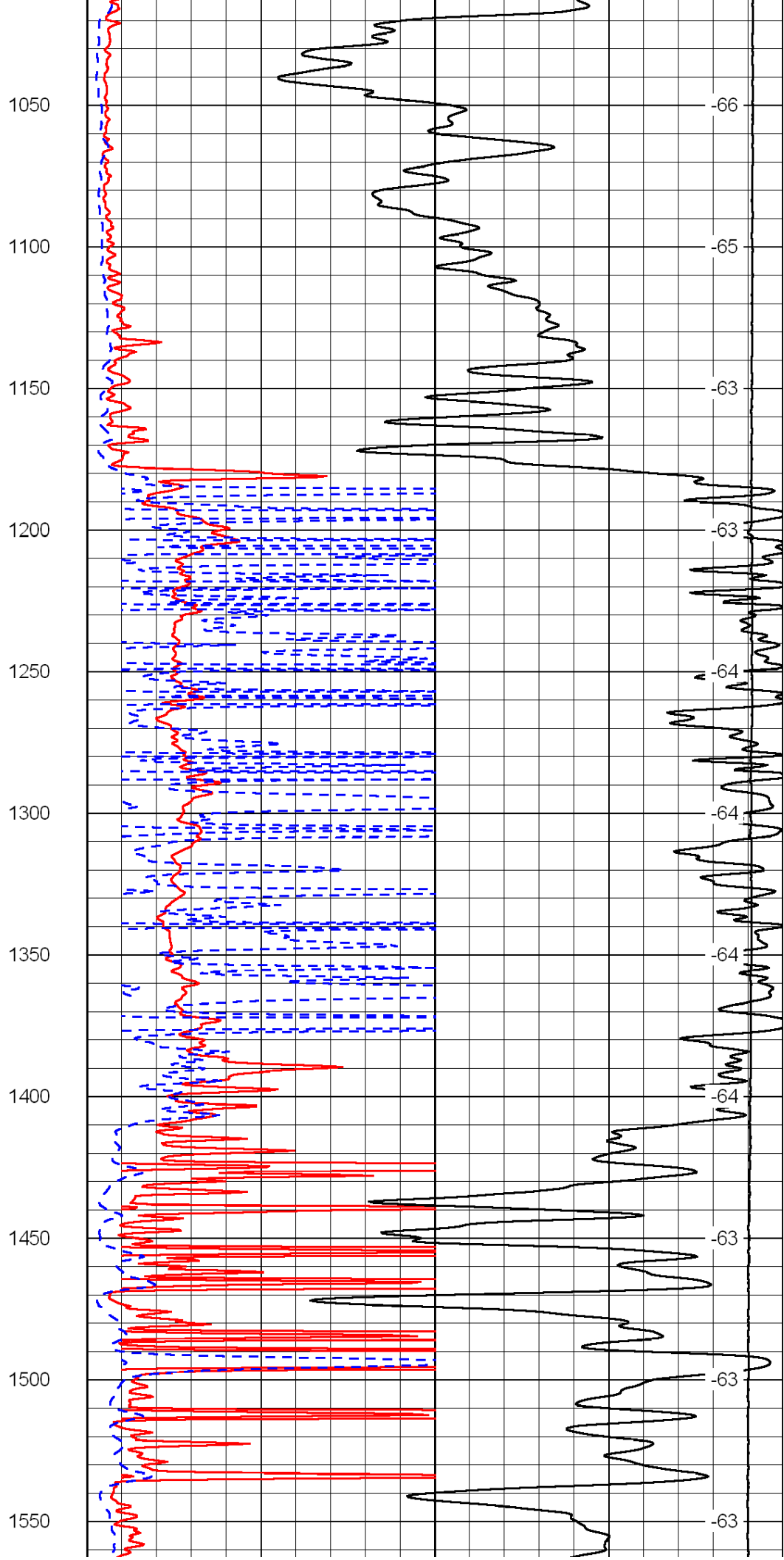
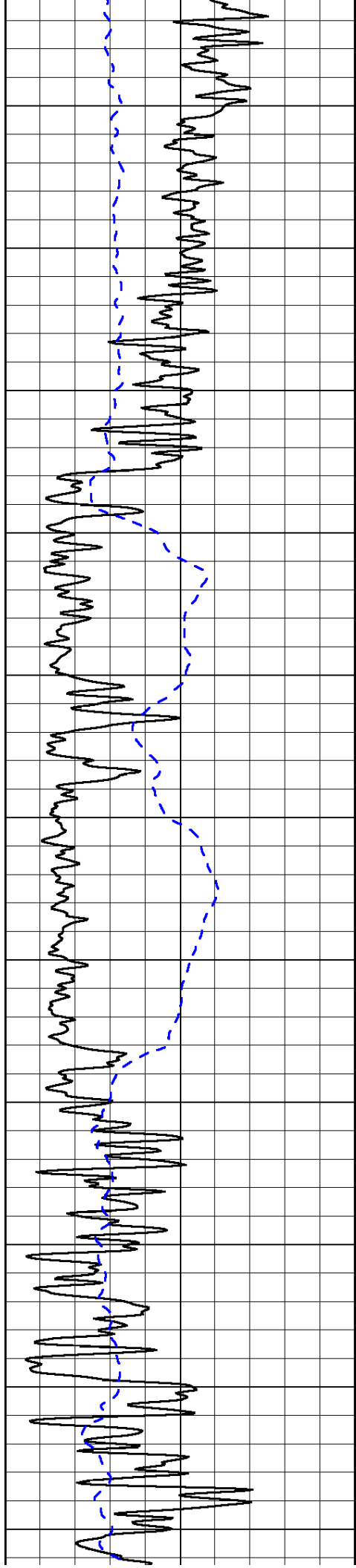
LSPD

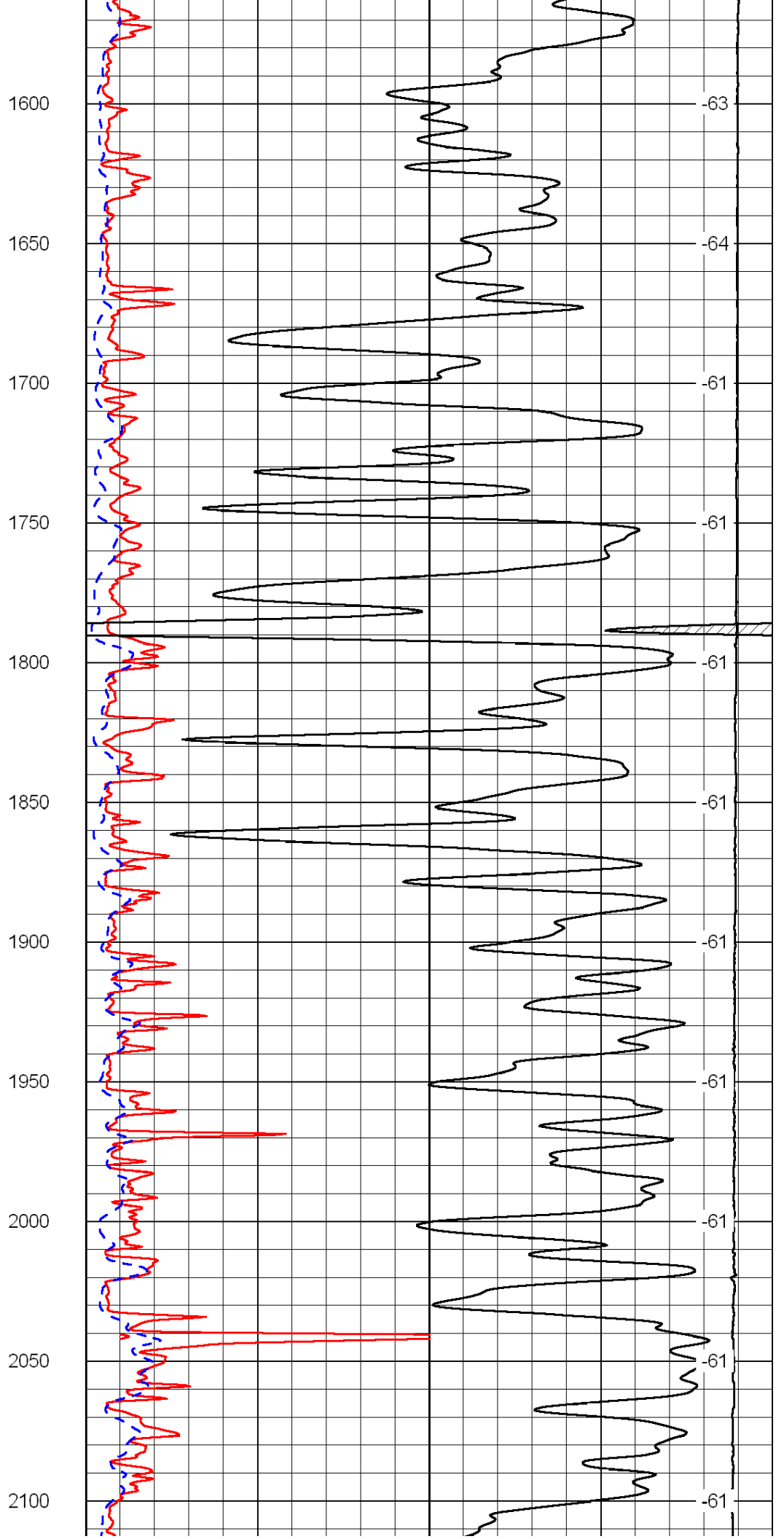
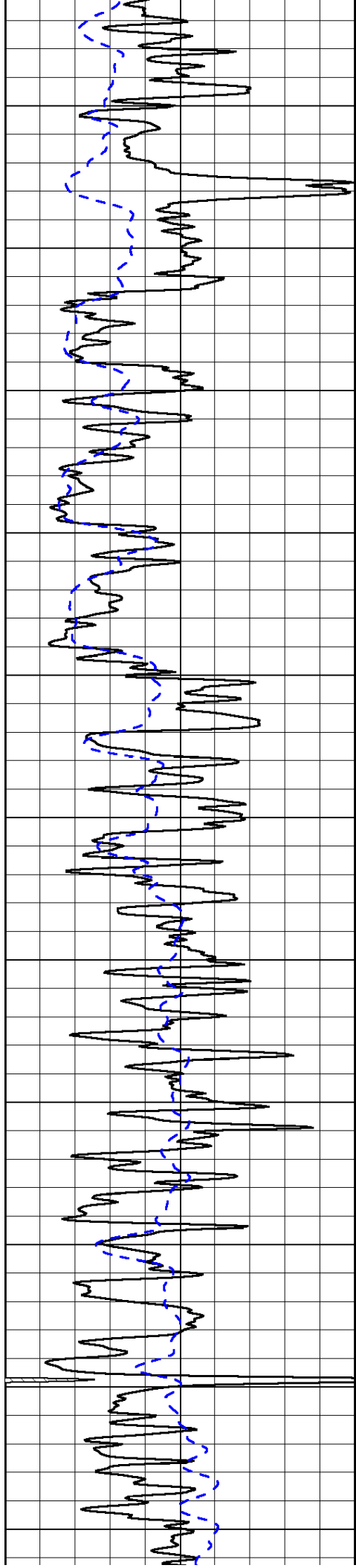
1000	Conductivity	0
15000	Line Tension	0

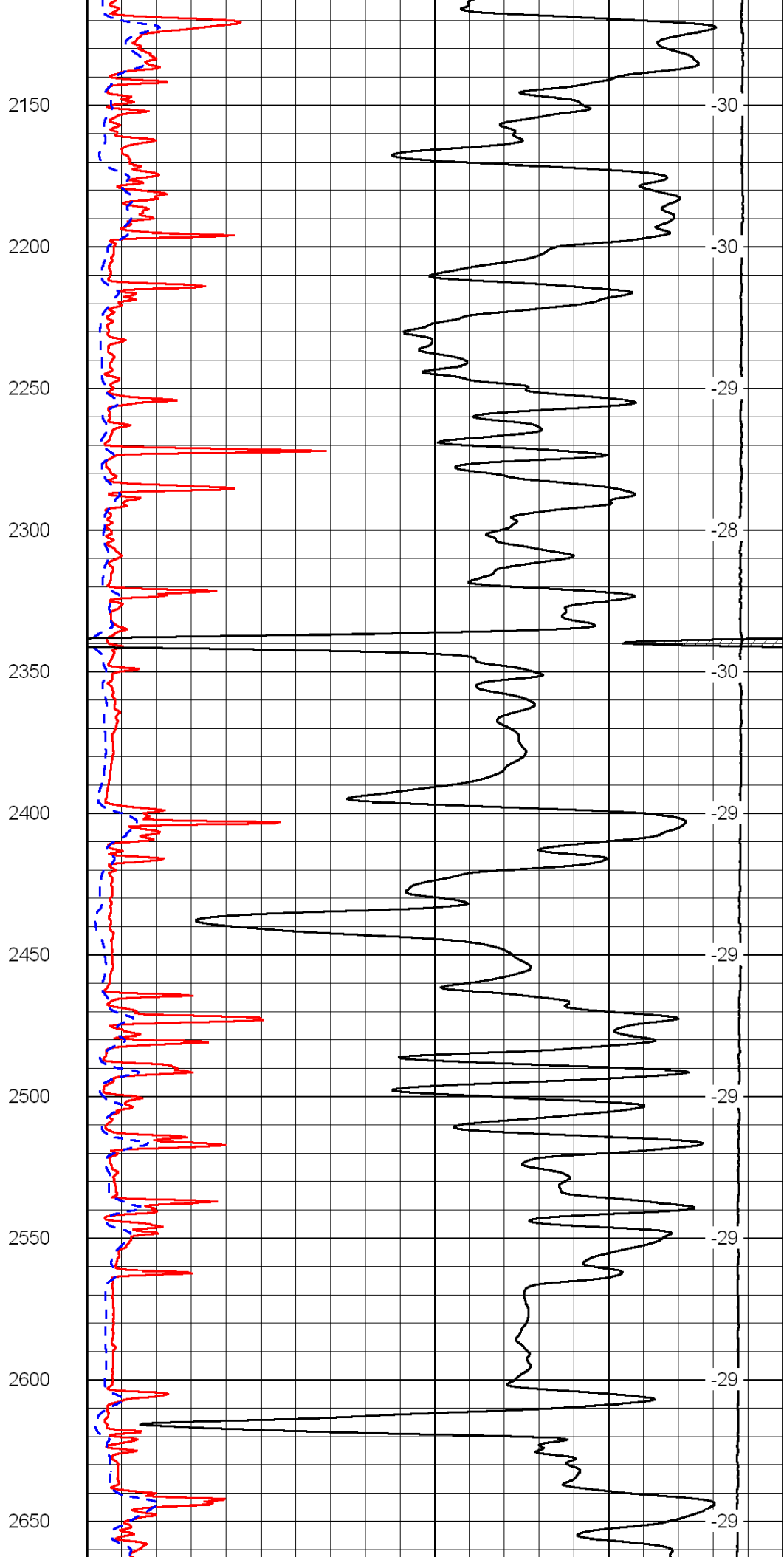
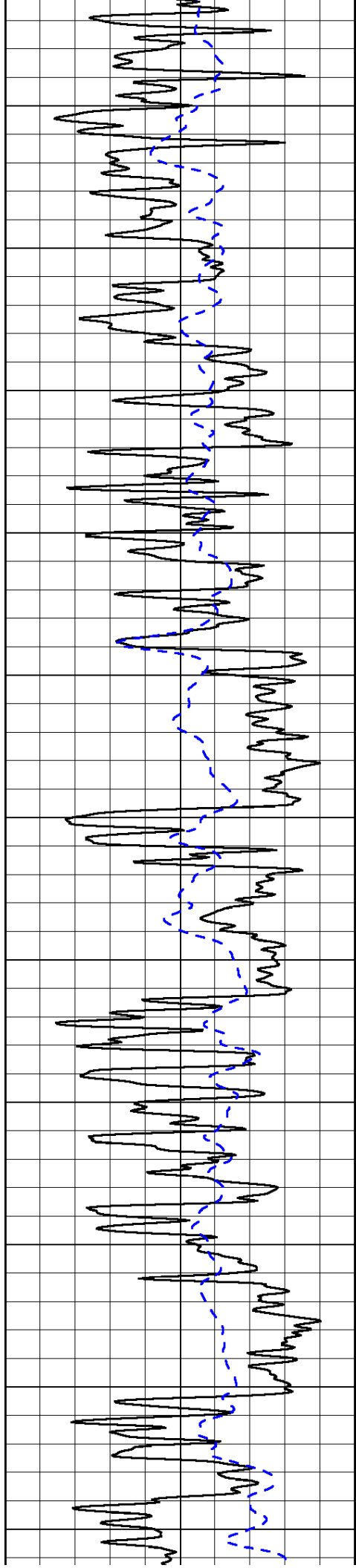
50	Shallow Resistivity	500
50	Deep Resistivity	500

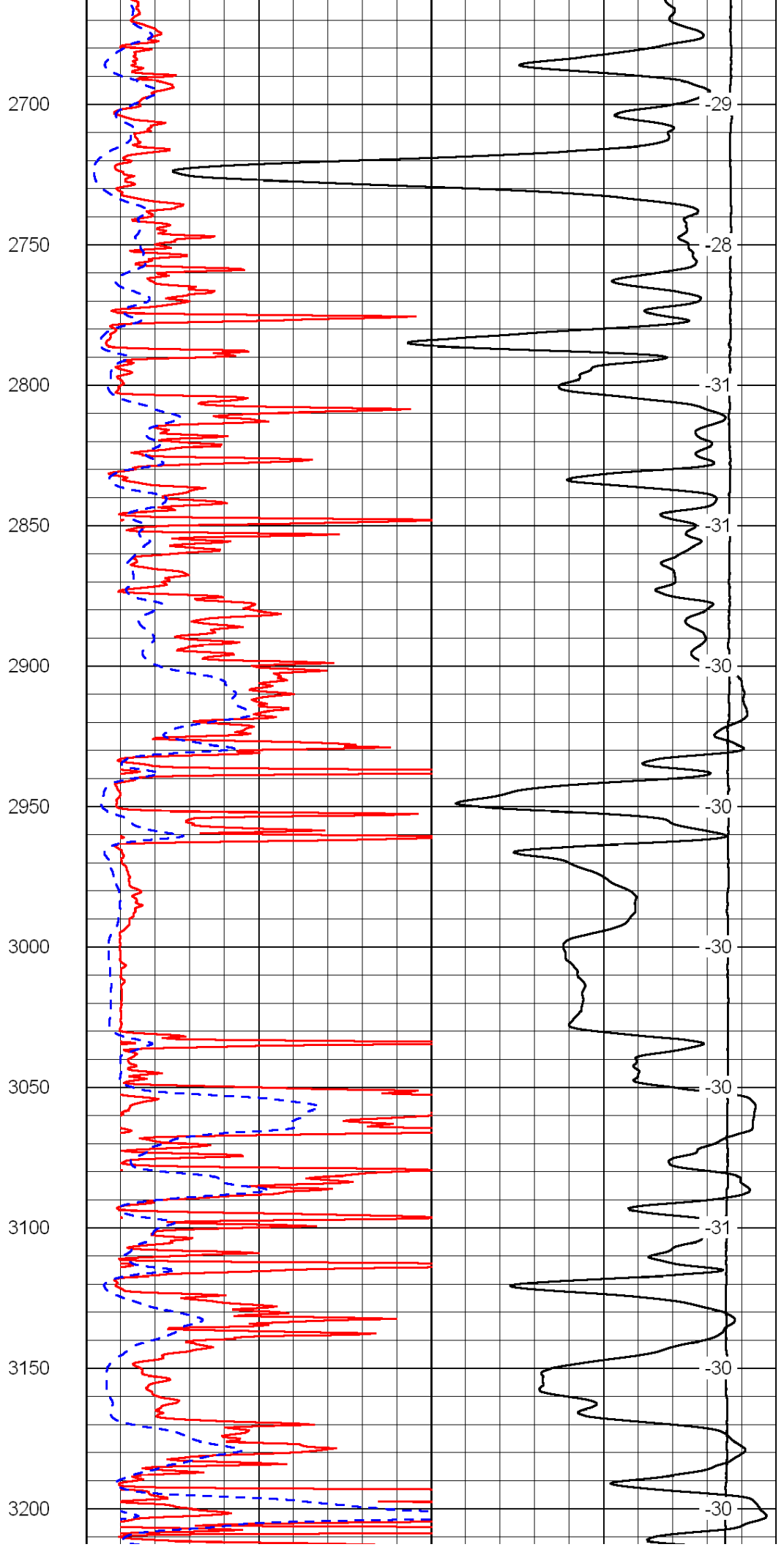
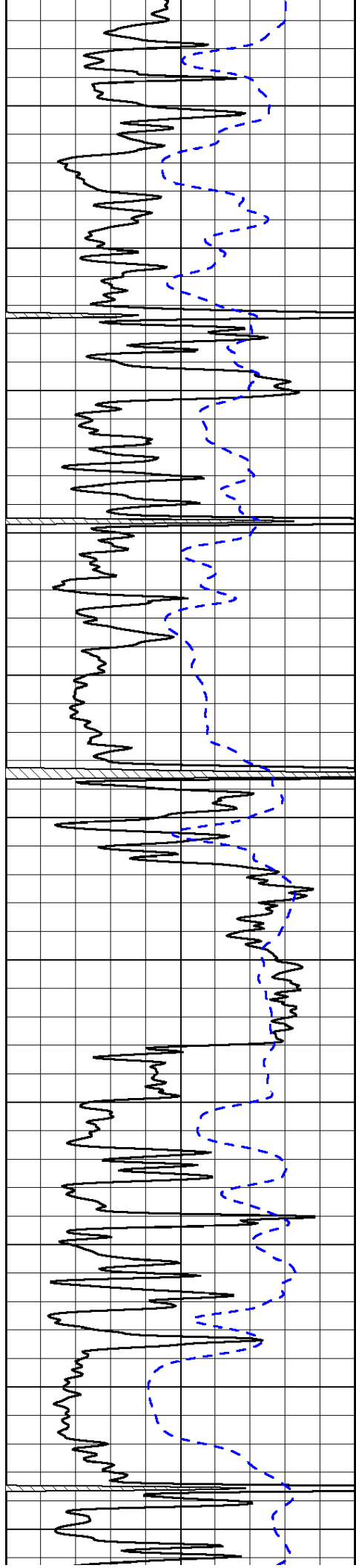


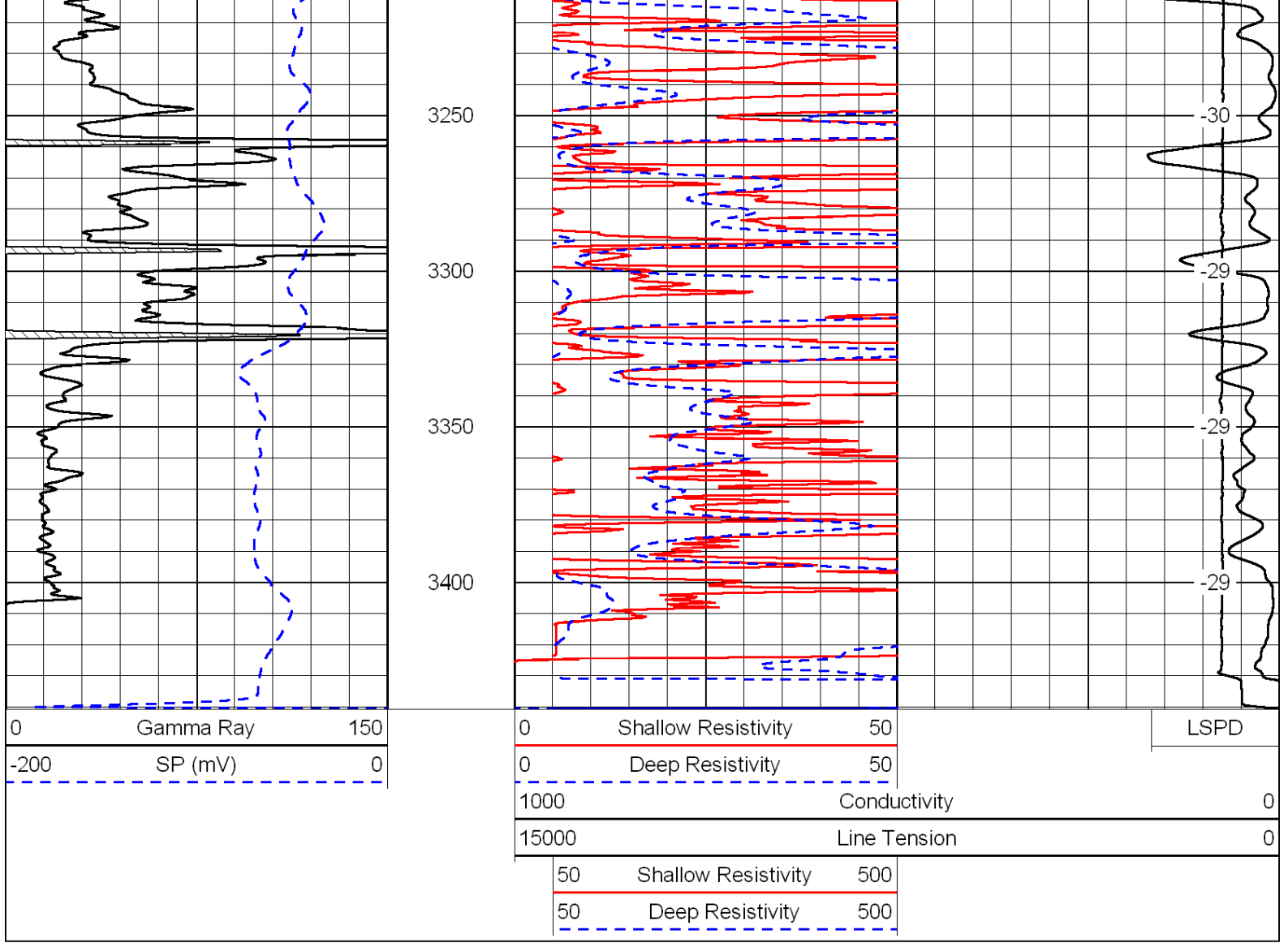




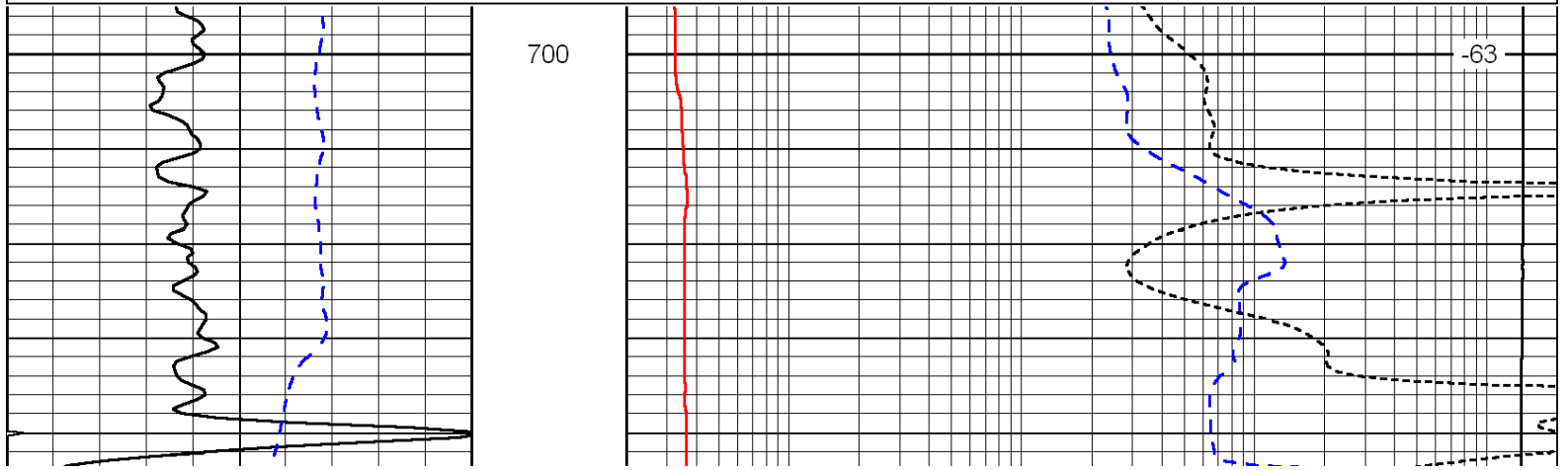
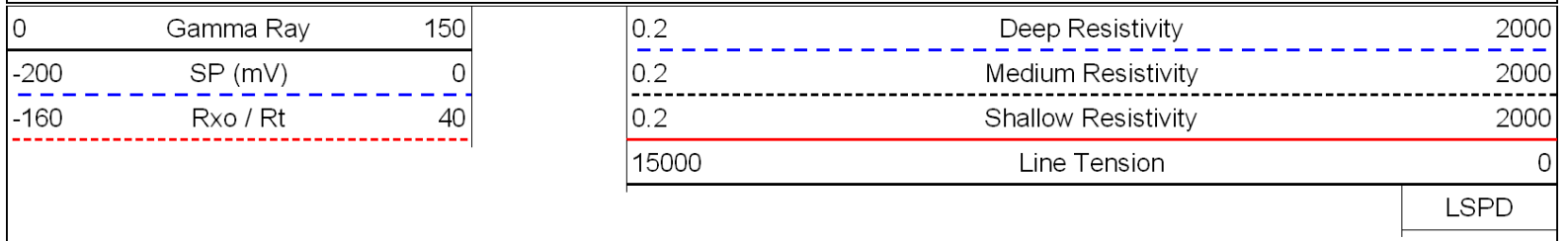


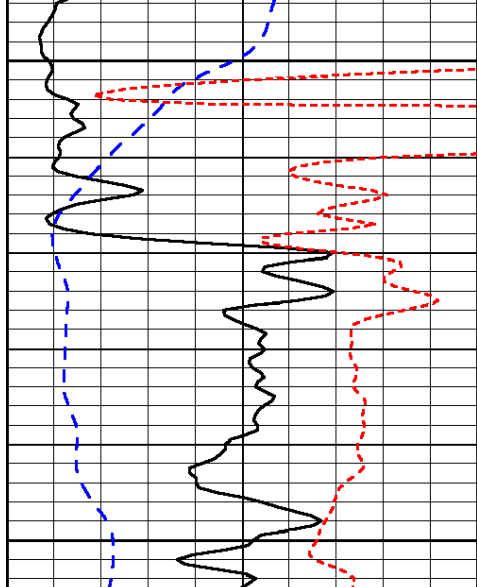




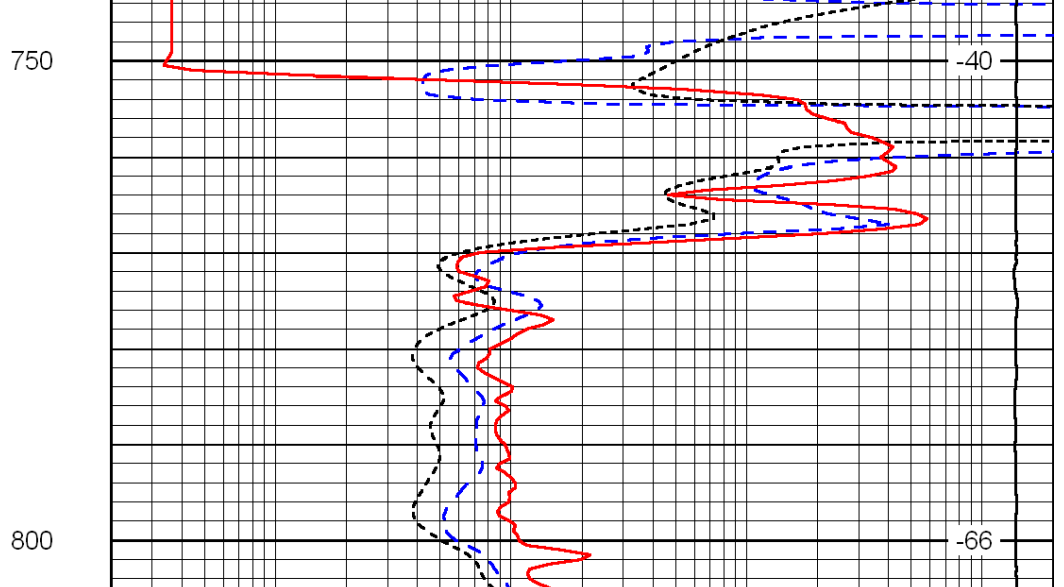


Database File: c:\warrior\data\empire energy_esfeld no. 9\empire_esfeld_9hd.db
 Dataset Pathname: dil/empstk
 Presentation Format: dil
 Dataset Creation: Thu Aug 11 15:58:31 2011
 Charted by: Depth in Feet scaled 1:240





0	Gamma Ray	150
-200	SP (mV)	0
-160	Rxo / Rt	40



0.2	Deep Resistivity	2000
0.2	Medium Resistivity	2000
0.2	Shallow Resistivity	2000
15000	Line Tension	0

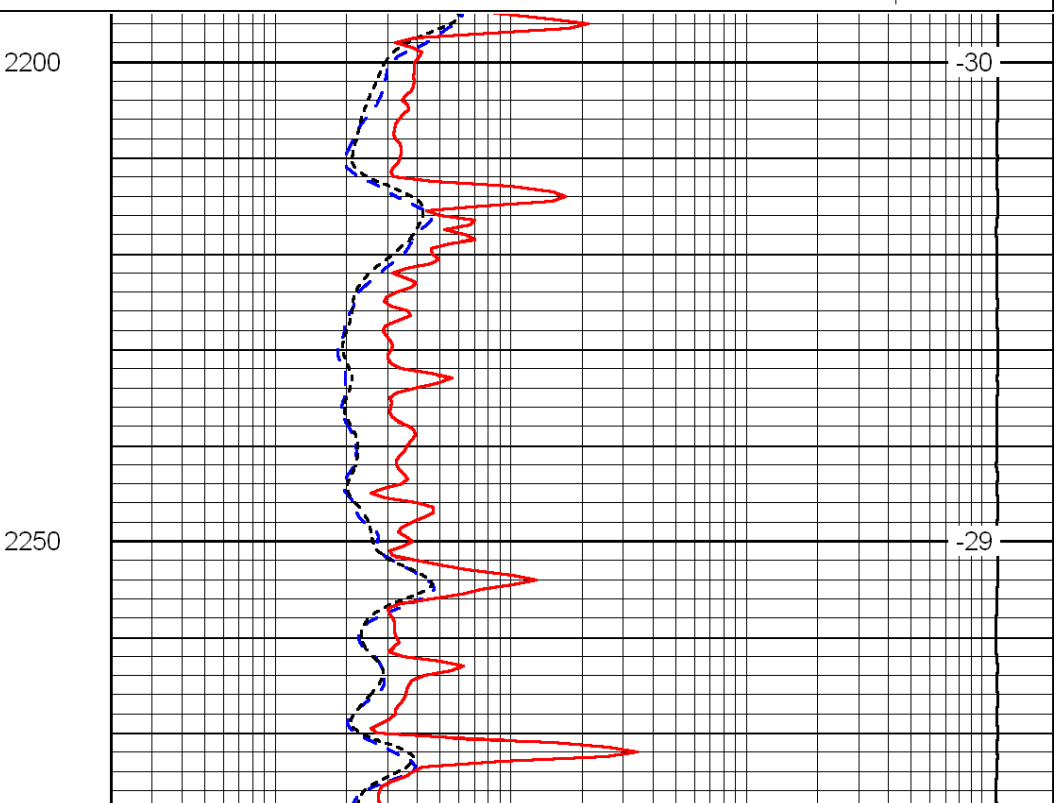
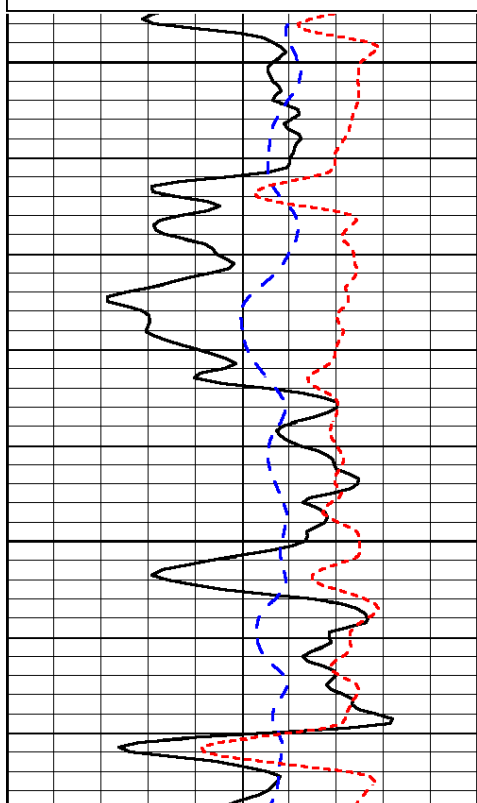
LSPD

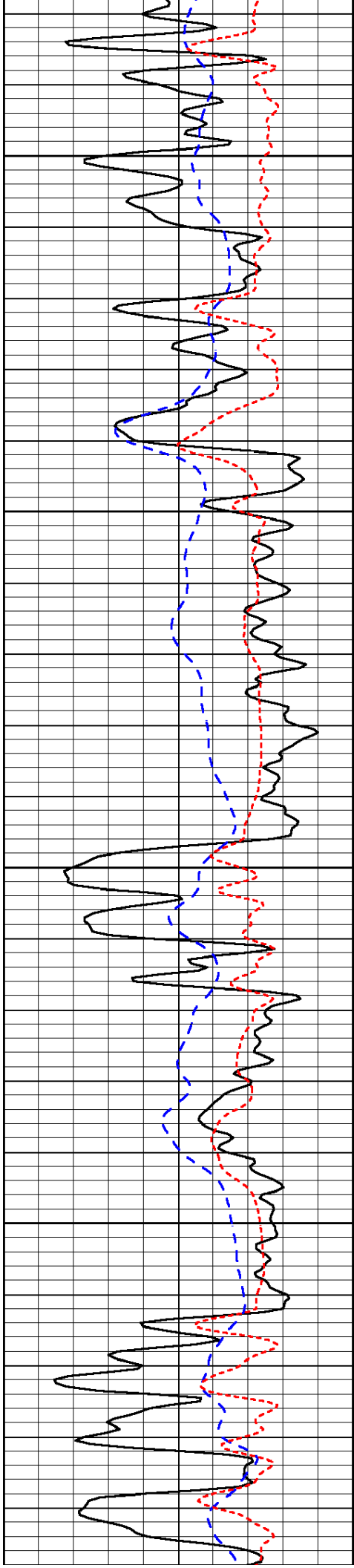
Database File: c:\warrior\data\empire energy_esfeld no. 9\empire_esfeld_9hd.db
 Dataset Pathname: dil/empstk
 Presentation Format: dil
 Dataset Creation: Thu Aug 11 15:58:31 2011
 Charted by: Depth in Feet scaled 1:240

0	Gamma Ray	150
-200	SP (mV)	0
-160	Rxo / Rt	40

0.2	Deep Resistivity	2000
0.2	Medium Resistivity	2000
0.2	Shallow Resistivity	2000
15000	Line Tension	0

LSPD



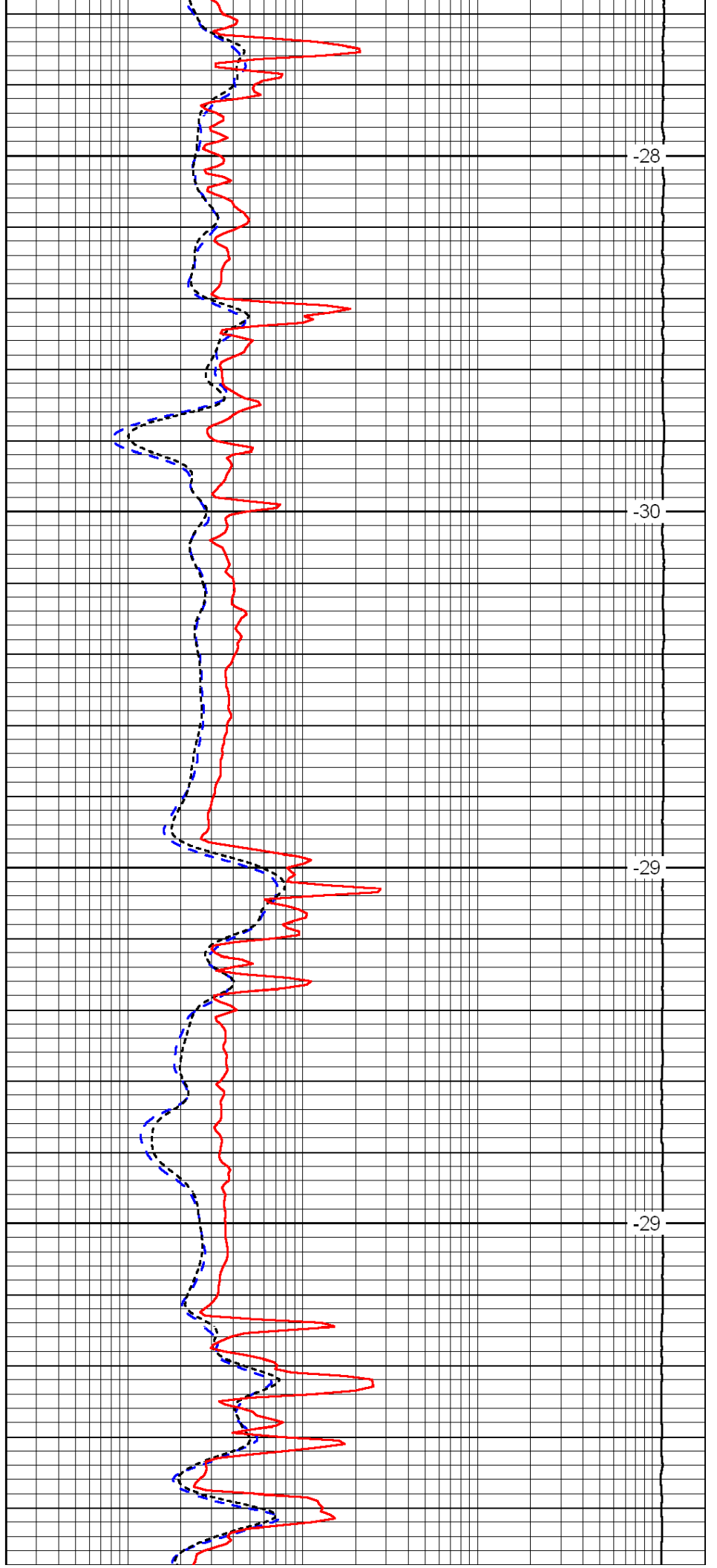


2300

2350

2400

2450

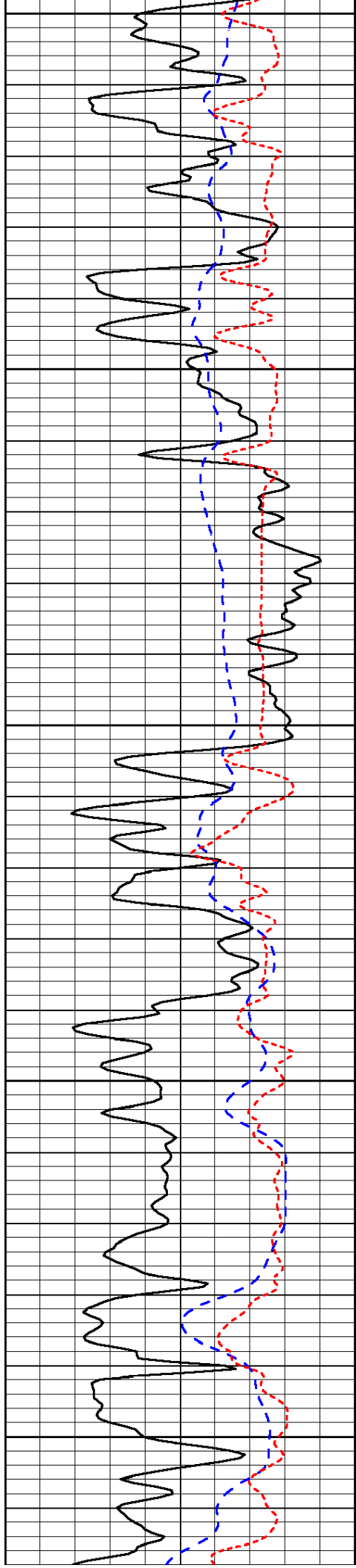


-28

-30

-29

-29



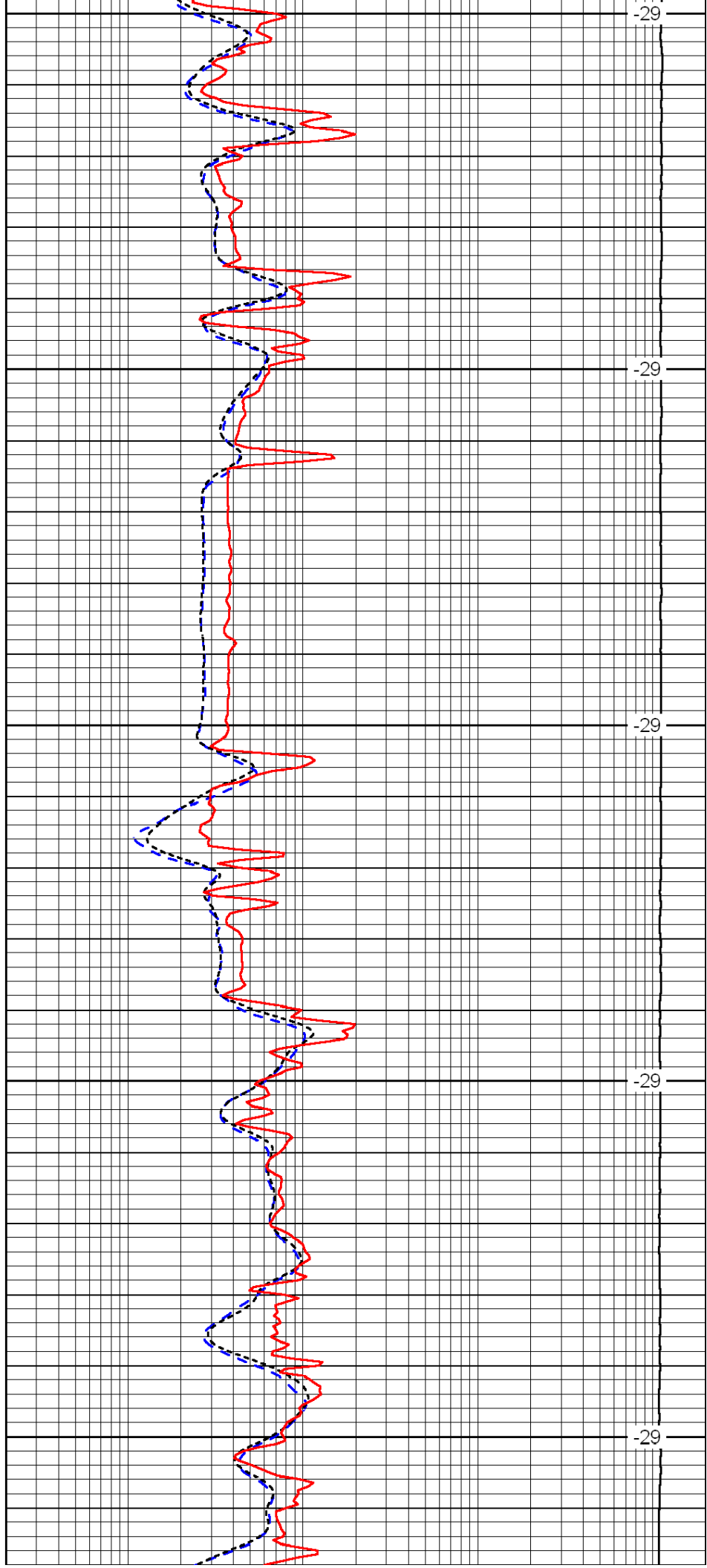
2500

2550

2600

2650

2700



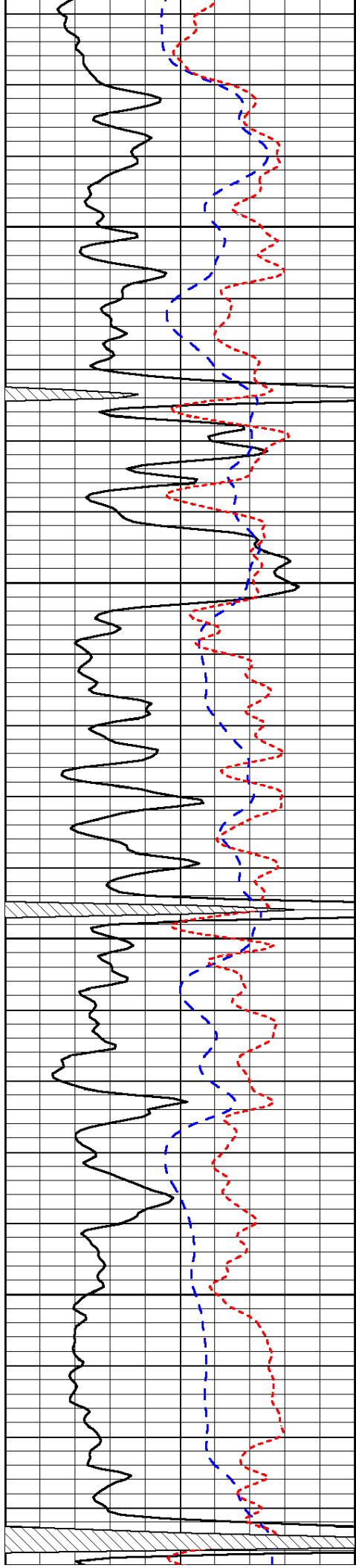
-29

-29

-29

-29

-29

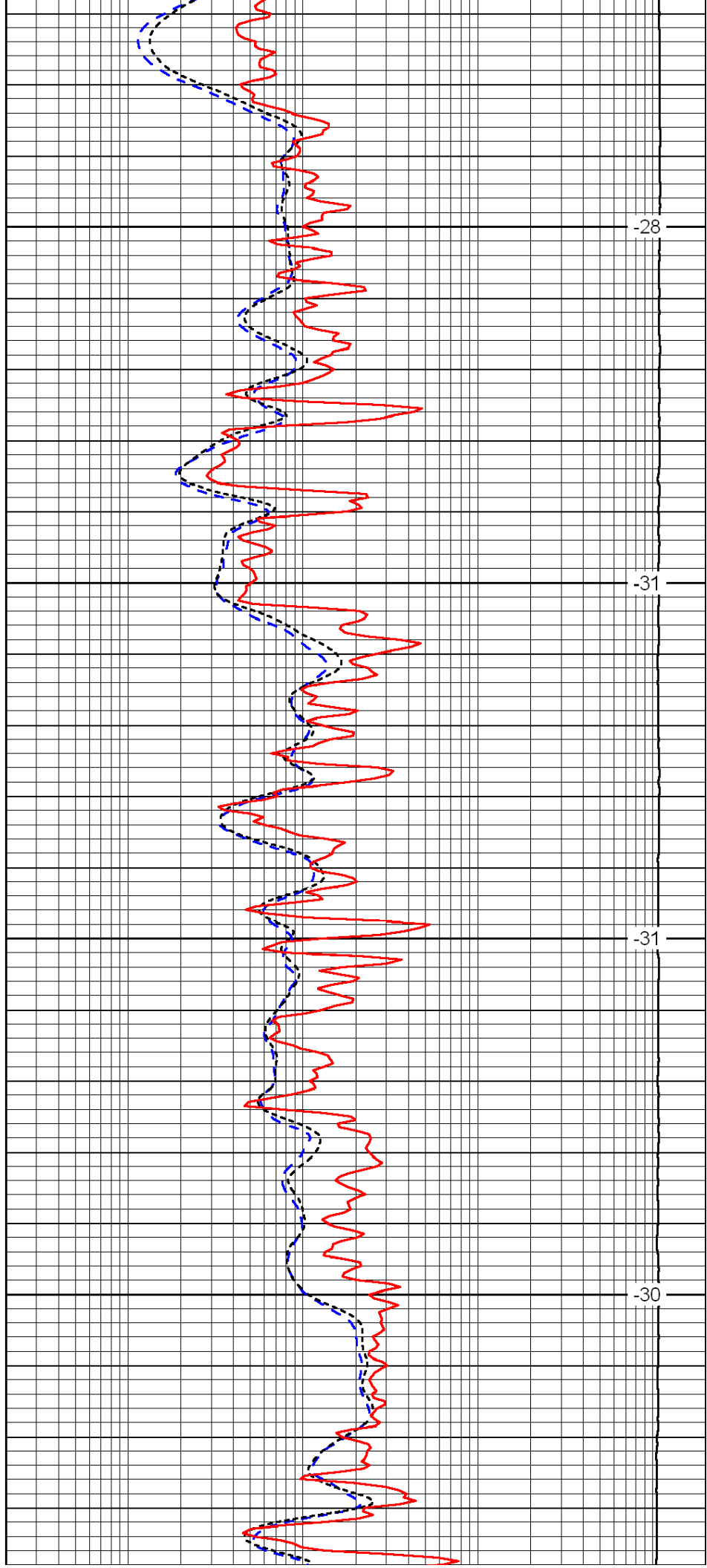


2750

2800

2850

2900

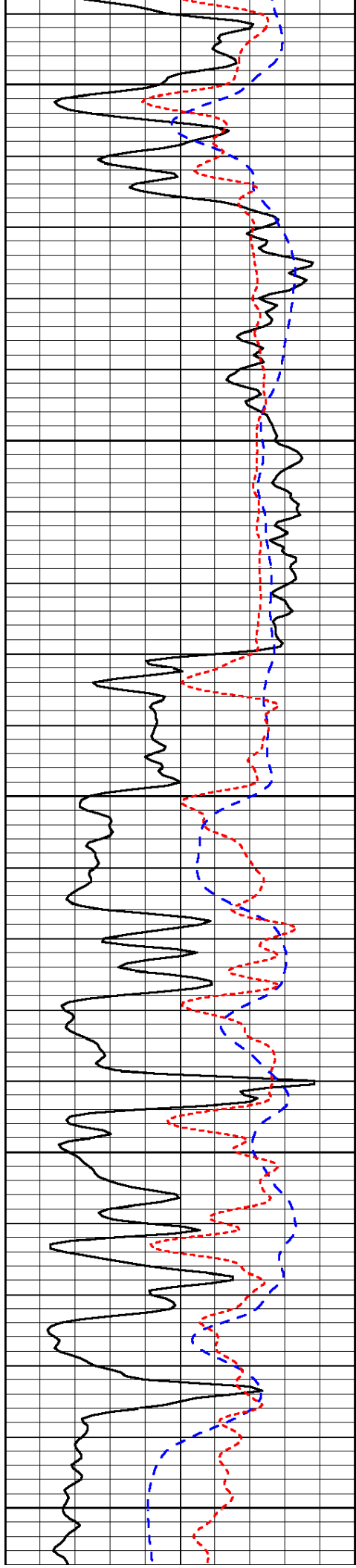


-28

-31

-31

-30



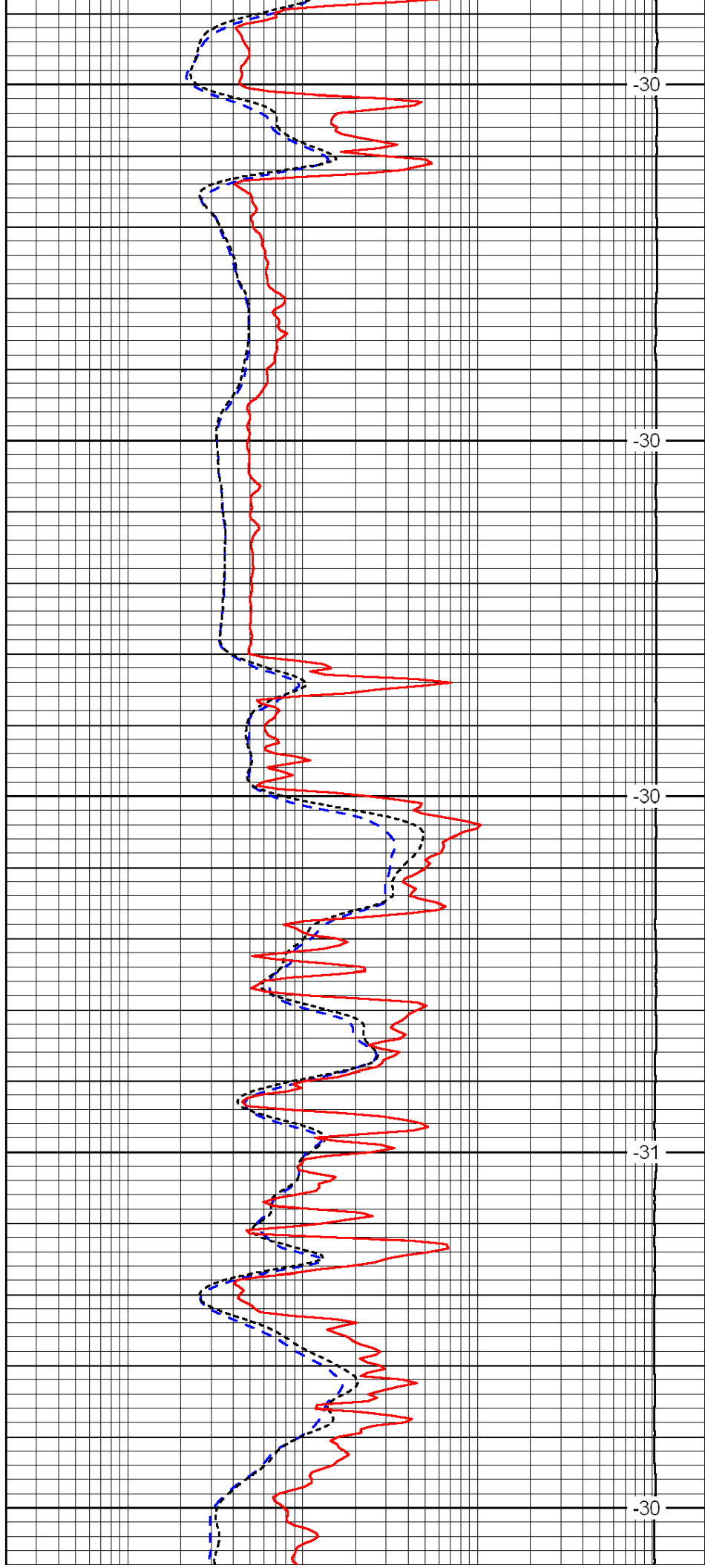
2950

3000

3050

3100

3150



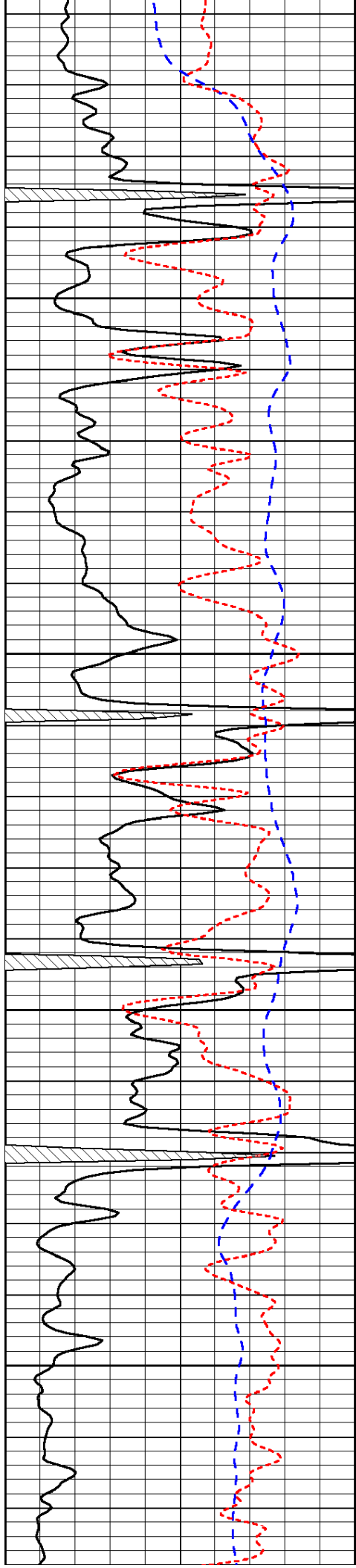
-30

-30

-30

-31

-30

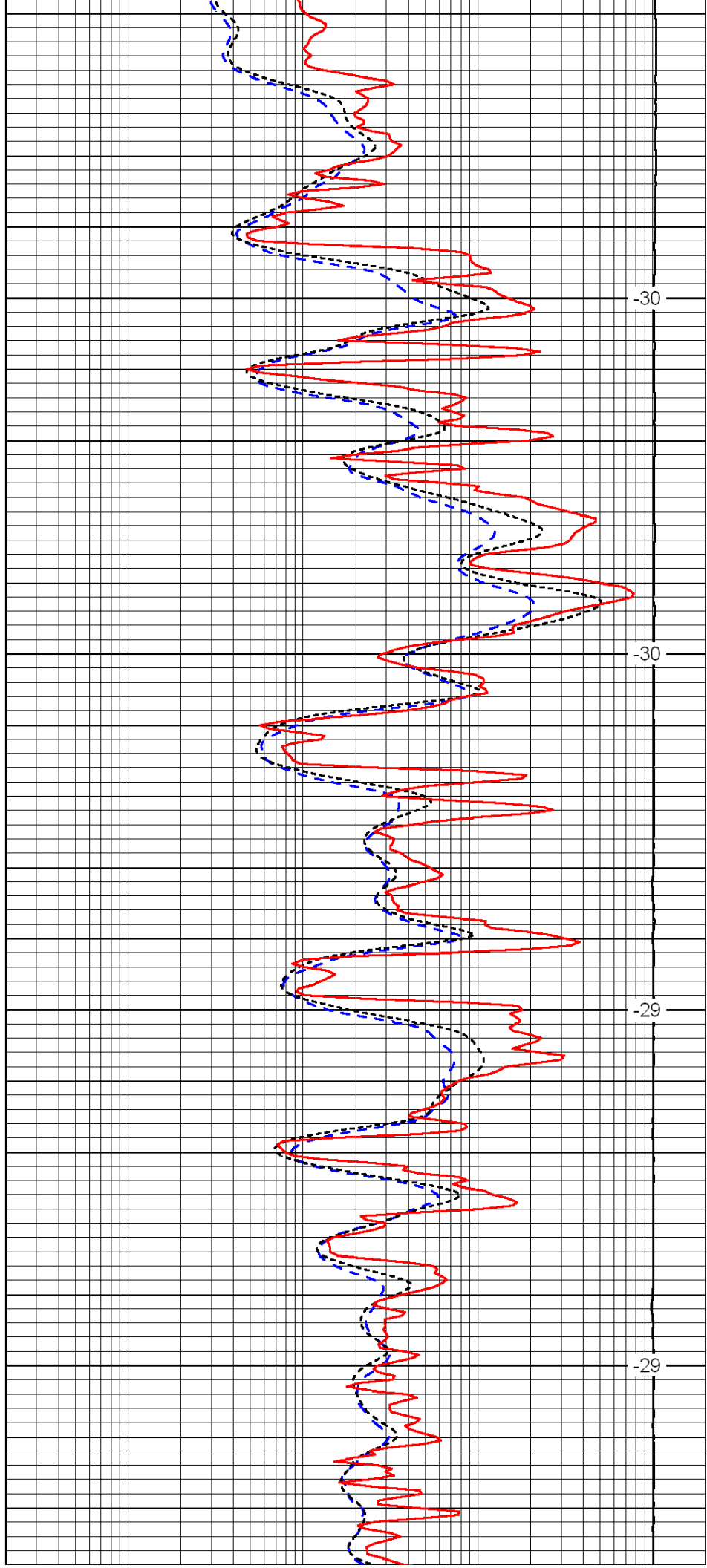


3200

3250

3300

3350

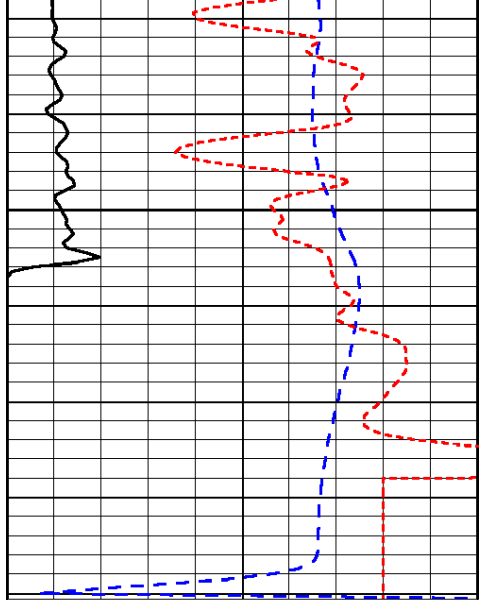


-30

-30

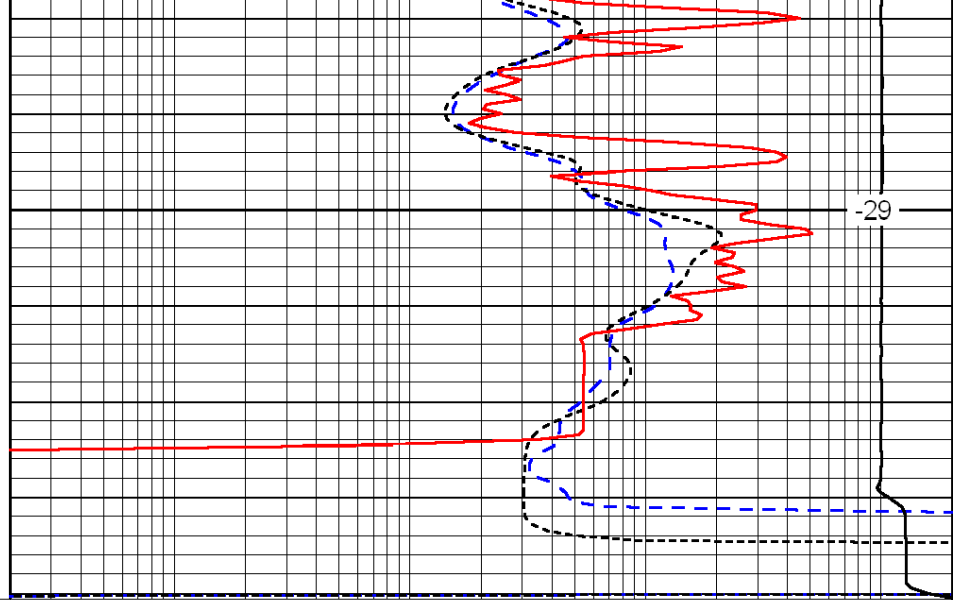
-29

-29



0	Gamma Ray	150
-200	SP (mV)	0
-160	Rxo / Rt	40

3400



-29

0.2	Deep Resistivity	2000
0.2	Medium Resistivity	2000
0.2	Shallow Resistivity	2000
15000	Line Tension	0

LSPD