



DIGITAL LOG (785) 625-3858

Borehole Compensated
Sonic Log

API No. 15-009-25,582-00-00

Company Empire Energy E&P LLC.
Well Esfeld No. 9
Field Kraft-Prusa
County Barton State Kansas

Location SW SW NE NE
1100' FNL & 1220' FSL

Sec: 28 Twp: 16 S Rge: 11 W

Other Services
DIL/MEI
CNL/CDL

Permanent Datum Ground Level Elevation 1904
Log Measured From Kelly Bushing 7 Ft. Above Perm. Datum
Drilling Measured From Kelly Bushing

K.B. 1911
D.F. 1904
G.L. 1904

Date	8/11/2011	
Run Number	Two	
Type Log	BHC Sonic	
Depth Driller	3430	
Depth Logger	3430	
Bottom Logged Interval	3419	
Top Logged Interval	750	
Type Fluid In Hole	Chemical	
Salinity, PPM CL	7800	
Density	9.4	
Level	Full	
Max. Rec. Temp. F	110	
Operating Rig Time	5 1/2 Hours	
Equipment -- Location	10 Hays	
Recorded By	D Kerr	
Witnessed By	Kurt Talbott	

Borehole Record				Casing Record			
Run No.	Bit	From	To	Size	Wgt.	From	To
One	12.25	0	752	8.625	23#	0	752
Two	7.875	752	TD				

<<< Fold Here >>>

All interpretations are opinions based on inferences from electrical or other measurements and we cannot and do not guarantee the accuracy or correctness of any interpretation, and we shall not, except in the case of gross or willful negligence on our part, be liable or responsible for any loss, costs, damages, or expenses incurred or sustained by anyone resulting from any interpretation made by any of our officers, agents or employees. These interpretations are also subject to our general terms and conditions set out in our current Price Schedule.

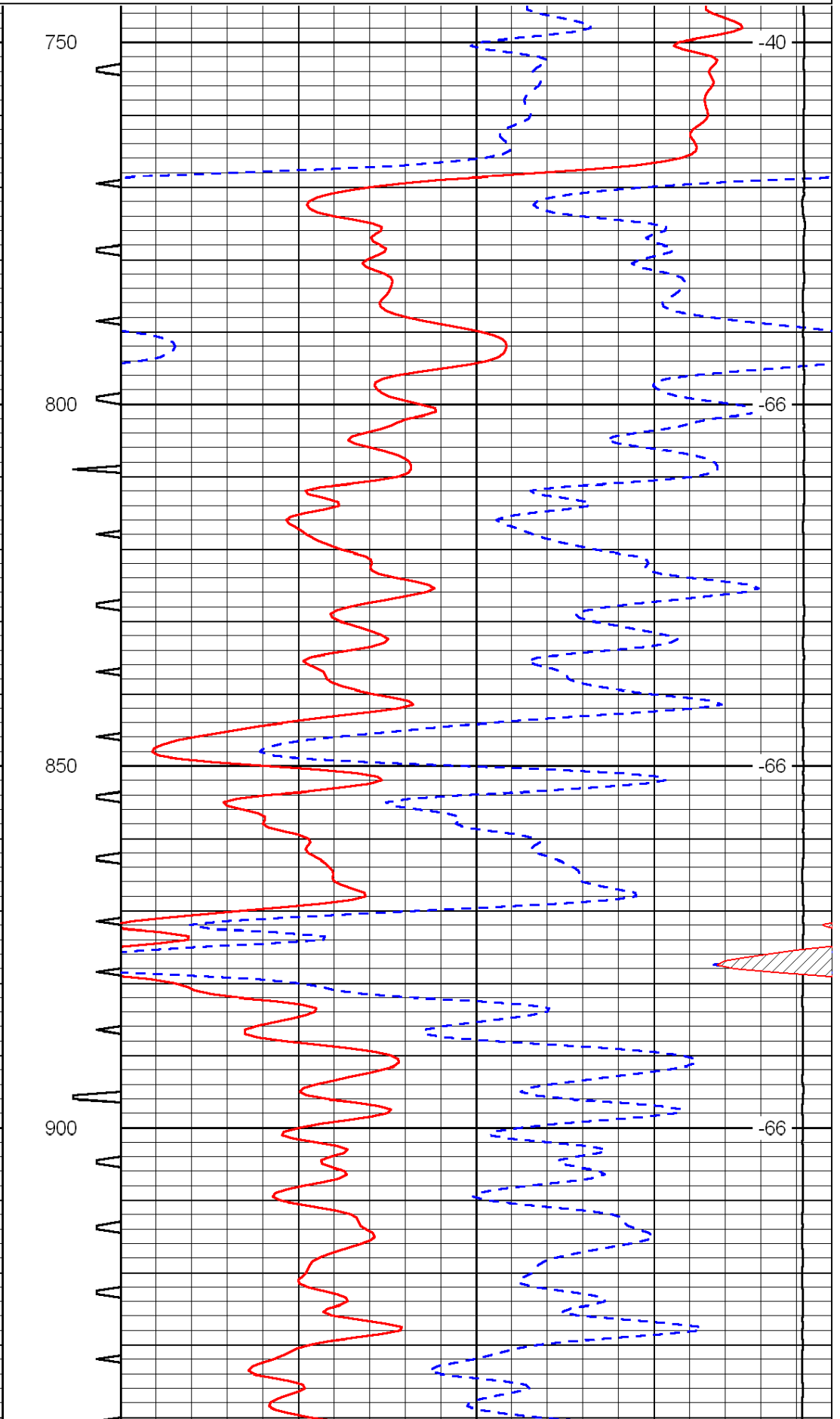
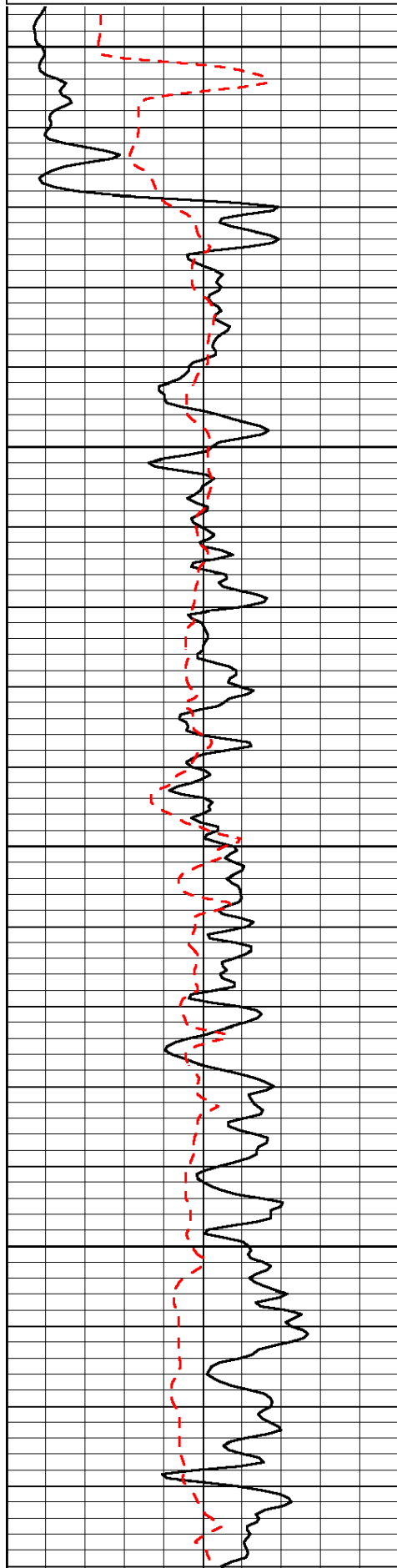
Comments

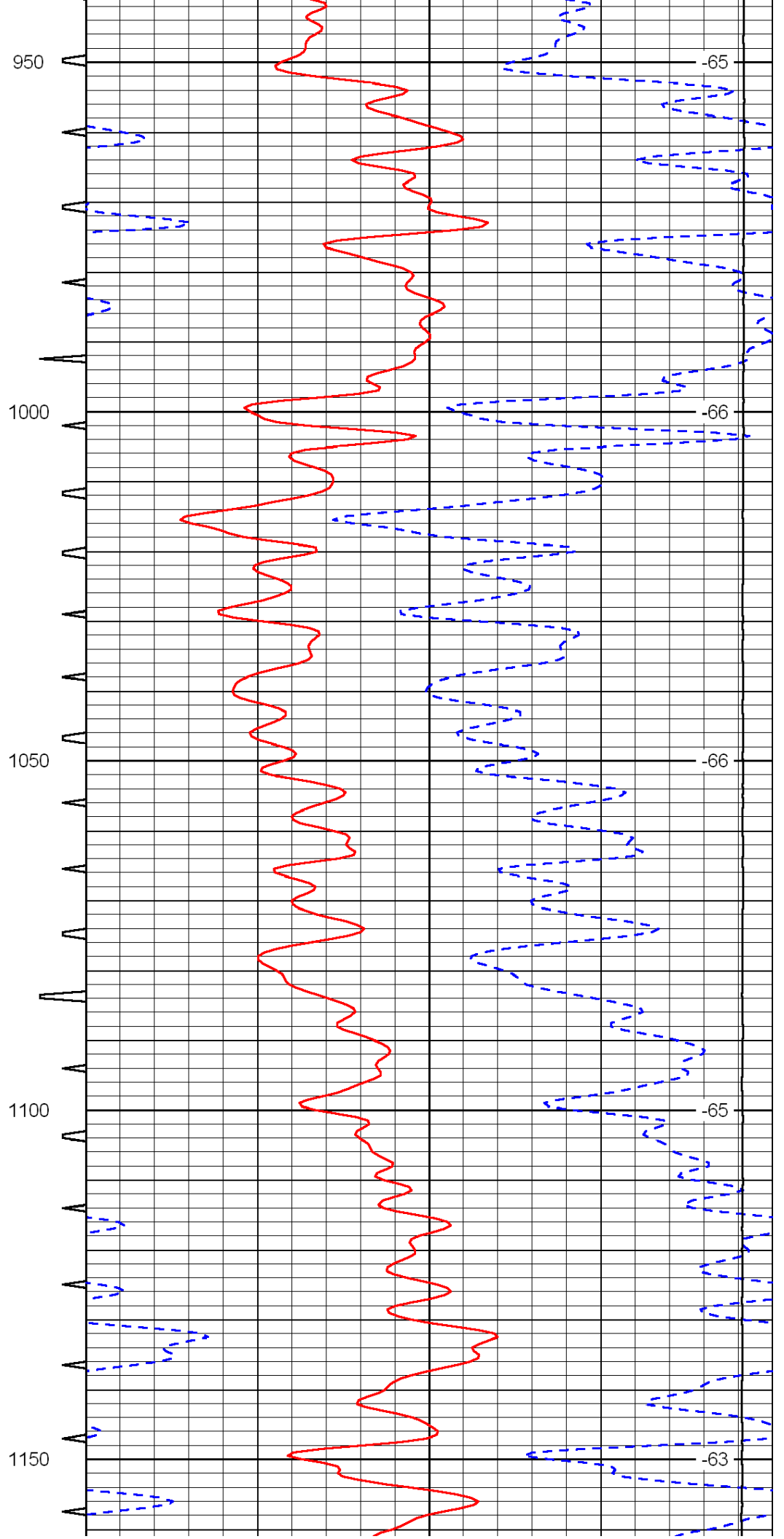
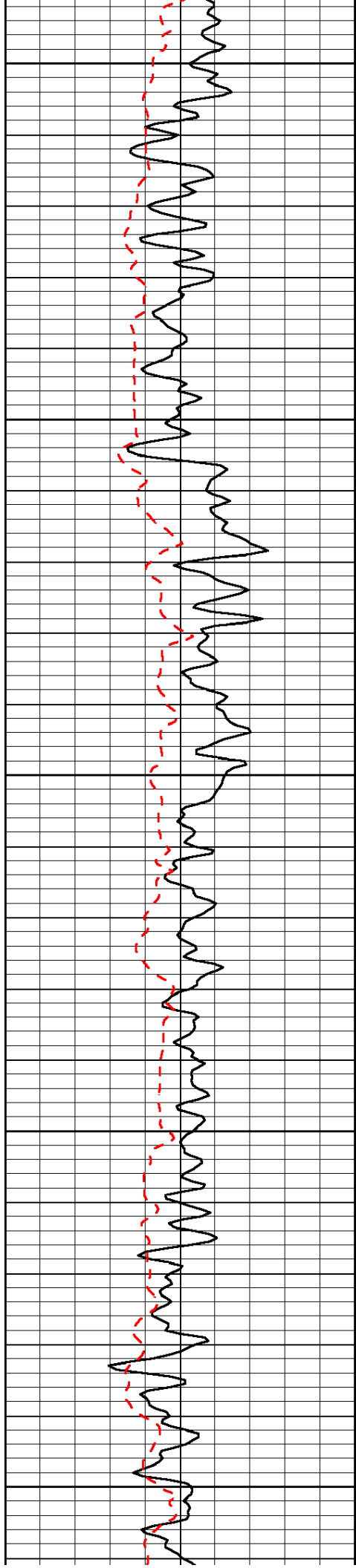
Thank you for using Log-Tech, Inc.
(785) 625-3858

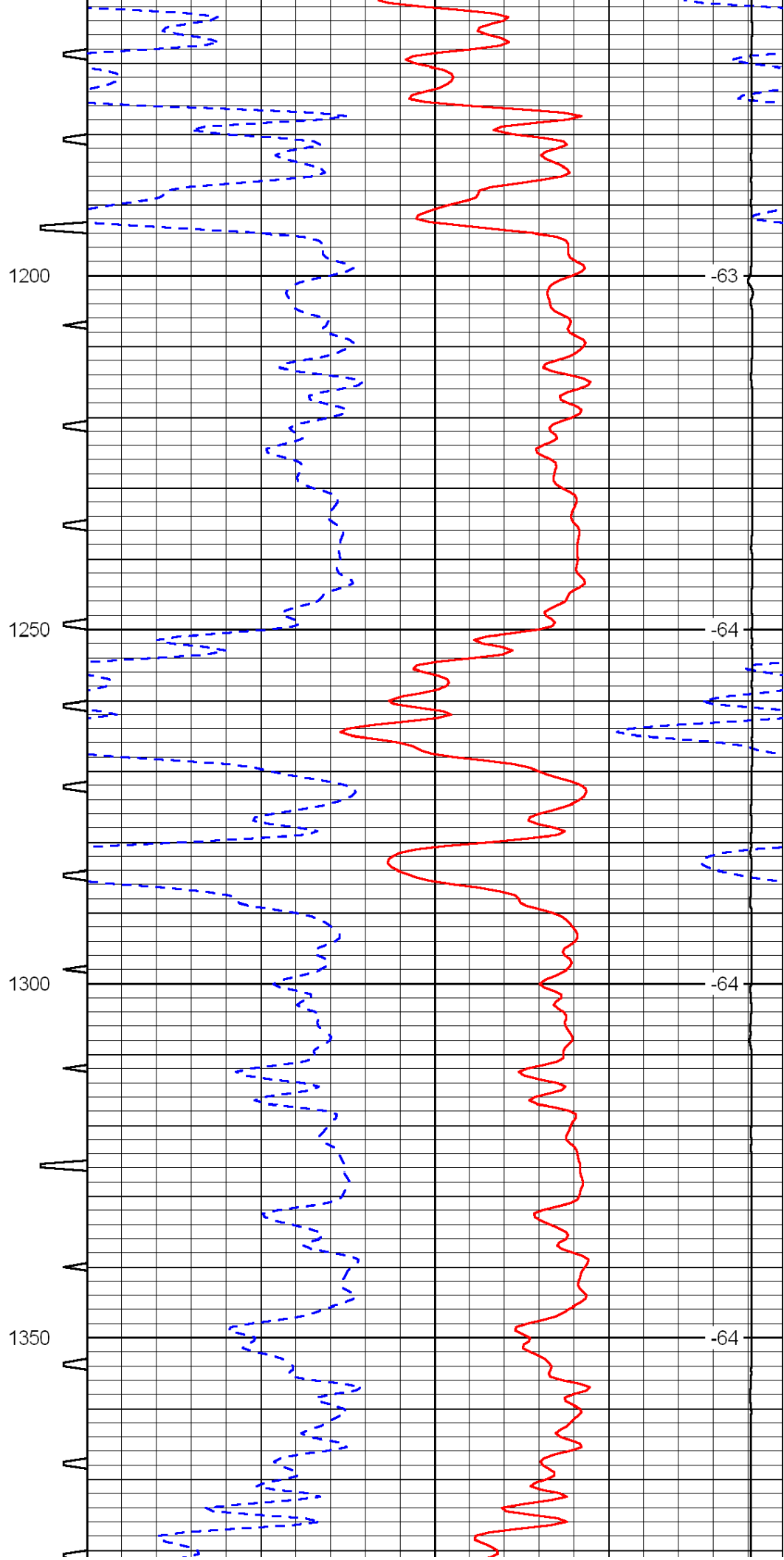
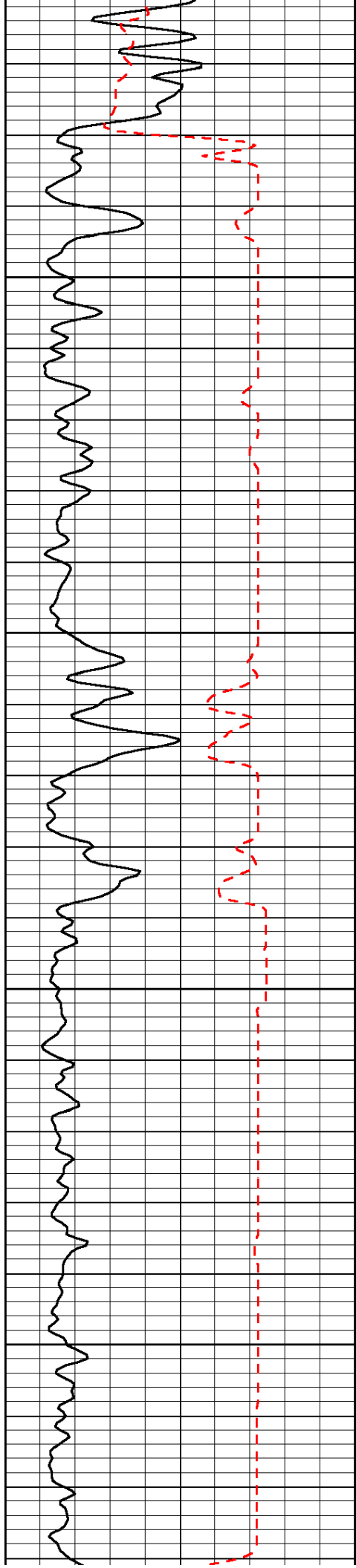
Beaver KS, 7 East to 130th Ave.
1/4 South, West Into

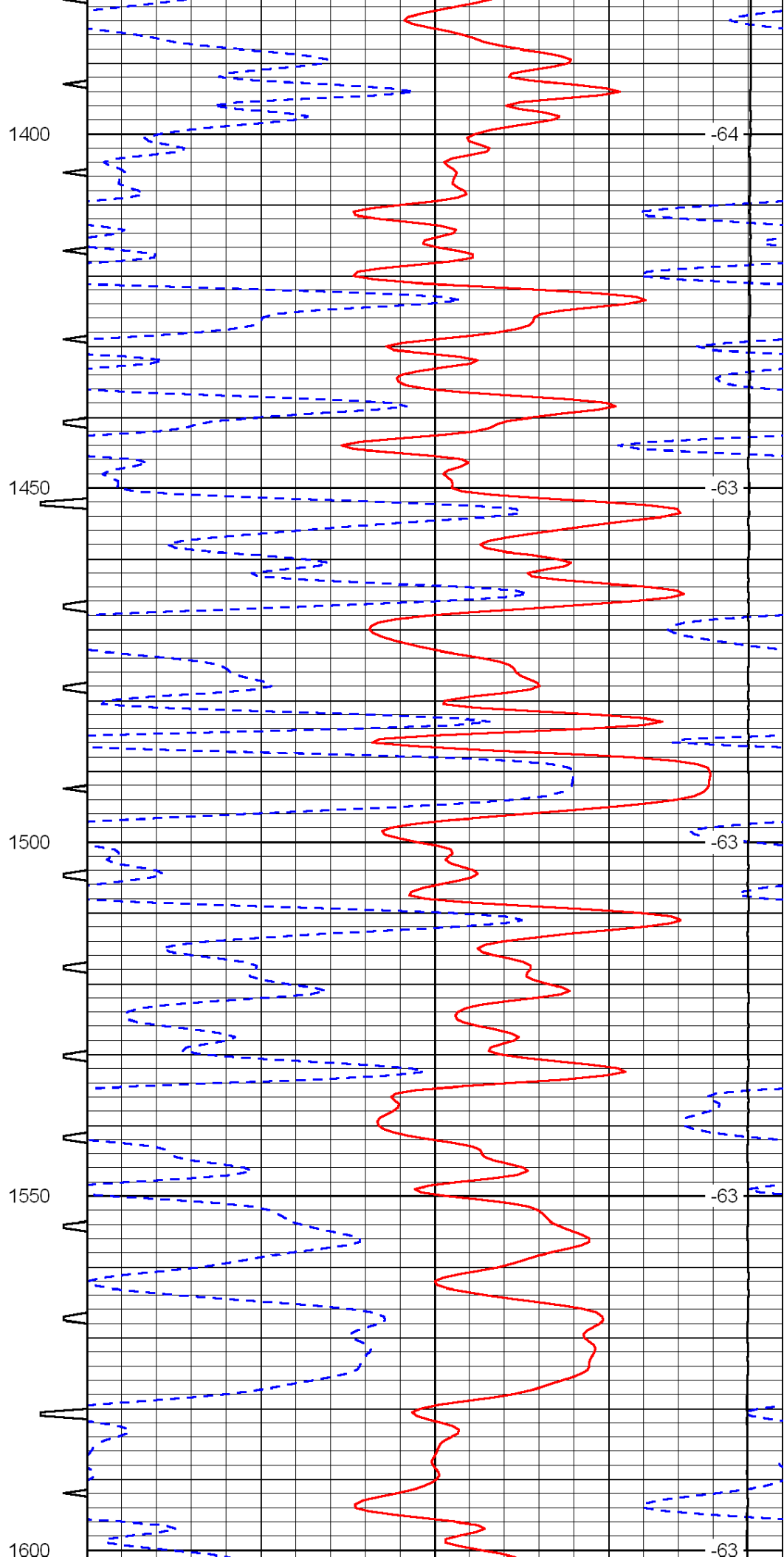
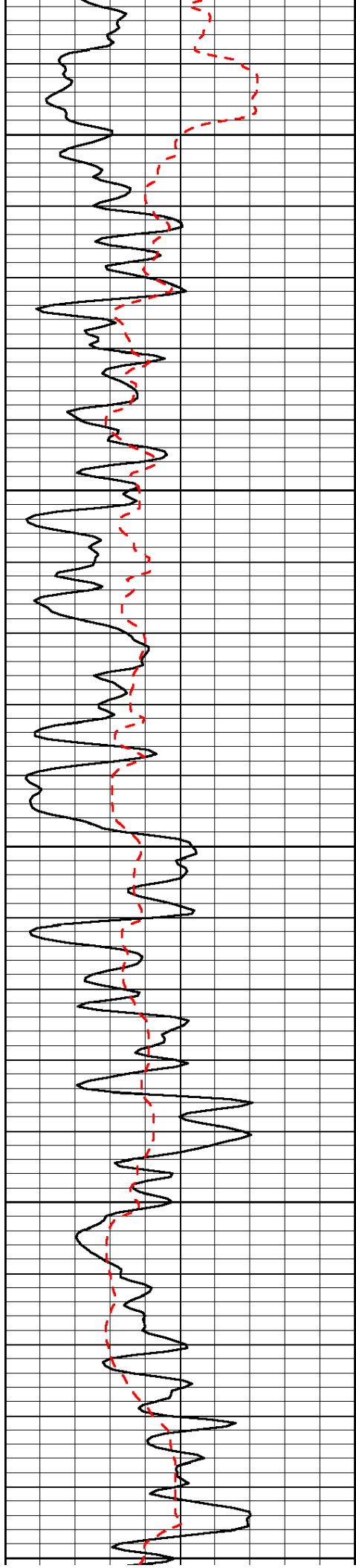
0	Gamma Ray	150	Sonic Int	140	Delta Time (usec/ft)	40
150	Gamma Ray	300	5	0	SPOR	-10
6	Caliper (GAPI)	16		15000	LTEN (lb)	0

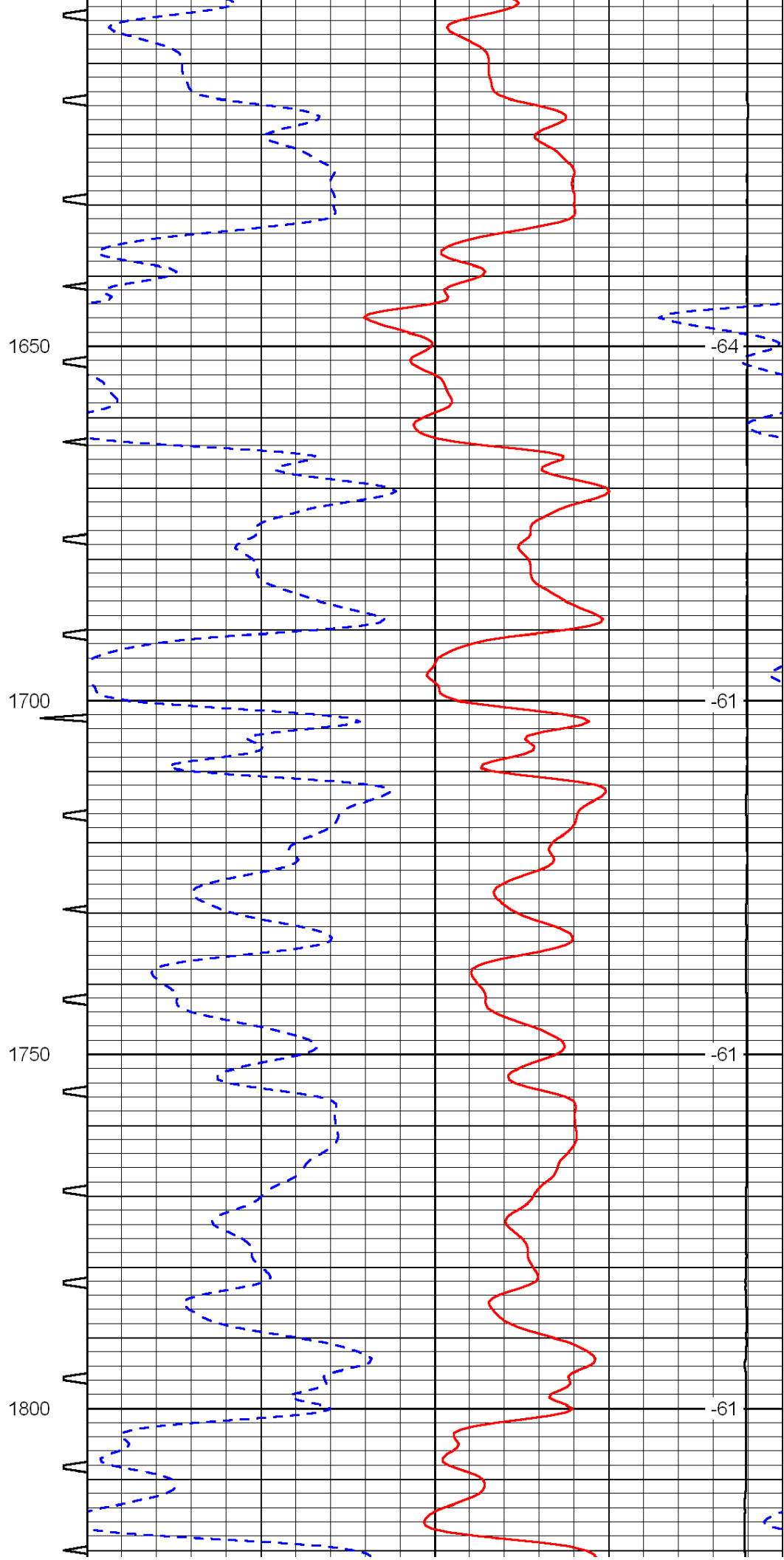
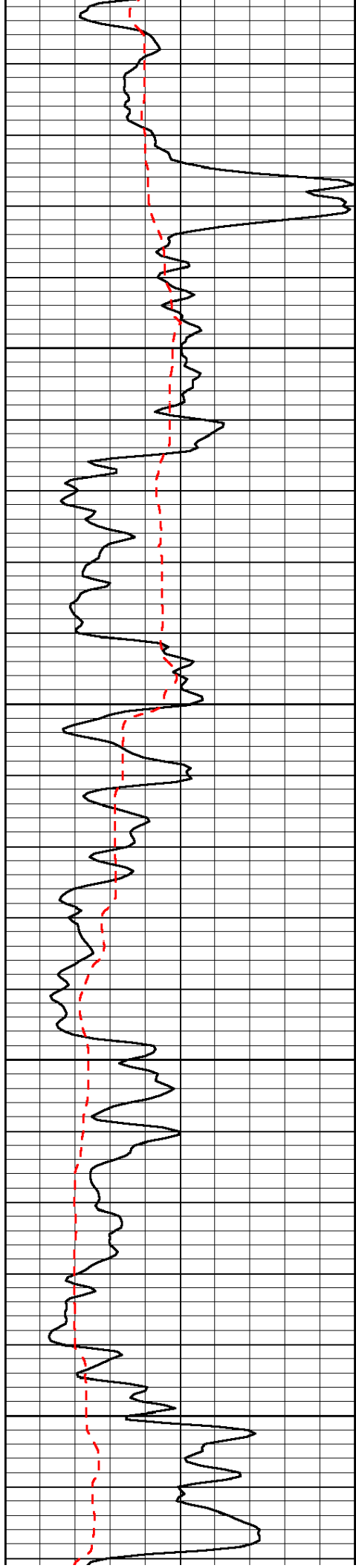
LSPD

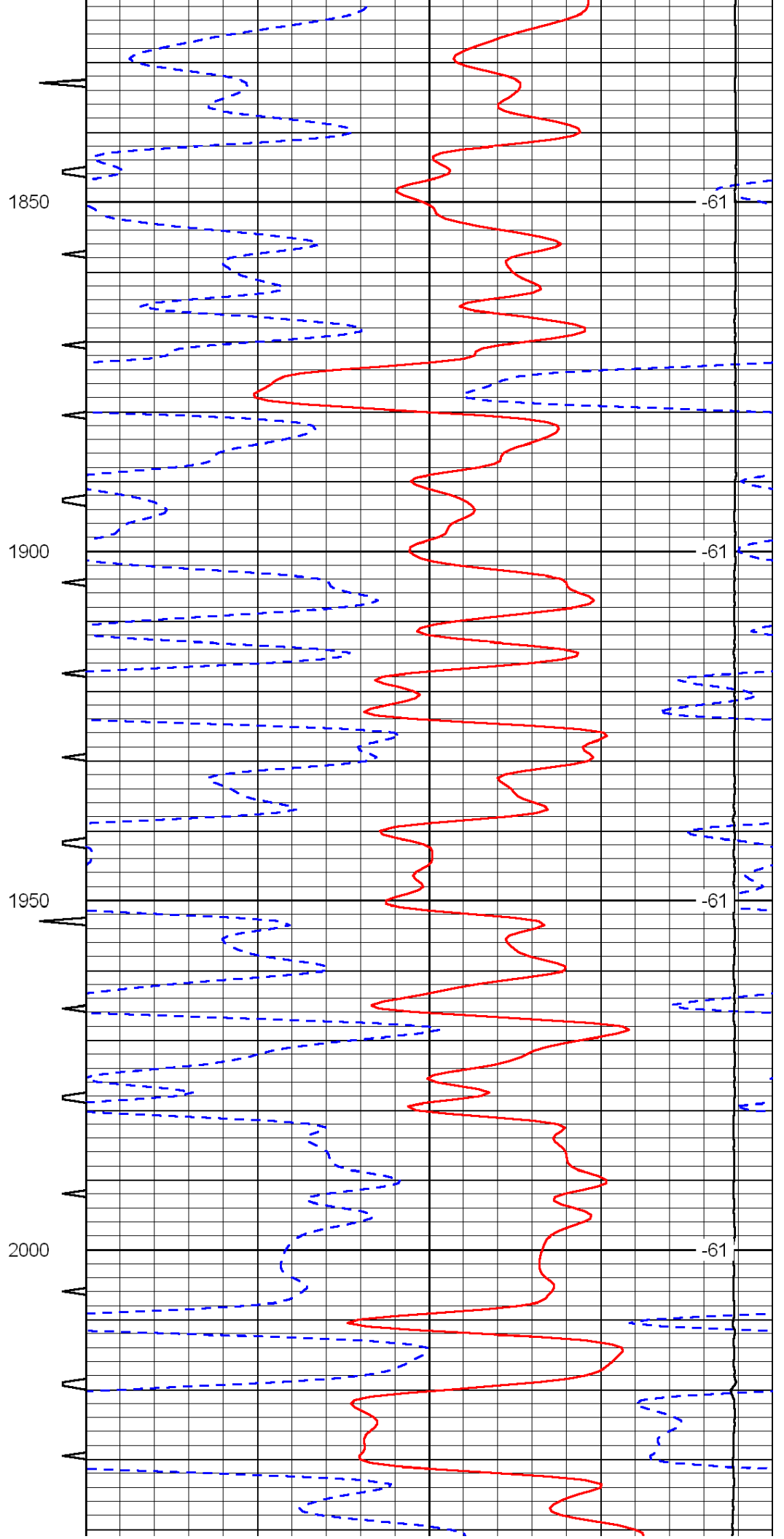
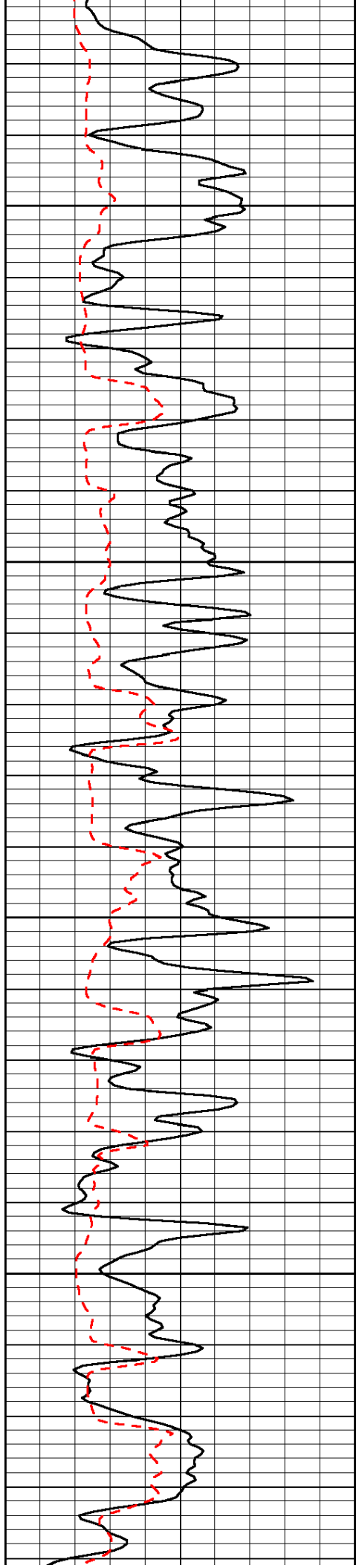


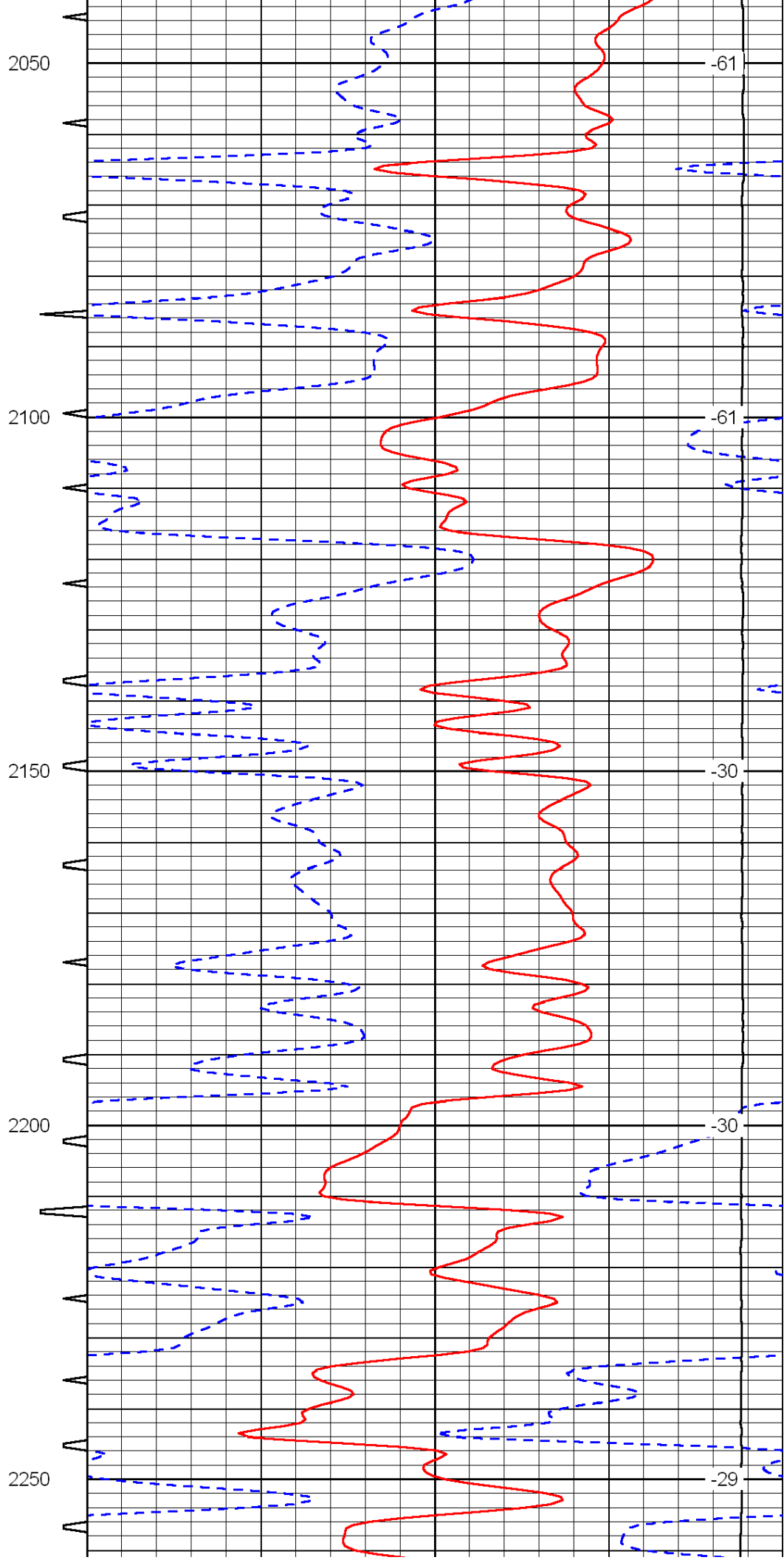
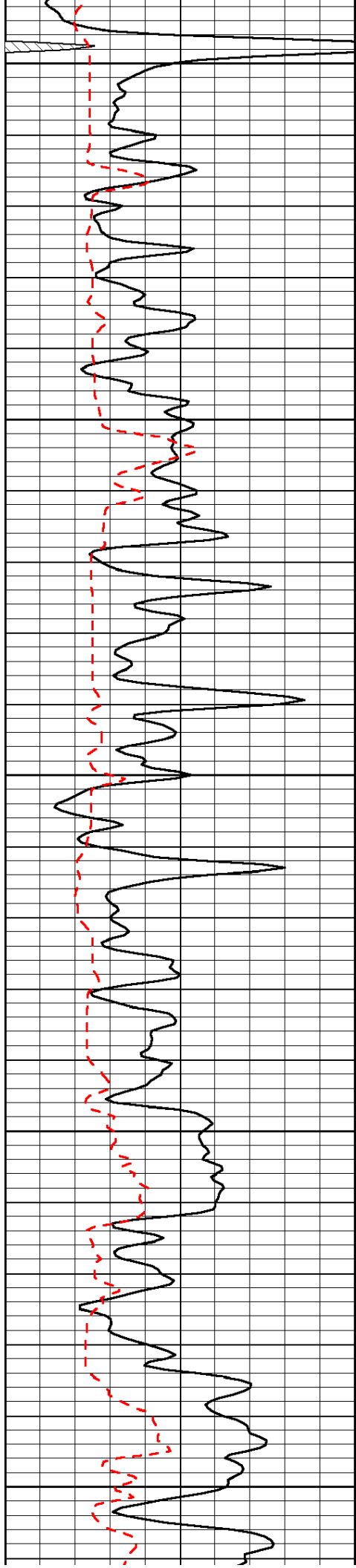


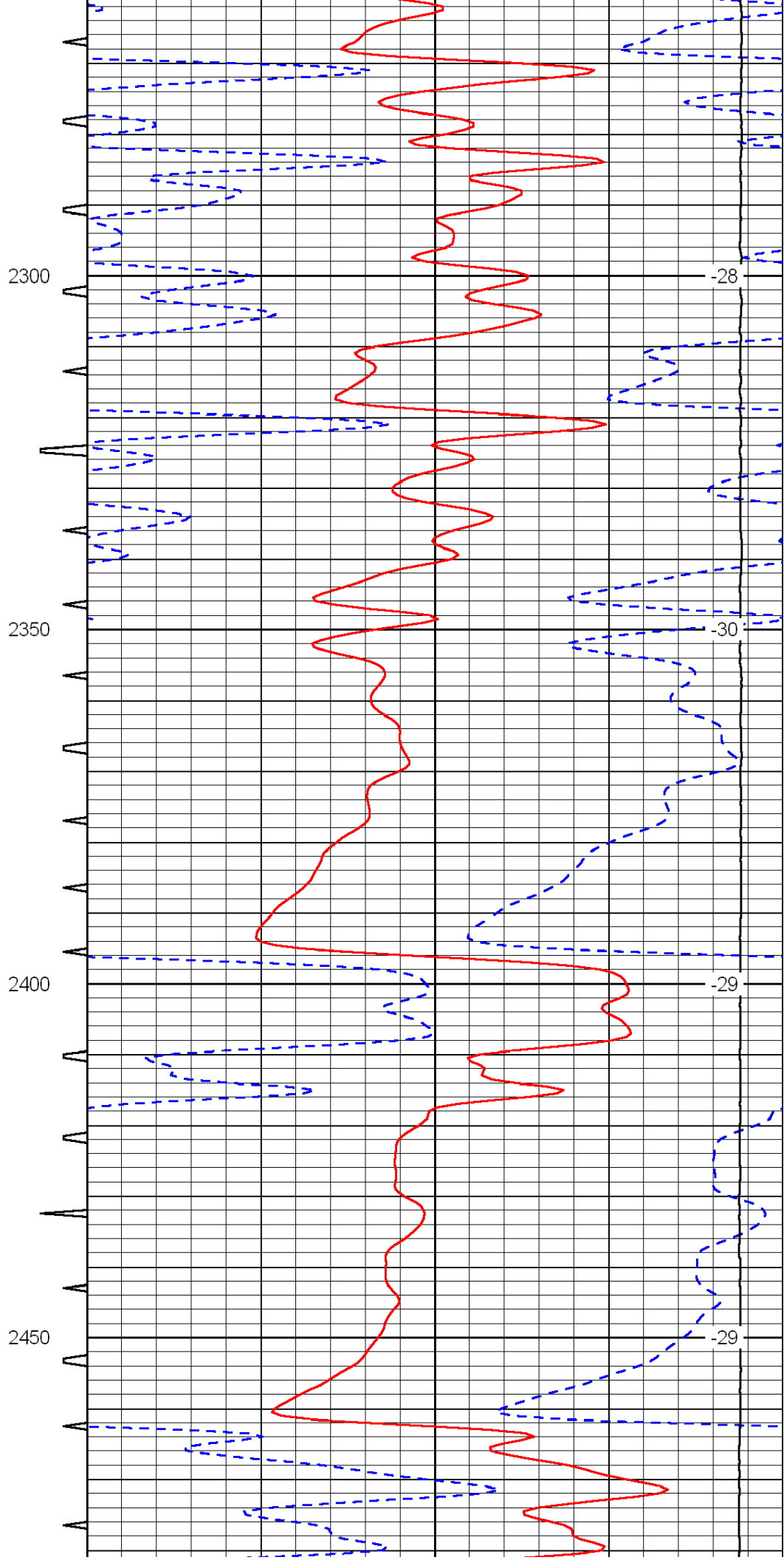
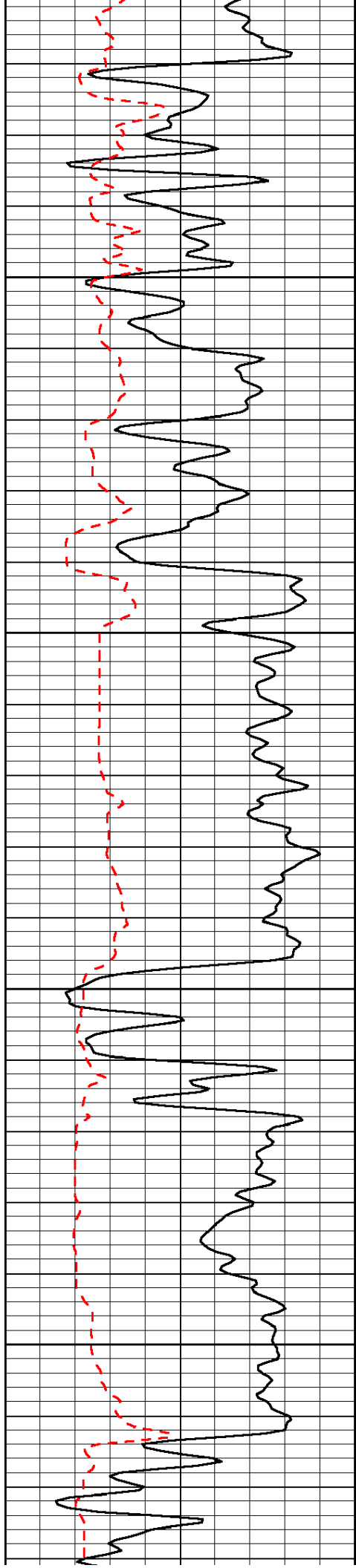


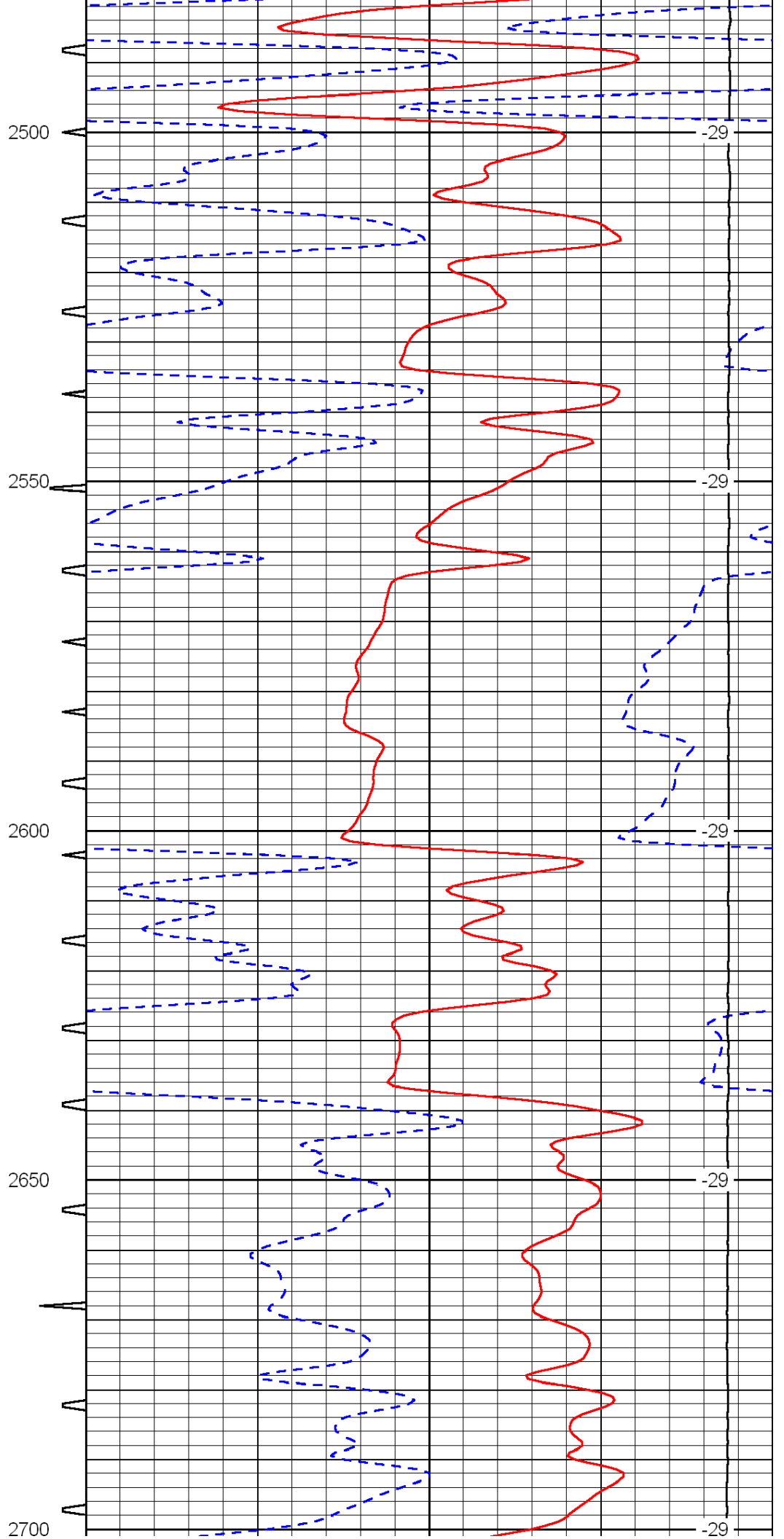
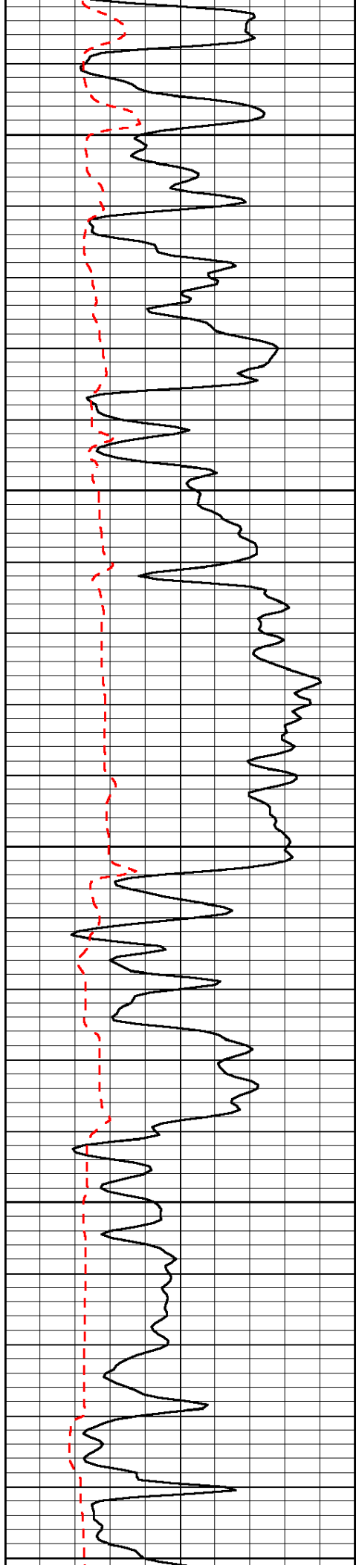


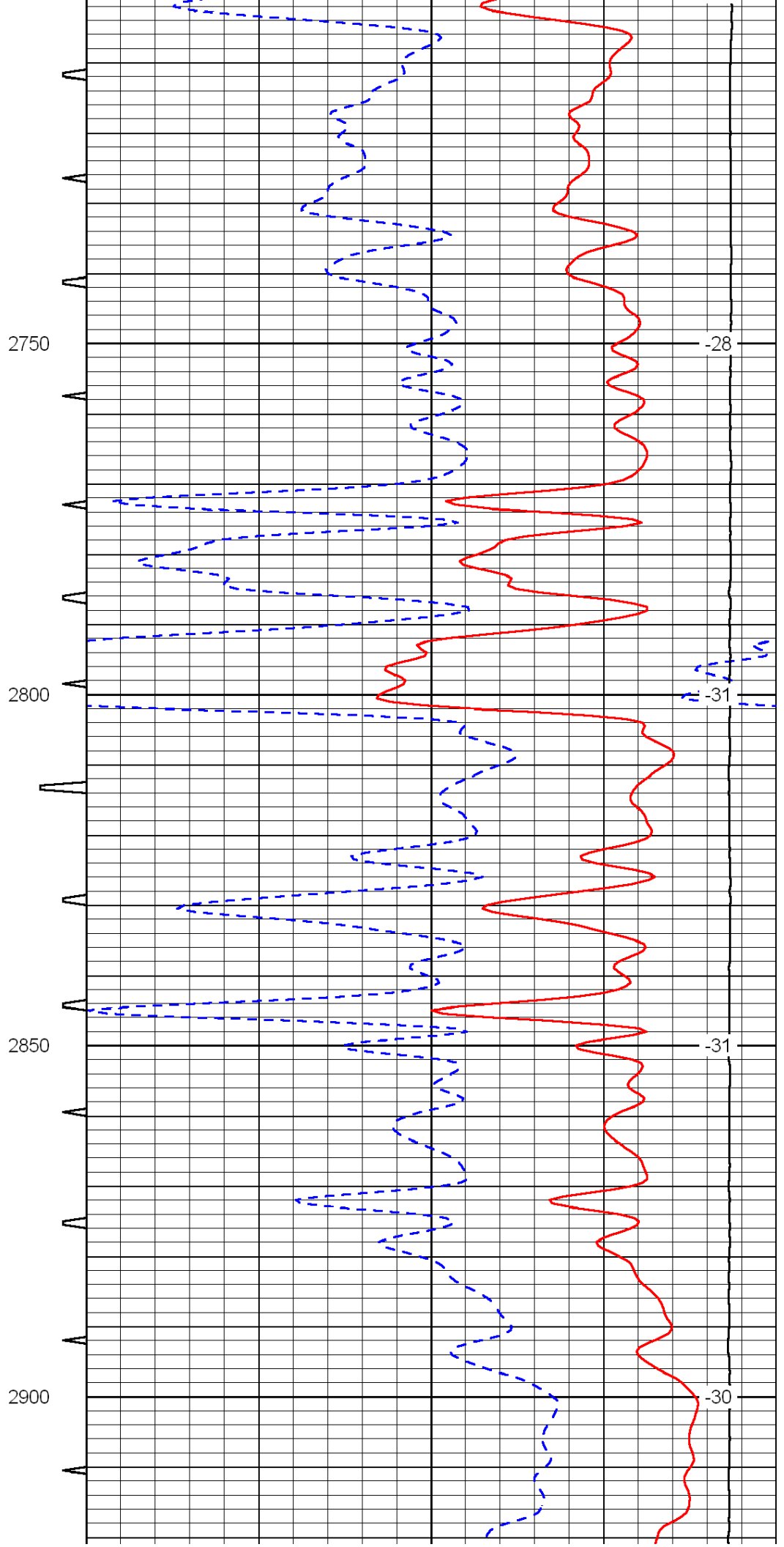
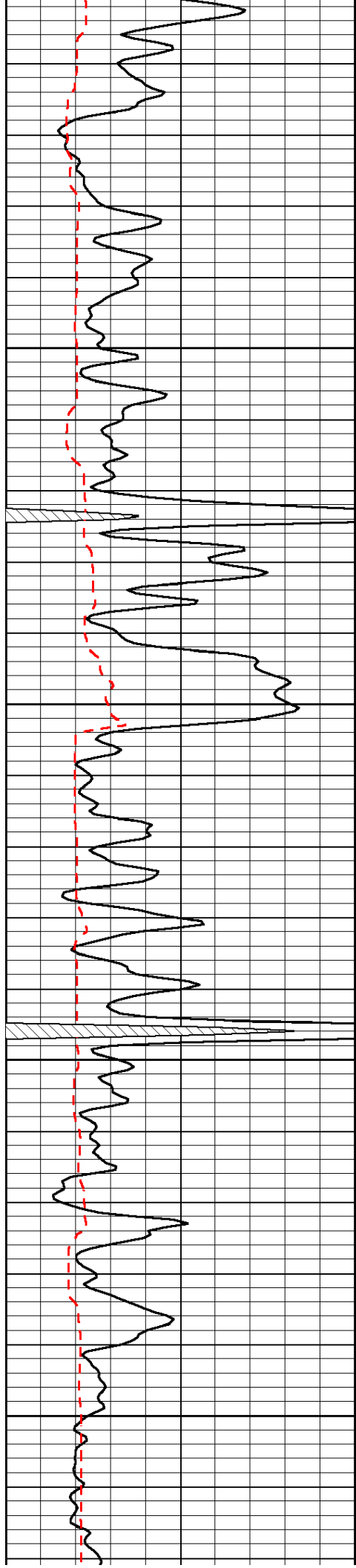


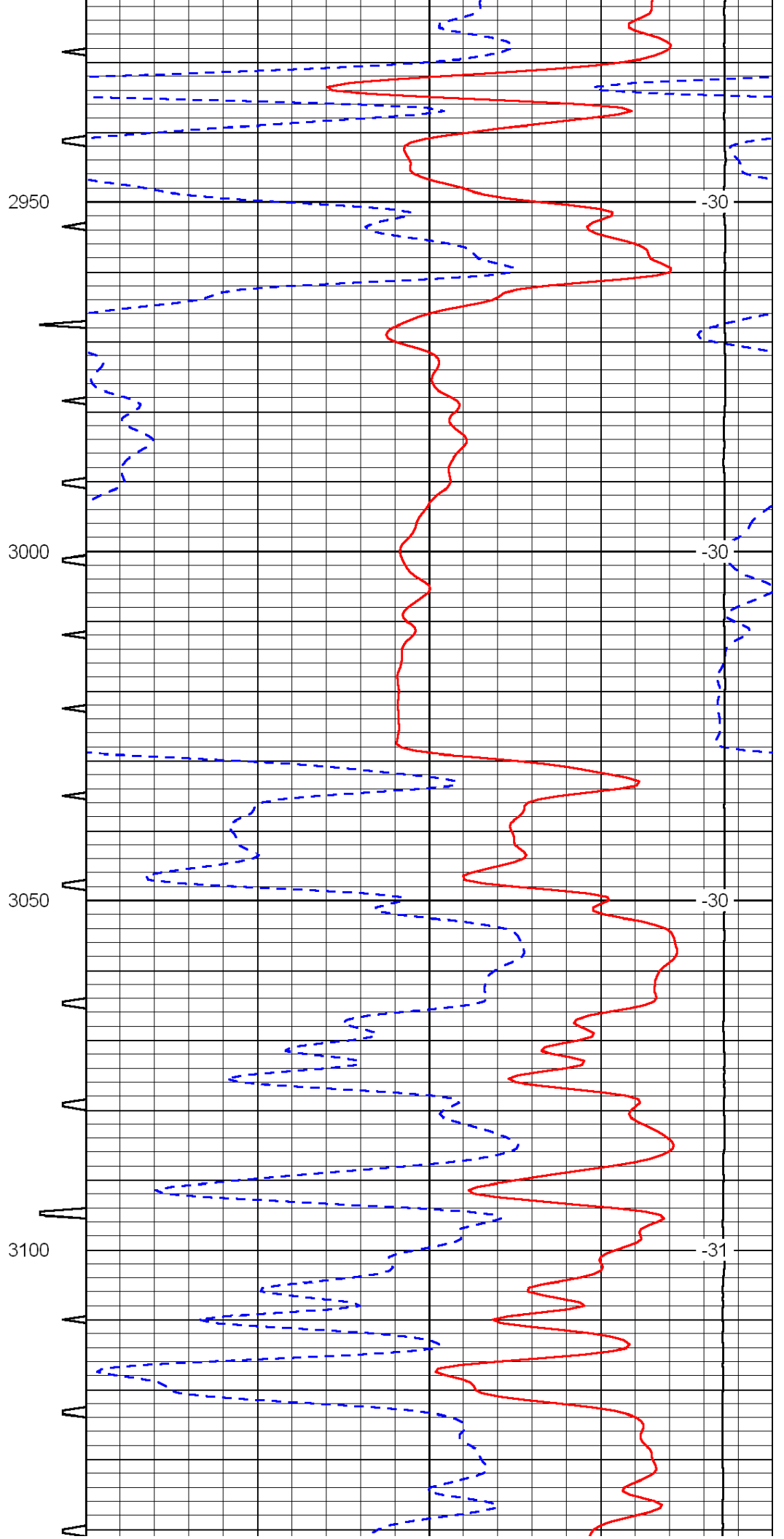
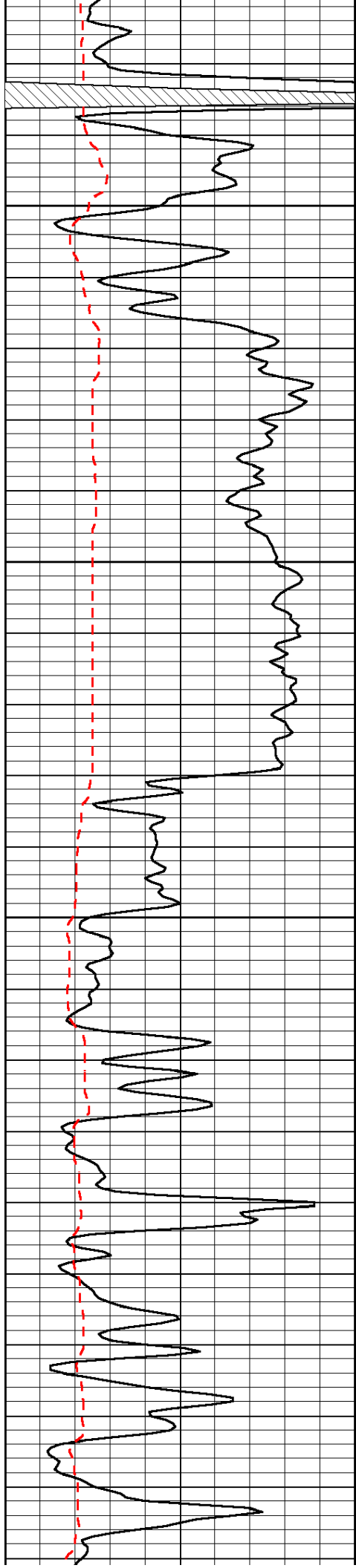


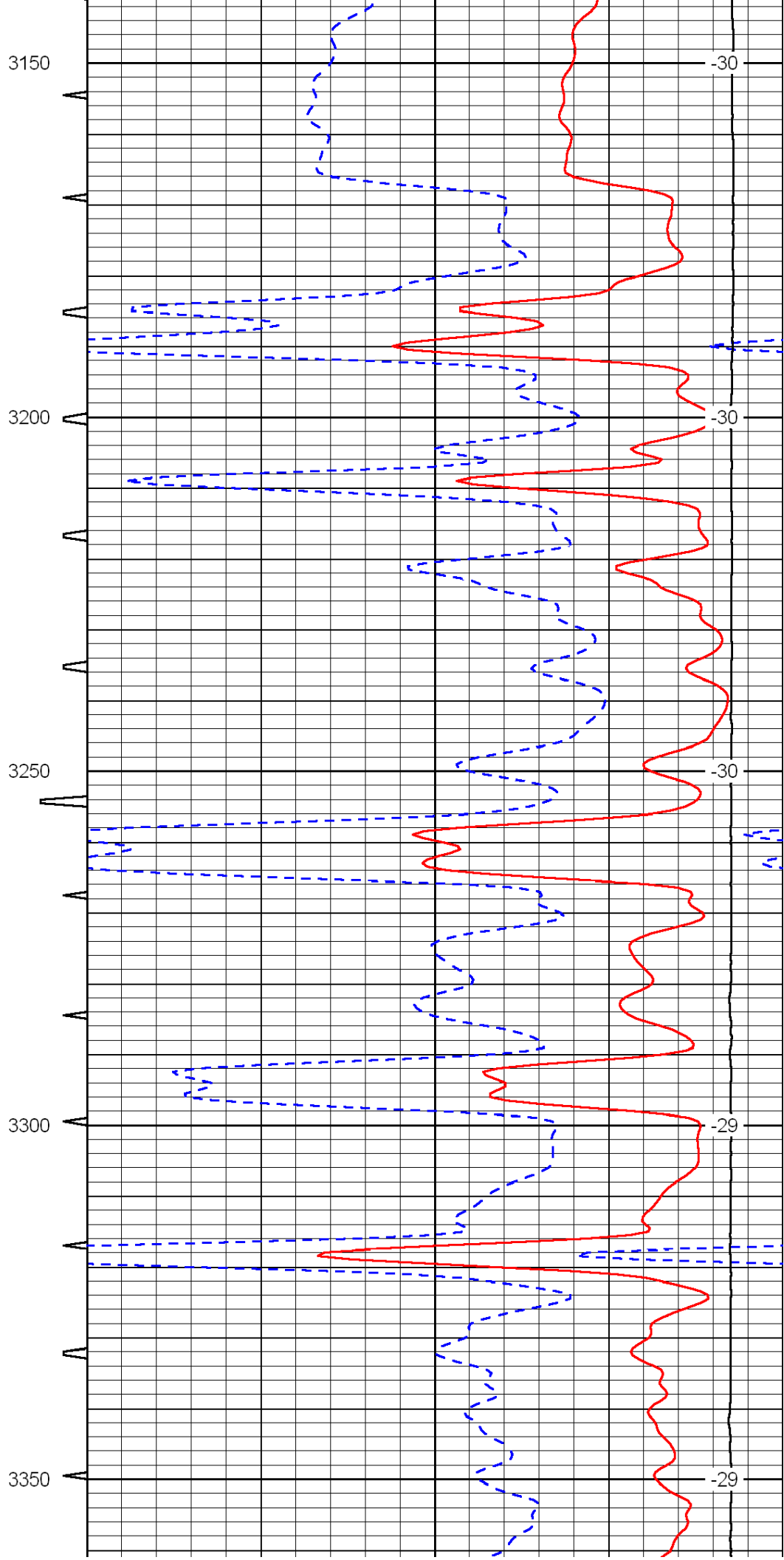
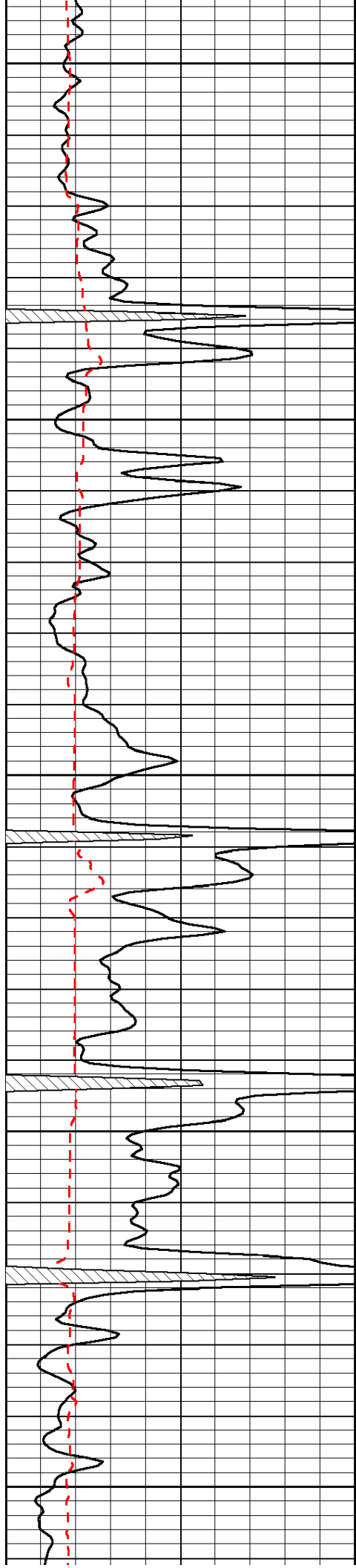


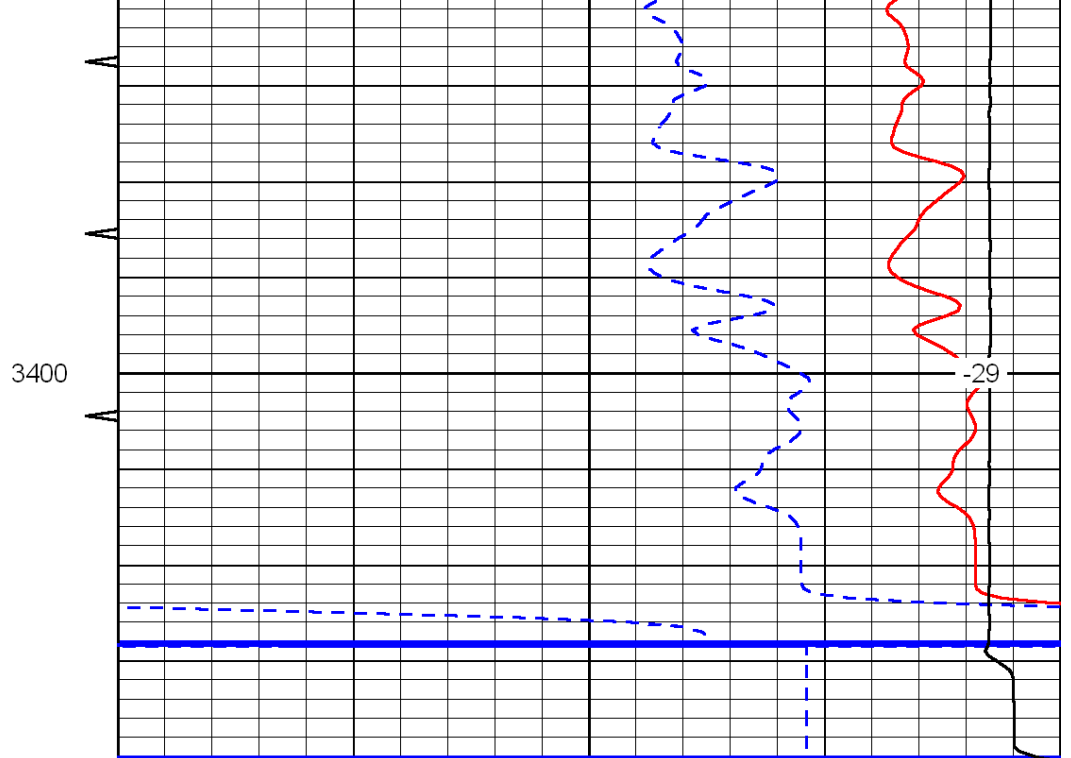
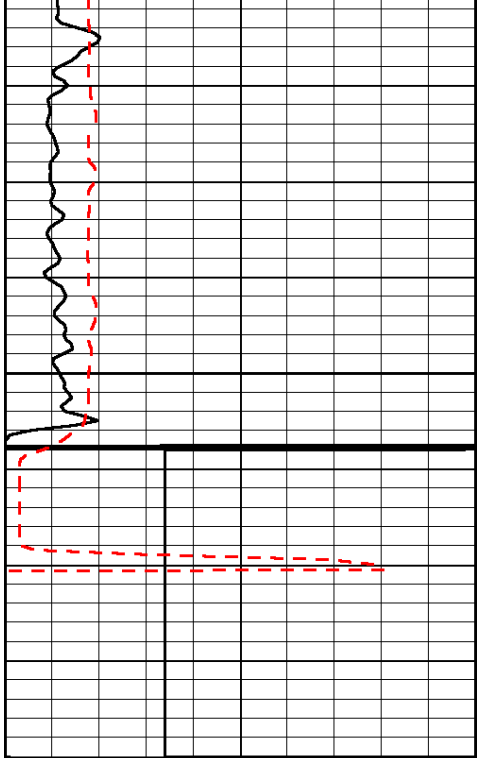












0	Gamma Ray	150	Sonic Int	140	Delta Time (usec/ft)	40
150	Gamma Ray	300	5	0	SPOR	-10
6	Caliper (GAPI)	16		15000	LTEN (lb)	0
						LSPD