



Dual Compensated  
Porosity Log

DIGITAL LOG (785) 625-3858

API No. 15-009-25,582-00-00

Company Empire Energy E&P LLC.  
Well Esfeld No. 9  
Field Kraft-Prusa  
County Barton State Kansas

Location SW SW NE NE  
1100' FNL & 1220' FSL

Sec: 28 Twp: 18 S Rge: 11 W

Other Services  
DIL/MEI  
BHCS

Permanent Datum Ground Level Elevation 1904  
Log Measured From Kelly Bushing 7 Ft. Above Perm. Datum  
Drilling Measured From Kelly Bushing

K.B. 1911  
D.F. 1904  
G.L. 1904

Date 8/11/2011

Run Number One

Type Log CNL / CDL

Depth Driller 3430

Depth Logger 3430

Bottom Logged Interval 3409

Top Logged Interval 2200

Type Fluid In Hole Chemical

Salinity, PPM CL 7800

Density 9.4

Level Full

Max. Rec. Temp. F 110

Operating Rig Time 5 1/2 Hours

Equipment -- Location 10 Hays

Recorded By D Kerr

Witnessed By Kurt Talbott

Borehole Record				Casing Record			
Run No.	Bit	From	To	Size	Wgt.	From	To
One	12.25	0	752	8.625	23#	0	752
Two	7.875	752	TD				

<<< Fold Here >>>

All interpretations are opinions based on inferences from electrical or other measurements and we cannot and do not guarantee the accuracy or correctness of any interpretation, and we shall not, except in the case of gross or willful negligence on our part, be liable or responsible for any loss, costs, damages, or expenses incurred or sustained by anyone resulting from any interpretation made by any of our officers, agents or employees. These interpretations are also subject to our general terms and conditions set out in our current Price Schedule.

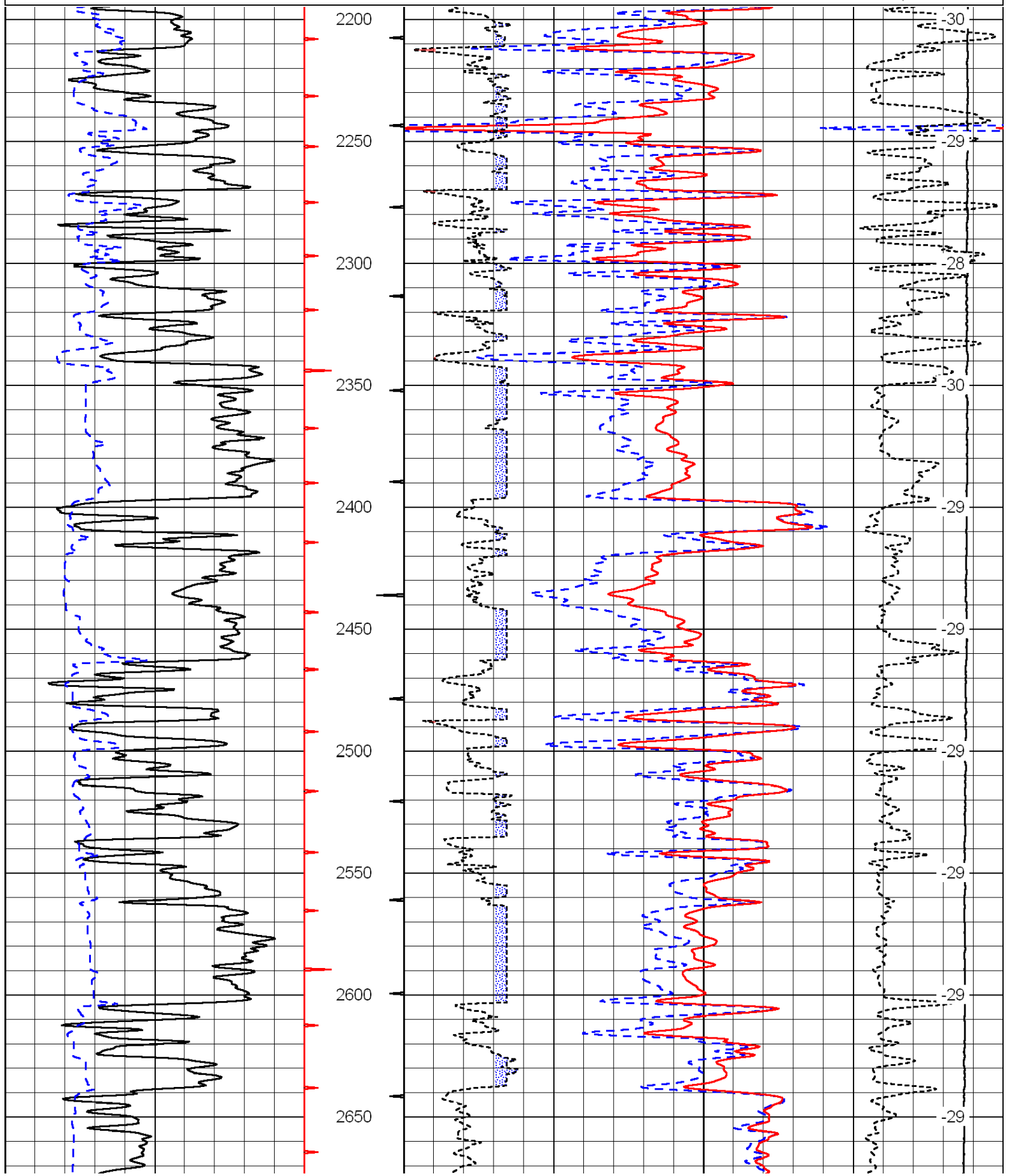
Comments

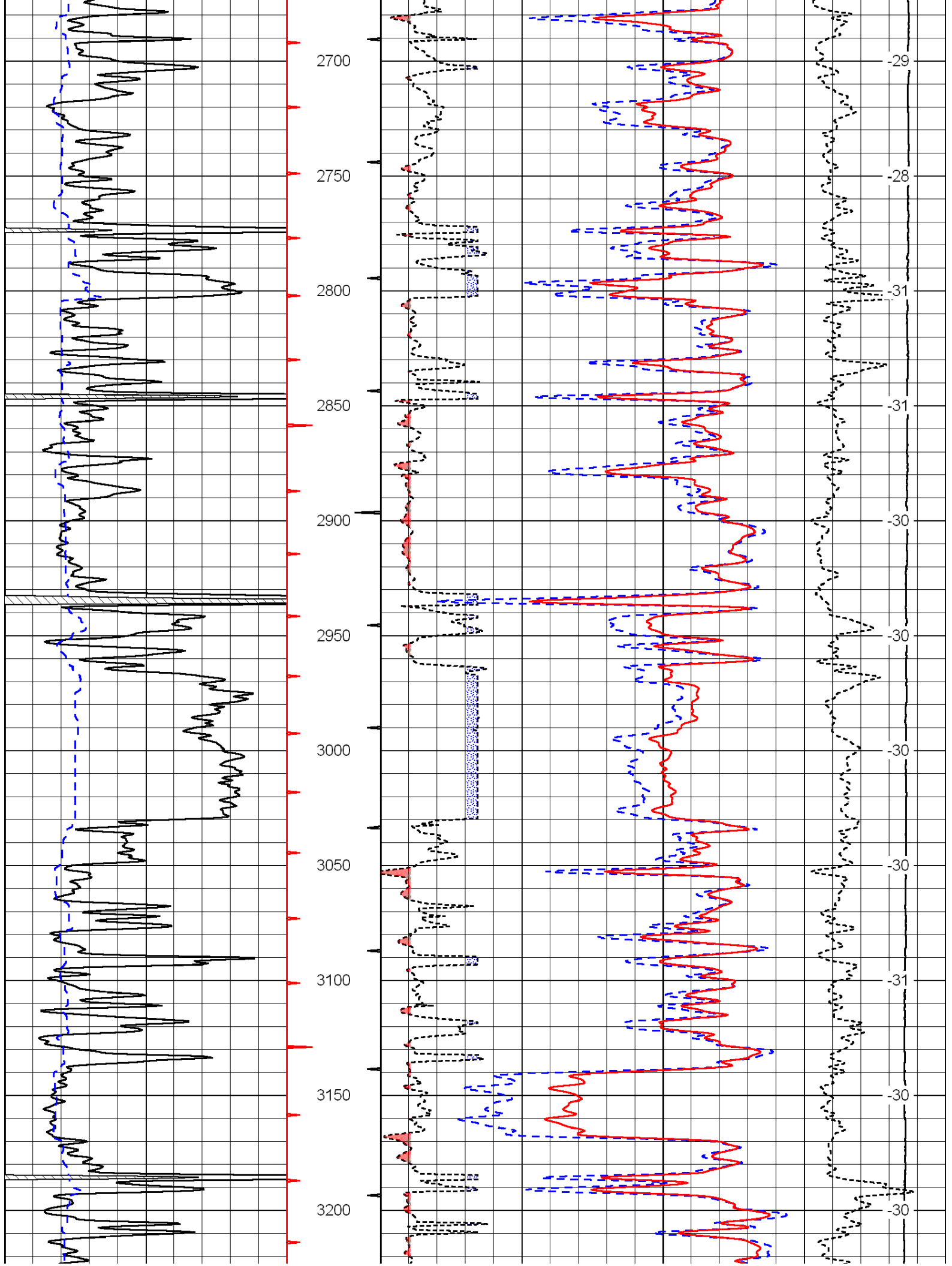
Thank you for using Log-Tech, Inc.  
(785) 625-3858

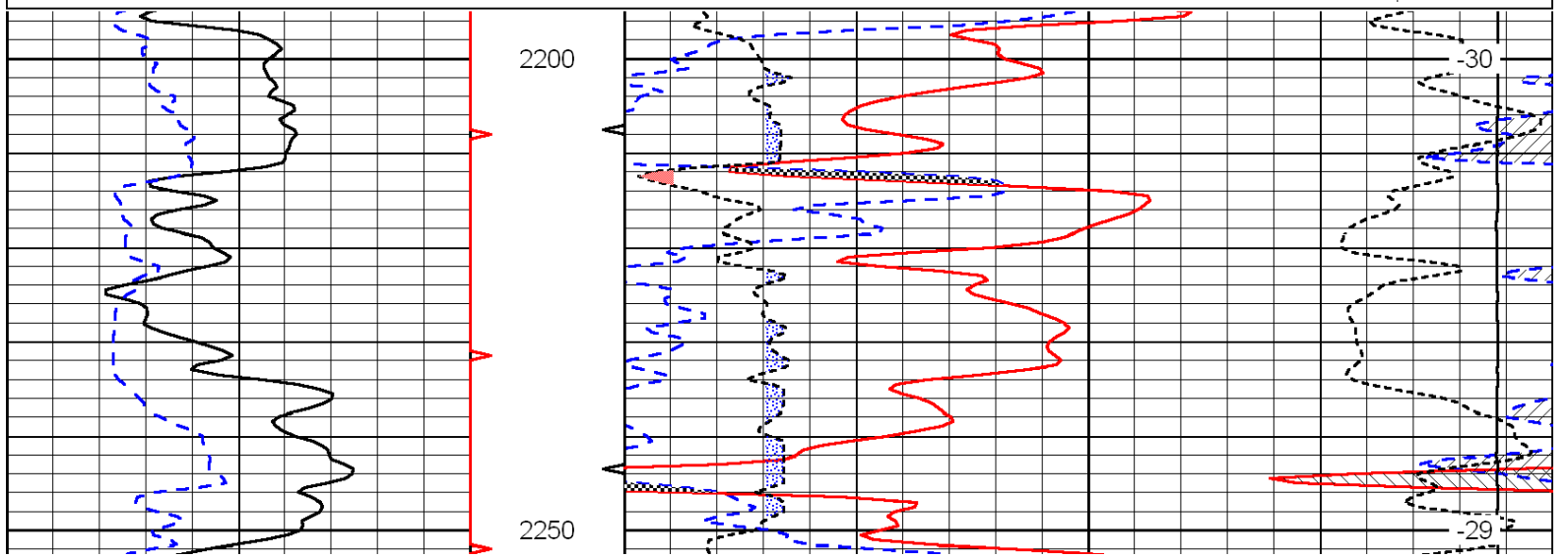
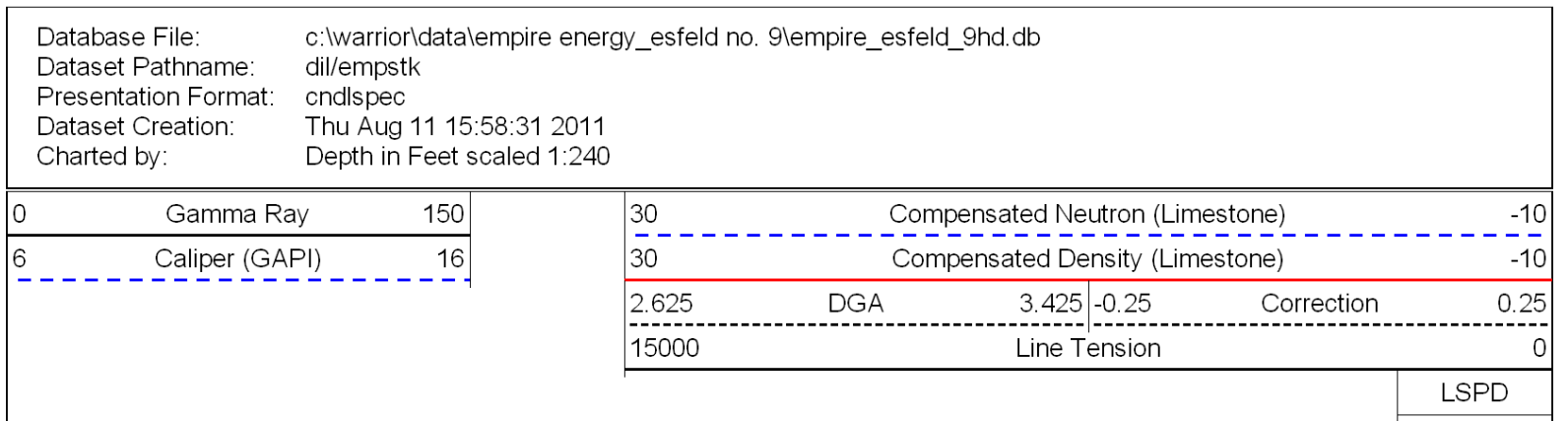
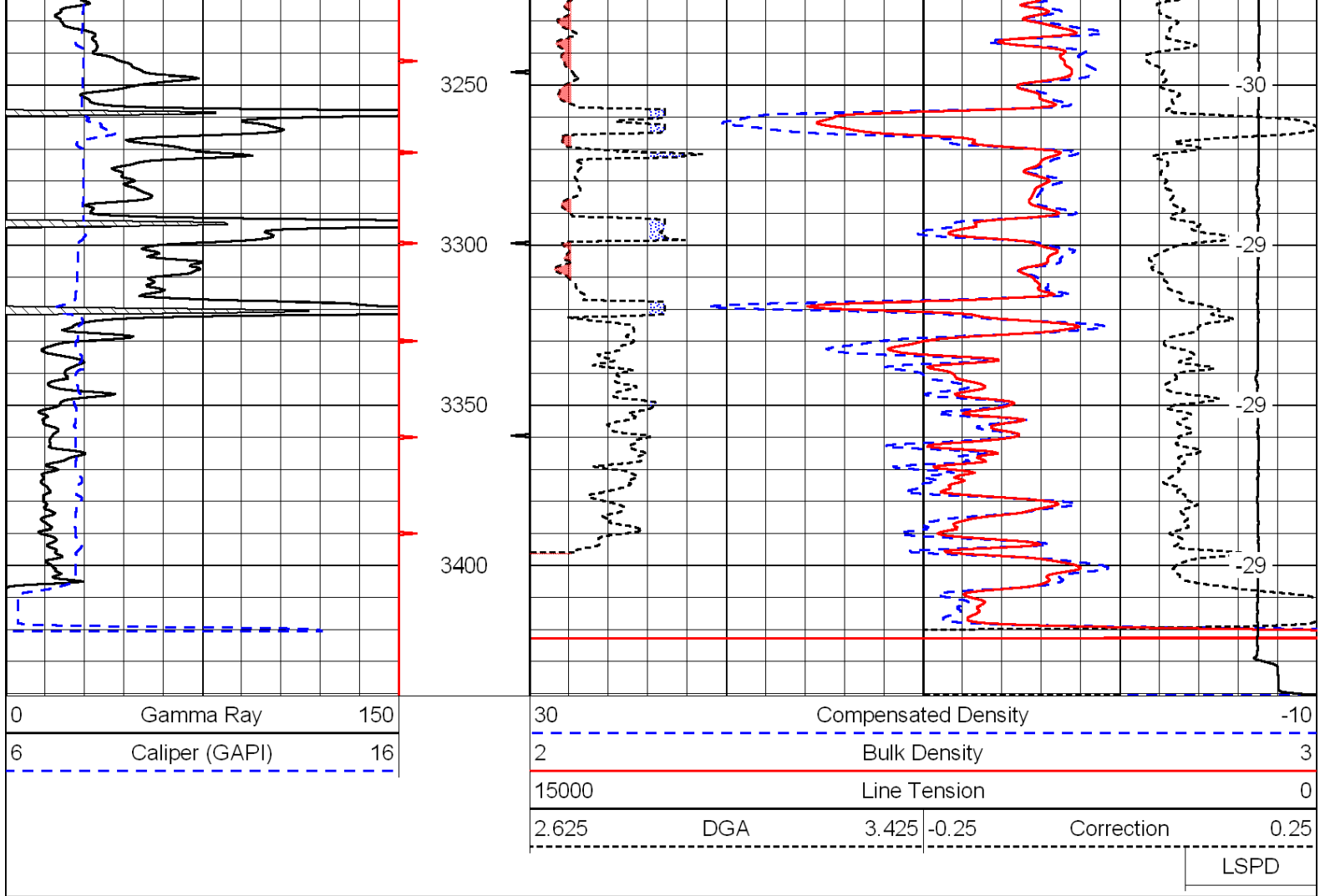
Beaver KS, 7 East to 130th Ave.  
1/4 South, West Into

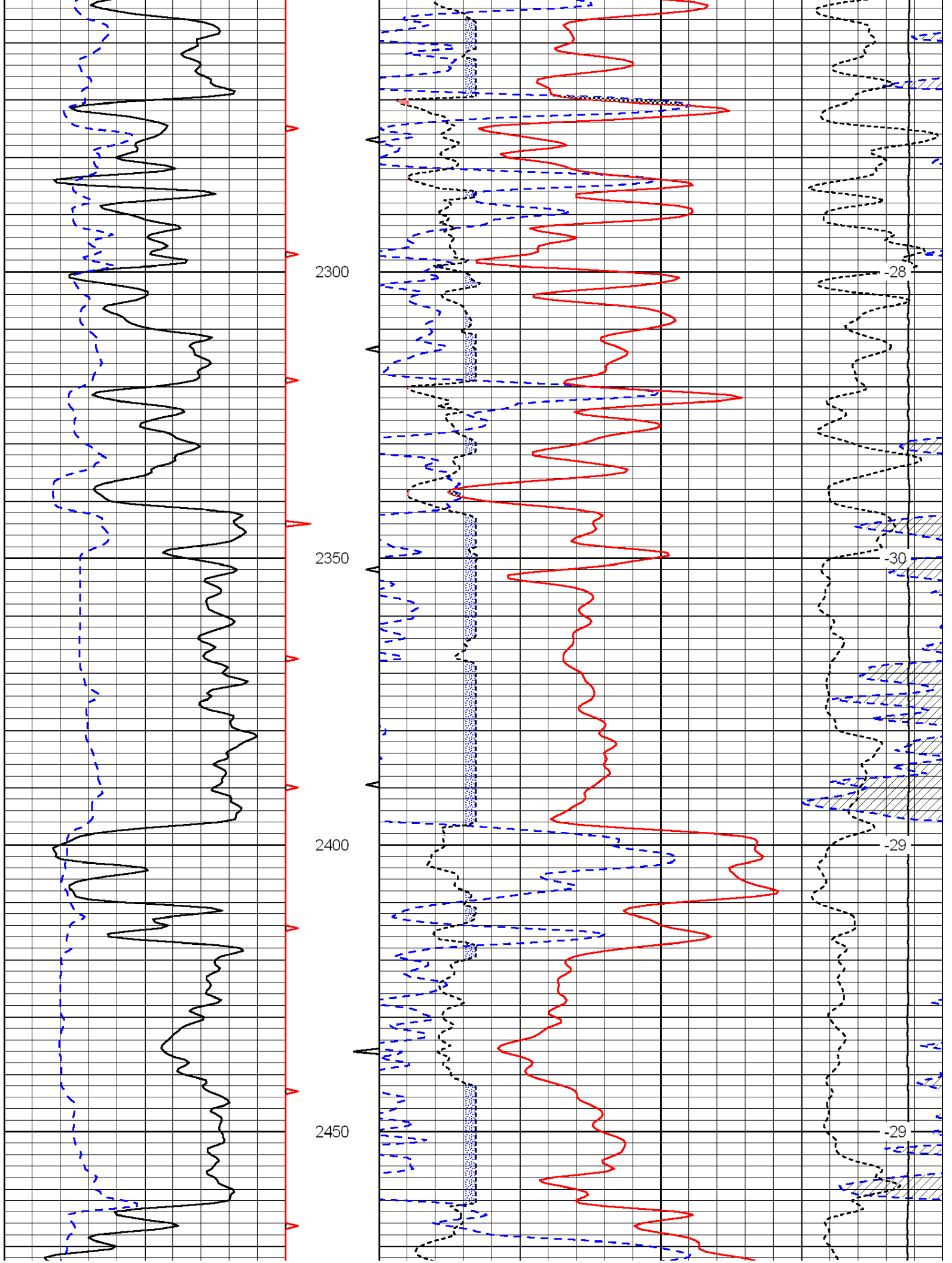
0	Gamma Ray	150
6	Caliper (GAPI)	16

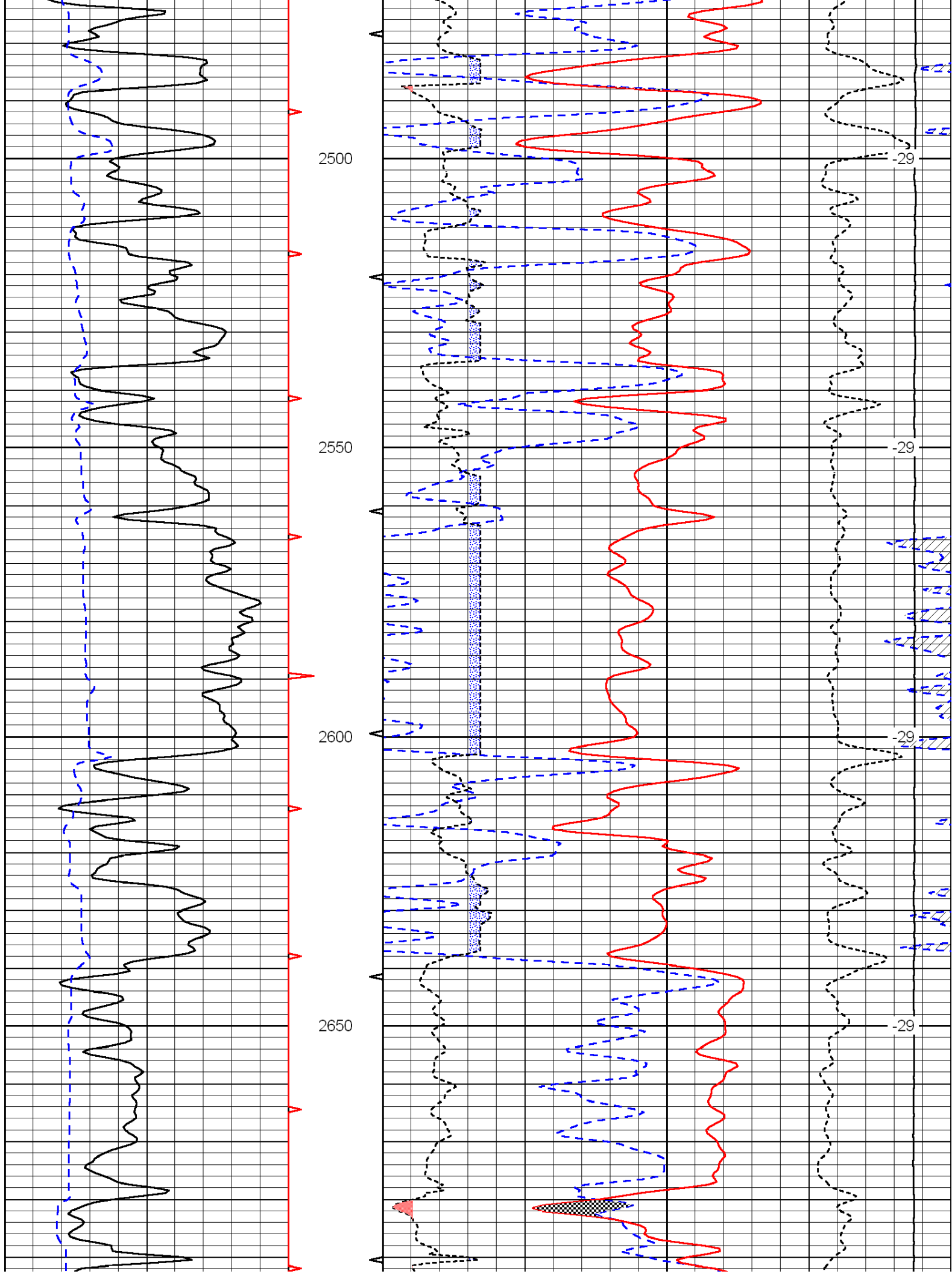
30	Compensated Density		-10
2	Bulk Density		3
15000	Line Tension		0
2.625	DGA	3.425	-0.25
			Correction
			0.25
LSPD			

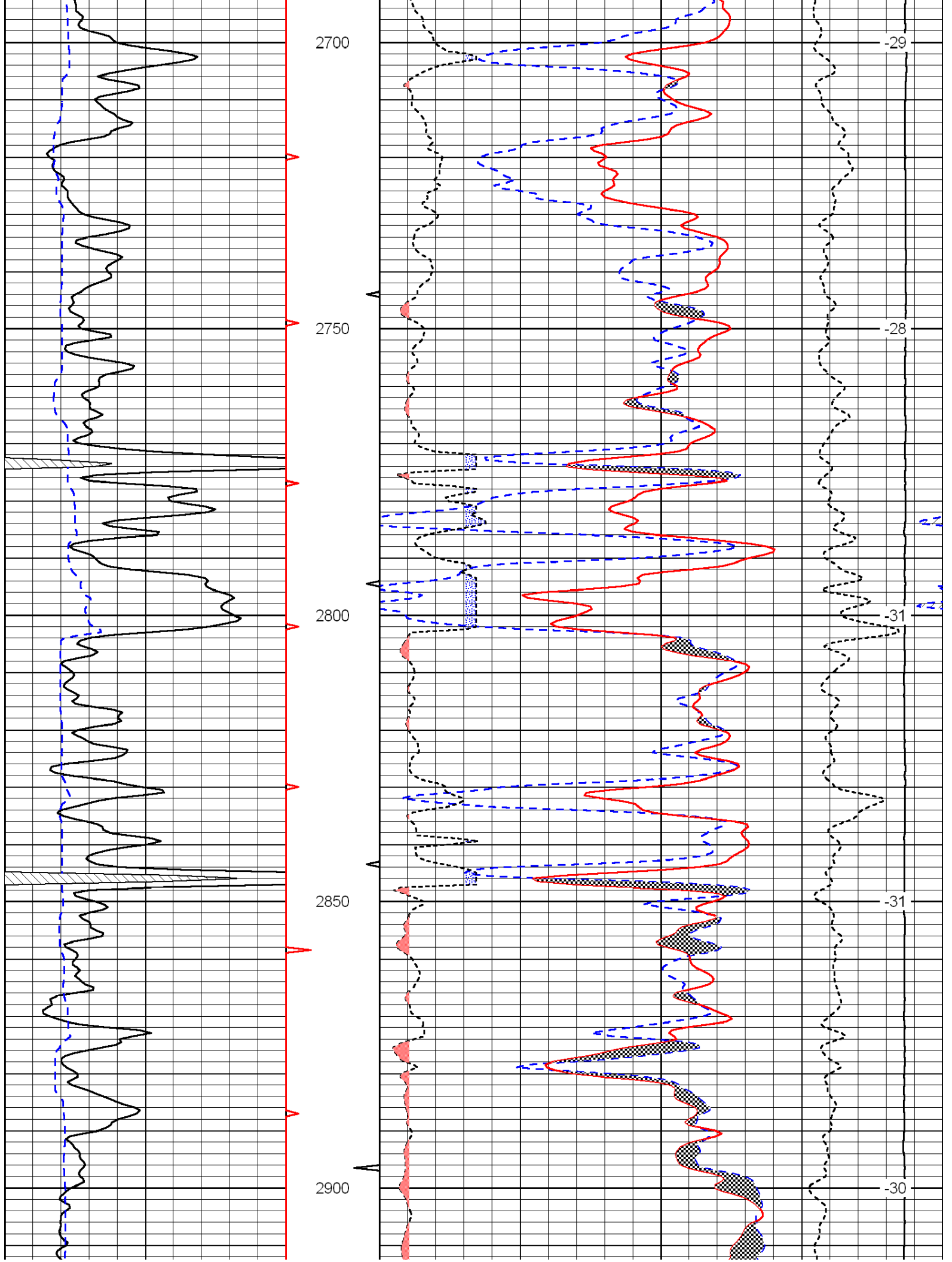


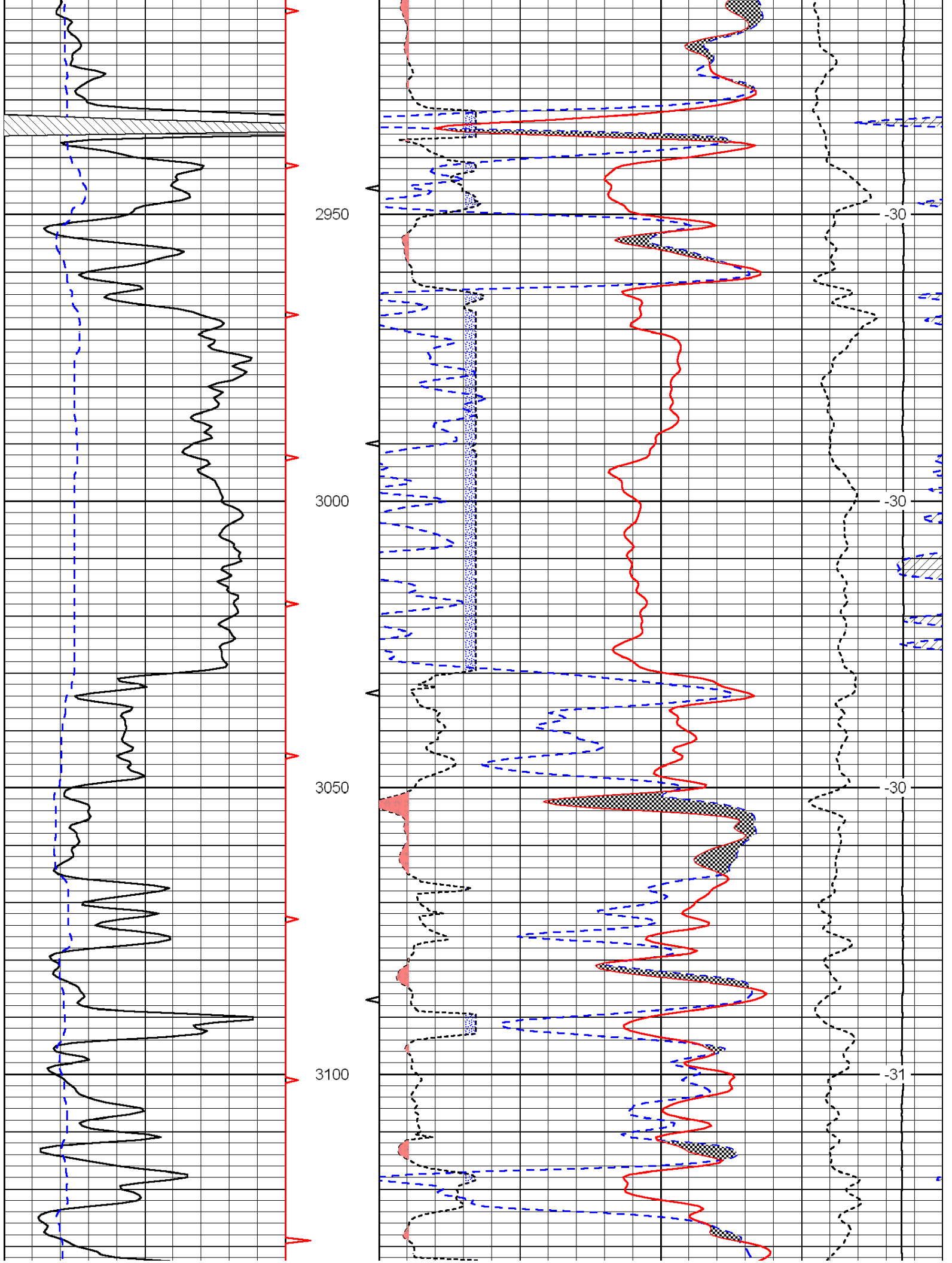




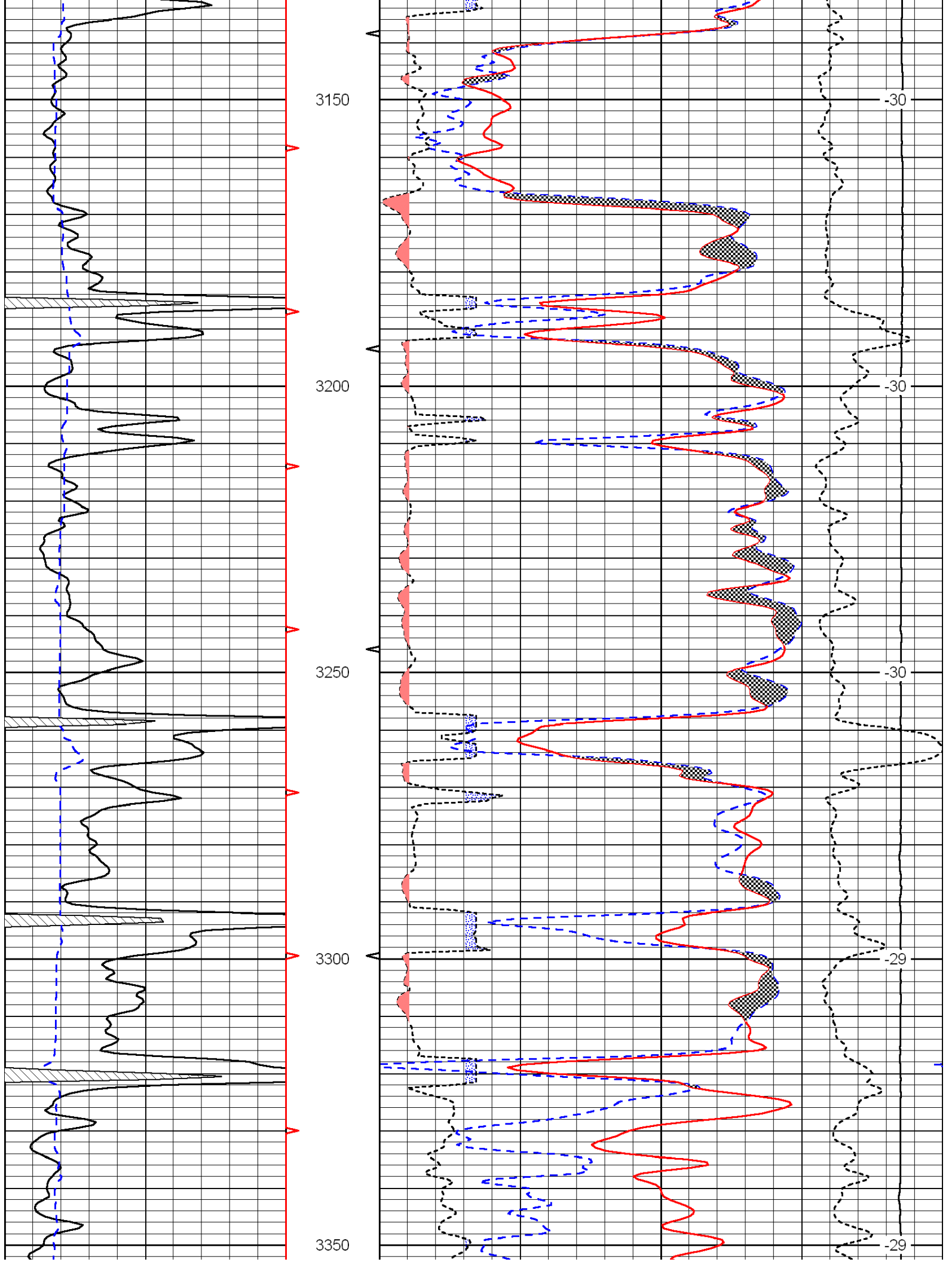


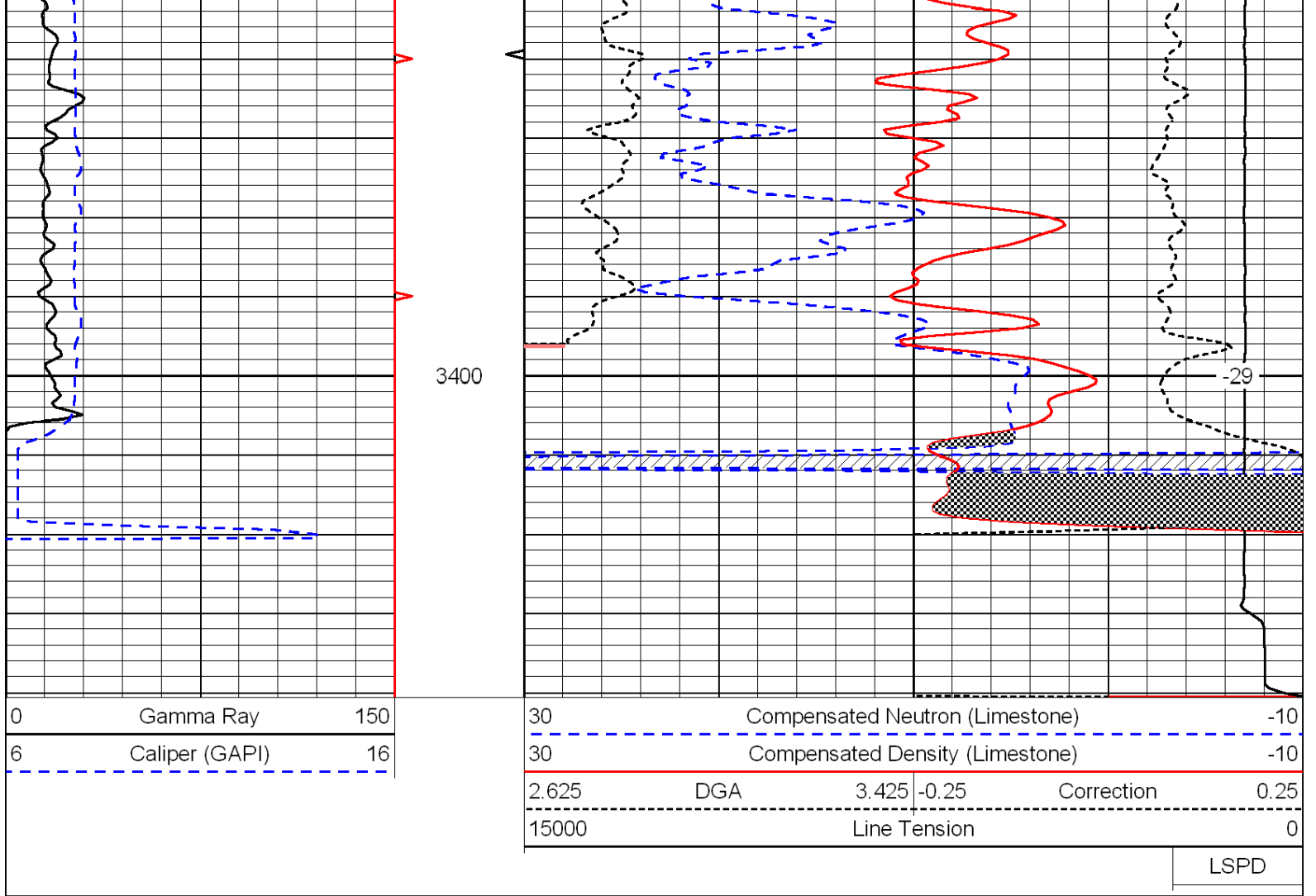












# Sandstone Matrix (2.68)

Database File: c:\warrior\data\empire energy\_esfeld no. 9\empire\_esfeld\_9hd.db  
 Dataset Pathname: dil/empsst  
 Presentation Format: cndldolo  
 Dataset Creation: Thu Aug 11 15:58:29 2011  
 Charted by: Depth in Feet scaled 1:240

