



**MIDWEST SURVEYS**  
 LOGGING - PERFORATING - CONSULTING SERVICES  
 P.O. Box 68, Osawatomie, KS 66064  
 913 / 766 - 2128

**GAMMA RAY / NEUTRON / CCL**

API # 15-107-24,547

File No.

Company Bobcat Oilfield Services, Inc.

Well Snyder No. O-19

Field Cadmus / LaCygne

County Linn State Kansas

Location 4023' FSL & 2203' FEL  
SE-SW-NW-NE

Sec. 8 Twp. 20s Rge. 23e

Permanent Datum GL  
Log Measured From GL  
Drilling Measured From GL

Other Services Perforate  
Elevation NA  
KB NA  
DF NA  
GL NA

Date 10-04-2011

Run Number One

Depth Driller 328.0

Depth Logger 321.5

Bottom Logged Interval 320.5

Top Log Interval 20.0

Fluid Level Full

Type Fluid Water

Density / Viscosity NA

Salinity - PPM Cl NA

Max Recorded Temp NA

Estimated Cement Top 0.0

Equipment No. Location 104 Osawatomie

Recorded By Gary Whridish

Whished By Bob Eberhart

BORE-HOLE RECORD				CASING RECORD			
Run No.	BIT	FROM	TO	SIZE	WGT.	FROM	TO
One	8.75"	0.0	20.0	6.00"	0.0	0.0	20.0
Two	5.625"	20.0	328.0	2.875"	0.0	0.0	322.0

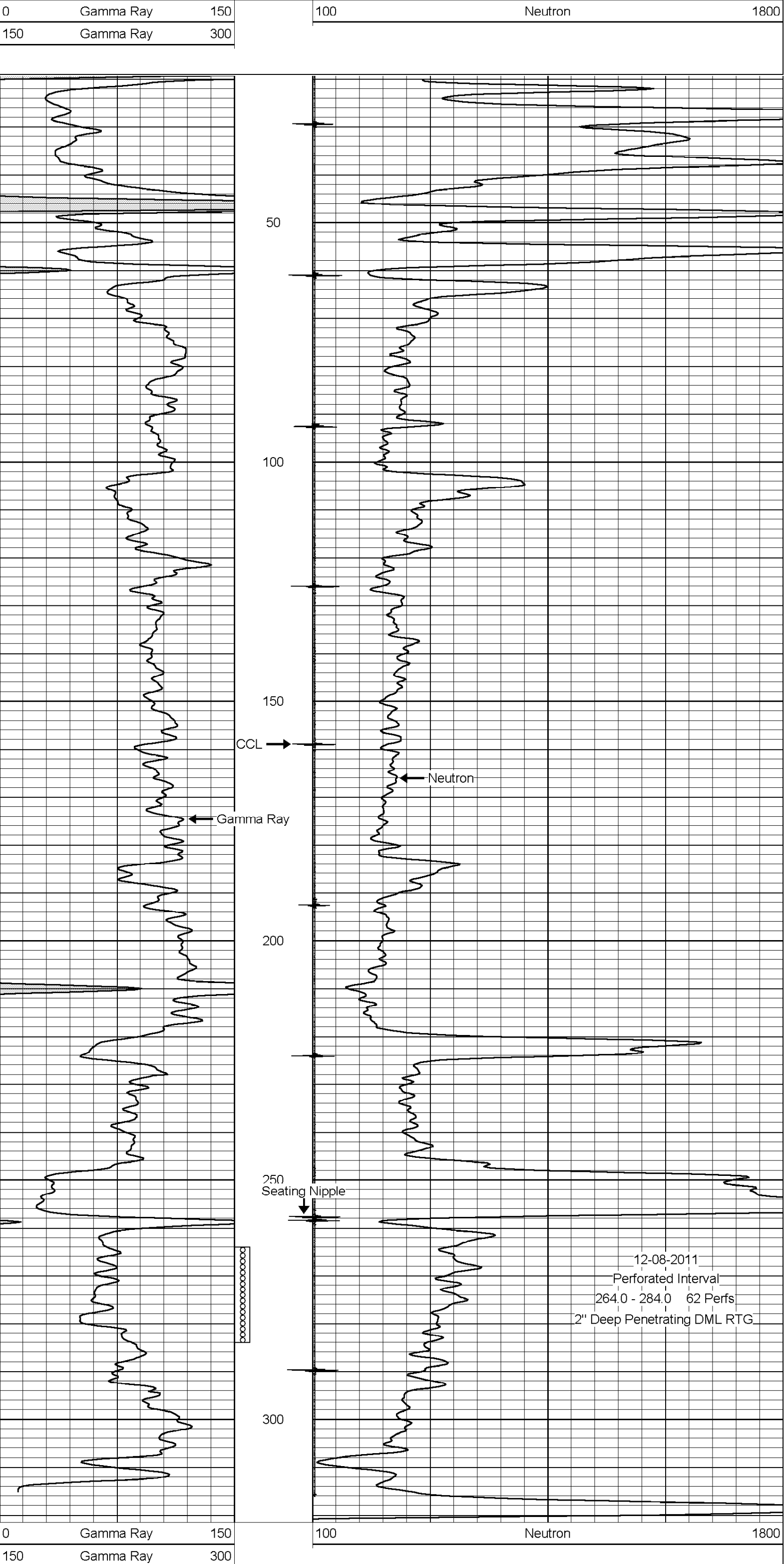
<<< Fold Here >>>

All interpretations are opinions based on inferences from electrical or other measurements and we cannot and do not guarantee the accuracy or correctness of any interpretation, and we shall not, except in the case of gross or willful negligence on our part, be liable or responsible for any loss, costs, damages, or expenses incurred or sustained by anyone resulting from any interpretation made by any of our officers, agents or employees. These interpretations are also subject to our general terms and conditions set out in our current Price Schedule.

Comments

Drilling Contractor :  
Dale Jackson Production Company

Database File: sndr19o.db  
 Dataset Pathname: pass1  
 Presentation Format: gr-n-ccl  
 Dataset Creation: Tue Oct 04 09:53:57 2011 by Log Warrior Version 6.6  
 Charted by: Depth in Feet scaled 1:240



BORE-HOLE RECORD				CASING RECORD			
Run No.	BIT	FROM	TO	SIZE	WGT.	FROM	TO
One	8.75"	0.0	20.0	6.00"	0.0	0.0	20.0
Two	5.625"	20.0	328.0	2.875"	0.0	0.0	322.0