

**SUPERIOR
Hays,
Kansas**

**MICRO
LOG**

Company **CORAL COAST PETROLEUM, L.C.**
Well **STEPHENS #2**
Field **MORRISON N.E.**
County **CLARK** State **KANSAS**

Company **CORAL COAST PETROLEUM, L.C.**
Well **STEPHENS #2**
Field **MORRISON N.E.**
County **CLARK**
State **KANSAS**

Location: **API # : 15-025-21527**
1170' FSL & 890' FWL
SEC 15 TWP 32S RGE 21W
Permanent Datum **GROUND LEVEL** Elevation **2053**
Log Measured From **KELLY BUSHING 10' A.G.L.**
Drilling Measured From **KELLY BUSHING**
Other Services **CDL/CNL/PE DIL/MEL**
Elevation **K.B. 2063 D.F. G.L. 2053**

Date	8-12-11
Run Number	TW0
Depth Driller	6750
Depth Logger	6749
Bottom Logged Interval	6732
Top Log Interval	4200
Casing Driller	681
Casing Logger	681
Bit Size	7.875
Type Fluid in Hole	CHEMICAL MUD
Density / Viscosity	9.0 / 53
pH / Fluid Loss	10.0 / 9.0
Source of Sample	FLOWLINE
Rm @ Meas. Temp	0.50 @ 98F
Rmf @ Meas. Temp	0.38 @ 98F
Rmc @ Meas. Temp	0.60 @ 98F
Source of Rmf / Rmc	MEASURED
Rm @ BHT	.350 @ 142F
Time Circulation Stopped	3 HOURS
Time Logger on Bottom	2:15 P.M.
Maximum Recorded Temperature	142F
Equipment Number	860
Location	HAYS, KS.
Recorded By	RUPP
Witnessed By	KEITH REAVIS

<<< Fold Here >>>

All interpretations are opinions based on inferences from electrical or other measurements and we cannot and do not guarantee the accuracy or correctness of any interpretation, and we shall not, except in the case of gross or willful negligence on our part, be liable or responsible for any loss, costs, damages, or expenses incurred or sustained by anyone resulting from any interpretation made by any of our officers, agents or employees. These interpretations are also subject to our general terms and conditions set out in our current Price Schedule.

Comments

SUPERIOR WELL SERVICES
785-628-6395
THANK YOU FOR YOUR BUSINESS
DIRECTIONS: BUCKLIN, S TO C.L., S FURTHER TO RD. "R", 4E, 2N, W INTO.



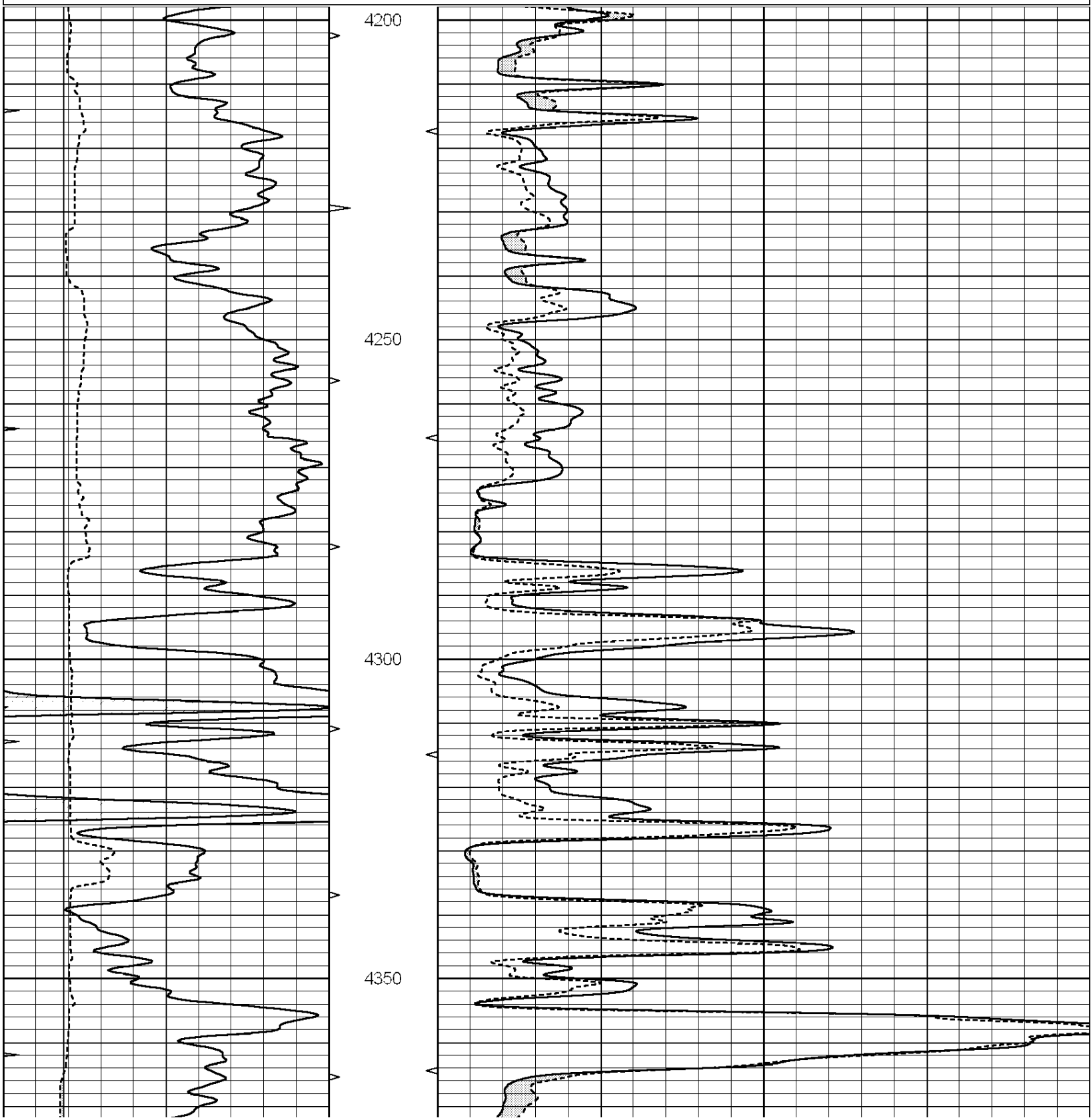
**SUPERIOR
Hays,
Kansas**

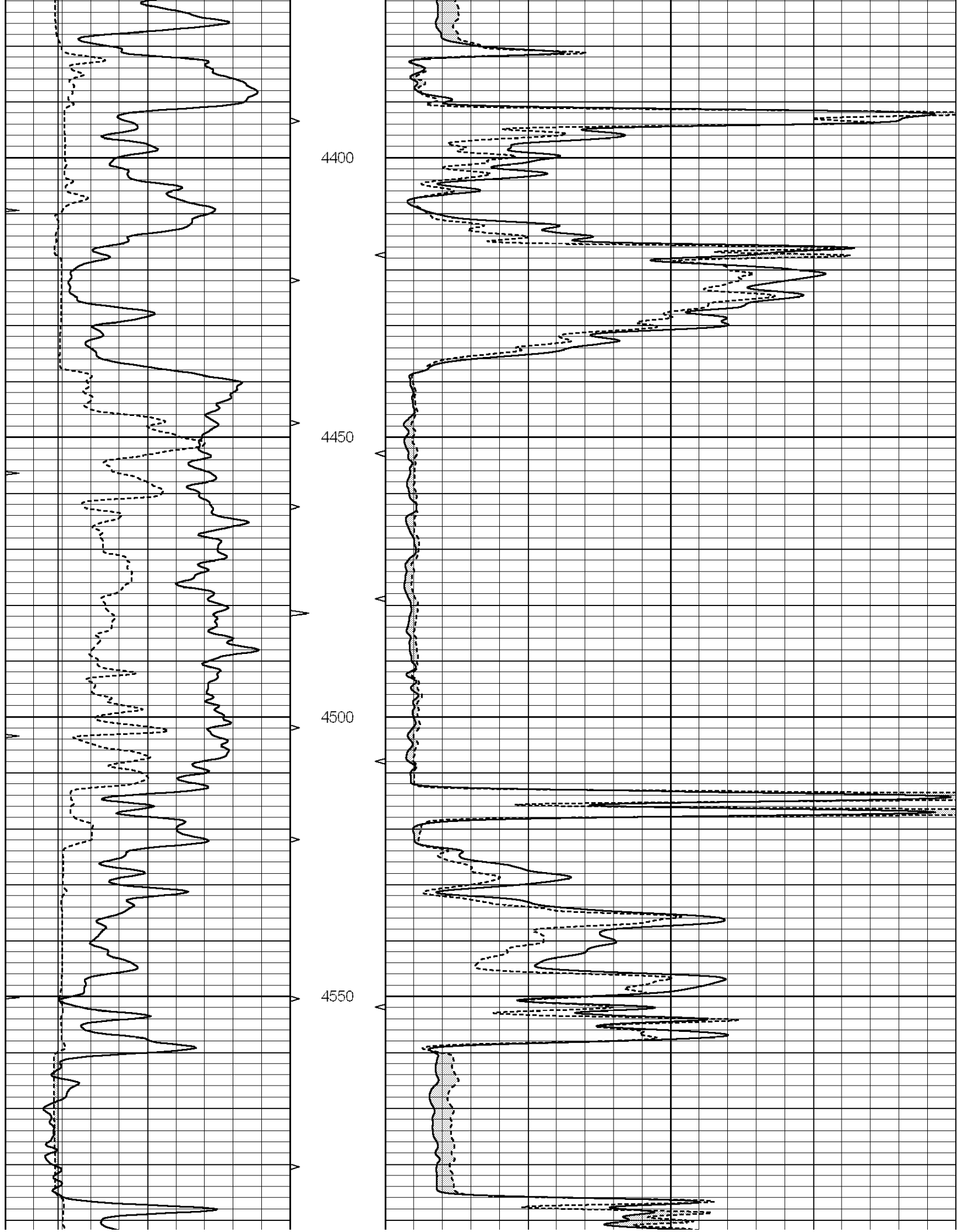
MAIN SECTION

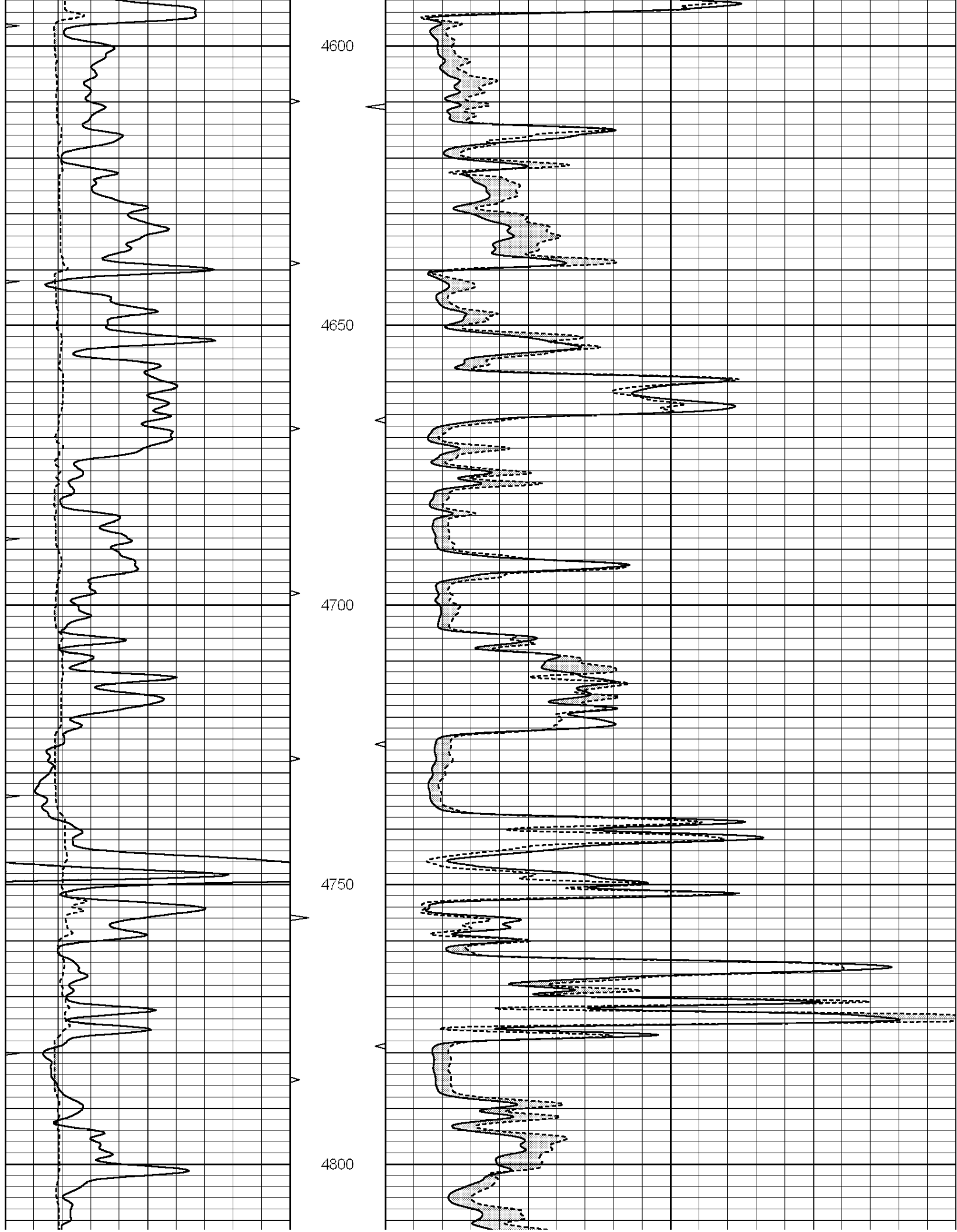
Database File: 007347pdr.db
 Dataset Pathname: pass51A
 Presentation Format: micro
 Dataset Creation: Fri Aug 12 19:28:03 2011
 Charted by: Depth in Feet scaled 1:240

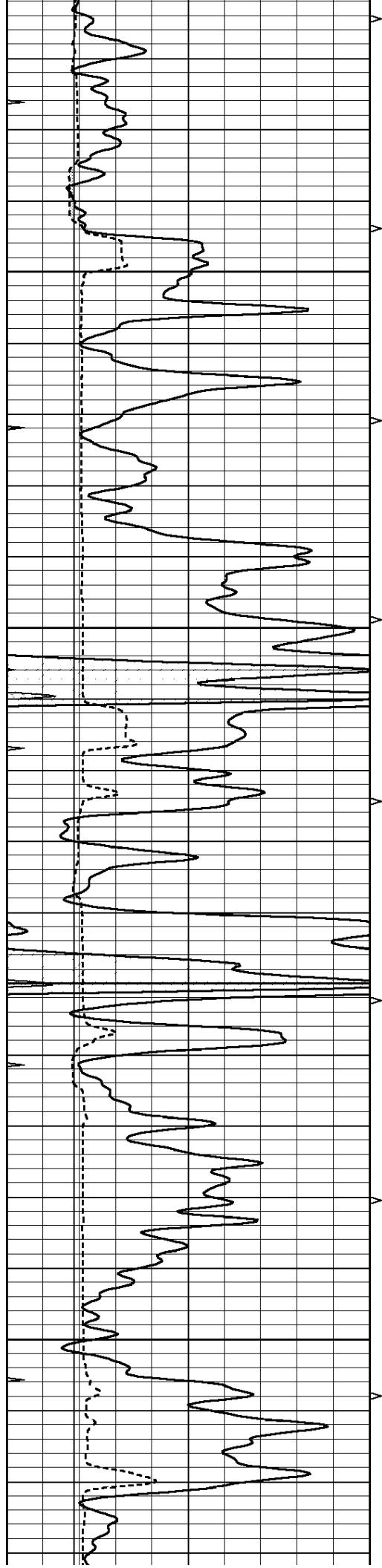
0	GAMMA RAY (GAPI)	150
6	MELCAL (in)	16
0	MINMK	20

0	MEL1.5 (Ohm-m)	40
0	MEL2.0 (Ohm-m)	40







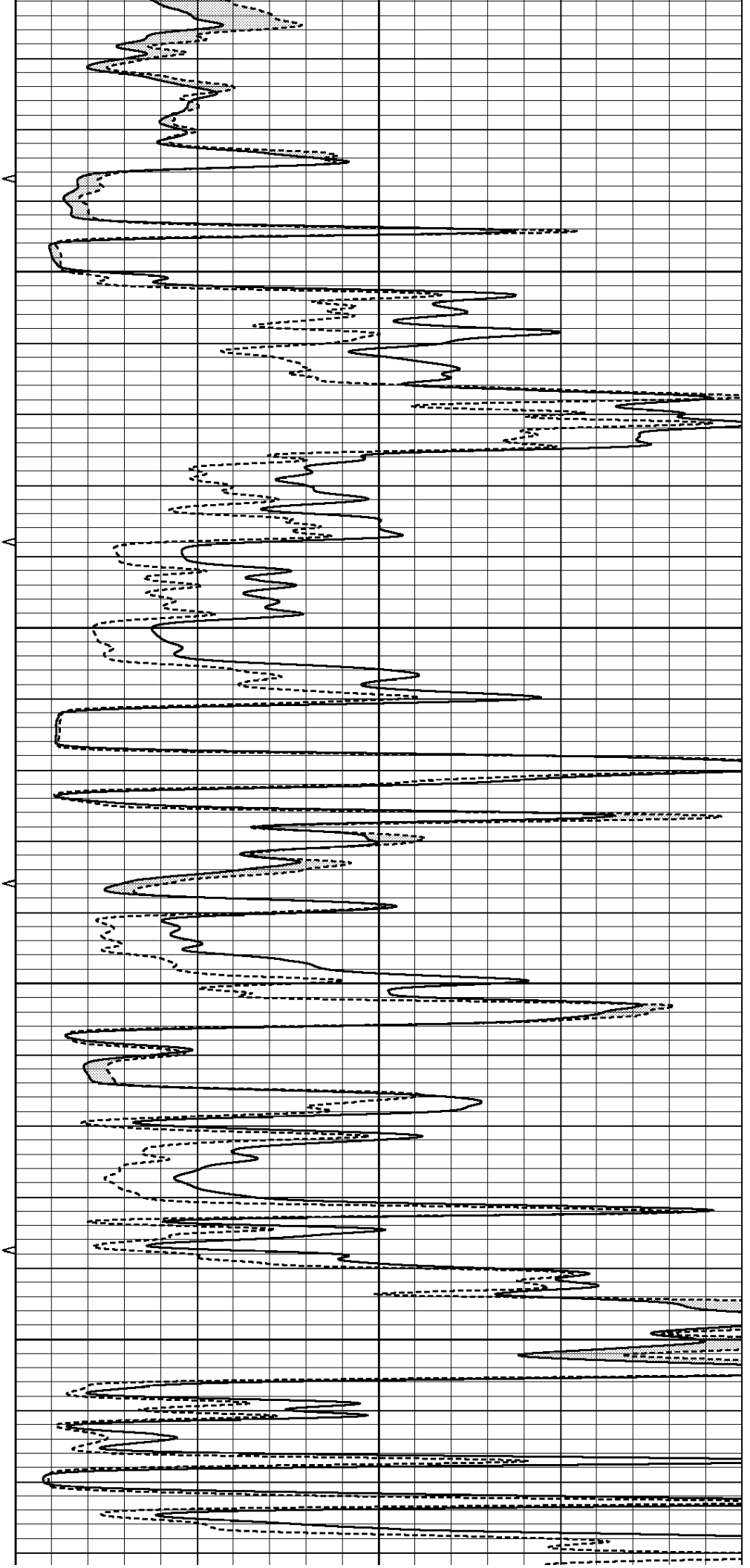


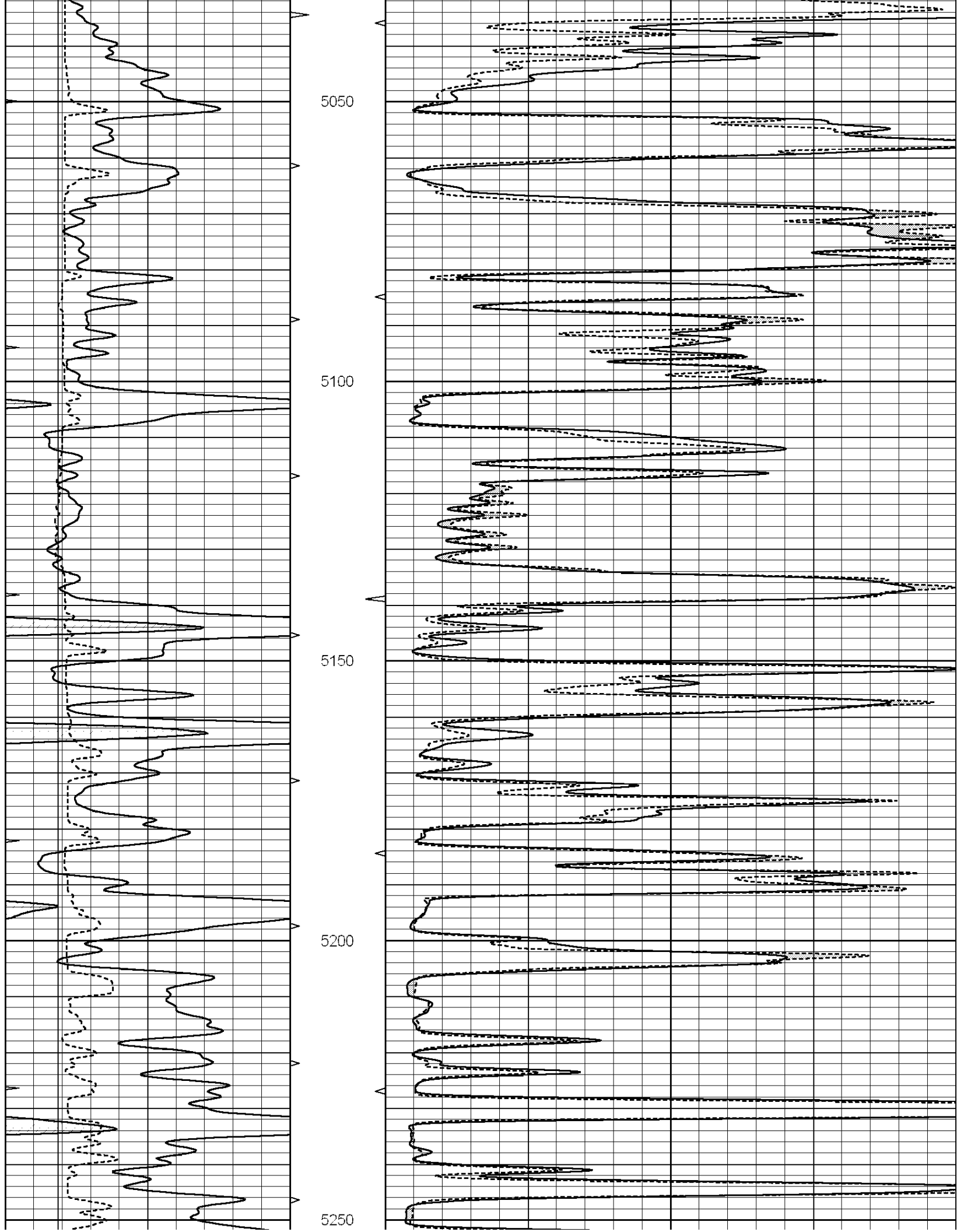
4850

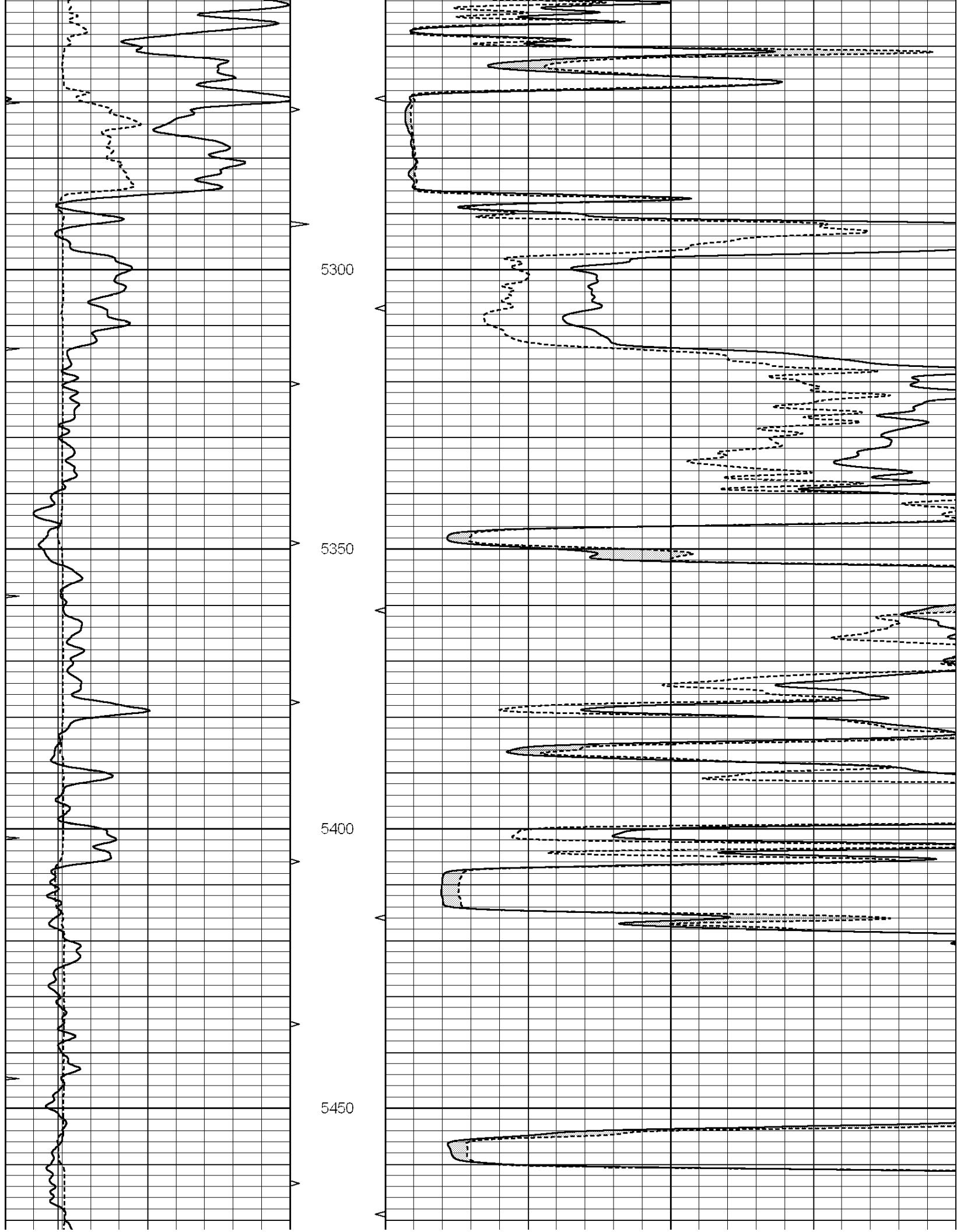
4900

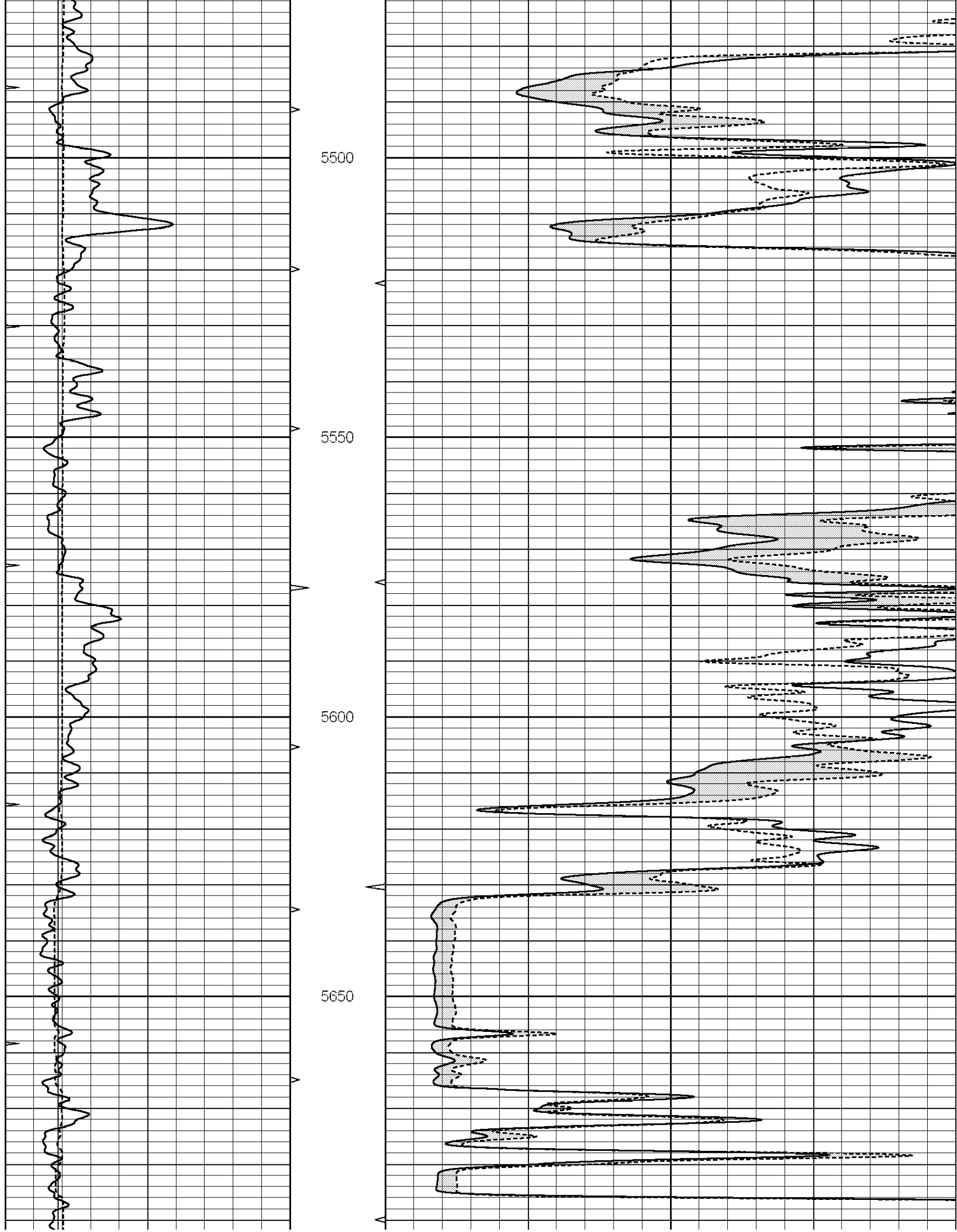
4950

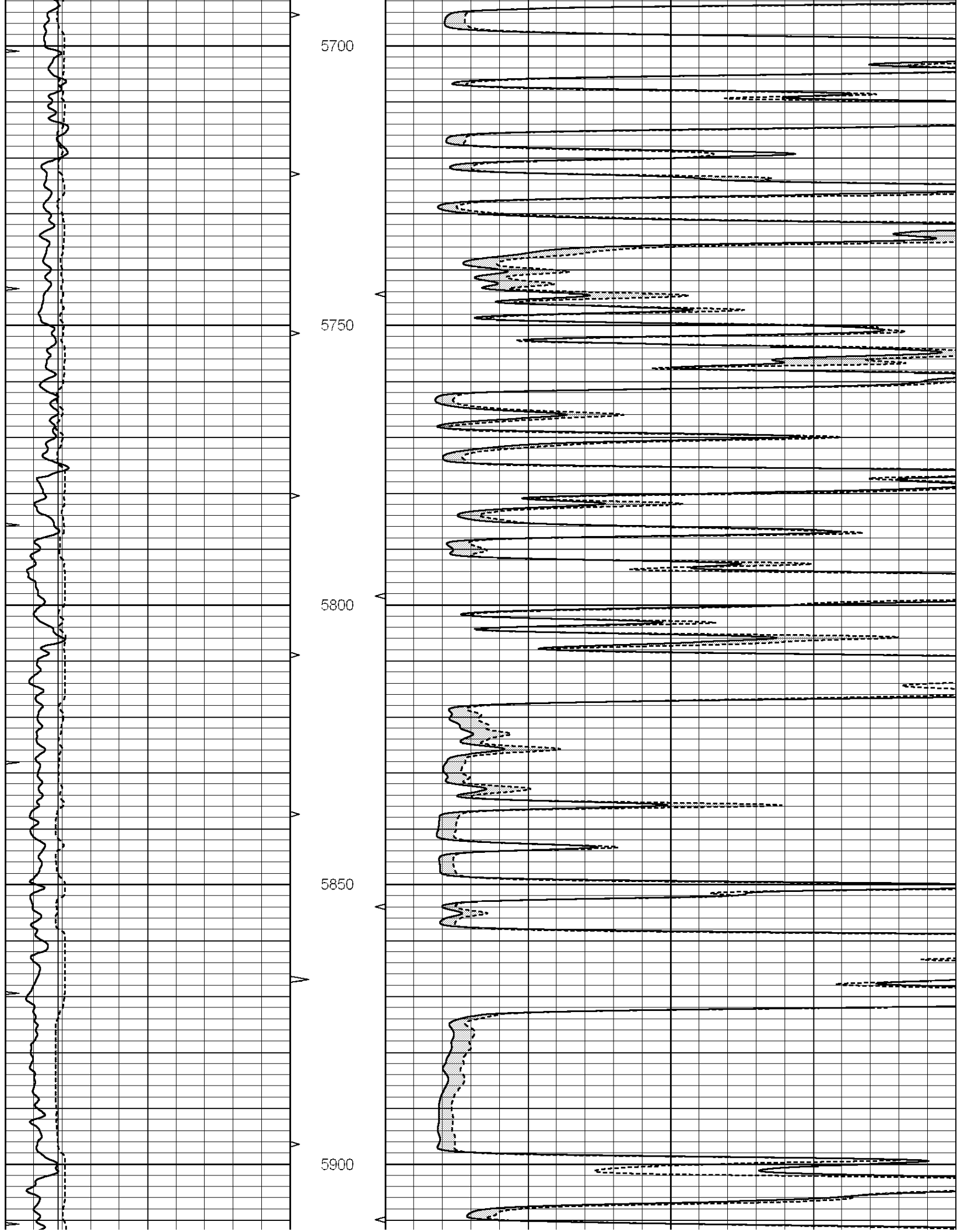
5000

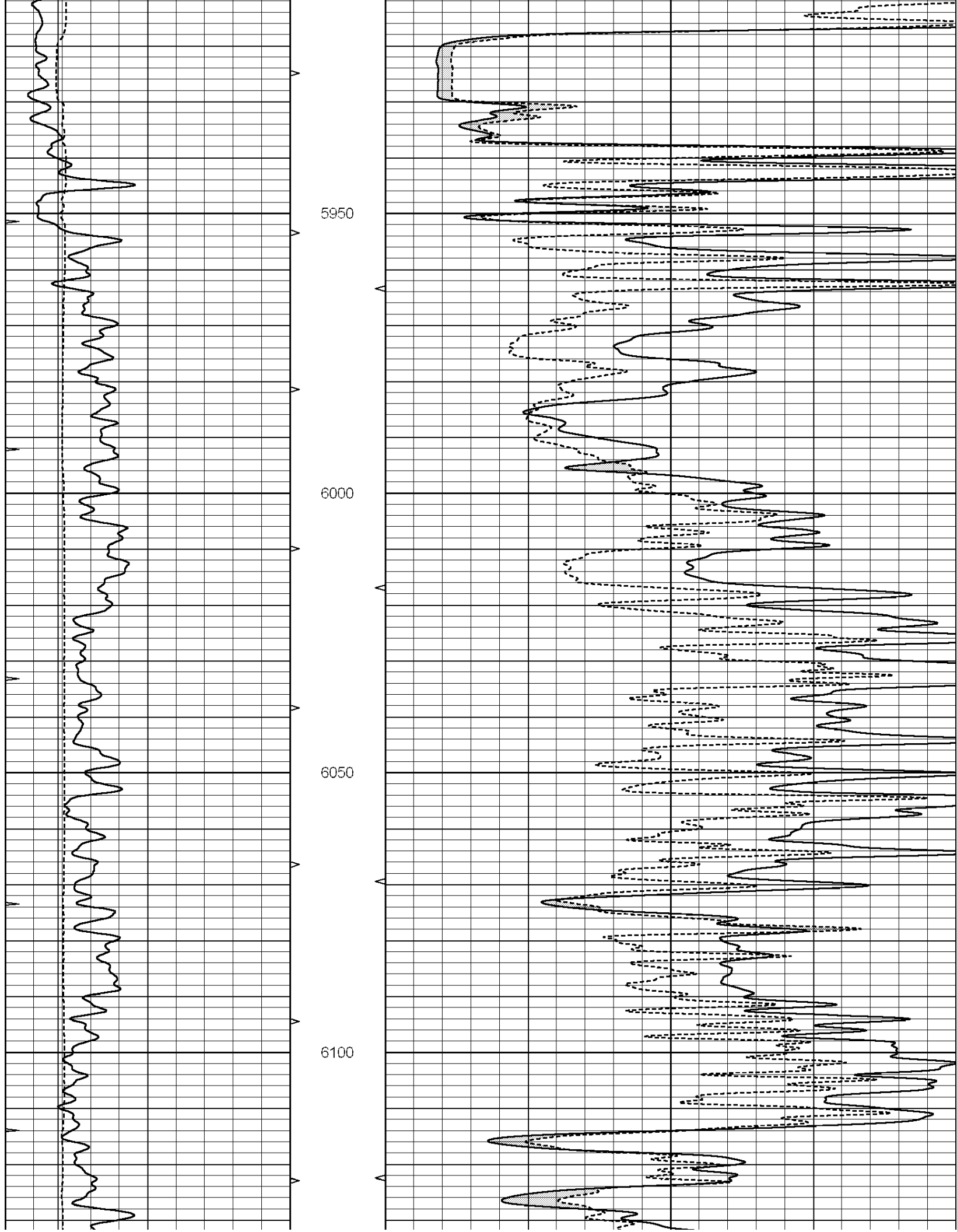


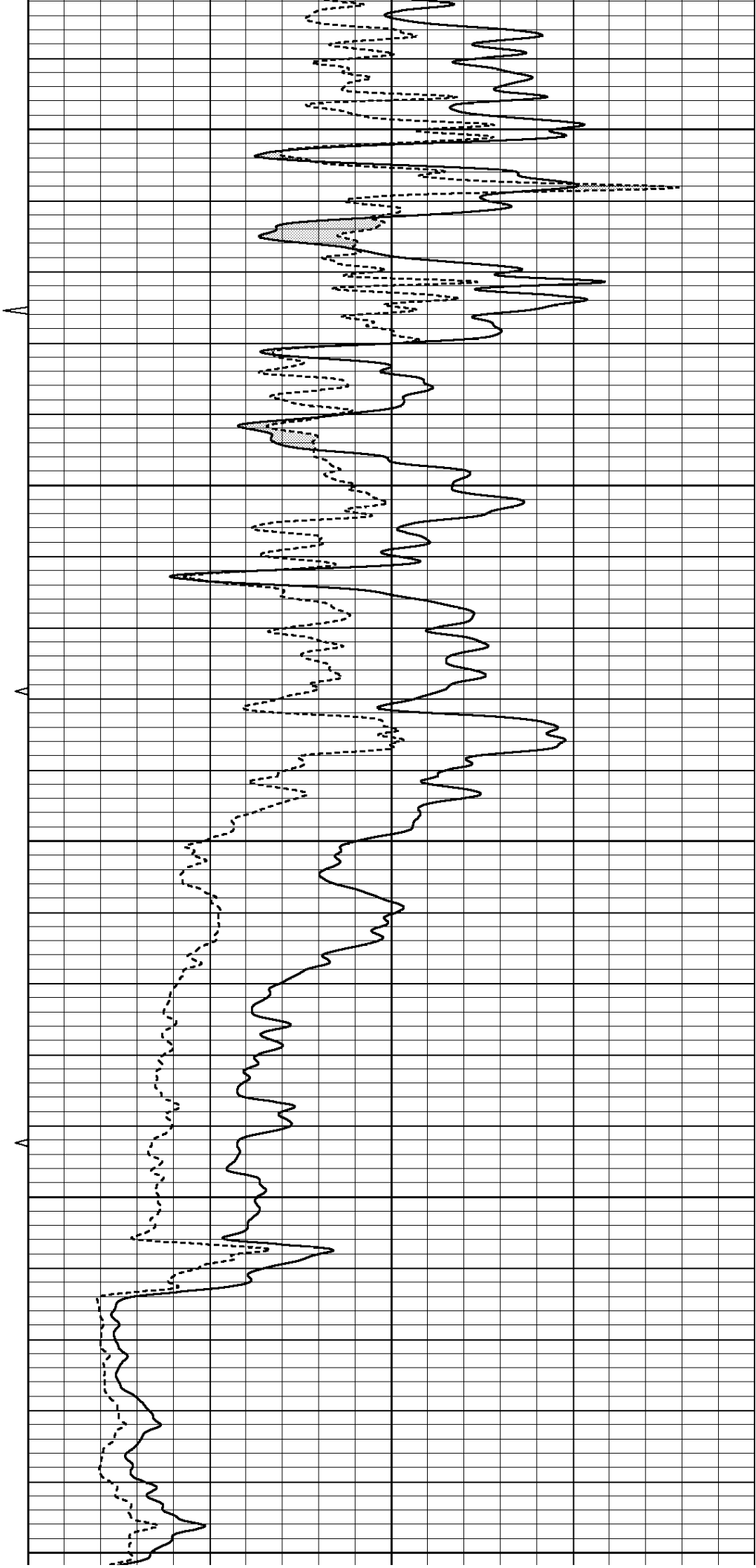
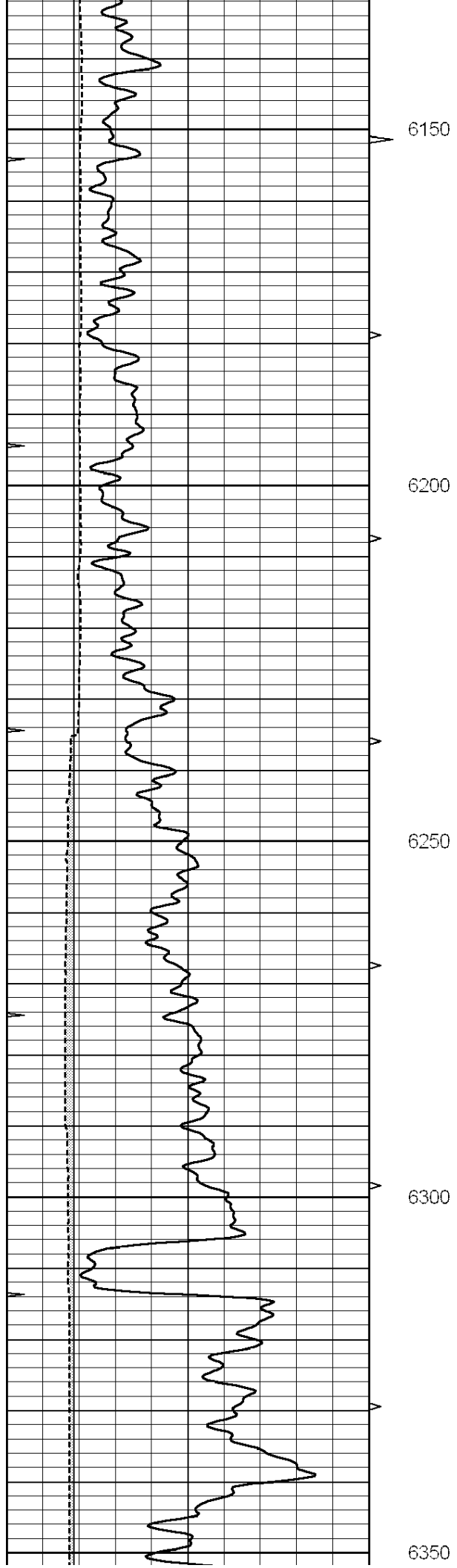


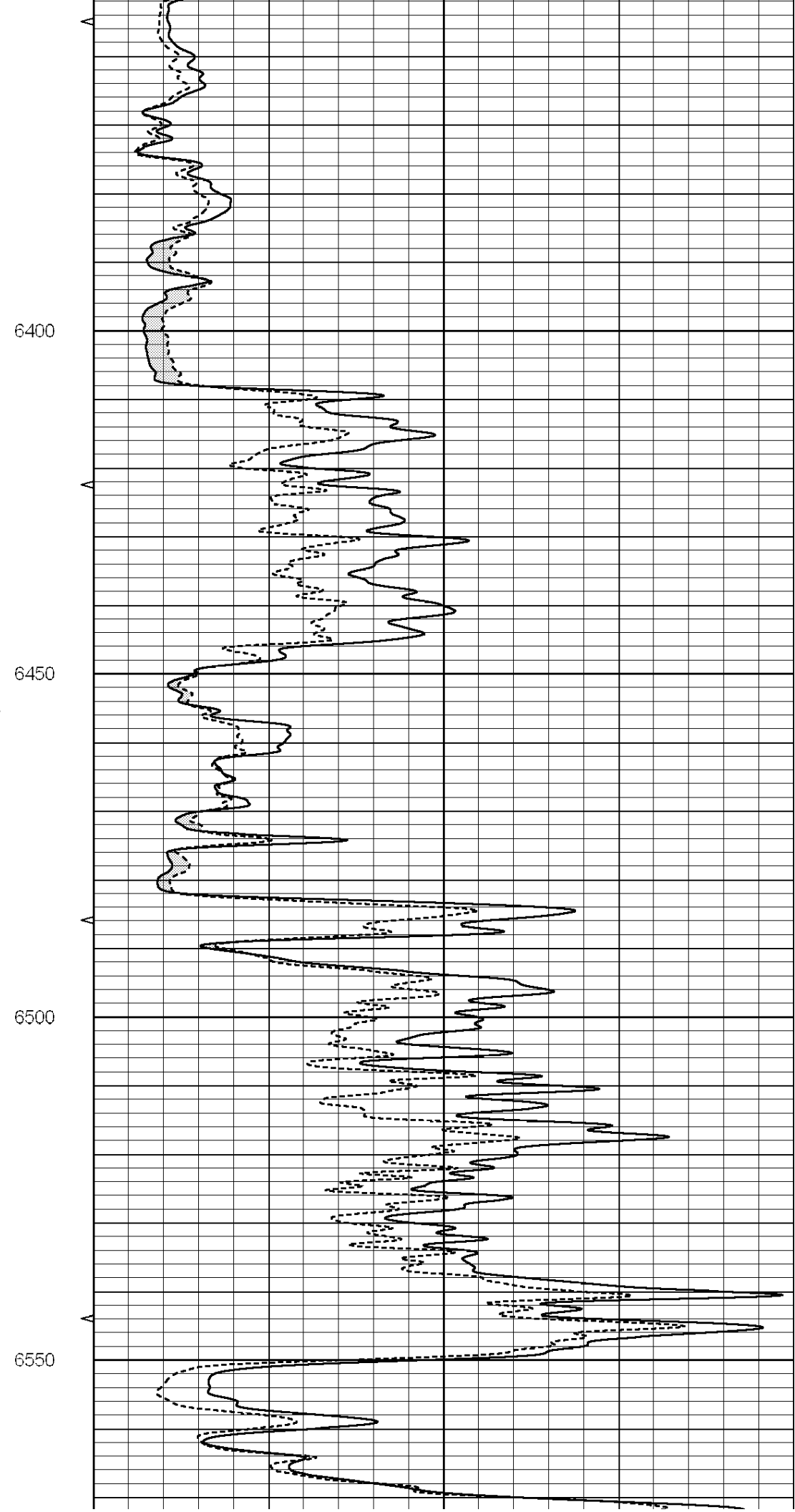
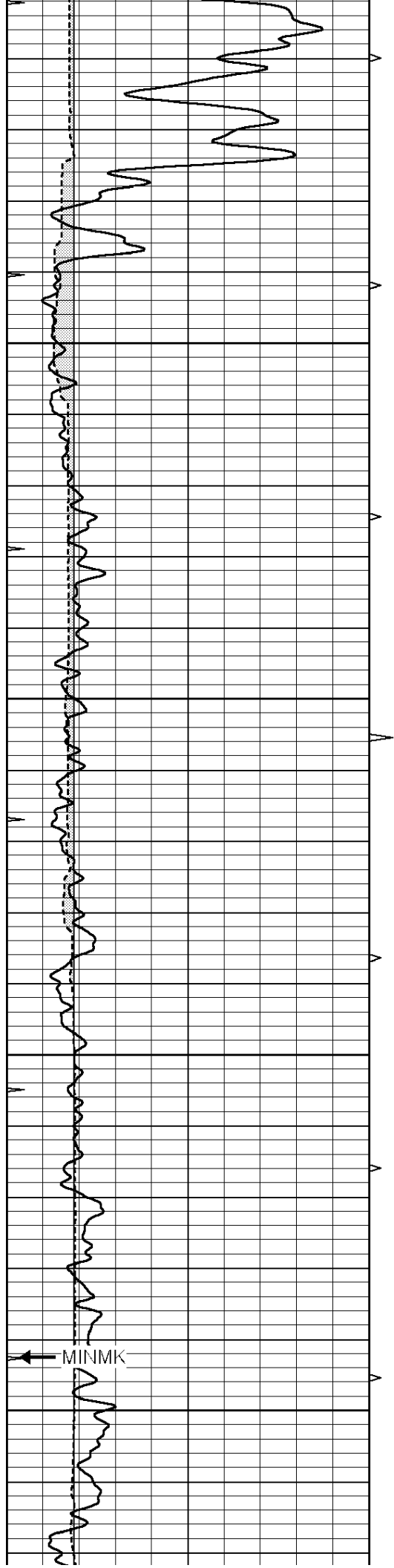


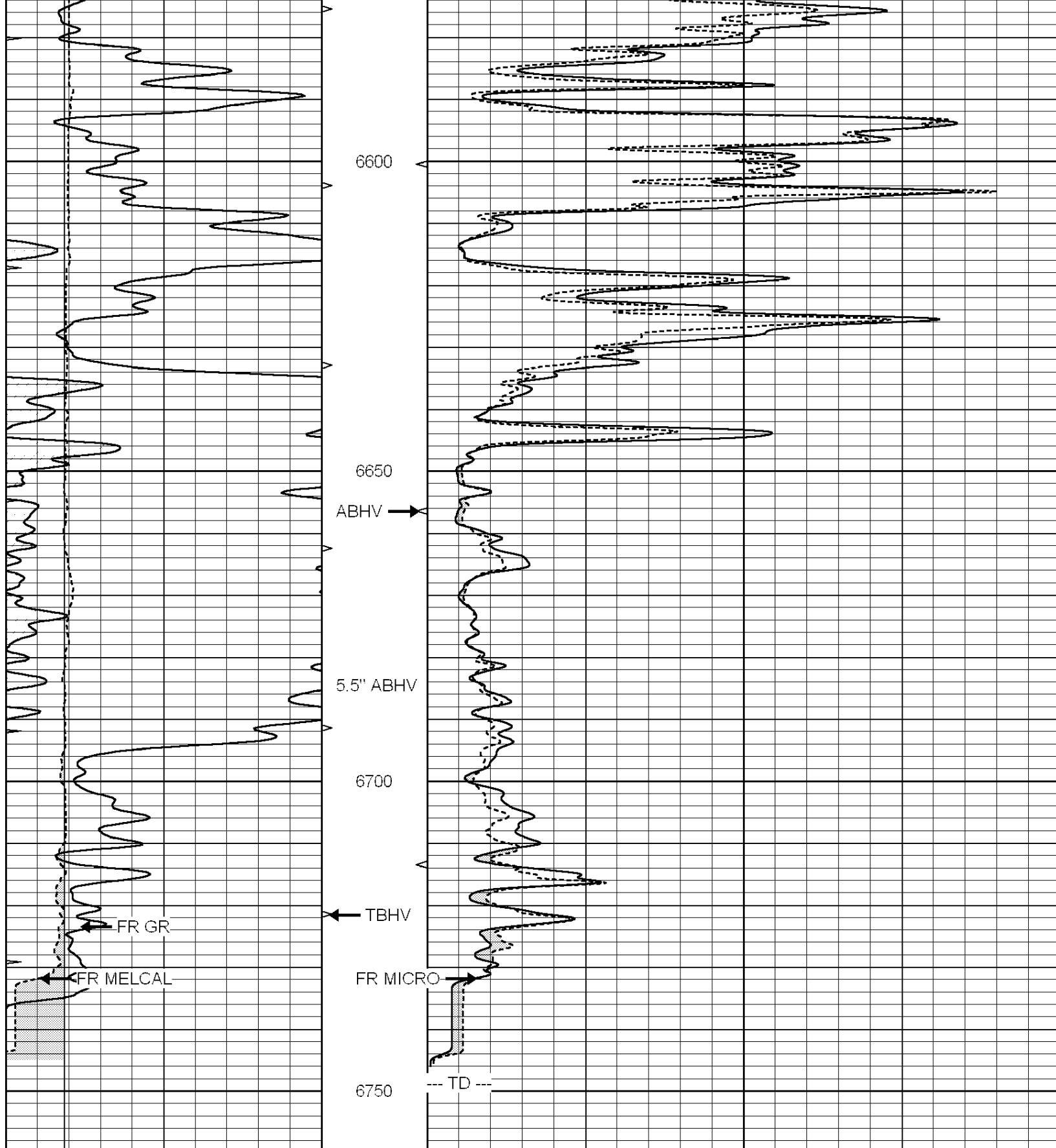












0	GAMMA RAY (GAPI)	150
6	MELCAL (in)	16
0	MINMK	20

0	MEL1.5 (Ohm-m)	40
0	MEL2.0 (Ohm-m)	40





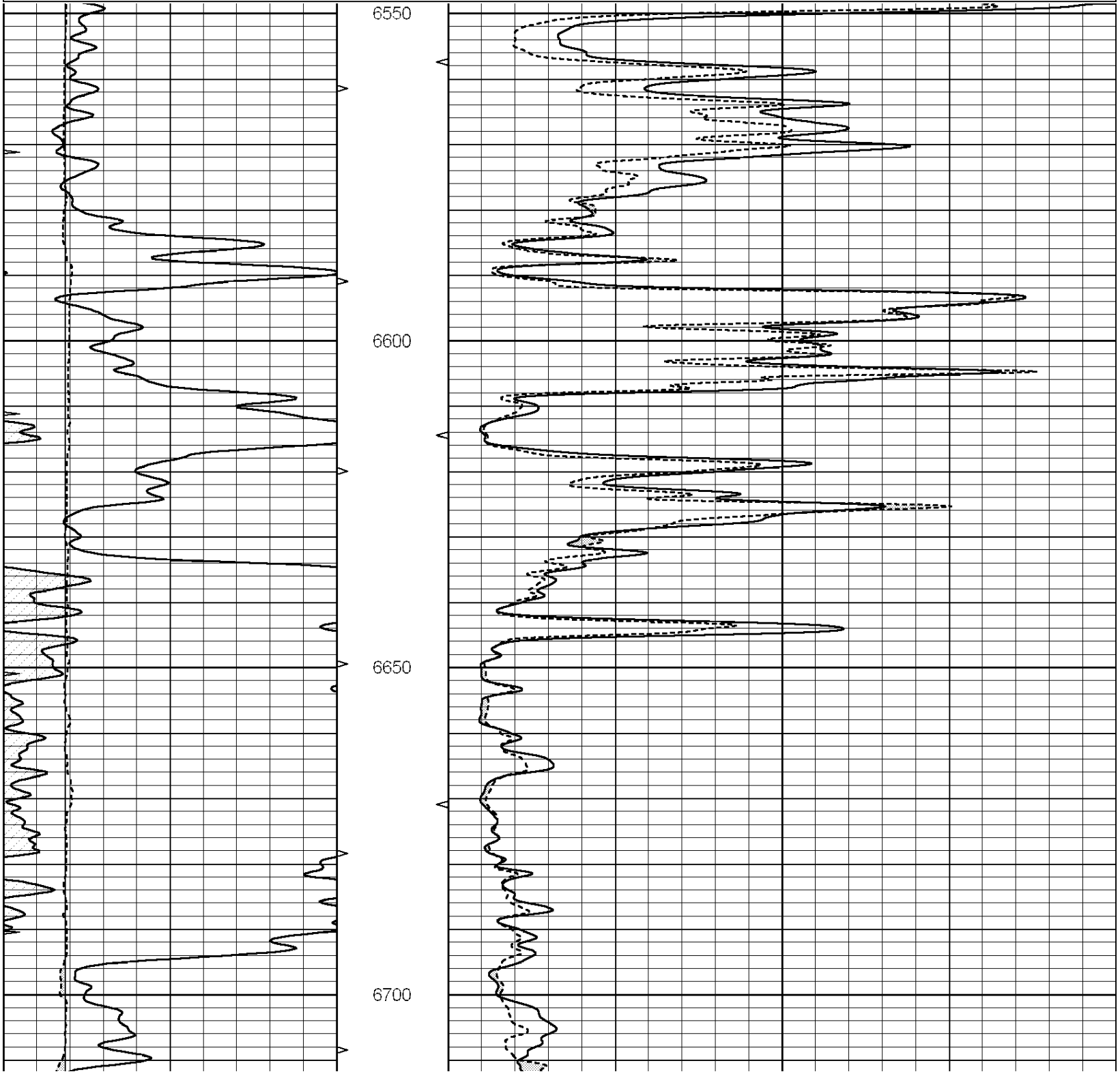
SUPERIOR
Hays,
Kansas

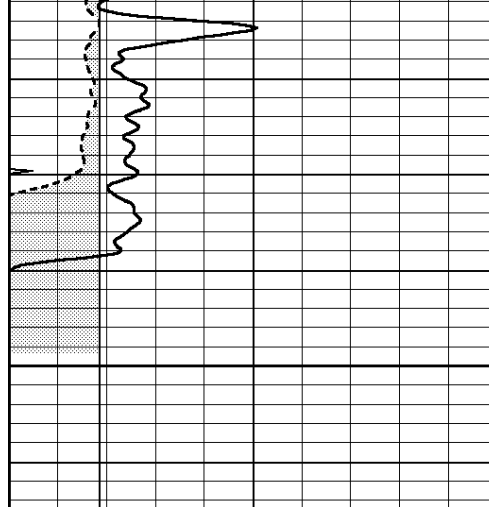
REPEAT SECTION

Database File: 007347pdn.db
 Dataset Pathname: pass4
 Presentation Format: micro
 Dataset Creation: Fri Aug 12 17:08:32 2011 by Log Open-Cased 090629
 Charted by: Depth in Feet scaled 1:240

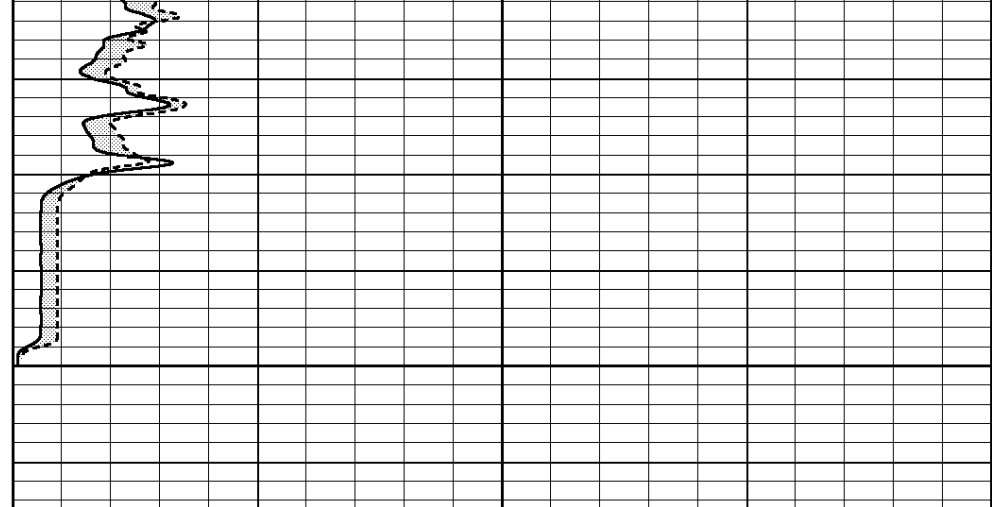
0	GAMMA RAY (GAPI)	150
6	MELCAL (in)	16
0	MINMK	20

0	MEL1.5 (Ohm-m)	40
0	MEL2.0 (Ohm-m)	40





6750



0	GAMMA RAY (GAPI)	150
6	MELCAL (in)	16
0	MINMK	20

0	MEL1.5 (Ohm-m)	40
0	MEL2.0 (Ohm-m)	40

Calibration Report

Database File: 007347pdn.db
 Dataset Pathname: pass4
 Dataset Creation: Fri Aug 12 17:08:32 2011 by Log Open-Cased 090629

MICRO Calibration Report

Serial Number:	Micro1	
Tool Model:	ProbeL	
Performed:	Fri Aug 12 16:52:32 2011	
Caliper Calibration:	Gain=2.754	Offset=-1.205
References	Low Cal	High Cal
Readings	7.700	13.000
	3.233	5.157
1.5" Calibration:	Gain=40.000	Offset=0.200
References	Low Cal	High Cal
Readings	0.000	20.000
	0.003	0.844
2" Calibration:	Gain=28.000	Offset=0.400
References	Low Cal	High Cal
Readings	0.000	20.000
	0.028	0.817

Gamma Ray Calibration Report

Serial Number:	GR5	
Tool Model:	OPEN	
Performed:	Fri Aug 12 16:52:29 2011	
Calibrator Value:	1.0	GAPI
Background Reading:	0.0	cps
Calibrator Reading:	1.0	cps
Sensitivity:	0.6500	GAPI/cps