



Pioneer Energy Services

# Dual Induction Log

15-191-22,683-00-00

API No.

Company **Energy Investment Partners, LLC**  
 Well **Turek #1-16**  
 Field **Wildcat**  
 County **Sumner** State **Kansas**

Location  
 NW NE SW NW  
 1590' FNL & 840' FWL

Sec: 16 Twp: 34S Rge: 3W

Other Services  
 CNL/CDL  
 MEL/BHCS

Permanent Datum Ground Level Elevation 1212  
 Log Measured From Kelly Bushing 10 Ft. Above Perm. Datum  
 Drilling Measured From Kelly Bushing

Elevation  
 K.B. 1222  
 D.F. 1212  
 G.L. 1212

Date	5/8/2013	
Run Number	One	
Depth Driller	4880	
Depth Logger	4880	
Bottom Logged Interval	4879	
Top Log Interval	250	
Casing Driller	8.625 @ 275	
Casing Logger	274	
Bit Size	7.875	
Type Fluid in Hole	Chemical	
Salinity, ppm CL	6800	
Density / Viscosity	9.2   52	
pH / Fluid Loss	9.5   12.8	
Source of Sample	Flowline	
Rm @ Meas. Temp	0.20 @ 70	
Rmf @ Meas. Temp	0.15 @ 70	
Rmc @ Meas. Temp	0.27 @ 70	
Source of Rmf / Rmc	Charts	
Rm @ BHT	0.11 @ 125	
Operating Rig Time	6 Hours	
Max Rec. Temp. F	125	
Equipment Number	15	
Location	Hays	
Recorded By	D. Kerr	
Witnessed By	Denny Allison	

<<< Fold Here >>>

All interpretations are opinions based on inferences from electrical or other measurements and we cannot and do not guarantee the accuracy or correctness of any interpretation, and we shall not, except in the case of gross or willful negligence on our part, be liable or responsible for any loss, costs, damages, or expenses incurred or sustained by anyone resulting from any interpretation made by any of our officers, agents or employees. These interpretations are also subject to our general terms and conditions set out in our current Price Schedule.

### Comments

Thank you for using Log-Tech, Inc.  
 (785) 625-3858

Caldwell KS, 5 North to 130 RD,  
 3 West, 1/4 South, East Into

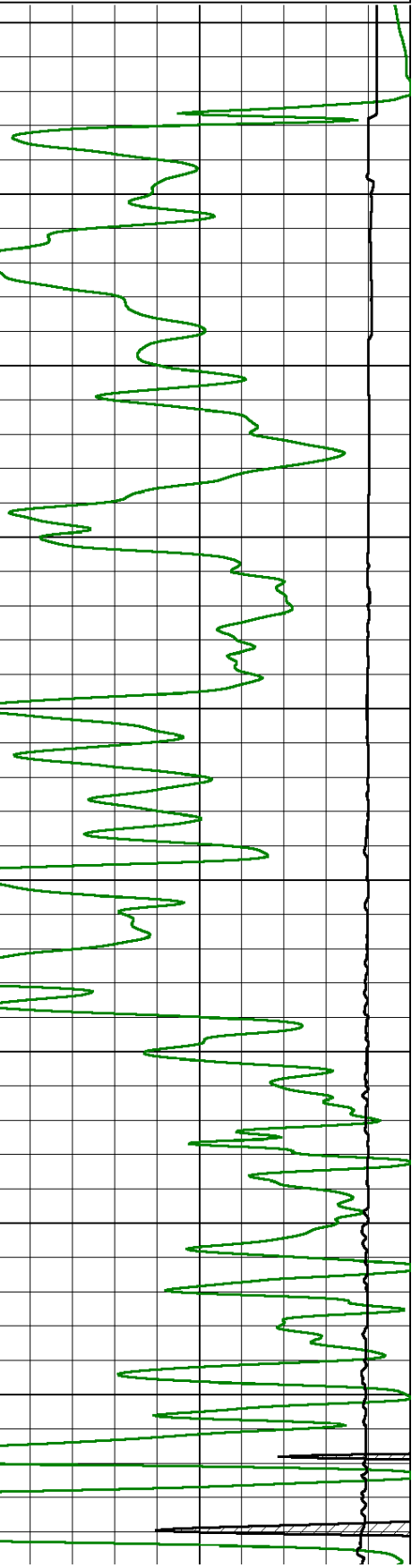
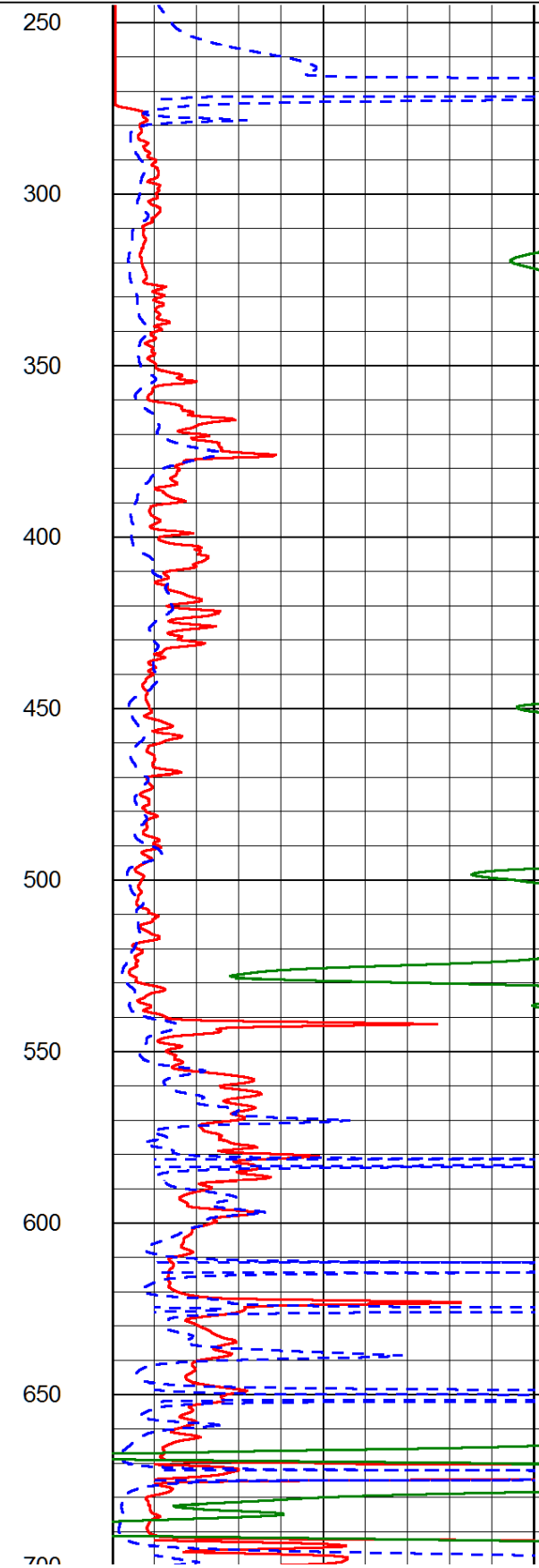
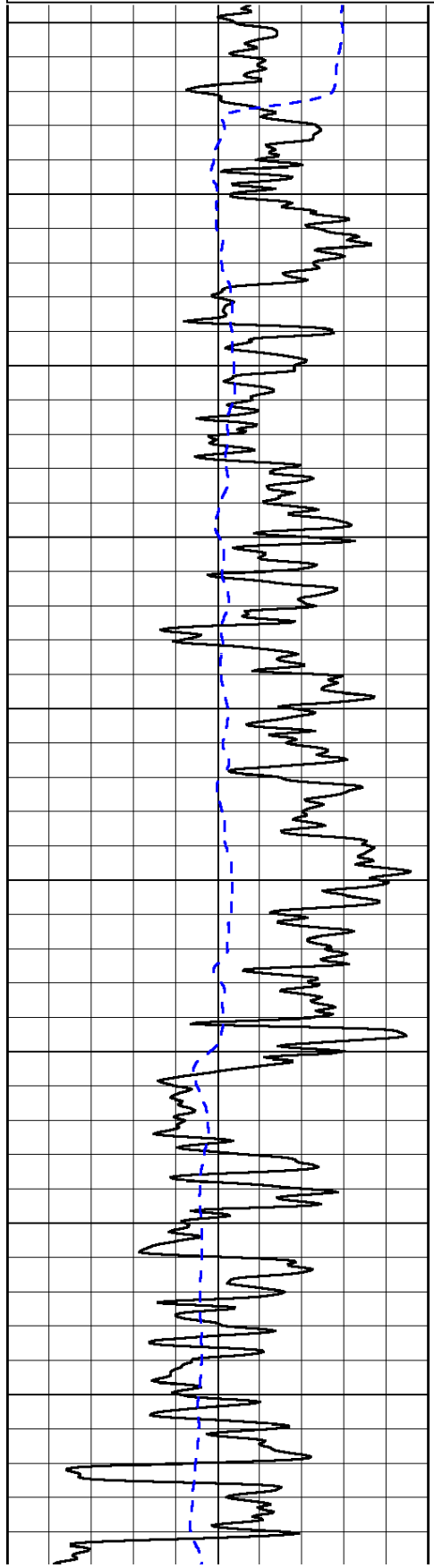
Database File: energyinvest\_turek\_1\_16hd.db  
 Dataset Pathname: DIL/engstk  
 Presentation Format: dil2in  
 Dataset Creation: Wed May 08 21:42:20 2013  
 Charted by: Depth in Feet scaled 1:600

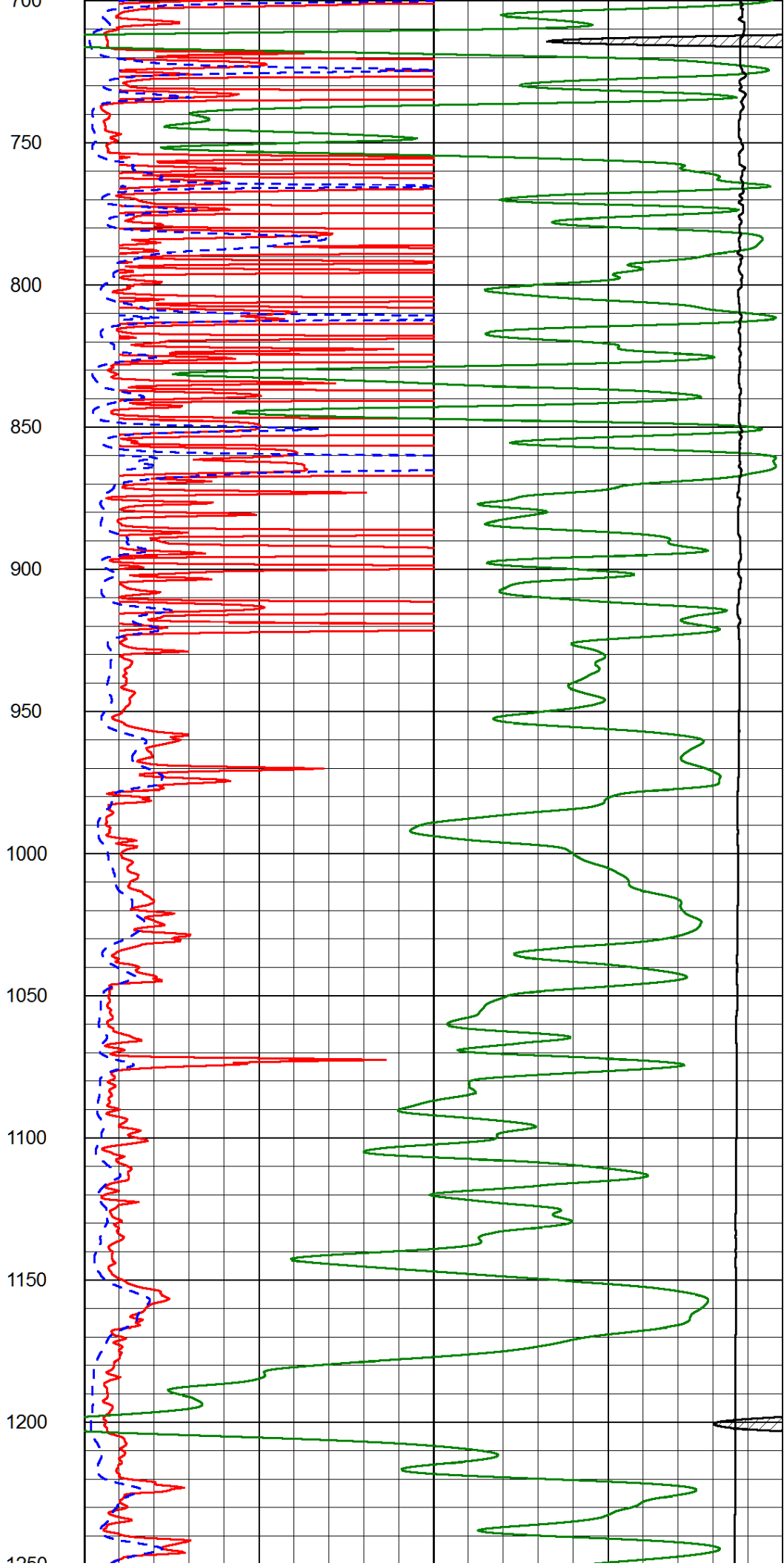
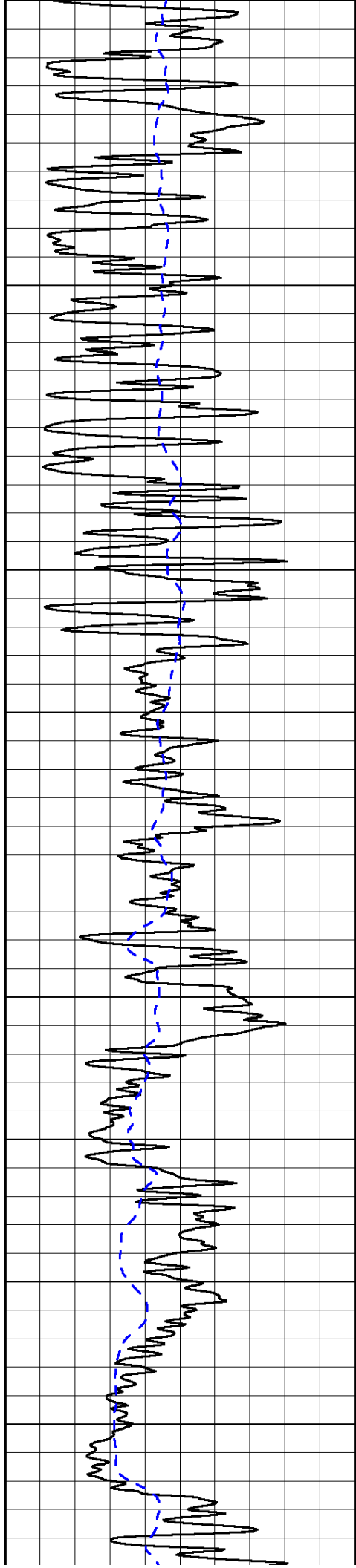
0	Gamma Ray (GAPI)	150
-200	SP (mV)	0

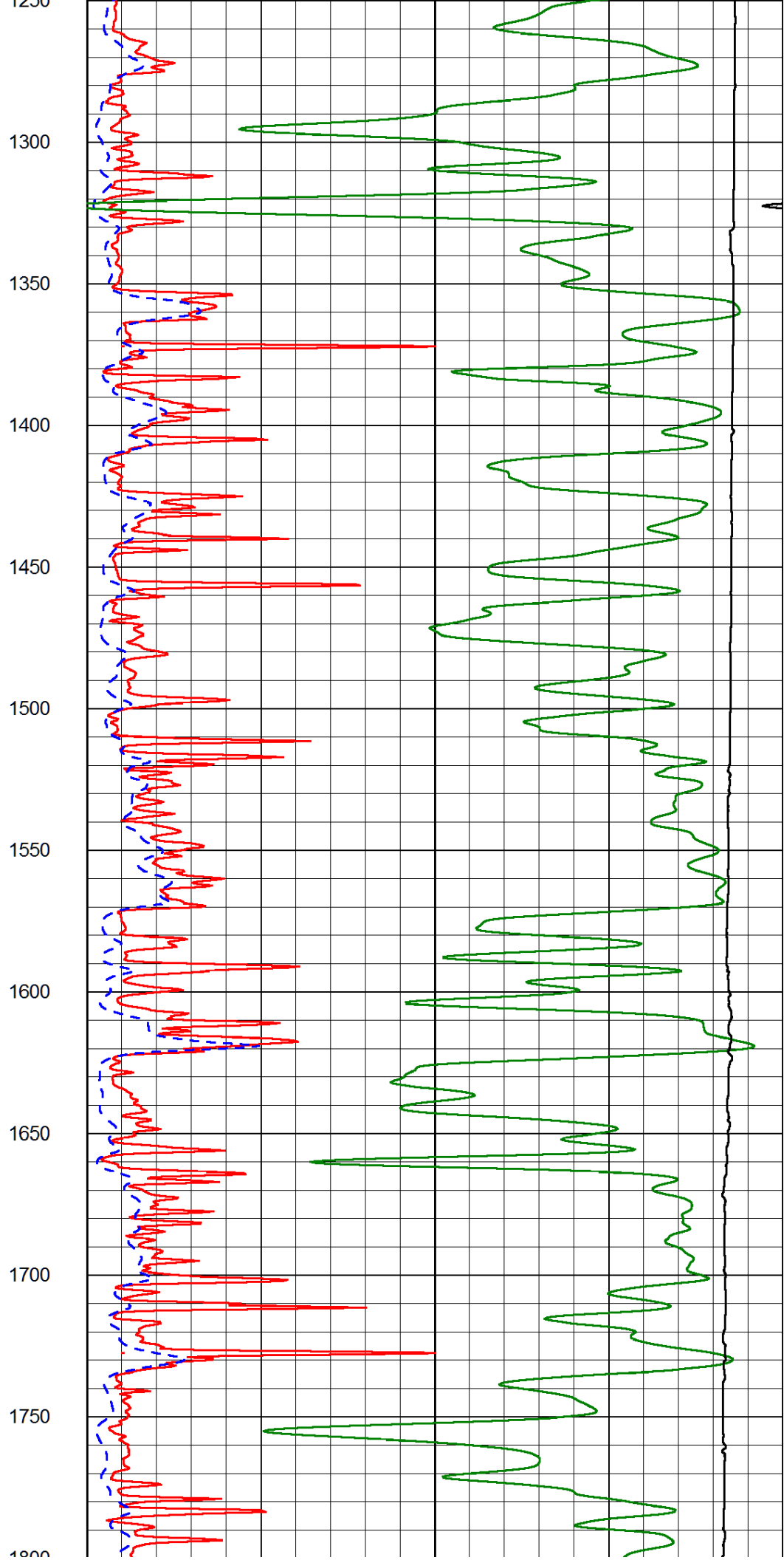
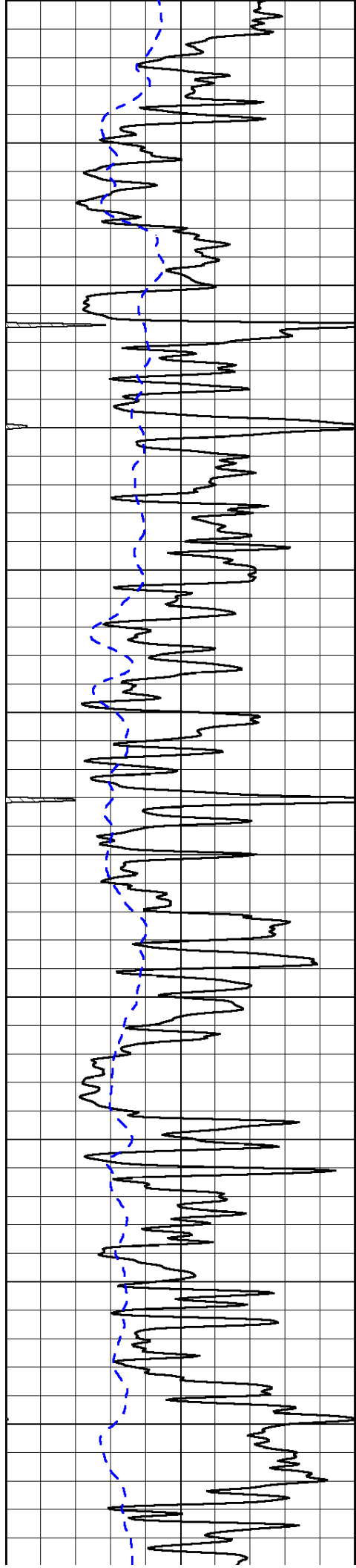
0	Shallow Resistivity (Ohm-m)	50
0	Deep Resistivity (Ohm-m)	50

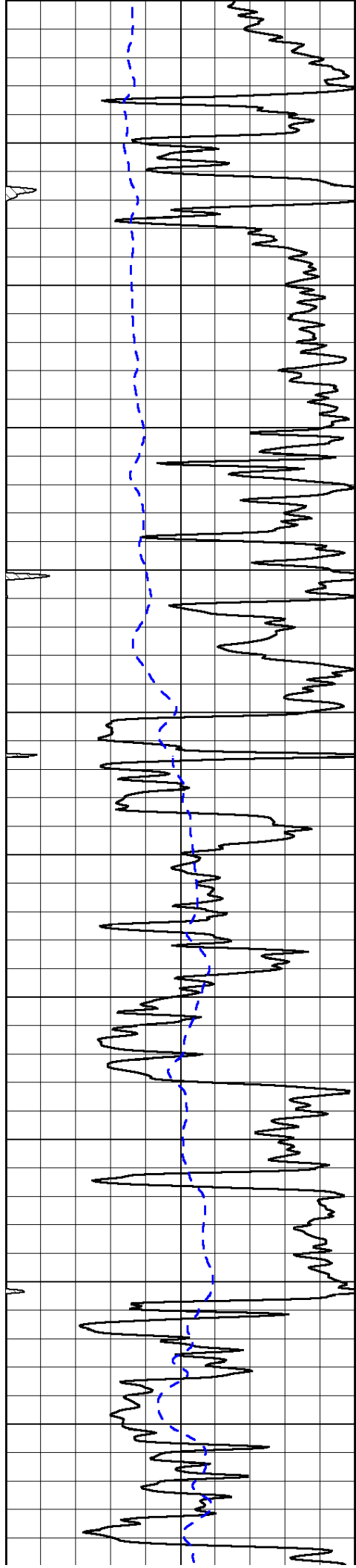
1000	Conductivity (Ohm-m)	0
15000	Line Tension (lb)	0

Shallow Resistivity		
50	(Ohm-m)	500
50	Deep Resistivity (Ohm-m)	500

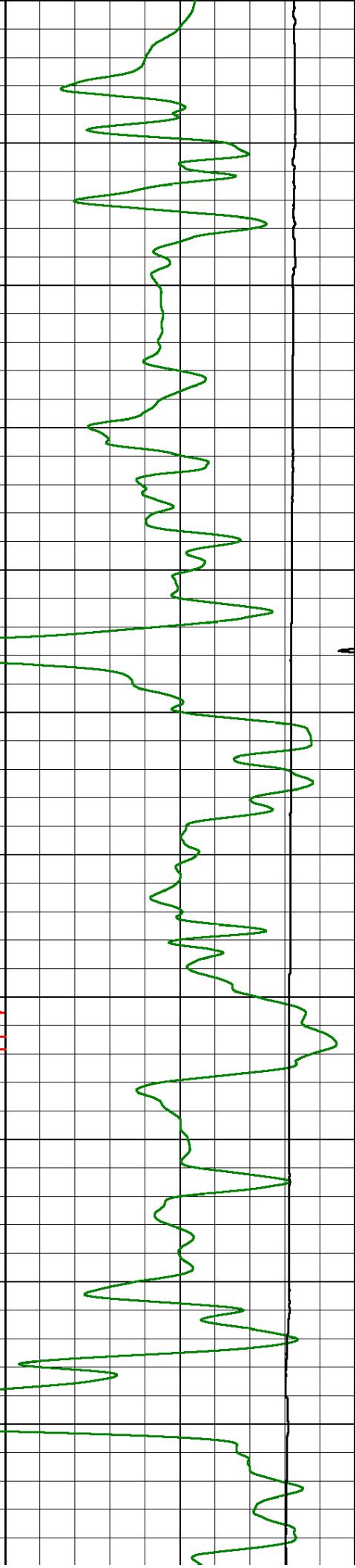
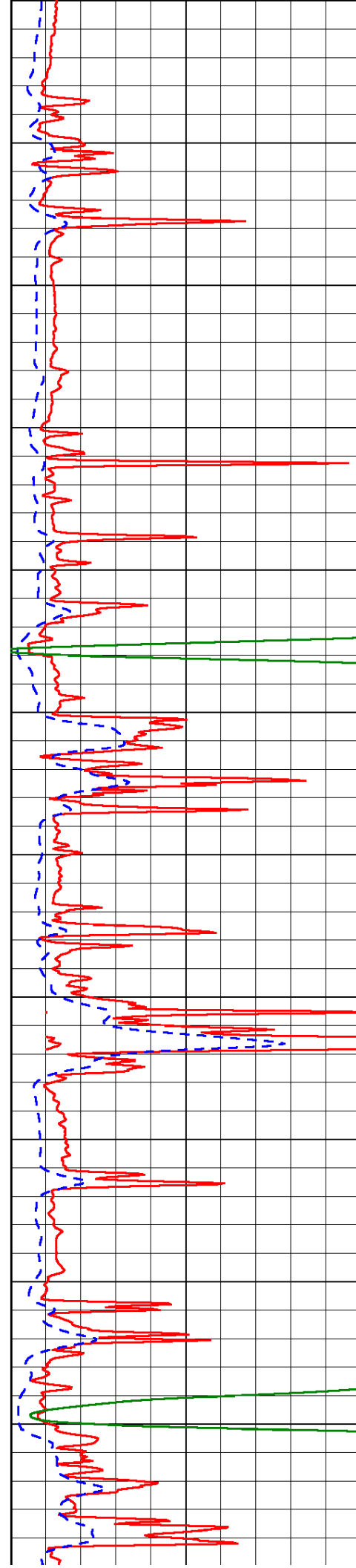


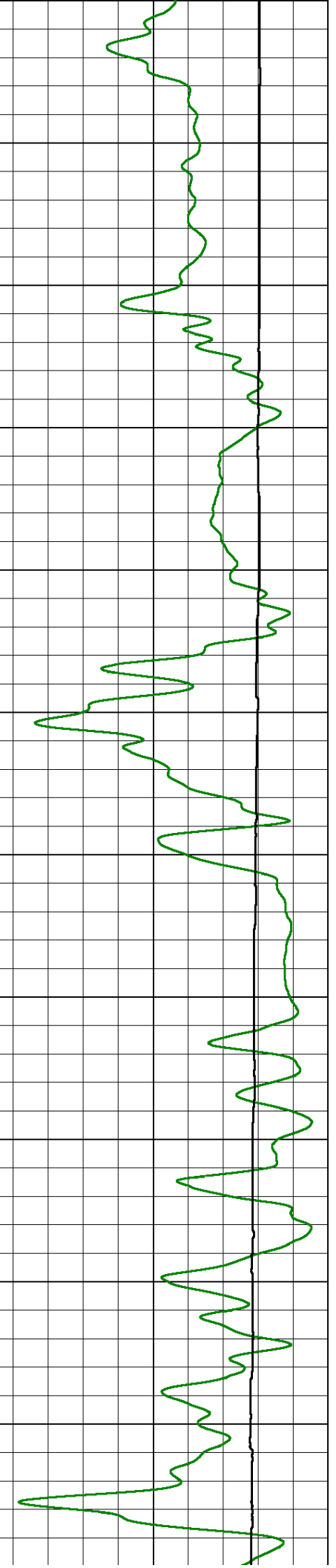
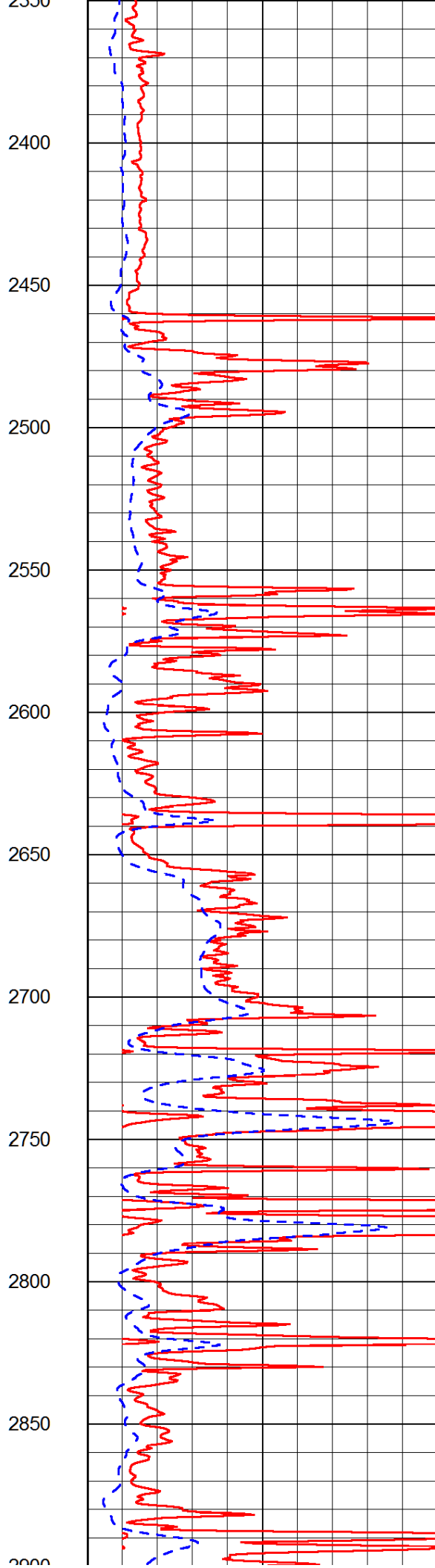
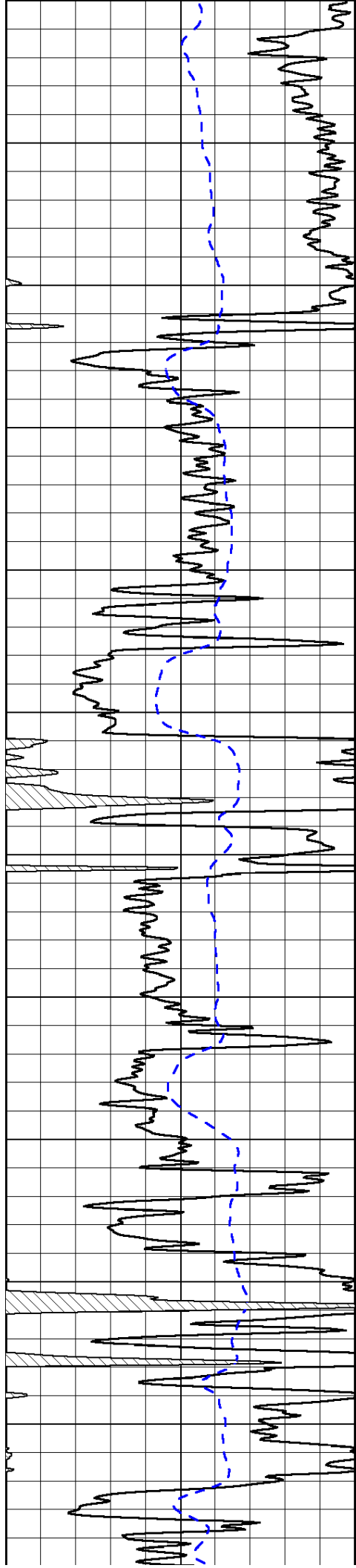


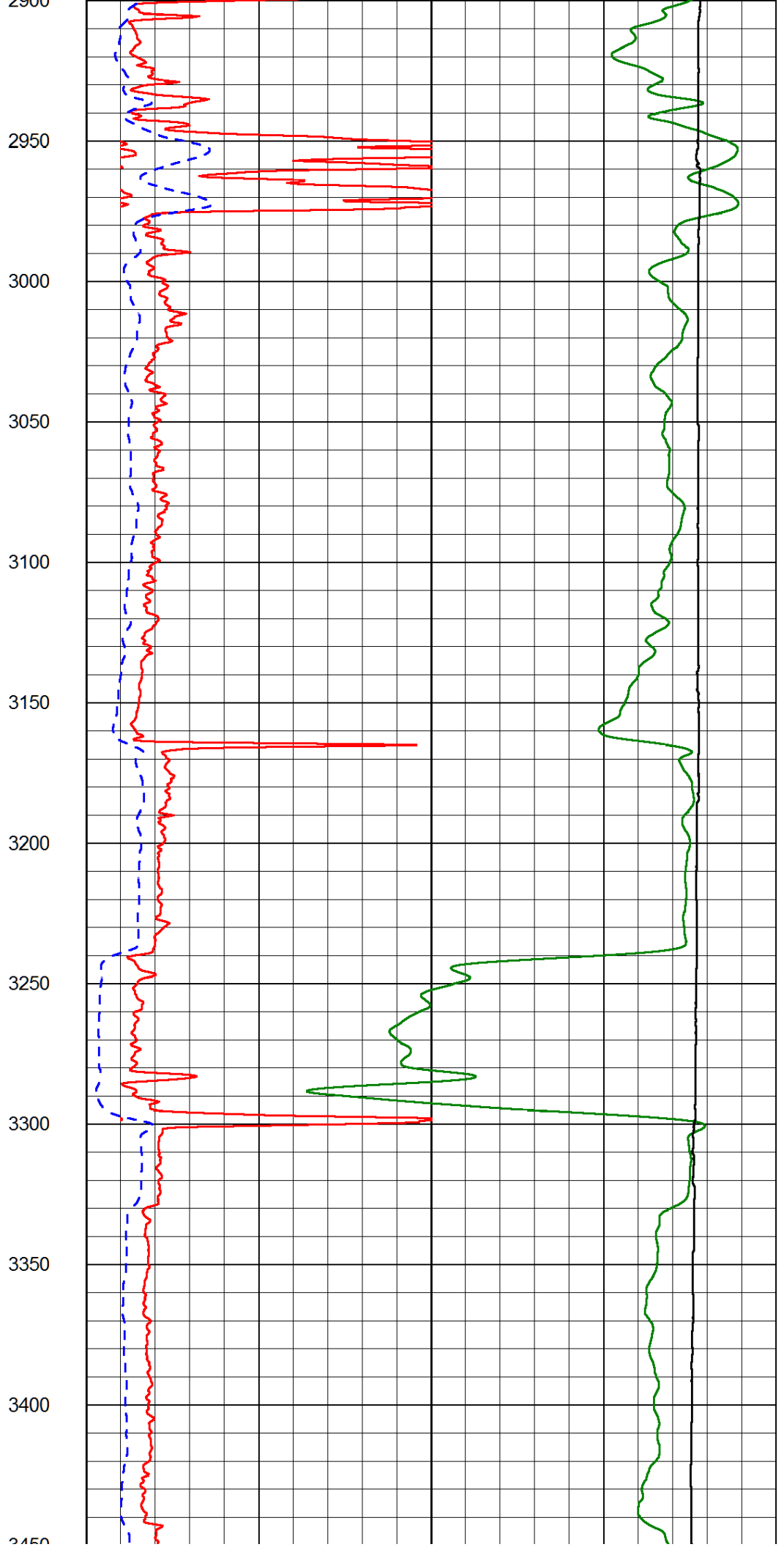
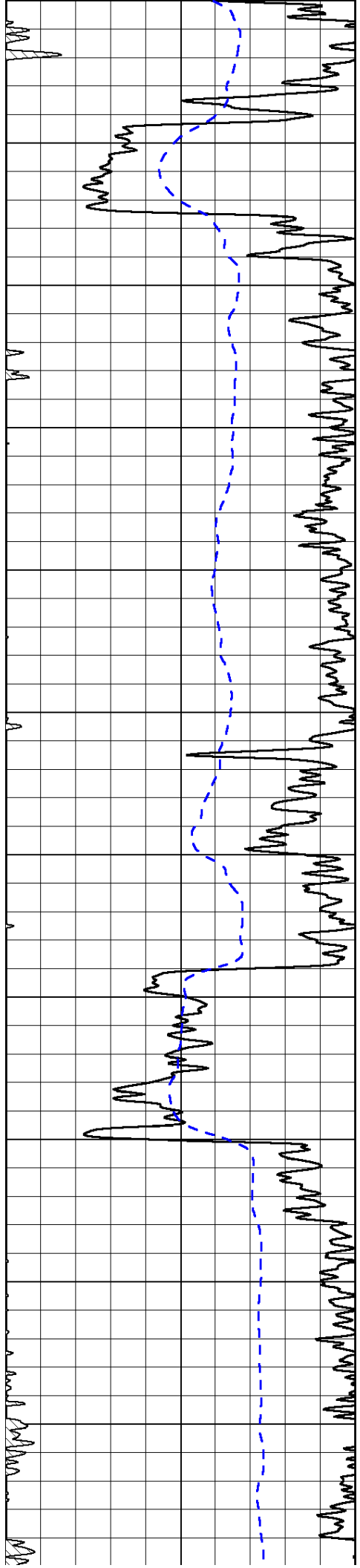


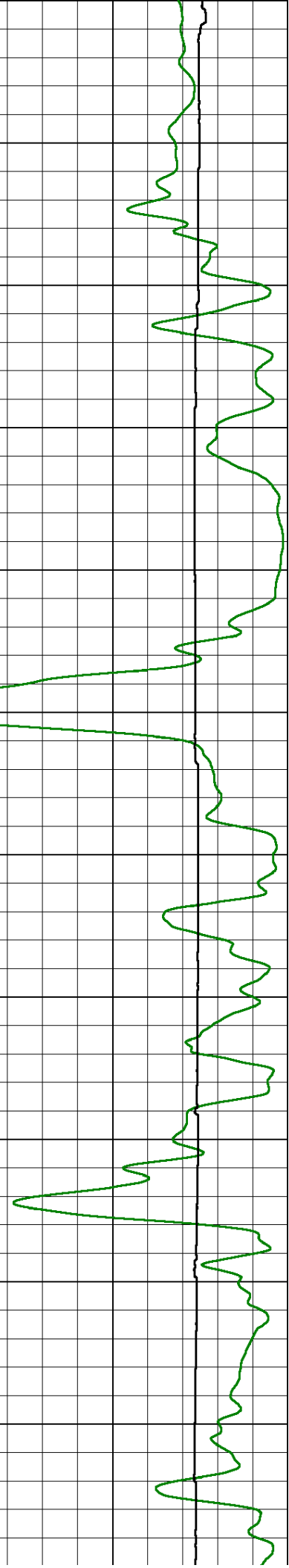
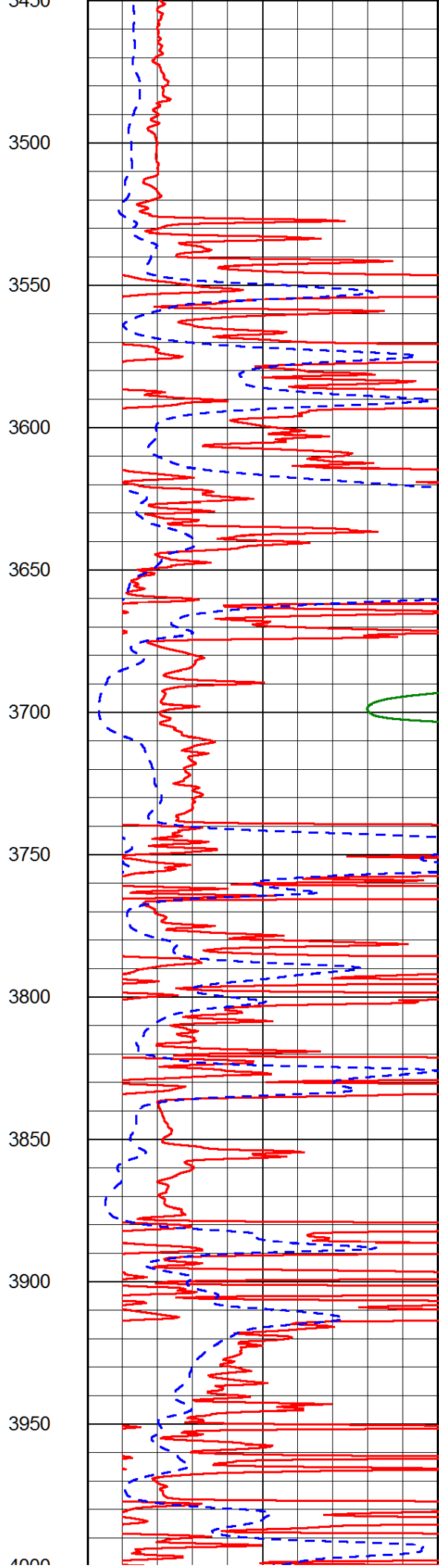
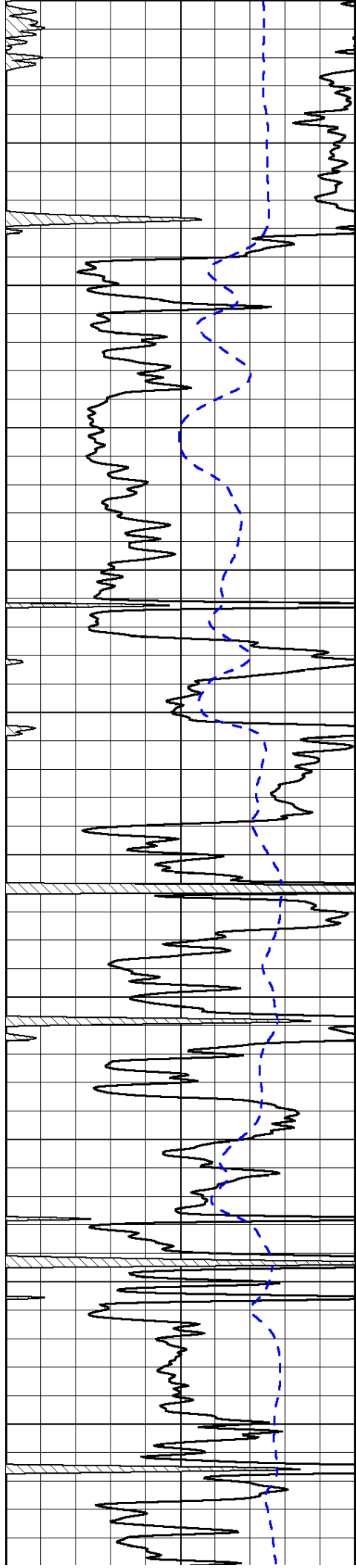


1800  
1850  
1900  
1950  
2000  
2050  
2100  
2150  
2200  
2250  
2300  
2350

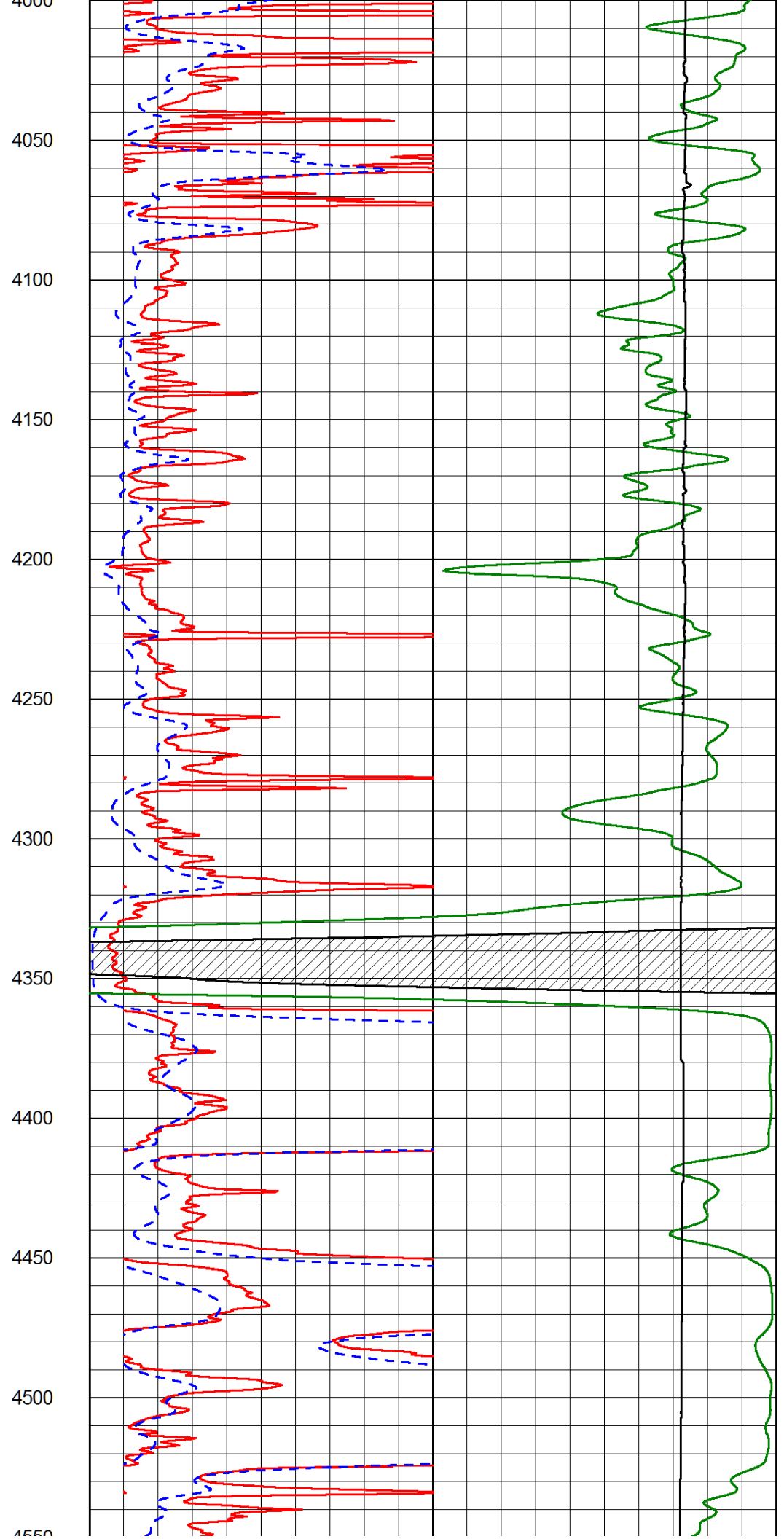
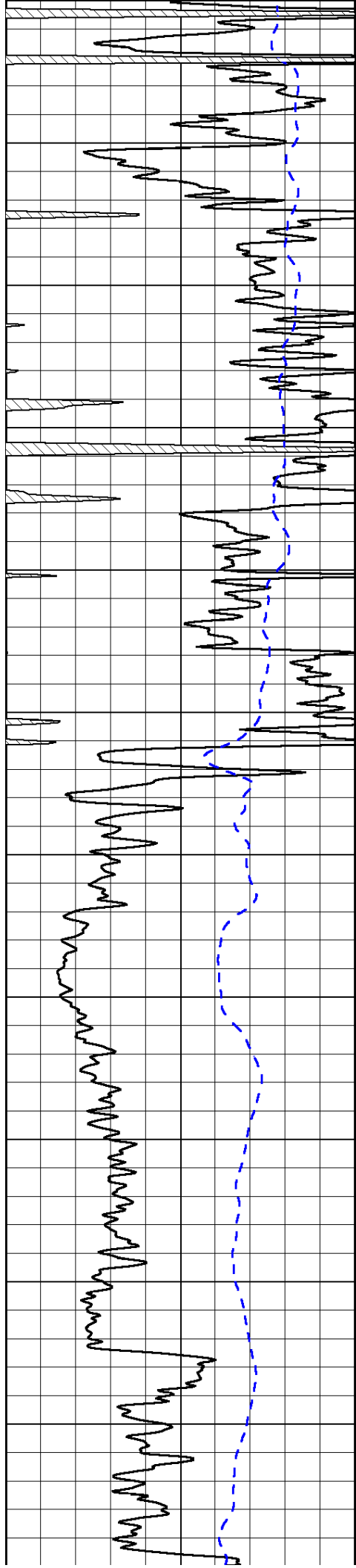


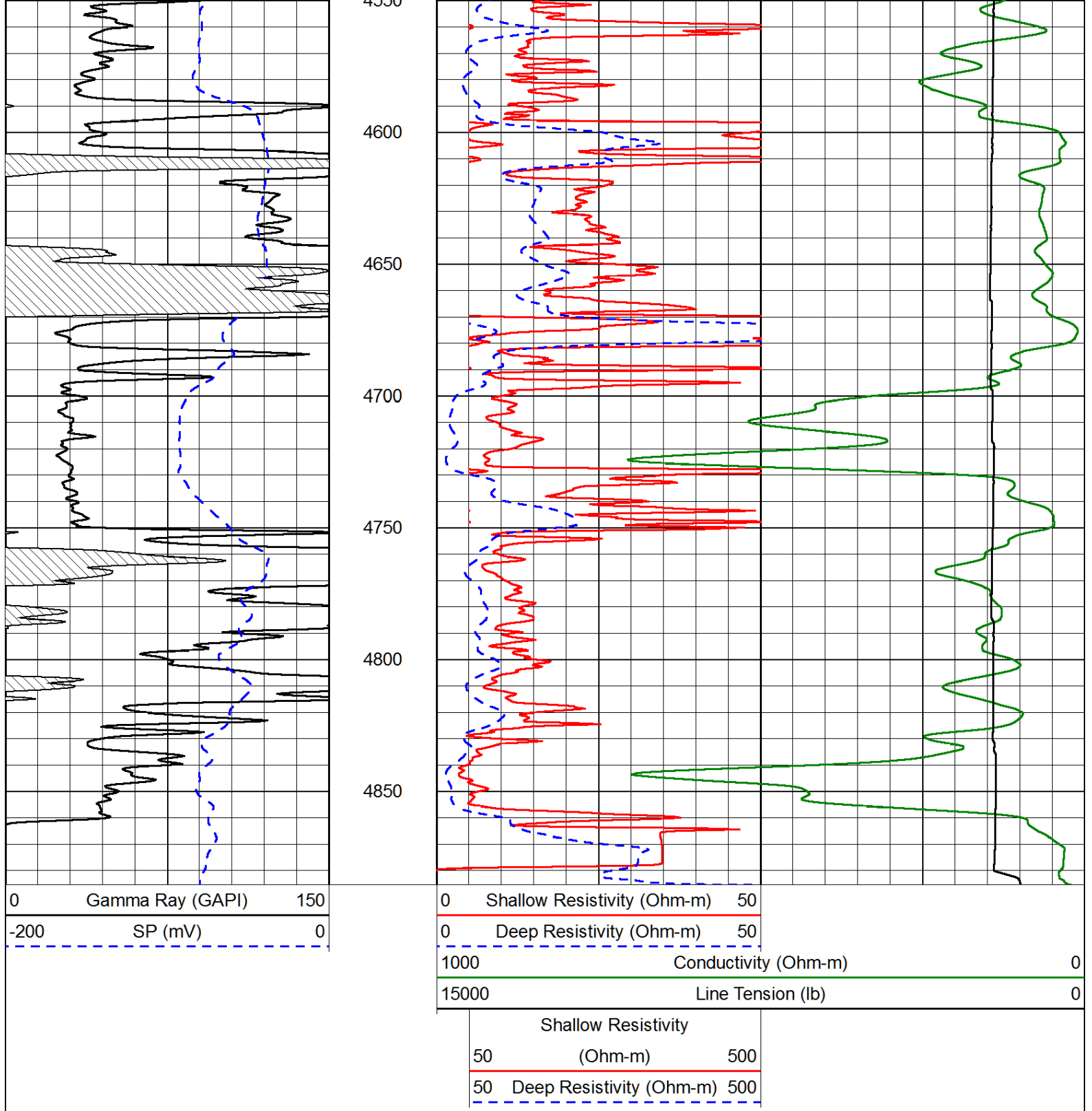




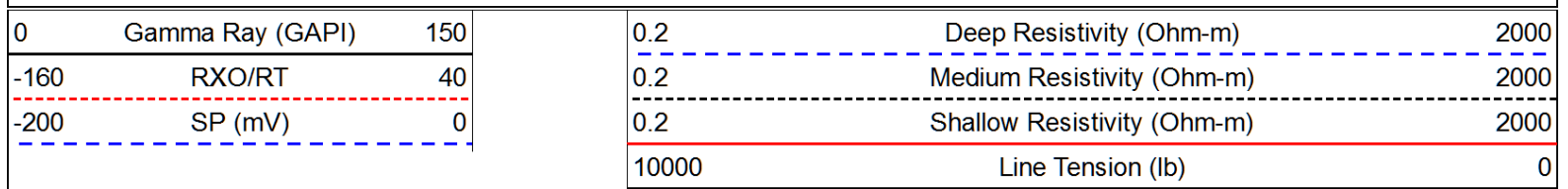




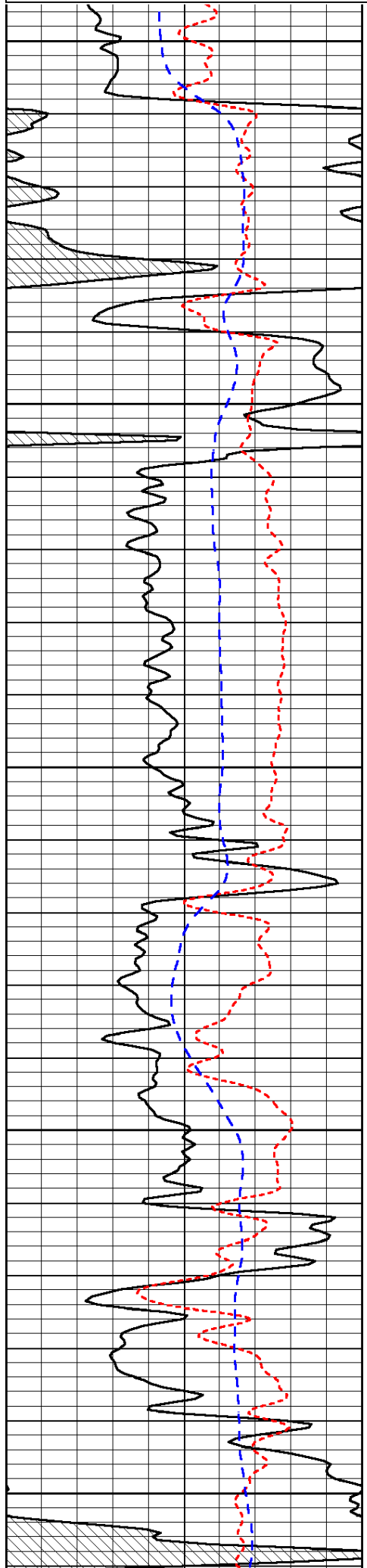




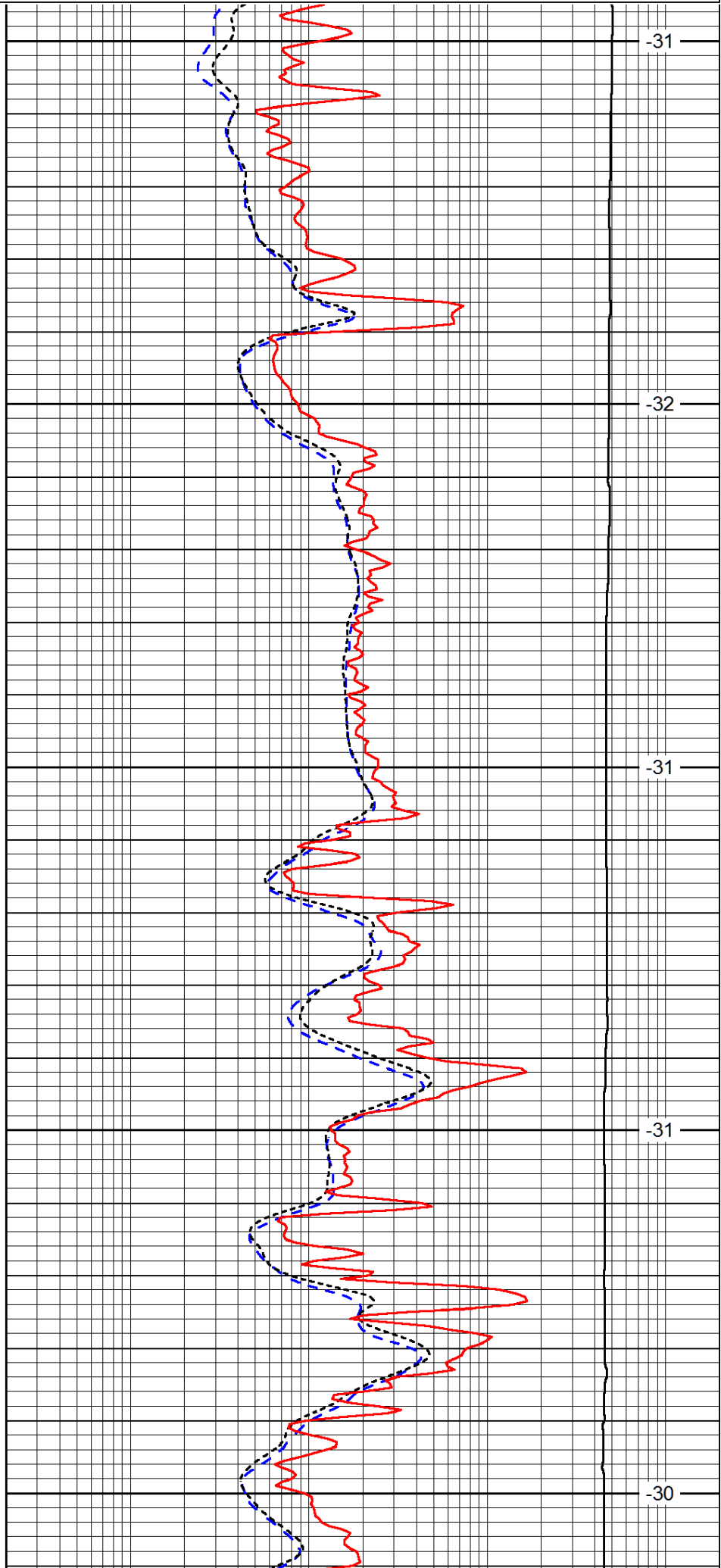
Database File: energyinvest\_turek\_1\_16hd.db  
 Dataset Pathname: DIL/engstk  
 Presentation Format: dil  
 Dataset Creation: Wed May 08 21:42:20 2013  
 Charted by: Depth in Feet scaled 1:240



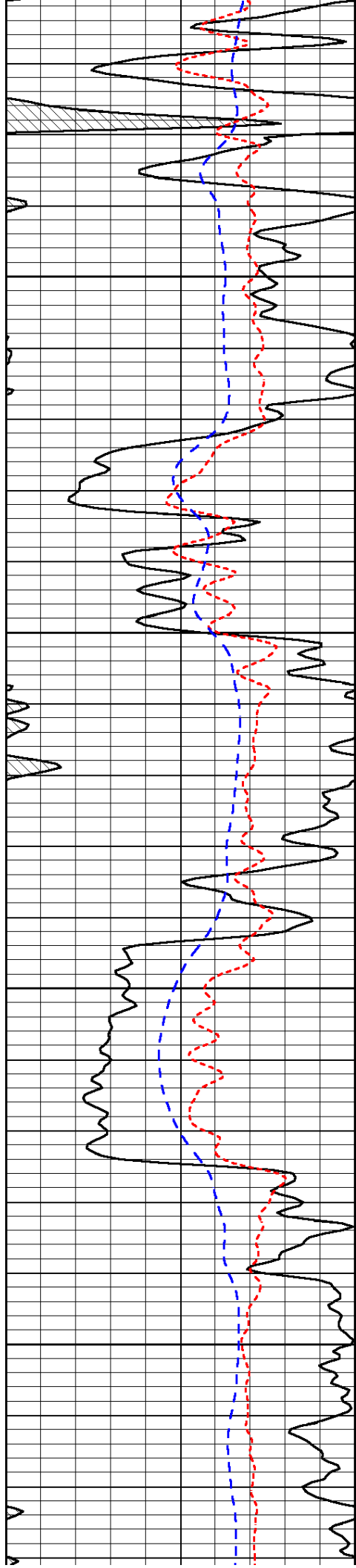
LSPD  
(ft/min)



2600  
2650  
2700  
2750  
2800



-31  
-32  
-31  
-31  
-30

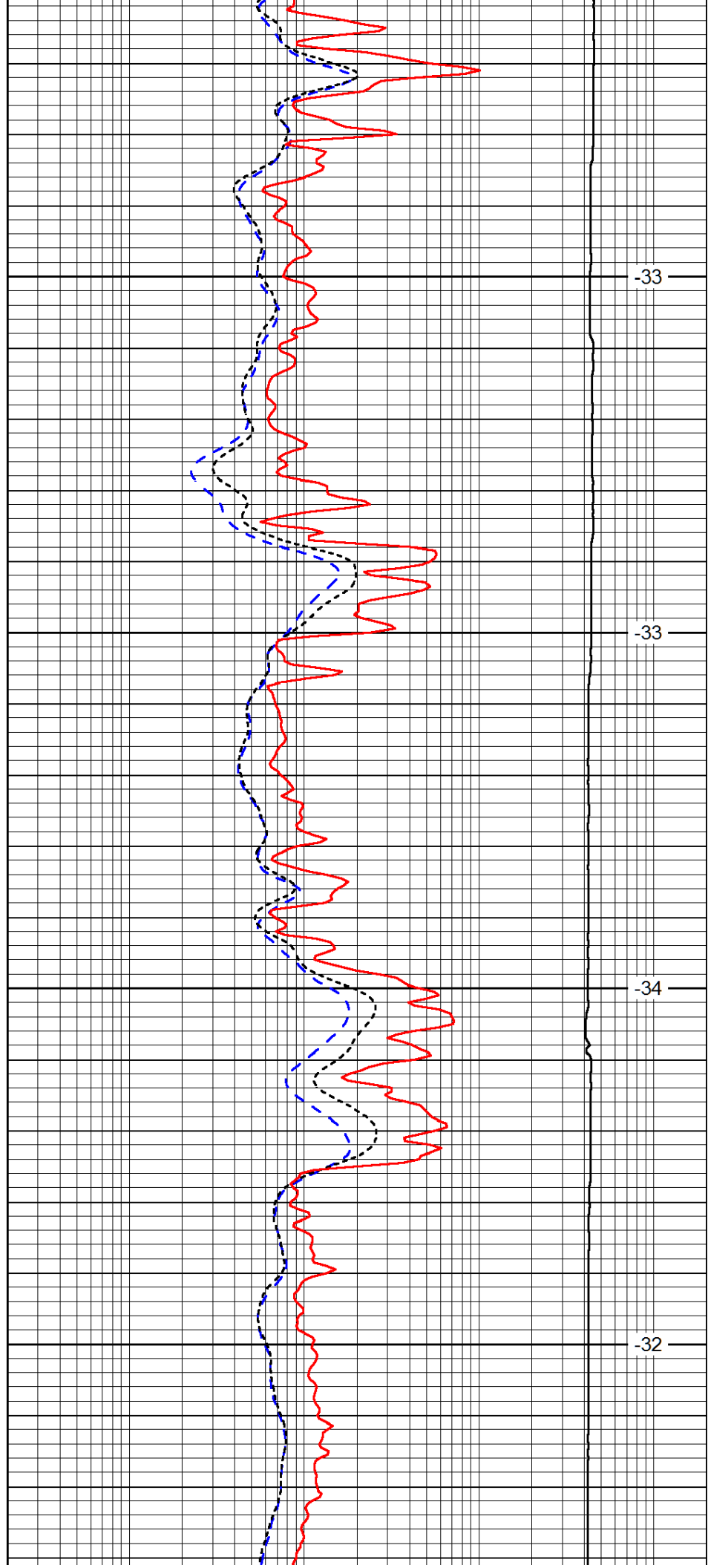


2850

2900

2950

3000

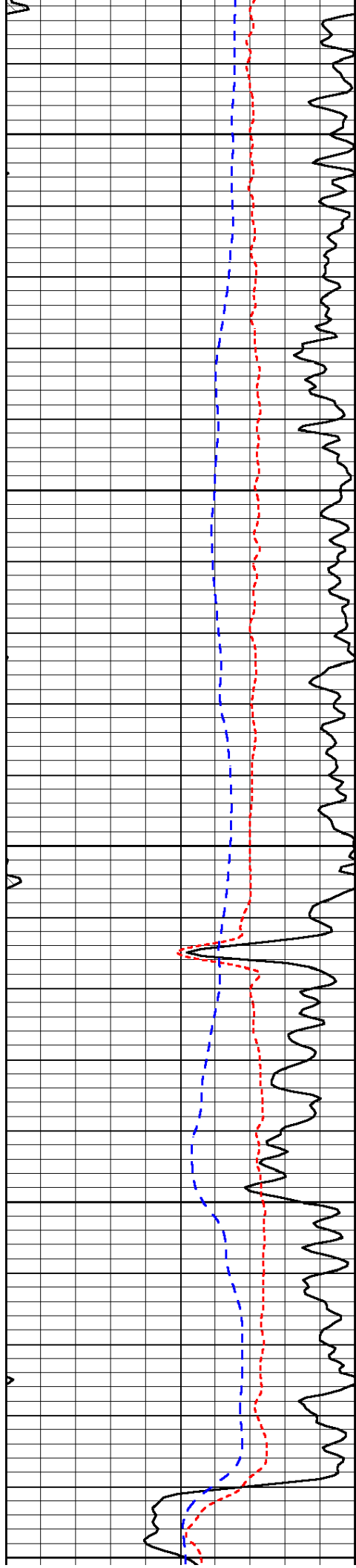


-33

-33

-34

-32



3050

3100

3150

3200

3250

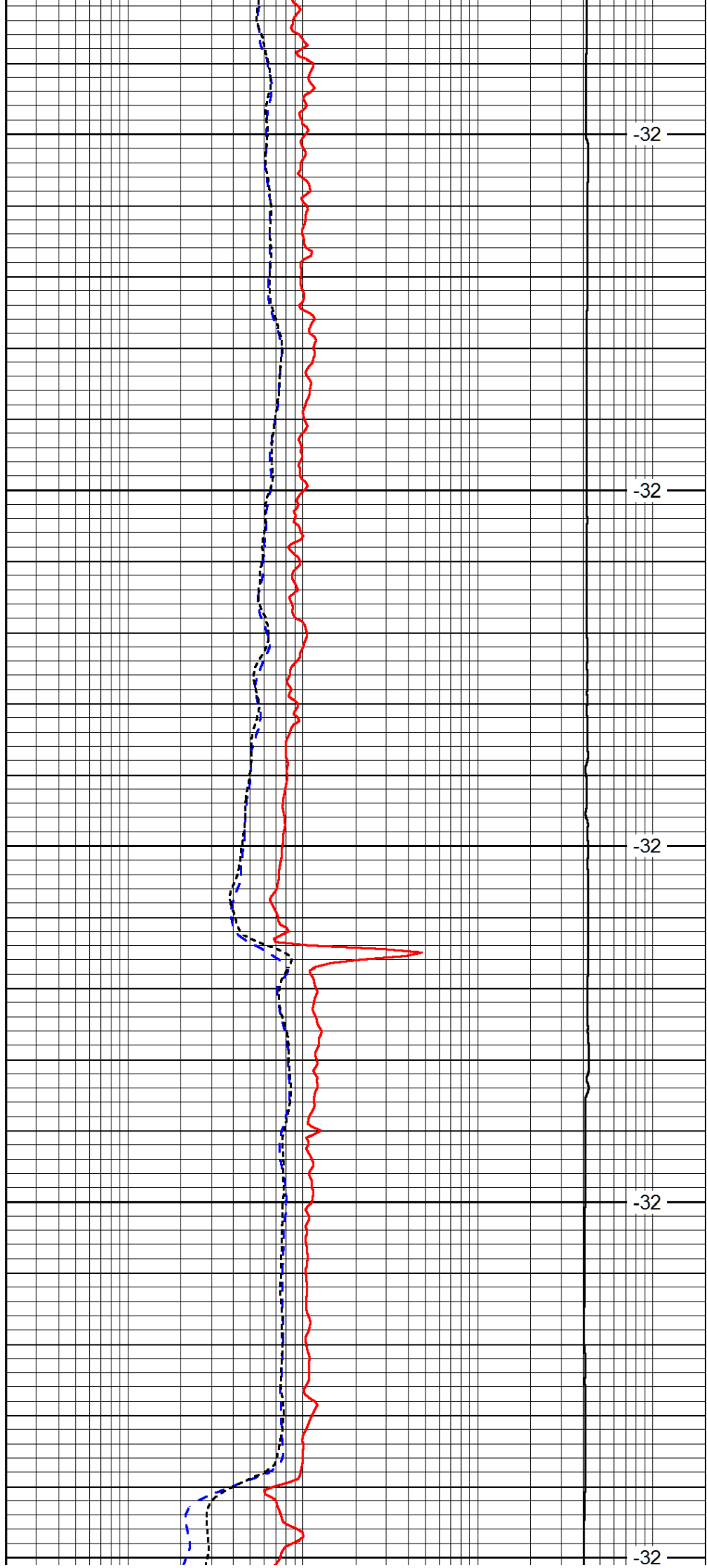
-32

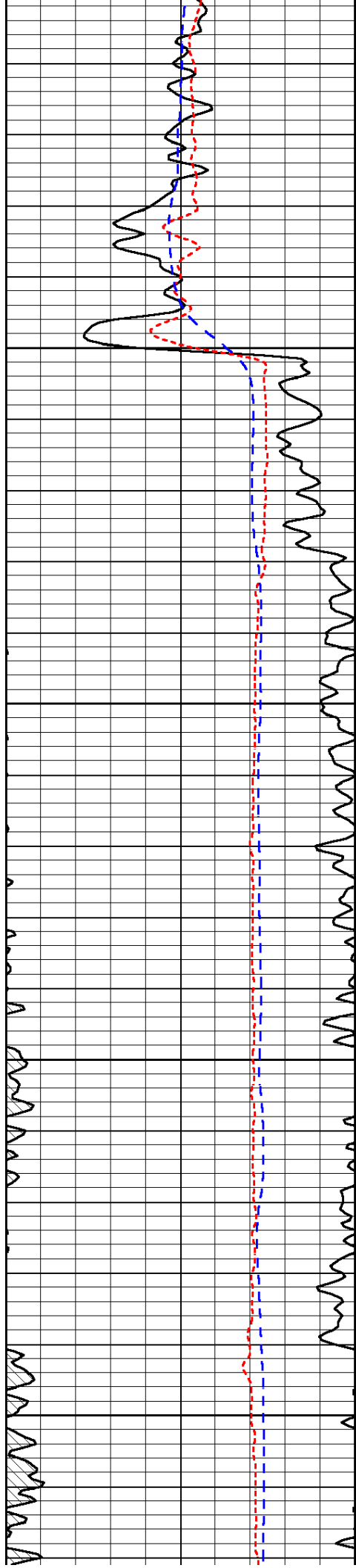
-32

-32

-32

-32



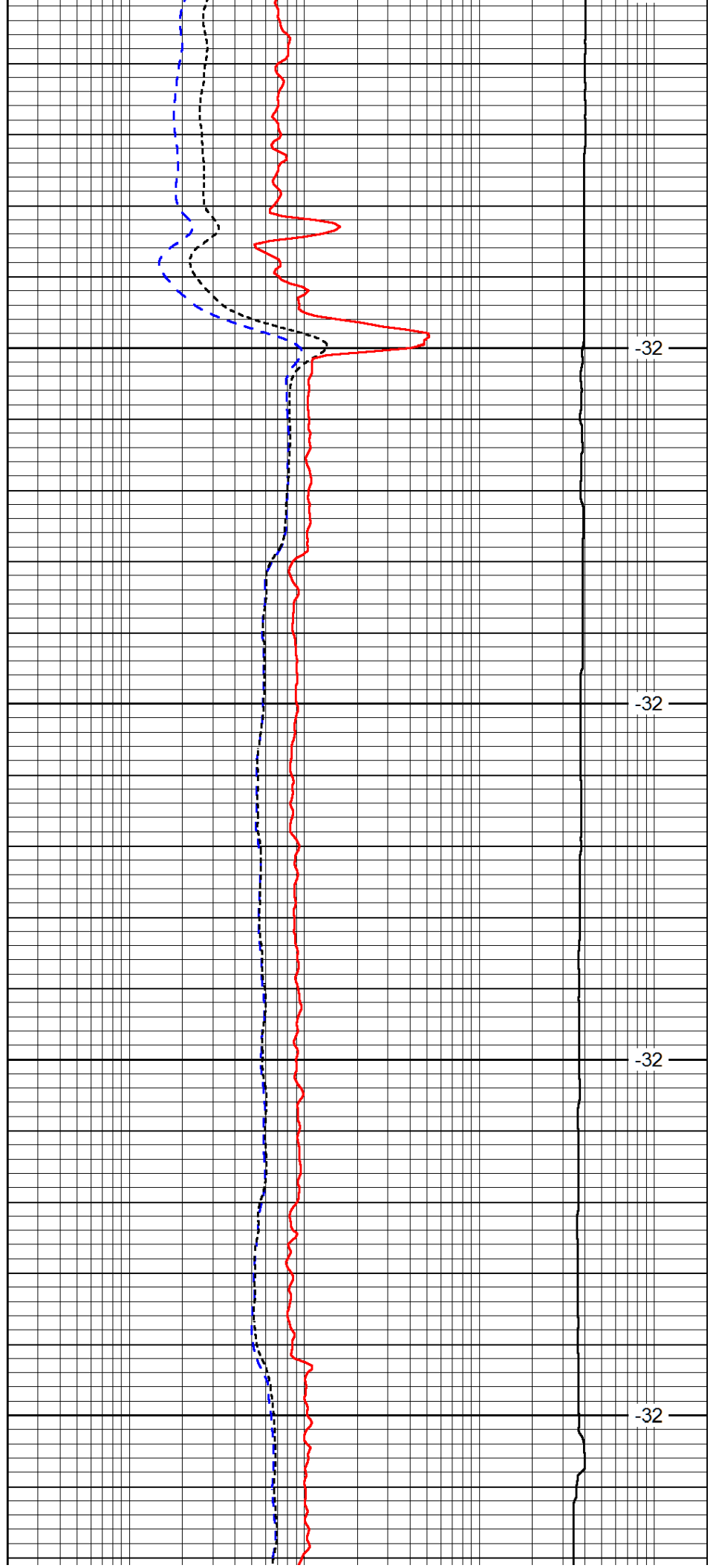


3300

3350

3400

3450

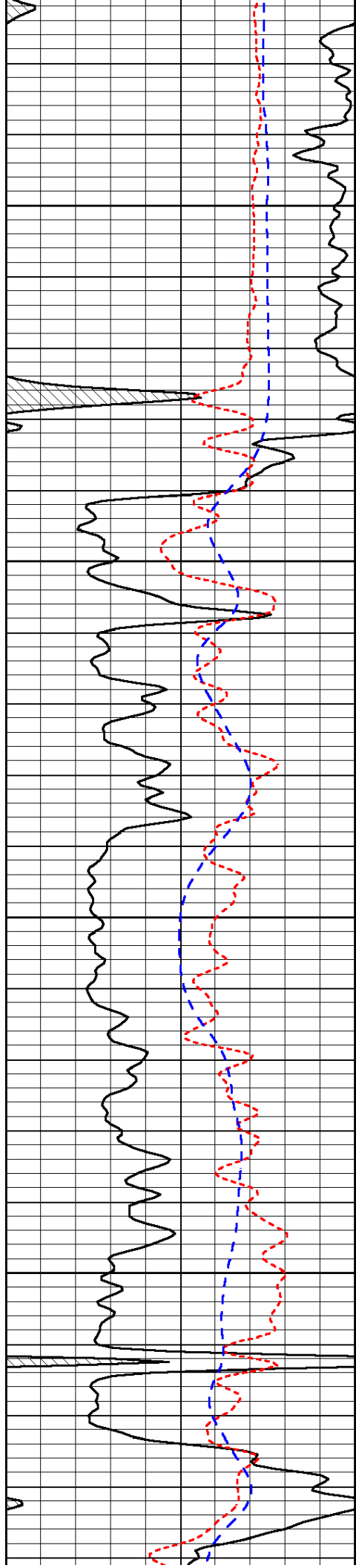


-32

-32

-32

-32

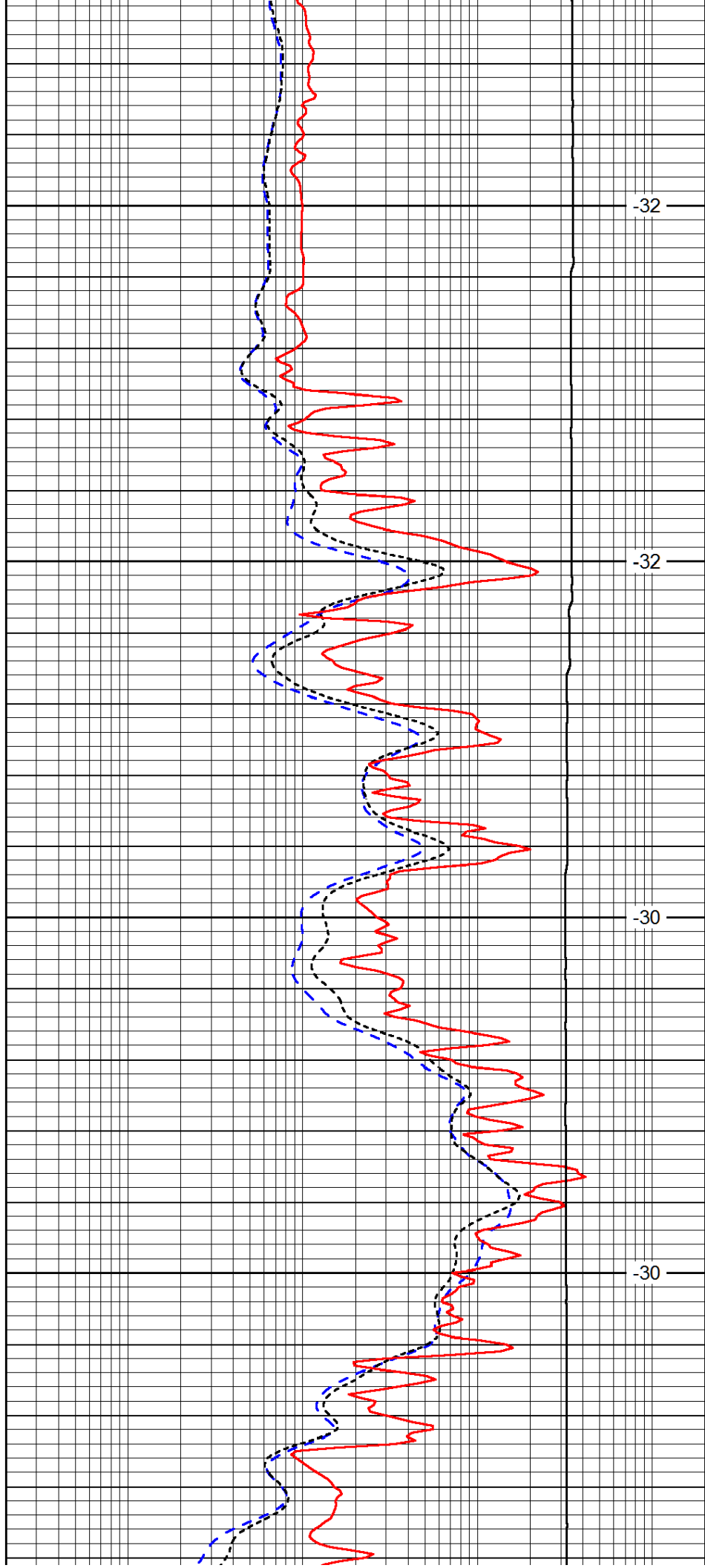


3500

3550

3600

3650

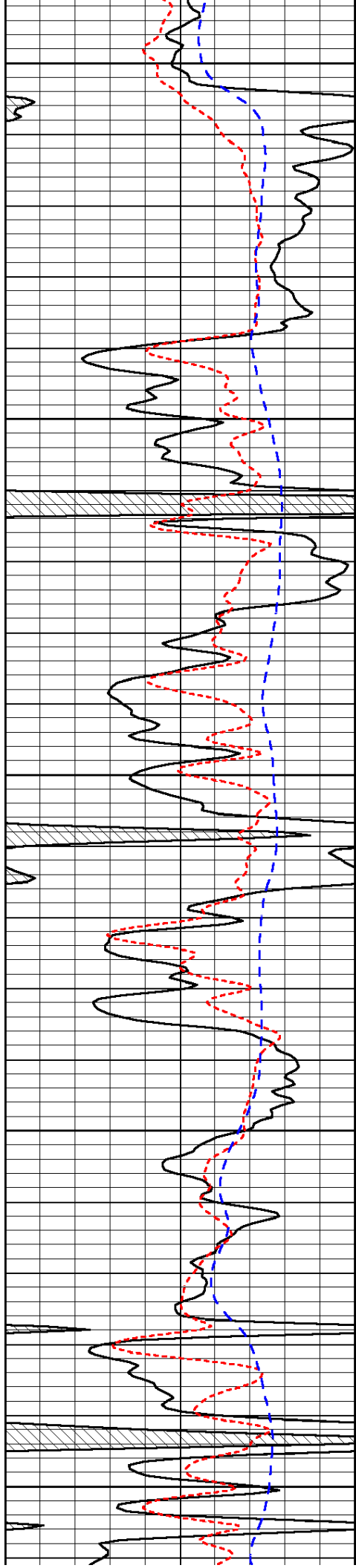


-32

-32

-30

-30



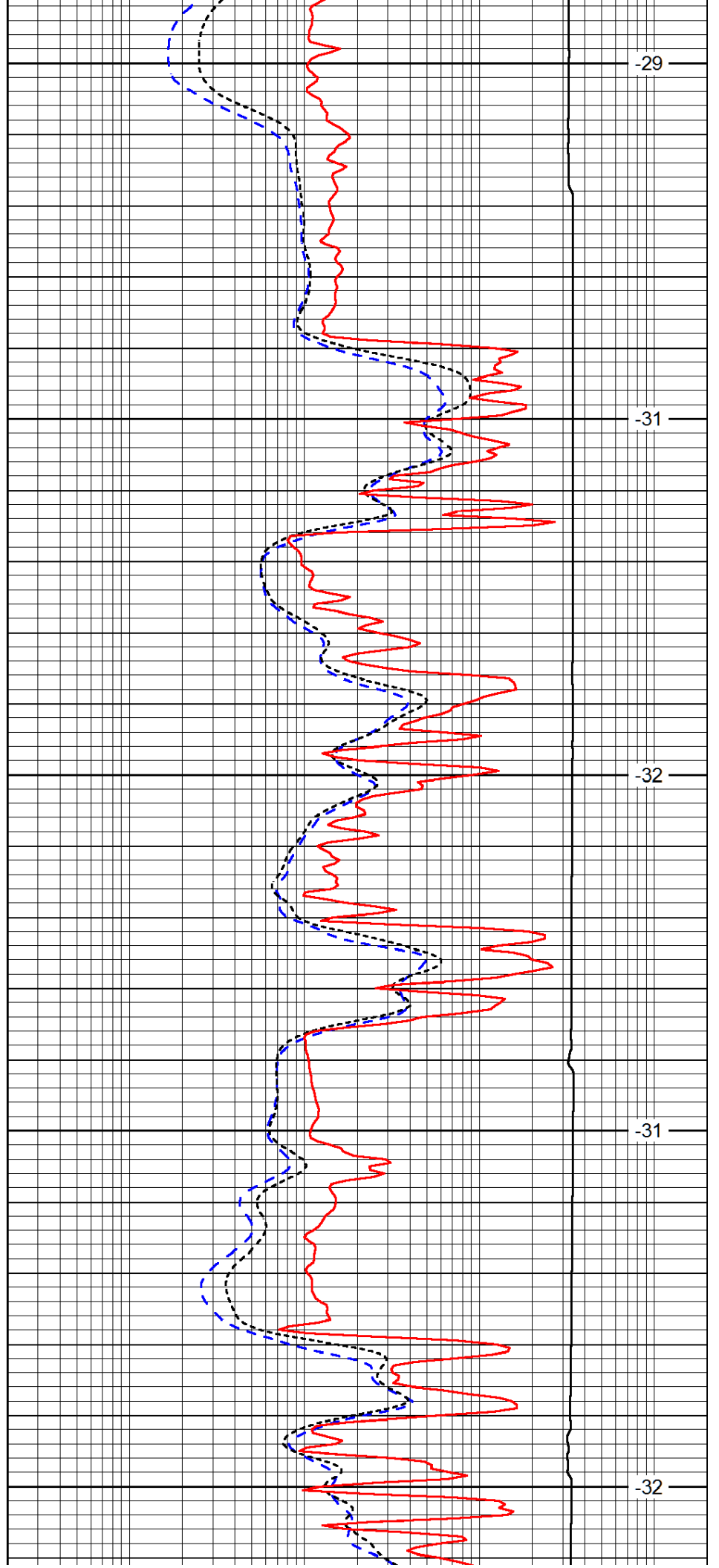
3700

3750

3800

3850

3900



-29

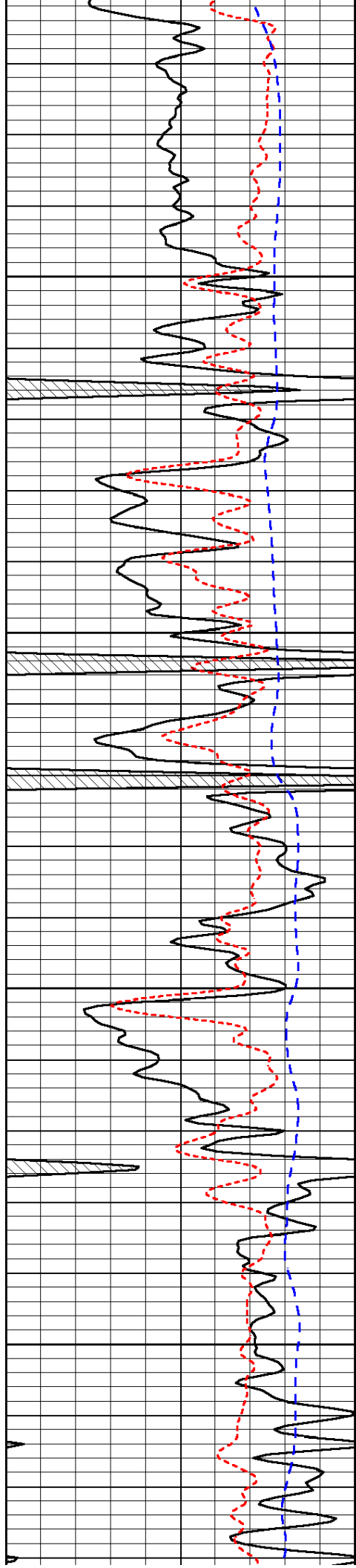
-31

-32

-31

-32



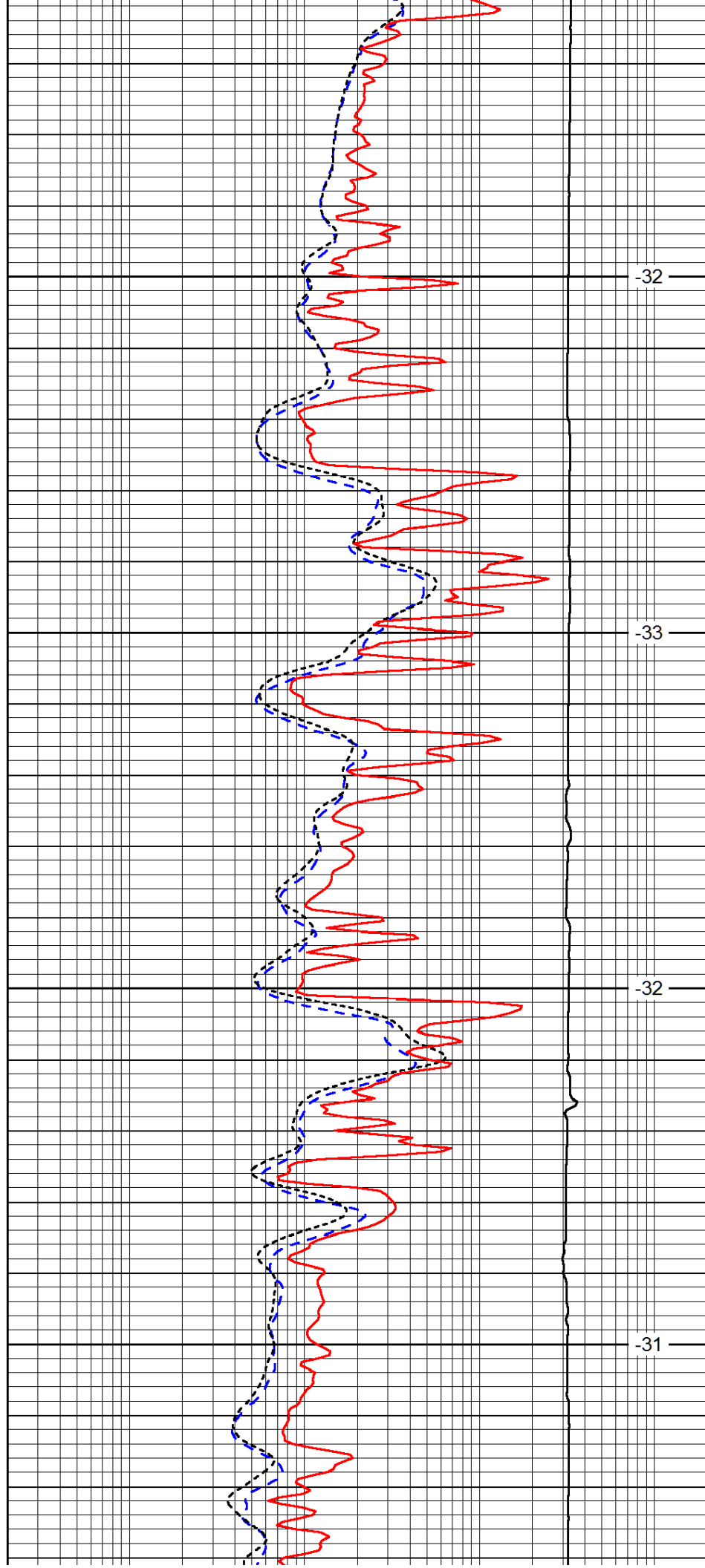


3950

4000

4050

4100

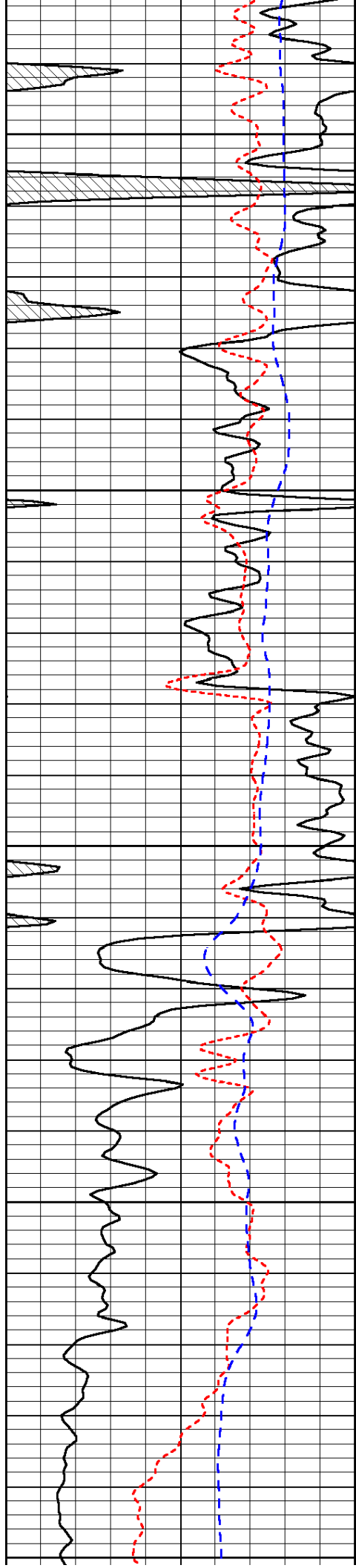


-32

-33

-32

-31



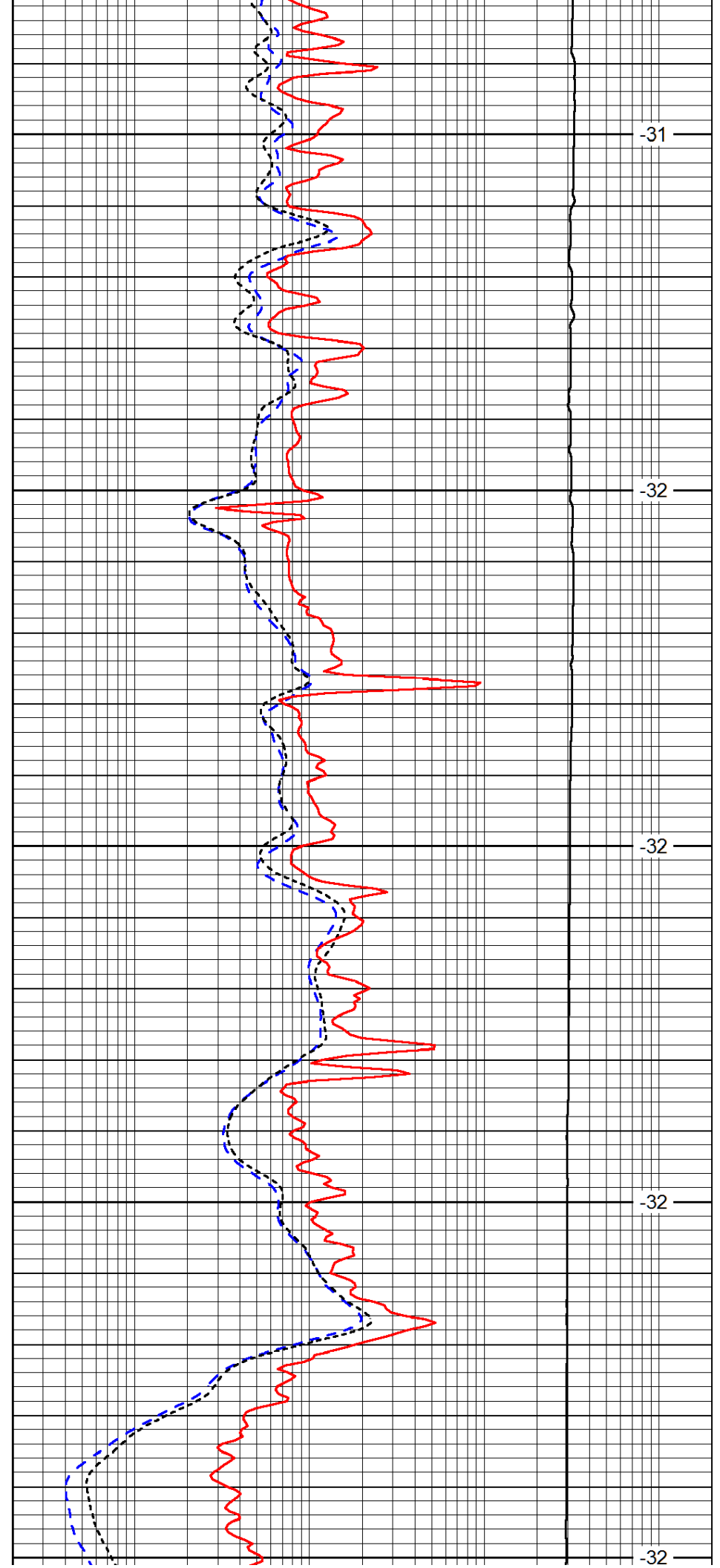
4150

4200

4250

4300

4350



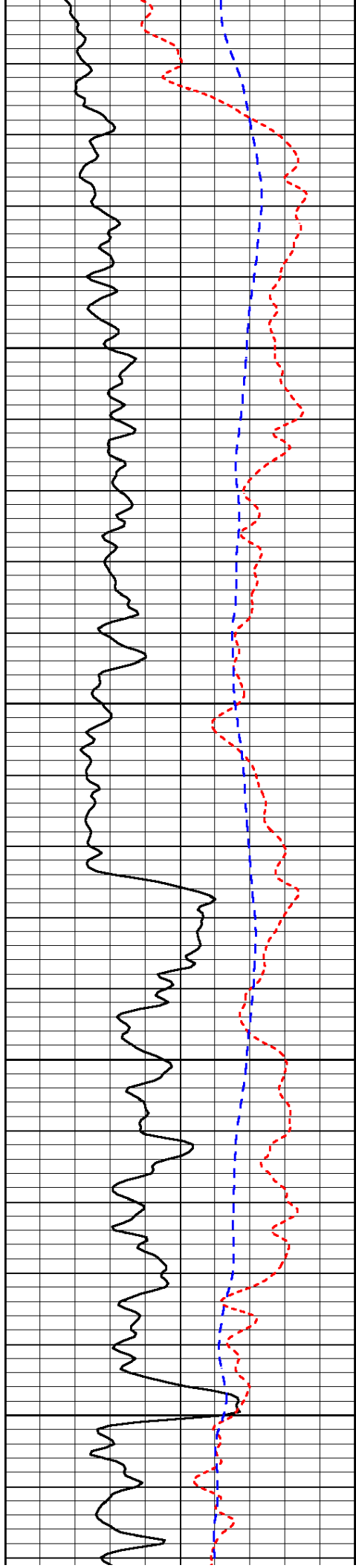
-31

-32

-32

-32

-32

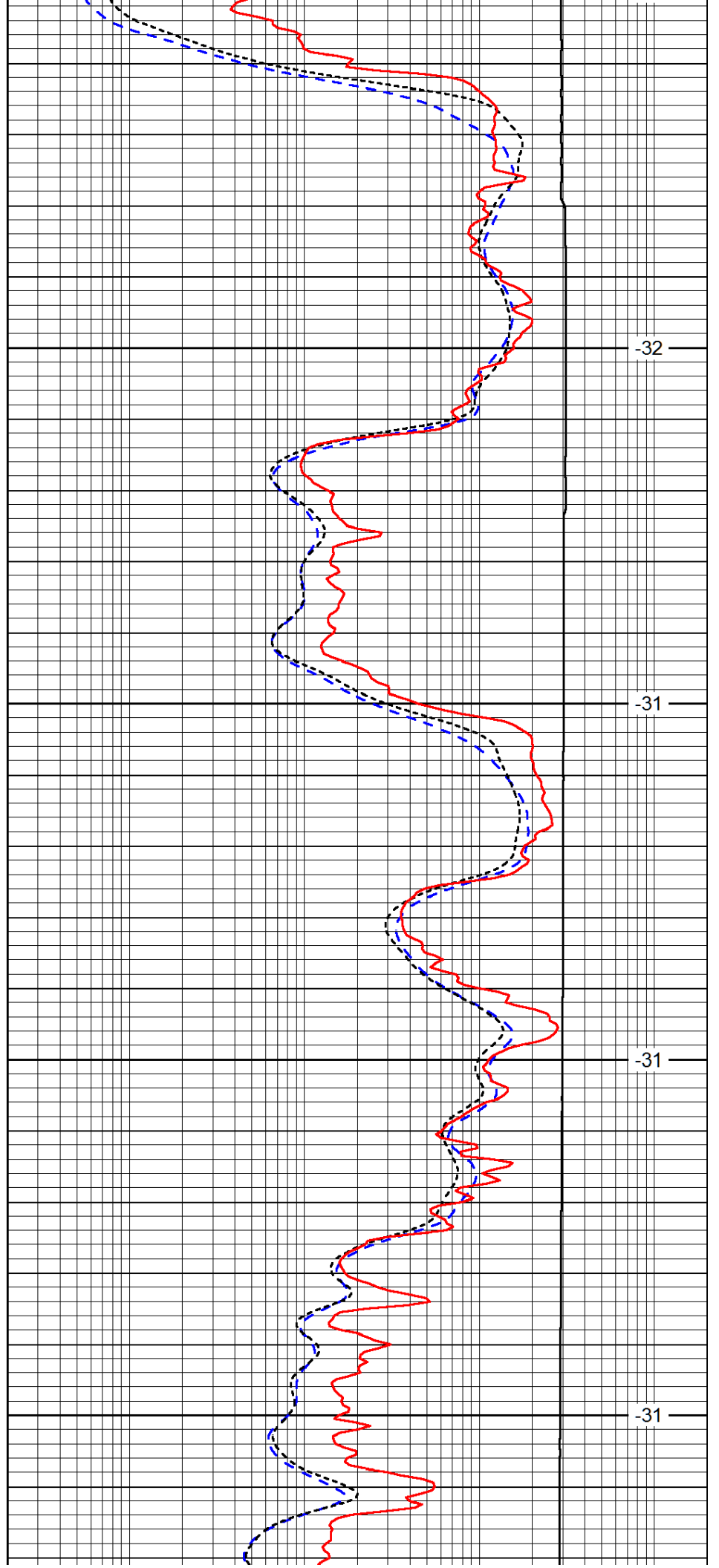


4400

4450

4500

4550

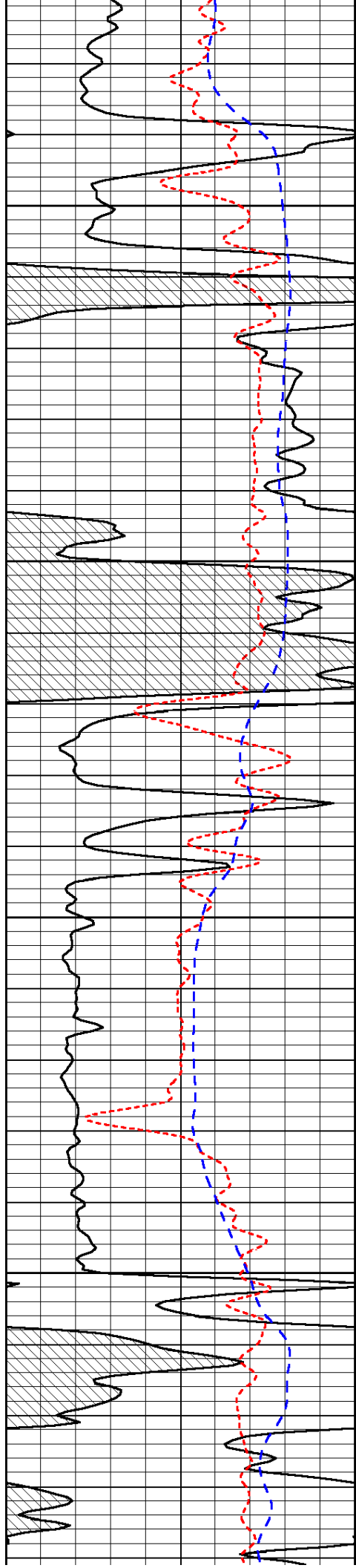


-32

-31

-31

-31



4600

4650

4700

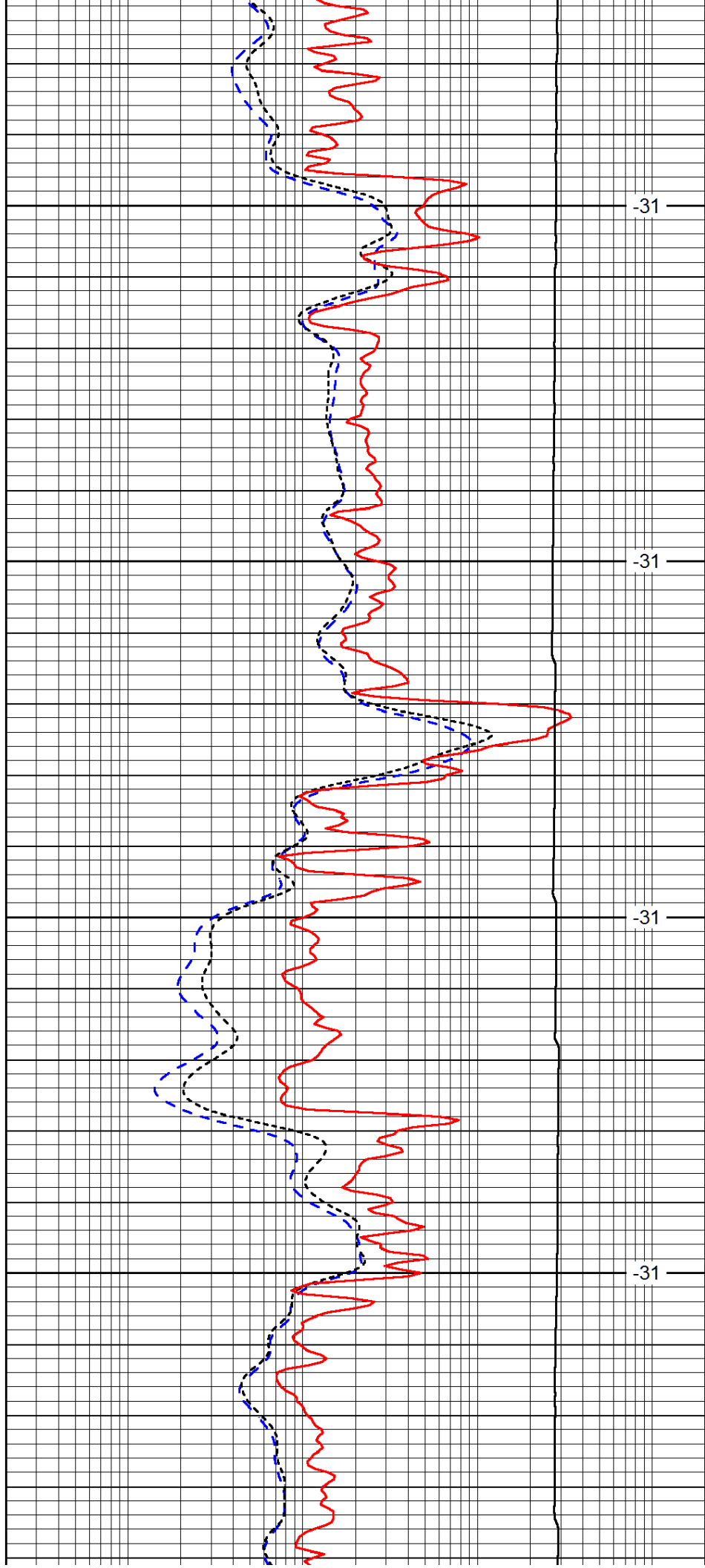
4750

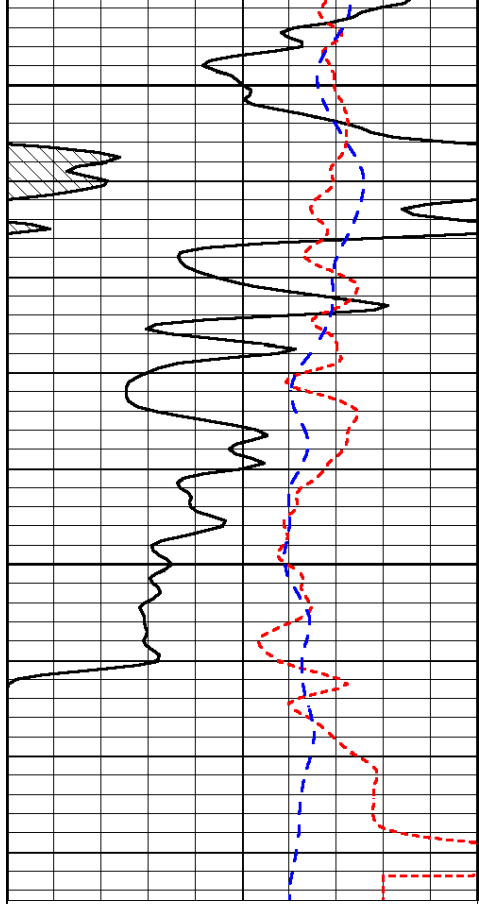
-31

-31

-31

-31



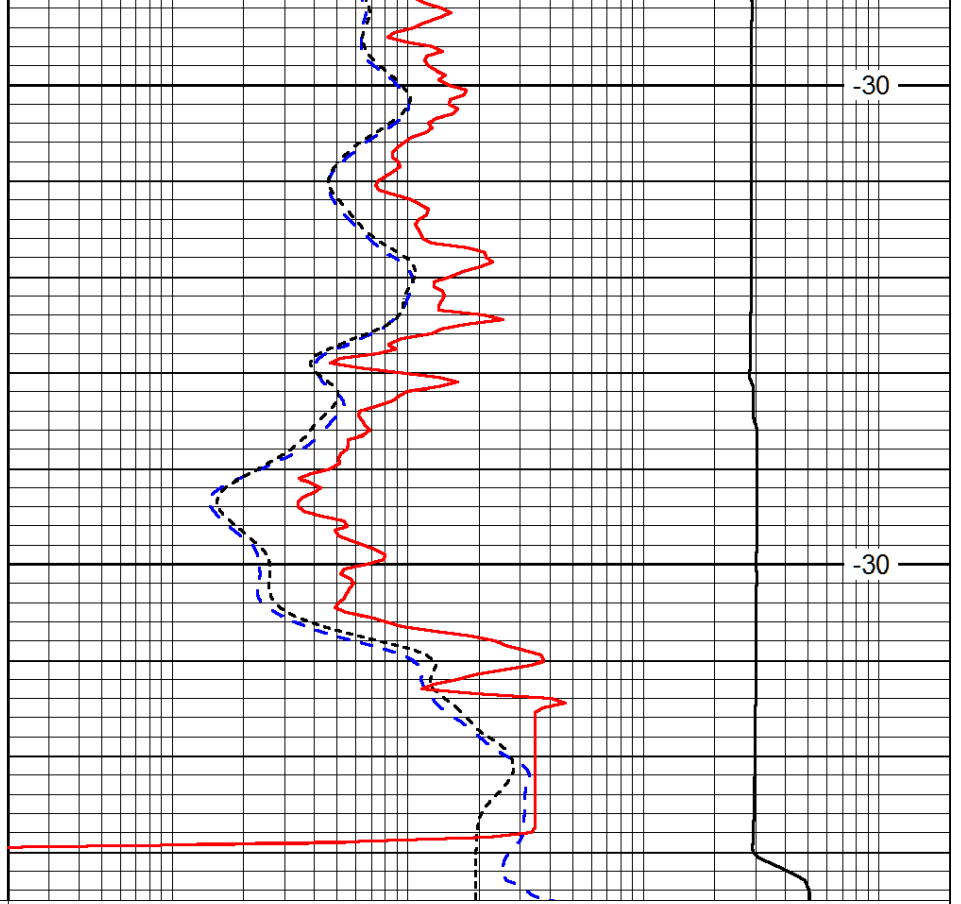


4800

-30

4850

-30



0	Gamma Ray (GAPI)	150
-160	RXO/RT	40
-200	SP (mV)	0

0.2	Deep Resistivity (Ohm-m)	2000
0.2	Medium Resistivity (Ohm-m)	2000
0.2	Shallow Resistivity (Ohm-m)	2000
10000	Line Tension (lb)	0

LSPD  
(ft/min)