



Pioneer Energy Services

Borehole Compensated Sonic Log

| | | | |
|----------------|-------------------------------------|--|--|
| API No. | 15-191-22,683-00-00 | | |
| Company | Energy Investment Partners, LLC | | |
| Well | Turek #1-16 | | |
| Field | Wildcat | | |
| County | Sumner | | |
| Location | NW/NE SW/NW 1590' FNL & 840' FWL | | |
| State | Kansas | | |
| Other Services | CNL/CDL MEL/DIL | | |

| | | | |
|------------------------|---------------|--------------------------|------|
| Permanent Datum | Ground Level | Elevation | 1212 |
| Log Measured From | Kelly Bushing | 10 Ft. Above Perm. Datum | |
| Drilling Measured From | Kelly Bushing | | |
| Date | 5/8/2013 | Elevation | 1222 |
| Run Number | Two | D.F. | 1212 |
| Type Log | BHC Sonic | G.L. | |

| | |
|------------------------|---------------|
| Depth Driller | 4880 |
| Depth Logger | 4880 |
| Bottom Logged Interval | 4869 |
| Top Logged Interval | 250 |
| Type Fluid In Hole | Chemical |
| Salinity, PPM CL | 6800 |
| Density | 9.2 |
| Level | Full |
| Max. Rec. Temp. F | 125 |
| Operating Rig Time | 6 Hours |
| Equipment -- Location | 15 Days |
| Recorded By | D Kerr |
| Witnessed By | Denny Allison |

| Borehole Record | | | | Casing Record | | | |
|-----------------|-------|------|-----|---------------|------|------|-----|
| Run No. | Bit | From | To | Size | Wgt. | From | To |
| One | 12.25 | 00 | 275 | 8.625 | 23# | 00 | 275 |
| Two | 7.875 | 275 | TD | | | | |
| | | | | | | | |
| | | | | | | | |
| | | | | | | | |

<<< Fold Here >>>

All interpretations are opinions based on inferences from electrical or other measurements and we cannot and do not guarantee the accuracy or correctness of any interpretation, and we shall not, except in the case of gross or willful negligence on our part, be liable or responsible for any loss, costs, damages, or expenses incurred or sustained by anyone resulting from any interpretation made by any of our officers, agents or employees. These interpretations are also subject to our general terms and conditions set out in our current Price Schedule.

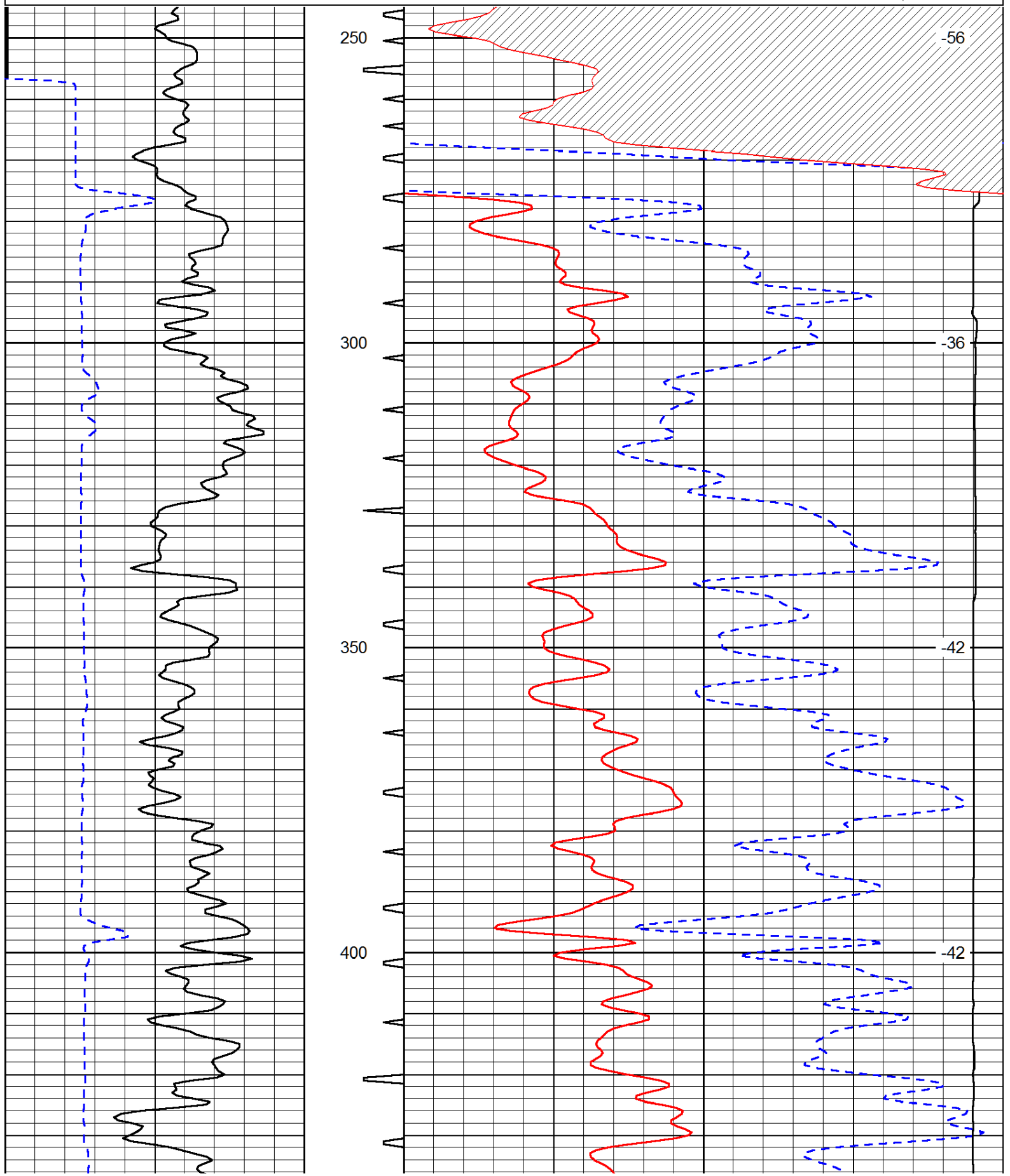
Comments

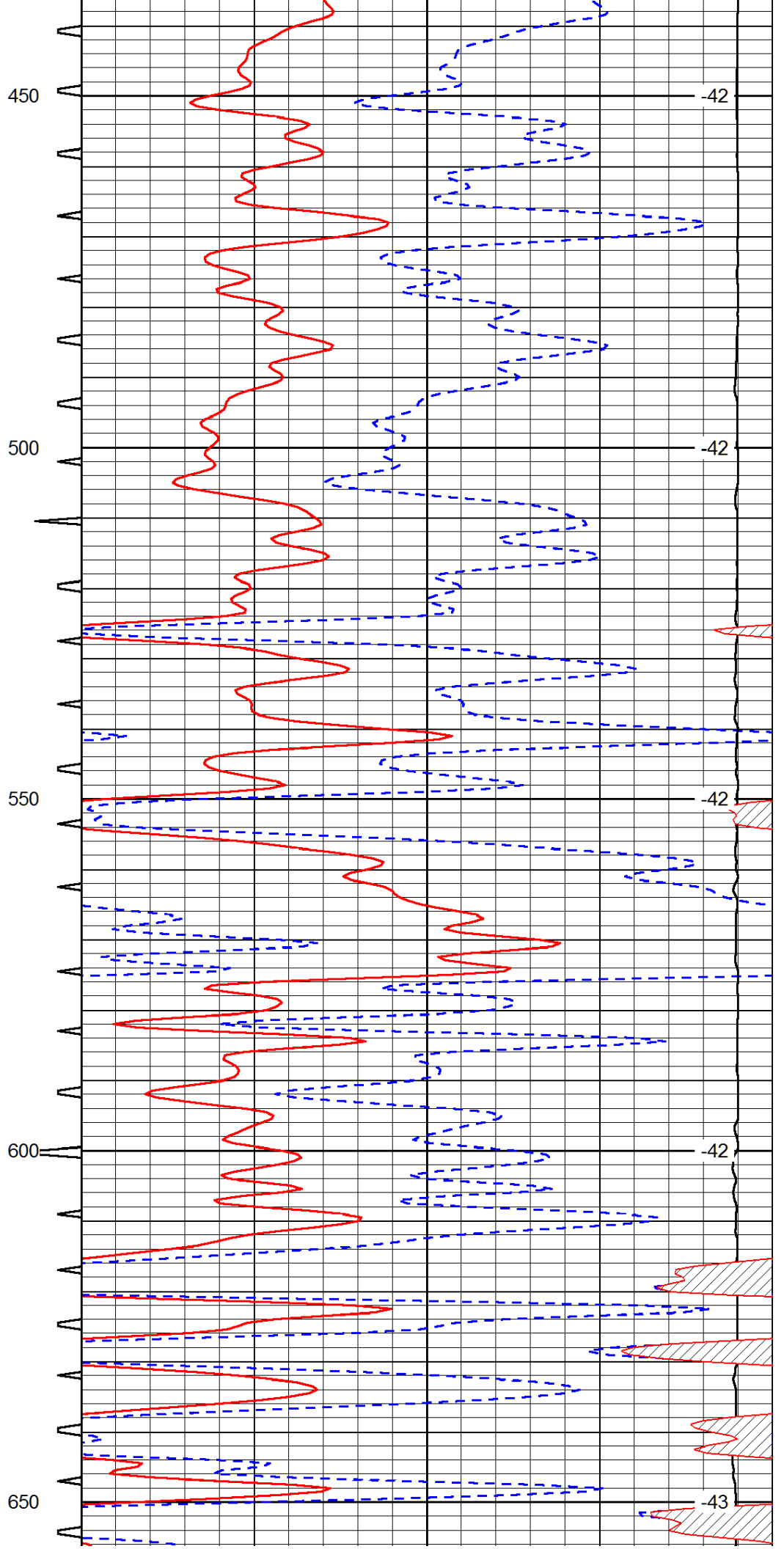
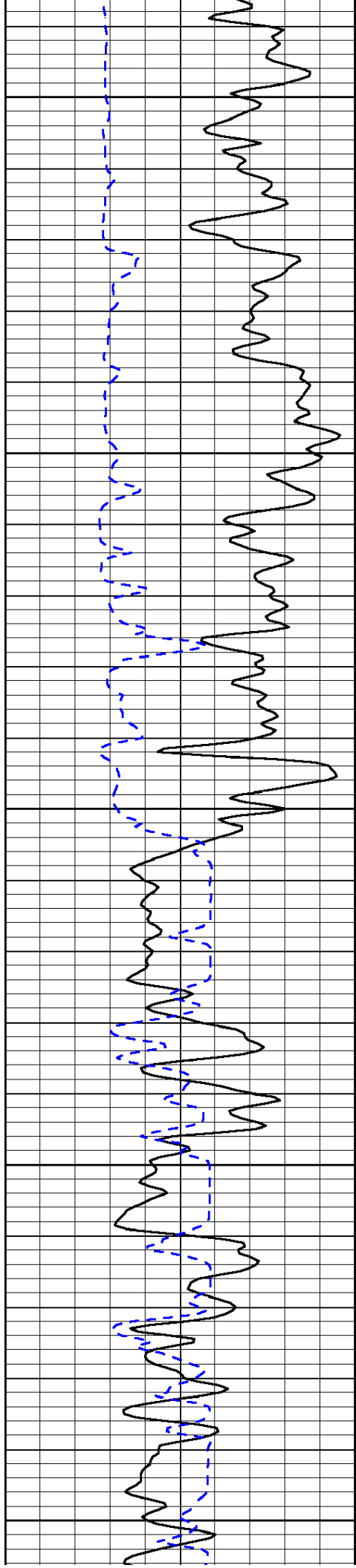
Thank you for using Log-Tech, Inc.
(785) 625-3858

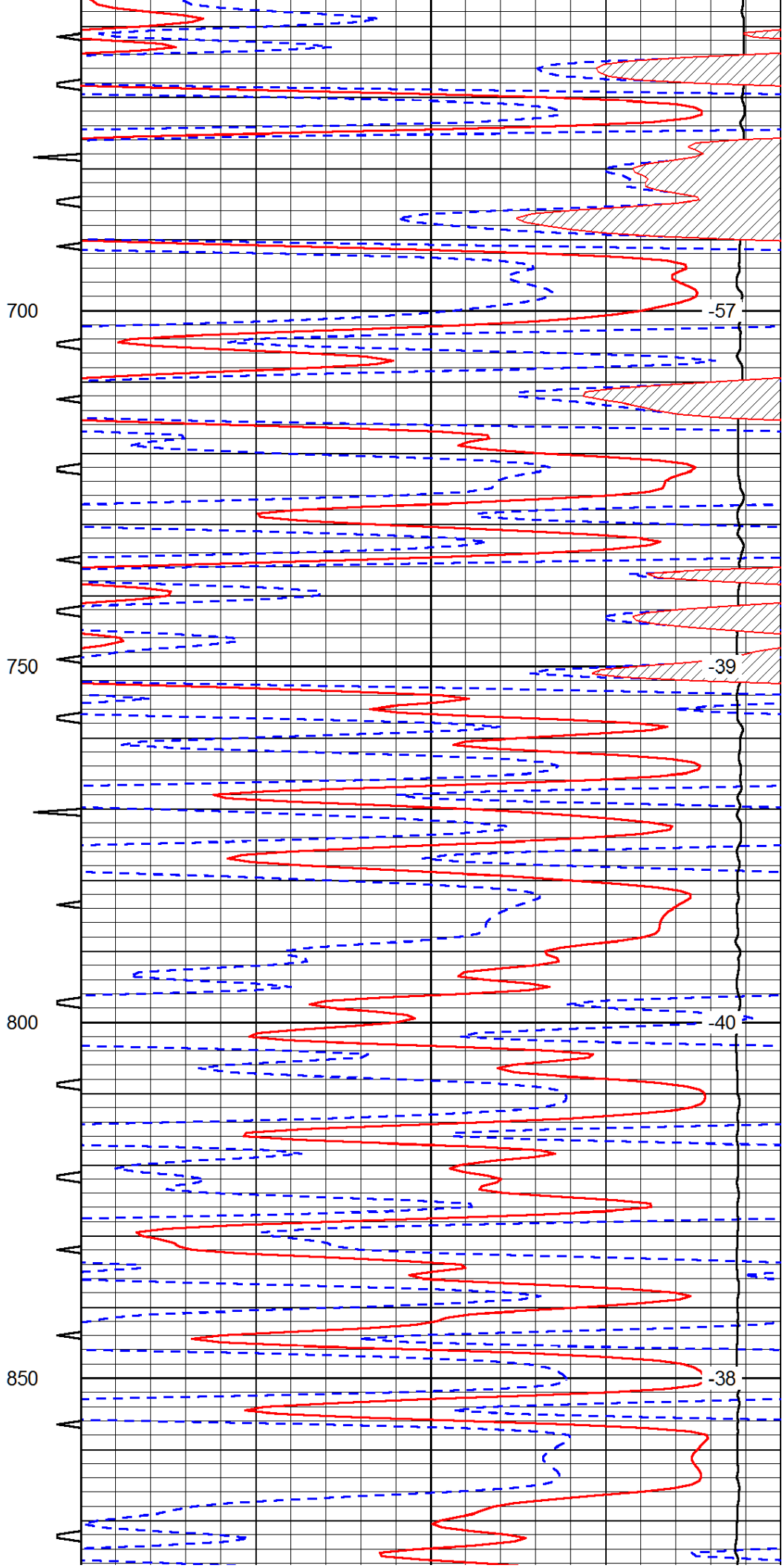
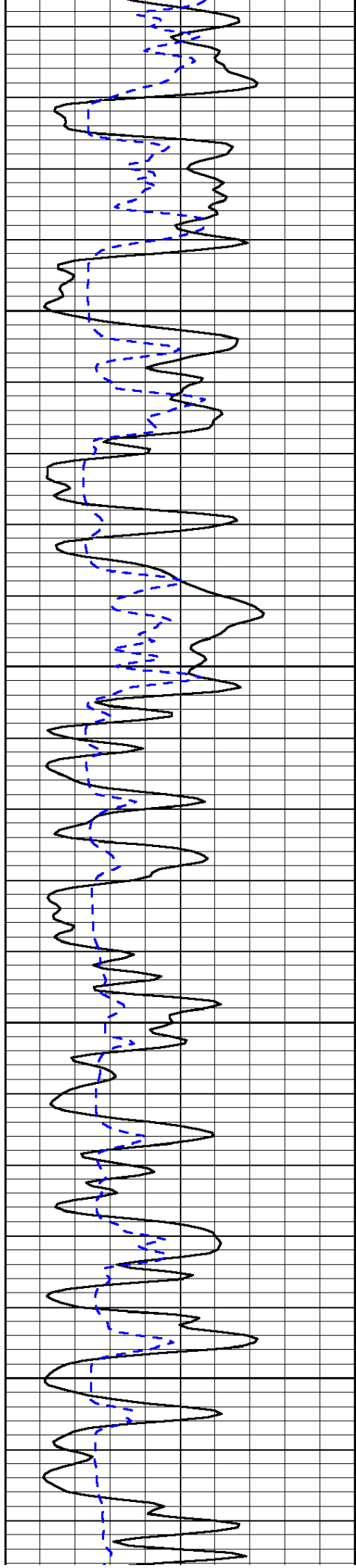
Caldwell KS, 5 North to 130 RD,
3 West, 1/4 South, East Into

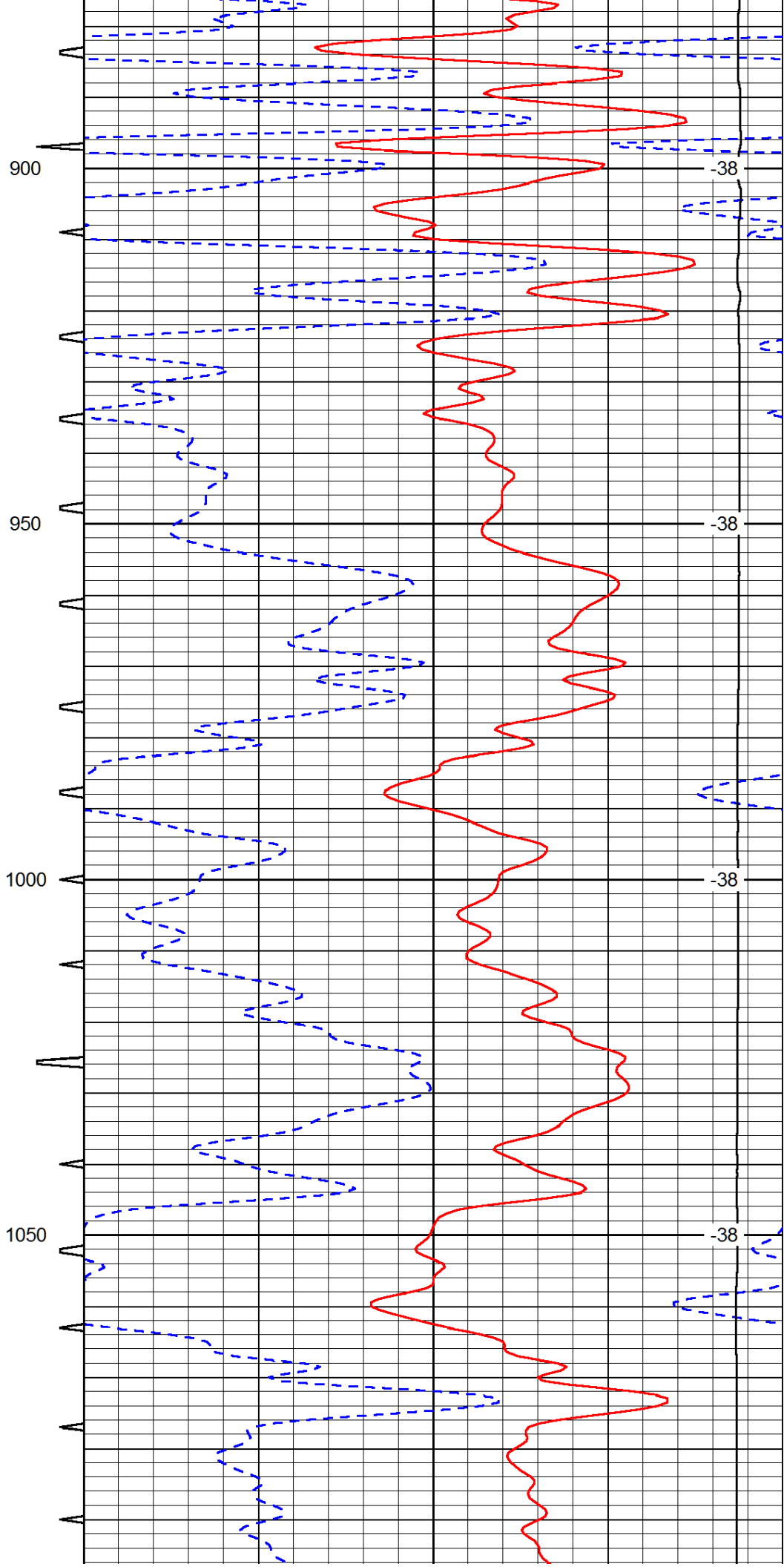
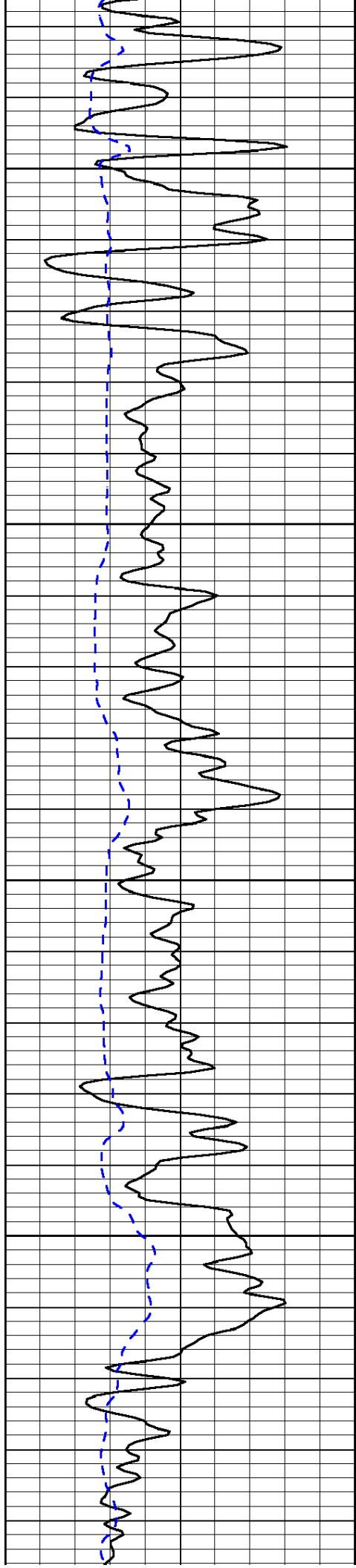
Database File: energyinvest_turek_1_16hd.db
 Dataset Pathname: DIL/engstk
 Presentation Format: sonic
 Dataset Creation: Wed May 08 21:42:20 2013
 Charted by: Depth in Feet scaled 1:240

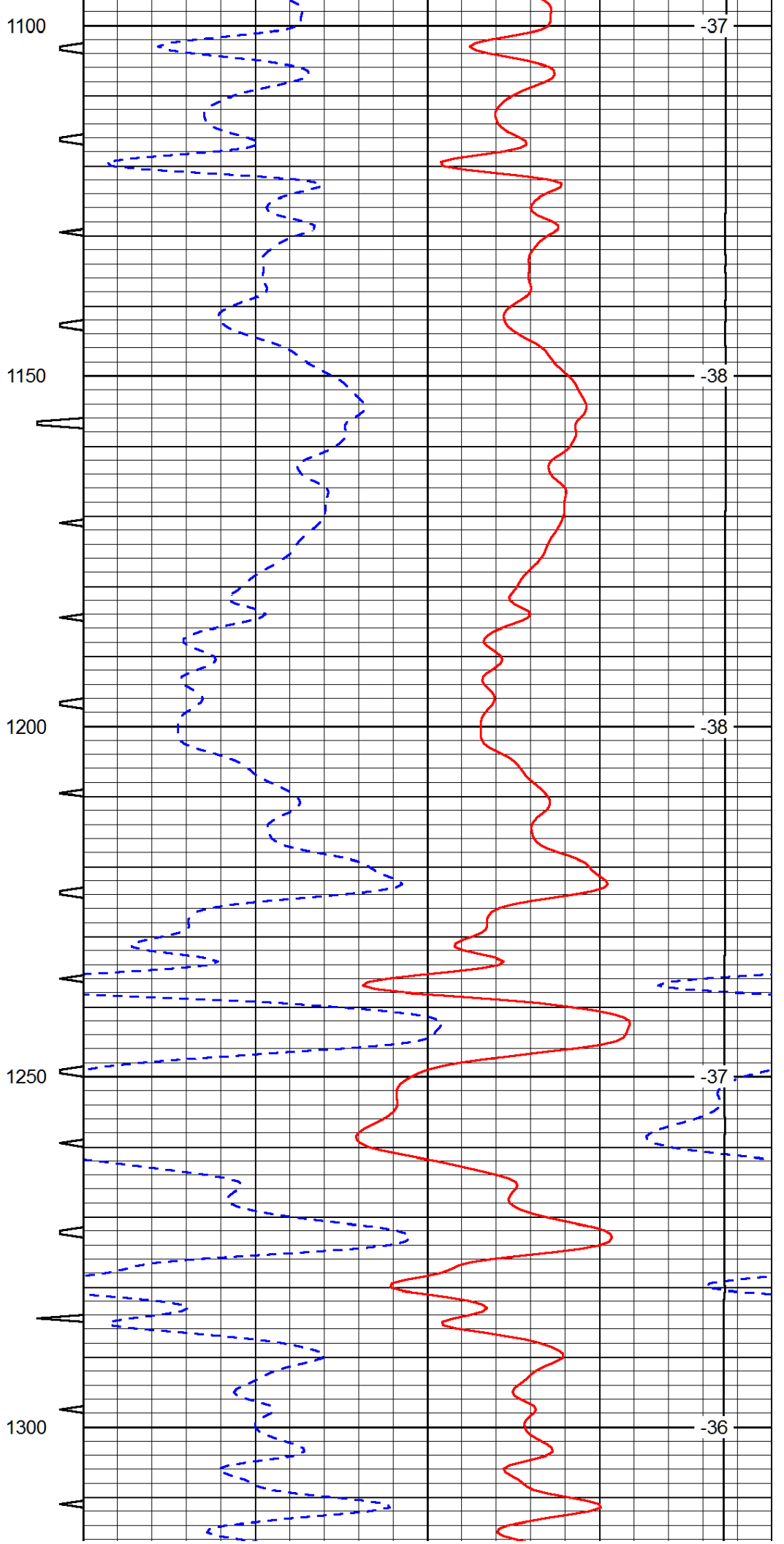
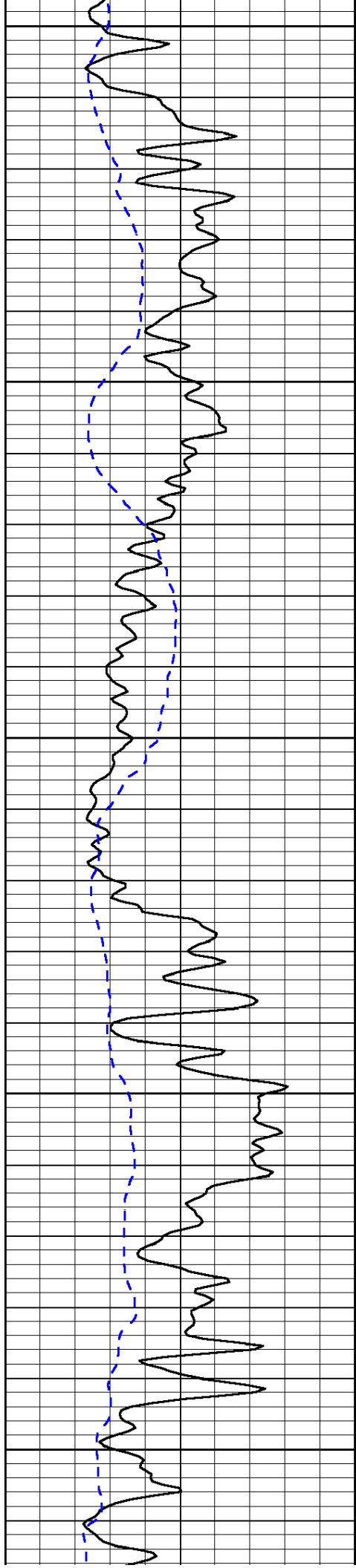
| | | | | | | |
|-----|------------------|-----|------------|-------|--------------------------------|---------------|
| 0 | Gamma Ray (GAPI) | 150 | Sonic Int | 140 | Delta Time (usec/ft) (usec/ft) | 40 |
| 150 | Gamma Ray (GAPI) | 300 | 5 (msec) 0 | 30 | Sonic Porosity (pu) | -10 |
| 6 | dCAL (in) | 16 | | 15000 | LTEN (lb) (lb) | 0 |
| | | | | | | LSPD (ft/min) |

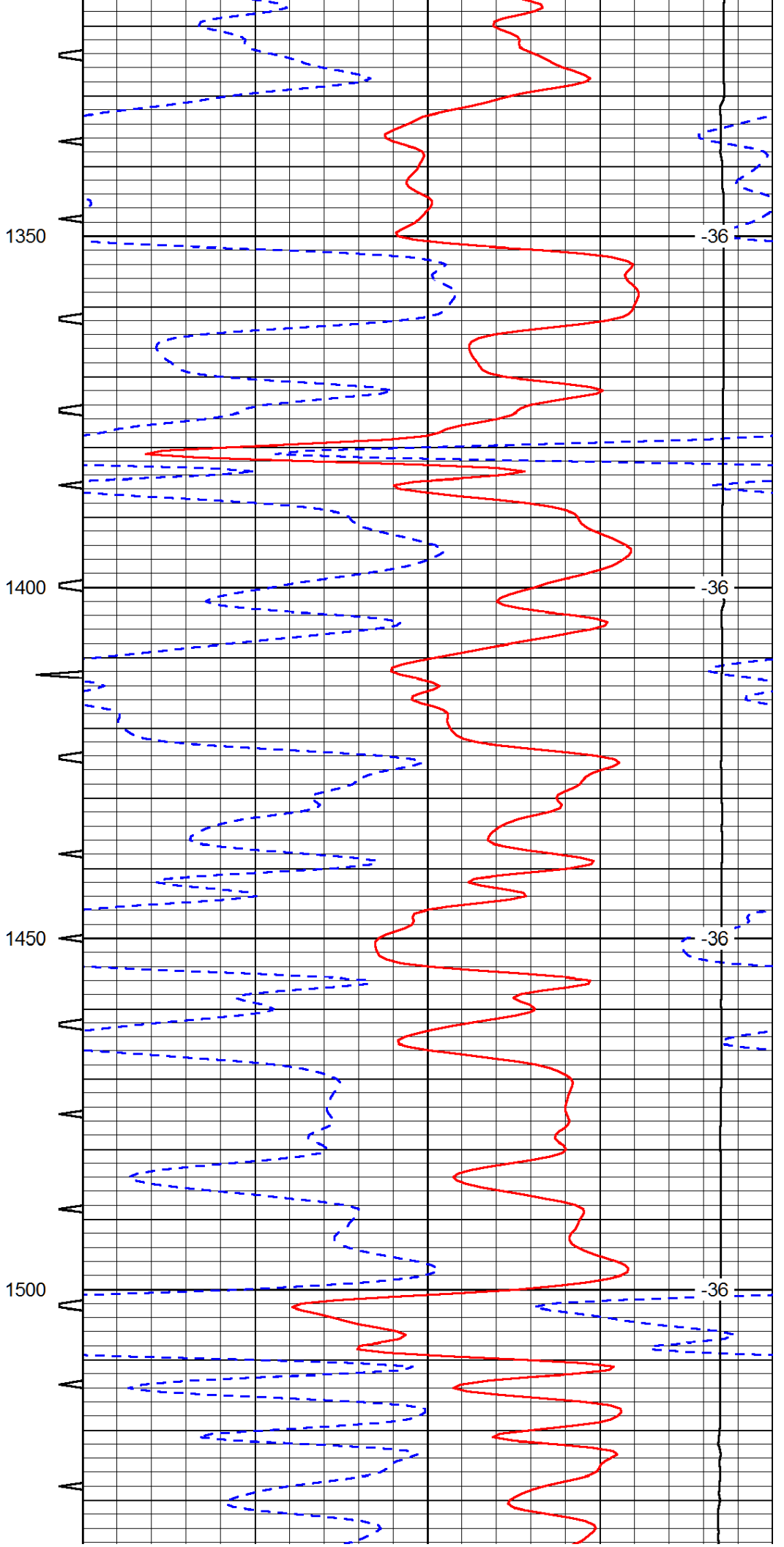
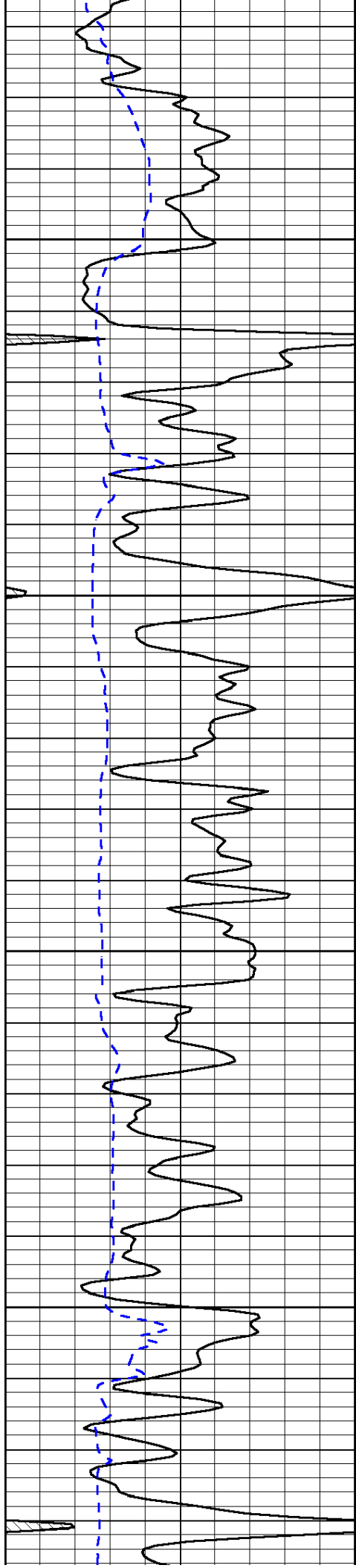


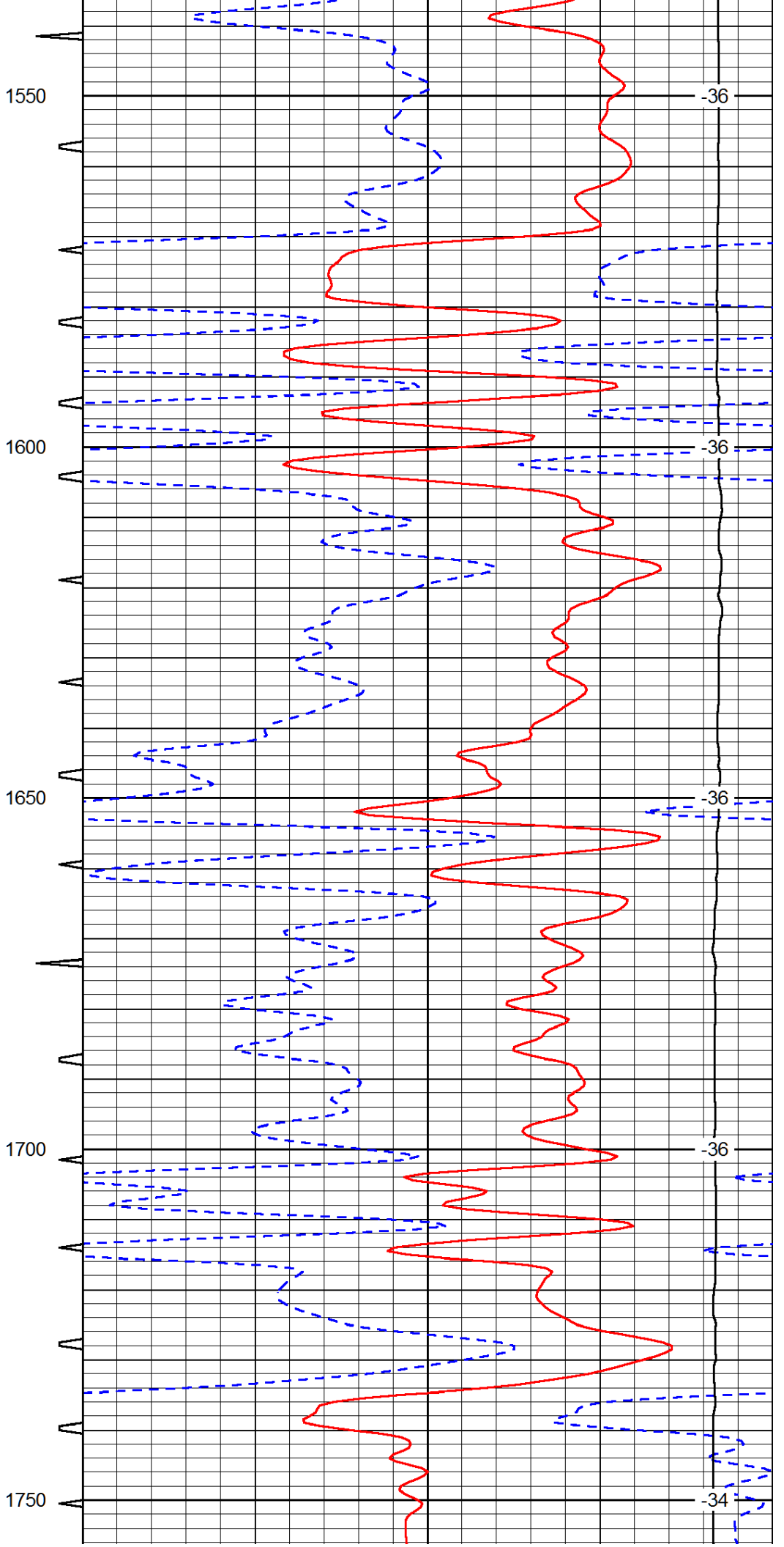
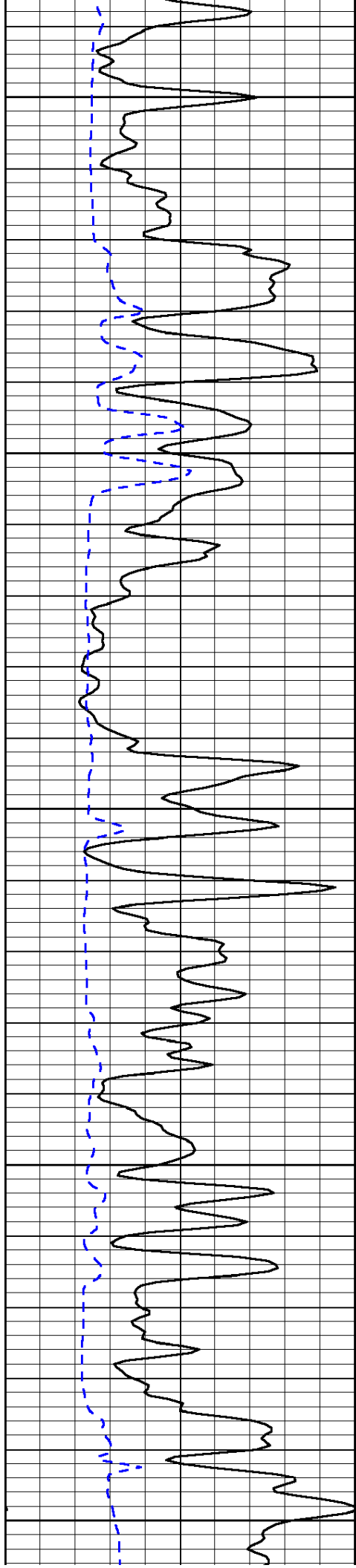


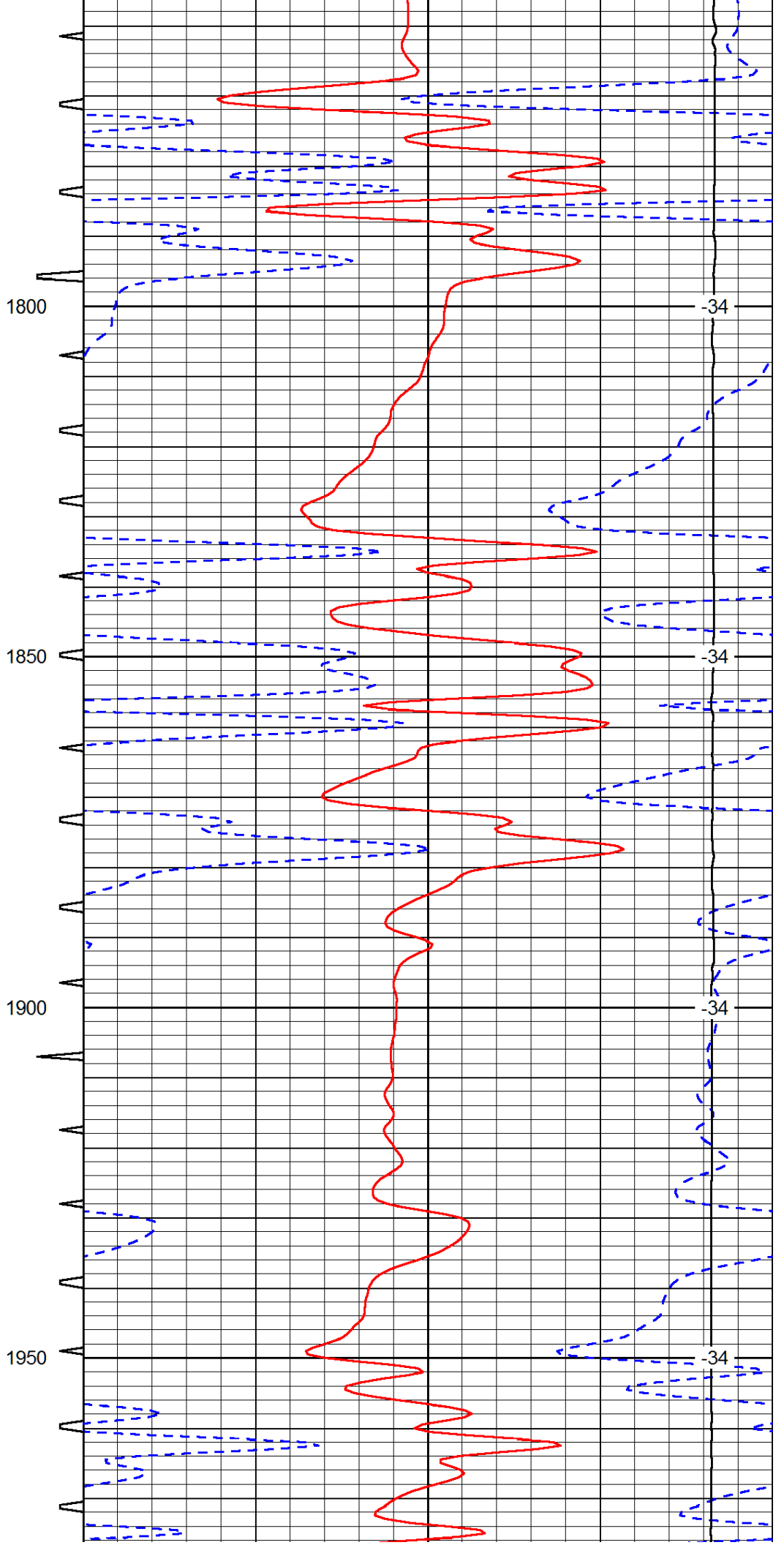
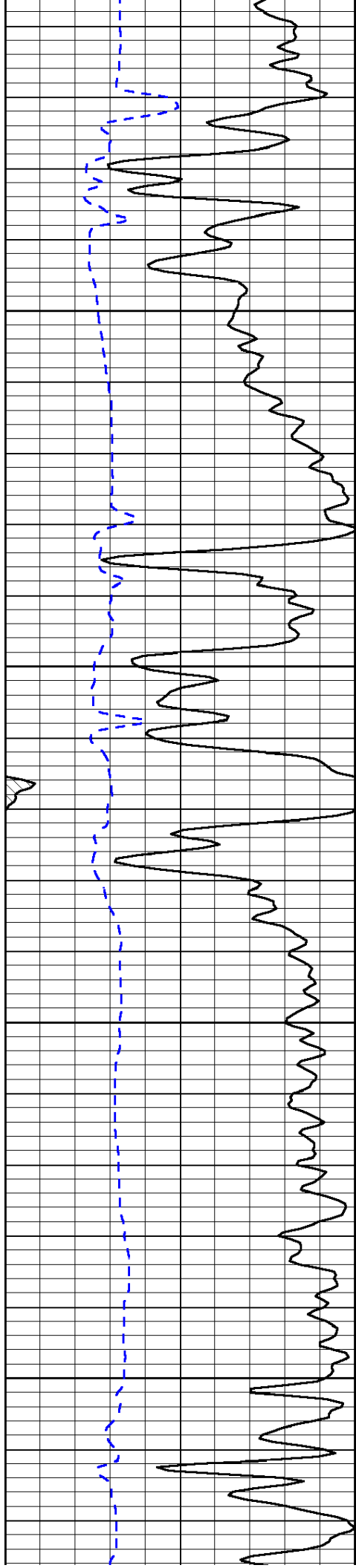


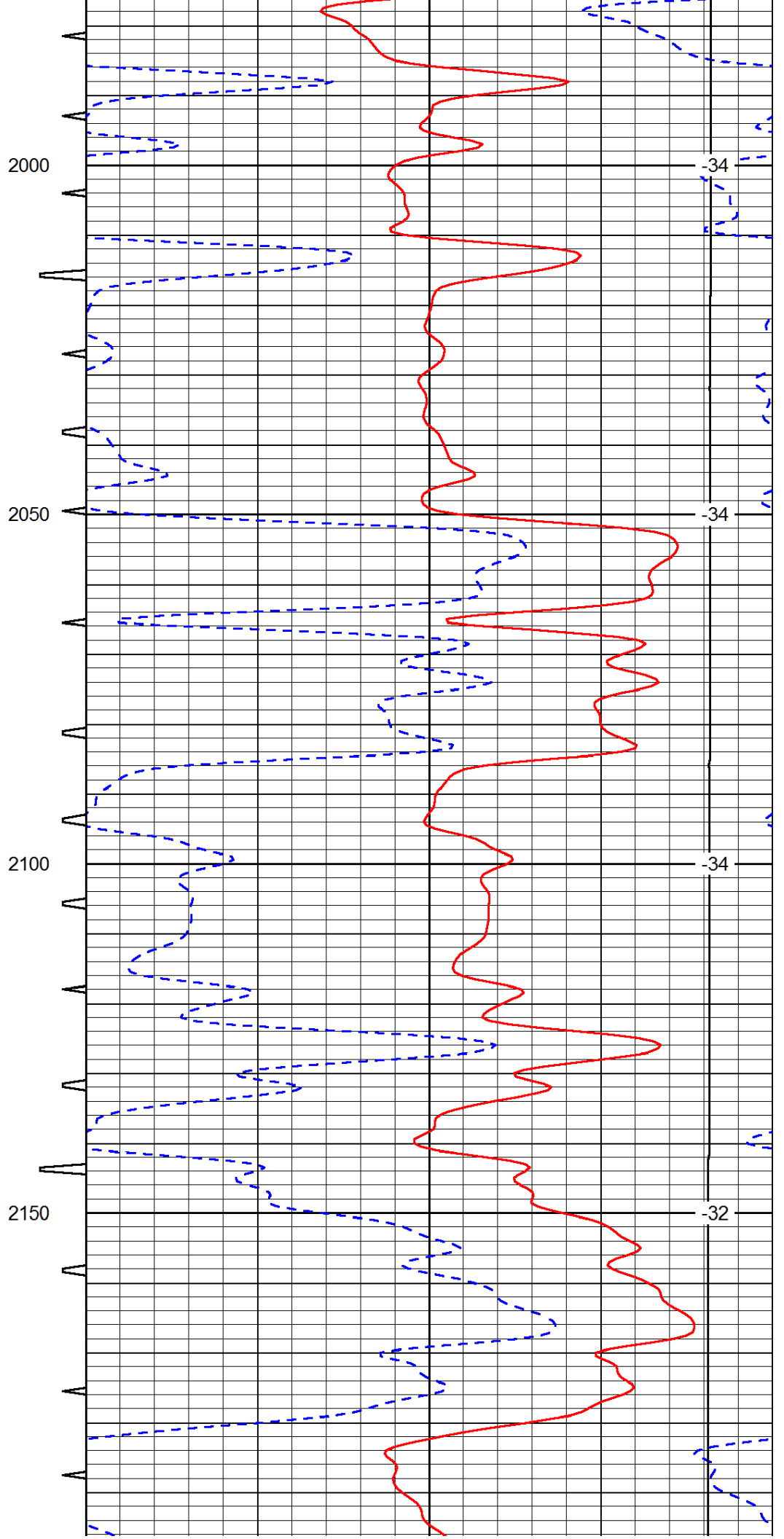
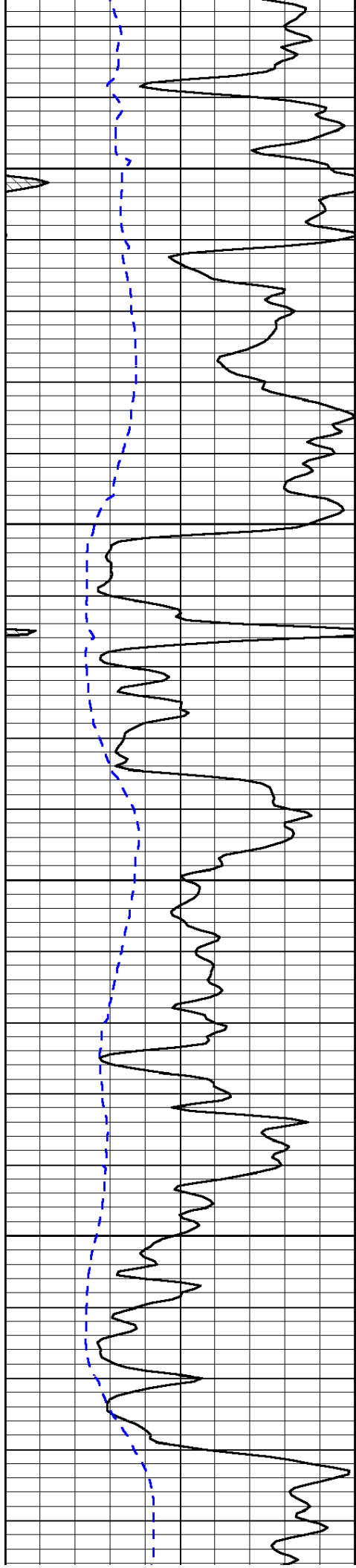


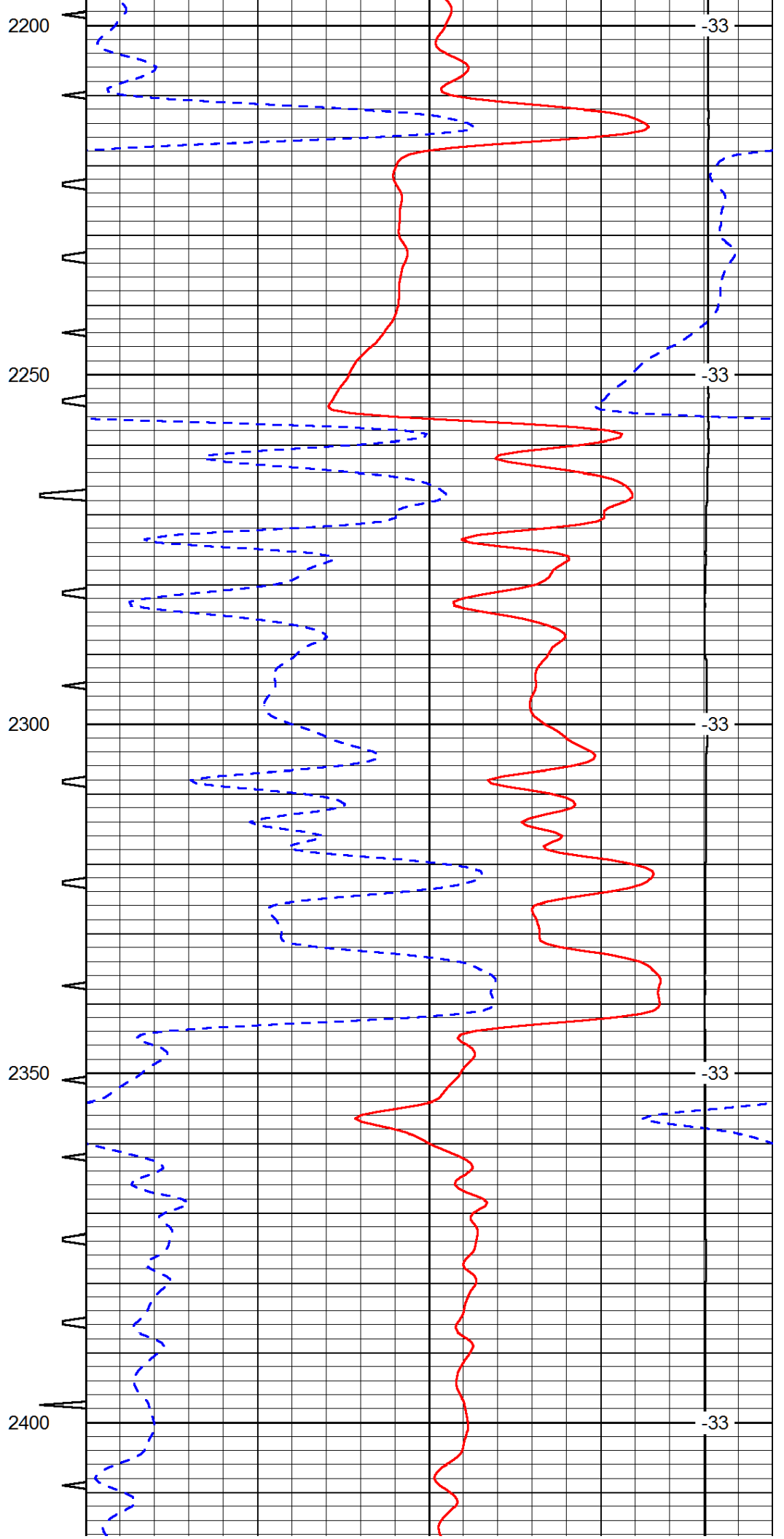
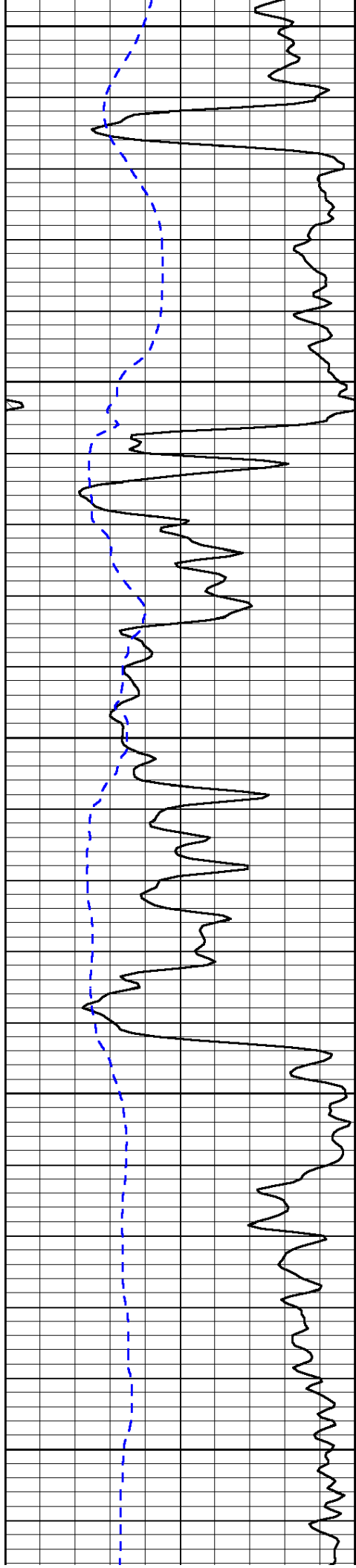


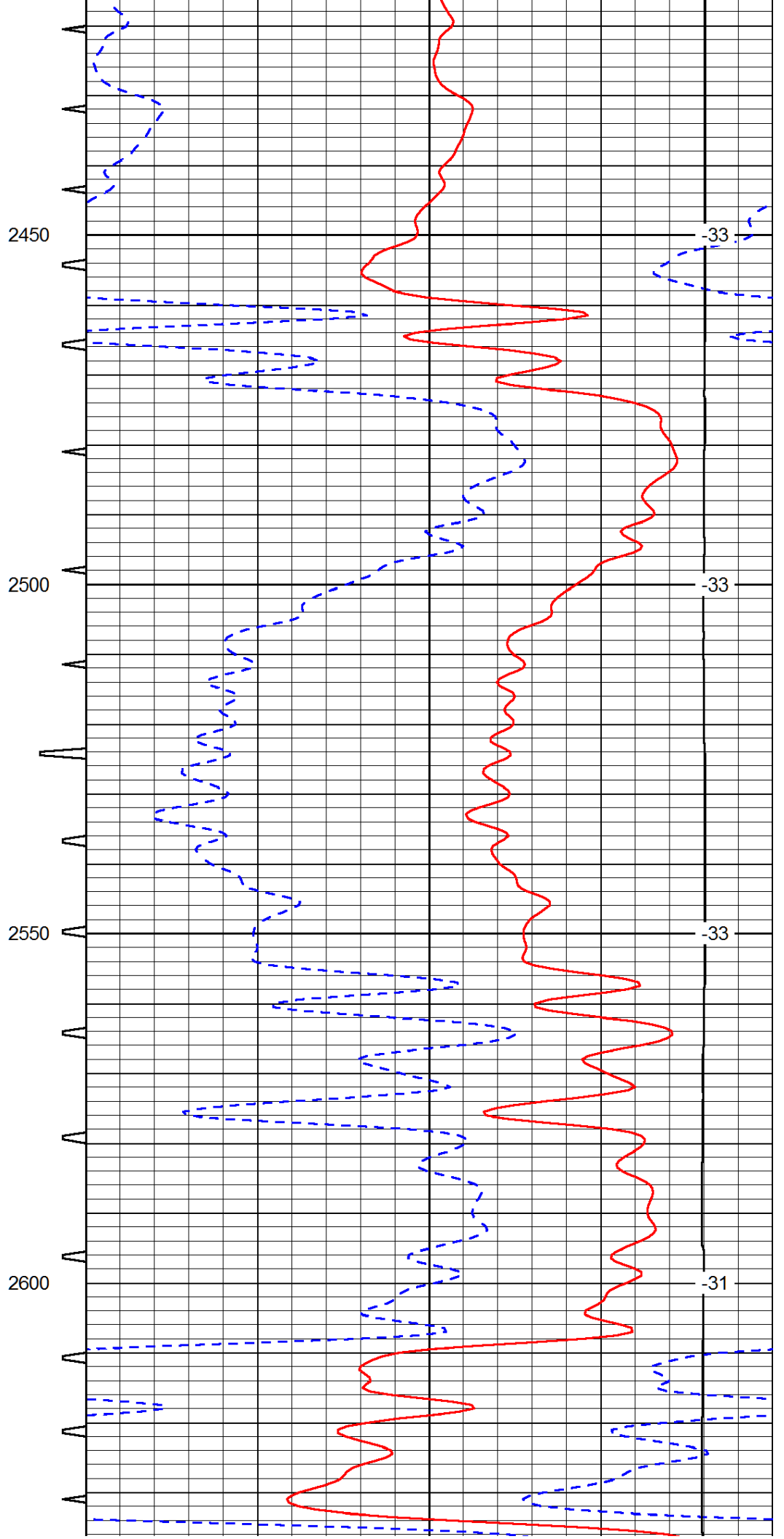
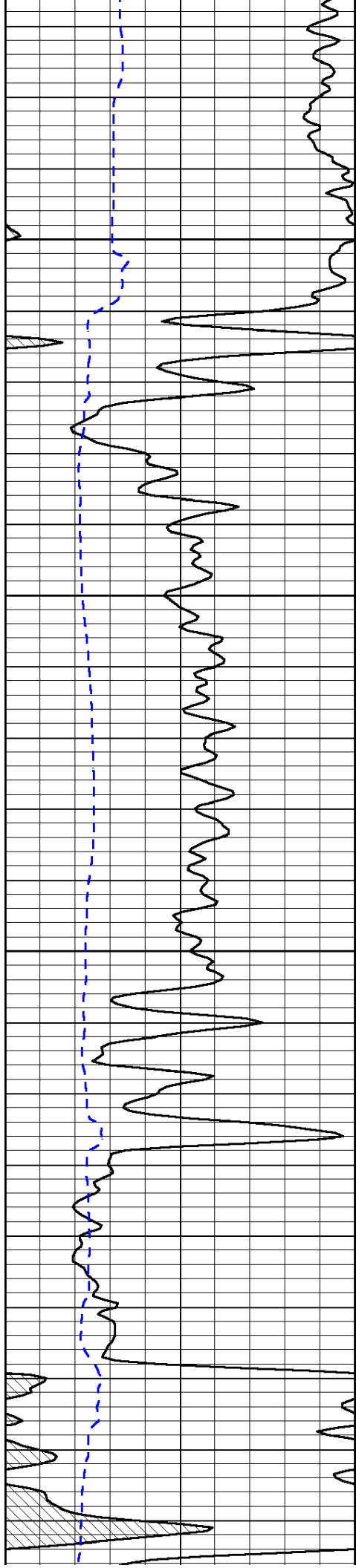


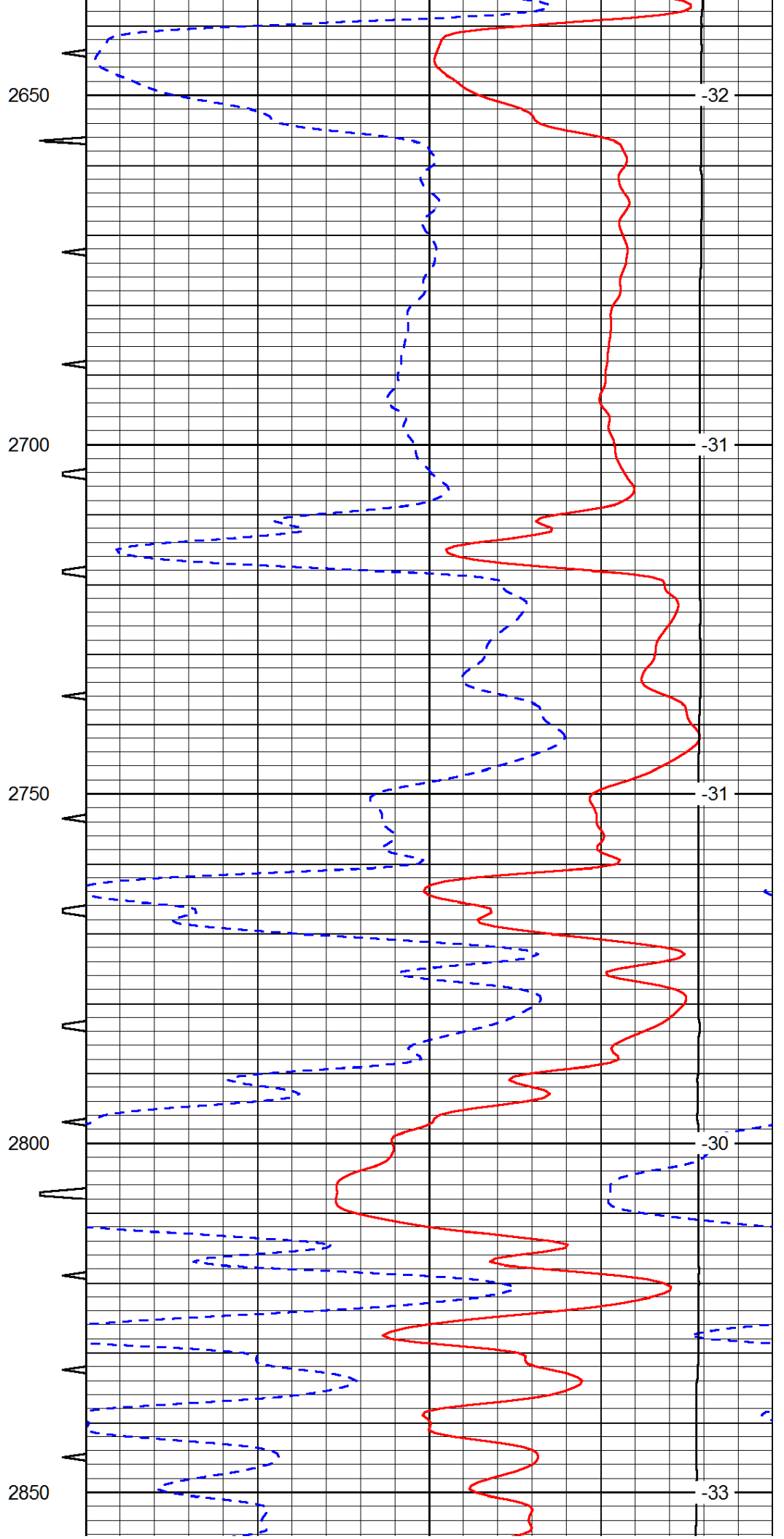
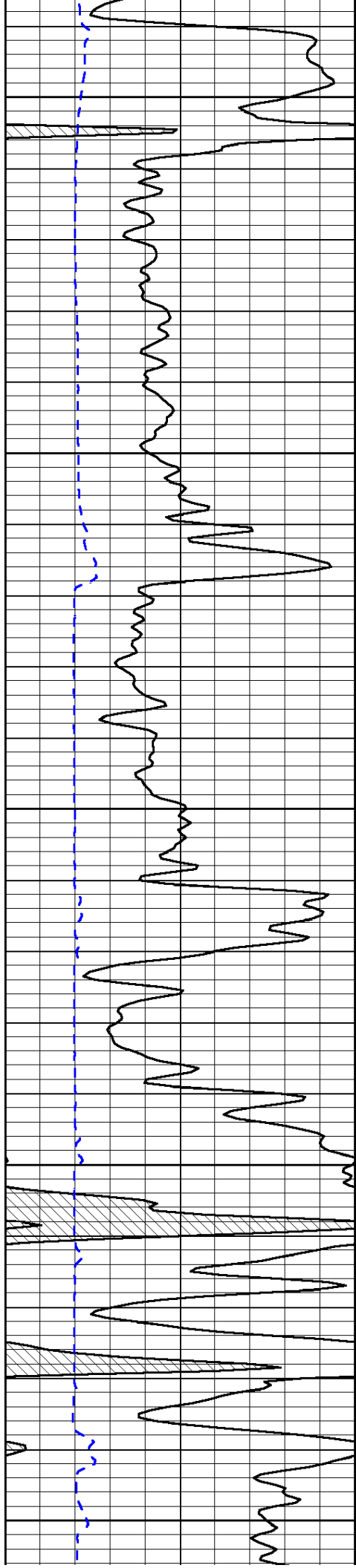


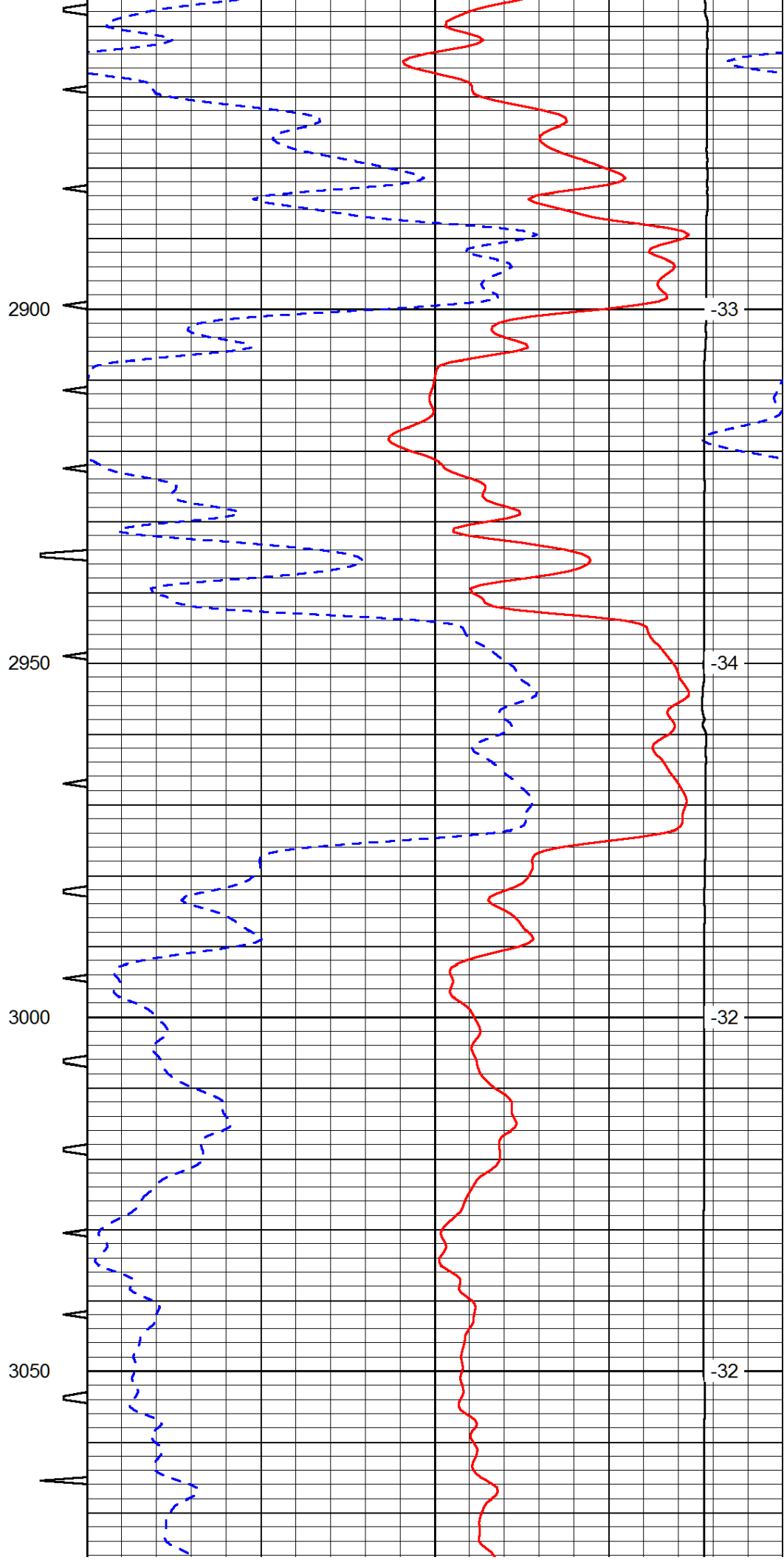
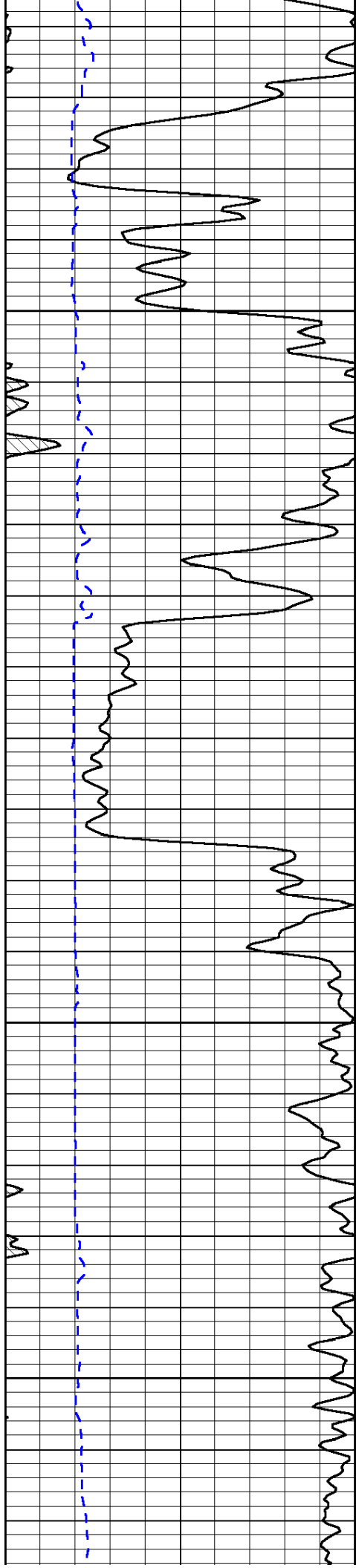


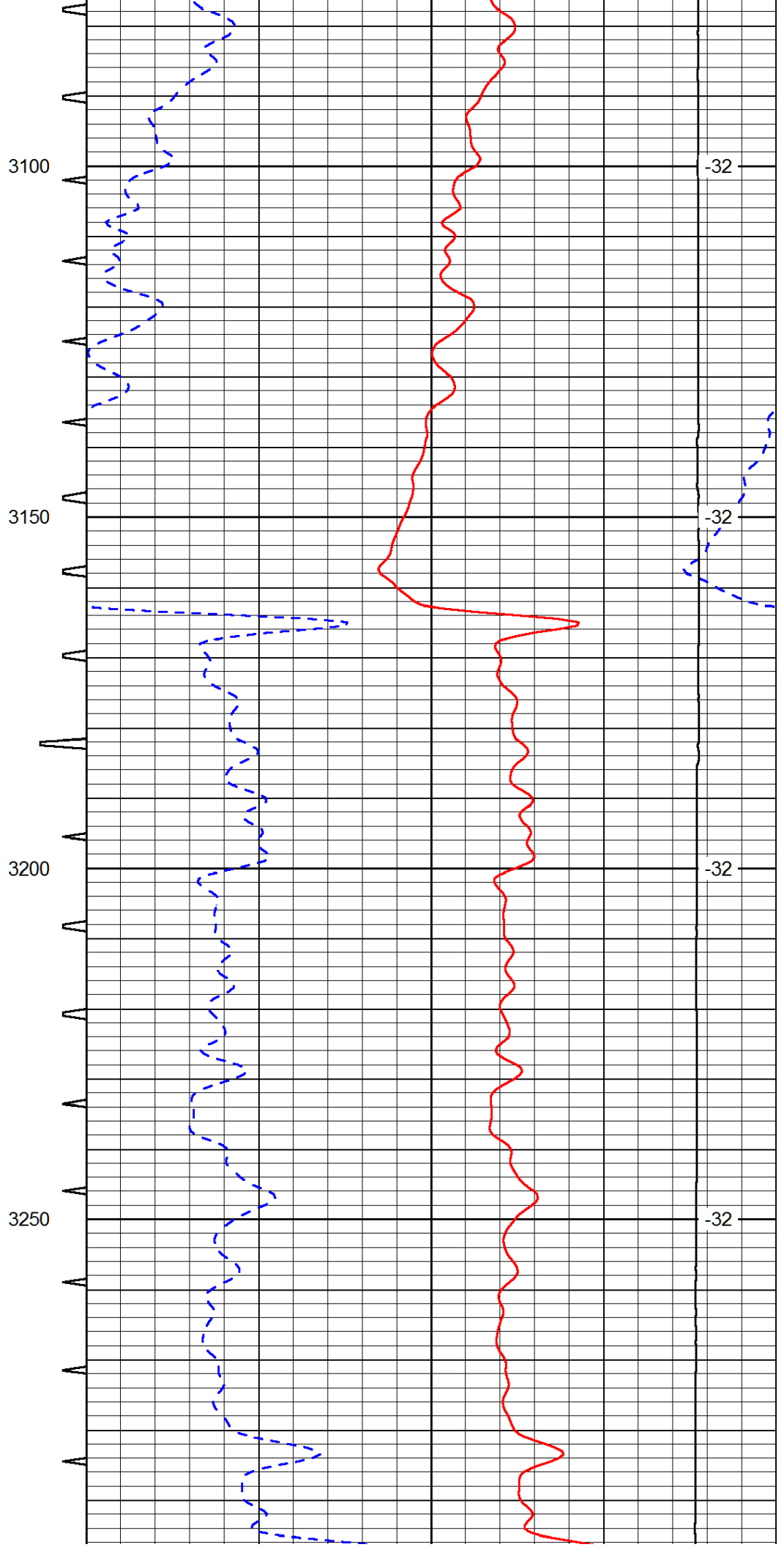
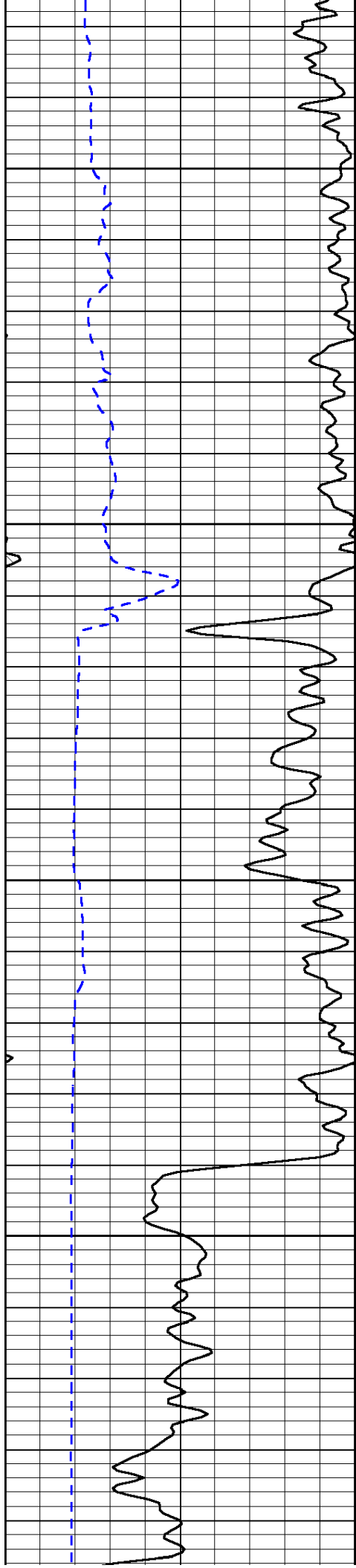


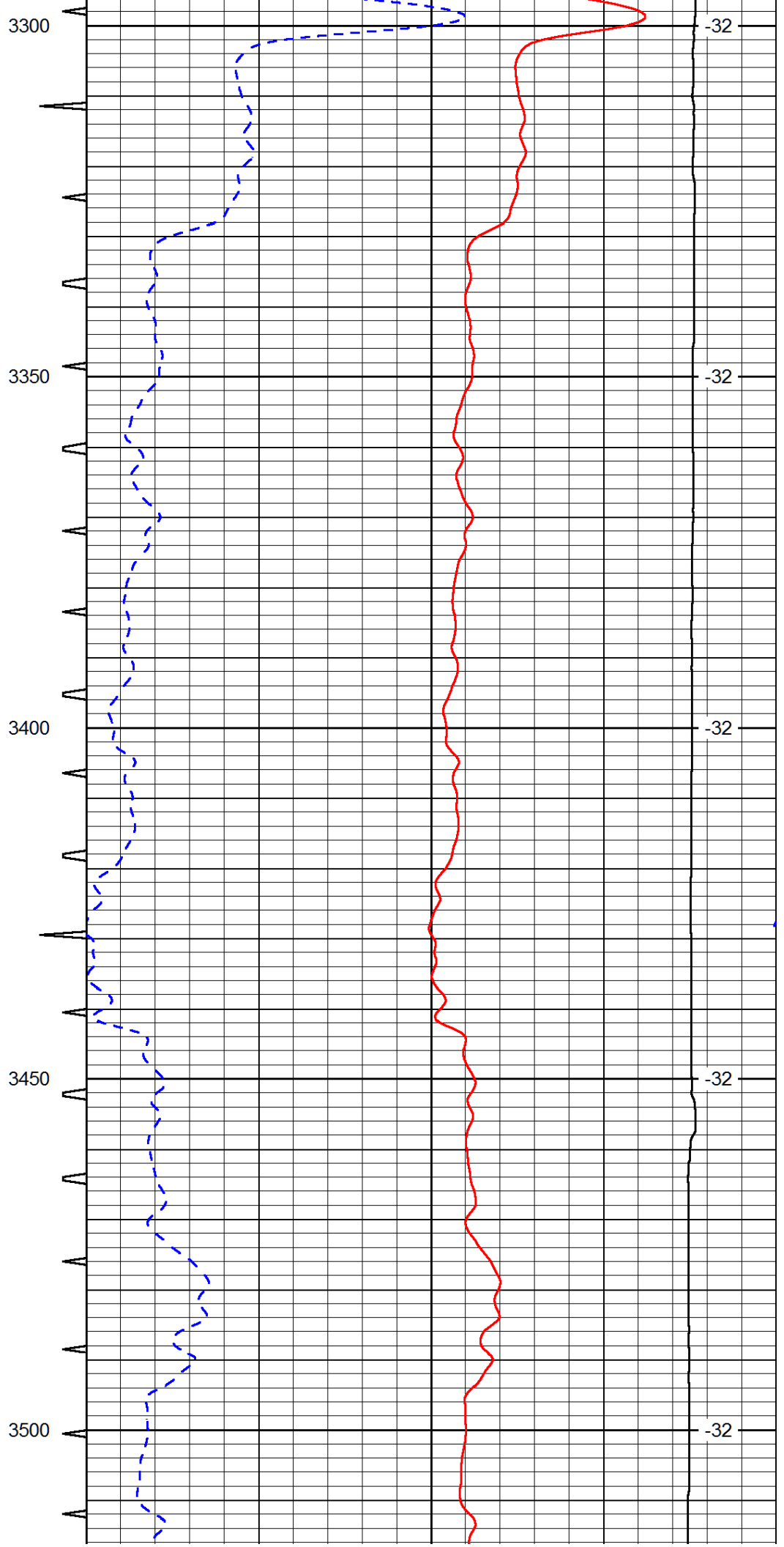
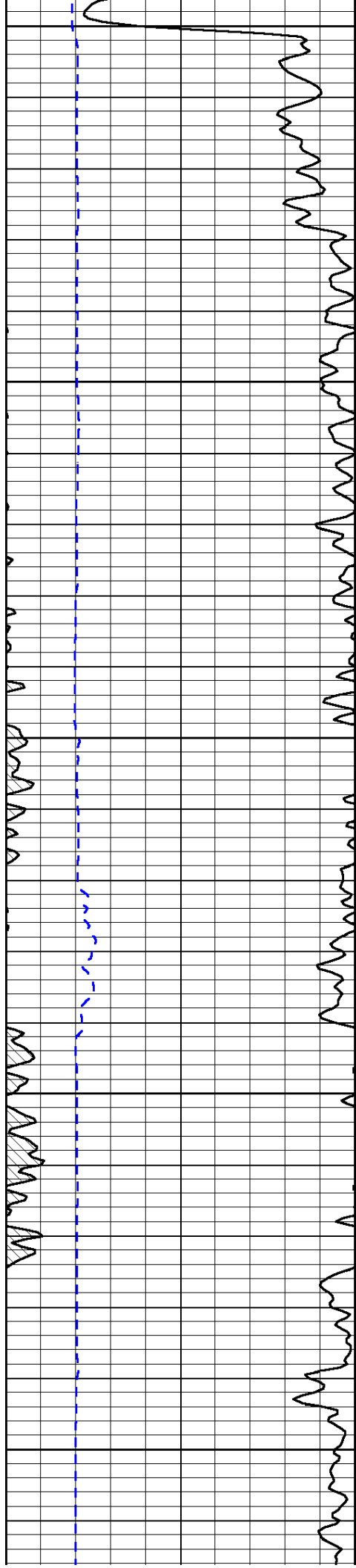


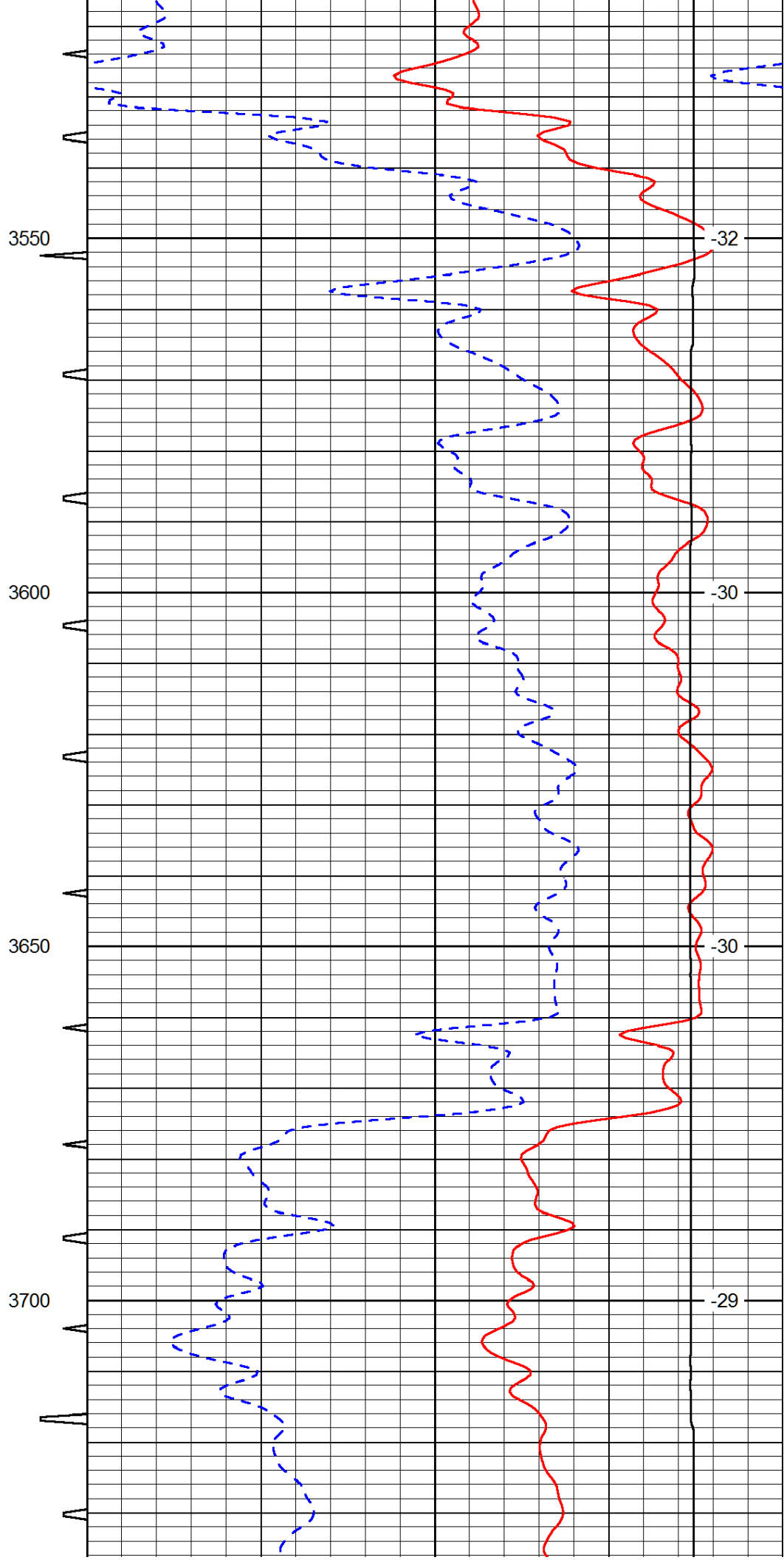
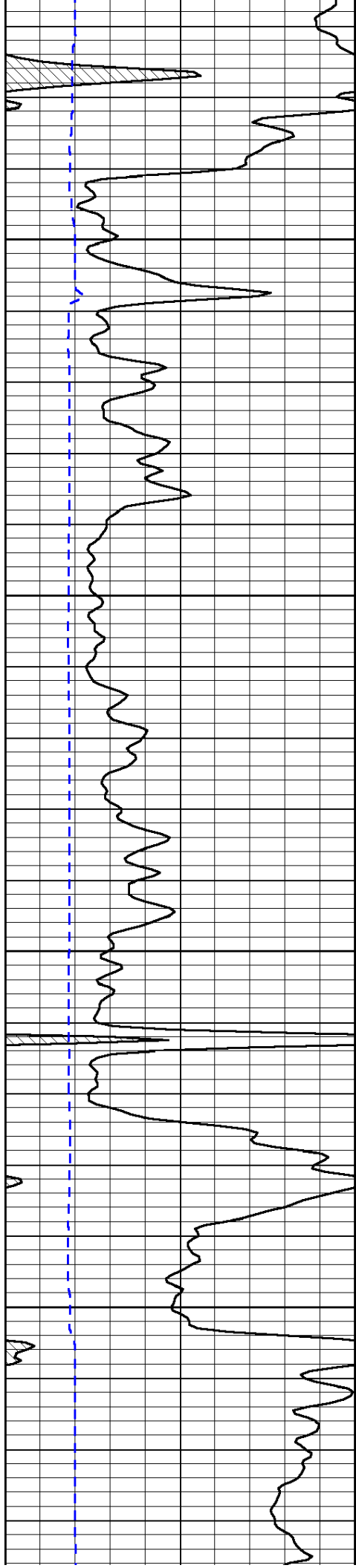


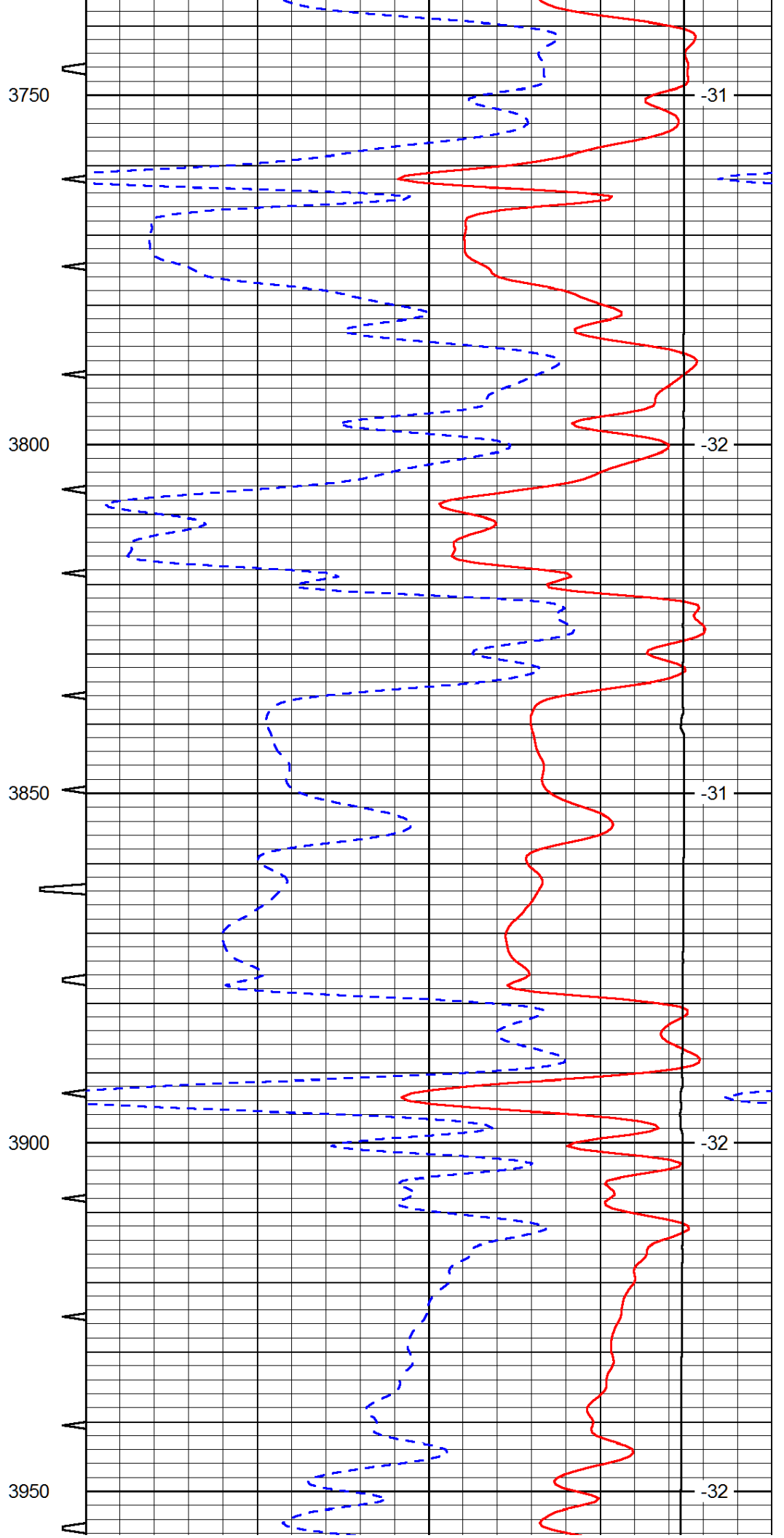
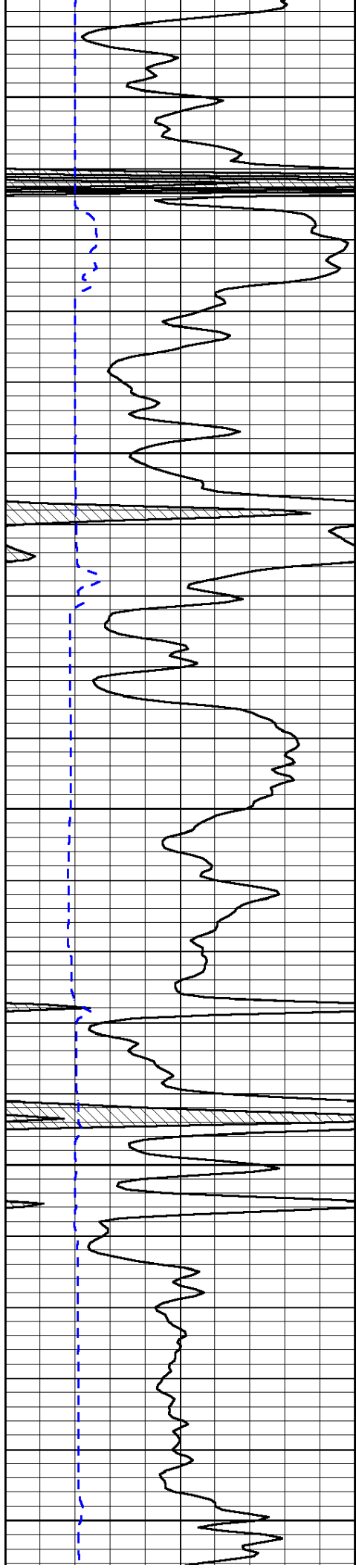


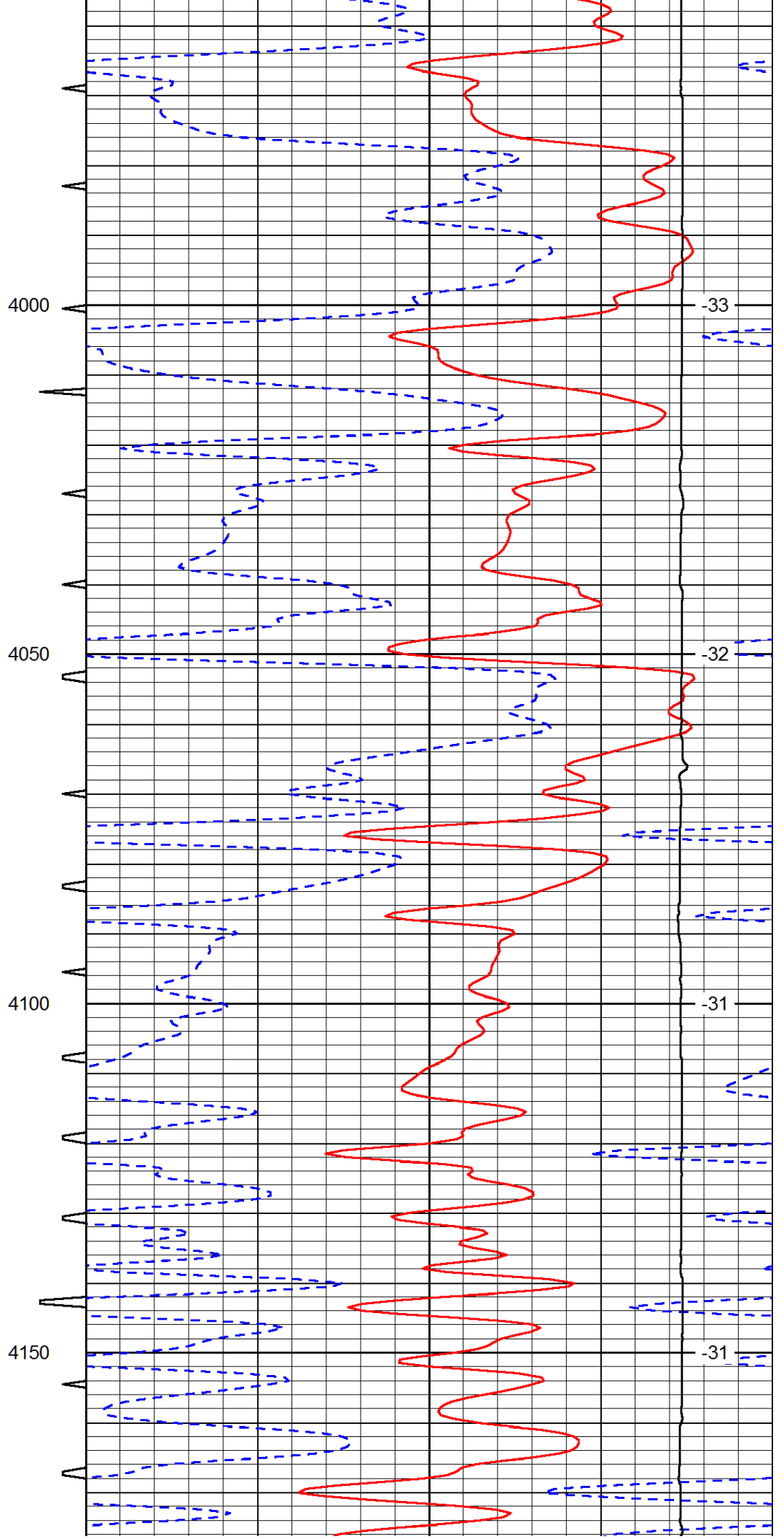
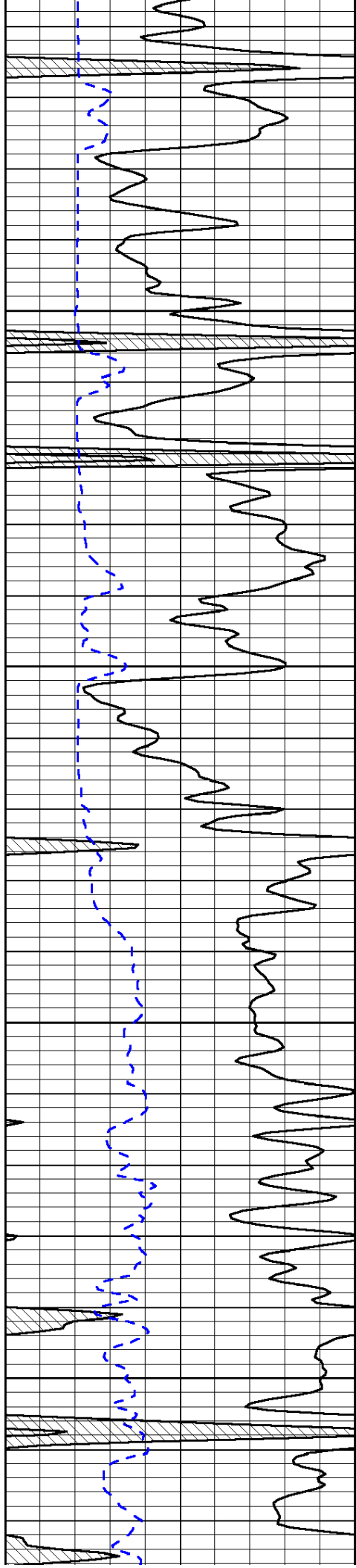


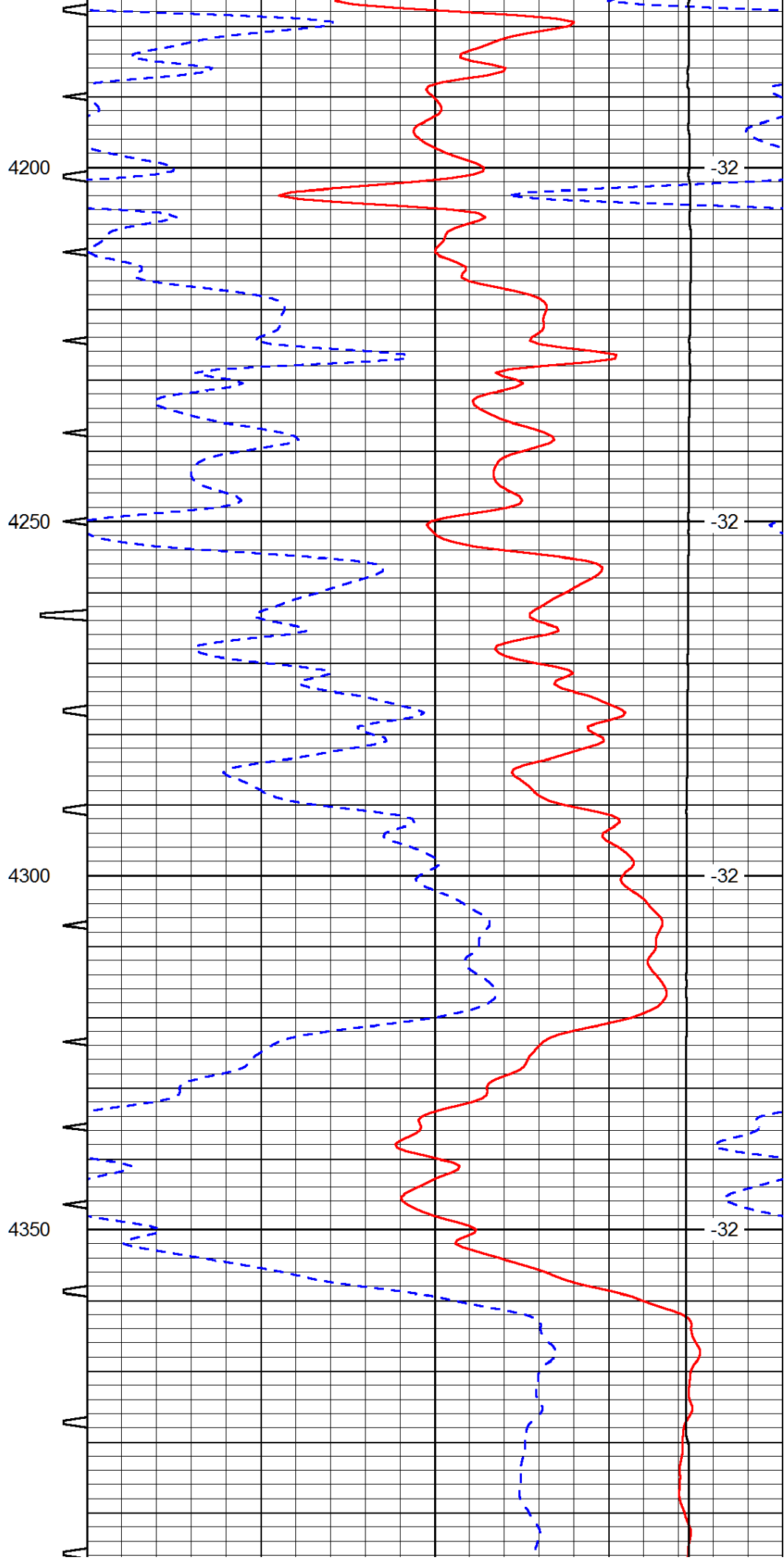
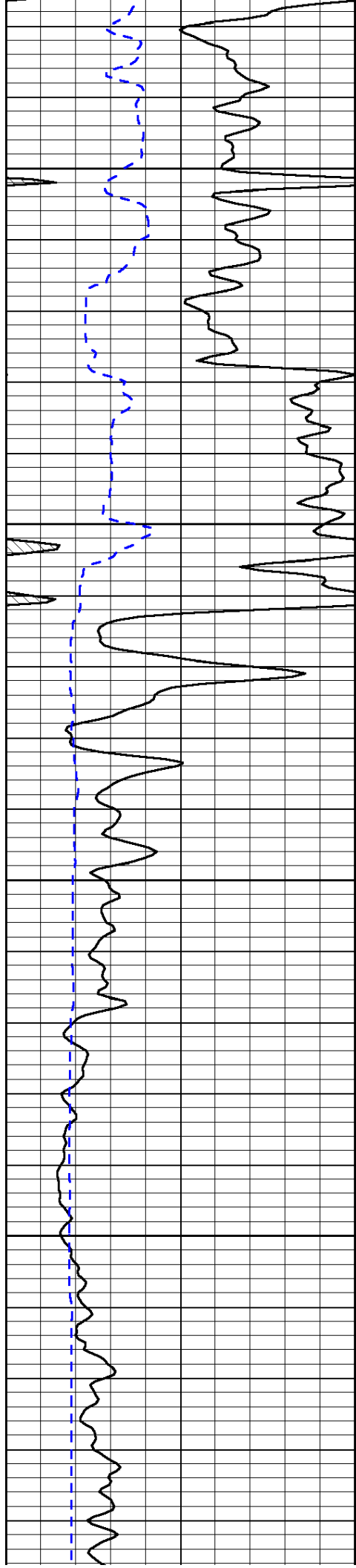


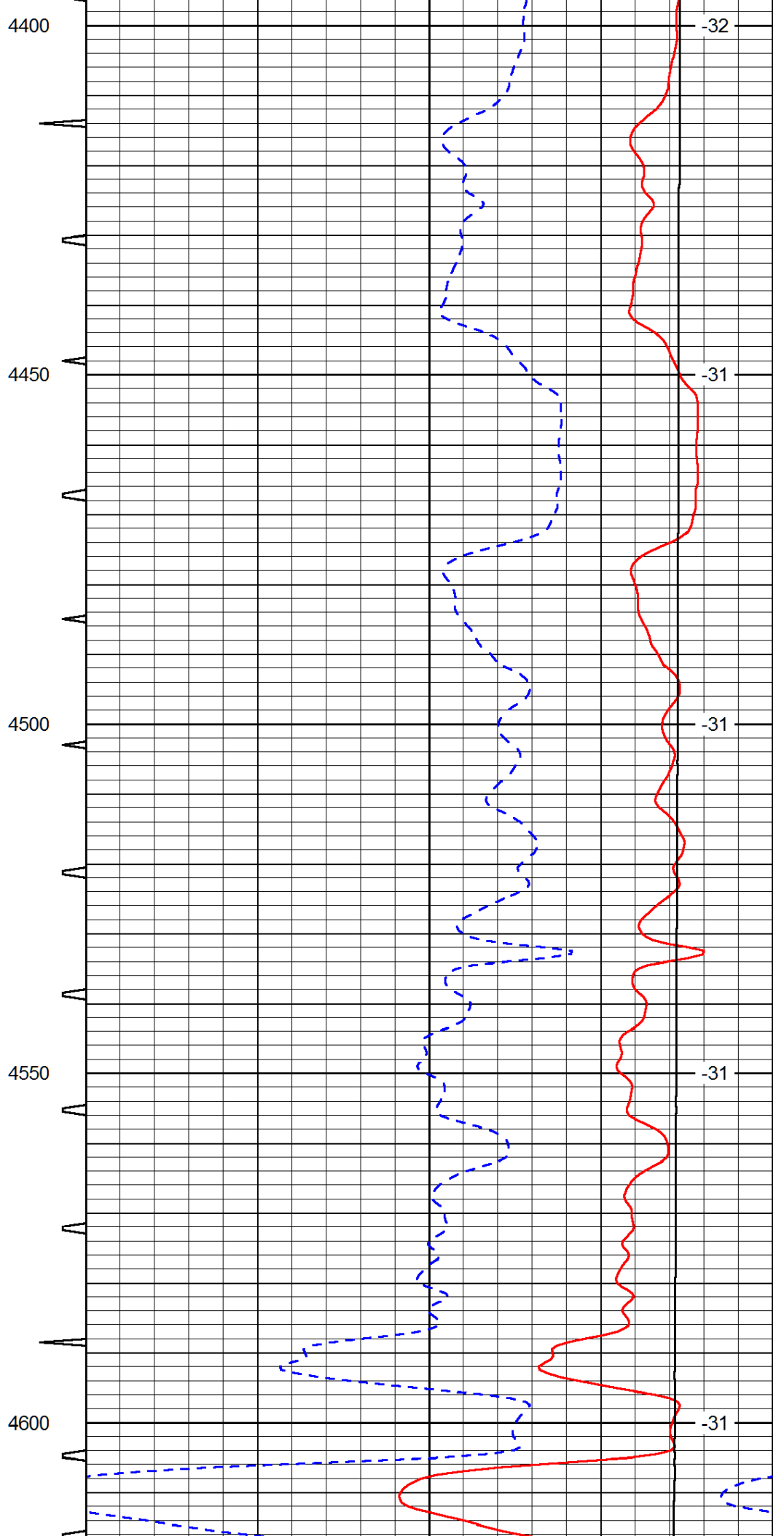
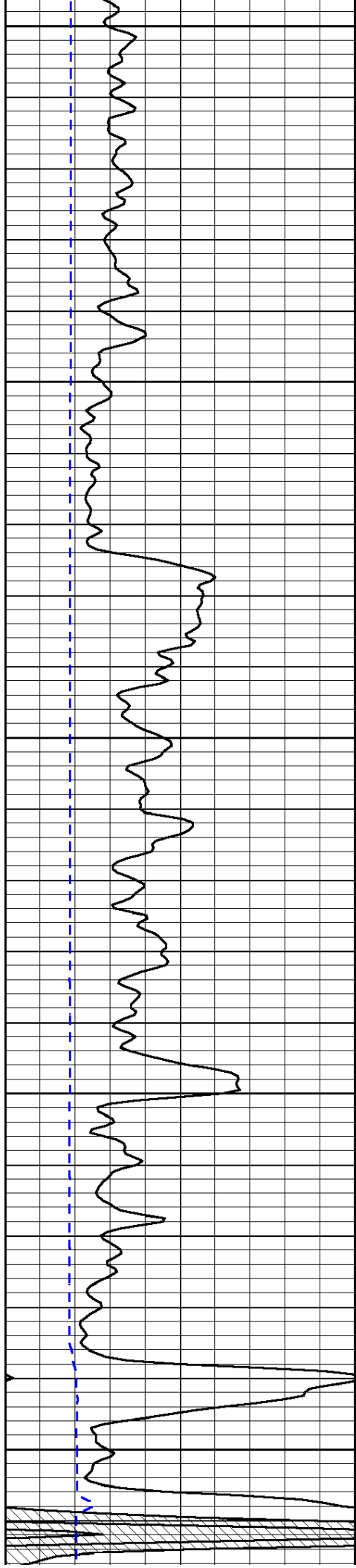


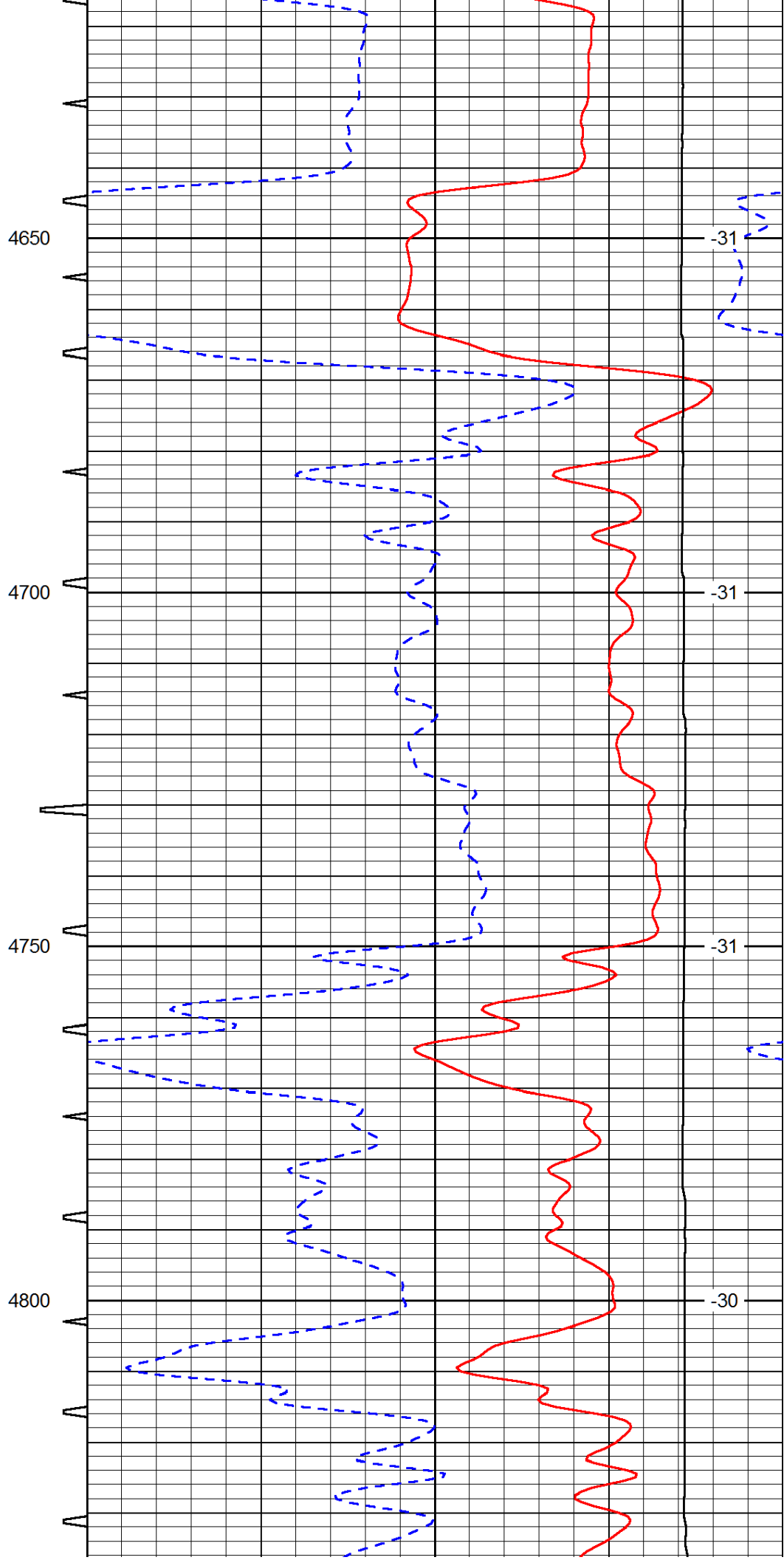
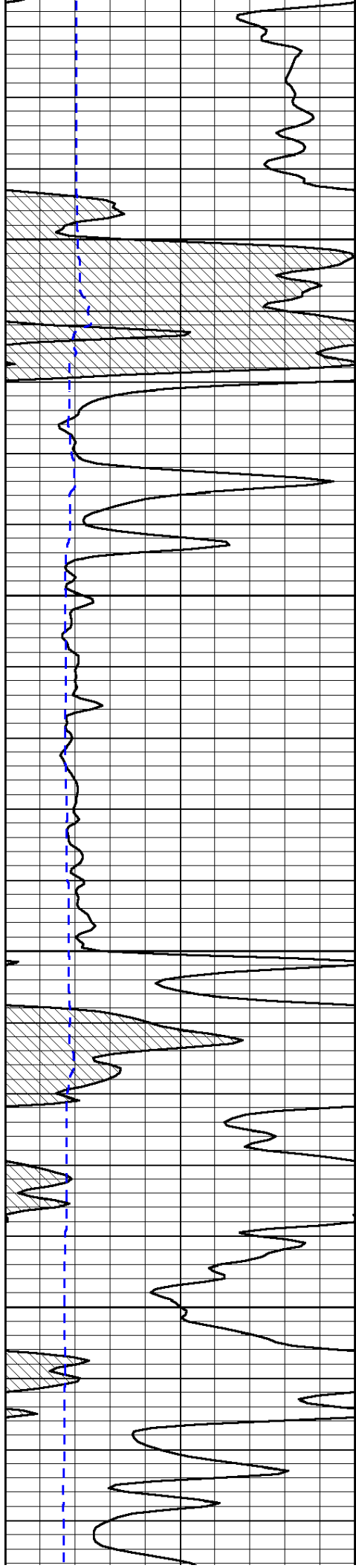


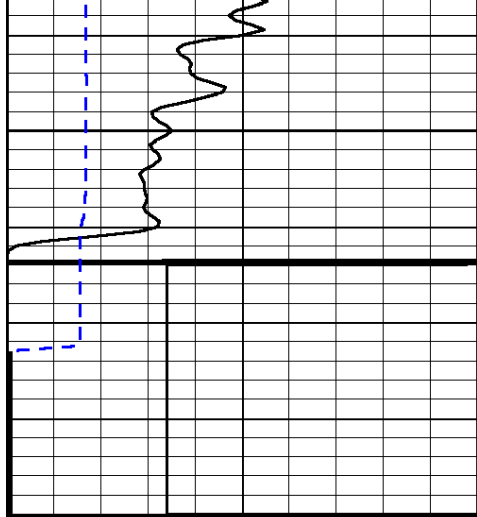




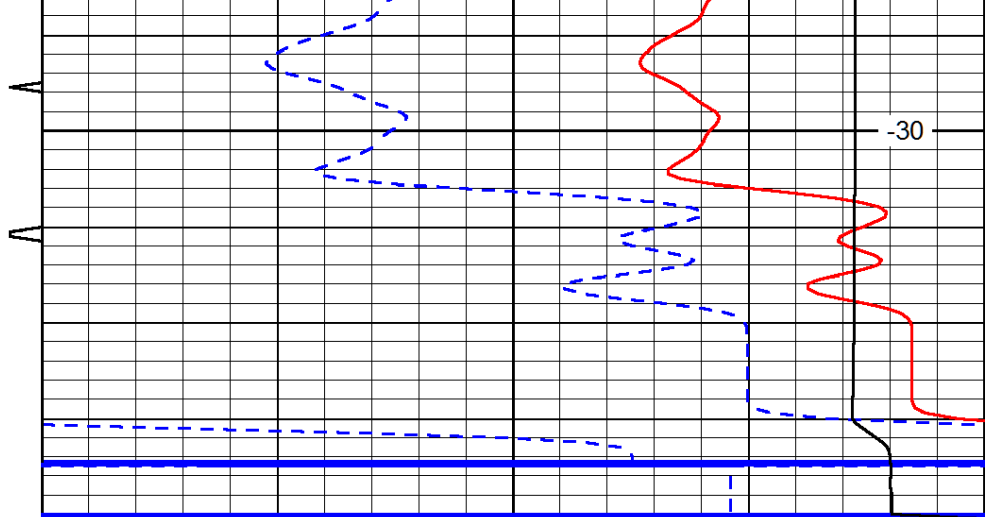








4850



-30

| | | | | | | |
|-----|------------------|-----|------------|-------|--------------------------------|-----|
| 0 | Gamma Ray (GAPI) | 150 | Sonic Int | 140 | Delta Time (usec/ft) (usec/ft) | 40 |
| 150 | Gamma Ray (GAPI) | 300 | 5 (msec) 0 | 30 | Sonic Porosity (pu) | -10 |
| 6 | dCAL (in) | 16 | | 15000 | LTEN (lb) (lb) | 0 |

LSPD
(ft/min)