



Pioneer Energy Services

Microresistivity Log

API No.	15-191-22,683-00-00		
Company	Energy Investment Partners, LLC		
Well	Turek #1-16		
Field	Wildcat		
County	Sumner	State	Kansas
Location	NW NE SW NW 1590' FNL & 840' FWL		
Sec: 16	Twp: 34S	Rge: 3W	
Permanent Datum	Ground Level	Elevation 1212	Other Services CNL/CDL DIL/BHCS
Log Measured From	Kelly Bushing	10 Ft. Above Perm. Datum	
Drilling Measured From	Kelly Bushing		
Date	5/8/2013		
Run Number	Two		
Depth Driller	4880		
Depth Logger	4880		
Bottom Logged Interval	4879		
Top Log Interval	2600		
Casing Driller	8.625 @ 275		
Casing Logger	274		
Bit Size	7.875		
Type Fluid in Hole	Chemical		
Salinity, ppm CL	6800		
Density / Viscosity	9.2	52	
pH / Fluid Loss	9.5	12.8	
Source of Sample	Flowline		
Rm @ Meas. Temp	0.20 @ 70		
Rmf @ Meas. Temp	0.15 @ 70		
Rmc @ Meas. Temp	0.27 @ 70		
Source of Rmf / Rmc	Charts		
Rm @ BHT	0.11 @ 125		
Operating Rig Time	6 Hours		
Max Rec. Temp. F	125		
Equipment Number	15		
Location	Hays		
Recorded By	D. Kerr		
Witnessed By	Denny Allison		

<<< Fold Here >>>

All interpretations are opinions based on inferences from electrical or other measurements and we cannot and do not guarantee the accuracy or correctness of any interpretation, and we shall not, except in the case of gross or willful negligence on our part, be liable or responsible for any loss, costs, damages, or expenses incurred or sustained by anyone resulting from any interpretation made by any of our officers, agents or employees. These interpretations are also subject to our general terms and conditions set out in our current Price Schedule.

Comments

Thank you for using Log-Tech, Inc.
(785) 625-3858

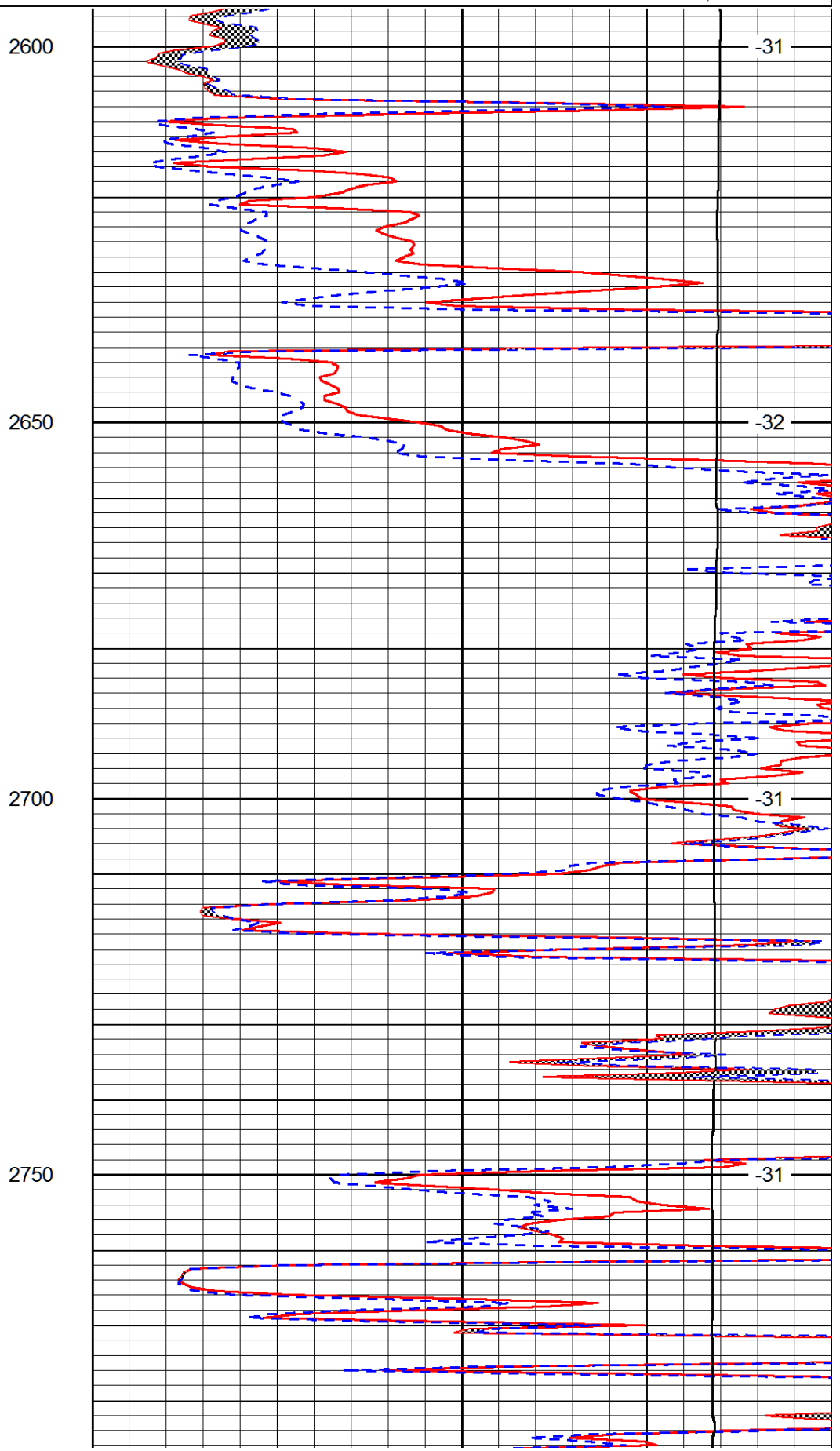
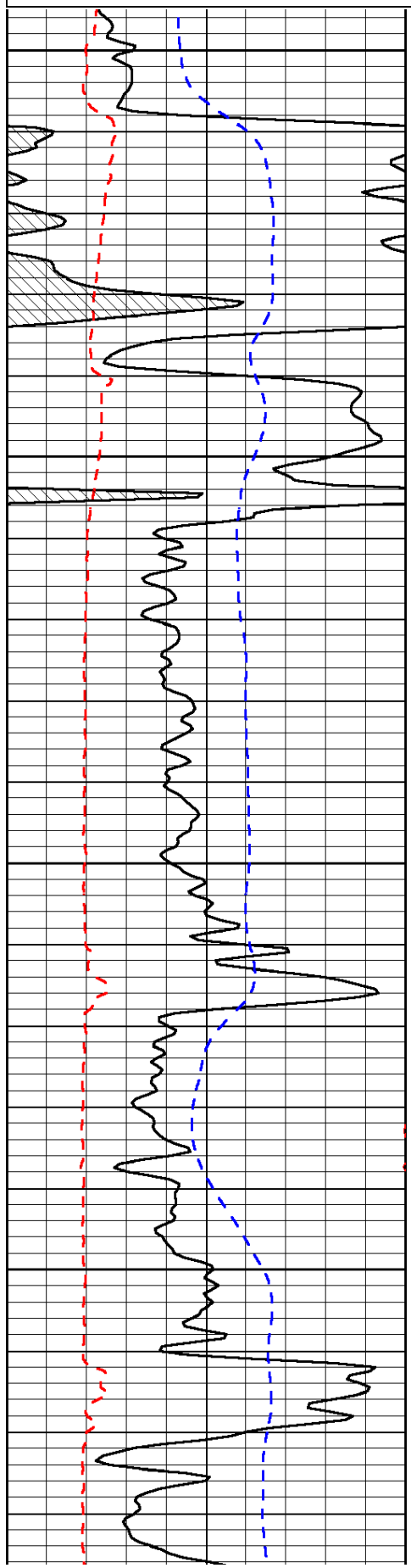
Caldwell KS, 5 North to 130 RD,
3 West, 1/4 South, East Into

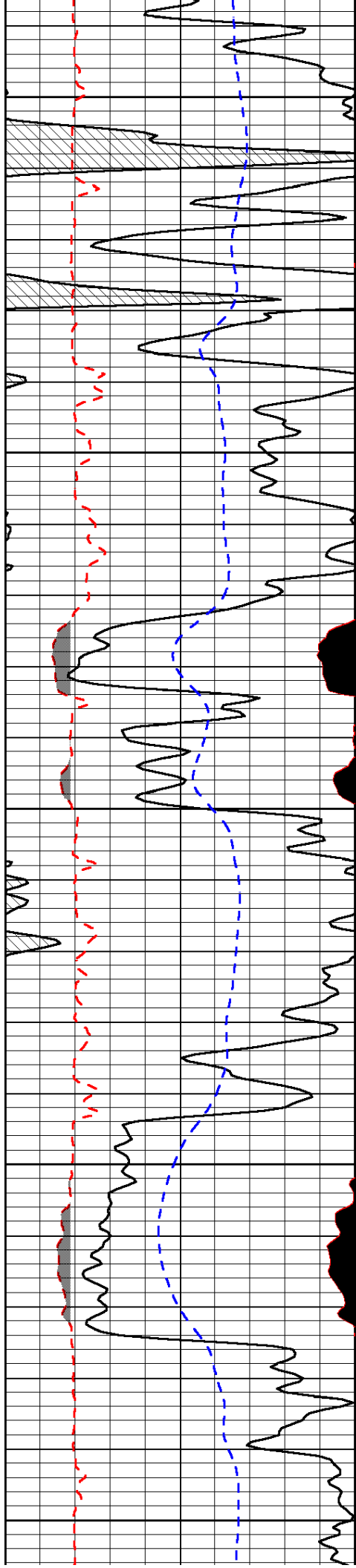
Database File: energyinvest_turek_1_16hd.db
 Dataset Pathname: DIL/engstk
 Presentation Format: micro
 Dataset Creation: Wed May 08 21:42:20 2013
 Charted by: Depth in Feet scaled 1:240

0	Gamma Ray (GAPI)	150
6	MCAL (in)	16
2.875	Mud Cake (in)	7.875
-200	SP (mV)	0

0	Micro Inverse 1 X 1 (Ohm-m)	40
0	Micro Normal 2" (Ohm-m)	40
10000	Line Weight (lb)	0

LSPD
(ft/min)





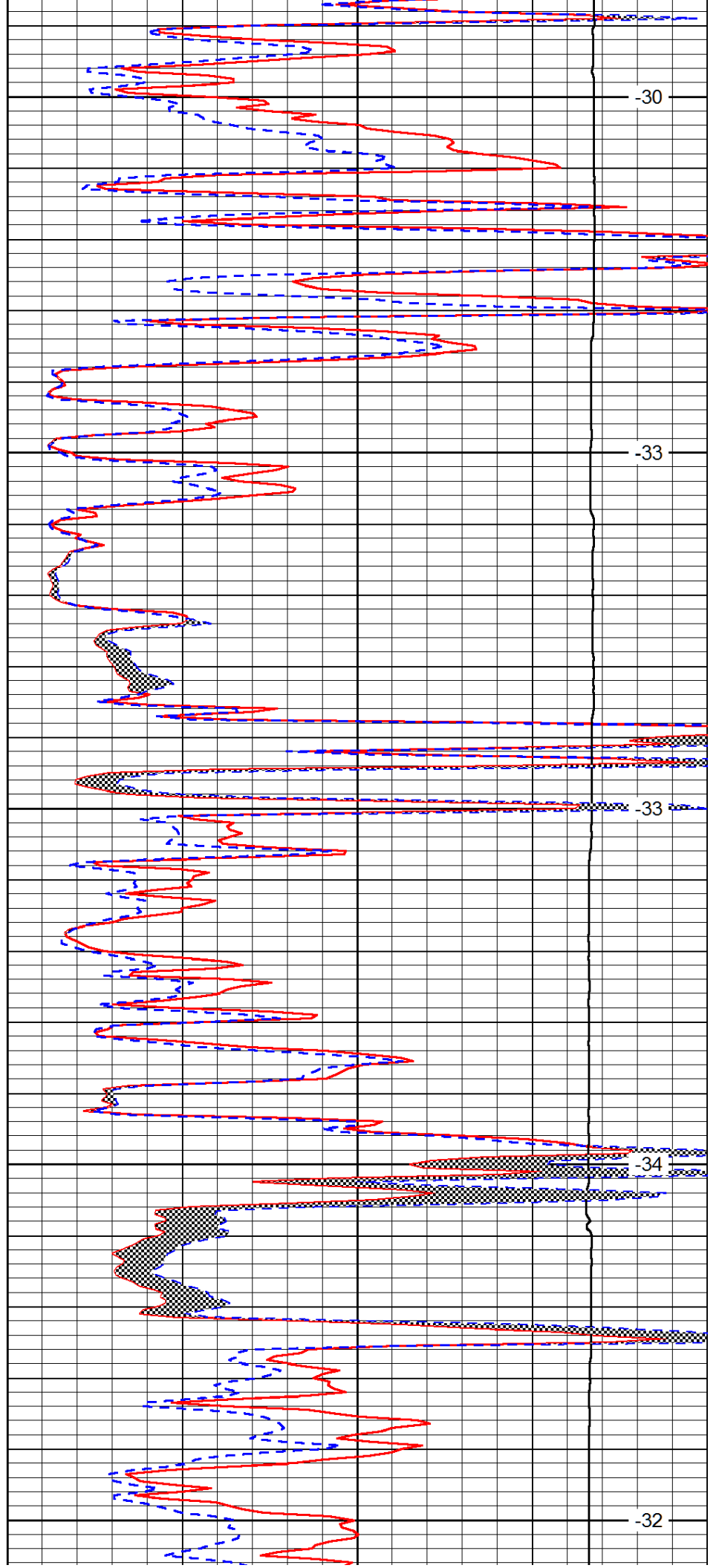
2800

2850

2900

2950

3000



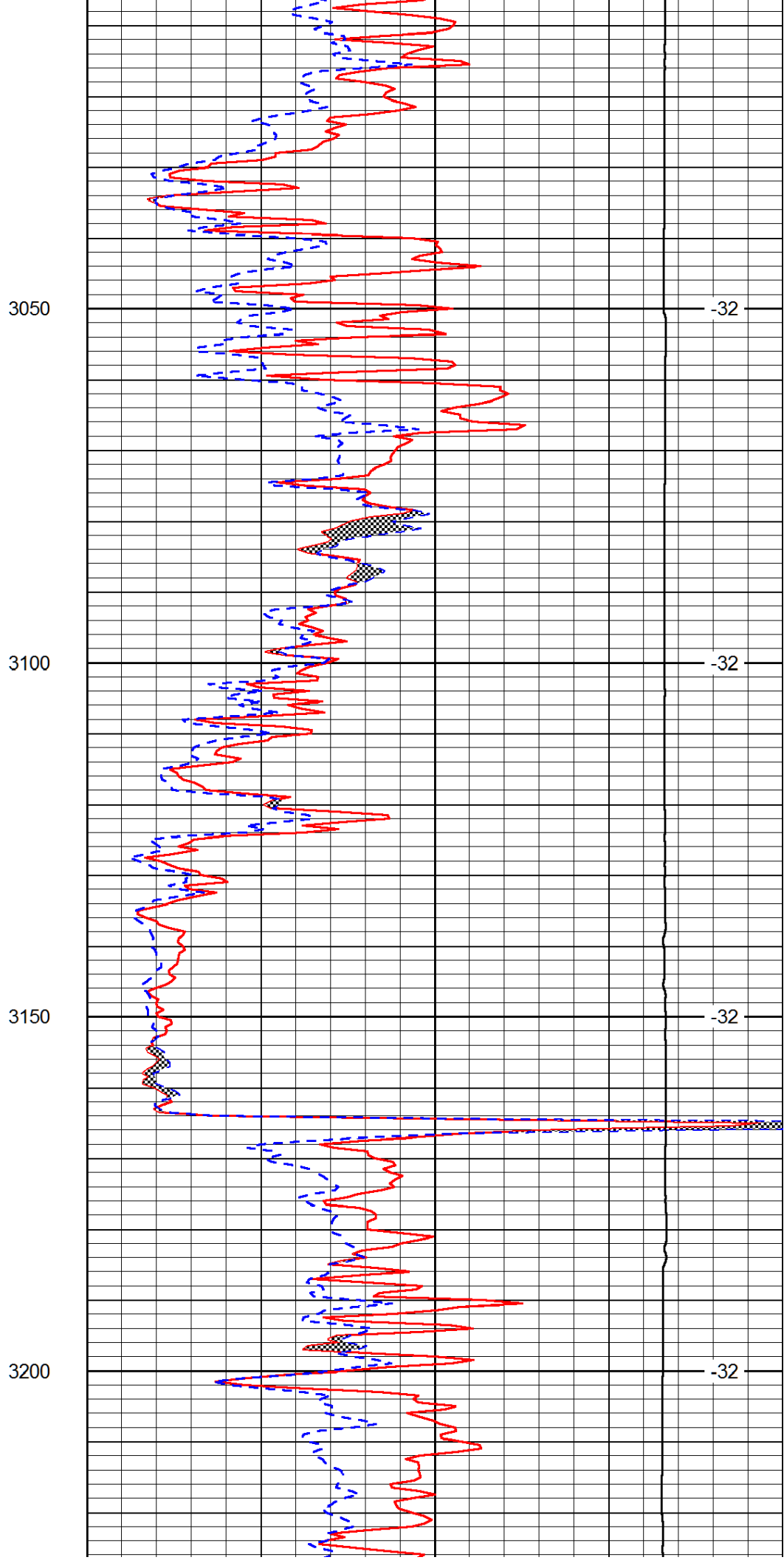
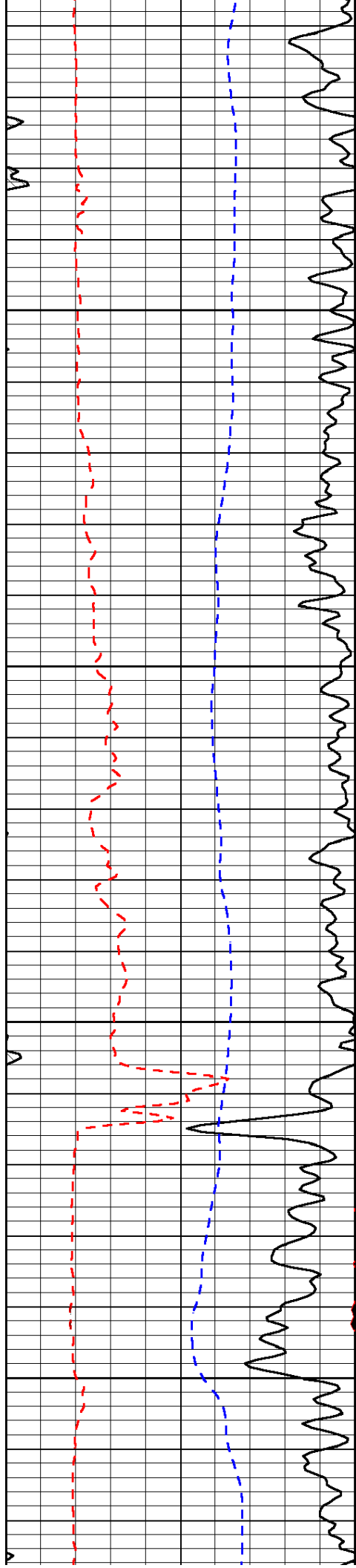
-30

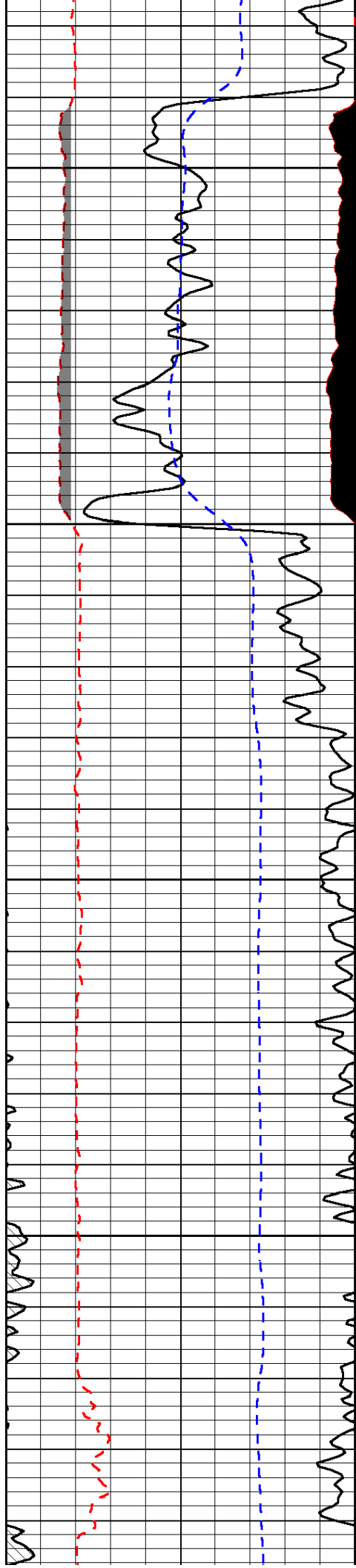
-33

-33

-34

-32



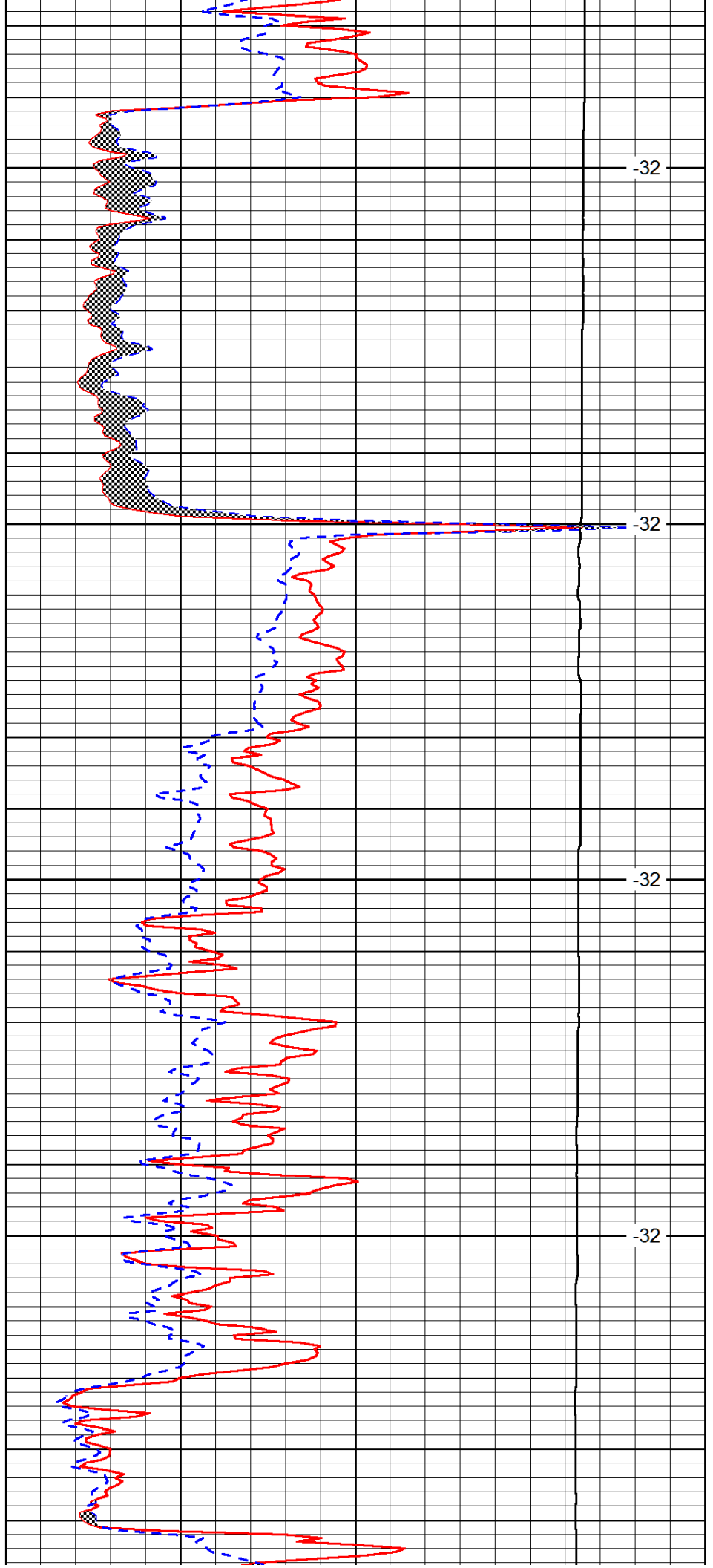


3250

3300

3350

3400

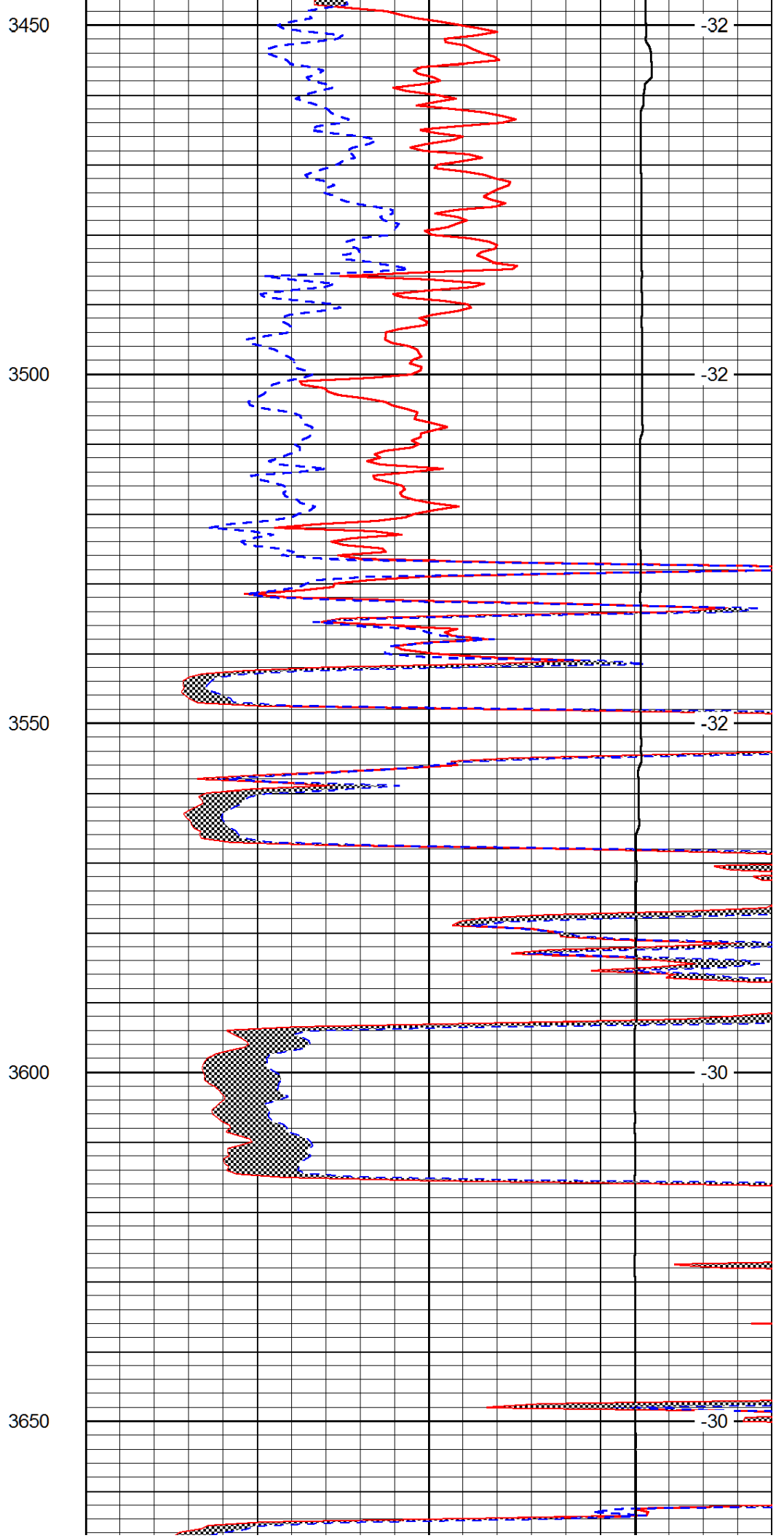
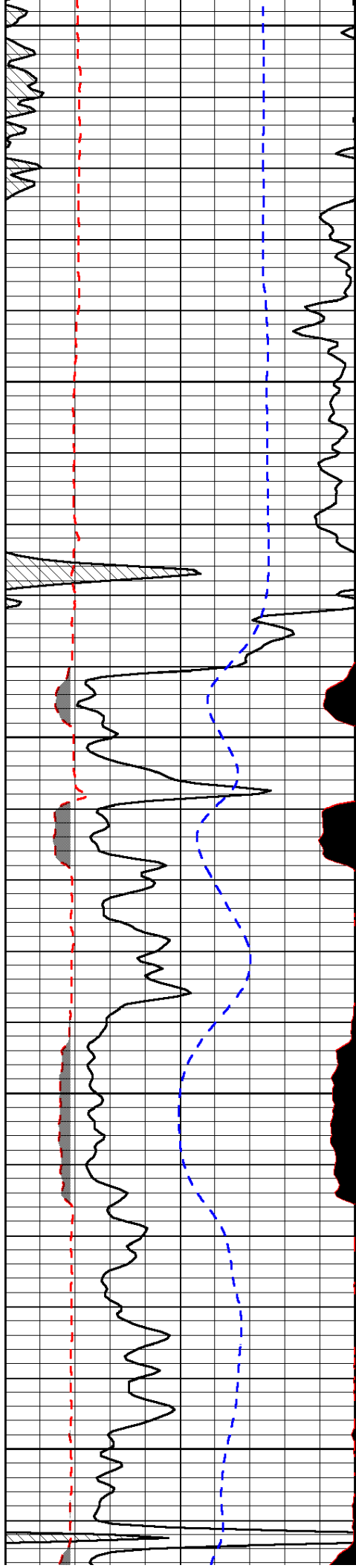


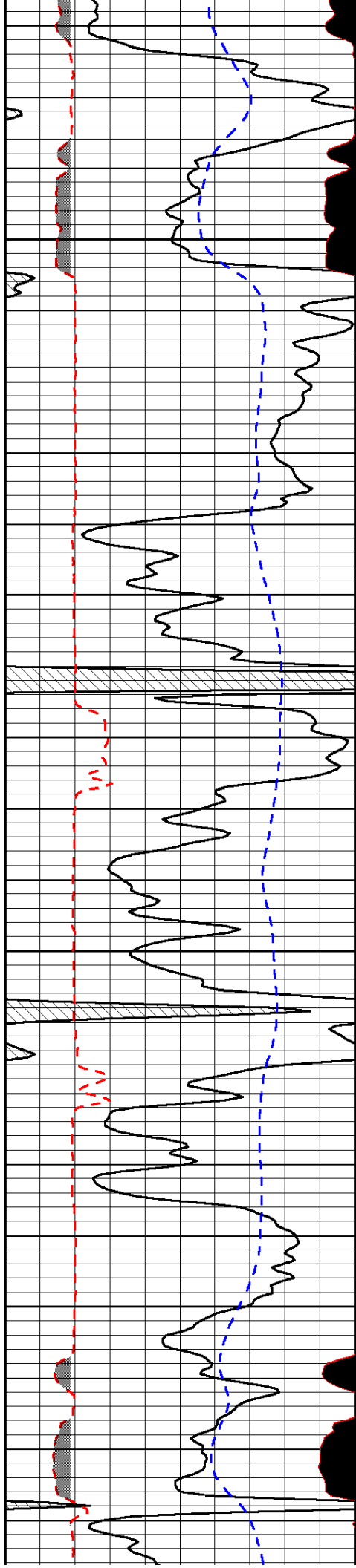
-32

-32

-32

-32



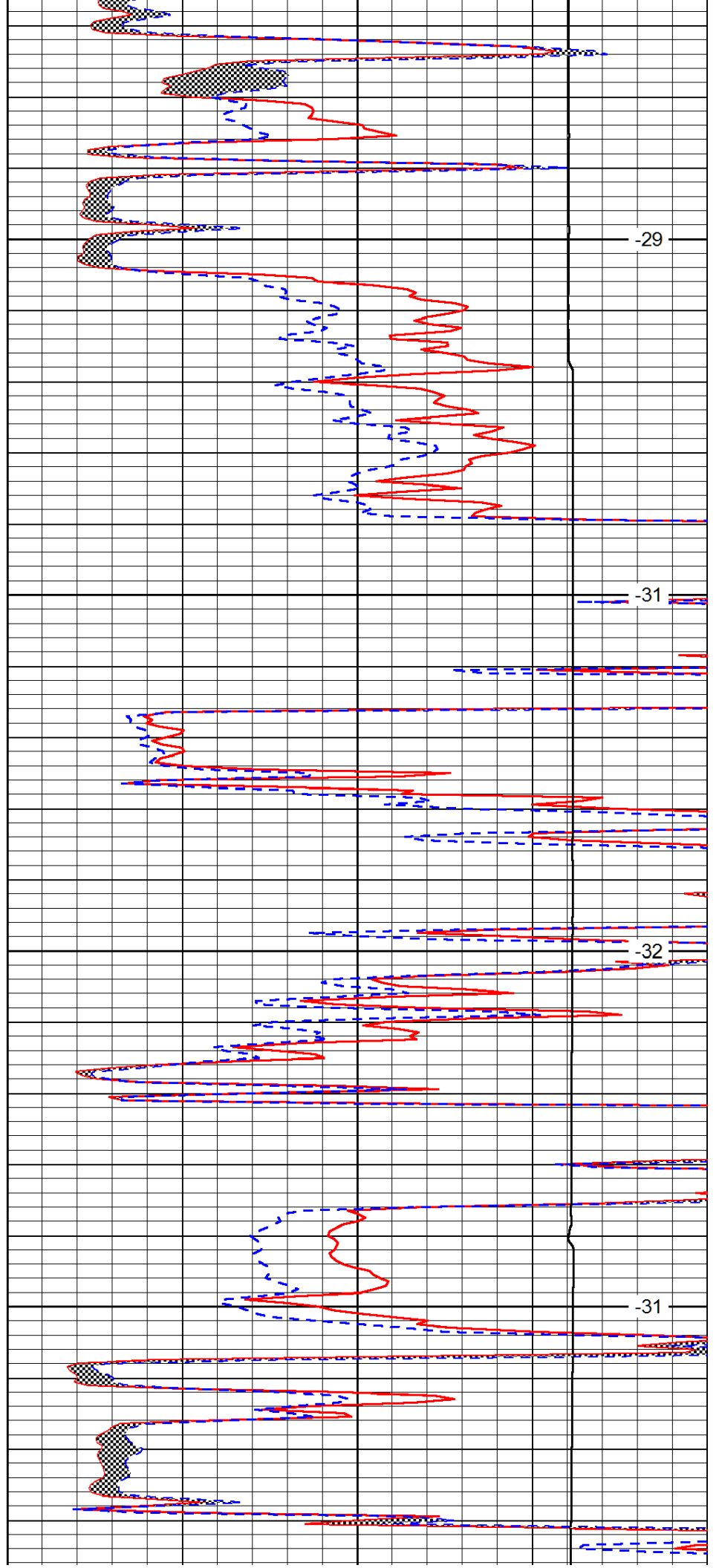


3700

3750

3800

3850

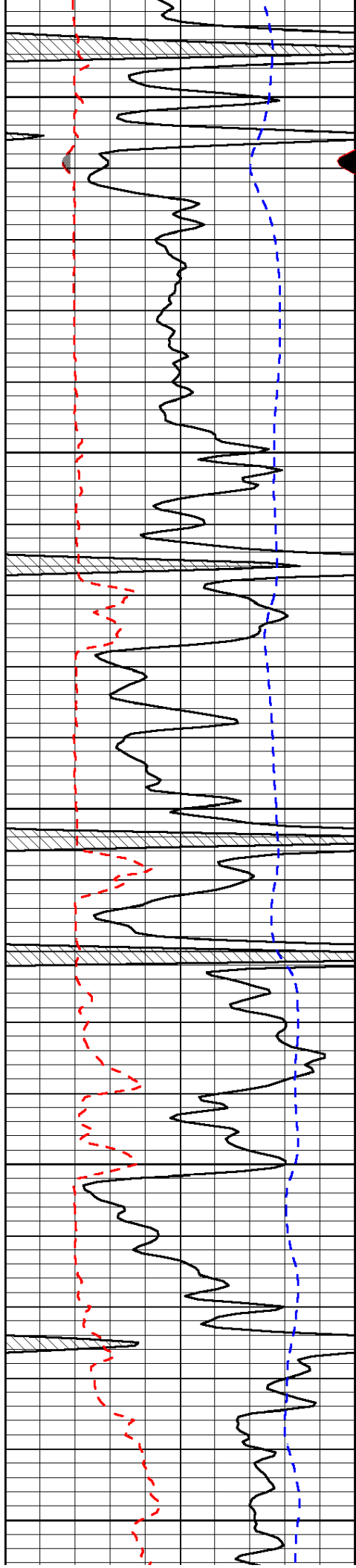


-29

-31

-32

-31



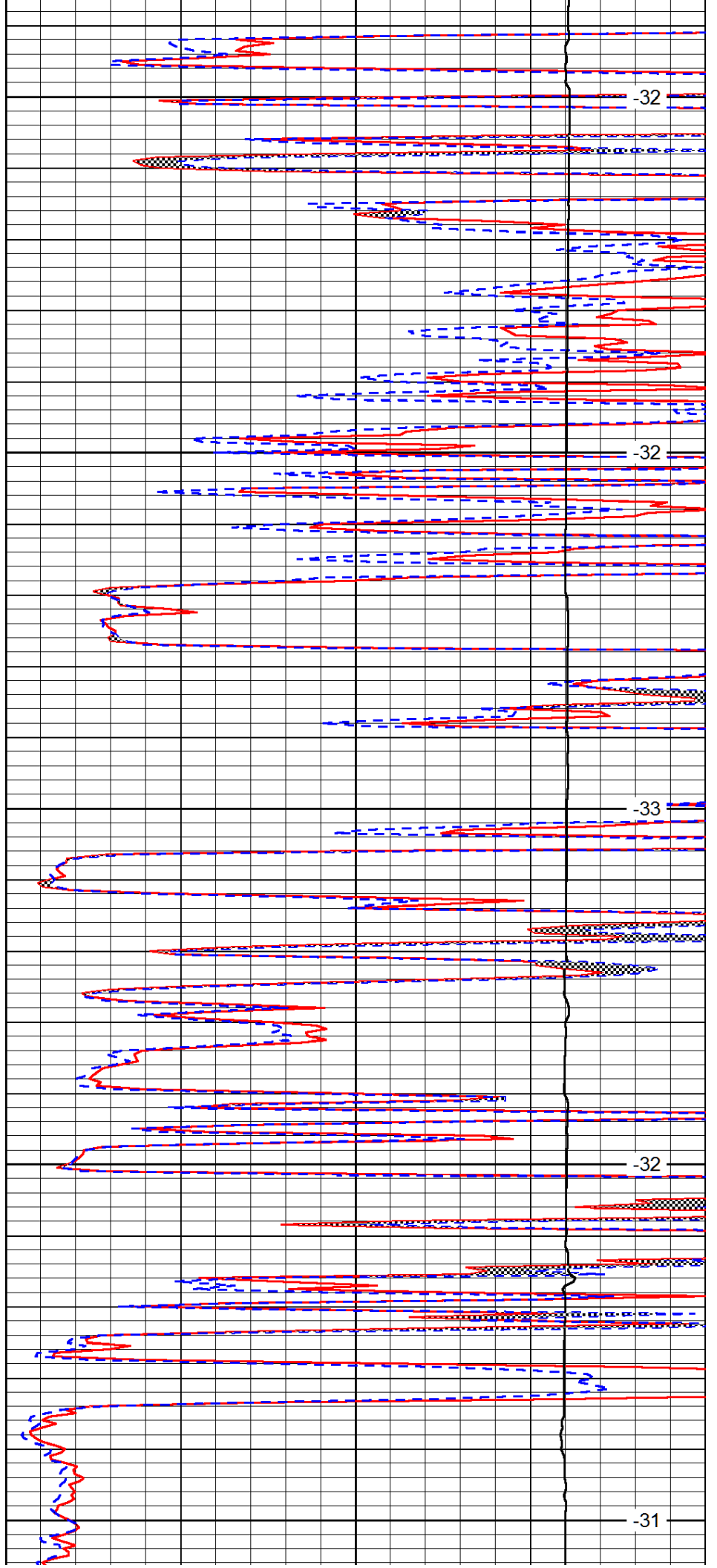
3900

3950

4000

4050

4100



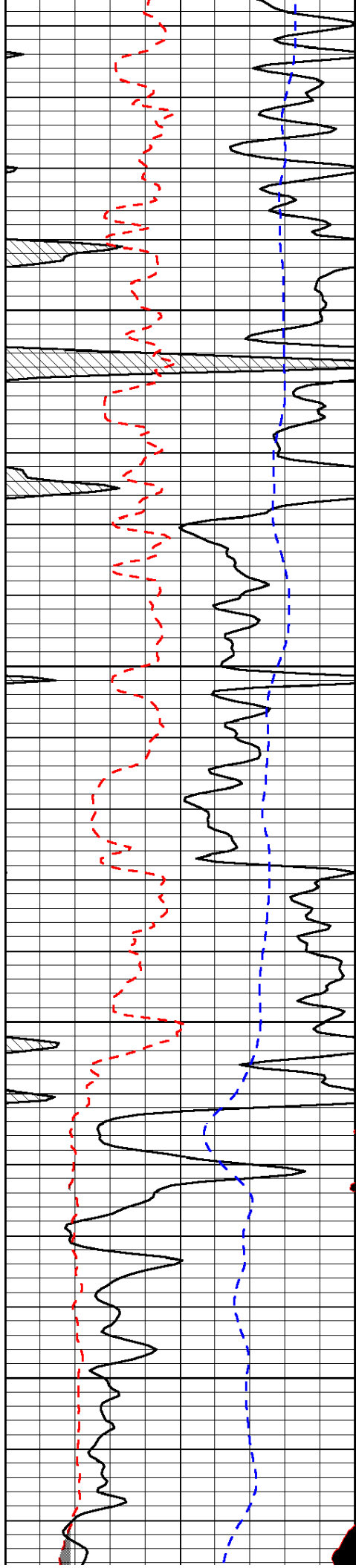
-32

-32

-33

-32

-31



4150

-31

4200

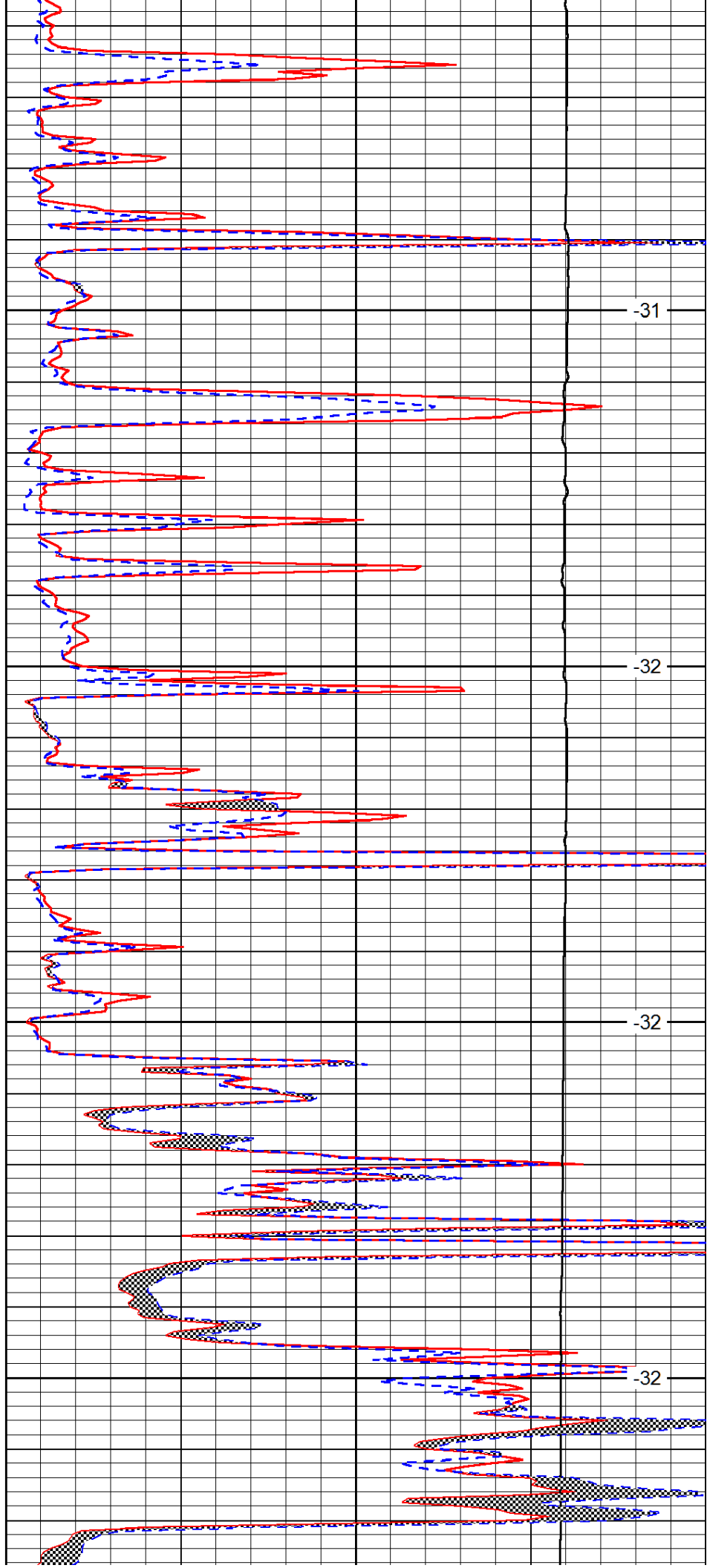
-32

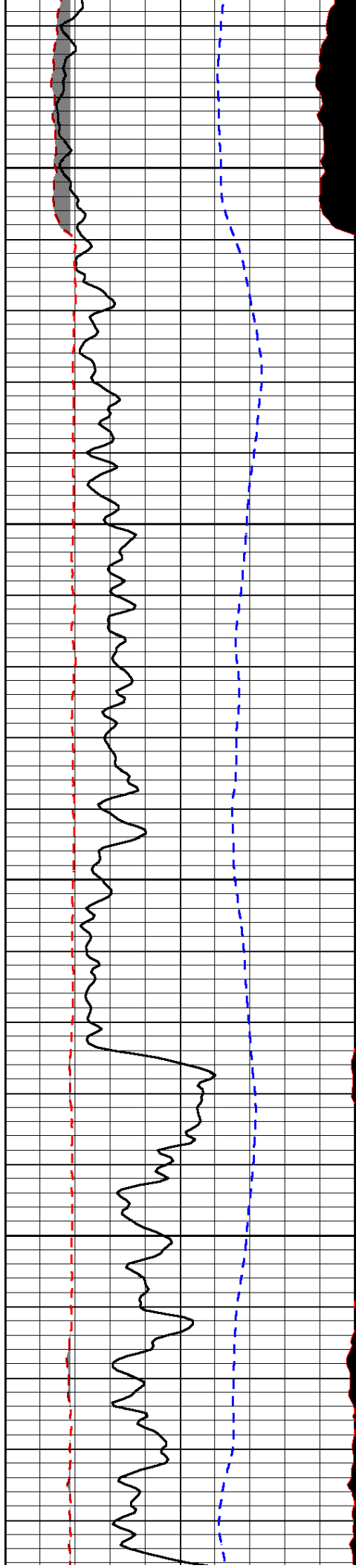
4250

-32

4300

-32



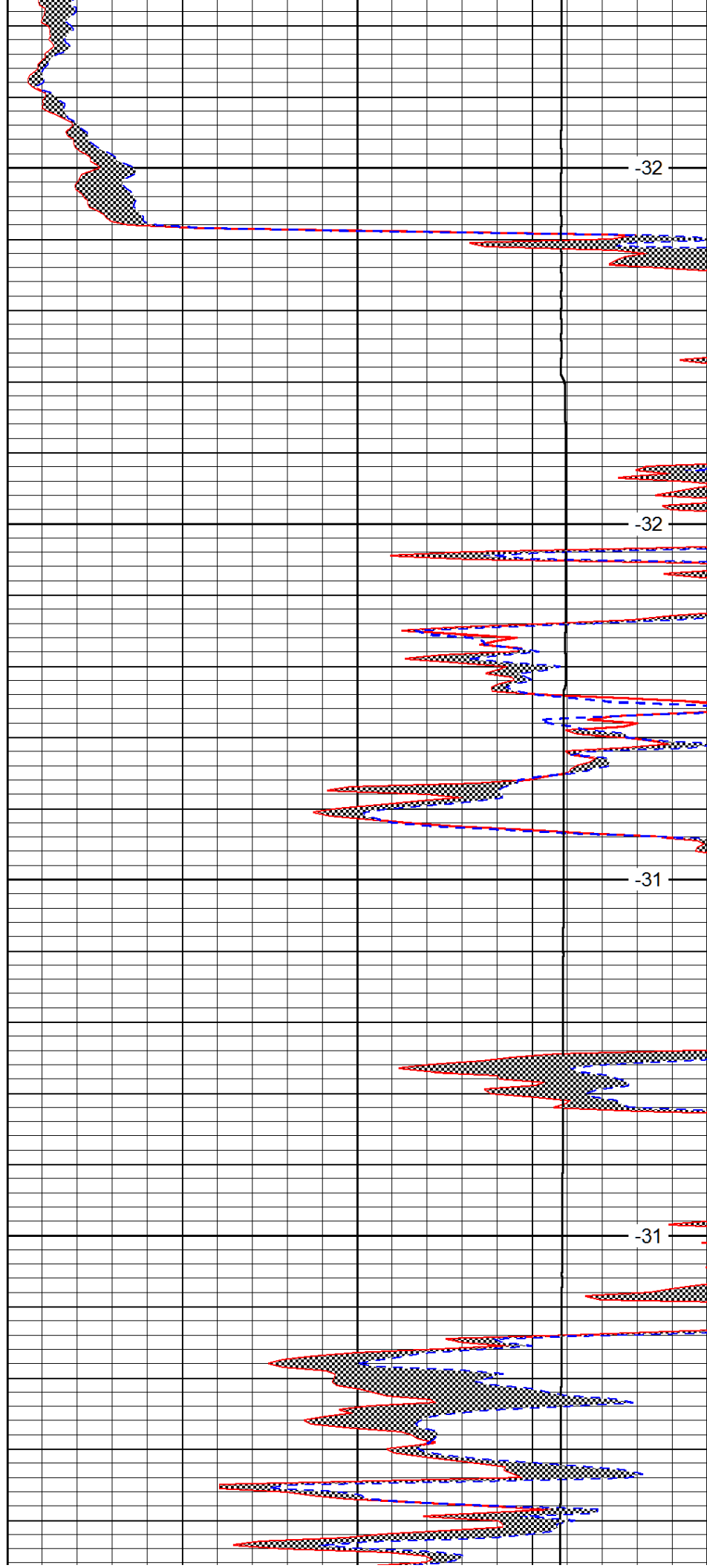


4350

4400

4450

4500

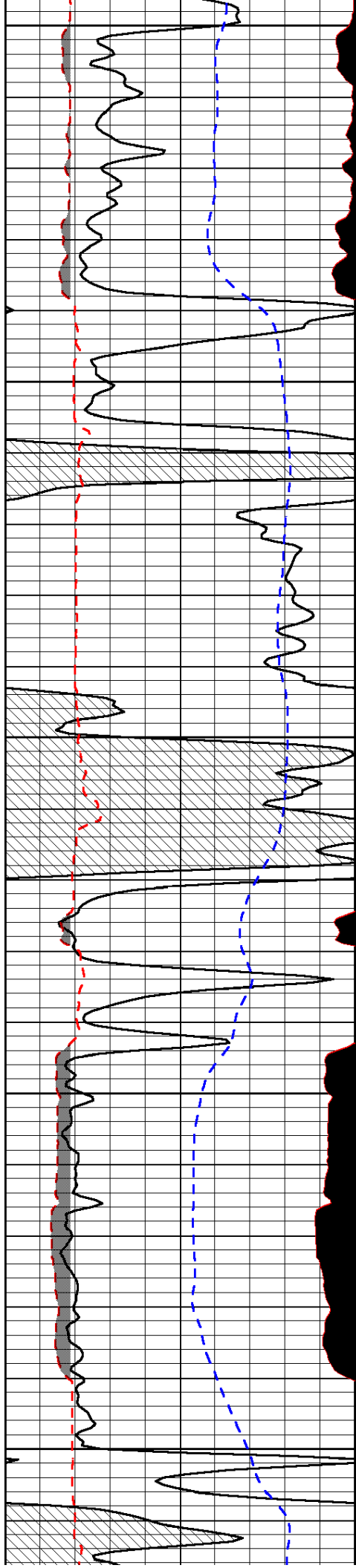


-32

-32

-31

-31



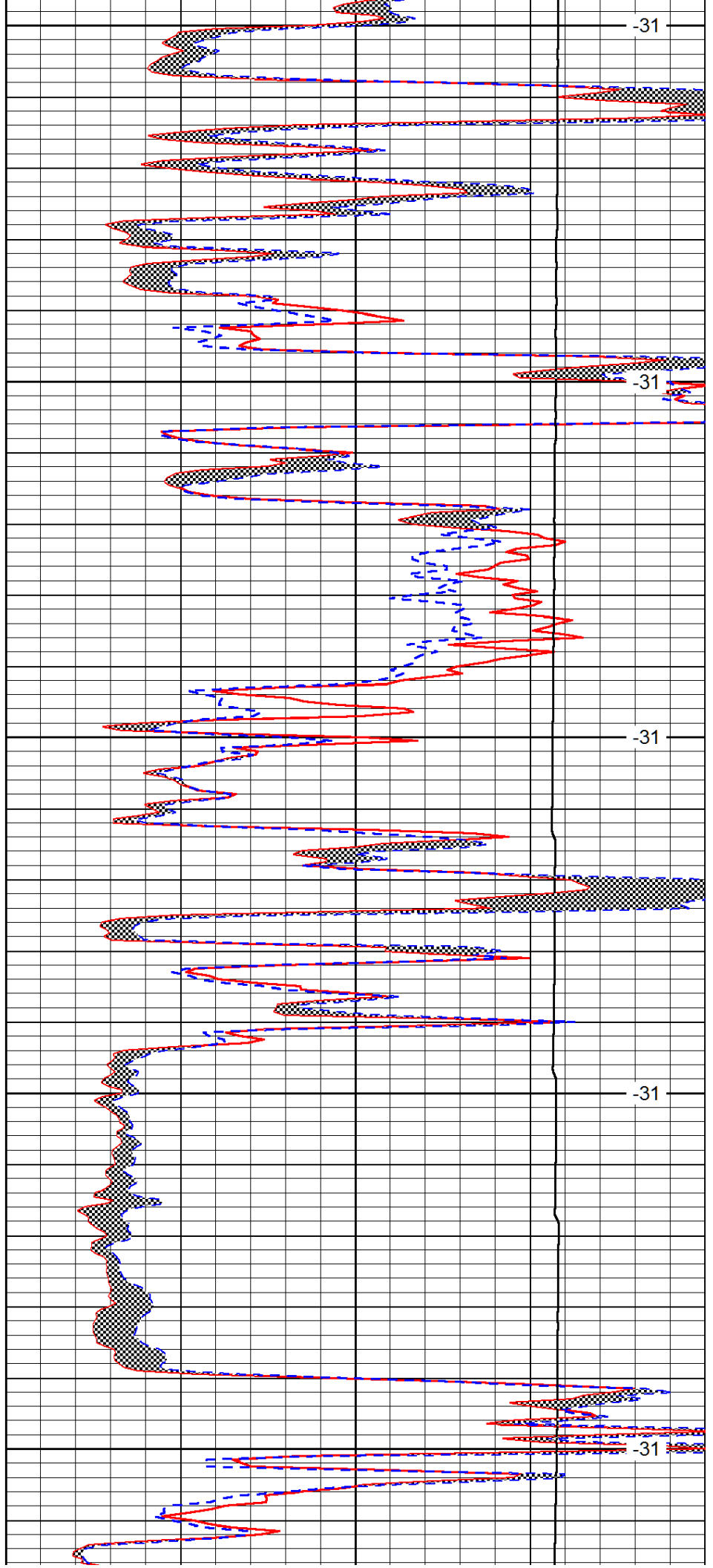
4550

4600

4650

4700

4750



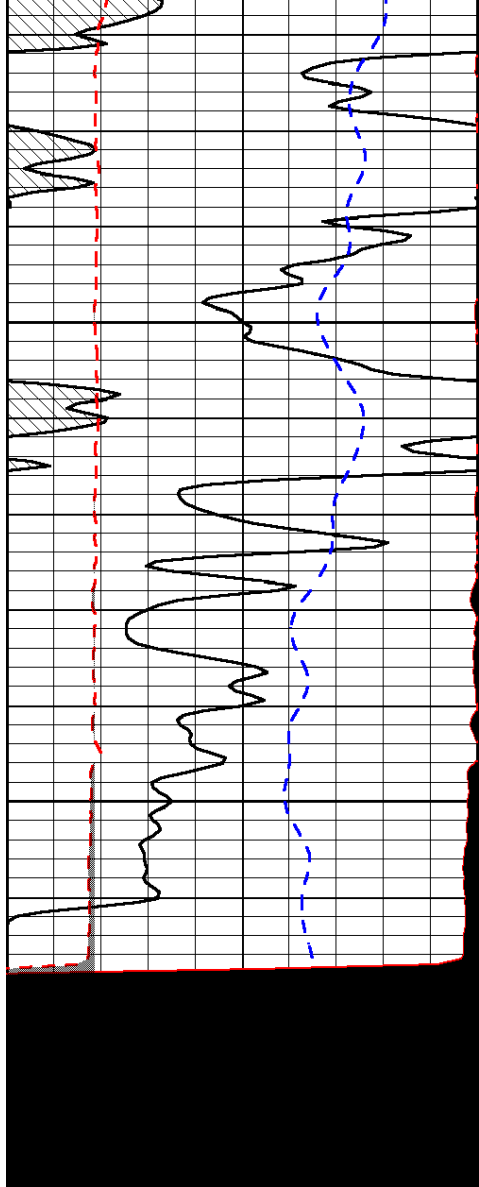
-31

-31

-31

-31

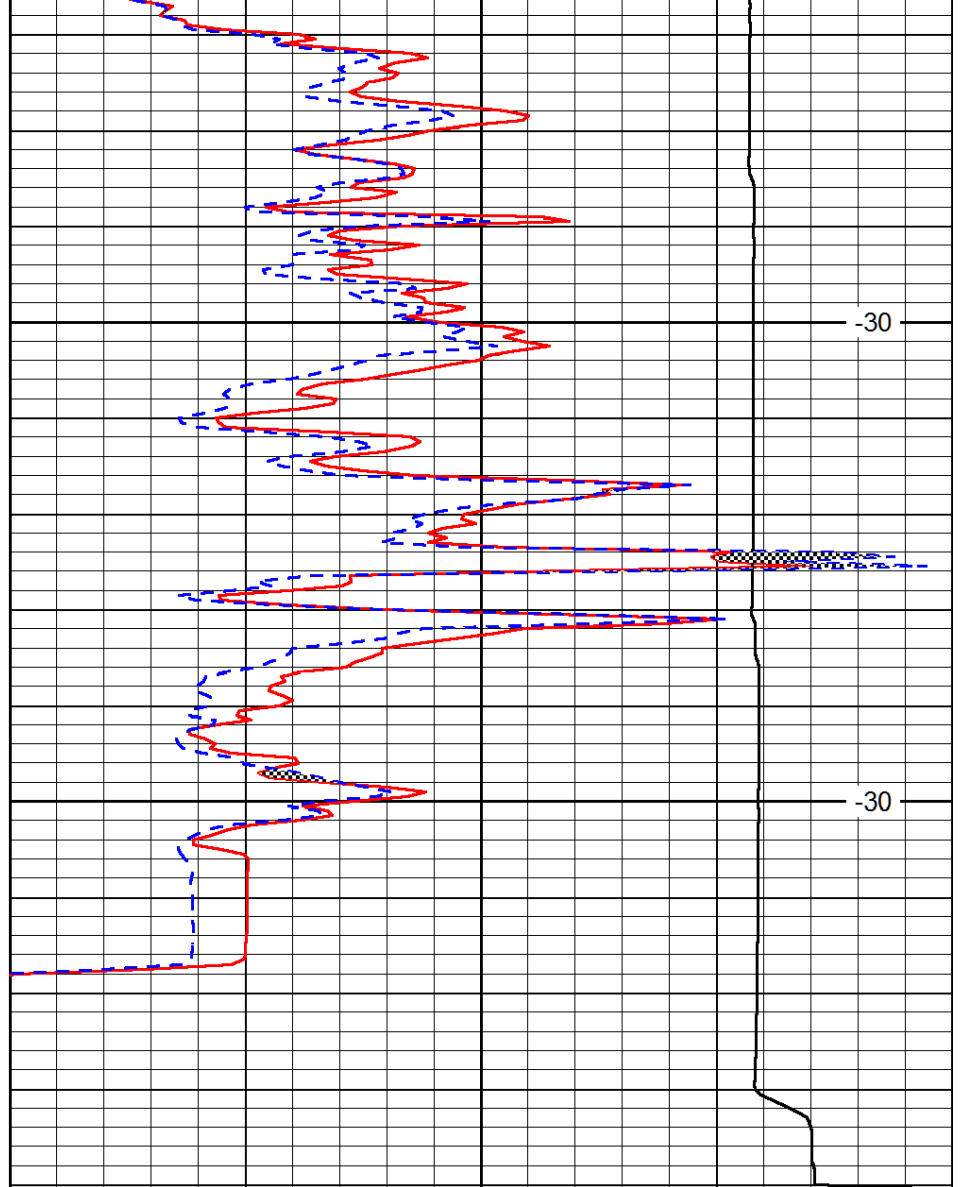
-31



0	Gamma Ray (GAPI)	150
6	MCAL (in)	16
2.875	Mud Cake (in)	7.875
-200	SP (mV)	0

4800

4850



0	Micro Inverse 1 X 1 (Ohm-m)	40
0	Micro Normal 2" (Ohm-m)	40
10000	Line Weight (lb)	0

LSPD
(ft/min)