



Microresistivity Log

DIGITAL LOG (785) 625-3858

API No.	15-051-26,209-00-00		
Company	Murfin Drilling Company, Inc.		
Well	Stadelman Unit No. 1-3		
Field	Stadelman		
County	Ellis	State	Kansas
Location	1100' FSL & 370' FWL		
Sec: 3	Twp: 14 S	Rge: 19 W	
Permanent Datum	Ground Level	Elevation 2215	
Log Measured From	Kelly Bushing	5 Ft. Above Perm. Datum	
Drilling Measured From	Kelly Bushing		
		Other Services CNL/CDL DIL/BHCS	
		Elevation K.B. 2220 D.F. 2215 G.L. 2215	

Date	10/29/2011	
Run Number	Two	
Depth Driller	3965	
Depth Logger	3968	
Bottom Logged Interval	3967	
Top Log Interval	3100	
Casing Driller	8.625 @ 220	
Casing Logger	220	
Bit Size	7.875	
Type Fluid in Hole	Chemical	
Salinity, ppm CL	5300	
Density / Viscosity	9.2	54
pH / Fluid Loss	10.5	6.8
Source of Sample	Flowline	
Rm @ Meas. Temp	.65 @	66
Rmf @ Meas. Temp	.48 @	66
Rmc @ Meas. Temp	.87 @	66
Source of Rmf / Rmc	Charts	
Rm @ BHT	.36 @	118
Operating Rig Time	5 Hours	
Max Rec. Temp. F	118	
Equipment Number	91	
Location	Hays	
Recorded By	D.Kerr	
Witnessed By	Paul Gunzelman	

<<< Fold Here >>>

All interpretations are opinions based on inferences from electrical or other measurements and we cannot and do not guarantee the accuracy or correctness of any interpretation, and we shall not, except in the case of gross or willful negligence on our part, be liable or responsible for any loss, costs, damages, or expenses incurred or sustained by anyone resulting from any interpretation made by any of our officers, agents or employees. These interpretations are also subject to our general terms and conditions set out in our current Price Schedule.

Comments

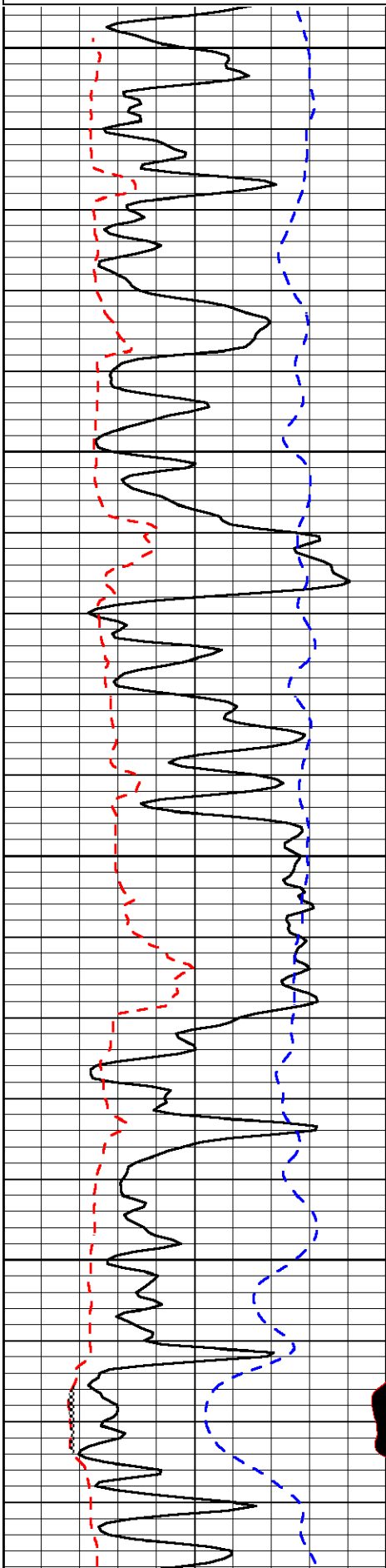
Thank you for using Log-Tech, Inc.
(785) 625-3858

Hays KS,
Yocemento and Golf Course RD,
1/2 East, NorthEast Into

Database File: murfin_stadelman_102911hd.db
 Dataset Pathname: DIL/mfrnstk
 Presentation Format: micro
 Dataset Creation: Sat Oct 29 10:36:49 2011
 Charted by: Depth in Feet scaled 1:240

0	Gamma Ray	150
6	MCAL	16
2.875	Mud Cake	7.875
-200	SP	0

0	Micro Inverse 1 X 1	40
0	Micro Normal 2"	40
10000	Line Weight	0
		LSPD

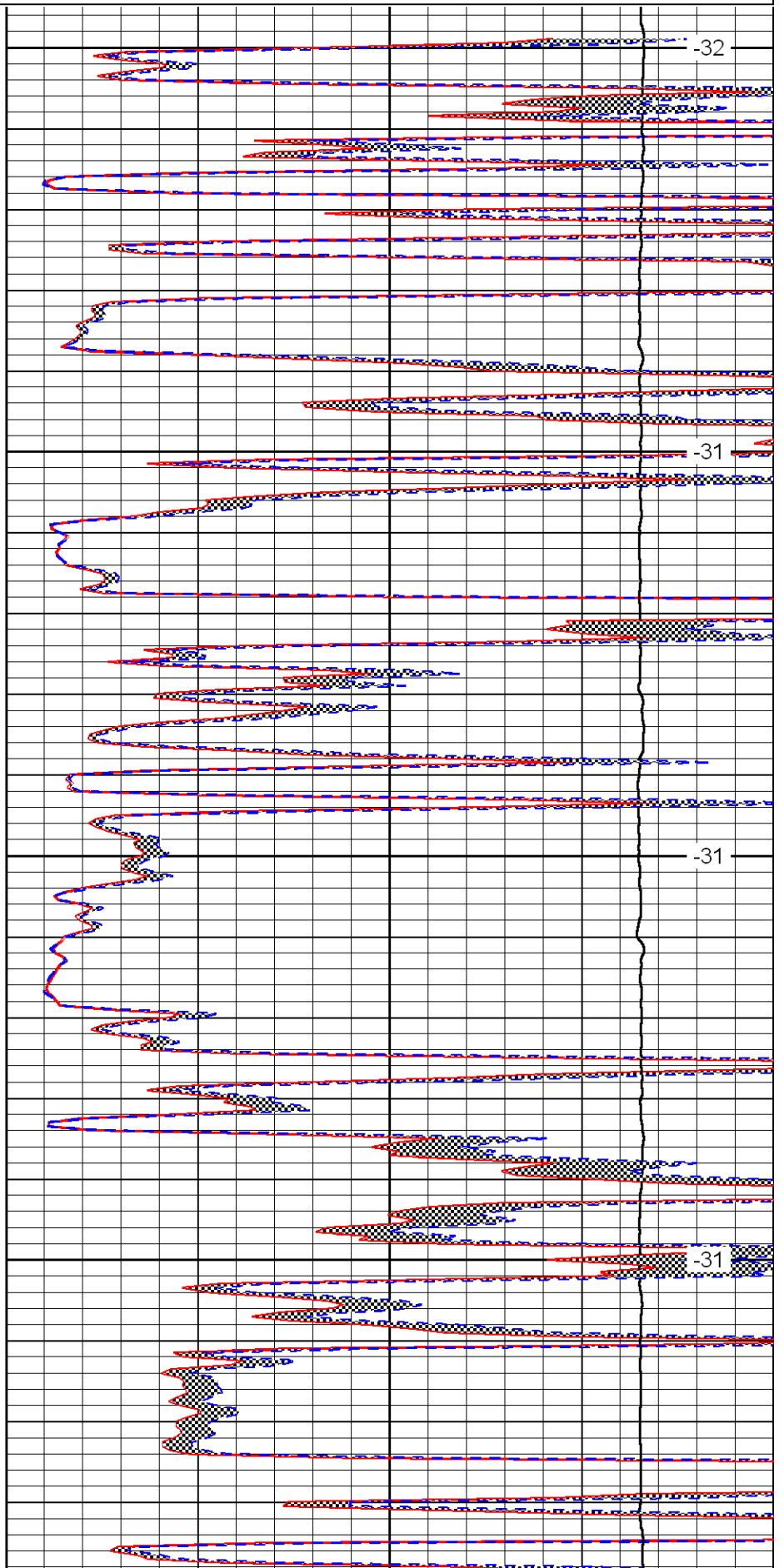


3100

3150

3200

3250

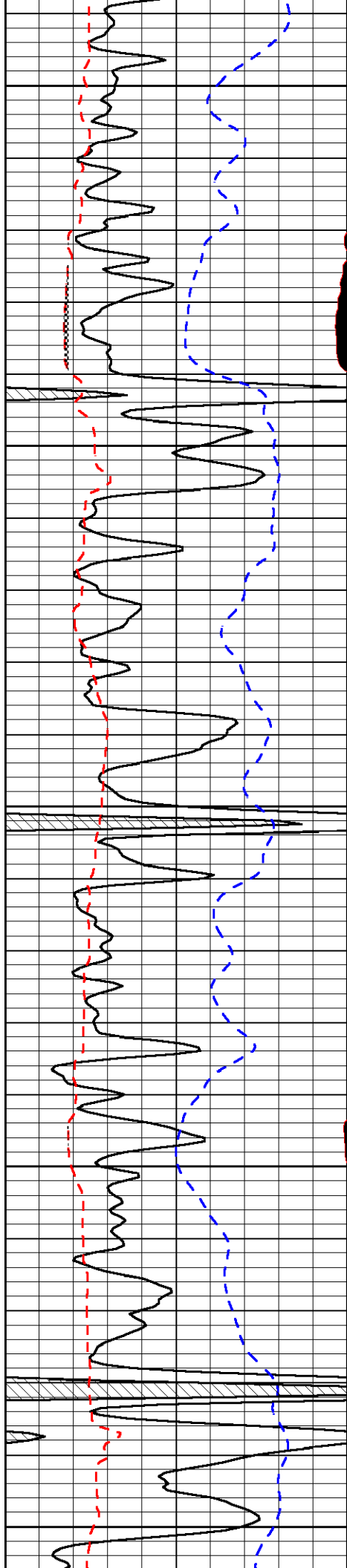


-32

-31

-31

-31



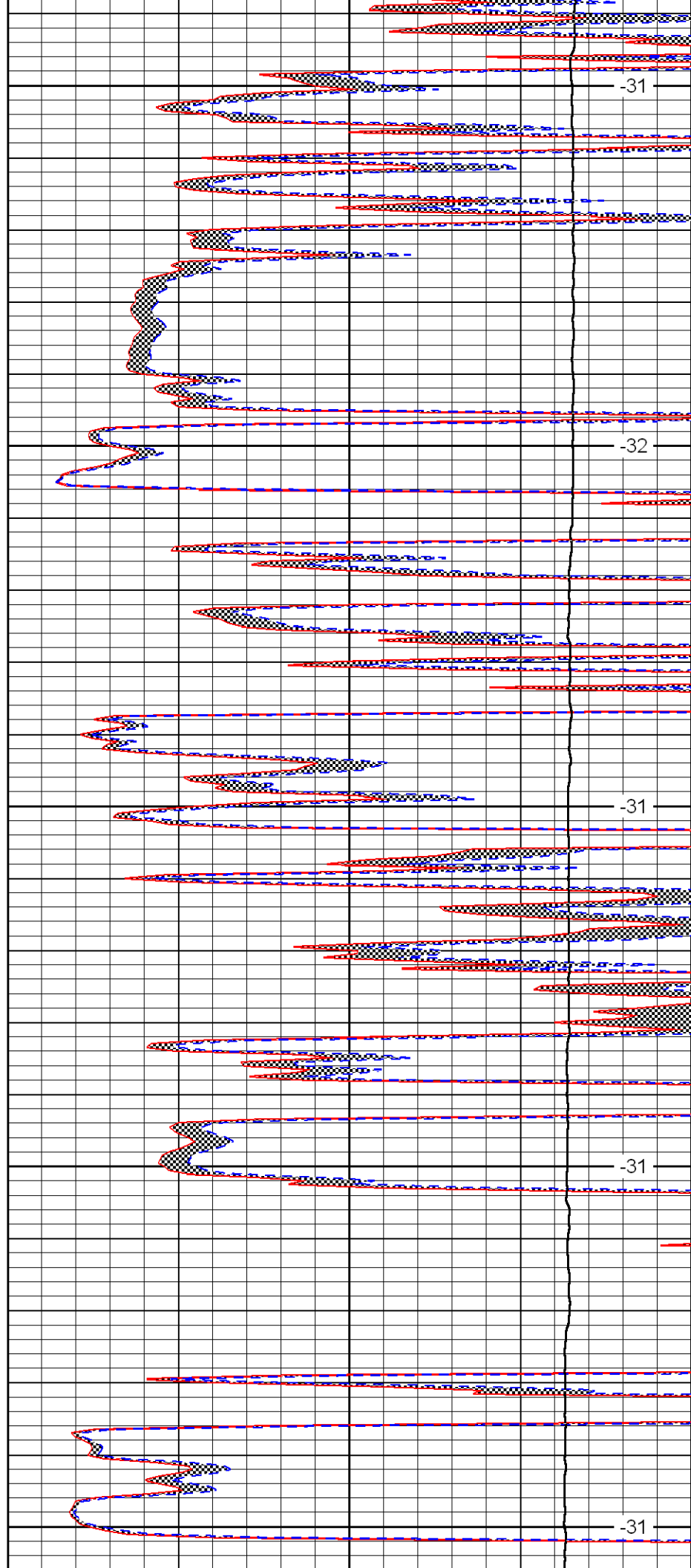
3300

3350

3400

3450

3500



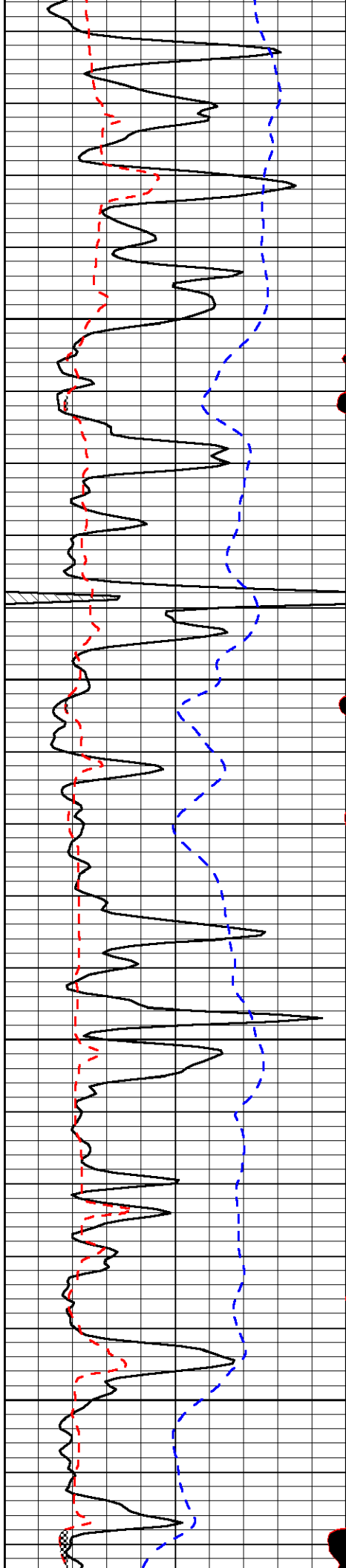
-31

-32

-31

-31

-31

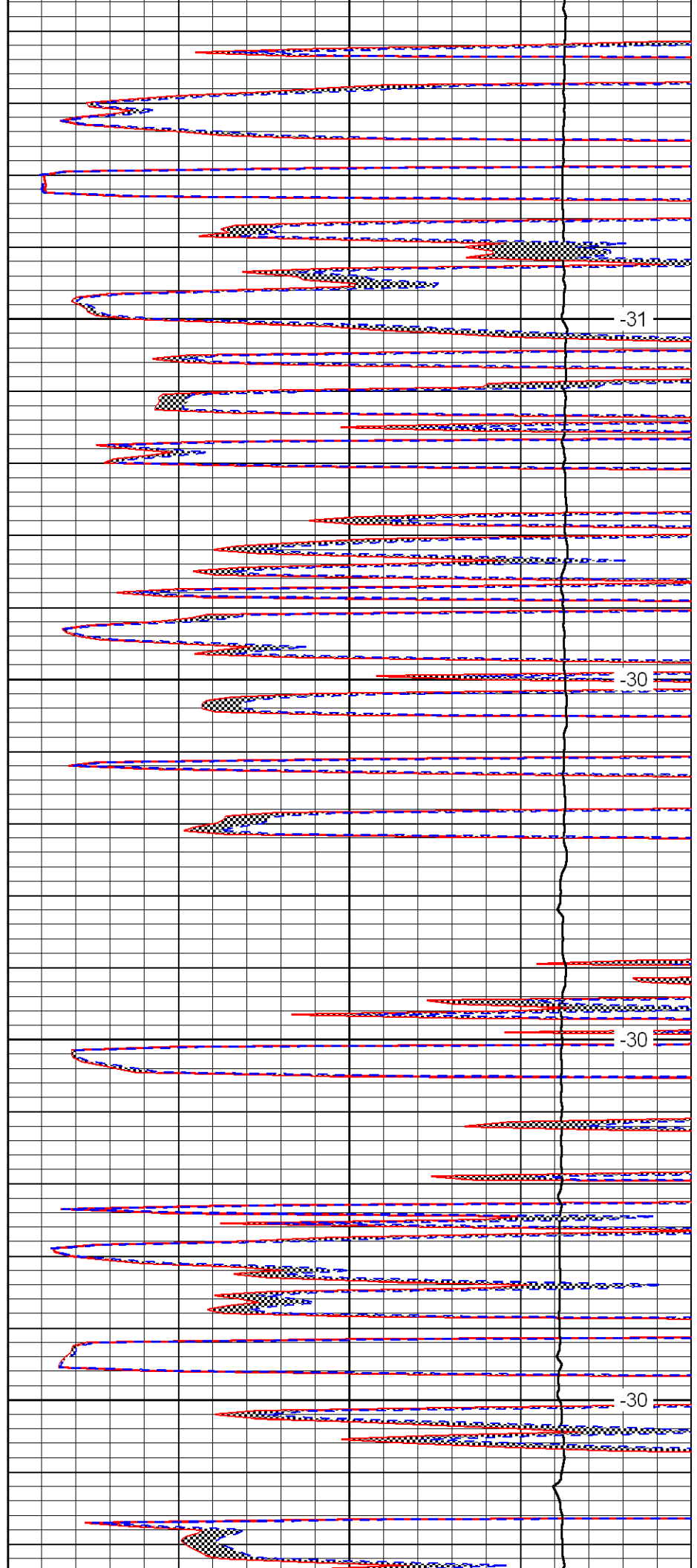


3550

3600

3650

3700

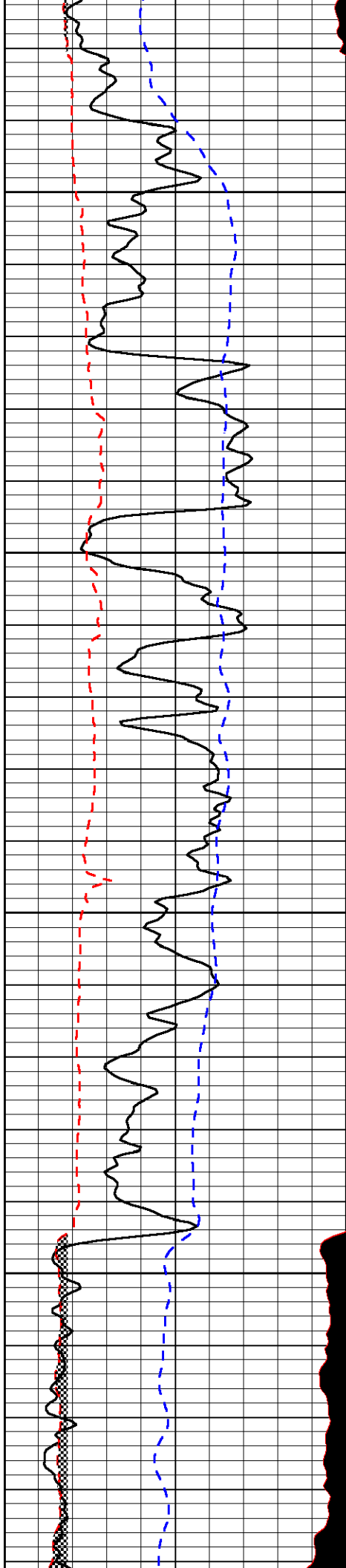


-31

-30

-30

-30

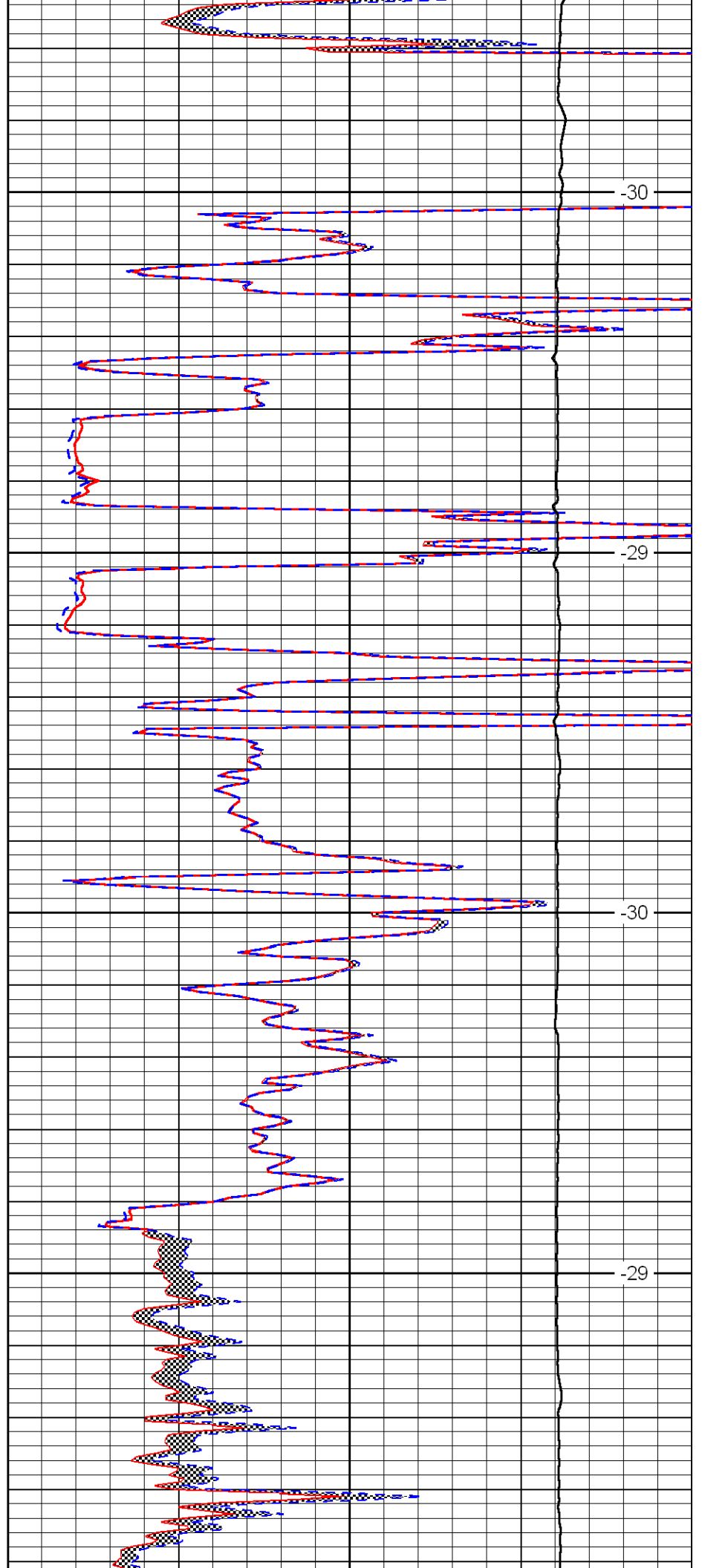


3750

3800

3850

3900

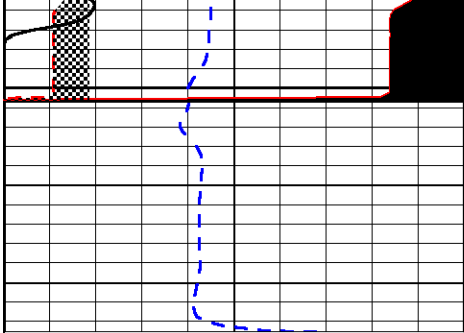


-30

-29

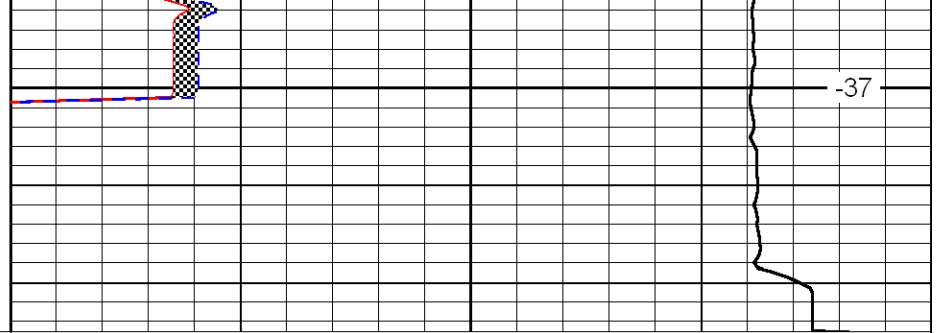
-30

-29



0	Gamma Ray	150
6	MCAL	16
2.875	Mud Cake	7.875
-200	SP	0

3950



0	Micro Inverse 1 X 1	40
0	Micro Normal 2''	40
10000	Line Weight	0

-37

LSPD