



**Borehole Compensated
Sonic Log**

DIGITAL LOG (785) 625-3858

API No. 15-051-26,209-00-00	Company Murfin Drilling Company, Inc.	Location 1100' FSL & 370' FWL	Other Services CNL/CDL MEL/DIL
	Well Stadelman Unit No. 1-3		
	Field Stadelman		
	County Ellis		
	State Kansas		
	Sec: 3	Twp: 14 S	Rge: 19 W
Permanent Datum Log Measured From Drilling Measured From	Ground Level Kelly Bushing Kelly Bushing	Elevation 2215 5 Ft. Above Perm. Datum	K.B. 2220 D.F. 2215 G.L. 2215

Date	10/29/2011
Run Number	Two
Type Log	BHC Sonic
Depth Driller	3965
Depth Logger	3968
Bottom Logged Interval	3957
Top Logged Interval	200
Type Fluid In Hole	Chemical
Salinity, PPM CL	5300
Density	9.2
Level	Full
Max. Rec. Temp. F	118
Operating Rig Time	5 Hours
Equipment -- Location	91 Hays
Recorded By	D.Kerr
Witnessed By	Paul Gunzelman

Borehole Record				Casing Record			
Run No	Bit	From	To	Size	Wgt. 23#	From	To
One	12.25	00	220	8.625	23#	00	220
Two	7.875	220	TD				

<<< Fold Here >>>

All interpretations are opinions based on inferences from electrical or other measurements and we cannot and do not guarantee the accuracy or correctness of any interpretation, and we shall not, except in the case of gross or willful negligence on our part, be liable or responsible for any loss, costs, damages, or expenses incurred or sustained by anyone resulting from any interpretation made by any of our officers, agents or employees. These interpretations are also subject to our general terms and conditions set out in our current Price Schedule.

Comments

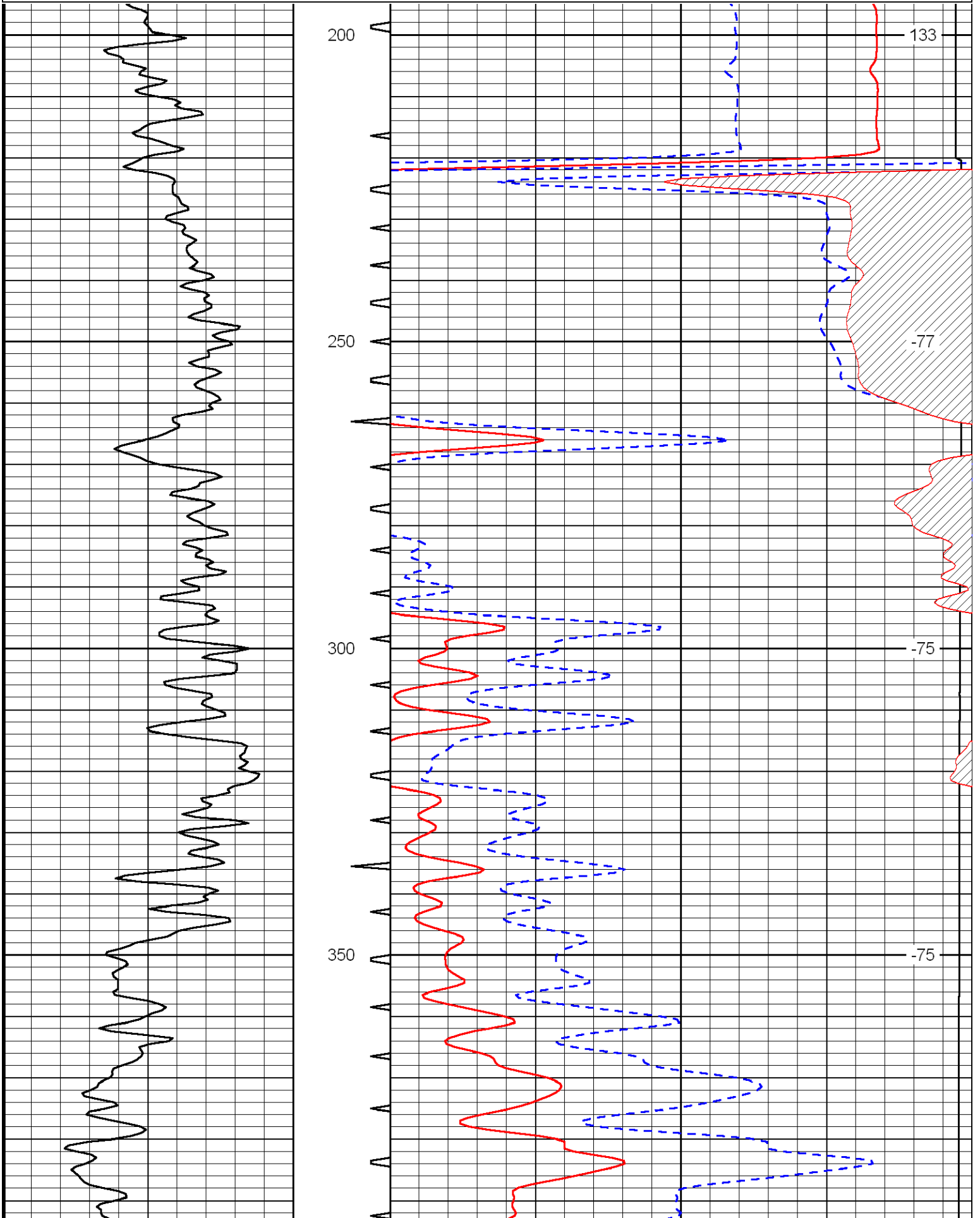
Thank you for using Log-Tech, Inc.
(785) 625-3858

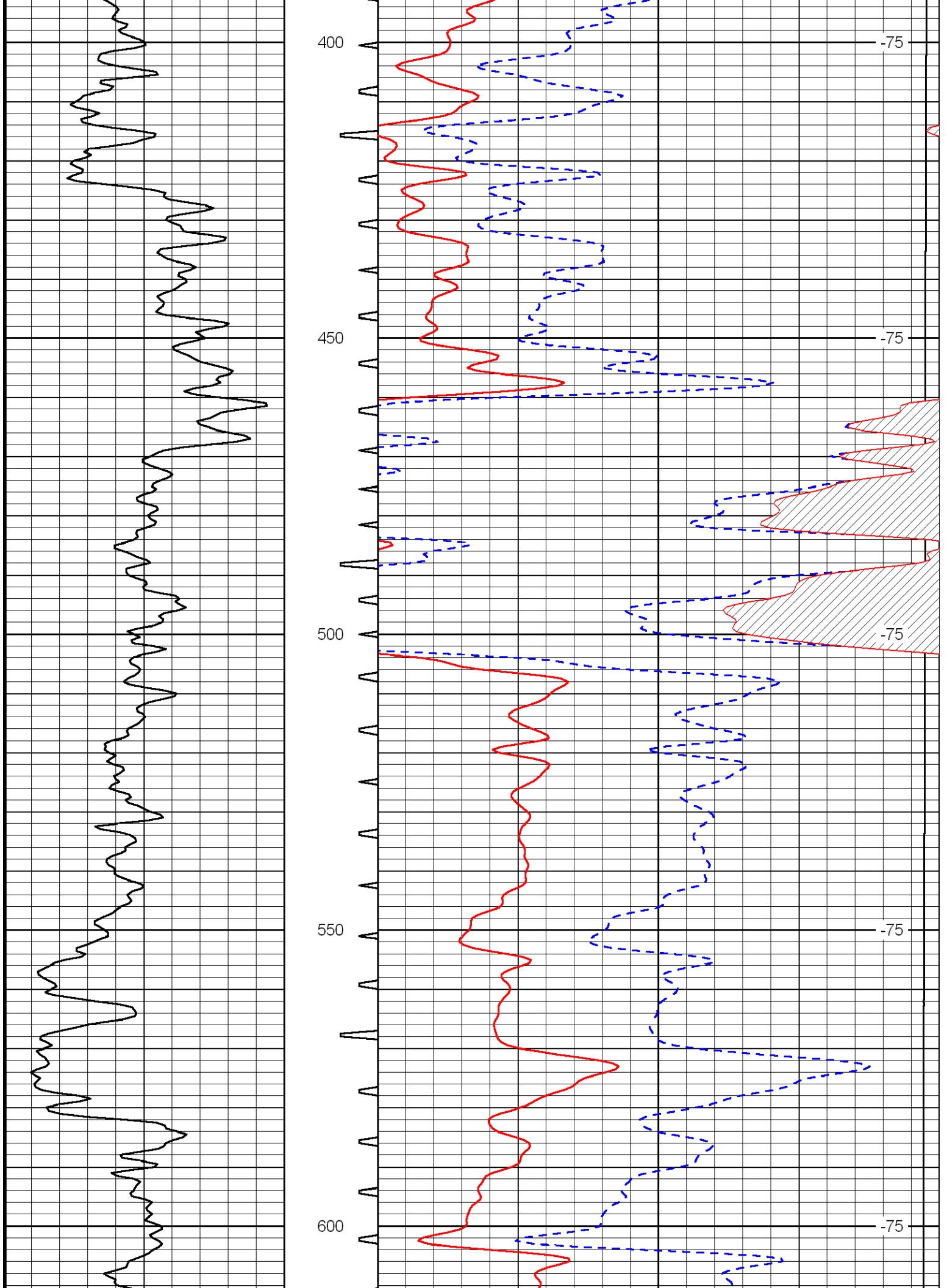
Hays KS,
Yocemento and Golf Course RD,
1/2 East, NorthEast Into

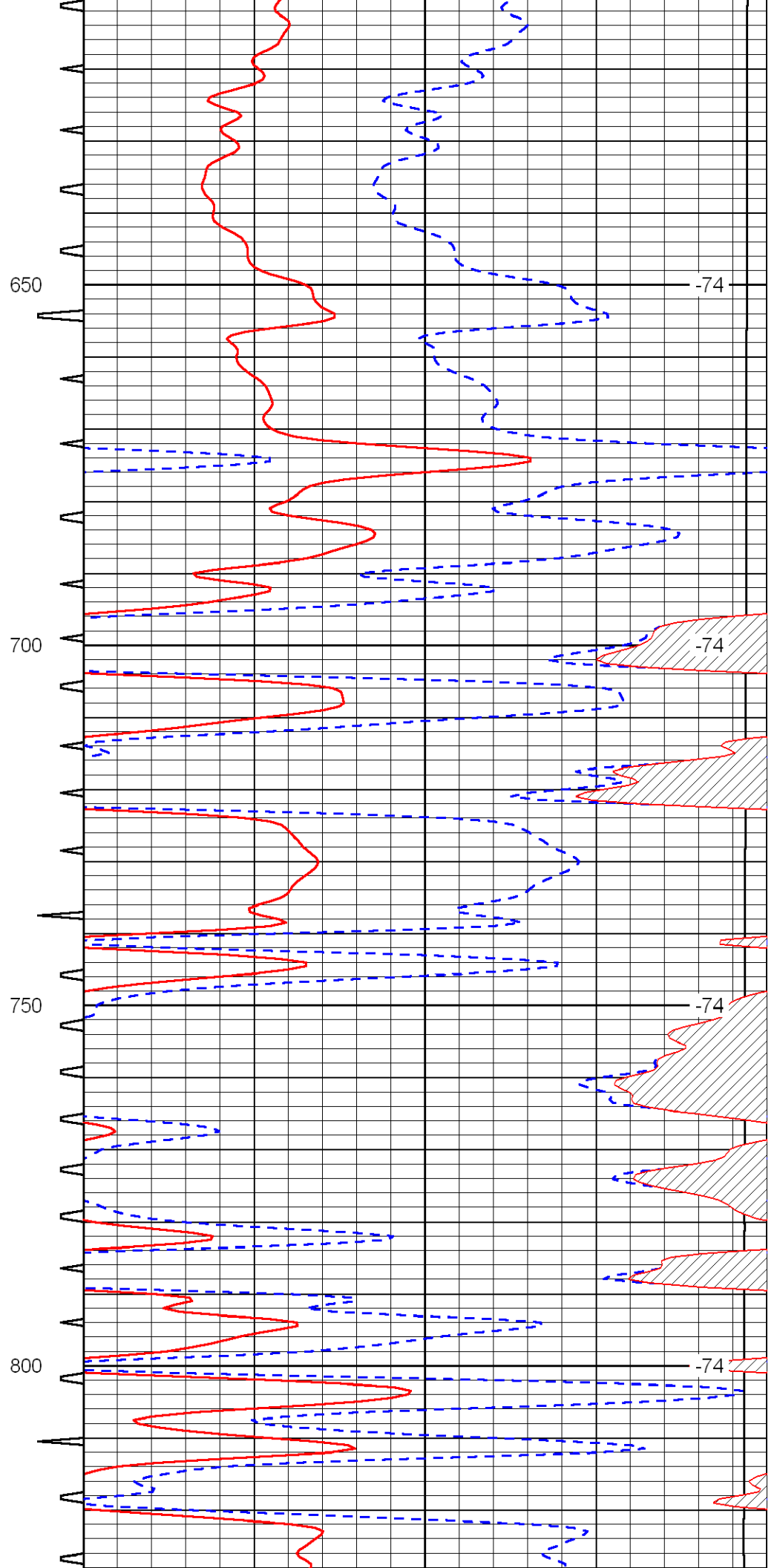
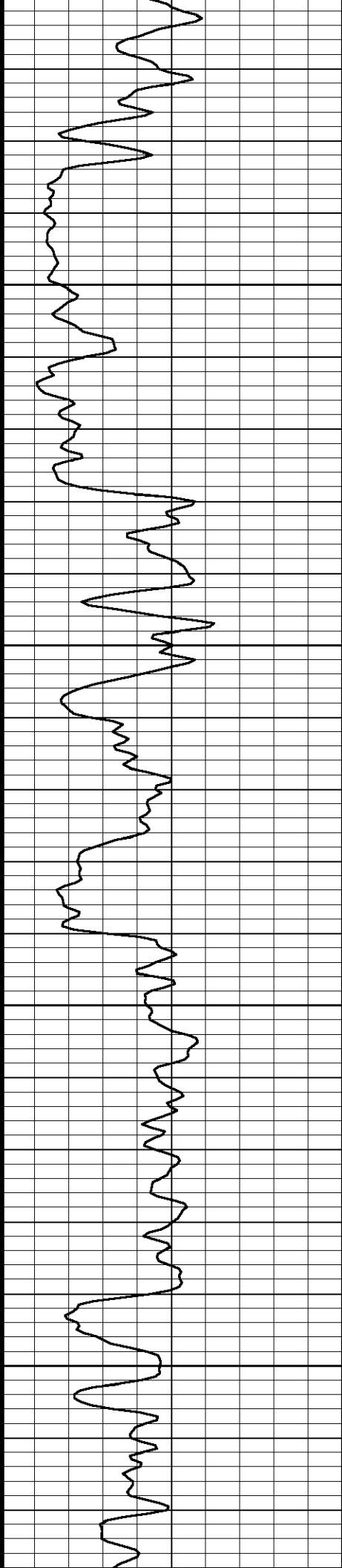
Database File: murfin_stadelman_102911hd.db
 Dataset Pathname: DIL/mfrnstk
 Presentation Format: sonic
 Dataset Creation: Sat Oct 29 10:36:49 2011
 Charted by: Depth in Feet scaled 1:240

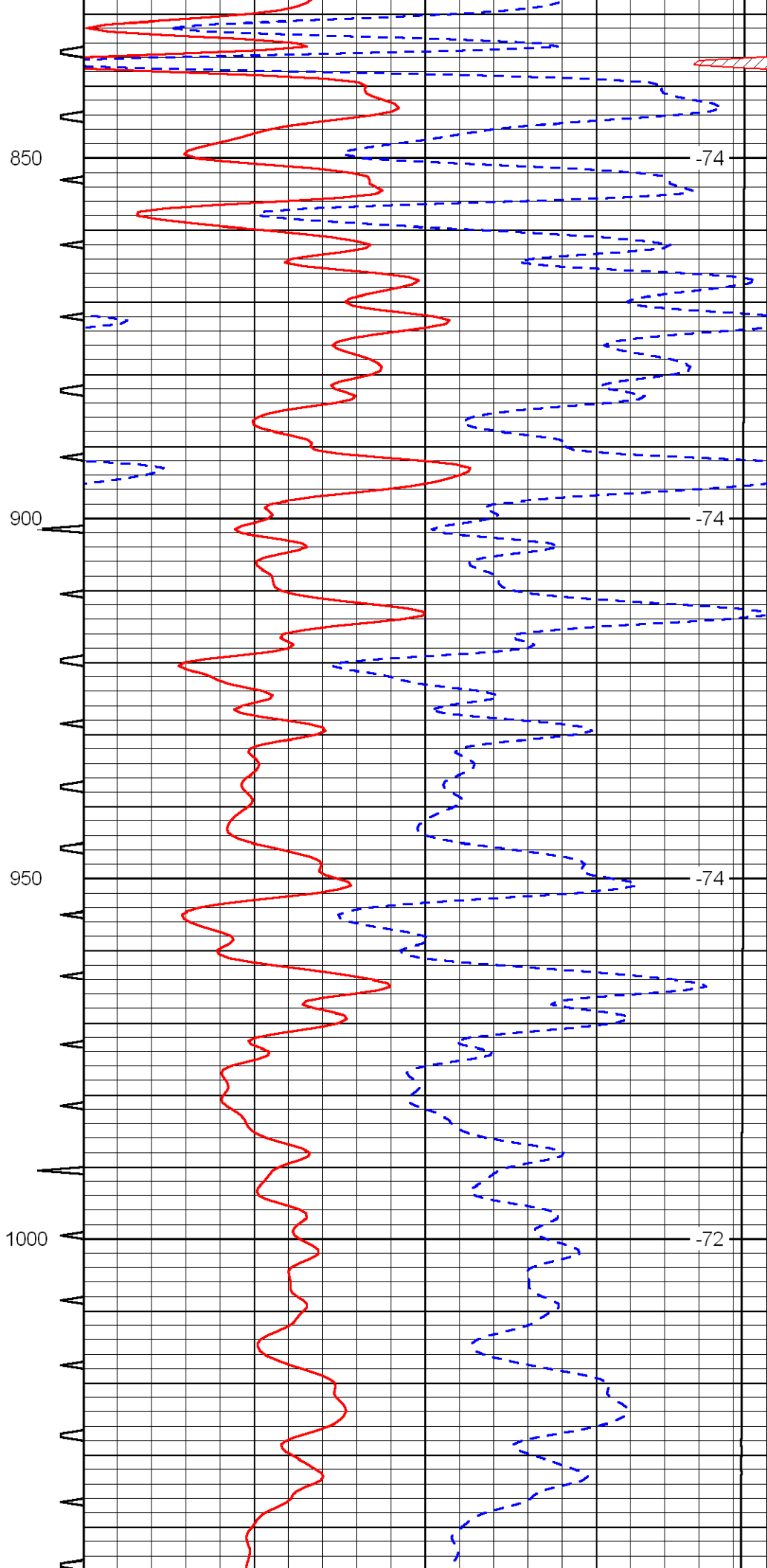
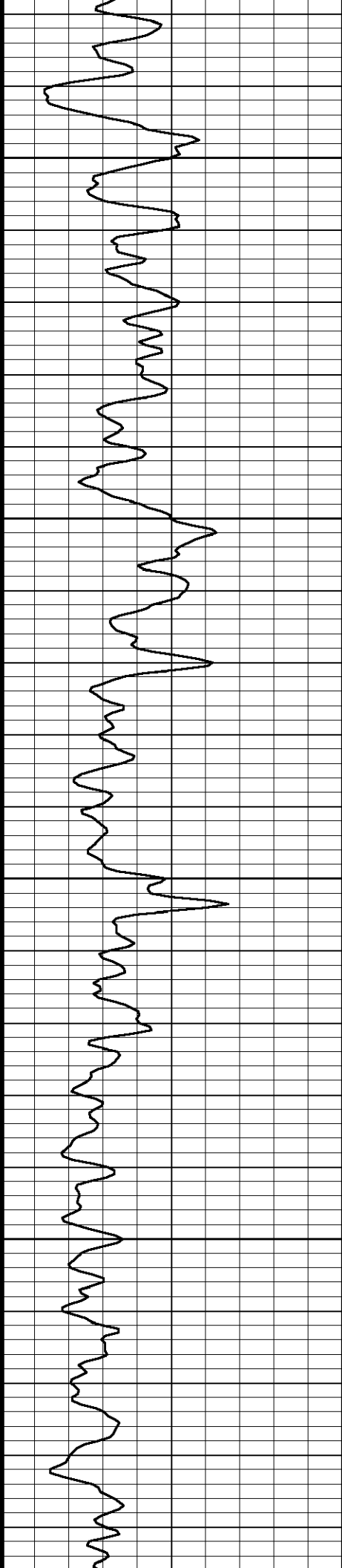
0	Gamma Ray	150	Sonic Int	140	Delta Time (usec/ft)	40
150	Gamma Ray	300	5	0	Sonic Porosity	-10
6	dCAL (GAPI)	16		15000	LTEN (lb)	0

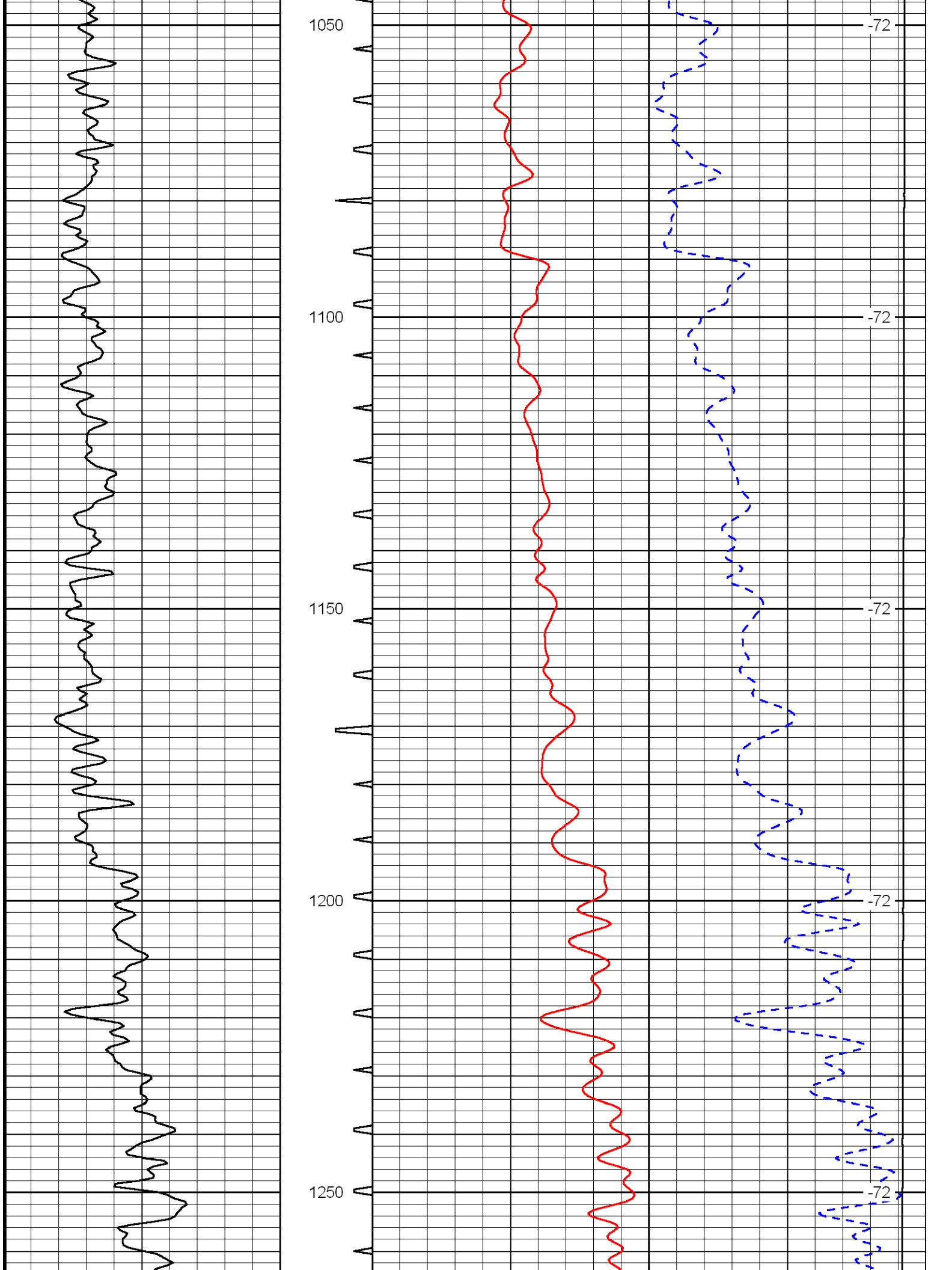
LSPD

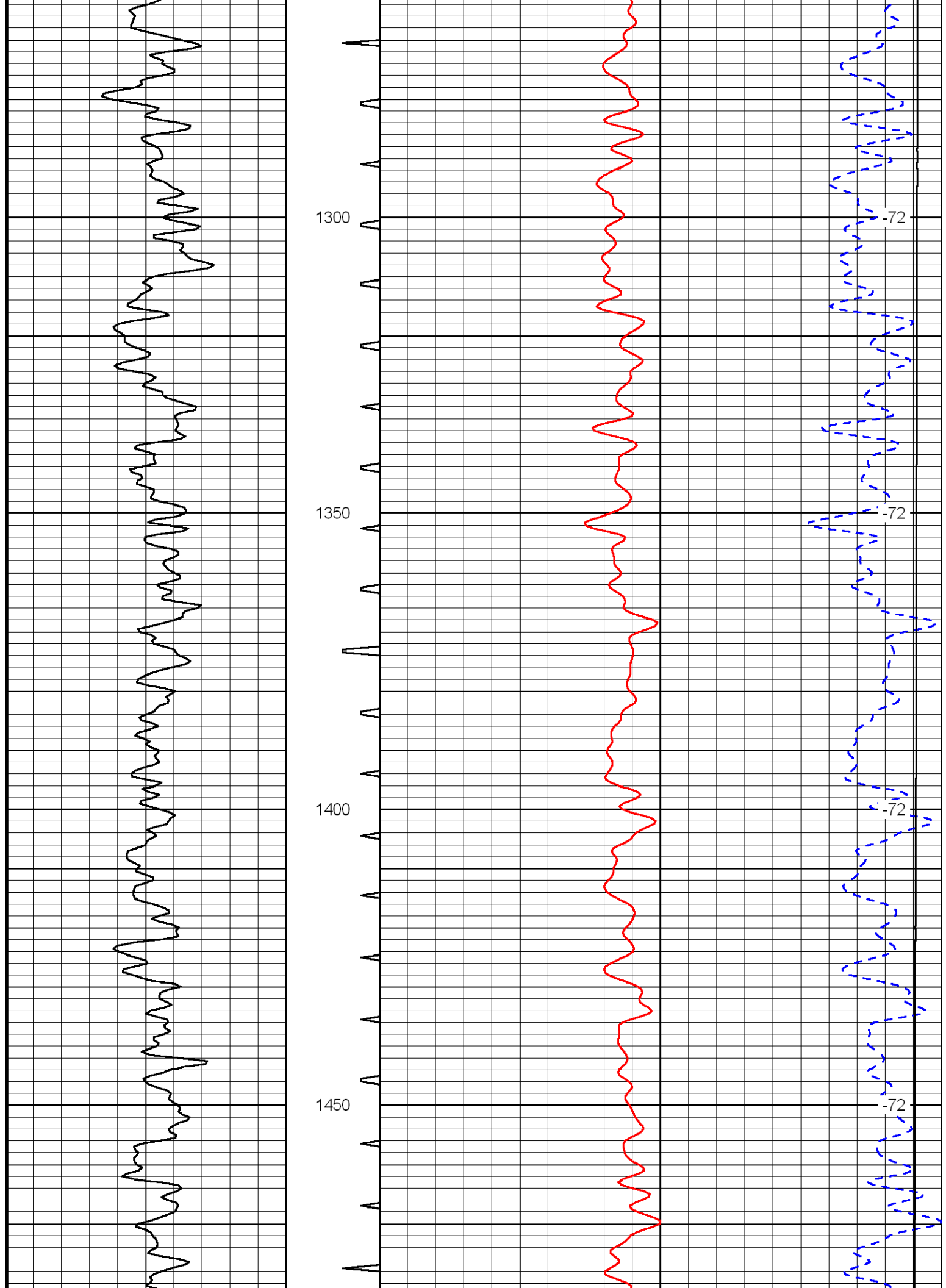


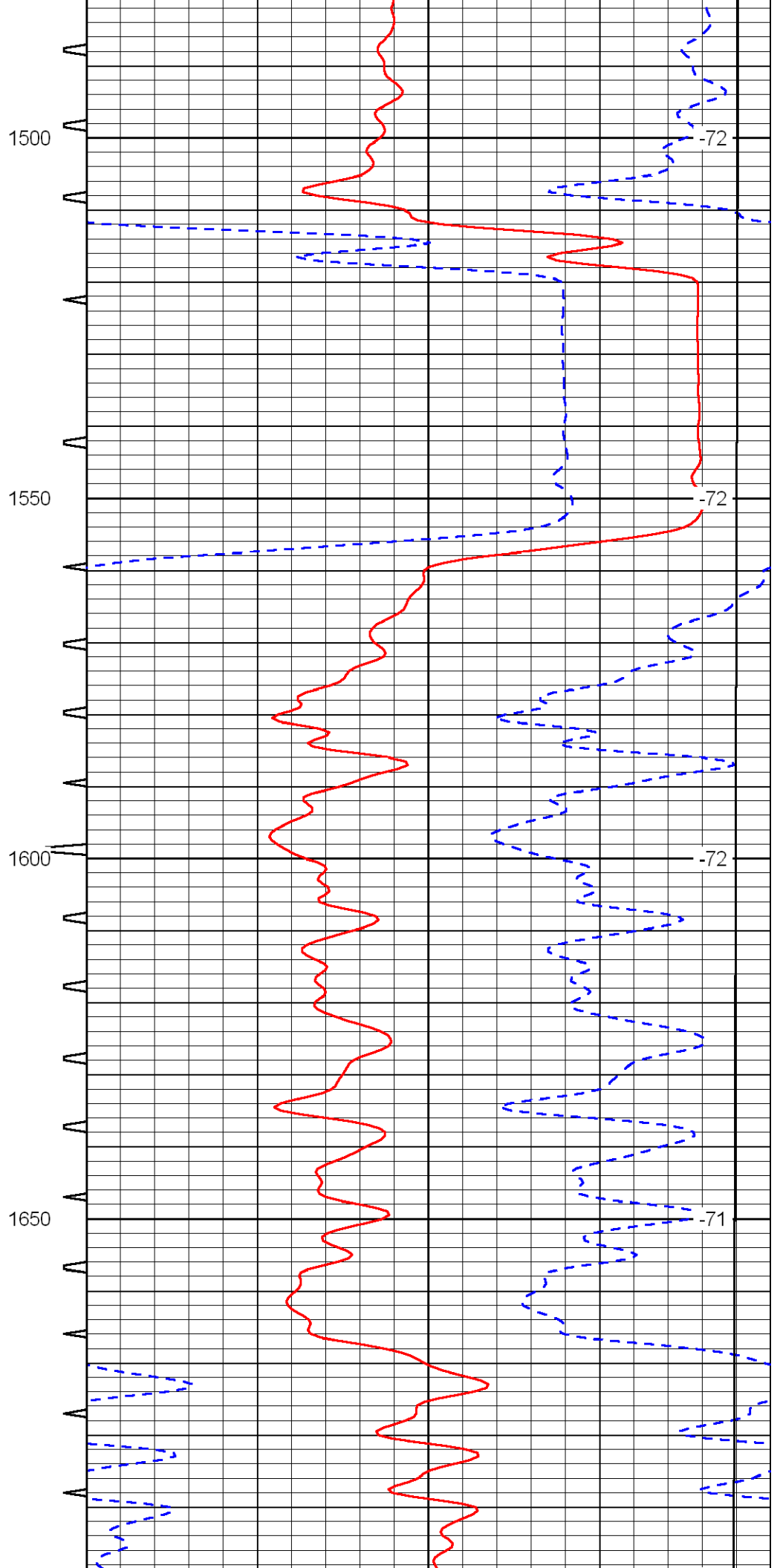
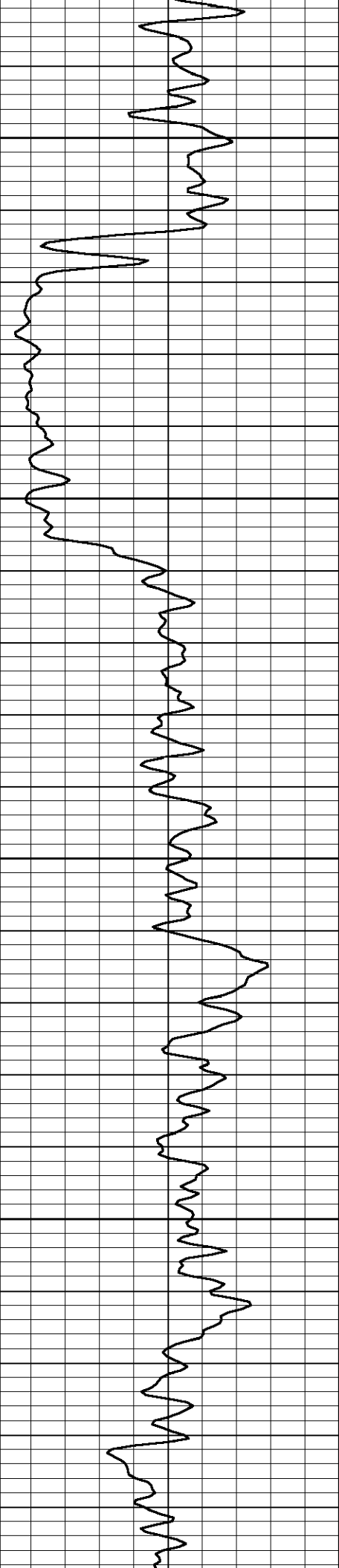


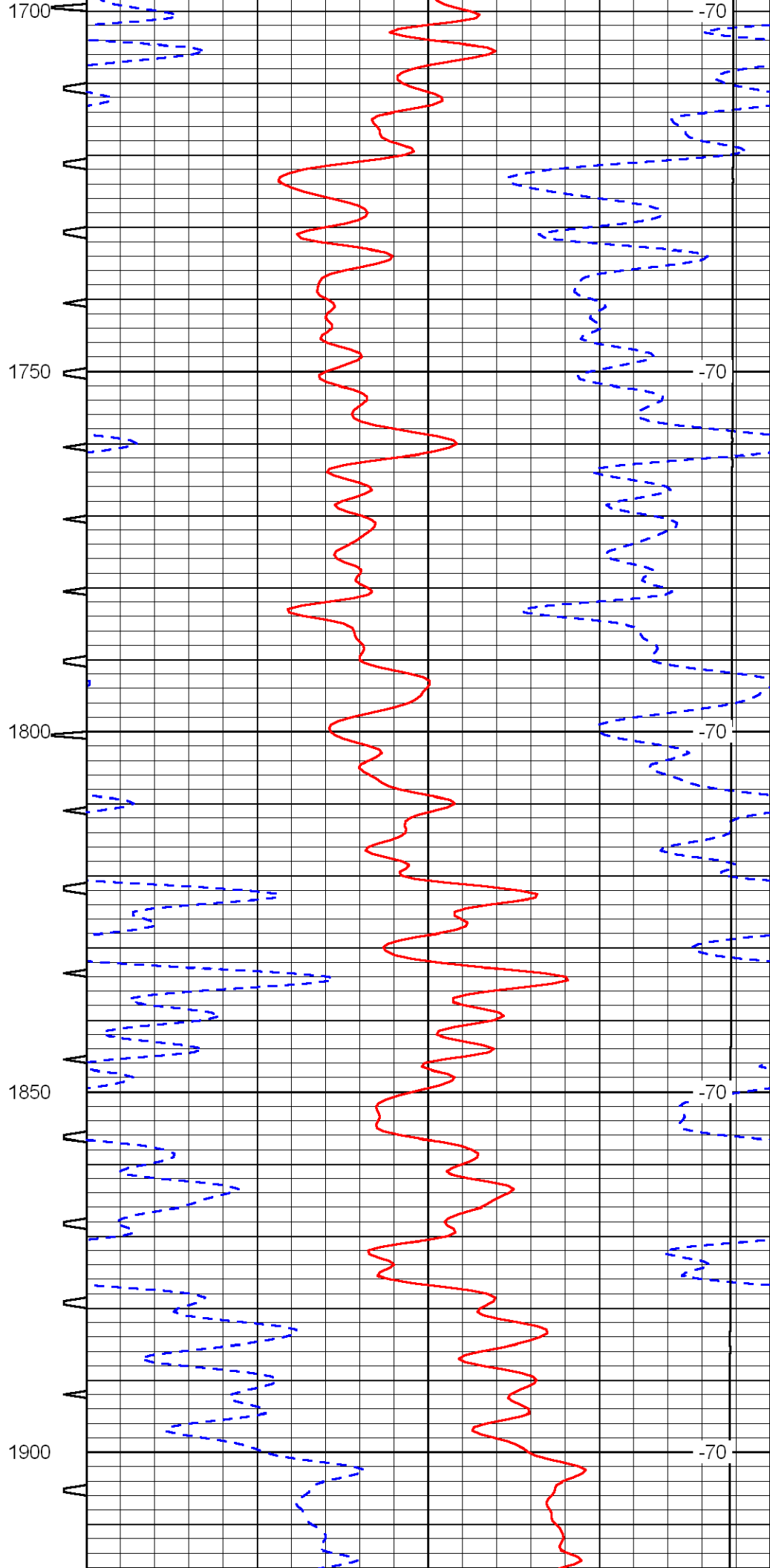
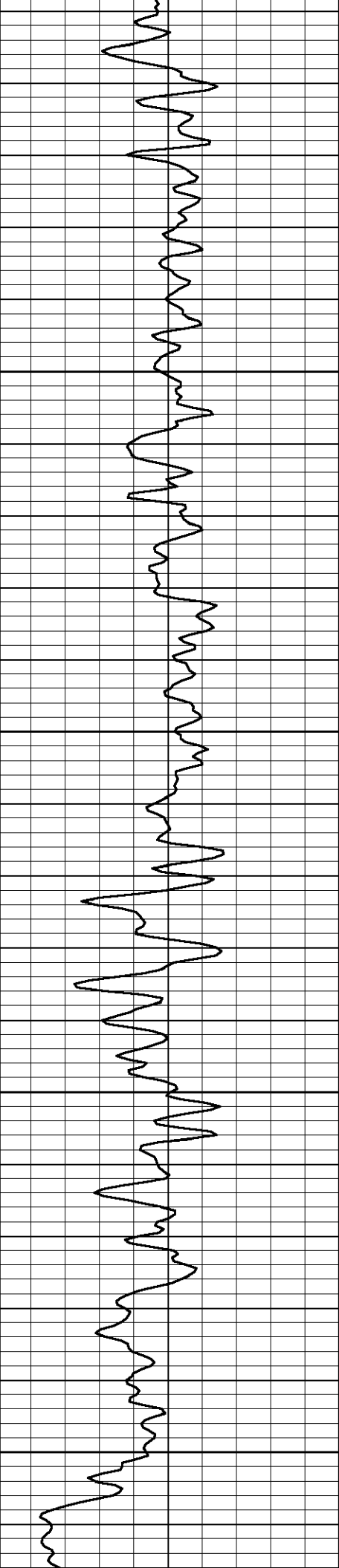


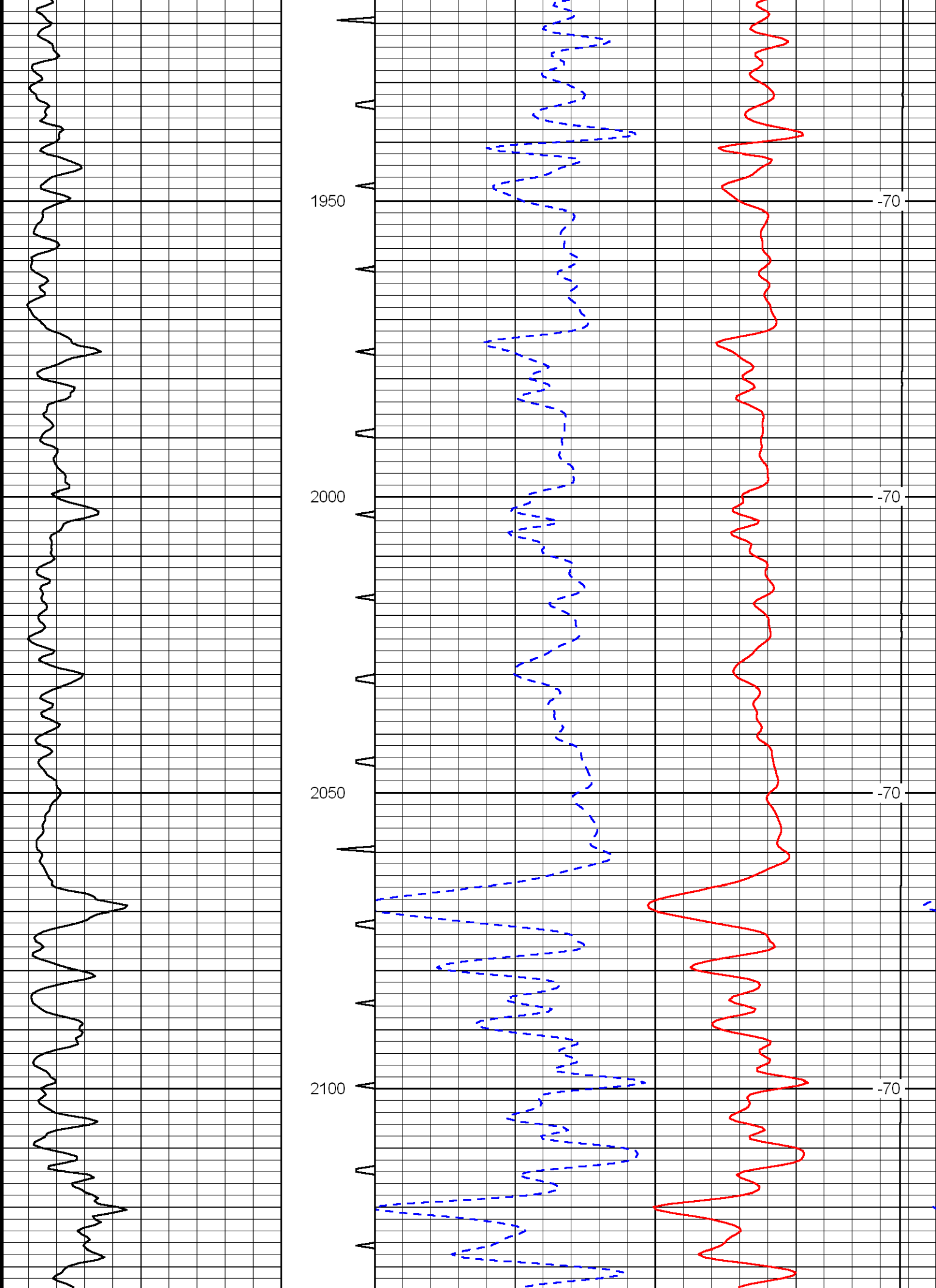


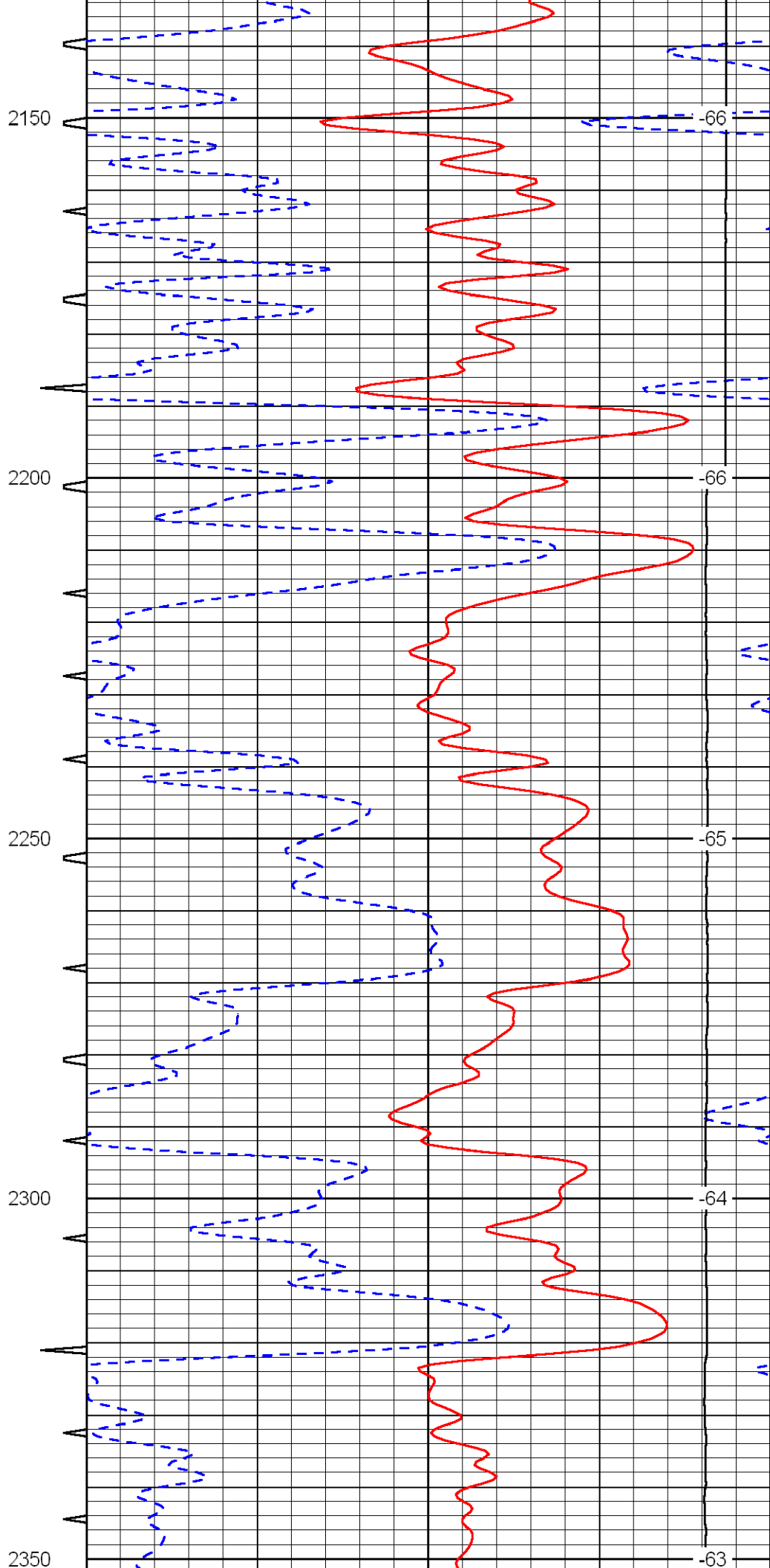
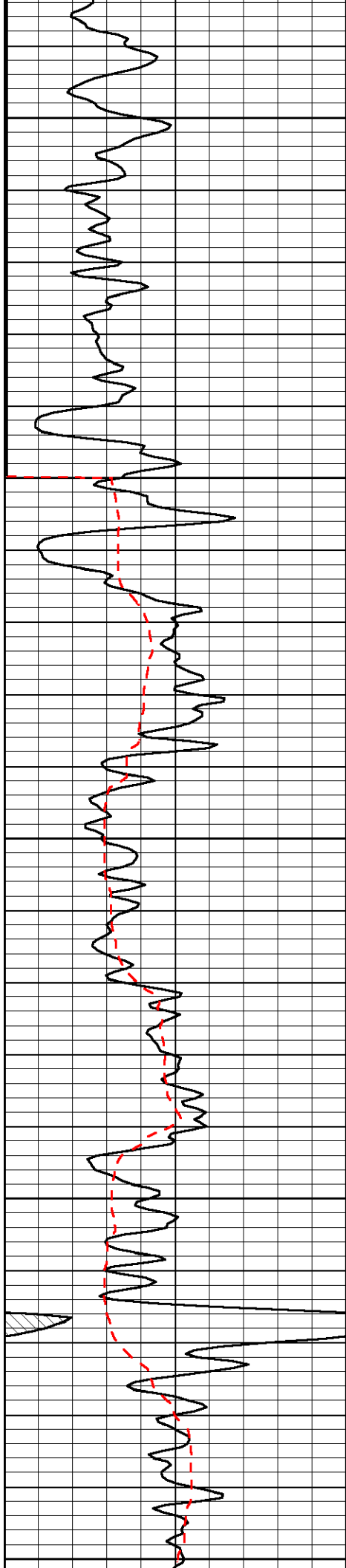


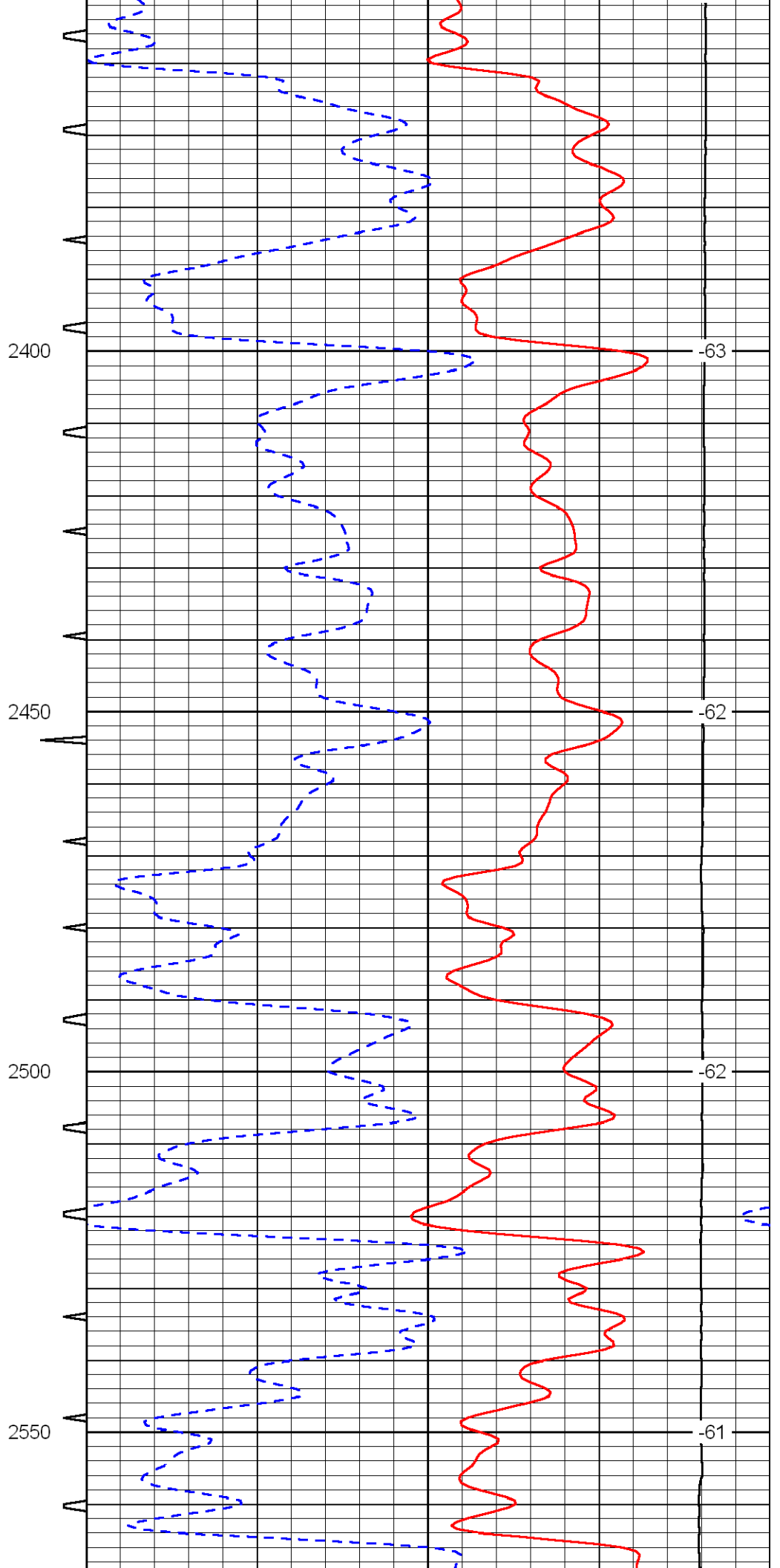
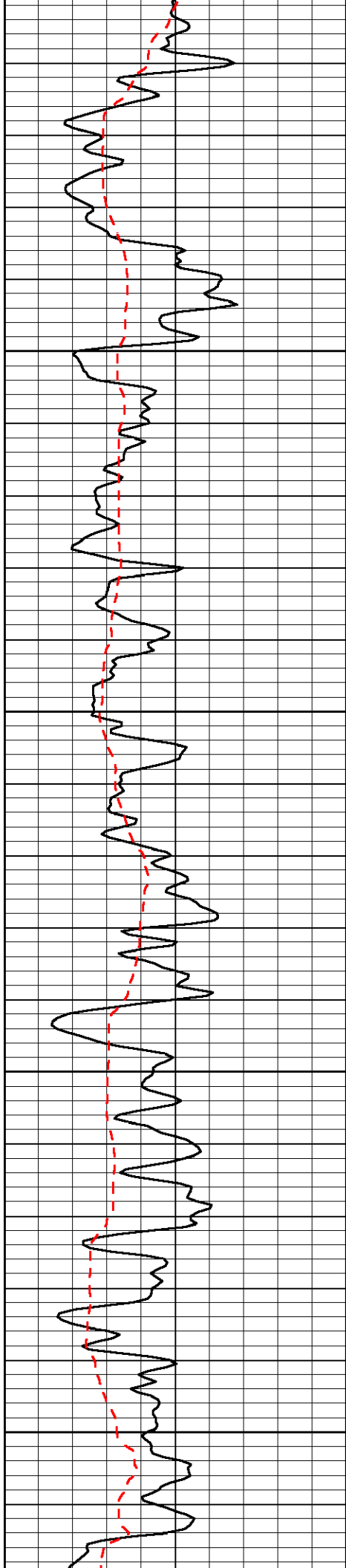


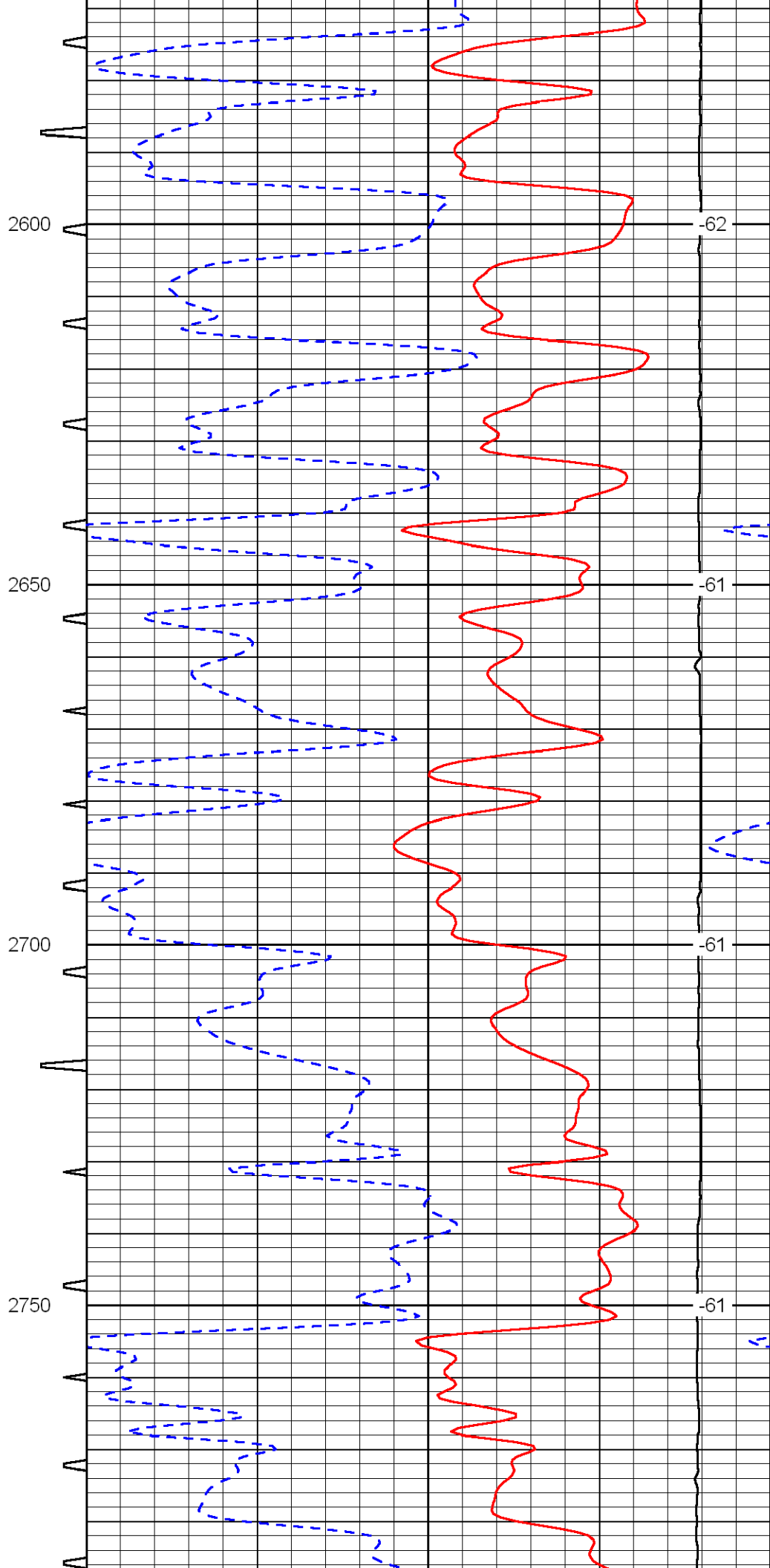
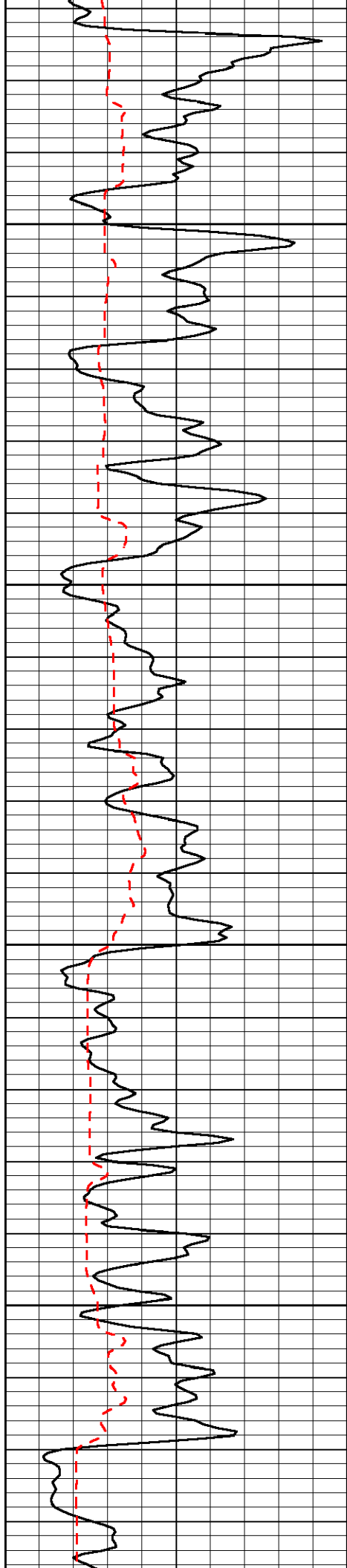


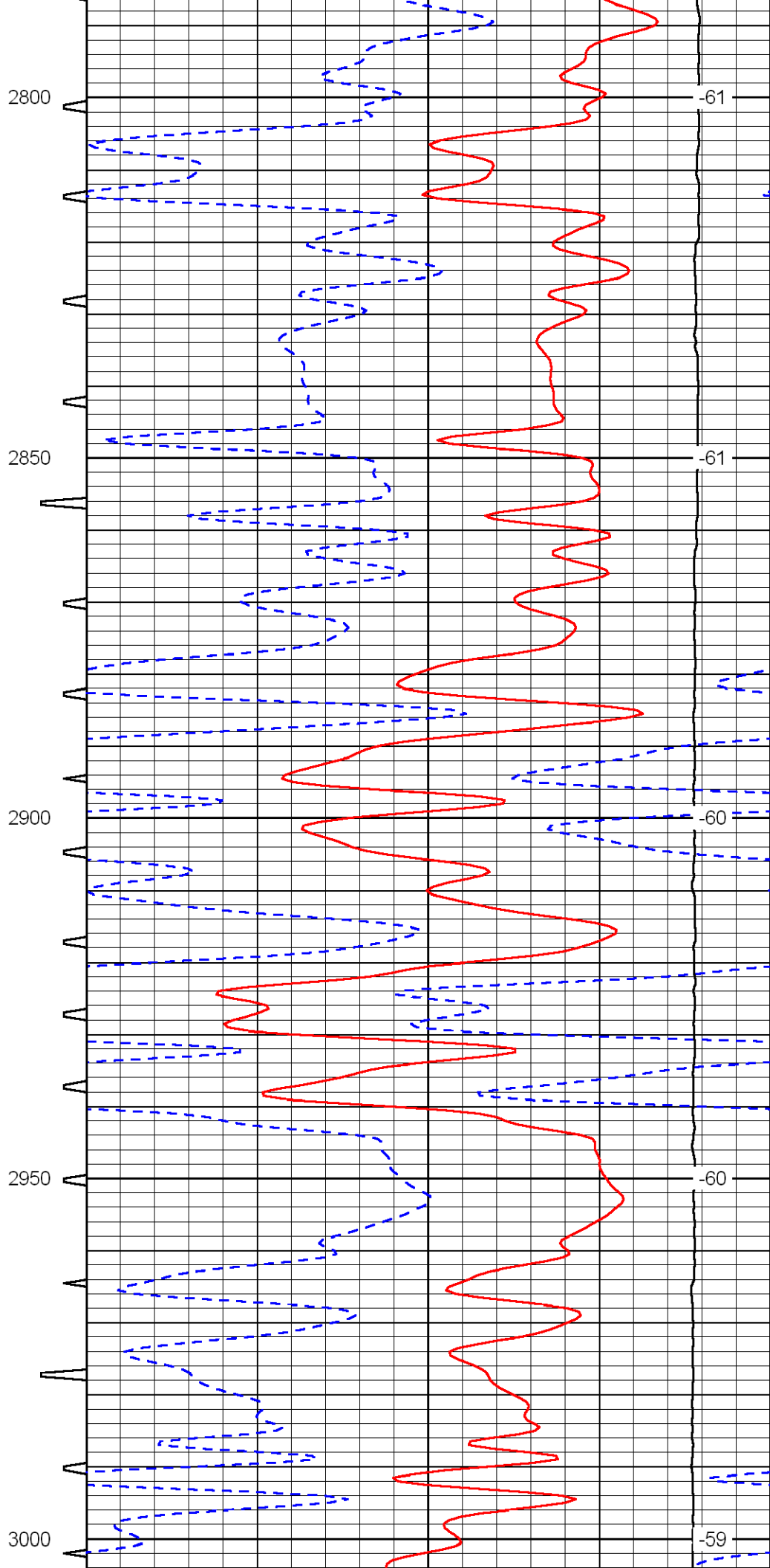
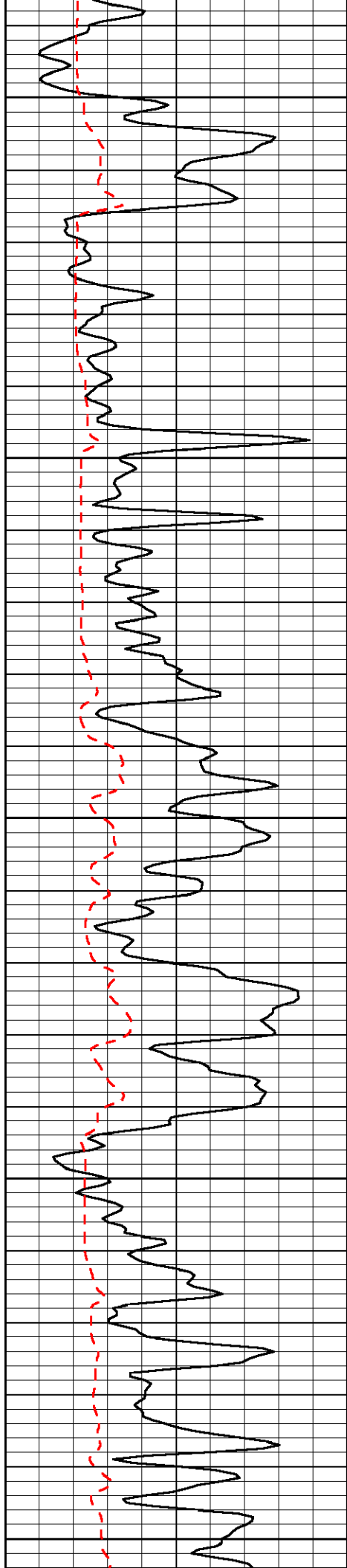


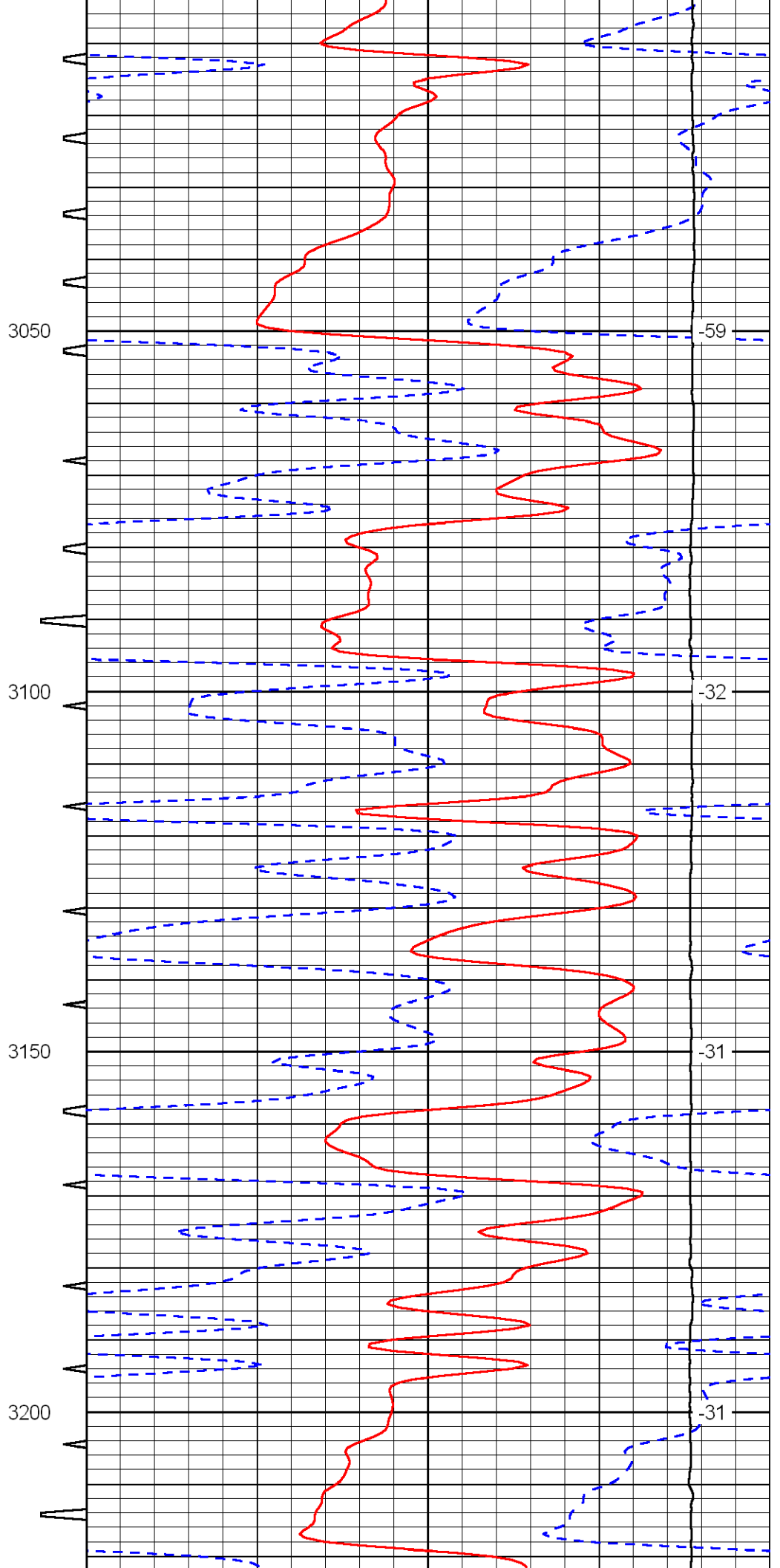
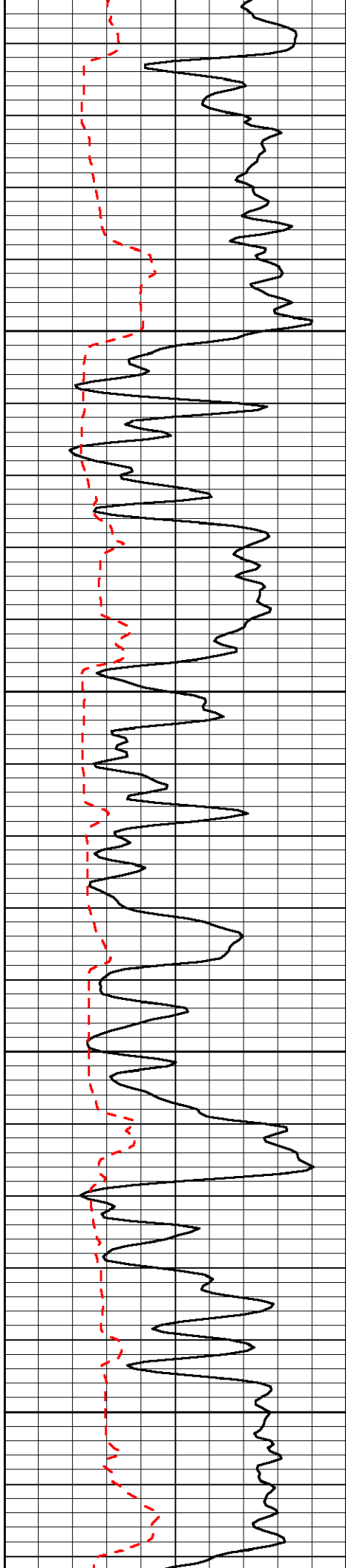


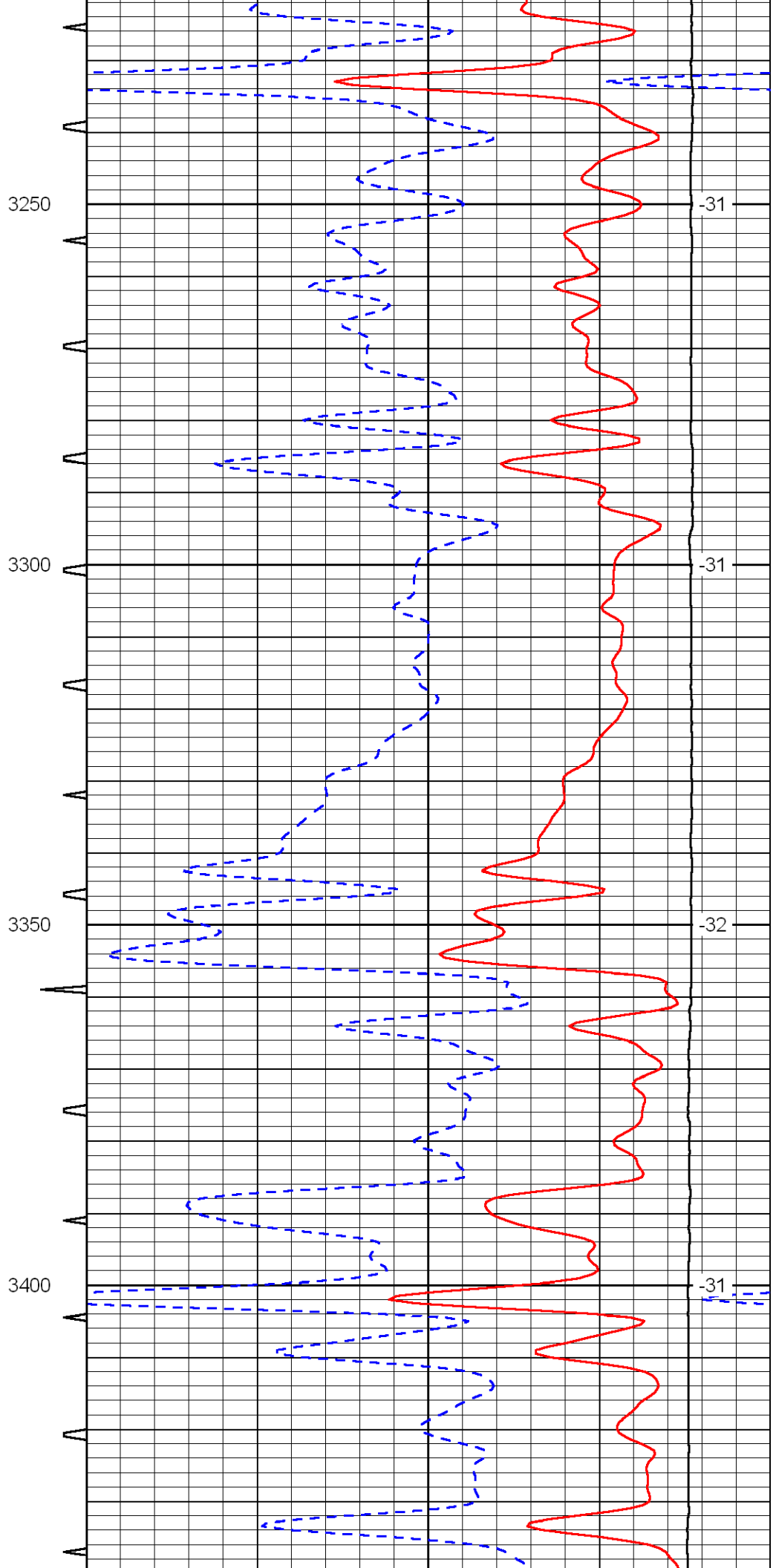
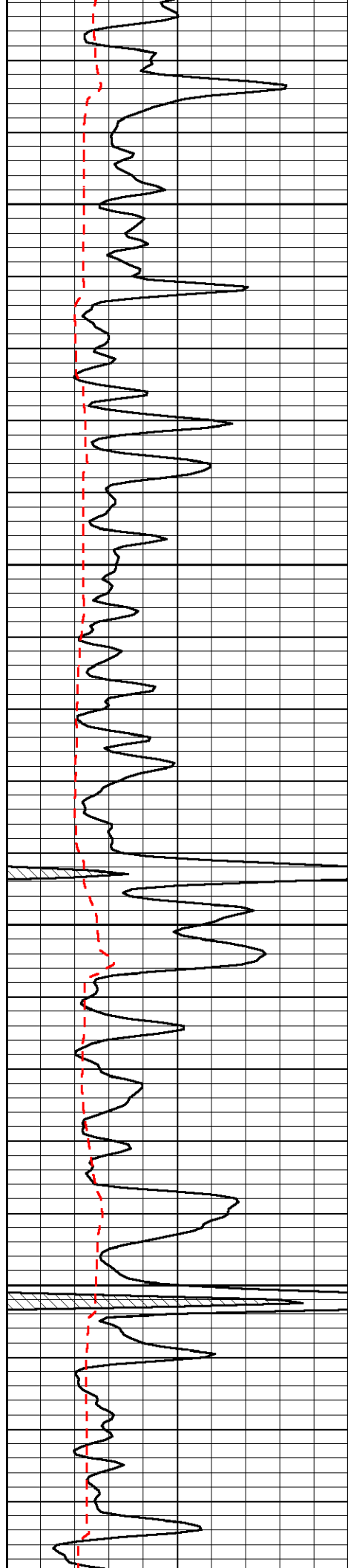


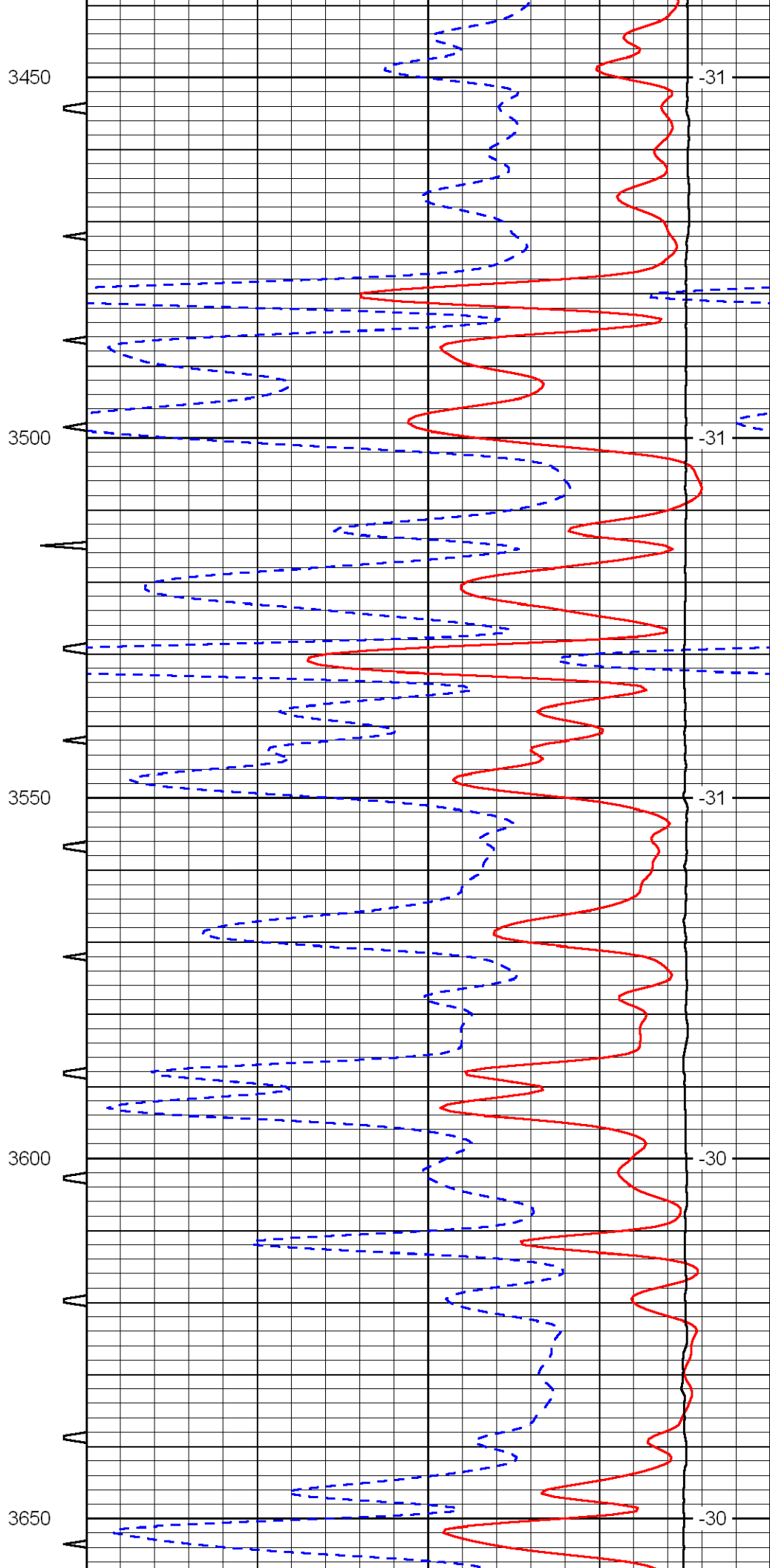
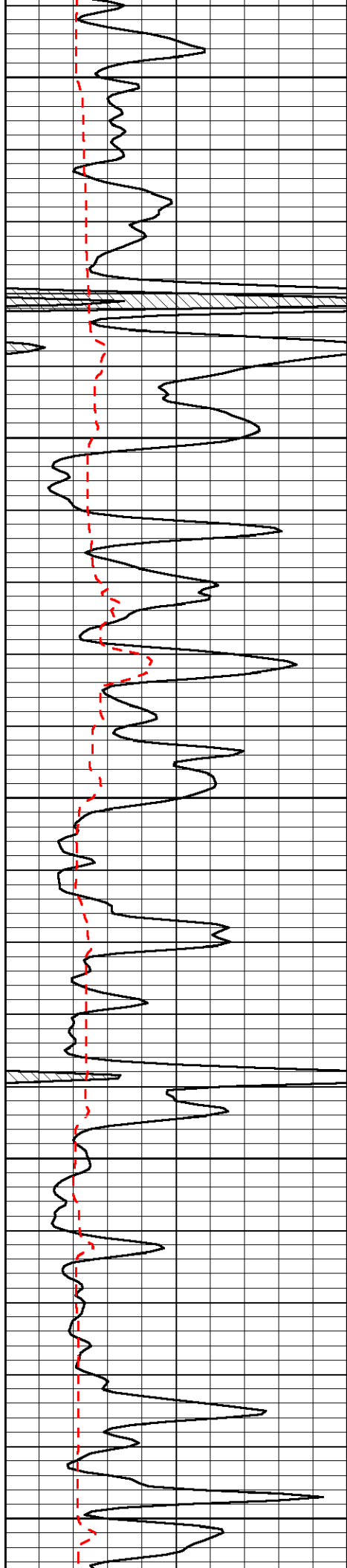


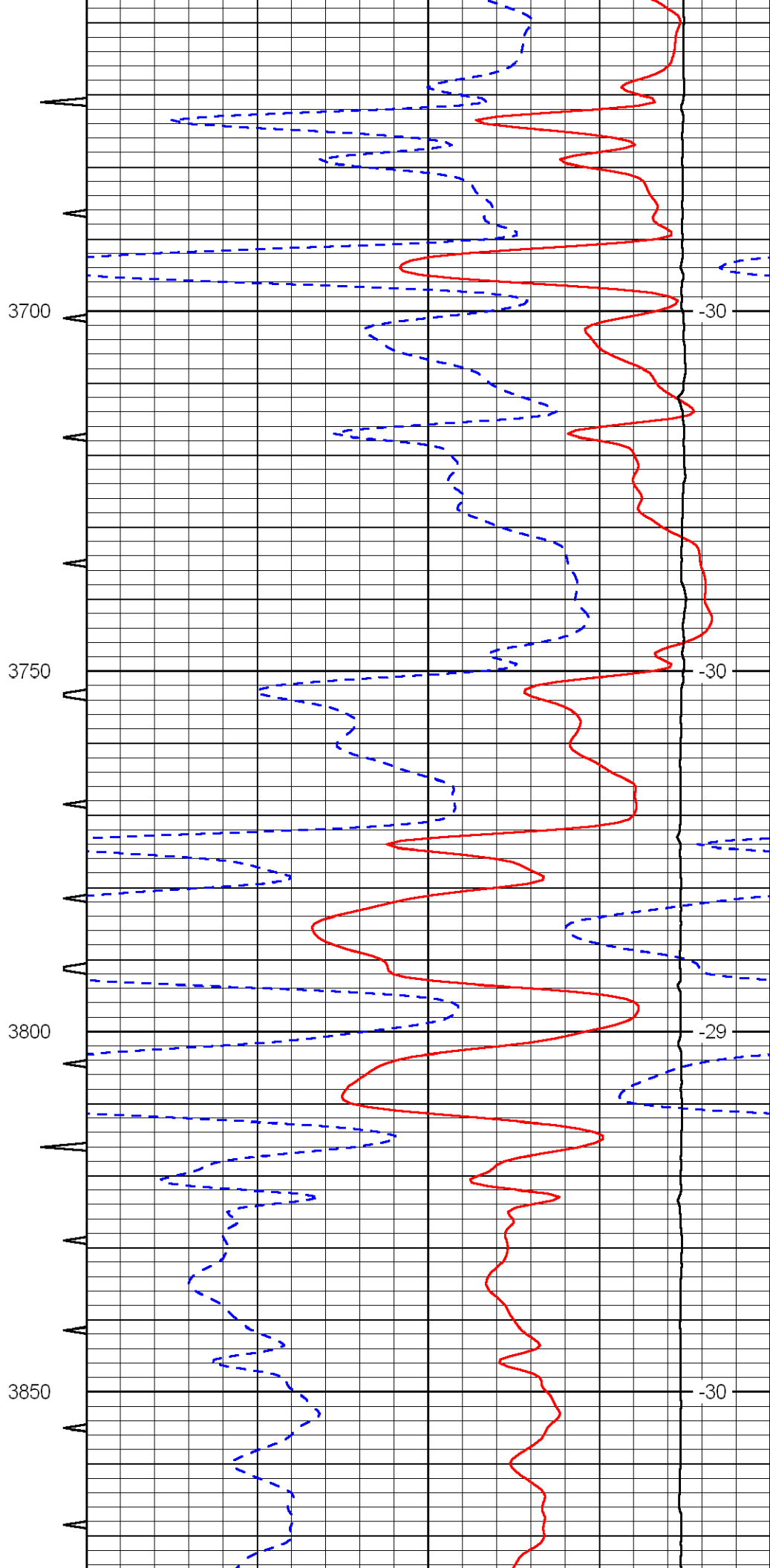
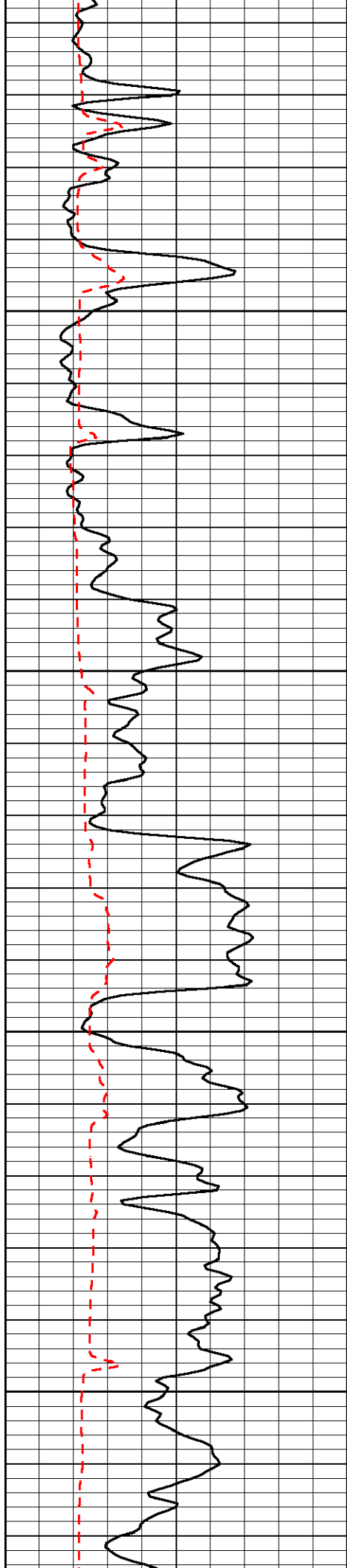


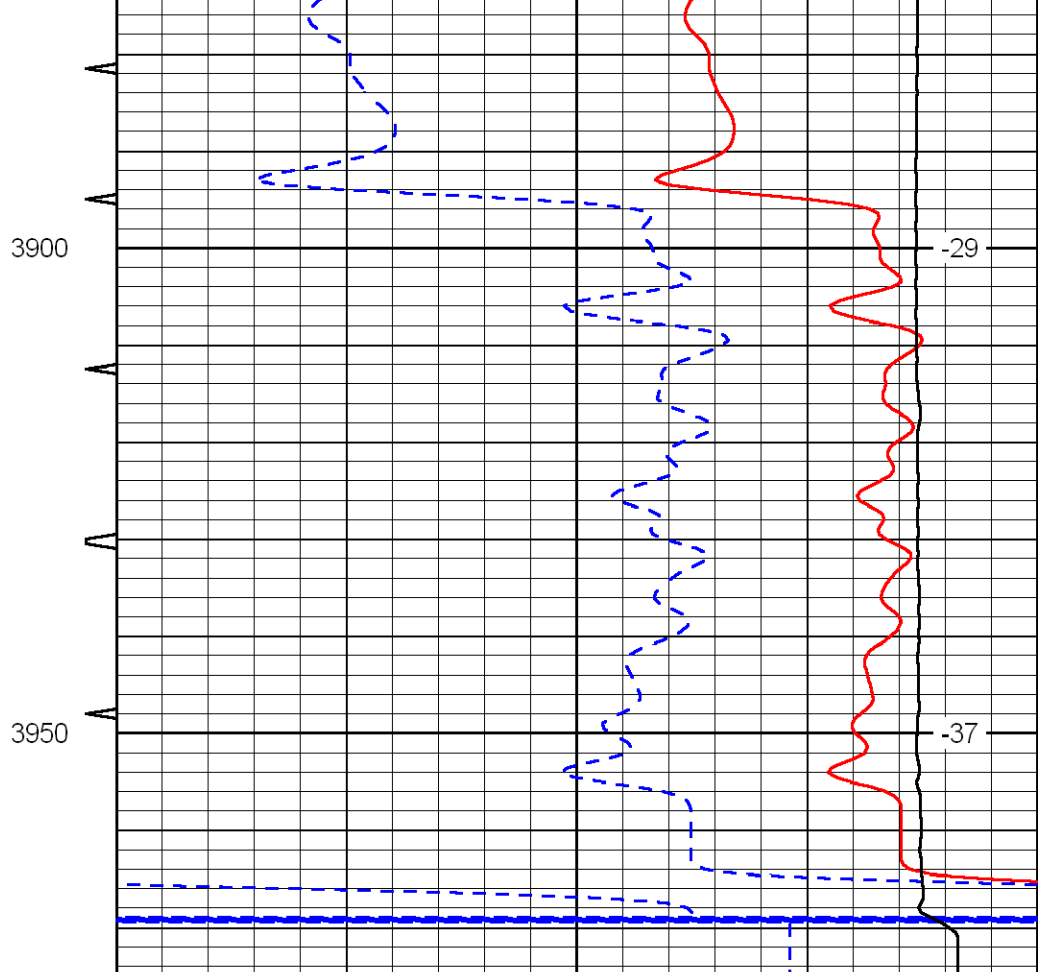
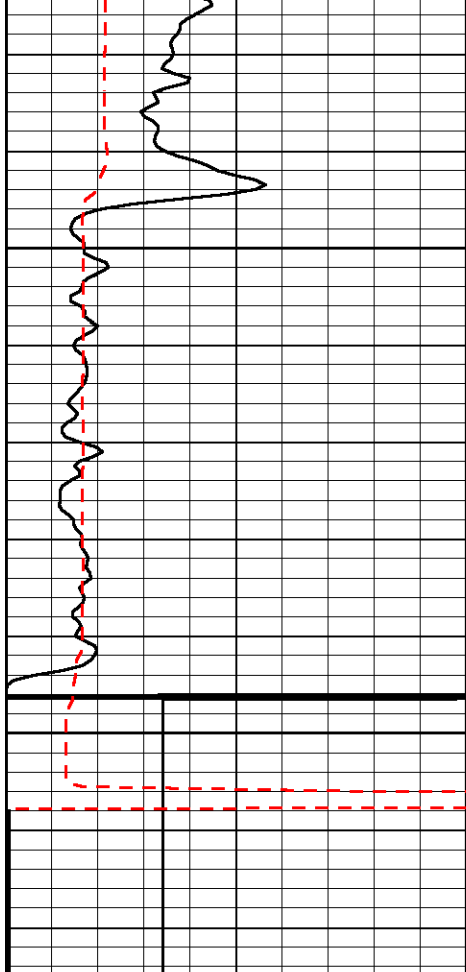












0	Gamma Ray	150	Sonic Int	140	Delta Time (usec/ft)	40
150	Gamma Ray	300	5	0	Sonic Porosity	-10
6	dCAL (GAPI)	16		15000	LTEN (lb)	0
LSPD						