



Dual Compensated
Porosity Log

DIGITAL LOG (785) 625-3858

API No. 15-051-26,209-00-00

Company Murfin Drilling Company, Inc.
Well Stadelman Unit No. 1-3
Field Stadelman
County Ellis
State Kansas

Location 1100' FSL & 370' FWL
Sec: 3 Twp: 14 S Rge: 19 W

Other Services
DIL
MEL/BHCS

Elevation 2215
K.B. 2220
D.F. G.L. 2215

Permanent Datum Ground Level Elevation 2215
Log Measured From Kelly Bushing 5 Ft. Above Perm. Datum
Drilling Measured From Kelly Bushing

Date 10/29/2011

Run Number One
Type Log CNL / CDL
Depth Driller 3965
Depth Logger 3968
Bottom Logged Interval 3947
Top Logged Interval 3100
Type Fluid In Hole Chemical
Salinity, PPM CL 5300
Density 9.2
Level Full
Max. Rec. Temp. F 118
Operating Rig Time 5 Hours
Equipment -- Location 91 Hays
Recorded By D.Kerr
Witnessed By Paul Gunzelman

Borehole Record				Casing Record			
Run No	Bit	From	To	Size	Wgt.	From	To
One	12.25	00	220	8.625	23#	00	220
Two	7.875	220	TD				

<<< Fold Here >>>

All interpretations are opinions based on inferences from electrical or other measurements and we cannot and do not guarantee the accuracy or correctness of any interpretation, and we shall not, except in the case of gross or willful negligence on our part, be liable or responsible for any loss, costs, damages, or expenses incurred or sustained by anyone resulting from any interpretation made by any of our officers, agents or employees. These interpretations are also subject to our general terms and conditions set out in our current Price Schedule.

Comments

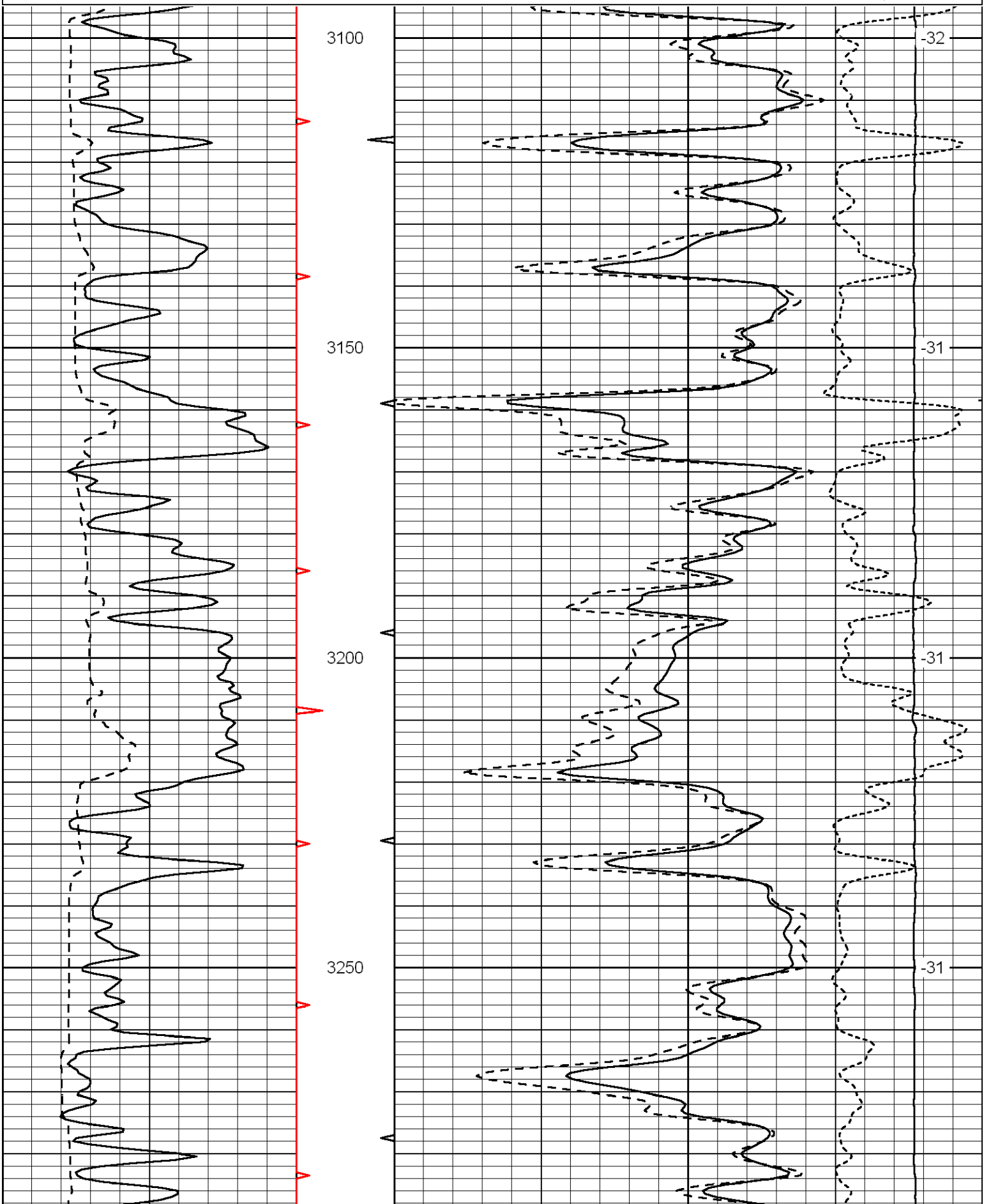
Thank you for using Log-Tech, Inc.
(785) 625-3858

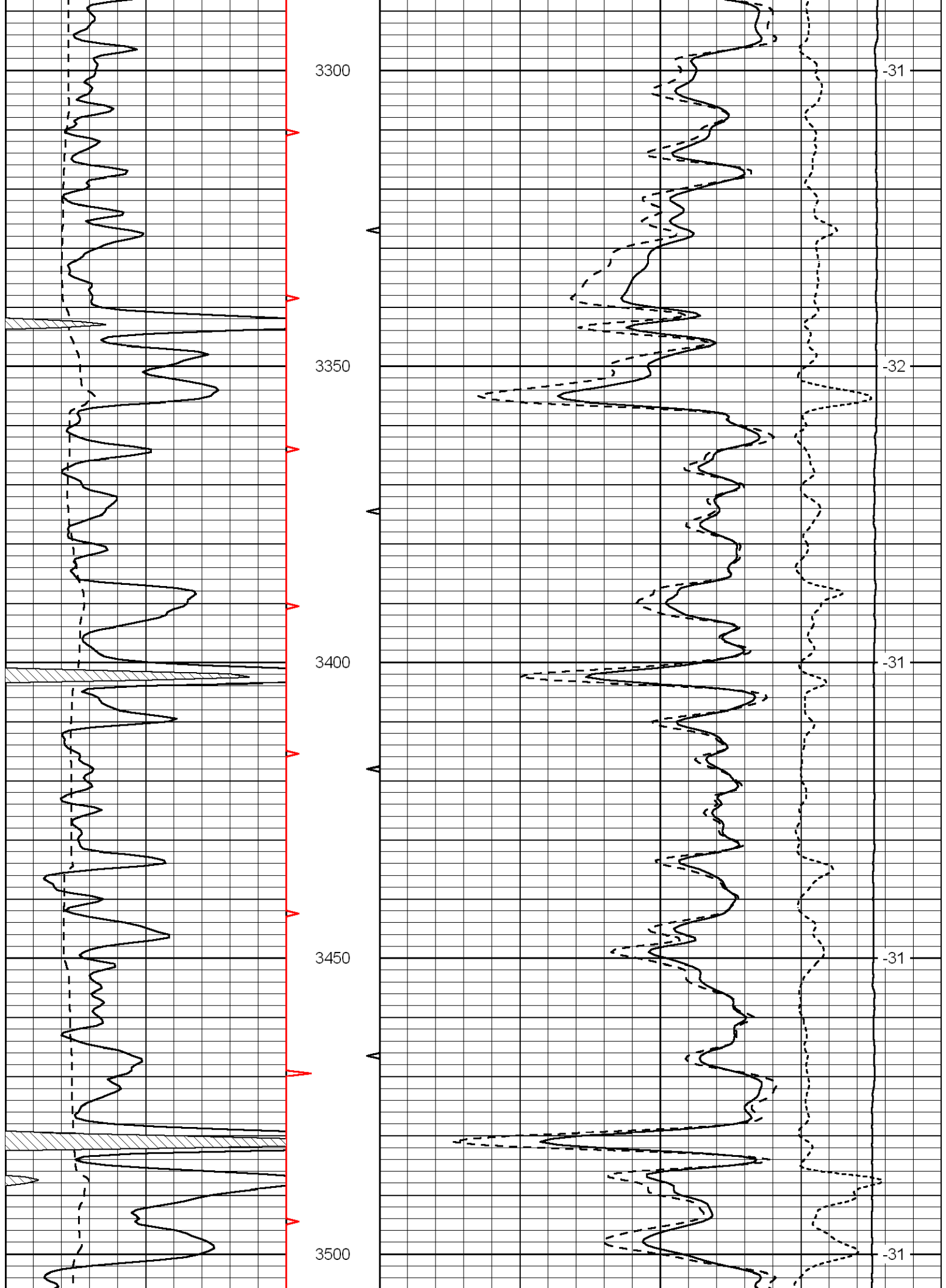
Hays KS,
Yocemento and Golf Course RD,
1/2 East, NorthEast Into

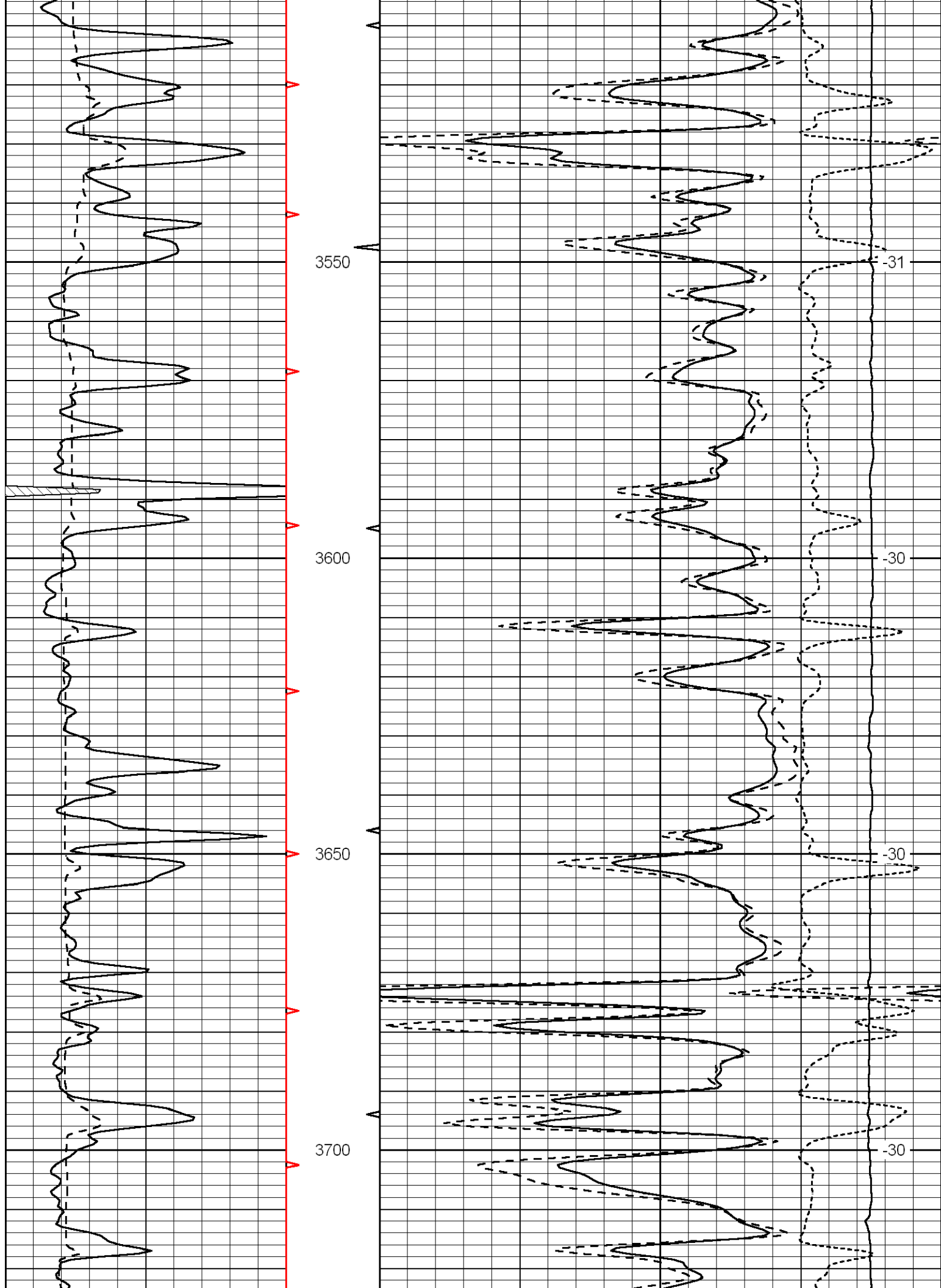
Database File: murfin_stadelman_102911hd.db
Dataset Pathname: DIL/mfrnstk
Presentation Format: cdl
Dataset Creation: Sat Oct 29 10:36:49 2011
Charted by: Depth in Feet scaled 1:240

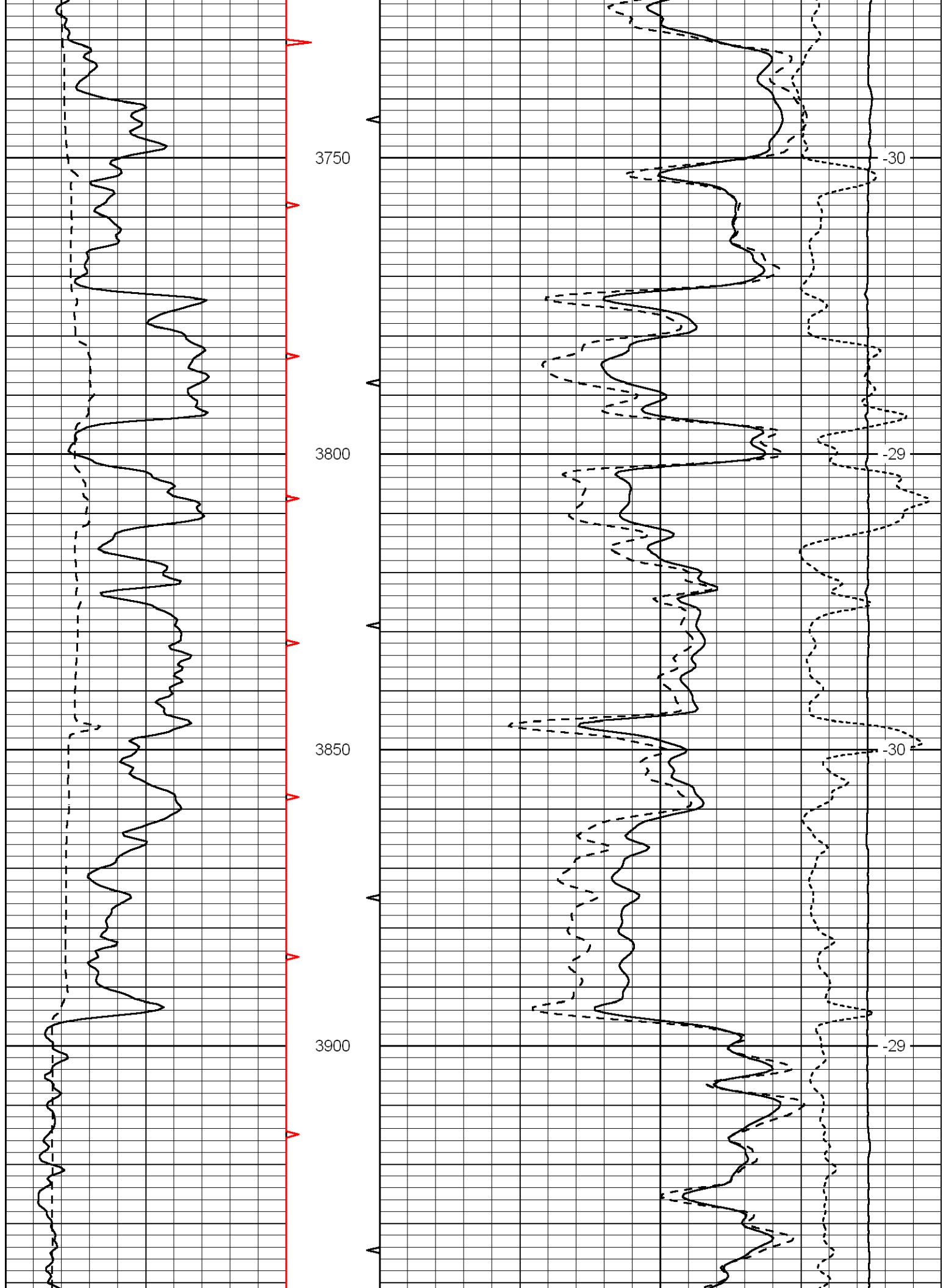
0	Gamma Ray	150
6	Caliper (GAPI)	16

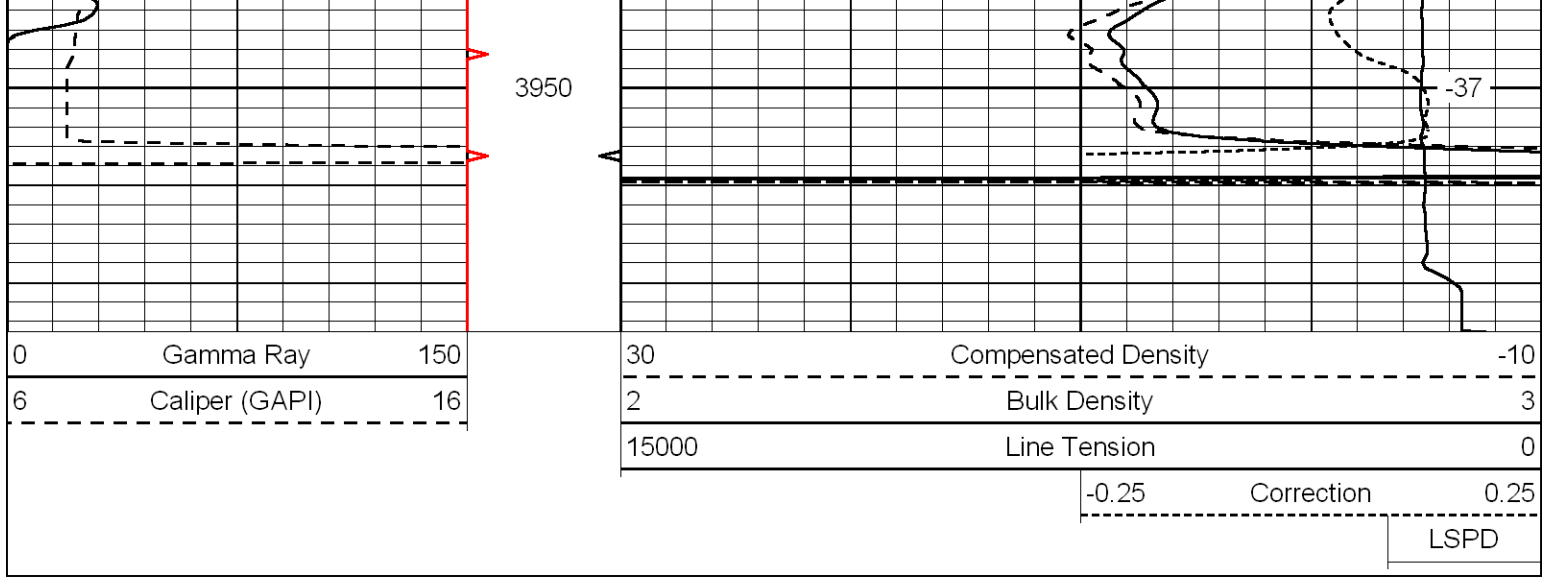
30	Compensated Density	-10	
2	Bulk Density	3	
15000	Line Tension	0	
	-0.25	Correction	0.25
			LSPD











Database File: murfin_stadelman_102911hd.db
 Dataset Pathname: DIL/mfrnstk
 Presentation Format: cndlspec
 Dataset Creation: Sat Oct 29 10:36:49 2011
 Charted by: Depth in Feet scaled 1:240

